

# Memoirs of the Queensland Museum | **Nature** **60**

© The State of Queensland, Queensland Museum 2017

PO Box 3300, South Brisbane 4101, Australia  
Phone 06 7 3840 7555  
Fax 06 7 3846 1226  
Email [qmlib@qm.qld.gov.au](mailto:qmlib@qm.qld.gov.au)  
Website [www.qm.qld.gov.au](http://www.qm.qld.gov.au)

National Library of Australia card number  
ISSN 0079-8835 Print  
ISSN 2204-1478 Online

## NOTE

Papers published in this volume and in all previous volumes of the *Memoirs of the Queensland Museum* may be reproduced for scientific research, individual study or other educational purposes. Properly acknowledged quotations may be made but queries regarding the republication of any papers should be addressed to the Editor in Chief. Copies of the journal can be purchased from the Queensland Museum Shop.

A Guide to Authors is displayed at the Queensland Museum web site [www.qm.qld.gov.au](http://www.qm.qld.gov.au)

**A Queensland Government Project**  
Typeset at the Queensland Museum

# A new genus to accommodate three skinks currently assigned to *Proablepharus* (Lacertilia: Scincidae)

Patrick J. COUPER<sup>1</sup>

Conrad J. HOSKIN<sup>2</sup>

Sally POTTER<sup>3</sup>,

Jason G. BRAGG<sup>4</sup>

Craig MORITZ<sup>3</sup>

<sup>1</sup>Biodiversity Program, Queensland Museum, South Brisbane, Qld; <sup>2</sup>College of Science & Engineering, James Cook University, Townsville, Qld; <sup>3</sup>Research School of Biology and Centre for Biodiversity Analysis; Australian National University, Canberra, ACT; <sup>4</sup>Royal Botanic Gardens & Domain Trust, Sydney, NSW.

Citation: Couper, P.J., Hoskin, C.J., Potter, S., Bragg, J.G. & Moritz, C. 2018. A new genus to accommodate three skinks currently assigned to *Proablepharus* (Lacertilia: Scincidae). *Memoirs of the Queensland Museum – Nature*. 60: 227–231. Brisbane. ISSN 0079-8835 (Online), ISSN 2204-1478 (Print). Accepted: 14 December 2017. First published online: 29 January 2018.

<https://dx.doi.org/10.1082/j.2204-1478.60.2017.2017-15>

LSID: urn:lsid:zoobank.org:pub:C4157324-F295-485A-9752-D655F165CDB9

## ABSTRACT

The genus *Proablepharus* currently contains five species (*P. barrylyoni*, *P. kinghorni*, *P. naranjicaudus*, *P. reginae* and *P. tenuis*). Morphologically, these are readily separated into two groups: the small, almost patternless species (*P. reginae* and *P. tenuis*) and the larger, striped species (*P. kinghorni*, *P. barrylyoni* and *P. naranjicaudus*). We present genetic and morphological data to demonstrate that these two groups are generically distinct from each other. As *P. reginae* is the type species for *Proablepharus*, we erect a new genus, *Austroablepharus* gen. nov., for the *kinghorni* group and designate *A. kinghorni* as the type species. □ *Proablepharus*, *Austroablepharus* gen. nov., *Australia*, *morphology*, *genetics*.

The genus *Proablepharus* was erected by Fuhn (1969) in a revision of skinks assigned to *Ablepharus* Fitzinger 1823. Fuhn (1969) separated *A. reginae* Glauert 1960 and *A. tenuis* Broom 1896 into *Proablepharus* which he defined by the following traits: 'pentadactyle; no supranasals; frontoparietals paired; interparietal present'. Fuhn failed to designate a type species for the genus. Greer (1974) considered *Proablepharus* as containing three species: *P. reginae*, *P. davisii* (Copland 1952) and *P. kinghorni* (Copland 1947), and designated *Proablepharus reginae* as the type-species. He left *Ablepharus tenuis* and *Ablepharus broomensis* Lönnberg & Andersson 1913 as species *incertae sedis* (i.e., unassigned)

pending the opportunity to examine a palatal feature of their skulls. Greer (1974) diagnosed *Proablepharus* as: 'Small (snout-vent length 45 mm or less), terrestrial skinks which lack supranasals, possess an ablepharine eye and have the interparietal distinct from the frontoparietal(s). Frontoparietals distinct (*reginae*) or fused (*kinghorni* and *davisii*); frontal in contact with 2 of 4 supraoculars (*reginae* and *kinghorni*) or 1 of 3 supraoculars (*davisii*).' Storr (1975), in discussing the two Western Australian species, recognised *P. reginae* and *P. tenuis*, and placed *broomensis* and *davisii* in the synonymy of *P. tenuis*. This left *Proablepharus*



FIG. 1. *Proablepharus reginae* showing a drab brown, relatively uniform pattern; Tennant Creek, Northern Territory (Image: Steve Wilson).



FIG. 2. *Austroablepharus kinghorni*, type species for the genus, with characteristic stripes and an orange tail; Durham Downs, Queensland (Image: Steve Wilson).

as containing three species: *P. reginae*, *P. tenuis* and *P. kinghorni*.

An additional two species, *P. naranjicaudus* Greer, Fisher & Horner 2004 and *P. barrylyoni* Couper, Limpus, McDonald and Amey 2010 have since been described and *Proablepharus* is currently recognised as a genus of five species (Cogger 2014, Wilson & Swan 2010). In appearance, these are easily separated into two groups: the small drab, practically patternless species (*P. reginae*, Fig. 1; *P. tenuis*) and the larger, distinctively striped species (*P. kinghorni*, Fig. 2; *P. barrylyoni*, *P. naranjicaudus*). Using both genetic and morphological data, we herein recognise these two groups as generically distinct. *Proablepharus reginae* is the type species for the small, patternless group and we here describe the large, striped group as a new genus, *Austroablepharus*, with *A. kinghorni* as the type species.

## METHODS AND RESULTS

**Genetic data.** The phylogeny presented herein comes from a current analysis of exon data across Australian eugongylid skinks (Bragg *et al.*, in prep.). Here we just present a summary of the methods and results for the clade containing skinks currently assigned to *Proablepharus*. The tree presented (Fig. 3) is a concatenated phylogeny based on 1107314 base pairs of unphased exon nDNA data across 115 individuals of the species

listed (with less than <10% missing data among species). The method for gathering the exon data, in-solution exon capture, is described in Bragg *et al.* (2016). The tree is constructed using a maximum likelihood approach in RAxML (8.2.3, Stamatakis 2014) based on the rapid bootstrap algorithm, a random starting tree, the GTRGAMMA model and 100 bootstrap replicates. In addition, a summary multispecies coalescent analysis using ASTRAL-II (4.7.9, Mirarab & Warnow 2015) supported the same nodes with 100% support, based on maximum likelihood gene trees also run in RAxML.

The phylogeny contains *P. reginae* (n = 8), *P. tenuis* (n = 26) and *P. kinghorni* (n = 4), but does not contain *P. naranjicaudus* and *P. barrylyoni* because tissue samples are not available for these two species. Our analyses of the genetic data retrieved a scheme of relationships in which the three species sampled were not monophyletic. *Proablepharus kinghorni* is more closely related to *Acritoscincus* and *Morethia* than it is to the clade containing *P. reginae* and *P. tenuis*. Support values for these relationships are very high, in all cases being 100% support from multispecies coalescent analysis and maximum likelihood (Fig. 3). The relationships shown here are supported by the broader species tree analysis across the Australian eugongylid skinks (Bragg *et al.*, in prep.).

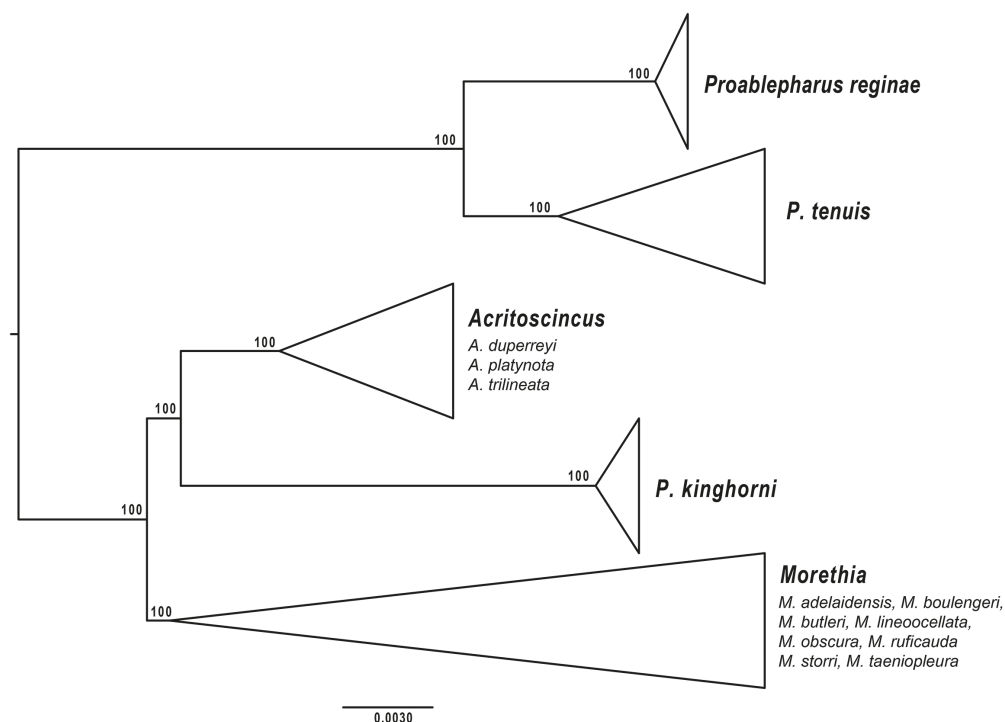


FIG. 3. An exon nDNA phylogeny of the eugongylid clade containing *P. reginae*, *P. tenuis* and *P. kinghorni* (now *Austroablepharus kinghorni*) and allied skink genera. See text for details on data and analysis.

**Morphological data.** The ‘kinghorni group’ are most readily separated from *Proablepharus* by their larger size (SVL 45–51 mm *vs* 32–41 mm), a tendency for fewer midbody scale rows (20–24 *vs* 22–28), elevated paravertebral scale and presacral vertebrae counts (55–67 *vs* 52–57 paravertebrals; 30–36 *vs* 27–31 presacrals), fused frontoparietals (*vs* divided in *P. reginae* and *P. tenuis*, although the latter can occasionally also have a partly or fully fused condition), and keeled or mucronate subdigital lamellae (for *kinghorni* and *naranjicaudus* *vs* not keeled in *P. reginae* and *P. tenuis*) (Table 1). There are also distinct pattern differences, with adults of the ‘kinghorni group’ exhibiting dark longitudinal stripes (present but less distinct in large, duller specimens) *vs* adult *P. reginae* and *P. tenuis* drab and practically patternless, and adults of the ‘kinghorni group’ having obvious red/orange tail pigmentation (*vs* brown in adult *P. reginae* and *P. tenuis*; these two species have red tails as

juveniles but the colour is lost with age; Greer 1980) (Table 1).

Assertions below regarding the polarity of the morphological characters uniting the ‘kinghorni group’ follow Fuhn (1969) and Greer (1979, 1983). The fused frontoparietals in the ‘kinghorni group’ are interpreted as a derived character state (Greer 1979), as are the keeled or mucronate (i.e., ending in a short sharp point) state of the subdigital lamellae (Greer 1979) in *kinghorni* and *naranjicaudus*. The polarity of the lamellae condition of *barrylyoni* is at this time unclear until the phylogenetic relationships among members of the ‘kinghorni group’ are resolved. The modal (and primitive) number of presacral vertebrae for skinks with well-developed limbs is 26 (Hoffstetter & Gasc 1969; Greer 1983). Upward shifts from this state, marked by a reduction in limb length relative to body length, are considered progressive derivations (Greer 1983). Hence, the condition is derived for both *Proablepharus* and the

TABLE 1. Characters separating the small brown *Proablepharus* spp. from the larger, striped *Austroablepharus* species.

Character	<i>Proablepharus reginae</i>	<i>Proablepharus tenuis</i>	<i>Austroablepharus kinghorni</i>	<i>Austroablepharus barrylyoni</i>	<i>Austroablepharus naranjicaudus</i>
SVL (mm)	41	32	45	51	46
Presacral vertebrae	27–31	28–31	31–33	32–36	30–33
Paravertebral scales	52–57	53	55–64	58–67	58–64
Midbody scale rows	24–28	22–26	20–22	21–22	21–24
Frontoparietals	divided	divided, partially or fully fused	fused	fused	fused
Subdigital lamellae	not keeled	not keeled	finely keeled	not keeled	mucronate
pattern	plain	plain	striped	striped	Striped
Position of dark pigment on body scales	central	central	lateral edges	lateral edges	lateral edges
Adult breeding male tail colour	brown	brown	orange flush	orange flush	orange flush

'kinghorni group' but more so in the latter, more elongate, genus.

The differences in morphology between *Proablepharus* (*P. reginae*, *P. tenuis*) and the larger, striped species of the 'kinghorni group' (*kinghorni*, *barrylyoni*, *naranjicaudus*) are supported by the genetic groupings retrieved, at least to the extent of the species included in the genetic study. The 'kinghorni group' is distinguished from its sister genus, *Acritoscincus*, by the condition of the lower eyelid: immovable (preablepharine) *vs* movable. It is distinguished from *Morethia*, its next closest relative, by the condition of the supraocular/supraciliary contact: the primitive condition in the 'kinghorni group' where the supraciliaries form a relatively straight-edged line of contact with the supraoculars *vs* a derived modal condition in *Morethia* where the supraciliaries are interdigitated with the supraoculars (Greer 1980). The species in the 'kinghorni group' are more elongate than *Morethia*, as expressed by the higher number of presacral vertebrae (30–36 *vs* 27–31; data from Greer 2007) and hence this is regarded as a derived character state that distinguishes the 'kinghorni group' from *Morethia*.

## NEW GENUS

### *Austroablepharus* gen. nov.

**Suggested common name.** Grassland Striped Skinks.

**Type species.** *Austroablepharus kinghorni* (Copeland, 1947)

**Species.** *A. kinghorni* (Copland 1947), *A. naranjicaudus* (Greer, Fisher & Horner 2004), *A. barrylyoni* (Couper, Limpus, McDonald & Amey 2010).

**Etymology.** Austro for Australia and ablepharus referring to an immovable lower eyelid that is partially fused to the upper eyelid to form a permanent spectacle.

**Diagnosis.** A genus of small skinks (adult SVL  $\leq$  51mm ) with pentadactyl limbs,  $\leq$  24 midbody scale rows,  $\geq$  55 paravertebral scales, and  $\geq$  30 presacral vertebrae. Limbs narrowly to widely separated when adpressed. Supranasals absent and nasals undivided; prefrontals large, in contact or narrowly separated; eye moderate-sized with lower eyelid immovable, partially fused to upper eyelid to form a permanent spectacle but with a distinct slit between the lower eyelid and the supraciliaries (preablepharine); frontoparietals fused; interparietal free or fused; ear opening very small; parietals in contact; body pattern consisting of alternating

pale and dark stripes (each dorsal body scale with a pale centre and dark lateral edges); adult tail colouration red/orange.

#### ACKNOWLEDGEMENTS

We are grateful to Harold Cogger for his helpful advice on nomenclature, Ross Sadlier for his constructive review comments, and Steve Wilson for providing the photos.

#### LITERATURE CITED

- Bragg, J. G., Potter, S., Bi, K. & Moritz, C. 2016. Exon capture phylogenomics: efficacy across scales of divergence. *Molecular Ecology Resources* **16**(5): 1059–1068.
- Broom, R. 1896. On two new species of *Ablepharus* from north Queensland. *Annals and Magazine of Natural History* (6) **18**: 342–343.
- Cogger, H.G. 2014. *Reptiles and Amphibians of Australia*. (CSIRO Publishing, Collingwood) 1033 pp.
- Copland, S.J. 1947. Taxonomic notes on the genus *Ableparus* (Sauria: Scincidae). I. A new species from the Darling River. *Proceedings of the Linnaean Society of New South Wales* **71**: 282–286.
1952. Taxonomic notes on the genus *Ablepharus* (Sauria: Scincidae). III. A new species from north-west Australia. *Proceedings of the Linnaean Society of New South Wales*. **77**: 121–125.
- Couper, P.J., Limpus C.J., McDonald, K.R. & Amey A.P. 2010. A new species of *Proablepharus* (Scincidae: Lygosominae) from Mt Surprise, north-eastern Queensland, Australia. *Zootaxa* **2433**: 62–68.
- Fitzinger in Lichtenstein H. 1823: *Verzeichniss der Doubletten des Zoologischen Museums der Königlichen Friedrich-Wilhelm-Universität zu Berlin nebst Beschreibung vieler bisher unbekannter Arten von Säugethieren, Vögeln, Amphibien und Fischen*. (Königlich Preussische Akademie der Wissenschaften: Berlin) p.103.
- Fuhn, I.E. 1969. The “polyphyletic origin of the genus *Ablepharus* (Sauria: Scincidae). A case of parallel evolution. *Zeitschrift für zoologische Systematik und Evolutions Forschung*. **7**: 67–76.
- Glauert, L. 1960. Herpetological miscellanea. XII. The family Scincidae in Western Australia. Part 3. The genus *Ablepharus*. *Western Australian Naturalist* **7**: 115–122.
- Greer, A. E. 1974. The generic relationships of the scincid lizard genus *Leiopisma* and its relatives. *Australian Journal of Zoology Supplementary Series No. 31*: 1–67.
1979. A phylogenetic subdivision of Australian skinks. *Records of the Australian Museum* **32**(8): 339–371. [30 September 1979]. <https://doi.org/10.3853/j.0067-1975.32.1979.459>
1980. A new species of *Morethia* (Lacertilia: Scincidae) from northern Australia, with comments on the biology and relationships of the genus. *Records of the Australian Museum* **33**(2): 89–122. <https://dx.doi.org/10.3853/j.0067-1975.33.1980.276>
1983. The Australian scincid lizard genus *Calyptotis* De Vis: resurrection of the name, description of four new species, and discussion of relationships. *Records of the Australian Museum* **35**(1): 29–59. <https://doi.org/10.3853/j.0067-1975.35.1983.301>
1989. *The Biology and Evolution of Australian Lizards*. (Surry Beatty & Sons Pty Ltd: Chipping Norton, NSW) 264 pp.
2007. *The Biology and Evolution of Scincid Lizards*. Online <https://www.academia.edu/s/c00c322d45/the-biology-and-evolution-of-scincid-lizardsdoc> (accessed 08/12/2017).
- Hoffstetter, R., & I.P. Gasc., 1969. Vertebrae and ribs of modern reptiles. ‘*Biology of the Reptilia*,’ Vol. I, Morph. A., pp. 201–310.
- Lönnberg, E. & Andersson, G.L. 1913. Results of Dr E. Mjöberg’s Swedish Scientific Expeditions to Australia 1910–1913. III. Reptiles. *Kungliga Svenska Vetenskapsakademiens Handlingar* **52**(3): 1–17.
- Mirarab, S. & Warnow, T. 2015. ASTRAL-II: coalescent-based species tree estimation with many hundreds of taxa and thousands of genes. *Bioinformatics* **31**: i44–i52.
- Stamatakis, A. 2014. RAxML version 8: a tool for phylogenetic analysis and post-analysis of large phylogenies. *Bioinformatics* **30**: 1312–1313.
- Storr, G.M. 1975 The genus *Proablepharus* (Scincidae, Lacertilia) in Western Australia. *Records of the Western Australian Museum*, **3** (4): 335–338.
- Wilson, S. & Swan, G. 2010. *A Complete Guide to Reptiles of Australia* (4<sup>th</sup> edition) (New Holland Publishers Pty Ltd: Sydney) 592 pp.