

WILSON

1931

1
1
3

1931

No. 2.

PRINTED UNDER CONTRACT BY THE HONORABLE THE TREASURER

IRLAND WILSON, B.Com., D.Sel. Phil., COMMONWEALTH STATISTICIAN.

CONTENTS.

	Page
EMPLOYMENT AND UNEMPLOYMENT.	
Index of Employment in Factories	2
Index of Employment in Retail Stores	3
New South Wales: Employment and Unemployment	5
Queensland: Employment and Unemployment	6
Trade Union Unemployment Returns	6
OVERSEA TRADE.	
Balance of Oversea Trade	7
Imports of Merchandise: Economic Classes	9
Imports of Merchandise: Degrees of Manufacture	9
Exports of Merchandise: Principal Commodities	9
PRICES.	
Export Prices and Export Price Index	10
Export Price Index (Changing Base)	11
Wholesale Price Index	12
Primary Production Price Indexes	15
Retail Prices and Wages-rate Indexes	14
Retail Prices, Miners and Basic Wage Rates	16
Security Price Indexes: New South Wales	17
Security Price Indexes: Melbourne and Queensland	17
BUILDING AND PRODUCTIVE ACTIVITY.	
Building Permits: Metropolitan and Provincial	18, 19
Building Permits: Six Capital Cities and Suburbs	20
Manufacturers' Indexes of Productive Activity	21
TRANSPORT.	
Metropolitan State Railways: Freight, Passengers and Revenue	22
Metropolitan Railways: Freight Tonnes Carried	23
Interstate Shipping Cargoes	24
Oversea Shipping Cargoes	25
INTERNAL TRADE.	
Wholesale Trade	26
Retail Trade	27
BANKING AND EXCHANGE.	
Australian Trading Banks	28
Commonwealth Bank of Australia	29
All Clearing-paying Banks	30
Bank Clearings	31
Amounts on Deposit in Savings Banks	32
Interest Rates and Bond Yields: Australia	32
Rates of Interest on First Mortgages: New South Wales	33
Exchange Rates and Gold Prices	33
PUBLIC FINANCE.	
Commonwealth and States: Revenue and Expenditure	34
MISCELLANEOUS.	
Foot Office Activity	35
Motor Vehicle Registrations	36
Foreign Tourists and Migrants	37
Bankruptcies and Insolvencies	38
WORLD PRICES AND PRODUCTION.	
Wholesale Price Indexes: Principal Countries	39
World Production and Trade	40
GRAPHS.	
Oversea Trade, Prices, Bond Yields, Bank Clearings	41
Employment, Railway Freights, Pig Iron, Building, Miscellaneous	42

INDEX OF EMPLOYMENT IN FACTORIES. (a)

(Base: 1928-29 = 100.)

Period.	New South Wales.	Victoria.	Queensland.	South Australia.	Western Australia.	Tasmania.	Australian Index.	
							Un-adjusted.	Divided by Index of Employee Population.
<i>Number of employees in—</i>								
1928-29	174,120	149,266	43,436	35,376	19,799	9,984	31,981	..
<i>Index for—</i>								
1928-29	100	100	100	100	100	100	100	100
1929-30	90	97	94	87	94	104	93	92
1930-31	70	80	84	64	69	84	75	72
1931-32	69	81	79	64	63	85	74	71
1932-33	76	92	82	71	70	87	82	77
1933-34	85	100	88	69	77	92	90	84
1934-35	97	108	94	91	85	100	100	92
1935-36	107	117	99	105	100	110	109	100
1936-37	115	121	106	111	107	114	115	105
1936-37—								
July	110	116	106	105	105	108	111	101
August	110	116	109	104	104	104	111	101
September	111	118	112	105	102	103	113	102
October	114	120	110	105	104	111	114	104
November	115	121	108	109	106	115	115	105
December	114	120	105	111	106	116	115	104
January	113	116	97	107	106	116	112	101
February	119	123	99	115	108	122	118	106
March	119	124	102	115	108	124	118	107
April	117	127	103	118	109	117	119	107
May	119	126	108	119	106	115	120	108
June	120	126	110	119	107	115	120	108
1937-38—								
July	119	123	113	115	107	114	119	107
August	121	124	119	114	108	111	120	108
September	122	126	118	114	107	112	122	109
October	125	128	..	113	107	116

(a) Excluding Working Proprietors.

The estimated percentage changes in employment in factories from September, 1936, to September, 1937 (the latest month for which figures are available for all States) are:—New South Wales, + 10.1; Victoria, + 7.0; Queensland, + 3.2; South Australia, + 8.3; Western Australia, + 4.6; Tasmania, + 3.8; Australia, + 8.0 (or, taking account of the growth of employee population, + 6.8).

INDEX OF EMPLOYMENT IN RETAIL STORES.

(Base : July, 1933 = 100.)

Period.	New South Wales.	Victoria.	Queensland.	South Australia.	Western Australia.	Tasmania.	Australian Index.	
							Un-adjusted.	Divided by Index of Employee Population.
1933—July	100	100	100	100	100	100	100	100
1933—34	103	107	101	102	99	106	104	103
1934—35	111	118	106	108	105	108	112	110
1935—36	118	130	109	114	110	112	119	116
1936—37	124	137	111	115	115	119	125	120
1936—37—								
July	122	130	109	116	113	107	121	117
August	120	128	109	115	111	113	120	116
September	120	128	109	118	113	115	120	116
October	121	133	110	112	116	116	122	118
November	123	139	111	115	116	119	125	121
December	137	155	121	125	127	132	158	133
January	123	138	112	112	116	120	125	120
February	125	137	111	111	114	122	125	120
March	123	135	111	111	114	118	123	118
April	124	136	109	113	114	120	124	119
May	126	138	111	114	113	121	126	120
June	126	141	110	114	113	121	126	121
1937—38—								
July	129	137	110	115	115	124	127	121
August	126	133	110	112	113	121	124	118
September	126	135	110	117	113	123	125	119
October	127	140	114	123

The estimated percentage changes in employment in retail stores from September, 1936, to September, 1937 (the latest month for which figures are available for all States) are:—New South Wales, + 4.7; Victoria, + 4.9; Queensland, + 0.9; South Australia, - 0.5; Western Australia, - 0.1; Tasmania, + 6.4; Australia, + 3.9 (or, taking account of the growth of employee population, + 2.9).

NEW SOUTH WALES: EMPLOYMENT AND UNEMPLOYMENT.

The following table, compiled by the Government Statistician of New South Wales from Census data, the returns of private employers accompanying remittances of wages tax, and returns of Government employment, gives the best measure available of the course of *total employment and unemployment* in New South Wales.

Month.	Percentage of all who are dependent on and available for employment—			
	Including full-time equivalent of part-time relief workers with unemployed.		Excluding full-time equivalent of part-time relief workers from employed.	
	Employed.	Unemployed.	Employed.	Unemployed.
1933—June	74.4	25.6	73.5	26.5
1934—June	80.5	19.5	77.8	22.2
1935—June	85.9	14.1	83.1	16.9
1936—June	89.3	10.7	87.1	12.9
1936—				
July	89.7	10.3	87.6	12.4
August	89.4	10.6	87.5	12.5
September	90.0	10.0	88.6	11.4
October	91.4	8.6	90.0	10.0
November	91.6	8.4	90.1	9.9
December	92.9	7.1	91.5	8.5
1937—				
January	90.4	9.6	89.2	10.8
February	92.2	7.8	90.8	9.2
March	92.2	7.8	90.8	9.2
April	92.6	7.4	91.3	8.7
May	93.1	6.9	91.9	8.1
June	93.5	6.5	92.3	7.7
July	93.8	6.2	92.6	7.4
August	94.3	5.7	93.0	7.0
September	95.1	4.9	93.9	6.1
October	96.2	3.8	95.1	4.9

Revised.—See Note 2.

NOTES.

1. The index of employment is the ratio of the number in employment to the estimated number of wage earners available for employment. The index of unemployment is the residue, but both indexes are derived by modifying the Census ratios in accordance with subsequent changes.

2. "Number in employment" is virtually a direct record; "number of available wage earners" is an estimate derived by increasing the total wage earners in employment (plus unemployed) at the Census of 1933 in ratio to the annual increase in persons aged 15 to 64 years. In order to increase the degree of precision in the index, adjustment has now been made in the number of available wage earners thus estimated to allow for (a) increase in the proportion of females who are wage earners, (b) youths who—according to details recently made available—were without occupation but were not recorded in the wage-earning group at the Census of 1933. Adjustment for seasonal variations in employment is not made.

3. At the Census of 1933, 15,142 persons, or 1.8 per cent. of total dependent on employment, were unemployed by reason of illness, accident, etc., or voluntarily. These are excluded from the above indexes, which relate to percentages of available wage earners employed and unemployed.

4. The percentages of unemployment shown above are approximations relating to all wage earners of both sexes. Separate estimates for males and females cannot be made from the data available. It is known, however, that there is relatively little unemployment among females; unemployment among males is probably between 1 per cent. and 1.5 per cent. greater than the ratio shown above for both sexes combined.

QUEENSLAND: EMPLOYMENT AND UNEMPLOYMENT.

The following table, compiled by the Queensland Bureau of Industry from the amount of contributions to the Unemployment Insurance Scheme, wages paid from the Unemployment Relief Fund, and other records, gives the best measure available of *total adult male employment* in Queensland.

MEN WAGE AND SALARY EARNERS.

Three months ended—	Percentage of all who are dependent on employment.			
	Including full-time equivalent of relief workers with employed.		Excluding "Intermittent Relief Workers" from employed.	
	Employed.	Unemployed.	Employed.	Unemployed.
1933—June	79.0	21.0	72.9	27.1
1934—June	85.0	15.0	80.2	19.8
1935—June	89.9	10.1	85.2	14.8
1936—June	91.8	8.2	86.4	13.6
1936—				
July	92.6	7.4	87.1	12.9
August	94.3	5.7	89.0	11.0
September	94.7	5.3	89.9	10.1
October	93.6	6.4	89.4	10.6
November.. .. .	92.0	8.0	88.3	11.7
December	91.9	8.1	88.1	11.9
1937—				
January	92.7	7.3	88.8	11.2
February	91.8	8.2	87.8	12.2
March	91.4	8.6	87.8	12.2
April	93.6	6.4	90.0	10.0
May	94.0	6.0	90.3	9.7
June	94.3	5.7	90.5	9.5
July	94.5	5.5	90.7	9.3
August	94.9	5.1	91.2	8.8
September	95.0	5.0	91.4	8.6

NOTES.

1. The measurement is in terms of "full-time" employment, including its equivalent in "rationed" employment.
2. Normal seasonal variations are not recorded, the figures showing the trend apart from such changes.
3. The indexes have been adjusted to allow for the estimated increase in the number of men dependent on employment.

TRADE UNION UNEMPLOYMENT RETURNS.

The only regular records of unemployment available in comparable form over a considerable period are the quarterly percentages reported by trade unions to the Commonwealth Statistician. The membership of the reporting unions consists predominantly of males, and represents at present about 54 per cent. of the total trade union membership and about 20 per cent. of all wage and salary earners.

The percentages stated for New South Wales and Queensland differ from those given on previous pages partly because of differences in the field of employment covered, and partly because the trade union returns relate only to the position as it is known to the unions.

Period.	New South Wales.	Victoria.	Queensland.	South Australia.	Western Australia.	Tasmania.	Australia.
	%	%	%	%	%	%	%
1928-29	10.6	9.7	7.0	14.6	9.1	10.4	10.2
1929-30	15.9	14.6	8.0	18.9	13.8	14.1	14.6
1930-31	27.4	23.1	13.6	29.1	24.1	26.0	24.3
1931-32	32.0	26.5	18.1	33.8	28.7	27.6	28.7
1932-33	31.2	24.8	17.4	32.0	28.0	22.4	27.5
1933-34	26.7	19.8	13.8	28.3	21.0	18.3	22.7
1934-35	23.6	15.7	9.8	22.0	15.7	17.3	18.9
1935-36	17.4	11.9	8.3	13.6	11.0	13.6	14.0
1936-37	12.8	10.1	7.4	9.4	6.0	11.3	10.6
1936—							
August	14.8	11.7	7.2	10.0	7.4	14.0	12.0
November	13.3	9.7	7.2	9.9	5.6	12.9	10.7
1937—							
February	11.8	9.5	7.7	9.5	5.4	7.9	9.9
May	11.4	9.6	7.6	8.3	5.6	10.4	9.7
August	10.5	9.5	7.2	8.4	6.6	10.6	9.3

INDUSTRIAL GROUPS: CHANGE FROM MAY TO AUGUST, 1937.

Manufacturing—I. Wood, furniture, &c., 5.8% to 5.5%; II. Engineering, metal works, &c., 6.5% to 5.4%; III. Food, drink and tobacco, &c., 18.1% to 20.0%; IV. Clothing, hats, boots, &c., 11.1% to 12.5%; V. Books, printing, &c., 4.9% to 4.1%; VI. Other Manufacturing, 8.5% to 8.6%; VII. Building, 11.3% to 9.1%; VIII. Mining, quarrying, &c., 16.9% to 13.2%; IX. Land Transport, other than railway and tramway services, 11.5% to 12.6%; IX., XI., XII., XIII. and XIV. Other and Miscellaneous, 8.0% to 8.0%; All Groups, 9.7% to 9.3%.

BALANCE OF OVERSEA TRADE.

In the following table the oversea trade of the Commonwealth in physical commodities has been set out in a form which distinguishes between the ordinary trade in commodities other than gold, those movements of gold which may be regarded as resulting from current Australian production, and those movements of gold which cannot be attributed to the fact that Australia is a gold-producing country. The balance of trade on "current" account (that is, including credits from gold produced rather than gold exported) is given in columns D and E. The total balance of trade, as officially recorded, is given by the total of columns D and F.

Out of the credits mentioned above, together with those accruing from other "invisible" sources and existing balances of "oversea funds", Australia has to provide for various recurrent charges incurred overseas, and some payments of a capital nature. Chief among the former are the oversea interest commitments of the Australian Governments and other public bodies, which for the present trade year are estimated at approximately £22,000,000 sterling.

£'000 Sterling.

Period.	Merchandise and Silver.		Gold.	Net Credits from Current Items.		Gold.
	Imports.	Exports.	Current Production.	Excess of Exports and Gold Production over Imports.	Progressive totals from 1st July.	Net Exports in excess of current Production.
	A.	B.	C.	D.	E.	F.
1928-29	143,300	138,648	1,872	-2,789	..	767
1929-30	130,788	98,259	1,874	-30,655	..	24,704
1930-31	60,586	77,050	2,157	18,621	..	9,745
1931-32	44,059	75,813	3,609	35,363	..	5,273
1932-33	56,872	78,548	4,606	26,282	..	12,302
1933-34	59,502	90,715	5,671	36,882	..	978
1934-35	72,440	82,132	5,891	15,583	..	522
1935-36	83,617	98,655	7,338	22,376	..	1,279
1936-37	90,642	117,903	8,972	36,233	..	5
1936-37—						
July	8,374	5,377	728	-2,269	-2,269	137
August	7,397	4,726	692	-1,979	-4,248	-129
September	7,058	7,620	704	1,266	-2,982	152
October	7,881	10,033	745	2,897	-85	-13
November	7,884	12,591	720	5,427	5,342	-80
December	7,147	13,916	867	7,656	12,978	48
January	7,588	9,331	652	2,595	15,373	208
February	6,136	12,620	765	7,249	22,622	-234
March	7,802	12,762	734	5,694	28,316	136
April	8,145	11,265	767	3,899	32,205	95
May	6,766	10,180	797	4,211	36,416	240
June	8,466	7,482	601	-183	36,233	-61
1937-38 (a)—						
July	8,811	8,561	783	535	533	291
August	8,985	6,573	802	-1,610	-1,077	72
September	9,477	8,461	809	-207	-1,284	108
October	9,284	9,940	770	1,426	142	147
November	10,962	12,317

(a) Subject to revision.

IMPORTS OF MERCHANDISE: ECONOMIC CLASSES.

Period.	Producers' Materials for use in—										Fuels and Lubricants.	Auxiliary Aids to Production.	Munitions and War Stores.	
	Building and Construction.		Rural Industries.		Manufacturing.		Total.		Class II.	Class III.				Class VII.
	Class Ia.	Class Ia.	Class Ic.	Class I.	Class II.	Class III.	Class VII.							
Estg. 000	%	Estg. 000.	%	Estg. 000.	%	Estg. 000.	%	Estg. 000.	%	Estg. 000.	%	Estg. 000.	%	
1928-29 ..	10,192	7.1	1,906	1.3	53,147	37.1	65,245	45.5	9,543	6.7	4,948	3.5	167	0.1
1932-33 ..	1,903	3.3	955	1.7	27,227	47.9	30,085	52.9	5,065	8.9	4,446	7.8	105	0.2
1933-34 ..	2,367	4.0	875	1.4	26,559	44.7	29,799	50.1	4,379	7.4	3,899	6.6	142	0.3
1934-35 ..	3,358	4.6	976	1.3	31,609	44.7	35,943	49.6	4,421	6.1	3,692	5.1	97	0.1
1935-36 ..	3,928	4.7	1,261	1.5	34,050	49.8	39,239	47.0	5,630	6.7	4,179	5.0	343	0.4
1936-37 ..	3,653	4.0	1,498	1.7	36,160	39.9	41,311	45.6	6,537	7.2	4,292	4.7	85	0.1
1937-38—														
September 3 months ended	407	4.3	140	1.5	4,018	42.1	4,565	48.2	653	6.9	311	3.3	10	0.1
Sept. ...	1,152	4.2	422	1.6	11,318	41.5	12,892	47.3	1,943	7.1	1,017	3.7	25	0.1

Period.	Capital Equipment.					Finished Consumers' Goods.								
	Producers' Equipment.	Transport Equipment.				Food, Beverages and Tobacco.	Clothing and Accessories.			Total.				
		Road Vehicles and complete parts.	Railway Equipment, vessels and aircraft.	Class VI. a, c, d.	Class VI. a, b, c.		Class VI. d.	Class VI. e-f.	Class VI.					
Estg. 000.	%	Estg. 000.	%	Estg. 000.	%	Estg. 000.	%	Estg. 000.	%	Estg. 000.	%			
1928-29 ..	12,077	8.4	15,216	10.6	1,471	1.0	10,606	7.4	2,925	2.1	21,683	11.7	34,614	21.2
1932-33 ..	3,110	5.5	2,159	3.8	540	1.6	3,445	6.0	152	0.3	7,736	13.6	11,333	19.9
1933-34 ..	3,947	6.6	3,820	6.4	543	0.9	4,530	7.7	252	0.4	8,039	13.6	12,901	21.7
1934-35 ..	5,811	8.0	6,149	8.5	1,067	1.3	4,752	6.6	538	0.5	10,131	11.0	15,241	21.1
1935-36 ..	7,909	9.5	8,613	10.3	833	1.0	4,720	5.7	434	0.5	11,615	13.3	16,769	20.1
1936-37 ..	9,501	10.3	9,185	10.2	1,752	1.9	5,427	6.0	456	0.5	12,228	13.5	18,141	20.0
1937-38—														
September 3 months ended	1,042	11.0	1,092	11.5	80	0.8	393	4.2	62	0.6	1,268	13.1	1,723	18.2
Sept. ...	2,855	10.4	3,063	11.3	384	1.4	1,227	4.5	179	0.6	3,696	14.6	5,102	18.7

IMPORTS OF MERCHANDISE : DEGREE OF MANUFACTURE.

£'000 Sterling.

Period.	Producers' Materials (Class I.)			Finished Consumers' Goods (Class VI.)			Total Imports of Merchandise (All Classes)			
	Crude.	Simply transformed.	Elaborately transformed.	Crude.	Simply transformed.	Elaborately transformed.	Crude.	Simply transformed.	Elaborately transformed.	Total.
1928-29	15,199	5,252	44,794	906	5,176	23,532	16,104	20,226	105,951	143,281
1932-33	6,141	2,898	21,648	347	1,844	9,142	6,488	11,376	38,979	56,843
1933-34	6,353	2,921	20,525	345	2,752	9,803	6,698	11,632	41,105	59,435
1934-35	8,027	3,555	24,361	411	2,726	12,104	8,439	12,626	51,356	72,421
1935-36	9,612	3,552	26,075	226	2,753	13,810	9,838	14,064	59,619	83,521
1936-37	10,779	3,922	26,610	477	3,190	14,475	11,255	15,845	65,492	90,592
1937-38—										
September ..	1,247	402	2,916	44	240	1,439	1,291	1,513	6,672	9,476
3 months ended Sept.	3,598	1,152	8,342	131	752	4,219	3,529	4,472	19,260	27,261

NOTE.—Class II. consists entirely of goods "simple transformed", and Classes IV., V. and VII. entirely of goods "more elaborately transformed". Class III. is about equally divided between goods "simple" and "more elaborately transformed".

EXPORTS OF MERCHANDISE : PRINCIPAL COMMODITIES.

£'000 Australian Currency.

Period.	Wool.	Wheat and Flour.	Dates.	Sugar.	Meats.	Hides and Skins.	Lead.	Dried Fruits.	Fresh Fruits.	Total Exports—Merchandise and Silver.
1928-29	61,615	26,355	7,159	2,392	6,342	9,291	3,250	2,591	945	138,648
1929-30	36,601	14,985	7,002	2,217	6,264	6,593	3,453	2,171	1,865	98,259
1930-31	32,603	18,258	8,621	1,865	5,753	3,643	2,425	2,250	1,588	90,464
1931-32	32,103	23,055	10,250	2,510	6,370	2,316	2,271	1,966	2,086	96,512
1932-33	36,408	21,954	8,940	1,491	6,001	2,369	2,388	2,231	2,410	98,399
1933-34	57,126	12,141	8,194	2,297	7,097	4,391	2,421	2,652	2,012	113,868
1934-35	39,266	16,220	9,587	2,198	8,847	3,506	2,417	2,166	1,822	103,170
1935-36	52,546	18,571	9,833	2,178	8,754	5,650	3,849	1,987	2,027	123,853
1936-37	62,505	24,352	8,802	2,890	10,332	7,302	4,553	2,060	1,960	147,670
1937-38—										
July	1,831	707	400	227	586	811	231	274	58	6,735
August	822	940	351	522	442	726	402	109	35	5,919
September ..	3,237	1,637	542	582	456	744	295	156	55	9,344
October	5,802	1,249	777	273	1,108	587	551	35	43	12,567
November ..	8,537	1,287	1,034	458	1,539	536	309	23	2	15,770
December ..	10,227	1,769	865	447	1,237	644	344	11	11	17,430
January	4,520	2,743	762	296	832	479	425	3	0	11,687
February ..	8,302	2,759	879	74	615	545	637	9	74	15,805
March	8,094	3,027	749	1	675	507	440	78	25	15,983
April	5,345	2,173	991	1	760	592	615	659	723	14,109
May	3,858	3,287	903	2	958	539	362	473	397	12,750
June	1,750	2,768	551	7	1,078	592	562	235	151	9,571
1937-38—										
July	3,616	1,929	363	368	860	891	264	200	73	10,722
August	1,161	1,499	242	839	602	995	283	274	56	8,212
September ..	3,953	793	389	642	761	693	755	70	34	10,597
October	4,953	1,362	869	502	1,205	755	542	112	33	12,433

EXPORT PRICES AND EXPORT PRICE INDEX.

The following table shows the course of prices of seven of the more important Australian export commodities. The quotations are for units of standard grade, and hence do not reflect variations in the grades or qualities of the goods actually exported in each month. Index-numbers of the average level of export prices are included. They are compiled from the prices of 20 commodities, which constitute at present about 85 per cent. of all exports.

Monthly Weighted Averages.	Export Parities—Australian Currency.							General Export Price Index.	
	Wool (Grease Merino, standard).	Wheat (shippers' mixts).	Butter (choicest sales).	Sugar (95% pot.).	Lees (crops and finds).	Lamb (average of three qualities).	Lead.	Excluding Gold.	Including Gold.
	d. per lb.	d. per bus.	sh. per cwt.	£ per ton.	d. per lb.	d. per lb.	£ per ton.	1925-29 = 1,000.	
1928-29	16.58	55.49	159.6	11.99	4.60	7.20	21.01	1,050	1,000
1929-30	10.75	57.10	143.1	10.32	4.05	6.59	19.98	812	817
1930-31	8.95	29.06	121.0	8.55	3.33	6.00	15.61	608	620
1931-32	8.45	34.92	117.9	10.41	3.22	6.59	14.65	593	612
1932-33	8.38	33.75	92.8	9.65	2.68	4.34	12.72	579	601
1933-34	14.59	33.00	80.7	8.81	2.59	6.26	15.07	796	764
1934-35	9.45	34.94	81.7	8.25	3.05	6.27	12.40	615	642
1935-36	13.36	41.81	105.6	8.65	3.13	7.13	18.94	782	806
1936-37	16.39	60.00	112.5	8.65	3.47	6.94	27.27	959	975
1938-37—									
July	13.5	47.85	126.0	8.19	3.11	6.52	18.42	811	853
August	(15.5)	55.22	132.0	8.25	3.65	6.43	19.52	851	863
September ..	13.1	55.64	120.0	8.13	3.13	6.59	20.95	835	856
October	14.0	58.44	111.0	8.38	3.16	6.59	21.61	868	888
November ..	16.2	56.87	120.0	8.72	3.10	7.43	25.28	950	967
December ..	16.6	62.98	108.0	8.92	3.19	7.18	30.27	980	997
January	18.0	61.01	103.0	10.13	3.22	6.79	32.46	1,023	1,037
February ..	17.2	59.80	94.0	10.27	3.65	6.86	33.80	997	1,012
March	17.8	64.06	107.0	10.81	3.70	6.51	39.66	1,057	1,070
April	18.6	64.39	116.0	10.73	3.81	6.51	30.85	1,071	1,083
May	18.3	62.56	118.0	11.04	4.26	6.54	28.36	1,052	1,064
June	17.2	59.87	120.0	9.86	4.26	6.99	26.58	1,010	1,025
1937-38—									
July	(17.0)	64.44	126.0	9.87	3.67	7.00	27.80	1,022	1,036
August	17.2	60.18	130.0	9.69	3.63	7.19	26.70	1,015	1,029
September ..	15.4	59.31	134.0	9.64	3.70	7.56	23.90	957	973
October	14.2	59.66	158.0	9.55	3.65	7.69	21.50	932	950
November ..	12.6	53.98	147.0	9.04	3.65	7.82

EXPORT PRICE INDEX (CHANGING BASE).

In computing the monthly index-numbers given on the previous page, the prices are multiplied by the average quantities exported during a fairly recent and representative period. Hence, while they indicate satisfactorily the general trend of the market, they take no account of the relative quantities actually sold at the different prices ruling during each month. In consequence the index-numbers do not give an adequate indication of the significance of the price movements as they actually affected current sales. This is shown more accurately by the index-numbers in the following table, in the computation of which the "quantity-multipliers" are changed each month. The index-numbers are designed solely for comparisons of current prices with those of the corresponding months, or periods of months, of the preceding year.

Base: Weighted Average Price Level in corresponding months of preceding year = 1,000.

Month.	Month stated compared with same month of preceding year.	Period of trade year ending in month stated compared with same period of preceding year.
1936-37—		
July	1,152	1,152
August	1,175	1,162
September	1,102	1,136
October	1,078	1,114
November	1,187	1,137
December	1,229	1,159
January	1,242	1,170
February	1,231	1,170
March	1,260	1,182
April	1,268	1,198
May	1,243	1,202
June	1,258	1,205
1937-38—		
July	1,236	1,236
August	1,159	1,200
September	1,137	1,174
October	1,064	1,137

WHOLESALE PRICE INDEX.

BASIC MATERIALS AND FOODSTUFFS.

This new index is intended to replace the old Melbourne Index of General Wholesale Prices. Its construction has been made possible by the collection of new data on prices and consumption. Both the contents and the method of computation have been altered. The price quotations have in the main been obtained directly from manufacturers and dealers, and, with a few important exceptions, from Melbourne sources. Apart from home-produced building materials, coal and one or two minor commodities, however, the price movements may be taken as representative of fluctuations in wholesale prices in most Australian markets. The weighting system adopted is based on average annual consumption during the years 1928-29 to 1934-35 inclusive. Further particulars will be issued shortly in a separate statement.

(Base: 1928-29 = 1,000.)

Period.	Metals and Coal.	Oil, Fats and Waxes.	Textiles.	Chemicals.	Rubber and Hides.	Building Materials. (a)	Foodstuffs and Tobacco.	Goods principally imported.	Goods principally Home Produced.	All Groups.
1928-29 ..	1,000	1,000	1,000	1,000	1,000	1,000	1,000	1,000	1,000	1,000
1929-30 ..	992	1,048	769	953	753	992	1,027	1,031	995	1,004
1930-31 ..	917	1,103	619	965	634	1,012	849	1,078	832	898
1931-32 ..	852	1,066	594	984	642	1,004	801	1,093	779	857
1932-33 ..	823	1,022	586	976	504	1,000	745	1,056	732	815
1933-34 ..	808	794	792	917	697	991	788	977	755	811
1934-35 ..	766	842	609	840	674	981	815	1,009	749	814
1935-36 ..	725	895	774	816	765	981	857	1,037	776	840
1936-37 ..	758	925	920	814	963	1,044	910	1,088	838	892
1936-37—										
July ..	723	902	783	814	780	985	931	1,048	826	881
August ..	724	903	787	814	793	991	973	1,044	860	904
September ..	726	906	773	814	778	992	949	1,049	850	891
October ...	726	904	808	814	835	1,001	920	1,050	823	879
November..	731	908	911	814	880	1,002	913	1,059	825	881
December..	734	913	934	814	947	1,002	896	1,069	811	874
January ..	784	921	1,002	814	1,018	1,029	892	1,076	827	883
February ..	786	918	971	814	1,056	1,044	869	1,085	819	877
March ..	805	959	995	815	1,184	1,085	857	1,137	827	905
April ..	792	958	1,049	815	1,183	1,119	886	1,150	824	904
May ..	786	956	1,040	815	1,084	1,139	895	1,149	827	905
June ..	784	955	986	815	1,014	1,137	910	1,138	837	911
1937-38—										
July ..	787	954	982	815	1,015	1,148	964	1,154	872	941
August ..	788	955	984	815	1,045	1,155	975	1,152	882	949
September ..	808	954	901	821	1,005	1,154	990	1,138	894	957
October ..	799	953	841	821	965	1,119	939	1,129	875	936

(a) Revised since first issue.

PRIMARY PRODUCTION PRICE INDEXES.

The annual index-numbers in the following table have been recomputed to the base 1928-29 = 1,000 from the revised series recently published in *Production Bulletin* No. 30. They are based in general on prices realized in the principal markets of the Commonwealth.

The monthly index-numbers (based on the nearest equivalent wholesale quotations) are intended progressively to forecast the point which the annual index-numbers will eventually reach, and to provide a preliminary figure for the latest full year pending the completion of the annual census of production. The preliminary index-numbers will be revised as each production census is completed.

(Base: 1928-29 = 1,000.)

Period.	Agriculture.	Pastoral.	Farmyard and Dairying.	Mining other than Gold.	Gold.	All Groups.
1928-29	1,000	1,000	1,000	1,000	1,000	1,000
1929-30	958	811	949	967	1,600	888
1930-31	649	639	759	913	1,000	690
1931-32	717	550	683	742	1,410	647
1932-33	679	538	610	686	1,718	618
1933-34	675	801	599	684	1,817	731
1934-35	749	596	646	689	2,002	674
1935-36	803	767	711	735	2,062	781
1936-37	(a) 980	891	731	807	2,647	(a) 897
1936-37—	(a)					(a)
July	834	819	719	721	2,018	812
August	926	868	722	732	2,011	862
September	952	833	730	747	2,008	852
October	983	825	731	748	2,063	865
November	999	881	733	783	2,068	897
December	1,049	876	734	825	2,060	914
January	1,017	944	733	853	2,060	936
February	959	903	733	847	2,066	908
March	1,018	933	733	949	2,069	939
April	1,026	952	731	854	2,053	941
May	1,010	943	731	819	2,044	929
June	982	923	737	868	2,043	912
1937-38—						
July	1,046	952	757	846	2,036	951
August	1,023	980	764	835	2,028	956
September	997	954	770	817	2,040	937
October	999	884	779	774	2,042	905
1st 4 months 1936-37	919	836	726	737	2,025	848
1st 4 months 1937-38	1,016	942	768	818	2,057	937

(a) Revised since first issue.

RETAIL PRICE AND WAGE-RATE INDEXES.

In the tables on this and the following page the index-numbers have been recomputed uniformly to the base 1928-29 = 1,000 in order to facilitate comparisons with other data. The absolute heights of the index-numbers differ, in consequence, from those published elsewhere.

(Base: 1928-29 = 1,000.)

Period.	Retail Price Indexes : Six Capital Cities.					Wage Rate Indexes : Six States.	
	Food and Groceries.	Rent of 4 and 5 roomed houses.	Food, &c. and Rent (B Series).	Clothing and Miscellaneous.	Food, Rent, Clothing and Miscellaneous (C Series).	Nominal Weekly Rates, Adult Males.	"Real" Wages, Adult Males. ^(a)
1928-29	1,000	1,000	1,000	1,000	1,000	1,000	1,000
1929-30	1,001	1,006	1,003	989	997	1,004	1,007
1930-31	869	912	885	932	903	942	1,043
1931-32	802	791	798	881	830	863	1,040
1932-33	753	754	753	858	794	813	1,024
1933-34	761	752	756	852	794	804	1,012
1934-35	786	770	780	848	807	815	1,010
1935-36	807	803	805	850	823	824	1,001
1936-37	834	838	836	862	846	844	998
1936-37—							
July	815	829	827	859	839	834	994
August	830						
September	832	835	837	859	845	843	998
October	833						
November	835	841	839	861	847	845	998
December	842						
January	845	848	841	870	851	854	1,004
February	836						
March	830	858	850	874	859
April	836						
May	834						
June	835						
1937-38—							
July	841						
August	840						
September	855						
October	858						

(a) Index of nominal weekly wage rates for adult males divided by "C" series index of retail prices.

RETAIL PRICES, HOURS AND BASIC WAGE RATES.

Particulars.	New South Wales.	Victoria.	Queensland.	South Australia.	Western Australia.	Tasmania.	Six Capitals or Six States.
1937: March Quarter—							
Retail Prices—"C" Series (a)	867	837	820	828	843	848	847
Nominal weekly wages (a) ..	851	827	880	793	879	827	845
"Real" weekly wages (a) ..	982	988	1,073	958	1,043	975	993
Average weekly hours ..	44.08	46.41	45.69	46.55	45.30	46.33	45.09
Federal metrop. basic wage ..	70/-	69/-	66/-	69/-	71/-	69/-	(b) 70/-
State metrop. basic wage ..	70/-	(i)	74/-	69/6	73.9	(i)	..
1937: June Quarter—							
Retail Prices—"C" Series (a)	867	846	817	837	859	855	851
Nominal weekly wages (a) ..	862	830	901	806	879	830	854
"Real" weekly wages (a) ..	994	981	1,103	963	1,025	971	1,004
Average weekly hours ..	44.07	46.40	45.68	46.55	45.28	46.32	45.08
Federal metrop. basic wage ..	(e) 72/-	69/-	(c) 68/-	69/-	71/-	69/-	70/-
State metrop. basic wage ..	71/6	(i)	78/-	69/6	73.9	(i)	..
1937: September Quarter—							
Retail Prices—"C" Series (a)	873	858	819	850	854	859	859
Nominal weekly wages (a) ..	} (h)	(h)	(h)	(h)	(h)	(h)	(h)
"Real" weekly wages (a) ..							
Average weekly hours ..							
Federal metrop. basic wage (d)	75/-	72/-	71/-	70/-	72/-	72/-	73/-
Federal metrop. basic wage (e)	75/-	73/-	70/-	71/-	73/-	73/-	73/-
State metrop. basic wage ..	71/6	(i)	78/-	69/6	74.11	(i)	..
1937: December Quarter—							
Federal metrop. basic wage (f)	78/-	76/-	73/-	73/-	75/-	75/-	75/-
Federal metrop. basic wage (g)	78/-	77/-	74/-	74/-	75/-	75/-	76/-
State metrop. basic wage ..	78/-	(i)	78/-	74/-	74.11	(i)	..

(a) Weighted average Six Capitals or Six States 1928-29 = 1,000. (b) Payable as from 1st March. (c) Payable as from 1st June. (d) Payable as from first pay-period in July. These rates are the rates based on the March quarter index-numbers plus the first instalments of the "prosperity loadings". (e) Payable as from 1st September. Rates based on June quarter index-numbers plus the first instalments of the "prosperity loadings". (f) Payable as from first pay-period in October. Rates based on June quarter index-numbers plus the full "prosperity loadings". (g) Payable as from 1st December. Rates based on September quarter index-numbers plus full "prosperity loadings". (h) Not yet available. (i) None declared, but Federal rates followed to a large extent.

SECURITY PRICE INDEXES: NEW SOUTH WALES.

The prices of ordinary shares are of special interest because of their sensitivity to anticipated changes in general business. They tend on the whole to fluctuate more rapidly and more widely than other indexes of business conditions.

In comparing movements in the three sets of index-numbers given below, attention should be paid to differences in the methods by which they have been constructed, and in the nature of the companies and the types of shares included in each index. These are outlined in the footnotes to the tables.

Period.	New South Wales: Ordinary Shares.(a)						
	23 Manufacturing and Distributing Companies.	10 Retail Companies.	8 Public Utility Companies.	5 Pastoral and Finance Companies.	5 Insurance Companies.	75 Companies (including 24 Miscel- laneous).	24 Active shares included in foregoing.
1928-29	1,060	1,000	1,000	1,000	1,000	1,000	1,000
1929-30	885	794	969	698	860	851	855
1930-31	518	428	744	425	607	528	552
1931-32	507	395	791	503	595	508	551
1932-33	680	506	1,024	618	711	640	698
1933-34	835	684	1,175	828	877	795	851
1934-35	951	836	1,351	794	1,068	910	956
1935-36	1,079	967	1,445	824	1,178	1,006	1,070
1936-37	1,208	1,110	1,419	926	1,269	1,091	1,163
1936-37—							
July	1,142	1,077	1,445	828	1,200	1,052	1,120
August	1,144	1,094	1,393	853	1,193	1,050	1,116
September	1,161	1,106	1,393	870	1,192	1,057	1,121
October	1,185	1,114	1,419	865	1,225	1,073	1,142
November	1,218	1,116	1,412	914	1,235	1,097	1,164
December	1,199	1,119	1,387	969	1,220	1,088	1,149
January	1,251	1,129	1,423	957	1,222	1,113	1,184
February	1,252	1,134	1,445	972	1,220	1,123	1,200
March	1,252	1,137	1,434	975	1,205	1,123	1,202
April	1,237	1,114	1,424	950	1,202	1,113	1,190
May	1,235	1,102	1,427	998	1,199	1,107	1,188
June	1,238	1,076	1,428	983	1,195	1,109	1,180
1937-38—							
July	1,260	1,104	1,437	974	1,189	1,111	1,191
August	1,276	1,100	1,464	968	1,190	1,119	1,201
September	1,250	1,093	1,474	960	1,180	1,104	1,174
October	1,251	1,066	1,467	926	1,146	1,035	1,153

(a) Compiled by the New South Wales Government Statistician. The index-numbers are based on the prices of the ordinary shares of companies (excluding banking companies) whose business is conducted wholly or largely in New South Wales. They represent unweighted averages of the mean monthly prices per £ of paid-up capital. Adjustments are made where capital is written off or bonus shares issued. Re-computed from original base, par values.

SECURITY PRICE INDEXES : MELBOURNE AND QUEENSLAND.

Period.	Melbourne Stock Exchange.(a)				Queensland : Ordinary Shares.(b)		
	32 Ordinary Shares.	15 Preference Shares.	9 Bank Shares.	4 Silverlead Shares.	12 Industrials.	12 Financial and Trading.	24 Total of foregoing.
1928-29	1,000	1,000	1,000	1,000	1,000	1,000	1,000
1929-30	841	963	859	906	897	948	922
1930-31	529	856	637	457	634	751	691
1931-32	565	926	594	600	654	700	676
1932-33	747	1,124	618	693	763	773	767
1933-34	895	1,235	692	908	913	884	899
1934-35	920	1,333	650	1,017	977	925	952
1935-36	1,098	1,277	702	1,342	1,038	935	982
1936-37	1,303	1,239	749	2,554	1,033	937	996
1936-37—					..		
July	1,227	1,250	715	1,720	1,037	935	987
August	1,221	1,243	705	1,774	1,038	939	990
September	1,240	1,240	706	1,853	1,041	927	986
October	1,287	1,241	721	2,012	1,027	917	973
November	1,323	1,250	741	2,356	1,041	928	966
December	1,301	1,238	735	2,681	1,034	918	977
January	1,330	1,237	757	3,002	1,044	927	987
February	1,358	1,243	779	3,098	1,049	943	997
March	1,375	1,254	795	3,430	1,076	952	1,016
April	1,337	1,233	791	3,025	1,084	950	1,019
May	1,330	1,217	779	2,883	1,083	957	1,022
June	1,316	1,219	755	2,862	1,061	946	1,015
1937-38—							
July	1,352	1,228	733	2,879	1,066	952	1,011
August	1,356	1,247	726	3,055	1,072	963	1,019
September	1,315	1,240	701	2,807	1,061	947	1,006
October	1,285	1,242	698	2,384	1,067	952	1,001

(a) Compiled by the Stock Exchange of Melbourne. The index-numbers of ordinary shares are based on the prices of the shares of companies whose business is more or less national in character. They represent averages (weighted by paid-up capital, with adjustments in the case of bank shares) of the mean monthly prices on the Melbourne Stock Exchange. The preference share index-numbers are based on the reciprocals of average yields. Recomputed from original base, May, 1926. (b) Compiled by the Queensland Bureau of Industry. The index-numbers are based on the prices of the ordinary shares of 21 representative Queensland companies, and the preference shares of three companies whose ordinary shares are inactive. The index-numbers represent unweighted averages. End-of-month values were used until December, 1930, and mean monthly values thereafter. Recomputed from original base, April, 1928.

BUILDING PERMITS: METROPOLITAN AND PROVINCIAL.

£'000.

Monthly Averages during—	Recorded Value of "All Building Operations" in—						
	Commonwealth.	New South Wales.			Victoria.		
	Maximum comparable total (excludes G, J and L).	Metropolis.	Country Municipalities.	7 Shires near Sydney.	Metropolis.	6 provincial Municipalities.	4 provincial Municipalities
	A.	B.	C.	D.	E.	F.	G.
1928-29 ..	2,742*	1,011	357	79	638	19	..
1929-30 ..	1,858*	587	304	38	463	16	..
1930-31 ..	555*	121	82	23	118	9	..
1931-32 ..	477	83	50	16	155	5	..
1932-33 ..	721	188	88	21	214	9	..
1933-34 ..	1,163	345	137	38	352	13	..
1934-35 ..	1,814	637	223	43	467	14	..
1935-36 ..	2,266	782	312	49	597	21	..
1936-37 ..	2,540	847	362	54	666	29	33
Quarters ended—							
1935-36—							
September ..	2,367	842	294	54	596	17	..
December ..	2,093	653	319	51	549	16	..
March ..	2,214	818	306	48	594	22	36
June ..	2,470	812	329	45	643	30	31
1936-37—							
September ..	2,684	946	377	73	673	31	41
December ..	2,404	799	326	52	557	24	28
March ..	2,102	650	336	40	553	30	32
June ..	2,968	995	407	52	881	31	31
1937-38—							
September ..	3,666	1,026	410	92	648	55	45
Months of—							
1937-38—							
July	997	685
August	1,049	618
September	1,033	638

NOTES.

A. This column is the total of all series available continuously since 1928-29 for which information is at present collected at least quarterly. Columns G above and J on the next page are omitted as the information is not available for the earlier years, and column L on the next page is omitted because quarterly figures are not available.

F. Includes the Cities of Geelong West, Mildara and Warrnambool and the Towns of Horsham, Newtown and Chilwell, and Sale.

G. Includes the Cities of Ballarat, Bendigo, and Geelong and Shepparton Borough.

* Exclusive of City of Sydney, estimates for which are at present being compiled.

BUILDING PERMITS: METROPOLITAN AND PROVINCIAL—continued.

£'000.

Monthly Averages during—	Recorded Value of "All Building Operations" in—						
	Queensland			South Australia.		Western Australia.	Tasmania.
	Metropolis.	11 Provincial Cities.	10 Provincial Towns.	Metropolis.	Country Municipalities.	Metropolis.	Metropolis.
	H.	I.	J.	K.	L.	M.	N.
1928-29 ..	203	61	..	151	34	210	13
1929-30 ..	118	53	..	96	29	153	8
1930-31 ..	92	23	..	26	11	33	8
1931-32 ..	73	22	..	18	10	50	5
1932-33 ..	66	33	..	33	18	61	8
1933-34 ..	88	45	..	51	25	82	14
1934-35 ..	138	66	..	97	23	112	17
1935-36 ..	186	74	23	103	34	135	27
1936-37 ..	175	83	25	118	33	168	38
Quarters ended—							
1935-36—							
September ..	191	73	15	101	..	168	31
December ..	178	80	39	120	..	111	14
March ..	137	62	15	84	..	126	17
June ..	239	79	24	108	..	134	46
1936-37—							
September ..	151	80	27	104	..	200	49
December ..	211	87	38	114	..	186	48
March ..	129	79	20	122	..	134	27
June ..	208	84	16	131	..	153	26
1937-38—							
September ..	214	121	37	199	..	201	40
Months of—							
1937-38—							
July ..	247	167	38	269	..	183	27
August ..	237	115	31	202	..	239	43
September ..	159	83	44	126	..	163	52

NOTES.

I. The Cities included are Bundaberg, Cairns, Charters Towers, Gympie, Ipswich, Mackay, Maryborough, Rockhampton, Townsville, and Warwick.

J. The Towns included are Bowen, Charleville, Dalby, Gladstone, Innisfail, Longreach, Redcliffe, Roma, Southport, and Stanthorpe.

L. The figures relate to financial years as follows:—For Corporations, years ended 30th November up to and including 1934, seven months ended 30th June, 1935, and years ended 30th June, thereafter. For District Councils, years ended 30th June.

BUILDING PERMITS: SIX CAPITAL CITIES AND SUBURBS.(a)

Monthly Averages.	New Dwellings.		Other New Buildings.		Total New Buildings.		Alterations and Additions.	All Building Operations.
	Number.	Value.	Number.	Value.	Number.	Value.	Value.	Value.
1928-29(b) ..	1,587	£'000. 1,493	439	£'000. 416	2,026	£'000. 1,909	£'000. 317	£'000. 2,226
1929-30(b) ..	980	921	419	258	1,399	1,179	248	1,427
1930-31(b) ..	202	166	248	129	450	295	103	398
1931-32 ..	169	128	203	154	372	282	162	384
1932-33 ..	291	266	222	125	513	390	180	570
1933-34 ..	499	509	109	183	608	692	240	932
1934-35 ..	763	800	139	320	902	1,120	348	1,468
1935-36 ..	1,025	1,028	165	429	1,190	1,457	374	1,831
1936-37 ..	1,132	1,109	157	490	1,289	1,599	414	2,013
1936-37—								
July ..	1,379	1,333	176	445	1,555	1,778	477	2,255
August ..	1,192	1,074	172	584	1,364	1,658	402	2,060
September ..	1,318	1,367	193	311	1,511	1,678	381	2,059
October ..	1,146	1,058	175	593	1,321	1,651	448	2,099
November ..	1,042	1,089	154	453	1,196	1,542	385	1,927
December ..	811	851	119	482	930	1,333	324	1,657
January ..	1,013	952	134	474	1,147	1,426	314	1,740
February ..	989	891	115	225	1,104	1,118	355	1,471
March ..	1,053	961	133	336	1,186	1,297	407	1,704
April ..	1,174	1,253	174	603	1,348	1,856	466	2,322
May ..	1,153	1,191	167	632	1,320	1,823	510	2,333
June ..	1,308	1,292	177	741	1,485	2,033	497	2,530
1937-38—								
July ..	1,337	1,272	156	772	1,493	2,044	367	2,411
August ..	1,527	1,526	147	493	1,674	2,019	389	2,468
September ..	1,405	1,364	165	370	1,570	1,734	437	2,171

(a) Includes Government buildings in Brisbane and Suburbs, and those erected by contract in Hobart and Suburbs.
 (b) Exclusive of City of Sydney, figures for which are not yet available.

MISCELLANEOUS INDEXES OF PRODUCTIVE ACTIVITY.

The following table gives particulars of the physical quantity of production of certain items which are at present available on a monthly basis. Efforts are being made to extend the field of monthly production statistics.

Monthly Averages.	Metals.				Butter.	Electricity and Gas.	
	Pig Iron : Index of Production. (a)	Input Steel : Index of Production. (a)	Zinc, refined : Index of Production.	Gold Produced.	Factory Production.	Melbourne : Energy supplied for all purposes except traction. (b)	Sydney : Index of Sales of Gas and Electricity.
	1928-29 = 1,000.	1928-29 = 1,000.	1928-29 = 1,000.	Fine oz.	100 lb.	Millions of K.W.H.	(c)
1928-29.. ..	1,000	1,000	1,000	56,738	22,706
1929-30.. ..	669	728	946	36,729	23,576	..	1,036
1930-31.. ..	505	528	856	42,465	27,752	..	971
1931-32.. ..	412	512	825	55,685	30,889	28.0	951
1932-33.. ..	729	907	839	64,034	33,222	30.9	972
1933-34.. ..	1,057	1,198	831	72,680	35,753	33.9	1,001
1934-35.. ..	1,515	1,610	915	70,381	37,247	37.9	1,046
1935-36.. ..	1,699	1,876	1,110	88,254	34,232	40.9	1,107
1936-37.. ..	1,974	2,420	(d)1,689	107,571	(f)31,682	44.0	1,152
1936-37—			(d)		(f)		
July	2,029	2,192	1,103	106,222	17,353	47.5	1,117
August	2,024	2,259	1,096	101,355	22,540	46.2	1,074
September	2,076	2,419	1,103	103,397	30,440	41.6	1,134
October	1,914	2,338	1,095	106,275	39,116	44.0	1,127
November	1,755	2,254	1,089	102,559	38,121	41.5	1,159
December	1,970	2,233	1,085	123,912	37,134	39.7	1,164
January	2,055	2,409	1,081	(e)93,136	42,006	39.2	1,145
February	1,962	2,589	1,084	108,968	35,997	39.2	1,134
March	1,987	2,541	1,082	104,433	37,319	42.0	1,152
April	1,935	2,562	1,080	109,926	30,891	46.3	1,192
May	1,993	2,793	1,085	114,854	25,367	50.2	1,167
June	1,959	2,568	1,090	115,377	17,660	50.2	1,242
1937-38—							
July	1,914	2,451	1,088	113,292	17,565	55.9	1,219
August	2,024	2,616	1,080	116,303	21,728	48.4	1,202
September	1,925	2,333	1,083	110,797	29,650	47.1	1,184
October	(j)1,804	(j)2,463	1,077	113,831	..	47.9	1,194

(a) Revised series, now based throughout on total production. (b) Includes all central generating stations. (c) The base for each month is the average sales in the corresponding months of the three years 1929 to 1931; i.e. seasonal variations are removed. Based on units of 3,412 B.T.U. (d) Based on total production up to 1935-36. The annual and monthly figures thereafter have been estimated on the basis of production by the Electrolytic Zinc Company Ltd. (e) Subject to revision during last ten months. (f) Subject to revision.

AND STATE RAILWAYS : FREIGHT, PASSENGERS AND REVENUE.

The following table shows statistics of freight and passengers carried and of revenue earned on the five Mainland State Railways.

The daily average number of passenger journeys is obtained by dividing the monthly totals by the total number of days in the month.

Period.	Freight Carried.		Passenger Journeys Daily Average.	Gross Monthly Revenue.	Net Monthly Revenue.
	Net Ton Miles Daily Average.	Average haul per ton.			
	1000.	Miles.	1000.	£'000.	£'000.
1928-29	12,205	115.0	1,913	3,947	812
1929-30	11,265	116.4	990	3,641	539
1930-31	10,589	127.3	851	3,087	515
1931-32	10,668	131.3	823	2,974	682
1932-33	10,973	131.8	858	3,068	775
1933-34	10,384	125.8	891	2,932	748
1934-35	11,432	124.0	939	3,165	843
1935-36	11,885	125.2	999	3,248	855
1936-37	12,782	125.9	1,028	3,395	884
1936-37—					
July	10,779	116.6	981	3,081	659
August	11,843	120.0	1,030	3,295	913
September	12,072	118.8	1,028	3,450	1,055
October	11,677	114.4	1,068	3,347	1,069
November	12,748	120.5	1,061	3,374	843
December	13,485	134.1	992	3,617	1,126
January	14,067	136.2	995	3,505	1,162
February	14,105	135.5	1,049	3,146	813
March	13,177	128.6	1,069	3,370	1,134
April	14,311	130.2	1,019	3,537	1,069
May	13,509	133.7	1,074	3,425	775
June	12,189	122.1	1,050	3,156	—72
1937-38—					
July	12,085	119.7	1,024	3,343	837
August	12,217	116.5	1,032	3,435	860

MAINLAND RAILWAYS : FREIGHT TONNAGES CARRIED.

The following table shows statistics of freight tonnages carried by the Mainland State and Commonwealth Railways.

The daily averages for freight tonnages are obtained by dividing monthly tonnages by the number of days in the month, excluding Sundays, Xmas Day and Good Friday.

Freight totals are obtained by adding together the total freight tonnages carried on the Commonwealth State Railways and deducting the sum of the interstate tonnages carried in New South Wales and South Australia. This avoids double-counting except to a negligible extent.

Period.	Total Tonnage Carried.		Coal and Coke.	Other Minerals.	Wheat.	Other Grain and Flour.	Wool.	Live-stock.	Fruit.	All Other.
	Index 1933-34 = 100.	Tons.								
	1934-35 ..	100								
1934-35 ..	112	92,825	23,970	9,410	11,679	4,951	1,239	6,188	1,688	33,710
1935-36 ..	115	95,527	25,474	9,498	11,416	4,498	1,164	6,477	1,629	35,369
1936-37 ..	121	100,114	27,528	9,680	10,944	4,307	1,224	6,950	1,593	37,907
1936-37—										
July ..	110	91,600	29,764	9,151	5,976	4,434	525	5,098	1,254	35,400
August ..	117	96,821	27,096	9,349	6,631	4,378	1,634	5,813	1,350	40,370
September ..	121	100,290	27,537	9,339	5,452	3,674	3,367	6,589	1,363	42,949
October ..	121	100,669	26,155	9,127	4,346	3,651	3,316	8,850	1,183	44,041
November ..	126	104,516	28,265	10,591	5,560	4,156	2,058	9,270	1,166	43,271
December ..	115	95,782	25,234	8,276	16,153	5,314	619	7,022	1,176	31,988
January ..	123	102,413	25,655	8,902	27,441	4,434	249	6,733	1,300	27,681
February ..	124	102,741	26,968	9,006	19,593	4,449	408	8,072	2,107	33,139
March ..	121	100,856	27,690	8,962	10,640	4,696	574	6,745	2,837	39,312
April ..	131	108,444	28,495	10,974	9,654	4,547	754	7,181	2,610	44,229
May ..	120	100,044	26,880	11,170	12,070	4,116	590	6,764	1,558	36,896
June ..	118	98,067	31,537	11,139	8,722	3,884	314	6,102	1,258	35,312
1937-38—										
July ..	120	99,793	30,206	11,477	6,499	4,504	736	5,901	1,288	39,182
August ..	124	103,320	30,475	11,217	4,444	5,784	2,106	6,542	1,098	43,654
September ..	131	108,375	30,506	12,830	4,041	4,143	3,456	7,693	1,163	44,549

INTERSTATE SHIPPING CARGOES.

Monthly Averages.	Tons (weight and measurement combined) Shipped from—						
	New South Wales.	Victoria.	Queensland.	South Australia.	Western Australia.	Tasmania.	Total Australia.
	'000.	'000.	'000.	'000.	'000.	'000.	'000.
1923-29 ..	210	60	33	104	8	48	463
1929-30 ..	150	58	45	81	8	59	581
1930-31 ..	169	47	28	60	3	55	342
1931-32 ..	164	49	26	56	3	36	334
1932-33 ..	191	58	30	84	4	39	406
1933-34 ..	205	66	31	103	6	45	456
1934-35 ..	231	74	32	150	7	55	549
1935-36 ..	250	80	37	151	7	62	587
1936-37 ..	284	92	39	184	8	68	675
1936-37—							
July ..	306	88	34	180	10	71	689
August ..	285	75	55	171	5	56	647
September ..	260	93	64	177	7	60	661
October ..	294	106	67	194	9	68	738
November ..	270	97	47	172	16	55	657
December ..	288	85	33	187	9	52	654
January ..	241	82	31	199	7	61	621
February ..	255	82	23	178	4	57	599
March ..	273	96	21	188	10	83	671
April ..	328	105	22	197	7	94	733
May ..	292	92	28	181	8	78	679
June ..	316	101	42	183	5	82	729
1937-38—							
July ..	327	114	47	193	7	80	768
August ..	294	95	43	217	9	72	730
September ..	310	96	68	201	6	67	748

OVERSEA SHIPPING CARGOES.

Monthly Averages.	Discharged.			Shipped.		
	Tons Weight.	Tons Measure.	Total (Tons W and M).	Tons Weight.	Tons Measure.	Total (Tons W and M).
	'000.	'000.	'000.	'000.	'000.	'000.
1928-29	300	206	506	378	63	441
1929-30	362	192	554	329	54	383
1930-31	198	87	285	484	53	537
1931-32	173	74	247	496	61	557
1932-33	223	102	325	470	65	535
1933-34	217	116	333	355	61	416
1934-35	248	145	391	435	72	507
1935-36	295	162	457	434	75	509
1936-37	304	169	473	419	78	497
1936-37—						
July	337	157	494	319	55	374
August	294	155	449	363	52	415
September	263	165	428	420	67	487
October	378	177	555	453	74	527
November	307	222	529	378	60	438
December	345	159	504	453	55	508
January	351	162	513	466	66	532
February	212	112	324	456	56	512
March	312	185	497	443	130	573
April	264	194	458	387	153	540
May	278	161	439	487	91	578
June	315	175	490	403	74	477
1937-38—						
July	328	211	539	385	85	470
August	301	192	493	338	83	421
September	366	169	535	355	60	395

WHOLESALE TRADE.

Some indication of fluctuations in the value of wholesale trade is given by the returns made under the Sales Tax Acts, but care must be exercised in interpreting the figures. The returns do not relate to all wholesale trade, nor do they cover a constant proportion of all trade. The effects of legislative and administrative changes on the recorded values of taxable and exempt goods respectively are somewhat uncertain, although total recorded sales are affected in smaller degree by such changes. Insufficient information is available to enable adjustments to be made to the crude figures on this account. Except where such changes are indicated, the "preliminary" figures are fairly comparable with one another, but they are not directly comparable with the "final" figures.

An index of activity in New South Wales is afforded by monthly returns of the sales of 42 large factories.

Monthly Averages.	Commonwealth.			New South Wales.
	Net Sales Recorded under Sales Tax Acts.(a)			Value of Sales of 42 large factories.
	Taxable Goods.	Exempt Goods.	Taxable and Exempt Goods.	
£'000. (b)	£'000. (b)	£'000. (b)	£'000.	
1930-31	14,705	16,069	30,774	2,065
1931-32 (d)	12,632	15,873	28,505	1,999
1932-33 (d)	13,071	16,075	29,146	2,098
1933-34 (d)	13,442	16,334	29,776	2,248
1934-35 (d)	14,392	17,272	31,664	2,427
1935-36 (d)	16,007	18,632	34,639	2,661
1936-37 (d)	2,912
1936-37—	(c)	(c)	(c)	
July	13,645	18,199	31,844	2,827
August	14,799	17,259	32,058	2,655
September (d)	16,102	19,642	35,744	2,761
October	14,785	19,332	34,117	2,985
November	14,824	22,418	37,242	3,022
December	13,465	20,342	33,807	3,070
January	11,951	19,976	31,927	2,616
February	12,865	20,099	32,964	2,853
March	15,163	23,364	38,527	3,147
April	14,768	23,258	40,026	3,166
May	13,931	22,838	36,769	2,938
June	13,310	21,236	34,546	2,958
1937-38—				
July	13,414	22,014	35,428	3,064
August	14,313	21,896	36,203	3,025
September	3,231

(a) The Act came into operation on 18th August, 1930, the rate of tax being 2½ per cent. It was raised to 6 per cent. on 11th July, 1931, reduced to 3 per cent. on 26th October, 1933, and to 4 per cent. on 11th September, 1936. With certain specified exemptions, all goods sold in Australia, including imports, are taxable. (b) "Final" figures. (c) "Preliminary" figures. (d) The list of exemptions was extended as from 11th July, 1931; 2nd September, 1932; 11th November, 1932; 27th October, 1933; 1st August, 1934; 13th December, 1934; 25th October, 1935; and 26th September, 1936.

RETAIL TRADE.

Statistics of retail sales are collected only in two States. In New South Wales the Retail Traders' Association Research Bureau, in co-operation with the Commonwealth Bank, collects returns from a number of large Sydney stores. In Queensland returns are collected by the Bureau of Industry from twelve large department stores in Brisbane and their branches in country towns. Because of the relatively rapid development of chain store business, it is uncertain to what extent the department store figures are representative of all retail trade.

VALUE OF RETAIL SALES: PERCENTAGE CHANGE ON PREVIOUS YEAR.

Period.	Sydney.					Queensland.				
	Average of 3 months ended—				Year.	Average of 3 months ended—				Year.
	September.	December.	March.	June.		September.	December.	March.	June.	
1928-29	-1.9	+2.6	+2.1	+3.6	+2.6
1929-30	-4.1	-0.2	-4.4	-7.3	-2.0
1930-31	-15.4	-10.9	-15.7	-17.4	-14.7
1931-32	-7.3	-7.0	-2.2	+1.3	-4.0
1932-33 ..	+12.4	+3.8	-0.6	-1.6	+3.5	-0.5	-2.2	-4.2	-0.1	-1.7
1933-34 ..	-1.8	+3.3	+3.3	+7.7	+3.2	-4.3	+1.8	+5.7	+7.3	+2.6
1934-35 ..	-9.8	+6.3	+3.2	+7.1	+6.6	+4.8	+3.3	+2.8	+1.1	+2.9
1935-36 ..	-5.0	+8.3	+7.6	+6.5	+6.9	-1.3	+1.0	-0.7	-1.2	-0.5
1936-37 ..	+6.5	+4.6	+4.5	+5.7	+5.3	-0.8	-2.6	-3.0	-1.3	-1.5
1937-38 ..	+8.1	-1.4
	Month of—		Average of 3 months ended—			Month of—		Average of 3 months ended—		
1930-37—										
July ..	+11.6		+8.1			-0.1		-0.5		
August ..	-2.3		+8.3			+2.6		-0.9		
September	+9.1		+6.5			+0.1		+0.8		
October ..	+6.9		+4.5			-0.8		+0.6		
November	-3.7		+3.7			-3.6		-1.5		
December	+9.2		+4.6			-3.1		-2.6		
January ..	+1.8		-3.2			-2.1		-3.0		
February	+3.4		+5.5			-3.9		-3.0		
March ..	+8.2		+4.5			-3.1		-3.0		
April ..	+8.1		+6.6			-5.2		-4.1		
May ..	+2.0		-5.9			-1.0		-3.0		
June ..	+7.4		+5.7			+2.0		-1.3		
1937-38—										
July ..	+5.3		+4.8			+1.5		+0.8		
August ..	+10.5		+7.5			+0.8		+1.5		
September	+9.6		+8.1			+1.8		+1.4		

AUSTRALIAN TRADING BANKS.(a)

£A600.

Quarter.	Business within Australia.							£A600 London Funds. (c)	Total Cash + Treasury Bills + London Funds.
	Deposits.			Advances.	Government and Municipal Securities. (b)	Cash.	Treasury Bills.		
	Bearing Interest.	Not Bearing Interest.	Total.						
1928—3rd	164,172	102,707	266,879	228,199	17,161	49,378	..	29,197	78,575
1929—..	177,669	99,486	277,155	259,198	14,643	45,542	..	17,577	61,119
1930—..	177,477	82,360	259,837	255,045	11,795	55,448	2,374	19,225	57,047
1931—..	177,009	77,541	254,550	238,331	9,691	44,969	15,891	19,786	78,646
1932—..	185,182	81,888	267,070	229,491	9,917	40,709	34,559	19,120	94,388
1933—..	182,439	85,370	267,809	235,269	16,884	40,001	29,201	20,120	89,322
1934—..	192,263	97,078	289,341	240,948	20,269	51,483	25,573	23,088	100,084
1935—..	180,382	102,016	282,398	256,601	22,585	34,374	22,515	18,036	747,925
1936—..	180,311	102,541	282,852	264,942	14,827	29,910	23,686	21,595	75,191
1936—4th	179,810	109,988	289,798	265,850	14,034	31,106	23,234	26,619	80,959
1937—1st	186,015	119,794	305,809	259,457	14,634	37,430	26,059	(d)	(d)
2nd	192,756	119,196	311,952	259,711	17,155	38,551	25,088	(d)	(d)
3rd	192,316	114,754	307,070	264,127	19,713	36,889	22,530	(d)	(d)

Quarter.	Percentages of various categories of assets to total deposits.					Percentage Non-interest- bearing to Total Deposits.
	Cash in Australia.	Cash + Treasury Bills.	Cash + Treasury Bills + London Funds.	Advances	Advances + Government and Municipal Securities in Australia. (b)	
1928—3rd	18.50	18.50	29.44	85.51	91.91	38.48
1929—..	15.71	15.71	22.05	93.52	98.80	35.90
1930—..	13.64	14.56	21.95	98.16	102.69	31.70
1931—..	17.67	23.12	30.90	93.63	97.44	30.46
1932—..	15.24	28.18	35.34	85.93	89.64	30.66
1933—..	14.94	25.84	33.25	87.85	94.15	31.88
1934—..	17.79	26.61	34.59	83.28	90.28	33.55
1935—..	12.17	20.14	26.53	90.86	98.86	36.12
1936—..	10.57	18.95	26.58	93.67	98.94	36.25
1936—4th	10.73	18.75	27.94	91.75	96.59	37.95
1937—1st	12.24	20.75	(d)	84.83	95.62	39.18
2nd	12.29	20.34	(d)	83.26	88.75	58.20
3rd	12.01	19.35	(d)	86.02	92.44	37.57

(a) Nine trading banks, including banks subsequently amalgamated with any of the present nine. (b) Excluding Treasury Bills. (c) Excluding Australian Government Securities. (d) Not yet available.

COMMONWEALTH BANK OF AUSTRALIA.

£A000.

Quarter.	General Banking Department.							Note Issue and General Banking Department.		Notes held outside Commonwealth Bank.	
	Business within Australia.							Sterling Reserve and Short Call Money in London.	Net London Funds. (c)		
	Deposits.			Advances and Short Term Loans.			Government and Municipal Securities.				
	Bearing Interest.	Not Bearing Interest.	Total.	Balances Due to Other Banks.	Advances, &c.	Short term Loans.					Total.
1928—3rd...	8,834	20,395	29,229	9,732	(a)	(a)	15,041	13,778	41,473	22,542	39,671
1929—"	11,000	17,097	28,097	7,509	(a)	(a)	15,757	16,931	32,363	11,634	37,671
1930—"	13,452	11,605	25,057	15,656	(a)	(a)	12,549	24,093	26,385	6,346	37,877
1931—"	16,682	8,796	25,478	22,961	13,265	15,748	29,013	17,900	23,895	4,575	47,484
1932—"	27,224	5,807	33,031	21,878	(b)7,301	10,382	17,683	29,747	29,907	15,400	43,138
1933—"	32,601	6,280	38,281	22,612	6,486	10,207	16,693	36,662	30,347	37,360	41,704
1934—"	39,954	10,390	41,354	36,559	6,842	10,443	17,285	36,506	33,666	50,576	40,573
1935—"	31,277	10,291	41,598	20,536	7,900	7,218	15,118	36,590	41,667	27,503	41,488
1936—"	32,858	14,363	47,221	16,767	9,727	5,799	15,526	36,619	35,238	29,651	41,685
1936—4th	34,284	16,436	50,720	17,738	9,879	8,979	18,858	36,381	37,070	29,100	43,421
1937—1st	33,895	14,977	48,872	23,695	11,135	9,520	20,655	38,258	37,440	(d)	43,256
2nd	37,635	16,535	54,170	24,459	11,312	5,038	16,330	38,589	47,499	(d)	42,982
3rd	41,375	15,244	56,619	23,094	12,029	3,912	15,941	38,359	49,643	(d)	43,246

(a) Not available. (b) This fall in balances was due to a change of system by which credit balances allowed as "set-offs" are deducted from gross advances. (c) Last Monday in quarter. (d) Not yet available.

ALL CHEQUE-PAYING BANKS.

(Including Commonwealth Bank.)

Quarter.	Deposits.			Advances.	Government and Municipal Securities. (including Treasury Bills).	Percentage Non-interest-bearing to Total Deposits. (b)	Percentage Advances to Total Deposits. (b)
	Bearing Interest. (a)	Not Bearing Interest.	Total.				
	£'000.	£'000.	£'000.	£'000.	£'000.	%	%
1928—3rd	186,859	125,808	312,667	263,588	37,641	40.7	82.6
1929—"	204,201	119,201	323,402	295,576	39,415	37.3	90.2
1930—"	206,656	96,171	304,827	291,581	44,455	32.3	94.4
1931—"	211,207	68,529	299,736	275,468	62,725	30.2	90.3
1932—"	218,279	88,611	306,890	257,589	88,974	28.9	79.4
1933—"	220,127	92,514	312,641	262,347	98,390	29.6	79.5
1934—"	229,164	108,343	337,507	267,938	98,851	32.1	75.4
1935—"	218,132	113,664	331,796	285,471	95,093	34.2	81.9
1936—"	219,546	118,414	337,960	296,113	86,844	35.0	85.5
1936—4th	220,758	128,134	348,872	297,517	88,132	36.7	81.3
1937—1st	226,488	136,732	363,220	293,788	93,224	37.6	77.1
2nd	236,768	137,922	374,710	294,274	69,651	36.7	74.6
3rd	240,088	131,814	371,902	298,829	88,813	35.4	76.4

(a) Includes Inscribed Deposit Stock of E.S. and A. and Queensland National Banks. (b) In computing the ratios the figures relating to the Rural Bank of New South Wales have been excluded.

BANK CLEARINGS.

In the absence of statistics of debits to customers' accounts, bank clearings form a useful index of the money-value of cheque payments. Since they do not include cheques deposited in the banks on which they are drawn, the figures are not exhaustive, and their comparability is sometimes impaired by the effects of banking amalgamations. Cheque clearings connected with the redemption or issue of Treasury Bills have been excluded from the following table, but adjustments have not been made for other sporadic transactions concerned with public finance.

£'000.

Weekly Averages.	Sydney.	Melbourne.	Brisbane.	Adelaide.	Perth.	Hobart.	Six Capitals.
1928-29	20,064	15,408	3,777	3,093	2,188	542	45,072
1929-30	18,684	14,662	3,566	2,747	1,994	490	42,143
1930-31	15,191	11,768	2,966	2,019	1,447	381	33,772
1931-32	11,095	10,807	2,686	1,919	1,426	357	28,290
1932-33	11,876	11,577	2,747	2,080	1,422	378	30,080
1933-34	13,362	12,723	2,992	2,214	1,575	411	33,277
1934-35	13,919	13,094	3,385	2,386	1,715	426	34,835
1935-36	15,522	14,208	3,528	2,592	1,866	507	38,223
1936-37	17,247	15,592	3,753	2,900	1,989	559	42,040
1926-37—							
July	15,014	15,225	3,842	2,512	1,882	624	39,099
August	14,293	12,789	3,506	2,361	1,777	441	35,167
September	15,368	12,281	3,959	2,538	1,784	442	36,372
October	16,969	16,278	3,940	2,934	1,949	567	42,637
November	19,010	16,681	3,680	2,908	2,140	491	44,910
December	18,265	16,346	3,753	2,883	2,298	513	44,058
January	17,018	15,010	3,325	2,734	1,986	442	40,515
February	19,495	16,321	3,478	3,004	2,213	775	45,282
March	17,060	17,307	3,600	3,328	1,960	568	43,823
April	18,708	17,706	3,706	3,372	2,033	684	46,209
May	18,064	15,628	4,112	3,126	1,882	641	43,453
June	17,146	14,852	4,130	2,962	1,831	528	41,449
1937-38—							
July	18,016	16,032	4,411	2,793	1,925	607	43,784
August	16,009	14,176	3,848	2,590	1,775	526	38,924
September	18,212	15,303	4,285	2,842	1,871	520	43,033
October	18,693	16,978	4,301	3,122	2,074	537	45,705

AMOUNTS ON DEPOSIT IN SAVINGS BANKS.

Amount on deposit at end of—	New South Wales.	Victoria.	Queensland.	South Australia.	Western Australia.	Tasmania.	Australia (a)
	£'000.	£'000.	£'000.	£'000.	£'000.	£'000.	£'000.
1928-29 ..	85,728	72,707	24,076	25,228	11,609	5,811	225,486
1929-30 ..	82,465	69,367	23,901	24,012	11,729	5,699	217,511
1930-31 ..	69,811	63,243	22,554	21,422	10,867	5,366	193,375
1931-32 ..	71,648	65,680	22,952	21,567	10,218	5,587	197,965
1932-33 ..	72,308	67,814	23,453	22,515	10,064	5,865	202,282
1933-34 ..	75,714	69,971	24,834	23,438	10,399	6,659	210,676
1934-35 ..	77,906	72,019	26,197	24,185	10,929	6,430	217,949
1935-36 ..	80,000	73,890	27,132	25,309	11,517	6,818	224,962
1936-37 ..	81,952	79,720	27,304	26,506	11,835	7,215	230,851
1936-37—							
July ..	79,736	73,585	27,059	25,377	11,525	6,850	224,427
August ..	79,790	73,645	27,079	25,517	11,592	6,929	224,849
September ..	79,773	73,556	27,333	25,543	11,620	6,918	225,045
October ..	79,955	73,677	27,476	25,455	11,682	6,907	225,457
November ..	79,966	73,663	27,628	25,473	11,684	6,905	225,826
December ..	79,467	73,273	27,347	25,434	11,517	6,859	224,195
January ..	79,740	73,569	27,103	25,558	11,493	6,889	224,653
February ..	78,838	73,814	26,940	25,652	11,481	7,057	225,064
March ..	79,770	73,892	26,795	25,716	11,497	7,043	225,029
April ..	79,961	74,302	26,700	25,857	11,543	7,080	225,755
May ..	79,979	74,292	26,606	25,784	11,574	7,114	225,663
June ..	81,952	75,720	27,304	26,506	11,835	7,215	230,851
1937-38—							
July ..	81,949	75,608	27,462	26,530	11,797	7,276	231,140
August ..	82,229	76,116	27,621	26,485	11,838	7,412	232,029
September ..	82,467	76,294	27,972	26,457	11,892	7,434	232,845
October ..	82,960	76,813	28,267	26,510	11,945	7,465	234,297

(a) Including Territories.

INTEREST RATES AND BOND YIELDS: AUSTRALIA.

Period	Australian Trading Banks. Interest on Fixed Deposits.				Common-wealth Savings Bank.	Yield on Australian Securities.				
					Deposits (maximum rate).	Treasury Bills.	Australian Government Loans.			
	3 months.	6 months.	12 months.	24 months.			All Issues.	4 ¹ / ₂ % 1941.	4 ¹ / ₂ % 1944 and 1947.	4 ¹ / ₂ % 1950, 5 ¹ / ₂ % 1951, 5 ¹ / ₂ % 1952, 5 ¹ / ₂ % 1953, 5 ¹ / ₂ % 1954, 5 ¹ / ₂ % 1955, 5 ¹ / ₂ % 1956, 5 ¹ / ₂ % 1957, 5 ¹ / ₂ % 1958, 5 ¹ / ₂ % 1959, 5 ¹ / ₂ % 1960, 5 ¹ / ₂ % 1961.
1928-29 ..	4.0	4.0	4.5	5.0	3.9	4.50	5.35
1929-30 ..	4.2	4.3	4.7	5.1	4.0	5.22	5.71
1930-31 ..	4.5	4.8	5.0	5.3	4.0	5.88	(a)
1931-32 ..	3.0	3.4	3.8	4.1	3.0	4.17	(b) 4.99	(b) 5.24	(b) 5.02	(b) 4.77
1932-33 ..	2.2	2.7	3.0	3.2	2.6	3.35	3.98	3.89	3.95	3.96
1933-34 ..	2.0	2.4	2.7	2.9	2.5	2.44	3.53	3.41	3.50	3.64
1934-35 ..	1.3	1.8	2.3	2.6	2.1	1.95	3.32	3.19	3.28	3.45
1935-36 ..	1.3	1.8	2.4	2.6	2.0	1.75	3.76	3.72	3.76	3.84
1936-37 ..	2.0	2.5	2.75	3.0	2.0	1.75	3.89	3.81	3.88	3.95
1936-37—										
July ..	2.0	2.5	2.75	3.0	2.0	1.75	3.90	3.81	3.84	3.95
August ..	2.0	2.5	2.75	3.0	2.0	1.75	3.92	3.85	3.92	3.98
September ..	2.0	2.5	2.75	3.0	2.0	1.75	3.90	3.78	3.89	3.97
October ..	2.0	2.5	2.75	3.0	2.0	1.75	3.90	3.84	3.86	3.94
November ..	2.0	2.5	2.75	3.0	2.0	1.75	3.94	3.92	3.90	3.94
December ..	2.0	2.5	2.75	3.0	2.0	1.75	4.00	3.93	4.00	4.02
January ..	2.0	2.5	2.75	3.0	2.0	1.75	4.01	3.85	3.95	4.02
February ..	2.0	2.5	2.75	3.0	2.0	1.75	4.03	3.91	3.98	4.04
March ..	2.0	2.5	2.75	3.0	2.0	1.75	4.00	3.93	3.94	4.02
April ..	2.0	2.5	2.75	3.0	2.0	1.75	3.92	3.78	3.84	3.98
May ..	2.0	2.5	2.75	3.0	2.0	1.75	3.85	3.65	3.80	3.94
June ..	2.0	2.5	2.75	3.0	2.0	1.75	3.72	3.52	3.62	3.84
1937-38—										
July ..	2.0	2.5	2.75	3.0	2.0	1.75	3.75	3.63	3.71	3.85
August ..	2.0	2.5	2.75	3.0	2.0	1.75	3.75	3.68	3.76	3.85
September ..	2.0	2.5	2.75	3.0	2.0	1.75	3.81	3.77	3.79	3.86
October ..	2.0	2.5	2.75	3.0	2.0	1.75	3.78	3.73	3.75	3.85
November ..	2.0	2.5	2.75	3.0	2.0	1.75	3.65	3.60	3.57	3.75

(a) During this year the bond market was disorganized.

(b) Nine months October to June.

RATES OF INTEREST ON FIRST MORTGAGES: NEW SOUTH WALES.

Month.	First Mortgages Registered. Proportion of total amount for which rates are disclosed.				
	Rate of Interest per cent. per annum.				
	4 ¹ / ₂ or under.	Over 4 ¹ / ₂ -5.	Over 5-6.	Over 6-7.	Over 7.
1936—					
July ..	33	45	18	2	2
August ..	48	27	17	4	4
September ..	35	40	17	3	5
October ..	23	61	13	2	1
1937—					
July ..	22	50	25	2	1
August ..	21	41	30	7	1
September ..	29	34	33	2	2
October ..	45	30	22	2	1

EXCHANGE RATES AND GOLD PRICES.

Period.	Exchange Rates.			Gold Prices.	
	Australia on London(a)	London on New York.	Australia on New York.(b)	Australia: Export Parity.	London.
	£A. per £100 stg.	£ per £ stg.	\$ per £A.	£A. per fine oz.	£ stg. per fine oz.
1928-29	100.25	4.852	4.828	4.217	4.248
1929-30	102.94	4.863	4.713	4.312	4.248
1930-31	118.00	4.861	4.111	4.961	4.248
1931-32	127.36	3.903	3.059	6.762	5.359
1932-33	125.25	3.529	2.771	7.495	6.066
1933-34	125.25	4.934	3.898	8.131	6.584
1934-35	125.25	4.925	3.917	8.741	7.077
1935-36	125.25	4.957	3.940	8.653	7.035
1936-37	125.25	4.939	3.929	8.691	7.041
1936-37—					
July	125.25	5.023	3.994	8.571	6.944
August	125.25	5.027	3.996	8.535	6.918
September	125.25	5.041	4.016	8.517	6.900
October	125.25	4.900	3.910	8.759	7.096
November	125.25	4.888	3.886	8.780	7.113
December	125.25	4.907	3.902	8.746	7.085
January	125.25	4.908	3.904	8.745	7.085
February	125.25	4.894	3.892	8.771	7.105
March	125.25	4.885	3.884	8.786	7.118
April	125.25	4.916	3.904	8.721	7.065
May	125.25	4.939	3.929	8.678	7.050
June	125.25	4.935	3.925	8.675	7.028
1937-38—					
July	125.25	4.966	3.950	8.642	7.001
August	125.25	4.983	3.964	8.612	6.977
September	125.25	4.934	3.941	8.663	7.018
October	125.25	4.936	3.941	8.673	7.026

(a) Average of buying and selling rates for Telegraphic Transfers. Date. Computed through London prior to that date.

(b) Selling rate. Direct quotations from July, 1932, to

COMMONWEALTH AND STATES: REVENUE AND EXPENDITURE.

The following tables have been prepared from information published in the monthly statements issued by each Treasury.

Government of—	Four months ended 31st October.					
	1936-37.			1937-38.		
	Revenue.	Expenditure.	Surplus (+) or Deficit (-).	Revenue.	Expenditure.	Surplus (+) or Deficit (-).
	£'000.	£'000.	£'000.	£'000.	£'000.	£'000.
New South Wales (a) ..	15,173	16,544	- 1,371	15,773	17,415	- 1,642
Victoria	6,137	7,865	- 1,728	5,996	8,132	- 2,136
Queensland	4,590	4,938	- 348	4,706	5,192	- 486
South Australia ..	3,153	3,744	- 611	3,337	3,834	- 497
Western Australia ..	3,114	3,452	- 338	3,079	3,612	- 533
Tasmania	907	960	- 55	970	1,041	- 71
Six States	33,054	37,503	- 4,449	33,861	39,226	- 5,365
Commonwealth ..	26,028	24,874	+ 1,154	26,450	26,130	+ 300
Grand Total (b) ..	59,711	59,606	- 3,295	56,980	62,045	- 5,065

Government of—	Year 1936-37.			Estimate year 1937-38.		
	Revenue.	Expenditure.	Surplus (+) or Deficit (-).	Revenue.	Expenditure.	Surplus (+) or Deficit (-).
	£'000.	£'000.	£'000.	£'000.	£'000.	£'000.
New South Wales (a) ..	55,186	53,051	+ 135	58,876	58,867	+ 9
Victoria	27,219	27,198	+ 21	27,007	26,995	+ 12
Queensland	16,555	16,815	- 260	17,047	17,377	- 330
South Australia	11,759	11,600	+ 159	12,249	12,245	+ 4
Western Australia ..	10,185	10,556	- 371	10,653	10,782	- 129
Tasmania	3,789	3,444	+ 45	3,515	3,512	+ 3
Six States	124,553	124,664	- 311	129,347	129,778	- 431
Commonwealth ..	82,808	(c)81,531	+ 1,277	85,190	(c)85,160	+ 30
Grand Total (b) ..	197,013	196,047	+ 966	204,472	204,873	- 401

(a) Excludes Metropolitan Board of Water Supply and Sewerage. (b) To avoid duplication in aggregating particulars for the Commonwealth and States, the grand totals exclude payments by the Commonwealth to the States on account of interest on States' debts, special grants and non-recurring grants. (c) Omitting expenditure from excess receipts of previous years.

POST OFFICE ACTIVITY.

Period.	Monthly average receipts of P.M.G.'s Department (a)	Broadcast Listeners' Licenses in force at end of period (b)	Telephone Services connected at end of period.	
			Lines.	Instruments.
	£'000.	No.	No.	No.
1928-29	1,071	300,528	384,358	505,554
1929-30	1,135	311,648	395,812	520,169
1930-31	1,075	331,128	376,245	498,055
1931-32	1,033	369,692	363,572	484,626
1932-33	1,053	468,430	363,776	487,662
1933-34	1,096	597,989	372,621	501,402
1934-35	1,164	720,532	396,025	532,377
1935-36	1,239	823,613	417,661	562,868
1936-37	1,318	938,331	440,471	594,855
1936-37—				
July	1,358	841,495	419,545	565,705
August	1,190	850,844	424,566	568,566
September	1,369	859,227	424,000	571,749
October	1,259	870,667	426,098	574,214
November	1,206	876,192	428,185	577,134
December	1,418	885,345	429,916	579,567
January	1,314	891,728	431,419	581,710
February	1,255	896,853	433,010	583,960
March	1,318	903,493	434,783	586,586
April	1,438	913,644	436,615	589,563
May	1,260	925,764	438,502	592,112
June	1,487	938,331	440,471	594,855
1937-38—				
July	1,329	949,853	442,325	597,683
August	1,326	960,683	444,672	600,782
September	1,367	984,193	446,992	603,972
October	1,381	989,186	449,432	607,466

(a) Actual collections.

(b) Includes Papua.

MOTOR VEHICLE REGISTRATIONS.

Period.	Motor Vehicles on Register at end of period.			New Motor Vehicles Registered during period(s).		
	Motor Cars.	Commercial Vehicles, &c.	Motor Cycles.	Motor Cars.	Commercial Vehicles, &c.	Motor Cycles.
1928-29	474,359	71,851	88,049	63,147	14,049	8,656
1929-30	466,950	104,487	84,897	46,529	12,855	7,753
1930-31	429,206	97,933	76,966	15,479	3,822	2,768
1931-32	419,970	96,254	71,696	10,455	2,218	1,955
1932-33	436,499	105,837	72,896	14,018	3,370	2,639
1933-34	455,199	116,341	73,104	22,521	7,051	3,934
1934-35	437,684	155,721	75,045	37,199	10,602	5,247
1935-36	484,832	180,567	77,467	52,166	18,147	6,673
1936-37	499,289	214,296	77,912	48,548	24,878	7,470
1936-37—						
July	484,402	187,150	77,023	3,499	2,019	443
August	482,551	191,209	77,223	3,120	1,877	571
September	484,211	194,849	77,809	3,422	2,021	599
October	486,186	198,967	78,414	3,864	2,699	645
November	487,613	202,536	78,972	3,485	2,136	624
December	492,220	207,194	79,893	4,249	2,484	731
January	492,292	211,670	79,955	3,660	1,854	647
February	493,797	211,518	80,067	4,658	1,812	636
March	495,601	213,212	80,497	5,191	1,924	784
April	488,881	212,349	76,414	4,421	2,066	690
May	494,070	216,036	77,493	4,889	2,205	593
June	499,289	214,296	77,912	4,699	2,381	513
1937-38—						
July	497,766	222,393	77,260	4,662	2,380	642
August	501,632	225,148	77,998	4,028	2,202	640
September	504,815	227,806	78,557	4,156	2,331	632
October	508,844	229,838	78,986	4,263	2,552	679

(a) Excluding Northern Territory and extra-Metropolitan area of Western Australia; also Federal Capital Territory prior to 1935-36. The figures relating to the earlier years are approximate only, as complete particulars are not available.

OVERSEA TOURISTS AND MIGRANTS.

Monthly Averages			Tourists		Permanent Migrants		Excess of Arrivals (+) or Departures (-).
			Australians Departing Overseas.	Visitors arriving from Overseas.	Arrivals.	Departures.	
1928-29	2,079	2,185	3,148	1,089	- 1,459
1929-30	1,915	2,010	2,093	2,118	- 25
1930-31	1,034	1,619	1,079	2,168	- 1,109
1931-32	905	1,533	757	1,585	- 628
1932-33	1,516	1,518	874	1,668	- 194
1933-34	1,480	1,556	901	1,029	- 128
1934-35	1,641	2,008	1,020	959	- 61
1935-36	1,756	1,957	1,095	935	- 160
1936-37	1,957	2,264	1,148	954	- 194
1936-37—						894	- 250
July	1,010	1,610	644	837	- 251
August	985	1,676	1,068	557	- 280
September	875	1,825	837	829	- 324
October	1,094	2,202	1,155	833	- 493
November	1,345	2,440	1,326	950	- 289
December	2,890	3,123	1,259	1,058	- 492
January	2,395	2,732	1,550	1,689	- 19
February	3,155	2,198	1,070	1,305	- 187
March	3,876	3,236	1,490	1,095	- 34
April	2,469	2,525	1,129	1,100	- 12
May	2,668	1,776	1,148	857	- 266
June	1,159	2,122	1,123		
1937-38—						939	- 236
July	1,525	2,041	1,275	606	- 633
August	1,661	1,843	1,259	797	- 521
September	1,668	1,929	1,318	719	- 765
October	1,177	2,155	1,482		

BANKRUPTCIES AND INSOLVENCIES.

Monthly Averages.	Sequestrations. (a)		Compositors.		Deeds of Arrangement.		Total.	
	Number.	Gross Liabilities.	Number.	Gross Liabilities.	Number.	Gross Liabilities.	Number.	Gross Liabilities.
		£'000.		£'000.		£'000.		£'000.
1928-29 ..	90	106	47	73	42	159	179	338
1929-30 ..	119	162	62	102	85	232	264	496
1930-31 ..	154	161	95	150	138	354	387	665
1931-32 ..	100	172	63	200	84	179	247	551
1932-33 ..	80	164	45	138	60	138	165	440
1933-34 ..	82	126	47	121	49	100	178	347
1934-35 ..	67	84	42	125	35	66	144	277
1935-36 ..	70	85	39	136	34	64	143	285
1936-37 ..	73	91	35	150	31	60	139	281
1936-37—								
July ..	76	44	28	48	29	67	133	159
August ..	73	102	27	81	31	44	131	227
September ..	57	72	23	59	32	93	112	224
October ..	77	76	27	135	23	44	127	255
November ..	65	60	24	47	38	78	127	185
December ..	88	126	19	66	57	75	142	265
January ..	46	57	21	221	21	31	88	309
February ..	71	59	49	155	53	90	153	504
March ..	81	96	76	392	42	56	199	544
April ..	70	128	60	214	28	55	158	397
May ..	66	76	36	71	30	57	132	264
June ..	92	154	35	79	38	47	165	280
1937-38—								
July ..	94	84	19	43	25	45	138	172
August ..	69	100	23	52	34	58	126	210
September ..	76	69	19	46	25	31	120	146
October ..	73	74	24	75	30	49	127	198

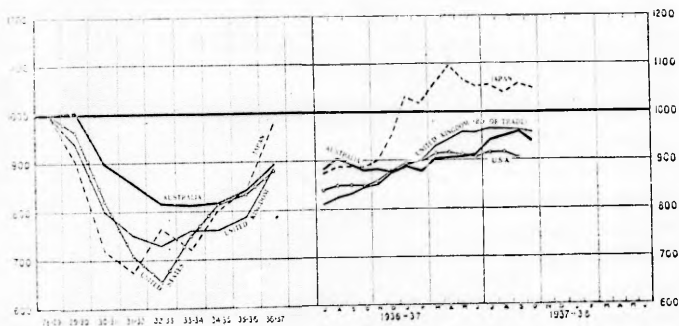
(a) Including Orders for Administration of Deceased Debtors' Estates.

(b) Years end 131st July.

WHOLESALE PRICE INDEXES : PRINCIPAL COUNTRIES.

(Base: 1928-29 = 1000.)

Year.	United Kingdom.		U.S.A.		Japan.	Germany.	France.	Italy.	Canada.	South Africa.	New Zealand.	Australia.
	Board of Trade.	Economist.	Bureau of Labour Statistics.	Bank of Japan.	Stat. Reichamt.	Stat. Générale.	Milan.	Dominion Statistician.	Census and Statistics Office.	Government Statistician.	Commonwealth Statistician.	
1928-29 ..	1,000	1,000	1,000	1,000	1,000	1,000	1,000	1,000	1,000	1,000	1,000	1,000
1929-30 ..	959	912	962	901	950	901	917	995	925	994	994	896
1930-31 ..	799	728	821	718	847	840	755	821	843	942	942	857
1931-32 ..	749	672	768	674	742	701	669	732	816	888	888	815
1932-33 ..	729	650	654	764	668	628	660	690	745	873	873	811
1933-34 ..	759	683	748	721	688	612	565	743	854	890	890	814
1934-35 ..	760	698	811	798	724	542	581	757	811	905	905	840
1935-36 ..	786	740	832	841	742	549	719	764	823	939	939	892
1936-37 ..	885	836	879	975	755	770	801	850	831	972	972	881
1937-38--												
July ..	869	754	857	872	749	605	742	785	812	935	935	904
August ..	823	758	848	886	751	621	743	804	—	944	944	891
September ..	831	775	848	887	750	650	750	806	—	952	952	879
October ..	844	784	847	885	750	738	765	813	832	955	955	881
November ..	850	803	857	899	750	761	762	815	—	956	956	874
December ..	872	834	875	950	754	863	775	842	—	971	971	888
January ..	889	852	895	1,030	756	832	800	858	848	971	971	877
February ..	898	866	897	1,017	758	824	826	875	—	983	983	903
March ..	928	917	915	1,059	762	851	836	902	—	986	986	904
April ..	942	901	915	1,095	760	854	852	969	831	992	992	906
May ..	957	907	911	1,066	761	851	870	898	—	1,006	1,006	911
June ..	956	886	906	1,052	762	861	891	893	—	1,014	1,014	941
1937-38--												
July ..	963	891	914	1,055	765	900	..	923	854	1,013	1,013	949
August ..	962	877	915	1,039	767	933	..	903	—	1,022	1,022	957
September ..	960	865	904	1,057	761	973	—	957
October ..	956	839	..	1,049	..	972	956



WORLD PRODUCTION AND TRADE.

(Base: 1928-29 = 1,000.)

Period.	Indexes of Industrial Production (Manufacturing and Mining).										Trade.
	United Kingdom	U.S.A.		Japan.	Germany.	France. (6)	Canada. (c)	U.S.S.R.	World including U.S.S.R.	World excluding U.S.S.R.	Quantity of International Trade
	Board of Trade.	Federal Reserve Board.		Official.	Inst. for Konjunkt.	Official.	Official.	Gosplan.	L. of N.	L. of N.	L. of N.
		Adjusted. (e)	Unadjusted.								
1928-29 ..	1,000	1,000	1,000	(a)1,000	1,000	1,000	1,000	1,000	(a)1,000	(a)1,000	(a)1,000
1929-30 ..	1,018	938	956	(a) 948	982	1,055	955	1,338	(a) 884	(a) 863	979
1930-31 ..	895	747	759	(a) 916	759	994	775	1,626	(a) 791	(a) 748	881
1931-32 ..	872	603	599	936	601	759	677	2,056	(a) 690	(a) 630	804
1932-33 ..	867	575	568	1,057	564	745	549	2,785	705	645	728
1933-34 ..	977	710	768	1,205	714	787	702	2,481	631	761	758
1934-35 ..	1,065	699	693	1,360	878	693	771	2,985	883	791	774
1935-36 ..	1,158	817	816	1,452	1,012	720	857	3,886	1,021	891	828
1936-37 ..	1,262	974	970	1,633	1,141	743	965	(J)1,016	920
1936-37—	—	—	—	—	—	—	—	—	—	—	—
July ..	—	925	894	1,511	1,115	728	885	3,817	1,085	961	—
August ..	1,186	923	902	1,569	1,118	690	915	4,695	1,101	965	853
September ..	—	932	911	1,504	1,145	705	960	4,622	1,138	978	—
October ..	—	940	945	1,691	1,141	728	992	4,962	1,165	990	—
November ..	1,281	974	979	1,652	1,157	735	962	4,966	1,198	1,024	919
December ..	—	1,034	970	1,724	1,140	742	958	4,750	1,217	1,055	—
January ..	—	974	955	1,575	1,073	745	944	1,010	—
February ..	1,276	991	996	1,615	1,084	764	951	1,027	928
March ..	—	1,009	1,038	1,736	1,138	772	966	1,047	—
April ..	—	1,009	1,038	1,737	1,189	780	1,018	1,059	—
May ..	1,505	1,009	1,058	1,739	1,199	772	997	1,062	981
June ..	—	974	979	1,706	1,195	757	1,032	—
1937-38—	—	—	—	—	—	—	—	—	—	—	—
July ..	—	974	953	..	1,187	742	1,034	—
August	1,000	979	675	1,005

(a) Year ending 31st December following. (b) Monthly figures partly adjusted for seasonal variations. (c) Monthly figures adjusted for seasonal variations. (d) Eleven months 1936-37.

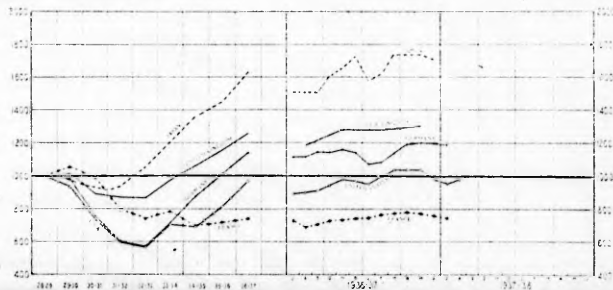


Fig.
No.
11

IMPORTS OF MERCHANDISE AND SILVER

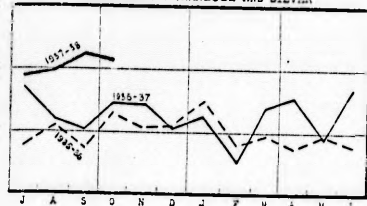


Fig.
No.
12

EXPORTS OF MERCHANDISE AND SILVER

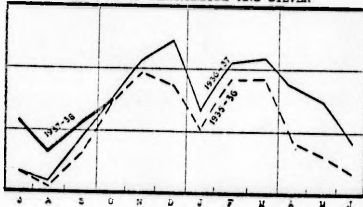
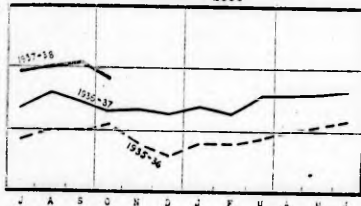


Fig.
No.
13
WHOLESALE PRICE INDEX: BASIC MATERIALS AND FOODS
1926-29 = 1000



Index
No.

EXPORT PRICE INDEX: AUSTRALIA
1926-29 = 1000

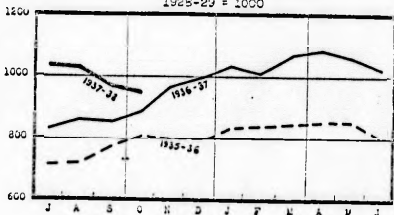
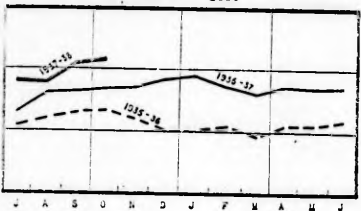


Fig.
No.
14
RETAIL PRICE INDEX - FOOD & GROCERIES: SIX CAPITALS
1926-29 = 1000



Index
No.
15
ORDINARY SHARE PRICE INDEX (MELB. STOCK EXCHANGE)
1926-29 = 1000

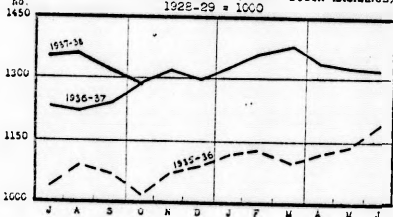
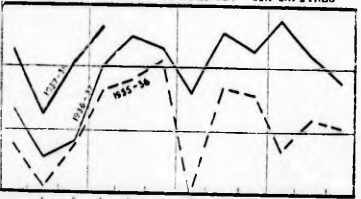
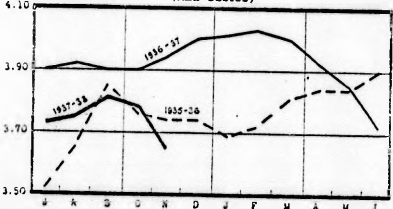


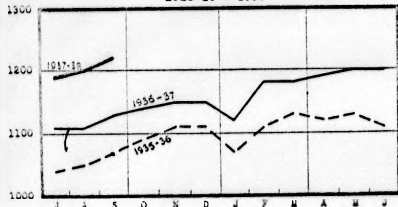
Fig.
No.
16
WEEKLY AVERAGE BANK CLEARINGS: SIX CAPITALS



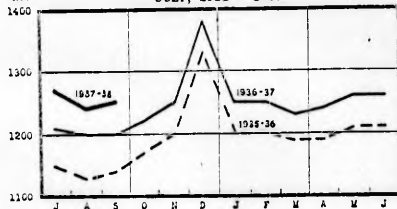
%
AVERAGE YIELD: AUSTRALIAN CONSOLIDATED LOANS
(ALL ISSUES)



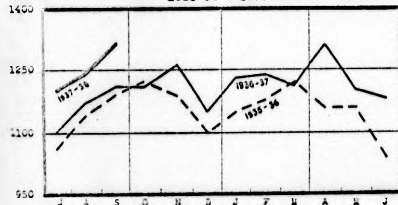
Index No. FACTORY EMPLOYMENT INDEX: AUSTRALIA
1928-29 = 1000



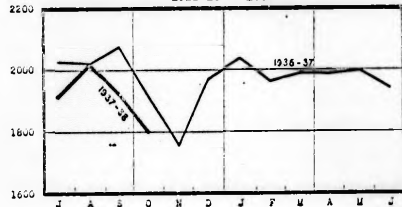
Index No. RETAIL STORE EMPLOYMENT INDEX
JULY, 1933 = 1000



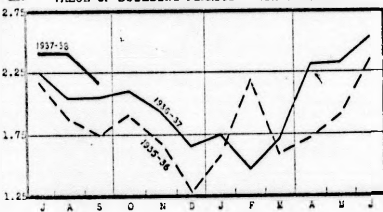
Index No. FREIGHT TONNAGE INDEX: MAINLAND RAILWAYS
1933-34 = 1000



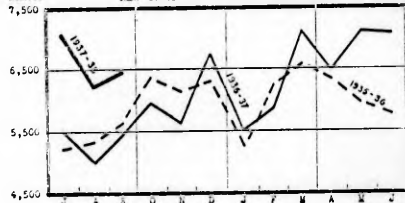
Index No. PIG IRON PRODUCTION INDEX: AUSTRALIA
1928-29 = 1000



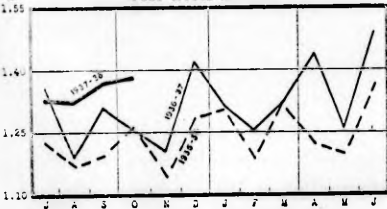
Index No. VALUE OF BUILDING PERMITS: SIX CAPITALS



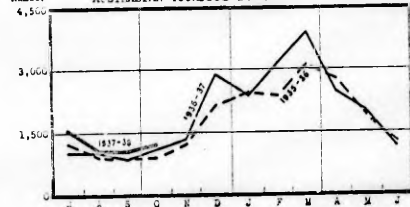
Number NEW CARS AND TRUCKS REGISTERED



Index No. POST OFFICE RECEIPTS

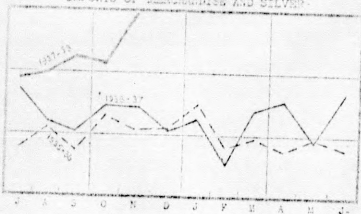


Number AUSTRALIAN TOURISTS DEPARTING OVERSEAS



418
21

IMPORTS OF MERCHANDISE AND SILVER

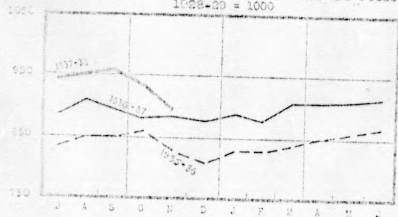


419
16

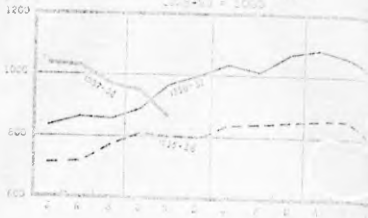
EXPORTS OF MERCHANDISE AND SILVER



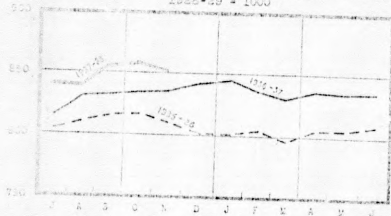
INDEX: WHOLESALE PRICE INDEX: BASIC MATERIALS AND FOODS, 1928-29 = 1000



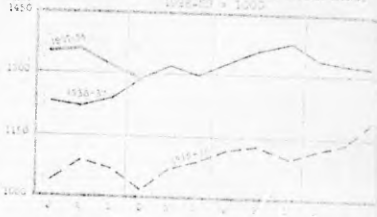
INDEX: WHOLESALE PRICE INDEX: MANUFACTURES, 1928-29 = 1000



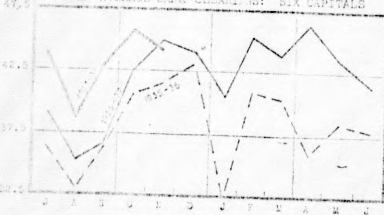
INDEX: WHOLESALE PRICE INDEX: FOOD & GROCERIES: SIX CAPITALS, 1928-29 = 1000



INDEX: WHOLESALE PRICE INDEX: MANUFACTURES: STOCK EXCHANGES, 1928-29 = 1000



INDEX: WEEKLY AVERAGE BANK CLEARINGS: SIX CAPITALS



AVERAGE YIELD: AGRICULTURAL INVESTMENTS: 1928-29 = 1000

