

South Pacific statistics at a glance

Compiled by 'Alopi Latukefu

South Pacific Economic and Social Database

and Ruel Abello

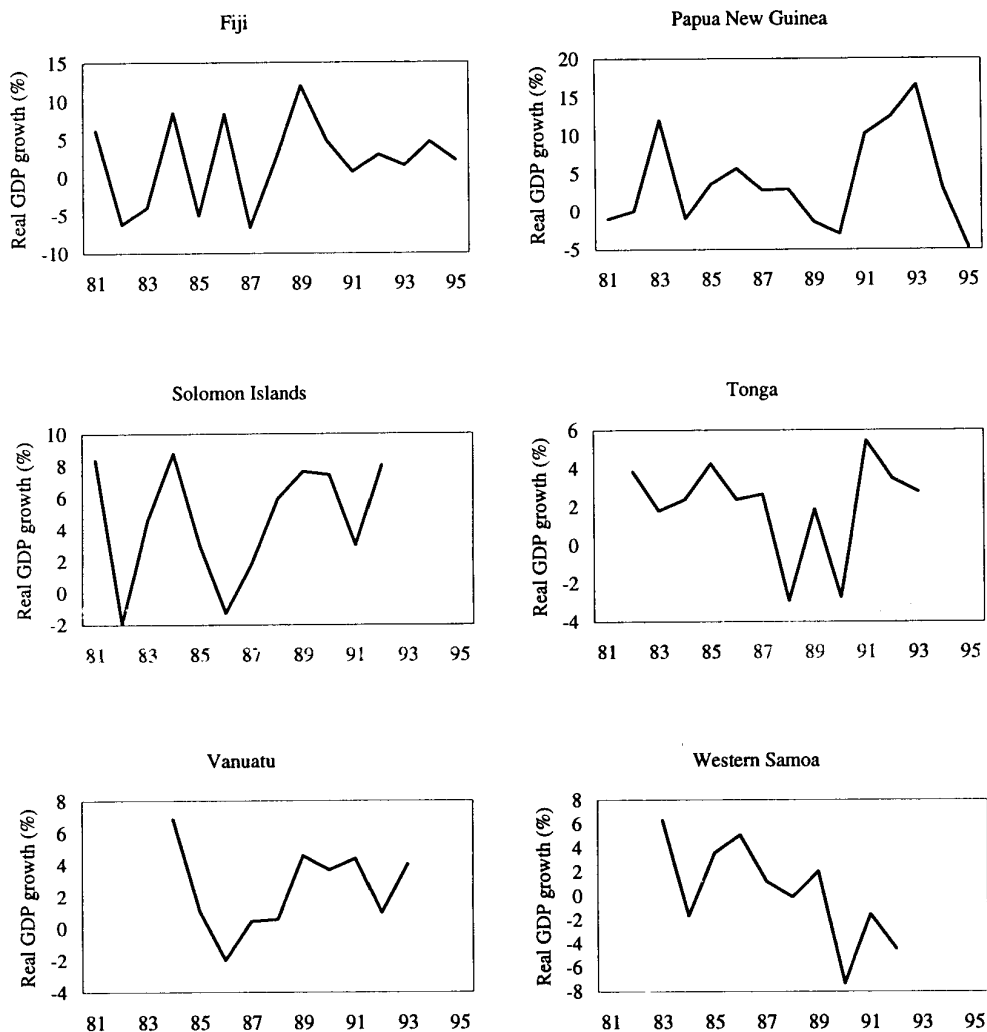
National Centre for Development Studies

Figure

1	Real GDP growth rates, 1980–95	129
2	Consumer price quarterly indexes, 1992–96	130
3	Merchandise trade, 1986–95	131
4	Current account balance, 1986–96	132
5	GDP per capita, 1986–95	133
6	Quarterly interest rates, 1993–96	134
7	Exchange rates, 1986–96	135



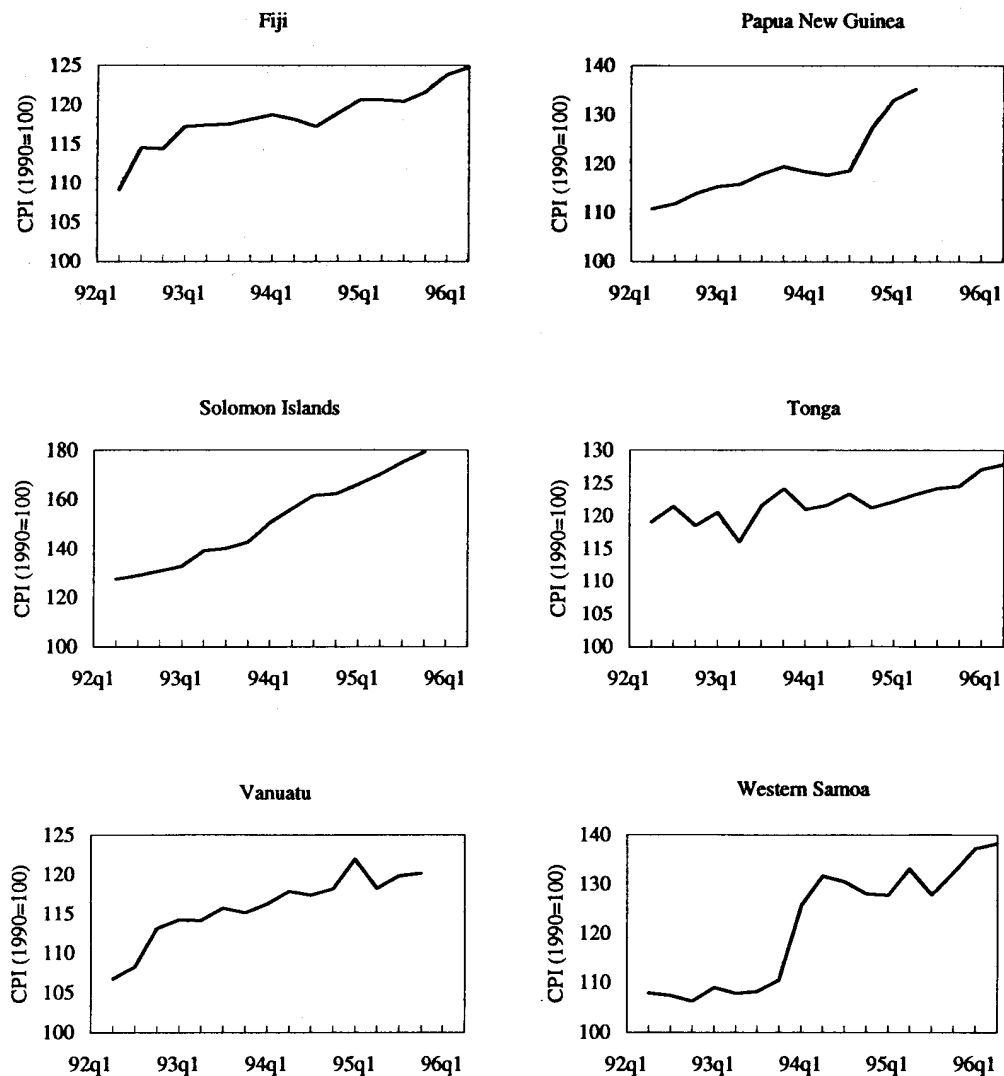
Figure 1 Real GDP growth rates, 1980–95 (per cent)



Source: South Pacific Economic and Social Database, National Centre for Development Studies, The Australian National University, Canberra.



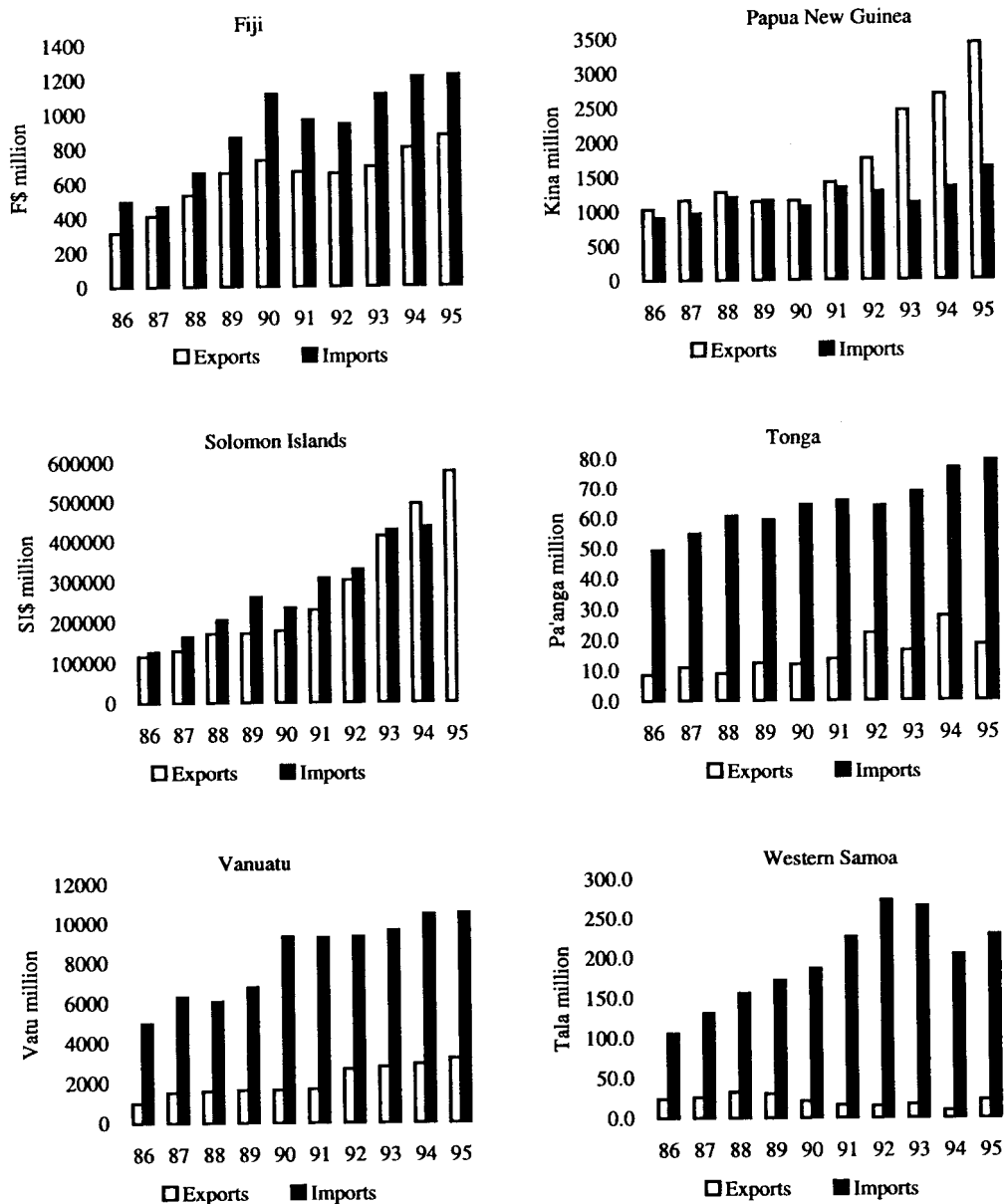
Figure 2 Consumer price quarterly indexes, 1992–96 (1990=100)



Source: South Pacific Economic and Social Database, National Centre for Development Studies, The Australian National University, Canberra.



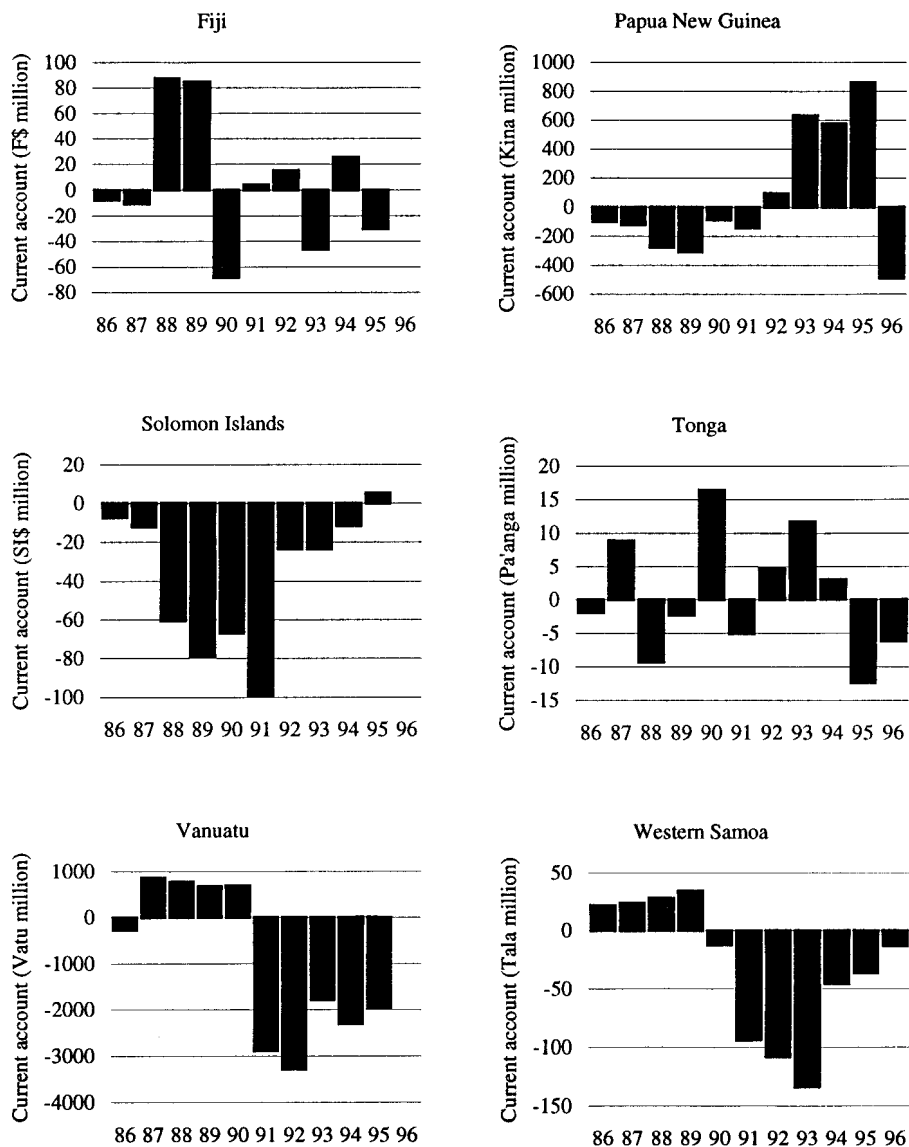
Figure 3 Merchandise trade, 1986–95



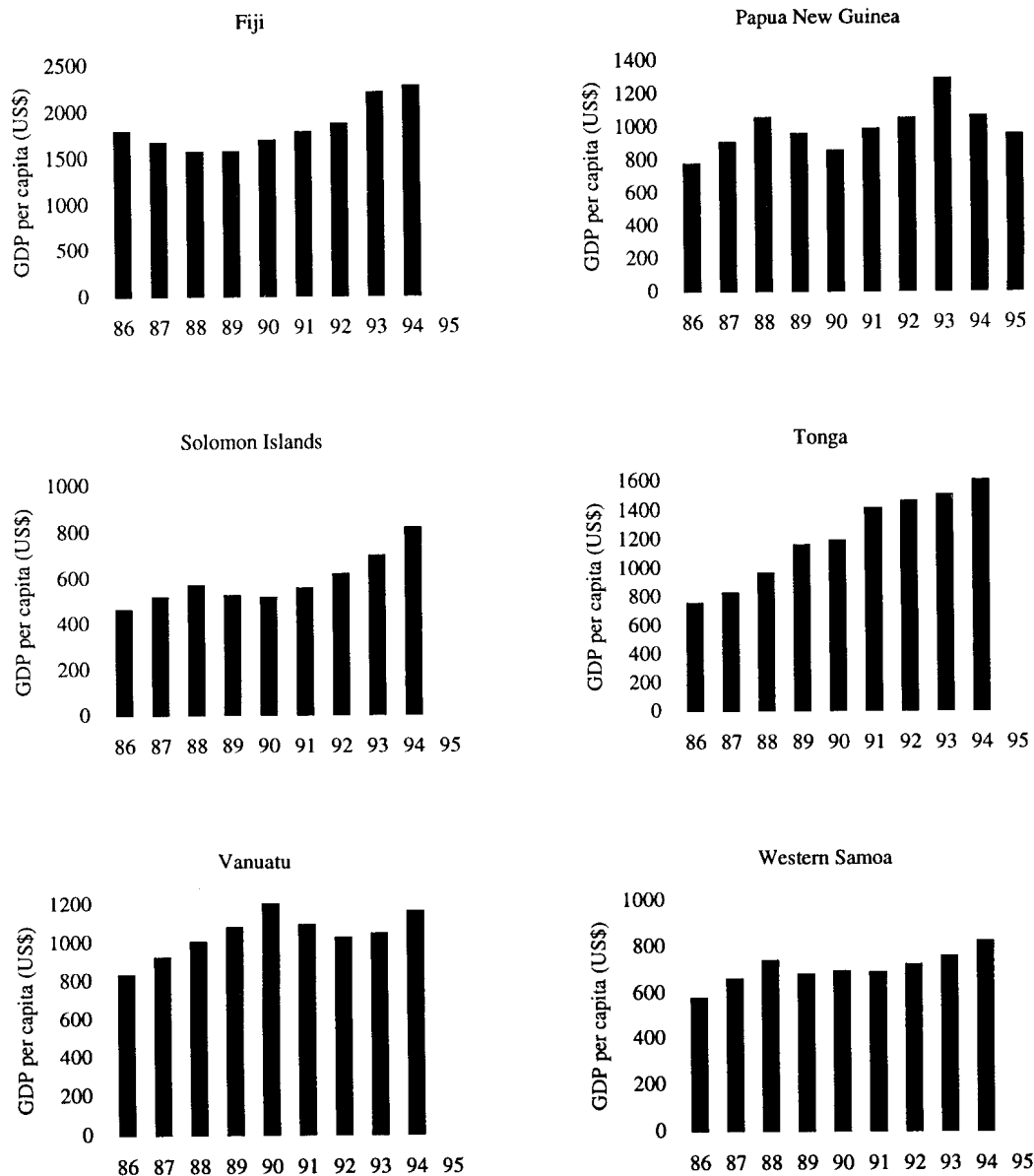
Source: South Pacific Economic and Social Database, National Centre for Development Studies, The Australian National University, Canberra.



Figure 4 Current account balance as a percentage of GDP, 1986–96



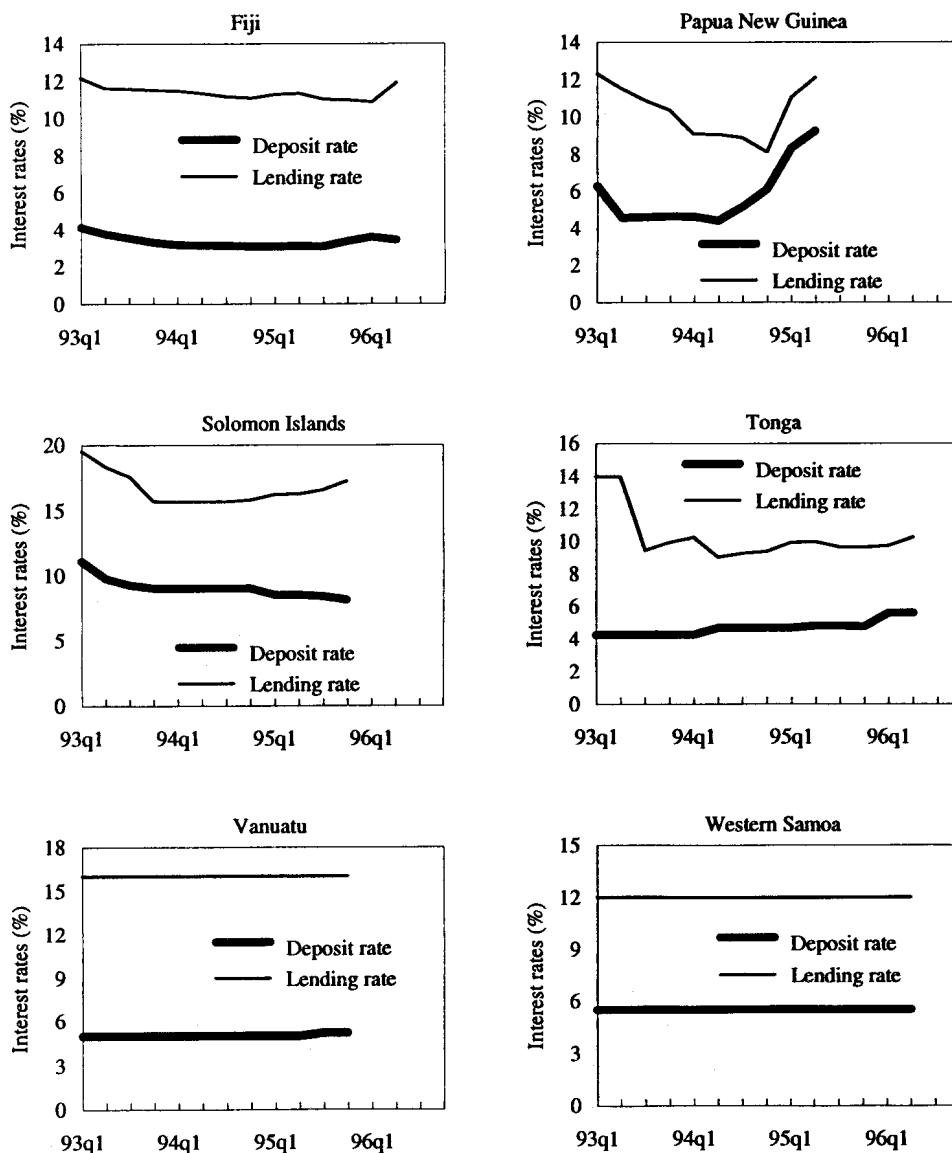
Source: South Pacific Economic and Social Database, National Centre for Development Studies, The Australian National University, Canberra.


Figure 5 GDP per capita, 1986–95 (US\$)


Source: South Pacific Economic and Social Database, National Centre for Development Studies, The Australian National University, Canberra.



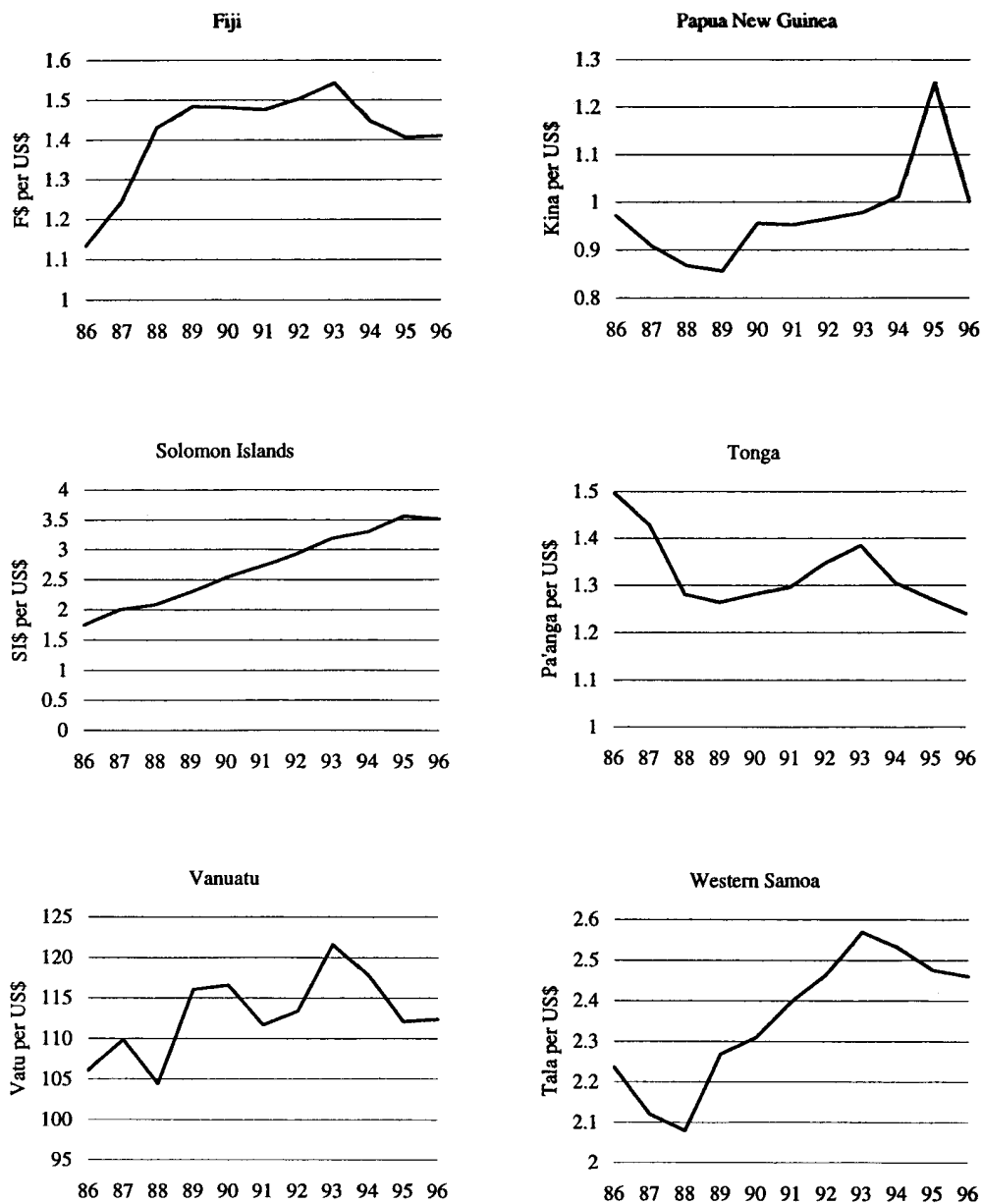
Figure 6 Quarterly interest rates, 1993–96 (per cent)



Source: South Pacific Economic and Social Database, National Centre for Development Studies, The Australian National University, Canberra.



Figure 7 Exchange rates, 1986–96



Source: South Pacific Economic and Social Database, National Centre for Development Studies, The Australian National University, Canberra.