

PLAN

Shewing an area offered for Lease under Part VII of the Western Lands Acts
 COUNTY OF BLAXLAND

Within the areas withdrawn from Dine Dine W.L.L. 20.
 and North Euabalong W.L.L. 577

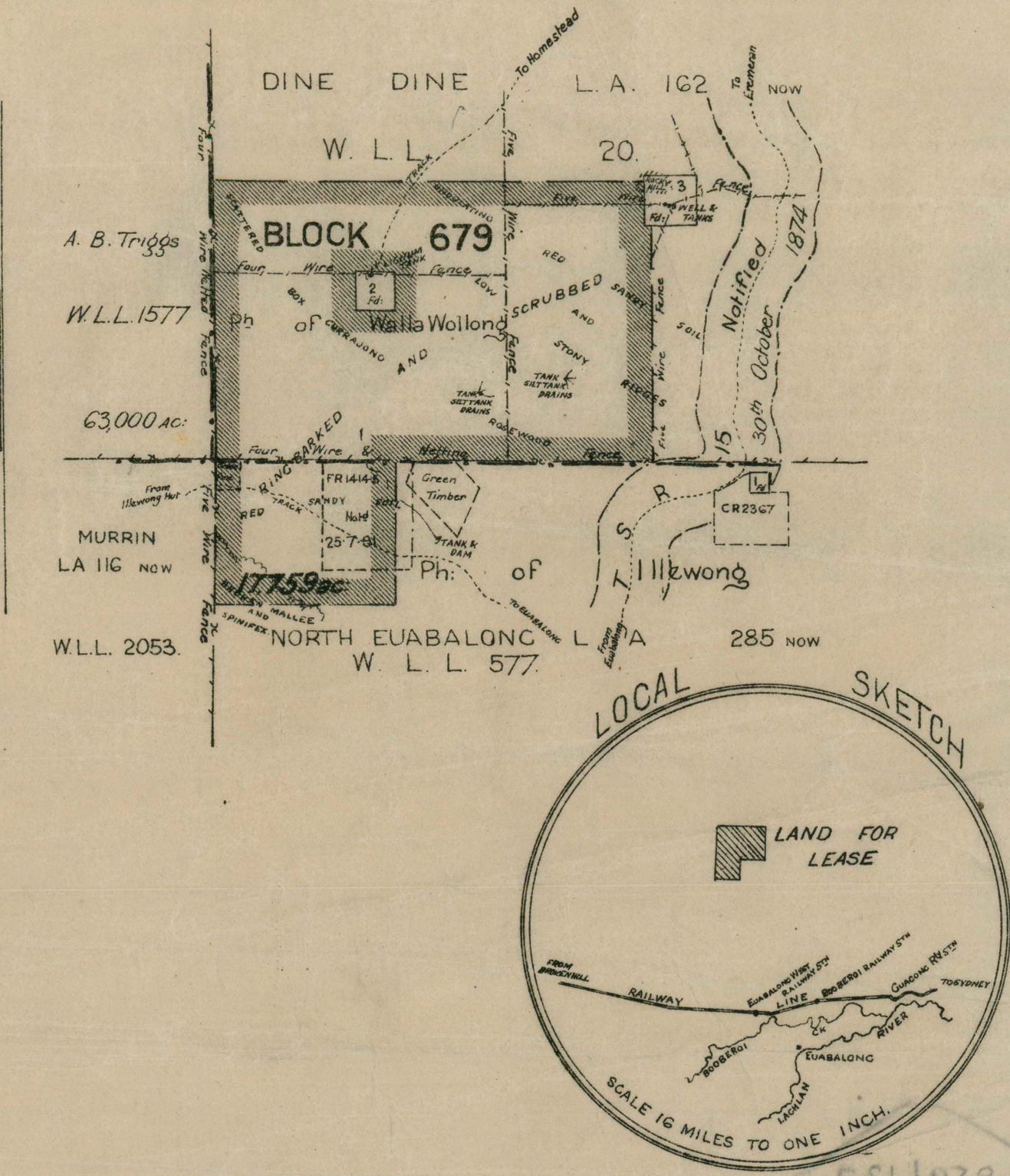
WESTERN DIVISION
 SCALE 2 MILES TO ONE INCH

Compiled, Drawn and Printed at the Department of Lands, Sydney N.S.W. Dec. 19

Applications will be received at the Western Land Board Office, Sydney up to the 30th January 1920

SCHEDULE

BLOCK NUMBER	AREA	ANNUAL RENTAL
BLOCK 679	17,759 ac.	£ 19.4.9



NOTE:-Lands available for W.L. Lease, shewn thus

