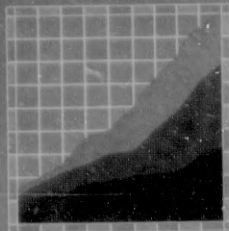


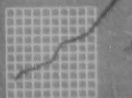
Statistics Weekly

Thursday, 13 September 1990



The week in statistics ...

- Tourist accommodation — occupancy remains low 2
- Sharp fall in manufacturing production 2
- Labour market weakens in August 3
- Australia's trades qualified workers 4
- Computing and advertising industries 5
- All the week's releases 6
- Calendar of key releases up to 25 September 7
- The latest ...
 - key State indicators 7
 - key national indicators 8



Statistics

Tourist accommodation — occupancy remains low

The room occupancy rate for hotels, motels and guest houses in the March quarter 1990 was 53.7 per cent, a decrease from the 55.4 per cent for the March quarter 1989 and the 56.5 per cent recorded for March quarter 1988.

This decrease in occupancy rate occurred because room nights available in hotels, motels and guest houses increased by 5.7 per cent while room nights sold increased by only 2.6 per cent.

Takings from accommodation in hotels, motels and guest houses increased by 10.1 per cent from the March quarter 1989. Average takings per room night sold rose from \$73.50 to \$78.88 over the same period.

TOURIST ACCOMMODATION
Hotels, motels and guest houses

	March quarter		Change
	1989	1990	
Room nights available ('000)	12,538	13,257	5.7%
Room nights sold ('000)	6,888	7,065	2.6%
Room occupancy rate (%)	55.4	53.7	-1.7
Takings from accommodation (\$m)	506	557	10.1%

The takings from accommodation for holiday flats and units showed an increase of only 4 per cent compared with March 1989, while takings for short term caravan parks remained constant.

For further information, order the publication *Tourist Accommodation, Australia* (8635.0), or contact John Alexander on (07) 222 6215.

Sharp fall in manufacturing production

The constant price value of manufacturing industry production fell by 5.5 per cent in the June quarter 1990 in seasonally adjusted terms. This followed a rise of 2.3 per cent in the previous quarter.

For 1989-90 the index contracted by 4.2 per cent, the first yearly decline since 1985-86.

Nine of the twelve industry subdivisions of manufacturing recorded falls in the index for the June quarter, the largest falls occurring in the wood, wood products and furniture industry (down 14.7% after two quarters of growth) and the transport equipment industry (down 13.8% after a 13.1% growth in the March quarter).

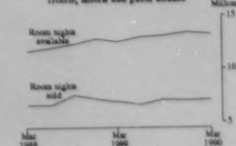
The other machinery and equipment industry recorded the largest growth (up 5.2%) for the June quarter.

Continued...

OCCUPANCY RATES
Hotels, motels and guest houses



ROOM NIGHTS
Hotels, motels and guest houses



MANUFACTURING PRODUCTION INDEX
At constant prices
1984-85 = 1000



For the year 1989-90 the largest contraction occurred in the clothing and footwear industry (down 19.2%).

The index of manufacturing production has fallen in three of the last four quarters. The impact of the June quarter estimate has pushed the manufacturing production trend measure into decline for the first time since 1985-86. The textiles industry, and chemicals, petroleum and coal products industry are the only two industries now showing increasing trends in production.

For further information, order the publication Quarterly Indexes of Manufacturing Production, Australia (8219.0) or contact Alan Tryde on (06) 252 6801. In future this information will be available from the publication Quarterly Indexes of Industrial Production, Australia (8125.0)

Labour market weakens in August

August 1990 labour force estimates showed a decrease in employment and a rise in unemployment compared with July 1990.

The seasonally adjusted estimate of employed persons was 7,893,300, a fall of 43,600 since July. The main components of this decrease were:

- a fall of 19,900 in female full-time employment to 1,976,400
- a fall of 11,500 in male full-time employment to 4,255,900

The August seasonally adjusted estimate of unemployed persons was 619,500, a rise of 27,400 since July 1990. Males seeking full-time work rose by 12,500. Females seeking full-time work rose by 9,500, while females seeking part-time work increased by 6,400.

The seasonally adjusted unemployment rate has risen each month since March 1990. At 7.3 per cent in August, it is at its highest level since June 1988. The seasonally adjusted unemployment rate for males rose by 0.2 percentage points to 7.0% in August while for females it rose by 0.5 percentage points, to 7.7%.

Seasonally adjusted, the labour force participation rate fell by 0.2 percentage points to 64.0%. The male and female participation rates both fell by 0.2 percentage points.

LABOUR FORCE ESTIMATES
Seasonally adjusted

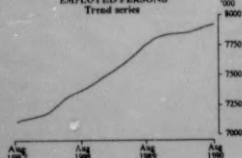
	Employed			Un- employed	Unemploy- ment rate — per cent —	Partici- pation rate
	Full-time workers	Part-time workers	Total — '000 —			
1990 —						
May	6,237.9	1,665.2	7,903.1	546.1	6.5	63.8
June	6,242.7	1,663.4	7,906.1	562.4	6.6	63.9
July	6,263.8	1,673.1	7,936.8	592.1	6.9	64.2
August	6,232.3	1,660.9	7,893.3	619.5	7.3	64.0

For further information order the publication The Labour Force, Australia, Preliminary (6202.0) or contact Don Clark (06) 252 6525.

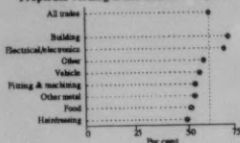
UNEMPLOYED PERSONS
Trend series



EMPLOYED PERSONS
Trend series



TRADES QUALIFIED PERSONS WITH A JOB
Proportion working in their field of trade, 1989



Australia's trades qualified workers

A national survey has found an estimated 1,343,700 persons aged 15 to 64 years with recognized trade qualifications in Australia, of whom over 90 per cent were male.

An estimated 79 per cent (1,061,900) qualified in a trade by completing an apprenticeship in Australia.

The survey, conducted in March to July last year shows that while 54 per cent were working in the trade of their qualification:

- 35 per cent were working outside that trade;
- 3 per cent were looking for work; and
- 9 per cent were not in the labour force.

An estimated 91 per cent of trades qualified males were working at the time of the survey compared with 69 per cent of females. The equivalent total labour force estimates for participation in work in July 1989 were 80 per cent and 56 per cent respectively.

The results also show that of the 546,600 persons who had left their trade:

- 74 per cent were working outside the trade;
- 38 per cent never use their trade skills while working;
- 56 per cent left the trade in the previous ten years;
- 32 per cent had left before reaching the age of 35 years and a further 26 per cent left when aged between 35 and 44 years; and
- 32 per cent left principally because they wanted a change or were dissatisfied with their job while a further 24 per cent left to seek better pay or career prospects.

TRADES QUALIFIED PERSONS, 1989
'000

State of usual residence	Working			Not in the labour force	Total trades qualified persons
	In the trade	Not in the trade	Looking for work		
NSW	231.0	168.9	15.3	40.9	456.0
Vic.	184.1	95.8	3.3	24.3	307.4
Qld	130.7	87.3	7.5	20.0	245.5
SA	67.3	44.5	3.9	13.0	128.8
WA	68.4	53.4	5.1	11.6	138.4
Tas.	21.2	10.7	2.1	2.9	36.9
Australia (including NT and ACT)	722.5	468.0	37.7	115.5	1,343.7

For further information, order the publication *Career Paths of Persons with Trade Qualifications, Australia (6243.0)*, or contact Vicki Watson on (06) 252 6155.

Computing and advertising industries

The ABS has released results of new surveys of the computing services and the advertising services industries for 1987-88. The computing industry comprised about 3,700 enterprises employing over 24,000 people in that year. The advertising services industry comprised about 2,400 enterprises with employment of over 16,000 people.

Some of the features of the statistics are:

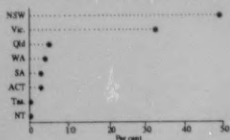
Computing services — hardware and software consultancy and professional services, systems analysis, design and programming and related services

- the industry generated turnover of \$1,628 million, equivalent to about \$67,000 for each person working in the industry,
- net operating surplus (profit) accounted for \$78 million (taking royalties, licence fees and interest into account would raise this to \$126 million),
- 30 per cent of the enterprises selected in the survey reported an operating loss for 1987-88 (not including royalties, licence fees and interest income).

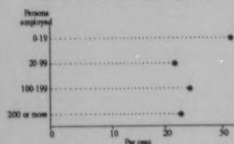
Advertising services — advertising agencies, commercial art, display advertising and similar services

- turnover of \$4,675 million was generated by the industry (largely from media and production billings),
- the industry is concentrated in New South Wales, contributing 45 per cent of the Australian turnover,
- 95 per cent of enterprises employed less than 20 people and these accounted for about 55 per cent of the industry's staff. The six largest enterprises in the industry together employed almost 2,000 people and generated over \$28 million in net operating surplus.

COMPUTING SERVICES INDUSTRY 1987-88
Share of total turnover



ADVERTISING SERVICES INDUSTRY 1987-88
Share of total turnover by enterprise size



ADVERTISING ENTERPRISES, 1987-88

Persons employed	Number of enterprises
0-19	2,279
20-99	93
100-199	12
200 or more	6
Total	2,390

ADVERTISING AND COMPUTING SERVICES INDUSTRIES, 1987-88
Number of enterprises and employment

State	Advertising services		Computing services	
	Enterprises (a)	Employment	Enterprises (a)	Employment
NSW	1,146	7,430	1,545	11,440
Vic	767	4,787	1,367	7,773
Qld	233	1,688	287	1,722
SA	165	1,014	221	958
WA	126	786	241	1,263
Tas	31	248	13	82
NT	2	95	9	19
ACT	22		188	810
Australia	2,390	16,048	3,691	24,067

(a) Enterprises operating in more than one State are counted in each State but only once in the Australian total.

The survey results for the computing and advertising services industries are found in the publications Computing Services Industry, Australia (8669.D) and Advertising Services Industry, Australia (8670.D). More detailed statistics will be released later this year. To be advised when this information becomes available contact Peter White on (06) 252 5633.

All the week's releases: 5 to 11 September

Inquiries

The ABS supplies a wide range of statistical information:

- through its bookshops
- by mail order (including subscription)
- by facsimile
- electronically.

To order any of the publications that appear in *Statistics Weekly* or to inquire about the statistics and services available from the ABS, contact Information Services at any of the offices listed below. An Information Consultancy Service in each office provides assistance of a more extensive or complex nature.

ABS Central Office

☎ PO BOX 10
BELCONNEN ACT 2616

☎ (06) 252 6627

FAX (06) 253 1404

ABS State Offices

☎ NSW (02) 268 4611
Vic. (03) 615 7000
Qld (07) 222 6351
WA (09) 323 5140
SA (08) 237 7100
Tas. (002) 20 5800
NT (089) 81 3456

Any suggestions for improvement to this publication should be addressed to:

Peter Dancovski
Editor
Statistics Weekly
(06) 252 6101

General

- Publications Issued in August 1990 (1102.0; \$5.00)
- Australian Standard Classification of Occupations (ASCO), Keyword Index of Unit Group Tasks (1228.0; \$20.00) — *new issue*
- Statistics Weekly, 6 September 1990 (1318.0; \$3.50)
- Local Government, WA, 1988-89 (1303.5; \$12.50)

Social statistics

- Participation in Sports, Vic., October 1989 (4118.2; \$10.00) — *new issue*

National accounts, finance and foreign trade

- Imports, Aust., Monthly Summary Tables, July 1990 (5433.0; \$8.00)
- Exports, Aust., June Qtr 1990 (5434.0; \$16.25)
- Commonwealth Government Finance, Aust., 1987-88 (5502.0; \$11.50)
- Stocks, Manufacturers' Sales, June Quarter 1990 and Expected Sales to June 1991, Aust., (5629.0; \$8.50)
- Commercial Finance, Aust., May 1990 (5643.0; \$5.00)
- Company Profits, Aust., June Qtr 1990 (5651.0; \$5.00)

Labour statistics and prices

- Labour Statistics in Brief, 1990 (6104.0; free)
- The Labour Force, Aust., August 1990, Preliminary (6202.0; \$8.50)
- The Labour Force, Aust. — Preliminary Data on Floppy Disk, August 1990 (6271.0; \$60.00)
- 1988-89 Household Expenditure Survey, Aust.: Household Characteristics (6531.0; \$15.50)

Agriculture

- Livestock Products — Meat, Qld, July 1990 (7204.3; \$3.30)

Secondary industry and distribution

- Research and Experimental Development, Business Enterprises, Aust., 1988-89 (8104.0; \$8.00)
- Quarterly Indexes of Manufacturing Production, Aust., June Qtr 1990 (8219.0; \$7.50) — *final issue*
- Production of Clothing and Footwear, Aust., June 1990 (8358.0; \$8.50)
- Production of Food, Drink, Tobacco and Stock and Poultry Food, Aust., May 1990 (8359.0; \$8.50)
- Production of Fibres, Yarns, Fabrics, Bedding and Floor Coverings, Aust., May 1990 (8360.0; \$8.50)
- Production of Building Materials and Fittings, Aust., June 1990 (8361.0; \$5.50)
- Production of Transport Equipment, Aust., June 1990 (8363.0; \$3.50)
- Production of Metal Products, Aust., June 1990 (8367.0; \$4.50)
- Production of Energy Products, Aust., June 1990 (8368.0; \$3.50)
- Tourist Accommodation, Aust., March Qtr 1990 (8635.0; \$9.00)
- Computing Services Industry, Aust., 1987-88 (8669.0; \$8.00) — *new issue*
- Advertising Services Industry, Aust., 1987-88 (8670.0; \$8.00) — *new issue*
- Building Approvals, NSW, July 1990 (8731.1; \$8.60)
- Building Approvals: Small Area Statistics, Qld, 1989-90 (8733.3; \$8.00)
- Dwelling Unit Commencements Reported by Approving Authorities, Tas., June 1990 (8741.6; \$3.30)

Transport

- Motor Vehicle Registrations, WA, July 1990 (9303.5; \$5.50)

Calendar of key releases

Expected releases over the fortnight to 25 September 1990

September

- 12** Retail Trade, Australia, July 1990 (8501.0; \$8.50)
Building Activity, Australia: Dwelling Unit Commencements, June Quarter 1990, Preliminary (\$750.0; \$5.00)
- 13** Housing Finance for Owner Occupation, Australia, July 1990 (5609.0; \$8.00)
Price Indexes of Articles Produced by Manufacturing Industry, Australia, June 1990 (6412.0; \$6.00)
- 17** Average Weekly Earnings, States and Australia, May 1990 (6302.0; \$8.50)
- 20** Import Price Index, Australia, June Quarter 1990 (6414.0; \$5.00)
- 25** Export Price Index, Australia, July 1990 (6405.0; \$5.00)

The latest ...

Changes to key State indicators — consolidated to
11 September 1990

	NSW	Vic.	Qld	SA	WA	Tas.	NT	ACT	Aust.
— Percentage change from same period previous year —									
New capital expenditure (Mar. qtr 90) ^a	10.1	-13.5	5.6	17.7	-5.3	-35.2	n.a.	n.a.	-2.4
Retail turnover (June 90) (trend estimate)	6.9	1.9	7.4	6.6	6.9	9.0	n.a.	12.0	5.7
New motor vehicle registrations (July 90) ^a	11.8	-9.2	20.8	32.3	-17.1	n.a.	40.7	19.3	5.4
Number of dwelling unit approvals (July 90)	-3.8	-24.6	7.5	-9.2	-1.9	1.5	-28.9	7.4	-9.6
Value of total building work done (March qtr 90)	6.7	7.9	1.1	12.9	5.1	-4.0	30.9	-4.0	5.9
Employed persons (August 90) ^a	0.8	1.1	3.2	0.4	1.1	1.1	-2.7	1.3	1.2
Capital city consumer price index (June qtr 90)	8.1	7.8	6.6	6.7	8.6	6.2	6.4	6.9	7.7
Average weekly earnings (full-time adult ordinary time) (May 90)	7.0	7.9	5.6	6.6	4.4	6.0	6.0	5.6	6.7
Population (March 90)	0.8	1.3	2.8	1.0	2.6	1.0	-0.1	2.0	1.5
Room nights in licensed hotels and motels, etc (March qtr 90)	3.7	1.1	3.8	6.9	-1.3	2.3	-1.2	-7.0	2.6

^a Seasonally adjusted for States (but not Territories)



The latest ...

8

Key national indicators – consolidated to 11 September 1990

	Period	Latest figure available		Percentage change (a) on		
		Original	Seasonally adjusted	Previous period	Corresponding period last year	
National production						
Gross domestic product — current prices	\$m	June qtr 90	91,183	93,879	0.4	5.6
— 1984-85 prices			62,511	64,562	-0.9	1.0
Industrial activity						
New capital expenditure — current prices	\$m	June qtr 90	6,990	6,657	-5.3	-9.3
— 1984-85 prices				5,030	-4.6	-12.7
Expected new capital expenditure	"	Six months to Dec. 90	14,807	n.a.	n.a.	-1.6
Retail turnover — current prices (e)	"	June 90	6,873	7,082	1.1	5.7
— 1984-85 prices (e)	"	June qtr 90	14,284	14,835	0.0	1.3
New motor vehicle registrations	no.	July 90	55,954	54,999	11.8	5.4
Dwelling unit approvals	"	July 90	10,859	10,452	-5.0	-13.7
Value of all building approvals	\$m	"	1,660	1,723	-14.5	-22.3
Value of total building work done — current prices	"	Mar. qtr 90	6,922	7,562	-2.0	5.8
— 1984-85 prices	"	"	4,429	4,839	-3.0	-2.3
Manufacturers' sales	"	June qtr 90	35,329	35,201	-3.0	2.3
Expected manufacturers' sales	"	Six months to Dec. 90	75,399	n.a.	n.a.	4.6
Labour						
Employed persons	'000	August 90	7,825.2	7,893.3	-0.5	1.2
Unemployment rate †	%	"	7.0	7.3	0.4	1.3
Participation rate †	"	"	63.3	64.0	-0.2	0.6
Job vacancies	'000	Feb. 90	60.9	56.1	-15.0	-15.9
Average weekly overtime per employee	hours	"	1.4	1.4	-8.7	-3.5
Prices, profits and wages						
Consumer price index	1980-81 = 100.0	June qtr 90	207.4	n.a.	1.6	7.7
Price index of materials used in manufacturing industries	1984-85 = 100.0	June 90	116.6	n.a.	-1.9	-2.8
Price index of articles produced by manufacturing industry (f)	1988-89 = 100.0	May 90	108.8	n.a.	0.1	5.3
Company profits before income tax	\$m	June qtr 90	3,356	3,634	-10.9	-25.3
Average weekly earnings (Full-time adults; ordinary time)	\$	May 90	534.50	n.a.	1.9	6.7
Interest rates (b) (monthly average)						
90-day bank bills †	% per annum	July 90	14.70	n.a.	-0.4	-3.4
10-year Treasury bonds †	"	"	13.15	n.a.	-0.3	-0.2
Balance of payments						
Exports of merchandise	\$m	July 90	4,124	4,343	14.4	10.0
Imports of merchandise	"	"	4,424	4,180	-9.8	2.7
Balance on merchandise trade (c)	"	"	-300	163	n.a.	n.a.
Balance of goods and services (c)	"	"	-735	-175	39.4	74.6
Balance on current account (c)	"	"	-1,730	-1,232	21.0	28.5
Terms of trade (d)	1984-85 = 100.0	June qtr 90	n.a.	104.9	1.7	-4.3
Foreign investment						
Net foreign debt	\$m	30 June 90	124,528	n.a.	-0.3	13.3
Net foreign liabilities	"	"	161,820	n.a.	0.2	11.4
Exchange rates (monthly average)						
\$US	per \$A	July 90	0.7926	n.a.	-1.9	4.5
Trade weighted index	May 1970 = 100.0	"	61.1	n.a.	0.0	4.3
Other indicators						
Population (resident at end of qtr)	million	Mar. 90	17.0	n.a.	0.4	1.5
Overseas visitors (e)	'000	May 90	150	191	-2.3	11.4

(a) Based on seasonally adjusted figures where available. (b) Source: Reserve Bank of Australia. (c) For percentage changes, a minus sign indicates an increase in the deficit; no sign means a decrease in the deficit or an increase in the surplus. (d) The ratio of the price of goods and services for exports to that for imports. (e) Later figures released Wednesday, 12 September 1990. (f) Later figures released Thursday, 13 September 1990.

NOTES: † = change is shown in terms of percentage points. n.a. = not available.

Figures have been taken from a variety of ABS publications. Copies may be obtained from Information Services (see page 6).

Some of the figures shown are preliminary, some final, and some are revisions of previously published figures. Users should check the latest relevant publication or with the ABS Information Services if the status of the statistic is important.

The ABS should be acknowledged as the source when reproducing or quoting any part of this publication.

