



### LIVESTOCK PRODUCTS, AUSTRALIA MAY 1987

- PHONE INQUIRIES** • *about these statistics*—contact Mr Rick McGee on Canberra (062) 52 5337 or any ABS State office.  
• *about other statistics and ABS services*—contact **Information Services** on Canberra (062) 52 6007, 52 6627, 52 5402 or any ABS State office.
- MAIL INQUIRIES** • *write to Information Services*, ABS, P.O. Box 10, Belconnen, A.C.T. 2616 or any ABS State office.
- ELECTRONIC SERVICES** • on **VIATEL** — key \*656#. • on **AUSSTATS** — phone (062) 52 6017.  
• on **TELESTATS** — phone (062) 52 5404.

#### MAIN FEATURES

In seasonally adjusted terms, red meat production for May 1987 increased by 1.5 per cent (3,096 tonnes) to 204,661 tonnes on April 1987. Actual red meat production of 202,297 tonnes however, is 0.9 per cent (1,828 tonnes) lower than the previous month.

Total red meat production for the eleven months ended May 1987 was 2,181,182 tonnes, 6.3 per cent (129,899 tonnes) higher than the corresponding period last year. The major element of this growth was due to a 9.7 per cent (119,462 tonnes) increase in beef production and to a lesser extent, a 13.3 per cent (32,178 tonnes) increase in mutton and a 2.5 per cent (6,130 tonnes) increase in pigmeat. A drop in lamb and veal production of 8.9 (26,576 tonnes) and 3.5 per cent (1,294 tonnes) respectively served to temper the influence of beef and mutton on total red meat production over this period.

Whole milk intake by factories for April 1987, in seasonally adjusted terms, increased by 2.4 per cent (14 million litres) on March 1987, whereas actual whole milk intake decreased by 17.0 per cent (75 million litres) to 367 million litres.

Brokers and dealers receipts of taxable wool for April 1987, in seasonally adjusted terms were 75,655 tonnes, an increase of 6.3 per cent (4,481 tonnes) on the previous month and an increase of 4.5 per cent (3,261 tonnes) on April 1986. Actual April 1987 receipts of 45,479 tonnes were 17.3 per cent (9,511 tonnes) lower than March 1987. Receipts over the ten months ended April 1987 show an increase of 6.0 per cent (42,050 tonnes) on the corresponding period in 1985-86.

#### EXPLANATORY NOTES

##### Introduction

This publication contains information (preliminary where indicated) on livestock slaughterings, meat production, exports of fresh, frozen and processed meat and stocks of frozen meat, whole milk intake by factories, market milk sales by factories and receipts of taxable wool by wool brokers and dealers.

##### Livestock slaughterings and meat production

1. The statistics on slaughterings and meat production are based on a monthly collection from abattoirs and other major slaughtering establishments and include estimates of animals slaughtered on farms and by country butchers and other small slaughtering establishments.

2. Care should be taken when using this information as the figures only relate to slaughterings for human consumption and do not include animals condemned or those killed for boiling down. Also, definitions of livestock categories may differ between States and within States, particularly with regard to calves.

3. Poultry slaughtering statistics have been compiled from returns supplied by commercial poultry slaughtering establishments. Producers in the Northern Territory and the Australian Capital Territory and the many very small producers are excluded from the collection; however, the statistics

represent a high level of coverage. The Queensland statistics are based on data collected by the Queensland Department of Primary Industries.

##### Milk

5. Tables 8 and 9 contain statistics collected by the Australian Dairy Corporation (ADC) on whole milk intake and market milk sales by factories.

##### Wool receipts

6. The statistics in Table 10 show the amount of taxable wool received by brokers and dealers from wool producers. It excludes wool received by brokers on which tax has already been paid by other dealers (private buyers) or brokers.

7. The information shown is on the basis of the State in which the wool has actually been received and does not necessarily reflect the production of wool in that State.

##### Seasonal adjustment

8. Details of seasonally adjusted figures for meat, milk and wool are shown in Tables 4, 8 and 10 respectively. Information on the methods used in seasonally adjusting these series is contained in *Seasonally Adjusted Indicators, Australia* (1308.0).

##### Related publications

9. Users may also wish to refer to the following major publication which is available on request:

*Livestock and Livestock Products, Australia, 1985-86* (7221.0)

10. Current publications produced by the ABS are listed in the *Catalogue of Publications, Australia* (1101.0). The ABS also issues, on Tuesdays and Fridays, a *Publications Advice* (1105.0) which lists publications to be released in the next few days. The *Catalogue and Publications Advice* are available from any ABS office.

##### Symbols and other usages

- p preliminary—figure or series subject to revision
- .. not applicable
- n.y.a. not yet available

11. The figures shown in this publication have been revised where necessary and as a consequence may not agree with similar data shown in previous publications.

12. Where figures have been rounded, discrepancies may occur between sums of the component items and totals.

13. Unless indicated otherwise, Australian totals include data for all States and both Territories.

IAN CASTLES  
Australian Statistician

2  
1. MEAT

TABLE 1. NUMBERS OF LIVESTOCK SLAUGHTERED ('000)

	N.S.W.	VIC.	QLD	S.A.	W.A.	TAS.	AUST.	% CHANGE 1986-87 ON 1985-86
<b>CATTLE (A)-</b>								
<b>BULLS, BULLOCKS AND STEERS-</b>								
<b>YEAR ENDED 30 JUNE</b>								
1984	748.7	677.3	1,362.6	210.7	275.6	80.4	3,467.0	..
1985	483.4	656.1	1,211.0	227.4	274.6	83.6	3,301.3	..
1986	745.0	649.5	1,327.5	233.8	253.2	85.5	3,380.2	..
<b>1985-86</b>								
March	63.3	56.1	108.9	20.4	13.4	9.6	274.9	..
April	66.8	49.2	145.1	20.6	15.9	9.3	314.5	..
May	65.8	47.4	119.4	13.9	25.9	8.7	289.7	..
<b>1986-87 P</b>								
March	73.6	61.8	111.6	17.7	18.9	11.9	298.0	8.4
April	71.2	58.5	125.7	17.2	18.8	10.6	309.2	-1.7
May	69.3	48.9	129.8	19.7	26.0	10.2	310.1	7.1
<b>11 MONTHS ENDED MAY</b>								
1986	689.1	605.4	1,199.1	219.2	231.4	77.9	3,098.7	..
1987 P	762.5	605.2	1,354.5	219.2	241.8	92.7	3,358.8	8.4
<b>COWS AND HEIFERS-</b>								
<b>YEAR ENDED 30 JUNE</b>								
1984	642.7	543.3	815.2	185.2	222.8	73.2	2,563.3	..
1985	644.8	590.6	781.2	159.2	223.3	63.7	2,522.2	..
1986	774.2	649.3	879.0	156.9	195.4	57.7	2,776.6	..
<b>1985-86</b>								
March	69.7	54.3	88.0	12.9	14.1	5.3	245.3	..
April	89.3	65.4	112.2	12.5	12.0	6.5	302.3	..
May	78.7	64.7	102.0	9.8	16.9	5.7	288.7	..
<b>1986-87 P</b>								
March	87.7	65.5	91.5	13.4	18.8	6.4	284.3	15.9
April	87.3	61.2	101.0	11.2	12.3	5.8	283.1	-6.4
May	85.3	58.4	111.5	13.9	14.6	8.1	299.3	3.7
<b>11 MONTHS ENDED MAY</b>								
1986	711.7	586.9	785.9	145.0	179.4	52.1	2,514.1	..
1987 P	819.2	656.0	872.2	149.3	186.0	61.8	2,795.6	11.2
<b>TOTAL CATTLE-</b>								
<b>YEAR ENDED 30 JUNE</b>								
1984	1,391.4	1,220.6	2,177.7	395.9	496.5	153.6	6,030.3	..
1985	1,308.1	1,246.7	2,092.2	386.6	497.7	147.1	5,823.5	..
1986	1,519.2	1,298.8	2,206.5	390.7	448.6	143.2	6,156.7	..
<b>1985-86</b>								
March	133.0	110.4	196.9	33.3	27.5	14.9	520.2	..
April	156.1	114.5	257.3	33.0	28.0	15.8	616.9	..
May	144.5	112.1	221.4	23.7	42.8	14.5	578.4	..
<b>1986-87 P</b>								
March	161.3	127.3	203.1	31.0	37.7	18.3	582.2	11.9
April	158.3	119.8	236.8	28.5	31.1	16.4	592.3	-4.0
May	154.7	107.2	241.3	33.6	38.6	18.3	609.6	5.4
<b>11 MONTHS ENDED MAY</b>								
1986	1,400.8	1,192.3	1,984.9	364.2	411.0	130.0	5,612.8	..
1987 P	1,581.7	1,261.2	2,226.7	368.5	427.7	154.4	6,154.4	9.6
<b>CALVES-</b>								
<b>YEAR ENDED 30 JUNE</b>								
1984	187.8	770.8	206.6	50.5	20.6	46.4	1,284.6	..
1985	166.9	723.5	219.0	46.8	15.8	38.2	1,212.0	..
1986	192.6	745.7	221.6	37.7	13.1	32.8	1,245.1	..
<b>1985-86</b>								
March	17.7	16.2	18.4	3.1	0.7	0.4	56.7	..
April	26.4	38.9	25.1	4.4	1.0	0.8	94.4	..
May	19.6	44.5	20.7	4.8	1.6	1.6	93.0	..
<b>1986-87 P</b>								
March	19.9	8.4	17.6	2.6	0.7	0.8	50.1	-11.7
April	22.8	25.8	19.6	3.2	0.8	1.1	73.4	-22.2
May	18.8	36.7	15.1	3.7	1.0	1.5	76.9	-17.3
<b>11 MONTHS ENDED MAY</b>								
1986	175.4	682.8	203.0	34.1	11.7	31.0	1,139.8	..
1987 P	207.2	621.2	193.1	28.9	11.7	30.9	1,095.9	-3.9
<b>SHEEP-</b>								
<b>YEAR ENDED 30 JUNE</b>								
1984	1,880.3	2,060.9	427.8	1,091.0	2,485.2	418.9	8,371.2	..
1985	2,482.1	3,300.6	376.3	1,639.9	2,292.8	427.3	10,542.9	..
1986	3,124.7	3,863.1	524.7	2,026.4	2,802.3	466.6	12,948.4	..
<b>1985-86</b>								
March	316.4	396.5	56.5	181.8	241.9	52.7	1,254.6	..
April	297.3	375.4	58.9	180.6	205.5	56.6	1,191.3	..
May	252.2	270.4	50.2	125.5	184.0	53.9	955.7	..
<b>1986-87 P</b>								
March	495.4	349.2	74.4	195.4	293.6	57.4	1,476.9	17.7
April	401.7	259.2	77.8	156.6	185.5	64.3	1,166.7	-2.1
May	371.5	190.2	72.1	128.0	131.0	75.9	984.7	3.0
<b>11 MONTHS ENDED MAY</b>								
1986	2,900.0	3,598.1	467.9	1,901.2	2,681.3	434.5	12,104.2	..
1987 P	4,158.1	3,567.1	634.8	2,018.7	2,932.6	470.7	13,969.9	15.4

For footnotes see end of table.

TABLE 1. NUMBERS OF LIVESTOCK SLAUGHTERED - CONTINUED ('000)

	N.S.W.	VIC.	QLD	S.A.	W.A.	TAS.	AUST.	% CHANGE 1986-87 ON 1985-86
<b>LAMBS-</b>								
YEAR ENDED 30 JUNE								
1984	6,231.3	6,206.9	882.2	1,754.1	1,039.8	756.9	17,107.3	..
1985	5,964.2	6,776.7	846.5	1,767.7	1,152.2	683.9	17,478.4	..
1986	6,354.9	7,987.1	857.7	1,829.8	1,085.0	665.7	19,107.5	..
1985-86								
March	531.2	623.8	71.9	155.7	56.8	62.5	1,522.9	..
April	547.0	750.7	75.6	161.4	66.8	52.9	1,682.8	..
May	451.7	689.3	59.9	110.2	98.7	59.8	1,448.7	..
1986-87 P								
March	435.3	609.1	78.3	153.8	73.4	79.3	1,448.9	-4.9
April	449.2	638.9	70.4	136.0	73.7	69.5	1,475.0	-12.4
May	426.1	600.0	80.0	155.8	47.3	57.6	1,389.5	-4.1
11 MONTHS ENDED MAY								
1986	5,964.2	7,376.2	828.1	1,719.6	1,029.3	610.2	17,809.2	..
1987 P	4,756.0	6,991.6	767.1	1,762.5	1,115.1	608.6	16,271.2	-8.6
<b>PIGS-</b>								
YEAR ENDED 30 JUNE								
1984	1,105.7	1,237.1	921.0	550.5	479.5	80.2	4,400.9	..
1985	1,065.1	1,297.6	965.0	589.4	450.6	85.1	4,489.8	..
1986	1,288.5	1,020.0	1,008.8	588.4	462.1	84.4	4,508.8	..
1985-86								
March	105.5	74.8	78.8	50.3	34.7	7.9	356.1	..
April	108.8	73.8	83.0	45.6	45.5	6.1	369.0	..
May	110.5	77.0	89.5	55.9	38.3	8.4	385.2	..
1986-87 P								
March	112.5	77.3	85.3	51.2	40.2	7.0	378.4	6.3
April	114.6	71.0	89.6	43.8	43.7	8.6	378.0	2.5
May	127.5	57.1	94.3	62.9	43.2	7.1	397.3	3.1
11 MONTHS ENDED MAY								
1986	1,175.6	941.6	923.8	533.6	423.8	78.5	4,128.6	..
1987 P	1,296.1	770.4	955.2	592.5	460.5	80.7	4,218.1	2.2

(A) Domesticated Buffaloes slaughtered in the Northern Territory are included in Australian totals.

TABLE 2. CHICKENS SLAUGHTERED ('000)

	N.S.W.	VIC.	QLD	S.A.	W.A.	TAS.	AUST.	% CHANGE 1986-87 ON 1985-86
<b>CHICKENS (A)-</b>								
YEAR ENDED 30 JUNE								
1984	83,691.1	46,061.4	33,613.7	28,541.7	20,700.2	3,634.2	216,242.2	..
1985	92,352.5	55,994.8	36,803.8	30,951.9	24,107.2	4,034.4	244,244.6	..
1986	95,781.1	61,643.9	41,708.7	29,159.1	25,687.8	4,354.7	258,335.3	..
1985-86								
March	7,693.3	4,626.4	3,328.1	2,195.6	1,881.8	346.2	20,071.4	..
April	8,617.8	5,325.7	4,034.0	2,569.1	2,304.3	439.0	23,289.8	..
May	7,465.0	5,297.3	3,157.4	2,168.6	2,063.7	339.2	20,491.2	..
1986-87 P								
March	8,854.3	5,205.0	3,768.0	2,308.8	2,073.0	344.0	22,553.1	12.4
April	9,191.6	5,207.6	4,297.7	2,679.1	2,539.7	416.7	24,332.4	4.5
May	8,546.7	5,020.9	3,657.2	2,187.3	2,133.0	338.7	21,883.7	6.8
11 MONTHS ENDED MAY								
1986	88,272.9	56,633.9	38,332.0	27,048.0	23,592.8	4,035.9	237,915.4	..
1987 P	91,628.7	60,568.1	42,750.3	28,210.9	24,022.3	4,195.8	249,374.3	4.8

(A) Comprises broilers, fryers and roasters. Australian totals exclude the Northern Territory and the Australian Capital Territory. NOTE - Some slaughtering statistics on "Ducks and Drakes" and "Other Fowls and Turkeys" are available on request by contacting the ABS on Canberra 525337 or by writing to PO Box 10 Belconnen A.C.T. 2616.

TABLE 3. CHICKEN MEAT PRODUCED (A)  
(TONNES CARCASS WEIGHT)

	N.S.W.	VIC.	QLD	S.A.	W.A.	TAS.	AUST.	% CHANGE 1986-87 ON 1985-86
<b>CHICKEN (B)-</b>								
YEAR ENDED 30 JUNE								
1984	107,273	61,503	41,512	33,549	23,894	4,292	272,023	..
1985	126,263	75,078	45,632	35,882	27,744	4,697	315,296	..
1986	128,407	84,434	51,870	34,235	29,903	4,928	333,777	..
1985-86								
March	10,417	6,183	4,141	2,533	2,214	385	25,873	..
April	11,518	6,317	5,014	2,958	2,642	502	28,950	..
May	10,112	7,168	3,946	2,540	2,446	384	26,597	..
1986-87 P								
March	12,073	7,199	4,611	2,739	2,462	384	29,468	13.9
April	13,018	7,666	5,375	3,199	2,889	478	32,622	12.7
May	11,635	6,809	4,596	2,602	2,366	383	28,950	7.5
11 MONTHS ENDED MAY								
1986	118,275	77,441	47,580	31,767	27,359	4,572	306,994	..
1987 P	121,434	81,834	51,589	31,005	27,956	4,836	318,635	3.8

(A) Chicken meat is shown in dressed weight of whole birds, pieces and giblets.

(B) Australian totals exclude the Northern Territory and Australian Capital Territory.

NOTE - Some meat production statistics for "Ducks and Drakes" and "Other Fowls and Turkeys" are available on request by contacting the ABS on Canberra 525337 or by writing to PO Box 10 Belconnen A.C.T. 2616.

TABLE 4. RED MEAT PRODUCED (A)  
(TONNES CARCASS WEIGHT)

	AUSTRALIA						% CHANGE 1986-87 ON 1985-86	SEASONALLY ADJUSTED
	N.S.W.	VIC.	QLD	S.A.	W.A.	TAS.		
<b>BEEF (B)-</b>								
<b>YEAR ENDED 30 JUNE</b>								
1984								
1985	280,615	245,797	532,511	81,172	96,464	31,376	1,303,230	..
1986	262,482	237,827	515,565	79,115	100,396	30,821	1,270,553	..
1985-86	309,587	276,523	531,699	77,808	89,930	30,863	1,344,964	..
March	26,922	23,917	47,644	6,515	5,404	3,360	114,609	..
April	31,238	24,203	40,616	6,192	7,985	3,141	110,364	13.9
May	28,834	22,733	50,407	4,614	8,219	3,149	121,530	..
1986-87 P								
March	35,629	27,659	49,001	6,481	7,985	3,141	130,364	13.9
April	32,416	25,954	54,447	5,669	6,360	3,638	130,772	13.9
May	31,584	22,861	56,291	6,761	7,679	4,213	132,228	8.8
11 MONTHS ENDED MAY								
1986	285,761	254,448	480,402	72,841	82,661	28,055	1,228,236	..
1987 P	326,086	273,451	529,127	75,050	86,221	33,775	1,347,698	9.7
<b>VEAL-</b>								
<b>YEAR ENDED 30 JUNE</b>								
1984								
1985	8,116	19,370	10,245	2,055	1,173	961	42,047	..
1986	7,824	17,744	10,348	1,841	987	880	39,467	..
1985-86	9,537	17,179	10,809	1,414	841	914	40,840	..
March	942	438	926	109	44	50	2,522	..
April	1,309	1,401	1,209	134	59	21	4,150	..
May	1,051	1,114	948	155	98	148	3,507	..
1986-87 P								
March	1,122	109	850	104	48	103	2,340	-7.2
April	1,320	514	927	101	51	122	3,045	-2.6
May	1,117	791	718	123	65	176	3,005	-14.3
11 MONTHS ENDED MAY								
1986	8,645	15,465	9,939	1,265	759	800	36,995	..
1987 P	10,586	12,741	8,985	1,108	782	1,297	35,701	-3.5
<b>MUTTON-</b>								
<b>YEAR ENDED 30 JUNE</b>								
1984								
1985	38,912	44,845	8,818	23,758	44,464	8,178	169,124	..
1986	49,504	69,197	7,522	35,800	44,287	8,297	214,738	..
1985-86	62,579	78,997	10,602	41,506	52,018	9,382	257,943	..
March	6,372	8,155	1,081	3,685	4,367	1,074	24,932	..
April	5,963	7,415	1,180	3,606	3,756	1,143	23,629	..
May	4,860	5,280	969	2,566	3,364	1,079	18,440	..
1986-87 P								
March	9,419	7,052	1,414	3,988	5,324	1,130	28,621	14.8
April	7,726	5,224	1,521	3,240	3,348	1,234	22,646	-4.2
May	7,177	3,609	1,355	2,659	2,340	1,374	18,869	2.3
11 MONTHS ENDED MAY								
1986	58,194	73,806	9,475	39,058	49,836	8,754	261,634	..
1987 P	81,862	71,711	12,369	41,832	53,147	9,295	273,832	13.3
<b>LAMB-</b>								
<b>YEAR ENDED 30 JUNE</b>								
1984								
1985	111,367	107,828	14,665	31,114	15,035	11,746	295,880	..
1986	103,078	100,844	14,617	30,136	16,986	10,701	300,754	..
1985-86	108,868	136,396	16,676	31,485	15,658	10,298	320,309	..
March	9,135	10,343	1,200	2,750	849	966	25,802	..
April	9,905	12,458	1,592	2,768	998	829	27,795	..
May	7,360	11,628	919	1,856	859	935	23,865	..
1986-87 P								
March	7,212	10,883	1,229	2,702	1,079	1,230	24,654	-4.5
April	7,571	11,243	1,257	2,440	983	1,089	25,039	-9.9
May	7,198	10,811	1,270	2,717	682	923	23,962	0.4
11 MONTHS ENDED MAY								
1986	102,587	124,166	13,736	29,660	14,827	9,437	299,062	..
1987 P	79,470	120,432	12,236	30,231	16,073	9,482	272,486	-8.9
<b>PIGMEAT-</b>								
<b>YEAR ENDED 30 JUNE</b>								
1984								
1985	59,149	69,487	37,164	34,740	26,876	4,319	253,279	..
1986	38,686	72,667	60,851	24,604	24,508	4,752	260,320	..
1985-86	75,502	57,823	63,724	37,432	25,967	6,465	268,327	..
March	6,568	4,233	4,933	3,190	1,942	429	21,330	..
April	6,544	4,101	5,171	2,921	2,540	336	21,987	..
May	6,615	4,270	5,670	3,634	2,561	465	23,192	..
1986-87 P								
March	6,838	4,288	5,155	3,271	2,257	428	22,530	5.6
April	6,868	3,964	5,613	2,792	2,473	515	22,623	2.9
May	7,845	3,135	5,953	4,055	2,491	439	24,232	4.5
11 MONTHS ENDED MAY								
1986	68,590	53,451	58,296	33,846	23,744	4,337	245,356	..
1987 P	77,892	42,834	59,021	37,499	25,721	4,798	251,486	2.5
<b>TOTAL RED MEAT-</b>								
<b>YEAR ENDED 30 JUNE</b>								
1984								
1985	498,158	487,327	623,403	172,839	184,012	56,580	2,063,519	..
1986	481,632	538,279	606,322	183,116	187,259	55,451	2,085,832	..
1985-86	565,873	564,917	631,509	189,735	184,414	56,102	2,231,683	..
March	49,738	47,288	55,786	16,249	12,606	5,879	189,195	..
April	54,148	49,778	69,368	15,623	12,933	5,808	211,332	..
May	48,720	45,024	58,912	12,745	14,721	5,777	190,534	..
1986-87 P								
March	60,230	49,991	57,650	16,346	16,694	6,033	208,710	10.3
April	55,901	44,899	63,745	14,241	13,212	6,597	204,125	-3.4
May	54,921	41,206	65,586	16,313	13,277	7,133	202,297	6.2
11 MONTHS ENDED MAY								
1986	523,787	521,336	571,849	176,470	171,827	51,384	2,051,283	..
1987 P	575,876	521,219	621,739	185,720	181,945	58,647	2,181,182	6.3

(A) Red meat is shown in carcass weight and excludes offal.  
(B) Buffalo meat produced in the Northern Territory is included in Australian totals.

## RED MEAT PRODUCTION AUSTRALIA ('000 TONNES)

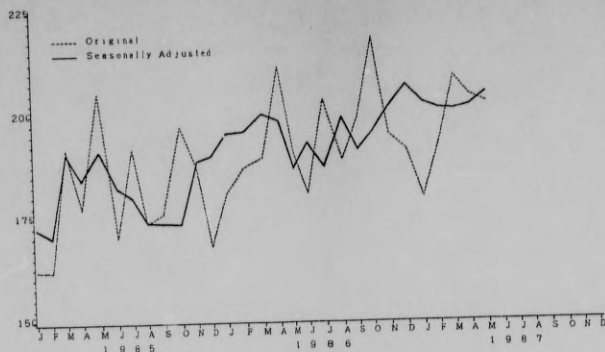


TABLE 5. EXPORTS OF FRESH, FROZEN AND PROCESSED MEAT(a), AUSTRALIA (tonnes)

Year ended 30 June—	Fresh, chilled or frozen										Pork	Bacon and ham(d)	Canned meat	
	Beef(b)(c)		Veal(b)		Mutton(b)		Lamb(b)		Pork	Bacon and ham(d)				Canned meat
	Bone-in	Bone-out	Bone-in	Bone-out	Bone-in	Bone-out	Bone-in	Bone-out						
1984	28,704	419,396	1,204	2,281	26,504	32,131	30,189	1,506	1,956	592	12,707			
1985	10,501	395,803	1,623	3,617	21,612	38,129	26,344	1,374	3,241	316	12,887			
1986	4,838	466,336	2,174	3,682	38,026	51,788	47,755	2,072	2,774	173	14,716			
1985-86—														
February	149	32,069	124	217	2,340	5,669	6,761	211	54	13	827			
March	336	36,391	77	209	2,548	5,785	4,607	125	149	6	803			
April	608	42,573	129	401	2,125	5,161	4,293	174	53	7	951			
1986-87 p—														
February	265	35,983	160	149	3,394	5,930	4,487	87	162	141	435			
March	442	46,402	62	156	8,278	7,310	5,023	82	254	7	759			
April	413	43,945	61	164	2,061	5,253	4,669	124	157	91	1,319			

(a) Excludes offal. (b) Factors can be applied to beef, veal, mutton and lamb bone-out figures to derive bone-in carcass weight which, when added to bone-in figures, shows total exports in carcass weight. The factor for beef and veal is 1.5 and that for mutton and lamb 2.0 (Source: Australian Meat and Livestock Corporation). (c) Includes buffalo meat. (d) Cured carcass weight of smoked or cooked bacon and ham. Includes stated net weight of packs of canned bacon and ham. (e) Canned weight. Excludes canned bacon and ham.

TABLE 6. STOCKS OF FROZEN MEAT(a), AUSTRALIA (Source: Australian Meat and Livestock Corporation) (tonnes)

Stocks at	Beef(b) and veal	Mutton	Lamb	Pork	Goat	Offal	Total
26 April 1986	36,903	7,965	4,350	2,592	760	8,245	60,815
25 April 1987	39,130	8,511	4,294	1,848	905	8,788	63,476

(a) Held in cold stores registered to handle meat for export, and includes meat passed for (i) export, (ii) canning and (iii) other purposes. Includes boneless and carcass meat. (b) Includes buffalo meat.

TABLE 7. PRODUCTION OF BACON AND HAM(a)(b) (tonnes)

Year ended 30 June—	N. S. W.		Vic.		Qld		S. A.		W. A.		Tas.		Aust.	
	Bone-in	Bone-out	Bone-in	Bone-out	Bone-in	Bone-out	Bone-in	Bone-out	Bone-in	Bone-out	Bone-in	Bone-out	Bone-in	Bone-out
1984	4,167	11,038	3,982	18,483	7,042	13,055	2,203	9,676	634	6,174	327	1,370	18,355	59,796
1985	3,637	10,613	4,679	20,013	4,956	13,513	2,988	8,543	1,003	6,830	373	1,617	17,638	61,136
1986	3,657	10,512	4,624	20,821	6,466	11,220	2,104	8,383	919	7,255	306	1,845	18,077	60,039
1985-86—														
February	201	829	288	1,916	447	982	57	667	29	567	6	153	1,029	5,113
March	254	857	324	1,612	590	921	45	775	37	590	10	172	1,261	4,928
April	190	846	271	1,481	463	957	25	742	44	675	5	134	999	4,835
1986-87—														
February	94	1,230	217	1,179	285	1,289	27	856	20	612	5	143	648	5,308
March	108	1,178	233	1,318	411	1,497	200	809	26	614	8	149	987	5,565

(a) Production of bacon and ham on the bone is shown in terms of bone-in weight while production of boneless bacon and ham is shown in terms of bone-out weight. Production of canned bacon and ham, which is shown in terms of stated net weight of packs, is included in the bone-out category. (b) Excludes the production by single establishment manufacturing enterprises employing less than four persons and establishments predominantly engaged in non-manufacturing activities, but which may carry on some manufacturing activity.

6  
II. MILK

TABLE 8. WHOLE MILK INTAKE BY FACTORIES (A)  
(SOURCE: AUSTRALIAN DAIRY CORPORATION)  
(MILLION LITRES)

	N.S.W.	VIC.	QLD	S.A.	W.A.	TAS.	AUST.	SEASONALLY ADJUSTED
YEAR ENDED 30 JUNE								
1984	940	3,400	629	385	232	340	5,923	..
1985	940	3,516	621	372	243	346	6,038	..
1986	904	3,575	600	365	243	351	6,038	..
1985-86								
February	70	276	46	21	15	34	462	526
March	71	228	47	20	17	28	411	539
April	83	150	42	21	17	19	312	504
May	65	117	44	23	18	14	283	495
June	65	113	45	29	20	9	281	505
1986-87 P								
July	68	159	45	32	22	9	335	486
August	72	283	50	36	22	18	481	480
September	74	417	52	39	24	33	639	483
October	87	507	55	43	25	48	765	485
November	84	489	56	39	23	49	740	495
December	84	442	56	34	20	44	680	501
January	81	390	57	30	18	43	619	532
February	69	283	50	21	18	32	473	538
March	75	252	50	21	17	27	442	579
April	69	191	44	23	17	23	367	593
10 MONTHS ENDED APRIL								
1986	774	3,345	511	311	205	328	5,474	..
1987 P	763	3,413	515	318	206	326	5,541	..

(A) Includes the whole milk equivalent of farm cream intake.

WHOLE MILK INTAKE BY FACTORIES AUSTRALIA (MILLION LITRES)

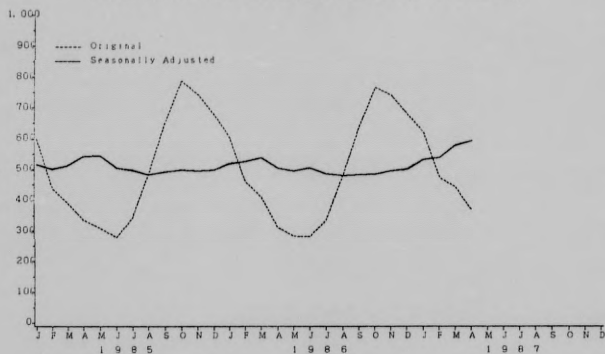


TABLE 9. MARKET MILK SALES BY FACTORIES (A)  
(SOURCE: AUSTRALIAN DAIRY CORPORATION)  
(MILLION LITRES)

	N.S.W.	VIC.	QLD	S.A.	W.A.	TAS.	AUST.
YEAR ENDED 30 JUNE							
1984	550	441	274	138	127	43	1,572
1985	559	441	280	140	129	44	1,593
1986	579	441	287	142	132	44	1,625
1985-86							
February	45	35	23	11	10	3	128
March	51	37	24	12	11	4	140
April	49	38	24	12	11	4	139
May	50	38	25	13	12	4	142
June	49	38	23	12	11	4	136
1986-87 P							
July	50	39	25	12	12	4	142
August	50	36	25	12	11	4	138
September	48	37	24	12	11	4	136
October	49	39	25	12	12	4	141
November	48	35	23	12	11	4	132
December	49	36	25	12	11	4	136
January	51	36	25	12	12	4	139
February	47	34	23	10	11	3	129
March	52	38	25	11	12	4	142
April	50	37	24	11	11	4	138
10 MONTHS ENDED APRIL							
1986	479	365	239	118	109	37	1,348
1987 P	494	369	245	117	112	37	1,374

(A) Includes white, flavoured, high and low fat milk, wht milk.

TABLE 10. BROKERS AND DEALERS RECEIVALS OF TAXABLE WOOL (TONNES)

YEAR ENDED 30 JUNE	AUSTRALIA						TOTAL	% OF TOTAL RECEIVED BY BROKERS (A)	SEASONALLY ADJUSTED
	N.S.W.	VIC.	QLD	S.A.	W.A.	TAS.			
1984	180,020	196,402	86,045	84,709	131,646	19,601	688,423	77.8	..
1985	196,376	209,343	66,107	95,303	165,165	19,786	732,022	78.2	..
1986	198,928	209,647	63,341	102,330	171,500	20,994	766,741	78.1	..
1985-86	14,026	10,990	4,496	5,441	10,875	1,767	47,616	75.8	69,211
February	12,408	10,128	5,674	6,437	11,267	803	46,516	75.6	63,867
March	15,083	8,550	6,211	5,961	11,497	974	48,276	76.5	72,394
April	11,657	7,484	5,403	3,741	6,894	2,159	37,337	77.9	67,948
May	12,360	6,818	5,564	3,137	4,324	703	32,907	76.8	77,227
June									
1986-87 P	15,023	11,690	7,396	8,003	10,392	1,396	51,900	79.5	64,468
July	19,793	24,326	7,855	14,018	23,620	1,935	91,747	82.1	73,097
August	26,109	31,983	8,428	17,388	30,791	2,394	117,094	79.2	63,604
September	25,865	38,382	6,824	18,013	31,607	2,273	132,824	77.1	62,102
October	22,284	37,166	3,593	10,970	22,042	3,513	99,566	76.5	67,984
November	16,444	27,629	3,558	6,098	9,925	2,091	65,746	74.6	65,902
December	10,526	16,529	3,324	3,142	6,984	1,885	42,387	67.3	69,890
January	12,623	15,617	4,120	5,077	11,699	1,677	46,813	75.0	67,710
February	13,739	11,934	7,205	7,713	13,463	939	34,990	76.1	71,174
March	11,663	10,128	6,760	6,654	8,951	1,323	45,479	77.1	75,655
April									
10 MONTHS ENDED APRIL	174,912	195,345	52,374	95,452	160,282	18,133	696,497	78.2	..
1986	174,070	221,583	58,863	95,076	169,334	19,421	738,547	77.2	..
1987 P									

(A) Members of the National Council of Wool Selling Brokers of Australia.

BROKERS AND DEALERS RECEIVALS OF TAXABLE WOOL AUSTRALIA ('000 TONNES)

