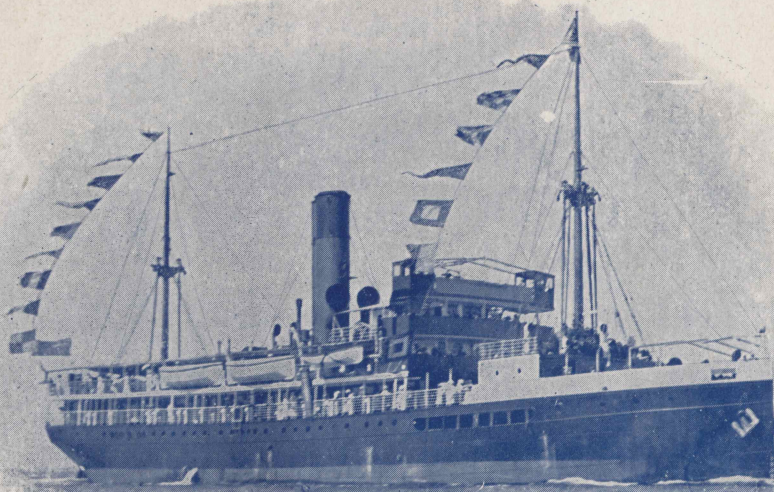


. . The . .

Adelaide Steamship Company, Limited.



S.S. Morialta, 1848 Tons.

THE GULF and WEST COAST TRIPS,

. . . including Kangaroo Island per S.S. Morialta and Paringa. . . .

IT is curious how comparatively few persons appreciate the beauties of the country in which they reside, and in the matter of holiday attractions always deem it necessary to go far afield. What better holiday, it may well be asked, can be wanted than "The Gulf Trip" and "West Coast Trip," which The Adelaide Steamship Company is doing so much to popularise? In the splendid up-to-date steamers now available, such as the "Morialta," "Rupara," and "Paringa," passengers may make the Trip in luxurious fashion. The menu provided is equal to that of the mail steamers or best hotels, the accommodation excellent, and the stoppage at the various ports en route precludes any possibility of the trip becoming monotonous. The fact of comparatively smooth water strongly appeals to those who suffer from mal-de-mer and do not care for a voyage on the open seas.

Briefly, these trips may be summed up as health-giving, pleasurable, and educational, and a unique opportunity for the man of business or country pursuits, who is feeling run down from over attention to his business, to recuperate in a pleasurable manner.

First-class Round Gulf Trip, Fare £3, . . or . . To Port Lincoln only, £1 10/- return.

A Five Days' Pleasurable Sea Trip . . . or . . . A Shorter Trip to Port Lincoln.

KANGAROO ISLAND.

SPECIAL Steamship Service twice a week between Kangaroo Island and Port Adelaide by the splendid steamers "Morialta," 1848 tons, and "Paringa," 1310 tons, both vessels of the most modern type with Hot and Cold Sea Water Baths, Electric Light and Cooling Fans, Dining Saloon on Deck.

As the s.s. "Paringa" extends to West Coast ports and calls at Edithburgh, and the s.s. "Morialta" to Gulf ports, a direct service will thus be established between these ports and Kangaroo Island, affording an additional outlet for Kangaroo Island produce and direct passage service.

Messrs. Strawbridge & Co., Agents, Kingscote, Kangaroo Island.

THE ADELAIDE STEAMSHIP CO., LTD.,

Currie Street, Adelaide.