

## THE LABOUR FORCE, VICTORIA, MARCH 1987

## INQUIRIES

Inquiries concerning these statistics may be made by telephoning Information Services (Labour force statistics) on Melbourne (03) 653 0181; for advice on the interpretation of these statistics contact Vince Lazzaro on Melbourne (03) 62 1846.

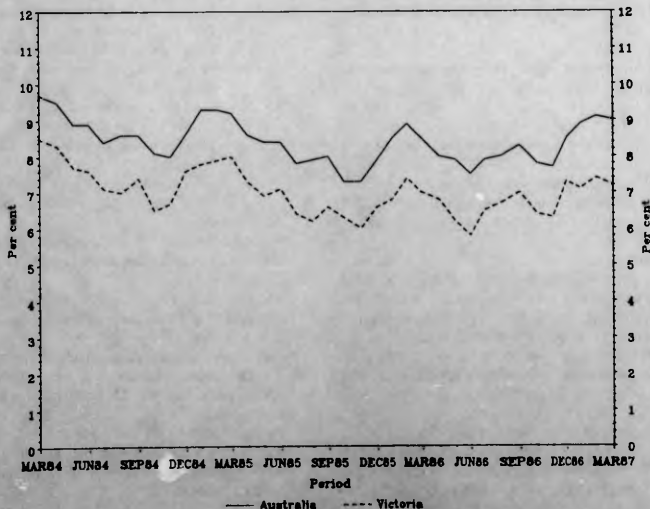
## MAIN FEATURES

In March 1987 there were an estimated 2,078,700 persons in the labour force in Victoria of whom 1,928,500 were employed and 150,300 unemployed, compared with an estimated 1,179,200 persons aged 15 and over who were not in the labour force. The labour force participation rate was 63.8 per cent for persons, 77.0 per cent for males, and 51.1 per cent for females.

Victoria's unemployment rate was 7.2 per cent for March 1987. The unemployment rate for Australia for the same period was 9.0 per cent and for Victoria 12 months previously (March 1986) was 7.0 per cent. In March 1987 Victoria's unemployment rate was 6.0 per cent for males and 9.0 per cent for females.

The median duration of unemployment in Victoria for March 1987 was 13.0 weeks for persons, 16.0 weeks for males, and 10.0 weeks for females.

## UNEMPLOYMENT RATES, VICTORIA AND AUSTRALIA



## EXPLANATORY NOTES

**Introduction**

This publication contains Victorian labour force estimates derived from the Monthly Population Survey conducted throughout Australia by the Australian Bureau of Statistics. Labour force estimates for employed persons classified by industry and occupation are available quarterly (i.e. each February, May, August, and November) in *The Labour Force, Victorian Regions* (6202.2).

2. Commencing with the April 1986 labour force survey, the definition of employment has been extended to include all persons who worked without pay for one hour or more in a family business or on a farm (i.e. unpaid family helpers). This results from changes to international standard definitions by the International Labour Organisation (ILO). Previously, such persons who worked 1 to 14 hours or who had such a job but were not at work were defined as either unemployed or not in the labour force, depending on whether they were actively looking for work. The changes in definition have resulted in employment for March 1986 increasing by 8,300. More details about this change, together with other changes made to the questionnaire, are contained in *The Labour Force, Australia, April 1986* (6203.0) and in an information paper *Questionnaires used in the Labour Force Survey* (6232.0).

**Conduct of the ABS Monthly Population Survey**

3. The survey is based on a multi-stage area sample of private dwellings (houses, flats, etc.) and non-private dwellings (hotels, motels, etc.) and covers about one-half of one per cent of the Victorian population.

**Scope of survey**

4. All persons aged 15 years and over are included in the survey except:

- (a) members of the permanent defence forces;
- (b) certain diplomatic personnel of overseas governments;
- (c) overseas visitors holidaying in Australia; and
- (d) members of non-Australian defence forces (and their dependants) stationed in Australia.

**Definitions**

5. The labour force category to which a person is assigned depends on his or her actual activity (i.e. whether working, looking for work, etc.) during the survey week. The definitions conform closely to the standard definitions recommended by the ILO. *Employed persons* comprise all those aged 15 years and over who, during the survey week:

- (a) worked for one hour or more for pay, profit, commission, or payment in kind in a job or business, or on a farm (including employees, employers, and self-employed persons); or

- (b) worked for one hour or more without pay in a family business or on a farm (i.e. unpaid family helper); or
- (c) were employees who had a job but were not at work and were:
  - (i) on paid leave;
  - (ii) on leave without pay for less than four weeks up to the end of the survey week;
  - (iii) stood down without pay because of bad weather or plant breakdown at their place of employment for less than four weeks, up to the end of the survey week;
  - (iv) on strike or locked out;
  - (v) on workers' compensation and expected to be returning to their job; or
  - (vi) receiving wages or salary while undertaking full-time study; or
- (d) were employers, self-employed persons or unpaid family helpers who had a job, business, or farm, but were not at work.

*Unemployed persons* are those aged 15 years and over who were not employed during the survey week and:

- (a) had actively looked for full-time or part-time work at any time in the four weeks up to the end of the survey week and were:
  - (i) available for work in the survey week, or would have been available except for temporary illness (i.e. lasting for less than four weeks); or
  - (ii) waiting to start a new job within four weeks from the end of the survey week and would have started in the survey week if the job had been available then; or
- (b) were waiting to be called back to a full-time or part-time job from which they had been stood down without pay for less than four weeks up to the end of the survey week (including the whole survey week) for reasons other than bad weather or plant breakdown.

The *labour force* comprises all persons who, during the survey week, were employed or unemployed, as defined above.

The *unemployment rate* is the number of unemployed in each group as a percentage of the labour force in the same group.

The *participation rate* is the labour force in each group as a percentage of the civilian population aged 15 years and over in the same group.

*Full-time workers* are those who usually work 35 hours a week or more and others who, although usually part-time workers, worked 35 hours or more during the survey week.

*Part-time workers* are those who usually work less than 35 hours a week and who did so during the survey week. When recording hours of work, fractions of an hour are disregarded.

*Persons not in the labour force* are those who, during the survey week, were not in the categories 'employed' or 'unemployed'.

*Marital status.* In the labour force survey, persons are classified as *married* (including *de facto*) or *not married*. Marital status is determined from information supplied by the respondent about the individual himself or herself and, where the person was reported as being married, about the living arrangements of persons usually resident in the household.

*A family* is defined as consisting of two or more related persons usually resident in the same household at the time of the survey. A family can contain no more than two married persons and can contain two married persons only if these persons are husband and wife.

*Hours of work.* The figures of aggregate hours and average hours refer to actual hours worked during the survey week, not hours paid for.

*Average (mean) duration of unemployment* is the duration obtained by dividing the aggregate number of weeks a group has been unemployed by the number of persons in that group.

*Median duration of unemployment* is the duration which divides unemployed persons into two equal groups, one comprising persons whose duration of unemployment is above the median, and the other, persons whose duration is below it.

#### Revision of series

6. Survey estimates are not revised for the usually small amendments of population benchmarks arising from new data on deaths and overseas and internal migration. Revisions are made, however, after each Census of Population and Housing, and when population estimation bases are reviewed.

#### Reliability of estimates

7. Since the estimates in this publication are based on information obtained from occupants of a sample of dwellings they, and the movements derived from them, may differ from the figures that would have been produced if all dwellings had been included in the survey. One measure of the likely difference is given by the standard error of an estimate. There are about two chances in three that a sample estimate will differ by less than one standard error from the figure that would have been obtained if all dwellings had been included in the survey, and about nineteen chances in twenty that the difference will be less than two standard errors. Standard errors of survey estimates and month to month movements are shown in Tables A and B at

the end of this publication. An explanation of standard errors and their use can be found in Section 4.5 of *Information Paper: Victorian Labour Force Statistics (6262.2)*.

#### Related publications

8. Users may also wish to refer to the following ABS publications, which are available on request:

*The Labour Force, Australia, Preliminary (6202.0)* (monthly)

*The Labour Force, Victorian Regions (6202.2)* (quarterly)

*The Labour Force, Australia (6203.0)* (monthly)

*The Labour Force, Australia (6204.0)* (annual)  
*Information Paper: Questionnaires Used In The Labour Force Survey (6232.0)*

*Information Paper: Victorian Labour Force Statistics (6262.2)*

9. Current publications produced by the ABS are listed in the *Catalogue of Publications, Australia (1101.0)* which is available free of charge from any ABS Office.

10. Other unpublished data from labour force surveys on aspects of the Victorian labour force are held by the Victorian Office of the ABS, and may be available on request.

#### Statistics on VIATEL

11. Selected economic, social, and population statistics are available on VIATEL \*656#.

#### Symbols and other usages

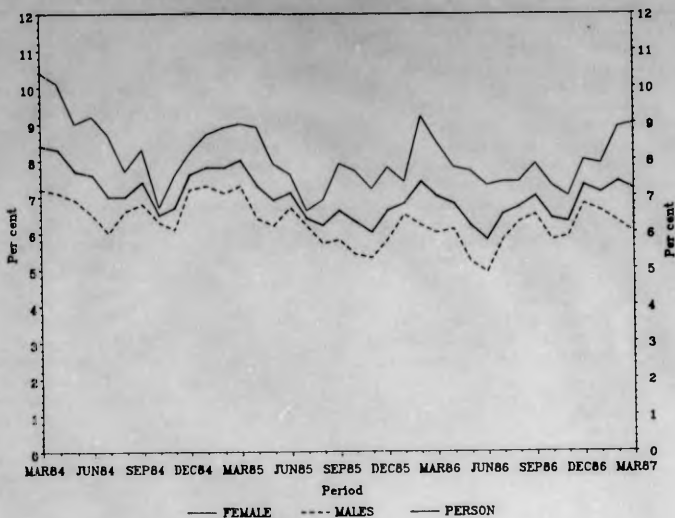
na not available  
.. not applicable  
\* subject to sampling variability too high for most practical purposes

Where figures have been rounded, discrepancies may occur between sums of the component items and totals.

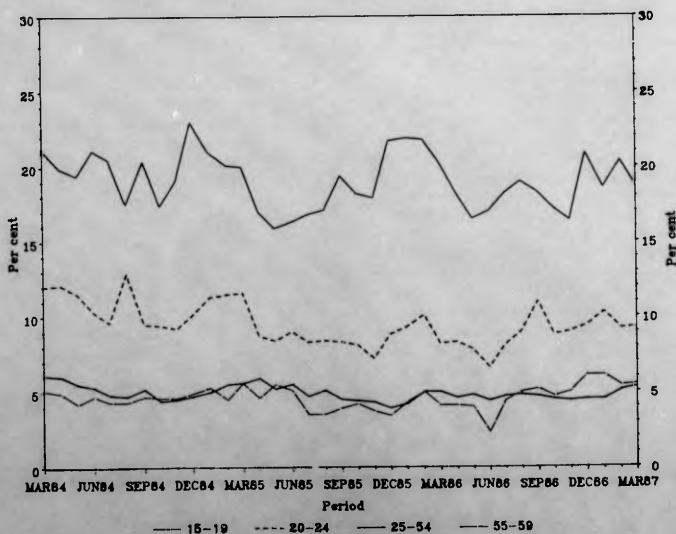
ERLE BOURKE

Deputy Commonwealth Statistician

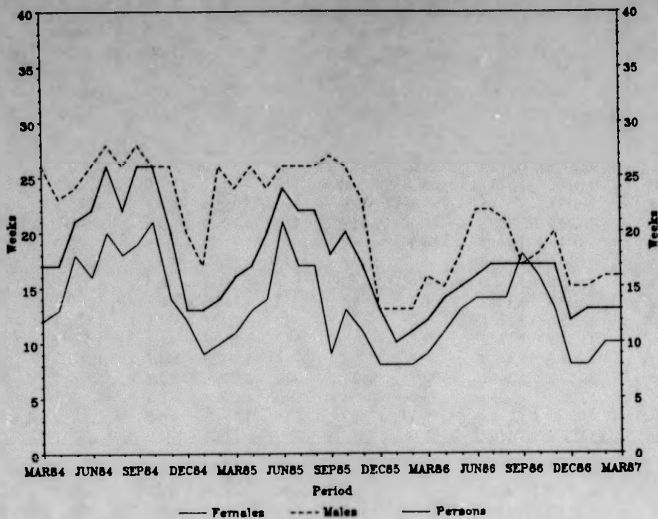
## UNEMPLOYMENT RATES BY SEX, VICTORIA



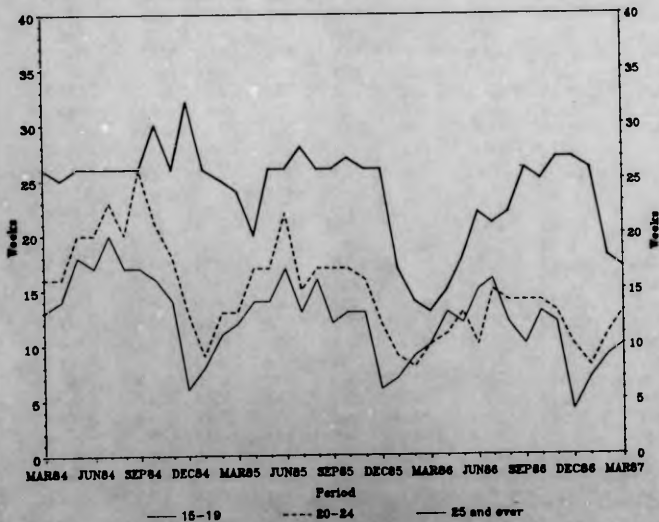
## UNEMPLOYMENT RATES BY AGE, VICTORIA



### MEDIAN DURATION OF UNEMPLOYMENT BY SEX, VICTORIA



### MEDIAN DURATION OF UNEMPLOYMENT BY AGE, VICTORIA



**TABLE 1. CIVILIAN POPULATION AGED 15 YEARS AND OVER BY  
LABOUR FORCE STATUS, VICTORIA**

Month	Employed		Unemployed looking for work			Labour force ( <sup>'000</sup> )	Not in labour force ( <sup>'000</sup> )	Civilian population 15 years and over ( <sup>'000</sup> )	Unemp- loyment rate (%)	Partici- pation rate (%)
	Full- time ( <sup>'000</sup> )	Total ( <sup>'000</sup> )	Full- time ( <sup>'000</sup> )	Part- time ( <sup>'000</sup> )	Total ( <sup>'000</sup> )					
<b>MALES</b>										
1986 - Jan.	1,044.1	1,103.7	64.2	10.1	74.3	1,178.0	383.8	1,561.8	6.3	75.4
Feb.	1,048.9	1,113.7	66.3	6.8	73.0	1,186.7	378.0	1,564.7	6.2	75.8
Mar.	1,043.8	1,121.8	58.2	12.9	71.1	1,192.9	374.7	1,567.5	6.0	76.1
Apr.	1,029.9	1,108.3	60.8	11.2	72.1	1,180.4	389.6	1,570.0	6.1	75.2
May	1,042.5	1,115.5	54.9	6.3	61.2	1,176.7	395.8	1,572.4	5.2	74.8
June	1,050.6	1,123.3	51.0	6.5	57.5	1,180.8	394.1	1,574.9	4.9	75.0
July	1,043.8	1,112.0	62.4	6.3	68.8	1,180.8	396.6	1,577.4	5.8	74.9
Aug.	1,038.6	1,109.1	66.4	8.1	74.5	1,183.6	396.3	1,579.9	6.3	74.9
Sept.	1,055.6	1,130.8	70.7	7.7	78.4	1,209.2	373.1	1,582.4	6.5	76.4
Oct.	1,054.3	1,130.2	62.8	6.4	69.2	1,199.4	385.5	1,584.9	5.8	75.7
Nov.	1,048.8	1,122.4	64.1	6.3	70.4	1,192.8	394.7	1,587.5	5.9	75.1
Dec.	1,063.9	1,143.2	72.3	10.5	82.8	1,226.0	364.2	1,590.1	6.8	77.1
1987 - Jan.	1,052.9	1,125.2	73.0	6.0	79.1	1,204.3	388.3	1,592.6	6.6	75.6
Feb.	1,064.5	1,137.8	69.5	7.2	76.7	1,214.5	380.5	1,595.0	6.3	76.1
Mar.	1,070.7	1,155.7	65.6	8.3	73.9	1,229.6	367.9	1,597.5	6.0	77.0
<b>MARRIED FEMALES</b>										
1986 - Jan.	227.7	402.2	10.1	6.3	16.4	418.6	539.9	958.5	3.9	43.7
Feb.	233.0	426.4	16.0	12.5	28.5	454.9	508.4	963.3	6.3	47.2
Mar.	239.7	444.2	13.5	16.2	29.7	473.9	484.7	958.5	6.3	49.4
Apr.	247.1	451.8	15.2	12.4	27.6	479.4	485.7	965.1	5.8	49.7
May	240.4	445.3	14.9	12.8	27.7	472.9	488.2	961.2	5.9	49.2
June	242.4	451.0	15.5	10.5	26.0	477.0	489.1	966.0	5.5	49.4
July	255.9	464.0	13.3	12.2	25.5	489.5	487.6	977.0	5.2	50.1
Aug.	247.2	446.8	10.7	9.6	20.4	467.1	514.5	981.7	4.4	47.6
Sept.	254.6	467.4	11.6	12.8	24.3	491.8	492.3	984.0	4.9	50.0
Oct.	255.8	463.6	11.5	12.3	23.8	487.4	492.8	980.2	4.9	49.7
Nov.	253.9	465.1	10.8	7.3	18.1	483.2	502.7	985.9	3.7	49.0
Dec.	255.2	468.3	10.5	7.4	17.9	486.2	500.3	986.5	3.7	49.3
1987 - Jan.	248.4	431.8	9.8	6.9	16.6	448.4	530.4	978.8	3.7	45.8
Feb.	247.3	445.4	12.9	11.7	24.6	470.0	501.7	971.7	5.2	48.4
Mar.	253.9	466.8	14.1	16.3	30.3	497.1	472.3	969.4	6.1	51.3
<b>OTHER FEMALES</b>										
1986 - Jan.	236.1	303.9	30.6	7.3	37.9	341.8	325.4	667.3	11.1	51.2
Feb.	227.1	300.6	31.2	11.4	42.6	343.3	321.9	665.2	12.4	51.6
Mar.	229.9	303.1	25.5	13.9	39.4	342.5	330.0	672.6	11.5	50.9
Apr.	223.4	297.0	23.5	12.1	35.6	332.5	335.8	668.4	10.7	49.8
May	222.0	295.6	22.0	12.4	34.4	330.0	344.7	674.7	10.4	48.9
June	216.8	287.0	22.1	9.7	31.8	318.8	353.4	672.2	10.0	47.4
July	213.4	283.3	23.2	10.8	34.0	317.3	346.4	663.8	10.7	47.8
Aug.	216.2	277.8	28.0	9.9	37.8	315.6	345.9	661.5	12.0	47.7
Sept.	215.6	285.5	31.5	8.4	40.0	325.5	336.1	661.6	12.3	49.2
Oct.	221.4	292.9	26.8	8.7	35.5	328.4	339.6	668.0	10.8	49.2
Nov.	219.4	290.1	29.1	9.6	38.7	328.8	336.0	664.8	11.8	49.5
Dec.	222.7	298.4	38.3	10.5	48.8	347.3	319.5	666.8	14.1	52.1
1987 - Jan.	231.3	302.5	38.5	7.8	46.3	348.8	328.1	676.9	13.3	51.5
Feb.	235.8	304.2	37.4	11.3	48.7	352.9	333.5	686.4	13.8	51.4
Mar.	227.4	306.0	35.4	10.6	46.1	352.0	339.0	691.1	13.1	50.9

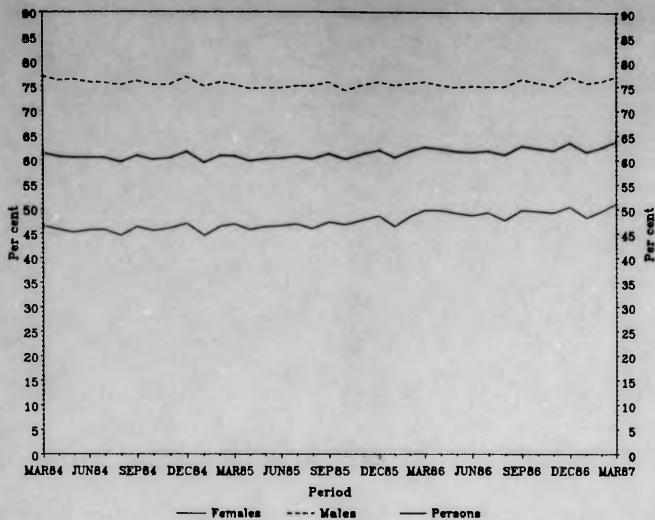
TABLE 1. CIVILIAN POPULATION AGED 15 YEARS AND OVER BY  
LABOUR FORCE STATUS, VICTORIA - *continued*

Month	Employed		Unemployed looking for work			Labour force ( <sup>'000</sup> )	Not in labour force ( <sup>'000</sup> )	Civilian population 15 years and over ( <sup>'000</sup> )	Unem- ployment rate (%)	Partici- pation rate (%)
	Full- time	Total	Full- time	Part- time	Total					
	( <sup>'000</sup> )	( <sup>'000</sup> )	( <sup>'000</sup> )	( <sup>'000</sup> )	( <sup>'000</sup> )					
ALL FEMALES										
1986 - Jan.	463.7	706.1	40.7	13.6	54.3	760.4	865.3	1,625.7	7.1	46.8
Feb.	460.0	727.0	47.2	23.9	71.1	798.2	830.3	1,628.4	8.9	49.0
Mar.	469.6	747.3	39.0	30.1	69.1	816.4	814.7	1,631.1	8.5	50.1
Apr.	470.5	748.8	38.6	24.5	63.1	812.0	821.6	1,633.5	7.8	49.7
May	462.5	740.9	36.9	25.2	62.1	803.0	832.9	1,635.9	7.7	49.1
June	459.2	738.0	37.6	20.2	57.8	795.8	842.5	1,638.3	7.3	48.6
July	469.4	747.3	36.5	22.9	59.5	806.8	834.0	1,640.8	7.4	49.2
Aug.	463.4	724.6	38.7	19.5	58.2	782.7	860.4	1,643.2	7.4	47.6
Sept.	470.2	752.9	43.1	21.2	64.3	817.2	828.3	1,645.6	7.9	49.7
Oct.	477.2	756.4	38.3	21.0	59.3	815.7	832.4	1,648.1	7.3	49.5
Nov.	473.3	755.2	39.8	16.9	56.8	812.0	838.7	1,650.7	7.0	49.2
Dec.	478.0	766.7	48.8	18.0	66.7	833.5	819.8	1,653.2	8.0	50.4
1987 - Jan.	479.7	734.3	48.3	14.6	62.9	797.2	858.4	1,655.7	7.9	48.2
Feb.	483.0	749.6	50.3	23.0	73.3	822.9	835.1	1,658.1	8.9	49.6
Mar.	481.3	772.8	49.5	26.9	76.4	849.1	811.3	1,660.5	9.0	51.1
PERSONS										
1986 - Jan.	1,507.8	1,809.8	104.9	23.7	128.6	1,938.4	1,249.2	3,187.5	6.6	60.8
Feb.	1,508.9	1,840.7	113.5	30.7	144.2	1,984.9	1,208.2	3,193.1	7.3	62.2
Mar.	1,513.3	1,869.1	97.2	43.0	140.2	2,009.3	1,189.4	3,198.6	7.0	62.8
Apr.	1,500.4	1,857.1	99.5	37.4	135.2	1,992.3	1,211.2	3,203.5	6.8	62.2
May	1,505.0	1,856.3	91.8	31.5	123.3	1,979.7	1,228.7	3,208.3	6.2	61.7
June	1,509.7	1,861.3	88.6	26.7	115.3	1,976.6	1,236.6	3,213.1	5.8	61.5
July	1,513.2	1,859.3	99.0	29.3	128.3	1,987.5	1,230.6	3,218.2	6.5	61.8
Aug.	1,502.0	1,833.7	105.1	27.6	132.7	1,966.3	1,256.7	3,223.0	6.7	61.0
Sept.	1,525.9	1,883.8	113.8	28.9	142.7	2,026.5	1,201.5	3,227.9	7.0	62.8
Oct.	1,531.5	1,886.6	101.1	27.4	128.5	2,015.2	1,217.9	3,233.1	6.4	62.3
Nov.	1,522.1	1,877.6	104.0	23.2	127.2	2,004.8	1,233.4	3,238.2	6.3	61.9
Dec.	1,541.9	1,909.9	121.1	28.5	149.5	2,059.4	1,183.9	3,243.4	7.3	63.5
1987 - Jan.	1,532.6	1,859.5	121.4	20.7	142.0	2,001.5	1,246.7	3,248.2	7.1	61.6
Feb.	1,547.5	1,887.4	119.8	30.2	150.0	2,037.4	1,215.7	3,253.1	7.4	62.6
Mar.	1,552.0	1,928.5	115.1	35.1	150.3	2,078.7	1,179.2	3,258.0	7.2	63.8

TABLE 2. CIVILIAN POPULATION AGED 15 YEARS AND OVER BY LABOUR FORCE STATUS AND AGE, VICTORIA, MARCH 1987

Age group (years)	Females				Persons
	Males	Married	Other	Total	
LABOUR FORCE ('000)					
15-17	53.6	*	50.8	50.8	104.4
18-19	62.4	*	51.2	53.3	115.7
Total aged 15-19 years	116.0	*	102.1	104.1	220.1
20-24	162.8	37.6	106.8	144.4	307.3
25-34	325.9	154.1	73.2	227.2	553.1
35-44	286.5	167.1	34.2	201.3	487.8
45-54	192.7	96.5	18.0	114.5	307.2
55-59	79.9	25.6	9.7	35.3	115.2
60-64	44.9	10.5	5.1	15.6	60.6
65 and over	20.8	*	*	6.6	27.5
Total	1,229.6	497.1	352.0	849.1	2,078.7
NOT IN LABOUR FORCE ('000)					
15-17	59.2	*	58.4	58.4	117.6
18-19	10.0	*	14.6	16.6	26.5
Total aged 15-19 years	69.2	*	73.0	74.9	144.1
20-24	15.5	15.0	14.3	29.3	44.8
25-34	12.2	96.5	17.4	114.0	126.2
35-44	13.7	78.1	18.6	96.7	110.4
45-54	21.1	77.3	15.0	92.4	113.5
55-59	21.0	47.7	15.9	63.6	84.6
60-64	47.4	55.3	26.1	81.4	128.8
65 and over	167.7	100.4	158.7	259.1	426.9
Total	367.9	472.3	339.0	811.3	1,179.2
PARTICIPATION RATES (PER CENT)					
15-17	47.5	*	46.6	46.6	47.0
18-19	86.2	*	77.8	76.3	81.4
Total aged 15-19 years	62.6	*	58.3	58.2	60.4
20-24	91.3	71.5	88.2	83.1	87.3
25-34	96.4	61.5	80.8	66.6	81.4
35-44	95.4	68.1	64.8	67.6	81.5
45-54	90.1	55.5	54.5	55.3	73.0
55-59	79.2	34.9	37.9	35.7	57.7
60-64	48.7	15.9	16.5	16.1	32.0
65 and over	11.1	*	*	2.5	6.0
Total	77.0	51.3	50.9	51.1	63.8

## PARTICIPATION RATES BY SEX, VICTORIA



## PARTICIPATION RATES BY AGE, VICTORIA

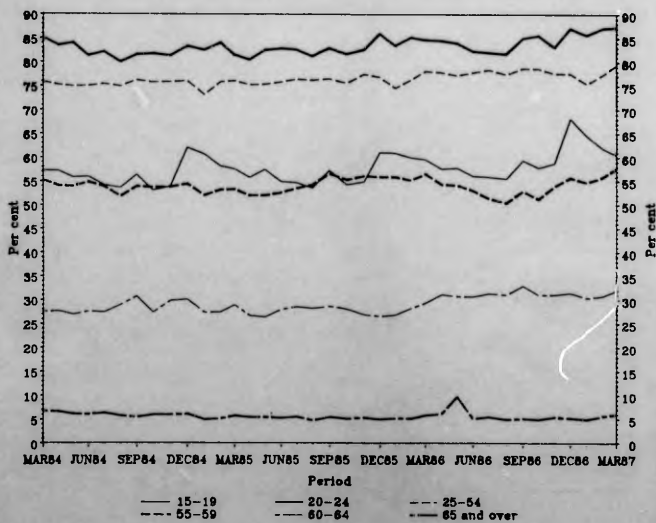


TABLE 3. CIVILIAN POPULATION AGED 15 YEARS AND OVER BY LABOUR FORCE STATUS, BIRTHPLACE, AND PERIOD OF ARRIVAL IN AUSTRALIA, VICTORIA, MARCH 1987

Birthplace particulars	Employed			Unempl- oyed ( '000)	Labour force ( '000)	Not in labour force ( '000)	Unempl- oyment rate (per cent)	Partic- ipation rate(a) (per cent)
	Full-time ( '000)	Part-time ( '000)	Total ( '000)					
MALES								
Born in Australia	752.5	67.3	819.8	50.7	870.4	248.5	5.8	77.8
Born outside Australia -								
Europe - Greece	26.1	*	27.1	*	27.7	9.0	*	75.5
Italy	41.3	*	43.1	*	45.3	18.4	*	71.1
U.K. and Ireland	85.3	5.2	90.5	4.8	95.3	24.2	5.0	79.8
Yugoslavia	20.4	*	21.0	*	23.1	6.5	*	77.9
Other Europe	64.7	*	68.6	*	71.2	24.6	*	74.3
Total Europe	237.6	12.6	250.3	12.3	262.5	82.7	4.7	76.0
New Zealand	9.9	*	10.6	*	10.8	*	*	92.7
Other countries	70.6	4.5	75.1	10.7	85.8	22.2	12.5	79.4
Main English-speaking countries (b)	101.5	6.0	107.5	6.0	113.6	27.3	5.3	80.6
Other	216.7	11.7	228.4	17.2	245.6	78.5	7.0	75.8
Period of arrival -								
Before 1961	105.4	7.5	112.9	*	116.0	58.3	*	66.5
1961 to 1965	43.3	*	44.9	*	46.9	11.4	*	80.4
1966 to 1970	60.1	*	63.7	4.8	68.6	9.2	7.1	88.2
1971 to 1975	40.0	*	42.6	*	46.3	8.5	*	84.4
1976 to 1980	30.2	*	31.2	*	33.6	6.6	*	83.6
1981 to survey date	39.2	*	40.6	7.2	47.8	11.8	15.1	80.2
Total overseas born	318.2	17.8	335.9	23.2	359.2	105.8	6.5	77.2
FEMALES								
Born in Australia	342.8	223.6	566.4	55.5	622.0	552.8	8.9	52.9
Born outside Australia -								
Europe - Greece	11.6	4.9	16.5	*	17.5	18.1	*	49.2
Italy	11.8	8.0	19.8	*	21.9	33.2	*	39.7
U.K. and Ireland	37.1	26.9	64.0	5.6	69.6	59.4	8.1	54.0
Yugoslavia	9.5	*	11.0	*	12.5	11.0	*	53.1
Other Europe	21.3	14.8	36.1	*	39.2	53.0	*	42.5
Total Europe	91.3	56.2	147.4	13.3	160.7	174.8	8.3	47.9
New Zealand	5.7	*	7.7	*	8.4	5.9	*	58.8
Other countries	41.6	9.6	51.2	6.8	58.1	46.6	11.8	55.5
Main English-speaking countries (b)	46.4	30.9	77.3	7.1	84.4	69.7	8.5	54.8
Other	92.1	36.9	129.1	13.7	142.7	157.6	9.6	47.5
Period of arrival -								
Before 1961	29.4	23.5	52.9	*	56.2	104.6	*	35.0
1961 to 1965	19.1	13.1	32.2	*	33.9	28.5	*	54.3
1966 to 1970	28.4	12.6	41.0	4.2	45.2	28.0	9.3	61.7
1971 to 1975	21.7	9.3	31.0	*	34.5	23.6	*	59.4
1976 to 1980	17.4	4.2	21.6	*	23.7	14.5	*	62.0
1981 to survey date	22.5	5.2	27.7	6.0	33.7	28.1	17.8	54.5
Total overseas born	138.5	67.8	206.3	20.8	227.2	227.3	9.2	50.0

TABLE 3. CIVILIAN POPULATION AGED 15 YEARS AND OVER BY LABOUR FORCE STATUS, BIRTHPLACE, AND PERIOD OF ARRIVAL IN AUSTRALIA, VICTORIA, MARCH 1987 - continued

Birthplace particulars	Employed			Unempl- oyed ( '000)	Labour force ( '000)	Not in labour force ( '000)	Unempl- oyment rate (per cent)	Partic- ipation rate(a) (per cent)
	Full-time ( '000)	Part-time ( '000)	Total ( '000)					
PERSONS								
Born in Australia	1,095.3	290.9	1,386.2	106.2	1,492.4	801.3	7.1	65.1
Born outside Australia -								
Africa	20.2	*	22.5	*	24.2	11.4	*	68.0
America	9.4	*	11.3	*	13.5	7.5	*	64.2
Asia	77.4	9.4	86.9	13.2	100.1	48.7	13.2	67.3
Europe - Germany	20.3	5.1	25.3	*	26.4	12.7	*	67.5
Greece	37.6	5.9	43.6	*	45.2	27.1	*	62.6
Italy	53.0	9.9	62.9	4.3	67.2	51.7	6.4	56.5
Malta	12.8	*	15.1	*	15.5	10.9	*	58.7
Netherlands	17.6	*	20.5	*	20.7	12.9	*	61.7
Poland	5.5	*	7.8	*	8.9	12.2	*	42.1
U.K. and Ireland	122.4	32.1	154.5	10.4	164.9	83.6	6.3	66.4
Yugoslavia	29.9	*	32.0	*	35.6	17.6	*	67.0
Other Europe	29.7	6.3	36.0	*	38.9	29.0	*	57.3
Total Europe	328.9	68.8	397.7	25.6	423.2	257.5	6.0	62.2
New Zealand	15.6	*	18.3	*	19.2	6.7	*	74.0
Total Oceania	20.7	*	23.9	*	25.4	8.0	*	76.0
Main English-speaking countries (b)	147.8	36.9	184.8	13.2	198.0	97.1	6.7	67.1
Other	308.8	48.7	357.5	30.9	388.4	236.1	7.9	62.2
Period of arrival -								
Before 1961	134.8	31.0	165.8	6.4	172.2	162.9	3.7	51.4
1961 to 1965	62.5	14.6	77.1	*	80.8	39.9	*	66.9
1966 to 1970	88.4	16.3	104.7	9.0	113.7	37.2	7.9	75.3
1971 to 1975	61.8	11.8	73.6	7.2	80.8	32.1	8.9	71.6
1976 to 1980	47.5	5.3	52.8	4.5	57.3	21.1	7.9	73.1
1981 to survey date	61.6	6.6	68.3	13.2	81.5	39.9	16.2	67.1
Total overseas born	456.7	85.6	542.3	44.1	586.3	333.1	7.5	63.8

(a) Because it is not practicable to ascertain the birthplace of persons in institutions (who are classified as 'not in the labour force'), labour force participation rates for persons classified by birthplace are calculated by using population estimates which exclude those in institutions.

(b) Comprises United Kingdom and Ireland, Canada, United States of America, South Africa, and New Zealand.

TABLE 4. CIVILIAN POPULATION AGED 15 YEARS AND OVER BY LABOUR FORCE STATUS AND FAMILY STATUS, VICTORIA, MARCH 1987

Family status	Employed				Labour force ('000)	Civilian population 15 years and over			Unemployment rate (per cent)	Participation rate (per cent)
	Full-time ('000)	Part-time ('000)	Total ('000)	Unemployed ('000)		Not in labour force ('000)	Population ('000)	Unemployment rate (per cent)		
Member of a family -										
Married -										
Husband -										
With children (a)	394.5	8.1	402.6	16.3	418.9	19.3	438.2	3.9	95.6	
Without children (a)	293.3	18.3	311.5	12.0	323.6	175.9	499.4	3.7	64.8	
Wife -										
With children (a)	95.6	132.9	228.5	20.5	249.0	180.6	429.6	8.2	58.0	
Without children (a)	147.6	73.6	221.2	8.8	230.1	273.7	503.8	3.8	45.7	
Not-married family head -										
Male -										
With children (a)	4.4	*	4.6	*	4.8	*	5.7	*	84.3	
Without children (a)	13.2	*	14.9	*	16.0	8.6	24.6	*	65.1	
Female -										
With children (a)	11.4	11.4	22.8	4.1	26.8	30.7	57.6	15.2	46.6	
Without children (a)	14.1	5.4	19.5	*	23.1	38.7	61.8	*	37.4	
Child of family head (b) -										
Males	181.3	38.2	219.5	30.5	250.0	78.5	328.5	12.2	76.1	
Females	103.9	36.8	140.7	25.9	166.6	77.0	243.6	15.5	68.4	
Other relative of family head -	18.8	*	22.3	*	24.5	37.8	62.3	*	39.3	
Total	1,277.9	330.1	1,608.1	125.3	1,733.3	921.7	2,655.1	7.2	65.3	
Not a member of a family -										
Living alone -										
Males	73.4	6.2	79.6	4.1	83.8	37.8	121.6	4.9	68.9	
Females	32.7	8.6	41.3	*	43.0	113.9	156.9	*	27.4	
Not living alone -										
Males	72.2	6.0	78.2	4.6	82.8	10.0	92.8	5.5	89.2	
Females	47.5	10.7	58.2	6.7	64.9	12.0	76.9	10.3	84.4	
Total	225.8	31.5	257.3	17.1	274.4	173.7	448.1	6.2	61.2	
Not family coded	48.3	14.8	63.1	7.9	71.0	83.8	154.8	11.1	45.8	
Total	1,552.0	376.5	1,928.5	150.3	2,078.7	1,179.2	3,258.0	7.2	63.8	

(a) Aged 0-14 present in household. (b) Aged 15 and over.

TABLE 5. EMPLOYED PERSONS, FULL-TIME AND PART-TIME STATUS BY AGE AND MARITAL STATUS, VICTORIA,  
MARCH 1987  
('000)

Marital status	Age group (years)								Total
	15-19	20-24	25-34	35-44	45-54	55-59	60-64	65 and over	
EMPLOYED FULL-TIME									
Males -									
Married	*	24.5	189.9	230.6	157.5	57.3	32.3	9.3	701.8
Other	68.8	110.6	108.8	38.7	22.1	12.5	5.1	*	368.9
Total	69.3	135.1	298.7	269.2	179.5	69.7	37.4	11.7	1,070.7
Females -									
Married	*	28.5	79.5	78.3	48.4	13.5	*	*	253.9
Other	48.1	81.0	53.3	22.6	11.7	6.3	*	*	227.4
Total	49.1	109.5	132.8	100.9	60.1	19.8	7.0	*	481.3
Persons -									
Married	*	53.0	269.4	308.9	205.8	70.8	36.0	10.3	955.8
Other	116.9	191.6	162.1	61.2	33.8	18.8	8.3	*	596.2
Total	118.4	244.6	431.5	370.2	239.6	89.5	44.4	13.8	1,552.0
EMPLOYED PART-TIME									
Males -									
Married	*	*	*	5.0	5.6	*	4.2	4.5	27.0
Other	28.1	12.2	8.1	*	*	*	*	4.2	58.0
Total	28.1	12.4	12.0	6.8	7.1	5.0	4.8	8.7	85.0
Females -									
Married	*	6.1	64.0	78.6	43.8	11.2	6.4	*	212.8
Other	32.2	15.7	11.2	7.7	4.8	*	*	*	78.6
Total	32.4	21.8	75.3	86.3	48.6	14.3	8.2	4.5	291.4
Persons -									
Married	*	6.4	68.0	83.5	49.4	14.7	10.6	7.1	239.8
Other	60.3	27.8	19.3	9.6	6.3	4.6	*	6.2	136.6
Total	60.5	34.2	87.3	93.1	55.6	19.3	13.1	13.3	376.5
TOTAL EMPLOYED									
Males -									
Married	*	24.8	193.9	235.5	163.0	60.8	36.5	13.8	728.8
Other	96.9	122.8	116.9	40.5	23.6	13.9	5.7	6.6	426.9
Total	97.4	147.6	310.7	276.0	186.6	74.7	42.2	20.4	1,155.7
Females -									
Married	*	34.6	143.5	156.9	92.2	24.7	10.1	*	466.8
Other	80.3	96.7	64.6	30.3	16.5	9.4	5.1	*	306.0
Total	81.5	131.2	208.1	187.3	108.6	34.2	15.2	6.6	772.8
Persons -									
Married	*	59.3	337.4	392.5	255.2	85.5	46.6	17.4	1,195.6
Other	177.2	219.5	181.4	70.8	40.1	23.4	10.8	9.6	732.9
Total	178.9	278.8	518.8	463.3	295.2	108.9	57.4	27.1	1,928.5

TABLE 6. EMPLOYED PERSONS BY HOURS WORKED, VICTORIA, MARCH 1987

Weekly hours worked	Number employed ('000)				Percentage distribution					
	Females				Females					
	Males	Married	Other	Total Persons	Males	Married	Other	Total Persons		
0(a)	60.1	26.6	16.9	43.4	103.6	5.2	5.7	5.5	5.6	5.4
1-15	56.1	99.9	50.4	150.2	206.3	4.9	21.4	16.5	19.4	10.7
16-29	77.9	108.3	39.2	147.5	225.4	6.7	23.2	12.8	19.1	11.7
30-34	205.1	69.0	53.3	122.4	327.4	17.7	14.8	17.4	15.8	17.0
35-39	183.3	63.4	59.3	122.7	306.0	15.9	13.6	19.4	15.9	15.9
40	210.8	44.5	48.3	92.8	303.7	18.2	9.5	15.8	12.0	15.7
41-44	57.2	14.1	14.2	28.3	85.5	4.9	3.0	4.6	3.7	4.4
45-48	86.8	12.2	10.0	22.3	109.1	7.5	2.6	3.3	2.9	5.7
49-59	103.7	12.3	8.7	21.0	124.8	9.0	2.6	2.8	2.7	6.5
60 and over	114.6	16.5	*	22.0	136.6	9.9	3.5	*	2.9	7.1
Total	1,155.7	466.8	306.0	772.8	1,928.5	100.0	100.0	100.0	100.0	100.0

## AVERAGE WEEKLY HOURS WORKED (b)

Full-time workers	40.0	36.8	34.9	35.9	38.8	**	**	**	**	**
Part-time workers	13.3	15.3	13.1	14.7	14.4	**	**	**	**	**
All employed persons	38.1	27.0	29.3	27.9	34.0	**	**	**	**	**

(a) Persons who had a job from which they were absent for the whole of the survey week. Excludes persons laid off without pay for the whole of the survey week, who are classified as unemployed.

(b) For information regarding the calculation of standard errors, refer to Information Paper: Victorian Labour Force Statistics (6262.2), Section 4.5.

TABLE 7. UNEMPLOYED PERSONS BY AGE AND WHETHER LOOKING FOR FULL-TIME OR PART-TIME WORK, VICTORIA, MARCH 1987

Particulars	Number ('000)			Unemployment rate (per cent)		
	Males	Females	Persons	Males	Females	Persons
15-19 - 15-17	10.2	11.6	21.8	19.1	22.7	20.9
18-19	8.4	11.0	19.4	13.4	20.7	16.8
Looking for first job	7.6	9.6	17.2	**	**	**
Not looking for first job	10.9	13.0	23.9	**	**	**
Attending school	5.8	6.6	12.4	24.2	24.9	24.6
Not attending school -						
Left before 1984	*	*	*	*	*	*
Left from 1984 to survey date	12.0	14.5	26.4	15.3	20.7	17.9
Total aged 15-19 years	18.6	22.6	41.2	16.0	21.7	18.7
20-24	15.3	13.2	28.5	9.4	9.1	9.3
25-34	15.2	19.1	34.3	4.7	8.4	6.2
35-44	10.5	14.1	24.6	3.7	7.0	5.0
45-54	6.1	5.9	11.9	3.1	5.1	3.9
55 and over	8.3	*	9.9	5.7	*	4.8
Looking for - Full-time work	65.6	49.5	115.1	5.8	9.3	6.9
- Part-time work	8.3	26.9	35.1	8.8	8.4	8.5
Total unemployed	73.9	76.4	150.3	6.0	9.0	7.2

TABLE 8. UNEMPLOYED PERSONS BY DURATION OF UNEMPLOYMENT (a), VICTORIA, MARCH 1987

Particulars	Number ('000)			Percentage distribution		
	Males	Females	Persons	Males	Females	Persons
<b>Duration of unemployment (weeks) -</b>						
Under 2	5.3	9.3	14.6	7.2	12.2	9.7
2 and under 4	6.8	7.2	14.0	9.2	9.4	9.3
4 and under 8	7.5	13.4	20.9	10.2	17.5	13.9
8 and under 13	10.0	11.4	21.4	13.5	14.9	14.2
13 and under 26	15.6	13.5	29.2	21.2	17.7	19.4
26 and under 52	9.2	7.4	16.6	12.4	9.7	11.1
52 and under 104	9.1	7.4	16.5	12.3	9.7	11.0
104 and over	10.4	6.7	17.1	14.0	8.8	11.3
<b>Age (years) -</b>						
<b>15-19 -</b>						
Under 13 weeks	9.9	12.5	22.3	13.3	16.3	14.9
13 weeks and under 52	5.5	7.5	13.0	7.5	9.8	8.6
52 weeks and over	*	*	5.8	*	*	3.9
Total	18.6	22.6	41.2	25.1	29.6	27.4
<b>20-24 -</b>						
Under 13 weeks	7.8	5.9	13.7	10.6	7.7	9.1
13 weeks and under 52	5.1	4.8	9.9	6.9	6.2	6.6
52 weeks and over	*	*	4.9	*	*	3.3
Total	15.3	13.2	28.5	20.7	17.3	18.9
<b>25 and over -</b>						
Under 13 weeks	11.9	22.9	34.8	16.1	30.0	23.2
13 weeks and under 52	14.2	8.7	23.0	19.2	11.4	15.3
52 weeks and over	13.9	9.0	22.8	18.8	11.7	15.2
Total	40.0	40.6	80.6	54.2	53.2	53.7
Total	73.9	76.4	150.3	100.0	100.0	100.0

## DURATION OF UNEMPLOYMENT (WEEKS)

<b>Average (mean) duration -</b>						
Aged 15-19 years	22.8	20.0	21.2	**	**	**
Aged 20-24 years	32.7	31.3	32.0	**	**	**
Aged 25 years and over	55.3	36.1	45.7	**	**	**
All ages	42.4	30.5	36.4	**	**	**
<b>Median duration (b) -</b>						
Aged 15-19 years	11.0	10.0	10.0	**	**	**
Aged 20-24 years	12.0	*	13.0	**	**	**
Aged 25 years and over	26.0	9.0	17.0	**	**	**
All ages	16.0	10.0	13.0	**	**	**

(a) Period from the time a person began looking for work, or was laid off to the end of the survey week. Periods of unemployment are recorded in complete weeks resulting in a slight understatement of duration of unemployment. (b) For information regarding the calculation of standard errors, refer to Information Paper: Victorian Labour Force Statistics (6262.2), Section 4.5

TABLE A. STANDARD ERRORS OF ESTIMATES, VICTORIA  
(<sup>'000</sup>)

Size of estimate	4.0	4.5	5.0	6.0	10.0	20.0	50.0	100.0	200.0	300.0	500.0	1,000.0	2,000.0
Standard error	1.0	1.0	1.1	1.2	1.5	2.0	2.9	3.7	4.8	5.5	6.5	8.1	9.9

TABLE B. STANDARD ERRORS OF ESTIMATES OF MONTH TO MONTH MOVEMENTS, VICTORIA  
(<sup>'000</sup>)

Size of larger estimate	4.0	4.5	5.0	6.0	10.0	20.0	50.0	100.0	200.0	300.0	500.0	1,000.0	2,000.0
Standard error	0.9	1.0	1.0	1.1	1.3	1.6	2.3	2.9	3.7	4.2	5.1	6.5	8.3