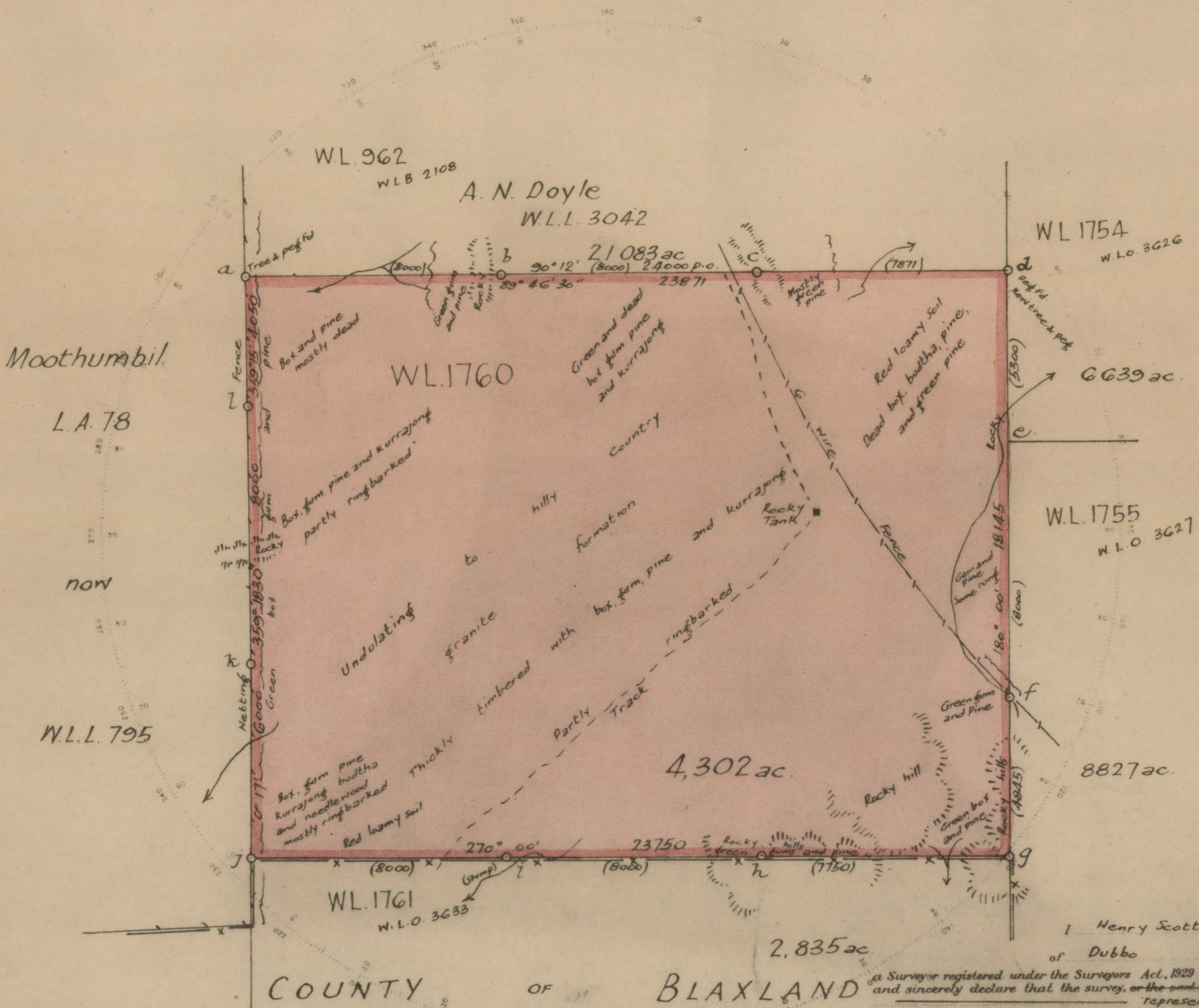


PLAN OF PORTION WL 1760

County of Mouramba Western Division

Applied for under Section 25 of the Western Lands Act of 1901 by Allan & Walter Ford

Western Lands Lease No 3887 vide Gazette



Azimuth taken from Pt. W.L. 1761
Field Book Vol. 242 Folio 11 to 54.

Corner	Bearing	From	Links	ft on Tree
a	117° 25'	Pine	27.0	W.L. 962
b	116° 40'	Pine	27.9	W.L. 962-1760
c	85° 56'	do	65.4	B
d	60° 00'	Gum	3.8	A
e	115° 23'	Pine	39.2	W.L. 962
f	115° 23'	Pine	152.5	W.L. 1754-962
g	323° 36'	Gum	63.2	W.L. 1754-1755
h	24° 03'	Pine	21.2	A
i	8° 40'	do	88.3	W.L. 1760-1761
j	153° 19'	do	47.2	B
k	308° 00'	do	39.1	A
l	314° 21'	Gum	105.5	W.L. 1760-1761
m	260° 51'	do	126.4	A
n	97° 17'	Box	27.0	B

Nature and Value of Improvements

I Henry Scott-Kemmis
of Dubbo
a Surveyor registered under the Surveyors Act, 1929 do hereby solemnly and sincerely declare that the survey, or the part thereof shown in lines represented in this plan has been made by me in accordance with the Survey Practice Regulations 1933 and the special requirements of the Western Lands Office and was completed on the 21st August 1935.
And I make this solemn declaration conscientiously believing the same to be true and by virtue of the provisions of the Oaths Act, 1900.

H. Scott-Kemmis

Surveyor registered under the Surveyors Act 1929.

Subscribed and declared before me at Cobar
this 14th day of Sept 1935

D. H. Dunlop, J.P.

Justice of the Peace

I hereby certify that I in person made and completed the survey represented on this plan on which are written the bearings and lengths of the lines measured by me and I declare that the survey has been executed in accordance with the regulations of the Western Land Board.

Transmitted to the Western Land Board with my letter of 14th Sept 1935

Voucher No. Passed
Calculation Book No. 611 Folio 55
Checked and Charted G. R. Woods 24.9.1935
Examined
Plan approved } S. H. Pasley 21.10.1935

Scale 40 Chains to an Inch

Engraved and Printed at the Department of Lands, Sydney, N.S.W.

Cat. No. WLO 3632

Draftsman

Exd. GRW.