

COMMONWEALTH BUREAU OF CENSUS AND STATISTICS, CANBERRA, F.C.T.

**MONTHLY REVIEW
OF BUSINESS
STATISTICS**

MARCH, 1938.

No. 6.

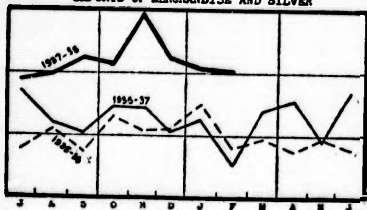
PREPARED UNDER INSTRUCTIONS FROM THE HONORABLE THE TREASURER

BY

ROLAND WILSON, B.Com., D.Phil., Ph.D., COMMONWEALTH STATISTICIAN.

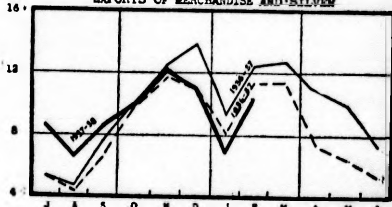
2074
No.
11

IMPORTS OF MERCHANDISE AND SILVER

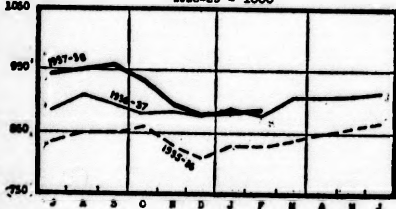


2074
No.

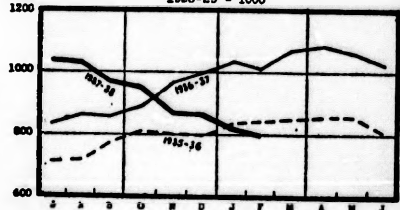
EXPORTS OF MERCHANDISE AND SILVER



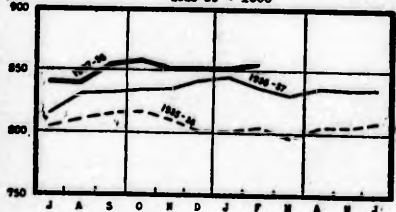
Index
No. **WHOLESALE PRICE INDEX: BASIC MATERIALS AND FOODS**
1928-29 = 1000



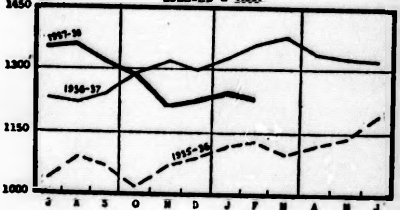
Index
No. **EXPORT PRICE INDEX: AUSTRALIA**
1928-29 = 1000



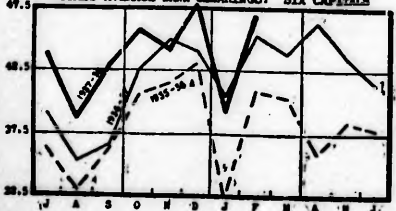
Index
No. **RETAIL PRICE INDEX - FOOD & GROCERIES: SIX CAPITALS**
1928-29 = 1000



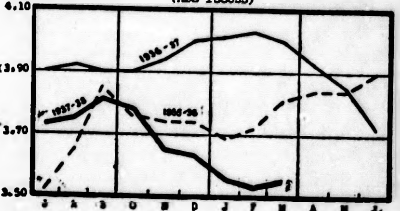
Index
No. **ORDINARY SHARE PRICE INDEX (MELB. STOCK EXCHANGE)**
1928-29 = 1000



2074
No. **WEEKLY AVERAGE BANK CLEARINGS: SIX CAPITALS**



2074
No. **AVERAGE YIELD: AUSTRALIAN CONSOLIDATED LOANS**
(ALL ISSUES)



CONTENTS.

	PAGE
EMPLOYMENT AND UNEMPLOYMENT.	
Index of Employment in Factories	2
Index of Employment in Retail Stores	3
New South Wales: Employment and Unemployment	4
Queensland: Employment and Unemployment	5
Trade Union Unemployment Returns	6
OVERSEA TRADE.	
Balance of Oversea Trade	7
Imports of Merchandise: Economic Classes	8
Imports of Merchandise: Degree of Manufacture	9
Exports of Merchandise: Principal Commodities	9
PRICES.	
Export Prices and Export Price Index	10
Export Price Index (Changing Base)	11
Wholesale Price Index	12
Primary Production Price Indexes	13
Retail Price and Wage-rate Indexes	14
Retail Prices, Hours and Basic Wage Rates	15
Security Price Indexes: New South Wales	16
Security Price Indexes: Melbourne and Queensland	17
BUILDING AND PRODUCTIVE ACTIVITY.	
Building Permits: Metropolitan and Provincial	18, 19
Building Permits: Six Capital Cities and Suburbs	20
Miscellaneous Indexes of Productive Activity	21
TRANSPORT.	
Mainland State Railways: Freight, Passengers and Revenue	22
Mainland Railways: Freight Tonnages Carried	23
Interstate Shipping Cargoes	24
Oversea Shipping Cargoes	25
INTERNAL TRADE.	
Wholesale Trade	26
Retail Trade	27
BANKING AND EXCHANGE.	
Australian Trading Banks	28
Commonwealth Bank of Australia	29
All Cheque-paying Banks	29
Bank Clearings	30
Amounts on Deposit in Savings Banks	31
Interest Rates and Bond Yields: Australia	32
Rates of Interest on First Mortgages: New South Wales	32
Exchange Rates and Gold Prices	33
PUBLIC FINANCE.	
Commonwealth and States: Revenue and Expenditure	34
MISCELLANEOUS.	
Post Office Activity	35
Motor Vehicle Registrations	36
Oversea Tourists and Migrants	37
Bankruptcies and Insolvencies	38
WORLD PRICES AND PRODUCTION.	
Wholesale Price Indexes: Principal Countries	39
World Production and Trade	40
GRAPHS.	
Overseas Trade, Prices, Bond Yields, Bank Clearings	<i>Inside front cover</i>
Employment, Railway Freights, Pig Iron, Building, Miscellaneous	<i>Inside back cover</i>

INDEX OF EMPLOYMENT IN FACTORIES.(a)

(Base : 1928-29 = 100.)

Period.	New South Wales.	Victoria.	Queensland.	South Australia.	Western Australia.	Tasmania.	Australian Index.	
							Un-adjusted.	Divided by Index of Employee Population.
<i>Number of employees in—</i>								
1928-29	174,120	149,266	43,436	35,376	19,799	9,984	431,981	..
<i>Index for—</i>								
1928-29	100	100	100	100	100	100	100	100
1929-30	90	97	94	87	94	104	93	92
1930-31	70	80	84	64	69	84	75	72
1931-32	69	81	79	64	63	85	74	71
1932-33	76	92	82	71	70	87	82	77
1933-34	85	100	88	80	77	92	90	84
1934-35	97	108	94	91	85	100	100	92
1935-36	107	117	99	105	100	110	109	100
1936-37	115	121	106	111	107	114	115	105
1936-37—								
November	115	121	108	109	106	115	115	105
December	114	120	105	111	106	116	115	104
January	113	116	97	107	106	116	112	101
February	119	123	99	113	108	122	118	106
March	119	124	102	115	108	124	110	107
April	117	127	103	118	109	117	119	107
May	119	126	108	119	106	115	120	108
June	120	126	110	119	107	115	120	108
1937-38—								
July	119	123	113	115	107	114	119	107
August	121	124	119	114	108	111	120	108
September	122	126	118	114	107	112	122	109
October	125	128	116	113	107	116	123	110
November	126	130	116	117	107	117	125	112
December	126	131	112	117	107	121	125	112
January	123	126	103	115	107	125	121	108
February	128	131	107	119	110	124	125	112

(a) Excluding Working Proprietors.

The estimated percentage changes in employment in factories from February, 1937, to February, 1938 (the latest month for which figures are available for all States) are:—New South Wales, + 7.6; Victoria, + 6.5; Queensland, + 8.1; South Australia, + 5.3; Western Australia, + 1.9; Tasmania, + 1.6; Australia, + 5.9 (or, taking account of the growth of employee population, + 5.7).

INDEX OF EMPLOYMENT IN RETAIL STORES.

(Base : July, 1933 = 100.)

Period.	New South Wales	Victoria.	Queensland.	South Australia.	Western Australia.	Tasmania.	Australian Index.		
							Un-adjusted.	Divided by Index of Employee Population.	
1933—July	100	100	100	100	100	100	100	100	
1933-34	103	107	101	102	99	106	104	103	
1934-35	111	118	106	108	105	108	112	110	
1935-36	118	130	109	114	110	112	119	116	
1936-37	124	137	111	115	115	119	125	120	
1936-37—									
November	123	139	111	115	116	119	125	121	
December	137	155	121	125	127	132	138	133	
January	123	138	112	112	116	120	125	120	
February	125	137	111	111	114	122	125	120	
March	123	135	111	111	114	118	123	118	
April	124	136	109	113	114	120	124	119	
May	126	138	111	114	113	121	126	120	
June	126	141	110	114	113	121	126	121	
1937-38—									
July	129	137	110	115	115	124	127	121	
August	126	133	110	112	113	121	124	118	
September	126	135	110	117	113	123	125	119	
October	127	140	110	113	114	123	127	121	
November	129	143	110	115	116	125	129	123	
December	144	161	123	129	126	138	144	137	
January	128	144	111	115	122	126	129	123	
February	131	139	111	112	116	124	128	122	

The estimated percentage changes in employment in retail stores from February, 1937, to February, 1938 (the latest month for which figures are available for all States) are:—New South Wales, + 4.8; Victoria, + 1.5; Queensland, —; South Australia, + 0.9; Western Australia, + 1.8; Tasmania, + 1.6; Australia, + 2.4 (or, taking account of the growth of employee population, + 1.7).

NEW SOUTH WALES : EMPLOYMENT AND UNEMPLOYMENT.

The following table, compiled by the Government Statistician of New South Wales from Census data, the returns of private employers accompanying remittances of wages tax, and returns of Government employment, gives the best measure available of the course of *total employment and unemployment* in New South Wales.

Middle of month.	Percentage of all who are dependent on and available for employment—			
	Including full-time equivalent of part-time relief workers with employed.		Excluding full-time equivalent of part-time relief workers from employed.	
	Employed.	Unemployed.	Employed.	Unemployed.
1933—June	74.4	25.6	73.5	26.5
1934—June	80.5	19.5	77.8	22.2
1935—June	85.9	14.1	83.1	16.9
1936—June	89.3	10.7	87.1	12.9
1936—				
November	91.6	8.4	90.1	9.9
December (a)	91.9	8.1	90.5	9.5
1937—				
January	90.4	9.6	89.2	10.8
February	92.2	7.8	90.8	9.2
March	92.2	7.8	90.8	9.2
April	92.6	7.4	91.3	8.7
May	93.1	6.9	91.9	8.1
June	93.5	6.5	92.3	7.7
July	93.8	6.2	92.6	7.4
August	94.3	5.7	93.0	7.0
September	95.1	4.9	93.9	6.1
October	96.2	3.8	95.1	4.9
November	96.9	3.1	95.7	4.3
December (a)	97.2	2.8	96.0	4.0
1938—				
January	94.6	5.4	93.5	6.5
February	96.0	4.0	95.0	5.0

(a) Adjusted to exclude casual seasonal assistants in retail stores.

NOTES.

1. The index of employment is the ratio of the number in employment to the estimated number of wage earners available for employment. The index of unemployment is the residue, but both indexes are derived by modifying the Census ratios in accordance with subsequent changes.

2. "Number in employment" is virtually a direct record; "number of available wage earners" is an estimate derived by increasing the total wage earners in employment (plus unemployed) at the Census of 1933 in ratio to the annual increase in persons aged 15 to 64 years. In order to increase the degree of precision in the index, adjustment has now been made in the number of available wage earners thus estimated to allow for (a) increase in the proportion of females who are wage earners, (b) youths who—according to details recently made available—were without occupation but were not recorded in the wage-earning group at the Census of 1933. Adjustment for seasonal variations in employment is not made.

3. At the Census of 1933, 15,142 persons, or 1.8 per cent. of total dependent on employment, were unemployed by reason of illness, accident, &c., or voluntarily. These are excluded from the above indexes, which relate to percentages of available wage earners employed and unemployed.

4. The percentages of unemployment shown above are approximations relating to all wage earners of both sexes. Separate estimates for males and females cannot be made from the data available. It is known, however, that there is relatively little unemployment among females; unemployment among males is probably between 1 per cent. and 1.5 per cent. greater than the ratio shown above for both sexes combined.

QUEENSLAND: EMPLOYMENT AND UNEMPLOYMENT.

The following table, compiled by the Queensland Bureau of Industry from the amount of contributions to the Unemployment Insurance Scheme, wages paid from the Unemployment Relief Fund, and other records, gives the best measure available of *total adult male employment* in Queensland.

MEN WAGE AND SALARY EARNERS.

Three months ended—	Percentage of all who are dependent on employment.			
	Including full-time equivalent of relief workers with employed.		Excluding "Intermittent Relief Workers" from employed.	
	Employed.	Unemployed.	Employed.	Unemployed.
1933—June	79.0	21.0	72.9	27.1
1934—June	85.0	15.0	80.2	19.8
1935—June	89.9	10.1	85.2	14.8
1936—June	91.8	8.2	86.4	13.6
1936—				
November	92.0	8.0	88.3	11.7
December	91.9	8.1	88.1	11.9
1937—				
January	92.7	7.3	88.8	11.2
February	91.8	8.2	87.8	12.2
March	91.4	8.6	87.8	12.2
April	93.6	6.4	90.0	10.0
May	94.0	6.0	90.3	9.7
June	94.3	5.7	90.5	9.5
July	94.5	5.5	90.7	9.3
August	94.9	5.1	91.2	8.8
September	95.0	5.0	91.4	8.6
October	95.2	4.8	91.5	8.5
November	95.2	4.8	91.7	8.3
December	95.5	4.5	91.9	8.1
1938—				
January	95.4	4.6	91.8	8.2

NOTES.

1. The measurement is in terms of "full-time" employment, including its equivalent in "rationed" employment.
2. Normal seasonal variations are not recorded, the figures showing the trend apart from such changes.
3. The indexes have been adjusted to allow for the estimated increase in the number of men dependent on employment.

TRADE UNION UNEMPLOYMENT RETURNS.

The only regular records of unemployment available in comparable form over a considerable period are the quarterly percentages reported by trade unions to the Commonwealth Statistician. The membership of the reporting unions consists predominantly of males, and represents at present about 54 per cent. of the total trade union membership and about 20 per cent. of all wage and salary earners.

The percentages stated for New South Wales and Queensland differ from those given on previous pages partly because of differences in the field of employment covered, and partly because the trade union returns relate only to the position as it is known to the unions.

Period.	New South Wales.	Victoria.	Queensland.	South Australia.	Western Australia.	Tasmania.	Australia.
	%	%	%	%	%	%	%
1928-29	10.6	9.7	7.0	14.6	9.1	10.4	10.2
1929-30	15.9	14.6	8.0	18.9	13.8	14.1	14.6
1930-31	27.4	23.1	13.6	29.1	24.1	26.0	24.3
1931-32	32.0	26.5	18.1	33.8	28.7	27.6	28.7
1932-33	31.2	24.8	17.4	32.0	28.0	22.4	27.5
1933-34	26.7	19.8	13.8	28.3	21.0	18.3	22.7
1934-35	23.6	15.7	9.8	22.0	15.7	17.3	18.9
1935-36	17.4	11.9	8.3	13.6	11.0	13.6	14.0
1936-37	12.8	10.1	7.4	9.4	6.0	11.3	10.6
1936—							
November	13.3	9.7	7.2	9.9	5.6	12.9	10.7
1937—							
February	11.8	9.5	7.7	9.5	5.4	7.9	9.9
May	11.4	9.6	7.6	8.3	5.6	10.4	9.7
August	10.5	9.5	7.2	8.4	6.6	10.6	9.3
November	10.1	7.3	6.6	6.5	5.0	10.2	8.2

INDUSTRIAL GROUPS: CHANGE FROM AUGUST TO NOVEMBER, 1937.

Manufacturing—I. Wood, furniture, &c., 5.5% to 4.3%; II. Engineering, metal works, &c., 5.4% to 5.5%; III. Food, drink and tobacco, &c., 20.0% to 15.7%; IV. Clothing, hats, boots, &c., 12.5% to 10.3%; V. Books, printing, &c., 4.1% to 3.4%; VI. Other Manufacturing, 8.6% to 8.4%; VII. Building, 9.1% to 7.4%; VIII. Mining, quarrying, &c., 13.2% to 13.6%; X. Land Transport, other than railway and tramway services, 12.6% to 11.6%; IX., XI., XII., XIII. and XIV. Other and Miscellaneous, 8.0% to 7.0%; All Groups, 9.3% to 8.2%.

BALANCE OF OVERSEA TRADE.

In the following table the oversea trade of the Commonwealth in physical commodities has been set out in a form which distinguishes between the ordinary trade in commodities other than gold, those movements of gold which may be regarded as resulting from current Australian production, and those movements of gold which cannot be attributed to the fact that Australia is a gold-producing country. The balance of trade on "current" account (that is, including credits from gold produced rather than gold exported) is given in columns D and F. The total balance of trade, as officially recorded, is given by the total of columns D and F.

Out of the credits mentioned above, together with those accruing from other "invisible" sources and existing balances of "oversea funds", Australia has to provide for various recurrent charges incurred overseas, and some payments of a capital nature. Chief among the former are the oversea interest commitments of the Australian Governments and other public bodies, which for the present trade year are estimated at approximately £22,000,000 sterling.

£'000 Sterling.

Period.	Merchandise and Silver.		Gold.	Net Credits from Current Items.		Gold.
	Imports.	Exports.	Current Production.	Excess of Exports and Gold Production over Imports.	Progressive totals from 1st July.	Net Exports in excess of current Production.
	A.	B.	C.	D.	E.	F.
1928-29	143,300	138,644	1,860	-2,796	..	781
1929-30	130,788	98,254	1,878	-30,656	..	24,702
1930-31	60,586	77,050	2,164	18,628	..	9,738
1931-32	44,059	75,813	3,609	35,363	..	5,273
1932-33	56,872	78,548	4,606	26,282	..	12,302
1933-34	59,502	90,713	5,671	36,882	..	978
1934-35	72,440	82,132	5,891	15,583	..	522
1935-36	83,617	98,655	7,358	22,396	..	1,259
1936-37	90,642	(b) 117,657	(b) 9,026	36,041	..	328
1936-37—		(b)				
November	7,884	12,589	725	5,430	5,300	-92
December	7,147	13,864	873	7,590	12,890	35
January	7,588	9,315	655	2,382	15,272	201
February	6,136	12,604	772	7,240	22,512	-245
March	7,802	12,761	739	5,698	28,210	125
April	8,143	11,262	773	3,892	32,102	89
May	6,766	10,082	802	4,118	36,220	229
June	8,466	7,477	805	-184	36,036	-49
1937-38 (a)—						
July	8,810	8,484	789	463	463	282
August	8,985	6,550	807	-1,628	-1,165	67
September	9,478	8,460	815	-203	-1,368	100
October	9,284	9,926	795	1,438	70	111
November	10,817	12,206	887	2,276	2,346	-98
December	9,441	11,091	958	2,608	4,954	73
January	9,103	6,946	778	-1,379	3,575	144
February	9,022	10,354	875	2,207	5,782	93

(a) Subject to revision.

(b) Revised.

IMPORTS OF MERCHANDISE : ECONOMIC CLASSES.

Period.	Producers' Materials for use in—								Fuels and Lubricants.		Auxiliary Aids to Production.		Munitions and War Stores.	
	Building and Construction.		Rural Industries.		Manufacturing.		Total.							
	Class Ia.		Class Ib.		Class Ic.		Class I.		Class II.		Class III.		Class VII.	
	£ stg. 000	%	£ stg. 000.	%	£ stg. 000.	%	£ stg. 000.	%	£ stg. 000	%	£ stg. 000.	%	£ stg. 000.	%
1928-29 ..	10,192	7.1	1,906	1.3	53,147	37.1	65,245	45.5	9,543	6.7	4,948	3.5	441	0.3
1932-33 ..	1,903	3.3	955	1.7	27,227	47.9	30,085	52.9	5,065	8.9	4,446	7.8	116	0.2
1933-34 ..	2,367	4.0	873	1.4	26,559	44.7	29,799	50.1	4,379	7.4	3,899	6.6	161	0.3
1934-35 ..	3,358	4.6	976	1.3	31,609	43.7	35,943	49.6	4,421	6.1	3,692	5.1	192	0.3
1935-36 ..	3,928	4.7	1,261	1.5	34,050	40.8	39,239	47.0	5,636	6.7	4,179	5.0	476	0.6
1936-37 ..	3,653	4.0	1,498	1.7	36,160	39.9	41,311	45.6	6,537	7.2	4,292	4.7	349	0.4
1937-38—														
November	506	4.7	164	1.5	4,248	39.3	4,918	45.5	785	7.3	834	7.7	25	0.2
December	443	4.7	144	1.5	3,646	38.7	4,233	44.9	824	8.7	541	5.7	21	0.2
January ..	406	4.5	139	1.5	3,918	43.0	4,463	49.0	429	4.7	413	4.5	17	0.2
July-Jan.	2,909	4.4	1,011	1.5	26,928	40.9	30,848	46.8	4,703	7.1	3,161	4.8	302	0.5

Period.	Capital Equipment.						Finished Consumers' Goods.							
	Producers' Equipment.	Transport Equipment.				Food, Beverages and Tobacco.	Clothing and Accessories.	All other.	Total.					
		Road Vehicles and complete parts.		Railway equipment, vessels and civil aircraft.										
	Class IV.		Class Va.		Class V. A, C, D.		Class VI. A, B, C.		Class VI. D.		Class VI. E-J.		Class VI.	
	£ stg. 000.	%	£ stg. 000.	%	£ stg. 000.	%	£ stg. 000.	%	£ stg. 000.	%	£ stg. 000.	%	£ stg. 000.	%
1928-29 ..	12,077	8.4	15,216	10.6	1,343	0.9	10,606	7.4	2,925	2.1	20,937	14.6	34,468	24.1
1932-33 ..	3,110	5.5	2,159	3.8	530	1.0	3,445	6.0	152	0.3	7,735	13.6	11,332	19.9
1933-34 ..	3,947	6.6	3,820	6.4	529	0.9	4,550	7.7	252	0.4	8,099	13.6	12,901	21.7
1934-35 ..	5,811	8.0	6,149	8.5	972	1.3	4,752	6.6	358	0.5	10,131	14.0	15,241	21.1
1935-36 ..	7,909	9.5	8,613	10.3	702	0.8	4,720	5.7	434	0.5	11,613	13.9	16,767	20.1
1936-37 ..	9,301	10.3	9,183	10.2	1,536	1.7	5,427	6.0	486	0.5	12,180	13.4	18,093	19.9
1937-38—														
November	1,038	9.6	953	8.8	213	2.0	589	5.4	62	0.6	1,397	12.9	2,048	18.9
December	1,099	11.7	944	10.0	72	0.8	499	5.3	63	0.7	1,136	12.0	1,698	18.0
January ..	1,054	11.6	1,006	11.1	64	0.7	521	5.7	63	0.7	1,071	11.8	1,655	18.2
July-Jan.	6,955	10.6	6,999	10.6	686	1.0	3,268	5.0	432	0.7	8,537	12.9	12,237	18.6

IMPORTS OF MERCHANDISE : DEGREE OF MANUFACTURE.

£'000 Sterling.

Period.	Producers' Materials (Class I.)			Finished Consumers' Goods (Class VI.)			Total Imports of Merchandise (All Classes).			
	Crude.	Simply transformed.	Elaborately transformed.	Crude.	Simply transformed.	Elaborately transformed.	Crude.	Simply transformed.	Elaborately transformed.	Total.
1928-29	15,199	5,252	44,794	906	5,176	28,386	16,104	20,226	106,951	143,281
1932-33	6,141	2,898	21,046	347	1,844	9,141	6,488	11,376	38,979	56,843
1933-34	6,353	2,921	20,525	345	2,752	9,804	6,698	11,632	41,105	59,435
1934-35	8,027	3,555	24,361	411	2,726	12,104	8,439	12,626	51,356	72,421
1935-36	9,612	3,552	26,075	226	2,733	13,808	9,838	14,064	59,619	83,521
1936-37	10,779	3,922	26,610	477	3,190	14,427	11,255	15,845	63,492	90,592
1937-38—										
January	1,142	456	2,865	33	249	1,373	1,175	1,401	6,525	9,101
July-Jan. .. .	8,115	2,849	19,884	292	1,861	10,084	8,408	11,089	46,394	65,891

NOTE.—Class II. consists entirely of goods "simply transformed", and Classes IV., V. and VII. entirely of goods "more elaborately transformed". Class III. is about equally divided between goods "simply" and "more elaborately transformed".

EXPORTS OF MERCHANDISE : PRINCIPAL COMMODITIES.

£'000 Australian Currency.

Period.	Wool.	Wheat and Flour.	Butter.	Sugar.	Meats.	Hides and Skins.	Lead.	Dried Fruits.	Fresh Fruits.	Total Exports Merchandise and Silver.
1928-29	61,615	26,335	7,159	2,392	6,342	9,291	3,250	2,301	943	138,648
1929-30	36,601	14,985	7,002	2,217	6,264	6,593	3,453	2,171	1,863	98,259
1930-31	32,003	18,258	8,621	1,806	5,753	3,643	2,425	2,250	1,588	90,464
1931-32	32,103	23,053	10,250	2,516	6,370	2,316	2,271	1,966	2,086	96,512
1932-33	36,408	21,954	8,940	1,491	6,001	2,369	2,388	2,231	2,418	98,399
1933-34	57,126	12,141	8,194	2,297	7,097	4,391	2,421	2,652	2,012	113,868
1934-35	39,266	16,220	9,587	2,198	8,847	3,506	2,417	2,166	1,822	103,170
1935-36	52,346	18,571	9,833	2,178	8,754	5,650	3,849	1,987	2,027	123,853
1936-37	62,505	24,352	8,802	2,890	10,332	7,302	4,853	2,060	1,980	147,670
1937-38—										
November .. .	8,537	1,287	1,034	458	1,559	536	389	23	2	15,770
December .. .	10,227	1,769	863	447	1,237	644	344	11	11	17,430
January	4,520	2,743	762	296	832	479	425	3	6	11,687
February .. .	8,302	2,759	879	74	615	545	637	4	74	15,805
March	8,094	3,027	749	1	675	507	440	78	425	15,983
April	5,545	2,173	991	1	786	592	615	659	723	14,109
May	3,838	3,287	903	2	958	539	362	473	397	12,750
June	1,750	2,768	551	7	1,078	592	362	235	151	9,371
July	3,616	1,929	308	368	860	891	262	200	73	10,722
August	1,101	1,499	244	839	659	995	281	274	56	8,212
September .. .	3,933	793	389	642	761	893	753	70	34	10,597
October	4,953	1,362	869	502	1,205	735	541	112	33	12,433
November .. .	6,531	1,451	1,474	608	1,796	520	484	31	37	15,363
December .. .	5,505	2,123	1,120	633	1,381	383	450	11	28	13,891
January	1,474	2,195	1,251	407	882	234	355	4	7	8,700
February .. .	5,447	2,936	1,270	32	769	290	308	22	49	12,973

EXPORT PRICES AND EXPORT PRICE INDEX.

The following table shows the course of prices of seven of the more important Australian export commodities. The quotations are for units of standard grade, and hence do not reflect variations in the grades or qualities of the goods actually exported in each month. Index-numbers of the average level of export prices are included. They are compiled from the prices of 20 commodities, which constitute at present about 85 per cent. of all exports.

Monthly Weighted Averages.	Export Parities—Australian Currency.							General Export Price Index.	
	Wool (Greasy Merino, standard).	Wheat (shippers' limits).	Butter (choicest salted).	Sugar (raw).	Beef (crops and hinds).	Lamb (average of three qualities).	Lead.	Excluding Gold.	Including Gold.
	d. per lb.	d. per bus.	sh. per cwt.	£ per ton.	d. per lb.	d. per lb.	£ per ton.	1928-29 = 1,000.	
1928-29	16.58	55.49	159.6	11.99	4.00	7.20	21.01	1,000	1,000
1929-30	10.73	57.10	143.1	10.52	4.05	6.59	19.98	812	817
1930-31	8.93	29.06	121.0	8.55	3.35	6.00	15.61	608	620
1931-32	8.45	34.92	117.9	10.41	3.22	6.59	14.65	593	612
1932-33	8.38	33.75	92.8	9.65	2.68	4.34	12.72	579	601
1933-34	14.56	33.00	80.7	8.81	2.59	6.26	13.07	796	764
1934-35	9.45	34.94	81.7	8.25	3.05	6.27	12.40	615	642
1935-36	13.36	41.81	105.6	8.65	3.13	7.13	18.94	782	806
1936-37	16.39	60.00	112.5	8.65	3.47	6.94	27.27	959	975
1936-37—									
November ..	16.2	56.87	120.0	8.72	3.10	7.43	25.28	950	967
December ..	16.6	62.98	108.0	8.92	3.19	7.18	30.27	980	997
January ..	18.0	61.01	103.0	10.13	3.32	6.79	32.46	1,023	1,037
February ..	17.2	59.80	94.0	10.27	3.65	6.86	33.80	997	1,012
March ..	17.8	64.06	107.0	10.81	3.70	6.51	39.66	1,057	1,070
April ..	18.6	64.39	116.0	10.73	3.81	6.51	30.85	1,071	1,083
May ..	18.3	62.56	118.0	11.04	4.26	6.54	28.36	1,052	1,064
June ..	17.2	59.87	120.0	11.34	4.26	6.99	26.98	1,014	1,028
1937-38—									
July ..	(17.0)	64.44	126.0	9.87	3.67	7.00	27.80	1,022	1,036
August ..	17.2	60.18	130.0	9.69	3.63	7.19	26.70	1,015	1,029
September ..	15.4	59.31	134.0	9.64	3.70	7.56	23.90	957	973
October ..	14.2	59.66	158.0	9.55	3.65	7.69	21.30	932	950
November ..	12.6	53.98	147.0	9.04	3.65	7.82	19.30	848	869
December ..	13.3	51.65	124.0	9.21	3.65	7.89	18.44	842	862
January ..	11.9	51.86	122.0	8.66	3.79	7.15	18.75	794	817
February ..	11.4	51.51	124.0	7.92	4.06	6.65	17.83	773	797

EXPORT PRICE INDEX (CHANGING BASE).

In computing the monthly index-numbers given on the previous page, the prices are multiplied by the average quantities exported during a fairly recent and representative period. Hence, while they indicate satisfactorily the general trend of the market, they take no account of the relative quantities actually sold at the different prices ruling during each month. In consequence the index-numbers do not give an adequate indication of the significance of the price movements as they actually affected current sales. This is shown more accurately by the index-numbers in the following table, in the computation of which the "quantity-multipliers" are changed each month. The index-numbers are designed solely for comparisons of current prices with those of the corresponding months, or periods of months, of the preceding year.

Base: Weighted Average Price Level in corresponding months of preceding year = 1,000.

Month.	Month stated compared with same month of preceding year.	Period of trade year ending in month stated compared with same period of preceding year.
1936-37—		
November	1,187	1,137
December	1,229	1,159
January	1,242	1,170
February	1,231	1,170
March	1,260	1,182
April	1,268	1,198
May	1,243	1,202
June	1,258	1,205
1937-38—		
July	1,236	1,236
August	1,159	1,200
September	1,137	1,174
October	1,064	1,137
November	890	1,057
December	868	1,010
January	832	986
February	744	945

WHOLESALE PRICE INDEX.

BASIC MATERIALS AND FOODSTUFFS.

This new index is intended to replace the old Melbourne Index of General Wholesale Prices. Its construction has been made possible by the collection of new data on prices and consumption. Both the contents and the method of computation have been altered. The price quotations have in the main been obtained directly from manufacturers and dealers, and, with a few important exceptions, from Melbourne sources. Apart from home-produced building materials, coal and one or two minor commodities, however, the price movements may be taken as representative of fluctuations in wholesale prices in most Australian markets. The weighting system adopted is based on average annual consumption during the years 1928-29 to 1934-35 inclusive.

(Base: 1928-29=1,000.)

Period.	Metals and Coal.	Oils, Fats and Waxes.	Textiles.	Chemicals.	Rubber and Hides.	Building Materials.	Foodstuffs and Tobacco.	Goods principally Imported.	Goods principally Home Produced.	All Groups.
1928-29 ..	1,000	1,000	1,000	1,000	1,000	1,000	1,000	1,000	1,000	1,000
1929-30 ..	992	1,048	769	953	753	992	1,027	1,031	996	1,004
1930-31 ..	917	1,103	619	965	634	1,012	849	1,098	832	898
1931-32 ..	852	1,066	594	984	642	1,004	801	1,093	779	857
1932-33 ..	823	1,022	586	976	604	1,000	745	1,066	732	815
1933-34 ..	808	794	792	917	697	991	788	977	755	811
1934-35 ..	766	842	609	840	674	981	816	1,009	749	814
1935-36 ..	725	895	774	816	766	981	857	1,037	776	840
1936-37 ..	758	925	920	814	963	1,044	910	1,088	828	892
1936-37—										
November ..	731	908	911	814	880	1,002	913	1,059	823	881
December ..	734	913	934	814	947	1,002	896	1,069	811	874
January ..	784	921	1,002	814	1,018	1,029	892	1,076	827	888
February ..	786	918	971	814	1,056	1,044	869	1,085	809	877
March ..	805	959	995	815	1,184	1,085	887	1,137	827	903
April ..	792	958	1,049	815	1,183	1,119	886	1,150	824	904
May ..	786	956	1,040	815	1,084	1,139	895	1,149	827	906
June ..	784	955	986	815	1,014	1,137	910	1,138	837	911
1937-38—										
July ..	787	954	982	815	1,015	1,148	964	1,154	872	941
August ..	788	955	984	815	1,045	1,155	975	1,152	882	949
September ..	808	954	901	821	1,005	1,154	990	1,138	894	957
October ..	799	955	841	821	965	1,119	969	1,129	875	936
November ..	795	953	768	821	848	1,099	903	1,116	824	895
December ..	792	952	785	823	866	1,082	876	1,111	805	879
January ..	804	952	719	822	816	1,085	888	1,110	813	885
February ..	800	951	696	822	744	1,077	893	1,104	814	884

PRIMARY PRODUCTION PRICE INDEXES.

The annual index-numbers in the following table have been recomputed to the base 1928-29 = 1,000 from the revised series recently published in *Production Bulletin* No. 30. They are based in general on prices realized in the principal markets of the Commonwealth.

The monthly index-numbers (based on the nearest equivalent wholesale quotations) are intended progressively to forecast the point which the annual index-numbers will eventually reach, and to provide a preliminary figure for the latest full year pending the completion of the annual census of production. The preliminary index-numbers will be revised as each production census is completed.

(Base: 1928-29 = 1,000.)

Period.	Agriculture.	Pastoral.	Farmyard and Dairying.	Mining other than Gold.	Gold.	All Groups.
1928-29	1,000	1,000	1,000	1,000	1,000	1,000
1929-30	938	811	949	967	1,000	888
1930-31	649	639	759	913	1,000	690
1931-32	717	550	683	742	1,410	647
1932-33	679	538	610	686	1,718	618
1933-34	675	801	599	684	1,817	731
1934-35	749	596	646	689	2,002	674
1935-36	803	767	711	735	2,062	781
1936-37	980	891	731	807	2,047	897
1936-37—						
November	999	881	733	783	2,068	897
December	1,049	876	734	825	2,060	914
January	1,017	944	733	853	2,060	936
February	989	903	733	847	2,066	908
March	1,018	933	733	949	2,069	939
April	1,026	952	731	854	2,053	941
May	1,010	943	731	819	2,044	929
June	982	923	737	808	2,043	912
1937-38—						
July	1,046	952	757	846	2,036	951
August	1,023	980	764	835	2,028	956
September	997	954	770	817	2,040	937
October	999	884	779	774	2,042	905
November	917	793	771	759	2,037	838
December	891	783	775	735	2,032	824
January	910	736	774	751	2,029	811
February	911	720	772	728	2,031	802
1st 8 months 1936-37	966	869	730	782	2,044	881
1st 8 months 1937-38	962	850	770	781	2,034	878

RETAIL PRICE AND WAGE-RATE INDEXES.

In the tables on this and the following page the index-numbers have been recomputed uniformly to the base 1928-29 = 1,000 in order to facilitate comparisons with other data. The absolute heights of the index-numbers differ, in consequence, from those published elsewhere.

(Base: 1928-29 = 1,000.)

Period.	Retail Price Indexes: Six Capital Cities.					Wage Rate Indexes: Six States.	
	Food and Groceries.	Rent of 4 and 5 roomed houses.	Food, &c. and Rent (B Series).	Clothing and Miscellaneous.	Food, Rent, Clothing and Miscellaneous (C Series).	Nominal Weekly Rates, Adult Males.	"Real" Wages, Adult Males.(a)
1928-29	1,000	1,000	1,000	1,000	1,000	1,000	1,000
1929-30	1,001	1,006	1,003	989	997	1,004	1,007
1930-31	869	912	885	932	903	942	1,043
1931-32	802	791	798	881	830	863	1,040
1932-33	753	754	753	858	794	813	1,024
1933-34	761	752	756	852	794	804	1,013
1934-35	786	770	780	848	807	815	1,010
1935-36	807	803	805	850	823	824	1,001
1936-37	834	838	836	862	846	844	998
1936-37—							
October	833	} 835	837	859	845	843	998
November	835						
December	842	} 841	839	861	847	845	998
January	845						
February	836						
March	830						
April	836						
May	834						
June	835	} 848	841	870	851	854	1,004
July	841						
1937-38—							
July	841	} 858	850	874	859	875	1,019
August	840						
September	855						
October	858						
November	851						
December	851	} 863	857	880	866	896	1,035
January	850						
February	854						
	
	

(a) Index of nominal weekly wage rates for adult males divided by "C" series index of retail prices.

RETAIL PRICES, HOURS AND BASIC WAGE RATES.

Particulars.	New South Wales.	Victoria.	Queensland.	South Australia.	Western Australia.	Tasmania.	Six Capitals or Six States.
1937 : March Quarter—							
Retail Prices—"C" Series (a)	867	837	820	828	843	848	847
Nominal weekly wages (a) ..	851	827	880	793	879	827	845
"Real" weekly wages (a) ..	982	988	1,073	958	1,043	975	998
Average weekly hours ..	44.08	46.41	43.69	46.55	45.30	46.33	45.09
Federal metrop. basic wage ..	70/-	69/-	66/-	69/-	71/-	69/-	(b) 70/-
State metrop. basic wage ..	70/-	(h)	74/-	69/6	73/9	(h)	..
1937 : June Quarter—							
Retail Prices—"C" Series (a)	867	846	817	837	859	855	851
Nominal weekly wages (a) ..	862	830	901	806	879	830	854
"Real" weekly wages (a) ..	994	981	1,103	963	1,023	971	1,004
Average weekly hours ..	44.07	46.40	43.68	46.55	45.28	46.32	45.08
Federal metrop. basic wage ..	(c) 72/-	69/-	(c) 68/-	69/-	71/-	69/-	70/-
State metrop. basic wage ..	71/6	(h)	78/-	69/6	73/9	(h)	..
1937 : September Quarter—							
Retail Prices—"C" Series (a)	873	858	819	850	854	859	859
Nominal weekly wages (a) ..	882	859	911	824	900	851	875
"Real" weekly wages (a) ..	1,010	1,001	1,112	969	1,054	991	1,019
Average weekly hours ..	44.07	46.28	43.68	46.55	45.28	46.31	45.05
Federal metrop. basic wage (d)	75/-	72/-	71/-	70/-	72/-	72/-	73/-
Federal metrop. basic wage (e)	75/-	73/-	70/-	71/-	73/-	73/-	73/-
State metrop. basic wage ..	71/6	(h)	78/-	69/6	74/11	(h)	..
1937 : December Quarter—							
Retail Prices—"C" Series (a)	881	864	827	854	850	871	866
Nominal weekly wages (a) ..	915	875	921	852	902	864	896
"Real" weekly wages (a) ..	1,039	1,013	1,114	998	1,061	992	1,035
Average Weekly Hours ..	44.07	46.22	43.68	46.55	45.25	46.24	45.03
Federal metrop. basic wage (f)	78/-	76/-	73/-	73/-	75/-	75/-	75/-
Federal metrop. basic wage (g)	78/-	77/-	74/-	74/-	75/-	75/-	76/-
State metrop. basic wage ..	78/-	(h)	78/-	74/-	74/11	(h)	..
1938 : March Quarter—							
Federal metrop. basic wage (h)	79/-	77/-	74/-	75/-	74/-	76/-	77/-
State metrop. basic wage ..	79/-	(h)	(k) 81/-	74/-	74/11	(h)	..

(a) Weighted average Six Capitals or Six States 1928-29 = 1,000. (b) Payable as from 1st March. (c) Payable as from 1st June. (d) Payable as from first pay-period in July. (e) Payable as from 1st September. (f) Payable as from first pay-period in October. (g) Payable as from 1st December. (h) None declared, but Federal rates followed to a large extent. (i) Payable as from 1st March, 1938. Rates based on December quarter, 1937, index numbers. (j) Payable as from 1st April.

SECURITY PRICE INDEXES : NEW SOUTH WALES.

In comparing movements in the three sets of index-numbers given below, attention should be paid to differences in the methods by which they have been constructed, and in the nature of the companies and the types of shares included in each index. These are outlined in the footnotes to the tables.

(Base : 1928-29 = 1,000.)

Period.		New South Wales : Ordinary Shares.(a)						
		23 Manufacturing and Distributing Companies.	10 Retail Companies.	8 Public Utility Companies.	5 Pastoral and Finance Companies.	5 Insurance Companies.	75 Companies (including 24 Miscel- laneous).	34 Active shares included in foregoing.
1928-29	1,000	1,000	1,000	1,000	1,000	1,000	1,000
1929-30	885	794	969	698	860	851	855
1930-31	518	428	744	425	607	528	552
1931-32	507	395	791	503	595	508	551
1932-33	680	506	1,024	618	711	640	698
1933-34	835	684	1,175	828	877	795	851
1934-35	951	836	1,351	794	1,068	910	956
1935-36	1,079	967	1,445	824	1,178	1,006	1,070
1936-37	1,208	1,110	1,419	926	1,209	1,091	1,163
1936-37—								
November	1,218	1,116	1,412	914	1,235	1,097	1,164
December	1,199	1,119	1,387	909	1,220	1,088	1,149
January	1,231	1,129	1,423	957	1,222	1,113	1,184
February	1,252	1,134	1,443	972	1,220	1,123	1,200
March	1,252	1,137	1,434	975	1,205	1,123	1,202
April	1,237	1,114	1,424	990	1,202	1,113	1,190
May	1,235	1,102	1,427	998	1,199	1,107	1,188
June	1,238	1,076	1,428	983	1,193	1,100	1,180
1937-38—								
July	1,260	1,104	1,437	974	1,189	1,111	1,191
August	1,276	1,100	1,464	988	1,190	1,119	1,201
September	1,250	1,093	1,474	960	1,180	1,104	1,174
October	1,231	1,066	1,467	926	1,148	1,085	1,153
November	1,226	1,045	1,454	897	1,135	1,075	1,143
December	1,220	1,029	1,441	887	1,137	1,068	1,141
January	1,241	1,045	1,445	880	1,131	1,078	1,155
February	1,244	1,043	1,463	862	1,113	1,075	1,146

(a) Compiled by the New South Wales Government Statistician. The index-numbers are based on the prices of the ordinary shares of companies (excluding banking companies) whose business is conducted wholly or largely in New South Wales. They represent unweighted averages of the mean monthly prices per £ of paid-up capital. Adjustments are made where capital is written off or bonus shares issued. Recomputed from original base, par values.

SECURITY PRICE INDEXES : MELBOURNE AND QUEENSLAND.

(Base: 1928-29 = 1,000.)

Period.	Melbourne Stock Exchange.(a)				Queensland : Ordinary Shares.(b)		
	32 Ordinary Shares.	15 Preference Shares.	9 Bank Shares.	4 Silverlead Shares.	12 Industrials.	12 Financial and Trading.	24 Total of foregoing.
1928-29	1,000	1,000	1,000	1,000	1,000	1,000	1,000
1929-30	841	963	859	906	897	948	922
1930-31	529	856	637	457	634	751	691
1931-32	565	926	594	600	654	700	676
1932-33	747	1,124	618	693	763	773	767
1933-34	895	1,235	692	908	913	884	899
1934-35	980	1,333	650	1,017	977	925	952
1935-36	1,098	1,277	702	1,542	1,028	935	982
1936-37	1,303	1,239	749	2,554	1,053	937	996
1936-37—							
November ..	1,323	1,250	741	2,356	1,041	928	986
December ..	1,301	1,238	735	2,681	1,034	918	977
January ..	1,330	1,237	757	3,002	1,044	927	987
February ..	1,358	1,243	779	3,098	1,049	943	997
March ..	1,375	1,254	795	3,430	1,076	952	1,016
April ..	1,337	1,233	791	3,025	1,084	950	1,019
May ..	1,330	1,217	779	2,883	1,083	957	1,022
June ..	1,316	1,219	755	2,802	1,081	946	1,015
1937-38—							
July ..	1,352	1,228	733	2,879	1,066	952	1,011
August ..	1,356	1,247	726	3,055	1,072	963	1,019
September ..	1,315	1,240	701	2,807	1,061	947	1,006
October ..	1,285	1,242	698	2,384	1,067	932	1,001
November ..	1,206	1,235	698	2,062	1,081	945	1,014
December ..	1,221	1,242	687	2,161	1,081	942	1,013
January ..	1,243	1,247	695	2,161	1,107	951	1,031
February ..	1,226	1,251	676	2,018	1,080	951	997

(a) Compiled by the Stock Exchange of Melbourne. The index-numbers of ordinary shares are based on the prices of the shares of companies whose business is more or less national in character. They represent averages (weighted by paid-up capital, with adjustments in the case of bank shares) of the mean monthly prices on the Melbourne Stock Exchange. The preference share index-numbers are based on the reciprocals of average yields. Recomputed from original base, May, 1926. (b) Compiled by the Queensland Bureau of Industry. The index-numbers are based on the prices of the ordinary shares of 21 representative Queensland companies, and the preference shares of three companies whose ordinary shares are inactive. The index-numbers represent unweighted averages. End-of-month values were used until December, 1930, and mean monthly values thereafter. Recomputed from original base, April, 1928.

BUILDING PERMITS : METROPOLITAN AND PROVINCIAL.

£'000.

Monthly Averages during—	Recorded Value of "All Building Operations" in—						
	Common- wealth.	New South Wales.			Victoria.		
		Maximum comparable total (excludes G, J and L).	Metropolis.	Country Municipalities.	7 Shires near Sydney.	Metropolis.	6 provincial Municipalities.
	A.		B.	C.	D.	E.	F.
1928-29 ..	3,118	1,387	357	79	638	19	..
1929-30 ..	2,109	837	304	58	465	16	..
1930-31 ..	621	207	82	23	118	9	..
1931-32 ..	477	83	50	16	155	5	..
1932-33 ..	722	188	88	21	214	9	..
1933-34 ..	1,175	345	137	32	352	13	..
1934-35 ..	1,814	636	223	43	467	14	..
1935-36 ..	2,288	782	312	49	597	21	..
1936-37 ..	2,533	848	362	54	666	29	33
Quarters ended—							
1935-36—							
December ..	2,093	655	319	51	549	16	..
March ..	2,215	818	306	48	594	22	36
June ..	2,470	812	329	45	648	30	31
1936-37—							
September ..	2,684	946	377	73	673	31	41
December ..	2,404	799	326	52	557	24	28
March ..	2,102	650	336	40	555	30	32
June ..	2,937	995	407	52	881	31	31
1937-38—							
September ..	3,006	1,026	410	92	648	55	45
December ..	2,764	1,082	378	83	649	25	41
Months of—							
1937-38—							
November	1,129	593
December	1,153	495
January	905	469

NOTES.

A. This column is the total of all series available continuously since 1928-29 for which information is at present collected at least quarterly. Columns G above and J on the next page are omitted as the information is not available for the earlier years, and column L on the next page is omitted because quarterly figures are not available.

F. Includes the Cities of Geelong West, Mildura and Warrnambool and the Towns of Horsham, Newtown and Chilwell, and Sale.

G. Includes the Cities of Ballarat, Bendigo and Geelong, and Shepparton Borough.

BUILDING PERMITS: METROPOLITAN AND PROVINCIAL—continued.

£'000.

Monthly Averages during—	Recorded Value of "All Building Operations" in—						
	Queensland.			South Australia.		Western Australia.	Tasmania.
	Metropolis.	11 Provincial Cities.	10 Provincial Towns.	Metropolis.	Country Municipalities.	Metropolis.	Metropolis.
	H.	I.	J.	K.	L.	M.	N.
1928-29 ..	203	61	..	151	34	210	13
1929-30 ..	118	53	..	96	29	153	9
1930-31 ..	92	23	..	26	11	33	8
1931-32 ..	73	22	..	18	10	50	5
1932-33 ..	66	33	..	33	18	61	9
1933-34 ..	104	45	..	51	25	82	14
1934-35 ..	138	66	..	97	23	113	17
1935-36 ..	188	74	23	103	34	135	27
1936-37 ..	167	83	25	118	33	168	38
Quarters ended—							
1935-36—							
December ..	178	80	39	120	..	111	14
March ..	138	62	15	84	..	126	17
June ..	239	79	24	108	..	134	46
1936-37—							
September ..	151	80	27	104	..	200	49
December ..	211	87	38	114	..	186	48
March ..	129	79	20	122	..	134	27
June ..	177	84	16	131	..	153	26
1937-38—							
September ..	214	121	37	199	..	201	40
December ..	135	75	26	144	..	161	32
Months of—							
1937-38—							
November ..	138	86	22	152	..	214	63
December ..	104	55	21	134	..	108	15
January ..	226	85	16	191	..	134	35

NOTES.

I. The Cities included are Bundaberg, Cairns, Charters Towers, Gympie, Ipswich, Mackay, Maryborough, Rockhampton, Toowoomba, Townsville, and Warwick.

J. The Towns included are Bowen, Charleville, Dalby, Gladstone, Innisfail, Longreach, Redcliffe, Roma, Southport, and Stanthorpe.

L. The figures relate to financial years as follows:—For Corporations, years ended 30th November up to and including 1934, seven months ended 30th June, 1935, and years ended 30th June, thereafter. For District Councils, years ended 30th June.

BUILDING PERMITS: SIX CAPITAL CITIES AND SUBURBS.(a)

Monthly Averages.	New Dwellings.		Other New Buildings.		Total New Buildings.		Alterations and Additions.	All Building Operations.
	Number.	Value.	Number.	Value.	Number.	Value.	Value.	Value.
		£'000.		£'000.		£'000.	£'000.	£'000.
1928-29(b) ..	1,590	1,529	444	607	2,034	2,136	465	2,601
1929-30(b) ..	982	941	423	389	1,405	1,330	348	1,678
1930-31(b) ..	202	169	250	184	452	353	132	485
1931-32 ..	169	128	203	154	372	282	102	384
1932-33 ..	291	266	222	125	513	391	180	571
1933-34 ..	500	509	109	199	609	708	240	948
1934-35 ..	763	800	139	320	902	1,120	348	1,468
1935-36 ..	1,025	1,028	165	430	1,190	1,458	374	1,832
1936-37 ..	1,122	1,105	156	488	1,278	1,593	412	2,005
1936-37—								
November ..	1,042	1,089	154	453	1,196	1,542	385	1,927
December ..	811	851	119	482	930	1,333	324	1,657
January ..	1,013	952	134	474	1,147	1,426	314	1,740
February ..	989	891	115	225	1,104	1,116	355	1,471
March ..	1,053	961	133	336	1,186	1,297	407	1,704
April ..	1,174	1,253	174	603	1,348	1,856	466	2,322
May ..	1,153	1,191	167	632	1,320	1,823	510	2,333
June ..	1,308	1,292	177	741	1,485	2,033	497	2,530
1937-38—								
July ..	1,337	1,272	156	772	1,493	2,044	367	2,411
August ..	1,527	1,526	147	493	1,674	2,019	389	2,408
September ..	1,405	1,364	165	370	1,570	1,734	437	2,171
October ..	1,466	1,490	146	431	1,612	1,921	391	2,312
November ..	1,360	1,298	171	492	1,531	1,790	500	2,290
December ..	996	1,048	108	616	1,104	1,664	345	2,009
January ..	1,174	1,144	132	309	1,306	1,453	507	1,960

(a) Includes Government buildings in Brisbane and Suburbs, and those erected by contract in Hobart and Suburbs.
 (b) Partly estimated in respect of the City of Sydney.

MISCELLANEOUS INDEXES OF PRODUCTIVE ACTIVITY.

The following table gives particulars of the physical quantity of production of certain items which are at present available on a monthly basis. Efforts are being made to extend the field of monthly production statistics.

Monthly Averages.	Metals.				Butter.	Electricity and Gas.	
	Pig Iron : Index of Production. (a)	Ingot Steel : Index of Production. (a)	Zinc, refined : Index of Production.	Gold. Produced.	Factory Production.	Melbourne : Energy supplied for all purposes except traction. (b)	Sydney : Index of Sales of Gas and Electricity.
	1928-29 = 1,000.	1928-29 = 1,000.	1928-29 = 1,000.	Fine oz.	000 lb.	Millions of K.W.H.	(c)
1928-29 ..	1,000	1,000	1,000	36,496	22,796
1929-30 ..	669	728	946	36,844	23,576	..	1,036
1930-31 ..	505	528	856	42,463	27,732	..	971
1931-32 ..	412	512	825	55,683	30,889	28.0	951
1932-33 ..	729	907	839	64,034	33,222	30.9	972
1933-34 ..	1,057	1,198	831	72,680	35,753	33.9	1,001
1934-35 ..	1,515	1,610	915	70,381	37,247	37.9	1,046
1935-36 ..	1,699	1,896	1,100	88,280	34,232	40.9	1,107
1936-37 ..	1,974	2,420	1,089	108,173	(e)31,037	44.0	1,152
1936-37—			(d)		(e)		
November ..	1,755	2,254	1,089	103,174	38,121	41.5	1,159
December ..	1,970	2,233	1,083	124,722	37,134	39.7	1,164
January ..	2,035	2,469	1,081	93,611	42,696	39.2	1,145
February ..	1,962	2,589	1,084	109,966	35,907	39.2	1,154
March ..	1,987	2,541	1,082	105,166	37,319	42.0	1,152
April ..	1,983	2,502	1,080	110,738	30,801	46.3	1,192
May ..	1,993	2,703	1,085	115,518	23,387	50.2	1,167
June ..	1,939	2,508	1,090	116,016	17,660	50.2	1,242
1937-38—							
July ..	1,914	2,451	1,088	114,141	17,565	5.9	1,219
August ..	2,024	2,616	1,090	117,067	21,353	48.4	1,202
September ..	1,925	2,433	1,083	117,664	30,485	47.1	1,184
October ..	1,832	2,508	1,077	e114,687	40,416	47.9	1,194
November ..	1,914	2,586	1,080	e128,124	49,361	45.6	1,236
December ..	1,970	2,601	1,085	e138,864	50,679	45.0	1,216
January ..	1,945	2,523	1,085	e112,880	46,000	41.2	1,194
February ..	1,977	2,500	1,084	e126,840	..	44.5	1,215

(a) Revised series, now based throughout on total production. (b) Includes all central generating stations. (c) The base for each month is the average sales in the corresponding months of the three years 1929 to 1931; i.e. seasonal variations are removed. Based on units of 3,412 B.T.U. (d) Estimated on the basis of production by the Electrolytic Zinc Company Ltd. (e) Subject to revision.

MAINLAND STATE RAILWAYS : FREIGHT, PASSENGERS AND REVENUE.

The following table shows statistics of freight and passengers carried and of revenue earned on the five Mainland State Railways, excluding particulars of the South Brisbane—Border Section of the Uniform Gauge Line which are not available monthly.

The daily average number of passenger journeys is obtained by dividing the monthly totals by the total number of days in the month.

Period.	Freight Carried.		Passenger Journeys Daily Average.	Gross Monthly Revenue.	Net Monthly Revenue.
	Net Ton Miles Daily Average.	Average haul per ton.			
	'000.	Miles.	'000.	£'000.	£'000.
1928-29	12,404	114.1	1,013	3,947	812
1929-30	11,489	117.6	990	3,641	539
1930-31	10,797	129.1	851	3,087	513
1931-32	10,899	133.3	823	2,974	682
1932-33	11,239	133.1	858	3,008	773
1933-34	10,588	125.8	891	2,932	748
1934-35	11,653	124.0	969	3,163	843
1935-36	12,123	125.2	999	3,248	855
1936-37	12,785	125.9	1,028	3,395	884
1936-37—					
November	12,748	120.5	1,061	3,374	843
December	13,488	134.1	992	3,617	1,126
January	14,087	136.2	995	3,565	1,162
February	14,105	135.5	1,049	3,146	813
March	13,177	128.6	1,069	3,570	1,134
April	14,311	130.2	1,019	3,537	1,069
May	13,509	133.7	1,074	3,425	775
June	12,189	122.1	1,030	3,156	—72
1937-38—					
July	12,085	119.7	1,024	3,343	837
August	12,217	116.5	1,032	3,435	860
September	12,746	116.2	1,028	3,577	917
October	13,093	117.2	1,021	3,679	1,051
November	13,083	115.9	1,071	3,662	888
December	15,695	134.1	1,019	4,006	1,322

MAINLAND RAILWAYS : FREIGHT TONNAGES CARRIED.

The following table shows statistics of freight tonnages carried by the Mainland State and Commonwealth Railways.

The daily averages for freight tonnages are obtained by dividing monthly tonnages by the number of days in the month, excluding Sundays, Xmas Day and Good Friday.

Freight totals are obtained by adding together the total freight tonnages carried on the Commonwealth and State Railways and deducting the sum of the interstate tonnages carried in New South Wales and South Australia. This avoids double-counting except to a negligible extent.

Period.	Daily Average Net Tonnage Carried—Mainland State and Commonwealth Railways.(a)									
	Total Tonnage Carried.		Coal and Coke.	Other Minerals.	Wheat.	Other Grain and Flour.	Wool.	Live-stock.	Fruit.	All Other.
	Index 1928-29 = 100.	Tons.								
1928-29 ..	100	107,511	23,482	17,420	11,764	4,405	1,301	6,349	1,585	41,205
1929-30 ..	89	96,194	21,075	15,186	8,075	4,118	1,222	6,648	1,544	38,326
1930-31 ..	77	82,487	18,209	8,478	15,422	4,111	1,185	5,478	1,538	28,066
1931-32 ..	75	80,824	17,693	5,899	16,447	4,520	1,295	5,069	1,440	28,461
1932-33 ..	78	83,467	19,143	7,155	15,190	4,482	1,342	5,173	1,548	29,434
1933-34 ..	77	83,227	20,518	7,763	10,605	4,482	1,178	5,830	1,641	31,210
1934-35 ..	87	92,948	23,960	9,423	11,692	4,957	1,239	6,188	1,708	33,781
1935-36 ..	89	95,765	25,474	9,516	11,505	4,505	1,164	6,477	1,657	35,467
1936-37 ..	93	100,421	27,528	9,699	11,024	4,321	1,224	6,931	1,626	38,068
1936-37—										
November	98	105,004	28,265	10,602	5,861	4,147	2,058	9,270	1,204	43,597
December	90	96,180	25,234	8,290	16,180	5,337	619	7,022	1,218	32,280
January ..	96	102,674	25,655	8,918	27,463	4,439	249	6,753	1,327	27,870
February	96	102,979	26,968	9,030	19,627	4,465	408	7,072	2,137	33,272
March ..	94	101,083	27,090	8,978	10,703	4,712	574	6,746	2,871	39,409
April ..	101	108,629	28,495	10,994	9,688	4,566	754	7,184	2,635	44,313
May ..	93	100,332	26,880	11,187	12,175	4,144	590	6,767	1,577	37,012
June ..	92	98,344	31,337	11,161	8,800	3,910	314	6,104	1,283	35,435
1937-38—										
July ..	93	100,014	30,207	11,503	6,554	4,515	736	5,901	1,314	39,284
August ..	96	103,491	30,475	11,240	4,489	3,797	2,106	6,544	1,123	43,717
September	101	108,590	30,500	12,848	4,108	4,147	3,456	7,694	1,195	44,642
October ..	102	109,963	29,815	11,633	5,050	4,176	3,238	9,942	1,194	44,915
November	104	111,318	31,210	12,817	7,898	3,938	2,312	10,139	1,312	41,692
December	108	115,680	29,365	10,434	26,732	5,100	676	7,607	1,379	44,387

(a) Revised to include particulars of tonnage carried on the South Brisbane—Border Section of the Uniform Gauge Line, previously not available.

INTERSTATE SHIPPING CARGOES.

Monthly Averages.	Tons (weight and measurement combined) shipped from—						
	New South Wales.	Victoria.	Queensland.	South Australia.	Western Australia.	Tasmania.	Total Australia.
	'000.	'000.	'000.	'000.	'000.	'000.	'000.
1928-29 ..	210	60	33	104	8	48	463
1929-30 ..	150	58	45	81	8	39	381
1930-31 ..	169	47	28	60	3	35	342
1931-32 ..	164	49	26	56	3	36	334
1932-33 ..	191	58	30	84	4	39	406
1933-34 ..	205	66	31	103	6	45	456
1934-35 ..	231	74	32	150	7	55	549
1935-36 ..	250	80	37	151	7	62	587
1936-37 ..	284	92	39	184	8	68	675
1936-37—							
November ..	270	97	47	172	16	55	657
December ..	288	85	33	187	9	52	654
January ..	241	82	31	199	7	61	621
February ..	255	82	23	178	4	57	599
March ..	273	96	21	188	10	83	671
April ..	328	105	22	197	7	94	753
May ..	292	92	28	181	8	78	679
June ..	316	101	42	183	5	82	729
1937-38—							
July ..	327	114	47	193	7	80	768
August ..	294	95	43	217	9	72	730
September ..	310	96	68	201	6	67	748
October ..	343	121	60	223	8	70	825
November ..	311	108	49	212	8	69	757
December ..	292	87	28	223	6	64	700
January ..	240	97	17	196	3	61	614

OVERSEA SHIPPING CARGOES.

Monthly Averages.	Discharged.			Shipped.		
	Tons Weight.	Tons Measure.	Total (Tons W and M).	Tons Weight.	Tons Measure.	Total (Tons W and M).
1928-29	'000. 300	'000. 206	'000. 506	'000. 378	'000. 63	'000. 441
1929-30	362	192	554	329	54	383
1930-31	198	87	285	484	53	537
1931-32	173	74	247	496	61	557
1932-33	223	102	325	470	65	535
1933-34	217	116	333	355	61	416
1934-35	248	143	391	435	72	507
1935-36	295	162	457	434	75	509
1936-37	304	169	473	419	78	497
1936-37—						
November ..	307	222	529	378	60	438
December ..	345	159	504	453	55	508
January ..	351	162	513	466	66	532
February ..	212	112	324	456	56	512
March ..	312	185	497	443	130	573
April ..	264	194	458	387	153	540
May ..	278	161	439	487	91	578
June ..	315	175	490	403	74	477
1937-38—						
July ..	328	211	539	385	85	470
August ..	301	192	493	338	83	421
September ..	366	169	535	335	60	395
October ..	438	237	675	390	84	474
November ..	369	248	617	418	72	490
December ..	406	238	644	539	80	619
January ..	368	188	556	425	50	475

WHOLESALE TRADE.

Some indication of fluctuations in the value of wholesale trade is given by the returns made under the Sales Tax Acts, but care must be exercised in interpreting the figures. The returns do not relate to all wholesale trade, nor do they cover a constant proportion of all trade. The effects of legislative and administrative changes on the recorded values of taxable and exempt goods respectively are somewhat uncertain, although total recorded sales are affected in smaller degree by such changes. Insufficient information is available to enable adjustments to be made to the crude figures on this account. Except where such changes are indicated, the "preliminary" figures are fairly comparable with one another, but they are not directly comparable with the "final" figures.

An index of activity in New South Wales is afforded by monthly returns of the sales of 42 large factories.

Monthly Averages.	Commonwealth.			New South Wales.
	Net Sales Recorded under Sales Tax Acts.(a)			Value of Sales of 42 large factories.
	Taxable Goods.	Exempt Goods.	Taxable and Exempt Goods.	
	£'000. (b)	£'000. (b)	£'000. (b)	£'000.
1930-31	14,705	16,069	30,774	2,065
1931-32 (d)	12,632	15,873	28,505	1,999
1932-33 (d)	13,071	16,075	29,146	2,098
1933-34 (d)	13,442	16,334	29,776	2,248
1934-35 (d)	14,392	17,272	31,664	2,427
1935-36 (d)	16,007	18,632	34,639	2,661
1936-37 (d)	2,912
1936-37—	(c)	(c)	(c)	
November	14,824	22,418	37,242	3,022
December	13,465	20,342	33,807	3,070
January	11,951	19,976	31,927	2,616
February	12,865	20,099	32,964	2,853
March	15,163	23,364	38,527	3,147
April	14,768	25,258	40,026	3,106
May	13,931	22,838	36,769	2,938
June	13,310	21,236	34,546	2,958
1937-38—				
July	13,414	22,014	35,428	3,064
August	14,313	21,890	36,203	3,025
September	15,150	21,786	36,936	3,231
October	15,580	22,667	38,247	3,147
November	16,199	24,158	40,357	3,437
December	15,264	23,057	38,321	3,452
January	2,766

(a) The Act came into operation on 18th August, 1930, the rate of tax being 2½ per cent. It was raised to 6 per cent. on 11th July, 1931, reduced to 5 per cent. on 26th October, 1933, and to 4 per cent. on 11th September, 1936. With certain specified exemptions, all goods sold in Australia, including imports, are taxable. (b) "Final" figures. (c) "Preliminary" figures. (d) The list of exemptions was extended as from 11th July, 1931; 2nd September, 1932; 11th November, 1932; 27th October, 1933; 1st August, 1934; 13th December, 1934; 25th October, 1935; and 26th September, 1936.

RETAIL TRADE.

Statistics of retail sales are collected only in two States. In New South Wales the Retail Traders' Association Research Bureau, in co-operation with the Commonwealth Bank, collects returns from a number of large Sydney stores. In Queensland returns are collected by the Bureau of Industry from twelve large department stores in Brisbane and their branches in country towns. Because of the relatively rapid development of chain store business, it is uncertain to what extent the department store figures are representative of all retail trade.

VALUE OF RETAIL SALES: PERCENTAGE CHANGE ON PREVIOUS YEAR.

Period.	Sydney.					Queensland.				
	Average of 3 months ended—				Year.	Average of 3 months ended—				Year.
	September.	December.	March.	June.		September.	December.	March.	June.	
1928-29	+1.9	+2.6	+2.1	+3.6	+2.6
1929-30	+4.1	-0.2	-4.4	-7.3	-2.0
1930-31	-15.4	-10.9	-15.7	-17.4	-14.7
1931-32	-7.3	-7.0	-2.2	+1.3	-4.0
1932-33 ..	+12.4	+3.8	-0.6	-1.6	+3.5	-0.5	-2.2	-4.2	-0.1	-1.7
1933-34 ..	-1.8	+3.3	+3.3	+7.7	+3.2	-4.3	+1.8	+5.7	+7.3	+2.6
1934-35 ..	+9.8	+6.3	+3.2	+7.1	+6.6	+4.8	+3.3	+2.8	+1.1	+2.9
1935-36 ..	+5.0	+8.3	+7.6	+6.5	+6.9	-1.3	+1.0	-0.7	-1.2	-0.5
1936-37 ..	+6.5	+4.6	+4.5	+5.7	+5.3	+0.8	-2.6	-3.0	-1.3	-1.5
1937-38 ..	+8.1	+11.7	+1.4	+6.1
	Month of—		Average of 3 months ended—			Month of—		Average of 3 months ended—		
1936-37—										
November		-3.7		+3.7		-3.6		-1.5		
December		+9.2		+4.6		-3.1		-2.6		
January ..		+1.8		+3.2		-2.1		-3.0		
February		+3.4		+5.5		-3.9		-3.0		
March ..		+8.2		+4.5		-3.1		-3.0		
April ..		+8.1		+6.6		-5.2		-4.1		
May ..		+2.0		+5.9		-1.0		-3.0		
June ..		+7.4		+5.7		+2.0		-1.3		
1937-38—										
July ..		+5.3		+4.8		+1.5		+0.8		
August ..		+10.5		+7.5		+0.8		+1.5		
September		+9.6		+8.1		+1.8		+1.4		
October ..		+4.5		+8.0		+4.9		+2.5		
November		+17.0		+10.3		+2.6		+3.1		
December		+13.2		+11.7		+9.3		+6.1		
January ..		+3.7		+11.9		+4.1		+5.9		

AUSTRALIAN TRADING BANKS.(a)

£A000.

Quarter.	Business within Australia.							£A000 London Funds. (c)	Total Cash + Treasury Bills + London Funds.
	Deposits.			Advances.	Government and Municipal Securities. (b)	Cash.	Treasury Bills.		
	Bearing Interest.	Not Bearing Interest.	Total.						
1928—4th	169,070	106,135	275,205	236,625	16,642	52,894		27,474	80,368
1929— "	178,402	96,778	275,180	269,465	12,819	42,499	1,470	9,269	53,238
1930— "	177,523	83,189	260,712	253,156	11,833	39,481	5,262	15,694	60,437
1931— "	180,624	86,640	267,264	233,681	9,496	42,660	20,731	31,378	94,769
1932— "	186,872	86,818	273,690	231,605	10,700	41,396	37,961	23,627	102,984
1933— "	183,960	93,918	277,878	237,468	16,784	42,615	27,642	26,564	96,821
1934— "	188,972	102,255	291,227	246,775	21,661	46,865	23,757	24,878	95,500
1935— "	178,791	109,236	288,027	259,162	19,055	33,495	24,378	21,763	79,636
1936— "	179,812	109,986	289,798	265,893	14,034	31,107	23,234	26,619	80,960
1937—1st	186,015	119,794	305,809	259,437	14,634	37,430	26,039	(d)	(d)
2nd	192,756	119,196	311,952	259,711	17,155	38,351	25,088	(d)	(d)
3rd	192,316	114,754	307,070	264,127	19,713	36,889	22,530	(d)	(d)
4th	192,036	120,825	312,861	272,637	21,100	38,412	20,900	(d)	(d)

Quarter.	Percentages of various categories of assets to total deposits.					Percentage Non-interest- bearing to Total Deposits.
	Cash in Australia.	Cash + Treasury Bills.	Cash + Treasury Bills + London Funds.	Advances.	Advances + Government and Municipal Securities in Australia. (b)	
	%	%	%	%	%	
1928—4th	19.22	19.22	29.20	85.98	92.03	38.57
1929— "	15.44	15.98	19.35	97.92	102.58	35.17
1930— "	15.14	17.16	23.18	97.10	101.64	31.91
1931— "	15.96	23.72	35.46	87.43	90.99	32.42
1932— "	15.13	29.00	37.63	84.62	88.53	31.72
1933— "	15.34	25.28	34.84	85.46	91.50	33.80
1934— "	16.09	24.25	32.79	84.74	92.17	35.11
1935— "	11.63	20.09	27.65	89.98	96.59	37.93
1936— "	10.73	18.75	27.94	91.75	96.59	37.95
1937—1st	12.24	20.75	(d)	84.83	89.62	39.18
2nd	12.29	20.34	(d)	83.26	88.75	38.20
3rd	12.01	19.35	(d)	86.02	92.44	37.37
4th	12.28	18.96	(d)	87.14	93.89	38.62

(a) Nine trading banks, including banks subsequently amalgamated with any of the present nine.
Bills. (c) Excluding Australian Government Securities. (d) Not yet available.

(b) Excluding Treasury

COMMONWEALTH BANK OF AUSTRALIA.

£A000.

Quarter.	General Banking Department.						Note Issue and General Banking Department.		Notes held outside Commonwealth Bank.		
	Business within Australia.						Sterling Reserve and Short Call Money in London.	Net London Funds. (£)			
	Deposits.			Advances and Short Term Loans.							
	Bearing Interest.	Not Bearing Interest.	Total.	Balances Due to Other Banks.	Advances, &c.	Short term Loans.				Total.	Government and Municipal Securities.
1928—4th ..	9,584	16,195	25,779	12,498	(a)	(a)	14,710	13,234	41,177	22,278	41,921
1929	14,176	15,453	29,629	8,413	(a)	(a)	18,077	17,323	28,715	11,399	39,062
1930	13,551	7,647	21,198	20,824	12,494	3,901	16,395	22,501	21,762	10,325	39,505
1931	18,399	8,924	27,323	22,233	12,025	10,685	22,710	19,713	28,611	10,089	46,767
1932	29,232	6,088	35,320	23,189	(b)7,457	8,955	16,412	30,122	36,952	19,309	43,359
1933	32,236	7,237	39,473	25,060	6,126	12,614	18,740	36,105	42,327	40,108	42,749
1934	33,061	10,530	43,591	31,358	6,792	12,498	19,290	36,082	51,514	40,091	42,980
1935	31,323	11,307	42,630	19,509	8,409	8,027	16,436	36,103	39,859	28,841	43,239
1936	34,284	16,436	50,720	17,738	9,879	9,979	18,858	36,381	37,070	29,100	43,421
1937—1st ..	33,895	14,977	48,872	23,695	11,135	9,520	20,655	38,258	37,440	(f)	43,256
2nd	37,635	16,535	54,170	24,459	11,312	5,038	16,350	38,589	47,499	(f)	42,982
3rd	41,375	15,244	56,619	23,094	12,029	3,912	15,941	38,399	49,643	(f)	43,246
4th	-1,199	17,360	58,559	24,449	(c)12,705	(d)	(d)	-41,646	51,140	(f)	45,647

(a) Not available. (b) This fall in balances was due to a change of system by which credit balances allowed as "set-offs" are deducted from gross advances. (c) The Commonwealth Bank now includes Short Term Loans, other than Treasury Bills, under Advances. (d) Not now available for publication. (e) Includes Treasury Bills, previously included under Short Term Loans of which particulars are not now available for publication. (f) Not yet available. (g) Last Monday in quarter.

ALL CHEQUE-PAYING BANKS.

(Including Commonwealth Bank.)

Quarter.	Deposits.			Advances.	Government and Municipal Securities. (including Treasury Bills) (c)	Percentage Non-interest-bearing to Total Deposits (b)	Percentage Advances to Total Deposits. (b)
	Bearing Interest. (a)	Not Bearing Interest.	Total.				
1928—4th ..	£'000.	£'000.	£'000.	£'000.	£'000.	%	%
1929	192,793	125,219	318,012	271,026	37,041	39.7	83.6
1929	208,274	114,863	323,137	310,029	39,383	36.0	94.4
1930	208,951	92,893	301,844	291,213	49,486	32.2	94.1
1931	213,811	97,758	311,569	266,481	65,022	32.0	84.0
1932	221,823	93,783	315,606	260,130	92,131	29.7	78.0
1933	221,872	101,956	323,828	264,694	98,936	31.5	77.5
1934	227,926	113,914	341,840	274,182	100,295	33.3	76.2
1935	216,522	121,950	338,472	290,002	93,527	36.0	81.6
1936	220,738	128,134	348,872	297,517	88,132	36.7	81.3
1937—1st ..	226,488	136,732	363,220	293,788	93,224	37.6	77.1
2nd	236,788	137,922	374,710	294,274	89,631	36.7	74.6
3rd	240,088	131,814	371,902	298,829	88,813	35.4	76.4
4th	239,630	140,000	379,630	308,435	87,438	36.8	77.3

(a) Includes Inscribed Deposit Stock of E.S. and A. and Queensland National Banks. (b) In computing the ratios the figures relating to the Rural Bank of New South Wales have been excluded. (c) Prior to 4th quarter of 1937, includes Short Term Loans, other than Treasury Bills, of the Commonwealth Bank.

BANK CLEARINGS.

In the absence of statistics of debits to customers' accounts, bank clearings form a useful index of the money-value of cheque payments. Since they do not include cheques deposited in the banks on which they are drawn, the figures are not exhaustive, and their comparability is sometimes impaired by the effects of banking amalgamations. Cheque clearings connected with the redemption or issue of Treasury Bills have been excluded from the following table, but adjustments have not been made for other sporadic transactions concerned with public finance.

£'000.

Weekly Averages.	Sydney.	Melbourne.	Brisbane.	Adelaide.	Perth.	Hobart.	Six Capitals.
1928-29	20,064	15,408	3,777	3,093	2,188	542	45,072
1929-30	18,684	14,662	3,566	2,747	1,994	490	42,143
1930-31	15,191	11,768	2,966	2,019	1,447	381	33,772
1931-32	11,095	10,807	2,686	1,919	1,426	357	28,290
1932-33	11,876	11,577	2,747	2,080	1,422	378	30,080
1933-34	13,362	12,723	2,992	2,214	1,575	411	33,277
1934-35	13,919	13,004	3,385	2,386	1,715	426	34,835
1935-36	15,522	14,208	3,528	2,592	1,866	507	38,223
1936-37	17,247	15,592	3,753	2,900	1,989	559	42,040
1936-37—							
November ..	19,010	16,681	3,680	2,908	2,140	491	44,910
December ..	18,265	16,346	3,753	2,883	2,298	513	44,058
January ..	17,018	15,010	3,325	2,734	1,986	442	40,515
February ..	19,493	16,321	3,478	3,004	2,213	773	45,282
March ..	17,060	17,307	3,600	3,328	1,960	568	43,823
April ..	18,708	17,706	3,706	3,372	2,033	684	46,209
May ..	18,064	15,628	4,112	3,126	1,882	641	43,453
June ..	17,146	14,852	4,130	2,962	1,831	528	41,449
1937-38—							
July ..	18,016	16,032	4,411	2,793	1,925	539	43,716
August ..	16,009	14,176	3,848	2,590	1,775	526	38,924
September ..	18,212	15,303	4,285	2,842	1,871	520	43,033
October ..	18,693	16,978	4,301	3,122	2,074	537	45,705
November ..	18,347	16,357	3,827	2,995	2,105	521	44,152
December ..	18,992	18,569	3,845	3,353	2,465	598	47,822
January ..	15,569	14,377	3,523	2,766	2,226	658	39,119
February ..	18,904	17,397	4,247	3,409	2,468	518	46,943

AMOUNTS ON DEPOSIT IN SAVINGS BANKS.

Amount on deposit at end of—	New South Wales.	Victoria.	Queensland.	South Australia.	Western Australia.	Tasmania.	Australia (a)
	£'000.	£'000.	£'000.	£'000.	£'000.	£'000.	£'000.
1928-29 ..	85,728	72,707	24,076	25,228	11,609	5,811	225,486
1929-30 ..	82,465	69,367	23,901	24,012	11,729	5,699	217,511
1930-31 ..	69,811	63,243	22,354	21,422	10,867	5,366	193,375
1931-32 ..	71,648	65,680	22,952	21,567	10,218	5,587	197,966
1932-33 ..	72,308	67,814	23,453	22,515	10,064	5,865	202,282
1933-34 ..	75,714	69,971	24,834	23,438	10,399	6,039	210,676
1934-35 ..	77,906	72,019	26,197	24,185	10,929	6,430	217,949
1935-36 ..	80,000	73,890	27,132	25,309	11,517	6,818	224,962
1936-37 ..	81,952	79,720	27,304	26,506	11,835	7,215	230,851
1936-37—							
November ..	79,966	73,863	27,628	25,473	11,684	6,908	225,826
December ..	79,467	73,273	27,347	25,434	11,517	6,859	224,195
January ..	79,740	73,569	27,103	25,558	11,493	6,889	224,653
February ..	78,838	73,814	26,940	25,652	11,481	7,037	225,064
March ..	79,770	73,892	26,795	25,716	11,497	7,043	225,029
April ..	79,961	74,302	26,700	25,857	11,543	7,080	225,755
May ..	79,979	74,292	26,606	25,784	11,574	7,114	225,663
June ..	81,952	75,720	27,304	26,506	11,835	7,215	230,851
1937-38—							
July ..	81,949	75,808	27,462	26,530	11,797	7,276	231,140
August ..	82,229	76,116	27,621	26,485	11,838	7,412	232,029
September ..	82,467	76,294	27,972	26,457	11,892	7,434	232,845
October ..	82,960	76,813	28,267	26,510	11,945	7,465	234,297
November ..	83,227	77,243	28,534	26,511	12,007	7,470	235,329
December ..	82,819	76,580	28,195	26,357	11,821	7,402	233,501
January ..	83,283	76,847	27,895	26,472	11,806	7,453	234,082
February ..	83,698	77,228	27,749	26,547	11,822	7,566	234,940

(a) Including Territories.

INTEREST RATES AND BOND YIELDS : AUSTRALIA.

Period.	Australian Trading Banks. Interest on Fixed Deposits.				Common-wealth Savings Bank. Deposits (maximum rate).	Yield on Australian Securities.				
	3 months.	6 months.	12 months.	24 months.		Treasury Bills.	Australian Consolidated Loans.			
							All Issues.	4% 1941.	4% 1944 and 1947.	4% 1950, '53, '55, '57, '59 and 1961.
	%	%	%	%	%	%	%	%	%	
1928-29 ..	4.0	4.0	4.5	5.0	3.9	4.50	5.35
1929-30 ..	4.2	4.3	4.7	5.1	4.0	5.22	5.71
1930-31 ..	4.5	4.8	5.0	5.3	4.0	5.88	(a)
1931-32 ..	3.0	3.4	3.8	4.1	3.0	4.17	(b) 4.99	(b) 5.24	(b) 5.02	(b) 4.77
1932-33 ..	2.2	2.7	3.0	3.2	2.6	3.35	3.98	3.89	3.93	3.96
1933-34 ..	2.0	2.4	2.7	2.9	2.5	2.44	3.53	3.41	3.50	3.64
1934-35 ..	1.3	1.8	2.3	2.6	2.1	1.95	3.32	3.19	3.28	3.45
1935-36 ..	1.3	1.6	2.4	2.6	2.0	1.75	3.76	3.72	3.76	3.84
1936-37 ..	2.0	2.5	2.75	3.0	2.0	1.75	3.89	3.81	3.88	3.95
1936-37—										
November	2.0	2.5	2.75	3.0	2.0	1.75	3.94	3.92	3.90	3.94
December	2.0	2.5	2.75	3.0	2.0	1.75	4.00	3.93	4.00	4.02
January ..	2.0	2.5	2.75	3.0	2.0	1.75	4.01	3.85	3.95	4.02
February	2.0	2.5	2.75	3.0	2.0	1.75	4.03	3.91	3.98	4.04
March ..	2.0	2.5	2.75	3.0	2.0	1.75	4.00	3.93	3.94	4.02
April ..	2.0	2.5	2.75	3.0	2.0	1.75	3.92	3.78	3.84	3.98
May ..	2.0	2.5	2.75	3.0	2.0	1.75	3.85	3.63	3.80	3.94
June ..	2.0	2.5	2.75	3.0	2.0	1.75	3.72	3.52	3.62	3.84
1937-38—										
July ..	2.0	2.5	2.75	3.0	2.0	1.75	3.73	3.63	3.71	3.85
August ..	2.0	2.5	2.75	3.0	2.0	1.75	3.75	3.68	3.76	3.85
September	2.0	2.5	2.75	3.0	2.0	1.75	3.81	3.77	3.79	3.86
October..	2.0	2.5	2.75	3.0	2.0	1.75	3.78	3.73	3.75	3.85
November	2.0	2.5	2.75	3.0	2.0	1.75	3.65	3.60	3.57	3.76
December	2.0	2.5	2.75	3.0	2.0	1.75	3.63	3.48	3.62	3.75
January ..	2.0	2.5	2.75	3.0	2.0	1.75	3.56	3.41	3.47	3.70
February	2.0	2.5	2.75	3.0	2.0	1.75	3.53	3.23	3.49	3.71
March ..	2.0	2.5	2.75	3.0	2.0	1.75	3.59	3.29	3.55	3.70

(a) During this year the bond market was disorganized.

(b) Nine months October to June.

RATES OF INTEREST ON FIRST MORTGAGES : NEW SOUTH WALES.

Month.	First Mortgages Registered. Proportion of total amount for which rates are disclosed.				
	Rate of Interest per cent. per annum.				
	4½ or under.	Over 4½-5.	Over 5-6.	Over 6-7.	Over 7.
	%	%	%	%	%
1936—November ..	30	45	21	3	1
December ..	33	38	21	6	2
1937—January ..	36	38	23	2	1
February ..	22	58	15	3	2
1937—November ..	32	44	21	2	1
December ..	33	36	23	7	1
1938—January ..	29	41	24	5	1
February ..	36	42	18	2	2

EXCHANGE RATES AND GOLD PRICES.

Period.	Exchange Rates.			Gold Prices.	
	Australia on London.(a)	London on New York.	Australia on New York.(b)	Australia : Export Parity.	London.
	£A. per £100 stg.	£ per £ stg.	£ per £A.	£A. per fine oz.	£ stg. per fine oz.
1928-29	100.75	4.852	4.828	4.217	4.248
1929-30	102.94	4.863	4.713	4.312	4.248
1930-31	118.00	4.861	4.111	4.961	4.248
1931-32	127.36	3.903	3.059	6.765	5.359
1932-33	125.25	3.529	2.771	7.493	6.066
1933-34	125.25	4.934	3.898	8.131	6.584
1934-35	125.25	4.925	3.917	8.741	7.077
1935-36	125.25	4.957	3.940	8.683	7.035
1936-37	125.25	4.939	3.929	8.691	7.041
1936-37—					
November	125.25	4.888	3.886	8.780	7.113
December	125.25	4.907	3.902	8.746	7.085
January	125.25	4.908	3.904	8.745	7.085
February	125.25	4.894	3.892	8.771	7.105
March	125.25	4.885	3.884	8.786	7.118
April	125.25	4.916	3.904	8.721	7.065
May	125.25	4.939	3.929	8.678	7.030
June	125.25	4.935	3.925	8.675	7.028
1937-38—					
July	125.25	4.966	3.950	8.642	7.001
August	125.25	4.983	3.964	8.612	6.977
September	125.25	4.961	3.941	8.663	7.018
October	125.25	4.956	3.941	8.673	7.026
November	125.25	4.994	3.972	8.650	7.008
December	125.25	4.997	3.975	8.627	6.989
January	125.25	5.000	3.977	8.617	6.981
February	125.25	5.018	3.991	8.626	6.988

(a) Average of buying and selling rates for Telegraphic Transfers. date. Computed through London prior to that date.

(b) Selling rate. Direct quotations from July, 1932, to

COMMONWEALTH AND STATES: REVENUE AND EXPENDITURE.

The following tables have been prepared from information published in the monthly statements issued by each Treasury.

Government of—	Eight months ended 28th February.					
	1936-37.			1937-38.		
	Revenue.	Expenditure.	Surplus (+) or Deficit (-).	Revenue.	Expenditure.	Surplus (+) or Deficit (-).
	£'000.	£'000.	£'000.	£'000.	£'000.	£'000.
New South Wales (a) ..	32,518	34,644	-2,126	34,650	37,720	-3,070
Victoria	13,270	15,870	-2,600	13,628	16,356	-2,728
Queensland	9,413	10,255	- 842	10,080	10,759	- 679
South Australia ..	6,644	7,592	- 948	7,185	8,070	- 885
Western Australia ..	6,361	6,817	- 456	6,712	7,163	- 451
Tasmania	1,982	2,144	- 162	2,046	2,262	- 216
Six States	70,188	77,322	-7,134	74,301	82,330	-8,029
Commonwealth ..	50,288	52,096	-1,808	53,639	(c) 54,886	-1,247
Grand Total (b) ..	113,799	122,741	-8,942	121,317	130,593	-9,276

Government of—	Year 1936-37.			Estimate year 1937-38.		
	Revenue.	Expenditure.	Surplus (+) or Deficit (-).	Revenue.	Expenditure.	Surplus (+) or Deficit (-).
	£'000.	£'000.	£'000.	£'000.	£'000.	£'000.
New South Wales (a) ..	55,186	55,051	+ 135	58,876	58,867	+ 9
Victoria	27,219	27,198	+ 21	27,007	26,995	+ 12
Queensland	16,535	16,815	- 280	17,047	17,377	- 330
South Australia	11,739	11,600	+ 139	12,249	(d) 12,298	- 49
Western Australia	10,185	10,556	- 371	10,653	10,782	- 129
Tasmania	3,489	3,444	+ 45	3,515	3,512	+ 3
Six States	124,353	124,664	- 311	129,347	129,831	- 484
Commonwealth	82,808	(c) 81,531	+ 1,277	85,190	(c) 85,160	+ 30
Grand Total (b) ..	197,013	196,047	+ 966	204,472	204,926	- 454

(a) Excludes Metropolitan Board of Water Supply and Sewerage. (b) To avoid duplication in aggregating particulars for the Commonwealth and States, the grand totals exclude payments by the Commonwealth to the States on account of interest on States' debts, special grants and non-recurring grants. (c) Omitting expenditure from excess receipts of previous years. (d) Includes Supplementary estimates £53 (000).

POST OFFICE ACTIVITY.

Period.	Monthly average Receipts of P.M.C.'s Department.(a)	Broadcast Listeners' Licences in force at end of period.(b)	Telephone Services connected at end of period.	
			Lines.	Instruments.
	£'000.	No.	No.	No.
1928-29	1,071	300,528	384,358	505,554
1929-30	1,133	311,648	395,812	520,169
1930-31	1,073	331,128	376,243	498,055
1931-32	1,033	369,092	363,572	484,626
1932-33	1,053	468,430	363,776	487,662
1933-34	1,096	597,989	372,621	501,402
1934-35	1,164	720,532	396,025	532,377
1935-36	1,239	823,613	417,661	562,868
1936-37	1,318	938,331	440,471	594,855
1936-37—				
November	1,206	876,192	428,183	577,134
December	1,418	885,345	429,916	579,567
January	1,314	891,728	431,419	581,710
February	1,255	896,853	433,010	583,960
March	1,318	903,493	434,783	586,586
April	1,438	913,644	436,615	589,563
May	1,260	925,764	438,502	592,112
June	1,487	938,331	440,471	594,855
1937-38—				
July	1,329	949,833	442,525	597,683
August	1,326	966,083	444,672	600,782
September	1,367	984,193	446,992	603,972
October	1,381	989,186	449,432	607,466
November	1,377	999,059	451,900	610,865
December	1,515	1,006,745	454,154	613,955
January	1,337	1,011,118	455,652	616,170
February	1,334	1,016,634	457,516	618,777

(a) Actual collections.

(b) Includes Papua.

MOTOR VEHICLE REGISTRATIONS.

Period.	Motor Vehicles on Register at end of period.			New Motor Vehicles Registered during period.(a)		
	Motor Cars.	Commercial Vehicles, &c.	Motor Cycles.	Motor Cars.	Commercial Vehicles, &c.	Motor Cycles.
1928-29	474,359	71,851	88,049	63,147	14,049	8,656
1929-30	466,930	104,487	84,897	46,529	12,855	7,753
1930-31	429,206	97,933	76,966	15,479	3,822	2,768
1931-32	419,970	96,254	71,696	10,403	2,218	1,955
1932-33	438,499	105,837	72,896	14,024	3,366	2,639
1933-34	455,199	116,341	73,104	22,522	6,589	3,936
1934-35	457,684	155,721	75,045	36,934	10,334	5,249
1935-36	484,832	180,567	77,467	52,383	18,648	6,673
1936-37	499,289	214,296	77,912	48,587	24,191	7,479
1936-37—						
November	487,613	198,739	78,972	3,488	2,074	620
December	492,220	203,161	79,893	4,252	2,406	727
January	492,292	207,549	79,955	3,663	1,805	643
February	493,797	207,340	80,067	4,061	1,765	626
March	495,801	208,982	80,497	5,195	1,877	780
April	488,881	208,068	76,414	4,424	2,014	687
May	494,070	211,733	77,493	4,893	2,147	588
June	499,289	214,296	77,912	4,694	2,310	509
1937-38—						
July	497,766	217,998	77,260	4,662	2,342	642
August	501,632	220,695	77,998	4,028	2,149	640
September	504,815	223,250	78,557	4,156	2,246	632
October	506,844	225,170	78,986	4,263	2,449	679
November	511,701	228,551	79,555	4,656	2,660	780
December	518,165	231,966	80,247	5,384	2,725	823
January	520,360	233,574	80,504	3,906	2,028	708
February	523,155	235,382	81,201	4,424	2,021	762

(a) Excluding Northern Territory and extra-Metropolitan area of Western Australia; also Federal Capital Territory prior to 1935-36. The figures relating to the earlier years are approximate only, as complete particulars are not available.

OVERSEA TOURISTS AND MIGRANTS.

Monthly Averages.			Tourists.		Permanent Migrants.		
			Australians Departing Overseas.	Visitors arriving from Overseas.	Arrivals.	Departures.	Excess of Arrivals (+) or Departures (-).
1928-29	2,079	2,183	3,148	1,689	+ 1,459
1929-30	1,913	2,010	2,093	2,118	- 25
1930-31	1,034	1,619	1,079	2,188	- 1,109
1931-32	903	1,533	757	1,385	- 628
1932-33	1,516	1,518	874	1,068	- 194
1933-34	1,480	1,536	901	1,029	- 128
1934-35	1,641	2,068	1,020	959	+ 61
1935-36	1,756	1,957	1,095	935	+ 160
1936-37	1,937	2,294	1,148	954	+ 194
1936-37—							
November	1,345	2,440	1,326	833	+ 493
December	2,890	3,123	1,239	950	+ 289
January	2,395	2,732	1,530	1,038	+ 492
February	3,155	2,198	1,070	1,089	- 19
March	3,876	3,238	1,490	1,303	+ 187
April	2,469	2,525	1,129	1,095	+ 34
May	2,008	1,776	1,148	1,160	- 12
June	1,139	2,122	1,123	857	+ 266
1937-38—							
July	1,525	2,041	1,275	939	+ 336
August	1,001	1,843	1,239	606	+ 633
September	1,008	1,929	1,318	797	+ 521
October	1,177	2,155	1,482	719	+ 763
November	1,447	2,465	1,652	775	+ 877
December	3,150	3,289	1,835	838	+ 997
January	2,525	3,636	1,752	977	+ 775
February	2,395	3,111	1,316	908	+ 408

BANKRUPTCIES AND INSOLVENCIES.

Monthly Averages.	Sequestrations. (a)		Compositions.		Deeds of Arrangement.		Total.	
	Number.	Gross Liabilities.	Number.	Gross Liabilities.	Number.	Gross Liabilities.	Number.	Gross Liabilities.
(f)		£'000.		£'000.		£'000.		£'000.
1928-29 ..	90	106	47	73	42	159	179	338
1929-30 ..	119	162	62	102	83	232	264	496
1930-31 ..	154	161	95	150	138	354	387	665
1931-32 ..	100	172	63	200	84	179	247	551
1932-33 ..	80	164	45	138	60	138	185	440
1933-34 ..	82	126	47	121	49	100	178	347
1934-35 ..	67	84	42	125	35	68	144	277
1935-36 ..	70	85	39	136	34	64	143	285
1936-37 ..	73	91	35	130	31	60	139	281
1936-37—								
November ..	65	60	24	47	38	78	127	185
December ..	88	126	19	66	35	73	142	265
January ..	46	57	21	221	21	31	88	309
February ..	71	59	49	155	33	90	153	304
March ..	81	96	76	392	42	56	199	544
April ..	70	128	60	214	28	55	158	397
May ..	66	76	36	71	30	57	132	204
June ..	92	154	35	79	38	47	165	280
1937-38—								
July ..	94	84	19	43	25	45	138	172
August ..	69	100	23	52	34	58	126	210
September ..	76	69	19	46	25	31	120	146
October ..	73	74	24	75	30	49	127	198
November ..	73	121	13	19	31	89	117	229
December ..	73	68	20	53	23	39	116	160
January ..	46	78	9	26	20	31	75	135
February ..	75	41	32	114	24	34	131	189

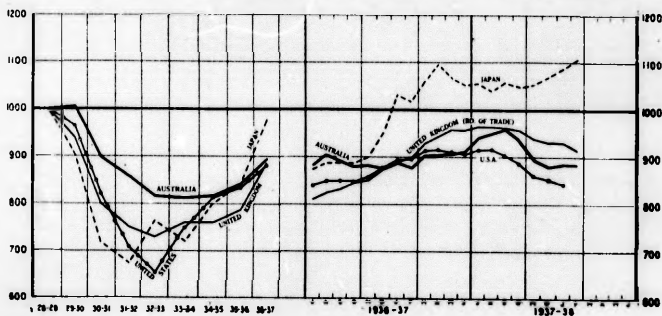
(a) Including Orders for Administration of Deceased Debtors' Estates.

(f) Years ended 31st July.

WHOLESALE PRICE INDEXES : PRINCIPAL COUNTRIES.

(Base : 1928-29 = 1000.)

Period.	United Kingdom.		U.S.A.	Japan.	Germany.	France.	Italy.	Canada.	South Africa.	New Zealand.	Australia.
	Board of Trade.	Economist.	Bureau of Labour Statistics.	Bank of Japan.	Stat. Reichsamt.	Stat. Générale.	Milan.	Dominion Statistician.	Census and Statistics Office.	Government Statistician.	Commonwealth Statistician.
1928-29 ..	1,000	1,000	1,000	1,000	1,000	1,000	1,000	1,000	1,000	1,000	1,000
1929-30 ..	939	912	962	901	950	901	917	995	925	994	1,004
1930-31 ..	799	728	821	718	847	840	755	821	843	942	898
1931-32 ..	749	672	708	674	742	701	660	732	816	888	857
1932-33 ..	729	650	654	764	668	628	600	690	745	873	815
1933-34 ..	759	683	748	721	688	612	565	743	854	890	811
1934-35 ..	760	698	811	798	724	542	581	757	811	905	814
1935-36 ..	786	740	832	841	742	549	719	764	823	939	840
1936-37 ..	883	836	879	975	755	770	801	850	831	972	892
1936-37—											
November	850	803	857	899	750	761	762	815	—	956	881
December	872	834	875	950	754	803	775	842	—	971	874
January ..	889	852	893	1,030	756	832	800	858	848	971	888
February	898	866	897	1,017	758	824	826	875	—	983	877
March ..	928	917	913	1,059	762	851	836	902	—	986	903
April ..	942	901	915	1,095	760	854	852	909	831	992	904
May ..	957	907	911	1,066	761	851	870	898	—	1,006	906
June ..	956	886	906	1,052	762	861	891	893	—	1,014	911
1937-38—											
July ..	963	891	914	1,055	765	900	905	923	854	1,013	941
August ..	962	877	915	1,039	767	933	909	903	—	1,022	949
September	960	865	904	1,053	763	975	922	897	—	1,021	957
October ..	956	839	887	1,045	761	972	940	894	871	1,025	936
November	937	810	860	1,053	758	962	952	877	—	1,048	895
December	929	811	852	1,069	758	976	..	873	—	1,049	879
January ..	930	802	842	1,087	759	984	904	..	885
February ..	914	795	..	1,106	..	976	—	..	883

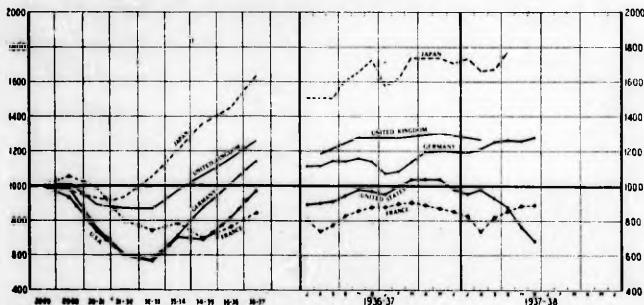


WORLD PRODUCTION AND TRADE.

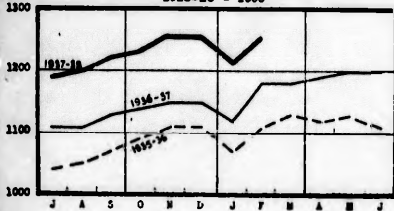
(Base : 1928-29 = 1,000.)

Period.	Indexes of Industrial Production (Manufacturing and Mining).										Quantum of International Trade (d)
	United Kingdom	U.S.A.		Japan.	Germany.	France. (b)	Canada. (c)	U.S.S.R.	World including U.S.S.R. (d)	World excluding U.S.S.R. (d)	
		Federal Reserve Board.									
	Board of Trade.	Adjusted. (c)	Unadjusted.	Official.	Inst. für Konjunkt.	Official.	Official.	Gosplan.	L. of N.	L. of N.	
1928-29 ..	1,000	1,000	1,000	(a)1,000	1,000	1,000	1,000	1,000	(a)1,000	(a)1,000	(a)1,000
1929-30 ..	1,018	936	936	(a) 948	982	1,055	935	1,338	(a) 884	(a) 863	979
1930-31 ..	893	739	739	(a) 916	759	994	775	1,626	(a) 791	(a) 748	881
1931-32 ..	872	599	599	936	601	799	647	2,030	(a) 690	(a) 630	804
1932-33 ..	867	568	568	1,057	564	745	549	2,185	705	643	728
1933-34 ..	977	708	708	1,205	714	787	702	2,481	831	761	758
1934-35 ..	1,065	693	693	1,360	878	698	771	2,985	883	791	774
1935-36 ..	1,158	816	816	1,452	1,012	(e) 765	857	3,886	1,021	891	834
1936-37 ..	1,262	970	970	1,633	1,141	(e) 846	965	1,020	926
1936-37—						(e)					
November	1,281	974	979	1,652	1,157	856	962	4,966	1,192	1,025	921
December	—	1,034	970	1,724	1,140	878	958	4,750	1,211	1,055	—
January ..	—	974	953	1,575	1,073	877	944	1,009	—
February	1,276	991	996	1,615	1,084	894	931	1,030	928
March ..	—	1,009	1,038	1,736	1,138	903	968	1,050	—
April ..	—	1,009	1,038	1,727	1,189	887	1,018	1,067	—
May ..	1,312	1,009	1,038	1,739	1,199	867	997	1,068	1,002
June ..	—	974	979	1,706	1,195	851	1,032	1,044	—
1937-38—											
July ..	—	974	953	1,731	1,193	825	1,034	1,040	—
August ..	1,271	1,000	979	1,661	1,215	736	1,005	1,029	971
September	—	949	928	1,667	1,253	816	1,008	1,014	—
October ..	—	872	868	1,769	1,261	854	1,048	—
November	1,318	761	(c) 769	..	1,260	883	1,055
December	—	718	684	..	1,278	883	990

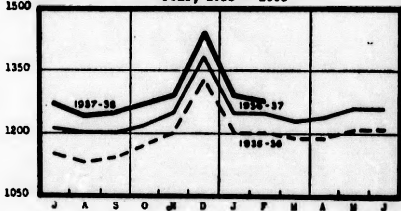
(a) Year ending 31st December following. (b) Monthly figures partly adjusted for seasonal variations. (c) Monthly figures adjusted for seasonal variations. (d) These figures are revised from time to time. (e) Revised.



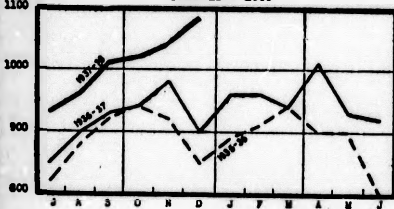
Index No. **FACTORY EMPLOYMENT INDEX: AUSTRALIA**
1928-29 = 1000



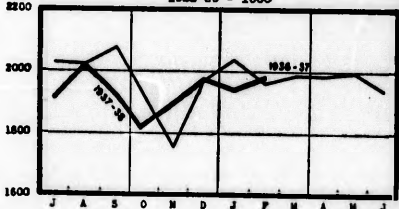
Index No. **RETAIL STORE EMPLOYMENT INDEX**
JULY, 1933 = 1000



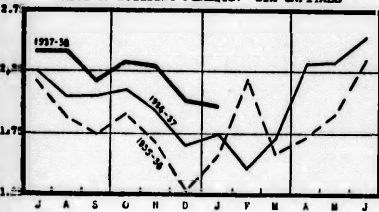
Index No. **FREIGHT TONNAGE INDEX: MAINLAND RAILWAYS**
1928-29 = 1000



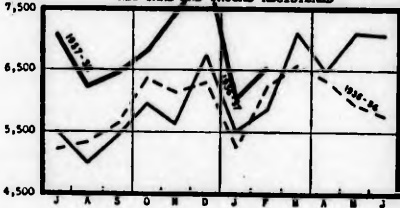
Index No. **PIG IRON PRODUCTION INDEX: AUSTRALIA**
1928-29 = 1000



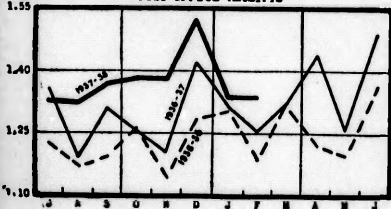
Am. **VALUE OF BUILDING PERMITS: SIX CAPITALS**



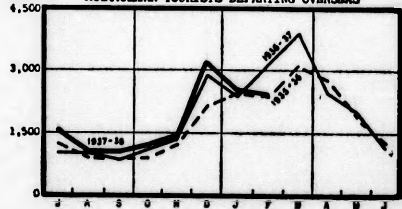
Number **NEW CARS AND TRUCKS REGISTERED**



Am. **POST OFFICE RECEIPTS**



Number **AUSTRALIAN TOURISTS DEPARTING OVERSEAS**



LATEST BUREAU PUBLICATIONS.

- March 1st. Oversea Migration : Year 1937 (P.N. 701).
.. 2nd. Savings Bank Deposits : January, 1938 (P.N. 702).
.. 3rd. Oversea Trade : Details for January, 1938 (P.N. 703).
.. 4th. Census of Aboriginals—30th June, 1937 (P.N. 704).
.. 7th. Oversea Trade : Preliminary for February, 1938
(P.N. 705).
.. 9th. Monthly Review of Business Statistics : February, 1938.
.. 11th. Wheat Situation in Australia : February, 1938.
.. 11th. Quarterly Summary of Australian Statistics : No. 150,
December, 1937 (and P.N. 706).
.. 15th. Gold Mining Industry : January, 1938 (P.N. 707).
.. 16th. Exports of Wool : First eight months, 1936-37 and
1937-38 (P.N. 708).
.. 22nd. Census of 1933 : Part 26—Unemployment.
.. 22nd. Census of 1933 : Part 27—Part-Time Employment.
.. 22nd. Census of 1933 : Part 28—Income.
.. 23rd. Dairy Industry in Australia : January, 1938.
.. 24th. Oversea Trade : Miscellaneous Imports, 1936-37 (P.N.
709).
.. 25th. Retail Prices of Food and Groceries : February, 1938
(P.N. 710).
.. 26th. Oversea Trade of the United Kingdom, 1936 and 1937
(P.N. 711).
.. 28th. Melbourne Wholesale Prices Index Numbers : February,
1938 (P.N. 712).
.. 29th. Savings Bank Deposits : 28th February, 1938 (P.N. 713).