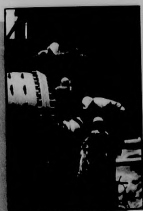




LABOUR STATISTICS

i n b r i e f



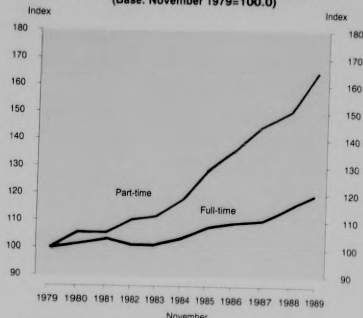
A U S T R A L I A
1 9 9 0

KEY FACTS

	November	
	1979	1989
POPULATION		
Total civilian population	million	14.5 16.8
Aged 15 and over	"	10.8 13.1
LABOUR FORCE		
Participation rates		
—males	%	77.7 75.3
—females	"	44.2 51.7
—persons	"	60.7 63.3
EMPLOYMENT		
Employed persons		
—males	'000	3,946.7 4,637.7
—females	"	2,242.1 3,233.0
—total	"	6,188.8 7,870.7
—full-time	%	83.8 79.0
—part-time	"	16.2 21.0
Employment/population ratio	"	57.3 59.9
Underemployed	'000	188.2 339.9
UNEMPLOYMENT		
Unemployed persons	'000	363.6 446.7
Unemployment rate	%	4.5 4.9
—males	"	7.4 6.0
—females	"	5.5 5.4
—aged 15-19	"	15.8 12.4
Average duration, persons	weeks	30.8 18.5
JOB VACANCIES		
Hours of work	'000	34.3 62.7
HOURS OF WORK		
Average weekly hours worked by employed persons	hours	36.3 37.6
—full-time	"	40.4 43.3
—part-time	"	15.4 15.9
Average overtime hours per employee	"	1.5 1.6
INDUSTRIAL RELATIONS		
Industrial disputes, working days lost per thousand employees	no.	787.0 190.0
Industrial disputes, days lost during year	'000	3,964.4 1,202.4
		June
Trade Union membership	"	2,873.6 3,410.3
		12 months ended December
		months years
CHANGE IN WAGES AND PRICES		
Average weekly earnings, all males	Nov.	6.9 132.9
Award rates of pay index, wage and salary earners, adult males	Dec.	4.7 99.4
Consumer price index, all groups	Dec. Qtr.	7.8 122.0

© Commonwealth of Australia 1990

EMPLOYMENT

FULL-TIME AND PART-TIME EMPLOYMENT
(Base: November 1979=100.0)

Source: The Labour Force, Australia (6203.0)

WAGE AND SALARY EARNERS: PRIVATE AND PUBLIC SECTORS, November

	1979	1989
	%	%
Private	69.8	72.5
Public—		
Commonwealth	7.9	6.3
State	19.5	18.6
Local	2.6	2.5
Total	30.2	27.5
Total	100.0	100.0

Sources: Civilian Employees, Australia (6213.0); Employed Wage and Salary Earners, Australia (6248.0).

WAGE AND SALARY EARNERS: INDUSTRY
November 1989

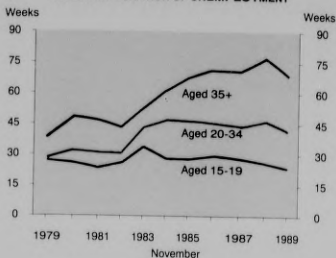
	'000	%
Mining	82.7	1.3
Manufacturing	1,093.3	17.4
Electricity, gas and water	117.6	1.9
Construction	327.9	5.2
Wholesale and retail trade	1,303.7	20.7
Transport and storage	317.3	5.0
Communication	129.5	2.1
Finance, property and business services	819.3	13.0
Public administration and defence	305.5	4.8
Community services	1,311.2	20.8
Recreation, personal and other services	484.6	7.7
Total(a)	6,300.0	100.0

(a) Includes employees of government agencies classified to agriculture, forestry, fishing and hunting.

Source: Employed Wage and Salary Earners, Australia, December 1989 (6248.0).

UNEMPLOYMENT

AVERAGE DURATION OF UNEMPLOYMENT



Source: The Labour Force, Australia (6203.0)

LABOUR COSTS

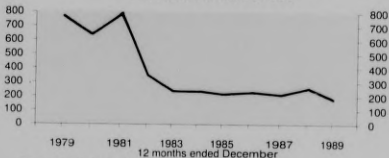
LABOUR COSTS PER EMPLOYEE, 1987-88 Dollars

Type of Labour Cost	Private	Public	Total
Earnings	20,133	24,552	21,417
Gross wages and salaries	19,667	23,905	20,899
Severance, termination and redundancy payments	466	646	518
Other labour costs	2,177	3,507	2,563
Payroll tax	769	680	743
Superannuation	707	2,163	1,130
Workers' compensation	530	589	547
Fringe benefits tax	171	75	143
Total labour costs	22,310	28,058	23,980

Source: Major Labour Costs, Australia (6348.0)

INDUSTRIAL RELATIONS

INDUSTRIAL DISPUTES: WORKING DAYS LOST PER THOUSAND EMPLOYEES



Source: Industrial Disputes, Australia (6321.0)

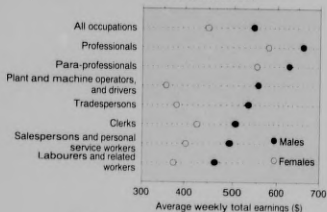
EARNINGS

AVERAGE WEEKLY EARNINGS (\$)

	November		
	1987	1988	1989
All males	470.00	505.20	540.00
Full-time adults	516.30	558.90	595.90
All females	306.50	328.70	349.30
Full-time adults	401.90	439.60	467.60
All persons	401.80	430.10	457.20
Full-time adults	479.70	520.20	553.80

Source: Average Weekly Earnings, States and Australia (6302.0)

AVERAGE WEEKLY TOTAL EARNINGS OF FULL-TIME ADULT NON-MANAGERIAL EMPLOYEES, MAJOR OCCUPATION GROUPS, MAY 1989

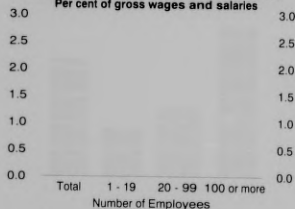


Source: Distribution and Composition of Employee Earnings and Hours, Australia, May 1989 (6305.0)

TRAINING EXPENDITURE

AVERAGE TRAINING EXPENDITURE - ALL EMPLOYERS EMPLOYER SIZE, JULY TO SEPTEMBER 1989

Per cent of gross wages and salaries



Source: Employer Training Expenditure, Australia (6353.0)

INTERNATIONAL COMPARISONS

SELECTED CHARACTERISTICS, 1989

	Population, June (million)	Civilian Employment, average for year (million)	Unemployment rate, average for year (per cent)
Australia	16.8	7.7	6.1
U.S.A.	248.8	117.3	5.2
Japan	122.6	61.3	2.3
Germany (Fed. Rep.)	(a)61.4	27.2	6.8
United Kingdom	(a)57.1	26.0	6.2
Italy	57.4	20.8	11.8
Canada	26.3	12.5	7.5
Sweden	8.5	4.5	1.4

(a) June 1988.

Source: UN Monthly Bulletin of Statistics, April 1990; OECD Labour Force Statistics 1/1990.

SERVICES AVAILABLE FROM ABS

Publications

We produce over 1,500 monthly, quarterly and annual publications each year covering population, social and labour statistics, economic indicators and industry data. A complete list of our publications is contained in the Catalogue of Publications and Products which is available free on request from any of our offices. Bookshops in each office maintain up to date stocks of all our publications. You can purchase by mail, phone or fax, and you can also become a subscriber to our regular releases.

Electronic services

A wide selection of our information is available on electronic media, including magnetic tape, floppy disk, CD-ROM, electronic mail and DISCOVERY. Information Services in each of our offices will help you select the right products and services.

Information consultancy

Personal assistance is provided to meet more complex information requests such as tailored data compilations or in-depth data investigations, making it easy for you to find the information you need.

Our services extend beyond our publications

Contact the Australian Bureau of Statistics in your Capital City, and find out how you can benefit from the latest and most accurate information available.

SYDNEY GPO Box 796 Sydney 2001 (02) 268 4111	PERTH GPO Box K881 Perth 6001 (09) 323 5323	DARWIN GPO Box 3796 Darwin 5794 (089) 81 5222
MELBOURNE GPO Box 2796Y Melbourne 3001 (03) 615 7000	ADELAIDE GPO Box 2272 Adelaide 5001 (08) 237 7555	CANBERRA PO Box 10 Belconnen 2616 (06) 252 5402
BRISBANE GPO Box 9817 Brisbane 4001 (07) 222 6022	HOBART GPO Box 66A Hobart 7001 (002) 20 5011	

(ABS Catalogue No. 6104.0)