

South Pacific statistics at a glance

Compiled from the South Pacific Economic and Social Database
by Ruel Abello

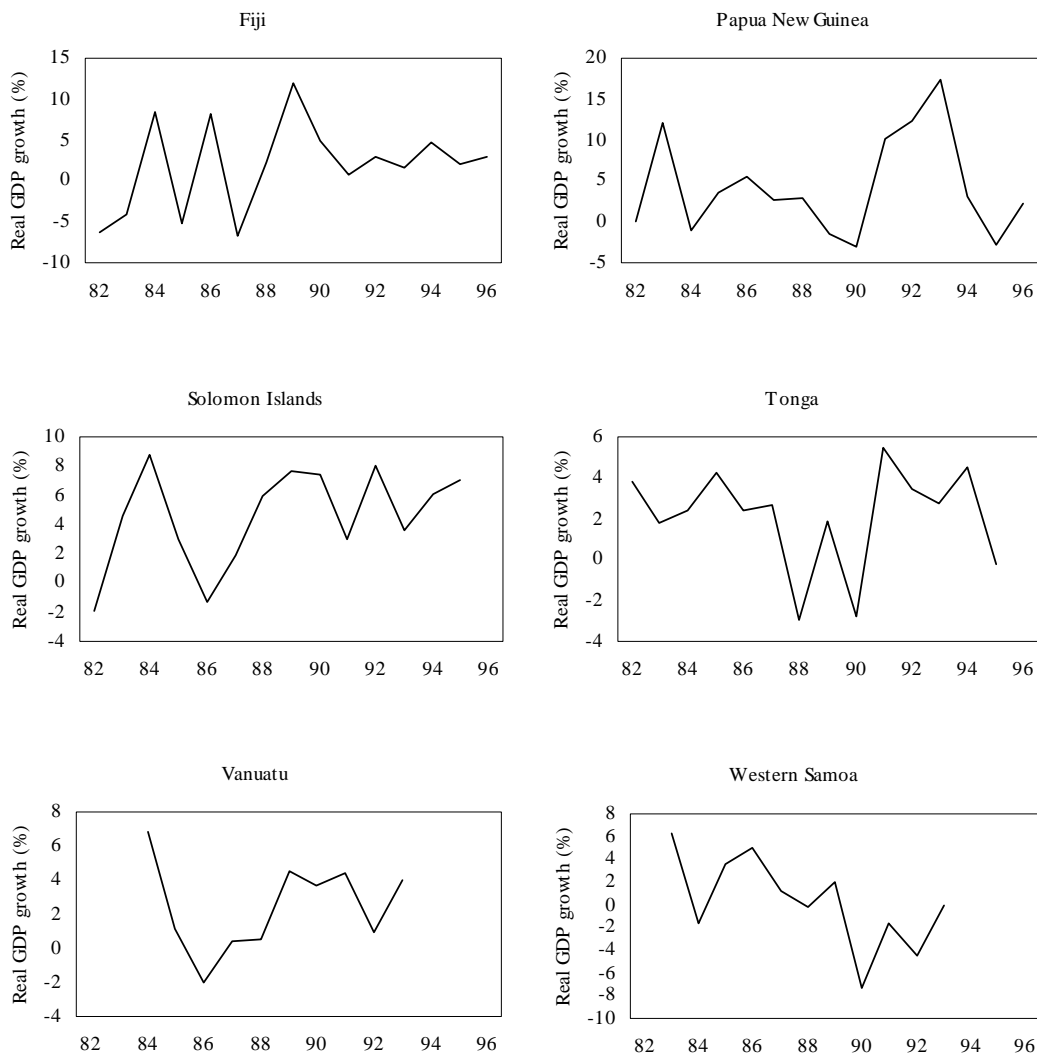
National Centre for Development Studies

Figure

1	Real GDP growth rates, 1982–96	151
2	Consumer price quarterly indexes, 1993–96	152
3	Merchandise trade, 1986–96	153
4	Current account balance, 1986–96	154
5	GDP per capita, 1986–96	155
6	Quarterly interest rates, 1993–96	156
7	Exchange rates, 1986–96	157



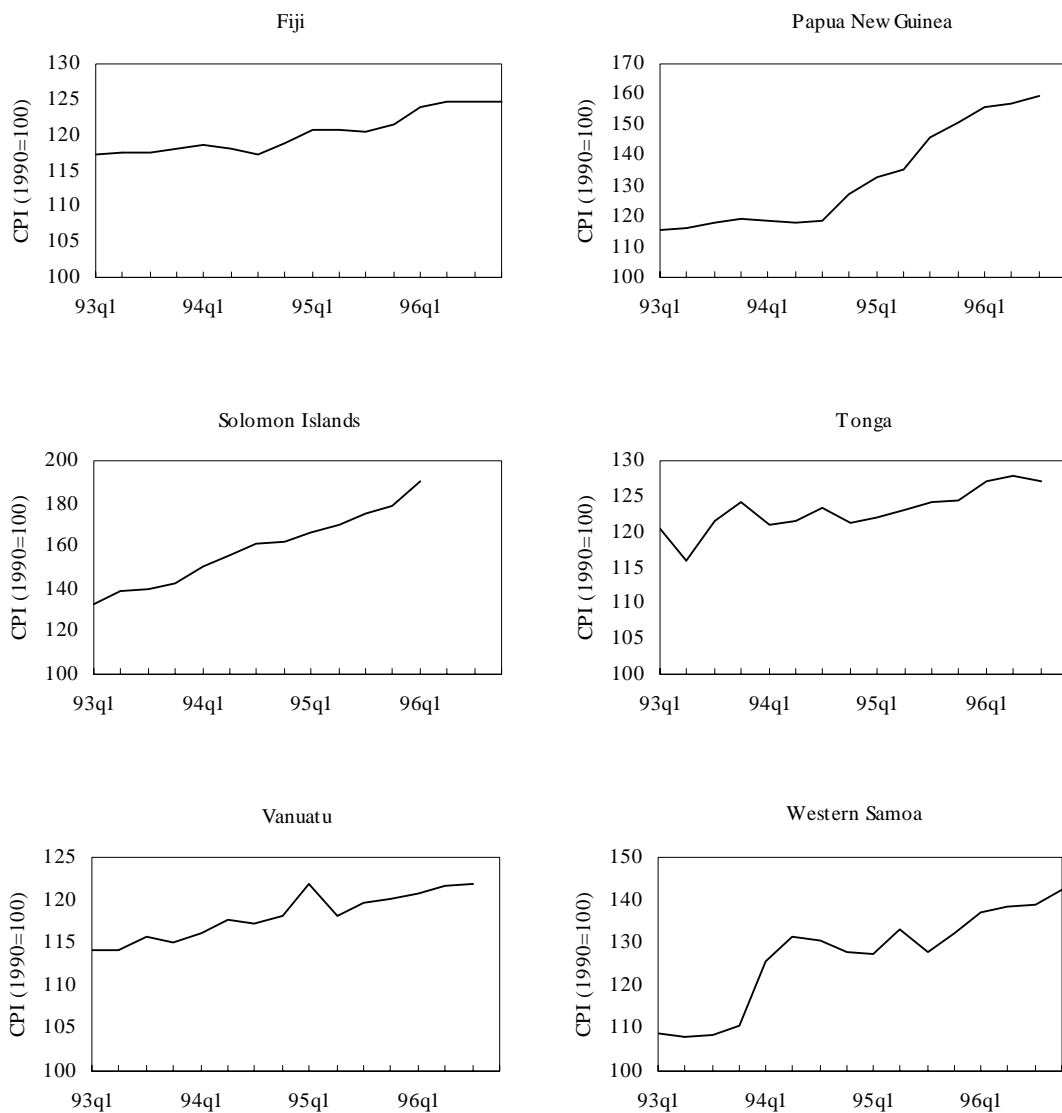
Figure 1 Real GDP growth rates, 1982-96 (per cent)



Source: South Pacific Economic and Social Database, National Centre for Development Studies, The Australian National University, Canberra.



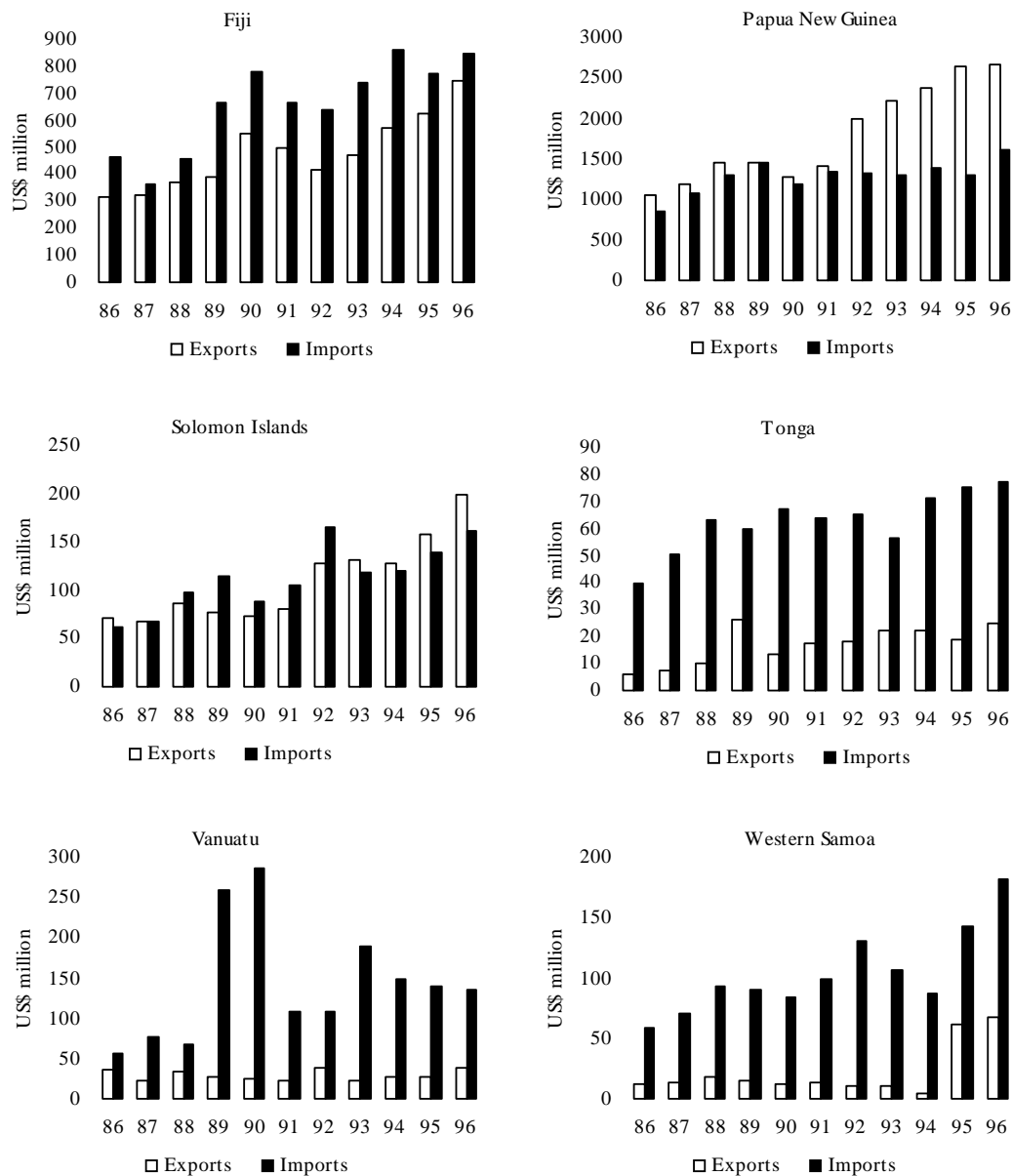
Figure 2 Consumer price quarterly indexes, 1993–96



Source: South Pacific Economic and Social Database, National Centre for Development Studies, The Australian National University, Canberra.



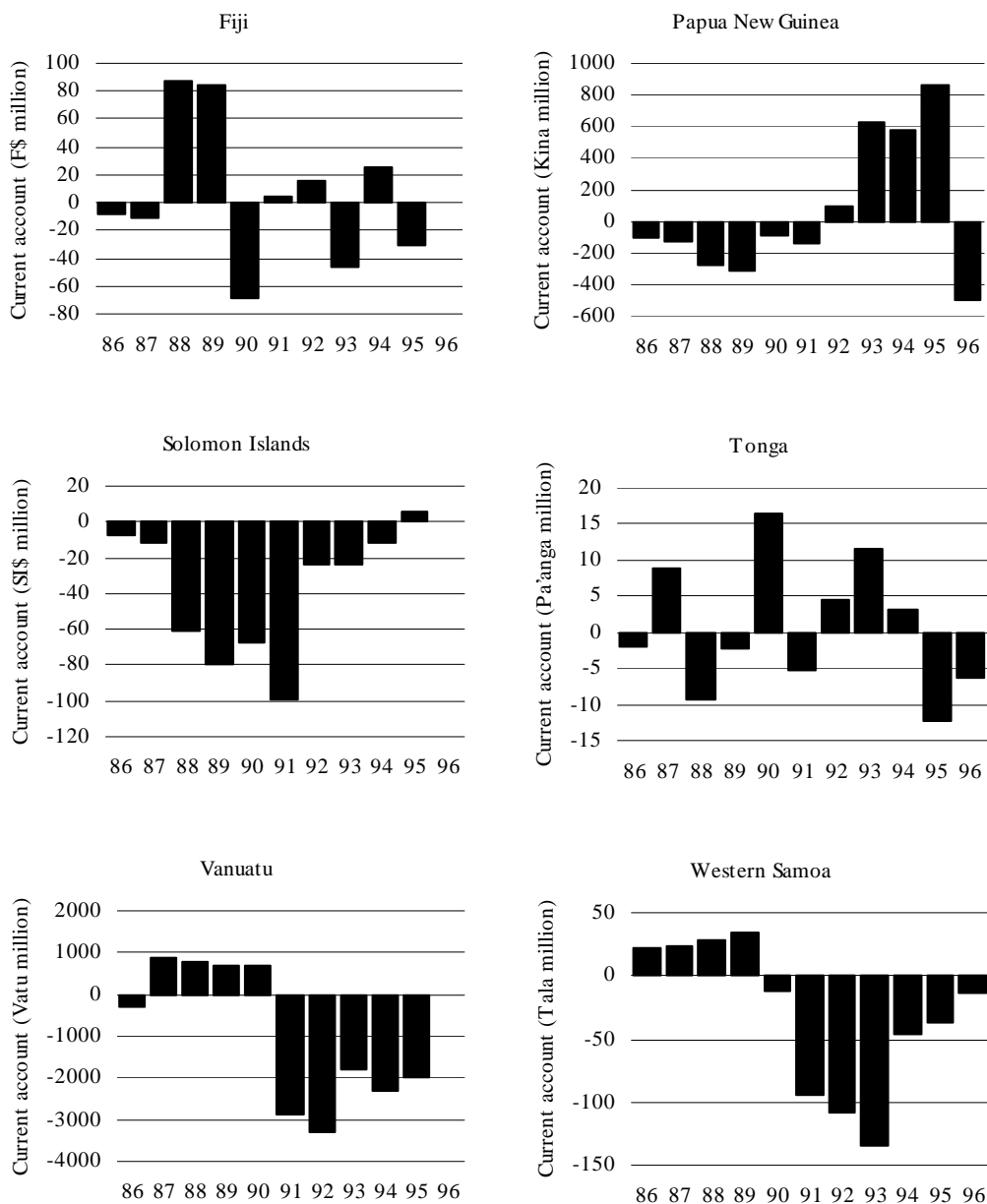
Figure 3 Merchandise trade, 1986-96



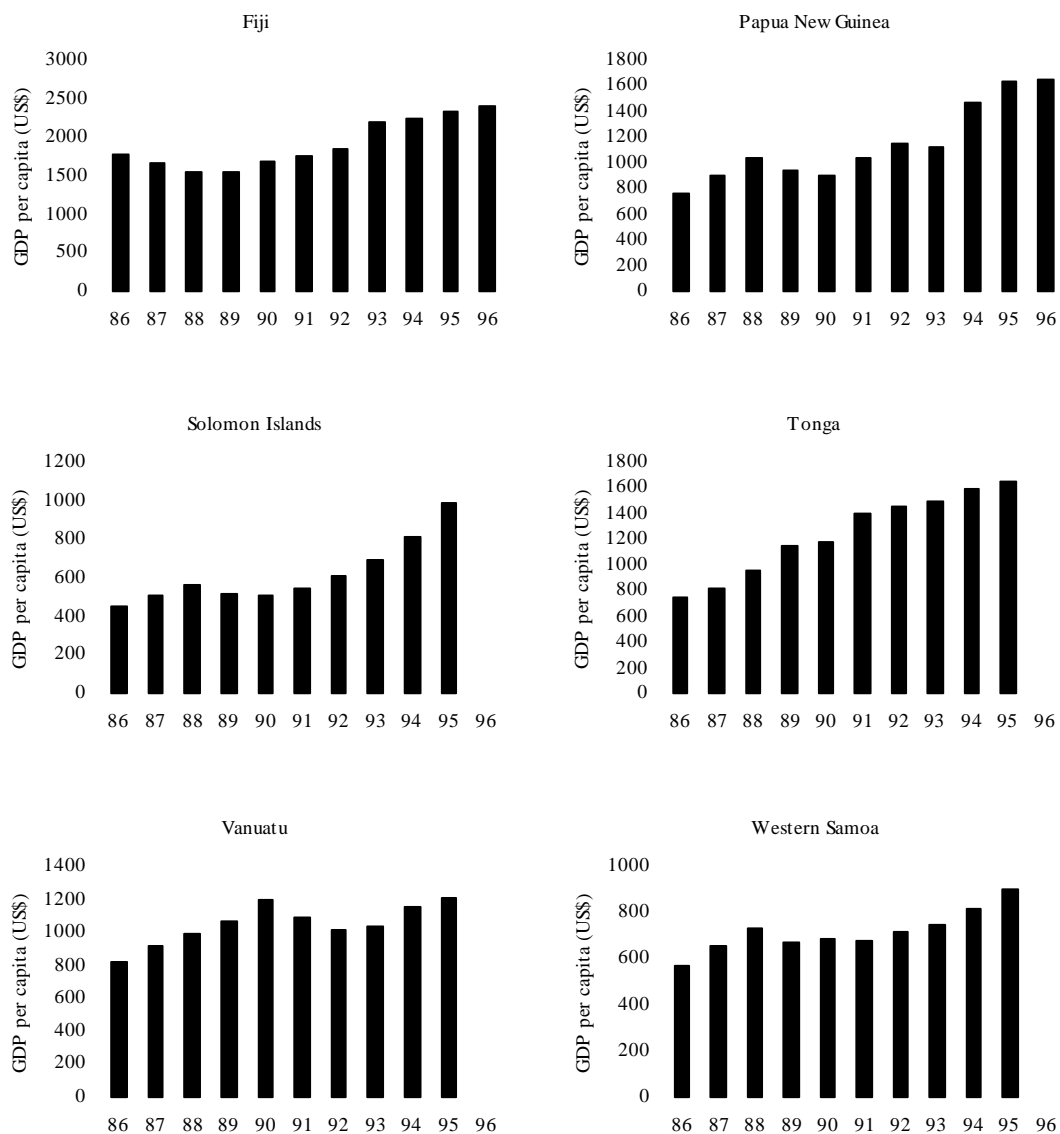
Source: South Pacific Economic and Social Database, National Centre for Development Studies, The Australian National University, Canberra.



Figure 4 Current account balance as a percentage of GDP, 1986–96



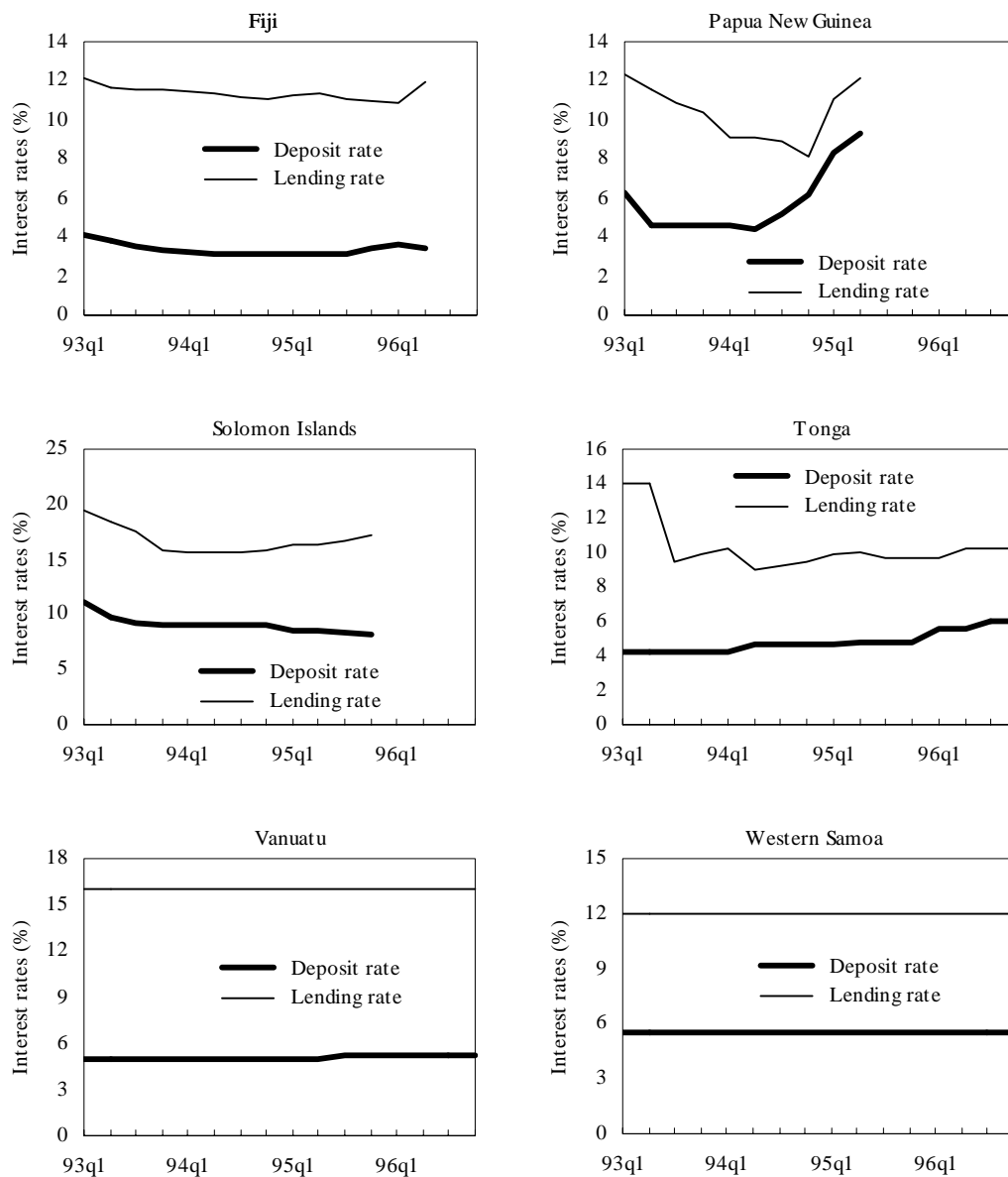
Source: South Pacific Economic and Social Database, National Centre for Development Studies, The Australian National University, Canberra.


Figure 5 GDP per capita, 1986–96 (US\$)


Source: South Pacific Economic and Social Database, National Centre for Development Studies, The Australian National University, Canberra.



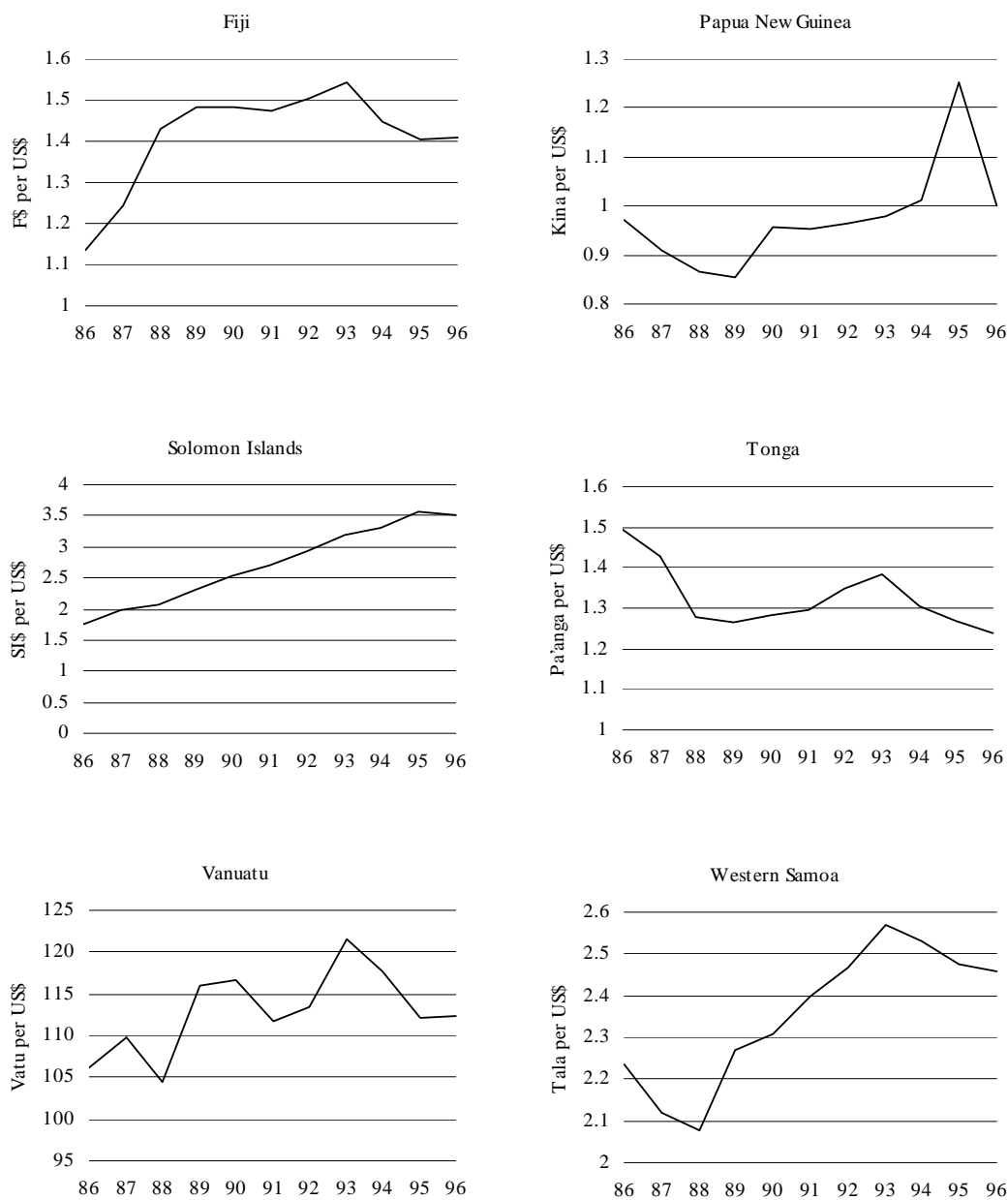
Figure 6 Quarterly interest rates, 1993–96 (per cent)



Source: South Pacific Economic and Social Database, National Centre for Development Studies, The Australian National University, Canberra.



Figure 7 Exchange rates, 1986–96



Source: South Pacific Economic and Social Database, National Centre for Development Studies, The Australian National University, Canberra.