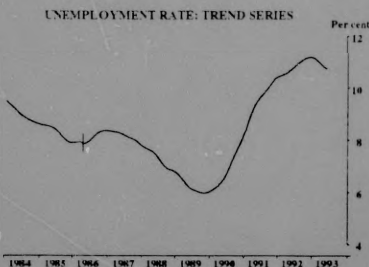


THE LABOUR FORCE, AUSTRALIA, MAY 1993, PRELIMINARY

Care should be taken in the interpretation of month-to-month movements in estimates (see paragraph 15 of the Explanatory Notes).

MAIN FEATURES

The May 1993 seasonally adjusted estimate of **employed persons** was 7,696,900, an increase of 44,900 since April 1993. Full-time employment increased by 10,600 to 5,915,100. Male full-time employment increased by 17,100 to 4,010,400, while for females, full-time employment fell slightly to 1,904,700. Part-time employment increased by 34,300 to 1,781,800, mainly as a result of an increase of 30,300 in female part-time employment. Provisional trend estimates of employment have increased marginally each month since January 1993. The trend in full-time employment has been increasing since October 1992 although the rate of increase has slowed in the last four months.



Indicates break in series — see paragraph 6 of the Explanatory Notes.

Trend estimates of males and females employed full time have been increasing since December 1992 and September 1992 respectively. Trend estimates of male part-time employment have been falling since September 1992, while for females, trend estimates of part-time employment are flat.

The seasonally adjusted estimate of **unemployed persons** for May 1993 was 924,800, an increase of 10,700 since April 1993. Male unemployment stood at 583,800 following small falls in both full-time and part-time unemployment. For females, unemployment increased by 17,500 to 341,000, mainly due to a rise of 14,800 in the number of females looking for part-time work. Provisional trend estimates of unemployment have been decreasing since December 1992. Trend estimates of males looking for full-time work have been falling since January 1993 while the trend for males seeking part-time work has increased in each of the last three months after falling between November 1992 and February 1993. For females, trend estimates of full-time and part-time unemployment have been falling since January 1993 and November 1992 respectively.

The May 1993 seasonally adjusted estimate of the **unemployment rate** was 10.7%, unchanged from April 1993. For males, the unemployment rate fell by 0.2 percentage points to 11.6%, while for females the unemployment rate increased by 0.4 percentage points to 9.5%. The provisional trend estimate of the unemployment rate has been falling since January 1993 and now stands at 10.7% compared with the peak of 11.2% in November and December 1992. For males, the trend estimate of the unemployment rate remained relatively flat while for females the trend estimate of the unemployment rate has fallen in each of the last six months. For 15 to 19 year olds, the seasonally adjusted full-time unemployment rate was 31.0%, compared with 32.3% in April 1993. This is the proportion of 15 to 19 year olds in the full-time labour force unable to find employment.

The May 1993 seasonally adjusted estimates of the unemployment rate for the States were (with April 1993 estimates shown in brackets): New South Wales 10.5% (10.8%), Victoria 12.3% (11.1%), Queensland 10.3% (10.0%), South Australia 10.4% (11.5%), Western Australia 9.5% (9.9%) and Tasmania 12.4% (12.5%). Graphs of the trend estimates of the unemployment rate for the States are shown on page 3.

The seasonally adjusted estimate of the **labour force participation rate** for May 1993 increased by 0.3 percentage points to 62.2%. The participation rate for males increased slightly to 73.6% and for females the participation rate increased by 0.5 percentage points to 51.2%. The provisional trend estimate of the participation rate now stands at 62.2% following monthly falls since August 1992.

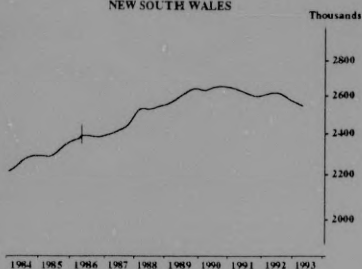
INQUIRIES

- for further information about statistics in this publication and the availability of related unpublished statistics, contact Heather Crawford on Canberra (06) 252 6525 or any ABS State office.
- for information about other ABS statistics and services please refer to the back page of this publication.

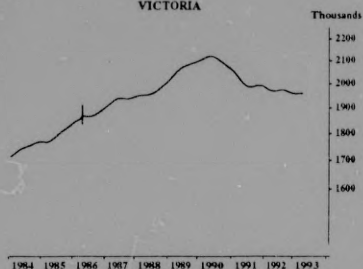
EMPLOYED PERSONS: TREND SERIES

The graphs on this page have been drawn to a semi-logarithmic scale to enable comparisons to be made of rates of change — See paragraph 20 of the Explanatory Notes.

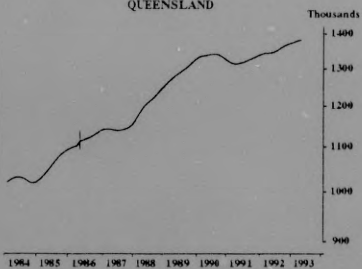
NEW SOUTH WALES



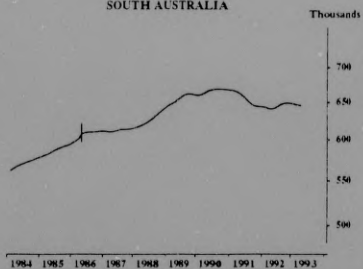
VICTORIA



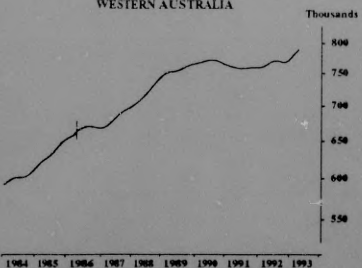
QUEENSLAND



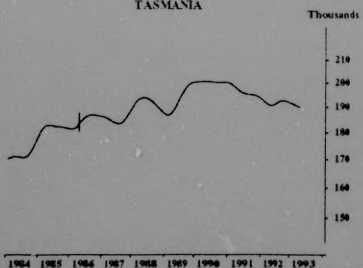
SOUTH AUSTRALIA



WESTERN AUSTRALIA

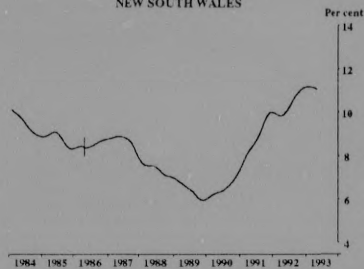


TASMANIA

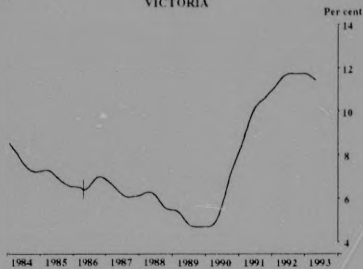


UNEMPLOYMENT RATE: TREND SERIES

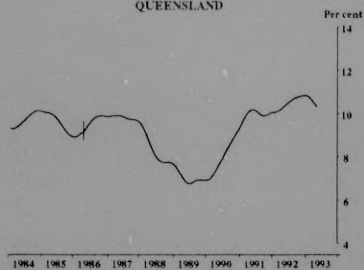
NEW SOUTH WALES



VICTORIA



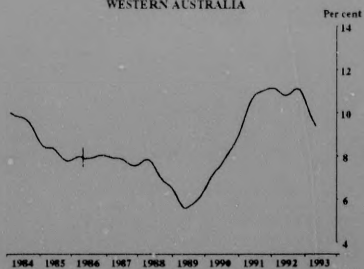
QUEENSLAND



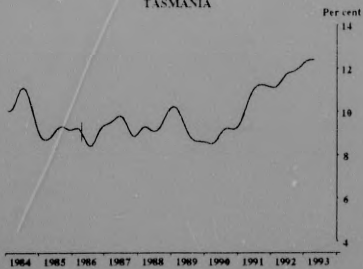
SOUTH AUSTRALIA



WESTERN AUSTRALIA



TASMANIA



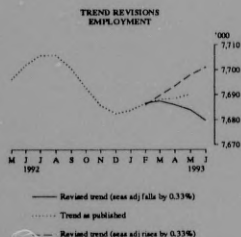
Revisions to trend estimates — what if . . . ?

As new seasonally adjusted estimates are published, provisional trend estimates for the most recent six months are revised (see paragraphs 17 to 19 of the Explanatory Notes).

The tables and graphs below show the extent of revisions to current trend estimates under various assumptions about the values of the seasonally adjusted estimates for next month (June) of employment and the unemployment rate (Note: these are illustrative cases, and are not forecasts of future estimates).

The examples considered in the tables below are:

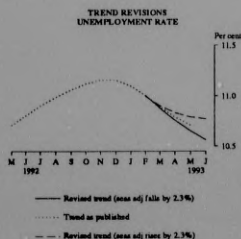
- (1) The June seasonally adjusted estimate is the same as that for May;
- (2) The June seasonally adjusted estimate is higher than the May estimates by (a) 0.33% for employment and (b) 2.3% for the unemployment rate (ie by the average absolute percentage change);
- (3) The June seasonally adjusted estimate is lower than the May estimate by (a) 0.33% for employment and (b) 2.3% for the unemployment rate;
- (4) The June seasonally adjusted estimate is such that the resultant May and June trend estimates are the same.



Employment ('000)

Trend estimates published this month	Revised trend estimates if June 1993 seasonally adjusted est:			results in the same trend estimate for May and June (7700.6)
	is the same as May 1993 (7696.9)	rises by 0.33% (7722.5)	falls by 0.33% (7671.2)	
1993				
March	7688.3	7688.7	7689.9	7688.9
April	7688.5	7689.8	7693.6	7690.4
May	7690.3	7691.0	7698.1	7692.0
June (new)	..	7690.5	7701.3	7692.0

For example, if seasonally adjusted employment were to increase in June 1993 by 0.33 per cent to 7,722,500 the trend estimates for the previous three months would be revised to: May, 7,698,100; April, 7,693,600; March, 7,689,900.



Unemployment rate (per cent)

Trend estimates published this month	Revised trend estimates if June 1993 seasonally adjusted est:			results in the same trend estimate for May and June (11.11)
	is the same as May 1993 (10.73)	rises by 2.3% (10.97)	falls by 2.3% (10.48)	
1993				
March	10.9	10.9	10.9	10.9
April	10.8	10.8	10.8	10.9
May	10.7	10.7	10.8	10.8
June (new)	..	10.7	10.8	10.8

For example, if the June 1993 seasonally adjusted estimate of the unemployment rate were to increase by 2.3 per cent to 10.97 per cent, the May 1993 trend estimate of the unemployment rate would remain at 10.8 per cent.

TABLE I. LABOUR FORCE STATUS OF CIVILIAN POPULATION AGED 15 AND OVER

Month	Unemployed											Civilian population aged 15 and over	Unemployment rate per cent	Participation rate			
	Employed		Looking for full-time work		Aged 15-19 looking for first job		Looking for part-time work		Labour force	Not in labour force	Civilian population aged 15 and over						
	Full-time workers	Total	Total	Total	Total	Total	Total	Total									
	'000																
MALES																	
1992 —																	
March	4,003.5	4,459.2	36.6	520.7	49.1	569.8	5,029.0	1,703.9	6,732.8	11.3	74.7	6,732.8	11.3	74.7			
April	4,002.1	4,459.0	31.9	506.7	42.3	549.0	5,007.9	1,732.1	6,740.1	11.0	74.3	6,740.1	11.0	74.3			
May	3,982.8	4,449.7	35.7	527.3	41.7	569.0	5,018.7	1,728.6	6,747.3	11.3	74.4	6,747.3	11.3	74.4			
June	3,982.4	4,455.0	32.6	517.8	42.7	560.5	5,015.5	1,739.1	6,754.5	11.2	74.3	6,754.5	11.2	74.3			
July	4,018.0	4,477.6	32.1	534.1	42.1	576.3	5,053.8	1,708.3	6,762.1	11.4	74.7	6,762.1	11.4	74.7			
August	3,966.5	4,433.4	33.6	521.0	43.4	564.4	4,997.8	1,771.9	6,769.7	11.3	73.8	6,769.7	11.3	73.8			
September	3,999.8	4,469.7	33.2	520.2	46.5	566.7	5,036.4	1,741.0	6,777.3	11.3	74.3	6,777.3	11.3	74.3			
October	4,005.2	4,468.7	30.4	503.0	54.0	557.1	5,025.8	1,758.8	6,784.6	11.1	74.1	6,784.6	11.1	74.1			
November	3,959.9	4,405.9	33.8	519.7	44.6	564.2	4,970.2	1,821.6	6,791.8	11.4	73.2	6,791.8	11.4	73.2			
December	4,029.9	4,472.3	43.5	548.5	60.2	608.7	5,081.0	1,718.0	6,799.0	12.0	74.7	6,799.0	12.0	74.7			
1993 —																	
January	3,980.6	4,422.4	51.8	594.8	45.7	640.5	5,062.8	1,743.9	6,806.7	12.7	74.4	6,806.7	12.7	74.4			
February	3,992.8	4,401.5	47.8	585.6	54.3	639.9	5,041.4	1,773.1	6,814.5	12.7	74.0	6,814.5	12.7	74.0			
March	4,003.4	4,458.5	34.2	534.6	59.1	593.7	5,052.2	1,770.0	6,822.2	11.8	74.1	6,822.2	11.8	74.1			
April	3,982.5	4,426.9	33.2	527.9	56.2	584.1	5,011.0	1,817.0	6,828.0	11.7	73.4	6,828.0	11.7	73.4			
May	4,005.3	4,451.1	29.7	536.1	52.4	588.5	5,039.5	1,794.2	6,833.8	11.7	73.7	6,833.8	11.7	73.7			
Standard error of —																	
May 1993 estimates	19.5	20.2	2.7	9.3	3.5	9.6	21.1	14.7	..	0.2	0.3	..	0.2	0.3			
Apr 93 to May 93 movements	14.8	15.4	2.5	7.0	3.0	7.2	16.2	11.0	..	0.1	0.2	..	0.1	0.2			
FEMALES																	
1992 —																	
March	1,889.7	3,245.3	30.4	265.2	114.2	379.3	3,624.6	3,285.1	6,909.7	10.5	52.5	6,909.7	10.5	52.5			
April	1,864.4	3,237.5	30.2	267.2	94.7	361.9	3,599.4	3,318.7	6,918.1	10.1	52.0	6,918.1	10.1	52.0			
May	1,872.0	3,237.7	30.6	262.2	89.3	351.5	3,589.2	3,337.2	6,926.4	9.8	51.8	6,926.4	9.8	51.8			
June	1,854.6	3,246.3	30.9	259.0	94.9	353.7	3,601.1	3,334.7	6,935.8	9.8	51.9	6,935.8	9.8	51.9			
July	1,887.4	3,264.0	31.0	259.2	90.8	350.1	3,614.1	3,329.6	6,943.6	9.7	52.0	6,943.6	9.7	52.0			
August	1,839.5	3,248.8	29.3	244.0	97.9	342.0	3,587.8	3,364.6	6,952.4	9.5	51.6	6,952.4	9.5	51.6			
September	1,881.8	3,291.0	25.8	245.3	114.1	359.4	3,650.4	3,310.9	6,961.3	9.8	52.4	6,961.3	9.8	52.4			
October	1,870.5	3,256.2	25.3	244.2	101.2	345.4	3,601.6	3,367.5	6,969.1	9.6	53.2	6,969.1	9.6	53.2			
November	1,878.8	3,250.7	28.9	239.5	91.6	331.1	3,581.8	3,395.0	6,976.8	9.2	51.3	6,976.8	9.2	51.3			
December	1,935.0	3,277.8	45.3	279.0	101.0	380.0	3,657.8	3,326.8	6,984.6	13.4	52.4	6,984.6	13.4	52.4			
1993 —																	
January	1,930.6	3,175.4	44.3	287.9	89.3	377.2	3,552.5	3,440.0	6,992.5	10.6	50.8	6,992.5	10.6	50.8			
February	1,897.5	3,204.6	40.1	300.4	112.4	412.9	3,617.5	3,383.0	7,000.5	11.4	51.7	7,000.5	11.4	51.7			
March	1,918.8	3,271.5	32.7	280.3	115.3	395.6	3,667.1	3,341.3	7,008.4	10.8	52.3	7,008.4	10.8	52.3			
April	1,895.5	3,233.3	25.1	252.1	94.5	346.6	3,581.9	3,432.0	7,014.8	9.7	51.1	7,014.8	9.7	51.1			
May	1,897.2	3,264.6	26.8	249.6	94.7	344.4	3,609.0	3,412.2	7,021.2	9.5	51.4	7,021.2	9.5	51.4			
Standard error of —																	
May 1993 estimates	15.0	18.2	2.5	6.8	4.5	7.8	18.8	18.4	..	0.2	0.3	..	0.2	0.3			
Apr 93 to May 93 movements	11.2	13.7	2.3	5.3	3.6	-5.9	14.3	14.0	..	0.2	0.2	..	0.2	0.2			
PERSONS																	
1992 —																	
March	5,893.2	7,704.4	67.0	785.8	163.3	949.1	8,653.6	4,988.9	13,642.5	11.0	63.4	13,642.5	11.0	63.4			
April	5,866.5	7,696.4	62.2	773.8	137.0	910.9	8,607.3	5,050.8	13,658.1	10.6	63.0	13,658.1	10.6	63.0			
May	5,854.8	7,687.5	66.2	789.5	130.9	920.4	8,607.9	5,063.8	13,671.7	10.7	63.0	13,671.7	10.7	63.0			
June	5,873.0	7,701.3	63.4	776.8	137.4	914.2	8,615.5	5,073.8	13,689.3	10.6	62.9	13,689.3	10.6	62.9			
July	5,905.4	7,741.6	63.0	793.4	133.0	926.3	8,667.9	5,037.9	13,705.8	10.7	63.2	13,705.8	10.7	63.2			
August	5,806.0	7,679.3	63.0	765.1	141.3	906.4	8,585.7	5,136.5	13,722.2	10.6	62.6	13,722.2	10.6	62.6			
September	5,881.6	7,740.6	59.0	765.6	140.6	926.6	8,686.8	5,051.9	13,738.6	10.7	63.1	13,738.6	10.7	63.1			
October	5,875.7	7,724.9	55.7	747.3	155.2	902.5	8,627.4	5,126.3	13,753.6	10.5	62.7	13,753.6	10.5	62.7			
November	5,838.8	7,656.6	62.7	759.2	136.1	895.3	8,552.0	5,216.6	13,768.6	10.5	62.1	13,768.6	10.5	62.1			
December	5,964.9	7,750.1	88.8	827.5	161.1	988.7	8,738.7	5,044.8	13,783.6	11.3	63.4	13,783.6	11.3	63.4			
1993 —																	
January	5,911.3	7,597.8	96.1	882.7	135.0	1,017.6	8,615.4	5,183.9	13,799.3	11.8	62.4	13,799.3	11.8	62.4			
February	5,890.4	7,606.1	87.8	886.2	116.7	1,052.8	8,658.9	5,156.1	13,814.9	12.2	62.7	13,814.9	12.2	62.7			
March	5,922.1	7,730.1	66.8	814.8	174.4	989.2	8,719.3	5,111.3	13,830.6	11.3	63.0	13,830.6	11.3	63.0			
April	5,878.0	7,662.2	58.4	780.0	150.7	930.8	8,592.9	5,249.9	13,842.8	10.8	62.1	13,842.8	10.8	62.1			
May	5,902.5	7,715.7	56.5	785.7	147.2	932.9	8,648.5	5,206.5	13,855.0	10.8	62.4	13,855.0	10.8	62.4			
Standard error of —																	
May 1993 estimates	22.2	24.3	3.6	10.7	5.4	11.5	25.2	21.3	..	0.1	0.2	..	0.1	0.2			
Apr 93 to May 93 movements	17.1	18.9	3.0	8.1	4.3	8.6	19.8	16.4	..	0.1	0.1	..	0.1	0.1			

TABLE 2. CIVILIAN LABOUR FORCE: SEASONALLY ADJUSTED SERIES

Month	Unemployed							Unemployment rate per cent	Participation rate
	Employed		Looking for full-time work		Looking for part-time work		Labour force		
	Full-time workers	Total	Aged 15-19 looking for first job	Total	Total	Total			
	:000 MALES								
1992 —									
March	4,016.8	4,463.2	36.8	511.4	41.7	553.1	5,016.2	11.0	74.5
April	4,012.2	4,454.7	36.8	515.0	40.7	555.8	5,010.4	11.1	74.3
May	3,988.5	4,443.6	41.3	524.0	41.3	565.3	5,008.8	11.3	74.2
June	3,991.3	4,454.2	42.5	537.1	50.8	588.0	5,042.2	11.7	74.6
July	4,005.8	4,472.2	40.7	538.2	47.0	585.2	5,057.5	11.6	74.8
August	3,993.6	4,462.6	39.7	527.5	50.8	578.3	5,040.9	11.5	74.5
September	3,988.0	4,445.5	38.0	525.2	46.0	571.2	5,016.7	11.4	74.0
October	3,986.7	4,448.8	39.2	541.2	56.1	597.3	5,046.1	11.8	74.4
November	3,976.1	4,416.5	36.7	549.1	54.8	603.9	5,020.3	12.0	73.9
December	3,977.0	4,428.2	29.6	545.4	51.5	596.9	5,025.1	11.9	73.9
1993 —									
January	3,993.5	4,464.6	33.0	549.4	42.2	591.6	5,056.2	11.7	74.3
February	3,993.1	4,420.1	38.1	541.2	47.2	588.4	5,008.5	11.7	73.5
March	4,017.5	4,463.6	34.3	524.5	50.2	574.7	5,038.3	11.4	73.9
April	3,993.3	4,423.5	38.3	536.4	54.2	590.6	5,014.1	11.8	74.4
May	4,010.4	4,444.6	34.5	531.9	51.9	583.8	5,028.4	11.6	73.6
FEMALES									
1992 —									
March	1,893.8	3,236.4	30.4	257.1	93.8	350.9	3,587.4	9.8	51.9
April	1,879.1	3,229.2	32.7	257.2	81.4	338.6	3,567.8	9.5	51.6
May	1,879.4	3,225.4	33.6	257.8	90.3	348.1	3,573.5	9.7	51.6
June	1,872.1	3,239.9	34.6	267.5	101.9	369.4	3,609.3	10.2	52.0
July	1,876.8	3,260.2	36.8	265.1	102.3	367.3	3,627.5	10.1	52.2
August	1,863.3	3,261.8	36.0	258.8	108.4	367.2	3,629.1	10.1	52.2
September	1,870.6	3,247.4	32.9	255.9	105.3	361.2	3,608.6	10.0	51.8
October	1,875.5	3,255.8	32.4	268.6	107.0	375.6	3,631.4	10.3	52.1
November	1,879.7	3,236.1	37.8	264.1	103.2	367.4	3,603.5	10.2	51.6
December	1,893.4	3,235.5	30.8	272.4	104.3	376.7	3,612.2	10.4	51.7
1993 —									
January	1,910.2	3,261.4	30.6	265.0	97.4	362.4	3,623.8	10.0	51.8
February	1,900.7	3,239.1	29.4	266.9	101.1	367.9	3,607.0	10.2	51.5
March	1,923.3	3,263.7	32.8	271.7	94.9	366.6	3,630.3	10.1	51.8
April	1,911.2	3,228.5	27.2	242.2	81.3	323.5	3,552.0	9.1	50.6
May	1,904.7	3,252.3	29.3	244.8	96.1	341.0	3,593.2	9.5	51.2
PERSONS									
1992 —									
March	5,910.6	7,699.6	67.2	768.5	135.5	904.0	8,603.6	10.5	63.1
April	5,891.3	7,683.9	69.5	772.2	122.1	894.3	8,578.3	10.4	62.8
May	5,867.9	7,668.9	74.9	781.9	131.6	913.4	8,582.4	10.6	62.8
June	5,853.4	7,694.1	77.0	804.6	152.7	957.4	8,651.5	11.1	63.2
July	5,882.6	7,732.5	77.5	803.3	149.3	952.5	8,685.0	11.0	63.4
August	5,861.9	7,724.5	75.8	786.3	159.2	945.6	8,670.0	10.9	63.2
September	5,858.5	7,692.9	70.9	781.1	151.3	932.4	8,625.3	10.8	62.8
October	5,862.3	7,704.6	71.5	809.8	163.1	972.9	8,677.5	11.2	63.1
November	5,855.8	7,652.6	74.5	813.2	158.0	971.2	8,623.8	11.3	62.6
December	5,870.4	7,663.7	60.4	817.8	155.8	973.6	8,637.3	11.3	62.7
1993 —									
January	5,903.7	7,726.1	63.6	814.4	139.6	954.0	8,680.0	11.0	62.9
February	5,893.8	7,659.2	67.5	808.0	148.3	956.3	8,615.5	11.1	62.4
March	5,940.9	7,727.3	67.1	796.3	145.1	941.3	8,668.6	10.9	62.7
April	5,904.5	7,652.0	65.5	778.7	135.5	914.2	8,366.1	10.7	61.9
May	5,915.1	7,696.9	63.7	776.8	148.0	924.8	8,621.7	10.7	62.2

TABLE 3. CIVILIAN LABOUR FORCE: TREND SERIES

Month	Unemployed								Labour force	Unemployment rate - per cent -	Participation rate
	Employed		Looking for full-time work		Looking for part-time work		Total	Total			
	Full-time workers	Total	Aged 15-19 looking for first job	Total	Total	Total					
							MALES				
1992 —											
March	4,013.8	4,459.5	36.7	511.0	43.4	554.4	5,013.9	11.1	74.5		
April	4,006.3	4,457.9	38.4	518.0	43.5	561.6	5,019.4	11.2	74.5		
May	4,000.7	4,457.6	39.8	524.2	44.2	568.4	5,026.1	11.3	74.5		
June	3,997.0	4,458.2	40.8	528.8	45.0	574.5	5,032.7	11.4	74.5		
July	3,994.2	4,457.1	41.0	531.8	45.8	579.6	5,036.7	11.5	74.5		
August	3,991.1	4,454.1	40.2	534.0	50.0	584.1	5,038.2	11.6	74.4		
September	3,987.3	4,448.7	38.7	536.8	51.4	588.2	5,037.0	11.7	74.3		
October	3,984.5	4,442.8	36.9	540.0	51.6	591.6	5,034.4	11.8	74.2		
November r	3,983.3	4,438.2	35.4	542.7	50.9	593.6	5,031.8	11.8	74.1		
December r	3,985.1	4,436.5	34.6	544.0	50.0	594.0	5,030.5	11.8	74.0		
1993 —											
January r	3,989.8	4,437.8	34.5	543.1	49.2	592.3	5,030.1	11.8	73.9		
February r	3,995.5	4,439.8	34.8	540.1	49.1	589.1	5,028.9	11.7	73.8		
March r	4,000.8	4,441.0	35.3	536.6	49.5	586.1	5,027.1	11.7	73.7		
April r	4,005.1	4,441.4	35.8	533.3	50.3	583.6	5,025.0	11.6	73.6		
May	4,008.9	4,442.6	36.3	530.7	51.4	582.1	5,024.7	11.6	73.5		
FEMALES											
1992 —											
March	1,891.3	3,232.3	30.9	259.9	91.6	351.4	3,583.7	9.8	51.9		
April	1,886.0	3,234.9	32.6	260.4	91.5	351.9	3,586.8	9.8	51.8		
May	1,880.1	3,238.5	33.9	260.8	93.5	354.3	3,592.8	9.9	51.9		
June	1,874.5	3,243.7	34.7	261.1	97.2	358.4	3,602.0	9.9	51.9		
July	1,871.1	3,248.7	35.2	261.5	101.5	363.0	3,611.7	10.1	52.0		
August	1,870.4	3,251.8	35.3	262.1	104.9	367.0	3,618.9	10.1	52.1		
September	1,872.5	3,251.9	34.9	263.0	106.5	369.5	3,621.4	10.2	52.0		
October	1,871.1	3,250.0	34.2	264.5	106.5	371.0	3,621.0	10.2	52.0		
November r	1,884.4	3,247.5	33.3	266.6	104.9	371.6	3,619.0	10.3	51.9		
December r	1,893.0	3,245.9	32.4	267.9	102.5	370.5	3,616.4	10.2	51.8		
1993 —											
January r	1,901.1	3,246.1	31.5	267.2	99.7	366.9	3,613.0	10.2	51.7		
February r	1,907.1	3,246.9	30.7	264.2	96.7	360.9	3,607.8	10.0	51.5		
March r	1,911.0	3,247.2	29.9	259.7	94.0	353.7	3,601.0	9.8	51.4		
April r	1,913.3	3,247.1	29.2	254.6	91.7	346.4	3,593.5	9.6	51.2		
May	1,914.1	3,247.6	28.5	250.0	90.1	340.0	3,587.7	9.5	51.1		
PERSONS											
1992 —											
March	5,905.1	7,691.8	67.6	770.8	135.0	905.8	8,597.6	10.5	63.0		
April	5,892.3	7,692.8	71.0	778.4	135.1	913.5	8,606.3	10.6	63.0		
May	5,880.9	7,696.2	73.7	785.1	137.7	922.7	8,618.9	10.7	63.0		
June	5,871.5	7,701.9	75.6	790.0	142.8	932.8	8,634.8	10.8	63.1		
July	5,865.3	7,705.8	76.2	793.3	149.4	942.7	8,648.5	10.9	63.1		
August	5,861.6	7,705.9	75.5	796.2	154.9	951.1	8,657.0	11.0	63.1		
September	5,859.8	7,700.6	73.6	799.8	157.9	957.7	8,658.3	11.1	63.0		
October	5,861.5	7,692.8	71.1	804.5	158.1	962.6	8,655.4	11.1	62.9		
November r	5,867.7	7,685.7	68.7	809.3	155.8	965.2	8,650.9	11.2	62.8		
December r	5,878.1	7,682.4	67.0	811.9	152.5	964.4	8,646.8	11.2	62.7		
1993 —											
January r	5,800.9	7,683.9	66.0	810.3	148.9	959.2	8,643.1	11.1	62.6		
February r	5,902.6	7,686.7	65.5	804.2	145.8	950.0	8,636.7	11.0	62.5		
March r	5,911.8	7,688.3	65.2	796.2	143.5	939.8	8,628.0	10.9	62.4		
April r	5,918.4	7,688.5	65.0	788.0	142.0	930.0	8,618.5	10.8	62.3		
May	5,923.0	7,690.3	64.8	780.7	141.4	922.1	8,612.4	10.7	62.2		

TABLE 4. UNEMPLOYED PERSONS: AUSTRALIA

Month	Number looking for full-time work			Number looking for part-time work	Unemployment rate						
	Aged 15-19				Looking for full-time work			Looking for part-time work			
	Looking for first job	Total	Aged 20 and over		Total	Aged 15-19	Aged 20 and over	Total	per cent.		
MALES											
1992 —											
March	36.6	70.5	450.1	520.7	49.1	569.8	30.9	10.5	11.5	9.7	11.3
April	31.9	61.9	444.8	506.7	42.3	549.0	28.2	10.4	11.2	8.5	11.0
May	35.7	67.8	459.5	527.3	41.7	569.0	30.0	10.7	11.7	8.2	11.3
June	32.6	66.4	451.4	517.8	42.7	560.5	30.8	10.5	11.5	8.3	11.2
July	32.1	69.1	465.1	534.1	42.1	576.3	30.3	10.8	11.7	8.4	11.4
August	33.6	67.4	453.7	521.0	43.4	564.4	31.2	10.6	11.6	8.5	11.3
September	33.2	65.7	454.5	520.2	46.5	566.7	31.2	10.5	11.5	9.0	11.3
October	30.4	58.3	444.8	503.0	54.0	557.1	28.2	10.3	11.2	10.4	11.1
November	33.8	60.5	459.2	519.7	44.6	564.2	29.5	10.7	11.6	9.1	11.4
December	43.5	70.3	478.2	548.5	60.2	608.7	30.1	11.0	12.0	12.0	12.0
1993 —											
January	51.8	80.5	514.4	594.8	45.7	640.5	32.2	11.9	13.0	9.4	12.7
February	47.8	81.0	504.6	585.6	54.3	639.9	33.8	11.6	12.8	11.7	12.7
March	34.2	61.4	473.2	534.6	59.1	593.7	28.7	10.9	11.8	11.5	11.8
April	33.2	64.2	463.7	527.9	56.2	584.1	29.9	10.8	11.7	11.2	11.7
May	29.7	60.2	475.8	536.1	52.4	588.5	29.1	11.0	11.8	10.5	11.7
Standard error of —											
May 1993 estimates	2.7	3.7	8.8	9.3	3.5	9.6	1.8	0.2	0.2	0.7	0.2
Apr 93 to May 93 movements	2.5	3.2	6.7	7.0	3.0	7.2	1.5	0.2	0.2	0.6	0.1
FEMALES											
1992 —											
March	30.4	54.5	210.6	265.2	114.2	379.3	36.2	10.5	12.3	7.8	10.5
April	30.2	54.7	212.4	267.2	94.7	361.9	36.6	10.7	12.5	6.5	10.1
May	30.6	57.1	205.1	262.2	89.3	351.5	38.8	10.3	12.3	6.1	9.8
June	30.9	57.2	201.9	259.0	94.7	353.7	38.7	10.3	12.3	6.4	9.8
July	31.0	57.0	202.3	259.2	90.8	350.1	36.4	10.2	12.1	6.2	9.7
August	29.3	50.6	193.4	244.0	97.9	342.0	36.5	9.9	11.7	6.5	9.5
September	25.8	43.1	202.3	245.3	114.1	359.4	31.2	10.2	11.5	7.5	9.8
October	25.3	42.2	202.0	244.2	101.2	345.4	30.5	10.2	11.5	6.8	9.6
November	28.9	45.3	194.3	239.5	91.6	331.1	32.9	9.8	11.3	6.3	9.2
December	45.3	66.4	212.6	279.0	101.0	380.0	38.9	10.4	12.6	7.0	10.4
1993 —											
January	44.3	62.9	225.0	287.9	89.3	377.2	35.7	11.0	13.0	6.7	10.6
February	40.1	59.3	241.1	300.4	112.4	412.9	37.9	11.8	13.7	7.9	11.4
March	32.7	47.5	232.7	280.3	115.3	395.6	35.2	11.3	12.7	7.9	10.8
April	25.1	45.2	207.0	252.1	94.5	346.6	33.1	10.3	11.7	6.6	9.7
May	26.8	44.5	205.1	249.6	94.7	344.4	33.5	10.2	11.6	6.5	9.5
Standard error of —											
May 1993 estimates	2.5	3.2	6.3	6.8	4.5	7.8	2.4	0.3	0.3	0.3	0.2
Apr 93 to May 93 movements	2.3	2.8	4.9	5.3	3.6	5.9	2.0	0.2	0.2	0.3	0.2
PERSONS											
1992 —											
March	67.0	125.0	660.8	785.8	163.3	949.1	33.0	10.5	11.8	8.3	11.0
April	62.2	116.7	657.2	773.8	137.0	910.9	31.6	10.5	11.7	7.0	10.6
May	66.2	124.9	664.6	789.5	130.9	920.4	33.5	10.6	11.9	6.7	10.7
June	63.4	123.6	653.3	776.8	137.4	914.2	34.0	10.5	11.7	6.9	10.6
July	63.0	126.0	667.4	793.4	133.0	926.3	32.8	10.6	11.8	6.8	10.7
August	63.0	118.0	647.1	765.1	141.3	906.4	33.3	10.4	11.6	7.0	10.6
September	59.0	108.8	656.8	765.6	160.6	926.1	31.2	10.4	11.5	7.9	10.7
October	55.7	100.5	646.8	747.3	155.2	902.5	29.2	10.3	11.3	7.7	10.5
November	62.7	105.7	653.5	759.2	136.1	893.3	30.9	10.4	11.5	7.0	10.5
December	88.8	136.7	690.8	827.5	161.1	988.7	33.8	10.8	12.2	8.3	11.3
1993 —											
January	96.1	143.3	739.3	882.7	135.0	1,017.6	33.6	11.6	13.0	7.4	11.8
February	87.8	140.3	745.8	886.0	166.7	1,052.8	35.4	11.7	13.1	8.9	12.2
March	66.8	108.9	705.9	814.8	174.4	989.2	31.2	11.1	12.1	8.8	11.3
April	58.4	109.4	670.7	780.0	150.7	930.8	31.1	10.6	11.7	7.8	10.8
May	56.5	104.7	681.0	785.7	147.2	932.9	30.8	10.7	11.7	7.5	10.8
Standard error of —											
May 1993 estimates	3.6	4.7	10.2	10.7	5.4	11.5	1.4	0.2	0.2	0.3	0.1
Apr 93 to May 93 movements	3.0	3.8	7.6	8.1	4.3	8.6	1.1	0.1	0.1	0.2	0.1

TABLE 5. UNEMPLOYED PERSONS: SEASONALLY ADJUSTED SERIES

Month	Number looking for full-time work				Number looking for part-time work	Unemployment rate					
	Aged 15-19			Total		Looking for full-time work			Looking for part-time work	Total	
	Looking for first job	Total	Aged 20 and over			Aged 15-19	Aged 20 and over	per cent			
MALES											
1992—											
March	36.8	72.5	438.9	511.4	41.7	553.1	31.3	10.2	11.3	8.5	11.0
April	36.8	67.1	447.9	515.0	40.7	555.8	29.6	10.4	11.4	8.4	11.1
May	41.3	71.6	452.4	524.0	41.3	565.3	30.4	10.6	11.6	8.3	11.3
June	42.5	72.5	464.7	537.1	50.8	588.0	32.0	10.8	11.9	9.9	11.7
July	40.7	73.8	464.4	538.2	47.0	585.2	32.1	10.8	11.8	9.2	11.6
August	39.7	70.6	456.9	527.5	50.8	578.3	31.3	10.6	11.7	9.8	11.5
September	38.0	70.0	455.2	525.2	46.0	571.2	31.9	10.6	11.6	9.1	11.4
October	39.2	68.1	473.2	541.2	56.1	597.3	31.2	11.0	12.0	10.8	11.8
November	36.7	65.4	483.6	549.1	54.8	603.9	30.3	11.2	12.1	11.1	12.0
December	29.6	59.3	486.1	545.4	51.5	596.9	28.1	11.3	12.1	10.3	11.9
1993—											
January	33.0	61.7	487.8	549.4	42.2	591.6	28.0	11.3	12.1	8.2	11.7
February	38.1	71.4	469.7	541.2	47.2	588.4	31.9	10.9	11.9	10.0	11.7
March	34.3	63.1	461.5	524.5	50.2	574.7	29.1	10.7	11.5	10.1	11.4
April	38.3	69.6	466.8	536.4	54.2	590.6	31.3	10.8	11.8	11.2	11.8
May	34.5	63.5	468.4	531.9	51.9	583.8	29.5	10.8	11.7	10.7	11.6
FEMALES											
1992—											
March	30.4	55.6	201.5	257.1	93.8	350.9	36.3	10.1	12.0	6.5	9.8
April	32.7	57.2	200.0	257.2	81.4	338.6	37.4	10.1	12.0	5.7	9.5
May	33.6	58.6	199.2	257.8	90.3	348.1	38.8	10.0	12.1	6.3	9.7
June	34.6	62.3	205.2	267.5	101.9	369.4	39.9	10.3	12.5	6.9	10.2
July	36.8	59.2	205.8	265.1	102.3	367.3	38.2	10.4	12.4	6.9	10.1
August	36.0	56.1	202.7	258.8	108.4	367.2	37.5	10.3	12.2	7.2	10.1
September	32.9	45.8	210.1	255.9	105.3	361.2	32.0	10.6	12.0	7.1	10.0
October	32.4	50.8	217.8	268.6	107.0	375.6	34.0	10.9	12.5	7.2	10.3
November	37.8	54.3	209.9	264.1	103.2	367.4	36.1	10.5	12.3	7.1	10.2
December	30.8	52.8	219.6	272.4	104.3	376.7	35.6	10.9	12.6	7.2	10.4
1993—											
January	30.6	51.2	213.8	265.0	97.4	362.4	33.3	10.6	12.2	6.7	10.0
February	29.4	48.9	218.0	266.9	101.1	367.9	33.6	10.8	12.3	7.0	10.2
March	32.8	48.6	223.1	271.7	94.9	366.6	35.3	10.8	12.4	6.6	10.1
April	27.2	47.2	195.0	242.2	81.3	323.5	33.8	9.7	11.2	5.8	9.1
May	29.3	45.7	199.2	244.8	96.1	341.0	33.4	9.9	11.4	6.7	9.5
PERSONS											
1992—											
March	67.2	128.1	640.4	768.5	135.5	904.0	33.3	10.2	11.5	7.0	10.5
April	69.5	124.3	647.9	772.2	122.1	894.3	32.8	10.3	11.6	6.4	10.4
May	74.9	130.2	651.7	781.9	131.6	913.4	33.7	10.4	11.8	6.8	10.6
June	77.0	134.8	669.9	804.6	152.7	957.4	35.2	10.7	12.1	7.7	11.1
July	77.5	135.1	670.2	805.3	149.3	952.5	34.6	10.6	12.0	7.5	11.0
August	75.8	126.7	659.6	786.3	159.2	945.6	33.8	10.5	11.8	7.9	10.9
September	70.9	115.8	665.3	781.1	151.3	932.4	31.9	10.6	11.8	7.6	10.8
October	71.5	118.8	691.0	809.8	163.1	972.9	32.4	11.0	12.1	8.1	11.2
November	74.5	119.7	693.5	813.2	158.0	971.2	32.6	11.0	12.2	8.1	11.3
December	60.4	112.1	705.7	817.8	155.8	973.6	31.2	11.2	12.2	8.0	11.3
1993—											
January	63.6	112.9	701.5	814.4	139.6	954.0	30.2	11.1	12.1	7.1	11.0
February	67.5	120.3	687.7	808.0	148.3	956.3	32.5	10.9	12.1	7.7	11.1
March	67.1	111.6	684.6	796.3	145.1	941.3	31.5	10.7	11.8	7.5	10.9
April	65.5	116.8	661.8	778.7	135.5	914.2	32.3	10.5	11.7	7.2	10.7
May	63.7	109.2	667.6	776.8	148.0	924.8	31.0	10.5	11.6	7.7	10.7

TABLE 6. UNEMPLOYED PERSONS: TREND SERIES

Month	Number looking for full-time work				Number looking for part-time work	Unemployment rate					
	Aged 15-19		Aged 20 and over	Total '000		Looking for full-time work		Looking for part-time work	Total		
	Looking for first job	Total				Aged 15-19	Aged 20 and over			per cent.	
MALES											
1992 —											
March	36.7	69.9	441.0	511.0	43.4	554.4	30.4	10.3	11.3	8.9	11.1
April	38.4	70.7	447.3	518.0	43.5	561.6	30.8	10.4	11.4	8.8	11.2
May	39.8	71.5	452.8	524.2	44.2	568.4	31.1	10.5	11.6	8.8	11.3
June	40.8	72.0	456.8	528.8	45.6	574.5	31.5	10.6	11.7	9.0	11.4
July	41.0	72.0	459.8	531.8	47.8	579.6	31.7	10.7	11.7	9.4	11.5
August	40.2	71.0	463.0	534.0	50.0	584.1	31.7	10.8	11.8	9.8	11.6
September	38.7	69.2	467.6	536.8	51.4	588.2	31.3	10.9	11.9	10.0	11.7
October	36.9	67.0	473.0	540.0	51.6	591.6	30.7	11.0	11.9	10.1	11.8
November r	35.4	65.1	477.6	542.7	50.9	593.6	30.0	11.1	12.0	10.1	11.8
December r	34.6	64.3	479.7	544.0	50.0	594.0	29.7	11.1	12.0	10.0	11.8
1993 —											
January r	34.5	64.4	478.7	543.1	49.2	592.3	29.6	11.1	12.0	9.9	11.8
February r	34.8	65.0	475.1	540.1	49.1	589.1	29.7	11.0	11.9	9.9	11.7
March r	35.3	65.6	470.9	536.6	49.5	586.1	30.0	10.9	11.8	10.1	11.7
April r	35.8	66.1	467.2	533.3	50.3	583.6	30.2	10.8	11.8	10.3	11.6
May	36.3	66.5	464.1	530.7	51.4	582.1	30.4	10.7	11.7	10.6	11.6
FEMALES											
1992 —											
March	30.9	56.8	203.1	259.9	91.6	351.4	36.8	10.2	12.1	6.4	9.8
April	32.6	58.3	202.1	260.4	91.5	351.9	37.9	10.1	12.1	6.4	9.8
May	33.9	59.0	201.8	260.8	93.5	354.3	38.5	10.2	12.2	6.4	9.9
June	34.7	58.5	202.6	261.1	97.2	358.4	38.4	10.2	12.2	6.6	9.9
July	35.2	57.0	204.5	261.5	101.5	363.0	37.6	10.3	12.3	6.9	10.1
August	35.3	55.0	207.1	262.1	104.9	367.0	36.6	10.4	12.3	7.1	10.1
September	34.9	53.2	209.8	263.0	106.5	369.5	35.6	10.6	12.3	7.2	10.2
October	34.2	51.9	212.6	264.5	106.5	371.0	34.8	10.7	12.4	7.2	10.2
November r	33.3	51.3	215.3	266.6	104.9	371.6	34.4	10.8	12.4	7.1	10.3
December r	32.4	51.2	216.8	267.9	102.5	370.5	34.4	10.8	12.4	7.0	10.2
1993 —											
January r	31.5	50.8	216.4	267.2	99.7	366.9	34.4	10.7	12.3	6.9	10.2
February r	30.7	49.9	214.3	264.2	96.7	360.9	34.3	10.6	12.2	6.7	10.0
March r	29.9	48.6	211.1	259.7	94.0	353.7	34.1	10.4	12.0	6.6	9.8
April r	29.2	47.3	207.3	254.6	91.7	346.4	33.9	10.2	11.7	6.4	9.6
May	28.5	46.2	203.8	250.0	90.1	340.0	33.6	10.1	11.6	6.3	9.5
PERSONS											
1992 —											
March	67.6	126.7	644.1	770.8	135.0	905.8	32.9	10.2	11.5	7.0	10.5
April	71.0	129.0	649.4	778.4	135.1	913.5	33.6	10.3	11.7	7.0	10.6
May	73.7	130.5	654.6	785.1	137.7	922.7	34.1	10.4	11.8	7.1	10.7
June	75.6	130.5	659.5	790.0	142.8	932.8	34.2	10.5	11.9	7.2	10.8
July	76.2	129.0	664.3	793.3	149.4	942.7	34.1	10.6	11.9	7.5	10.9
August	75.5	126.0	670.1	796.2	154.9	951.1	33.7	10.7	12.0	7.7	11.0
September	73.6	122.4	677.4	799.8	157.9	957.7	33.0	10.8	12.0	7.9	11.1
October	71.1	118.9	685.6	804.5	158.1	962.6	32.4	10.9	12.1	7.9	11.1
November r	68.7	116.5	692.9	809.3	155.8	965.2	31.8	11.0	12.1	7.9	11.2
December r	67.0	115.4	696.5	811.9	152.5	964.4	31.6	11.0	12.1	7.8	11.2
1993 —											
January r	66.0	115.2	695.1	810.3	148.9	959.2	31.5	11.0	12.1	7.7	11.1
February r	65.5	114.9	689.4	804.2	145.8	950.0	31.6	10.9	12.0	7.6	11.0
March r	65.2	114.3	682.0	796.2	143.5	939.8	31.6	10.7	11.9	7.5	10.9
April r	65.0	113.5	674.5	788.0	142.0	930.0	31.6	10.6	11.7	7.4	10.8
May	64.8	112.7	667.9	780.7	141.4	922.1	31.6	10.5	11.6	7.4	10.7

TABLE 7. LABOUR FORCE STATUS OF CIVILIAN POPULATION AGED 15 TO 19: FULL-TIME ATTENDANCE AT SCHOOL OR A TERTIARY EDUCATIONAL INSTITUTION, MAY 1993

	Employed		Unemployed			Labour force	Not in labour force	Civilian population aged 15-19	Unemployment rate - per cent.	Participation rate
	Full-time workers	Total	Looking for full-time work	Looking for part-time work	Total					
ATTENDING NEITHER SCHOOL NOR A TERTIARY EDUCATIONAL INSTITUTION FULL-TIME										
Males	144.0	172.6	53.5	* 1.8	55.3	227.8	22.0	249.8	24.3	91.2
Females	87.5	126.7	38.2	* 2.8	41.1	167.1	30.5	198.2	24.5	84.6
Persons	231.5	299.2	91.8	4.6	96.4	395.6	52.5	448.1	24.4	88.3
ATTENDING A TERTIARY EDUCATIONAL INSTITUTION FULL-TIME										
Males	* 2.1	29.5	4.0	5.9	9.8	39.3	53.8	93.1	25.0	42.2
Females	* 1.0	44.1	* 3.4	8.9	12.3	56.4	60.7	117.1	21.8	48.2
Persons	* 3.1	73.6	7.4	14.7	22.1	95.7	114.5	210.2	23.1	45.5
ATTENDING SCHOOL										
Males	* 0.3	62.5	* 2.7	17.9	20.6	83.2	234.4	317.5	24.8	26.2
Females	* 0.0	84.0	* 2.8	18.2	21.1	105.1	210.7	315.7	20.0	33.3
Persons	* 0.3	146.6	5.5	36.1	41.7	188.2	445.0	633.3	22.1	29.7
TOTAL										
Males	146.4	264.6	60.2	25.5	85.7	350.3	310.2	660.5	24.5	53.0
Females	88.5	254.8	44.5	29.9	74.4	329.2	301.8	631.1	22.6	52.2
Persons	234.9	519.4	104.7	55.5	160.2	679.6	612.0	1,291.6	23.6	52.6

TABLE 8. LABOUR FORCE STATUS OF CIVILIAN POPULATION AGED 15 AND OVER, STATES AND TERRITORIES, MAY 1993

State or Territory	Employed		Unemployed			Labour force	Not in labour force	Civilian population aged 15 and over	Unemployment rate - per cent.	Participation rate
	Full-time workers	Total	Looking for full-time work	Looking for part-time work	Total					
MALES										
New South Wales	1,327.8	1,474.8	174.2	13.9	188.1	1,662.9	649.0	2,311.9	11.3	71.9
Victoria	1,003.3	1,114.8	150.5	18.4	168.9	1,283.7	450.0	1,733.7	13.2	74.0
Queensland	710.1	788.4	97.8	8.3	106.1	894.5	300.3	1,194.8	11.9	74.9
South Australia	334.9	375.8	45.0	4.3	49.4	425.1	153.0	578.1	11.6	73.5
Western Australia	417.1	461.4	45.6	4.8	50.5	511.8	152.3	664.1	9.9	77.1
Tasmania	99.9	110.7	15.1	* 1.0	16.1	126.8	51.3	178.0	12.7	71.2
Northern Territory	35.4	39.2	2.9	* 0.5	3.4	42.6	16.4	58.9	8.0	72.3
Australian Capital Territory	76.8	86.1	4.9	1.1	6.0	92.1	22.0	114.1	6.5	80.7
Australia	4,005.3	4,451.1	536.1	52.4	588.5	5,039.5	1,794.2	6,833.8	11.7	73.7
FEMALES										
New South Wales	657.7	1,085.2	78.9	30.7	109.6	1,194.8	1,192.7	2,387.5	9.2	50.0
Victoria	480.7	821.3	78.0	27.9	105.9	927.2	873.4	1,800.6	11.4	51.5
Queensland	326.4	574.2	42.3	13.1	55.4	629.6	588.6	1,218.2	8.8	51.7
South Australia	146.4	274.5	18.3	8.1	26.3	300.8	294.0	594.8	8.8	50.6
Western Australia	174.6	323.9	21.6	10.3	31.9	355.8	308.0	663.8	9.0	53.6
Tasmania	42.0	80.9	6.6	* 2.3	8.9	89.8	93.8	183.6	9.9	48.9
Northern Territory	22.5	31.1	1.5	* 0.5	2.0	33.1	22.8	55.8	6.1	59.2
Australian Capital Territory	46.9	73.5	2.7	1.8	4.4	77.9	38.9	116.9	5.7	66.7
Australia	1,897.2	3,264.6	249.6	94.7	344.4	3,609.0	3,412.2	7,021.2	9.5	51.4
PERSONS										
New South Wales	1,985.5	2,560.0	253.1	44.7	297.8	2,857.8	1,841.7	4,699.4	10.4	66.8
Victoria	1,484.0	1,936.1	228.5	46.3	274.8	2,210.9	1,323.4	3,534.3	12.4	62.6
Queensland	1,036.6	1,362.6	140.0	21.5	161.5	1,524.1	889.0	2,413.0	10.6	63.2
South Australia	481.2	650.2	63.3	12.4	75.7	725.9	447.0	1,172.9	10.4	61.9
Western Australia	591.8	785.3	67.2	15.1	82.3	867.6	460.3	1,327.9	9.5	65.3
Tasmania	141.9	191.6	21.6	3.3	25.0	216.6	145.1	361.7	11.5	59.9
Northern Territory	57.9	70.2	4.4	* 1.1	5.4	75.7	39.1	114.8	7.2	65.9
Australian Capital Territory	123.7	159.6	7.6	2.9	10.4	170.1	61.0	231.0	6.1	73.6
Australia	5,902.5	7,715.7	785.7	147.2	932.9	8,648.5	5,206.5	13,855.0	10.8	62.4

TABLE 9. UNEMPLOYED PERSONS, STATES AND TERRITORIES

Month	Number looking for full-time work Aged 15-19			Number looking for part-time work Total '000	Unemployment rate				Total		
	Looking for first job	Total	Aged 20 and over		Looking for full-time work			Looking for part-time work			
					Total	Aged 15-19	Aged 20 and over			Total per cent	
NEW SOUTH WALES											
1992 — May	18.6	37.1	204.3	241.6	42.3	283.7	29.4	9.6	10.7	6.8	9.8
1993 — April	20.1	34.2	219.7	253.9	49.8	303.7	28.2	10.4	11.4	8.4	10.8
May	16.4	28.1	225.0	253.1	44.7	297.8	25.7	10.6	11.3	7.2	10.4
Standard error of —											
May 93 estimates	2.2	2.8	6.5	6.8	3.4	7.2	2.6	0.3	0.3	0.5	0.3
Apr 93 to May 93 movements	2.1	2.5	5.0	5.2	2.9	5.6	2.1	0.2	0.2	0.5	0.2
VICTORIA											
1992 — May	21.9	37.3	190.2	227.5	33.5	261.0	46.1	11.7	13.4	6.7	11.8
1993 — April	18.1	27.5	184.9	212.4	39.9	252.4	37.8	11.3	12.5	8.2	11.5
May	17.7	28.0	200.5	228.5	46.3	274.8	37.8	12.2	13.3	9.3	12.4
Standard error of —											
May 93 estimates	2.1	2.6	5.8	6.1	3.2	6.5	3.5	0.4	0.4	0.6	0.3
Apr 93 to May 93 movements	1.7	2.0	4.1	4.3	2.4	4.6	2.7	0.3	0.3	0.5	0.2
QUEENSLAND											
1992 — May	11.1	20.2	113.7	133.9	23.4	157.3	26.4	10.7	11.8	6.7	10.6
1993 — April	8.3	22.9	116.0	138.9	23.8	162.7	30.9	10.5	11.8	6.9	10.7
May	8.7	23.1	116.9	140.0	21.5	161.5	32.2	10.6	11.9	6.2	10.6
Standard error of —											
May 93 estimates	1.3	2.1	4.0	4.3	2.0	4.6	2.9	0.4	0.4	0.6	0.3
Apr 93 to May 93 movements	1.2	1.7	3.0	3.1	1.7	3.3	2.4	0.3	0.3	0.5	0.2
SOUTH AUSTRALIA											
1992 — May	5.3	12.9	64.8	77.7	10.4	88.0	45.0	12.5	14.2	5.8	12.2
1993 — April	5.2	10.3	57.9	68.2	13.1	81.3	38.8	11.3	12.7	7.0	11.2
May	5.8	9.7	53.6	63.3	12.4	75.7	35.1	10.4	11.6	6.8	10.4
Standard error of —											
May 93 estimates	0.9	1.1	2.3	2.4	1.3	2.6	4.1	0.4	0.4	0.7	0.4
Apr 93 to May 93 movements	0.7	0.9	1.6	1.7	1.0	1.8	3.3	0.3	0.3	0.5	0.3
WESTERN AUSTRALIA											
1992 — May	6.7	12.7	65.4	78.2	13.6	91.7	29.3	10.7	11.9	6.8	10.7
1993 — April	3.1	8.8	63.6	72.4	14.8	87.2	22.8	10.3	11.0	7.1	10.1
May	4.8	11.2	56.0	67.2	15.1	82.3	28.0	9.1	10.2	7.2	9.5
Standard error of —											
May 93 estimates	0.9	1.3	2.5	2.7	1.5	3.0	3.3	0.4	0.4	0.7	0.3
Apr 93 to May 93 movements	0.8	1.1	2.0	2.1	1.2	2.2	2.7	0.3	0.3	0.6	0.3
TASMANIA											
1992 — May	2.4	4.0	15.2	19.2	3.6	22.8	33.9	10.4	12.2	6.9	10.9
1993 — April	2.6	3.7	18.1	21.8	4.1	25.9	33.9	12.0	13.5	7.7	12.1
May	2.3	3.6	18.0	21.6	3.3	25.0	31.6	11.8	13.2	6.3	11.5
Standard error of —											
May 93 estimates	0.4	0.5	0.9	1.0	0.5	1.0	4.4	0.6	0.6	0.9	0.5
Apr 93 to May 93 movements	0.3	0.4	0.7	0.8	0.4	0.8	3.6	0.5	0.5	0.8	0.4
NORTHERN TERRITORY											
1992 — May	*0.1	*0.3	4.0	4.3	*1.0	5.3	*13.0	6.7	6.9	*4.9	6.4
1993 — April	*0.2	*0.7	4.1	4.8	1.3	6.1	*31.4	6.4	7.3	9.1	7.6
May	*0.2	*0.3	4.1	4.4	*1.1	5.4	*12.4	6.8	7.0	*8.0	7.2
Standard error of —											
May 93 estimates	0.1	0.2	0.5	0.6	0.3	0.6	7.6	0.9	0.9	2.2	0.8
Apr 93 to May 93 movements	0.1	0.2	0.4	0.4	0.2	0.5	7.8	0.6	0.6	1.6	0.6
AUSTRALIAN CAPITAL TERRITORY											
1992 — May	*0.1	*0.4	7.0	7.4	3.2	10.6	*11.7	5.9	6.0	8.3	6.6
1993 — April	*0.7	1.1	6.5	7.6	3.9	11.5	26.7	5.2	5.9	10.0	6.9
May	*0.6	*0.8	6.8	7.6	2.9	10.4	*21.4	5.3	5.8	7.4	6.1
Standard error of —											
May 93 estimates	0.2	0.2	0.6	0.6	0.4	0.7	6.1	0.4	0.4	1.0	0.4
Apr 93 to May 93 movements	0.2	0.2	0.4	0.5	0.4	0.5	5.4	0.3	0.4	0.9	0.3

TABLE 10. CIVILIAN LABOUR FORCE, STATES: SEASONALLY ADJUSTED SERIES

Month	Males					Females					Persons							
	Employed		Unemp- loyed - '000 -	Labour force	Unemp- ment rate - per cent -	Employed		Unemp- loyed - '000 -	Labour force	Unemp- ment rate - per cent -	Employed		Unemp- loyed - '000 -	Labour force	Unemp- ment rate - per cent -			
	Full-time workers	Total				Full-time workers	Total				Full-time workers	Total						
NEW SOUTH WALES																		
1992 —																		
March	1,373.5	1,516.0	166.0	1,682.0	9.9	73.6	666.6	1,084.6	108.0	1,192.6	9.1	50.6	2,040.1	2,600.6	274.0	2,874.6	9.5	61.9
April	1,367.4	1,509.1	172.8	1,681.9	10.3	73.6	668.9	1,088.6	108.9	1,197.6	9.1	50.8	2,036.3	2,597.7	281.7	2,879.5	9.8	62.0
May	1,360.5	1,502.6	175.9	1,678.5	10.5	73.4	660.0	1,087.0	107.4	1,194.5	9.0	50.6	2,020.5	2,589.6	283.3	2,872.9	9.9	61.8
June	1,353.4	1,498.1	185.2	1,683.3	11.0	73.5	655.2	1,089.5	114.1	1,203.5	9.5	50.9	2,008.7	2,587.6	299.3	2,886.8	10.4	62.0
July	1,351.2	1,498.6	187.8	1,686.4	11.1	73.6	672.0	1,093.7	113.9	1,207.6	9.4	51.0	2,023.2	2,592.3	301.7	2,894.0	10.4	62.1
August	1,346.4	1,492.8	192.9	1,685.6	11.4	73.5	643.4	1,096.3	119.7	1,216.0	9.8	51.3	1,989.8	2,589.1	312.5	2,901.6	10.8	62.2
September	1,346.1	1,484.0	187.3	1,671.3	11.2	72.8	650.2	1,093.1	114.4	1,207.5	9.5	50.9	1,996.3	2,577.2	301.6	2,878.8	10.5	61.7
October	1,339.5	1,486.9	202.3	1,689.2	12.0	73.5	649.4	1,088.2	126.7	1,214.9	10.4	51.2	1,988.9	2,575.1	329.0	2,904.1	11.3	62.2
November	1,312.6	1,455.9	198.8	1,654.8	12.0	71.9	649.3	1,064.7	113.7	1,178.4	9.6	49.6	1,961.9	2,520.7	312.5	2,833.2	11.0	60.6
December	1,322.9	1,471.3	205.7	1,677.1	12.3	72.8	657.2	1,067.0	114.8	1,181.9	9.7	49.7	1,980.1	2,538.4	320.6	2,858.9	11.2	61.1
1993 —																		
January	1,344.3	1,497.9	192.5	1,690.4	11.4	73.3	667.5	1,077.9	119.5	1,197.4	10.0	50.3	2,011.9	2,575.8	312.0	2,887.8	10.8	61.6
February	1,334.6	1,461.1	204.7	1,665.8	12.3	72.2	666.9	1,077.5	122.5	1,200.0	10.2	50.4	2,001.5	2,538.6	327.2	2,865.9	11.4	61.1
March	1,327.8	1,466.5	191.4	1,657.8	11.5	71.8	648.5	1,059.7	123.3	1,182.9	10.4	49.6	1,976.3	2,526.2	314.6	2,840.8	11.1	60.5
April	1,317.7	1,454.9	195.5	1,650.4	11.8	71.4	663.2	1,056.7	108.7	1,165.4	9.3	48.8	1,980.8	2,511.5	304.2	2,815.8	10.8	60.0
May	1,328.2	1,470.9	189.5	1,660.4	11.4	71.8	657.3	1,077.0	108.3	1,185.3	9.1	49.6	1,985.5	2,547.9	297.7	2,845.7	10.5	60.6
VICTORIA																		
1992 —																		
March	1,009.5	1,126.1	156.8	1,282.9	12.2	74.6	486.9	830.3	98.3	928.6	10.6	52.1	1,496.4	1,956.4	255.1	2,211.4	11.5	63.2
April	1,006.9	1,124.9	149.9	1,274.9	11.8	74.1	472.4	821.6	97.9	919.4	10.6	51.6	1,479.3	1,945.3	247.8	2,194.3	11.3	62.8
May	1,003.7	1,123.5	157.0	1,280.5	12.3	74.4	480.0	820.1	101.1	921.2	11.0	51.6	1,483.7	1,943.7	258.0	2,201.7	11.7	62.6
June	1,009.7	1,134.0	156.5	1,290.5	12.1	74.9	480.7	826.6	105.2	931.9	11.3	52.2	1,490.3	1,960.6	261.7	2,222.3	11.8	63.3
July	1,017.2	1,134.0	162.3	1,296.2	12.5	75.2	479.9	834.7	102.5	937.2	10.9	52.4	1,497.1	1,968.7	264.7	2,233.4	11.9	63.6
August	1,003.6	1,131.9	157.1	1,289.0	12.2	74.7	478.0	826.4	100.4	926.8	10.8	51.8	1,481.5	1,958.3	257.5	2,215.8	11.6	63.0
September	1,007.0	1,132.6	151.5	1,284.1	11.8	74.4	481.0	819.8	99.2	919.0	10.8	51.3	1,488.0	1,952.4	250.7	2,203.1	11.4	62.6
October	1,001.2	1,127.3	159.7	1,286.9	12.4	74.5	471.0	823.9	100.8	924.7	10.9	51.6	1,478.2	1,951.1	260.5	2,211.6	11.8	62.8
November	1,004.6	1,122.3	162.8	1,285.1	12.7	74.4	485.9	832.8	100.7	933.5	10.8	52.0	1,490.4	1,955.1	263.5	2,218.6	11.9	63.0
December	1,003.6	1,123.9	149.9	1,273.9	11.8	73.7	479.9	823.4	105.6	929.0	11.4	51.7	1,483.5	1,947.3	255.5	2,202.8	11.6	62.5
1993 —																		
January	1,002.8	1,117.4	160.7	1,278.2	12.6	73.9	469.8	819.5	96.2	915.7	10.5	51.0	1,472.6	1,936.9	257.0	2,193.9	11.7	62.2
February	1,001.4	1,108.4	157.7	1,266.0	12.5	73.1	475.0	816.2	97.3	913.5	10.6	50.8	1,476.5	1,924.6	254.9	2,179.5	11.7	61.8
March	1,014.8	1,130.9	160.2	1,291.1	12.4	74.5	492.6	836.9	96.7	933.5	10.4	51.9	1,507.4	1,967.8	256.9	2,224.7	11.5	63.0
April	1,009.8	1,118.3	154.1	1,274.2	12.1	73.4	488.5	824.9	89.5	914.4	9.8	50.8	1,498.3	1,943.3	243.5	2,186.8	11.1	61.9
May	1,005.5	1,113.8	169.6	1,283.4	13.2	74.0	489.7	824.1	102.2	926.3	11.0	51.4	1,495.3	1,938.0	271.8	2,209.7	12.3	62.5

TABLE 10. CIVILIAN LABOUR FORCE, STATES: SEASONALLY ADJUSTED SERIES—continued

Month	Males						Females						Persons					
	Employed		Unemp- loyed force '000 -	Labour force	Unemp- loyment rate - per cent -	Partic- ipation rate - per cent -	Employed		Unemp- loyed force '000 -	Labour force	Unemp- loyment rate - per cent -	Partic- ipation rate - per cent -	Employed		Unemp- loyed force '000 -	Labour force	Unemp- loyment rate - per cent -	Partic- ipation rate - per cent -
	Full-time workers	Total					Full-time workers	Total					Full-time workers	Total				
QUEENSLAND																		
1992 —																		
March	692.2	773.8	89.5	863.2	10.4	74.5	314.8	556.3	59.7	616.0	9.7	52.2	1,007.0	1,330.1	149.2	1,479.3	10.1	63.3
April	697.2	775.9	85.7	861.6	9.9	74.2	316.6	558.1	58.3	616.4	9.5	52.1	1,013.8	1,334.1	144.0	1,478.0	9.7	63.1
May	683.0	769.0	93.9	863.0	10.9	74.2	318.3	558.2	58.4	616.6	9.5	52.0	1,001.3	1,327.3	152.3	1,496.6	10.3	63.0
June	688.7	773.6	100.4	874.0	11.5	75.0	319.5	559.1	63.5	622.6	10.2	52.4	1,008.3	1,332.7	163.9	1,496.6	11.0	63.6
July	696.4	782.2	102.4	884.6	11.6	75.7	319.5	565.0	64.2	629.2	10.2	52.9	1,016.0	1,347.2	166.6	1,513.8	11.0	64.2
August	697.5	781.3	94.0	875.2	10.7	74.8	324.6	569.0	60.3	629.4	9.6	52.8	1,022.2	1,350.3	154.3	1,504.6	10.3	63.7
September	698.3	780.6	98.4	878.9	11.2	74.9	320.2	573.2	63.2	636.5	9.9	53.2	1,018.5	1,353.8	161.6	1,515.4	10.7	64.0
October	699.7	781.4	96.9	878.3	11.0	74.7	325.2	575.5	63.3	638.8	9.9	53.3	1,024.9	1,356.9	160.3	1,517.1	10.6	63.9
November	705.3	780.6	103.1	883.7	11.7	75.0	320.3	571.4	66.2	637.7	10.4	53.1	1,025.6	1,352.0	169.4	1,521.4	11.1	63.9
December	703.4	784.4	99.6	884.0	11.3	74.9	326.3	573.6	65.6	639.2	10.3	53.1	1,029.6	1,358.0	165.2	1,523.2	10.8	63.9
1993 —																		
January	701.6	788.2	100.7	888.9	11.3	75.1	340.4	579.7	64.7	644.4	10.0	53.4	1,042.0	1,367.9	165.4	1,533.3	10.8	64.2
February	705.7	788.4	104.8	893.3	11.7	75.3	333.7	569.1	58.2	627.4	9.3	51.9	1,039.3	1,357.6	163.1	1,520.6	10.7	63.5
March	711.3	795.1	98.9	894.0	11.1	75.2	345.9	582.2	61.4	643.6	9.5	53.1	1,057.2	1,377.3	160.3	1,537.6	10.4	64.0
April	714.4	791.6	97.8	889.4	11.0	74.6	330.5	572.8	53.2	626.0	8.5	51.5	1,044.9	1,364.4	151.0	1,515.4	10.0	63.0
May	712.7	789.7	100.2	890.0	11.3	74.5	320.9	570.7	55.7	626.4	8.9	51.4	1,033.6	1,360.4	155.9	1,516.3	10.3	62.8
SOUTH AUSTRALIA																		
1992 —																		
March	331.2	370.3	53.8	424.1	12.7	73.8	144.8	266.8	29.0	295.7	9.8	50.1	476.0	637.0	82.8	719.8	11.5	61.8
April	332.1	369.2	54.7	423.9	12.9	73.7	144.2	266.6	31.5	298.1	10.6	50.5	476.2	635.8	86.2	722.0	11.9	62.0
May	328.5	368.7	57.7	424.4	13.1	73.8	142.3	266.0	32.2	298.2	10.8	50.5	470.8	634.7	87.9	722.6	12.2	62.0
June	328.2	366.9	57.6	424.5	13.6	73.7	142.4	271.7	32.1	303.7	10.6	51.4	470.6	638.6	89.7	728.3	12.3	62.4
July	329.7	368.6	54.5	423.1	12.9	73.4	141.0	273.3	29.0	302.4	9.6	51.1	470.7	641.9	83.6	725.5	11.5	62.1
August	331.4	368.7	55.3	424.0	13.0	73.6	142.4	272.9	30.1	303.0	9.9	51.1	473.8	641.6	85.4	727.0	11.7	62.2
September	328.6	368.9	52.6	421.5	12.5	73.1	148.4	274.5	30.9	305.4	10.1	51.5	473.0	643.4	83.5	726.9	11.5	62.2
October	332.5	373.6	51.7	425.3	12.2	73.7	143.9	273.8	32.6	306.4	10.6	51.7	476.4	647.4	84.3	731.7	11.5	62.5
November	331.9	372.5	54.7	427.1	12.8	74.0	144.5	272.1	33.8	305.9	11.1	51.6	476.4	644.5	88.5	733.1	12.1	62.6
December	331.2	368.6	55.2	423.9	13.0	73.4	146.6	273.0	32.3	305.3	10.6	51.4	477.8	641.6	87.5	729.2	12.0	62.3
1993 —																		
January	328.3	367.3	54.2	421.6	12.9	73.0	148.1	274.8	31.9	306.7	10.4	51.6	476.4	642.2	86.1	728.3	11.8	62.2
February	330.9	372.9	49.3	422.2	11.7	73.1	145.4	274.7	30.8	305.5	10.1	51.4	476.3	647.6	80.1	727.7	11.0	62.1
March	328.2	368.8	53.8	422.6	12.7	73.1	142.7	270.5	30.4	300.9	10.1	50.6	470.9	639.3	84.2	723.5	11.6	61.7
April	325.8	368.9	54.1	423.0	12.8	73.2	142.2	270.5	28.6	299.2	9.6	50.3	467.9	639.5	82.7	722.2	11.5	61.6
May	336.0	376.0	49.7	425.7	11.7	73.6	148.3	273.0	25.8	298.8	8.6	50.2	484.3	649.0	75.5	724.5	10.4	61.8

TABLE 10. CIVILIAN LABOUR FORCE, STATES: SEASONALLY ADJUSTED SERIES—continued

Month	Males								Females				Persons					
	Employed		Unemp- loyed - '000 -	Labour force	Unemp- loyment rate - per cent -	Partic- ipation rate - per cent -	Employed		Unemp- loyed - '000 -	Labour force	Unemp- loyment rate - per cent -	Partic- ipation rate - per cent -	Employed		Unemp- loyed - '000 -	Labour force	Unemp- loyment rate - per cent -	Partic- ipation rate - per cent -
	Full-time workers	Total					Full-time workers	Total					Full-time workers	Total				
WESTERN AUSTRALIA																		
1992 —																		
March	399.8	442.4	59.1	501.5	11.8	76.9	169.1	311.9	35.0	346.9	10.1	53.3	568.9	754.3	94.2	848.4	11.1	65.1
April	401.3	445.0	57.9	502.8	11.5	77.0	168.7	314.0	32.5	346.5	9.4	53.1	570.0	759.0	90.3	849.3	10.6	65.1
May	404.5	447.7	58.1	505.8	11.5	77.3	177.0	317.2	33.6	350.8	9.6	53.7	581.5	764.9	91.8	856.7	10.7	65.5
June	402.9	446.4	55.9	502.3	11.1	76.6	172.4	319.0	34.5	353.5	9.8	54.0	575.3	765.4	90.4	855.7	10.6	65.3
July	403.1	447.5	56.0	503.5	11.1	76.7	172.8	317.5	36.8	354.3	10.4	54.1	575.9	764.9	92.8	857.7	10.8	65.4
August	402.8	448.1	58.0	506.0	11.5	77.0	171.7	313.2	39.3	352.6	11.2	53.8	574.5	761.3	97.3	858.6	11.3	65.4
September	400.8	446.8	56.8	503.6	11.3	76.6	171.8	313.1	37.7	350.9	10.8	53.4	572.6	759.9	94.5	854.4	11.1	65.0
October	406.9	449.2	57.5	506.8	11.4	77.0	172.6	311.3	39.0	350.4	11.1	53.3	579.5	760.6	96.6	857.1	11.3	65.1
November	402.3	446.8	51.3	498.1	10.3	75.5	178.9	316.8	37.0	353.8	10.5	53.7	581.2	763.6	88.3	851.9	10.4	64.6
December	401.1	442.4	56.7	499.1	11.4	75.6	173.0	316.2	37.6	353.8	10.6	53.6	574.0	758.6	94.3	852.9	11.1	64.6
1993 —																		
January	406.3	450.2	52.4	502.6	10.4	76.0	173.1	325.7	35.9	361.6	9.9	54.7	579.4	775.9	88.4	864.2	10.2	65.4
February	408.4	448.1	46.7	494.8	9.4	74.7	167.5	315.6	35.0	350.6	10.0	53.0	575.8	763.7	81.7	845.4	9.7	63.9
March	418.9	465.7	44.2	509.8	8.7	76.9	179.8	327.2	32.5	359.8	9.0	54.3	598.6	792.9	76.7	869.6	8.8	65.6
April	414.7	459.5	52.4	511.8	10.2	77.1	171.5	318.8	32.9	351.7	9.3	53.0	586.1	778.3	85.2	865.5	9.9	65.1
May	417.4	463.6	50.2	513.8	9.8	77.4	177.9	323.1	32.3	355.4	9.1	53.5	595.2	786.6	82.5	869.2	9.5	65.5
TASMANIA																		
1992 —																		
March	99.7	110.9	15.4	126.4	12.2	71.9	42.6	78.8	8.9	87.7	10.2	48.4	142.4	189.7	24.3	214.0	11.4	60.0
April	97.8	109.1	15.5	124.6	12.4	70.9	42.1	79.4	8.0	87.4	9.1	48.2	139.9	188.5	23.5	212.0	11.1	59.4
May	98.0	110.4	15.3	125.7	12.2	71.5	40.5	76.2	9.3	85.5	10.9	47.1	138.5	186.5	24.6	211.2	11.7	59.1
June	98.3	111.0	15.7	126.8	12.4	72.1	39.0	77.7	9.8	87.5	11.2	48.2	137.3	189.8	25.5	214.3	11.9	60.0
July	101.0	111.7	16.7	128.4	13.0	72.9	41.0	79.0	9.4	88.4	10.6	48.6	142.0	190.7	26.1	216.8	12.0	60.6
August	99.5	111.7	16.5	128.2	12.9	72.7	41.3	80.9	8.9	89.8	9.9	49.4	140.8	192.7	25.4	218.1	11.6	60.8
September	99.3	110.3	16.7	127.0	13.1	71.9	40.6	79.1	8.3	87.3	9.5	47.9	139.9	189.4	25.0	214.4	11.7	59.7
October	99.3	110.5	17.8	128.3	13.9	72.5	42.0	80.5	8.4	89.0	9.5	48.7	141.2	191.1	26.2	217.3	12.1	60.5
November	98.9	110.8	16.9	127.7	13.2	72.1	40.6	79.9	8.1	88.0	9.2	48.1	139.5	190.7	25.0	215.6	11.6	59.9
December	98.7	109.3	18.0	127.3	14.2	71.8	39.2	79.2	8.9	88.2	10.1	48.2	137.9	188.5	27.0	215.5	12.5	59.8
1993 —																		
January	99.1	110.3	18.5	128.7	14.4	72.5	41.2	80.7	9.3	90.0	10.3	49.1	140.3	190.9	27.8	218.7	12.7	60.7
February	99.1	110.5	17.2	127.6	13.4	71.8	40.5	78.9	9.4	88.3	10.6	48.2	139.6	189.4	26.5	215.9	12.3	59.8
March	99.6	110.4	17.2	127.6	13.5	71.8	40.4	79.1	8.3	87.4	9.5	47.6	140.0	189.5	25.5	215.0	11.9	59.5
April	97.9	107.5	17.3	124.8	13.9	70.2	41.2	78.8	9.4	88.2	10.6	48.1	139.1	186.3	26.7	213.0	12.5	58.9
May	99.7	110.7	16.9	127.6	13.2	71.6	42.0	80.2	10.0	90.3	11.1	49.2	141.7	190.9	26.9	217.8	12.4	60.2

TABLE II. CIVILIAN LABOUR FORCE, STATES AND TERRITORIES: TREND SERIES

Month	NEW SOUTH WALES																	
	Males						Females											
	Employed		Unemp- loyed	Labour force	Partic- ipation	Employed	Unemp- loyed	Labour force	Partic- ipation	Employed	Unemp- loyed	Labour force						
Full-time workers	Total	'000-		rate - per cent-	Full-time workers	Total	'000-		rate - per cent-	Full-time workers	Total	'000-		rate - per cent-				
1992 —																		
March	1,368.4	1,510.2	171.5	1,681.7	10.2	73.6	664.4	1,083.6	110.1	1,193.7	9.2	50.6	2,032.8	2,593.8	281.5	2,875.4	9.8	62.0
April	1,365.1	1,508.2	173.8	1,682.0	10.3	73.6	665.4	1,086.9	109.5	1,196.4	9.1	50.7	2,030.5	2,595.1	283.2	2,878.4	9.8	62.0
May	1,361.5	1,505.3	177.4	1,682.7	10.5	73.6	664.2	1,089.9	110.2	1,200.1	9.2	50.8	2,025.7	2,595.3	287.6	2,882.9	10.0	62.0
June	1,357.2	1,501.5	181.8	1,683.3	10.8	73.5	660.7	1,092.4	112.3	1,204.7	9.3	50.9	2,017.9	2,593.9	294.1	2,888.0	10.2	62.1
July	1,351.6	1,495.9	186.6	1,682.5	11.1	73.4	656.4	1,093.3	114.8	1,208.1	9.5	51.0	2,008.1	2,589.2	301.4	2,890.6	10.4	62.1
August	1,345.2	1,489.7	191.1	1,680.8	11.4	73.3	652.8	1,091.7	116.7	1,208.4	9.7	51.0	1,998.2	2,581.5	307.8	2,889.3	10.7	62.0
September	1,339.1	1,484.3	194.8	1,679.1	11.6	73.1	651.2	1,088.1	117.9	1,208.0	9.8	50.8	1,990.2	2,572.4	312.7	2,885.0	10.8	61.8
October	1,334.4	1,480.0	197.6	1,677.6	11.8	73.0	651.6	1,083.4	118.5	1,201.9	9.9	50.6	1,986.0	2,563.5	316.1	2,879.5	11.0	61.6
November r	1,331.3	1,476.6	199.5	1,676.1	11.9	72.9	653.7	1,078.2	119.0	1,197.2	9.9	50.4	1,985.0	2,554.8	318.5	2,873.3	11.1	61.4
December r	1,329.8	1,474.0	200.1	1,674.1	12.0	72.7	656.6	1,073.4	119.2	1,192.6	10.0	50.2	1,986.4	2,547.4	319.3	2,866.8	11.1	61.2
1993 —																		
January r	1,329.4	1,472.0	199.4	1,671.4	11.9	72.5	659.2	1,070.2	119.0	1,189.2	10.0	50.0	1,988.6	2,542.2	318.4	2,860.6	11.1	61.1
February r	1,329.3	1,470.0	197.8	1,667.8	11.9	72.3	660.3	1,068.5	118.1	1,186.6	10.0	49.8	1,989.6	2,538.5	315.9	2,854.4	11.1	60.9
March r	1,328.7	1,467.7	195.8	1,663.5	11.8	72.0	660.3	1,067.5	116.6	1,184.1	9.9	49.7	1,989.0	2,531.1	312.5	2,847.6	11.0	60.7
April r	1,327.5	1,465.4	193.7	1,659.2	11.7	71.8	659.9	1,066.8	114.6	1,181.4	9.7	49.5	1,987.5	2,532.2	308.3	2,840.6	10.9	60.5
May	1,327.1	1,464.7	192.1	1,656.8	11.6	71.7	659.2	1,067.4	113.0	1,180.4	9.6	49.4	1,986.3	2,532.1	305.2	2,837.2	10.8	60.4
VICTORIA																		
1992 —																		
March	1,011.9	1,126.9	151.8	1,278.7	11.9	74.4	486.3	829.4	99.6	929.0	10.7	52.1	1,498.1	1,956.3	251.4	2,207.7	11.4	63.0
April	1,009.5	1,127.1	154.3	1,281.4	12.0	74.5	482.0	826.9	100.4	927.3	10.8	52.0	1,491.5	1,954.0	254.7	2,208.7	11.5	63.0
May	1,008.3	1,128.4	155.9	1,284.3	12.1	74.6	479.2	825.4	101.0	926.4	10.9	51.9	1,487.5	1,953.8	257.0	2,210.8	11.6	63.1
June	1,007.9	1,130.1	157.1	1,287.2	12.2	74.7	478.1	825.1	101.5	926.6	11.0	51.9	1,486.1	1,955.2	258.6	2,213.8	11.7	63.1
July	1,008.0	1,131.6	157.7	1,289.2	12.2	74.8	478.6	825.8	101.7	927.5	11.0	51.9	1,486.6	1,957.3	259.4	2,216.7	11.7	63.1
August	1,007.6	1,132.1	157.7	1,289.8	12.2	74.8	479.6	826.6	101.7	928.3	11.0	51.9	1,487.2	1,958.7	259.4	2,218.1	11.7	63.1
September	1,006.1	1,130.6	157.5	1,288.1	12.2	74.6	480.0	826.4	101.5	927.9	10.9	51.8	1,486.1	1,957.0	259.0	2,216.0	11.7	63.0
October	1,004.3	1,127.6	157.4	1,284.9	12.2	74.4	479.4	825.4	101.3	926.7	10.9	51.7	1,483.7	1,953.0	258.7	2,211.6	11.7	62.8
November r	1,003.2	1,124.2	157.1	1,281.3	12.3	74.1	478.5	824.3	100.8	925.1	10.9	51.6	1,481.7	1,948.5	257.9	2,206.3	11.7	62.6
December r	1,003.3	1,121.4	157.1	1,278.6	12.3	73.9	478.4	823.8	100.0	923.8	10.8	51.5	1,481.7	1,945.2	257.1	2,202.4	11.7	62.5
1993 —																		
January r	1,004.6	1,119.8	157.5	1,277.3	12.3	73.8	479.3	824.1	98.8	922.9	10.7	51.4	1,483.9	1,943.9	256.4	2,200.2	11.7	62.4
February r	1,006.1	1,118.9	158.2	1,277.1	12.4	73.8	481.2	824.5	97.5	922.9	10.6	51.3	1,482.7	1,943.4	255.8	2,199.2	11.6	62.3
March r	1,007.4	1,118.4	159.3	1,277.6	12.5	73.7	483.8	825.0	96.5	921.5	10.5	51.2	1,491.1	1,943.4	255.7	2,199.1	11.6	62.3
April r	1,008.4	1,117.9	160.5	1,278.5	12.6	73.8	486.6	825.5	95.9	921.4	10.4	51.2	1,495.0	1,943.4	256.4	2,199.8	11.6	62.3
May	1,009.0	1,117.6	162.0	1,279.6	12.7	73.8	488.9	825.8	95.6	921.4	10.4	51.2	1,497.9	1,943.4	257.7	2,201.0	11.7	62.3

TABLE 11. CIVILIAN LABOUR FORCE, STATES AND TERRITORIES: TREND SERIES—continued

Month	Males					Females					Persons							
	Employed		Unemp- loyed - '000 -	Labour force	Unemp- pation rate - per cent -	Employed		Unemp- loyed - '000 -	Labour force	Unemp- pation rate - per cent -	Employed		Unemp- loyed - '000 -	Labour force	Unemp- pation rate - per cent -			
	Full-time workers	Total				Full-time workers	Total				Full-time workers	Total						
QUEENSLAND																		
1992 —																		
March	692.6	773.3	90.8	864.1	10.5	74.6	319.4	558.1	59.9	618.0	9.7	52.4	1,012.0	1,331.4	150.8	1,482.1	10.2	63.4
April	691.3	773.6	92.2	865.8	10.6	74.6	318.5	558.5	60.3	618.9	9.7	52.3	1,009.8	1,332.1	152.5	1,484.7	10.3	63.4
May	690.8	774.6	93.9	868.5	10.8	74.7	318.3	559.6	60.7	620.3	9.8	52.3	1,009.1	1,334.1	154.6	1,488.7	10.4	63.4
June	691.4	776.0	95.8	871.9	11.0	74.8	318.9	561.8	61.2	622.9	9.8	52.4	1,010.3	1,337.8	157.0	1,494.8	10.5	63.5
July	693.3	777.7	97.5	875.2	11.1	74.9	319.9	564.8	61.8	626.7	9.9	52.6	1,013.2	1,342.5	159.3	1,501.9	10.6	63.7
August	696.0	779.4	98.5	877.8	11.2	75.0	320.9	568.2	62.9	631.1	10.0	52.9	1,016.9	1,347.6	161.3	1,508.9	10.7	63.8
September	698.6	780.7	99.0	879.7	11.2	75.0	321.8	571.1	63.8	634.9	10.0	53.1	1,020.4	1,351.8	162.7	1,514.5	10.7	63.9
October	700.6	781.8	99.4	881.2	11.3	75.0	323.4	573.2	64.5	637.6	10.1	53.2	1,024.1	1,355.0	163.8	1,518.8	10.8	64.0
November r	702.1	783.2	100.0	883.1	11.3	75.0	326.5	574.5	64.7	639.2	10.1	53.2	1,028.6	1,357.7	164.6	1,522.3	10.8	64.0
December r	703.4	784.9	100.7	885.7	11.4	75.0	330.1	575.1	64.2	639.3	10.0	53.1	1,033.5	1,360.0	164.9	1,525.0	10.8	64.0
1993 —																		
January r	705.1	787.2	101.2	888.3	11.4	75.1	333.2	575.3	62.9	638.2	9.9	52.9	1,038.3	1,362.4	164.1	1,526.5	10.7	63.9
February r	707.2	789.3	101.0	890.3	11.3	75.1	334.9	575.2	61.0	636.2	9.6	52.6	1,042.1	1,364.5	161.9	1,526.4	10.6	63.7
March r	709.5	790.9	100.5	891.4	11.3	75.0	335.0	575.0	58.8	633.8	9.3	52.3	1,044.4	1,365.8	159.4	1,525.2	10.4	63.5
April r	711.6	792.0	100.0	892.0	11.2	74.8	333.7	574.4	56.9	631.3	9.0	52.0	1,045.3	1,366.4	156.9	1,523.4	10.3	63.3
May	713.2	792.7	99.4	892.0	11.1	74.7	331.9	573.9	55.1	629.0	8.8	51.6	1,045.1	1,366.6	154.5	1,521.1	10.2	63.0
SOUTH AUSTRALIA																		
1992 —																		
March	330.8	369.6	54.0	423.6	12.7	73.7	145.0	267.2	30.4	297.6	10.2	50.4	475.8	636.8	84.4	721.2	11.7	61.9
April	330.3	369.0	55.0	424.0	13.0	73.7	143.8	267.4	30.7	298.1	10.3	50.5	474.1	636.4	85.7	722.1	11.9	62.0
May	329.8	368.4	55.7	424.0	13.1	73.7	142.9	268.6	30.8	299.3	10.3	50.7	472.7	636.9	86.4	723.4	11.9	62.0
June	329.5	368.2	55.7	423.9	13.1	73.6	142.5	270.2	30.8	301.0	10.2	50.9	472.0	638.4	86.5	724.9	11.9	62.1
July	329.6	368.6	55.2	423.8	13.0	73.5	142.7	271.8	30.9	302.7	10.2	51.1	472.3	640.4	86.1	726.5	11.8	62.2
August	330.1	369.3	54.6	423.9	12.9	73.5	143.4	273.0	31.1	304.0	10.2	51.3	473.4	642.3	85.6	727.9	11.8	62.3
September	330.6	370.0	54.1	424.1	12.7	73.5	144.4	273.6	31.5	305.1	10.3	51.5	475.0	643.7	85.5	729.2	11.7	62.3
October	331.1	370.6	53.7	424.3	12.6	73.5	145.4	273.9	32.0	305.9	10.5	51.6	476.4	644.5	85.6	730.1	11.7	62.4
November r	331.0	370.6	53.5	424.1	12.6	73.5	146.0	273.8	32.5	306.3	10.6	51.6	477.0	644.4	86.0	730.4	11.8	62.4
December r	330.5	370.3	53.4	423.8	12.6	73.4	146.0	273.5	32.5	306.0	10.6	51.5	476.4	643.9	85.9	729.8	11.8	62.3
1993 —																		
January r	329.9	370.0	53.3	423.3	12.6	73.3	145.6	273.2	31.9	305.1	10.4	51.4	475.5	643.2	85.2	728.4	11.7	62.2
February r	329.5	370.0	53.0	423.0	12.5	73.2	145.2	272.9	30.9	303.7	10.2	51.1	474.7	642.9	83.8	726.7	11.5	62.0
March r	329.5	370.5	52.5	423.0	12.4	73.2	145.0	272.5	29.7	302.2	9.8	50.8	474.5	642.9	82.2	725.2	11.3	61.8
April r	329.8	371.1	52.0	423.2	12.3	73.2	144.9	272.1	28.6	300.7	9.5	50.6	474.7	643.2	80.6	723.8	11.1	61.7
May	330.4	372.0	51.5	423.5	12.2	73.3	144.9	271.8	27.5	299.3	9.2	50.3	475.3	643.9	78.9	722.8	10.9	61.6

TABLE 11. CIVILIAN LABOUR FORCE, STATES AND TERRITORIES: TREND SERIES—continued

Month	Males								Females					Persons				
	Employed		Unemp-loyed - '000 -	Labour force	Unemp- loyment rate - per cent -	Partic- ipation rate - per cent -	Employed		Unemp-loyed - '000 -	Labour force	Unemp- loyment rate - per cent -	Partic- ipation rate - per cent -	Employed		Unemp-loyed - '000 -	Labour force	Unemp- loyment rate - per cent -	Partic- ipation rate - per cent -
	Full-time workers	Total					Full-time workers	Total					Full-time workers	Total				
WESTERN AUSTRALIA																		
1992 —																		
March	401.3	443.7	58.0	501.7	11.6	76.9	169.2	313.0	34.7	347.7	10.0	53.4	570.5	756.7	92.7	849.4	10.9	65.2
April	401.7	444.7	57.8	502.6	11.5	76.9	170.6	314.7	34.2	348.9	9.8	53.5	572.3	759.4	92.0	851.4	10.8	65.2
May	402.2	445.9	57.6	503.5	11.4	76.9	171.8	315.9	34.4	350.3	9.8	53.6	574.1	761.8	92.0	853.8	10.8	65.3
June	402.8	447.0	57.3	504.3	11.4	76.9	172.6	316.4	35.2	351.5	10.0	53.7	575.4	763.4	92.5	855.9	10.8	65.3
July	403.1	447.6	57.0	504.6	11.3	76.9	173.0	315.8	36.4	352.2	10.3	53.8	576.1	763.4	93.4	856.8	10.9	65.3
August	403.1	447.7	56.8	504.5	11.3	76.8	173.3	314.9	37.5	352.4	10.7	53.7	576.3	762.6	94.4	856.9	11.0	65.3
September	402.7	447.1	56.7	503.8	11.2	76.6	173.4	314.2	38.3	352.5	10.9	53.7	576.1	761.3	94.9	856.2	11.1	65.1
October	402.5	446.4	56.0	502.4	11.1	76.3	173.5	314.4	38.4	352.8	10.9	53.6	576.1	760.8	94.4	855.2	11.0	65.0
November r	403.1	446.3	54.6	501.0	10.9	76.0	173.6	315.7	37.9	353.6	10.7	53.7	576.7	762.1	92.5	854.6	10.8	64.8
December r	404.7	447.5	52.9	500.4	10.6	75.8	173.6	317.7	36.9	354.6	10.4	53.8	578.3	765.2	89.8	855.0	10.5	64.8
1993 —																		
January r	407.1	450.0	51.1	501.1	10.2	75.8	173.5	319.6	35.8	355.4	10.1	53.8	580.6	769.6	86.9	856.5	10.1	64.8
February r	410.0	453.3	49.8	503.1	9.9	76.0	173.5	321.0	34.7	355.7	9.8	53.8	583.5	774.3	84.5	858.9	9.8	64.9
March r	412.9	457.0	48.9	505.9	9.7	76.3	173.9	321.9	33.7	355.6	9.5	53.7	586.8	778.9	82.7	861.6	9.6	65.0
April r	415.5	460.4	48.5	508.9	9.5	76.7	174.5	322.5	32.8	355.3	9.2	53.6	590.0	782.9	81.4	864.2	9.4	65.1
May	417.9	463.4	48.6	512.0	9.5	77.1	175.0	322.7	32.2	354.9	9.1	53.5	592.9	786.1	80.8	866.9	9.3	65.3
TASMANIA																		
1992 —																		
March	99.6	110.8	15.2	126.0	12.1	71.7	41.9	78.6	8.7	87.3	10.0	48.2	141.6	189.3	23.9	213.3	11.2	59.8
April	99.1	110.6	15.4	126.0	12.2	71.7	41.5	78.3	8.9	87.2	10.2	48.1	140.6	188.9	24.3	213.2	11.4	59.7
May	98.8	110.6	15.6	126.2	12.4	71.8	41.0	78.2	9.1	87.3	10.4	48.1	139.8	188.8	24.7	213.5	11.6	59.8
June	98.9	110.8	15.9	126.7	12.6	72.0	40.7	78.4	9.2	87.6	10.5	48.3	139.6	189.2	25.1	214.3	11.7	60.0
July	99.2	111.0	16.3	127.3	12.8	72.2	40.6	78.8	9.1	87.9	10.3	48.4	139.7	189.8	25.3	215.1	11.8	60.1
August	99.4	111.1	16.6	127.7	13.0	72.4	40.7	79.3	8.9	88.2	10.1	48.5	140.1	190.4	25.5	215.9	11.8	60.2
September	99.5	110.9	17.0	127.9	13.3	72.4	40.8	79.8	8.7	88.5	9.8	48.5	140.3	190.8	25.7	216.4	11.9	60.3
October	99.3	110.7	17.3	128.0	13.5	72.4	40.8	80.1	8.6	88.6	9.7	48.6	140.2	190.8	25.9	216.6	11.9	60.3
November r	99.1	110.4	17.6	128.0	13.7	72.3	40.7	80.0	8.5	88.6	9.6	48.5	139.8	190.4	26.1	216.6	12.1	60.2
December r	99.0	110.2	17.7	127.9	13.8	72.1	40.5	79.8	8.7	88.5	9.8	48.4	139.5	190.0	26.4	216.3	12.2	60.1
1993 —																		
January r	99.0	110.0	17.7	127.7	13.9	72.0	40.5	79.6	8.9	88.5	10.0	48.3	139.5	189.6	26.6	216.2	12.3	60.0
February r	99.0	109.9	17.6	127.5	13.8	71.7	40.6	79.5	9.0	88.5	10.2	48.3	139.6	189.3	26.6	216.0	12.3	59.8
March r	99.0	109.7	17.4	127.1	13.7	71.5	40.9	79.4	9.2	88.6	10.4	48.3	139.9	189.1	26.6	215.7	12.3	59.7
April r	99.0	109.6	17.2	126.8	13.6	71.3	41.1	79.3	9.4	88.7	10.6	48.3	140.2	188.9	26.6	215.5	12.3	59.6
May	99.1	109.5	17.1	126.6	13.5	71.1	41.5	79.4	9.5	88.9	10.7	48.4	140.6	188.9	26.6	215.6	12.4	59.6

TABLE II. CIVILIAN LABOUR FORCE, STATES AND TERRITORIES: TREND SERIES—continued

Month	Males					Females					Persons							
	Employed		Unemp- loyed	Labour force	Partic- ipation rate	Employed		Unemp- loyed	Labour force	Unemp- ipation rate	Employed		Unemp- loyed	Labour force	Unemp- ipation rate			
	Full-time workers	Total				Full-time workers	Total				Full-time workers	Total						
NORTHERN TERRITORY																		
1992—																		
March	34.6	41.7	4.3	46.0	9.3	79.1	20.6	33.7	2.2	35.9	6.0	65.1	55.2	75.4	6.4	81.9	7.9	72.3
April	34.9	42.2	4.0	46.1	8.6	79.4	20.6	33.8	2.2	36.0	6.0	65.2	55.5	76.0	6.1	82.1	7.5	72.5
May	35.3	42.5	3.7	46.2	8.1	79.6	20.6	33.6	2.2	35.8	6.1	64.8	55.9	76.1	5.9	82.1	7.2	72.4
June	35.7	42.6	3.6	46.2	7.8	79.6	20.6	33.3	2.2	35.5	6.2	64.1	56.3	75.9	5.8	81.7	7.1	72.0
July	36.0	42.5	3.6	46.1	7.8	79.2	20.6	32.9	2.2	35.0	6.2	63.3	56.5	75.4	5.8	81.1	7.1	71.5
August	36.1	42.2	3.7	45.9	8.1	78.7	20.6	32.5	2.2	34.7	6.2	62.7	56.7	74.7	5.9	80.6	7.3	70.9
September	36.0	41.7	3.9	45.6	8.5	78.0	20.9	32.4	2.2	34.5	6.2	62.3	56.9	74.1	6.1	80.1	7.6	70.4
October	36.0	41.1	4.1	45.2	9.0	77.1	21.3	32.2	2.2	34.4	6.4	62.0	57.3	73.3	6.2	79.5	7.9	69.7
November r	36.0	40.5	4.2	44.7	9.4	76.1	21.9	32.0	2.3	34.3	6.8	61.8	57.8	72.5	6.5	79.0	8.2	69.2
December r	36.0	40.0	4.2	44.3	9.6	75.2	22.4	31.8	2.5	34.4	7.4	61.8	58.4	71.9	6.8	78.7	8.6	68.7
1993—																		
January r	35.9	39.7	4.2	43.9	9.6	74.6	22.9	31.7	2.8	34.5	8.0	61.9	58.8	71.4	7.0	78.4	8.9	68.4
February r	35.9	39.5	4.1	43.6	9.4	74.1	23.3	31.7	2.9	34.6	8.4	62.1	59.2	71.2	7.0	78.2	8.9	68.2
March (a) r	35.9	39.4	4.0	43.4	9.2	73.6	23.5	31.7	3.0	34.7	8.5	62.2	59.4	71.1	6.9	78.1	8.9	68.1
April (a) r	35.8	39.3	3.9	43.2	9.0	73.3	23.7	31.8	3.0	34.8	8.6	62.3	59.6	71.1	6.9	77.9	8.8	67.9
May (a)	35.8	39.3	3.7	43.0	8.7	73.0	23.8	31.9	2.9	34.8	8.3	62.4	59.6	71.2	6.6	77.8	8.5	67.8
AUSTRALIAN CAPITAL TERRITORY																		
1992—																		
March	73.6	82.5	6.8	89.3	7.6	80.5	42.3	66.5	4.9	71.3	6.8	63.1	116.0	149.0	11.7	160.6	7.3	71.7
April	74.2	82.6	6.9	89.6	7.7	80.6	42.2	66.2	5.0	71.2	7.0	62.8	116.4	148.9	11.9	160.8	7.4	71.6
May	74.8	82.9	7.0	89.9	7.7	80.7	41.8	66.1	5.4	71.5	7.6	62.9	116.6	149.0	12.4	161.4	7.7	71.7
June	75.5	83.4	7.0	90.4	7.7	80.9	41.2	66.2	6.0	72.2	8.3	63.4	116.6	149.6	13.0	162.6	8.0	72.1
July	75.9	83.8	7.1	90.9	7.8	81.3	40.7	66.7	6.5	73.2	8.9	64.1	116.6	150.5	13.6	164.1	8.3	72.6
August	76.0	84.3	7.2	91.5	7.8	81.6	40.8	67.6	6.8	74.4	9.1	65.0	116.9	151.9	14.0	165.9	8.4	73.2
September	76.1	84.9	7.2	92.1	7.8	82.0	41.6	68.9	6.7	75.6	8.9	65.8	117.7	153.7	13.9	167.6	8.3	73.8
October	76.1	85.4	7.1	92.5	7.7	82.2	42.9	70.2	6.4	76.6	8.3	66.5	119.0	155.6	13.5	169.0	8.0	74.3
November r	76.2	85.8	6.9	92.7	7.4	82.4	44.4	71.2	5.9	77.2	7.7	66.9	120.6	157.1	12.8	169.9	7.6	74.5
December r	76.5	86.2	6.7	92.9	7.2	82.4	45.6	71.8	5.6	77.4	7.2	67.0	122.1	158.0	12.3	170.3	7.2	74.6
1993—																		
January r	76.7	86.4	6.4	92.8	6.9	82.2	46.4	71.9	5.5	77.4	7.1	66.8	123.1	158.3	11.9	170.2	7.0	74.4
February r	76.9	86.5	6.3	92.8	6.7	81.9	46.7	71.7	5.5	77.2	7.1	66.5	122.6	158.2	11.7	169.9	6.9	74.1
March (a) r	77.0	86.5	6.2	92.7	6.7	81.7	46.8	71.5	5.4	76.9	7.0	66.1	123.3	158.0	11.6	169.6	6.8	73.8
April (a) r	77.1	86.4	6.1	92.5	6.6	81.3	46.8	71.3	5.3	76.6	6.9	65.7	123.9	157.7	11.4	169.2	6.8	73.4
May (a)	77.2	86.3	6.1	92.4	6.6	81.0	46.8	71.2	5.2	76.4	6.7	65.3	124.0	157.5	11.3	168.8	6.7	73.1

(a) These estimates may be subject to significant revisions as data for later months become available

EXPLANATORY NOTES

Introduction

This publication contains preliminary estimates of the civilian labour force derived from the labour force survey component of the monthly population survey. Estimates for the current month are preliminary and subject to revision. Revised estimates for the current month and more detailed estimates will be published in *The Labour Force, Australia* (6203.0).

The population survey

2. The population survey is based on a multi-stage area sample of private dwellings (currently about 29,000 houses, flats, etc.) and a list sample of non-private dwellings (hotels, motels, etc.), and covers about one half of one per cent of the population of Australia. The information is obtained from the occupants of selected dwellings by carefully chosen and specially trained interviewers. The interviews are generally conducted during the two weeks beginning on the Monday between the 6th and 12th of each month. The information obtained relates to the week before the interview (i.e. the reference week).

Scope

3. The Labour Force Survey includes all persons aged 15 and over except: members of the permanent defence forces; certain diplomatic personnel of overseas governments, customarily excluded from census and estimated populations; overseas residents in Australia; and members of non-Australian defence forces (and their dependants) stationed in Australia.

Coverage

4. In the Labour Force Survey, coverage rules are applied which aim to ensure that each person is associated with only one dwelling, and hence has only one chance of selection. The coverage rules are, necessarily, a balance between theoretical and operational considerations. Nevertheless, the chance of a person being enumerated at two separate dwellings in the survey is considered to be negligible.

Population benchmarks

5. New benchmarks based on the results of the 1986 Census of Population and Housing were introduced in the February 1989 issue of this publication. Labour force estimates were revised for the period January 1984 to January 1989. All estimates produced after January 1989 are based on the new benchmarks.

Revision of series

6. From April 1986, the definition of employed persons was changed to include persons who worked without pay between 1 and 14 hours per week in a family business or on a farm (i.e. unpaid family helpers). For further information, see paragraphs 36 and 37 of the Explanatory Notes to the February 1987 issue of *The Labour Force, Australia* (6203.0).

7. The LFS sample has been redesigned and reselected using information collected in the 1991 Population Census. The new sample was phased in over the period September to December 1992. For details, see *Information Paper Labour Force Survey Sample Design* (6269.0).

Survey sample redesign

8. For the most part, one quarter of the new sample was introduced each month so that, by December 1992, the entire new sample was in place. Replacement generally occurred at the rotation group level with two groups being substituted each month. Such a pattern of implementation meant that any changes to labour force estimates due to differences between the two samples, or any other influences, were spread over the four months rather than being concentrated in one inter-month period.

9. This phase-in scheme applied to the private dwelling sample in urban areas. The new sample for non-private dwellings and private dwellings in rural areas was introduced in a single stage in November 1992.

10. Two types of error are possible in an estimate based on a sample survey: sampling error and non-sampling error. The *sampling error* is a measure of the variability that occurs by chance because a sample, rather than the entire population, is surveyed. One measure of the likely difference resulting from not including all dwellings in the survey is given by the *standard error*. There are about two chances in three that a sample estimate will differ by less than one standard error from the figure that would have been obtained if all dwellings had been included in the survey, and about nineteen chances in twenty that the difference will be less than two standard errors.

Reliability of the estimates

11. Standard errors of estimates for the latest month and of estimates of movements since the previous month are shown in the tables. Standard errors of other estimates and other movements may be determined by using information in the Technical Notes in *The Labour Force, Australia* (6203.0).

12. The smaller the estimate the higher is the relative standard error. Very small estimates are subject to high standard errors (relative to the size of the estimate) which detract seriously from their value for most reasonable uses. In the tables in this publication, only estimates with relative standard errors of 25 per cent or less, and percent-

ages based on such estimates, are considered sufficiently reliable for most purposes. However, estimates and percentages with larger relative standard errors have been included and are preceded by an asterisk (eg. * 3.4) to indicate they are subject to high standard errors and should be used with caution.

13. Examples of the calculation and use of standard errors are given below:

- (a) An estimate of 500,000 employed persons aged 15 to 19 has a standard error of about 9,000. Therefore there are about two chances in three that the number that would have been produced if all dwellings had been included in the survey will be within the range 491,000 to 509,000 and about nineteen chances in twenty that the number will be within the range 482,000 to 518,000.
- (b) Consider estimates for females employed part time in Australia of 1,387,000 in one month and 1,400,000 in the next month. This represents an upward movement of 13,000 with a standard error of 9,800. Therefore, there are about two chances in three that if all dwellings had been included in the surveys, the movement would have been in the range +3,200 to +22,800, and about nineteen chances in twenty that it would have been within the range -6,600 to +32,600.

14. The imprecision due to sampling variability, which is measured by the standard error, should not be confused with inaccuracies that may occur because of imperfections in reporting by respondents, errors made in collection such as in recording and coding of data, and errors made in processing the data. Inaccuracies of this kind are referred to as the *non-sampling error*, and they may occur in any enumeration, whether it be a full count or a sample. Every effort is made to reduce the non-sampling error to a minimum by careful design of questionnaires, intensive training and supervision of interviewers and efficient operating procedures.

Seasonal adjustment and trend estimation

15. Seasonally adjusted series are published in Tables 2, 5 and 10. Seasonal adjustment is a means of removing the estimated effects of normal seasonal variation from the series so that the effects of other influences on the series can be more clearly recognised. Seasonal adjustment does not aim to remove the irregular or non-seasonal influences which may be present in any particular month. This means that month-to-month movements of the seasonally adjusted estimates may not be reliable indicators of trend behaviour. For example, irregular factors unrelated to the trend account for more than half the seasonally adjusted movement with the following frequency:

Employment:	5 in 10 monthly movements
Unemployment:	7 in 10 monthly movements
Unemployment rate:	7 in 10 monthly movements
Participation rate:	9 in 10 monthly movements

16. Smoothing seasonally adjusted series produces a measure of trend by reducing the impact of the irregular component of the series. The trend estimates have been derived by applying a 13-term Henderson-weighted moving average to the series. Trend series are used to analyse the underlying behaviour of the series over time. These are published in Tables 3, 6 and 11.

17. While this smoothing technique enables estimates to be produced for the latest month, it does result in revisions to the most recent months as additional observations become available. Generally, subsequent revisions become smaller, and after three months have a negligible impact on the series. There will also be revisions as a result of the annual review of seasonal factors.

18. Trend estimates for the Australian Capital Territory and the Northern Territory are published in Table 11. Unadjusted series for the two Territories have shown, historically, a high degree of variability, which can lead to considerable revisions to the seasonally adjusted estimates after each annual seasonal factor re-analysis. Seasonally adjusted estimates are not currently published for the two Territories. The most recent six months trend estimates are subject to revision. For the three most recent months, the revision may be relatively large. Inferences about trends drawn from smoothed seasonally adjusted (trend) estimates for months earlier than the latest three months are unlikely to be affected by month to month revisions. They may be affected by revision resulting from the annual re-analysis of seasonal factors.

19. Analyses showing the revisions to trend estimates of employment and the unemployment rate that would occur given certain movements in the seasonally adjusted estimates, are shown on page 4. Similar analyses can be undertaken using different variables. For further information about trend revisions and the availability of unpublished analyses, contact Heather Crawford on (06) 252 6525.

Semi-logarithmic graphs

20. Graphs on page 2 have been drawn using a logarithmic vertical scale to aid comparison of rates of growth in series of differing magnitude. Equal distances on the vertical scale (over equal time periods) indicate equal rates of growth for graphs on the same page.

21. Users may wish to refer to the ABS Information Papers *A Guide to Smoothing Time Series - Estimates of Trend* (1316.0), and *Time Series Decomposition - an Overview* (1317.0) for more detailed information on smoothing of seasonally adjusted time series data.

Related publications

22. Users may also wish to refer to *The Labour Force, Australia* (6203.0). This publication contains a detailed list of related publications which are available on request.

23. Current publications produced by the ABS are listed in the *Catalogue of Publications and Products, Australia* (1101.0). The ABS also issues, on Tuesdays and Fridays, a *Publications Advice* (1105.0) which lists publications to be released in the next few days. The Catalogue and Publications Advice are available from any ABS office.

Unpublished statistics

24. As well as the statistics included in this and related publications, the ABS has other relevant unpublished data available. Inquiries should be made to Heather Crawford on Canberra (06) 252 6525 or any ABS State office.

Symbols and other usages

* subject to sampling variability too high for most practical uses. See the Technical Notes in 6203.0 for more details.

. . not applicable

r revised

25. Estimates have been rounded and discrepancies may occur between sums of the component items and totals.

Forthcoming issues

26. The following table shows the dates on which *The Labour Force, Australia, Preliminary* (6202.0) publication is scheduled to be released.

Issue	Release Date
1993 June	8 July 1993
July	12 August 1993
August	9 September 1993
September	7 October 1993
October	11 November 1993
November	9 December 1993

IAN CASTLES
Australian Statistician

GLOSSARY

Actively looking for work: Includes writing, telephoning or applying in person to an employer for work; answering a newspaper advertisement for a job; checking factory or Commonwealth Employment Service noticeboards; being registered with the Commonwealth Employment Service; checking or registering with any other employment agency; advertising or tendering for work; and contacting friends or relatives.

Attending school: Persons aged 15 to 19 who, during the reference week, were enrolled full time at secondary or high schools.

Attending tertiary educational institution full time: Persons aged 15 to 24 who, during the reference week, were enrolled full time at a TAFE college, university, or other educational institution.

Average absolute percentage change: The average monthly percentage change (regardless of sign) in a time series of estimates.

Employed: Persons aged 15 and over who, during the reference week:

- (a) worked for one hour or more for pay, profit, commission or payment in kind in a job or business, or on a farm (comprising employees, employers and self-employed persons); or
- (b) worked for one hour or more without pay in a family business or on a farm (i.e. unpaid family helpers); or
- (c) were employees who had a job but were not at work and were: on paid leave; on leave without pay for less than four weeks up to the end of the reference week; stood down without pay because of bad weather or plant breakdown at their place of employment for less than four weeks up to the end of the reference week; on strike or locked out; on workers' compensation and expected to be returning to their job; or receiving wages or salary while undertaking full-time study; or
- (d) were employers, self-employed persons or unpaid family helpers who had a job, business or farm, but were not at work.

Full-time workers: Employed persons who usually worked 35 hours or more a week (in all jobs) and others who, although usually working less than 35 hours a week, worked 35 hours or more during the reference week.

Labour force: For any group, persons who were employed or unemployed, as defined.

Labour force status: A classification of the civilian population aged 15 and over into employed, unemployed or not in the labour force, as defined. The definitions conform closely to the international standard definitions

adopted by the International Conferences of Labour Statisticians.

Not in the labour force: Persons who were not in the categories employed or unemployed as defined.

Participation rate: For any group, the labour force expressed as a percentage of the civilian population aged 15 and over in the same group.

Part-time workers: Employed persons who usually worked less than 35 hours a week and who did so during the reference week.

Seasonally adjusted series: A time series of estimates with the estimated effects of normal seasonal variation removed. See paragraph 15 of the Explanatory Notes for more detail.

Trend series: A smoothed seasonally adjusted series of estimates. See paragraphs 16 to 19 of the Explanatory Notes for more detail.

Unemployed: Persons aged 15 and over who were not employed during the reference week, and:

- (a) had actively looked for full-time or part-time work at any time in the four weeks up to the end of the reference week and:
 - (i) were available for work in the reference week, or would have been available except for temporary illness (i.e. lasting for less than four weeks to the end of the reference week); or
 - (ii) were waiting to start a new job within four weeks from the end of the reference week and would have started in the reference week if the job had been available then; or
- (b) were waiting to be called back to a full-time or part-time job from which they had been stood down without pay for less than four weeks up to the end of the reference week (including the whole of the reference week) for reasons other than bad weather or plant breakdown.

Unemployed looking for first full-time job: Unemployed persons looking for full-time work (as defined) who had never worked full time for two weeks or more.

Unemployed looking for full-time work: Unemployed persons who actively looked for full-time work or were to resume a full-time job, from which they had been stood down.

Unemployed looking for part-time work: Unemployed persons who had actively looked for part-time work only, or were to resume a part-time job, from which they had been stood down.

Unemployment rate: For any group, the number of unemployed persons expressed as a percentage of the labour force in the same group.



**LABOUR MARKET
FEATURE
ARTICLES**

Each month the ABS publishes a wide range of information about the Australian labour market in *The Labour Force, Australia* (6203.0).

This publication now contains articles on labour market related topics generally using data derived from the Monthly Labour Force Survey.

Articles published so far are as follows:

- Australia's unemployment rate compared with major OECD countries, November 1992
- The Australian Labour Market – 1992 in summary, December 1992
- Part-time workers, January 1993
- Underemployment, February 1993
- Employment/population ratio, March 1993
- Revisions to trend estimates, April 1993
- Long-term unemployment, to be published in May 1993

For more information about any of these articles or the availability of labour force data and services, please contact Heather Crawford on (06) 252 6525.

Information Inquiries

Sydney	(02) 268 4611
Melbourne	(03) 615 7000
Brisbane	(07) 222 6351
Perth	(09) 323 5140
Adelaide	(08) 237 7100
Hobart	(002) 205 880
Canberra	(06) 252 6007
Darwin	(089) 432 111



For more information ...

The ABS publishes a wide range of statistics and other information on Australia's economic and social conditions. Details of what is available in various publications and other products can be found in the *ABS Catalogue of Publications and Products* available at all ABS Offices (see below for contact details).

Information Consultancy Service

Information tailored to special needs of clients can be obtained from the Information Consultancy Service available at ABS Offices (see Information Inquiries below for contact details).

Electronic Data Services

A wide range of ABS data are available on electronic media. Selections of most frequently requested statistics are available, updated daily, on DISCOVERY (Key *656#). The ABS PC TELESTATS service delivers major economic indicator main features ready to download into personal computers on the day of release. The PC AUSSTATS service enables on-line access to a data base of thousands of up-to-date time series. Selected datasets are also available on diskette or CD-ROM. For more details on electronic data services available, contact Information Services in any of the ABS Offices (see Information Inquiries below for contact details).

Bookshops and Subscriptions

There are over 500 titles of various publications available from ABS bookshops in all ABS Offices (see below Bookshop Sales for contact details). The ABS also provides a subscription service through which nominated publications are provided by mail on a regular basis at no additional cost (telephone Publications Subscription Service toll free on 008 02 0608 Australia wide).

Sales and Inquiries

	Information Inquiries	Bookshop Sales
Regional Offices		
SYDNEY (02)	268 4611	268 4620
MELBOURNE (03)	615 7000	615 7829
BRISBANE (07)	222 6351	222 6350
PERTH (09)	323 5140	323 5307
ADELAIDE (08)	237 7100	237 7582
HOBART (002)	205 800	205 800
CANBERRA (06)	207 0315	207 0315
DARWIN (089)	432 111	432 111
National Office		
ACT (06)	252 6007	252 5979



Information Services, ABS, PO Box 10, Belconnen ACT 2616

Printed in Australia by Alan Law, Commonwealth Government Printer, Canberra
© Commonwealth of Australia 1993

Recommended retail price: \$10.70



2062020005937

ISSN 1031-038X