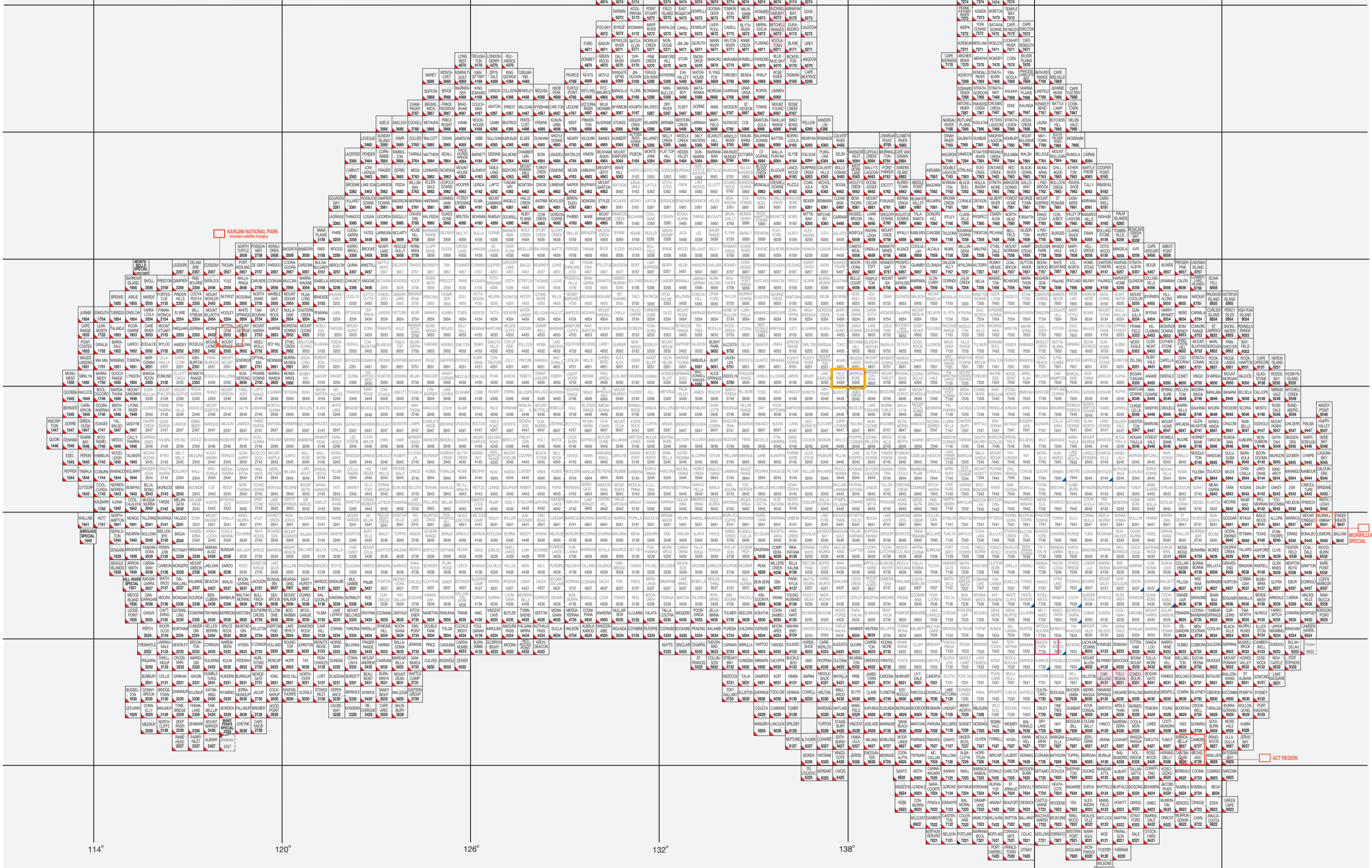


114° 120° 126° 132° 138° 144° 150°

AUSTRALIA


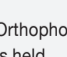
1:100 000




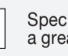
KARLINDI NATIONAL PARK
includes small islands

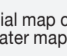
ACT REGION


114° 120° 126° 132° 138° 144° 150°

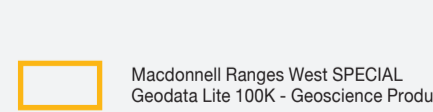
Topographic  Orthophoto  denotes map is held in the collection

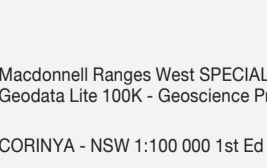
 Unpublished topographic map

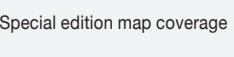
 Published topographic map

 Digital file

 Special map covering a greater map area

 Maccdonnell Ranges West SPECIAL Geodata Lite 100K - Geoscience Product

 CORINYA - NSW 1:100 000 1st Ed

 Special edition map coverage

Available for research purposes only to ANU staff and ANU graduate students.

144° 150°