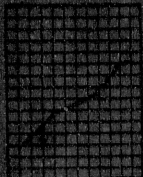


CATALOGUE NUMBER 1303.2

30 SEPTEMBER 1993

VICTORIA



MONTHLY SUMMARY OF STATISTICS, VICTORIA

SEPTEMBER 1993



FURTHER REFERENCES

Table

1. *Australian Demographic Statistics* (3101.0) (quarterly)
2. *Demography, Victoria* (3311.2) (annual)
3. *The Labour Force, Victoria* (8202.2) (quarterly)
4. *The Labour Force, Australia* (8203.0) (monthly)
5. *Commonwealth Department of Social Security*
6. *Job Vacancies and Overtime, Australia* (8354.0) (quarterly)
7. *Industrial Disputes, Australia* (8321.0) (monthly)
8. *Average Weekly Earnings, States and Australia* (8302.0) (quarterly)
9. *Consumer Price Index* (8401.0) (quarterly)
10. *Price Index of Materials Used in Building Other Than House Building, Six State Capital Cities and Darwin* (8407.0) (monthly)
11. *Price Index of Materials Used in House Building, Six State Capital Cities* (8408.0) (monthly)
12. *Manufacturing Production, Australia: Food, Drink and Tobacco* (8358.0) (monthly)
13. *Manufacturing Production, Australia: Clothing and Footwear* (8358.0); *Textiles, Bedding and Floor Coverings* (8360.0) (monthly)
14. *Manufacturing Production, Australia: Building Materials and Fittings, Australia* (8361.0) (monthly)
15. *Manufacturing Production, Australia: Household Appliances and Electrical Equipment* (8357.0); *Plastics, Rubber, Paints, Detergents, and Industrial Chemicals* (8362.0); *Energy Products* (8368.0) (all monthly)

Table

20. *Building Approvals, Victoria* (8731.2) (monthly)
21. *Building Activity, Victoria* (8752.2) (quarterly)
- 22.)
23. *Treasurer of Victoria - Statement of Budget Sector Transactions, Victoria*
- 24.) *State Estimates of Actual and Expected Private New Capital Expenditure* (5646.0) (quarterly)
- 25.)
26. *Housing Finance for Owner Occupation, Australia* (5608.0) (monthly)
27. *Commercial Finance, Australia* (5643.0) (monthly)
28. *Personal Finance, Australia* (5642.0) (monthly)
29. *Lease Finance, Australia* (5644.0) (monthly)
30. *Retail Sales of Goods (Excluding Motor Vehicles, Parts, Petrol, etc.), Australia* (8501.0) (monthly)
31. *Foreign Trade Australia: Merchandise exports* (5432.0); *Merchandise Imports* (5433.0) (monthly)
32. *Overseas Trade Tables MMO3B and MXO3B* (microfiche)
33. *Overseas Trade Tables MMO3A and MXO3B* (microfiche)
34. *Tourist Accommodation, Victoria* (8635.2) (quarterly)
35. *Motor Vehicle Registrations, Victoria* (9303.2) (monthly)

As at June 1993. Publication names and catalogue numbers are subject to revision or change.

MONTHLY SUMMARY OF STATISTICS VICTORIA, SEPTEMBER 1993

Table	CONTENTS	Page
	DEMOGRAPHY	
1	Estimated resident population	2
2	Births, deaths, and marriages	2
	LABOUR	
3	Labour force status of the civilian population aged 15 years and over	3
4	Employed persons by industry	4
5	Unemployment, sickness, and special benefits	5
6	Job vacancies	5
7	Industrial disputes causing stoppage of work	6
	WAGES AND PRICES	
8	Average weekly earnings, all employees	6
9	Consumer Price Index	7
10	Price Index of Materials Used in Building, Melbourne	7
	PRODUCTION	
11	Livestock slaughtering	8
12	Meat production	8
13	Dairy products	9
14	Food production	9
15	Other processed food and drink production	10
16	Wool and yarns production	10
17	Textile and footwear production	11
18	Building materials production	11
19	Plastics, energy, and electrical appliances	12
	BUILDING	
20	Building approvals	13
21	New houses and other residential buildings: number of dwelling units	14
22	Value of building	14
	FINANCE	
23	Statement of Budget Sector Transactions	15
24	Actual private new capital expenditure by industry group and type of asset	16
25	Expected and subsequently reported actual private new capital expenditure by industry group and type of asset	16
26	Housing finance for owner occupation, secured loans to individuals by type of lender	17
27	Commercial finance, commitments	17
28	Personal finance commitments by type of lender and type of credit	18
29	Lease finance, value of goods under new lease finance commitments	18
	TRADE	
30	Retail sales by industry (excl. motor vehicles, parts, petrol, etc.)	19
31	Value of overseas trade, Victoria and Australia	19
32	Exports and imports by sections of the Australian Export and Import Commodity Classifications	20
33	Overseas trade, major trading partners	20
	TOURISM AND TRANSPORT	
34	Tourist accommodation	21
35	Registrations of new motor vehicles	21
	NOTES	22

INQUIRIES

For further information about statistics in this publication and other ABS statistics and services please contact Information Services on Melbourne (03) 815 7000 or any ABS State office.

DEMOGRAPHY

TABLE 1. ESTIMATED RESIDENT POPULATION, VICTORIA (a)
(*000)

Period	At end of period			Increase during period		Mean estimated resident population for year ended		Melbourne Statistical Division at 30 June
	Males	Females	Persons	Natural	Total	30 June	31 Dec.	
1989-90 r	2,172.6	2,206.0	4,378.6	33.7	58.4	4,349.0	4,377.4	3,125.8
1990-91 r	2,192.1	2,228.3	4,420.4	34.9	41.8	4,401.6	4,420.7	3,156.7
1991-92 p	2,205.0	2,243.8	4,448.8	33.8	28.4	4,436.3	4,447.9	n.a.
1989 -								
June qr r	2,144.3	2,175.9	4,320.2	7.7	10.2			
September qr r	2,150.8	2,182.8	4,333.5	7.1	13.3			
December qr r	2,157.6	2,190.6	4,348.2	7.8	14.7			
1990 -								
March qr r	2,165.7	2,198.8	4,364.5	9.5	16.3			
June qr r	2,172.6	2,208.0	4,378.6	9.1	14.1			
September qr r	2,178.7	2,212.5	4,391.2	8.5	12.6			
December qr r	2,183.0	2,217.7	4,400.7	8.8	9.5			
1991 -								
March qr r	2,189.0	2,224.4	4,413.4	8.9	12.7			
June qr r	2,192.1	2,228.3	4,420.4	8.3	7.0			
September qr r	2,196.4	2,233.2	4,429.6	8.2	9.2			
December qr r	2,198.6	2,236.6	4,435.2	8.4	5.6			
1992 -								
March qr r	2,203.1	2,241.3	4,444.4	9.2	9.2			
June qr r	2,205.0	2,243.8	4,448.8	8.0	4.4			
September qr r	2,206.5	2,245.8	4,452.2	8.2	3.4			
December qr p	2,207.9	2,248.1	4,456.0	8.6	3.8			

(a) Figures have been revised to incorporate final 1991 Census results.

TABLE 2. BIRTHS, DEATHS, AND MARRIAGES, VICTORIA

Period	Number of registrations				Annual rate per 1,000 of mean estimated resident population			Infant deaths per 1,000 live births
	Births	Deaths	Infant deaths	Marriages	Births	Deaths	Marriages	
1989-90	65,995	32,055	456	30,456	15.17	7.37	7.00	6.91
1990-91 r	66,269	31,091	498	29,135	15.05	7.06	6.63	7.51
1991-92 p	65,572	31,446	389	28,567	14.71	7.05	6.41	5.93
1989 -								
March qr	16,383	7,514	100	9,819
June qr	15,942	8,111	114	7,034
September qr	16,229	9,031	62	4,986
December qr	15,651	7,701	155	8,785
Year - 1989	64,185	32,357	431	30,624	14.85	7.49	7.08	6.71
1990 -								
March qr	17,239	7,572	121	9,533
June qr	16,876	7,751	118	7,152
September qr	r16,517	r7,972	r150	4,399
December qr	r16,529	r7,687	r123	9,036
Year - 1990	67,166	30,988	523	30,120	15.34	7.08	6.88	7.79
1991 -								
March qr	16,597	7,392	129	9,091
June qr	16,626	8,040	96	6,609
September qr	16,604	8,306	119	4,336
December qr	15,897	7,420	95	8,499
Year - 1991	65,724	31,158	439	28,535	14.87	7.05	6.46	6.88
1992 -								
March qr p	16,901	7,625	96	9,301
June qr p	16,170	8,095	79	6,431
September qr p	16,715	8,418	99	4,179
December qr p	16,378	7,777	97	8,518
Year - 1992 p	66,164	31,915	371	28,429	14.88	7.18	6.39	5.61

LABOUR

TABLE 3. LABOUR FORCE STATUS OF THE CIVILIAN POPULATION AGED 15 YEARS AND OVER, VICTORIA

Month	Employed		Unemployed looking for work			Labour force ('000)	Not in labour force ('000)	Civilian population 15 years and over ('000)	Unemployment rate (%)	Participation rate (%)
	Full-time ('000)	Total ('000)	Full-time ('000)	Part-time ('000)	Total ('000)					
MALES										
1992 -										
June	1,009.4	1,137.1	138.9	9.9	148.9	1,286.0	436.5	1,722.5	11.6	74.7
July	1,014.8	1,135.2	143.7	12.0	155.6	1,290.8	433.0	1,723.8	12.1	74.9
August	997.5	1,125.3	137.8	12.6	150.4	1,275.6	449.5	1,725.1	11.8	73.9
September	1,005.8	1,134.2	137.3	12.4	149.6	1,283.8	442.7	1,726.5	11.7	74.4
October	1,004.9	1,129.5	133.3	16.7	150.0	1,279.5	447.9	1,727.4	11.7	74.1
November	1,001.3	1,115.3	144.6	13.4	158.0	1,273.2	455.0	1,728.2	12.4	73.7
December	1,021.0	1,135.9	139.4	17.9	157.4	1,293.2	435.9	1,729.1	12.2	74.8
1993 -										
January	999.7	1,110.6	160.2	12.2	172.4	1,283.0	447.3	1,730.3	13.4	74.1
February	1,005.8	1,108.9	156.6	14.4	171.0	1,280.0	451.5	1,731.5	13.4	73.9
March	1,010.8	1,129.2	144.5	18.6	163.1	1,292.4	440.3	1,732.7	12.6	74.6
April	1,006.7	1,118.9	139.0	17.1	156.1	1,275.0	458.2	1,733.2	12.2	73.6
May	1,003.3	1,114.8	150.5	18.4	168.9	1,283.7	450.0	1,733.7	13.2	74.0
June	1,012.3	1,122.4	144.5	12.9	157.4	1,279.8	454.4	1,734.2	12.3	73.8
July	1,011.0	1,126.4	148.2	10.8	158.9	1,285.3	449.5	1,734.8	12.4	74.1
August	999.3	1,110.1	153.5	11.9	165.3	1,275.5	459.9	1,735.4	13.0	73.5
FEMALES										
1992 -										
June	468.7	824.4	79.4	24.2	103.6	928.0	858.2	1,786.2	11.2	52.0
July	476.9	836.5	75.5	21.2	96.7	933.2	854.9	1,788.1	10.4	52.2
August	474.9	828.9	86.3	23.4	89.7	918.6	873.4	1,790.0	9.8	51.2
September	487.2	830.5	66.1	28.6	94.8	925.3	866.5	1,791.8	10.2	51.6
October	483.2	825.8	65.7	26.3	92.0	917.8	875.1	1,792.9	10.0	51.2
November	488.3	838.4	65.4	25.0	90.4	928.8	865.3	1,794.1	9.7	51.8
December	496.2	839.3	80.3	27.5	107.8	947.1	848.1	1,795.2	11.4	52.8
1993 -										
January	474.3	801.2	74.9	23.3	98.2	899.4	897.1	1,796.5	10.9	50.1
February	473.5	809.4	79.5	32.8	112.3	921.7	876.1	1,797.8	12.2	51.3
March	489.3	834.3	78.4	28.4	106.7	941.0	858.1	1,799.1	11.3	52.3
April	484.0	821.2	73.4	22.8	96.2	917.4	882.4	1,799.8	10.5	51.0
May	480.7	821.3	78.0	27.9	105.9	927.2	873.4	1,800.6	11.4	51.5
June	477.7	818.4	78.8	29.2	108.0	926.4	874.9	1,801.3	11.7	51.4
July	482.0	820.0	77.7	26.1	103.8	923.8	878.4	1,802.2	11.2	51.3
August	475.7	820.8	76.3	27.3	103.6	924.4	878.6	1,803.0	11.2	51.3
PERSONS										
1992 -										
June	1,478.1	1,961.5	218.3	34.2	252.5	2,214.0	1,294.8	3,508.8	11.4	63.1
July	1,491.6	1,971.7	219.2	33.1	252.3	2,224.0	1,287.9	3,511.9	11.3	63.3
August	1,472.4	1,952.2	204.1	36.0	240.0	2,192.2	1,322.9	3,515.1	10.9	62.4
September	1,492.1	1,964.3	203.3	40.9	244.3	2,208.6	1,309.7	3,518.3	11.1	62.8
October	1,488.1	1,955.3	199.0	43.0	242.0	2,197.3	1,323.1	3,520.4	11.0	62.4
November	1,489.6	1,953.7	210.0	38.3	248.4	2,202.0	1,320.3	3,522.3	11.3	62.5
December	1,517.2	1,975.2	219.7	45.4	265.1	2,240.3	1,284.0	3,524.3	11.8	63.6
1993 -										
January	1,474.0	1,911.8	235.1	35.5	270.6	2,182.4	1,344.4	3,526.8	12.4	61.9
February	1,479.2	1,918.3	236.1	47.2	283.3	2,201.6	1,327.7	3,529.3	12.9	62.4
March	1,500.1	1,963.5	222.8	47.0	269.6	2,233.4	1,298.4	3,531.8	12.1	63.2
April	1,490.7	1,940.1	212.4	39.9	252.4	2,192.4	1,340.6	3,533.0	11.5	62.1
May	1,484.0	1,936.1	228.5	46.3	274.8	2,210.9	1,323.4	3,534.3	12.4	62.6
June	1,490.0	1,940.8	223.3	42.1	265.4	2,206.3	1,329.3	3,535.6	12.0	62.4
July	1,493.0	1,946.3	225.9	36.8	262.7	2,209.0	1,328.0	3,537.0	11.9	62.5
August	1,475.0	1,930.9	229.8	39.1	269.0	2,199.9	1,338.6	3,538.4	12.2	62.2

TABLE 4. EMPLOYED PERSONS BY INDUSTRY, VICTORIA

Industry division or subdivision	('000)					
	May 1992	Aug. 1992	Nov. 1992	Feb. 1992	May 1993	Aug. 1993
MALES						
Agriculture and services to agriculture	65.6	65.3	57.6	63.9	57.1	61.5
Forestry, fishing, and hunting	*2.3	*1.9	*1.7	*1.4	*1.6	*3.2
Mining	4.5	6.1	5.0	4.6	*3.8	*2.9
Manufacturing -	252.5	253.9	250.8	243.2	242.4	245.4
Food, beverages, and tobacco	39.4	36.9	35.4	31.2	32.9	33.1
Metal products	36.4	40.4	31.9	35.1	35.7	38.5
Other manufacturing	176.7	176.5	183.6	176.9	173.8	173.9
Construction	107.8	105.0	102.2	104.2	101.9	97.8
Wholesale and retail trade	223.7	221.8	231.9	230.3	240.8	246.9
Transport and storage	75.7	74.8	68.0	73.6	71.0	61.9
Finance, property, and business services	107.6	116.7	124.0	113.8	130.3	124.0
Community services	122.5	120.7	120.3	116.0	112.3	105.5
Recreational, personal, and other services	64.2	64.2	56.5	63.7	63.5	65.0
Other industries	98.2	94.9	97.3	94.2	90.1	96.0
Total	1,124.6	1,125.3	1,125.3	1,108.9	1,114.8	1,110.1
FEMALES						
Agriculture and services to agriculture	30.9	32.0	31.2	27.9	23.3	23.9
Forestry, fishing, and hunting	*0.3	*0.7	*0.0	*0.5	*0.8	*0.5
Mining	*1.0	*1.0	*0.3	*1.1	*0.3	*0.5
Manufacturing -	1106.8	102.7	111.6	104.9	106.4	94.7
Food, beverages, and tobacco	17.2	17.5	21.3	20.0	18.4	17.5
Metal products	7.1	7.3	6.0	6.4	6.2	6.4
Other manufacturing	82.4	78.0	84.3	78.5	81.8	70.8
Construction	13.8	13.8	17.0	17.6	15.6	14.3
Wholesale and retail trade	175.0	176.8	185.4	179.7	185.1	183.9
Transport and storage	19.5	14.6	16.6	14.3	16.0	17.0
Finance, property, and business services	109.4	109.2	102.6	104.0	105.0	102.5
Community services	237.4	248.1	240.6	227.8	242.9	246.8
Recreational, personal, and other services	71.6	76.9	76.5	78.1	71.6	73.1
Other industries	51.9	51.2	56.6	53.4	54.4	63.6
Total	817.5	826.9	838.4	809.4	821.3	820.8
PERSONS						
Agriculture and services to agriculture	96.4	97.3	88.8	91.9	80.4	85.4
Forestry, fishing, and hunting	*2.6	*2.6	*1.7	*1.9	*2.4	*3.8
Mining	5.5	7.1	5.3	5.7	*4.1	*3.4
Manufacturing -	359.3	356.6	362.3	348.1	348.8	340.1
Food, beverages, and tobacco	56.6	54.4	56.7	51.2	51.3	50.6
Metal products	43.5	47.7	37.8	41.5	41.9	44.9
Other manufacturing	259.1	254.5	267.8	255.4	255.6	244.6
Construction	121.6	118.8	119.2	121.8	117.4	112.1
Wholesale and retail trade	398.7	398.6	417.3	410.0	425.9	430.8
Transport and storage	95.2	89.4	84.6	87.9	86.9	78.9
Finance, property, and business services	218.9	225.8	228.6	217.8	235.2	226.5
Community services	360.0	368.8	360.9	343.8	352.2	352.2
Recreational, personal, and other services	135.9	141.0	133.0	141.9	135.0	138.1
Other industries	150.1	146.2	153.8	147.6	144.6	159.6
Total	1,942.1	1,952.2	1,953.7	1,918.3	1,936.1	1,930.9

TABLE 5. UNEMPLOYMENT, SICKNESS, AND SPECIAL BENEFITS, VICTORIA (a) (b)

As at -	Number of benefits			Percentage of Australian Total
	Unemployment	Sickness and special	Total	
	Persons	Persons	Persons	
1991 -				
April	147,026	23,704	170,730	23.72
May	158,069	23,648	181,717	24.22
June	167,968	23,300	191,268	24.59
July	175,726	22,739	198,465	24.81
August	179,590	22,140	201,730	25.05
September	183,841	21,084	204,925	25.28
October	185,892	20,097	205,989	25.46
November	189,214	19,217	208,431	25.58
December	194,447	18,468	212,915	25.55
1992 -				
January	200,827	19,065	219,892	25.42
February	210,664	20,350	231,014	25.49
March	211,429	19,962	231,391	25.57
April	214,122	19,361	233,483	25.66
May	219,234	18,719	237,953	25.90
June	224,177	18,557	242,734	26.08
July	225,784	18,761	244,545	26.12
August (b)	n.a.	n.a.	n.a.	n.a.

(a) Monthly average. (b) As of August 1992 this information is no longer collected by the ABS. It is available directly from the Department of Social Security.

TABLE 6. JOB VACANCIES, VICTORIA

Month	Vacancies all persons ('000)	Industry ('000)		Sector ('000)		Job vacancy rate (per cent)
		Manu- facturing	Other	Public	Private	
1991 -						
May	3.8	0.5	3.3	1.3	*2.5	0.2
August	4.1	1.0	3.1	1.1	*3.0	0.3
November	5.2	0.5	4.8	0.9	*4.3	0.3
1992 -						
February	6.7	0.8	5.8	1.2	5.4	0.4
May	5.8	*0.5	5.3	1.8	*3.9	0.4
August	6.5	0.7	5.8	1.2	5.3	0.4
November	5.8	0.7	5.1	1.0	4.8	0.4
1993 -						
February	7.3	*0.7	6.6	1.0	6.3	0.5
May	5.4	*0.6	4.8	1.2	*4.2	0.3

*Subject to sampling variability too high for most practical purposes.

TABLE 7. INDUSTRIAL DISPUTES CAUSING STOPPAGE OF WORK, VICTORIA

Period	Number of disputes		Workers involved ('000)		Working days lost ('000)				
	Beginning in period		Beginning in period		Manu- facturing	Con- struction	Community services	Other industries	Total
	Total	Total	Total	Total					
1992 -									
January	6	6	0.6	0.6	0.2	-	-	0.5	0.7
February	16	17	8.6	8.6	6.1	2.0	-	1.8	9.9
March	14	19	8.9	10.6	3.1	0.7	1.1	4.0	8.9
April	7	11	2.0	4.1	-	0.2	-	9.0	9.2
May	9	12	4.7	5.1	0.3	0.2	1.9	2.7	5.1
June	9	10	4.4	4.5	0.2	-	-	2.1	2.3
July	8	9	1.1	1.2	-	-	0.1	-	0.0
August	13	13	1.4	1.4	0.7	-	-	1.3	2.0
September	15	16	3.8	4.0	3.9	-	0.2	6.5	10.6
October	4	5	0.6	0.6	-	0.1	2.0	0.7	2.8
November	5	5	535.2	535.2	136.8	21.1	172.3	172.2	502.4
December	8	10	27.5	27.6	4.5	-	6.1	21.0	31.6
1993 -									
January	5	5	0.4	0.4	-	0.1	-	0.8	0.9
February	9	9	11.4	11.4	0.9	-	8.4	r0.7	10.0
March	r11	r12	90.8	90.8	50.1	0.4	32.1	r5.7	r88.3
April	6	9	1.2	2.6	0.6	-	0.5	0.7	1.8
May	12	15	4.0	23.1	3.6	-	11.0	8.8	23.4

WAGES AND PRICES

TABLE 8. AVERAGE WEEKLY EARNINGS, ALL EMPLOYEES, VICTORIA
(\$)

Reference period - pay period ending on or before	Males			Females			Persons		
	Full-time adults		All males	Full-time adults		All females	Full-time adults		All employees
	Ordinary time earnings	Total earnings	Total earnings	Ordinary time earnings	Total earnings	Total earnings	Ordinary time earnings	Total earnings	Total earnings
1992 -									
21 February	620.30	657.30	601.70	524.10	537.70	408.80	584.90	613.30	509.40
15 May	618.80	653.70	595.40	519.20	530.90	403.10	582.80	609.30	504.40
21 August	625.90	662.60	594.50	522.90	534.90	392.10	588.80	616.70	497.70
20 November	624.40	669.90	605.50	522.50	535.00	396.00	587.30	620.80	504.80
1993 -									
19 February	631.10	675.10	616.90	531.40	545.00	413.60	595.10	628.10	520.80
21 May	633.90	679.90	619.30	526.30	540.00	407.90	595.50	629.90	519.80

TABLE 9. CONSUMER PRICE INDEX
(Base of each group: year 1989-90 = 100.0)

Period	Melbourne							Eight capital cities	
	Food	Clothing	Housing	Household equipment and operation	Transportation	Tobacco and alcohol	Health and personal care education	Recreation and	All groups (weighted average)
1989-90	100.0	100.0	100.0	100.0	100.0	100.0	100.0	100.0	100.0
1990-91	102.5	104.6	104.2	105.7	107.1	111.3	111.6	105.9	105.8
1991-92	104.9	106.8	98.9	108.3	109.8	116.8	126.3	108.6	108.1
1990 -									
December qr	101.7	104.2	105.1	105.6	112.2	111.5	109.4	107.4	106.6
1991 -									
March qr	103.0	104.7	103.8	106.0	106.4	112.8	114.7	106.4	106.1
June qr	103.7	106.5	103.9	106.3	106.2	115.7	118.1	108.4	106.8
September qr	104.0	106.3	101.5	108.0	108.6	116.1	120.6	107.9	107.6
December qr	104.6	107.0	100.6	108.3	110.3	117.1	125.2	108.8	108.4
1992 -									
March qr	104.9	106.4	97.8	107.9	110.1	116.9	131.7	108.7	108.3
June qr	106.0	107.5	95.5	108.9	110.1	117.2	127.5	108.9	108.2
September qr	105.5	106.8	93.3	107.8	112.0	118.0	127.2	109.2	107.9
December	105.5	108.3	92.3	108.6	112.0	118.8	128.5	110.2	108.2
1993 -									
March	107.3	107.7	92.4	108.2	113.1	126.4	131.5	112.0	109.5
June	107.0	108.4	94.5	108.7	113.7	127.7	132.1	111.9	110.1

TABLE 10. PRICE INDEX OF MATERIALS USED IN BUILDING, MELBOURNE

Group	1993						Six State capital cities (weighted average)
	1990-91	1991-92	1992-93 p	May p	June p	July p	
House building (Base year: 1985-86 = 100.0) - All groups	138.1	137.3	141.1	144.7	145.5	146.7	149.9
Other than house building (Base year: 1979-80 = 100.0) -							
Structural timber	226.2	219.8	233.0	252.0	259.9	261.0	274.0
Clay bricks	274.8	283.0	287.3	287.0	287.3	287.3	282.3
Ready mixed concrete	197.3	172.7	198.8	215.5	218.4	222.6	223.3
Precast concrete products	212.0	210.2	203.5	203.1	203.8	195.8	232.0
Galvanised steel decking, etc.	202.8	209.6	212.5	216.7	215.0	202.8	239.4
Structural steel	207.9	196.3	192.1	190.1	190.6	191.5	226.0
Reinforcing steel bar, mesh, etc.	223.5	204.9	207.9	212.7	215.8	214.2	237.4
Aluminium windows	205.1	198.7	197.8	198.6	198.6	198.6	221.6
Steel windows, doors, louvres, etc.	249.5	255.6	253.0	252.6	252.6	253.6	238.3
Builders' hardware	259.4	277.4	288.9	294.4	294.4	295.4	289.6
Sand, aggregate, and filling	244.5	252.0	241.2	247.4	247.4	247.4	293.7
Carpet	235.6	231.7	227.9	227.5	227.5	227.5	226.0
Paint	312.9	336.1	335.2	338.9	340.4	348.4	304.5
Non-ferrous pipes	233.1	209.4	213.1	205.1	197.8	201.4	217.7
All groups excluding electrical materials and mechanical services	227.9	222.7	226.1	229.5	230.1	230.5	240.2
All electrical materials	294.7	303.9	299.0	295.1	294.4	294.5	287.1
All mechanical services	254.9	259.8	259.4	260.2	260.3	260.4	282.4
All plumbing materials	247.0	245.0	244.8	244.6	242.8	242.3	261.6
All groups	238.0	235.6	237.8	240.1	240.5	240.9	247.8

PRODUCTION

TABLE 11. LIVESTOCK SLAUGHTERINGS, VICTORIA

Period	Cattle	Calves	Sheep	Lambs	Pigs	Chickens
	'000	'000	'000	'000	'000	'000
1989-90	1,410.0	585.1	3,326.0	6,199.9	971.3	88,942.6
1990-91	1,613.4	615.5	4,054.4	6,246.3	1,012.7	72,165.2
1991-92	1,448.8	497.7	3,637.3	6,318.9	1,095.2	73,832.2
1992 -						
March	127.3	10.1	378.3	544.8	90.6	5,810.3
April	125.1	25.4	323.6	520.9	94.0	7,058.1
May	126.3	36.3	305.3	486.4	92.8	6,132.4
June	111.6	50.7	254.7	489.1	97.9	5,820.2
July r	122.6	88.2	296.8	543.1	110.6	6,708.6
August r	95.6	155.5	206.7	509.6	103.5	5,707.0
September r	110.5	97.3	215.1	617.4	102.9	6,071.6
October	128.1	60.2	364.1	572.7	101.1	7,320.0
November	127.7	17.7	414.6	585.9	95.4	6,300.4
December	140.3	8.1	381.4	535.5	113.1	6,454.5
1993 -						
January	107.2	10.1	334.1	455.6	83.5	7,400.9
February	115.4	9.1	313.8	421.8	89.9	5,926.3
March	134.2	16.5	396.3	503.7	107.5	6,309.3
April	113.6	28.2	375.3	468.9	105.9	7,357.7
May	114.6	45.1	399.0	474.3	102.7	6,445.3
June	101.3	65.2	359.1	462.6	103.6	6,613.2
July r	106.1	79.7	338.3	428.0	106.1	7,289.1
August	96.3	149.5	231.3	370.1	103.6	6,290.3

TABLE 12. MEAT PRODUCTION, VICTORIA

Period	Meat (carcass weight)					Dressed weight of poultry
	Beef	Veal	Mutton	Lamb	Pigmeat	
	tonnes	tonnes	tonnes	tonnes	tonnes	
1989-90	317,564	12,254	73,237	113,143	66,055	108,108
1990-91	337,337	13,900	86,614	112,859	67,993	107,562
1991-92	302,385	11,907	75,058	111,452	74,093	113,482
1992 -						
March	29,028	410	7,786	9,729	6,144	8,773
April	26,014	706	6,596	9,387	6,139	10,484
May	25,831	919	6,319	8,803	5,974	9,186
June	23,117	1,114	5,349	8,779	6,351	8,866
July	25,222	1,910	6,174	9,452	7,306	10,077
August	19,427	3,191	4,116	9,052	6,752	8,478
September	22,570	2,641	4,455	10,929	6,963	8,790
October	27,295	1,387	7,757	10,183	6,581	10,926
November	27,971	517	8,510	10,171	6,274	9,840
December	30,287	386	7,994	9,852	7,330	10,040
1993 -						
January	23,188	547	9,578	9,392	5,418	11,200
February	25,290	564	6,587	7,889	5,793	8,907
March	29,583	722	8,353	9,047	7,063	9,639
April	25,110	1,295	8,146	8,357	6,878	10,774
May	25,700	1,773	8,715	8,589	6,642	9,780
June	22,322	2,137	7,215	8,074	6,822	11,515
July r	22,665	1,752	7,202	7,713	7,065	12,280
August	18,935	2,993	5,290	6,413	6,826	9,797

TABLE 13. DAIRY PRODUCTS, VICTORIA

Period	Butter			Cheese		Ice cream '000 litres	Yoghurt '000 tonnes
	Whole milk (a)	Original (a)	Seasonally adjusted (b)	Original (a)	Seasonally adjusted (b)		
	m litres	'000 tonnes	'000 tonnes	'000 tonnes	'000 tonnes		
1990-91	3,908	92.9	..	104.5	..	64,734	27,950
1991-92	4,118	94.3	..	123.0	..	57,352	27,746
1992-93	4,456	106.9	..	127.7	..	49,905	28,698
1992 -							
May	182	4.3	8.2	5.8	11.1	3,827	2,246
June	158	4.0	8.6	4.1	9.3	3,519	2,449
July	188	3.0	8.0	5.4	10.3	2,845	2,207
August	311	5.1	8.0	8.1	10.1	3,209	2,212
September	469	10.5	8.3	13.9	10.6	3,911	2,489
October	590	14.4	8.6	16.5	11.9	4,458	3,020
November	583	16.0	9.5	15.1	10.3	4,313	2,472
December	536	15.3	10.6	13.4	10.0	5,067	2,147
1993 -							
January	466	11.5	9.9	14.3	12.2	5,108	2,490
February	364	8.9	9.5	10.6	9.7	5,641	2,666
March	337	8.4	9.1	10.8	10.5	5,328	2,569
April	252	6.0	9.1	9.3	11.7	3,399	1,962
May	199	4.1	8.0	6.3	11.2	2,931	2,411
June	161	3.7	8.3	4.0	9.5	3,694	2,055
July	n.y.a.	n.y.a.	n.y.a.	n.y.a.	n.y.a.	3,420	2,153

(a) Source: Australian Dairy Corporation

(b) Care should be taken in interpreting month-to-month movements of the seasonally-adjusted series in 1991 due to what appears to be a change in the nature of the original data.

TABLE 14. FOOD PRODUCTION, VICTORIA

Period	Wheat flour, (other than self-raising) tonnes	Confectionery			Preserved vegetables (c) tonnes
		Biscuits (a) tonnes	Chocolate (b)		
			tonnes	tonnes	
1990-91	270,684	r50,857	r54,928	39,261	51,441
1991-92	261,505	r42,326	r54,477	39,400	56,106
1992-93	271,883	42,223	59,081	40,042	r53,361
1992 -					
May	20,151	r3,759	r4,412	2,975	3,287
June	20,438	r3,477	r4,679	3,459	2,814
July	21,619	r3,992	r5,642	3,575	4,099
August	21,797	r3,842	r5,424	4,220	3,878
September	24,431	r3,553	r5,508	3,882	2,448
October	24,338	r3,746	r5,803	3,691	2,125
November	21,178	r3,866	r5,868	3,864	2,501
December	21,640	r3,514	r5,512	3,516	2,765
1993 -					
January	19,610	r2,216	r2,774	1,960	2,637
February	22,015	r3,080	r4,493	2,797	6,378
March	23,281	r3,761	r4,918	3,446	11,256
April	23,124	r3,299	r3,941	2,743	9,591
May	22,642	r3,570	r4,749	3,058	3,726
June	26,208	r3,784	r4,850	3,289	r1,957
July	21,465	3,475	4,988	3,445	3,588

(a) Includes waffles, wafers and gingerbread. Excludes dog biscuits.

(b) Excludes biscuits coated with chocolate or other confectionery.

(c) Canned tomatoes are included with preserved vegetables.

TABLE 15. OTHER PROCESSED FOOD AND DRINK PRODUCTION, VICTORIA

Period	Canned meat (a)	Bacon and ham (other than canned)	Natural fruit juices	Aerated waters (b)
	tonnes	tonnes	'000 litres	'000 litres
1990-91	n.p.	21,484	42,277	434,582
1991-92	6,521	22,640	38,792	385,807
1992-93	6,127	25,845	56,359	r380,554
1992 -				
May	498	1,956	1,351	23,405
June	n.p.	1,899	2,660	20,853
July	451	1,997	3,472	24,315
August	520	2,120	3,910	27,352
September	335	2,127	4,369	31,091
October	486	2,463	5,786	35,585
November	557	2,194	3,454	33,380
December	655	2,310	6,807	39,587
1993 -				
January	286	1,838	7,004	37,766
February	478	1,863	7,201	38,422
March	706	2,295	5,455	37,652
April	570	2,160	4,293	26,986
May	489	2,308	2,328	28,575
June	592	2,170	2,278	r20,862
July	566	2,238	4,735	23,163

(a) Canned meat excludes other canned meat (eg canned frankfurts) and includes canned pork and beans from July 1989.

(b) Bulk pre-mix and post-mix concentrates are included with aerated waters.

TABLE 16. WOOL AND YARNS PRODUCTION, VICTORIA

Period	Wool	Scoured and carbonised wool (a)	Yarns	
	receivels	tonnes	Cotton	Wool
	tonnes	tonnes	tonnes	tonnes
1990-91	243,379	50,537	10,053	13,845
1991-92	208,990	66,165	11,050	14,149
1992-93	r203,615	67,397	n.p.	13,915
1992 -				
May	7,943	6,657	1,057	1,224
June	6,857	5,574	1,210	1,296
July	p10,734	4,976	1,037	1,255
August	p19,807	3,608	933	1,168
September	p24,676	5,833	1,002	1,303
October	p31,776	5,736	1,121	1,279
November	p30,787	6,304	950	1,221
December	p24,254	5,719	924	1,036
1993 -				
January	p13,419	5,751	457	658
February	p11,470	6,313	1,006	1,173
March	p11,964	6,372	1,108	1,236
April	p10,025	5,181	1,277	1,183
May	6,662	6,065	1,079	1,174
June	r6,239	5,540	n.p.	1,228
July	p8,195	4,703	n.p.	1,290

(a) Available monthly from July 1989

TABLE 17. TEXTILE AND FOOTWEAR PRODUCTION, VICTORIA

Period	Textiles						
	Broadwoven fabric			Man made fibre	Footwear (b)		
	Cotton	Woolen (a)	Men's (c)		Women's (c)	Children's (d)	
	'000 sq.m	'000 sq.m	'000 sq.m	'000 pairs	'000 pairs	'000 pairs	
1990-91	15,212	4,893	71,806	2,697	7,011	1,375	
1991-92	16,599	5,076	76,240	2,332	5,202	921	
1992-93	n.p.	5,053	73,835	r2,142	4,928	r529	
1992 -							
May	1,747	443	6,799	233	449	52	
June	1,430	396	7,270	203	357	54	
July	1,548	441	5,748	219	471	57	
August	1,552	370	5,522	207	424	57	
September	1,458	438	6,508	195	426	56	
October	1,983	404	6,917	211	422	62	
November	1,414	496	6,066	174	399	58	
December	1,352	421	6,631	151	380	48	
1993 -							
January	710	281	2,921	74	210	21	
February	1,614	427	6,228	148	411	41	
March	1,736	500	6,816	207	516	50	
April	1,958	412	5,973	175	442	34	
May	1,716	370	6,917	r209	450	r27	
June	n.p.	401	7,389	172	378	18	
July	n.p.	447	6,666	n.y.a.	n.y.a.	n.y.a.	

(a) Previously excluded worsted fabric.

(b) Excludes thongs, waterproof and sports footwear.

(c) Refers to size 2 second series.

(d) Refers to sizes below 2 second series.

TABLE 18. BUILDING MATERIALS PRODUCTION, VICTORIA

Period	Paints						
	Terracotta and concrete		Concrete		Paints		
	Clay bricks	roofing tiles	Ready mixed	Masonry (a)	Architectural and decorative	Industrial	Floor coverings
	million	'000 sq m	'000 cu m	tonnes	'000 litres	'000 litres	'000 sq m
1990-91	375	4,296	2,984	290,184	12,803	29,524	34,699
1991-92	284	3,666	2,507	222,876	17,443	30,809	33,571
1992-93	304	n.p.	2,927	234,629	18,321	32,211	34,747
1992 -							
May	25	341	239	17,330	1,402	3,048	2,764
June	29	350	232	15,950	1,374	2,433	2,940
July	26	369	272	18,474	1,583	3,075	2,731
August	24	338	219	19,691	1,454	2,524	3,264
September	28	395	189	18,544	1,513	2,435	3,122
October	25	340	254	20,109	1,657	3,032	2,905
November	25	328	230	20,379	1,549	2,402	3,199
December	25	357	238	20,668	1,619	2,473	2,691
1993 -							
January	11	150	186	12,645	1,231	1,948	1,753
February	24	278	234	20,748	1,551	2,639	2,896
March	30	373	293	21,370	1,646	3,050	3,213
April	28	352	266	20,738	1,555	3,034	2,580
May	27	407	289	20,812	1,324	2,820	3,292
June	32	n.p.	259	20,453	1,639	2,779	2,902
July	27	n.p.	259	19,450	1,067	3,010	2,919

(a) Concrete masonry includes concrete bricks, blocks and pavers. Comparable data is not available prior to July 1990.

TABLE 19. PLASTICS, ENERGY AND ELECTRICAL APPLIANCES, VICTORIA

Period	Plastics in Primary Form		Energy		Electrical Appliances		
	Mixed or compounded (e)	Not mixed or compounded (a)	Electricity generated	Gas available (b)	Domestic air-conditioning machines (c)	Electric space heating apparatus (d)	Electric fans
	tonnes	tonnes	million KWh	million Mj	number	number	number
1990-91	45,216	602,092	38,288	194,737	8,484	348,335	551,054
1991-92	42,436	626,031	38,305	202,699	8,948	227,723	595,382
1992-93	45,076	663,844	37,576	207,131	10,595	177,463	746,216
1992 -							
May	3,771	47,986	3,439	19,915	689	37,676	63,622
June	3,171	52,669	3,150	26,648	730	14,168	62,610
July	4,395	55,293	3,476	26,562	758	8,316	83,998
August	3,587	55,739	3,393	28,479	724	3,232	156,786
September	3,713	59,927	3,066	24,180	398	838	64,216
October	4,471	57,537	3,128	17,112	912	n.p.	77,198
November	3,920	57,111	3,366	13,320	692	n.p.	61,157
December	3,748	52,060	3,205	11,274	1,107	14,543	67,573
1993 -							
January	2,134	47,343	3,009	9,697	946	13,767	42,225
February	3,783	51,546	2,787	10,421	1,294	14,690	49,273
March	3,682	61,680	2,991	13,017	1,034	24,465	60,730
April	3,608	55,030	2,923	13,129	948	36,101	67,720
May	3,879	52,881	3,091	19,410	843	31,259	54,158
June	4,158	57,697	3,164	23,530	939	27,620	61,182
July	4,462	62,445	3,541	22,223	816	17,094	74,022

(a) Excludes regranulated scrap.

(b) Available for issue through mains.

(c) Excludes self-contained window or wall types.

(d) Excludes soil-heating apparatus prior to July 1989.

BUILDING

TABLE 20. BUILDING APPROVALS

Period	New residential buildings (a)						Alterations and additions to residential buildings (b)	Non-residential building (c)		Total all building
	Private sector		Public sector		Total			Private sector	Total	
	No.	Value (\$'000)	No.	Value (\$'000)	No.	Value (\$'000)		Value (\$'000)	Value (\$'000)	
MELBOURNE STATISTICAL DIVISION										
1990-91	13,448	1,186,990	854	51,028	14,302	1,238,018	392,886	1,087,868	1,423,696	3,054,400
1991-92	15,901	1,381,716	1,201	76,279	17,102	1,457,995	413,323	978,594	1,242,404	3,113,722
1992-93	18,949	1,663,728	888	52,930	19,835	1,716,658	429,731	858,160	1,138,241	3,284,630
1992 -										
February	1,223	104,427	55	4,048	1,278	108,475	35,079	72,985	107,346	250,901
March	1,394	118,851	163	10,087	1,557	128,938	37,180	70,224	94,932	261,050
April	1,361	117,739	203	14,899	1,564	132,638	32,557	52,858	56,859	222,054
May	1,533	129,422	34	2,106	1,567	131,528	35,402	47,910	64,187	231,097
June	1,469	130,128	79	3,768	1,548	133,896	32,042	39,571	60,505	228,443
July	1,749	151,190	48	2,695	1,797	153,885	37,446	67,317	98,067	287,399
August	1,605	135,470	1	30	1,608	135,500	32,454	151,084	167,834	335,588
September	1,576	134,996	13	756	1,589	135,752	39,117	50,488	63,978	238,847
October	1,742	155,017	50	2,582	1,792	157,579	39,808	39,889	55,766	253,153
November	1,509	132,339	180	10,911	1,689	143,250	37,068	52,293	70,258	250,577
December	1,680	146,414	44	2,138	1,724	148,552	38,168	87,862	93,056	279,776
1993 -										
January	1,114	98,850	219	13,110	1,333	111,760	27,807	57,692	78,197	217,764
February	1,524	135,538	102	9,041	1,626	144,579	30,967	47,357	72,051	247,597
March	1,738	157,536	109	5,300	1,847	162,836	36,699	113,759	143,785	343,300
April	1,489	129,125	48	2,508	1,537	131,633	33,704	47,323	60,987	226,304
May	1,615	144,683	17	958	1,632	145,641	37,199	71,294	85,573	268,412
June	1,608	142,771	65	2,920	1,683	145,691	39,294	71,801	150,298	335,913
July	1,769	157,028	77	5,262	1,846	162,288	37,462	40,235	78,279	278,030
TOTAL VICTORIA										
1990-91	22,066	1,867,210	1,185	69,477	23,251	1,936,687	491,230	1,253,844	1,678,157	4,106,074
1991-92	24,290	2,063,184	1,723	107,753	26,013	2,170,937	514,111	1,114,876	1,473,715	4,158,763
1992-93	28,155	2,408,177	1,416	85,963	27,644	3,027,181	533,042	1,066,219	1,406,261	4,433,442
1992 -										
February	1,937	162,402	79	5,580	2,016	167,982	43,998	83,420	123,625	335,605
March	2,140	178,429	265	16,052	2,405	194,482	47,347	83,079	113,677	355,506
April	2,062	174,742	263	19,446	2,345	194,188	41,113	60,574	90,093	325,394
May	2,239	185,193	52	3,054	2,291	188,247	44,285	85,577	94,503	327,035
June	2,249	192,817	112	5,937	2,361	198,554	40,517	53,593	76,714	315,784
July	2,563	217,031	74	4,242	2,637	221,273	46,264	80,933	114,552	362,088
August	2,353	195,098	6	380	2,359	195,479	40,100	190,205	211,884	447,463
September	2,416	201,742	63	4,116	2,479	205,859	47,449	77,114	96,159	349,466
October	2,511	216,075	74	4,191	2,585	220,266	50,212	52,706	70,048	340,525
November	2,322	199,623	267	16,600	2,589	216,223	46,981	68,748	92,983	356,186
December	2,441	207,460	47	2,326	2,488	209,785	45,806	105,176	113,499	369,090
1993 -										
January	1,755	149,018	335	18,708	2,090	167,724	34,057	67,934	93,505	295,286
February	2,188	191,209	148	12,273	2,336	203,482	39,145	63,712	91,490	334,117
March	2,626	227,790	136	7,294	2,762	236,085	46,108	126,220	156,711	439,904
April	2,192	188,474	109	7,143	2,301	193,617	43,153	60,205	77,133	313,902
May	2,411	210,014	69	4,040	2,480	214,054	45,981	81,781	107,761	367,795
June	2,377	206,844	88	4,649	2,465	211,293	47,786	91,486	178,538	437,617
July	2,561	221,093	98	5,392	2,659	229,485	46,750	49,163	90,393	366,828

(a) Commencing with July 1990 comprise jobs valued at \$10,000 and over. (b) Valued at \$10,000 and over. (c) Prior to July 1988 comprised jobs valued at \$10,000 and over. From July 1988 to June 1990 comprised jobs valued at \$30,000 and over. Commencing with July 1990 comprise jobs valued at \$50,000 and over.

TABLE 21. NEW HOUSES AND OTHER RESIDENTIAL BUILDINGS: NUMBER OF DWELLING UNITS, VICTORIA

Period	New houses				New other residential buildings			
	Approved	Commenced	Under construction	Completed	Approved	Commenced	Under construction	Completed
1990-91	20,916	21,094	11,512	25,216	2,336	2,486	1,999	2,898
1991-92	23,085	22,392	11,210	22,401	2,948	3,033	2,165	2,877
1992-93	27,158	25,734	11,805	25,083	2,438	2,413	2,022	2,566
1991 -								
Dec qr	5,680	5,898	11,597	6,080	779	677	1,921	610
1992 -								
Mar. qr	5,384	4,949	11,206	5,101	771	619	2,060	480
June qr	6,299	6,185	11,210	6,178	698	1,008	2,165	917
Sept qr	6,938	6,178	11,402	5,984	537	589	2,117	635
Dec qr	6,958	6,935	11,896	6,432	704	484	1,813	755
Mar. qr	6,586	5,852	11,596	6,153	802	757	2,023	547
Jun qr	6,676	6,770	11,805	6,534	570	634	2,022	635

TABLE 22. VALUE OF BUILDING, VICTORIA (\$m)

Period	Residential buildings			Non-residential building					Total
	New	Alterations and additions	Completed	Shops	Factories	Business premises	Education	Health	
COMMENCED									
1990-91	2,020.8	532.7	229.8	421.1	872.4	187.9	67.5	351.9	4,684.3
1991-92r	2,196.0	542.7	161.9	353.5	590.2	194.1	112.1	218.1	4,368.5
1992-93	2,429.9	562.0	184.4	187.2	395.7	178.5	273.4	294.4	4,505.4
1992 -									
Mar. qr	489.3	140.8	20.4	29.9	97.8	60.6	25.0	46.5	910.2
June qr	605.9	139.4	43.2	55.4	200.4	37.4	54.4	96.2	1,232.3
Sept qr	585.5	133.8	58.7	21.4	104.3	53.2	62.1	53.4	1,070.4
Dec qr	640.9	161.0	38.8	89.6	102.3	42.4	32.3	58.7	1,166.1
1993 -									
Mar qr r	583.5	129.8	38.9	33.3	102.1	48.2	151.5	86.9	1,154.2
Jun qr p	639.9	137.5	49.9	42.9	87.0	34.6	27.5	95.3	1,114.8
UNDER CONSTRUCTION AT END OF PERIOD									
1990-91	1,281.5	253.6	204.5	570.2	3,019.5	189.2	299.7	543.3	8,361.5
1991-92	1,262.4	258.7	177.5	554.2	2,147.8	173.4	243.3	167.6	4,984.7
1992-93	1,297.2	243.6	74.1	347.9	995.8	132.1	412.6	227.8	3,731.2
1992 -									
Mar. qr	1,287.5	262.1	154.8	733.3	2,218.7	165.7	212.9	168.6	5,203.4
June qr	1,262.4	258.7	177.5	554.2	2,147.6	173.4	243.3	167.6	4,984.7
Sept qr	1,275.2	252.1	119.4	430.3	1,917.5	161.5	296.8	169.3	4,622.0
Dec qr	1,308.6	246.3	62.7	314.5	1,845.0	150.9	294.1	169.0	4,391.2
1993 -									
Mar qr r	1,293.7	241.7	62.5	330.1	1,234.2	150.8	427.8	177.2	3,918.1
Jun qr p	1,297.2	243.6	74.1	347.9	995.8	132.1	412.6	227.8	3,731.2
COMPLETED									
1990-91	2,600.6	601.2	580.2	380.7	2,112.5	266.8	195.2	482.3	7,199.5
1991-92	2,242.8	543.1	195.4	390.1	1,523.4	210.8	166.4	518.9	5,790.5
1992-93	2,411.7	583.5	289.7	380.5	1,565.1	222.2	107.4	237.6	5,797.7
1992 -									
Mar. qr	494.0	133.4	22.7	61.7	312.4	60.9	18.1	209.2	1,312.3
June qr	641.6	138.5	21.4	224.7	285.1	30.1	24.5	96.2	1,462.3
Sept qr	573.9	144.4	115.3	148.3	344.2	65.2	10.2	57.6	1,459.1
Dec qr	616.6	162.7	96.9	186.5	185.6	53.2	35.9	60.8	1,400.3
1993 -									
Mar qr r	581.5	135.3	38.4	20.9	710.3	49.7	18.4	72.1	1,626.5
Jun qr p	639.6	141.1	36.1	22.8	326.0	54.0	42.9	47.1	1,311.8

FINANCE

TABLE 23. STATEMENT OF BUDGET SECTOR TRANSACTIONS, VICTORIA (a)

	(\$m)		
	Budget Estimate 1992-93	Actual 12 months to 30.6.1993	Actual 12 months to 30.6.1992
OUTLAYS			
Current Outlays			
Education	3 057.5	3 050.7	3 059.7
Health	2 646.0	2 645.8	2 671.6
Interest	1 941.9	2 035.7	1 733.8
Superannuation	911.9	914.3	800.0
Public Order and Safety	806.2	805.5	770.3
Social Security and Welfare	796.7	784.8	695.6
Transport	485.0	484.0	525.3
Workers Compensation	266.5	255.1	278.9
Other	1 280.8	1 240.5	937.8
Current Commonwealth Grants On-passed	1 527.7	1 537.3	1 495.9
Total Current Outlays	13 720.0	13 753.8	12 968.7
Capital Outlays			
Transport	790.1	818.8	752.9
Housing and Community Amenities	411.7	399.0	333.1
Education	224.7	222.8	283.1
Health	181.8	183.2	182.3
Public Order and Safety	40.6	36.7	56.9
Social Security and Welfare	48.0	47.0	38.3
Separation Packages	800.0	772.7	200.4
Other	197.6	187.2	181.9
Business Asset Sales	-140.0	-140.0	0.0
Non-Business Asset Sales	-104.0	-138.3	-110.3
Capital Commonwealth Grants On-passed	109.6	111.2	85.7
Total Capital Outlays	2 560.0	2 440.1	1 984.3
TOTAL OUTLAYS	16 280.0	16 193.9	14 953.0
REVENUE			
Taxes, Fees and Fines			
Payroll Tax	1 646.0	1 662.8	1 725.9
Stamp Duty on Financial and Capital Transactions	760.3	796.1	753.2
State Deficit Levy on rateable properties	157.0	187.5	0.0
Financial Institutions Transaction Taxes	402.0	409.5	409.1
Franchise Taxes	802.0	850.6	793.0
Motor Vehicle Taxes	615.9	622.4	507.0
Land Taxes	494.6	481.0	465.0
Taxes on Private Lotteries	286.0	290.2	300.2
Race Betting Taxes	198.7	198.4	191.6
Electronic Gaming Machines	89.6	94.9	0.2
Other Gambling Taxes	17.2	16.8	21.2
Levies on Statutory Corporations	287.0	283.6	258.0
Taxes on Insurance	186.5	184.8	148.0
Other Taxes, Fees and Fines	158.2	173.3	181.3
Total Taxes, Fees and Fines	8 098.0	8 231.9	5 753.7
Interest Received	54.2	53.9	89.5
Royalties	80.0	57.3	62.2
Income from Public Trading and Financial Enterprises	587.4	581.5	566.2
Other State Revenue	67.0	65.9	73.3
Total Revenue	8 886.6	8 990.5	6 544.9
Grants			
Grants Received from Commonwealth	5 322.3	5 374.4	5 181.6
Commonwealth Grants for On-Passing	1 624.0	1 619.4	1 595.4
Total Grants	6 946.3	6 993.8	6 777.0
TOTAL REVENUE AND GRANTS RECEIVED	15 812.7	15 984.3	13 321.9
FINANCING TRANSACTIONS			
Net Advances from Commonwealth	-530.9	-579.7	-683.5
Other Net Borrowing	2 546.5	2 713.1	2 326.1
Other, including changes in Cash Balances and Investments	481.8	78.2	-11.8
TOTAL FINANCING TRANSACTIONS	2 497.4	2 209.6	1 630.8

Source: Treasurer of Victoria

(a) This monthly statement of budget sector transactions (the Memorandum Statement) is presented in Government Finance Statistics format.

TABLE 24. ACTUAL PRIVATE NEW CAPITAL EXPENDITURE BY INDUSTRY GROUP AND TYPE OF ASSET, VICTORIA
(\$m)

Quarter	Selected industry in ASIC subdivision				Type of asset		
	Mining	Manufacturing	Finance, etc.	Other selected industries	Total	New buildings and structures	Other new capital equipment
1987-88 - June	n.p.	790	508	n.p.	1,900	801	1,299
1988-89 - September	n.p.	550	520	n.p.	1,598	549	1,049
December	n.p.	720	585	n.p.	2,136	677	145
March	n.p.	696	602	n.p.	1,916	589	1,327
June	n.p.	742	553	n.p.	2,137	702	1,435
1989-90 - September	n.p.	650	551	n.p.	1,986	757	1,229
December	n.p.	790	603	n.p.	2,237	861	1,376
March	n.p.	664	493	n.p.	1,668	620	1,048
June	n.p.	699	657	n.p.	1,947	745	1,202
1990-91 - September	n.p.	588	619	n.p.	1,841	697	1,144
December	n.p.	613	502	n.p.	1,872	638	1,034
March	n.p.	506	361	n.p.	1,364	445	919
June r	n.p.	473	420	n.p.	1,480	549	931
1991-92 - September r	n.p.	492	417	n.p.	1,455	444	1,010
December r	n.p.	492	312	n.p.	1,357	393	964
March	n.p.	400	260	n.p.	1,117	305	813
June r	n.p.	509	299	n.p.	1,353	349	1,004
1992-93 - September	n.p.	435	353	n.p.	1,237	390	847
December	n.p.	549	254	n.p.	1,473	383	1,090
March	n.p.	445	234	n.p.	1,173	298	875

TABLE 25. EXPECTED AND SUBSEQUENTLY REPORTED ACTUAL PRIVATE NEW CAPITAL EXPENDITURE BY INDUSTRY GROUP AND TYPE OF ASSET, VICTORIA
(\$m)

Period	Selected industry in ASIC subdivision				Type of asset		
	Mining	Manu- facturing	Finance, etc.	Other selected industries	Total	New buildings and structures	Other new capital equipment
12 months ending 30 June 1989							
Expected	n.p.	2,634	2,287	n.p.	7,338	2,724	4,814
Actual	n.p.	2,708	2,240	n.p.	7,788	2,517	5,270
6 months ending 30 June 1989							
Expected	n.p.	1,378	1,242	n.p.	3,845	1,586	2,258
Actual	n.p.	1,438	1,155	n.p.	4,053	1,291	2,762
12 months ending 30 June 1990							
Expected	n.p.	2,322	2,411	n.p.	6,561	2,810	3,750
Actual	n.p.	2,803	2,304	n.p.	7,838	2,983	4,855
6 months ending 30 June 1990							
Expected	n.p.	1,427	1,401	n.p.	3,845	1,476	2,369
Actual	n.p.	1,363	1,150	n.p.	3,615	1,365	2,250
12 months ending 30 June 1991							
Expected r	n.p.	2,386	2,252	n.p.	6,578	2,655	3,922
Actual	n.p.	2,180	1,902	n.p.	6,357	2,329	4,028
6 months ending 30 June 1991							
Expected	n.p.	1,051	1,047	n.p.	3,039	1,138	1,901
Actual	n.p.	979	781	n.p.	2,844	994	1,850
12 months ending 30 June 1992							
Expected	n.p.	1,944	1,325	n.p.	4,687	1,410	3,277
Actual	n.p.	1,876	1,268	n.p.	5,248	1,490	3,758
12 months ending 30 June 1993							
Expected	n.p.	2,241	822	n.p.	4,778	1,447	3,330

TABLE 26. HOUSING FINANCE FOR OWNER OCCUPATION, SECURED LOANS TO INDIVIDUALS BY TYPE OF LENDER, VICTORIA

Period	Type of Lender							
	All banks		Permanent building societies		Other lenders		Total	
	Dwelling units	\$ million	Dwelling units	\$ million	Dwelling units	\$ million	Dwelling units	\$ million
NUMBER OF DWELLING UNITS FINANCED								
1990-91	59,092	4,332	2,891	203	6,302	421	68,285	4,956
1991-92	72,483	5,833	6,196	456	7,210	512	85,899	6,599
1992-93	94,554	7,992	3,671	263	4,106	280	102,331	8,533
1992 -								
January	4,659	356	419	30	591	39	5,669	425
February	5,406	417	692	52	502	34	6,800	503
March	6,106	479	693	54	393	28	7,192	561
April	6,609	526	613	47	387	27	7,609	600
May	7,008	556	545	43	528	35	8,081	634
June	6,778	549	528	38	651	42	7,957	630
July	7,640	616	297	18	609	40	8,546	674
August	6,945	558	298	21	560	37	7,803	615
September	8,237	674	274	19	460	31	8,971	724
October	7,809	637	278	18	477	35	8,564	691
November	8,252	677	266	19	391	27	8,909	722
December	7,882	677	325	24	458	32	8,665	732
1993 -								
January	6,016	510	279	22	226	14	6,521	546
February	7,201	583	245	19	211	13	7,857	615
March	9,580	770	339	27	178	11	10,097	808
April	6,664	665	310	22	170	13	7,144	700
May	8,849	781	332	24	164	12	9,345	817
June	9,479	844	428	30	202	15	10,109	889

TABLE 27. COMMERCIAL FINANCE, COMMITMENTS, VICTORIA (\$m)

Period	Fixed loan facilities							Type of lender				
	Construction	Purchase of real property		Purchase of plant and equipment		Wholesale	Other	Total	Revolving credit facilities	Total commitments	All other	
		Banks	lenders									
1992 -												
January	8.1	85.3	56.2	36.8	267.3	453.7	1,247.7	1,701.5	1,610.7	90.8		
February	15.8	92.9	88.0	35.9	226.4	459.0	848.1	1,307.1	1,178.9	128.2		
March	17.5	104.4	69.6	44.7	223.6	459.8	588.6	1,048.4	887.7	160.8		
April	23.9	114.4	73.9	53.3	463.4	728.8	839.0	1,567.8	1,383.2	184.6		
May	15.7	120.5	67.3	59.1	249.4	511.9	767.4	1,279.2	1,128.2	151.1		
June	25.4	150.8	84.7	46.5	700.6	1,007.8	1,383.7	2,391.5	2,264.0	127.5		
July	31.3	183.4	93.0	151.4	406.4	865.6	1,717.5	2,583.1	2,356.6	226.4		
August	23.9	121.9	88.9	43.9	249.0	527.7	1,339.8	1,887.5	1,590.7	276.8		
September	28.8	140.9	90.5	38.0	703.0	1,001.0	1,636.4	2,637.4	2,280.6	356.7		
October	33.4	109.5	97.8	40.9	568.2	849.9	790.7	1,640.6	1,471.0	169.7		
November	30.5	117.3	135.9	39.6	196.0	519.4	984.4	1,503.7	993.0	510.7		
December	35.4	152.3	116.3	57.0	302.5	663.6	1,480.0	2,143.5	1,673.8	470.0		
1993 -												
January	29.1	102.7	73.7	29.5	191.8	426.6	813.6	1,240.3	1,006.2	232.1		
February	17.5	107.3	88.8	40.0	249.7	503.2	925.0	1,428.2	1,144.7	283.5		
March	54.4	189.5	106.7	50.8	384.3	795.7	977.0	1,762.7	1,533.6	229.1		
April	28.9	146.1	98.0	67.4	238.8	579.1	1,053.8	1,632.0	1,283.6	348.3		
May	36.6	180.9	108.8	51.1	276.4	653.6	1,290.5	1,944.1	1,670.0	274.1		
June	83.4	279.3	125.4	56.6	436.0	980.7	1,413.1	2,393.8	2,067.3	326.6		

**TABLE 28. PERSONAL FINANCE COMMITMENTS BY TYPE OF LENDER
AND TYPE OF CREDIT, VICTORIA**

Period	Type of lender				Type of credit		
	All banks	Credit unions	Finance companies	Other	Total	Fixed loans	Revolving credit (credit cards, etc.)
	(\$m)						
1991 -							
December	258.2	29.3	59.8	9.5	356.7	214.9	141.8
1992 -							
January	221.1	28.1	47.5	9.9	306.6	210.5	98.1
February	224.1	28.0	45.6	10.0	307.7	210.2	97.5
March	224.5	37.6	54.8	10.6	327.6	232.0	95.5
April	270.8	35.9	52.2	19.3	378.1	259.1	119.0
May	266.7	36.9	56.6	21.6	381.8	239.1	142.7
June	276.9	36.7	65.3	21.3	400.3	260.0	140.3
July	381.9	35.9	64.3	23.5	485.6	317.9	167.7
August	241.6	25.5	136.0	22.0	425.0	232.9	192.0
September	279.2	26.1	63.1	23.8	392.2	260.7	131.6
October	269.2	27.3	61.2	23.6	381.3	224.0	157.3
November	284.4	27.3	59.8	21.3	392.8	223.3	169.5
December	248.9	22.5	63.7	40.4	375.5	250.1	125.5
1993 -							
January	193.8	24.4	58.6	17.7	294.5	199.5	95.1
February	207.6	25.0	50.9	17.1	300.6	201.7	98.9
March	277.4	31.0	61.6	24.3	394.3	260.5	133.8
April	251.8	29.9	57.1	18.8	357.7	205.7	152.0
May	292.4	28.6	56.8	22.1	399.9	224.0	175.9
June	370.7	31.7	61.3	21.2	484.9	284.7	200.2

**TABLE 29. LEASE FINANCE, VALUE OF GOODS UNDER NEW LEASE
FINANCE COMMITMENTS, VICTORIA**

Period	(\$m)						Total
	Motor vehicles	Other	Total finance lease commitments	Commitments not drawn at end of period	Lessor		
					Finance companies	Other lessors	
1992 -							
January	44.0	22.0	66.0	112.9	36.2	29.8	66.0
February	38.9	32.8	68.5	112.2	34.3	34.2	68.5
March	48.9	39.7	88.6	114.6	43.7	44.9	88.6
April	49.8	24.8	74.4	118.7	40.4	34.0	74.4
May	43.3	41.0	84.4	108.9	36.2	48.1	84.4
June	82.0	59.5	121.5	103.9	46.6	74.9	121.5
July	52.3	66.8	119.2	68.2	46.3	73.0	119.2
August	47.2	34.6	81.8	68.8	45.7	36.1	81.8
September	55.5	45.7	101.2	70.0	50.9	50.4	101.2
October	53.1	44.5	97.6	72.4	39.1	58.5	97.6
November	49.5	23.6	73.2	66.9	38.9	34.3	73.2
December	54.5	54.7	109.1	75.9	41.6	67.5	109.1
1993 -							
January	37.6	19.6	57.2	79.1	25.0	32.1	57.2
February	37.1	30.3	67.2	74.1	25.2	41.9	67.2
March	52.5	29.4	82.0	64.4	32.5	49.5	82.0
April	51.3	24.7	75.9	76.2	33.4	42.6	75.9
May	54.5	38.6	93.2	80.5	35.8	57.4	93.2
June	77.3	135.3	212.5	81.7	47.4	165.0	212.5

TRADE

TABLE 30. RETAIL TURNOVER BY INDUSTRY, (EXCL. MOTOR VEHICLES, PARTS, PETROL, ETC.), VICTORIA
(\$m)

Period	Food stores	Butchers	Hotels, liquor stores, and licensed clubs	Cafes and restaurants	Clothing and footwear stores	Department and general stores	Domestic hard ware stores and jewellers	Electrical goods stores	Furniture and floor coverings stores	Pharmacies	News-agents	Other	Total
1992 -													
May	759.3	42.8	152.8	83.7	187.7	201.6	69.8	96.4	52.5	79.9	54.7	85.3	1,866.5
June	707.0	45.2	152.2	86.2	171.7	192.6	63.8	93.8	57.8	82.2	48.0	78.6	1,779.1
July	748.1	45.6	158.3	87.2	174.3	182.7	71.5	100.7	58.7	84.8	52.3	82.0	1,846.1
Aug.	720.1	42.9	156.9	84.8	148.7	169.2	64.4	94.5	58.0	81.5	48.7	82.4	1,751.9
Sept.	730.3	40.5	152.1	98.3	154.3	187.9	70.8	102.3	51.2	81.7	52.5	97.7	1,819.6
Oct.	790.3	41.8	161.4	97.2	181.8	206.1	86.9	104.1	58.2	84.5	51.9	115.4	1,979.7
Nov.	742.7	39.5	156.4	98.5	167.3	224.6	83.6	103.1	56.2	88.4	53.5	116.4	1,930.3
Dec.	875.2	51.6	211.6	118.2	252.5	388.3	131.9	156.1	59.5	101.9	77.0	173.0	2,596.8
1993 -													
Jan.	788.6	39.8	156.5	100.4	164.7	178.9	82.1	104.5	58.9	79.3	57.8	88.4	1,899.5
Feb.	717.5	38.5	145.0	89.1	131.7	145.7	76.4	91.3	55.5	67.2	57.9	82.9	1,698.8
Mar.	767.7	41.7	156.9	98.8	154.3	177.2	88.7	106.4	63.3	83.8	62.8	92.5	1,894.4
Apr.	777.8	41.5	159.3	95.9	164.8	200.8	89.4	101.0	61.4	85.1	58.9	94.5	1,928.4
May	747.6	41.3	151.3	100.7	172.6	213.3	89.6	103.1	68.2	87.3	58.9	88.3	1,922.1
June	741.3	39.3	147.9	100.1	173.6	205.0	89.1	113.5	64.4	102.6	52.6	88.9	1,918.1
July	783.7	40.7	164.2	106.6	172.9	171.8	82.4	120.5	66.2	101.4	57.9	92.7	1,961.0

TABLE 31. VALUE OF OVERSEAS TRADE, VICTORIA AND AUSTRALIA
(\$m)

Period	Victoria			Australia		
	Imports	Exports	Excess of exports	Imports	Exports (incl. re-exports)	Excess of exports
1990-91	14,907	8,804	-6,103	48,919	52,455	3,536
1991-92	15,372	9,531	-5,841	51,000	55,014	4,015
1992-93	18,163	11,036	-7,127	59,586	60,773	1,187
1991 -						
August	1,229	801	-438	4,041	4,625	584
September	1,137	766	-421	4,219	4,637	418
October	1,391	768	-623	4,714	4,405	-309
November	1,385	763	-622	4,626	4,585	-41
December	1,186	849	-337	3,948	4,702	754
1992 -						
January	1,205	724	-481	4,052	4,415	363
February	1,280	756	-524	3,923	4,249	326
March	1,342	885	-457	4,342	4,787	445
April	1,264	808	-456	4,149	4,611	462
May	1,304	847	-457	4,080	4,912	832
June	1,277	814	-463	4,458	4,738	280
July	1,540	759	-781	5,341	4,839	502
August	1,398	793	-605	4,522	4,707	185
September	1,436	924	-512	5,179	5,213	34
October	1,665	778	-887	5,430	4,858	-572
November	1,460	1,023	-437	5,173	5,238	65
December	1,437	909	-528	4,875	5,486	611
1993 -						
January	1,299	850	-449	4,282	4,690	408
February	1,322	874	-448	4,434	4,689	255
March	1,637	897	-740	5,568	5,060	-508
April	1,540	840	-700	4,804	4,824	20
May	1,481	979	-482	4,822	5,074	252
June	1,581	941	-620	5,163	5,133	-30

**TABLE 32. EXPORTS AND IMPORTS BY SECTIONS OF THE
AUSTRALIAN EXPORT AND IMPORT COMMODITY CLASSIFICATIONS, VICTORIA**
(\$m)

Section	1991-92		12 months ended June 1992	
	Imports	Exports	Imports	Exports
0 Food and live animals chiefly for food	646	2,059	703	2,845
1 Beverages and tobacco	112	38	122	52
2 Crude materials, inedible (except fuels)	425	1,415	495	1,364
3 Mineral fuels, lubricants, and related materials	187	481	404	1,790
4 Animal and vegetable oils, fats, and waxes	57	10	70	55
5 Chemicals and related products, nec	1,593	434	1,839	586
6 Manufactured goods classified chiefly by material	2,947	1,516	3,261	1,771
7 Machinery and transport equipment	6,152	1,388	7,494	1,530
8 Miscellaneous manufactured articles	2,784	514	3,238	580
9 Commodities and transactions of merchandise trade, nec	469	1,675	r537	r1,663
Total	15,372	9,531	r18,163	r11,036

TABLE 33. OVERSEAS TRADE, MAJOR TRADING PARTNERS, VICTORIA
(\$m)

Country	1990-91		1991-92		12 months ended June 1993	
	Imports	Exports	Imports	Exports	Imports r	Exports r
Brazil	128	4	132	10	121	23
Canada	239	94	245	96	266	147
China -						
Excluding Taiwan Province	661	198	889	249	1,171	539
Taiwan province only	646	403	713	517	765	514
Egypt, Arab Republic of	1	55	1	58	2	45
France	453	151	341	167	383	180
Germany	1,326	284	1,199	297	1,448	254
Hong Kong	256	347	270	501	264	577
India	99	84	116	83	150	77
Indonesia	113	169	156	164	233	199
Italy	437	204	414	191	501	170
Japan	2,679	1,569	2,882	1,698	3,315	1,629
Korea, Republic of	500	587	413	558	465	689
Malaysia	179	249	207	264	284	346
Netherlands	168	29	152	47	173	45
New Zealand	724	728	764	825	869	951
Papua New Guinea	24	144	24	189	28	197
Saudi Arabia	89	81	74	87	147	113
Singapore	376	518	318	802	370	1,188
Sweden	257	21	254	20	318	30
Switzerland	192	27	190	27	223	13
Thailand	169	238	203	233	223	321
USSR	8	90	4	55	1	7
United Kingdom	1,04	281	1,006	310	1,050	334
United States of America	3,115	1,189	3,306	947	3,974	934
Other and unknown	462	519	1,111	1,148	1,419	1,515
Total	14,907	8,847	15,372	9,531	18,163	11,037

TABLE 34. TOURIST ACCOMMODATION

Period	Hotels, motels, etc. with facilities				Short-term caravan parks			
	No. of establishments	Capacity (No. of guest rooms)	Room	Takings from accommodation (\$'000)	No. of establishments	Capacity (No. of sites and cabins)	Site	Takings from accommodation (\$'000)
			occupancy rates (per cent)				occupancy rates (per cent)	
MELBOURNE STATISTICAL DIVISION								
1991 -								
March qr	242	13,341	54	66,431	49	5,596	60	1,793
June qr	244	13,602	50	64,154	48	5,625	42	1,196
Sept qr	238	13,491	53	67,045	49	5,572	42	1,710
Dec qr	242	13,856	56	74,634	49	5,574	56	1,848
1992 -								
March qr	244	13,906	56	72,858	49	5,570	60	1,781
June qr	249	14,679	51	66,836	48	5,535	48	1,197
Sept qr	246	14,543	51	67,552	47	5,295	47	1,574
Dec qr	248	14,847	55	75,483	49	5,452	57	1,745
1993								
March qr	248	14,817	55	73,860	49	5,417	58	1,561
June qr	250	14,928	51	70,420	48	5,378	48	1,182
TOTAL VICTORIA								
1991 -								
March qr	1,030	28,360	48	59,045	451	54,784	42	16,389
June qr	1,034	28,705	44	93,130	452	54,686	30	8,583
Sept qr	1,024	28,695	45	99,749	453	54,801	28	9,227
Dec qr	1,029	29,077	47	105,203	456	54,927	34	12,592
1992 -								
March qr	1,032	29,063	48	105,946	455	54,822	41	15,896
June qr	1,037	29,949	44	96,903	453	54,628	35	9,729
Sept qr	1,031	29,595	44	101,967	440	53,654	33	9,424
Dec qr	1,039	29,995	47	106,498	442	53,482	38	12,975
1993								
March qr	1,040	29,944	48	107,633	444	53,935	45	16,443
June qr	1,051	30,278	45	101,757	445	54,351	37	10,038

TABLE 35. REGISTRATIONS OF NEW MOTOR VEHICLES, VICTORIA
(Excludes defence service vehicles, but includes other Australian Government-owned vehicles)

Period	Passenger vehicles		Other vehicles (excluding motor cycles)		Total (excluding motor cycles)		Motor cycles	Total motor vehicles
	Original	Seasonally	Original	Seasonally	Original	Seasonally		
		adjusted		adjusted		adjusted		
1990-91	108,444	..	17,570	..	126,014	..	4,502	130,516
1991-92	98,766	..	14,152	..	112,918	..	3,878	116,796
1992-93	106,213	..	17,683	..	123,896	..	4,528	128,424
1992 -								
April	7,664	8,339	1,226	1,227	8,890	9,566	374	9,264
May	8,015	8,091	1,420	1,323	9,435	9,414	335	9,770
June	9,170	8,574	1,514	1,356	10,684	9,930	335	11,019
July	9,383	8,597	1,506	1,218	10,889	9,815	369	11,258
August	9,136	9,441	1,415	1,422	10,551	10,863	331	10,882
September	8,766	7,823	1,483	1,478	10,259	9,301	361	10,620
October	9,754	9,729	1,563	1,603	11,317	11,332	411	11,728
November	8,228	8,376	1,375	1,495	9,603	9,871	379	9,982
December	9,739	8,929	1,568	1,708	11,307	10,637	423	11,730
1993								
January	6,469	8,895	1,087	1,542	7,536	10,437	419	7,955
February	8,017	8,520	1,220	1,292	9,237	9,812	379	9,616
March	9,646	8,569	1,488	1,293	11,134	9,862	403	11,537
April	8,704	9,560	1,416	1,428	10,120	10,988	382	10,502
May	8,742	9,015	1,541	1,426	10,283	10,441	339	10,622
June	9,629	8,767	2,031	1,820	11,660	10,587	332	11,992
July	9,372	9,030	1,426	1,223	10,798	10,253	316	11,114

NOTES

The aim of this publication is to provide the user with a selected range of the latest statistics available at the end of each month of issue. Consequently the dates and periods shown are not always the same for each table but are in each case the latest figures available at that time.

As a general rule footnotes do not appear in this publication.

Seasonal adjustment

2. Seasonal adjustment is a means of removing the estimated effects of normal seasonal variations from economic time series so that the effects of other influences are more obvious. Seasonal variations are the systematic (though not necessarily regular) intra-year movements of economic time series. These are often the result of non-economic phenomena, such as climatic changes and regular religious festivals (e.g. Christmas and Easter).

ABS publications

3. Current publications issued by the ABS are listed in the Catalogue of Publications, Australia (1101.0), which is available free of charge from any ABS Office.

Unpublished statistics

4. In some cases the ABS can also make available information which is not published. This information may be made available in one or more of the following forms: microfiche, photocopy, data tape, computer printout, manually extracted tabulation. Generally a charge is made for providing unpublished information.

ABS Electronic data

5. A wide range of data is available electronically.

DISCOVERY

Key *856# for selected current economic, social and demographic statistics.

PC-TELESTATS

This service delivers major economic indicator publications ready to download to your computer on the day of release. Phone (06) 252 5404.

PC-AUSSTATS

Thousands of up-to-date time series are available on PC-AUSSTATS. Phone (03) 615 7769.

CDATA91

CDATA91 is a CD-ROM (Compact Disc - Read Only Memory) product which allows desktop analysis of 1991 Population Census data for small areas. CDATA91 enables users to select data and geographic areas and view this information as tables, maps or graphs, and link this Census information with other data.

For further information about CDATA91, phone (03) 615 7000 and ask for Information Services.

Recorded message services

0055 26400

*Consumer Price Index
National Accounts
Balance of Payments
Labour Force Estimates
Average Weekly Earnings
Estimated Resident Population*

Symbols and other usages

- n.a. not available
- n.e.c. not elsewhere classified
- n.p. not available for publication but included in totals where applicable
- n.y.a. not yet available
- p preliminary - figure or series subject to revision
- r figure or series revised since previous issue
- .. not applicable
- * nil or rounded down to zero
- break in continuity of series (where a line is drawn across a column between two consecutive figures)
- * subject to sampling variability too high for most practical purposes

Where figures have been rounded, discrepancies may occur between sums of the component items and totals.

STUART JACKSON

Deputy Commonwealth Statistician

