

D

12 DEC 1957
DEC 1957

COMMONWEALTH BUREAU OF CENSUS AND STATISTICS, CANBERRA,
AUSTRALIA.

COMMONWEALTH BUREAU
OF CENSUS AND STATISTICS

MONTHLY BULLETIN OF PRODUCTION STATISTICS.

No. 108 NOVEMBER, 1957

PREPARED UNDER INSTRUCTIONS FROM THE RIGHT HONORABLE THE TREASURER

BY

S. R. CARVER.

COMMONWEALTH STATISTICIAN

MONTHLY PRODUCTION: AUSTRALIA

1938-39, 1956-57, 1957-58

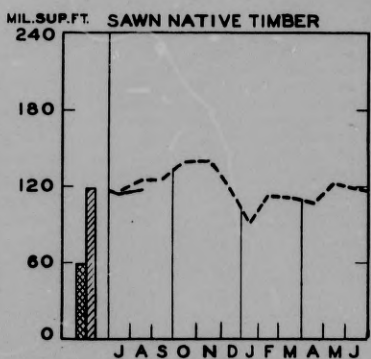
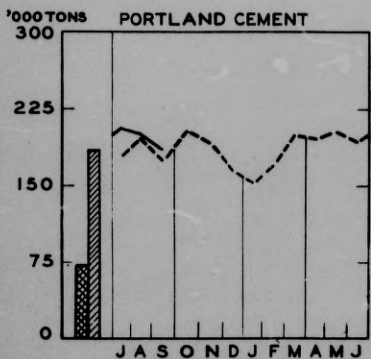
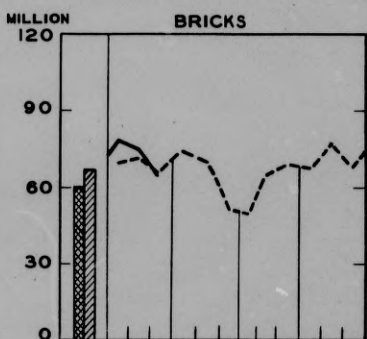
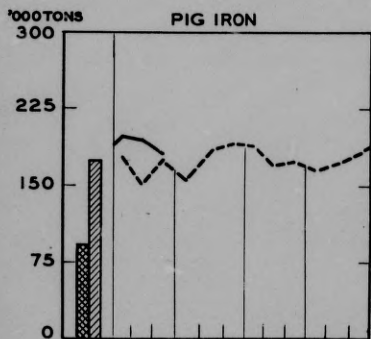
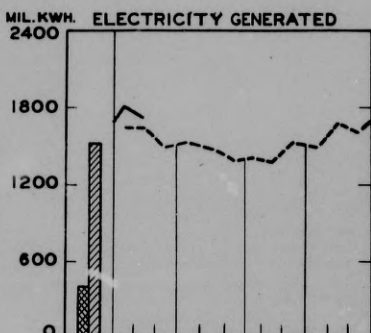
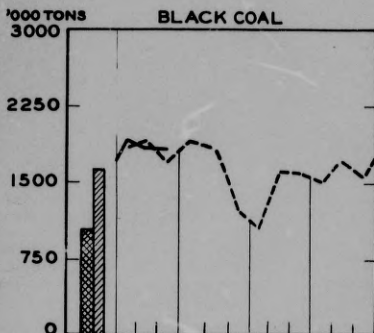


MONTHLY AVERAGE 1938-39



MONTHLY AVERAGE 1956-57

— 1957-58
- - - 1956-57



MONTHLY BULLETIN OF AUSTRALIAN PRODUCTION STATISTICS

No. 108 -- NOVEMBER, 1957.

For the purpose of the accompanying statistics, a "factory" is taken to be a manufacturing establishment in which four or more persons are employed, or in which power other than hand is used and the production of small establishments not classified for statistical purposes as factories is not included in the figures shown herein. Annual totals for 1938-39, 1948-49 and the last three complete financial years are shown in conjunction with (a) totals for the most recent six month and three month periods, together with comparative figures for the same periods twelve months earlier, and (b) monthly totals for each of the latest thirteen months (in most cases).

Figures from July, 1956 onwards are preliminary and subject to revision, but the annual totals shown for 1955-56 are final.

An index of the contents is given on page 2.

Many of the items included are shown in greater detail in the Secondary Industries Bulletin and the series of Manufacturing Industries Bulletins.

The production of each of the commodities listed is given up to the latest available month. For each commodity other than those collected by, or in conjunction with Government Statisticians, the authority responsible for providing the figures is indicated by a footnote to the item title. Figures up to 1955-56 inclusive represent totals derived, wherever possible, from annual factory returns collected by Government Statisticians. It should be noted that in some cases annual returns are accepted from factories for a year other than the normal financial year ending June, 30th.

Production of :-

Heat, Light and Power; Building Materials, Chemicals; Metal and Metal Industries is graphically illustrated in this and alternate issues of this Bulletin.

PERSONS USING THIS BULLETIN ARE ASKED TO NOTE PARTICULARLY THE FOLLOWING :-

1. This Monthly Bulletin of Production Statistics contains data of monthly output of about 150 individual factory products. As monthly particulars of additional items are collected and become available for publication, they will be included in the Bulletin. The items for which quantity of output is published herein are not, however, selected as representative of all factory output. In practice, it is not possible to make such a selection at present.
2. The tables should be read only as showing monthly trends in output of the individual items or groups of items listed. They have not been summarised into a monthly index of Volume of Factory Output, nor a monthly Index of Industrial Production, because they cannot be assumed to be representative of total trends in volume of factory output nor volume of industrial production. It is, in fact, improbable that they are continually representative in this sense.
3. Although the list of items covered in these monthly tables includes only a small proportion of all the items produced in factories, nevertheless, it relates directly to items accounting for about 30 per cent. of total value of factory output.
4. Comparable annual data of quantity of output are collected, at present for a longer list of items covering about one-half of factory production, measured in gross value of output, or slightly less (about 45 per cent.) measured in terms of net value of output or "value added" by process of manufacture. Among the factors limiting useful extension in the annual collection of factory output (in quantitative terms) into the field as yet unrecorded in that way are: (i) the fact that a large part of factory production cannot be expressed in quantity item terms but only as a gross or net value of output; (ii) the great and growing diversity of factory products; and (iii) the absence of homogeneity in many types of factory products.

S.R. CARVER
COMMONWEALTH STATISTICIAN

INDEX OF CONTENTS

	<u>Page</u>		<u>Page</u>		<u>Page</u>
Bacon and Ham	15	Gas	4	Racquet Frames	18
Basins, Wash	5	Gloves	13	Radiators, Electric	8
Bath Heaters	5	Glycerine, Refined	6	Radiograms	8
Bathing Suits	15	Gold (Mine Production)	3	Radios	8
Baths	5	Golf Balls	18	Rayon, Woven Cloth	12
Beef and Veal	16	Golf Clubs	18	Refrigerators, Domestic	8
Beer	18				
Biscuits	17	Hats (Felt)	13	Sandals	13
Blankets	12	Hides and Skins (used in Tanneries)	15	Shirts	15
Blooms and Billets (steel)	3	Hosiery	13	Shoes	13
Boots and Shoes	13	Hydrochloric Acid	6	Shorts	15
Bran (from Wheat)	16	Ice Cream	18	Silver, Refined	3
Brassieres	12	Iron and Steel	3	Sink Heaters, Electric	5
Bricks, Clay	4	Irons (hand)	8	Sinks	6
Briquettes	4	Jam	17	Slippers	13
Butter	18	Jodhpurs	14	Soap	7
		Jugs, Electric	8	Soap Extracts and Powders	7
Cardigans, Pullovers, etc.	15	Kalsomine	7	Socks and Stokings	13
Cement Building Sheets	4	Lacquers, Nitro- cellulose	7	Sports Coats	14
Cement, Portland	4	Lamb	16	Starch, Edible	16
Cheese	18	Lead, Refined	3	Steel, Ingot	3
Chemicals, etc.	6	Malt	16	Stoves, Cooking	5
Cigarettes and Cigars	18	Margarine	17	Sugar, Refined	17
Cleansing and Scouring Powders	7	Mattresses	4	Suits	14
Clothing	12,13,14,15	Meat, Canned	17	Sulphate of Ammonia	6
Coal, Black	3	Meat, Fresh	3	Sulphuric Acid	6
Coal, Brown	3	Metals, Refined	5	Superphosphate	6
Coats, Dust and Working	14	Meters	6		
Coke, Metallurgical	4	Milk Products, Processed	18	Television Sets	8
Confectionery	17	Milk, Whole	18	Tennis Balls	18
Copper, Refined	3	Mixers, Electric	8	Textiles	11,12
Coppers	5	Motor Bodies	10	Thinners	7
Corsets and Corselets	12	Motor Vehicle Chassis	10	Tiles, Roofing	4
Cotton Sewing Threads	11	Mutton	16	Timber, Sawn	4
Cotton Textiles	11	Newsprint	19	Tin, Refined	3
Cotton Yarns	11	Nitric Acid	6	Toasters, Electric	8
Cricket Balls	18	Oatmeal and Rolled Oats	16	Tobacco	18
Cycles, Pedal	9	Overalls	14	Tomato Sauce	17
		Overcoats	16	Tomato Soup	17
Electric Motors	9	Paints	7	Towels	11
Electrical Appliances	8	Pans, Pedestal	5	Trousers	14
Electricity Generated	4	Perambulators	9	Tubes, Inner	10
Enamels, Natural and Synthetic	7	Phonograph Records	19	Tyres, Pneumatic	10
Engines, Internal Combustion	9	Pig Iron	3		
		Pollard (from Wheat)	6	Underwear	15
Fans, Electric	8	Pork	16	Vacuum Cleaners	8
Fibrous Plaster Sheets	4	Pyjama Suits	15	Vegetables, Preserved	17
Fish, Canned	17				
Floor Coverings	18	Wall and Ceiling Boards, Hardboard	19		
Flour (from Wheat)	16	Wash Basins	5		
Footwear	13	Washing Machines	8		
Foundation Garments	12	Wool, Scoured, Tops	3		
Fruit, Preserved	17	Yarn and Cloth	12		
		Yarn, Cotton	11		
		Yarn, Woollen and Worsted	12		
		Zinc Refined	3		

The following symbols are used in this Bulletin:-

n.a. Not available or not available for publication.

.. Nil or less than half the final digit shown.

r Figure or series revised.

— Break in continuity of series (where drawn across a column between two consecutive figures).

A blank space in a column of figures means that the figure concerned is not yet available.

AUSTRALIAN PRODUCTION STATISTICS

Period	Coal			Iron and Steel		
	Black		Brown	Pig Iron (b)	Ingot Steel (b)	Blooms and Billets (b)
	New South Wales (a)	Australia				
	'000 tons	'000 tons	'000 tons	'000 tons	'000 tons	'000 tons
Year : 1938-39	10,383	12,608	3,208	1,105	1,170	1,120
1948-49	11,537	14,843	7,027	1,045	1,178	1,101
1954-55	14,662	19,352	9,668	1,869	2,209	1,953
1955-56	14,629	19,033	10,383	1,910	2,339	2,008
1956-57	15,134	19,637	10,772	2,096	2,853	2,297
Latest 6 Months, 1957	8,076	10,461	5,644	1,100	1,542	1,305
Same 6 Months, 1956	8,122	10,497	5,553	1,028	1,282	1,095
Latest 3 Months, 1957	4,298	5,579	2,875	577	798	695
Same 3 Months, 1956	4,236	5,485	2,880	509	666	545
Month, 1956 :						
September	1,312	1,703	930	178	229	182
October	1,468	1,901	951	158	226	186
November	1,425	1,837	892	188	248	200
December	988	1,271	723	193	247	185
1957 :						
January	835	1,086	830	190	260	195
February	1,254	1,624	835	171	237	191
March	1,228	1,612	891	174	255	215
April	r1,199	r1,530	887	168	247	196
May	r1,362	r1,773	966	173	250	208
June	r1,217	1,579	916	182	247	206
July	1,472	1,914	986	199	264	239
August	1,407	1,840	973	196	272	234
September	1,419	1,825	916	182	262	222
Period	Gold (c) (Mine Production)		Refined Metal			
	'000 fine oz.	'000 fine oz.	Silver (d)	Copper (d)	Lead (d) (e)	Tin (d)
Year : 1938-39	1,621	9,455	17,483	232,988	3,262	69,825
1948-49	899	6,814	11,263	204,208	1,956	75,570
1954-55	1,080	7,626	30,400	235,353	2,032	100,459
1955-56	1,033	8,136	24,472	220,790	1,908	103,904
1956-57	1,063	8,620	35,353	240,371	1,736	106,523
Latest 6 Months, 1957	552	3,878	14,922	120,565	891	55,320
Same 6 Months, 1956	528	4,390	14,707	119,050	1,050	52,563
Latest 3 Months, 1957	278	1,492	7,051	62,090	509	29,647
Same 3 Months, 1956	269	2,097	8,885	66,274	561	27,419
Month, 1956 :						
September	91	810	(f)	20,831	162	8,785
October	87	771	(f)	21,363	173	9,052
November	96	683	(f)	20,547	107	8,776
December	83	677	(f)	19,838	146	9,365
1957 :						
January	84	823	1,366	18,732	107	9,077
February	81	449	3,555	17,118	161	8,152
March	89	734	3,498	18,024	99	9,030
April	91	702	3,288	17,188	89	8,962
May	87	729	2,734	21,253	190	9,229
June	96	955	r1,849	20,034	103	7,482
July	105	525	2,666	19,938	124	10,919
August	86	509	1,864	21,839	204	9,532
September	87	458	2,521	20,313	181	9,196

(a) Source : Joint Coal Board.

(b) Year ended 31st May.

(c) Source : State Departments of Mines.

(d) Source : Bureau of Mineral Resources and Australian Mines and Metals Assoc.

(e) Includes Lead content of Lead Bullion produced for export.

(f) Not available.

AUSTRALIAN PRODUCTION STATISTICS

Period	Coke Metal-lurgical '000 tons	Brown Coa. Briquettes '000 tons	Gas (a) Mill. cu. ft.	Electricity		
				Hydro Mill. kWh.	Thermal Mill. kWh.	Total Mill. kWh.
Year : 1938-39	1,165	400	21,472	n.a.	n.a.	4,688
1948-49	1,150	559	36,733	1,378	7,675	9,053
1954-55	2,047	631	43,465	2,007	13,165	15,172
1955-56	2,058	634	44,578	2,812	13,858	16,670
1956-57	2,263	618	46,535	3,110	r15,264	r18,374
Latest 6 Months, 1957	1,149	317	26,229	1,580	8,440	10,020
Same 6 Months, 1956	1,129	316	25,166	1,568	7,705	9,273
Latest 3 Months, 1957	583	157	14,030	830	4,379	5,209
Same 3 Months, 1956	572	156	13,258	781	4,026	4,807
Month, 1956 : September	187	54	4,077	259	1,241	1,500
October	198	56	3,959	299	1,239	1,538
November	191	52	3,679	315	1,171	1,486
December	188	32	3,421	279	1,115	1,394
1957 : January	180	53	3,279	231	r1,178	r1,409
February	173	54	3,158	207	r1,180	r1,387
March	195	55	3,584	248	1,295	1,543
April	187	54	3,629	246	1,256	1,502
May	192	53	4,313	252	1,441	1,693
June	187	53	4,257	252	1,364	1,616
July	196	51	4,965	285	1,532	1,817
August	197	51	4,708	254	1,511	1,765
September	190	55	4,357	291	1,336	1,627

Period	Building Materials						
	Clay Bricks	Cement Building Sheets (b)	Port-land Cement	Fibrous Plaster Sheets (c)	Roofing Tiles		Sawn Native Timber (d)
					Terra Cotta	Cement	
Mill.	Mill. sq. yds.	'000 tons	'000 sq. yds.	Mill.	Mill.	Mill. super ft.	
Year : 1938-39	721	9.5	868	7,605	39.7	4.5	717
1948-49	617	18.6	1,031	13,234	44.2	28.3	1,184
1954-55	839	28.1	1,920	17,784	63.9	53.7	1,449
1955-56	840	26.5	2,035	18,125	64.7	53.8	r1,450
1956-57	r806	24.4	2,236	r15,541	58.0	46.6	1,430
Latest 6 Months, 1957	441	13.1	1,191	8,256	31.2	26.1	694
Same 6 Months, 1956	410	13.3	1,080	8,326	31.9	24.5	696
Latest 3 Months, 1957	228	6.5	594	4,283	15.8	13.1	352
Same 3 Months, 1956	209	6.2	554	4,094	15.7	12.0	367
Month, 1956 : September	r66.3	2.16	177	r1,298	5.10	r3.89	125.3
October	r74.6	2.11	204	r1,409	5.52	4.34	139.5
November	r70.9	2.02	192	1,391	4.96	r3.72	141.5
December	r51.7	1.87	167	r1,018	3.85	r2.71	115.8
1957 : January	r50.2	1.29	152	1,014	3.36	2.88	92.3
February	r65.7	2.00	171	1,309	4.63	r3.90	113.3
March	r69.8	2.36	200	1,327	4.71	r3.97	112.4
April	r67.9	1.91	198	1,249	4.82	r4.07	107.3
May	77.7	2.39	204	1,436	5.55	r4.93	122.2
June	68.0	2.28	195	1,288	4.94	r4.06	119.1
July	r77.6	2.28	208	r1,441	5.51	4.51	114.4
August	r75.1	2.27	200	1,412	5.12	r4.47	118.7
September	74.9	2.09	186	1,430	5.21	4.07	

(a) Produced in gasworks.

(b) Selling square yards, except 1938-39 which is in standard square yards.

(c) From July, 1955 represents total production in all establishments and includes small quantities not previously recorded in some States.

(d) Source : Forestry and Timber Bureau.

AUSTRALIAN PRODUCTION STATISTICS

Period	Building Fittings						
	Bath Heaters			Sink	Wash Basins		Baths C.I.P.E.
	Electric	Solid Fuel	Gas	Heaters, Electric	C.I.P.E.	Earthen- ware	
'000	'000	'000	'000	'000	'000	'000	
Year : 1938-39	n.a.	n.a.	n.a.	n.a.	n.a.	n.a.	n.a.
1948-49	12.8	56.1	33.0	11.5	n.a.	n.a.	64.5
1954-55	17.9	41.2	27.6	17.1	130.4	22.9	117.4
1955-56	17.1	40.5	27.6	17.2	117.5	23.6	105.0
1956-57	14.7	r33.8	24.3	15.8	106.8	25.9	85.7
Latest 6 Months, 1957	7.3	18.3	13.1	8.5	53.3	17.8	43.1
Same 6 Months, 1956	8.4	19.7	13.8	8.9	59.1	13.3	49.0
Latest 3 Months, 1957	3.8	8.3	7.3	4.5	28.0	11.0	21.2
Same 3 Months, 1956	4.6	9.8	6.7	5.0	28.0	7.0	23.9
Month, 1956 : September	1.46	r2.56	2.04	1.48	9.57	2.20	6.34
October	1.39	r3.12	2.57	1.38	9.75	2.46	7.36
November	1.02	r2.29	2.51	1.42	9.69	2.41	7.51
December	1.13	r1.98	1.71	1.20	7.61	1.84	5.51
1957 : January	0.91	r1.94	1.35	0.91	6.51	1.47	5.09
February	1.05	r2.44	1.67	1.03	9.84	2.23	6.95
March	1.07	r2.27	2.06	0.95	10.09	1.74	7.45
April	0.90	r3.13	1.85	1.10	9.12	2.38	7.05
May	1.44	r3.92	2.10	1.84	9.80	2.32	8.83
June	1.25	r2.90	1.80	0.98	6.35	2.09	6.03
July	1.32	3.02	2.34	1.48	8.63	2.22	6.82
August	1.42	3.14	2.56	1.83	9.56	3.56	7.04
September	1.01	2.17	2.43	1.23	9.83	5.24	7.35

Period	Building Fittings					
	Pans, Pedestal, Earthenware	Coppers		Stoves-Domestic Cooking (a)		
		Gas	Electric	Solid Fuel	Gas	Electric
	'000	'000	'000	'000	'000	'000
Year : 1938-39	n.a.	n.a.	n.a.	54.5	46.7	8.8(b)
1948-49	n.a.	30.0	24.5	61.4	49.6	41.9(c)
1954-55	136.3	27.4	28.4	49.8	58.8	47.1
1955-56	133.3	27.5	27.1	47.3	57.1	47.8
1956-57	150.0	r23.0	r21.5	44.8	51.9	51.5
Latest 6 Months, 1957	89.5	11.1	11.7	24.7	26.1	26.4
Same 6 Months, 1956	73.2	12.3	11.7	23.9	25.7	24.9
Latest 3 Months, 1957	46.9	5.9	6.2	12.7	14.7	14.3
Same 3 Months, 1956	37.5	6.9	5.7	12.2	16.7	13.8
Month, 1956 : September	11.85	r2.05	r1.69	3.63	5.11	4.38
October	14.02	r2.39	r2.17	4.67	5.66	5.40
November	12.44	r1.97	r1.78	3.63	4.78	5.48
December	9.33	r1.23	r1.54	2.92	3.27	4.15
1957 : January	9.88	r1.44	r1.39	2.82	2.67	2.59
February	12.37	r1.88	r1.62	2.83	3.63	3.61
March	11.84	r1.85	r1.83	3.75	3.80	4.35
April	13.18	r1.76	r1.65	3.71	3.43	3.96
May	15.37	r1.93	r2.07	4.71	4.38	4.67
June	14.08	r1.57	r1.76	3.57	3.59	3.48
July	16.51	1.90	2.29	4.08	4.33	5.75
August	16.02	2.06	1.93	4.48	4.88	4.23
September	14.37	1.90	1.97	4.18	5.47	4.32

- (a) Includes Commercial Cooking Stoves in 1938-39.
 (b) Includes Stovettes, Cookers, etc.
 (c) Includes Portable Ranges.

AUSTRALIAN PRODUCTION STATISTICS

Period	Building Fittings					
	Sinks			Meters		
	Earthen-ware '000	C.I.P.E. '000	Stainless Steel '000	Electric (a) '000	Gas '000	Water '000
Year : 1938-39	n.a.	n.a.	n.a.	n.a.	44.2	25.0
1948-49	n.a.	n.a.	69.6	204.1	56.3	40.3
1954-55	2.55	7.4	187.0	290.6	36.2	68.7
1955-56	2.34	6.1	166.0	266.1	52.8	80.8
1956-57	3.33	1.7	157.1	r221.0	50.0	75.2
Latest 6 Months, 1957	1.73	n.a.	83.0	96.1	25.7	37.2
Same 6 Months, 1956	1.40	n.a.	78.9	133.9	27.6	40.0
Latest 3 Months, 1957	0.95	n.a.	42.8	49.4	11.9	16.6
Same 3 Months, 1956	0.78	n.a.	39.5	67.8	13.2	20.0
Month, 1956 : September	0.34	n.a.	12.8	r25.4	3.52	6.12
October	0.41	n.a.	14.5	r22.1	3.84	6.77
November	0.37	n.a.	14.2	r19.9	4.05	6.67
December	0.27	n.a.	10.1	r15.2	2.93	5.17
1957 : January	0.15	n.a.	10.3	14.2	3.68	4.62
February	0.36	n.a.	14.1	16.8	4.15	5.34
March	0.21	n.a.	14.1	18.2	4.38	6.03
April	0.25	n.a.	13.3	14.4	5.05	6.44
May	0.28	n.a.	15.1	16.0	4.42	8.07
June	0.25	n.a.	11.8	16.3	4.35	6.13
July	0.30	n.a.	13.5	16.5	3.46	3.75
August	0.30	n.a.	14.1	16.6	3.85	6.17
September	0.25	n.a.	15.2	16.3	4.60	6.64
Period	Chemicals					
	Acids			Super-phosphate (b)	Sulphate of Ammonia (c)	Refined Glycerine
	Sul-phuric '000 tons	Nitric Tons	Hydro-chloric Tons	'000 tons	'000 tons	'000 cwt.
Year : 1938-39	489	563	2,737	1,199	24.3	44.4
1948-49	585	3,292	3,110	1,423	53.2	64.9
1954-55	835	11,777	2,313	1,961	78.4	96.0
1955-56	896	14,216	2,376	2,126	75.3	93.1
1956-57	877	r15,533	2,509	1,975	109.1	95.4
Latest 6 Months, 1957	494	7,711	1,278	1,134	59.7	47.1
Same 6 Months, 1956	407	7,991	1,226	898	46.7	53.1
Latest 3 Months, 1957	241	3,681	708	529	32.8	25.3
Same 3 Months, 1956	191	4,198	636	384	27.1	25.8
Month, 1956 : September	66.9	1,198	225	119	9.96	9.71
October	69.1	1,662	232	162	9.15	8.09
November	63.3	1,009	204	129	9.69	6.44
December	60.5	r949	207	127	10.51	8.28
1957 : January	69.8	1,269	169	168	9.23	6.88
February	82.1	1,185	187	201	7.63	9.51
March	88.8	r1,231	304	200	8.86	8.70
April	85.8	1,443	207	192	9.08	7.60
May	87.5	1,313	170	224	9.11	7.08
June	78.9	r1,274	193	189	8.75	7.07
July	80.7	1,359	196	178	10.97	9.20
August	88.0	1,074	234	196	11.58	8.09
September	72.7	1,248	278	155	10.25	8.02

(a) Domestic Type.

(b) Source : Department of Primary Industry.

(c) Source : Nitrogen Fertilizers Pty. Ltd. for 1956-57 and later periods.

AUSTRALIAN PRODUCTION STATISTICS

Period	Soap				Soap Extracts and Powders		Abrasive Cleansers and Scourers (e)
	Household (a)	Toilet and Hand (b)	Industrial (c)	Other (d)	Household	Industrial	
	'000 cwt.	'000 cwt.	'000 cwt.	'000 cwt.	'000 cwt.	'000 cwt.	'000 cwt.
Year : 1938-39	735	132	(f)21	21	191		123
1948-49	711	283	99	109	610		124
1954-55	590	343	130	202	926	81	115
1955-56	588	328	141	212	823	88	105
1956-57	r551	320	r142	206	791	75	r77
Latest 6 Months, 1957	289	155	74	111	406	43	37
Same 6 Months, 1956	285	176	77	105	409	44	40
Latest 3 Months, 1957	153	76	36	59	210	23	19
Same 3 Months, 1956	133	86	37	50	200	20	20
Month, 1956 : September	50.8	27.6	r11.01	15.4	77	6.95	r5.67
October	43.4	25.4	r10.78	17.4	67	5.43	6.70
November	47.0	27.3	r10.76	18.8	73	5.13	r7.90
December	47.1	27.1	r11.24	15.4	75	7.42	r4.42
1957 : January	44.9	22.7	r10.32	16.6	47	4.96	r5.34
February	49.1	25.4	r12.33	17.4	70	6.06	r7.54
March	50.2	26.7	r11.99	18.1	63	5.81	r6.12
April	43.0	28.0	r13.07	16.9	73	6.45	r6.12
May	48.9	26.2	r11.63	18.3	65	7.32	r6.34
June	44.1	25.2	r13.28	17.4	58	6.62	r5.15
July	56.1	28.3	15.10	20.7	72	8.85	6.91
August	50.3	24.5	11.88	18.9	70	5.96	6.46
September	46.9	22.7	8.64	19.1	68	6.69	5.81

Period	Ready Mixed Paint and Enamels		Water Paint (incl. Kalsomine)		Lacquers, Nitro-Cellulose	Thinners	
	Architectural & Decorative	Industrial	Emulsion Types	Powder incl. Kalsomine		For	For
	'000 gal.	'000 gal.	'000 gal.	'000 lb.	'000 gallons	'000 gallons	'000 gallons
Year : 1938-39	2,690		10,758		576	671	
1948-49	5,413		19,663		830	1,250	
1954-55	9,739		32,044		1,476	1,842	373
1955-56	10,679		26,305		1,499	1,967	435
1956-57	r10,825		r25,929		1,455	1,956	458
Latest 6 Months, 1957	5,210		(g)		775	1,028	240
Same 6 Months, 1956	5,284		12,174		729	970	209
Latest 3 Months, 1957	2,819		(g)		393	515	129
Same 3 Months, 1956	2,570		5,940		352	461	105
Month, 1956 : September	885		r2,105		113	151	36.6
October	r1,044		r2,426		126	175	45.7
November	1,050		r2,279		123	176	42.5
December	899		r2,207		97	127	36.3
1957 : January	748		r1,851		101	141	33.7
February	944		r2,433		127	177	42.1
March	973		r2,320		146	184	40.9
April	700		r2,219		127	177	35.8
May	970		r2,219		143	194	38.6
June	721		r1,931		112	142	36.5
July	626	205	r152	389	128	170	44.7
August	705	225	166	306	131	173	46.4
September	827	231	167	192	134	172	37.8

(a) Includes Laundry Flakes and Chips. (b) Includes Shaving Soap and Shampoo.

(c) Includes Industrial Flakes and Chips. (d) Soft and Liquid, excludes Sand Soap.

(e) Includes Sandsoap. Excludes Synthetic Detergents. (f) Woolscouring Soap only.

(g) Comparable figures not available.

AUSTRALIAN PRODUCTION STATISTICS

Period	Domestic Refrigerators (a)	Domestic Electrical Appliances					Tele- vision Sets
		Clothes Washing Machines	Vacuum Cleaners	Radios		Radio- grams	
				Portable	Other(b)		
	'000	'000	'000	'000	'000	'000	'000
Year : 1933-39	29.5	n.a.	n.a.		163.8		..
1943-49	145.6	6.5	65.7		294.1		..
1954-55	280.6	166.3	60.0	103.4	256.2	96.4	..
1955-56	247.4	165.6	55.7	91.8	262.5	103.7	2.64
1956-57	r192.9	144.0	84.2	82.1	199.7	86.8	126.5
Latest 6 Months, 1957	72.3	34.5	49.1	35.1	89.2	55.0	117.7
Same 6 Months, 1956	87.1	76.2	29.0	35.5	112.7	50.1	n.a.
Latest 3 Months, 1957	40.4	43.2	22.2	16.2	43.0	29.6	68.1
Same 3 Months, 1956	49.7	34.3	14.7	15.3	55.2	24.9	13.8
Months, 1956: September	19.3	10.58	4.30	4.36	18.3	6.31	6.25
October	26.5	10.57	5.17	7.92	20.7	5.49	9.31
November	23.7	12.29	8.63	9.51	20.0	6.05	12.88
December	18.9	9.84	6.39	11.35	14.9	5.42	10.45
1957: January	16.1	8.55	5.32	5.65	9.9	4.38	7.33
February	r13.1	12.98	7.86	5.88	16.0	7.49	10.86
March	13.0	14.07	9.27	7.04	16.7	7.76	12.37
April	10.6	12.66	8.24	5.53	16.4	7.38	13.26
May	11.4	15.37	9.87	8.27	18.3	9.95	18.79
June	9.9	12.79	8.73	5.15	11.5	7.99	17.54
July	11.4	14.38	7.52	5.83	13.1	10.70	22.06
August	12.7	14.29	6.58	5.14	14.9	9.98	23.49
September	16.3	14.48	8.12	5.19	15.0	8.96	22.56

Period	Domestic Electrical Appliances					
	Irons (Hand)	Fans (c)	Toasters	Hot Water Jugs	Food Mixers (d)	Radiators and Elec- tric Fires
Year : 1933-39	n.a.	n.a.	n.a.	n.a.	n.a.	n.a.
1943-49	209.0	59.9	148.3	81.2	n.a.	94.8
1954-55	278.8	63.3	156.0	156.7	218.9	165.8
1955-56	327.5	127.7	173.5	148.1	162.0	226.8
1956-57	354.9	135.9	177.2	146.2	129.3	187.8
Latest 6 Months, 1957	183.6	32.0	93.3	74.4	81.7	140.8
Same 6 Months, 1956	173.4	76.7	86.8	67.8	59.0	126.4
Latest 3 Months, 1957	92.2	18.0	47.1	35.8	45.2	37.0
Same 3 Months, 1956	99.9	49.6	45.1	32.9	25.6	29.3
Month, 1956 : September	32.4	19.35	13.94	8.99	7.8	3.67
October	33.9	21.01	16.22	13.79	10.3	4.66
November	37.8	16.94	13.68	15.17	16.1	3.94
December	23.0	10.29	13.70	10.83	10.8	3.02
1957 : January	14.0	8.87	10.34	9.84	6.8	9.14
February	23.2	8.18	16.88	11.97	11.5	12.75
March	31.8	6.94	15.05	13.23	11.7	21.18
April	29.5	4.00	17.03	12.33	12.6	32.84
May	32.7	5.19	16.68	14.12	12.8	40.30
June	29.2	4.83	12.55	12.07	11.1	30.62
July	36.9	6.06	17.43	9.81	16.1	r16.20
August	29.1	5.74	14.80	13.46	14.1	12.22
September	26.2	6.17	14.85	12.56	15.0	8.61

(a) All types up to and including 12 cubic feet capacity, but excludes Freezers for Quick Frozen Articles.

(b) Includes Car Radios.

(c) Includes Industrial.

(d) Includes "Liquidizer" types.

AUSTRALIAN PRODUCTION STATISTICS

Period	Electric Motors (a), Horsepower Group					
	Under 1	1 and Under 2½	2½ and Under 5	5 and Under 10	10 and over	Total
	Number	Number	Number	Number	Number	Number
Year : 1948-49	245,249	26,813	14,421	7,853	4,518	298,854
1954-55	1,122,653	31,602	13,220	8,066	7,525	1,183,066
1955-56	1,055,236	29,415	12,166	10,752	9,271	1,116,840
1956-57	r930,244	29,296	10,073	8,261	8,159	r986,033
Latest 6 Months, 1957	509,949	15,693	5,194	4,519	4,294	539,649
Same 6 Months, 1956	441,333	14,465	5,745	4,790	4,651	470,984
Latest 3 Months, 1957	259,566	7,705	2,614	2,365	2,180	274,430
Same 3 Months, 1956	213,564	7,681	2,720	1,992	2,281	228,238
Month, 1956 : September	r72,247	2,345	539	675	628	r76,434
October	r81,799	2,218	916	744	724	r86,401
November	r99,903	3,031	838	655	701	r105,128
December	r65,359	2,017	597	632	515	r69,620
1957 : January	r56,839	1,458	616	418	498	r59,829
February	r79,409	2,066	1,031	731	653	r83,890
March	r82,488	2,837	775	935	673	r87,708
April	r73,669	2,257	811	862	643	r78,242
May	r96,408	3,547	923	738	806	r102,427
June	r80,306	2,184	841	554	665	r84,550
July	r92,204	2,124	808	1,081	725	r96,942
August	83,845	3,223	948	576	701	89,293
September	83,517	2,358	858	708	754	88,195
Period	Internal Combustion Engines (a) (b)				Pedal Cycles - Made or Ass-embled	Perambul-ators (Includes Pushers and Strollers)
	Petrol and Other Light Oils		Diesel Other than Marine			
	Marine	Other than Marine	Other than Marine	Marine		
	Total	2 H.P. and under 6 H.P.	Total	Total		
Year : 1938-39	2,957		2,889		n.a.	68.2
1948-49	3,081		26,194		91,514	106.7
1954-55	1,380	12,648	45,608	2,667	91,125	155.4
1955-56	1,246	11,400	100,585	2,757	89,033	160.4
1956-57	1,572	r80,028	r180,438	2,696	74,213	139.7
Latest 6 Months, 1957	850	24,629	59,132	1,259	32,390	65.5
Same 6 Months, 1956	599	13,726	72,506	1,329	33,747	71.9
Latest 3 Months, 1957	457	10,569	33,027	702	17,487	31.8
Same 3 Months, 1956	353	11,176	41,421	782	16,191	28.0
Month, 1956 : September	112	r5,629	r15,292	292	5,723	10.7
October	69	r9,993	r18,517	300	6,921	13.1
November	130	r11,154	r23,034	190	8,016	15.0
December	180	r7,146	r14,883	202	10,486	11.9
1957 : January	153	r7,697	r17,827	201	4,233	12.0
February	171	r8,701	r19,257	287	6,012	13.6
March	123	r10,101	r19,394	177	6,451	12.5
April	188	r4,822	r9,813	162	4,993	13.1
May	154	r4,474	r7,783	184	5,351	12.6
June	51	r4,764	r8,509	211	4,559	8.0
July	125	5,028	9,582	140	5,412	10.8
August	185	2,070	10,039	290	5,876	11.3
September	147	3,471	13,406	272	6,199	9.7

(a) Includes those made and incorporated by manufacturers in their own products.

(b) Excludes Motor Car, Motor Cycle, Truck, Tractor and Aero.

AUSTRALIAN PRODUCTION STATISTICS

Period	Motor Vehicle Chassis					
	Car (a)			Commercial (c)		
	Chassis Assembled	Cost of Components (b)		Chassis Assembled	Cost of Components (b)	
	Number	Imported	Australian	Number	Imported	Australian
	£'000	£'000		£'000	£'000	
Year : 1938-39	n.a.	n.a.	n.a.	n.a.	n.a.	n.a.
1948-49	n.a.	n.a.	n.a.	n.a.	n.a.	n.a.
1954-55	183,540	39,499	30,464	17,065	10,714	5,533
1955-56	200,333	41,353	36,977	21,295	13,409	7,067
1956-57	177,328	34,937	36,964	15,527	11,326	5,958
Latest 6 Months, 1957	101,431	18,326	21,328	6,962	5,159	2,693
Same 6 Months, 1956	93,033	18,581	18,065	10,680	7,485	3,895
Latest 3 Months, 1957	54,129	9,967	11,496	3,639	2,664	1,394
Same 3 Months, 1956	43,015	8,227	8,850	4,680	3,380	1,778
Month, 1956 : September	13,555	2,691	2,686	1,482	1,102	591
October	16,043	3,193	3,296	1,575	1,142	620
November	16,983	3,396	3,595	1,345	1,010	505
December	11,815	2,832	2,159	1,201	867	457
1957 : January	11,843	2,443	2,640	966	696	373
February	15,398	3,032	3,387	1,276	872	486
March	15,429	2,955	3,205	1,161	864	440
April	13,842	2,539	2,947	1,104	770	448
May	17,829	3,378	3,647	1,163	913	449
June	15,631	2,942	3,238	1,056	812	402
July	18,628	3,416	3,986	1,655	1,156	543
August	17,719	3,142	3,877	814	667	323
September	17,782	3,409	3,633	1,170	841	528

Period	Motor Bodies				Tyres (Pneum.) Motor (d)	Inner Tubes Motor (d)
	Made built or assembled wholly or mainly from Aust. made panels etc.		Built or assembled wholly or mainly from panels imported from overseas			
	Cars (Sedans only)	Utilities	Cars (Sedans only)	Utilities		
	Number	Number	Number	Number		
Year : 1938-39	50,907	8,578	n.a.	n.a.	'000 (e) 2,198	'000 (e) 1,834
1948-49	31,416	9,413	n.a.	n.a.	2,721	1,535
1954-55	72,018	26,940	55,858		3,515	3,095
1955-56	82,080	24,363	71,075	11,062	3,637	2,384
1956-57	77,556	21,691	56,194	7,076	3,405	2,016
Latest 6 Months, 1957	44,834	12,950	28,627	3,332	1,816	1,155
Same 6 Months, 1956	36,744	10,695	33,539	4,693	1,854	1,093
Latest 3 Months, 1957	24,658	6,824	14,945	2,100	942	589
Same 3 Months, 1956	18,201	5,198	14,150	2,123	934	545
Month, 1956 : September	5,756	1,632	4,535	679	284	162
October	6,854	2,073	5,436	671	304	173
November	7,214	2,061	5,271	628	311	165
December	5,344	871	4,180	212	211	107
1957 : January	5,053	967	3,994	495	205	109
February	6,693	2,271	4,814	645	292	172
March	7,971	2,124	4,915	570	274	181
April	6,248	1,855	4,024	462	281	180
May	7,486	2,312	5,139	602	335	216
June	6,492	1,959	4,519	668	258	170
July	8,425	2,280	4,940	737	335	219
August	8,230	2,170	4,795	818	277	169
September	8,003	2,374	5,210	545	330	201

(a) Includes Station Wagons, Estate Cars, Utilities, Panel Vans and similar commercial vehicles with a payload of under one ton.

(b) Excludes costs of assembly (such as labour, power, etc.)

(c) Payload one ton, and over.

(d) Motor Car, Motor Cycle, Tractor, Truck, Aero and Omnibus. Source : Department of Supply.

(e) Includes cycle.

AUSTRALIAN PRODUCTION STATISTICS

Period	Cotton Yarn				Cotton Sewing Thread (c)	Towels
	Weaving (including Condenser)	Knitting (a)	Other (b)	Total		
	'000 lb.	'000 lb.	'000 lb.	'000 lb.	'000 lb.	'000 doz.
Year : 1938-39	n.a.	n.a.	n.a.	11,692	n.a.	476(d)
1948-49	n.a.	n.a.	n.a.	26,146	595	389
1954-55	27,316	7,284	6,893	41,493	1,089	666
1955-56	30,604	6,714	3,225	40,543	995	768
1956-57	33,332	6,628	2,697	42,657	1,093	742
Latest 6 Months, 1957	18,190	3,432	1,519	23,141	583	439
Same 6 Months, 1956	16,413	3,593	1,491	21,497	533	384
Latest 3 Months, 1957	9,328	1,761	802	11,891	287	231
Same 3 Months, 1956	8,499	1,888	768	11,155	268	188
Month, 1956 : September	2,725	560	236	3,521	85.4	61.1
October	3,136	657	236	4,029	99.4	63.6
November	2,821	507	233	3,561	96.1	66.7
December	2,044	388	122	2,554	66.6	46.4
1957 : January	2,310	456	173	2,939	63.8	37.2
February	2,316	519	236	3,571	98.0	59.4
March	2,345	541	211	3,597	105.5	72.1
April	2,753	496	208	3,457	95.4	56.3
May	3,255	605	274	4,134	115.7	81.5
June	2,854	570	235	3,659	85.4	70.6
July	3,380	629	312	4,321	(e) 104.3	77.6
August	2,976	572	288	3,836	(e) 90.3	76.7
September	2,972	560	202	3,734	(e) 91.4	76.3

Broad Woven Cotton Cloth (i.e. over 12 inches wide)

Period	Towelling (incl. Baby Napkins)	Duck Canvas, etc. (f)	Drills, Jeans, etc.	Cotton Tweed	Denim	Other Piece Goods (g)	Total
	'000 sq. yds.	'000 sq. yds.	'000 sq. yds.	'000 sq. yds.	'000 sq. yds.	'000 sq. yds.	'000 sq. yds.
Year : 1938-39	n.a.	n.a.	n.a.	3,560	n.a.	1,699	5,998
1948-49	465	7,419	5,172	1,756	90	10,500	25,405
1954-55	1,385	10,942	10,773	1,937	1,458	7,929	34,424
1955-56	1,490	11,963	12,845	1,945	2,004	9,904	40,151
1956-57	1,942	11,171	14,928	2,636	2,300	15,182	48,209
Latest 6 Months, 1957	975	5,658	8,319	1,314	1,209	7,958	25,433
Same 6 Months, 1956	843	6,141	7,670	1,359	962	6,587	23,562
Latest 3 Months, 1957	452	2,739	4,202	552	527	4,105	12,577
Same 3 Months, 1956	484	2,945	3,707	740	513	3,970	12,359
Month, 1956 : September	171	931	1,169	218	170	1,343	4,002
October	183	1,134	1,317	179	215	1,431	4,459
November	191	1,015	1,137	203	178	1,405	4,129
December	123	699	891	152	131	979	2,975
1957 : January	111	718	1,051	200	149	1,010	3,239
February	162	871	1,354	225	212	1,352	4,176
March	165	870	1,354	225	220	1,183	4,017
April	170	863	1,390	258	213	1,141	4,045
May	201	1,144	1,413	252	268	1,399	4,677
June	152	907	1,314	252	196	1,313	4,134
July	r158	1,047	1,470	206	234	r1,478	r4,593
August	r156	865	1,391	191	137	r1,345	r4,085
September	138	827	1,341	155	156	1,232	3,899

(a) Includes Hand Knitting. (b) Includes Cordage Yarn and Tyre Cord Yarn.
(c) Counts higher than 12's. (d) Includes some Towelling. (e) Over 13's instead of over 12's as previously collected. (f) Includes Flax Canvas. (g) Includes Sheetting, Calico, Shirting, Dress Fabric, Upholstery Fabrics and Other close weave Piece Goods, but excludes open weave Fabrics, such as Tyre Cord Fabric.

AUSTRALIAN PRODUCTION STATISTICS

Period	Wool and Wool Textiles					
	Scoured & Carbonized Wool (a)	Wool Tops (a)	Yarn (a)		Woven Cloth (b) (c)	Blankets (Incl. Cot.)
			Worsted	Woollen		
	Mill. lb.	Mill. lb.	Mill. lb.	Mill. lb.	Mill. sq. yds.	'000
Year : 1938-39	105	25.2	18.1	14.4	31.8	1,147
1948-49	162	36.0	28.3	22.4	41.4	1,378
1954-55	136	30.9	22.9	19.8	28.9	1,532
1955-56	145	35.6	23.2	20.0	27.9	1,554
1956-57	164	42.2	25.5	22.8	32.8	1,647
Latest 6 Months, 1957	86	22.1	12.6	12.7	17.2	976
Same 6 Months, 1956	80	21.5	13.1	11.0	15.1	919
Latest 3 Months, 1957	41	11.2	6.0	6.5	8.7	502
Same 3 Months, 1956	39	11.1	6.5	5.6	8.0	438
Month, 1956 : September	11.9	3.66	2.11	1.90	2.71	129
October	13.2	3.73	2.42	2.14	3.20	147
November	13.8	3.84	2.20	1.99	2.92	120
December	12.3	2.50	1.63	1.39	2.05	93
1957 : January	11.9	2.67	1.57	1.40	2.20	99
February	14.7	3.91	2.34	1.99	2.92	136
March	14.6	3.57	2.27	2.05	2.96	141
April	13.9	3.20	2.16	1.91	2.73	149
May	16.0	4.01	2.45	2.25	3.11	164
June	15.3	3.70	1.98	2.01	2.66	161
July	15.5	3.88	2.13	2.22	2.99	179
August	13.2	3.61	1.96	2.12	2.82	162
September	12.5	3.71	1.88	2.17	2.93	161
Period	Rayon Woven Cloth (d)		Foundation Garments			
	Pure Rayon	Rayon Mixtures (e)	Corsets		Corselets	Brassieres
			Roll-on Girdles	Other (f)		
	'000 sq. yds.	'000 sq. yds.	'000 dozen	'000 dozen	'000 dozen	'000 dozen
Year : 1938-39	n.a.	n.a.	153.5		19.0	222.2
1948-49	5,706	961	125.7		8.3	264.8
1954-55	15,106	3,226	39.4	95.1	6.7	404.9
1955-56	15,695	3,971	46.1	103.8	6.9	421.1
1956-57	22,538	1,563	48.2	89.5	7.5	431.9
Latest 6 Months, 1957	13,610	(g)	26.5	46.7	3.8	224.7
Same 6 Months, 1956	9,281	(g)	25.7	53.5	4.3	215.9
Latest 3 Months, 1957	6,764	(g)	15.1	24.9	2.0	113.4
Same 3 Months, 1956	4,739	(g)	14.6	25.9	2.2	106.7
Month, 1956 : September	1,576	109	4.68	7.31	0.57	32.1
October	1,714	178	5.18	8.28	0.66	38.3
November	1,765	136	4.54	8.23	0.47	36.8
December	1,252	92	3.47	5.63	0.48	29.0
1957 : January	1,761	116	2.42	4.47	0.48	34.8
February	2,017	152	3.21	7.52	0.73	37.6
March	2,443	179	3.41	7.66	0.65	37.3
April	2,053	182	2.49	6.59	0.48	33.7
May	2,297	118	4.45	7.87	0.66	43.9
June	2,496	140	4.46	7.33	0.73	33.7
July	2,430	117	4.69	8.03	0.69	38.3
August	2,169	84	5.32	8.48	0.68	36.0
September	2,165	84	5.04	8.39	0.58	39.1

(a) Includes that further processed in the producing mills. (b) Wool in admixture with rayon, excluded prior to July, 1956. (c) Over 12 ins. wide. (d) Broad woven cloth over 12 ins. wide, excludes open weave fabrics such as Tyre Cord Fabric. (e) Includes rayon mixed with any other fibre up to June, 1956. Thereafter represents mixtures in which Rayon predominates. (f) Includes Surgical Corsets and Belts. (g) Not comparable - see Note (e).

AUSTRALIAN PRODUCTION STATISTICS

Period	Footwear (not Rubber)			Gloves (a)		Hats
	Boots and Shoes	Sandals	Slippers	Dress	Work	Fur and Wool Felt (b)
	'000 pairs	'000 pairs	'000 pairs	Dozen pairs	Dozen pairs	'000 dozen
Year : 1938-39				n.a.	61,539	360.0
1943-49	13,967		7,704	8,832	157,230	334.6
1954-55	17,901	1,980	7,324	65,203	269,408	127.2
1955-56	18,006	1,809	7,977	56,150	293,874	114.9
1956-57	19,282	1,952	7,852	73,955	264,789	110.3
Latest 6 Months, 1957	10,191	974	4,103	43,617	137,415	54.5
Same 6 Months, 1956	9,932	978	4,066	30,869	133,923	46.5
Latest 3 Months, 1957	5,178	719	1,773	22,505	70,314	21.3
Same 3 Months, 1956	5,176	753	1,829	16,759	70,975	20.0
Month, 1956 : September	1,668	289	675	5,829	23,548	7.1
October	1,878	308	738	6,198	27,979	8.9
November	1,712	285	663	7,688	19,981	9.6
December	1,208	186	565	4,697	17,081	7.0
1957 : January	1,088	68	404	3,500	17,300	9.4
February	1,547	53	635	6,859	22,185	10.6
March	1,659	44	669	7,142	22,187	11.5
April	1,601	48	751	6,590	20,679	12.4
May	1,849	84	828	7,840	25,400	11.1
June	1,563	123	751	6,682	21,022	9.7
July	1,756	193	401	6,932	24,620	8.3
August	1,710	246	673	8,087	23,183	6.5
September	1,712	280	699	7,486	22,511	6.5

HOSIERY (c) - '000 dozen pairs

Period	Women's Maids' and Girls'	Men's Youths' and Boys'	Anklets (all Sizes (d) and Infants' and Babywear	Total
	Fully Fash. and Circ.			
Year : 1954-55	2,422	1,664	1,127	5,213
1955-56	2,304	1,560	1,063	4,927

NEW SERIES - Dissection not comparable with earlier figures

Period	Women's		Men's	Children's (Sizes 3-10)	Infants' (Sizes 0-3)	Total
	Full Fash. and Circ.	Anklets				
Year 1956-57	2,560	274	1,447	800	111	5,192
Latest 6 Months, 1957	(e)	(e)	(e)	(e)	(e)	2,558
Same 6 Months, 1956	(e)	(e)	(e)	(e)	(e)	2,682
Latest 3 Months, 1957	593	84	386	193	25.9	1,281
Same 3 Months, 1956	685	61	391	224	33.4	1,393
Month, 1956 : September	222	20.5	133	71.7	10.5	458
October	249	25.8	150	76.0	12.0	513
November	236	23.7	134	70.3	10.8	475
December	170	18.4	91	55.0	7.7	342
1957 : January	156	17.3	79	45.8	5.5	304
February	217	25.7	117	70.7	8.3	439
March	221	26.9	123	70.3	7.5	449
April	198	24.3	117	61.3	8.1	409
May	227	24.6	131	69.1	8.8	460
June	201	25.1	114	59.0	8.8	408
July	217	30.3	127	65.0	10.	449
August	200	25.5	131	63.9	7.9	429
September	176	28.1	128	63.6	7.9	403

(a) Other than Rubber. (b) Includes Hoods and Capelins. (c) From July, 1956 the dissection has been collected on a different basis - see separate heading below. (d) Includes Women's, Maids' and Girls'. (e) Comparable figures not available - see note (c).

AUSTRALIAN PRODUCTION STATISTICS

Period	Men's, Youths' and Boys' Clothing (Civilian Day Wear)						
	Suits			Trousers		Sports Coats (incl. Blazers)	
	Men's and Youths'		Boys'	Men's and Youths'		Men's & Youths'	Boys'
	3 Piece	2 Piece		Sports	Work		
	'000	'000	'000	'000	'000	'000	
Year : 1949-50	403	625	169	2,836	1,495	803	123
1954-55	88	648	106	2,443	1,868	656	88
1955-56	62	695	88	2,681	1,875	631	80
1956-57	45	659	92	2,570	2,073	616	81
Latest 6 Months, 1957	20	329	37	1,271	1,048	298	41
Same 6 Months, 1956	27	340	49	1,375	1,120	339	43
Latest 3 Months, 1957	11	179	18	662	520	171	16
Same 3 Months, 1956	14	181	27	698	564	187	18
Month, 1956 : September	4.9	59.3	7.7	223	178	64.3	5.5
October	4.7	67.0	7.6	252	198	70.2	6.6
November	4.8	67.7	9.6	244	174	65.2	4.9
December	3.5	56.7	9.5	191	129	46.4	6.6
1957 : January	2.0	32.7	5.8	136	105	25.4	4.4
February	3.5	48.7	7.6	227	176	48.6	7.7
March	3.0	55.3	6.2	213	200	46.0	7.4
April	2.7	46.0	5.1	193	174	36.1	7.3
May	3.3	56.3	8.7	224	197	48.0	9.7
June	3.1	47.9	5.7	192	157	43.1	8.1
July	4.9	54.7	6.6	215	173	52.3	6.0
August	3.0	64.4	6.3	219	176	55.9	4.8
September	3.4	59.8	4.9	228	171	62.3	5.2

Period	Men's, Youths' and Boys' Clothing (Civilian Day Wear) (Cont'd)						
	Dust and Working Coats		Overalls		Raincoats and Overcoats		Jodhpurs and Riding Breeches
	Short Length	Full Length	Men's and Youths'	Boys'	Men's and Youths'	Boys'	Men's Youths' & Boys'
	'000	'000	'000	'000	'000	'000	
Year : 1949-50	126		n.a.	n.a.	n.a.	n.a.	n.a.
1954-55	77	184	1,187	458	236	219	139
1955-56	101	169	1,286	354	219	184	164
1956-57	61	164	1,275	317	210	192	168
Latest 6 Months, 1957	34	91	731	136	114	80	91
Same 6 Months, 1956	41	89	680	151	124	84	99
Latest 3 Months, 1957	17	49	394	43	33	24	17
Same 3 Months, 1956	15	43	343	50	38	30	26
Month, 1956 : September	4.7	14.5	109	15.7	7.7	9.5	6.0
October	6.4	18.9	120	14.8	6.0	12.5	4.4
November	4.9	15.1	101	35.0	8.2	13.0	6.4
December	3.4	11.9	90	25.4	9.6	16.2	2.9
1957 : January	3.3	7.8	73	18.0	13.8	15.3	9.0
February	5.9	14.8	105	34.8	26.3	23.7	20.6
March	5.1	11.1	107	45.9	27.9	25.5	25.4
April	4.7	14.4	107	34.0	28.9	22.8	23.3
May	5.9	14.0	120	34.0	31.5	21.5	29.0
June	6.5	13.2	110	24.2	20.0	11.9	21.0
July	4.3	16.7	126	21.5	12.2	9.8	7.0
August	6.0	16.0	131	11.4	12.0	6.0	5.6
September	6.6	16.2	137	10.5	8.9	7.9	4.7

AUSTRALIAN PRODUCTION STATISTICS

Period	Underwear (a)		Cardigans, Pullovers and Similar Garments (b)		Bathing Suits and Trunks (a)	Shorts	
	Men's, Youths' and Boys'	Women's, Maids' and Girls'	Men's and Boys'	Women's and Girls'	Men's, Boys' and Women's and Girls'	Swim Youths' and Boys'	Leisure, Work and Walk (incl. Knickers)
	'000 dozen	'000 dozen	'000 dozen	'000 dozen	'000 dozen	'000 dozen	'000 dozen
Year : 1938-39	2,750		342		79(c)	n.a.	n.a.
1943-49	3,168		569		107		n.a.
1954-55	1,435	2,825	346	604	113		432
1955-56	1,564	2,814	338	625	121		416
1956-57	1,658	2,909	367	666	122		402
Latest 6 Months, 1957	872	1,412	180	380	79		193
Same 6 Months, 1956	810	1,458	178	318	70		196
Latest 3 Months, 1957	478	736	74	190	52		123
Same 3 Months, 1956	429	763	77	153	46		118
Month, 1956 : September	143	241	23.7	50.1	15.6	3.8	39.1
October	171	298	32.1	57.0	15.6	4.8	47.5
November	156	280	32.4	52.7	13.3	4.2	45.8
December	117	221	23.4	41.7	7.9	1.3	34.9
1957 : January	101	173	25.2	42.7	2.5	0.6	19.7
February	146	261	33.3	61.6	3.6	1.3	28.5
March	142	247	37.2	67.5	5.6	1.3	23.1
April	121	221	34.4	66.0	6.9	1.1	19.8
May	148	243	40.0	67.0	9.5	3.8	23.1
June	125	212	31.8	57.2	10.8	2.8	20.0
July	151	252	27.1	57.8	15.6	4.4	31.8
August	165	243	23.4	64.6	17.3	4.6	36.5
September	162	241	23.5	67.3	18.8	5.4	39.8

Period	Shirts (Men's and Boys')	Pyjama Suits (Men's and Boys')	Hides and Skins used in Tanneries		
	'000 dozen	'000 dozen	Cattle Hides	Calf Skins	Sheepskins, incl. Pelts
	'000 dozen	'000 dozen	'000	'000	'000
Year : 1938-39	675(d)	200	1,600	1,208	4,301
1943-49	856(d)	219	2,435	1,306	4,060
1954-55	1,411	340	2,800	1,448	3,489
1955-56	1,310	280	2,568	1,131	3,454
1956-57	1,415	281	2,518	1,099	3,878
Latest 6 Months, 1957	797	153	1,427	637	1,472
Same 6 Months, 1956	711	149	1,352	577	1,668
Latest 3 Months, 1957	466	69	734	353	772
Same 3 Months, 1956	414	68	657	322	842
Month, 1956 : September	139	21.2	200.2	116.4	260.1
October	166	22.5	218.7	100.6	278.5
November	146	21.4	208.6	100.3	250.4
December	102	15.0	127.4	46.5	154.9
1957 : January	59	15.1	178.8	67.4	177.9
February	100	27.8	210.1	88.2	243.5
March	96	27.3	225.3	89.7	230.1
April	99	28.8	208.7	80.8	221.0
May	122	33.6	257.2	103.1	247.4
June	110	22.3	226.5	100.1	232.0
July	155	20.8	265.3	111.6	269.3
August	153	24.3	236.5	138.0	273.5
September	158	23.4	232.4	103.7	229.1

(a) Knitted or made from knitted or woven fabric. (b) Knitted only. Revised to include additional cardigan type garments such as Knitted Jackets, etc. (c) Knitted only. (d) Excludes Knitted.

AUSTRALIAN PRODUCTION STATISTICS

Period	Beef and Veal	Lamb	Mutton	Pork	Bacon and Ham (cured weight) (a)	Total (in terms of Fresh Meat)	Canned Meat (b)
	'000 tons	'000 tons	'000 tons	'000 tons	'000 tons	'000 tons	tons
Year : 1938-39	559	115	206	37.0	33.2	996	14,389
1943-49	577	139	181	37.2	41.6	992	44,976
1954-55	720	148	240	47.2	38.4	1,207	73,836
1955-56	751	146	234	42.9	37.5	1,225	70,522
1956-57	804	139	218	41.0	35.2	1,250	67,963
Latest 6 Months, 1957	451	59	110	21.3	16.9	664	43,122
Same 6 Months, 1956	384	51	102	20.4	17.3	581	33,539
Latest 3 Months, 1957	236	28	52	10.7	8.5	338	23,046
Same 3 Months, 1956	212	26	49	9.9	8.1	308	16,513
Month, 1956 :	70.0	9.43	16.3	3.15	2.75	102.6	5,165
August	65.7	11.77	16.1	3.04	2.44	100.0	4,552
September	64.7	14.77	17.9	3.38	3.21	105.2	4,485
October	66.6	15.55	18.9	3.49	3.90	109.9	5,168
November	58.1	16.20	17.9	4.33	4.37	102.6	5,220
December	54.4	11.81	19.4	2.94	2.33	91.8	4,320
1957 :	58.6	9.91	19.4	3.33	2.39	94.4	5,630
January	68.1	10.21	19.4	3.60	2.55	104.8	6,865
February	63.2	9.30	18.0	3.24	2.95	97.8	5,585
March	83.5	11.67	20.1	3.70	2.92	122.9	7,626
April	81.4	9.96	18.4	3.51	2.69	117.0	8,061
May	81.6	8.89	17.4	3.54	2.96	115.4	7,729
June	73.2	8.82	16.5	3.66	2.79	106.0	7,256
July							
August							

Period	Wheat Products			Oatmeal and Rolled Oats (c)	Starch Edible (d)	Malt (all types)
	Flour	Bran	Pollard	'000 tons	'000 tons	'000 bushells
	- Thousand short tons -					
Year : 1938-39	1,373	289	284	15.2	n.a.	3,733
1943-49	1,679	319	355	23.1	280	5,150
1954-55	1,553	272	315	16.1	358	7,665
1955-56	1,571	278	333	18.3	392	7,928
1956-57	1,658	277	354	15.4	466	8,006
Latest 6 Months, 1957	782	127	166	10.1	238	4,278
Same 6 Months, 1956	846	143	177	10.4	233	4,021
Latest 3 Months, 1957	402	65	86	3.4	124	2,158
Same 3 Months, 1956	432	73	91	3.7	127	2,021
Month, 1956 :	148	25.3	30.8	0.83	42.3	669
September	144	24.1	31.1	0.82	41.7	704
October	146	24.6	31.7	0.70	44.0	695
November	142	23.9	31.3	0.41	32.0	550
December	140	23.5	30.0	0.85	25.4	615
1957 :	135	22.7	28.6	0.84	38.3	584
January	139	23.1	29.1	1.42	43.2	717
February	116	19.0	24.5	2.22	35.8	716
March	137	22.1	28.9	2.80	39.3	713
April	127	20.8	27.2	1.68	38.3	691
May	139	22.1	29.9	1.57	44.2	737
June	140	22.4	29.5	1.11	44.0	715
July	123	20.1	26.1	0.75	35.5	706
August						
September						

(a) From July, 1951, pressed and canned Bacon and Ham have been converted to bone-in weight.

(b) Source : Australian Meat Board. Excludes Canned Rabbit and Poultry.

(c) Excludes that for Stock Food.

(d) Cornflour and Edible Starch from Wheat.

AUSTRALIAN PRODUCTION STATISTICS

Period	Biscuits (a)	Refined Sugar (b)	Confectionery		Canned Fish (c)	Margarine	
			Chocolate basis	Other		Table	Other
	Mill. lb.	'000 tons	Mill. lb.	Mill. lb.	'000 lb.	Tons	Tons
Year : 1938-39	73.7	339	43.5	58.1	603	3,325	13,938
1948-49	107.1	428	67.6	69.9	10,386	8,529	20,789
1954-55	150.8	482	57.0	81.5	6,646	9,809	21,951
1955-56	158.6	483	62.4	83.1	6,008	11,853	19,394
1956-57	161.8	479	68.8	88.2	7,920	16,363	19,964
Latest 6 Months, 1957	85.3	243	38.6	45.4	3,851	8,763	11,451
Same 6 Months, 1956	81.3	236	37.0	43.9	2,541	8,274	10,919
Latest 3 Months, 1957	43.7	126	17.5	24.2	1,158	4,346	5,752
Same 3 Months, 1956	41.3	119	18.0	22.9	1,002	4,304	5,472
Month, 1956 : September	12.8	41.3	5.22	7.42	334	1,219	1,746
October	14.1	44.4	5.56	8.97	248	1,282	1,561
November	15.1	42.8	4.96	8.75	368	1,603	1,802
December	11.2	40.5	3.75	6.74	438	1,070	1,273
1957 : January	10.7	35.7	3.73	5.24	442	1,204	953
February	13.6	37.5	5.23	7.30	775	1,218	1,514
March	14.2	42.5	6.44	7.23	1,954	1,265	1,690
April	12.4	36.3	6.61	6.31	1,388	1,132	1,629
May	16.5	41.6	8.02	8.14	752	1,568	2,177
June	12.7	39.1	6.46	6.70	553	1,717	1,893
July	14.6	40.8	6.45	7.93	724	1,421	1,946
August	15.5	41.7	5.76	8.00	333	1,453	2,026
September	13.6	43.9	5.26	8.27	101	1,472	1,780

Period	Jam	Preserved Fruit	Preserved Vegetables (d)	Tomato Sauce	Tomato Soup
Year : 1938-39	37.9	150,732	10,255	15,358	5,116
1948-49	59.4	165,918	51,279	25,817	34,367
1954-55	36.5	319,235	51,116	21,518	18,505
1955-56	37.5	304,299	77,822	21,645	21,504
1956-57	40.7	297,614	97,152	25,450	30,132
Latest 6 Months, 1957	19.3	97,319	31,061	10,458	9,120
Same 6 Months, 1956	16.2	70,899	28,500	9,968	9,458
Latest 3 Months, 1957	9.0	13,490	10,127	4,044	2,007
Same 3 Months, 1956	9.0	22,599	12,639	5,735	4,675
Month, 1956 : September	2.93	5,244	3,223	1,738	1,165
October	2.22	6,015	4,470	2,197	1,102
November	1.68	1,338	9,148	1,671	505
December	1.58	3,094	12,344	1,231	214
1957 : January	7.66	37,020	12,789	908	1,055
February	4.48	50,643	13,068	3,047	5,491
March	3.84	93,076	11,760	4,247	9,977
April	2.84	58,940	10,756	3,190	5,609
May	4.37	16,561	5,928	2,191	1,225
June	3.10	8,328	4,250	1,033	279
July	2.96	5,125	4,153	1,387	691
August	3.00	4,957	3,713	1,264	712
September	3.00	3,408	2,261	1,393	604

- (a) Excludes Ice Cream Cones and Wafers and Dog Biscuits.
 (b) Source : Department of Customs and Excise.
 (c) Includes Fish Loaf, Fish Cakes, etc., but excludes Fish Paste, Canned Oysters and Shellfish.
 (d) Includes Canned Tomatoes and Canned Processed Peas.

AUSTRALIAN PRODUCTION STATISTICS

Period	Whole Milk for all Purposes (a)	Butter (Factory only) (b)	Cheese (Factory only) (b)	Processed Milk Products	Ice Cream (c)	Beer (d)	Tobacco Cigars and Cigarettes (e)
	Million gallons	'000 tons	'000 tons	'000 tons	'000 gallons	Million gallons	Million lb.
Year : 1938-39	1,190	195	29.0	29.7(f)	4,262	89	23.3
1948-49	1,209	161	43.2	100.1	14,524	144	29.1
1954-55	1,326	188	45.2	104.7	14,796	222	44.5
1955-56	1,405	206	38.7	124.1	16,018	227	46.1
1956-57	r1,362	190	44.8	136.6	15,747	226	49.0
Latest 6 Months, 1957	489	60	14.2	47.7	5,817	102	24.2
Same 6 Months, 1956	540	70	16.1	47.0	5,633	97	23.0
Latest 3 Months, 1957	280	36	9.2	29.3	2,985	52	11.7
Same 3 Months, 1956	303	40	10.9	29.2	2,963	50	11.7
Month, 1956 : September	r123.7	17.3	4.97	13.51	1,203	17.5	3.84
October	r162.6	24.2	6.51	18.59	1,485	22.1	4.41
November	r163.0	24.4	6.37	18.69	1,604	22.2	4.31
December	r159.3	24.1	5.75	16.63	1,835	23.6	3.81
1957 : January	r146.9	22.2	4.53	14.51	2,134	21.1	4.07
February	r113.7	16.3	3.05	10.90	1,518	18.2	4.15
March	r103.8	14.2	2.70	9.69	1,376	18.3	4.07
April	r 82.4	10.5	1.89	7.57	1,101	17.6	3.95
May	r 68.3	7.7	1.59	5.88	973	17.7	4.61
June	r 58.9	5.9	1.53	5.01	758	14.8	3.89
July	68.9	7.6	2.02	6.03	r743	16.6	3.91
August	89.9	11.3	2.92	9.42	r970	15.6	3.77
September	120.9	16.9	4.26	13.83	1,272	19.6	4.04

Period	Floor Coverings (g)	Racquet Frames	Golf Clubs	Balls		
				Cricket (Leather)	Golf	Tennis
	'000 sq.yds.	dozen	dozen	dozen	dozen	dozen
Year : 1938-39	n.a.	20,737	17,843	7,986	117,580	233,648
1948-49	n.a.	23,677	16,509	14,094	187,991	285,241
1954-55	9,246	18,361	14,861	15,165	193,382	257,098
1955-56	9,936	16,651	12,781	16,858	191,758	229,404
1956-57	r11,216	16,158	12,362	16,609	209,070	234,879
Latest 6 Months, 1957	6,161	8,822	7,172	9,564	110,500	119,730
Same 6 Months, 1956	5,707	8,877	5,799	8,485	108,987	103,233
Latest 3 Months, 1957	3,198	4,865	3,463	5,787	58,518	59,465
Same 3 Months, 1956	3,045	4,670	2,774	5,167	54,192	58,965
Month, 1956 : September	r1,036	1,458	987	1,824	16,979	21,473
October	r964	1,624	920	1,650	18,922	29,690
November	r851	1,466	796	1,668	19,805	25,363
December	r724	1,142	926	1,050	16,639	15,799
1957 : January	r639	667	714	907	13,237	10,498
February	r1,006	1,321	1,073	1,187	18,545	14,576
March	r1,021	1,311	1,150	1,203	15,748	19,723
April	r884	1,241	1,278	907	15,478	24,897
May	r1,091	1,316	1,237	1,191	19,996	19,454
June	r988	1,400	1,194	1,679	16,508	15,914
July	1,108	1,663	1,282	1,628	21,310	19,620
August	1,030	1,539	1,030	2,109	18,582	17,373
September	1,060	1,663	1,151	2,050	18,626	22,472

(a) Estimated. (b) Source : Dairy Produce Equalization Committee. (c) Excludes substitutes. (d) From 1956-57 onwards represents quantity produced, (incl. waste) as recorded by Department of Customs and Excise. (e) From 1956-57 onwards represents the quantity on which Excise duty was paid; Source : Department of Customs and Excise. (f) Excludes Infants' and Invalids' foods. (g) Pile and Non-Pile Soft Floor Coverings, Linoleum (including Felt Base Type), Rubber Floor Coverings and Asphalt or Thermoplastic Floor Tiles.

AUSTRALIAN PRODUCTION STATISTICS

Period	Mattresses			News- print	Phono- graph Records	Wall and Ceiling Board- Hardboard (c)
	Woven Wire, Link Mesh and Spring (a)	Inner Spring	Other (b)			
	'000	'000	'000	'000 tons	'000	'000 sq.yds.
Year : 1938-39	230	27	n.a.	..	n.a.	n.a.
1948-49	202	155	456	30.3	n.a.	n.a.
1954-55	356	476	380	73.6	7,344	19,834
1955-56	332	501	363	79.0	8,115	22,619
1956-57	310	503	328	79.6	9,392	22,623
Latest 6 Months, 1957	155	263	159	40.9	4,344	12,413
Same 6 Months, 1956	156	247	157	40.3	4,396	11,601
Latest 3 Months, 1957	81	137	76	20.4	2,228	6,660
Same 3 Months, 1956	76	121	80	20.3	2,256	5,744
Month, 1956 :						
September	24.0	39.2	26.0	6.62	732	1,901
October	28.5	44.8	28.0	6.79	889	2,122
November	28.6	46.2	31.0	6.56	985	1,934
December	25.0	40.5	28.1	5.30	627	1,688
1957 :						
January	19.4	32.9	21.1	6.94	755	1,739
February	30.5	45.7	28.7	6.49	856	1,700
March	29.1	44.8	28.1	6.83	908	1,943
April	24.7	42.4	27.6	6.58	735	1,770
May	25.7	47.9	32.5	7.07	817	2,133
June	23.2	36.3	23.2	6.80	564	1,850
July	24.9	47.7	24.0	7.05	733	2,219
August	30.3	45.5	24.3	6.86	759	2,238
September	26.1	43.5	27.2	6.53	736	2,203

- (a) Includes Mattresses made and incorporated in Folding Beds and Stretchers.
 (b) Includes Soft Filled, Rubber and Other.
 (c) Made of Pulped Wood.

S.R. CARVER
COMMONWEALTH STATISTICIAN.

COMMONWEALTH BUREAU OF CENSUS AND STATISTICS

CANBERRA, A.C.T.

12TH DECEMBER, 1957.

MONTHLY PRODUCTION: AUSTRALIA

1938-39, 1956-57, 1957-58



MONTHLY AVERAGE 1938-39



MONTHLY AVERAGE 1956-57

— 1957-58

- - - 1956-57

