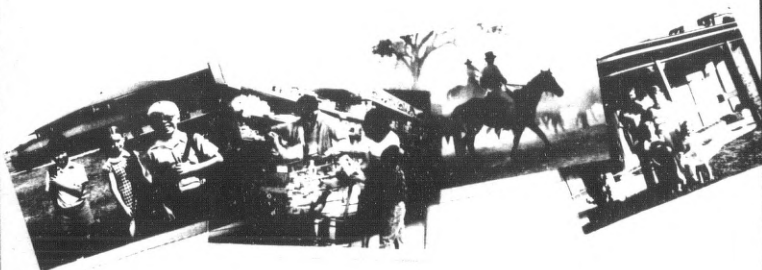




Australian Bureau of Statistics

**Persons and Dwellings in Legal
Local Government Areas, Statistical
Local Areas and Urban
Centres/(Rural) Localities**

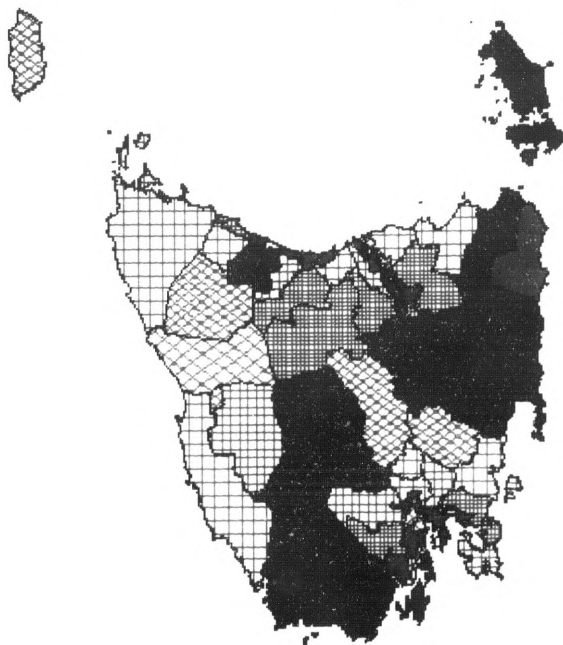
Tasmania



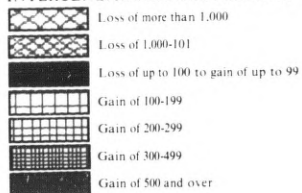
Catalogue No. 2467.0

Census 86

INTERCENSAL CHANGE IN STATISTICAL LOCAL AREAS WITHIN
TASMANIA (1981-1986): PERSONS



INTERCENSAL CHANGE, PERSONS



See inside back cover for map of Hobart Statistical Division intercessal change.

EMBARGOED UNTIL 11.30 A.M. 15 JUNE 1988

NEW ISSUE

CENSUS OF POPULATION AND HOUSING, 30 JUNE 1986
**CENSUS 86 – PERSONS AND DWELLINGS IN LEGAL LOCAL
GOVERNMENT AREAS, STATISTICAL LOCAL AREAS
AND URBAN CENTRES/(RURAL) LOCALITIES**

TASMANIA

IAN CASTLES
Australian Statistician

© Commonwealth of Australia 1988

Printed by R. D. RUBIE, Commonwealth Government Printer, Canberra

PHONE INQUIRIES • *about these statistics* and other ABS services—contact Information Services on Hobart (002) 20 9409 or any ABS office.

MAIL INQUIRIES • *write to Information Services*, ABS, Box 66A, G.P.O. Hobart, 7001 or any ABS office.

ELECTRONIC SERVICES • on VIATEL — key *656#. • on AUSSTATS — phone (062) 52 6017.
• on TELESTATS — phone (062) 52 5404.

CONTENTS

<i>Table</i>		<i>Page</i>
	Explanatory Notes	1
C 1	Number of persons and dwellings : legal local government areas in alphabetical order, Tasmania, Censuses 1986 and 1981	6
C 2	Number of persons : statistical local areas within statistical divisions and statistical subdivisions, Tasmania, Censuses 1986 and 1981	7
C 3	Number of dwellings : statistical local areas within statistical divisions and statistical subdivisions, Tasmania, Censuses 1986 and 1981	9
C 4	Number of dwellings : urban centres and (rural) localities in alphabetical order, Tasmania, Censuses 1986 and 1981	13
C 5	Number of persons : urban centres and (rural) localities in population size order, Tasmania, Censuses 1986 and 1981	15

APPENDICES

A	Changes to geographic areas, Tasmania, Census 1981 to Census 1986	17
B	Census geographic areas — definitions	18
C	1986 Census household form	19
D	Inquiries	35
E	Maps — Statistical local areas within statistical divisions and statistical subdivisions in Tasmania	

EXPLANATORY NOTES

1. Introduction

This publication, containing results from the 1986 Census of Population and Housing, is one of a series for each State and the Northern Territory. It presents census counts of persons and dwellings for various geographic levels based on place of enumeration (i.e. the counts for each area are of persons and dwellings enumerated in the area on census night, 30 June 1986).

Census counts on a place of enumeration basis (C) are not comparable with census counts on a place of usual residence basis (U), or the estimated resident population (ERP) figures released by the ABS. A brief description of the two bases of enumeration and the ERP is in Section 3. More details can be found in *The 1986 Census Dictionary* (2174.0). All census table numbers are prefixed as appropriate with the letter 'C' or 'U'. However, this publication contains only tables in the 'C' category.

The tables in this publication contain counts of persons, and counts of dwellings by class of dwelling (including caravans etc. in caravan parks), for statistical local areas, statistical divisions, statistical subdivisions, legal local government areas, urban centres and (rural) localities.

The tables also contain counts from the 1981 Census. For legal local government areas, 1981 Census data have been presented according to boundaries adopted for the 1986 Census. Because some intercensal boundary changes involve areas smaller than collection districts (CDs), precise figures cannot always be calculated. In these cases, the 1981 population on 1986 boundaries is recorded as not available (n.a.). Note that for urban centres and (rural) localities the 1981 Census data are shown on boundaries delineated for 1981.

See Appendix A for intercensal area changes.

Printed census publications contain broad summaries only, and represent a very small amount of the total census data released. More detailed cross-tabulations for the larger geographic levels (e.g. State or statistical region), and somewhat less detailed tabulations for small areas (e.g. collection district or statistical local area), are available on microfiche and magnetic tape. For further information see *Census 86 — Data Release Plans* (2173.0).

2. Scope and coverage

The 1986 Census of Population and Housing aimed at counting every person who spent census night, 30 June 1986, in Australia, including persons on vessels in or between Australian ports, or on board long-distance trains, buses or aircraft. All private dwellings were also counted, whether occupied or unoccupied. Occupied

non-private dwellings, such as hospitals, prisons, hotels etc. were also included. People were counted where they were on census night, which may not have been where they usually lived. This is the basis for the counts in this publication. Place of usual residence was asked of each person, and answers, where they differed from enumeration address, were coded to statistical local area level. Census counts based on place of usual residence are available in other output products. Visitors to Australia were enumerated regardless of how long ago they had arrived or how long they planned to stay. They are included in the counts based on place of enumeration but not in those counts based on usual residence. Australian residents out of the country on census night were excluded from the count.

Diplomatic personnel and their families are out of the scope of the census, as are diplomatic residences.

3. Definitions

Census Count — Place of Enumeration (C)

Persons were counted where they were actually located on census night. Overseas visitors are included and Australians overseas are excluded. No adjustment is made for census underenumeration.

Census Count — Place of Usual Residence (U)

Persons were also counted according to their stated place of usual residence (i.e. their answer to question 6 — see a facsimile of the 1986 Census household form at Appendix C). Overseas visitors and Australians overseas are excluded, and no adjustment is made for census underenumeration. Statistics on a place of usual residence basis are not included in this publication.

Estimated Resident Population (ERP)

These estimates are formed by adding estimates of Australians overseas, and of the census undercount, to the census count at place of usual residence. The ERP at census date is updated quarterly at national and State levels between population censuses. ERP statistics are not included in this publication.

Migratory

Persons enumerated on census night on off-shore oil rigs, drilling platforms and the like, on board vessels in and between Australian ports, or on board long-distance trains, buses or aircraft are classified as migratory. Such persons are not included in the population of specific statistical local areas, but are shown as a balancing item (Off-shore Areas and Migratory) for each State and the Northern Territory. The Australian Capital Territory has no migratory population.

Dwellings

For the 1986 Census, dwellings are classified into four basic groups: occupied private dwellings; occupied caravans etc. in caravan parks; unoccupied private dwellings; and non-private dwellings.

- (a) An *occupied private dwelling* is defined as the premises occupied by a household (see below) on census night (except households occupying caravans etc. in caravan parks — see (b)). A private dwelling is normally a house, flat, part of a house or even a room, but can also be a house above shops or offices, a boat, a tent, a houseboat, or a caravan if standing on its own block of land and not occupied by members of the same household resident in an adjacent dwelling.

It is important to remember that the census definition of a private dwelling means that the total number of dwellings may be more than the total number of known structures in any given area (see 'household' below).

- (b) For the 1986 Census, an *occupied caravan etc. in a caravan park* is, for the first time, treated as a separate household. This category also includes occupied boats in marinas. In previous censuses, caravans etc. in caravan parks were considered to be parts of a non-private dwelling (the caravan park) which meant that no family relationship data were collected for them. This change in classification will affect some comparisons made between censuses, and care should be taken when comparing family and non-private dwelling data with previous censuses.
- (c) An *unoccupied private dwelling* is a structure built specifically for private living purposes and capable of being lived in, but unoccupied at the time of the census. Vacant houses, holiday homes, huts, cabins (other than seasonal workers' quarters) and houseboats are counted as unoccupied dwellings; but vacant tents, garages and caravans, if not on a separate block (and if not normally occupied), are not. Only private dwellings can be classified as unoccupied (i.e. unoccupied caravans etc. in caravan parks and unoccupied non-private dwellings are not counted). Unoccupied dwellings include: dwellings which are vacant because they have been newly completed; dwellings which are vacant for demolition or repair; dwellings to let; and dwellings where all members of the household were absent on census night.
- (d) *Non-private dwellings* (NPDs) are dwellings with accommodation not in the dwelling categories listed above, and are classified according to their function. These dwellings include schools,

hotels, motels, guest houses, boarding houses, prisons, religious and charitable institutions, hospitals, nursing homes, defence establishments and other communal dwellings. Usually, occupants of such dwellings use communal facilities (such as hotel dining rooms or mess halls) attached to the particular establishment. Self-contained units provided by commercial enterprises, such as hotels, motels, homes for the elderly, or guest houses, are treated as parts of a non-private dwelling, not as separate dwellings. Campers out and persons classed as migratory on census night were also included in the NPD count.

Household

For census purposes, a household is either a person living alone, or a group of people living together as a single domestic unit with common eating arrangements. It is possible for more than one household to live in one house or structure. For example, a lodger who lives with a family and provides all his own food is not a member of the family's household but constitutes a separate household and, therefore, completes a separate household form. The premises occupied by households are classified as either occupied private dwellings or as caravans etc. in a caravan park.

Campers out

Persons who spent census night in the open in cars, caravans or trucks pulled up at the side of the road for that night only, or persons in other temporary camps or accommodation erected for that night only, are classified as campers out. Such persons are included in the population of the statistical local area in which they were enumerated.

4. Geographic areas

The geographic units used in this publication are statistical local areas (SLAs), statistical divisions, statistical subdivisions, legal local government areas (LGAs) and urban centres/(rural) localities. Definitions of these areas appear below. For definitions of other census geographic areas see Appendix B.

SLAs are a new spatial unit for 1986 Census. The 1981 Census equivalent was the census local government area. SLAs are for the most part legal LGA based. In special cases, where a legal LGA is much larger and more populous than the general run of legal LGAs (as is the City of Brisbane), or where there are no legal local government authorities (as in the Australian Capital Territory), the SLAs are officially defined suburbs or localities. SLAs cover, in aggregate, the whole of Australia without gaps or overlaps.

Statistical divisions consist of one or more statistical subdivisions which in turn consist of one or more SLAs and cover, in aggregate, the whole of Australia without gaps or overlaps. They are used as a large, general purpose regional type geographic area. Statistical divisions are designed to be relatively homogeneous regions, characterised by identifiable social and economic links between the inhabitants and the economic units within the region, under the unifying influence of one or more major towns or cities.

Statistical subdivisions consist of one or more SLAs and cover, in aggregate, the whole of Australia without gaps or overlaps. They are used as an intermediate level, general purpose regional type geographic area.

Legal local government areas are the geographic areas of incorporated local government councils, such as towns and shires, and consist of one or more SLAs. In aggregate, these cover only part of Australia. The major areas of Australia not governed by incorporated local government councils include the northern parts of South Australia, most of the Northern Territory and all of the Australian Capital Territory. Legal LGAs can, and sometimes do, straddle statistical subdivision, statistical district and statistical division boundaries. An example is 'Tweed Shire' in New South Wales. The predominantly urban part of this shire is treated as an SLA as well as a statistical subdivision in its own right and constitutes the New South Wales part of the 'Gold Coast-Tweed' Statistical District. The predominantly rural remainder of this shire constitutes a separate SLA outside the 'Gold Coast-Tweed' Statistical District, and lies within a different statistical subdivision.

Urban centres (rural) localities consist of one or more adjoining whole collection districts (CDs) with urban characteristics and represent, in the case of (rural) localities, population clusters of between 200 and 999 people and, in the case of urban centres, population clusters of 1,000 or more people (including known holiday resorts of smaller size). Because of their nature they can, and sometimes do, straddle SLA, legal LGA, statistical subdivision and other census geographic area boundaries.

5. Maps

The choropleth maps on the inside of the front and back covers show intercensal change (1981-1986) in SLAs in terms of person counts.

The statistical division maps (Appendix E) show the boundaries, names and codes of statistical divisions, statistical subdivisions and SLAs listed in this publication.

6. Geographic codes

The geographic areas referred to in tables in this publication can be located by reference to the maps at Appendix E. The geographic codes describing areas in the maps also appear in the tables. For further details, refer to *Census 86 — Australian Standard Geographical Classification: Geographic Code List* (2188.0).

7. Data quality

Statistical collections such as the census are subject to a number of sources of error. While some errors (such as deliberate misreporting) mostly defy detection and correction procedures, the number of errors in overall census results is expected to be generally insignificant. Information on data quality will be released during 1988.

Main sources of error in the census are:

- (a) *Underenumeration.* Despite efforts to obtain full coverage of persons and dwellings (other than those associated with overseas diplomatic missions), some undercounting still occurs. A measure of the extent of underenumeration is obtained from a small survey of households undertaken very shortly after the census. Undercounting of persons in the 1986 Census was estimated to be 1.8 per cent for Australia as a whole.
- (b) *Partial response.* In those instances where the householder omitted to provide a response to a question, a 'not stated' code was allocated; with the exception of non-response to age, sex, marital status, and SLA of usual residence. These variables were imputed using other information on the census form, and specially constructed random tables.
- (c) *Respondent error.* Computer editing procedures are used to detect obvious errors made by individuals in completing the form (e.g. a six year old person who was married). Such procedures cannot detect all respondent errors and some remain in final output.
- (d) *Processing error.* Errors created during the processing of the census are kept at an acceptable level by means of a quality control system, which involves sample checking at different stages of the coding and keying operations, and taking corrective action where necessary.

8. Further information

Further information about 1986 Census statistics is available from the nearest ABS office (see Appendix D for addresses and telephone numbers). The information paper *Census 86 — Data Release Plans* (2173.0) describes

standard output products to be released from the 1986 Census. Details of tabulations are contained in the *Catalogue of 1986 Census Tables* (2175.0).

9. Census 86 publications

Statistical publications

Statistical publications (standard series) currently planned from the 1986 Census of Population and Housing are:

Census 86 — Age and Sex of Persons in Statistical Local Areas and Statistical Divisions (2454.0-2461.0) (A series of separate publications for each State and Territory)

Census 86 — Persons and Dwellings in Legal Local Government Areas, Statistical Local Areas and Urban Centres/(Rural) Localities (2462.0-2468.0) (A series of separate publications for each State and the Northern Territory)

Census 86 — Persons and Dwellings in Statistical Local Areas, Australian Capital Territory (2469.0)

Census 86 — Profile of Legal Local Government Areas — Usual Residents Counts (2470.0-2476.0) (A series of separate publications for each State and the Northern Territory)

Census 86 — Profile of Statistical Local Areas — Usual Residents Counts: Australian Capital Territory (2477.0)

Census 86 — Profile of Statistical Local Areas — Usual Residents Counts: Brisbane Statistical Division (2478.0)

Census 86 — Summary Characteristics of Persons and Dwellings (2479.0-2489.0) (A series of separate publications for each State, Territory, Australia and the external Territories of the Cocos (Keeling) Islands and Christmas Island)

Census 86 — Cross-classified Characteristics of Persons and Dwellings (2490.0-2498.0) (A series of separate publications for each State, Territory and Australia)

Census 86 — Aboriginals and Torres Strait Islanders: Australia, States and Territories (2499.0)

Census 86 — Characteristics of Persons in Hobart Suburbs, 30 June 1986 (2201.6)

Census 86 — Characteristics of Persons in Launceston Suburbs, 30 June 1986 (2202.6)

Census 86 — Characteristics of Persons in Burnie-Devonport Suburbs, 30 June 1986 (2203.6)

In addition, other statistical publications (special series) providing information on, and analysis of, the census results are planned. These are:

Census 86 — Australia in Brief (2501.0)

Census 86 — A Summary of Major Findings (2502.0)

Census 86 — The Aboriginal and Torres Strait Islander Population (2503.0)

Census 86 — Population Growth and Distribution (2504.0)

Census 86 — Multicultural Australia (2505.0)

Census 86 — Families and Households (2506.0)

Census 86 — Rural Australia (2507.0)

Census 86 — The Aged Population (2508.0)

Census 86 — Caravan Park Dwellers (2509.0)

Census 86 — Religion (2510.0)

Census 86 — Sole Parent Families (2511.0)

Further titles may be added to this list in the future.

Users may request non-standard census output from the ABS. For more details see *Census 86 — Special Data Services* (2181.0).

Information papers

The following information papers are being published:

Census 86 — New South Wales Publishing Information (2101.1)

Census 86 — Data Release Plans (2173.0)

The 1986 Census Dictionary (2174.0)

Catalogue of 1986 Census Tables (2175.0)

Census 86 — How Australia Takes a Census (2176.0)

Census 86 — Census Products Price List (2177.0)

Census 86 — Understanding Family Data (2178.0)

Census 86 — Collection District Master File (2179.0)

Census 86 — Census Data for Microcomputers (2180.0)

Census 86 — Special Data Services (2181.0)

Census 86 — Australian Standard Classification of Occupations/ Classification and Classified List of Occupations: Link (2182.0)

Census 86 — Maps (2183.0)

Census 86 — Sample Files on Magnetic Tape (2184.0)

Census 86 — Microfiche (2185.0)

Census 86 — Standard Tables on Magnetic Tape (2186.0)

Census 86 — Australian Standard Geographical Classification: Geographic Code List (2188.0)

Census 86 — Revised Data on Attendance at Educational Institutions (2612.0)

Evaluation papers

A series of data quality papers is planned for release:

Census 86 — Data Quality: Overview (2601.0)

Census 86 — Data Quality: Undercount (2602.0)

Census 86 — Data Quality: Aboriginal and Torres Strait Islander Counts (2603.0)

Census 86 — Data Quality: Ethnicity (2604.0)

Census 86 — Data Quality: Families (2605.0)

Census 86 — Data Quality: Education (2606.0)

10. Related ABS publications

Current publications produced by the ABS are listed in the *Catalogue of Publications, Australia* (1101.0). The ABS also issues, on Tuesdays and Fridays, a *Publications Advice* (1105.0) which lists publications to be released in the next few days. The Catalogue and Publications Advice are available from any ABS office.

11. Symbols and other usages

- n.a. not available (used where it has not been possible to provide comparable 1981 Census data)
- nil or rounded to zero
- .. not applicable
- Minus sign (-) followed by a figure, denotes a decrease.
- (C) city
- (H) known holiday resort
- (L) (rural) locality

(M) municipality

Electronic services

- VIATEL Key *656# for selected current economic, social and demographic statistics.
- AUSSTATS Thousands of up-to-date time series are available on this ABS on-line service through CSIRONET.
For further information phone the AUSSTATS Help Desk on (062) 52 6017.
- TELESTATS This service provides foreign trade statistics tailored to users' requirements.
Further information is available on (062) 52 5404.

TABLE C1. NUMBER OF PERSONS AND DWELLINGS: LEGAL LOCAL GOVERNMENT AREAS IN ALPHABETICAL ORDER, TASMANIA, CENSUSES 1986 AND 1981

Legal Local Government Area		1986 Census					1981 Census		Intercensal variation			
		Total persons	Occupied dwellings		Unoccupied dwellings	Total dwellings	Total persons	Occupied private dwellings	Persons	Occupied private dwellings		
			Private dwellings	Caravans in parks (a)							Non-private dwellings (a)	Total (b)
Code	Name											
0100	Beaconsfield (M)	15,356	5,177	34	13	5,224	783	6,007	13,635	4,387	1,721	790
0200	Bothwell (M)	802	261	—	7	268	945	1,213	782	248	20	13
0300	Brighton (M)	11,669	3,256	—	5	3,261	154	3,415	9,441	2,571	2,228	685
0400	Bruny (M)	438	184	—	3	187	384	571	366	155	72	29
0500	Burnie (M)	20,585	6,903	30	21	6,954	434	7,388	19,994	6,363	591	540
0600	Campbell Town (M)	1,437	500	—	7	507	140	647	1,508	492	-71	8
0700	Circular Head (M)	7,863	2,507	7	17	2,531	538	3,069	7,685	2,356	178	151
0800	Clarence (M)	45,638	14,843	2	19	14,864	999	15,863	44,484	13,539	1,154	1,304
0900	Deloraine (M)	5,278	1,773	8	9	1,790	298	2,088	4,882	1,597	396	176
1000	Devonport (C)	24,417	8,347	87	26	8,460	583	9,043	23,162	7,567	1,255	780
1100	Esperance (M)	3,125	1,079	3	6	1,088	406	1,494	3,043	998	82	81
1200	Evandale (M)	2,176	696	—	5	701	81	782	1,900	585	276	111
1300	Fingal (M)	2,808	968	—	7	975	275	1,250	2,864	968	-56	—
1400	Flinders (M)	1,010	358	—	6	364	113	477	1,039	341	-29	17
1500	George Town (M)	6,938	2,203	7	6	2,216	548	2,764	7,078	2,035	-140	168
1600	Glamorgan (M)	1,723	607	22	14	643	603	1,246	1,634	565	89	42
1700	Glenorchy (C)	40,883	14,615	64	19	14,698	652	15,350	41,019	13,838	-136	777
1800	Gormanston (M)	341	40	—	5	45	8	53	126	41	215	-1
1900	Green Ponds (M)	1,087	368	—	—	368	31	399	983	311	104	57
2000	Hamilton (M)	2,508	777	3	14	794	235	1,029	2,488	749	20	28
2100	Hobart (C)	47,356	18,322	12	141	18,475	1,492	19,967	47,920	17,800	-564	522
2200	Huon (M)	5,028	1,663	—	5	1,668	118	1,786	4,703	1,461	325	202
2300	Kentish (M)	4,574	1,426	4	8	1,438	138	1,576	4,254	1,269	320	157
2400	King Island (M)	1,989	694	1	3	698	196	894	2,592	772	-603	-78
2500	Kingborough (M)	20,367	6,680	11	6	6,697	521	7,218	17,067	5,412	3,300	2,268
2600	Latrobe (M)	6,172	2,032	8	8	2,048	363	2,411	5,521	1,747	651	285
2700	Launceston (C)	61,492	21,817	59	109	21,985	1,444	23,429	60,473	20,257	1,019	1,560
2800	Longford (M)	6,190	2,099	3	8	2,118	169	2,287	5,621	1,829	569	270
3000	New Norfolk (M)	9,832	2,960	3	18	2,981	256	3,237	9,617	2,690	215	270
3100	Outlands (M)	1,836	685	—	4	689	157	846	1,996	672	-160	13
3200	Penguin (M)	5,264	1,751	29	—	1,780	135	1,915	5,097	1,600	167	151
3300	Port Cygnet (M)	2,701	902	2	4	908	364	1,272	2,184	729	517	173
3400	Portland (M)	2,832	1,035	21	10	1,066	884	1,950	2,150	753	682	282
3500	Queenstown (M)	3,596	1,180	9	15	1,204	113	1,317	3,721	1,161	-125	19
3600	Richmond (M)	2,053	702	14	4	720	78	798	1,788	597	265	105
3700	Ringarooma (M)	2,215	746	2	6	754	197	951	2,249	744	-34	2
3800	Ross (M)	493	170	1	2	173	78	251	504	167	-11	3
4000	Scottsdale (M)	4,398	1,582	8	6	1,596	349	1,945	4,254	1,414	144	168
4100	Sorell (M)	6,782	2,368	9	6	2,383	1,539	3,922	5,243	1,814	1,539	554
4200	Spring Bay (M)	1,992	667	6	6	680	419	1,099	1,885	603	107	64
4300	Strahan (M)	536	188	10	6	204	111	315	411	136	125	52
4400	Tasman (M)	1,369	511	2	10	523	667	1,190	1,116	400	253	111
4500	Ulverstone (M)	13,847	4,653	73	14	4,740	296	5,036	12,757	4,137	1,090	516
4600	Waratah (M)	1,583	479	9	4	483	151	634	2,133	520	-550	-50
4700	Westbury (M)	7,867	2,592	33	9	2,634	186	2,820	2,071	1,301	521	521
4800	Wynard (M)	12,272	4,067	46	16	4,129	565	4,694	11,845	3,663	427	404
4900	Zeehan (M)	5,076	1,365	17	15	1,397	274	1,671	6,723	1,465	-1,647	-100

(a) In the 1981 Census, caravans etc. in caravan parks were considered to be part of a non-private dwelling (the caravan park); see Definitions in Section 3 of the Explanatory Notes. Therefore, 1986 Census non-private dwelling counts are not comparable with previous census counts. (b) Includes caravans etc. in caravan parks.

TABLE C2. NUMBER OF PERSONS: STATISTICAL LOCAL AREAS WITHIN STATISTICAL DIVISIONS AND STATISTICAL SUBDIVISIONS, TASMANIA, CENSUSES 1986 AND 1981

Stat. Div. Code	Stat. Subdiv. Code	SLA Code	Area name	1986 Census			1981 Census	Stat. Div. Code	Stat. Subdiv. Code	SLA Code	Area name	1986 Census			1981 Census
				Males	Females	Persons	Persons					Males	Females	Persons	Persons
05			GREATER HOBART STATISTICAL DIVISION					15			NORTHERN STATISTICAL DIVISION				
	05		Greater Hobart Statistical Subdivision						05		Greater Launceston Statistical Subdivision				
		0301	Brighton (M) — Pt A	5,066	5,302	10,368	8,332			0101	Beaconsfield (M) — Pt A	7,107	7,078	14,185	12,697
		0800	Clarence (M)	22,430	23,208	45,638	44,484			1201	Evandale (M) — Pt A	829	799	1,628	1,296
		1700	Glenorchy (C)	20,065	20,818	40,883	41,019			1501	George Town (M) — Pt A	3,161	3,037	6,198	6,467
		2101	Hobart (C) — Inner	500	502	1,002	1,123			2701	Launceston (C) — Inner	231	159	390	408
		2102	Hobart (C) — Remainder	22,247	24,107	46,354	46,797			2703	Launceston (C) — Pt B	28,106	30,350	58,456	57,786
		2501	Kingborough (M) — Pt A	9,383	9,553	18,936	15,815			2901	Longford (M) — Pt A	2,018	2,093	4,111	3,518
		3001	New Norfolk (M) — Pt A	3,415	3,350	6,765	6,802			4701	Westbury (M) — Pt A	1,734	1,784	3,518	2,612
		4101	Sorell (M) — Pt A	2,623	2,513	5,136	3,987				<i>Total Subdivision</i>	<i>43,186</i>	<i>45,300</i>	<i>88,486</i>	<i>84,784</i>
			<i>Total Subdivision</i>	<i>85,729</i>	<i>89,353</i>	<i>175,082</i>	<i>168,359</i>				Urban	38,140	40,467	78,607	74,401
			Urban	77,048	81,031	158,079	154,943				Rural	5,046	4,833	9,879	10,383
			Rural	8,681	8,322	17,003	13,416		10		Central North Statistical Subdivision				
			Total Division	85,729	89,353	175,082	168,359			0102	Beaconsfield (M) — Pt B	598	573	1,171	938
10			SOUTHERN STATISTICAL DIVISION						0900	Deloraine (M)	2,651	2,627	5,278	4,882	
	05		Southern Statistical Subdivision						1202	Evandale (M) — Pt B	296	252	548	604	
		0200	Bothwell (M)	441	361	802	782		1502	George Town (M) — Pt B	377	363	740	611	
		0302	Brighton (M) — Pt B	642	659	1,301	1,109		2704	Launceston (C) — Pt C	1,344	1,302	2,646	2,279	
		0400	Bruny (M)	241	197	438	366		2902	Longford (M) — Pt B	1,064	1,015	2,079	2,103	
		1100	Esperance (M)	1,636	1,489	3,125	3,043		4702	Westbury (M) — Pt B	2,131	2,218	4,349	3,954	
		1600	Glamorgan (M)	888	835	1,723	1,634			<i>Total Subdivision</i>	<i>8,461</i>	<i>8,350</i>	<i>16,811</i>	<i>15,371</i>	
		1900	Green Ponds (M)	580	507	1,087	983			Urban	1,534	1,685	3,219	3,084	
		2000	Hamilton (M)	1,411	1,097	2,508	2,488			Rural	6,927	6,665	13,592	12,287	
		2200	Huon (M)	2,527	2,501	5,028	4,703		15	North Eastern Statistical Subdivision					
		2502	Kingborough (M) — Pt B	737	694	1,431	1,252		0600	Campbell Town (M)	703	734	1,437	1,508	
		3002	New Norfolk (M) — Pt B	1,598	1,469	3,067	2,815		1300	Fingal (M)	1,460	1,348	2,808	2,864	
		3100	Oatlands (M)	964	872	1,836	1,996		1400	Flinders (M)	521	489	1,010	1,039	
		3300	Port Cygnet (M)	1,361	1,340	2,701	2,184		3400	Portland (M)	1,458	1,374	2,832	2,150	
		3600	Richmond (M)	1,057	996	2,053	1,788		3700	Ringarooma (M)	1,157	1,058	2,215	2,249	
		4102	Sorell (M) — Pt B	865	781	1,646	1,256		3800	Ross (M)	236	257	493	504	
		4200	Spring Bay (M)	1,018	974	1,992	1,885		4000	Scottsdale (M)	2,187	2,211	4,398	4,254	
		4400	Tasman (M)	739	630	1,369	1,116			<i>Total Subdivision</i>	<i>7,722</i>	<i>7,471</i>	<i>15,193</i>	<i>14,568</i>	
			<i>Total Subdivision</i>	<i>16,705</i>	<i>15,402</i>	<i>32,107</i>	<i>29,400</i>			Urban	2,017	2,095	4,112	3,892	
			Urban	1,202	1,222	2,424	2,399			Rural	5,705	5,376	11,081	10,676	
			Rural	15,503	14,180	29,683	27,001			Total Division	59,369	61,121	120,490	114,723	
			Total Division	16,705	15,402	32,107	29,400			Urban	41,691	44,247	85,938	81,377	
										Rural	17,678	16,874	34,552	33,346	

TABLE C3. NUMBER OF DWELLINGS : STATISTICAL LOCAL AREAS WITHIN STATISTICAL DIVISIONS AND STATISTICAL SUBDIVISIONS, TASMANIA, CENSUSES 1986 AND 1991

Stat. Div. Code	Stat. Subdiv. Code	SLA Code	Area name	1986 Census					1981 Census				Intercensal variation		
				Occupied dwellings			Total (b)	Un-occupied dwellings	Occupied dwellings			Total dwellings	Occupied private dwellings	Percentage	
				Private dwellings	Caravans in parks (a)	Non-private dwellings (a)			Private dwellings	Non-private dwellings (a)	Un-occupied dwellings				
05			GREATER HOBART STATISTICAL DIVISION												
	05		Greater Hobart Statistical Subdivision												
		0301	Brighton (M) — Pt A	2,846	—	4	2,850	123	2,973	2,228	1	109	2,338	618	27.74
		0800	Clarence (M)	14,843	2	19	14,864	999	15,863	13,539	21	911	14,471	1,304	9.63
		1700	Glenorchy (C)	14,615	64	19	14,698	652	15,350	13,838	22	588	14,448	777	5.61
		2101	Hobart (C) — Inner	160	—	18	178	27	205	179	23	23	225	119	10.61
		2102	Hobart (C) — Remainder	18,162	12	123	18,297	1,465	19,762	17,621	118	1,496	19,235	541	3.07
		2501	Kingborough (M) — Pt A	6,216	11	6	6,233	427	6,660	5,023	8	362	5,393	1,193	23.75
		3001	New Norfolk (M) — Pt A	1,991	—	12	2,003	149	2,152	1,842	11	125	1,978	149	8.09
		4101	Sorell (M) — Pt A	1,807	9	2	1,818	1,208	3,026	1,367	3	1,129	2,499	440	32.19
			<i>Total Subdivision</i>	<i>60,640</i>	<i>98</i>	<i>203</i>	<i>60,941</i>	<i>5,050</i>	<i>65,991</i>	<i>55,637</i>	<i>207</i>	<i>4,743</i>	<i>60,587</i>	<i>5,003</i>	<i>8.99</i>
			Urban	55,090	84	190	55,364	3,254	58,618	51,411	197	3,068	54,676	3,679	7.16
			Rural	5,550	14	13	5,577	1,796	7,373	4,226	10	1,675	5,911	1,324	31.33
			Total Division	60,640	98	203	60,941	5,050	65,991	55,637	207	4,743	60,587	5,003	8.99
10			SOUTHERN STATISTICAL DIVISION												
	05		Southern Statistical Subdivision												
		0200	Bothwell (M)	261	—	7	268	945	1,213	248	6	842	1,096	13	5.24
		0302	Brighton (M) — Pt B	410	—	1	411	31	442	343	1	380	67	19.53	
		0400	Bruny (M)	184	—	3	187	384	571	155	2	348	505	29	18.71
		1100	Esperance (M)	1,079	3	6	1,088	406	1,494	998	7	371	1,376	81	8.12
		1600	Glamorgan (M)	607	22	14	643	603	1,246	565	17	507	1,089	42	7.43
		1900	Green Ponds (M)	368	—	—	368	31	399	311	1	22	334	57	18.33
		2000	Hamilton (M)	777	3	14	794	235	1,029	749	14	287	1,050	28	3.74
		2200	Huon (M)	1,663	—	5	1,668	118	1,786	1,461	4	1,267	202	13.83	
		2502	Kingborough (M) — Pt B	464	—	—	464	94	558	389	2	60	451	75	19.28
		3002	New Norfolk (M) — Pt B	969	3	6	978	107	1,085	848	7	99	954	121	14.27
		3100	Oatlands (M)	685	—	4	689	157	846	672	5	149	826	13	1.93
		3300	Port Cygnet (M)	902	2	4	908	364	1,272	729	3	284	1,016	173	23.73
		3600	Richmond (M)	702	14	4	720	78	798	597	3	73	673	105	17.59
		4102	Sorell (M) — Pt B	561	—	4	565	331	896	447	1	314	762	114	25.50
		4200	Spring Bay (M)	667	6	7	680	419	1,099	603	16	353	972	64	10.61
		4400	Tasman (M)	511	2	10	523	667	1,190	400	8	528	936	111	27.75
			<i>Total Subdivision</i>	<i>10,810</i>	<i>55</i>	<i>89</i>	<i>10,954</i>	<i>4,970</i>	<i>15,924</i>	<i>9,515</i>	<i>97</i>	<i>4,375</i>	<i>13,987</i>	<i>1,295</i>	<i>13.61</i>
			Urban	891	12	6	909	437	1,346	826	11	373	1,210	65	7.87
			Rural	9,919	43	83	10,045	4,533	14,578	8,689	86	4,002	12,777	1,230	14.16
			Total Division	10,810	55	89	10,954	4,970	15,924	9,515	97	4,375	13,987	1,295	13.61

For footnotes see end of table.

TABLE C3. NUMBER OF DWELLINGS : STATISTICAL LOCAL AREAS WITHIN STATISTICAL DIVISIONS AND STATISTICAL SUBDIVISIONS,
TASMANIA, CENSUSES 1986 AND 1981—continued

Stat. Div. Code	Stat. Subdiv. Code	SLA Code	Area name	1986 Census				1981 Census				Intercensal variation			
				Private dwellings	Occupied dwellings		Un-occupied dwellings	Total dwellings	Private dwellings	Occupied dwellings		Total dwellings	Occupied private dwellings	Percentage	
					Caravans in parks (a)	Non-private dwellings (a)				Non-private dwellings (a)	Un-occupied dwellings				
15			NORTHERN STATISTICAL DIVISION												
	05		Greater Launceston Statistical Subdivision												
		0101	Beaconsfield (M) — Pt A	4,806	34	13	4,853	737	5,590	4,108	13	717	4,838	698	16.99
		1201	Evandale (M) — Pt A	519	—	1	520	32	552	405	1	23	429	114	28.15
		1501	George Town (M) — Pt A	1,961	7	6	1,974	189	2,163	1,836	8	238	2,082	125	6.81
		2701	Launceston (C) — Inner	140	—	15	155	27	182	122	15	17	154	18	14.75
		2703	Launceston (C) — Pt B	20,851	59	94	21,004	1,324	22,328	19,442	84	1,284	20,810	1,409	7.25
		2901	Longford (M) — Pt A	1,419	11	6	1,436	97	1,533	1,161	7	73	1,241	258	22.22
		4701	Westbury (M) — Pt A	1,167	33	5	1,205	66	1,271	829	4	45	878	338	40.77
			Total Subdivision	30,863	144	140	31,147	2,472	33,619	27,903	132	2,397	30,432	2,960	10.61
			Urban	27,647	103	131	27,881	1,789	29,670	24,653	116	1,659	26,428	2,994	12.14
			Rural	3,216	41	9	3,266	683	3,949	3,250	16	738	4,004	-34	-1.05
	10		Central North Statistical Subdivision												
		0102	Beaconsfield (M) — Pt B	371	—	—	371	46	417	279	—	29	308	92	32.97
		0900	Deloraine (M)	1,773	8	9	1,790	298	2,088	1,597	12	253	1,862	176	11.02
		1202	Evandale (M) — Pt B	177	—	4	181	49	230	180	1	23	204	-3	-1.67
		1502	George Town (M) — Pt B	242	—	—	242	359	601	199	—	355	554	43	21.61
		2704	Launceston (C) — Pt C	826	—	—	826	93	919	693	1	102	796	133	19.19
		2902	Longford (M) — Pt B	680	—	2	682	72	754	668	3	73	744	12	1.80
		4702	Westbury (M) — Pt B	1,425	—	4	1,429	120	1,549	1,242	4	114	1,360	183	14.73
			Total Subdivision	5,494	8	19	5,521	1,037	6,558	4,858	21	949	5,828	636	13.09
			Urban	1,180	5	8	1,193	104	1,297	1,092	9	82	1,183	88	8.06
			Rural	4,314	3	11	4,328	933	5,261	3,766	12	867	4,645	548	14.55
	15		North Eastern Statistical Subdivision												
		0600	Campbell Town (M)	500	—	7	507	140	647	492	4	138	634	8	1.63
		1300	Fingal (M)	968	—	7	975	275	1,250	968	6	310	1,284	17	4.99
		1400	Flinders (M)	358	—	6	364	113	477	341	3	110	454	—	—
		3400	Portland (M)	1,035	21	10	1,066	884	1,950	753	19	799	1,571	282	37.45
		3700	Ringarooma (M)	746	2	6	754	197	951	744	9	145	898	2	0.27
		3800	Ross (M)	170	1	2	173	78	251	167	1	81	249	3	1.80
		4000	Scottsdale (M)	1,582	8	6	1,596	349	1,945	1,414	8	317	1,739	168	11.88
			Total Subdivision	5,359	32	44	5,435	2,036	7,471	4,879	50	1,900	6,829	480	9.84
			Urban	1,513	15	14	1,542	404	1,946	1,332	18	356	1,706	181	13.59
			Rural	3,846	17	30	3,893	1,632	5,525	3,547	32	1,544	5,123	299	8.43
			Total Division	41,716	184	203	42,103	5,545	47,648	37,640	203	5,246	43,089	4,076	10.83
			Urban	30,340	123	153	30,616	2,297	32,913	27,077	143	2,097	29,317	3,263	12.05
			Rural	11,376	61	50	11,487	3,248	14,735	10,563	60	3,149	13,772	813	7.70

For footnotes see end of table.

TABLE C3. NUMBER OF DWELLINGS : STATISTICAL LOCAL AREAS WITHIN STATISTICAL DIVISIONS AND STATISTICAL SUBDIVISIONS,
TASMANIA, CENSUSES 1986 AND 1981—continued

Stat. Div. Code	Stat. Subdiv. Code	SLA Code	Area name	1986 Census					1981 Census					Intercensal variation		
				Occupied dwellings			Un-occupied dwellings	Total dwellings	Occupied dwellings			Un-occupied dwellings	Total dwellings	Occupied private dwellings	Percentage	
				Private dwellings	Caravans in parks (a)	Non-private dwellings (a)			Private dwellings	Non-private dwellings (a)	Un-occupied dwellings					
20			MERSEY - LYELL STATISTICAL DIVISION													
	05		Burnie - Devonport Statistical Subdivision													
		0501	Burnie (M) — Pt A	6,281	30	21	6,332	407	6,739	5,773	19	429	6,221	508	8.80	
		1000	Devonport (C)	8,347	87	26	8,460	583	9,043	7,567	26	510	8,103	780	10.31	
		2601	Latrobe (M) — Pt A	1,656	8	8	1,672	306	1,978	1,418	7	304	1,729	238	16.78	
		3201	Penguin (M) — Pt A	1,449	29	—	1,478	104	1,582	1,334	1	93	1,428	115	8.62	
		4501	Ulverstone (M) — Pt A	4,082	73	14	4,169	267	4,436	3,648	18	289	3,955	434	11.90	
		4801	Wynyard (M) — Pt A	3,477	46	16	3,539	495	4,034	3,144	19	434	3,597	333	10.59	
			Total Subdivision	25,292	273	85	25,650	2,162	27,812	22,884	90	2,059	25,033	2,408	10.52	
			Urban	22,397	243	80	22,720	1,699	24,419	19,996	79	1,634	21,709	2,401	12.01	
			Rural	2,895	30	5	2,930	463	3,393	2,888	11	425	3,324	7	0.24	
	10		North Western Rural Statistical Subdivision													
		0502	Burnie (M) — Pt B	622	—	—	622	27	649	590	—	30	620	32	5.42	
		0700	Circular Head (M)	2,507	7	17	2,531	538	3,069	2,356	9	455	2,820	151	6.41	
		2300	Kenish (M)	1,426	4	4	1,438	138	1,576	1,269	8	123	1,400	157	12.37	
		2400	King Island (M)	694	1	3	698	196	894	772	5	114	891	-78	-10.10	
		2402	Latrobe (M) — Pt B	376	—	—	376	57	433	329	—	67	396	47	14.29	
		3202	Penguin (M) — Pt B	302	—	—	302	31	333	266	—	31	297	36	13.53	
		4502	Ulverstone (M) — Pt B	571	—	—	571	29	600	489	—	39	528	82	16.77	
		4802	Wynyard (M) — Pt B	590	—	—	590	70	660	519	—	54	573	71	13.68	
			Total Subdivision	7,088	12	28	7,128	1,086	8,214	6,590	22	913	7,525	498	7.56	
			Urban	1,112	—	9	1,121	81	1,202	1,054	6	52	1,112	58	5.50	
			Rural	5,976	12	19	6,007	1,005	7,012	5,536	16	861	6,413	440	7.95	
	15		Western Statistical Subdivision													
		1800	Gormanston (M)	40	—	5	45	8	53	41	—	1	42	-1	-2.44	
		3500	Queenstown (M)	1,180	9	15	1,204	113	1,317	1,161	10	125	1,296	19	1.64	
		4300	Strahan (M)	188	10	6	204	111	315	136	2	16	154	52	38.24	
		4600	Waratah (M)	479	—	4	483	151	634	529	18	83	630	-50	-9.45	
		4900	Zeehan (M)	1,365	17	15	1,397	274	1,671	1,465	21	204	1,690	-100	-6.83	
			Total Subdivision	3,252	36	45	3,333	657	3,990	3,332	51	429	3,812	-80	-2.40	
			Urban	2,789	26	28	2,843	320	3,163	2,853	34	254	3,141	-64	-2.24	
			Rural	463	10	17	490	337	827	479	17	175	671	-16	-3.34	
			Total Division	35,632	321	158	36,111	3,905	40,016	32,806	163	3,401	36,370	2,826	8.61	
			Urban	26,298	269	117	26,684	2,100	28,784	23,903	119	1,940	25,962	2,395	10.02	
			Rural	9,334	52	41	9,427	1,805	11,232	8,903	44	1,461	10,408	431	4.84	

For footnotes see end of table.

TABLE C3. NUMBER OF DWELLINGS : STATISTICAL LOCAL AREAS WITHIN STATISTICAL DIVISIONS AND STATISTICAL SUBDIVISIONS,
TASMANIA, CENSUSES 1986 AND 1981—continued

Stat. Div. Code	Stat. Subdiv. Code	SLA Code	Area name	1986 Census					1981 Census					Intercensal variation	
				Occupied dwellings				Un-occupied dwellings	Occupied dwellings				Total dwellings	Occupied private dwellings	Percentage
				Private dwellings	Caravans in parks (a)	Non-private dwellings (a)	Total (b)		Private dwellings	Non-private dwellings (a)	Un-occupied dwellings	Total dwellings			
85			OFF-SHORE AREAS & MIGRATORY												
	01		Off-shore Areas & Migratory Statistical Subdivision												
		9779	Off-shore Areas & Migratory	2	—	31	33	—	33
			Total Subdivision	2	—	31	33	—	33
			Total Division	2	—	31	33	—	33
			TOTAL STATE	148,800	658	684	150,142	19,470	169,612	135,598	670	17,765	154,033	13,202	9.74
			Urban	112,619	488	466	113,573	8,088	121,661	103,217	470	7,478	111,165	9,402	9.11
			Rural	36,179	170	187	36,536	11,382	47,918	32,381	200	10,287	42,868	3,798	11.73
			Migratory	2	—	31	33	—	33

(a) In the 1981 Census, caravans etc. in caravan parks were considered to be part of a non-private dwelling (the caravan park); see Definitions in Section 3 of the Explanatory Notes. Therefore, 1986 Census non-private dwelling counts are not comparable with previous census counts. (b) Includes caravans etc. in caravan parks.

TABLE C4. NUMBER OF DWELLINGS : URBAN CENTRES AND (RURAL) LOCALITIES IN ALPHABETICAL ORDER, TASMANIA, CENSUSES 1986 AND 1981

Stat. Div. Code	Stat. Subdiv. Code	S.L.A. Code	Urban centre/(rural) locality name	1986 Census				1981 Census				Intercensal variation			
				Occupied dwellings				Occupied dwellings				Total dwellings	Occupied private dwellings	Percentage	
				Private dwellings	Caravans in parks (a)	Non-private dwellings (a)	Un-occupied dwellings	Private dwellings	Non-private dwellings (a)	Un-occupied dwellings	Total dwellings				
15	15	1300	Avoca (L)	82	—	1	11	94	—	—	—	—	—	—	—
15	05	0101	Beaconsfield	357	—	3	18	378	294	2	39	335	63	21.43	—
15	05	0101	Beauty Point	378	—	2	96	476	341	3	90	434	37	10.85	—
10	05	1600	Bicheno (H)	228	12	4	156	400	206	8	131	345	22	10.68	—
10	05	0200	Bothwell (L)	136	—	3	27	166	130	1	26	157	6	4.62	—
15	10	4702	Bracknell (L)	116	—	—	11	126	110	1	13	123	6	5.45	—
15	15	3700	Bransholm (L)	88	—	1	11	101	90	1	6	97	-2	-2.22	—
05	05	0301	Bridgewater	2,305	—	—	81	2,386	1,780	—	79	1,859	525	29.49	—
15	15	4000	Bridport (H)	401	—	3	253	657	342	2	242	586	59	17.25	—
20	05	0501(c)	Burnie-Somerset	7,106	46	22	471	7,645	6,565	19	465	7,049	541	8.24	—
10	05	3600	Campania (L)	75	—	—	4	79	—	—	—	—	—	—	—
15	15	0600	Campbell Town (L)	315	—	5	33	353	296	4	24	324	19	6.42	—
15	10	4702	Carrick (L)	110	—	—	7	117	91	—	8	99	19	20.88	—
05	05	0800	Cremorne (L)	119	—	—	71	190	104	—	76	180	15	14.42	—
15	10	2902	Cressy (L)	212	—	1	7	220	205	2	8	215	7	3.41	—
20	10	2400	Currie (L)	299	1	3	32	335	284	4	29	317	15	5.28	—
10	05	3300	Cygnets (L)	277	2	3	17	299	235	2	20	257	42	18.87	—
15	10	0900	Deloraine	728	5	6	71	810	683	8	54	745	45	6.59	—
20	05	1000	Devonport	7,772	81	25	531	8,409	7,015	25	483	7,523	757	10.79	—
15	05	2703	Dilston (L)	96	—	—	5	101	73	—	8	81	23	31.51	—
05	05	4101	Dodges Ferry (L)	403	3	2	555	963	258	2	501	761	145	56.20	—
10	05	1100	Dover (L)	134	3	2	29	168	186	3	60	249	-52	-27.96	—
10	05	4102	Dunally (L)	105	—	1	33	139	79	—	56	135	26	32.91	—
05	05	2501	Electrona (L)	63	—	—	4	67	61	—	5	66	2	3.28	—
15	05	1201	Evandale (L)	245	—	1	21	267	202	1	7	210	43	21.29	—
15	05	0101	Exeter (L)	112	—	1	13	126	104	1	8	113	8	7.69	—
15	15	1300	Fingal (L)	155	—	1	4	160	142	2	16	160	13	9.15	—
20	05	1000	Forth (L)	94	—	1	4	99	84	—	3	87	10	11.90	—
10	05	2200	Franklin (L)	138	—	2	10	150	134	4	4	142	4	2.99	—
20	05	4501	Gawler (L)	67	—	—	7	74	—	—	—	—	—	—	—
10	05	1100	Geeveston (L)	67	—	—	23	275	260	2	24	286	-8	-3.08	—
15	05	1501	George Town	252	—	5	70	1,726	1,580	4	112	1,696	71	4.49	—
20	10	2400	Grassy (L)	86	—	—	101	187	188	1	13	202	-102	-54.26	—
15	05	0101	Gravelly Beach (L)	212	—	—	15	227	189	—	13	202	23	12.17	—
15	05	4701	Hadsden	334	33	1	11	379	266	1	14	281	68	25.56	—
15	10	4702	Hagley (L)	60	—	—	5	66	60	1	2	63	—	—	—
20	05	3201	Heybridge (L)	144	4	—	12	160	145	1	8	154	-1	-0.69	—
05	05	(d)	Hobart	45,659	78	175	2,716	48,628	43,697	184	2,600	46,481	1,962	4.49	—
05	05	2501	Howden (L)	76	—	—	7	83	—	—	—	—	—	—	—
10	05	2200	Huonville-Ranelagh	475	—	1	27	503	463	—	30	493	12	2.59	—
10	05	1900	Kepton (L)	108	—	—	3	111	73	—	4	77	35	47.95	—
10	05	2502	Kettering (L)	100	—	—	10	110	88	—	13	101	12	13.64	—
05	05	2501	Kingston	181	—	2	208	3,816	2,762	2	155	2,919	844	30.56	—
15	05	0101	Lanena-Blackwall (L)	3,606	—	—	14	195	174	—	18	192	7	4.02	—
20	05	2601	Latrobe	826	—	5	46	877	717	4	40	761	109	15.20	—
05	05	0800	Lauderdale	763	—	1	69	833	672	—	66	738	13	1.54	—
15	05	(d)	Launceston	23,587	59	115	1,501	25,262	21,629	105	1,387	23,121	1,958	9.05	—
15	05	0101	Legana (L)	384	—	—	9	393	302	—	15	317	82	27.15	—
05	05	4101	Lewisham (L)	132	—	—	101	233	—	—	—	—	—	—	—
15	10	2704	Lilydale (L)	111	—	—	10	121	108	—	5	113	3	2.78	—

For footnotes see end of table.

TABLE C4 NUMBER OF DWELLINGS : URBAN CENTRES AND (RURAL) LOCALITIES IN ALPHABETICAL ORDER, TASMANIA, CENSUSES 1986 AND 1981—continued

Stat. Div. Code	Stat. Subdiv. Code	SLA Code	Urban centre/(rural) locality name	1986 Census					1981 Census					Intercensal variation	
				Occupied dwellings			Un-occupied dwellings	Total dwellings (b)	Occupied dwellings			Total dwellings	Occupied private dwellings	Percentage	
				Private dwellings	Caravans in parks (a)	Non-private dwellings (a)			Private dwellings	Non-private dwellings (a)	Un-occupied dwellings				
15 05	2901		Longford	848	11	4	53	916	683	6	46	735	165	24.16	
15 05	1501		Low Head (L)	152	7	1	111	271	109	2	104	215	43	39.45	
20 15	4600		Luína (L)	62	—	—	73	135	121	4	19	144	-59	-48.76	
05 05	2501		Margate (L)	191	—	—	3	194	151	—	3	154	40	26.49	
10 05	3002		Medviena (L)	115	1	—	26	142	126	2	24	152	-11	-8.73	
15 10	0900		Mole Creek (L)	99	—	1	12	112	99	2	18	119	—	—	
05 05	3001		New Norfolk	1,796	—	12	130	1,938	1,672	10	116	1,798	124	7.42	
10 05	4400		Nubeena	82	—	2	33	117	80	1	24	105	2	2.50	
10 05	3100		Outlands (L)	208	—	4	31	243	196	3	23	222	12	6.12	
10 05	4200		Orford (H)	188	—	1	254	443	157	3	212	372	31	19.75	
20 05	3201		Penguin	939	25	—	67	1,031	826	—	60	886	113	13.68	
15 05	2901		Perth	492	—	1	40	533	418	—	24	442	74	17.70	
05 05	0301		Pontville (L)	305	—	3	26	334	281	1	16	298	24	8.54	
20 05	2601		Port Sorell	414	8	3	234	659	316	2	231	549	98	31.01	
05 05	4101		Primrose Sands (L)	157	—	—	448	605	—	—	—	—	—	—	
20 15	3500		Queenstown	1,180	9	14	113	1,316	1,161	8	125	1,294	19	1.64	
20 10	2300		Railton (L)	289	—	—	14	303	274	1	21	296	15	5.47	
10 05	3600		Richmond (L)	236	14	2	14	266	205	2	17	224	31	15.12	
20 10	0502		Ridgley (L)	130	—	—	4	134	127	—	4	131	3	2.36	
15 15	3700		Ringarooma (L)	90	—	1	5	96	82	1	4	87	8	9.76	
20 15	4900		Rosebery	611	10	5	72	698	641	7	51	699	-30	-4.68	
15 15	3800		Ross (L)	107	1	1	19	128	4	103	1	22	126	4	3.88
15 15	1300		Rossarden (L)	59	—	—	34	93	106	—	69	175	-47	-44.34	
15 15	3400		St Helens	417	7	8	99	531	343	11	80	434	74	21.57	
15 15	1300		St Marys (L)	224	—	2	20	246	219	2	26	247	5	2.28	
20 15	4600		Savage River	288	—	—	33	323	285	7	33	325	3	1.05	
15 15	3400(e)		Seamander (L)	136	2	107	256	—	—	—	—	—	—	—	
15 15	4000		Scottsdale	695	10	3	52	758	647	5	34	686	48	7.42	
05 05	0800		Seven Mile Beach (L)	283	—	1	15	299	230	—	17	247	53	23.04	
20 10	2300		Sheffield (L)	289	4	4	39	336	276	5	21	302	13	4.71	
20 10	0700		Smithton	1,112	11	9	81	1,202	1,054	6	52	1,112	58	5.50	
05 05	2501		Snug (L)	229	—	—	16	256	212	1	15	228	17	8.02	
05 05	4101		Sorell-Midway Point	961	6	—	50	1,017	828	1	52	881	133	16.06	
05 05	0800		South Arm (L)	124	—	—	90	214	—	—	—	—	—	—	
20 10	0700		Stanley (L)	207	7	2	30	246	204	2	30	236	3	1.47	
20 15	4300		Strahan (L)	178	10	6	68	262	134	2	16	152	44	32.84	
20 05	3201		Sulphur Creek (L)	128	—	—	10	138	117	9	126	11	1	9.40	
10 05	1600		Swansea (L)	145	9	4	65	213	151	5	47	203	-6	-3.97	
10 05	2000		Tarraleah (L)	115	1	3	19	138	119	6	10	135	-4	-3.36	
10 05	4200		Triabunna (L)	262	6	3	29	300	263	9	20	292	-1	-0.38	
20 15	4900		Tullah	235	—	2	40	277	293	3	17	313	-58	-19.80	
20 05	4501		Turners Beach (H)	286	46	—	35	357	261	3	23	287	25	9.58	
20 05	4501		Ulverstone	3,479	27	14	215	3,755	3,140	14	247	3,401	339	10.80	
20 15	4600		Waratah (L)	118	—	2	37	155	115	4	24	143	3	2.61	
15 10	4702		Westbury	452	—	2	33	487	409	1	28	438	43	10.51	
10 05	2502		Woodbridge (L)	85	—	—	3	88	76	2	6	84	9	11.84	
20 05	4801		Wynyard	1,575	10	11	110	1,706	1,420	12	108	1,540	155	10.92	
20 15	4900		Zeehan	475	7	5	62	549	474	8	28	510	1	0.21	

(a) In the 1981 Census, caravans etc. in caravan parks were considered to be part of a non-private dwelling (the caravan park), see Definitions in Section 3 of the Explanatory Notes. Therefore, 1986 Census non-private dwelling counts are not comparable with previous census counts. (b) Includes caravans etc. in caravan parks. (c) Urban centre (rural) locality is not contained wholly within this SLA. (d) Urban centre is contained within multiple SLAs.

TABLE C5. NUMBER OF PERSONS: URBAN CENTRES AND (RURAL) LOCALITIES IN POPULATION SIZE ORDER, TASMANIA, CENSUSES 1986 AND 1981

Urban centre/ (rural) locality	1986 Census		1981 Census		Urban centre/ (rural) locality	1986 Census		1981 Census	
	Persons	Persons	Persons	Persons		Persons	Persons	Persons	Persons
Hobart	127,106	128,603	Bridport (H)	980	885	Maydena (L)	384	461	
Launceston	66,286	64,555	Pontville (L)	962	908	Primrose Sands (L)	384	..	
Devonport	22,645	21,424	Sheffield (L)	934	945	Bothwell (L)	369	356	
Burnie-Somerset	20,665	20,368	Railton (L)	906	857	Lilydale (L)	357	308	
Kingston	10,932	8,556	Turners Beach (H)	900	842	Bracknell (L)	355	347	
Ulverstone	10,055	9,413	Triabunna (L)	883	924	Exeter (L)	344	353	
Bridgewater	8,654	6,880	Campbell Town (L)	867	879	South Arm (L)	343	..	
New Norfolk	6,152	6,243	Seven Mile Beach (L)	847	682	Carriek (L)	340	291	
George Town	5,315	5,592	Cygnets (L)	832	715	Waratah (L)	334	342	
Wynyard	4,705	4,582	Currie (L)	794	859	Sulphur Creek (L)	331	367	
Queenstown	3,593	3,714	Geeveston (L)	753	860	Cremorne (L)	327	275	
Smithton	3,414	3,378	Evandale (L)	723	614	Kempton (L)	324	226	
Sorell-Midway Point	2,882	2,544	Snug (L)	714	684	Lewisham (L)	320	..	
Penguin	2,801	2,616	Richmond (L)	693	587	Kettering (L)	318	288	
Latrobe	2,578	2,401	St Marys (L)	668	653	Forth (L)	288	273	
Longford	2,437	2,027	Bichenno (H)	661	674	Mole Creek (L)	288	303	
Lauderdale	2,353	2,117	Cressy (L)	630	640	Dunalley (L)	286	203	
Rosebery	2,102	2,675	Stanley (L)	588	603	Ross (L)	283	289	
Deloraine	1,997	1,923	Gravelly Beach (L)	583	535	Dilston (L)	281	223	
Scottsdale	1,983	2,002	Margate (L)	557	476	Branxholm (L)	264	273	
Zeehan	1,610	1,750	Strahan (L)	516	402	Ringarooma (L)	262	223	
Perth	1,352	1,229	Oatlands (L)	514	545	Woodbridge (L)	260	259	
Huonville-Ranelagh	1,305	1,347	Lanena-Blackwall (L)	478	439	Hagley (L)	254	232	
Legana (L)	1,237	964	Tarraleah (L)	474	498	Grassy (L)	253	780	
Westbury	1,222	1,161	Orford (H)	458	378	Electrona (L)	233	227	
Port Sorell	1,173	859	Franklin (L)	453	479	Gawler (L)	233	..	
St Helens	1,149	1,005	Fingal (L)	443	424	Avoca (L)	226	..	
Tullah	1,117	1,894	Ridgley (L)	427	452	Nubeena (L)	220	225	
Dodges Ferry (L)	1,091	743	Low Head (L)	416	339	Howden (L)	213	..	
Hadspen	1,089	908	Swansen (L)	411	428	Campania (L)	207	..	
Beaconsfield	1,064	898	Heybridge (L)	396	395	Rossarden (L) *	191	365	
Beauty Point	1,064	998	Dover (L)	394	570	Luina (L) *	162	522	
Savage River	1,058	1,141	Scamander (L)	386	..				

* Was expected to contain 200 or more persons in 1986.

APPENDIX A

CHANGES TO GEOGRAPHIC AREAS,
CENSUS 1981 TO CENSUS 1986

LEGAL LOCAL GOVERNMENT AREA CHANGES (EXCLUDING AMALGAMATIONS)

<i>Area</i>	<i>Nature of change</i>	<i>Date of change</i>
Devonport(C)	Gained small area from Ulverstone(M) and Latrobe(M)	19-05-83
Latrobe(M)	Lost small area to Devonport(C)	19-05-83
Ulverstone(M)	Lost small area to Devonport(C)	19-05-83

LEGAL LOCAL GOVERNMENT AREA CHANGES RESULTING FROM AMALGAMATIONS

<i>New Legal Local Government Area</i>	<i>Former Legal Local Government Area</i>	<i>Date of change</i>
Launceston(C)	Lilydale(M)	08-05-85
	St Leonards(M)	08-05-85
	Launceston(C)	08-05-85

APPENDIX B

CENSUS GEOGRAPHIC AREAS — DEFINITIONS

A. AUSTRALIAN STANDARD GEOGRAPHICAL CLASSIFICATION (ASGC)

The *Australian Standard Geographical Classification* (1216.0) is a new geographic classification used for the dissemination of 1986 Census data. It incorporates a number of hierarchic structures of geographic areas (also referred to as 'spatial units') and defines the individual structures and the area types of which each structure is composed. Each geographic area in the classification is identified by a unique numeric code.

The ASGC has been adopted as the standard geographic classification for ABS output. This will ensure greater comparability of statistics within the ABS and standardisation of terminology.

Abbreviated definitions of other ASGC geographic areas which are used in 1986 Census output follow below. More detailed definitions can be found in *The 1986 Census Dictionary* (2174.0) or *Census 86 — Australian Standard Geographical Classification: Geographic Code List* (2188.0).

Collection districts (CDs)

These are the smallest type of geographic area in the ASGC and are the building blocks of which all other ASGC geographic areas are composed. They have been designed for use in population censuses and, in aggregate, cover the whole of Australia without gaps or overlaps.

States and Territories

These consist of two or more statistical divisions and cover the whole of Australia (as defined for statistical purposes) without gaps or overlaps. They encompass the geographic areas of the six Australian States and two mainland Territories.

Statistical districts

These consist of one or more statistical subdivisions and represent large urban areas of Australia outside State capital city statistical divisions. Because of their nature they can and, in some cases, do straddle statistical division and State/Territory boundaries. An example is the 'Gold Coast-Tweed' Statistical District which encompasses an urban area which lies partly in the State of Queensland and partly in the State of New South Wales.

Statistical regions

These consist of one or more SLAs and cover, in aggregate, the whole of Australia without gaps or overlaps. They were designed primarily as geographic areas containing sufficient population to be suitable for the presentation of both population census and labour force statistics, within the frameworks for standard statistical outputs from these collections. The smallest region in terms of population is the Northern Territory, which had a census count of 154,848 on 30 June 1986.

Major statistical regions

These consist of one or more statistical regions and cover, in aggregate, the whole of Australia without gaps or overlaps. They do not cross State or Territory boundaries and serve the same purpose as statistical regions, though at a broader geographic (i.e. capital city statistical division versus balance of state) level. However, even this dissection could not, due to population size limitations, be implemented in the case of Tasmania, the Northern Territory and the Australian Capital Territory, each of which equates with a major statistical region.

Sections of State

Within a State or Territory, each section of State represents an aggregation of non-contiguous geographic areas with particular urban or rural characteristics. The sections of State within each State and Territory are the following:

Major Urban — all urban centres with a population of 100,000 and over;

Other Urban — all urban centres with a population of 1,000 to 99,999 and known holiday resorts of less population if they contain 250 or more dwellings, of which at least 100 are occupied on census night;

Locality — all population clusters of 200 to 999 persons; and

Rural Balance — the remainder of the State Territory.

The above section of State categories can be used in conjunction with other CD-based ASGC geographic areas to show section of State components within, say, statistical subdivisions or statistical divisions.

In addition to the above section of State categories, persons who were enumerated on off-shore oil rigs, drilling platforms and the like, aboard ship in Australian waters, or on an overnight journey by train or bus were included in an additional category, off-shore areas and migratory. There is one such category for each State and the Northern Territory.

B. NON-ASGC AREAS

Census data are also available for Commonwealth and State electoral divisions and postcode areas. A postcode and a Commonwealth and State electoral division code is assigned to each CD. Where a CD is dissected by a postcode or electoral division boundary, the entire CD was allocated to the postcode or electoral division in which the greater part of the CD population was estimated to lie.

IN CONFIDENCE
 REDUCED
 SIZE



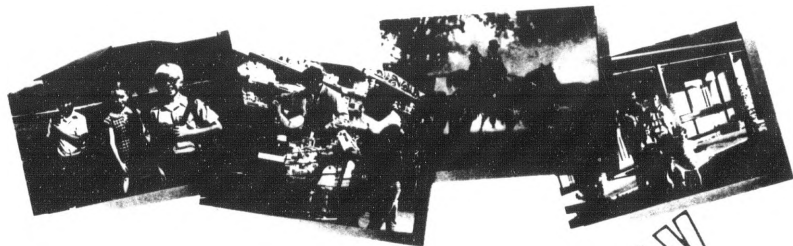
AUSTRALIAN BUREAU OF STATISTICS

Census Form 1

State	
Div	
S Div	
C D	
Rec No	

30 JUNE 1986

Census 86



Household Form

Dear Householder,

Census Night is on Monday, 30 June 1986.

The Census is like a stock take of our nation carried out at the one time, Census Night. Statistics from it show how many people there are in each part of Australia, what they do and how they live. The Census is the only practical way to get this information and is essential for planning our future.

So the Census helps to make a better Australia.

The Census is authorised by the *Census and Statistics Act 1905* which provides for the compulsory completion of this form and its return to your Census Collector. The same Act also protects your privacy. It forbids the publication of, or passing to anyone outside the Statistics Bureau, any information or statistics that could identify any person. Under no circumstances are any names or addresses kept.

To help you, below is an easy guide to filling in your Census Form. Use it with your Census 86 booklet.

Who to include on your form

In question 1, list all persons (including babies) who spent the night of Monday, 30 June 1986, in this household. Include any persons who returned on Tuesday, 1 July 1986, without having been counted somewhere else. USE ONE COLUMN FOR EACH PERSON.

If there are more than 8 persons in this household, ask your Census Collector for extra Personal Forms.

What is a Household?

Persons living and eating together as a domestic unit are a household. A person who lives alone is also a household. If there is more than one household at this address, ask your Census Collector for as many extra Household Forms as you need. A SEPARATE FORM MUST BE USED FOR EACH HOUSEHOLD.

How to answer each question

Please use black or blue ball point pen or ink.

Read everything carefully. Give your answer, then go to the next question.

Most questions only need a tick in the answer box. Numbers and letters alongside the boxes are only for processing purposes.

If you do not know the exact answer, give the best answer you can.

Your privacy.

If any person in this household prefers a separate Census Form for privacy reasons, ask your Census Collector for a Personal Form and a Privacy Envelope. For that person, enter name, sex, relationship to Person 1 and write 'PF' in the age question on this form. The completed Personal Form should be sealed in the envelope and given unopened to the collector.

You may also ask for a Privacy Envelope if you do not want your collector to see your completed Census Form.

Finished?

After filling in the Census Form, please sign it and write the household address in the address panel below.

Your collector will return as soon as possible after Monday, 30 June 1986, for the completed Census Form.

If you have any difficulty filling out this form, please refer to your Census 86 booklet. If you still have a problem, ask your Census Collector for help or phone the Census Hotline on _____.

Thank you for your help.

AUSTRALIAN STATISTICIAN

Signature of Person	_____
Address No. and street	_____
Suburb, town or locality	_____
Postcode	_____
Date	_____

OFFICE USE ONLY		
SEF	01	
AC		

COLLECTOR'S USE ONLY		
Males	Females	Persons

Signature of Collector

Please complete one separate column for each person.

For each person who uses a Personal Form for privacy reasons, complete questions 1, 2 and 4 and write "P.F." in question 3 on the Form.

1. Name of each person (INCLUDING VISITORS) who spent the night of Monday, 30 June 1986 in this household:	PERSON 1	PERSON 2	PERSON 3
	<ul style="list-style-type: none"> Record details for all adults, children, babies and VISITORS. Include any person who returned on Tuesday, 1 July 1986, without having been counted elsewhere. Enter the householder or any adult household member as "Person 1" and, if present, the spouse/partner as "Person 2". 	Christian or given name Surname	Christian or given name Surname
2. Sex: <ul style="list-style-type: none"> Tick one box for each person (for example <input checked="" type="checkbox"/>). 	7 <input type="checkbox"/> Male 8 <input type="checkbox"/> Female	7 <input type="checkbox"/> Male 8 <input type="checkbox"/> Female	7 <input type="checkbox"/> Male 8 <input type="checkbox"/> Female
3. Age: <ul style="list-style-type: none"> In years and completed months. If age is less than one year write "0" years and the number of completed months. years months years months years months

4. What is each person's relationship to Person 1/Person 2?	PERSON 1	PERSON 2	PERSON 3
	<ul style="list-style-type: none"> Examples of other relationships: mother, son-in-law, granddaughter, uncle, boarder, visitor, co-tenant, flatmate, etc. Tick one box for each person (for example A <input checked="" type="checkbox"/>). 	A <input type="checkbox"/> Husband/Wife of Person 1 B <input type="checkbox"/> De facto partner of Person 1 C <input type="checkbox"/> Child of Person 1 D <input type="checkbox"/> Child of Person 2 E <input type="checkbox"/> Stepchild of Person 1 F <input type="checkbox"/> Other relationship to Person 1 Please state	A <input type="checkbox"/> Husband/Wife of Person 1 B <input type="checkbox"/> De facto partner of Person 1 C <input type="checkbox"/> Child of both Person 1 and Person 2 D <input type="checkbox"/> Child of Person 1 only E <input type="checkbox"/> Child of Person 2 only F <input type="checkbox"/> Other relationship to Person 2 Please state
5. What is each person's present marital status? 1 <input type="checkbox"/> Never married 2 <input type="checkbox"/> Married 3 <input type="checkbox"/> Separated but not divorced 4 <input type="checkbox"/> Divorced 5 <input type="checkbox"/> Widowed	1 <input type="checkbox"/> Never married 2 <input type="checkbox"/> Married 3 <input type="checkbox"/> Separated but not divorced 4 <input type="checkbox"/> Divorced 5 <input type="checkbox"/> Widowed	1 <input type="checkbox"/> Never married 2 <input type="checkbox"/> Married 3 <input type="checkbox"/> Separated but not divorced 4 <input type="checkbox"/> Divorced 5 <input type="checkbox"/> Widowed	1 <input type="checkbox"/> Never married 2 <input type="checkbox"/> Married 3 <input type="checkbox"/> Separated but not divorced 4 <input type="checkbox"/> Divorced 5 <input type="checkbox"/> Widowed
6. Where does each person usually live? <ul style="list-style-type: none"> "Usual" residence is that address at which a person has lived or intends to live for a total of 6 months or more in 1986. For persons who now have no usual residence, regard this dwelling as their usual residence and tick box 7. For boarders at boarding school or college, give address of school or college. If usual residence is overseas, tick box 8 and write "O/S" → 	7 <input type="checkbox"/> At the address shown on the front of this form 8 <input type="checkbox"/> Elsewhere If "Elsewhere" tick box 8 and print usual address. No. and street Suburb, town or locality Name of local council State Postcode	7 <input type="checkbox"/> At the address shown on the front of this form 8 <input type="checkbox"/> Elsewhere If "Elsewhere" tick box 8 and print usual address. No. and street Suburb, town or locality Name of local council State Postcode	7 <input type="checkbox"/> At the address shown on the front of this form 8 <input type="checkbox"/> Elsewhere If "Elsewhere" tick box 8 and print usual address. No. and street Suburb, town or locality Name of local council State Postcode
7. Where was each person's usual residence one year ago (i.e. at 30 June 1985)? <ul style="list-style-type: none"> If the person is less than one year old, write "N/A". For persons who had no usual residence on 30 June 1985, give the address at which they were then living. If usual residence was overseas, tick box 2 and write "O/S" → 	1 <input type="checkbox"/> Same as in question 6 2 <input type="checkbox"/> Elsewhere If "Elsewhere" tick box 2 and print usual address one year ago. No. and street Suburb, town or locality Name of local council State Postcode	1 <input type="checkbox"/> Same as in question 6 2 <input type="checkbox"/> Elsewhere If "Elsewhere" tick box 2 and print usual address one year ago. No. and street Suburb, town or locality Name of local council State Postcode	1 <input type="checkbox"/> Same as in question 6 2 <input type="checkbox"/> Elsewhere If "Elsewhere" tick box 2 and print usual address one year ago. No. and street Suburb, town or locality Name of local council State Postcode
8. Where was each person's usual residence five years ago (i.e. at 30 June 1981)? <ul style="list-style-type: none"> If the person is less than five years old, write "N/A". For persons who had no usual residence on 30 June 1981, give the address at which they were then living. If usual residence was overseas, tick box 5 and write "O/S" → 	3 <input type="checkbox"/> Same as in question 6 4 <input type="checkbox"/> Same as in question 7 5 <input type="checkbox"/> Elsewhere If "Elsewhere" tick box 5 and print usual address five years ago. No. and street Suburb, town or locality Name of local council State Postcode	3 <input type="checkbox"/> Same as in question 6 4 <input type="checkbox"/> Same as in question 7 5 <input type="checkbox"/> Elsewhere If "Elsewhere" tick box 5 and print usual address five years ago. No. and street Suburb, town or locality Name of local council State Postcode	3 <input type="checkbox"/> Same as in question 6 4 <input type="checkbox"/> Same as in question 7 5 <input type="checkbox"/> Elsewhere If "Elsewhere" tick box 5 and print usual address five years ago. No. and street Suburb, town or locality Name of local council State Postcode

<p>9. Is the person of Aboriginal or Torres Strait Islander origin?</p> <ul style="list-style-type: none"> For persons of mixed origin, indicate the one to which they consider themselves to belong. 	<p>4 <input type="checkbox"/> No 5 <input type="checkbox"/> Yes, Aboriginal 6 <input type="checkbox"/> Yes, Torres Strait Islander</p>	<p>4 <input type="checkbox"/> No 5 <input type="checkbox"/> Yes, Aboriginal 6 <input type="checkbox"/> Yes, Torres Strait Islander</p>	<p>4 <input type="checkbox"/> No 5 <input type="checkbox"/> Yes, Aboriginal 6 <input type="checkbox"/> Yes, Torres Strait Islander</p>
<p>10. Where was each person born?</p>	<p>1 <input type="checkbox"/> Australia 2 <input type="checkbox"/> Overseas ↓ Print country of birth</p> <p>.....</p> <p>.....</p> <p><input type="text"/> <input type="text"/></p>	<p>1 <input type="checkbox"/> Australia 2 <input type="checkbox"/> Overseas ↓ Print country of birth</p> <p>.....</p> <p>.....</p> <p><input type="text"/> <input type="text"/></p>	<p>1 <input type="checkbox"/> Australia 2 <input type="checkbox"/> Overseas ↓ Print country of birth</p> <p>.....</p> <p>.....</p> <p><input type="text"/> <input type="text"/></p>
<p>11. When did the person first arrive in Australia?</p>	<p>Year 19</p>	<p>Year 19</p>	<p>Year 19</p>
<p>12. Where was each person's father born?</p>	<p>3 <input type="checkbox"/> Australia 4 <input type="checkbox"/> Overseas ↓ Print father's country of birth</p> <p>.....</p> <p>.....</p> <p><input type="text"/> <input type="text"/></p>	<p>3 <input type="checkbox"/> Australia 4 <input type="checkbox"/> Overseas ↓ Print father's country of birth</p> <p>.....</p> <p>.....</p> <p><input type="text"/> <input type="text"/></p>	<p>3 <input type="checkbox"/> Australia 4 <input type="checkbox"/> Overseas ↓ Print father's country of birth</p> <p>.....</p> <p>.....</p> <p><input type="text"/> <input type="text"/></p>
<p>13. Where was each person's mother born?</p>	<p>5 <input type="checkbox"/> Australia 6 <input type="checkbox"/> Overseas ↓ Print mother's country of birth</p> <p>.....</p> <p>.....</p> <p><input type="text"/> <input type="text"/></p>	<p>5 <input type="checkbox"/> Australia 6 <input type="checkbox"/> Overseas ↓ Print mother's country of birth</p> <p>.....</p> <p>.....</p> <p><input type="text"/> <input type="text"/></p>	<p>5 <input type="checkbox"/> Australia 6 <input type="checkbox"/> Overseas ↓ Print mother's country of birth</p> <p>.....</p> <p>.....</p> <p><input type="text"/> <input type="text"/></p>
<p>14. Is the person an Australian citizen?</p> <ul style="list-style-type: none"> For persons born in Australia, naturalised, registered or granted Australian citizenship, tick box 7. 	<p>7 <input type="checkbox"/> Yes, Australian citizen 8 <input type="checkbox"/> No</p>	<p>7 <input type="checkbox"/> Yes, Australian citizen 8 <input type="checkbox"/> No</p>	<p>7 <input type="checkbox"/> Yes, Australian citizen 8 <input type="checkbox"/> No</p>
<p>15. What is each person's ancestry?</p> <ul style="list-style-type: none"> For example, Greek, English, Indian, Armenian, Aboriginal, Chinese etc. 	<p>Ancestry</p> <p>.....</p> <p>.....</p> <p><input type="text"/> <input type="text"/> <input type="text"/></p>	<p>Ancestry</p> <p>.....</p> <p>.....</p> <p><input type="text"/> <input type="text"/> <input type="text"/></p>	<p>Ancestry</p> <p>.....</p> <p>.....</p> <p><input type="text"/> <input type="text"/> <input type="text"/></p>
<p>16. What is each person's religious denomination?</p> <ul style="list-style-type: none"> This question is optional. If no religion write "None". 	<p>Religion</p> <p>.....</p> <p>.....</p> <p><input type="text"/> <input type="text"/></p>	<p>Religion</p> <p>.....</p> <p>.....</p> <p><input type="text"/> <input type="text"/></p>	<p>Religion</p> <p>.....</p> <p>.....</p> <p><input type="text"/> <input type="text"/></p>

4	5	6	7	8
<input type="checkbox"/> No <input type="checkbox"/> Yes, Aboriginal <input type="checkbox"/> Yes, Torres Strait Islander	<input type="checkbox"/> No <input type="checkbox"/> Yes, Aboriginal <input type="checkbox"/> Yes, Torres Strait Islander	<input type="checkbox"/> No <input type="checkbox"/> Yes, Aboriginal <input type="checkbox"/> Yes, Torres Strait Islander	<input type="checkbox"/> No <input type="checkbox"/> Yes, Aboriginal <input type="checkbox"/> Yes, Torres Strait Islander	<input type="checkbox"/> No <input type="checkbox"/> Yes, Aboriginal <input type="checkbox"/> Yes, Torres Strait Islander
<input type="checkbox"/> Australia <input type="checkbox"/> Overseas ↓ Print country of birth <input type="text"/> <input type="text"/>	<input type="checkbox"/> Australia <input type="checkbox"/> Overseas ↓ Print country of birth <input type="text"/> <input type="text"/>	<input type="checkbox"/> Australia <input type="checkbox"/> Overseas ↓ Print country of birth <input type="text"/> <input type="text"/>	<input type="checkbox"/> Australia <input type="checkbox"/> Overseas ↓ Print country of birth <input type="text"/> <input type="text"/>	<input type="checkbox"/> Australia <input type="checkbox"/> Overseas ↓ Print country of birth <input type="text"/> <input type="text"/>
Year 19	Year 19	Year 19	Year 19	Year 19
<input type="checkbox"/> Australia <input type="checkbox"/> Overseas ↓ Print father's country of birth <input type="text"/> <input type="text"/>	<input type="checkbox"/> Australia <input type="checkbox"/> Overseas ↓ Print father's country of birth <input type="text"/> <input type="text"/>	<input type="checkbox"/> Australia <input type="checkbox"/> Overseas ↓ Print father's country of birth <input type="text"/> <input type="text"/>	<input type="checkbox"/> Australia <input type="checkbox"/> Overseas ↓ Print father's country of birth <input type="text"/> <input type="text"/>	<input type="checkbox"/> Australia <input type="checkbox"/> Overseas ↓ Print father's country of birth <input type="text"/> <input type="text"/>
<input type="checkbox"/> Australia <input type="checkbox"/> Overseas ↓ Print mother's country of birth <input type="text"/> <input type="text"/>	<input type="checkbox"/> Australia <input type="checkbox"/> Overseas ↓ Print mother's country of birth <input type="text"/> <input type="text"/>	<input type="checkbox"/> Australia <input type="checkbox"/> Overseas ↓ Print mother's country of birth <input type="text"/> <input type="text"/>	<input type="checkbox"/> Australia <input type="checkbox"/> Overseas ↓ Print mother's country of birth <input type="text"/> <input type="text"/>	<input type="checkbox"/> Australia <input type="checkbox"/> Overseas ↓ Print mother's country of birth <input type="text"/> <input type="text"/>
<input type="checkbox"/> Yes, Australian citizen <input type="checkbox"/> No	<input type="checkbox"/> Yes, Australian citizen <input type="checkbox"/> No	<input type="checkbox"/> Yes, Australian citizen <input type="checkbox"/> No	<input type="checkbox"/> Yes, Australian citizen <input type="checkbox"/> No	<input type="checkbox"/> Yes, Australian citizen <input type="checkbox"/> No
Ancestry <input type="text"/> <input type="text"/> <input type="text"/>	Ancestry <input type="text"/> <input type="text"/> <input type="text"/>	Ancestry <input type="text"/> <input type="text"/> <input type="text"/>	Ancestry <input type="text"/> <input type="text"/> <input type="text"/>	Ancestry <input type="text"/> <input type="text"/> <input type="text"/>
Religion <input type="text"/> <input type="text"/>	Religion <input type="text"/> <input type="text"/>	Religion <input type="text"/> <input type="text"/>	Religion <input type="text"/> <input type="text"/>	Religion <input type="text"/> <input type="text"/>

17. Does the person speak a language other than English at home?

5 No, speaks only English

6 Yes

If yes, please print language spoken

5 No, speaks only English

6 Yes

If yes, please print language spoken

5 No, speaks only English

6 Yes

If yes, please print language spoken

Answer questions 18 and 21 for all persons who have ever been married.

18. How well does the person speak English?

1 Very well

2 Well

3 Not well

4 Not at all

1 Very well

2 Well

3 Not well

4 Not at all

1 Very well

2 Well

3 Not well

4 Not at all

19. Is the person attending a school or any other educational institution?

* Include external or correspondence students.

5 No

6 Yes, full-time student

7 Yes, part-time student

Please tick box corresponding to type of educational institution being attended.

01 Pre-school

Infants/Primary school

02 Government

03 Non-Government

Secondary school

04 Government

05 Non-Government

Tertiary institution

06 Technical and Further Education (TAFE) College

07 College of Advanced Education (CAE)

08 University

09 Other institution

Please state type

5 No

6 Yes, full-time student

7 Yes, part-time student

Please tick box corresponding to type of educational institution being attended.

01 Pre-school

Infants/Primary school

02 Government

03 Non-Government

Secondary school

04 Government

05 Non-Government

Tertiary institution

06 Technical and Further Education (TAFE) College

07 College of Advanced Education (CAE)

08 University

09 Other institution

Please state type

5 No

6 Yes, full-time student

7 Yes, part-time student

Please tick box corresponding to type of educational institution being attended.

01 Pre-school

Infants/Primary school

02 Government

03 Non-Government

Secondary school

04 Government

05 Non-Government

Tertiary institution

06 Technical and Further Education (TAFE) College

07 College of Advanced Education (CAE)

08 University

09 Other institution

Please state type

Answer questions 20 and 21 for all persons who have ever been married.

20. In what year was the person first married?

Year

19.....

Year

19.....

Year

19.....

21. Has the person been married more than once?

1 No, married only once

2 Yes

1 No, married only once

2 Yes

1 No, married only once

2 Yes

4	5	6	7	8
<p><input type="checkbox"/> No, speaks only English</p> <p>6 <input type="checkbox"/> Yes</p> <p>↓</p> <p>If yes, please print language spoken</p> <p>_____</p> <p>_____</p> <p><input type="checkbox"/> <input type="checkbox"/></p>	<p><input type="checkbox"/> No, speaks only English</p> <p>6 <input type="checkbox"/> Yes</p> <p>↓</p> <p>If yes, please print language spoken</p> <p>_____</p> <p>_____</p> <p><input type="checkbox"/> <input type="checkbox"/></p>	<p><input type="checkbox"/> No, speaks only English</p> <p>6 <input type="checkbox"/> Yes</p> <p>↓</p> <p>If yes, please print language spoken</p> <p>_____</p> <p>_____</p> <p><input type="checkbox"/> <input type="checkbox"/></p>	<p><input type="checkbox"/> No, speaks only English</p> <p>6 <input type="checkbox"/> Yes</p> <p>↓</p> <p>If yes, please print language spoken</p> <p>_____</p> <p>_____</p> <p><input type="checkbox"/> <input type="checkbox"/></p>	<p><input type="checkbox"/> No, speaks only English</p> <p>6 <input type="checkbox"/> Yes</p> <p>↓</p> <p>If yes, please print language spoken</p> <p>_____</p> <p>_____</p> <p><input type="checkbox"/> <input type="checkbox"/></p>
<p>1 <input type="checkbox"/> Very well</p> <p>2 <input type="checkbox"/> Well</p> <p>3 <input type="checkbox"/> Not well</p> <p>4 <input type="checkbox"/> Not at all</p>	<p>1 <input type="checkbox"/> Very well</p> <p>2 <input type="checkbox"/> Well</p> <p>3 <input type="checkbox"/> Not well</p> <p>4 <input type="checkbox"/> Not at all</p>	<p>1 <input type="checkbox"/> Very well</p> <p>2 <input type="checkbox"/> Well</p> <p>3 <input type="checkbox"/> Not well</p> <p>4 <input type="checkbox"/> Not at all</p>	<p>1 <input type="checkbox"/> Very well</p> <p>2 <input type="checkbox"/> Well</p> <p>3 <input type="checkbox"/> Not well</p> <p>4 <input type="checkbox"/> Not at all</p>	<p>1 <input type="checkbox"/> Very well</p> <p>2 <input type="checkbox"/> Well</p> <p>3 <input type="checkbox"/> Not well</p> <p>4 <input type="checkbox"/> Not at all</p>
<p>5 <input type="checkbox"/> No</p> <p>6 <input type="checkbox"/> Yes, full-time student</p> <p>7 <input type="checkbox"/> Yes, part-time student</p> <p>↓</p> <p>Please tick box corresponding to type of educational institution being attended</p> <p>01 <input type="checkbox"/> Pre-school</p> <p>Infants/Primary school</p> <p>02 <input type="checkbox"/> Government</p> <p>03 <input type="checkbox"/> Non-Government</p> <p>Secondary school</p> <p>04 <input type="checkbox"/> Government</p> <p>05 <input type="checkbox"/> Non-Government</p> <p>Tertiary institution</p> <p>06 <input type="checkbox"/> Technical and Further Education (TAFE) College</p> <p>07 <input type="checkbox"/> College of Advanced Education (CAE)</p> <p>08 <input type="checkbox"/> University</p> <p>09 <input type="checkbox"/> Other institution</p> <p>↓</p> <p>Please state type</p>	<p>5 <input type="checkbox"/> No</p> <p>6 <input type="checkbox"/> Yes, full-time student</p> <p>7 <input type="checkbox"/> Yes, part-time student</p> <p>↓</p> <p>Please tick box corresponding to type of educational institution being attended</p> <p>01 <input type="checkbox"/> Pre-school</p> <p>Infants/Primary school</p> <p>02 <input type="checkbox"/> Government</p> <p>03 <input type="checkbox"/> Non-Government</p> <p>Secondary school</p> <p>04 <input type="checkbox"/> Government</p> <p>05 <input type="checkbox"/> Non-Government</p> <p>Tertiary institution</p> <p>06 <input type="checkbox"/> Technical and Further Education (TAFE) College</p> <p>07 <input type="checkbox"/> College of Advanced Education (CAE)</p> <p>08 <input type="checkbox"/> University</p> <p>09 <input type="checkbox"/> Other institution</p> <p>↓</p> <p>Please state type</p>	<p>5 <input type="checkbox"/> No</p> <p>6 <input type="checkbox"/> Yes, full-time student</p> <p>7 <input type="checkbox"/> Yes, part-time student</p> <p>↓</p> <p>Please tick box corresponding to type of educational institution being attended</p> <p>01 <input type="checkbox"/> Pre-school</p> <p>Infants/Primary school</p> <p>02 <input type="checkbox"/> Government</p> <p>03 <input type="checkbox"/> Non-Government</p> <p>Secondary school</p> <p>04 <input type="checkbox"/> Government</p> <p>05 <input type="checkbox"/> Non-Government</p> <p>Tertiary institution</p> <p>06 <input type="checkbox"/> Technical and Further Education (TAFE) College</p> <p>07 <input type="checkbox"/> College of Advanced Education (CAE)</p> <p>08 <input type="checkbox"/> University</p> <p>09 <input type="checkbox"/> Other institution</p> <p>↓</p> <p>Please state type</p>	<p>5 <input type="checkbox"/> No</p> <p>6 <input type="checkbox"/> Yes, full-time student</p> <p>7 <input type="checkbox"/> Yes, part-time student</p> <p>↓</p> <p>Please tick box corresponding to type of educational institution being attended</p> <p>01 <input type="checkbox"/> Pre-school</p> <p>Infants/Primary school</p> <p>02 <input type="checkbox"/> Government</p> <p>03 <input type="checkbox"/> Non-Government</p> <p>Secondary school</p> <p>04 <input type="checkbox"/> Government</p> <p>05 <input type="checkbox"/> Non-Government</p> <p>Tertiary institution</p> <p>06 <input type="checkbox"/> Technical and Further Education (TAFE) College</p> <p>07 <input type="checkbox"/> College of Advanced Education (CAE)</p> <p>08 <input type="checkbox"/> University</p> <p>09 <input type="checkbox"/> Other institution</p> <p>↓</p> <p>Please state type</p>	<p>5 <input type="checkbox"/> No</p> <p>6 <input type="checkbox"/> Yes, full-time student</p> <p>7 <input type="checkbox"/> Yes, part-time student</p> <p>↓</p> <p>Please tick box corresponding to type of educational institution being attended</p> <p>01 <input type="checkbox"/> Pre-school</p> <p>Infants/Primary school</p> <p>02 <input type="checkbox"/> Government</p> <p>03 <input type="checkbox"/> Non-Government</p> <p>Secondary school</p> <p>04 <input type="checkbox"/> Government</p> <p>05 <input type="checkbox"/> Non-Government</p> <p>Tertiary institution</p> <p>06 <input type="checkbox"/> Technical and Further Education (TAFE) College</p> <p>07 <input type="checkbox"/> College of Advanced Education (CAE)</p> <p>08 <input type="checkbox"/> University</p> <p>09 <input type="checkbox"/> Other institution</p> <p>↓</p> <p>Please state type</p>
<p>Year</p> <p>19</p>	<p>Year</p> <p>19</p>	<p>Year</p> <p>19</p>	<p>Year</p> <p>19</p>	<p>Year</p> <p>19</p>
<p>1 <input type="checkbox"/> No, married once only</p> <p>2 <input type="checkbox"/> Yes</p>	<p>1 <input type="checkbox"/> No, married once only</p> <p>2 <input type="checkbox"/> Yes</p>	<p>1 <input type="checkbox"/> No, married once only</p> <p>2 <input type="checkbox"/> Yes</p>	<p>1 <input type="checkbox"/> No, married once only</p> <p>2 <input type="checkbox"/> Yes</p>	<p>1 <input type="checkbox"/> No, married once only</p> <p>2 <input type="checkbox"/> Yes</p>

<p>22. How old was each person when he/she left school?</p> <p>* For persons who are full-time primary or secondary school students, tick box 01.</p> <p>* For persons who did not go to school, tick box 02.</p>	<p>Age left school</p> <p>.....years</p> <p>01 <input type="checkbox"/> Still at primary or secondary school</p> <p>02 <input type="checkbox"/> Did not go to school</p>	<p>Age left school</p> <p>.....years</p> <p>01 <input type="checkbox"/> Still at primary or secondary school</p> <p>02 <input type="checkbox"/> Did not go to school</p>	<p>Age left school</p> <p>.....years</p> <p>01 <input type="checkbox"/> Still at primary or secondary school</p> <p>02 <input type="checkbox"/> Did not go to school</p>
<p>23. Has the person obtained a trade or any other qualification since leaving school?</p> <p>* For persons who are full-time primary or secondary school students, tick box 2.</p>	<p>1 <input type="checkbox"/> No</p> <p>2 <input type="checkbox"/> Still at primary or secondary school</p> <p>3 <input checked="" type="checkbox"/> Yes</p> <p>Please print details of highest qualification obtained.</p> <p>Qualification name.....</p> <p>Name of institution.....</p> <p>Field of study.....</p> <p>Year obtained.....</p> <p><input type="text"/><input type="text"/><input type="text"/><input type="text"/></p>	<p>1 <input type="checkbox"/> No</p> <p>2 <input type="checkbox"/> Still at primary or secondary school</p> <p>3 <input checked="" type="checkbox"/> Yes</p> <p>Please print details of highest qualification obtained.</p> <p>Qualification name.....</p> <p>Name of institution.....</p> <p>Field of study.....</p> <p>Year obtained.....</p> <p><input type="text"/><input type="text"/><input type="text"/><input type="text"/></p>	<p>1 <input type="checkbox"/> No</p> <p>2 <input type="checkbox"/> Still at primary or secondary school</p> <p>3 <input checked="" type="checkbox"/> Yes</p> <p>Please print details of highest qualification obtained.</p> <p>Qualification name.....</p> <p>Name of institution.....</p> <p>Field of study.....</p> <p>Year obtained.....</p> <p><input type="text"/><input type="text"/><input type="text"/><input type="text"/></p>
<p>24. What is the gross income (including pensions and/or allowances) that the person usually receives each week from all sources?</p> <p>* Count all income including: family allowance (child endowment); pensions; unemployment benefits etc; worker's compensation; superannuation; wages; salary; overtime; dividends; rents received; business or farm income (less expenses of operation); interest received.</p> <p>* Do not deduct tax, superannuation, health insurance etc.</p>	<p>01 <input type="checkbox"/> No income</p> <p>02 <input type="checkbox"/> \$1 to \$38 per week (\$1 to \$2,000 per year)</p> <p>03 <input type="checkbox"/> \$39 to \$76 per week (\$2,001 to \$4,000 per year)</p> <p>04 <input type="checkbox"/> \$77 to \$115 per week (\$4,001 to \$6,000 per year)</p> <p>05 <input type="checkbox"/> \$116 to \$172 per week (\$6,001 to \$9,000 per year)</p> <p>06 <input type="checkbox"/> \$173 to \$230 per week (\$9,001 to \$12,000 per year)</p> <p>07 <input type="checkbox"/> \$231 to \$287 per week (\$12,001 to \$15,000 per year)</p> <p>08 <input type="checkbox"/> \$288 to \$345 per week (\$15,001 to \$18,000 per year)</p> <p>09 <input type="checkbox"/> \$346 to \$421 per week (\$18,001 to \$22,000 per year)</p> <p>10 <input type="checkbox"/> \$422 to \$498 per week (\$22,001 to \$26,000 per year)</p> <p>11 <input type="checkbox"/> \$499 to \$613 per week (\$26,001 to \$32,000 per year)</p> <p>12 <input type="checkbox"/> \$614 to \$766 per week (\$32,001 to \$40,000 per year)</p> <p>13 <input type="checkbox"/> \$767 to \$958 per week (\$40,001 to \$50,000 per year)</p> <p>14 <input type="checkbox"/> Over \$958 per week (Over \$50,000 per year)</p>	<p>01 <input type="checkbox"/> No income</p> <p>02 <input type="checkbox"/> \$1 to \$38 per week (\$1 to \$2,000 per year)</p> <p>03 <input type="checkbox"/> \$39 to \$76 per week (\$2,001 to \$4,000 per year)</p> <p>04 <input type="checkbox"/> \$77 to \$115 per week (\$4,001 to \$6,000 per year)</p> <p>05 <input type="checkbox"/> \$116 to \$172 per week (\$6,001 to \$9,000 per year)</p> <p>06 <input type="checkbox"/> \$173 to \$230 per week (\$9,001 to \$12,000 per year)</p> <p>07 <input type="checkbox"/> \$231 to \$287 per week (\$12,001 to \$15,000 per year)</p> <p>08 <input type="checkbox"/> \$288 to \$345 per week (\$15,001 to \$18,000 per year)</p> <p>09 <input type="checkbox"/> \$346 to \$421 per week (\$18,001 to \$22,000 per year)</p> <p>10 <input type="checkbox"/> \$422 to \$498 per week (\$22,001 to \$26,000 per year)</p> <p>11 <input type="checkbox"/> \$499 to \$613 per week (\$26,001 to \$32,000 per year)</p> <p>12 <input type="checkbox"/> \$614 to \$766 per week (\$32,001 to \$40,000 per year)</p> <p>13 <input type="checkbox"/> \$767 to \$958 per week (\$40,001 to \$50,000 per year)</p> <p>14 <input type="checkbox"/> Over \$958 per week (Over \$50,000 per year)</p>	<p>01 <input type="checkbox"/> No income</p> <p>02 <input type="checkbox"/> \$1 to \$38 per week (\$1 to \$2,000 per year)</p> <p>03 <input type="checkbox"/> \$39 to \$76 per week (\$2,001 to \$4,000 per year)</p> <p>04 <input type="checkbox"/> \$77 to \$115 per week (\$4,001 to \$6,000 per year)</p> <p>05 <input type="checkbox"/> \$116 to \$172 per week (\$6,001 to \$9,000 per year)</p> <p>06 <input type="checkbox"/> \$173 to \$230 per week (\$9,001 to \$12,000 per year)</p> <p>07 <input type="checkbox"/> \$231 to \$287 per week (\$12,001 to \$15,000 per year)</p> <p>08 <input type="checkbox"/> \$288 to \$345 per week (\$15,001 to \$18,000 per year)</p> <p>09 <input type="checkbox"/> \$346 to \$421 per week (\$18,001 to \$22,000 per year)</p> <p>10 <input type="checkbox"/> \$422 to \$498 per week (\$22,001 to \$26,000 per year)</p> <p>11 <input type="checkbox"/> \$499 to \$613 per week (\$26,001 to \$32,000 per year)</p> <p>12 <input type="checkbox"/> \$614 to \$766 per week (\$32,001 to \$40,000 per year)</p> <p>13 <input type="checkbox"/> \$767 to \$958 per week (\$40,001 to \$50,000 per year)</p> <p>14 <input type="checkbox"/> Over \$958 per week (Over \$50,000 per year)</p>
<p>25. For each female, how many babies has she ever had?</p> <p>* Do not include still-births.</p> <p>* If none, tick box 21.</p>	<p>21 <input type="checkbox"/> None</p> <p>..... Total</p> <p>..... Now living</p>	<p>21 <input type="checkbox"/> None</p> <p>..... Total</p> <p>..... Now living</p>	<p>21 <input type="checkbox"/> None</p> <p>..... Total</p> <p>..... Now living</p>

	USE BLOCK LETTERS	USE BLOCK LETTERS	USE BLOCK LETTERS
<p>31. For the main job held LAST WEEK, what was the employer's trading name and address of workplace?</p> <ul style="list-style-type: none"> For persons conducting their own business, print name of own business. For teachers, print name of school. For government employees, print full name of Department, Division, Branch or Section. For persons with no fixed place of work last week (for example, airline pilots, taxi drivers etc.) write "N/A" in "Address of workplace". 	<p>Business or trading name</p> <p>.....</p> <p>.....</p> <p>Name of Division, Branch or Section (if any) in which the person worked</p> <p>.....</p> <p>.....</p> <p>Address of workplace:</p> <p>No. and street.....</p> <p>.....</p> <p>Suburb, town or locality.....</p> <p>.....</p> <p>State..... Postcode.....</p> <p><input type="text"/><input type="text"/><input type="text"/></p>	<p>Business or trading name</p> <p>.....</p> <p>.....</p> <p>Name of Division, Branch or Section (if any) in which the person worked</p> <p>.....</p> <p>.....</p> <p>Address of workplace:</p> <p>No. and street.....</p> <p>.....</p> <p>Suburb, town or locality.....</p> <p>.....</p> <p>State..... Postcode.....</p> <p><input type="text"/><input type="text"/><input type="text"/></p>	<p>Business or trading name</p> <p>.....</p> <p>.....</p> <p>Name of Division, Branch or Section (if any) in which the person worked</p> <p>.....</p> <p>.....</p> <p>Address of workplace:</p> <p>No. and street.....</p> <p>.....</p> <p>Suburb, town or locality.....</p> <p>.....</p> <p>State..... Postcode.....</p> <p><input type="text"/><input type="text"/><input type="text"/></p>
<p>32. What kind of industry, business or service is carried out by the employer at the address given in reply to question 31?</p> <ul style="list-style-type: none"> Describe as fully as possible, using two words or more (for example, dairy farming, footwear manufacturing). 	<p>Kind of industry.....</p> <p>.....</p> <p><input type="text"/><input type="text"/><input type="text"/><input type="text"/><input type="text"/></p>	<p>Kind of industry.....</p> <p>.....</p> <p><input type="text"/><input type="text"/><input type="text"/><input type="text"/><input type="text"/></p>	<p>Kind of industry.....</p> <p>.....</p> <p><input type="text"/><input type="text"/><input type="text"/><input type="text"/><input type="text"/></p>
<p>33. In the main job held LAST WEEK, how many hours did the person work?</p> <ul style="list-style-type: none"> Tick boxes for each person to show all methods used. 	<p><input type="checkbox"/> 1 None</p> <p><input type="checkbox"/> 2 1-15 hours</p> <p><input type="checkbox"/> 3 16-24 hours</p> <p><input type="checkbox"/> 4 25-34 hours</p> <p><input type="checkbox"/> 5 35-39 hours</p> <p><input type="checkbox"/> 6 40 hours</p> <p><input type="checkbox"/> 7 41-48 hours</p> <p><input type="checkbox"/> 8 49 hours or more</p>	<p><input type="checkbox"/> 1 None</p> <p><input type="checkbox"/> 2 1-15 hours</p> <p><input type="checkbox"/> 3 16-24 hours</p> <p><input type="checkbox"/> 4 25-34 hours</p> <p><input type="checkbox"/> 5 35-39 hours</p> <p><input type="checkbox"/> 6 40 hours</p> <p><input type="checkbox"/> 7 41-48 hours</p> <p><input type="checkbox"/> 8 49 hours or more</p>	<p><input type="checkbox"/> 1 None</p> <p><input type="checkbox"/> 2 1-15 hours</p> <p><input type="checkbox"/> 3 16-24 hours</p> <p><input type="checkbox"/> 4 25-34 hours</p> <p><input type="checkbox"/> 5 35-39 hours</p> <p><input type="checkbox"/> 6 40 hours</p> <p><input type="checkbox"/> 7 41-48 hours</p> <p><input type="checkbox"/> 8 49 hours or more</p>
<p>34. How did the person get to work on Monday, 30 June 1987?</p>	<p><input type="checkbox"/> 01 Train</p> <p><input type="checkbox"/> 02 Bus</p> <p><input type="checkbox"/> 03 Ferry or Tram</p> <p><input type="checkbox"/> 04 Taxi</p> <p><input type="checkbox"/> 05 Car—as driver</p> <p><input type="checkbox"/> 06 Car—as passenger</p> <p><input type="checkbox"/> 07 Motor bike or motor scooter</p> <p><input type="checkbox"/> 08 Bicycle</p> <p><input type="checkbox"/> 09 Walked only</p> <p><input type="checkbox"/> 10 Worked at home</p> <p><input type="checkbox"/> 11 Did not go to work</p> <p><input type="checkbox"/> 12 Other</p> <p>↓</p> <p>Please state.....</p>	<p><input type="checkbox"/> 01 Train</p> <p><input type="checkbox"/> 02 Bus</p> <p><input type="checkbox"/> 03 Ferry or Tram</p> <p><input type="checkbox"/> 04 Taxi</p> <p><input type="checkbox"/> 05 Car—as driver</p> <p><input type="checkbox"/> 06 Car—as passenger</p> <p><input type="checkbox"/> 07 Motor bike or motor scooter</p> <p><input type="checkbox"/> 08 Bicycle</p> <p><input type="checkbox"/> 09 Walked only</p> <p><input type="checkbox"/> 10 Worked at home</p> <p><input type="checkbox"/> 11 Did not go to work</p> <p><input type="checkbox"/> 12 Other</p> <p>↓</p> <p>Please state.....</p>	<p><input type="checkbox"/> 01 Train</p> <p><input type="checkbox"/> 02 Bus</p> <p><input type="checkbox"/> 03 Ferry or Tram</p> <p><input type="checkbox"/> 04 Taxi</p> <p><input type="checkbox"/> 05 Car—as driver</p> <p><input type="checkbox"/> 06 Car—as passenger</p> <p><input type="checkbox"/> 07 Motor bike or motor scooter</p> <p><input type="checkbox"/> 08 Bicycle</p> <p><input type="checkbox"/> 09 Walked only</p> <p><input type="checkbox"/> 10 Worked at home</p> <p><input type="checkbox"/> 11 Did not go to work</p> <p><input type="checkbox"/> 12 Other</p> <p>↓</p> <p>Please state.....</p>

USE BLOCK LETTERS	USE BLOCK LETTERS	USE BLOCK LETTERS	USE BLOCK LETTERS	USE BLOCK LETTERS
Business or trading name	Business or trading name	Business or trading name	Business or trading name	Business or trading name
.....
.....
Name of Division, Branch or Section (if any) in which the person worked	Name of Division, Branch or Section (if any) in which the person worked	Name of Division, Branch or Section (if any) in which the person worked	Name of Division, Branch or Section (if any) in which the person worked	Name of Division, Branch or Section (if any) in which the person worked
.....
.....
Address of workplace:	Address of workplace:	Address of workplace:	Address of workplace:	Address of workplace:
No. and street	No. and street	No. and street	No. and street	No. and street
.....
.....
Suburb, town or locality	Suburb, town or locality	Suburb, town or locality	Suburb, town or locality	Suburb, town or locality
.....
.....
State..... Postcode.....	State..... Postcode.....	State..... Postcode.....	State..... Postcode.....	State..... Postcode.....
<input type="text"/> <input type="text"/> <input type="text"/>	<input type="text"/> <input type="text"/> <input type="text"/>	<input type="text"/> <input type="text"/> <input type="text"/>	<input type="text"/> <input type="text"/> <input type="text"/>	<input type="text"/> <input type="text"/> <input type="text"/>
Kind of industry	Kind of industry	Kind of industry	Kind of industry	Kind of industry
.....
.....
<input type="checkbox"/> None <input type="checkbox"/> 1-15 hours <input type="checkbox"/> 16-24 hours <input type="checkbox"/> 25-34 hours <input type="checkbox"/> 35-39 hours <input type="checkbox"/> 40 hours <input type="checkbox"/> 41-48 hours <input type="checkbox"/> 49 hours or more	<input type="checkbox"/> None <input type="checkbox"/> 1-15 hours <input type="checkbox"/> 16-24 hours <input type="checkbox"/> 25-34 hours <input type="checkbox"/> 35-39 hours <input type="checkbox"/> 40 hours <input type="checkbox"/> 41-48 hours <input type="checkbox"/> 49 hours or more	<input type="checkbox"/> None <input type="checkbox"/> 1-15 hours <input type="checkbox"/> 16-24 hours <input type="checkbox"/> 25-34 hours <input type="checkbox"/> 35-39 hours <input type="checkbox"/> 40 hours <input type="checkbox"/> 41-48 hours <input type="checkbox"/> 49 hours or more	<input type="checkbox"/> None <input type="checkbox"/> 1-15 hours <input type="checkbox"/> 16-24 hours <input type="checkbox"/> 25-34 hours <input type="checkbox"/> 35-39 hours <input type="checkbox"/> 40 hours <input type="checkbox"/> 41-48 hours <input type="checkbox"/> 49 hours or more	<input type="checkbox"/> None <input type="checkbox"/> 1-15 hours <input type="checkbox"/> 16-24 hours <input type="checkbox"/> 25-34 hours <input type="checkbox"/> 35-39 hours <input type="checkbox"/> 40 hours <input type="checkbox"/> 41-48 hours <input type="checkbox"/> 49 hours or more
<input type="checkbox"/> 01 Train <input type="checkbox"/> 02 Bus <input type="checkbox"/> 03 Ferry or Tram <input type="checkbox"/> 04 Taxi <input type="checkbox"/> 05 Car—as driver <input type="checkbox"/> 06 Car—as passenger <input type="checkbox"/> 07 Motor bike or motor scooter <input type="checkbox"/> 08 Bicycle <input type="checkbox"/> 09 Walked only <input type="checkbox"/> 10 Worked at home <input type="checkbox"/> 11 Did not go to work <input type="checkbox"/> 12 Other ↓ Please state.....	<input type="checkbox"/> 01 Train <input type="checkbox"/> 02 Bus <input type="checkbox"/> 03 Ferry or Tram <input type="checkbox"/> 04 Taxi <input type="checkbox"/> 05 Car—as driver <input type="checkbox"/> 06 Car—as passenger <input type="checkbox"/> 07 Motor bike or motor scooter <input type="checkbox"/> 08 Bicycle <input type="checkbox"/> 09 Walked only <input type="checkbox"/> 10 Worked at home <input type="checkbox"/> 11 Did not go to work <input type="checkbox"/> 12 Other ↓ Please state.....	<input type="checkbox"/> 01 Train <input type="checkbox"/> 02 Bus <input type="checkbox"/> 03 Ferry or Tram <input type="checkbox"/> 04 Taxi <input type="checkbox"/> 05 Car—as driver <input type="checkbox"/> 06 Car—as passenger <input type="checkbox"/> 07 Motor bike or motor scooter <input type="checkbox"/> 08 Bicycle <input type="checkbox"/> 09 Walked only <input type="checkbox"/> 10 Worked at home <input type="checkbox"/> 11 Did not go to work <input type="checkbox"/> 12 Other ↓ Please state.....	<input type="checkbox"/> 01 Train <input type="checkbox"/> 02 Bus <input type="checkbox"/> 03 Ferry or Tram <input type="checkbox"/> 04 Taxi <input type="checkbox"/> 05 Car—as driver <input type="checkbox"/> 06 Car—as passenger <input type="checkbox"/> 07 Motor bike or motor scooter <input type="checkbox"/> 08 Bicycle <input type="checkbox"/> 09 Walked only <input type="checkbox"/> 10 Worked at home <input type="checkbox"/> 11 Did not go to work <input type="checkbox"/> 12 Other ↓ Please state.....	<input type="checkbox"/> 01 Train <input type="checkbox"/> 02 Bus <input type="checkbox"/> 03 Ferry or Tram <input type="checkbox"/> 04 Taxi <input type="checkbox"/> 05 Car—as driver <input type="checkbox"/> 06 Car—as passenger <input type="checkbox"/> 07 Motor bike or motor scooter <input type="checkbox"/> 08 Bicycle <input type="checkbox"/> 09 Walked only <input type="checkbox"/> 10 Worked at home <input type="checkbox"/> 11 Did not go to work <input type="checkbox"/> 12 Other ↓ Please state.....

PLEASE ANSWER QUESTIONS ABOUT THIS DWELLING

H1. How many rooms are there in this dwelling?

- Write the number of each type of room.

for example, Bedroom(s).

- Count each room once only.
- A room shared with another household should be counted only by the principal householder.
- Do not count toilets, pantries, laundries, storerooms, halls or corridors.

Number Type of Room

..... Bedroom(s)

..... Combined lounge/dining room

..... Lounge room

..... Dining room

..... Kitchen

..... Bathroom

..... Family room

..... Study

..... Other rooms (please state)



H2. How many registered motor vehicles owned or used by members of this household were garaged or parked at or near this dwelling for the night of Monday, 30 June 1987

- Exclude motor bikes, motor scooters, tractors.
- Include company vehicles kept at home.

0 None

1 1 motor vehicle

2 2 motor vehicles

3 3 motor vehicles

4 4 motor vehicles or more

Go to Question H3 →

H3. Is this dwelling rented by you or any usual member of this household?

1 No

2 Yes

To whom is rent paid?

3 State Housing Authority

4 Other Government Agency

5 Other

What is the weekly rent?

\$ per week.

Is this dwelling rented furnished or unfurnished?

1 Furnished

2 Unfurnished

Is this dwelling owned (or being bought) by you or any usual member of this household?

6 Yes, owned (paid-off)

7 Yes, being bought

8 No

If being bought:

What monthly payment (or average monthly payment) is being made on the loan(s) for this dwelling?

\$ per month.

Go to Question H4 →

For a household with more than 8 persons,
please contact the Census Collector.

PERSON 4	PERSON 5	PERSON 6	PERSON 7	PERSON 8
Christian or given name	Christian or given name	Christian or given name	Christian or given name	Christian or given name
Surname	Surname	Surname	Surname	Surname
7 <input type="checkbox"/> Male 8 <input type="checkbox"/> Female	7 <input type="checkbox"/> Male 8 <input type="checkbox"/> Female	7 <input type="checkbox"/> Male 8 <input type="checkbox"/> Female	7 <input type="checkbox"/> Male 8 <input type="checkbox"/> Female	7 <input type="checkbox"/> Male 8 <input type="checkbox"/> Female
..... years..... months years..... months years..... months years..... months years..... months

H4. Are there any persons who usually live in this household who were not present on the night of Monday, 30 June 1986?

5 No

6 Yes → Please complete details below for each person absent

	<input type="checkbox"/>	<input type="checkbox"/>	<input type="checkbox"/>
Name of each person who usually lives in this household but was not present on the night of Monday, 30 June 1986:	Christian or given name	Christian or given name	Christian or given name
	Surname	Surname	Surname
Sex: • Tick one box for each person absent.	<input type="checkbox"/> Male <input type="checkbox"/> Female	<input type="checkbox"/> Male <input type="checkbox"/> Female	<input type="checkbox"/> Male <input type="checkbox"/> Female
Age: • In years and completed months. • If age is less than one year write "0" years and the number of completed months. years..... months years..... months years..... months
What is each person's relationship to Person 1 (as listed on page 1)? • For example, husband, daughter, mother, son-in-law, sister, grandson.	Relationship to Person 1	Relationship to Person 1	Relationship to Person 1
What is each person's present marital status?	<input type="checkbox"/> Never married <input type="checkbox"/> Married <input type="checkbox"/> Separated but not divorced <input type="checkbox"/> Divorced <input type="checkbox"/> Widowed	<input type="checkbox"/> Never married <input type="checkbox"/> Married <input type="checkbox"/> Separated but not divorced <input type="checkbox"/> Divorced <input type="checkbox"/> Widowed	<input type="checkbox"/> Never married <input type="checkbox"/> Married <input type="checkbox"/> Separated but not divorced <input type="checkbox"/> Divorced <input type="checkbox"/> Widowed
Is the person a full-time student?	<input type="checkbox"/> Yes, full-time student <input type="checkbox"/> No	<input type="checkbox"/> Yes, full-time student <input type="checkbox"/> No	<input type="checkbox"/> Yes, full-time student <input type="checkbox"/> No

**PLEASE CHECK YOU HAVE NOT MISSED
ANY PAGES OR QUESTIONS**

**THANK YOU FOR YOUR CO-OPERATION
AUSTRALIAN STATISTICIAN**



COLLECTOR'S USE ONLY

C1. What type of structure best describes this dwelling?

- 01 Separate house
02 Semi-detached house
03 Row or terrace house
04 Medium density housing
05 Flat, unit in building over three storeys
06 Caravan, tent, cabin etc in caravan park
07 Caravan not in caravan park, houseboat etc
08 Improvised home
09 House or flat attached to a shop, office etc

C2. If dwelling unit is unoccupied, why is it unoccupied?

- 10 For sale
11 To let (other than holiday home)
12 Newly completed and awaiting occupancy
13 Vacant for repairs or alterations
14 Holiday home
15 Condemned or awaiting demolition
16 Usual resident temporarily absent
17 Other

Please state

APPENDIX D

INQUIRIES

NEW SOUTH WALES

Information Services
St Andrew's House
Sydney, N.S.W. 2000
(Box 796, G.P.O. Sydney 2001)
Phone (02) 268 4611
Telex AA20819
Keylink 6009 : ABS187

VICTORIA

Information Services
Rialto North Tower
525 Collins Street
Melbourne, VIC. 3000
(Box 2796Y, G.P.O. Melbourne 3001)
Phone (03) 615 7840
Telex AA30086
Keylink 6009 : ABS257

QUEENSLAND

Information Services
313 Adelaide Street
Brisbane, QLD 4000
(Box 9817, G.P.O. Brisbane 4001)
Phone (07) 222 6351
Telex AA40271
Keylink 6009 : ABS359

WESTERN AUSTRALIA

Information Services
Merlin Centre
30 Terrace Road
Perth, W.A. 6000
(Box K881, G.P.O. Perth 6001)
Phone (09) 323 5140
Telex AA92041
Keylink 6009 : ABS588

SOUTH AUSTRALIA

Information Services
Citibank Building
41 Currie Street
Adelaide, S.A. 5000
(Box 2272, G.P.O. Adelaide 5001)
Phone (08) 237 7100
Telex AA82106
Keylink 6009 : ABS454

TASMANIA

Information Services
175 Collins Street
Hobart, TAS. 7000
(Box 66A, G.P.O. Hobart 7001)
Phone (002) 20 9409
Telex AA58098
Keylink 6009 : ABS657

NORTHERN TERRITORY

The Statistician-Northern Territory
6th Floor, MLC Building
81 Smith Street
Darwin, N.T. 5790
(Box 3796, P.O. Darwin 5794)
Phone (089) 81 5222
Telex AA85075
Keylink 6009 : ABS708

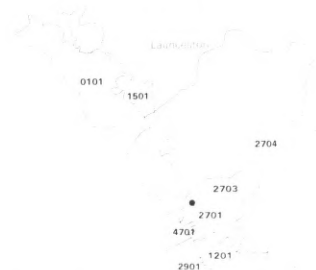
AUSTRALIAN CAPITAL TERRITORY

Information Services
Australian Bureau of Statistics
Unit 5, Cameron Offices
Belconnen, A.C.T. 2617
(Box 10, P.O.
Belconnen, A.C.T. 2616)
Phone (062) 52 6627
Telex AA62020
Keylink 6009 : ABS875

ENLARGEMENT A



ENLARGEMENT B



SCALE 1:1 000 000
 Kilometres 10 0 10 20 30 40 Kilometres

STATISTICAL LOCAL AREAS

LGA	SLA	NAME	LGA	SLA	NAME
0100		Beaconsfield (M)	2600		Latrobe (M)
	0101	Beaconsfield (M) - Pt A	2601		Latrobe (M) - Pt A
	0102	Beaconsfield (M) - Pt B	2602		Latrobe (M) - Pt B
0200	0200	Bothwell (M)	2700		Launceston (C)
0300		Brighton (M)	2701		Launceston (C) - Inner
	0302	Brighton (M) - Pt B	2702		Launceston (C) - Pt B
0400	0400	Bruny (M)	2704		Launceston (C) - Pt C
0500		Burnie (M)	2900		Longford (M)
	0501	Burnie (M) - Pt A	2901		Longford (M) - Pt A
	0502	Burnie (M) - Pt B	2902		Longford (M) - Pt B
0600	0600	Campbell Town (M)	3000		New Norfolk (M)
0700	0700	Circular Head (M)	3002		New Norfolk (M) - Pt B
0900	0900	Deloraine (M)	3100		Oatlands (M)
1000	1000	Devonport (C)	3200		Penguin (M)
1100	1100	Esperance (M)		3201	Penguin (M) - Pt A
1200		Evandale (M)		3202	Penguin (M) - Pt B
	1201	Evandale (M) - Pt A	3300		Port Cygnet (M)
	1202	Evandale (M) - Pt B	3400		Portland (M)
1300	1300	Fingal (M)	3500		Queenstown (M)
1400	1400	Flinders (M)	3600		Richmond (M)
1500		George Town (M)	3700		Ringarooma (M)
	1501	George Town (M) - Pt A	3800		Ross (M)
	1502	George Town (M) - Pt B	4000		Scottsdale (M)
1600	1600	Glamorgan (M)	4100		Sorell (M)
1800	1800	Greenanston (M)		4102	Sorell (M) - Pt B
1900	1900	Green Ponds (M)	4200		Spring Bay (M)
2000	2000	Hamilton (M)	4300		Strahan (M)
2200	2200	Huon (M)	4400		Tasman (M)
2300	2300	Kentish (M)	4500		Ulverstone (M)
2400	2400	King Island (M)	4501		Ulverstone (M) - Pt A
2500		Kingborough (M)	4502		Ulverstone (M) - Pt B
	2502	Kingborough (M) - Pt B	4600		Waratah (M)
			4700		Westbury (M)
				4701	Westbury (M) - Pt A
				4702	Westbury (M) - Pt B
			4800		Wynyard (M)
				4801	Wynyard (M) - Pt A
				4802	Wynyard (M) - Pt B
			4900		Zeehan (M)
			9779		Off - Shore areas & Migratory

15 NORTHERN
 Statistical Division NORTH EASTERN
 Statistical Subdivision
 Statistical District
 Statistical Local Area 2704



Prepared for the Australian Bureau of Statistics
 by the Division of National Mapping, 1987
 © Commonwealth of Australia

TASMANIA

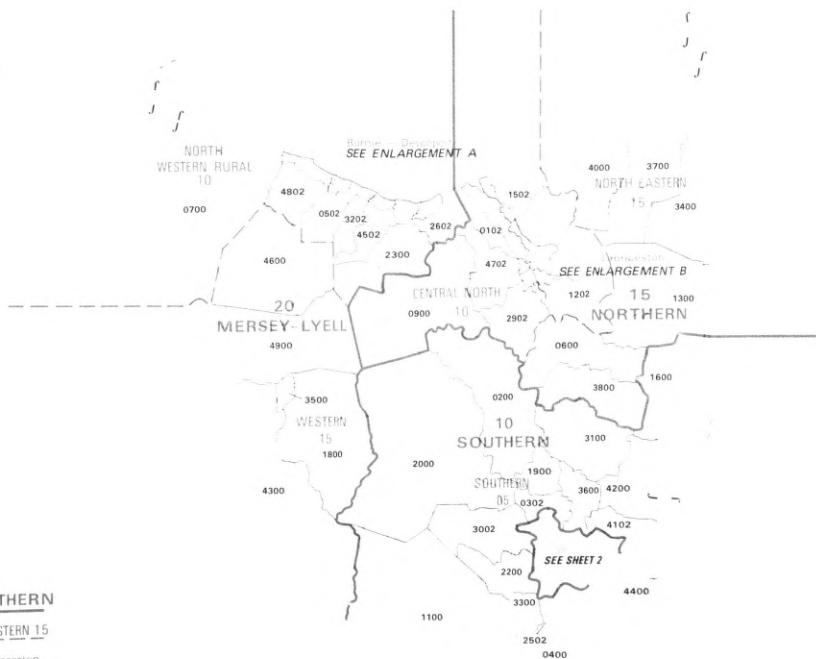
1986 CENSUS

SCALE 1:2 500 000

Kilometres 50 0 50 100 150 200 Kilometres

2400

1400



15 NORTHERN

NORTH EASTERN 15

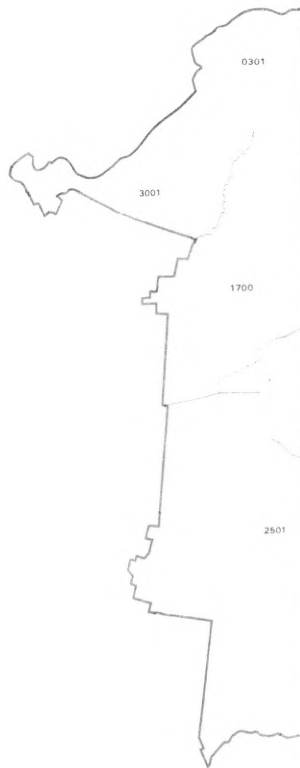
Launceston

2704



STATISTICAL LOCAL AREAS

LGA	SLA	NAME
0300		Brighton (M)
	0301	Brighton (M) - Pt A
0800	0800	Clarence (M)
1700	1700	Glenerchy (C)
2100		Hobart (C)
	2101	Hobart (C) - Inner
	2102	Hobart (C) - Remainder
2500		Kingborough (M)
	2501	Kingborough (M) - Pt A
3000		New Norfolk (M)
	3001	New Norfolk (M) - Pt A
4100		Sorell (M)
	4101	Sorell (M) - Pt A



Statistical Division **05 GREATER HOBART**

Statistical Local Area **0800**



Prepared for the Australian Bureau of Statistics
by the Division of National Mapping, 1987
© Commonwealth of Australia

GREATER HOBART STATISTICAL DIVISION

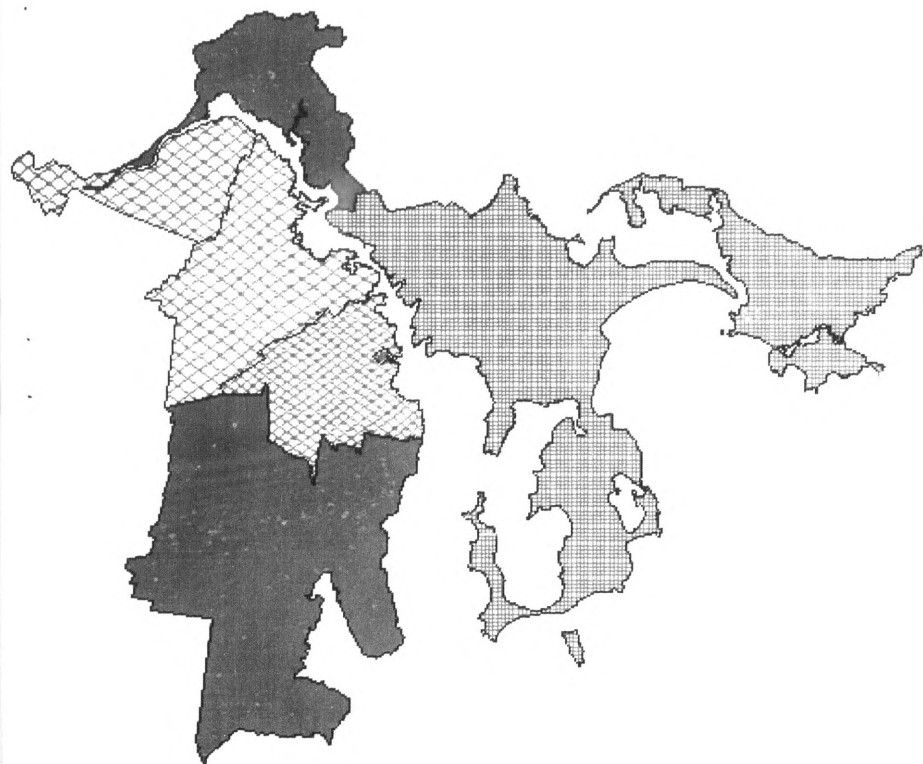
1986 CENSUS

SCALE 1 300 000

Kilometres 5 0 5 10 15 20 Kilometres



INTERCENSAL CHANGE IN STATISTICAL LOCAL AREAS WITHIN THE
HOBART STATISTICAL DIVISION (1981-1986): PERSONS



INTERCENSAL CHANGE, PERSONS

