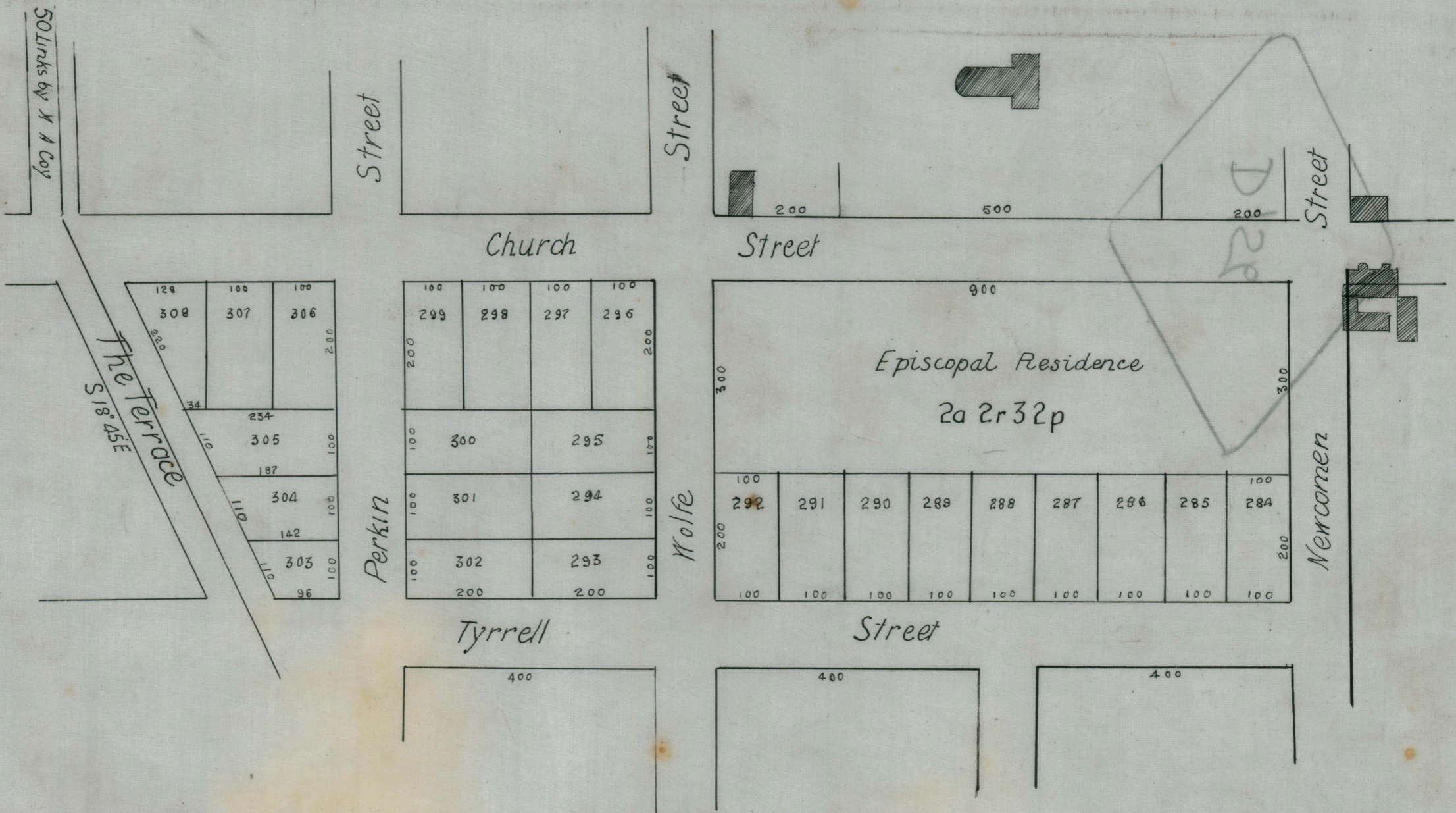


Copy to Mr. Spence  
28th July 1906. map



1 to 19 and 284 to 302 Sold at Newcastle  
20th October 1854  
303, 304 and 308 Sold 12th Sept 1860

TRACING

from PLAN of ALLOTMENTS 284 to 308 incl. (Cat. N. 92. 844)

CITY OF NEWCASTLE

Scale 2 Chains to an Inch

Sg<sup>d</sup> John Rogers L.S.  
June 14<sup>th</sup> 1854

11-525-118  
1854