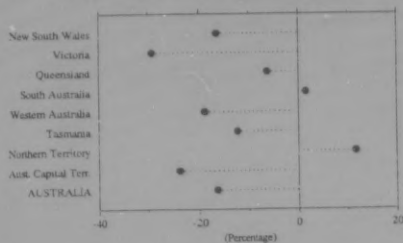




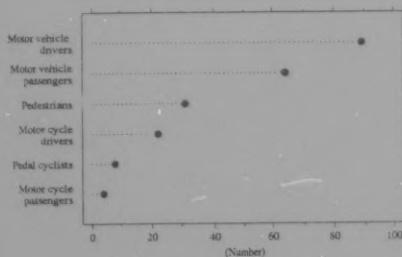
PERSONS KILLED IN ROAD ACCIDENTS: PERCENTAGE DIFFERENCE BETWEEN THE TWELVE MONTHS ENDED 1989 AND 1990



A comparison of the number of fatalities for the year 1990 with 1989, shows significant decreases in most States and Territories. Small increases were recorded in South Australia (up from 219 to 222) and the Northern Territory (up from 61 to 68).

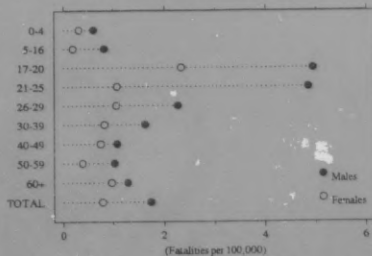
Victoria shows the largest relative and absolute drop in fatalities. About 50% of the total reduction in fatalities was accounted for by that State.

PERSONS KILLED IN ROAD ACCIDENTS: TYPE OF ROAD USER INVOLVED, DECEMBER 1990



Of the 218 persons killed in road accidents in December 1990, drivers of motor vehicles accounted for 89 (40.8%), passengers in motor vehicles 64 (29.4%), pedestrians 31 (14.2%), drivers of motor cycles 22 (10.1%), pedal cyclists 8 (3.7%) and passengers on motor cycles 4 (1.8%).

PERSONS KILLED IN ROAD ACCIDENTS BY AGE AND SEX, PER 100,000 OF POPULATION WITHIN EACH GROUP, DECEMBER 1990 (Preliminary estimated resident population at 31 Dec. 1989)



Fatality rates in December 1990 were highest amongst males in the 17-20 age range. Overall, the rate for males was more than double that for females.

TABLE 1. PERSONS KILLED IN ROAD TRAFFIC ACCIDENTS

Period	NSW	Vic.	Qld	SA	WA	Tas.	NT	ACT	Australia
<i>Year—</i>									
1985	1,067	683	502	268	243	78	67	33	2,941
1986	1,029	668	481	288	228	91	71	32	2,888
1987	959	705	442	256	213	77	84	36	2,772
1988	1,037	701	539	222	229	75	51	32	2,886
1989	960	771	428	219	242	80	61	34	2,795
1990p	800	546	402	222	196	70	68	26	2,330
<i>1989 —</i>									
October	96	50	41	26	21	1	4	4	243
November	69	39	51	13	17	5	6	2	202
December	124	65	47	25	30	4	8	3	306
<i>1990 p—</i>									
January	52	48	23	16	16	8	9	2	174
February	52	44	28	16	14	9	2	—	165
March	88	55	32	20	13	7	7	1	223
April	57	39	29	15	24	6	5	—	175
May	59	56	30	18	11	1	7	3	185
June	70	64	38	14	25	6	2	1	220
July	84	41	31	20	14	1	8	6	205
August	66	34	39	23	10	4	10	3	189
September	80	48	r50	28	16	8	3	1	r234
October	62	35	33	16	11	6	1	3	167
November	r57	r40	r30	17	16	r7	5	3	r175
December	73	42	39	19	26	7	9	3	218
<i>Twelve months ended—</i>									
December 1989	960	771	428	219	242	80	61	34	2,795
December 1990p	800	546	402	222	196	70	68	26	2,330

TABLE 2. FATAL ROAD TRAFFIC ACCIDENTS

Period	NSW	Vic.	Qld	SA	WA	Tas.	NT	ACT	Australia
<i>Year—</i>									
1985	954	605	452	239	219	69	59	30	2,627
1986	908	610	421	259	208	78	63	30	2,577
1987	838	626	400	230	193	67	80	33	2,487
1988	912	615	483	204	190	68	46	32	2,559
1989	783	678	376	199	213	68	57	28	2,402
1990p	704	491	350	183	182	61	53	24	2,048
<i>1989 —</i>									
October	67	44	36	23	17	1	4	3	195
November	63	34	44	13	16	5	6	2	183
December	75	58	42	23	26	4	7	3	238
<i>1990 p—</i>									
January	43	44	19	13	16	7	9	2	153
February	50	37	24	13	14	6	—	—	146
March	77	52	28	15	13	7	6	1	199
April	52	36	26	15	21	6	3	—	159
May	54	51	24	16	16	4	2	1	188
June	59	51	35	13	13	1	4	3	163
July	75	37	30	15	14	1	8	1	185
August	59	33	35	18	8	2	6	3	164
September	69	42	r37	21	15	7	3	1	r195
October	33	30	30	16	9	6	1	3	148
November	r50	r37	r27	12	15	r7	5	3	r156
December	63	41	35	16	24	7	4	2	192
<i>Twelve months ended—</i>									
December 1989	783	678	376	199	213	68	57	28	2,402
December 1990p	704	491	350	183	182	61	53	24	2,048

TABLE 3. PERSONS KILLED : AGE GROUP AND SEX, DECEMBER 1990 p

Age group	NSW	Vic.	Qld	SA	WA	Tas.	NT	ACT	Australia
MALES									
0-4	3	—	1	2	2	—	1	—	4
5-16	2	2	3	1	4	3	—	—	12
17-20	9	10	2	1	7	2	—	—	28
21-25	7	7	3	1	7	—	—	—	32
26-29	—	—	—	—	—	—	—	—	13
30-39	6	5	5	2	1	1	2	1	23
40-49	4	3	2	4	2	—	1	—	12
50-59	2	3	1	1	—	—	1	1	8
60 and over	5	3	4	1	—	—	—	—	15
Not Stated	2	—	—	—	—	—	—	—	2
Total	52	32	21	14	17	6	6	2	150
FEMALES									
0-4	1	—	—	—	—	—	1	—	2
5-16	1	—	—	1	2	—	—	—	3
17-20	4	1	5	—	—	—	—	—	13
21-25	3	1	3	—	—	—	—	—	7
26-29	3	1	—	1	2	1	—	—	6
30-39	3	1	3	2	1	—	1	—	11
40-49	2	2	2	—	—	—	—	—	8
50-59	2	—	1	—	1	—	—	1	3
60 and over	3	4	4	1	—	—	—	1	14
Not stated	1	—	—	—	—	—	—	—	1
Total	21	10	18	5	9	1	3	1	68
PERSONS									
0-4	4	—	1	2	4	—	1	—	6
5-16	3	2	3	2	6	3	—	—	15
17-20	13	11	7	2	7	2	—	—	42
21-25	15	8	6	1	3	1	—	1	39
26-29	8	1	—	5	3	1	3	—	19
30-39	9	5	4	4	1	—	2	—	34
40-49	6	4	2	2	1	—	1	—	20
50-59	4	2	4	1	—	—	1	2	11
60 and over	4	7	8	2	1	—	—	—	29
Not stated	3	—	—	—	—	—	—	—	3
Total	73	42	39	19	26	7	9	3	218

TABLE 4. PERSONS KILLED : TYPE OF ROAD USER INVOLVED, DECEMBER 1990 p

Type of road user involved	NSW	Vic.	Qld	SA	WA	Tas.	NT	ACT	Australia
Drivers of—	29	22	12	7	10	4	3	2	89
Motor vehicles	8	4	2	4	4	—	—	—	22
Motor cycles	—	—	—	—	—	—	—	—	—
Passengers in/on—	19	8	17	5	7	2	5	1	64
Motor vehicles	3	—	1	—	—	—	—	—	4
Motor cycles	2	1	1	2	2	1	1	—	8
Pedal cyclists	12	7	6	1	3	1	—	—	31
Pedestrians	—	—	—	—	—	—	—	—	—
All others	—	—	—	—	—	—	—	—	—
All road users	73	42	39	19	26	7	9	3	218

## EXPLANATORY NOTES

## Introduction

This publication contains preliminary details of the number of road fatalities and fatal road traffic accidents that occurred in each State and Territory during the reference month, together with comparable figures for some earlier periods. These details have been compiled on the basis of accident report forms completed by police officers. Figures for this month, and possibly for earlier months, would be subject to change as a result of any further deaths.

## Related publications

Users may also wish to refer to the following road traffic accident publication which is available on request:

*Road Traffic Accidents Involving Casualties (Admissions to Hospitals), Australia (9405.0) — issued quarterly up to and including December 1986 (and annually thereafter).*

Current publications produced by the ABS are listed in the *Catalogue of Publications and Products, Australia (1101.0)*. The ABS also issues, on Tuesdays and Fridays, a *Publications Advice (1105.0)* which lists publications to be released in the next few days. The Catalogue and Publications Advice are available from any ABS office.

## Symbols and other usages

- r figure or series revised since previous issue  
p preliminary figure or series subject to revision  
— nil

W. McLENNAN  
Acting Australian Statistician

