

PRICE INDEX OF MATERIALS USED IN BUILDING OTHER THAN HOUSE
BUILDING, EIGHT CAPITAL CITIES, JANUARY 1991

MAIN FEATURES

	Change between—	
	December 90 and January 91	January 90 and January 91
	%	%
Weighted average of six State capital cities	+0.5	+5.4
Sydney	+0.3	+6.0
Melbourne	+0.7	+5.1
Brisbane	+0.7	+4.0
Adelaide	+0.2	+5.6
Perth	+0.2	+5.5
Hobart	+0.1	+4.1
Darwin	-0.1	+4.8
Canberra	+0.1	+6.4

The increase in the All groups index (weighted average of the six State capital cities) between December 1990 and January 1991 of +0.5% continues the relatively low increases recorded in recent months.

The movement in January reflects increases in a wide range of items. These increases were partly offset by decreases in a small number of other items. As shown in Table 2, the main price movements were for:

- * ready mixed concrete (+0.27 index points);
- * air conditioning equipment (+0.24 index points);
- * reinforcing steel (+0.08 index points);
- * steel windows, doors, etc. (+0.07 index points);
- * sand, aggregate and filling (+0.07 index points).

See Table 2 for an analysis of the major contributors to each city's movement.

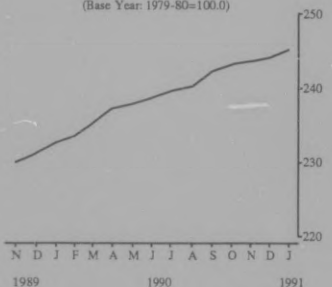
The annual rate of increase in the All groups index (weighted average of the six State capital cities) of 5.4% continues the overall fall in the annual increases recorded over recent periods.

ALL GROUPS INDEX

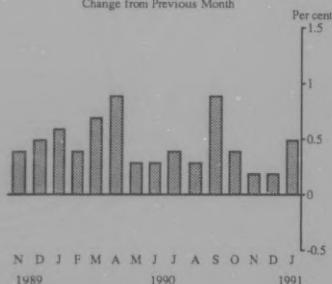
Weighted average of six State capital cities

Index Numbers

(Base Year: 1979-80=100.0)



Change from Previous Month



NOTE

Explanatory Notes are published at the back of this publication.

Revisions to electrical materials index numbers for Brisbane for the months September to December 1990 are shown in this issue. The revisions affect Tables 1, 3 and 6.

IAN CASTLES
Australian Statistician

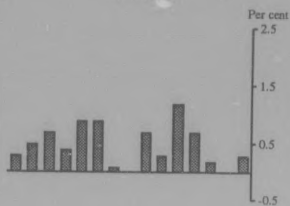
INQUIRIES

* for further information about statistics in this publication and the availability of related unpublished statistics contact Peter Sturgeon on Canberra (06) 252 6143 or any ABS State office.

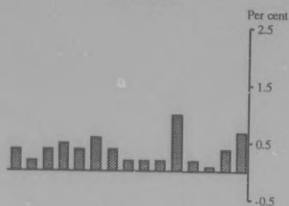
* for information about other ABS statistics and services please refer to the back page of this publication.

PRICE INDEX OF MATERIALS USED IN BUILDING OTHER THAN HOUSE BUILDING—ALL GROUPS
PERCENTAGE CHANGE FROM PREVIOUS MONTH

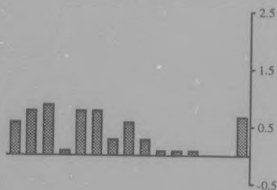
SYDNEY



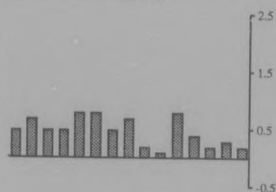
MELBOURNE



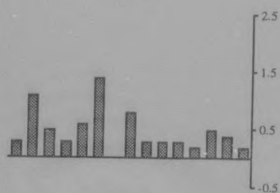
BRISBANE



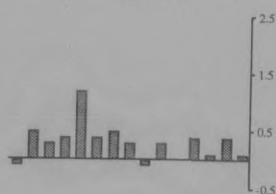
ADELAIDE



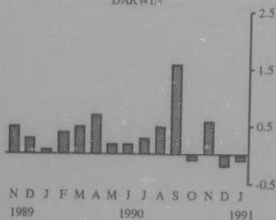
PERTH



HOBART



DARWIN



CANBERRA

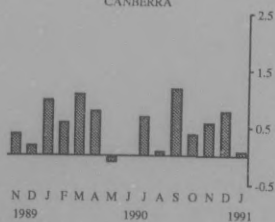


TABLE 1. PRICE INDEX OF MATERIALS USED IN BUILDING OTHER THAN HOUSE BUILDING—ALL GROUPS

	Weighted average of six State capital cities								
	Sydney	Melbourne	Brisbane	Adelaide	Perth	Hobart	Darwin	Canberra	
	INDEX NUMBERS								
	(Base Year 1979-80=100.0)								
							1981-82=100.0	1986-87=100.0	
1987-88	196.8	197.5	192.6	194.4	204.7	201.5	188.9	149.3	111.5
1988-89	214.9	214.7	211.6	213.7	220.7	221.8	204.7	161.7	122.3
1989-90	231.9	231.3	227.8	233.9	237.1	240.0	216.8	171.9	132.2
1989-90—									
November	230.0	229.3	226.8	231.9	234.7	237.1	214.7	171.2	130.9
December	231.2	230.4	227.2	233.8	236.3	239.7	215.7	171.7	131.1
January	232.6	232.1	228.0	236.0	237.5	240.9	216.3	171.9	132.4
February	233.5	233.1	229.2	236.2	238.7	241.6	217.1	172.6	133.2
March	235.2	235.1	230.2	238.2	240.6	243.1	219.7	174.7	134.6
April	237.2	237.3	231.6	240.0	242.5	246.6	220.6	174.7	135.7
May	237.8	237.6	232.5	240.6	243.6	246.7	221.6	175.1	135.6
June	238.6	237.6	233.0	242.1	245.4	248.7	222.3	175.5	135.6
1990-91—									
July	239.5	239.3	233.5	242.9	246.0	249.4	222.0	176.0	136.6
August	240.1	240.1	234.0	243.2	246.3	250.2	222.7	176.9	136.7
September	r242.2	243.1	236.4	r243.5	248.3	250.9	222.8	179.8	138.3
October p	r243.1	244.7	236.9	r243.8	249.3	251.5	223.8	179.6	138.8
November p	r243.5	245.1	237.1	r243.8	249.7	252.7	224.1	180.7	139.7
December p	r244.0	245.2	238.0	r243.8	250.4	253.6	224.9	180.3	140.8
January p	245.1	246.0	239.6	245.4	250.8	254.2	225.1	180.2	140.9
	PERCENTAGE CHANGES								
	Change from previous year								
1987-88	+8.8	+9.1	+8.3	+8.2	+8.9	+9.6	+6.2	+6.9	+11.5
1988-89	+9.2	+8.7	+9.9	+9.9	+7.8	+10.1	+8.4	+8.3	+9.7
1989-90	+7.9	+7.7	+7.7	+9.5	+7.5	+8.2	+5.9	+6.3	+8.1
	Change from corresponding month of previous year								
1989-90—									
November	+7.8	+7.4	+7.9	+9.4	+7.3	+7.9	+5.4	+6.3	+8.0
December	+7.9	+7.4	+7.7	+9.9	+7.8	+8.5	+5.8	+6.1	+7.9
January	+7.8	+7.6	+7.5	+10.0	+7.4	+7.9	+5.4	+5.9	+7.6
February	+7.9	+7.9	+7.6	+9.5	+7.5	+7.8	+5.1	+5.9	+8.0
March	+7.8	+7.9	+6.8	+9.9	+7.7	+8.2	+5.8	+6.1	+8.5
April	+7.8	+8.2	+6.6	+9.4	+7.8	+8.4	+5.6	+5.8	+8.4
May	+7.1	+7.3	+6.1	+8.7	+7.5	+7.5	+5.3	+5.0	+7.1
June	+7.2	+7.0	+6.2	+9.0	+7.9	+7.7	+5.4	+5.2	+6.9
1990-91—									
July	+6.8	+7.2	+5.4	+8.6	+7.1	+7.6	+5.0	+4.9	+7.0
August	+6.5	+6.8	+5.1	+8.0	+6.9	+7.6	+4.7	+5.0	+6.1
September	r+6.3	+7.1	+5.1	r+6.5	+6.7	+6.7	+4.2	+5.9	+6.5
October p	r+6.1	+7.0	+4.9	r+5.8	+6.8	+6.4	+4.1	+5.4	+6.4
November p	r+5.9	+6.9	+4.5	r+5.1	+6.4	+6.6	+4.4	+5.5	+6.7
December p	r+5.5	+6.4	+4.8	r+4.3	+6.0	+5.8	+4.3	+5.0	+7.4
January p	+5.4	+6.0	+5.1	+4.0	+5.6	+5.5	+4.1	+4.8	+6.4
	Change from previous month								
1989-90—									
November	+0.4	+0.3	+0.4	+0.6	+0.5	+0.3	-0.1	+0.5	+0.4
December	+0.5	+0.5	+0.2	+0.8	+0.7	+1.1	+0.5	+0.3	+0.2
January	+0.6	+0.7	+0.4	+0.9	+0.5	+0.5	+0.3	+0.1	+1.0
February	+0.4	+0.4	+0.5	+0.1	+0.5	+0.3	+0.4	+0.4	+0.6
March	+0.7	+0.9	+0.4	+0.8	+0.8	+0.6	+1.2	+0.5	+1.1
April	+0.9	+0.9	+0.6	+0.8	+0.8	+1.4	+0.4	+0.7	+0.8
May	+0.3	+0.1	+0.4	+0.3	+0.5	+0.5	+0.5	+0.2	-0.1
June	+0.3	—	+0.2	+0.6	+0.7	+0.8	+0.3	+0.2	—
1990-91—									
July	+0.4	+0.7	+0.2	+0.3	+0.2	+0.3	-0.1	+0.3	+0.7
August	+0.3	+0.3	+0.2	+0.1	+0.1	+0.3	+0.3	+0.5	+0.8
September	r+0.9	+1.2	+1.0	r+0.1	+0.8	+0.3	—	+1.6	+1.2
October p	+0.4	+0.7	+0.2	r+0.1	+0.4	+0.2	+0.4	-0.1	+0.4
November p	+0.2	+0.2	+0.1	r—	+0.2	+0.5	+0.1	+0.6	+0.6
December p	+0.2	—	+0.4	r—	+0.3	+0.4	+0.4	+0.2	+0.8
January p	+0.5	+0.3	+0.7	+0.7	+0.2	+0.2	+0.1	-0.1	+0.1

TABLE 2. PRICE INDEX OF MATERIALS USED IN BUILDING OTHER THAN HOUSE BUILDING
CONTRIBUTION OF MAJOR ITEMS TO CHANGE BETWEEN DECEMBER 1990 AND JANUARY 1991,
IN TERMS OF ALL GROUPS INDEX POINTS(a)

	Weighted average of six State capital cities	Individual cities						
		Sydney	Mel- bourne	Brisbane	Adelaide	Perth	Hobart	Canberra
ALL GROUPS	+1.1	+0.8	+1.6	+1.6	+0.4	+0.6	+0.2	+0.1
SELECTED MAJOR BUILDING MATERIALS								
Structural timber	+0.02	+0.05	—	+0.03	—	-0.04	-0.01	—
Joinery products(b)	+0.05	—	+0.08	+0.30	-0.12	—	+0.01	+0.07
Clay bricks	+0.06	—	+0.02	—	+0.25	+0.22	—	+0.02
Ready mixed concrete	+0.27	+0.01	+0.64	+0.65	+0.02	—	-0.12	—
Precast concrete products	+0.05	+0.05	+0.03	+0.06	—	+0.14	—	—
Galv. steel decking, etc.	+0.02	+0.01	—	—	—	+0.12	—	—
Structural steel	-0.03	-0.02	-0.05	+0.03	—	-0.13	—	—
Reinforcing steel, etc.	+0.08	+0.22	+0.01	+0.01	—	—	+0.07	+0.15
Aluminium windows	—	—	—	—	—	—	—	—
Aluminium screens, doors, etc.	+0.01	+0.03	—	—	+0.03	—	—	—
Suspended ceilings	-0.03	-0.10	-0.04	—	+0.01	-0.06	—	—
Steel windows, doors, etc.	+0.07	+0.09	+0.04	+0.12	+0.03	+0.07	—	—
Builders' hardware	+0.01	—	-0.01	+0.07	+0.03	+0.03	+0.03	—
Sand, aggregate and filling	+0.07	+0.06	+0.17	—	—	—	—	-0.01
Carpet	—	—	—	—	—	—	—	—
Paint	+0.02	—	+0.05	+0.02	—	+0.02	+0.01	—
Non-ferrous pipes	—	—	+0.03	—	-0.11	—	—	—
Plaster and plaster products	—	—	—	—	—	—	—	—
Conductors	-0.01	—	+0.01	-0.13	-0.01	—	—	-0.21
Switchboards and switchgear	+0.02	—	+0.06	+0.03	—	+0.01	+0.02	+0.04
Lamps and light fittings	+0.05	+0.04	+0.07	—	—	+0.11	+0.05	+0.02
Air conditioning equipment(c)	+0.24	+0.28	+0.27	+0.21	+0.27	+0.03	+0.06	+0.04
Fire protection	-0.05	-0.03	+0.01	-0.19	-0.11	-0.10	—	-0.01
Elevators and escalators	+0.03	+0.03	+0.01	+0.07	+0.03	+0.07	+0.05	+0.02

(a) For an explanation of this table see paragraph 21 of the Explanatory Notes. (b) Includes built in furniture, ready-made windows and doors, and other joinery products.
(c) Air conditioning excluding piping and electrical materials.

TABLE 3. INDEX NUMBERS BASED ON AUSTRALIAN STANDARD INDUSTRIAL CLASSIFICATION (ASIC)
WEIGHTED AVERAGE OF SIX STATE CAPITAL CITIES
(Base of each index: Year 1979-80 = 100.0)

Value weight(a)	Selected ASIC Groups										
	Wood and wood products (253) 7.97%	Clay products and refractories (286) 4.16%	Cement and concrete products (287) 15.42%	Basic iron and steel (294) 4.69%	Structural metal products (314) 29.24%	Sheet metal products (315) 3.68%	Other fabricated metal products (316) 2.77%	Appliances and electrical equipment (335) 9.70%	Industrial machinery and equipment (336) 8.79%	Other 13.58%	All groups 100.00%
1987-88	203.7	195.0	179.5	191.4	184.3	213.5	207.5	220.5	218.4	203.8	196.8
1988-89	225.9	218.0	195.7	211.5	200.5	233.2	227.3	247.0	227.7	222.8	214.9
1989-90	244.8	240.4	213.0	232.4	215.5	254.2	241.6	271.7	246.0	232.9	231.9
1989-90—											
November	242.5	238.8	210.5	229.9	213.3	252.0	239.0	270.6	243.7	232.6	230.0
December	243.3	240.0	212.3	231.3	214.6	253.1	238.5	272.4	245.8	232.4	231.2
January	245.7	240.5	215.4	235.8	215.9	253.6	239.1	271.8	246.9	232.9	232.6
February	246.5	242.4	216.1	236.7	216.8	255.4	244.3	271.2	248.9	233.9	233.5
March	247.9	244.6	216.9	238.3	217.7	258.2	246.8	277.3	250.7	233.8	235.2
April	248.7	246.1	217.1	239.7	220.1	262.9	248.6	282.7	252.1	235.1	237.2
May	250.0	246.2	218.3	240.0	220.6	263.6	247.5	283.5	250.7	236.6	237.8
June	250.6	246.8	220.0	240.2	221.7	263.6	247.8	282.7	251.3	237.3	238.6
1990-91—											
July	252.0	247.6	224.1	240.9	222.1	264.4	248.8	283.3	250.2	237.7	239.5
August	252.5	248.9	225.8	241.3	222.3	265.3	250.0	283.9	250.1	238.0	240.1
September	252.9	249.3	228.1	244.3	222.7	267.0	249.5	296.6	248.4	240.0	242.2
October p	253.8	249.2	229.5	245.3	222.7	273.8	249.9	297.3	249.0	241.6	243.1
November p	255.1	250.0	232.3	245.2	222.9	274.1	249.8	291.7	250.4	242.8	243.5
December p	254.4	249.5	233.9	246.2	223.9	274.7	252.1	289.2	250.5	243.7	244.0
January p	255.5	251.0	236.1	246.0	224.3	275.4	254.7	289.5	253.2	244.6	245.1

(a) Composition and weighting pattern as at reference base year 1979-80, see paragraph 3 of Explanatory Notes.

TABLE 4. INDEX NUMBERS FOR SELECTED BUILDING MATERIALS
WEIGHTED AVERAGE OF SIX STATE CAPITAL CITIES
(Base of each Index: Year 1979-80 = 100.0)

Material	1988-89		1989-90								1990-91						
	89	90	Nov.	Dec.	Jan.	Feb.	Mar.	Apr.	May	June	July	Aug.	Sept.	Oct. p.	Nov. p.	Dec. p.	Jan. p.
Structural timber	208.2	221.1	219.0	219.3	220.0	220.7	222.0	222.9	221.8	223.4	227.9	227.3	226.7	226.2	226.8	225.3	226.4
Hardwood	220.1	233.3	230.8	230.5	231.9	234.5	235.2	235.6	235.1	234.5	236.8	237.3	237.0	236.4	236.8	236.9	237.2
Softwood	189.5	201.6	200.0	200.7	200.8	200.0	201.6	202.9	201.3	204.8	210.9	209.7	208.9	208.5	209.2	206.7	208.3
Plywood, hardboard and softboard	212.8	229.0	223.2	225.1	231.1	233.7	235.5	235.4	235.1	232.2	233.5	234.5	233.6	233.8	235.3	236.5	239.8
Joinery products (a)	231.9	252.6	250.6	251.4	254.0	254.6	256.1	257.0	259.0	259.7	260.2	261.0	261.7	260.1	264.5	264.0	264.8
Clay bricks	221.2	245.7	244.7	246.2	246.3	246.3	249.2	251.1	251.1	252.1	252.5	253.3	253.3	252.9	253.7	253.6	255.7
Earthenware pipes and fittings	255.9	288.1	283.0	286.0	290.3	293.2	296.8	297.1	297.1	297.1	305.2	307.9	308.3	308.2	309.0	308.3	313.4
Ceramic tiles	172.3	176.5	176.3	176.2	177.2	176.5	176.4	177.5	177.5	177.4	178.1	177.9	178.2	178.6	180.9	179.7	178.6
Toilet suites and hand basins	263.7	301.2	295.0	295.4	295.7	314.8	315.7	316.2	316.8	316.6	316.5	322.7	326.9	327.4	325.0	323.7	323.9
Cement	205.2	217.4	217.2	217.2	217.4	218.7	218.9	220.6	223.4	223.6	228.2	228.2	230.0	230.2	231.4	235.3	238.5
Ready mixed concrete	193.7	210.3	208.0	209.6	213.7	214.1	214.3	213.9	214.5	216.8	222.1	224.3	226.7	228.5	232.6	234.6	237.2
Precast concrete products	198.9	218.3	215.7	217.5	217.8	219.4	221.5	222.9	225.7	225.9	226.8	226.4	228.9	229.6	229.5	229.6	231.1
Concrete masonry blocks	193.1	214.6	210.9	215.5	216.9	217.7	221.7	223.3	223.4	223.7	224.8	229.7	231.6	231.8	231.8	233.6	234.3
Galvanised steel decking, cladding, etc.	199.6	221.3	219.5	219.6	227.0	228.3	228.4	229.5	229.5	229.5	229.4	228.0	232.9	234.4	232.7	232.7	233.3
Cast iron pipes and fittings	263.9	289.1	289.2	289.5	284.6	284.6	296.0	296.8	297.9	299.2	303.0	305.8	305.9	306.0	314.3	315.7	316.4
Structural steel	204.3	219.0	216.7	219.7	221.8	223.2	222.1	222.2	222.3	222.5	223.6	224.2	223.8	224.2	223.9	224.1	223.8
Reinforcing steel bar, fabric and mesh	193.1	210.3	205.5	206.7	208.0	209.0	209.4	219.9	219.8	223.1	222.6	222.2	222.6	222.3	222.3	225.8	227.1
Aluminium windows	210.0	223.8	222.5	222.6	222.6	223.9	227.2	227.3	227.3	228.2	228.2	228.1	229.3	229.0	228.7	228.9	228.9
Aluminium screens, doors, louvres and other fabricated products	214.0	227.0	226.0	226.0	225.8	227.6	228.6	228.8	231.7	233.7	234.1	234.4	235.5	235.5	235.5	235.8	236.5
Suspended ceilings	187.9	201.8	202.4	202.5	202.5	202.6	203.3	203.7	204.7	205.5	205.3	205.4	206.0	205.7	207.6	207.6	206.7
Steel windows, doors, louvres, etc.	207.0	223.8	221.7	222.8	224.6	224.8	228.4	229.7	230.9	231.2	231.6	232.5	233.3	233.4	234.4	235.7	237.3
Urinals, baths and sinks	262.4	290.4	291.7	290.8	290.2	291.6	291.8	299.4	298.3	298.3	298.0	296.7	296.8	304.5	305.0	305.2	305.9
Builders' hardware (e.g. hinges, catches, handles, bolts, nails, etc.)	235.6	252.2	249.3	248.2	248.7	255.2	*58.8	260.6	259.4	259.6	261.1	261.1	261.3	261.6	261.6	261.7	262.4
Sand, aggregate and filling	235.2	252.4	248.3	248.7	255.1	255.0	*55.3	256.7	259.2	262.3	264.0	264.3	271.1	275.2	280.7	281.5	285.3
Carpet	224.1	227.8	227.6	229.0	229.0	227.6	227.4	227.4	227.9	228.2	232.4	233.4	232.9	233.4	233.5	232.9	232.9
Paint	228.4	254.1	255.6	255.5	254.8	255.0	257.6	260.6	261.5	263.2	262.1	261.7	272.1	272.5	271.7	278.1	280.8
Asphalt	213.2	227.8	226.5	226.7	227.3	227.4	231.9	232.6	233.2	236.8	237.3	237.4	239.4	247.5	250.2	250.5	250.5
Glass	216.1	218.0	218.2	218.2	218.2	218.4	218.4	218.5	216.6	217.0	215.4	215.1	215.7	214.9	214.9	210.9	211.6
Plaster and plaster products	208.4	219.4	219.5	219.4	219.4	219.4	219.5	222.4	222.7	222.6	222.5	223.9	224.6	229.3	233.9	233.9	233.9
Fibrous cement products	210.1	225.4	223.8	223.9	224.0	224.1	229.1	233.0	233.0	233.1	233.3	233.7	238.4	240.4	240.9	241.4	241.8
Non-ferrous pipes	209.7	215.6	220.3	216.5	212.2	210.8	212.2	215.5	220.6	218.1	217.5	220.8	224.4	224.3	222.4	220.3	220.2
Vinyl sheet and tiles	205.8	212.7	211.3	212.2	213.7	215.1	215.1	216.2	216.0	216.0	216.0	216.5	216.4	217.5	217.5	218.0	220.3

(a) Includes built in furniture, partitions, ready made windows and doors, and other joinery.

TABLE 5. INDEX NUMBERS FOR SELECTED MAJOR BUILDING MATERIALS
(Base of each index: Year 1979-80 = 100.0)

	Structural timber	Clay bricks	Ready mixed concrete	Precast concrete products	Galvanised steel decking, cladding, etc.	Structural steel	Reinforcing steel bar, fabric and mesh	Aluminium windows	Steel windows, doors, louvers, etc.	Builders' hardware	Sand, aggregate and filling	Carpet	Paint	Non-ferrous pipes
SYDNEY														
1987-88	167.5	157.6	180.3	181.0	196.6	175.1	173.3	196.7	190.9	219.2	259.7	222.1	205.3	174.9
1988-89	186.2	199.3	201.2	191.1	214.8	190.8	190.3	208.8	199.3	243.0	280.4	228.3	227.0	194.9
1989-90	198.2	235.5	221.4	208.2	236.2	203.5	206.6	216.8	209.8	260.1	299.1	230.4	253.4	200.6
1989-90—														
November	193.8	235.4	218.9	205.3	234.6	200.4	202.8	212.0	207.2	257.6	291.9	230.0	251.6	203.7
December	193.8	236.4	219.0	207.9	234.6	201.4	206.6	212.9	207.8	255.4	291.9	232.9	250.8	201.4
January	193.4	236.6	225.6	207.9	241.7	206.5	206.0	212.9	211.4	253.6	306.3	232.9	254.7	195.5
February	193.5	236.7	226.5	208.8	242.9	206.5	206.0	214.9	212.2	261.8	306.6	229.8	254.6	195.1
March	194.3	238.5	227.7	213.0	246.1	207.0	205.6	224.3	213.5	267.6	306.9	229.8	260.8	197.4
April	197.1	238.5	227.7	213.0	246.1	208.2	214.6	224.5	214.5	270.9	306.9	229.8	252.6	201.9
May	194.2	238.5	228.5	214.4	246.1	208.0	214.6	224.5	214.5	270.9	306.9	229.8	262.6	204.4
June	198.6	236.8	228.5	214.5	246.1	208.3	217.7	226.2	214.6	271.0	306.9	229.8	264.5	203.5
1990-91—														
July	208.6	235.8	240.6	215.1	246.1	209.6	215.8	226.2	215.7	271.5	308.7	237.1	264.5	201.8
August	206.8	235.9	244.6	215.1	245.5	210.1	215.2	226.2	215.7	271.5	308.7	237.1	264.5	207.5
September	206.1	235.9	245.9	216.9	250.0	210.2	215.2	226.2	216.8	271.5	322.9	237.1	276.9	209.3
October p	205.4	234.8	245.9	216.9	253.1	211.4	214.4	226.2	217.0	271.6	324.5	237.1	276.9	212.3
November p	206.7	235.5	254.0	217.1	247.8	210.3	214.4	226.2	216.6	271.9	333.4	237.1	276.9	209.2
December p	202.1	235.3	256.8	217.1	247.8	210.8	214.4	226.2	219.7	271.9	335.4	237.1	287.0	209.6
January p	205.3	235.5	256.9	218.5	248.1	210.6	218.0	226.2	221.7	271.9	338.7	237.1	287.0	209.6
MELBOURNE														
1987-88	190.2	233.8	159.7	173.1	155.5	175.5	179.2	170.4	180.5	212.1	186.6	211.8	231.0	195.2
1988-89	219.8	248.5	176.0	185.2	175.2	195.0	195.0	184.2	209.6	233.1	197.9	225.8	249.3	230.8
1989-90	225.9	264.8	183.7	204.4	195.0	210.4	209.5	206.1	233.4	246.5	211.8	230.8	282.0	234.4
1989-90—														
November	225.4	262.1	185.8	202.7	194.0	209.7	203.1	205.9	230.9	244.3	210.5	230.6	286.3	242.1
December	225.4	262.1	185.4	204.5	194.0	212.6	198.4	206.2	232.7	244.3	210.5	231.7	285.7	234.2
January	228.0	262.1	185.5	204.5	200.6	212.6	204.1	206.2	233.5	244.4	210.8	231.7	285.7	231.0
February	227.7	262.1	185.4	205.8	201.3	216.2	207.3	206.2	233.6	250.8	210.8	230.7	285.7	230.4
March	229.0	270.3	185.2	206.1	200.5	212.3	208.9	206.2	237.1	251.0	210.8	230.7	287.6	232.6
April	229.2	270.3	181.5	207.0	200.5	212.3	221.0	206.2	240.1	253.3	210.8	230.7	290.7	233.3
May	228.5	270.3	180.8	211.9	200.5	211.7	221.0	206.2	243.5	250.8	215.9	230.7	292.8	240.8
June	228.6	274.4	178.0	211.7	200.5	211.7	224.5	206.2	244.0	250.6	220.6	230.7	296.7	236.9
1990-91—														
July	229.2	274.4	181.1	211.9	200.5	210.8	224.5	206.2	244.0	256.6	221.5	234.8	296.7	238.5
August	228.8	274.4	183.6	210.4	196.4	211.3	224.5	206.2	245.3	256.6	222.3	234.8	296.7	241.3
September	227.1	274.4	189.5	212.2	202.8	209.2	224.5	206.6	245.5	256.6	228.8	234.8	306.8	244.0
October p	226.0	274.4	195.0	212.0	202.8	208.8	224.5	205.4	245.5	256.6	236.7	234.8	307.0	239.9
November p	225.7	274.4	196.8	211.3	202.8	209.2	224.5	204.6	245.5	256.8	239.5	234.8	307.0	239.6
December p	225.8	274.4	198.7	211.5	202.8	209.2	232.4	204.6	249.2	256.8	239.5	234.8	313.6	238.1
January p	236.0	275.1	204.9	212.6	202.8	208.7	232.5	204.6	250.2	256.2	248.8	234.8	320.3	239.3

TABLE 5. INDEX NUMBERS FOR SELECTED MAJOR BUILDING MATERIALS—continued
(Base of each index: Year 1979-80 = 100.0)

	Structural timber	Clay bricks	Ready mixed concrete	Precast concrete products	Galvanised steel decking, cladding, etc.	Structural steel	Reinforcing steel bar, fabric and mesh	Aluminium windows	Steel windows, doors, louvers, etc.	Builders' hardware	Sand, aggregate and filling	Carpet	Paints	Non-ferrous pipes
BRISBANE														
1987-88	183.6	182.0	184.2	202.4	181.7	197.1	167.3	174.5	182.8	202.1	225.8	201.8	178.0	177.5
1988-89	200.7	224.2	195.0	215.4	197.8	206.0	191.5	217.8	194.2	220.8	247.8	218.6	189.7	204.9
1989-90	218.2	256.8	227.3	235.8	222.9	220.3	214.7	232.7	212.2	236.1	269.3	222.9	209.0	212.5
1989-90—														
November	219.0	262.1	218.1	234.6	222.6	218.3	209.8	233.3	212.9	237.0	264.1	224.0	207.1	216.2
December	219.2	262.0	225.3	235.1	222.6	221.7	213.5	233.3	212.1	234.5	264.1	224.0	210.1	213.3
January	219.7	262.0	236.6	235.6	227.1	222.3	213.5	233.3	212.6	235.8	273.3	224.0	210.1	211.0
February	220.4	262.1	237.8	234.7	227.8	222.6	213.5	233.3	213.1	236.9	273.3	224.0	212.5	214.6
March	220.7	263.0	237.8	239.5	230.7	223.2	213.5	233.2	215.1	240.1	274.2	221.7	212.5	214.6
April	221.2	267.9	238.6	240.7	230.1	223.2	224.2	233.2	215.2	240.8	276.3	221.7	212.5	210.0
May	219.1	268.3	249.1	240.8	230.2	224.8	224.3	233.2	216.9	234.5	280.4	221.7	212.5	213.4
June	219.1	270.5	250.5	240.5	230.2	224.8	228.6	233.2	216.9	234.9	283.2	224.3	212.5	239.9
1990-91—														
July	218.3	270.0	251.8	240.5	230.2	227.6	229.5	233.2	216.7	234.8	290.1	224.3	202.7	209.1
August	219.5	270.0	251.8	240.5	230.2	228.0	229.5	233.2	218.5	234.4	290.1	224.3	198.7	208.7
September	219.5	269.5	253.4	244.4	232.0	229.3	232.2	230.1	221.6	235.4	290.1	219.6	215.6	218.2
October p	220.2	269.5	255.4	244.4	235.3	229.6	232.2	230.1	221.6	236.1	291.0	224.3	215.6	214.7
November p	220.5	273.4	256.2	244.4	237.7	229.6	232.2	230.1	223.5	233.3	292.7	224.3	212.9	211.6
December p	221.3	272.9	256.6	244.4	237.7	229.8	234.5	230.1	222.6	235.4	292.9	219.6	218.4	211.6
January p	223.3	272.9	262.9	246.3	237.7	230.1	234.7	230.1	225.6	232.9	292.9	219.6	221.6	212.1
ADELAIDE														
1987-88	210.3	224.6	187.8	221.5	195.2	203.4	180.6	227.2	218.9	231.3	188.1	196.0	217.5	184.6
1988-89	227.4	237.0	210.4	238.2	206.3	219.3	194.5	249.5	234.0	254.0	195.5	214.0	237.9	210.0
1989-90	261.7	252.5	219.8	266.0	227.6	236.2	212.1	262.5	247.3	278.1	206.0	218.8	250.8	212.7
1989-90—														
November	262.0	246.2	218.5	260.9	223.2	234.5	207.3	261.5	247.0	270.6	202.5	218.2	260.8	216.3
December	263.0	257.0	217.9	261.1	223.2	238.2	210.3	261.5	249.3	270.5	203.6	218.2	260.8	215.9
January	263.2	257.0	219.3	262.9	236.7	239.1	210.3	261.5	251.3	270.8	203.6	218.2	239.9	206.7
February	263.5	257.0	219.4	270.3	237.4	239.2	210.3	265.2	251.3	282.8	205.1	218.2	239.9	207.2
March	265.4	257.0	227.7	272.2	237.8	239.7	210.3	265.2	251.3	288.6	205.1	218.2	239.9	207.2
April	265.6	257.0	211.5	275.3	237.8	239.9	211.5	265.4	251.3	288.6	213.0	218.2	249.7	211.3
May	265.6	257.0	224.5	280.4	237.8	241.2	221.5	265.4	251.3	288.6	214.9	221.5	251.5	220.8
June	265.7	257.0	226.1	282.8	237.8	242.2	224.9	267.3	251.6	289.9	215.9	221.5	251.5	221.2
1990-91—														
July	269.0	264.2	225.8	282.8	237.8	244.1	234.0	268.0	251.6	287.3	215.9	225.6	251.5	219.8
August	269.0	264.5	226.1	284.6	237.7	244.4	222.6	269.0	251.6	287.3	215.9	226.7	252.7	221.1
September	269.2	264.5	226.2	286.4	242.9	246.6	222.6	270.5	251.1	287.3	215.9	226.7	256.5	226.0
October p	269.2	264.5	226.1	290.3	242.9	245.3	222.6	270.5	251.9	287.6	223.3	226.7	256.5	231.7
November p	269.2	264.5	226.4	290.7	243.2	245.3	222.6	270.5	250.0	287.3	228.0	226.7	256.5	226.9
December p	269.2	264.5	227.4	290.5	243.2	246.2	226.6	272.1	251.7	287.3	228.0	226.7	258.1	218.1
January p	269.2	273.6	227.6	290.5	243.2	246.2	226.6	272.1	252.3	289.2	228.0	226.7	258.1	213.6

TABLE 5. INDEX NUMBERS FOR SELECTED MAJOR BUILDING MATERIALS—continued
(Base of each index: Year 1979-80 = 100.0)

	Structural timber	Clay bricks	Ready mixed concrete	Precast concrete products	Galvanized steel sheet, decking, cladding, etc.	Structural steel	Reinforcing steel bar, fabric and mesh	Aluminum windows	Steel windows, doors, louvers, etc.	Builders' hardware	Sand, aggregate and filling	Carpet	Paint	Non-ferrous pipes
PERTH														
1987-88	189.8	188.5	182.5	182.6	185.2	221.0	183.8	216.8	202.2	208.7	200.0	213.3	190.0	189.1
1988-89	220.2	205.6	200.4	199.9	207.9	255.8	199.4	231.7	214.1	222.6	223.4	223.9	214.6	213.4
1989-90	239.2	217.4	220.5	218.6	232.1	273.3	219.5	244.3	236.3	240.6	248.1	227.2	241.8	228.6
1989-90—														
November	239.0	215.2	214.0	215.4	227.8	268.7	215.2	245.5	231.3	234.1	246.9	226.5	242.1	234.6
December	238.5	215.2	222.1	218.1	229.0	277.3	218.1	245.5	233.2	234.2	249.2	227.3	241.9	232.5
January	238.8	215.2	223.3	218.2	238.2	279.2	217.7	245.6	233.2	235.8	250.2	227.3	243.9	232.5
February	239.8	215.2	223.3	222.0	240.6	281.1	217.7	247.3	232.1	245.3	246.1	227.5	243.2	217.1
March	241.6	224.7	223.2	222.6	240.6	278.9	217.7	247.3	249.2	249.7	250.0	227.5	245.9	229.7
April	243.2	224.7	223.2	222.3	240.6	275.6	229.5	247.3	249.9	250.4	250.0	227.5	246.4	236.0
May	241.1	224.7	223.2	225.0	240.6	275.0	229.5	247.6	249.9	250.4	251.4	228.1	246.4	236.0
June	242.0	224.7	238.0	225.5	240.6	274.7	232.1	248.1	250.2	250.6	263.4	228.1	245.8	230.5
1990-91—														
July	247.1	224.7	238.0	231.2	240.6	277.9	232.2	248.1	250.7	250.6	263.2	228.1	246.6	228.2
August	247.3	232.0	238.0	229.9	240.6	278.7	233.2	248.1	252.7	250.6	263.4	236.0	246.6	231.7
September	248.3	232.0	238.0	236.0	246.5	278.7	233.4	260.4	253.0	250.6	262.4	236.0	251.1	234.9
October p	248.4	232.0	238.0	236.2	246.8	278.5	233.2	260.4	252.5	251.4	262.2	236.0	254.5	232.5
November p	250.3	232.0	245.5	236.9	245.0	278.0	233.2	260.4	252.5	251.4	273.1	236.0	249.2	234.6
December p	249.4	232.0	246.6	236.9	245.0	277.3	236.7	260.4	254.0	251.7	273.4	236.0	250.0	226.4
January p	246.9	239.9	246.7	241.2	250.2	275.9	236.7	260.4	255.7	253.5	273.4	236.0	253.1	226.4
HOBART														
1987-88	217.2	182.6	162.1	194.9	193.9	189.4	171.7	213.6	185.9	192.3	172.9	199.6	195.6	159.1
1988-89	229.6	192.2	180.4	212.2	216.0	211.9	185.6	225.6	201.9	202.4	174.9	212.5	214.2	173.7
1989-90	247.8	199.8	188.4	229.3	237.5	225.1	203.4	229.3	211.3	217.1	183.6	221.3	226.8	174.9
1989-90														
November	245.9	199.2	185.1	226.5	236.4	223.3	199.6	229.3	210.8	216.2	184.4	221.3	228.8	169.8
December	245.9	199.2	184.7	226.5	236.4	224.3	204.9	229.3	211.0	216.2	184.4	221.4	228.0	165.9
January	250.0	199.2	185.4	226.5	238.4	224.3	204.9	229.3	211.0	216.2	184.4	221.4	227.8	165.9
February	248.3	199.2	187.3	226.5	245.3	224.3	204.9	229.3	211.0	219.3	184.7	221.4	228.1	169.7
March	254.4	199.2	192.7	235.4	245.3	226.5	206.1	229.3	214.4	219.1	184.7	221.4	228.6	180.8
April	255.2	199.2	192.0	235.4	245.3	227.0	209.5	229.8	214.4	224.1	184.7	223.8	228.0	180.8
May	256.7	199.2	194.2	235.4	245.3	229.7	206.1	229.8	214.4	225.3	184.7	226.7	228.4	179.8
June	255.8	206.9	196.4	235.4	245.3	229.7	206.9	229.8	214.6	223.6	192.8	226.7	228.4	174.3
1990-91—														
July	255.8	207.1	199.1	235.4	241.9	229.7	207.3	229.9	214.8	220.7	192.8	226.9	228.4	171.0
August	257.5	207.1	199.3	235.4	241.9	233.6	207.3	218.4	218.3	220.9	193.2	229.1	230.3	177.4
September	257.5	207.1	199.9	236.5	243.2	234.3	207.3	218.4	218.6	226.3	194.9	229.1	233.8	179.8
October p	258.1	207.1	200.6	249.3	243.2	235.1	206.1	218.4	218.6	228.6	196.9	229.1	235.7	185.7
November p	258.1	210.0	200.8	249.3	243.2	235.1	206.1	218.4	218.6	228.8	196.9	229.5	236.6	184.8
December p	258.8	210.0	199.3	249.3	241.9	236.2	214.6	218.4	218.8	229.0	196.9	229.5	240.5	183.1
January p	258.1	210.0	198.1	249.3	241.9	236.2	215.8	218.4	218.8	230.7	196.9	229.5	241.5	183.1

TABLE 6. INDEX NUMBERS FOR SPECIAL COMBINATIONS OF BUILDING MATERIALS
(Base of each index: Year 1979-80 = 100.0)

Value weight(a)	Electrical materials										Mechanical services components				Plumbing materials		
	All groups excluding electrical materials and mechanical services	Conductors 20.96%	Cables and accessories 9.87%	Switch-boards and switch-gear 28.52%	Lamps and light fittings 40.25%	All electrical materials 100.00%	All electrical materials excluding lamps and light fittings SYDNEY	Air conditioning 72.81%	Fire protection 13.04%	Elevators and escalators 14.15%	All mechanical services 100.00%	Hydraulic plumbing 50.55%	Drainage 14.52%	Roof and roof plumbing 34.93%	All plumbing materials 100.00%		
1987-88	190.9	325.3	226.0	196.3	190.5	223.9	246.5	208.9	195.7	261.8	214.6	212.0	205.8	201.7	207.5		
1988-89	208.2	387.5	236.1	190.4	207.5	246.3	278.5	220.4	223.2	269.9	227.7	237.7	222.1	222.1	230.0		
1989-90	223.1	478.5	268.5	217.4	207.5	273.2	317.5	237.6	244.2	301.1	247.4	250.5	245.2	243.5	247.3		
1989-90—																	
November	230.8	479.5	263.6	214.9	210.2	273.3	315.8	235.6	242.3	301.5	245.7	252.1	244.9	243.0	247.9		
December	221.7	479.9	263.8	219.0	209.6	274.3	318.0	237.3	242.8	303.9	247.3	252.4	245.0	242.5	247.9		
January	223.9	480.7	265.6	219.2	205.6	273.1	318.6	237.6	245.4	305.5	248.2	247.2	242.4	246.0	246.1		
February	224.8	475.9	270.6	220.5	208.4	274.1	318.4	239.1	245.5	306.9	249.5	249.6	243.8	246.9	247.8		
March	226.1	507.9	274.8	220.8	208.6	281.4	330.5	241.5	247.7	308.8	251.7	250.3	250.5	249.1	249.9		
April	228.2	526.7	275.9	220.1	208.6	285.2	336.9	242.9	252.1	315.7	254.3	253.2	250.5	252.3	252.5		
May	228.6	529.5	277.9	221.0	208.3	286.2	337.6	243.1	252.5	308.1	253.5	254.1	251.0	252.3	253.0		
June	229.1	508.1	276.4	222.7	209.1	282.3	331.1	243.1	252.6	306.4	253.2	255.7	252.8	252.3	254.1		
1990-91—																	
July	231.3	507.4	276.3	222.7	209.4	282.3	331.4	242.5	253.0	308.5	253.1	253.4	256.3	252.3	255.0		
August	232.2	511.3	278.6	224.3	210.1	284.1	333.9	242.7	253.5	309.7	253.5	260.9	255.9	254.0	257.8		
September	233.3	605.8	278.7	234.1	215.4	306.0	367.0	245.3	257.8	300.8	254.7	260.5	261.1	259.6	260.3		
October p	233.9	617.3	282.1	236.1	215.4	309.3	372.6	252.2	258.4	301.4	259.9	264.8	262.5	261.8	263.4		
November p	235.5	585.7	278.6	225.9	208.7	299.6	340.8	252.2	257.7	303.2	260.1	263.9	264.6	258.3	262.1		
December p	236.4	554.3	281.8	227.6	208.7	293.8	351.2	251.5	257.8	303.8	259.6	266.5	265.7	259.3	263.9		
January p	237.1	554.3	284.2	227.6	209.9	294.6	351.6	254.0	256.1	305.1	261.4	266.6	268.2	259.3	264.3		
MELBOURNE																	
1987-88	184.7	283.2	195.4	211.3	204.4	222.0	233.9	210.3	188.5	360.9	214.6	208.3	209.2	169.6	194.8		
1988-89	203.0	364.8	213.0	232.1	223.2	254.4	275.5	225.4	196.7	277.9	229.1	225.1	189.0	189.0	217.1		
1989-90	218.6	418.2	219.3	251.3	229.8	274.5	304.6	244.7	209.9	296.2	246.0	248.4	246.9	211.5	235.3		
1989-90—																	
November	217.9	417.5	212.5	249.7	230.8	273.6	302.4	241.8	208.6	284.6	243.5	249.5	244.9	210.3	235.2		
December	218.0	415.8	213.8	253.4	231.3	274.6	303.8	244.0	209.2	285.3	245.3	247.4	244.9	210.3	234.3		
January	218.0	412.3	214.5	253.6	229.1	273.1	302.8	244.6	210.5	285.8	246.0	246.9	244.9	215.4	235.6		
February	220.1	406.0	218.9	253.6	230.9	273.0	301.3	247.0	211.5	286.6	248.0	248.8	244.9	217.9	237.4		
March	220.7	424.4	226.2	253.6	230.3	277.3	309.0	249.6	211.7	286.0	249.8	250.4	255.2	218.2	239.8		
April	221.7	440.8	227.5	254.2	229.4	280.7	315.3	251.2	211.9	291.6	251.8	252.6	255.3	218.7	241.1		
May	222.5	440.4	231.3	256.6	229.4	281.7	316.9	252.2	213.4	291.9	252.7	255.5	256.4	218.6	242.8		
June	223.0	446.0	235.7	259.3	225.4	282.5	320.9	253.0	213.6	292.2	253.4	254.3	256.4	218.7	242.2		
1990-91—																	
July	223.8	445.8	235.7	259.0	227.1	283.0	320.7	251.8	213.8	292.4	252.6	255.3	258.3	218.7	242.9		
August	224.5	437.7	228.4	260.6	231.3	283.8	317.4	251.5	214.2	292.8	252.5	257.2	261.9	216.0	243.5		
September	226.0	508.2	229.6	255.7	232.3	296.6	340.0	251.8	215.0	292.8	252.8	258.1	268.3	223.4	247.4		
October p	226.7	505.7	230.9	255.9	232.5	296.4	339.4	252.4	215.4	286.5	252.4	256.3	266.9	223.5	246.4		
November p	227.3	499.0	231.3	257.5	228.0	292.9	337.9	252.5	215.0	287.7	252.6	256.4	268.4	223.5	246.6		
December p	228.4	499.0	236.3	257.0	234.9	292.8	338.5	252.3	221.7	288.1	253.4	256.5	268.4	223.2	246.4		
January p	230.0	499.8	236.3	259.2	227.0	294.4	339.8	254.8	222.4	288.5	255.4	258.8	268.8	223.5	247.9		

For footnote see end of table.

TABLE 6. INDEX NUMBERS FOR SPECIAL COMBINATIONS OF BUILDING MATERIALS—continued
(Base of each Index: Year 1979-80 = 100.0)

Value weight (a)	All groups excluding electrical materials and mechanical services	Electrical materials						Mechanical services components				Plumbing materials			
		Conductors 20.96%	Conduit and accessories 9.87%	Switchboards and switchgear 28.92%	Lamps and light fittings 40.25%	All electrical materials 100.00%	All electrical materials excluding lamps and light fittings	Air conditioning 72.81%	Fire protection 13.04%	Elevators and escalators 14.15%	All mechanical services 100.00%	Hydraulic plumbing 50.53%	Drainage 14.52%	Roof and roof plumbing 34.93%	All plumbing 100.00%
1987-88	190.0	261.6	222.0	207.2	180.6	209.4	228.1	200.0	186.9	261.0	206.9	200.5	194.3	184.7	194.1
1988-89	208.7	335.6	255.0	227.0	199.3	241.4	269.7	213.3	210.5	275.6	206.9	228.6	215.3	202.2	217.5
1989-90	228.0	441.5	276.5	242.4	198.5	269.8	317.9	231.1	233.4	304.1	241.7	240.7	240.6	227.5	236.1
1989-90—															
November	225.9	434.6	272.0	240.0	202.4	268.8	315.5	229.9	224.0	304.0	239.6	241.3	234.9	226.1	235.0
December	227.6	441.2	270.7	243.4	203.0	271.3	317.3	230.7	235.7	305.6	239.6	239.1	238.9	226.1	235.0
January	230.2	446.4	273.8	244.1	203.2	273.0	320.0	231.3	238.7	306.9	243.0	238.9	241.8	230.6	236.4
February	230.8	443.6	272.5	244.1	192.2	267.8	318.8	233.1	238.7	307.4	244.3	241.6	242.1	232.3	238.4
March	232.0	481.9	275.1	244.5	192.2	276.2	322.8	235.6	238.7	311.0	246.7	243.8	252.1	236.0	242.3
April	233.1	501.2	293.1	245.2	193.4	282.8	342.9	235.7	246.4	319.5	248.9	242.8	251.9	234.8	241.3
May	233.8	504.3	298.5	247.9	193.4	284.7	346.2	236.5	246.4	310.9	248.3	244.2	252.2	235.8	242.4
June	235.9	504.3	299.6	248.1	193.4	284.9	346.5	235.9	246.1	310.1	247.7	241.3	251.4	235.8	240.9
1990-91—															
July	236.7	502.7	293.6	252.3	196.2	286.3	347.0	236.1	246.1	312.7	248.2	241.2	255.8	235.8	241.4
August	237.1	502.7	294.3	252.4	196.2	286.4	347.1	235.7	246.1	314.6	248.3	239.6	255.0	235.2	240.5
September	238.7	479.5	264.1	249.3	194.2	276.8	332.5	234.7	255.1	307.4	247.7	243.0	263.1	237.0	243.8
October p	239.7	456.8	264.6	249.9	194.2	272.3	324.9	234.8	254.6	307.6	247.7	243.7	263.9	240.1	245.4
November p	240.6	413.7	265.5	251.1	195.6	264.3	310.6	234.8	254.6	308.2	247.8	242.5	263.2	243.3	245.8
December p	241.0	391.6	267.6	254.4	195.6	260.8	304.7	235.1	254.6	308.4	248.0	245.1	263.3	243.3	247.1
January p	243.0	384.7	270.0	255.4	195.7	259.9	303.2	236.8	245.0	311.4	248.4	247.2	264.4	243.3	248.3
ADELAIDE															
1987-88	202.6	289.7	187.6	201.4	181.3	210.4	230.1	205.8	191.6	260.9	211.7	207.6	220.0	193.3	204.4
1988-89	219.7	307.6	191.3	218.0	190.0	222.9	245.0	219.4	195.9	275.5	224.3	234.1	235.2	202.9	223.4
1989-90	235.6	390.7	194.0	230.2	191.6	244.7	280.5	235.2	200.5	303.2	240.3	248.7	261.0	223.0	241.5
1989-90—															
November	233.4	386.1	191.3	228.3	190.4	242.5	277.5	230.9	195.4	303.9	236.6	250.5	260.9	219.1	241.1
December	234.7	393.0	192.5	229.5	190.4	244.4	280.7	234.3	197.5	305.5	239.6	249.9	262.7	219.1	241.0
January	235.9	395.0	194.1	229.5	191.1	244.8	281.0	235.1	202.2	308.8	240.9	245.8	262.9	230.2	242.9
February	237.3	392.5	194.3	229.1	191.2	244.7	280.7	236.3	202.1	307.8	242.0	249.2	263.0	232.1	245.2
March	238.2	419.9	194.1	233.9	193.7	252.8	292.6	240.5	203.7	310.0	245.5	251.0	267.6	232.4	246.9
April	240.0	433.8	194.1	234.8	190.2	254.5	297.9	241.9	206.0	316.8	247.8	254.9	266.0	232.4	248.5
May	241.4	433.8	199.5	234.8	190.2	255.1	298.8	243.3	206.1	307.7	247.6	255.5	267.8	232.4	249.2
June	243.1	433.8	202.2	238.6	194.9	258.3	301.1	245.6	205.5	306.2	248.9	255.8	267.9	232.4	249.4
1990-91—															
July	243.9	433.8	202.2	238.9	194.9	258.4	301.2	246.1	205.8	307.8	249.6	255.9	268.6	232.4	249.6
August	244.0	433.1	204.8	238.7	194.9	258.5	301.3	247.2	207.4	308.2	250.7	256.6	267.1	232.4	249.7
September	244.7	480.9	203.7	239.1	195.2	268.6	318.1	253.6	210.2	297.5	254.2	256.6	264.8	238.5	251.5
October p	245.6	485.0	203.1	240.5	195.2	269.5	319.6	254.7	211.2	297.9	254.7	256.0	264.0	238.5	251.7
November p	246.1	476.6	202.4	241.5	195.2	268.3	317.5	256.0	211.9	299.2	256.3	257.8	264.8	238.8	254.3
December p	246.8	476.6	215.1	245.9	194.7	270.6	321.8	255.6	211.9	299.7	256.1	260.3	274.7	237.3	254.4
January p	247.2	475.9	216.6	246.0	194.7	270.6	321.8	257.7	206.2	301.3	257.1	259.0	274.7	237.3	253.7

For footnote see end of table.

TABLE 6. INDEX NUMBERS FOR SPECIAL COMBINATIONS OF BUILDING MATERIALS—continued
(Base of each index: Year 1979-80 = 100.0)

Value weight ^a	Electrical materials										Mechanical services components				Plumbing materials			
	All groups excluding electrical materials and mechanical services	Conduit and accessories		Switch-boards and switch-gear	Lamps and light fittings	All electrical materials		All electrical materials excluding lamps and light fittings	Mechanical services components				Plumbing materials					
		Conductors 20.9%	20.9%	9.87%	28.92%	40.25%	100.00%		Air conditioning 72.81%	Fire protection 13.04%	Elevators and escalators 14.13%	All mechanical services 100.00%	Hydraulic plumbing 50.53%	Drainage 14.52%	Roof and roof plumbing 34.93%	All plumbing materials 100.00%		
PERTH																		
1987-88	194.5	377.1	209.1	234.0	203.6	238.1	261.3	208.3	196.9	261.1	214.3	191.6	202.0	185.6	191.0			
1988-89	214.3	439.3	236.3	238.0	213.0	270.0	308.4	222.5	228.6	275.8	230.9	211.8	219.7	207.8	211.6			
1989-90	232.7	508.8	251.1	250.3	211.0	288.8	341.3	237.5	244.4	304.5	247.9	233.9	246.0	231.9	234.9			
1989-90—																		
November	229.5	496.2	244.7	246.6	209.1	283.7	334.0	237.6	241.2	304.2	247.5	233.9	246.5	228.6	233.9			
December	232.3	499.5	247.6	249.0	211.7	286.4	336.8	238.6	242.7	305.8	248.6	233.4	247.0	229.5	234.0			
January	233.7	499.5	250.0	251.2	210.8	286.9	338.2	238.8	244.4	307.1	249.2	233.4	247.0	236.3	236.4			
February	234.9	498.2	250.3	252.9	209.6	286.7	338.7	237.2	245.3	307.6	248.2	234.7	246.3	240.1	238.3			
March	236.7	502.4	251.0	253.2	209.6	287.7	340.4	237.4	246.9	311.2	249.1	234.8	249.4	240.8	239.0			
April	238.3	570.7	262.0	257.0	209.6	304.2	368.0	241.2	253.2	320.0	253.9	242.2	248.6	240.8	242.6			
May	238.6	570.6	264.3	257.6	209.6	304.6	368.7	241.4	253.5	311.9	253.0	244.1	256.3	240.8	244.7			
June	241.0	570.6	267.4	259.3	209.7	305.5	370.0	242.3	255.5	311.0	253.7	242.2	257.7	240.8	244.0			
1990-91—																		
July	242.1	574.7	265.3	260.1	209.7	306.4	371.5	240.2	256.0	313.7	252.6	242.7	264.2	240.8	245.2			
August	242.7	574.9	267.4	260.4	210.0	306.8	372.0	242.0	256.6	315.7	254.3	243.3	257.2	240.8	244.4			
September	244.2	572.1	267.4	260.9	207.8	305.5	371.3	240.7	256.5	308.5	252.3	244.1	259.3	245.2	246.7			
October p	244.9	572.1	269.1	260.9	208.0	305.7	371.5	240.4	256.4	308.7	252.2	243.9	259.1	247.1	247.3			
November p	246.2	572.1	269.7	263.0	208.2	306.5	372.7	242.0	257.2	309.4	253.5	243.8	261.5	245.8	247.1			
December p	247.2	579.1	277.7	262.9	205.4	307.6	376.4	241.9	259.2	309.6	252.7	243.0	261.5	245.8	246.7			
January p	247.9	579.1	278.1	263.5	206.4	309.0	376.7	242.0	254.3	312.8	253.6	242.9	273.4	249.5	249.7			
HOBART																		
1987-88	182.5	255.7	203.8	244.7	179.8	216.9	241.8	195.9	186.5	265.0	204.4	176.2	172.5	189.3	180.2			
1988-89	198.0	306.6	225.4	265.8	190.4	240.1	273.4	206.5	213.1	287.5	218.8	186.6	186.2	208.2	197.3			
1989-90	209.2	353.2	223.9	278.4	190.3	253.2	295.7	222.4	220.5	308.6	234.3	202.5	204.2	232.3	213.1			
1989-90—																		
November	207.6	334.9	225.4	276.7	191.0	249.3	288.6	219.6	216.6	305.7	231.4	199.2	201.7	231.2	210.7			
December	208.0	364.2	224.8	278.2	191.5	256.1	299.5	219.9	216.6	306.5	231.7	197.1	201.7	231.4	209.7			
January	208.6	365.0	222.5	278.5	187.6	254.5	299.6	221.6	216.6	307.7	233.2	198.7	201.8	232.9	211.1			
February	209.3	364.1	223.4	278.9	188.4	254.9	297.7	224.2	216.7	306.5	235.1	202.7	201.8	239.7	215.5			
March	211.5	379.4	223.4	281.1	188.4	258.7	306.1	227.0	228.3	311.2	239.1	206.8	209.6	239.7	218.7			
April	212.3	374.2	224.4	282.5	188.4	258.1	305.1	227.3	228.3	324.7	241.2	207.4	209.6	239.7	219.0			
May	213.4	382.3	224.4	282.6	188.4	259.9	308.0	228.5	228.3	319.4	241.3	209.0	209.6	239.7	219.8			
June	214.0	394.9	222.1	284.7	189.8	263.4	313.0	228.3	228.3	319.2	241.2	207.5	209.6	239.7	219.0			
1990-91—																		
July	213.9	386.0	222.0	285.1	189.6	261.6	310.1	227.0	228.3	320.8	240.4	204.9	209.1	237.3	216.8			
August	214.5	386.0	222.4	285.4	189.6	261.7	310.3	228.6	228.3	323.4	242.0	209.7	211.1	237.5	219.7			
September	215.2	384.6	230.9	287.3	182.1	259.8	312.1	225.8	228.3	322.8	239.9	210.8	218.8	240.1	221.6			
October p	216.2	385.4	230.9	287.4	182.1	260.0	312.2	228.7	228.3	323.1	240.0	210.0	224.1	240.4	234.3			
November p	216.9	386.2	230.9	287.5	182.0	254.5	303.3	230.5	228.3	324.2	243.5	212.4	225.1	240.4	234.2			
December p	217.5	351.6	241.9	300.6	182.1	257.8	308.8	230.4	228.3	324.6	243.5	212.7	225.1	240.4	234.2			
January p	217.6	351.6	245.3	301.5	183.5	258.9	309.8	231.0	228.3	326.8	244.2	212.5	225.1	239.5	223.7			

For footnote see end of table.

TABLE 6 INDEX NUMBERS FOR SPECIAL COMBINATIONS OF BUILDING MATERIALS—continued
(Base of each index: Year 1979-80 = 100.0)

Value weight(a)	Electrical materials											Plumbing materials			
	All groups excluding electrical materials and mechanical services	Conductors and accessories			Switch-boards and switch-gear	Lamps and light fittings	All electrical materials	All electrical materials excluding lamps and light fittings	Mechanical services components			Hydraulic plumbing	Drainage	Roof and roof plumbing	All plumbing materials
		20.96%	9.87%	28.92%	40.25%	100.00%	72.81%	13.04%	Air conditioning	Fire protection	Elevators and mechanical escalators				
WEIGHTED AVERAGE OF SIX STATE CAPITAL CITIES															
1987-88	190.5	301.3	210.3	206.5	193.5	221.5	240.3	207.5	192.0	261.3	213.1	206.1	205.8	187.5	199.6
1988-89	208.5	369.7	232.8	222.9	206.2	247.9	276.0	230.8	211.2	274.5	227.2	231.5	222.6	206.2	221.4
1989-90	224.5	447.7	244.5	236.4	211.2	271.3	311.9	238.3	227.5	297.9	245.3	245.7	246.1	228.6	239.8
1989-90—															
November	222.6	444.8	239.3	234.1	212.6	270.1	308.9	236.0	224.3	297.6	243.2	246.8	244.7	227.1	239.6
December	223.6	446.9	240.0	237.5	212.9	271.7	311.4	237.9	226.5	299.2	245.1	245.9	245.5	227.4	239.4
January	225.3	446.9	241.6	237.9	210.7	271.1	311.8	238.5	228.9	300.3	246.0	243.5	244.9	232.3	239.8
February	226.3	442.8	244.6	238.5	210.8	270.8	311.2	239.8	229.3	301.3	247.2	245.8	245.4	234.2	241.7
March	227.4	467.9	248.5	239.3	210.9	276.7	321.0	242.3	230.7	302.9	249.3	247.0	253.0	235.7	243.9
April	229.0	490.3	252.7	239.8	210.4	281.8	329.8	243.8	234.2	310.0	251.9	249.7	252.9	236.8	245.7
May	229.7	491.7	256.0	241.2	210.4	282.8	331.5	244.4	234.8	304.4	251.7	251.4	254.2	236.9	246.8
June	230.7	486.0	257.4	243.3	210.0	282.2	330.8	244.9	235.0	303.5	251.9	251.1	254.9	237.0	246.7
1990-91—															
July	232.0	485.8	256.4	243.9	210.9	282.6	330.8	244.2	235.3	305.1	251.7	251.6	258.0	236.9	247.4
August	232.6	484.7	255.8	244.9	212.4	283.2	330.8	244.5	235.8	306.2	252.1	253.8	258.0	236.7	248.5
September	233.9	540.4	252.4	243.1	214.0	294.6	348.9	245.9	239.0	300.2	252.5	254.5	262.7	242.2	251.4
October p	234.6	541.3	254.2	244.0	214.1	295.3	350.0	248.6	239.3	298.7	254.5	255.9	264.3	243.6	252.8
November p	235.7	521.5	253.2	245.1	210.0	289.7	343.4	249.0	239.1	300.0	255.0	255.4	265.7	242.6	252.4
December p	236.6	508.3	258.4	246.6	209.4	287.6	340.4	248.7	241.3	300.4	255.0	256.4	265.9	242.7	253.0
January p	237.7	507.6	259.9	247.5	210.8	288.4	340.8	250.8	238.6	301.9	256.4	257.5	268.3	243.2	254.1

(a) Composition and weighting as at reference base year 1979-80; see paragraph 3 of Explanatory Notes.

TABLE 7. INDEX NUMBERS FOR SELECTED MAJOR BUILDING MATERIALS—CANBERRA
(Base of each index: year 1986-87 = 100.0)

	Structural timber	Clay bricks	Ready mix concrete	Precast concrete products	Galvanized steel cladding, cladding, etc.	Structural steel	Aluminium windows	Steel windows, doors, louvers, etc.	Builders' hardware	Carpet	Paints	Non- ferrous pipes
1987-88	107.7	104.5	109.2	106.1	111.8	109.2	116.0	111.4	105.6	123.9	110.5	124.5
1988-89	123.8	132.8	112.6	116.0	122.6	118.8	143.3	121.1	113.3	138.4	134.3	138.3
1989-90	133.4	151.6	117.8	129.3	127.5	133.0	156.9	128.6	122.3	141.5	131.2	146.2
1989-90—												
November	133.0	150.6	114.6	127.4	127.5	132.9	155.2	124.7	121.6	141.3	129.2	147.1
December	133.0	150.6	114.6	127.4	127.5	133.9	155.2	124.7	122.4	141.3	129.5	146.8
January	132.3	150.3	119.9	129.7	128.6	134.7	156.8	133.1	122.4	141.3	133.7	148.4
February	133.2	153.5	120.8	129.7	128.6	135.2	159.8	133.1	122.4	141.3	133.7	145.8
March	134.2	156.0	121.5	132.0	128.6	136.6	161.1	133.3	124.1	141.1	133.7	145.6
April	134.7	155.8	121.5	132.0	128.6	138.7	159.6	133.3	125.5	142.1	133.7	145.7
May	134.7	155.1	121.5	132.0	128.6	133.6	157.2	133.3	124.1	142.2	133.7	150.5
June	134.7	154.3	121.5	132.0	128.6	133.6	157.2	133.3	126.7	142.2	133.7	150.0
1990-91—												
July	134.7	155.9	127.1	132.0	128.6	140.6	156.3	133.3	126.7	142.2	133.7	150.2
August	135.2	156.7	127.0	130.0	132.1	141.2	154.5	134.6	126.7	142.8	133.7	149.9
September	135.2	156.2	128.2	130.7	133.0	141.8	154.5	135.1	126.7	142.8	148.1	153.3
October p	135.2	156.1	128.2	131.4	136.6	142.5	154.5	135.1	126.7	142.8	148.9	147.3
November p	135.2	156.1	128.2	131.3	136.6	142.5	157.2	136.4	132.0	142.8	148.9	155.0
December p	135.6	156.2	132.0	131.3	136.6	142.5	157.8	136.4	133.7	142.8	149.3	154.7
January p	133.6	156.8	132.0	131.3	136.6	142.5	157.8	136.4	133.7	142.8	149.3	154.7

TABLE 8. INDEX NUMBERS FOR SPECIAL COMBINATIONS OF BUILDING MATERIALS—CANBERRA
(Base of each index: Year 1986-87 = 100.0)

Value weight(a)	Electrical materials							Mechanical services components				Plumbing materials			
	All groups excluding electrical materials and mechanical services	Con- ductors 20.65%	Conduit and accessories 10.71%	Switch- boards and switch- gear 28.00%	Lamps and light fixtures 40.64%	All electrical materials 100.00%	All excluding lamps and light fixtures	Air con- ditioning 69.37%	Fire protection 12.15%	Elevators and escalators 18.48%	All mechanical services 100.00%	Hydraulic piping 60.61%	Drainage 12.06%	Roof and roof plumbing 27.53%	All plumbing materials 100.00%
1987-88	111.1	143.3	118.3	118.6	109.3	119.9	127.1	110.9	107.4	104.5	109.3	122.7	110.0	110.6	117.8
1988-89	121.6	187.2	142.1	127.5	121.5	139.0	150.9	117.9	108.4	118.2	118.2	137.9	122.6	121.6	131.6
1989-90	130.7	241.1	151.5	133.2	130.1	156.2	174.0	130.5	129.9	118.9	128.3	149.8	134.3	131.6	142.9
1989-90—															
November	129.3	237.8	150.1	132.2	129.4	154.8	172.1	130.0	128.7	118.7	127.7	149.6	132.6	131.3	142.5
December	128.4	237.8	150.4	133.1	129.4	155.1	172.6	130.0	129.4	119.4	127.9	149.8	132.6	131.3	142.6
January	131.2	237.8	150.9	133.6	129.4	155.3	173.0	130.2	129.0	119.6	128.2	150.6	134.4	132.1	143.5
February	131.9	240.9	151.5	133.6	129.4	156.0	174.2	131.2	129.8	120.2	129.0	151.4	134.4	132.3	144.1
March	132.9	262.3	154.5	133.6	129.6	160.8	182.1	132.0	133.3	131.4	130.2	152.7	137.6	132.3	145.2
April	133.9	272.2	154.9	134.4	132.6	164.3	186.0	132.3	134.1	133.8	131.0	152.7	137.6	132.3	145.3
May	133.8	272.6	154.4	134.4	132.7	164.4	186.1	133.0	133.8	121.2	130.9	151.7	137.6	133.5	145.0
June	133.7	272.5	154.4	135.2	132.7	164.6	186.4	133.8	133.8	120.8	131.4	151.5	137.6	133.5	144.9
1990-91—															
July	135.0	272.5	154.8	135.2	132.7	164.6	186.5	133.5	134.2	121.8	131.5	152.3	141.3	133.5	145.8
August	135.0	273.5	154.8	135.2	132.2	164.6	186.8	133.7	134.2	122.6	131.7	152.1	140.6	132.7	145.4
September	136.0	327.4	155.7	135.2	132.3	175.9	205.8	133.2	139.1	131.5	120.1	149.1	141.9	133.4	143.9
October p	136.2	328.3	155.7	135.3	132.4	176.2	206.1	133.5	139.2	120.2	133.1	147.5	142.1	135.7	143.6
November p	137.3	328.3	156.8	135.3	132.4	176.3	206.3	136.6	140.1	120.6	134.1	151.2	145.1	135.7	146.2
December p	138.4	331.9	156.2	135.1	131.0	176.3	207.4	138.6	140.2	120.7	135.5	157.0	145.1	136.9	150.0
January p	138.8	319.1	156.7	136.8	131.5	174.4	203.8	138.6	139.6	121.5	135.6	157.0	145.1	136.9	150.0

(a) Composition and weighting as at reference base year 1986-87: see paragraph 4 of Explanatory Notes.

EXPLANATORY NOTES

Introduction

This publication contains the Price Index of Materials Used in Building Other than House Building on reference base 1979-80 = 100.0 for the six State capital cities, 1981-82 = 100.0 for Darwin and 1986-87 = 100.0 for Canberra. The Appendix to the February 1981 issue of this publication contains a more detailed description of the index and its relationship with previous indexes. A detailed description of the previous index is contained in *Labour Report No. 58, 1973 (Ref. No. 6.7)*.

Scope and composition

2. The index measures changes in prices of selected materials used in the construction of buildings other than houses. It includes 68 items for the six State capital cities, 64 items for Darwin and 67 items for Canberra, which are combined into 10 industry of origin groups and an 'All groups' index. Table 1 presents 'All groups' index numbers for the weighted average of the six State capital cities and for each of the cities separately. Although many of the selected materials are also used in house building, in building repair, maintenance and alteration work, and in *engineering construction work* (e.g. projects such as roads, dams, bridges and the like), the weighting pattern of the index is not applicable to these other activities of the construction industry. In addition, since the weights are based on an average materials usage over a range of types of building within the defined area (building other than house building), the index is not necessarily applicable to any specific building or type of building.

Items and weights

3. The index is a fixed weights index. For the six State capital cities the items were selected and allocated weights in accordance with the estimated average values of materials used in the construction of buildings other than houses commenced in the six State capital cities in the three years ended June 1977. This same weighting pattern is used for each of the six capital cities. Copies of the weighting patterns for the 'All groups' index and the indexes in Table 6 of this publication are available from the ABS on request.

4. The weighting patterns for the Darwin and Canberra indexes are based on the same information used to construct the weighting patterns for the other capital cities, adjusted to account for differences in material usage and differences in price levels between Darwin, Canberra and the other cities. The list of selected items as well as the weights of the items for Darwin and Canberra are slightly different from those for the other capital cities. Copies of the weighting patterns for Darwin are available on request from the ABS. The weighting patterns for Canberra were shown in Appendix A of the November 1987 issue of this publication.

5. The weighting patterns referred to in paragraphs 3 and 4 are applied to local price measures for calculating index numbers for each capital city.

Classifications used

6. For the weighted average of the six State capital cities the selected materials have been combined into broad groups on an *industry of origin* basis. Table 3 presents index numbers for groups defined in terms of the Groups (3 digit-level) of the 1978 edition of the *Australian Standard Industrial Classification* (ASIC); the percentage contributions for individual materials and groups are shown in Table A1 of the Appendix to the February 1981 issue of this publication. The 'industry of origin' is not necessarily identical with the industry which supplies the materials to builders. The 'industry of origin' is the industry in which the material is *primarily produced*, determined in accordance with the classification rules of the ASIC. For instance, many of the materials are sold to builders by wholesalers, but the materials are classified to the appropriate producing industries, rather than the wholesale trading industries. Some materials used in constructing buildings in Australia are imported. Imported materials are allocated to the same industry of origin as Australian produced materials.

Prices

7. Prices are collected at the mid-point of the month to which the index refers, or the nearest trading day. They relate to specified standards of each material and are obtained from representative suppliers of materials used in building. In general the point of pricing is *delivered on site* but in some cases it has been necessary to use the nearest realistic price available, e.g. 'delivered to electrical contractor's store'. Local prices are used in the indexes for each capital city.

8. As far as possible, *actual transactions prices* are used in this index — that is the prices actually paid by building contractors or subcontractors to suppliers for materials delivered on building sites. The actual price paid for anything can, of course, be described in various ways. Instead of being described as a single price (as usually happens in retail shops) a price for a building material may be described in terms of the components that make up the price — for instance 'list price plus sales tax', 'suppliers price plus freight', 'basic price less (particular types of) discount' and so on. It is these *net* prices that buyers pay to sellers for materials that the ABS aims to use in compiling this price index.

9. The ABS asks respondent businesses to report details of the discounts they offer so that actual transactions prices can be calculated. However as building materials suppliers offer many different types of discounts to buyers (e.g. trade discounts, settlement discounts, quantity discounts, competitive discounts) the identification of the discounts and the way in which they are applied by sellers pose considerable problems for the ABS. To the extent that discounts are identified and measured their effects are taken into account in calculating the index. Sometimes new discounts, or changes in the way discounts are applied by sellers, are identified only after index numbers for a particular period have been published. In such cases, or in any other case where it is discovered that incorrect

prices have been used in compiling the indexes, revisions to index numbers will occur in subsequent issues of this publication.

10. To minimise the incidence of revisions, the ABS has stringent procedures to verify that prices reported in its mail collections are transactions prices net of discounts.

11. Sales taxes levied on building materials are included in the prices used to compile the index. Materials used in the construction of Commonwealth, State and Local Government owned buildings are exempt from sales tax; materials used in most non-government 'health' and 'education' buildings are also exempt. At any particular time when there is a change in the rate of sales tax on building materials, the movement in the index takes into account the proportion of materials sold subject to sales tax and the proportion of materials exempt from sales tax.

12. The Appendix to the September 1986 issue explains more fully the treatment of sales tax. The conversion factors published in Tables 1 and 2 of the Appendix allow users, if they wish to do so, to convert published index numbers for September 1986 and subsequent months to either include the full effects of sales tax changes or exclude entirely the effects of sales tax changes. Conversion factors for the period September 1981 to August 1982, September 1982 to August 1983, September 1983 to September 1985, and October 1985 to August 1986 are available from the ABS on request.

13. The Appendix to the February 1981 issue of this publication contains a detailed explanation of the measurement of price change for materials supplied to individual order.

Index numbers for selected materials.

14. Table 4 contains index numbers for selected materials used in constructing buildings other than houses for the weighted average of the six State capital cities. In general these indexes relate to either single items or combinations of items as shown in the weighting pattern published in Table A1 of the Appendix to the February 1981 issue of this publication. Table 5 contains index numbers for selected major materials for each State capital city separately. Table 7 contains corresponding index numbers for Canberra.

Index numbers for special combinations of materials

15. Table 6 contains index numbers for the following special combinations of materials, for each State capital city and the weighted average of the six State capital cities.

- All groups excluding electrical materials and mechanical services components'. This index series is a continuation of the series described as the 'Special purpose' index in publications prior to the February 1981 issue.
- 'Electrical materials'. This index series is a continuation of the 'Electrical installation materials' series previously released in the publication *Price*

Index of Electrical Installation Materials (6409.0) discontinued in February 1981.

- 'Mechanical services components'.
- 'Plumbing materials'.

Table 8 contains corresponding index numbers for Canberra.

Interpretation and analysis

16. Care should be exercised when interpreting month-to-month movements in the indexes as short term movements do not necessarily indicate a change in trend.

17. The separate city indexes measure price movements over time in each capital city individually. They do not measure differences in price levels between cities.

18. Index numbers for financial years are simple averages of monthly index numbers. All index numbers for the current month and the three previous months are preliminary and subject to revision. However, it may be necessary from time to time to revise index numbers for earlier periods if incorrect prices for those periods are detected or if the sample of prices used to compile the indexes is found to be unsatisfactory.

19. Movements in indexes from one period to another can be expressed as changes in 'index points' or as percentage changes. The following example illustrates the method of calculating index points changes and percentage changes between any two periods.

Weighted average of six State capital cities—	
All groups index number — January 1991:	245.1
less All groups index number — December 1990:	244.0
Change in index points:	+1.1
Percentage change	$= \frac{+1.1}{244.0} \times 100 = +0.5$

20. Table 1 includes percentage changes to indicate the following movements in index numbers:

- movements between consecutive financial years
- movements between corresponding months of consecutive years
- movements between consecutive months.

21. Table 2 provides an analysis of the contributions made by selected major building materials to the monthly change in the All groups index for each city separately and for the weighted average of the six State capital cities. These contributions are expressed in terms of All groups index points. The table shows for example, that in January 1991 the All groups index for the weighted average of the six State capital cities increased by 1.1 index points, of which +0.02 index points were contributed by structural timber. Similarly, the table shows that the All groups index for Sydney increased by 0.8 index points, of which +0.05 index points were contributed by structural timber.

Related publications

22. Users may also wish to refer to the following price index publications which are available on request:

Price Index of Materials Used in House Building, Six State Capital Cities and Canberra (6408.0) — issued monthly

Price Indexes of Materials Used in Manufacturing Industries, Australia (6411.0) — issued monthly

Price Indexes of Articles Produced by Manufacturing Industry, Australia (6412.0) — issued monthly

Price Indexes of Copper Materials, Australia (6410.0) — issued monthly

23. Other ABS publications which may be of interest include:

Award Rates of Pay Indexes, Australia (6312.0) — issued monthly

Average Weekly Earnings, States and Australia (6302.0) — issued quarterly

24. Current publications produced by the ABS are listed in the *Catalogue of Publications and Products, Australia* (1101.0). The ABS also issues, on Tuesdays and Fridays, a *Publications Advice* (1105.0) which lists publications to be released in the next few days. The Catalogue and Publications Advice are available from any ABS office.

Unpublished statistics

25. As well as the statistics included in this and related publications, the ABS may have other relevant unpublished data available. Inquiries should be made to the contact in the Phone Inquiries box at the front of this publication.

Symbols and other usages

- nil, or rounded to zero
- n.a. not available
- p preliminary—figures subject to revision
- r figures revised since previous issue

IAN CASTLES
Australian Statistician



For more information ...

The ABS publishes a wide range of information on Australia's economic and social conditions. A catalogue of publications and products is available from any of our Offices (see below for contact details).

Information Consultancy Service

Special tables or in-depth data investigations are provided by the ABS Information Consultancy Service in each of our Offices (see below for contact details).

Electronic Data Services

A growing range of our data are available on electronic media. Selections of the most frequently requested data are available, updated daily, on DISCOVERY (Key *656#). Our TELESTATS service delivers major economic indicator publications ready to download into your computer on the day of release. Our AUSSTATS service enables on-line access to a data base of thousands of up-to-date time series. Selected datasets are also available on diskette or CD-ROM. For more details on our electronic data services, contact Information Services in any of our Offices or the numbers below.

Bookshops and Subscriptions

There are over 500 titles available from the ABS Bookshops in each of our Offices. You can also receive any of our publications on a regular basis. Join our subscription mailing service and have your publications mailed to you in Australia at no additional cost. Telephone our Publications Subscription Service toll free on 008 02 06 08 Australia wide.

Sales and Inquiries



SYDNEY (02) 268 4611
MELBOURNE (03) 615 7000
BRISBANE (07) 222 6351
PERTH (09) 323 5140

ADELAIDE (08) 237 7100
HOBART (002) 20 5800
DARWIN (089) 81 3456
CANBERRA (06) 252 6627



Information Services, ABS, PO Box 10, Belconnen ACT 2616
or any ABS State office.

