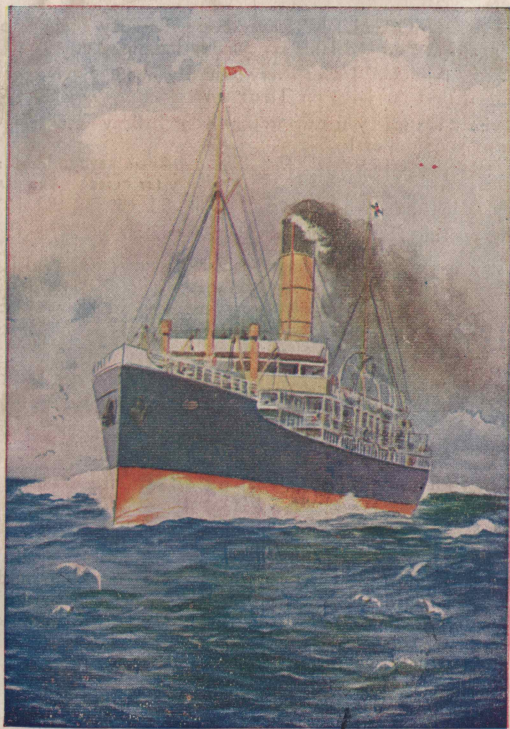


About "The Gulf and  
West Coast  
Trips" 



THE ADELAIDE STEAMSHIP COY.,  
LIMITED.

# PROBABLY YOU WANT A CHANGE OF AIR AND SCENE

and cannot spare the time for a lengthy holiday—if so, why not take a sea trip, either “The Gulf Trips,” “West Coast Trip,” or to Port Lincoln only.

As regards The Gulf Trips and Port Lincoln, the following will interest you.

The S.S. “MORIALTA” leaves every Tuesday about 4 p.m. arriving again at Port Adelaide on Sunday morning or

S.S. “PARINGA” leaves every Saturday about 4 p.m., arriving again at Port Adelaide on Thursdays.

By either steamer you can arrange your holiday according to the time at your disposal.

#### RETURN FARES:

	1ST CLASS	2ND CLASS
1. By taking the Round Trip	£3 15 0	£2 15 0
2. By booking for Port Lincoln only	2 2 0	1 15 0

with a stay there until “Morialta” calls again enroute for Adelaide. Or if time presses, and a sea trip only is required, it is possible to leave Adelaide per “Morialta” on Tuesday, arrive at Lincoln Wednesday a.m., and leave again (circumstances permitting) for Adelaide per “Paringa” the same night.

THIS MEANS YOU ARE ONLY AWAY FROM BUSINESS ONE DAY (WEDNESDAY) WHICH YOU SPEND AT PORT LINCOLN AND HAVE A SPLENDID SEA TRIP.

FARES INCLUDE EVERYTHING EXCEPT WINES AND SPIRITS.

The service is maintained by the New Steamers “Morialta” 1,847 tons, and “Paringa,” 1,310 tons, vessels of the most modern type, and fitted with all the latest improvements luxuriously appointed, Hot and Cold Sea Water Baths, Electric Light and Cooling Fans, Dining Saloon on Deck, Smoking Room &c. &c.

All information, dates, and fares subject to alteration and revision without notice.

ALL RETURN TICKETS AVAILABLE FOR SIX MONTHS FROM DATE OF ISSUE.

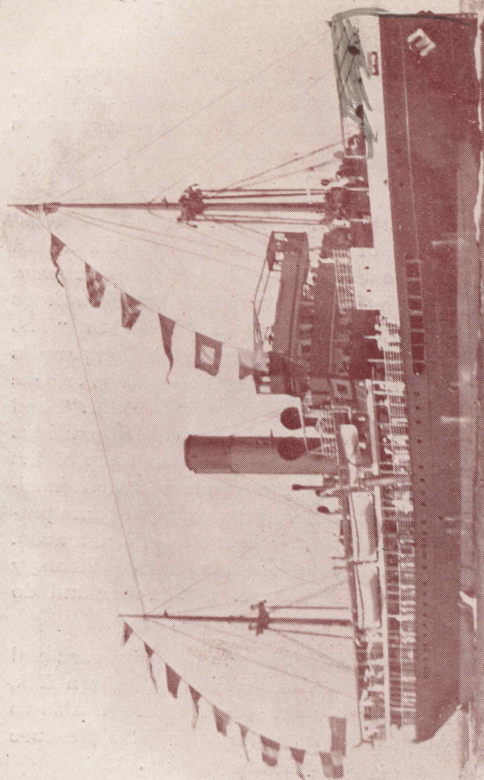
THE  
Gulf Trip

**I**T is curious how comparatively few persons appreciate the beauties of the country in which they reside, and in the matter of holiday attractions always deem it necessary to go far afield.

In South Australia, for instance, one often hears the beauty of Tasmania or New South Wales rivers extolled, yet how few of those who talk in this strain know anything of the attractions of that fine waterway, Spencer's Gulf. What better holiday, it may well be asked, can be wanted than what is known as "The Gulf Trip," which the Adelaide Steamship Company is doing so much to popularise. In the splendid up-to-date steamers now available, such as the "Morialta" and "Paringa," passengers may make the trip in luxurious fashion. The menu provided is equal to that of the mail steamers or best hotels, the accommodation excellent, and the stoppage at the various ports en route precludes any possibility of the trip becoming monotonous. The fact of comparatively smooth water strongly appeals to those who suffer from mal-de-mer and do not care for a voyage on the open seas.

Many hundreds have taken the trip with pleasure and profit; not only city residents, but also northern folk, who from Port Augusta, Port Pirie, &c., are able to journey south with a degree of comfort and pleasure quite impossible on a long railway journey.

Taken altogether, "The Gulf Trip" may be summed up as health-giving, pleasurable, and educational, and a unique opportunity for the man of business or country pursuits, who is feeling run down from over attention to his business, to recuperate in a pleasurable manner.



S.S. "MORIALTA,"  
1,847 TONS.

## Approximate Time Table.

The dates throughout the various services will be adhered to as closely as possible, but should circumstances necessitate any alteration, the Company may despatch steamers in advance of or later than the dates given, or withdraw any steamer altogether, and is not responsible for any loss or inconvenience occasioned thereby.

### S.S. "MORIALTA."

L.—Port Adelaide ..	Tuesday ..	4 p.m.
A.—Port Lincoln ..	Wednesday ..	7 to 8 a.m.
L.—Port Lincoln ..	Wednesday ..	Noon
A.—Tumby Bay ..	Wednesday ..	3 p.m.
L.—Tumby Bay ..	Wednesday ..	6 p.m.
A. & L.—Arno Bay ..	Wednesday ..	Night
A.—Walleroo ..	Thursday ..	To catch first train to Adelaide.
L.—Walleroo ..	Thursday ..	Noon*
A.—Cowell ..	Thursday ..	Before Dark
L.—Cowell ..	Friday ..	Early a.m.
A.—Walleroo ..	Friday ..	A.M.
L.—Walleroo ..	Friday ..	5 p.m.
A. & L.—Arno Bay ..	Friday ..	Night
A. & L.—Tumby Bay ..	Saturday ..	A.M.
A.—Port Lincoln ..	Saturday ..	1 p.m.
L.—Port Lincoln ..	Saturday ..	P.M.
A.—Port Adelaide ..	Sunday ..	Morning'

\*Later in Summer months.

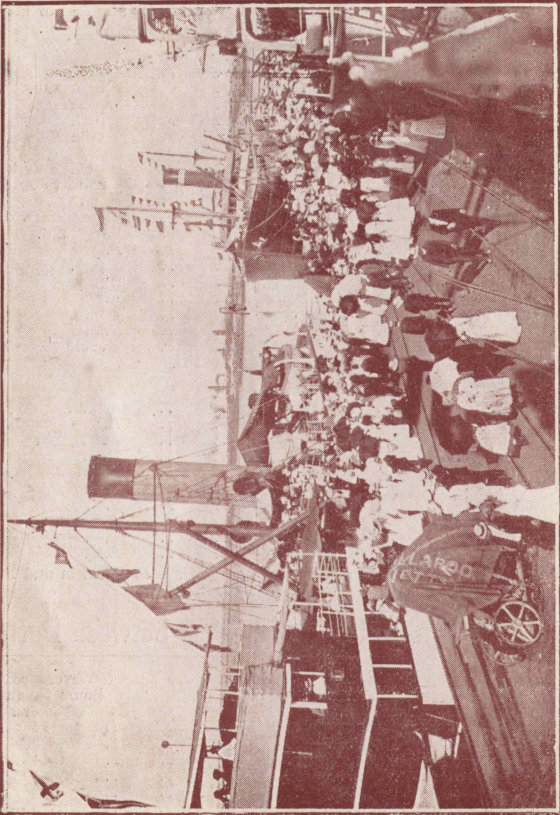
### S.S. "PARINGA."

L.—Port Adelaide ..	Saturday ..	4 p.m.
A. & L.—Port Lincoln ..	Sunday ..	A.M.
A.—Port Augusta ..	Monday ..	A.M.
L.—Port Augusta ..	Monday ..	P.M.
A. & L.—Port Germein ..	Monday ..	Night
A.—Port Pirie ..	Tuesday ..	A.M.
L.—Port Pirie ..	Tuesday ..	P.M.
A.—Port Lincoln ..	Wednesday ..	A.M.
L.—Port Lincoln ..	Wednesday ..	P.M.
A.—Port Adelaide ..	Thursday ..	A.M.

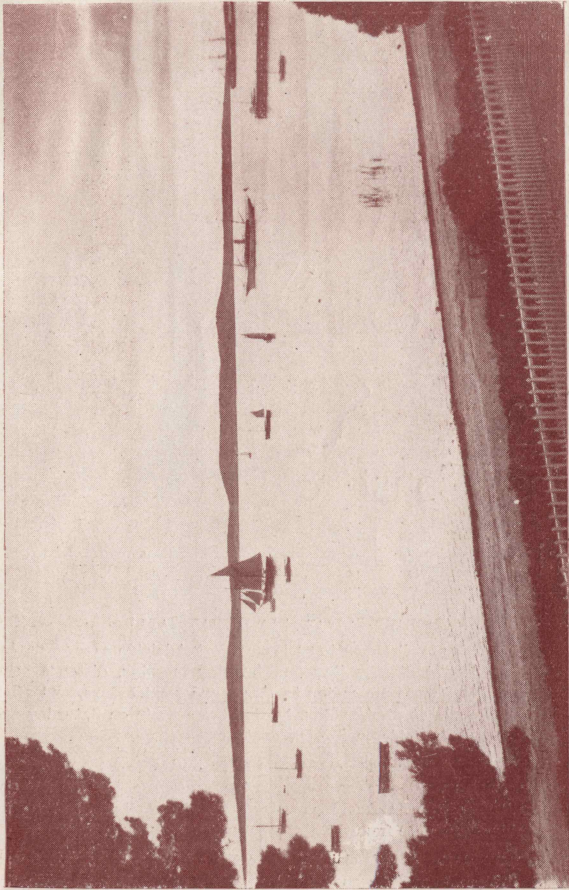
During Wool Season (September-December) proceeds to Germein and Pirie before Augusta.

## Approximate Mileage and Time between Ports :

	No. of Miles.	Average No. hours taken by steamers.
Port Adelaide—Port Lincoln ..	170	14
Port Lincoln—Tumby Bay ..	30	3
Tumby Bay—Arno Bay ..	41	4
Arno Bay—Walleroo ..	55	5
Walleroo—Cowell ..	42	4
Walleroo—Port Germein ..	64	5½
Walleroo—Port Pirie ..	74	6½
Port Germein—Port Pirie ..	10	1
Port Pirie—Port Augusta ..	55	5
Walleroo—Port Augusta ..	95	8½
Port Lincoln—Port Pirie ..	162	14



ON THE JETTY, WALLAROO.



THE HARBOUR, PORT LINCOLN



# The West Coast Trip.

(STREAKY, MURAT, AND DENIAL BAYS.)

The s.s. "Rupara" (1,370 tons) leaves Port Adelaide every Tuesday evening, arriving at Streaky Bay on Thursday morning, distance being about 335 miles, thence proceeding to Murat and Denial Bays, and afterwards calling again at Streaky Bay, leaving there again on Saturday and arriving at Port Adelaide on Sunday evenings.

To the tourist travelling for pleasure or to business men and workers generally seeking a rest cure for overwork, the comforts of the fine steamer "Rupara," with her hot and cold sea water baths, electric light, and cooling fans, combined with the fresh sea air, offer special inducements.

STREAKY BAY, which is claimed to be the capital of the West Coast, is an ideal place to spend a good holiday by the sea. It has a splendid back beach where surf bathing can be enjoyed. The climate is ideal, extremes in temperature in winter and summer being unknown.

The Bay is a good expanse of water, and abounds with schnapper, whiting, &c. It is also admirably adapted for motor-boating, rowing, yachting, &c. When tides permit, oystering forms a pleasant pastime.

The town has three churches, a State school, two fine hotels, three large stores, and all other trades are well represented. There is a small golf course, and also a tennis court in the park lands.

Amongst places of interest in the neighbourhood are Point Westall, Cathedral Rock (at both these places magnificent views of spray rising to heights of 30 and 40 feet over picturesque rocks may be had) and Whistling Hill, where the inrush of water forms a blow-hole which causes sounds similar to a whistle to be emitted. There are a number of caves also to be explored. Motor vehicles can be obtained as well as motor boats.

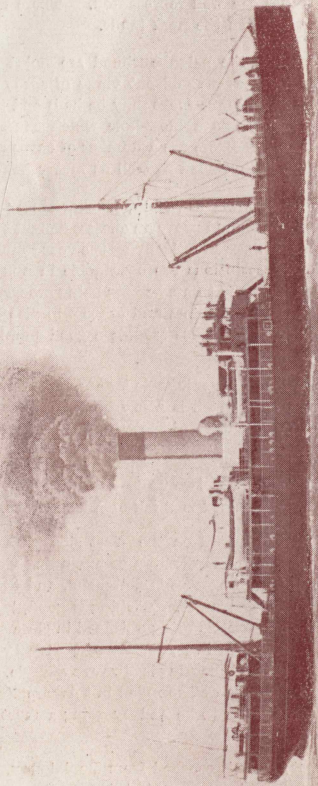
MURAT BAY, though only a small township, is charmingly situated, overlooking a beautiful bay, which should prove an endless delight to tourists who are fond of fishing and yachting. Practically all the year round smooth water prevails, and fish of all descriptions are obtainable in abundance—large quantities of trevalle, whiting, and tommy-rough being procurable from the jetty with lines. Those fond of oysters and crabs will also find that they are well catered for, as with very little trouble a good supply can be obtained.

With a yacht a party can secure an enjoyable two or three days' outing by proceeding to Davenport Creek, which is a few hours' sail from Murat Bay, fishing and shooting being a feature of the trip. Pelicans and seals are to be seen on the way.

The town itself contains a fine hotel, two up-to-date stores, an Anglican and Methodist Church, and a Branch of the Bank of Adelaide, &c.

DENIAL BAY.—This port is situated on the West side of Murat Bay proper, and from the newly surveyed township a commanding view of the whole of the Bay is obtained. The climate is delightful, and the district is one in which a holiday can be well spent. Fishing is good, large hauls of schnapper, whiting, and other varieties being obtained in close proximity to the jetty. Jetty fishing is indulged in very largely by the local residents: wild duck abounds in season, and good shooting is always available. Rabbits are too plentiful, and the sportsman is well supplied in this direction. Wild turkey, wallaby, and other shooting is to be had by going a short distance inland.

The renowned Davenport Creek is reached from Denial Bay, and conveyances can be secured to take holiday-makers to this favorite resort, where excellent views may be seen and splendid fishing indulged in. Situated about 18 miles inland from Denial Bay is the well-known Lutheran Mission Station for blacks, which is well worth inspecting, the drive to this station allowing visitors to see some of the finest agricultural land in the State.



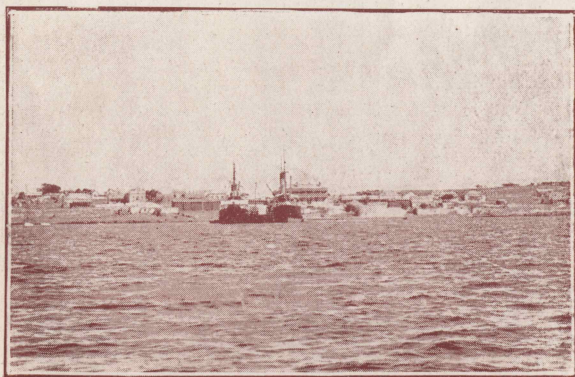
SS "RUPARA," 1,368 TONS.

# APPROXIMATE TIME TABLE.

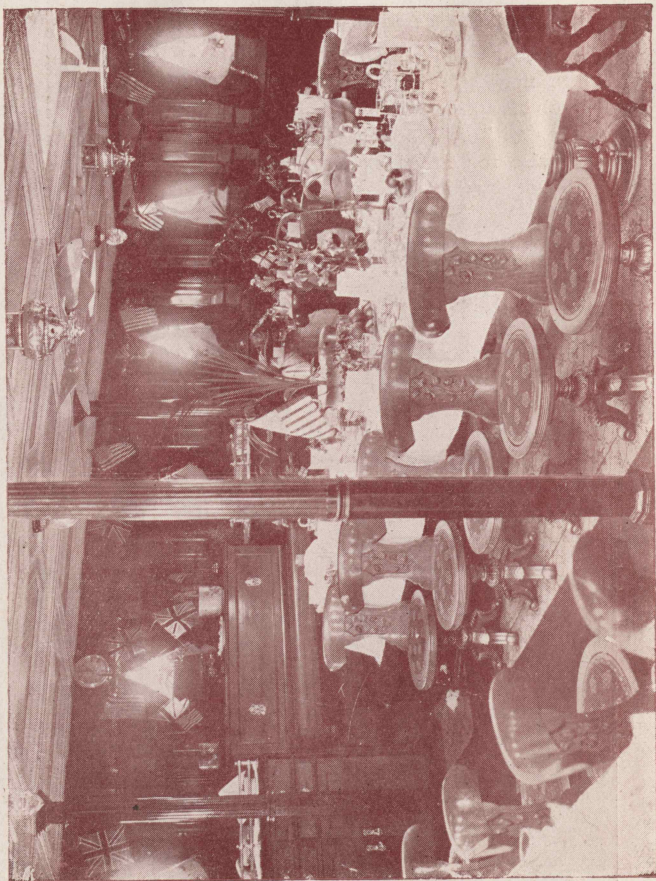
The dates throughout the various services will be adhered to as closely as possible, but should circumstances necessitate any alteration the Company may despatch steamers in advance of or later than the dates given, or withdraw any steamer altogether, and is not responsible for any loss or inconvenience occasioned thereby.

## S.S. "RUPARA."

L.—Port Adelaide	..	..	Tuesday	..	p.m.
A.—Streaky Bay	..	..	Thursday	..	a.m.
L.—	"	..	Thursday	..	a.m.
A.—Murat and Denial Bays			Thursday	..	p.m.
L.—	"	"	Friday	..	a.m.
A.—Streaky Bay	..	..	Friday	..	p.m.
L.—	"	..	Saturday	..	p.m.
A.—Port Adelaide	..	..	Sunday	..	p.m.



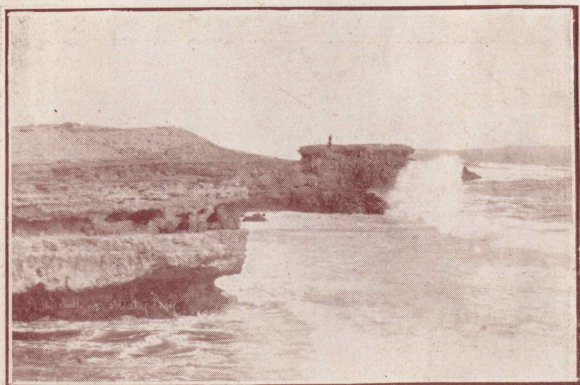
STREAKY BAY.



ONE OF THE FIVE SALOON TABLES



STREAKY BAY JETTY.



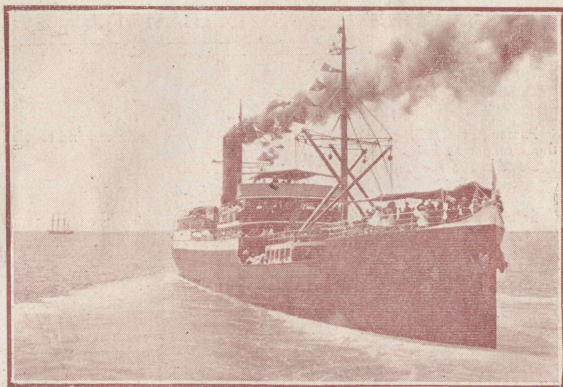
POINT WESTALL, NEAR STREAKY BAY.



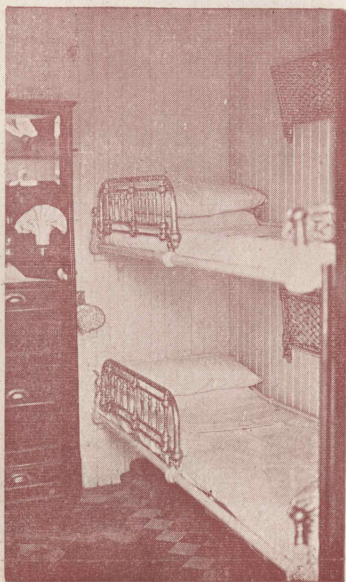
BACK BEACH, STREAKY BAY.



THE WEST COAST NATIVES.



S.S. "PARINGA," 1,310 TONS.



A  
TWO-BERTH  
CABIN.

# General Information.

---



## CONDITIONS AND REGULATIONS.

Passengers should make themselves acquainted with conditions and regulations on the Company's Passage ticket.

Deck chairs received on board at Passengers' risk.

## BREAKING JOURNEY.

Saloon passengers can break journey at any port en route, but must complete the voyage covered by the ticket within six months of embarkation.

Passengers are respectfully requested to notify when booking should they desire to break journey at any port.

## HOW TO BOOK.

If unable to call, write and enclose the full fare or half of it as a deposit. This secures Berths, and you can pay the balance at any time before embarkation.

Passengers desirous of securing accommodation should when writing state clearly the date on which they propose sailing, the class of accommodation required—in the case of a party, the sex and relationship of each person (and also the ages in the case of children)—and whether upper or lower berths are preferred.

## ENGAGEMENT OF BERTH.

A berth will not be considered to be engaged until half of the passage money has been paid, the balance to be paid before embarkation.

## LUGGAGE.

Saloon Passengers will be allowed 20 cubic feet each adult, 2nd Class, 10 feet. Children paying half fare, half these measurements. Every package must have Passengers' name and destination distinctly marked on it. Only the personal Baggage of the Passenger will be carried as luggage. Merchandise cannot be shipped as Luggage.

Special Labels are issued gratis by the Company to ensure passengers' Luggage reaching proper destination, and same can be obtained on application at the Company's Offices.

Boxes for the cabin should not exceed 2 ft. 8 in. x 1 ft. 6 in. x 1 ft. 2 in. One package of this size can be taken in the cabin by each adult passenger, but will be reckoned in the allowance.

The ship is not responsible for loss, damage, or detention of luggage under any circumstances.

Baggage not claimed is deposited with the Branches, Agencies, or Custom Houses at the owner's risk and expense.

## CAUTION—GOODS OF DANGEROUS NATURE.

Passengers must not take on board any goods of a dangerous nature. Any person so doing will not only be liable to the penalties imposed by the Statute but also for all damage sustained in consequence of such shipment.

Dogs, cats, pet birds, and other small domestic animals will be carried on deck at owner's risk. They must be kept in cages or dog kennels; the cages kennels, and food to be provided by owners themselves, unless specially arranged otherwise. The rate of charges for them varies according to sizes.

Passengers taking Return Ticket to Adelaide must re-book Berths at Adelaide or Port Adelaide for Return Journey.

Children under 12 years must be accompanied by a Guardian.