



AUSTRALIAN BUREAU OF STATISTICS

Canberra



CATALOGUE NO. 6302.0

EMBARGOED UNTIL 11.30 A.M. 15 SEPTEMBER 1988

AVERAGE WEEKLY EARNINGS, STATES AND AUSTRALIA, MAY 1988

- PHONE INQUIRIES** • about these statistics and other ABS services—contact Information Services on Canberra (062) 52 6007, 52 6627, 52 5402 or any ABS State office.
- MAIL INQUIRIES** • write to Information Services, ABS, P.O. Box 10, Belconnen, A.C.T. 2616 or any ABS State office.
- ELECTRONIC SERVICES** • on VIATEL — key *656#. • on AUSSTATS — phone (062) 52 6017. • on TELESTATS — phone (062) 52 5404.

MAIN FEATURES

Estimates of average weekly earnings for May 1988 and the respective changes are shown below:

Full-time adult average weekly ordinary time earnings

	Change (%)		
	Feb. 1988 to May 1988	May 1987 to May 1988	
Males	491.40	+1.2	+6.5
Females	409.20	+1.7	+6.8
Persons	464.80	+1.3	+6.5

Full-time adult average weekly total earnings

	Change (%)		
	Feb. 1988 to May 1988	May 1987 to May 1988	
Males	532.40	+1.9	+7.0
Females	419.50	+1.8	+6.7
Persons	495.80	+1.8	+6.9

All employees average weekly total earnings

	Change (%)		
	Feb. 1988 to May 1988	May 1987 to May 1988	
Males	481.70	+1.4	+6.8
Females	316.40	+0.3	+5.8
Persons	411.90	+0.8	+6.3

Notes on the estimates

The movements of employee earnings at the national level between February 1988 and May 1988 are statistically significant, with the exception of average weekly total earnings for all females and all persons. Movements of employee earnings over the period are also statistically significant for all categories for public sector employees.

Average weekly earnings for May 1988 were influenced by:

- continued flow through of the March 1987 National Wage Case second tier increases. Supplementary information obtained during the survey (which should be regarded as indicative only, as not all survey respondents provided information about second tier payments), suggests that approximately 65 per cent of full-time adult employees had received the increase by the survey reference date. By comparison about 50 per cent of full-time adult employees had received second tier increases by the February 1988 reference date. A higher proportion of female than male

employees received second tier increases during the three months to May 1988, and second tier increases were received by 10 per cent of private and 25 per cent of public sector employees during the same period.

- the \$6 per week National Wage Case decision, awarded in February 1988. As this decision was for a flat increase, the increase for lower paid employees was proportionally more than for higher paid employees.

The States that had statistically significant movements for full-time adult ordinary time earnings were New South Wales (1.7 per cent), South Australia (1.7 per cent), Tasmania (1.5 per cent) and the Australian Capital Territory (1.4 per cent).

There are many factors which may give rise to increases in estimates of average weekly earnings (see paragraph 17 of the Explanatory Notes), although the major influences are increases to award rates of pay as a result of National Wage Case decisions. The following National Wage Case decisions have been handed down since November 1985:

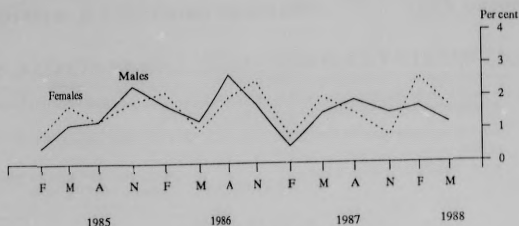
- 3.8 per cent increase, effective November 1985
- 2.3 per cent increase, effective July 1986
- \$10 per week (first tier) increase, effective March 1987
- second tier increase of up to 4 per cent, subject to terms specified in the National Wage Case decision, March 1987
- \$6 per week increase, awarded February 1988.

In the twelve months since the May 1987 reference period:

- average weekly ordinary time earnings of full-time adults have increased by 6.5 per cent
- the increase in ordinary time earnings of full-time adults was highest in New South Wales (7.4 per cent) and South Australia (7.2 per cent)
- ordinary time earnings of full-time adult males have increased at a slower rate (6.5 per cent) than of full-time adult females (6.8 per cent)
- ordinary time earnings of full-time adults in the private sector have increased at a faster rate (6.8 per cent) than of full-time adult employees in the public sector (6.3 per cent).

Average weekly earnings may be affected significantly in some periods by changes in the composition of the employed labour force (see paragraph 13 of the Explanatory Notes).

FULL-TIME ADULT AVERAGE WEEKLY ORDINARY TIME EARNINGS
AUSTRALIA
QUARTERLY PERCENTAGE CHANGE, FEBRUARY 1985 TO MAY 1988



EXPLANATORY NOTES

Introduction

This publication contains estimates of average weekly earnings for May 1988 based on information obtained from a sample survey of employers.

2. Background information about the average weekly earnings series is provided in *Information Paper: New Statistical Series: Employment, Average Weekly Earnings, Job Vacancies and Overtime* (6256.0) published on 21 June 1984, copies of which are available on request.

3. Preliminary estimates of average weekly earnings, Australia for May 1988 were published on 19 August 1988 in *Average Weekly Earnings, Australia, May 1988, Preliminary* (6301.0).

Scope of the survey

4. All wage and salary earners who received pay for the reference period are represented in the survey, except:

- members of the Australian permanent defence forces;
- employees of enterprises primarily engaged in agriculture, forestry, fishing and hunting;
- employees in private households employing staff;
- employees of overseas embassies, consulates, etc.;
- employees based outside Australia; and
- employees on workers' compensation who are not paid through the payroll.

5. Also excluded are the following persons who are not regarded as employees for the purposes of this survey:

- directors who are not paid a salary;
- proprietors/partners of unincorporated businesses; and
- self-employed persons such as subcontractors, owner/drivers, consultants and persons paid solely by commission without a retainer.

Survey design

6. A sample of approximately 4,000 employers is selected from the ABS register of businesses to ensure adequate State and industry representation. The sample is updated each quarter to take account of new businesses, those which have ceased operation and structural changes such as takeovers and mergers. The statistical unit for the survey comprises all activities of an enterprise in a particular State or Territory. Each statistical unit is classified to an industry which reflects the predominant activity of the enterprise in the State or Territory. In a small number of cases where an enterprise has significant employment in more than one industry, a separate statistical unit is created for each industry. The statistical units are stratified by State, public/private, industry and size of employment and an equal probability sample is selected from each stratum.

Definitions

7. *Reference period* for the survey refers to the last pay period ending on or before the third Friday of the middle month of the quarter. The reference date for the current survey is 20 May 1988.

8. *Employees* refers to all wage and salary earners (as defined in paragraph 4) who received pay for any part of the reference period.

9. *Full-time employees* are permanent, temporary and casual employees who normally work the agreed or award hours for a full-time employee in their occupation and received pay for any part of the reference period; if agreed or award hours do not apply, employees are regarded as full-time if they ordinarily work 35 hours or more per week.

10. *Adult employees* are those employees 21 years of age or over and those employees who, although under 21 years of age, are paid at the full adult rate for their occupation.

11. *Weekly ordinary time earnings* refers to one week's earnings of employees for the reference period attributable to award, standard or agreed hours of work. It is calculated before taxation and any other deductions (e.g. superannuation, board and lodging) have been made.

Included in ordinary time earnings are award payments, overaward payments, penalty payments, shift and other allowances; commissions and retainers; bonuses and similar payments related to the reference period; payments under incentive or piecework; payments under profit-sharing schemes normally paid each pay period; payments for leave taken during the reference period; all workers' compensation payments made through the payroll; and salary payments made to directors. Excluded are overtime payments, retrospective pay, pay in advance, leave loadings, severance, termination and redundancy payments and other payments not related to the reference period.

12. *Weekly total earnings* of employees is equal to weekly ordinary time earnings plus weekly overtime earnings.

13. *Average weekly earnings* statistics represent average gross (before tax) earnings of employees and do not relate to average award rates nor to the earnings of the 'average person'. Estimates of average weekly earnings are derived by dividing estimates of weekly total earnings by estimates of employment. Changes in the averages may be affected not only by changes in the level of earnings of employees but also by changes in the overall composition of the labour force. There are several aspects which can contribute to compositional changes such as variations in the proportions of part-time, casual and junior employees, variations in the occupational distribution within and across industries and variations in the distribution of employment between industries.

14. *Sector*. Public sector includes local government authorities and all government departments, agencies and authorities created by, or reporting to the Commonwealth and State Parliaments. All remaining employees are classified as private sector.

Industry classification

15. Since 1981 additional data items have been collected in the survey each November, with the resulting average weekly earnings estimates published in *Average Earnings and Hours of Employees, Australia* (6304.0). The November issue *Average Weekly Earnings of, States and Australia* (6302.0), includes estimates of average weekly earnings for full-time adult employees classified by industry (see Table 4). These estimates should be considered to be preliminary and may be subject to minor revisions in *Average Earnings and Hours of Employees, Australia* (6304.0), which will be published later this year.

16. Industry is classified according to the *Australian Standard Industrial Classification (ASIC) 1983 Edition, Volume 1 - The Classification* (1201.0). The table in the Appendix shows the ASIC subdivisions used in the survey.

Comparability of results

17. When comparisons are made between period to period movements in average weekly ordinary time earnings (AWOTE) for full-time adults and movements in the Award Rates of Pay Indexes (ARPI) it is important to recognise the different coverage, scope, definitions and methodology used in the construction of each series. In particular, the AWOTE series includes a number of payments additional to award rates of pay used in compiling ARPI. Allowances covered under awards

which are not industry or occupation wide in their application such as site, travelling, height and dirt allowances are excluded from ARPI but included in AWOTE. The AWOTE series also includes other payments, such as shift penalty payments and overaward pay. A significant number of employees are not covered by awards but are included in AWOTE. The AWOTE series is affected by compositional change in the labour force. However ARPI is not, because it is a fixed-weight index constructed from a representative 'basket' of occupations selected from the May 1985 Survey of Employee Earnings and Hours and subject to reselection and re-basing at infrequent intervals. Other factors affecting comparisons of the two series include seasonal influences on earnings and differences between the two series in the treatment of retrospective pay increases. A detailed description of the methodology, scope and definitions used in ARPI is published in *Award Rates of Pay Indexes, Australia* (6312.0).

18. It is also important to recognise that whilst average employee earnings can be derived from the Survey of Employment and Earnings (SEE) published in *Employed Wage and Salary Earners, Australia* (6248.0), these average earnings will not be comparable with those produced from the Survey of Average Weekly Earnings (AWE). In the AWE survey, information is obtained relating to a specified pay period, the last pay period ending on or before the third Friday of the middle month of the calendar quarter. The SEE collects the sum of employee earnings paid in all pay periods ending in a calendar quarter including payments to employees which are excluded from the scope of the AWE survey such as retrospective pay, pay in advance, leave loadings and severance, termination and redundancy payments. Whilst the quarterly earnings produced by SEE are affected by the varying number of pay periods from quarter to quarter the AWE results are unaffected because of the selection of a specified pay period in the middle of a quarter. The SEE earnings data are also more subject to seasonal variations, particularly in the December and March quarters, due to the incidence of holidays taken in January being paid in advance and the earnings being reported in December quarter figures.

Historical series

19. The series was introduced in August 1981 when it replaced the average weekly earnings series based principally on information from payroll tax returns. Revised estimates of average weekly earnings for the period August 1981 to November 1983 were included in *Average Weekly Earnings, States and Australia, March Quarter 1984* (6302.0) published on 12 July 1984. Users who need a measure of the movement in earnings for a period which spans both the payroll tax based and employer survey series should refer to Table 3 in that publication which presents both series linked to a common index base (August 1981 = 100).

Reliability of estimates

20. As the estimates in this publication are based on information relating to a sample of employers rather than a full enumeration, they are subject to sampling variability. That is, they may differ from the figures that would have been produced if the information had been obtained from all employers. This difference, called *sampling error*,

should not be confused with inaccuracy that may occur because of imperfections in reporting by respondents or in processing by the ABS. Such inaccuracy is referred to as *non-sampling error* and may occur in any enumeration whether it be a full count or sample. Efforts have been made to reduce non-sampling error by careful design of questionnaires, detailed checking of returns and quality control of processing.

21. The sampling error associated with any estimate can be estimated from the sample results. One measure of sampling error is given by the *standard error* which indicates the degree to which an estimate may vary from the value that would have been obtained from a full enumeration (the 'true' figure). There are about two chances in three that a sample estimate differs from the true value by less than one standard error, and about nineteen chances in twenty that the difference will be less than two standard errors.

22. An example of the use of a standard error is as follows. If the estimated average earnings was \$380.00 with a standard error of \$2.00, then there would be about two chances in three that a full enumeration would have given an estimate in the range \$378.00 to \$382.00 and about nineteen chances in twenty that it would be in the range \$376.00 to \$384.00.

23. An example of the use of a standard error for a quarterly change estimate is as follows. If the estimated standard error for a quarterly change estimate of average weekly earnings was \$1.00 and the quarterly change estimate between two quarters was \$1.50, then there would be about two chances in three that a full enumeration would have given a quarterly change estimate in the range +\$0.50 to +\$2.50 and about nineteen chances in twenty that it would be in the range -\$0.50 to +\$3.50.

Related publications

24. Users may also wish to refer to the following publications which are available on request:

Information Paper: New Statistical Series: Employment, Average Weekly Earnings, Job Vacancies and Overtime (6256.0)

Average Earnings and Hours of Employees, Australia (6304.0)—issued annually

Distribution and Composition of Employee Earnings and Hours, Australia (6306.0)—issued annually

Job Vacancies, Australia (6231.0)—issued quarterly

Overtime, Australia (6330.0)—issued quarterly

Employed Wage and Salary Earners, Australia (6248.0)—issued quarterly

Award Rates of Pay Indexes, Australia (6312.0)—issued monthly

The Labour Force, Australia (6203.0)—issued monthly

Occasional Paper No. 1986/1: Statistics on Wages, Earnings, Income and Labour Costs — A Guide to Their Concepts, Measurement and Usage.

25. Current publications produced by the ABS are listed in the *Catalogue of Publications, Australia* (1101.0). The ABS also issues, on Tuesdays and Fridays, a *Publications Advice* (1105.0) which lists publications to be released in the next few days. The *Catalogue* and *Publications Advice* are available from any ABS office.

Unpublished statistics

26. In some cases, the ABS can also make available information which is not published. This information may be made available in one or more of the following forms: microfiche, photocopy, data tape, floppy disk, computer printout or clerically extracted tabulation. Generally, a charge is made for providing unpublished information. Inquiries should be made to Information Services in the nearest ABS office.

27. The estimates of average weekly earnings are rounded to the nearest 10 cents.

28. Percentage changes are calculated on the actual values and may differ from calculations based on rounded estimates.

Electronic services

VIATEL. Key *656# for selected current economic, social and demographic statistics.

AUSSTATS. Thousands of up-to-date time series are available on this ABS on-line service through CSIRONET.

For further information phone the AUSSTATS Help Desk on (062) 52 6017.

TELESTATS. This service provides foreign trade statistics tailored to users' requirements.

Further information is available on (062) 52 5404.

Floppy disk service

Selected ABS statistics are available on floppy disk. For further information phone (062) 52 6684.

IAN CASTLES
Australian Statistician

TABLE I. AVERAGE WEEKLY EARNINGS OF EMPLOYEES, AUSTRALIA

Reference period - pay period ending on or before	MALES			FEMALES			PERSONS		
	Full-time adults		All males	Full-time adults		All females	Full-time adults		All employees
	Average weekly ordinary time earnings	Average weekly total earnings	Average weekly total earnings	Average weekly ordinary time earnings	Average weekly total earnings	Average weekly total earnings	Average weekly ordinary time earnings	Average weekly total earnings	Average weekly total earnings
TOTAL EMPLOYEES									
- dollars -									
1986-									
21 February	427.20	460.10	422.70	352.80	360.60	276.40	404.20	429.50	364.10
16 May	432.60	465.90	425.50	356.40	364.90	278.20	409.20	434.90	366.50
15 August	444.00	476.20	437.20	363.60	371.90	282.90	418.90	443.70	373.70
20 November	452.10	488.60	446.30	372.70	382.00	287.60	427.20	455.20	380.60
1987-									
20 February	454.40	487.70	444.50	375.70	384.10	291.00	429.60	455.10	381.30
15 May	461.30	497.40	450.90	383.00	393.10	298.90	436.20	464.00	387.30
21 August	470.30	504.50	457.00	388.90	398.20	302.30	444.20	470.50	392.50
20 November	477.50	516.30	470.00	392.00	401.90	306.50	450.10	479.70	401.80
1988-									
19 February	485.70	522.40	474.90	402.20	412.20	315.30	458.80	486.90	408.80
20 May	491.40	532.40	481.70	409.20	419.50	316.40	464.80	495.80	411.90
- per cent -									
<i>Change - Quarterly</i>									
1986-									
February	1.8	1.4	2.1	2.2	1.9	3.0	1.8	1.5	2.4
May	1.3	1.2	0.7	1.0	1.2	0.7	1.2	1.3	0.7
August	2.7	2.2	2.7	2.0	1.9	1.7	2.4	2.0	2.0
November	1.8	2.6	2.1	2.5	2.7	1.7	2.0	2.6	1.8
1987-									
February	0.5	-0.2	-0.4	0.8	0.5	1.2	0.6	0.0	0.2
May	1.5	2.0	1.4	2.0	2.4	2.7	1.5	2.0	1.6
August	1.9	1.4	1.3	1.5	1.3	1.1	1.8	1.4	1.3
November	1.5	2.3	2.8	0.8	0.9	1.4	1.3	2.0	2.4
1988-									
February	1.7	1.2	1.1	2.6	2.6	2.9	1.9	1.5	1.8
May	1.2	1.9	1.4	1.7	1.8	0.3	1.3	1.8	0.8
<i>Change - Annual</i>									
1986-									
February	6.9	7.3	7.6	7.4	7.3	6.3	7.1	7.3	7.1
May	6.9	7.0	7.1	6.6	6.3	5.6	6.9	6.9	6.5
August	8.4	7.8	8.5	7.3	7.3	6.7	8.0	7.6	7.4
November	7.7	7.7	7.8	7.9	8.0	7.1	7.6	7.6	7.0
1987-									
February	6.4	6.0	5.2	6.5	6.5	5.3	6.3	6.0	4.7
May	6.6	6.8	6.0	7.5	7.7	7.4	6.6	6.7	5.7
August	5.9	5.9	4.5	7.0	7.0	6.9	6.0	6.0	5.0
November	5.6	5.7	5.3	5.2	5.2	6.6	5.4	5.4	5.6
1988-									
February	6.9	7.1	6.8	7.1	7.3	8.3	6.8	7.0	7.2
May	6.5	7.0	6.8	6.8	6.7	5.8	6.5	6.9	6.3
- dollars -									
<i>Standard errors(a)-</i>									
1988-									
May									
Level	2.70	2.80	3.10	2.20	2.20	2.30	2.10	2.20	2.50
Change (quarterly)	2.00	2.20	2.30	1.90	1.90	1.60	1.60	1.70	1.70

(a) See paragraphs 20-23 of the Explanatory Notes.

TABLE 2. AVERAGE WEEKLY EARNINGS OF EMPLOYEES, SECTOR, AUSTRALIA

Reference period - pay period ending on or before	MALES			FEMALES			PERSONS		
	Full-time adults		All males	Full-time adults		All females	Full-time adults		All employees
	Average weekly ordinary time earnings	Average weekly total earnings	Average weekly total earnings	Average weekly ordinary time earnings	Average weekly total earnings	Average weekly total earnings	Average weekly ordinary time earnings	Average weekly total earnings	Average weekly total earnings
PRIVATE SECTOR EMPLOYEES									
- dollars -									
1987-									
20 February	439.80	479.50	425.50	348.50	358.30	259.40	412.40	443.10	356.30
15 May	446.80	490.00	433.60	356.80	368.90	269.60	419.10	452.80	364.50
21 August	456.90	497.50	439.20	361.80	372.60	271.40	427.80	459.30	368.90
20 November	466.40	512.30	456.00	365.90	377.60	277.50	435.50	470.80	381.30
1988-									
19 February	474.60	518.00	458.40	376.70	388.60	284.10	444.40	478.00	386.00
20 May	477.90	525.80	464.20	380.90	392.30	283.50	447.80	484.40	387.60
- per cent -									
Change - Quarterly									
1987-									
February	0.4	-0.5	-1.2	0.8	0.4	0.8	0.4	-0.3	-0.6
May	1.6	2.2	1.9	2.4	3.0	3.9	1.6	2.2	2.3
August	2.3	1.5	1.3	1.4	1.0	0.7	2.1	1.4	1.2
November	2.1	3.0	3.8	1.1	1.3	2.3	1.8	2.5	3.4
1988-									
February	1.8	1.1	0.5	2.9	2.9	2.4	2.0	1.5	1.2
May	0.7	1.5	1.3	1.1	1.0	-0.2	0.8	1.3	0.4
Change - Annual									
1988-									
May	7.0	7.3	7.0	6.8	6.3	5.1	6.8	7.0	6.3
Standard errors(a)- 1988-									
May									
Level	4.00	4.20	4.50	3.70	3.50	3.20	3.30	3.40	3.60
Change (quarterly)	3.10	3.40	3.30	2.90	2.90	2.30	2.40	2.70	2.50
PUBLIC SECTOR EMPLOYEES									
- dollars -									
1987-									
20 February	480.50	502.50	483.30	416.40	422.80	359.50	458.80	475.40	433.50
15 May	487.60	510.90	486.20	423.20	430.20	360.60	465.40	483.10	434.30
21 August	494.60	517.30	493.50	430.20	437.00	367.20	472.40	489.60	441.30
20 November	498.20	523.80	498.90	433.50	440.70	367.30	476.00	495.30	444.30
1988-									
19 February	506.40	530.70	510.50	443.00	450.00	383.10	484.50	502.80	458.10
20 May	516.80	544.60	518.80	454.00	462.60	387.30	494.90	516.10	463.70
- per cent -									
Change - Quarterly									
1987-									
February	0.8	0.4	1.3	1.0	0.9	3.1	0.8	0.5	2.1
May	1.5	1.7	0.6	1.6	1.7	0.3	1.5	1.6	0.2
August	1.5	1.3	1.5	1.7	1.6	1.8	1.5	1.3	1.6
November	0.7	1.3	1.1	0.8	0.8	0.0	0.8	1.2	0.7
1988-									
February	1.7	1.3	2.3	2.2	2.1	4.3	1.8	1.5	3.1
May	2.0	2.6	1.6	2.5	2.8	1.1	2.2	2.6	1.2
Change - Annual									
1988-									
May	6.0	6.6	6.7	7.3	7.5	7.4	6.3	6.8	6.8
Standard errors(a)- 1988-									
May									
Level	1.60	1.50	1.60	1.00	1.00	1.60	1.20	1.20	1.40
Change (quarterly)	0.70	0.60	0.70	0.70	0.60	0.70	0.50	0.50	0.60

(a) See paragraphs 20-23 of the Explanatory Notes.

TABLE 3. AVERAGE WEEKLY EARNINGS OF EMPLOYEES, STATES AND TERRITORIES

Reference period - pay period ending on or before	MALES			FEMALES			PERSONS		
	Full-time adults		All males	Full-time adults		All females	Full-time adults		All employees
	Average weekly ordinary time earnings	Average weekly total earnings	Average weekly total earnings	Average weekly ordinary time earnings	Average weekly total earnings	Average weekly total earnings	Average weekly ordinary time earnings	Average weekly total earnings	Average weekly total earnings
- dollars -									
NEW SOUTH WALES									
1987-									
20 February	459.30	495.50	447.60	377.00	386.50	296.80	432.10	459.50	385.00
15 May	461.50	500.90	455.60	384.80	396.80	307.40	436.30	466.80	393.50
21 August	468.90	505.70	458.60	392.10	401.60	309.80	443.90	471.70	396.30
20 November	478.30	521.70	475.20	395.10	406.70	314.60	451.40	484.60	408.60
1988-									
19 February	487.70	526.90	480.20	404.40	415.40	322.80	460.40	490.50	415.20
20 May	496.00	542.00	489.60	413.10	424.00	324.90	468.50	502.80	420.00
- per cent -									
Change -									
Quarterly	1.7	2.9	1.9	2.2	2.1	0.7	1.7	2.5	1.2
Annual	7.5	8.2	7.5	7.4	6.9	5.7	7.4	7.7	6.7
- dollars -									
Standard errors(a)-									
Level	4.80	5.00	5.60	3.50	3.40	3.80	3.60	3.80	4.20
Change (quarterly)	3.30	3.70	3.80	3.50	3.40	2.50	2.60	3.00	2.70
VICTORIA									
1987-									
20 February	454.60	490.20	447.80	384.10	393.70	307.90	432.50	459.90	391.70
15 May	463.60	501.20	451.10	390.50	401.70	311.90	440.00	469.10	394.20
21 August	472.80	507.70	454.50	394.50	405.70	311.70	447.10	474.20	395.40
20 November	482.80	522.30	473.10	396.60	408.10	318.10	454.10	484.20	408.50
1988-									
19 February	493.90	531.30	476.30	409.30	420.10	326.70	465.50	494.10	414.40
20 May	498.30	539.60	483.50	412.20	423.70	322.70	469.30	500.40	414.90
- per cent -									
Change -									
Quarterly	0.9	1.6	1.5	0.7	0.8	-1.2	0.8	1.3	0.1
Annual	7.5	7.7	7.2	5.6	5.5	3.5	6.6	6.7	5.3
- dollars -									
Standard errors(a)-									
Level	6.10	5.90	6.70	5.50	5.30	5.30	4.90	4.80	5.50
Change (quarterly)	5.30	5.60	5.50	4.40	4.20	3.90	4.00	4.30	4.10
QUEENSLAND									
1987-									
20 February	440.50	464.00	425.30	353.30	358.70	269.80	413.30	431.10	360.50
15 May	450.10	475.90	433.50	365.90	372.70	278.70	424.30	444.30	369.70
21 August	457.00	486.70	445.60	370.00	376.70	279.60	430.60	453.20	377.20
20 November	458.60	488.00	441.10	372.00	378.10	282.30	431.90	454.20	375.90
1988-									
19 February	460.70	488.90	445.20	381.30	389.30	289.20	436.70	458.80	382.30
20 May	466.80	499.00	454.90	388.90	397.30	297.80	442.90	467.80	390.40
- per cent -									
Change -									
Quarterly	1.3	2.1	2.2	2.0	2.1	3.0	1.4	2.0	2.1
Annual	3.7	4.8	4.9	6.3	6.6	6.9	4.4	5.3	5.6
- dollars -									
Standard errors(a)-									
Level	7.00	7.00	7.20	4.70	4.70	5.20	5.50	5.60	5.90
Change (quarterly)	5.80	5.90	5.70	4.50	4.70	4.50	4.20	4.40	4.40
SOUTH AUSTRALIA									
1987-									
20 February	430.00	453.20	408.00	361.30	368.00	265.80	410.80	429.50	350.30
15 May	438.20	463.50	411.80	372.90	379.40	274.20	418.80	438.60	353.60
21 August	448.80	472.30	425.70	377.00	382.20	286.80	427.70	445.70	368.20
20 November	456.90	484.00	442.00	385.30	392.70	293.90	435.00	456.00	378.40
1988-									
19 February	462.30	489.80	448.20	391.40	399.50	299.60	441.70	463.50	386.70
20 May	466.40	493.90	444.30	404.90	413.40	299.90	449.20	471.40	384.90
- per cent -									
Change -									
Quarterly	0.9	0.9	-0.9	3.4	3.5	9.0	1.7	1.7	-0.5
Annual	6.4	6.6	7.9	8.6	9.0	9.4	7.2	7.5	8.8
- dollars -									
Standard errors(a)-									
Level	8.20	8.00	8.80	4.30	4.50	6.00	6.10	6.10	7.20
Change (quarterly)	3.50	3.80	5.70	2.50	2.70	3.70	2.70	3.10	4.10

(a) See paragraphs 20-23 of the Explanatory Notes.

TABLE 3. AVERAGE WEEKLY EARNINGS OF EMPLOYEES, STATES AND TERRITORIES - continued

Reference period - pay period ending on or before	MALES			FEMALES			PERSONS		
	Full-time adults		All males	Full-time adults		All females	Full-time adults		All employees
	Average weekly ordinary time earnings	Average weekly total earnings	Average weekly total earnings	Average weekly ordinary time earnings	Average weekly total earnings	Average weekly total earnings	Average weekly ordinary time earnings	Average weekly total earnings	Average weekly total earnings
WESTERN AUSTRALIA - dollars -									
1987-									
20 February	459.60	501.50	468.20	374.70	382.00	265.40	435.50	467.60	381.90
15 May	473.00	520.80	480.20	375.30	383.80	277.90	441.70	476.90	390.50
21 August	485.60	526.80	487.30	388.20	399.00	286.80	457.10	489.30	404.10
20 November	483.90	530.90	494.80	390.30	397.50	285.40	457.30	493.00	408.10
1988-									
19 February	496.30	543.80	506.10	394.50	403.50	297.30	464.90	500.50	417.60
20 May	499.20	546.60	509.90	403.30	412.70	297.90	470.20	506.10	418.80
Change -									
Quarterly	-0.6	0.5	0.7	2.2	2.3	0.2	1.2	1.1	0.3
Annual	5.5	5.0	6.2	7.4	7.5	7.2	6.4	6.1	7.2
Standard errors(a)-									
Level	6.20	8.60	8.90	7.00	7.20	7.00	5.30	7.20	8.10
Change (quarterly)	3.40	4.20	4.40	4.90	4.80	4.50	3.40	3.80	4.00
TASMANIA									
1987-									
20 February	439.00	473.50	440.10	370.60	376.90	269.70	420.10	446.80	370.90
15 May	444.20	476.30	438.20	370.50	377.60	266.40	423.70	448.90	366.20
21 August	453.40	483.40	440.00	375.70	382.80	270.10	431.20	454.60	369.50
20 November	460.80	494.80	442.70	382.60	389.10	270.70	438.60	464.80	371.00
1988-									
19 February	467.90	505.20	462.80	390.90	399.20	286.20	445.50	474.40	389.90
20 May	471.80	512.50	460.00	401.40	408.50	289.30	452.10	483.40	390.30
Change -									
Quarterly	0.8	1.4	-0.6	2.7	2.3	1.1	1.5	1.9	0.1
Annual	6.2	7.6	5.0	8.3	8.2	8.6	6.7	7.7	6.6
Standard errors(a)-									
Level	6.60	6.50	7.00	9.20	9.10	6.30	6.20	6.30	6.40
Change (quarterly)	2.90	3.70	4.20	5.80	5.90	4.80	2.60	3.10	3.70
NORTHERN TERRITORY									
1987-									
20 February	498.60	540.40	495.90	423.40	432.50	345.20	471.90	502.00	432.70
15 May	501.10	550.00	505.60	418.80	427.50	344.50	471.70	506.30	437.10
21 August	514.20	558.30	508.50	431.90	440.70	353.70	484.30	515.50	442.00
20 November	513.60	557.40	502.50	434.10	442.80	348.40	484.30	515.20	435.30
1988-									
19 February	514.90	563.60	517.30	454.60	465.60	374.90	492.80	527.60	455.50
20 May	510.60	560.10	512.10	445.40	456.80	365.00	486.20	521.50	447.20
Change -									
Quarterly	-0.8	-0.6	-1.0	-2.0	-1.9	-2.6	-1.3	-1.2	-1.8
Annual	1.9	1.8	1.3	6.3	6.8	6.0	3.1	3.0	2.3
Standard errors(a)-									
Level	6.60	8.10	9.20	4.10	4.30	9.40	4.50	5.60	8.30
Change (quarterly)	5.70	6.00	6.70	3.50	3.60	7.20	4.10	4.40	5.60
AUSTRALIAN CAPITAL TERRITORY									
1987-									
20 February	539.70	561.80	513.20	411.20	417.60	343.50	490.50	506.60	438.30
15 May	546.80	569.90	518.90	416.00	424.10	340.40	495.70	512.90	436.30
21 August	555.90	581.20	524.00	419.30	426.70	344.90	501.80	520.00	441.20
20 November	562.20	589.50	535.40	425.90	433.70	347.00	509.10	528.90	448.00
1988-									
19 February	571.00	596.80	541.50	440.10	447.10	357.30	519.90	538.40	457.30
20 May	578.10	610.50	554.90	446.40	456.10	361.90	527.00	550.60	464.50
Change -									
Quarterly	1.2	2.3	2.5	1.4	2.0	1.3	1.4	2.3	1.6
Annual	5.7	7.1	6.9	7.3	7.5	6.3	6.3	7.3	6.5
Standard errors(a)-									
Level	7.80	8.60	10.00	3.70	3.60	9.10	5.50	5.90	9.30
Change (quarterly)	3.80	4.70	5.60	1.90	2.00	4.50	2.40	2.90	3.90

(a) See paragraphs 20-23 of the Explanatory Notes.

