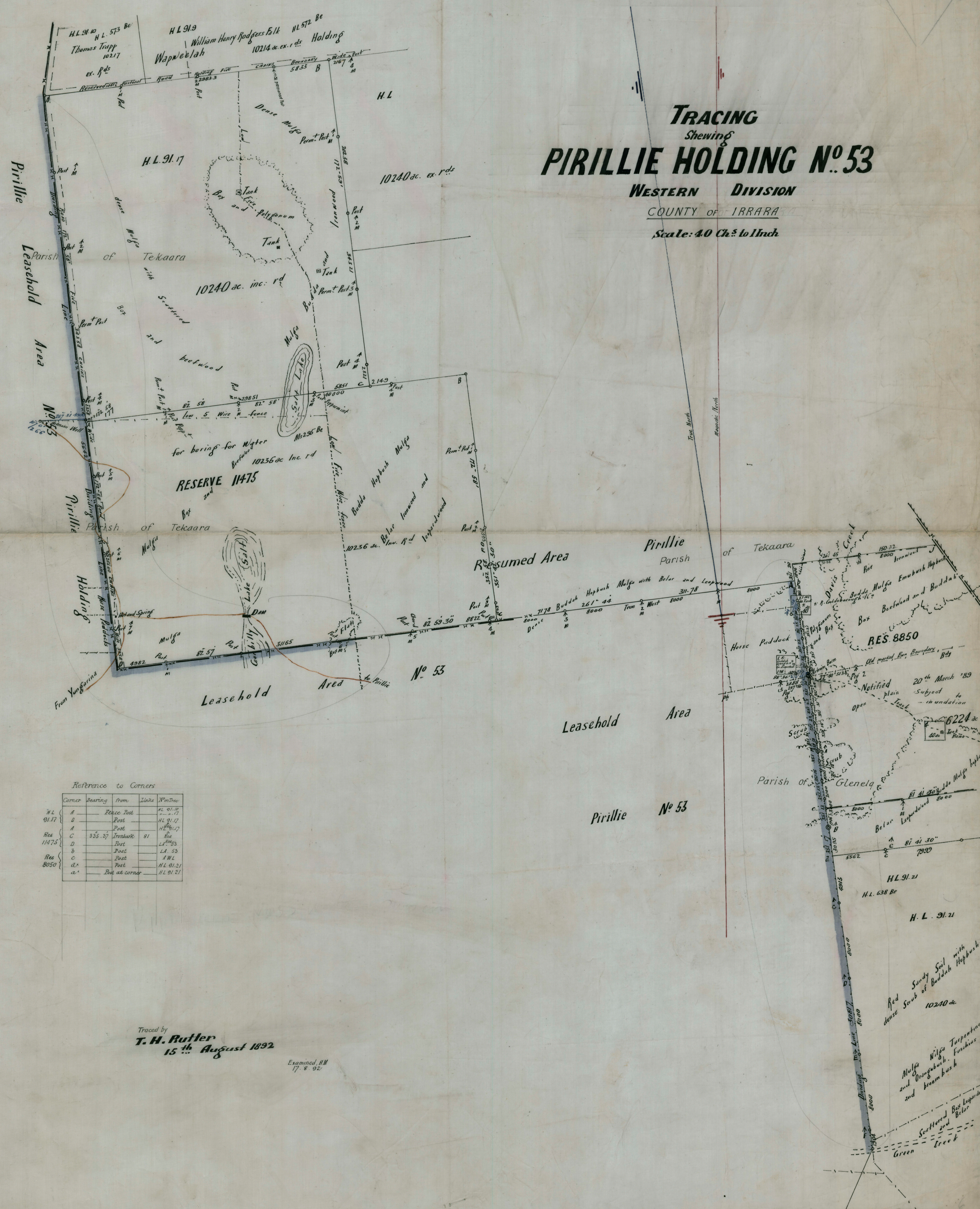


1014

TRACING
Shewing
PIRILLIE HOLDING N^o 53
WESTERN DIVISION
 COUNTY OF IRRARA
 Scale: 40 Ch. to 1 Inch



Reference to Corners

Corner	Bearing	From	Line	Notes
H.L.				
91.17	A	Police Post		H.L. 91.17
	D	Post		H.L. 91.17
	A	Post		H.L. 91.17
Res 11475	C	355.57	Ironbark	91
	D	Post		L.A. 91.17
	b	Post		L.A. 53
Res 8050	C	Post		A.W.L.
	d	Post		H.L. 91.21
	a	Post at corner		H.L. 91.21

Traced by
T. H. Rutter
 15th August 1892

Examined A.M.
 17. 8. 92