



CATALOGUE NUMBER 6201.2

THE LABOUR FORCE, VICTORIA MARCH 1986

1 MAY 1986

INQUIRIES

Inquiries concerning these statistics may be made by telephoning Information Services (Labour force statistics) on Melbourne (03) 63 0181; for advice on the interpretation of these statistics ask for Mr Vince Lazzaro.

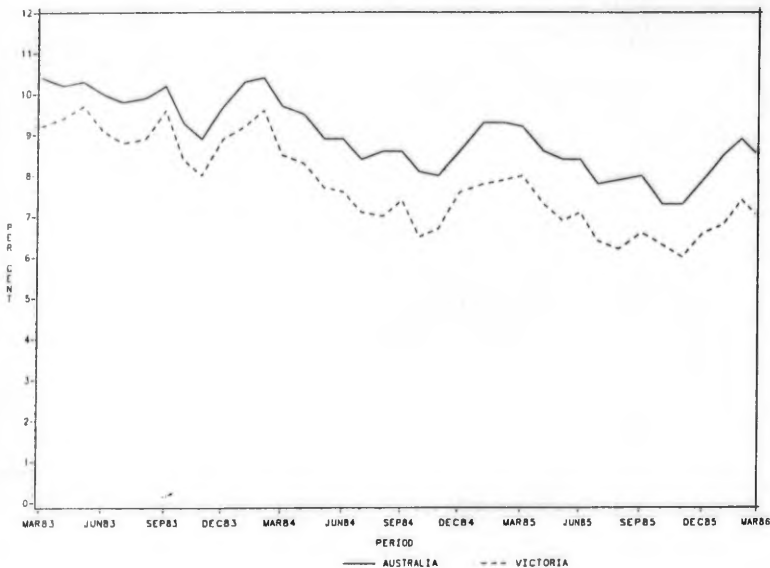
MAIN FEATURES

In March 1986 there were an estimated 2,001,200 persons in the labour force in Victoria of whom 1,860,800 were employed and 140,400 unemployed, compared with an estimated 1,197,400 persons aged 15 and over who were not in the labour force. The labour force participation rate was 62.6 per cent for persons, 75.9 per cent for males, and 49.7 per cent for females.

Victoria's unemployment rate was 7.0 per cent for March 1986. The unemployment rate for Australia for the same period was 8.5 per cent and for Victoria 12 months previously (March 1985) was 8.0 per cent. In March 1986 Victoria's unemployment rate was 6.0 per cent for males and 8.5 per cent for females.

The median duration of unemployment in Victoria for March 1986 was 12.0 weeks for persons, 16.0 weeks for males, and 9.0 weeks for females.

UNEMPLOYMENT RATES, VICTORIA AND AUSTRALIA



EXPLANATORY NOTES

Introduction

This publication contains Victorian labour force estimates derived from the Monthly Population Survey conducted throughout Australia by the Australian Bureau of Statistics. Labour force estimates for employed persons classified by industry and occupation are available quarterly (i.e. each February, May, August, and November) in The Labour Force, Victorian Regions (6202.2)

Conduct of the ABS Monthly Population Survey

2. The survey is based on a multi-stage area sample of private dwellings (houses, flats, etc.) and non-private dwellings (hotels, motels, etc.) and covers about one-half of one per cent of the Victorian population.

Scope of survey

3. All persons aged 15 years and over are included in the survey except:

- (a) members of the permanent defence forces;
- (b) certain diplomatic personnel of overseas governments;
- (c) overseas visitors holidaying in Australia; and
- (d) members of non-Australian defence forces (and their dependants) stationed in Australia.

Definitions

4. The labour force category to which a person is assigned depends on his or her actual activity (i.e. whether working, looking for work, etc.) during the survey week. The definitions conform closely to the standard definitions recommended by the International Labour Organisation.

Employed persons comprise all those aged 15 years and over who, during the survey week:

- (a) worked for one hour or more for pay, profit, commission, or payment in kind in a job or business, or on a farm (including employees, employers, and self-employed persons); or
- (b) worked for 15 hours or more without pay in a family business or on a farm (i.e. unpaid family helper); or
- (c) were employees who had a job but were not at work and were:
 - (i) on paid leave;
 - (ii) on leave without pay for less than four weeks up to the end of the survey week;
 - (iii) stood down without pay because of bad weather or plant breakdown at

their place of employment for less than four weeks, up to the end of the survey week;

- (iv) on strike or locked out;
- (v) on workers' compensation and expected to be returning to their job; or
- (vi) receiving wages or salary while undertaking full-time study; or
- (d) were employers or self-employed persons who had a job, business, or farm, but were not at work.

Unemployed persons are those aged 15 years and over who were not employed during the survey week and:

- (a) had actively looked for full-time or part-time work at any time in the four weeks up to the end of the survey week and were:
 - (i) available for work in the survey week, or would have been available except for temporary illness (i.e. lasting for less than four weeks); or
 - (ii) waiting to start a new job within four weeks from the end of the survey week and would have started in the survey week if the job had been available then; or
- (b) were waiting to be called back to a full-time or part-time job from which they had been stood down without pay for less than four weeks up to the end of the survey week (including the whole survey week) for reasons other than bad weather or plant breakdown.

The labour force comprises all persons who, during the survey week, were employed or unemployed, as defined above.

The unemployment rate is the number of unemployed in each group as a percentage of the labour force in the same group.

The participation rate is the labour force in each group as a percentage of the civilian population aged 15 years and over in the same group.

Full-time workers are those who usually work 35 hours a week or more and others who, although usually part-time workers, worked 35 hours or more during the survey week.

Part-time workers are those who usually work less than 35 hours a week and who did so during

the survey week. When recording hours of work, fractions of an hour are disregarded.

Persons not in the labour force are those who, during the survey week, were not in the categories 'employed' or 'unemployed'.

Marital status. In the labour force survey, persons are classified as married (including de facto) or not married. Marital status is determined from information supplied by the respondent about the individual himself or herself and, where the person was reported as being married, about the living arrangements of persons usually resident in the household.

A family is defined as consisting of two or more related persons usually resident in the same household at the time of the survey. A family can contain no more than two married persons and can contain two married persons only if these persons are husband and wife.

Hours of work. The figures of aggregate hours and average hours refer to actual hours worked during the survey week, not hours paid for.

Average (mean) duration of unemployment is the duration obtained by dividing the aggregate number of weeks a group has been unemployed by the number of persons in that group.

Median duration of unemployment is the duration which divides unemployed persons into two equal groups, one comprising persons whose duration of unemployment is above the median, and the other, persons whose duration is below it.

Revision of series

5. Survey estimates are not revised for the usually small amendments of population benchmarks arising from new data on deaths and overseas and internal migration. Revisions are made, however, after each Census of Population and Housing, and when population estimation bases are reviewed.

Reliability of estimates

6. Since the estimates in this publication are based on information obtained from occupants of a sample of dwellings they, and the movements derived from them, may differ from the figures that would have been produced if all dwellings had been included in the

survey. One measure of the likely difference is given by the standard error of an estimate. There are about two chances in three that a sample estimate will differ by less than one standard error from the figure that would have been obtained if all dwellings had been included in the survey, and about nineteen chances in twenty that the difference will be less than two standard errors. Standard errors of survey estimates and month to month movements are shown in Tables A and B at the end of this publication. An explanation of standard errors and their use can be found in Section 4.5 of Information Paper: Victorian Labour Force Statistics (6262.2).

Related publications

7. Users may also wish to refer to the following ABS publications, which are available on request:

The Labour Force, Australia, Preliminary
(6202.0) (monthly)

The Labour Force, Victorian Regions (6202.2)
(quarterly)

The Labour Force, Australia (6203.0) (monthly)

The Labour Force, Australia (6204.0) (annual)

Information Paper: Victorian Labour Force Statistics (6262.2)

8. Current publications produced by the ABS are listed in the Catalogue of Publications, Australia (1101.0) which is available free of charge from any ABS Office.

9. Other unpublished data from labour force surveys on aspects of the Victorian labour force are held by the Victorian Office of the ABS, and may be available on request.

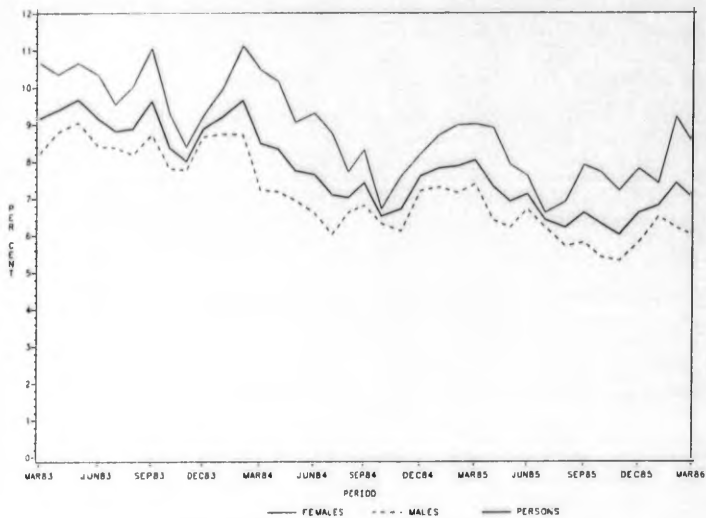
Symbols and other usages

na not available
.. not applicable
* subject to sampling variability too high for most practical purposes

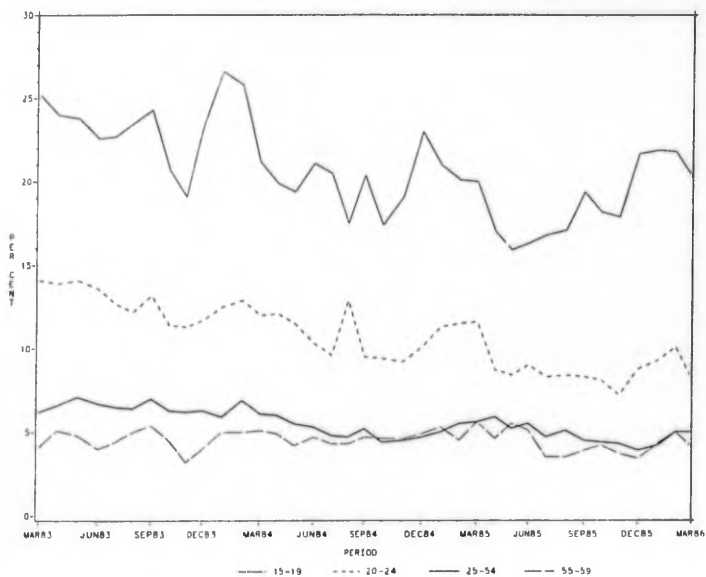
Where figures have been rounded, discrepancies may occur between sums of the component items and totals.

ERLE BOURKE
Deputy Commonwealth Statistician

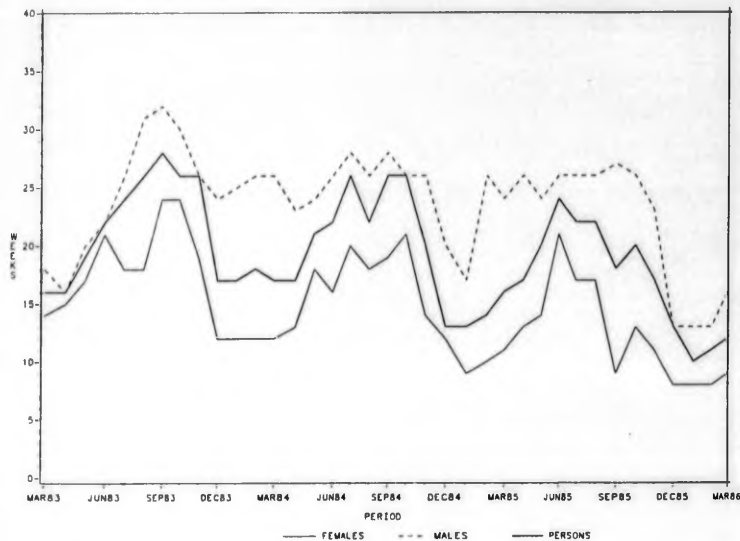
UNEMPLOYMENT RATES, BY SEX, VICTORIA



UNEMPLOYMENT RATES BY AGE, VICTORIA



MEDIAN DURATION OF UNEMPLOYMENT BY SEX, VICTORIA



MEDIAN DURATION OF UNEMPLOYMENT BY AGE, VICTORIA

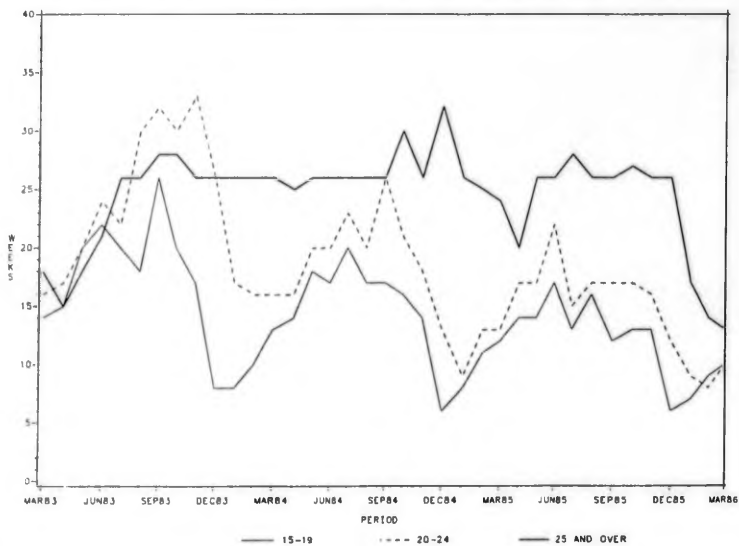


TABLE 1. CIVILIAN POPULATION AGED 15 YEARS AND OVER BY LABOUR FORCE STATUS, VICTORIA

Month	Employed		Unemployed looking for work			Labour force ('000)	Not in labour force ('000)	Civilian 15 years and over ('000)	Unemploy- ment rate (per cent)	Partici- pation rate (per cent)
	Full- time	Total	Full- time	Part- time	Total					
	('000)	('000)	('000)	('000)	('000)					
MALES										
1985 - Jan.	1,007.2	1,066.6	74.3	9.2	83.6	1,150.2	383.5	1,533.7	7.3	75.0
Feb.	1,020.2	1,081.1	76.0	7.2	83.2	1,164.2	371.3	1,535.6	7.1	75.8
Mar.	1,007.4	1,071.7	77.5	8.0	85.5	1,157.1	380.3	1,537.5	7.4	75.3
Apr.	1,002.3	1,073.4	64.1	8.9	73.0	1,146.4	393.1	1,539.5	6.4	74.5
May	1,007.8	1,078.4	62.4	9.3	71.7	1,150.1	391.5	1,541.6	6.2	74.6
June	1,004.9	1,074.1	71.6	5.4	77.0	1,151.1	392.6	1,543.8	6.7	74.6
July	1,021.2	1,087.9	66.9	5.4	72.4	1,160.2	385.7	1,545.9	6.2	75.0
Aug.	1,027.8	1,094.8	60.1	5.9	66.0	1,160.7	387.6	1,548.3	5.7	75.0
Sept.	1,034.4	1,107.4	59.4	8.6	68.0	1,175.4	375.3	1,550.7	5.8	75.8
Oct.	1,018.0	1,088.9	55.2	7.4	62.6	1,151.5	401.9	1,553.4	5.4	74.1
Nov.	1,042.2	1,109.6	54.4	7.8	62.2	1,171.8	384.1	1,555.8	5.3	75.3
Dec.	1,046.6	1,113.9	60.3	8.6	68.9	1,182.9	375.4	1,558.3	5.8	75.9
1986 - Jan.	1,044.1	1,099.3	65.7	10.1	75.9	1,175.1	386.6	1,561.8	6.5	75.2
Feb.	1,048.9	1,109.3	66.5	6.8	73.3	1,182.6	382.1	1,564.7	6.2	75.6
Mar.	1,043.8	1,118.8	58.4	12.9	71.3	1,190.1	377.5	1,567.5	6.0	75.9
MARRIED FEMALES										
1985 - Jan.	224.8	386.6	11.6	6.4	18.0	404.6	559.4	964.0	4.5	42.0
Feb.	228.3	407.5	15.1	11.3	26.4	433.9	535.2	969.1	6.1	44.8
Mar.	230.5	410.4	14.3	14.4	28.7	439.1	527.7	966.8	6.5	45.4
Apr.	219.3	398.7	14.9	15.2	30.1	428.8	530.7	959.5	7.0	44.7
May	221.9	409.1	11.1	14.7	25.8	434.9	524.3	959.2	5.9	45.3
June	220.5	411.1	12.3	11.4	23.7	434.9	519.1	954.0	5.5	45.6
July	223.2	418.8	8.3	10.2	18.6	437.3	520.6	958.0	4.2	45.6
Aug.	224.6	407.1	12.1	9.1	21.2	428.3	527.5	955.8	5.0	44.8
Sept.	233.3	419.2	11.5	12.7	24.2	443.4	519.7	963.1	5.5	46.0
Oct.	233.3	416.0	11.5	13.0	24.6	440.6	526.3	966.9	5.6	45.6
Nov.	230.8	429.2	11.1	9.7	20.8	450.0	515.0	965.1	4.6	46.6
Dec.	235.2	426.4	10.9	8.8	19.7	446.2	518.2	964.4	4.4	46.3
1986 - Jan.	227.7	396.6	10.1	6.9	17.1	413.7	544.8	958.5	4.1	43.2
Feb.	233.0	418.8	16.0	12.7	28.7	447.5	515.8	963.3	6.4	46.5
Mar.	239.7	440.4	13.5	16.2	29.7	470.1	488.4	958.5	6.4	49.0
OTHER FEMALES										
1985 - Jan.	205.8	264.1	36.0	8.1	44.1	308.1	326.2	634.3	14.3	48.6
Feb.	211.6	269.9	32.9	7.6	40.4	310.3	320.9	631.2	13.0	49.2
Mar.	209.5	275.1	29.7	9.4	39.1	314.2	321.4	635.6	12.4	49.4
Apr.	208.1	270.5	26.1	8.8	34.9	305.4	339.5	645.0	11.4	47.4
May	212.1	277.9	24.8	8.3	33.2	311.1	336.2	647.3	10.7	48.1
June	216.5	281.8	26.6	6.8	33.5	315.3	339.3	654.6	10.6	48.2
July	218.8	288.3	23.1	8.2	31.3	319.6	333.3	652.9	9.8	48.9
Aug.	215.4	283.9	22.9	7.1	30.0	313.9	343.6	657.5	9.6	47.7
Sept.	217.0	284.8	25.8	10.4	36.2	321.0	331.6	652.6	11.3	49.2
Oct.	211.7	282.1	25.5	8.5	34.0	316.1	335.1	651.2	10.7	48.5
Nov.	214.0	289.9	25.7	9.1	34.7	324.7	330.9	655.5	10.7	49.5
Dec.	226.4	300.8	31.9	10.2	42.1	342.9	315.8	658.7	12.3	52.1
1986 - Jan.	236.1	301.7	31.1	7.9	39.0	340.7	326.5	667.3	11.4	51.1
Feb.	227.1	298.3	32.3	11.4	43.8	342.1	323.1	665.2	12.8	51.4
Mar.	229.9	301.6	25.5	13.9	39.5	341.0	331.6	672.6	11.6	50.7

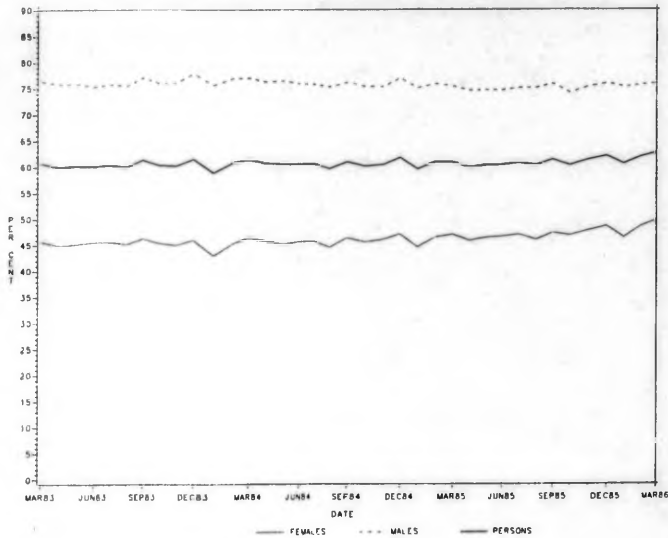
TABLE 1. CIVILIAN POPULATION AGED 15 YEARS AND OVER BY LABOUR FORCE STATUS, VICTORIA - continued

Month	Employed		Unemployed looking for work			Labour force ('000)	Not in labour force ('000)	Civilian population 15 years and over ('000)	Unemploy- ment rate (per cent)	Partici- pation rate (per cent)
	Full- time	Total	Full- time	Part- time	Total					
	('000)	('000)	('000)	('000)	('000)					
ALL FEMALES										
1985 - Jan.	430.6	650.7	47.6	14.5	62.1	712.8	885.5	1,598.3	8.7	44.6
Feb.	439.9	677.4	48.0	18.9	66.8	744.2	856.1	1,600.3	9.0	46.5
Mar.	440.0	685.5	44.0	23.8	67.8	753.3	849.1	1,602.4	9.0	47.0
Apr.	427.4	669.2	41.0	24.0	65.0	734.2	870.2	1,604.4	8.9	45.8
May	434.0	687.0	36.0	23.0	59.0	746.0	860.5	1,606.5	7.9	46.4
June	437.0	693.0	38.9	18.2	57.2	750.2	858.4	1,608.6	7.6	46.6
July	442.0	707.1	31.4	18.4	49.8	756.9	854.0	1,611.0	6.6	47.0
Aug.	440.0	690.9	35.0	16.2	51.2	742.2	871.1	1,613.3	6.9	46.0
Sept.	450.2	704.0	37.2	23.1	60.4	764.4	851.3	1,615.7	7.9	47.3
Oct.	445.0	698.1	37.0	21.5	58.5	756.6	861.5	1,618.1	7.7	46.8
Nov.	444.7	719.1	36.8	18.8	55.6	774.7	845.9	1,620.6	7.2	47.8
Dec.	461.6	727.2	42.8	19.0	61.8	789.0	834.0	1,623.1	7.8	48.6
1986 - Jan.	463.7	698.4	41.2	14.9	56.1	754.4	871.3	1,625.7	7.4	46.4
Feb.	460.0	717.2	48.3	24.1	72.4	789.6	838.8	1,628.4	9.2	48.5
Mar.	469.6	742.0	39.0	30.1	69.1	811.1	820.0	1,631.1	8.5	49.7
PERSONS										
1985 - Jan.	1,437.9	1,717.3	122.0	23.7	145.7	1,863.0	1,269.0	3,132.0	7.8	59.5
Feb.	1,460.1	1,758.4	123.9	26.1	150.0	1,908.5	1,227.5	3,135.9	7.9	60.9
Mar.	1,447.4	1,757.2	121.4	31.8	153.3	1,910.4	1,229.4	3,139.8	8.0	60.8
Apr.	1,429.7	1,742.5	105.1	33.0	138.0	1,880.6	1,263.4	3,143.9	7.3	59.8
May	1,441.9	1,765.5	98.4	32.3	130.6	1,896.1	1,252.0	3,148.1	6.9	60.2
June	1,441.9	1,767.1	110.5	23.6	134.2	1,901.3	1,251.1	3,152.4	7.1	60.3
July	1,463.2	1,795.0	98.3	23.9	122.2	1,917.2	1,239.6	3,156.8	6.4	60.7
Aug.	1,467.8	1,785.7	95.1	22.1	117.2	1,902.9	1,258.7	3,161.6	6.2	60.2
Sept.	1,484.6	1,811.5	96.6	31.7	128.3	1,939.8	1,226.5	3,166.3	6.6	61.3
Oct.	1,463.1	1,787.0	92.2	28.9	121.1	1,908.1	1,263.4	3,171.5	6.3	60.2
Nov.	1,487.0	1,828.7	91.1	26.6	117.7	1,946.4	1,230.0	3,176.4	6.0	61.3
Dec.	1,508.2	1,841.2	103.1	27.7	130.8	1,971.9	1,209.4	3,181.4	6.6	62.0
1986 - Jan.	1,507.8	1,797.7	106.9	25.0	131.9	1,929.6	1,258.0	3,187.5	6.8	60.5
Feb.	1,508.9	1,826.5	114.8	30.9	145.7	1,972.2	1,220.9	3,193.1	7.4	61.2
Mar.	1,513.3	1,860.8	97.4	43.0	140.4	2,001.2	1,197.4	3,198.6	7.0	62.6

TABLE 2. CIVILIAN POPULATION AGED 15 YEARS AND OVER BY LABOUR FORCE STATUS AND AGE, VICTORIA, MARCH 1986

Age group (years)	Females				Persons
	Males	Married	Other	Total	
LABOUR FORCE ('000)					
15-17	53.5	*	50.3	50.7	104.3
18-19	54.2	*	52.6	54.6	108.8
Total aged 15-19 years	107.7	*	103.0	105.4	213.1
20-24	160.2	43.9	94.2	138.1	298.3
25-34	316.2	144.9	67.5	212.4	528.5
35-44	275.6	158.7	34.1	192.8	468.4
45-54	189.8	82.7	25.7	108.4	298.2
55-59	78.6	25.1	10.3	35.4	114.0
60-64	44.0	8.0	*	11.2	55.2
65 and over	18.0	4.4	*	7.5	25.5
Total	1,190.1	470.1	341.0	811.1	2,001.2
NOT IN LABOUR FORCE ('000)					
15-17	58.2	*	57.2	57.2	115.5
18-19	16.0	*	11.0	13.0	29.0
Total aged 15-19 years	74.2	*	68.2	70.3	144.5
20-24	18.0	17.5	18.5	36.0	54.0
25-34	16.3	104.5	18.7	123.2	139.6
35-44	15.0	80.5	14.7	95.2	110.2
45-54	19.6	75.9	18.3	94.2	113.7
55-59	23.0	51.0	13.7	64.7	87.7
60-64	47.1	60.0	25.6	85.6	132.6
65 and over	164.3	97.1	153.8	250.9	415.1
Total	377.5	488.4	331.6	820.0	1,197.4
PARTICIPATION RATES (PER CENT)					
15-17	47.9	*	46.8	47.0	47.5
18-19	77.2	*	82.7	80.7	78.9
Total aged 15-19 years	59.2	*	60.1	60.0	59.6
20-24	89.9	71.5	83.6	79.3	84.7
25-34	95.1	58.1	78.3	63.3	79.1
35-44	94.8	66.4	69.9	67.0	81.0
45-54	90.7	52.2	58.4	53.5	72.4
55-59	77.3	33.0	43.0	35.4	56.5
60-64	48.3	11.8	*	11.6	29.4
65 and over	9.9	4.3	*	2.9	5.8
Total	75.9	49.0	50.7	49.7	62.6

PARTICIPATION RATES BY SEX, VICTORIA



PARTICIPATION RATES BY AGE, VICTORIA

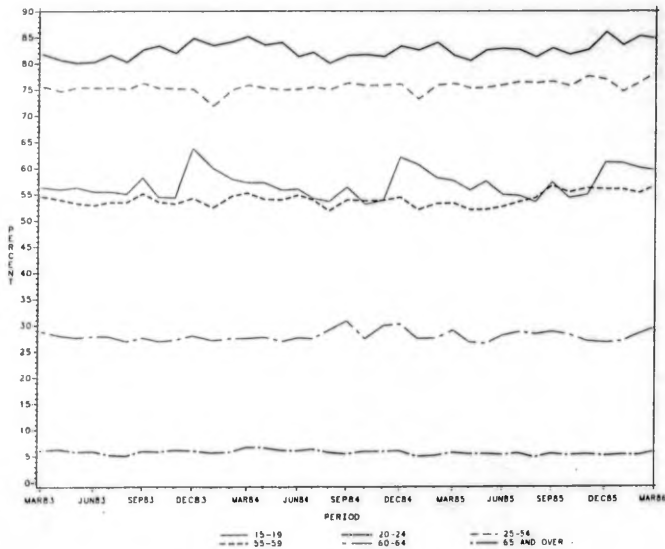


TABLE 3. CIVILIAN POPULATION AGED 15 YEARS AND OVER BY LABOUR FORCE STATUS, BIRTHPLACE, AND PERIOD OF ARRIVAL IN AUSTRALIA, VICTORIA, MARCH 1986

Birthplace particulars	Employed			Unempl- oyed ('000)	Labour force ('000)	Not in labour force ('000)	Unempl- oyment rate (per cent)	Partic- ipation rate(a) (per cent)
	Full-time ('000)	Part-time ('000)	Total ('000)					
MALES								
Born in Australia	743.7	58.2	801.9	49.8	851.6	250.6	5.8	77.3
Born outside Australia -								
Europe - Greece	23.3	*	24.1	*	25.3	11.3	*	69.2
Italy	39.2	*	40.3	*	41.6	16.3	*	71.8
U.K. and Ireland	87.1	4.3	91.4	4.0	95.4	26.4	4.2	78.3
Yugoslavia	24.2	*	25.3	*	27.1	7.8	*	77.7
Other Europe	58.8	4.3	63.1	4.2	67.3	23.5	6.3	74.2
Total Europe	232.6	11.6	244.2	12.5	256.7	85.2	4.9	75.1
New Zealand	8.9	*	9.6	*	10.4	*	*	90.9
Other countries	58.6	4.6	63.2	8.1	71.3	23.5	11.3	75.3
Main English-speaking countries (b)	102.7	5.2	107.9	5.1	113.1	28.6	4.5	79.8
Other	197.3	11.7	209.0	16.4	225.4	81.1	7.3	73.5
Period of arrival -								
Before 1961	104.3	6.0	110.2	6.1	116.4	58.2	5.3	66.7
1961 to 1965	41.4	*	42.7	*	45.9	9.2	*	83.4
1966 to 1970	61.2	*	64.2	*	68.2	13.4	*	83.6
1971 to 1975	36.4	*	39.0	*	41.3	10.6	*	79.5
1976 to 1980	27.8	*	30.1	*	32.3	6.8	*	82.5
1981 to survey date	29.1	*	30.6	*	34.4	11.5	*	74.9
Total overseas born	300.1	16.9	316.9	21.5	338.4	109.7	6.4	75.5
FEMALES								
Born in Australia	337.0	218.9	555.9	49.3	605.3	568.6	8.1	51.6
Born outside Australia -								
Europe - Greece	11.9	*	14.4	*	15.9	20.1	*	44.2
Italy	13.4	4.1	17.5	*	18.1	33.2	*	35.3
U.K. and Ireland	32.7	23.0	55.7	4.2	59.8	59.3	7.0	50.2
Yugoslavia	9.7	*	12.0	*	14.0	14.3	*	49.5
Other Europe	23.3	10.0	33.3	*	36.6	49.0	*	42.8
Total Europe	91.0	42.0	132.9	11.5	144.5	175.9	8.0	45.1
New Zealand	8.8	*	9.7	*	10.1	4.1	*	71.2
Other countries	32.8	10.7	43.5	7.8	51.3	46.8	15.3	52.3
Main English-speaking countries (b)	44.6	24.9	69.5	5.0	74.5	67.6	6.8	52.4
Other	88.0	28.6	116.6	14.8	131.4	159.2	11.2	45.2
Period of arrival -								
Before 1961	30.1	20.7	50.8	*	54.6	107.0	*	33.8
1961 to 1965	18.4	6.9	25.3	*	27.2	24.0	*	53.1
1966 to 1970	30.2	8.2	38.4	*	41.0	34.0	*	54.7
1971 to 1975	22.2	6.6	28.8	*	31.1	21.4	*	59.2
1976 to 1980	18.0	5.4	23.4	*	25.6	15.1	*	62.9
1981 to survey date	13.7	5.7	19.3	7.1	26.5	25.4	27.0	51.0
Total overseas born	132.6	53.5	186.1	19.8	205.9	226.8	9.6	47.6

TABLE 3. CIVILIAN POPULATION AGED 15 YEARS AND OVER BY LABOUR FORCE STATUS, BIRTHPLACE, AND PERIOD OF ARRIVAL IN AUSTRALIA, VICTORIA, MARCH 1986 - continued

Birthplace particulars	Employed			Unempl- oyed ('000)	Labour force ('000)	Not in labour force ('000)	Unempl- oyment rate (per cent)	Partic- ipation rate(a) (per cent)
	Full-time ('000)	Part-time ('000)	Total ('000)					
PERSONS								
Born in Australia	1,080.7	277.1	1,357.8	99.1	1,456.9	819.2	6.8	64.0
Born outside Australia -								
Africa	13.6	*	15.4	*	17.8	9.6	*	65.0
America	11.5	*	13.0	*	13.9	7.0	*	66.6
Asia	63.9	10.9	74.8	11.5	86.3	53.3	13.3	61.8
Europe - Germany	20.3	*	23.7	*	25.3	12.6	*	66.6
Greece	35.1	*	38.6	*	41.2	31.4	*	56.8
Italy	52.6	5.2	57.7	*	59.7	49.6	*	54.7
Malta	10.0	*	11.7	*	13.1	6.8	*	66.0
Netherlands	11.8	*	13.6	*	14.7	11.5	*	56.1
Poland	8.5	*	10.1	*	11.6	12.9	*	47.5
U.K. and Ireland	119.8	27.2	147.1	8.2	155.3	85.7	5.3	64.4
Yugoslavia	33.9	*	37.3	*	41.1	22.1	*	65.0
Other Europe	31.5	5.7	37.2	*	39.2	28.7	*	57.7
Total Europe	323.5	53.6	377.1	24.1	401.2	261.2	6.0	60.6
New Zealand	17.7	*	19.2	*	20.5	5.1	*	80.0
Total Oceania	20.0	*	22.6	*	25.0	5.5	*	81.9
Main English-speaking countries (b)	147.3	30.1	177.4	10.2	187.6	96.2	5.4	66.1
Other	285.3	40.3	325.6	31.1	356.7	240.3	8.7	59.8
Period of arrival -								
Before 1961	134.4	26.6	161.0	9.9	171.0	165.1	5.8	50.9
1961 to 1965	59.7	8.2	68.0	5.1	73.1	33.2	6.9	68.8
1966 to 1970	91.4	11.3	102.7	6.5	109.2	47.4	5.9	69.7
1971 to 1975	58.6	9.3	67.9	4.5	72.3	32.0	6.2	69.3
1976 to 1980	45.8	7.7	53.5	4.4	57.9	21.9	7.6	72.5
1981 to survey date	42.7	7.2	50.0	10.9	60.9	36.9	18.0	62.3
Total overseas born	432.6	70.4	503.0	41.3	544.3	336.5	7.6	61.8

(a) Because it is not practicable to ascertain the birthplace of persons in institutions (who are classified as 'not in the labour force'), labour force participation rates for persons classified by birthplace are calculated by using population estimates which exclude those in institutions.

(b) Comprises United Kingdom and Ireland, Canada, United States of America, South Africa, and New Zealand.

TABLE 4. CIVILIAN POPULATION AGED 15 YEARS AND OVER BY LABOUR FORCE STATUS AND FAMILY STATUS, VICTORIA, MARCH 1986

Family status	Employed				Labour force ('000)	Not in labour force ('000)	Civilian population 15 years and over ('000)	Unemployment rate (per cent)	Participation rate (per cent)
	Full-time ('000)	Part-time ('000)	Total ('000)	Unemployed ('000)					
Member of a family -									
Married -									
Husband -									
With children (a)	402.4	6.8	409.3	10.6	419.9	15.5	435.4	2.5	96.4
Without children (a)	288.9	18.5	307.4	7.4	314.8	177.9	492.7	2.3	63.9
Wife -									
With children (a)	96.5	122.8	219.3	19.3	238.6	190.9	429.5	8.1	55.6
Without children (a)	134.1	71.5	205.6	8.8	214.4	278.2	492.6	4.1	43.5
Not-married family head -									
Male -									
With children (a)	4.4	*	4.9	*	5.1	*	6.2	*	82.1
Without children (a)	11.5	*	12.3	*	13.0	8.1	21.1	*	61.7
Female -									
With children (a)	9.0	9.0	18.0	*	21.0	31.9	52.8	*	39.7
Without children (a)	16.6	5.2	21.8	*	23.5	47.2	70.7	*	33.2
Child of family head (b) -									
Males									
	169.0	34.1	203.1	30.9	234.0	83.0	317.0	13.2	73.8
Females									
	107.9	37.7	145.5	22.8	168.3	71.7	240.0	13.5	70.1
Other relative of family head -									
	22.7	*	25.9	*	29.7	37.2	66.9	*	44.4
Total	1,263.0	310.1	1,573.1	109.2	1,682.3	942.6	2,624.9	6.5	64.1
Not a member of a family -									
Living alone -									
Males									
	63.9	*	67.4	6.9	74.2	36.9	111.1	9.3	66.8
Females									
	31.6	10.3	41.9	*	44.1	108.5	152.6	*	28.9
Not living alone -									
Males									
	55.4	6.6	62.0	8.7	70.7	10.3	81.0	12.3	87.2
Females									
	44.0	5.4	49.4	*	52.9	10.4	63.3	*	83.6
Total	194.8	25.9	220.6	21.3	241.9	166.1	408.1	8.8	59.3
Not family coded									
	55.6	11.5	67.1	9.9	76.9	88.7	165.7	12.8	46.4
Total	1,513.3	347.5	1,860.8	140.4	2,001.2	1,197.4	3,198.6	7.0	62.6

(a) Aged 0-14 present in household. (b) Aged 15 and over.

TABLE 5. EMPLOYED PERSONS, FULL-TIME AND PART-TIME STATUS BY AGE AND MARITAL STATUS, VICTORIA,
MARCH 1986
(*000)

Marital status	Age group (years)								Total
	15-19	20-24	25-34	35-44	45-54	55-59	60-64	65 and over	
EMPLOYED FULL-TIME									
Males -									
Married	*	24.5	202.7	223.2	155.9	60.9	31.9	8.8	708.3
Other	58.4	109.6	92.2	38.0	21.3	9.7	4.0	*	335.5
Total	58.8	134.1	294.9	261.2	177.1	70.6	35.9	11.1	1,043.7
Females -									
Married	*	28.8	74.1	75.6	45.0	10.5	*	*	239.7
Other	52.3	75.7	52.0	22.0	17.4	7.4	*	*	229.9
Total	53.7	104.5	126.1	97.6	62.5	17.9	5.4	*	469.6
Persons -									
Married	*	53.3	276.8	298.8	200.9	71.4	35.5	9.5	948.0
Other	110.7	185.2	144.2	60.0	38.7	17.1	5.8	*	565.4
Total	112.5	238.6	421.0	358.8	239.6	88.5	41.3	13.0	1,513.3
EMPLOYED PART-TIME									
Males -									
Married	*	*	*	*	4.6	*	4.7	5.4	26.1
Other	26.9	11.3	4.2	*	*	*	*	*	49.0
Total	26.9	12.0	7.2	6.2	5.6	4.6	6.1	6.5	75.0
Females -									
Married	*	11.3	60.8	71.5	34.4	13.9	4.4	*	200.8
Other	29.9	12.0	8.5	9.1	7.0	*	*	*	71.7
Total	30.5	23.3	69.3	80.6	41.4	16.1	5.6	5.5	272.4
Persons -									
Married	*	12.0	63.8	75.5	38.9	17.6	9.2	9.2	226.8
Other	56.8	23.3	12.8	11.3	8.1	*	*	*	120.6
Total	57.4	35.4	76.5	86.7	47.0	20.7	11.6	12.0	347.5
TOTAL EMPLOYED									
Males -									
Married	*	25.2	205.6	227.2	160.4	64.7	36.6	14.2	734.4
Other	85.2	120.9	96.5	40.2	22.4	10.5	5.4	*	384.4
Total	85.7	146.1	302.1	267.4	182.8	75.2	42.0	17.6	1,118.8
Females -									
Married	*	40.2	134.9	147.1	79.4	24.4	8.0	4.4	440.4
Other	82.2	87.6	60.5	31.1	24.4	9.7	*	*	301.6
Total	84.2	127.8	195.5	178.1	103.9	34.1	11.0	7.5	742.0
Persons -									
Married	*	65.4	340.6	374.2	239.8	89.1	44.6	18.6	1,174.8
Other	167.5	208.5	157.0	71.3	46.8	20.2	8.3	6.4	686.0
Total	169.9	273.9	497.6	445.5	286.7	109.3	52.9	25.0	1,860.8

TABLE 6. EMPLOYED PERSONS BY HOURS WORKED, VICTORIA, MARCH 1986

Weekly hours worked	Number employed ('000)					Percentage distribution				
	Females					Females				
	Males	Married	Other	Total	Persons	Males	Married	Other	Total	Persons
0(a)	57.3	27.5	15.0	42.5	99.7	5.1	6.2	5.0	5.7	5.4
1-15	42.2	92.4	44.1	136.5	178.7	3.8	21.0	14.6	18.4	9.6
16-29	75.4	96.0	37.3	133.3	208.8	6.7	21.8	12.4	18.0	11.2
30-34	187.8	69.2	62.7	131.8	319.6	16.8	15.7	20.8	17.8	17.2
35-39	187.3	56.0	59.4	115.4	302.7	16.7	12.7	19.7	15.6	16.3
40	198.3	45.2	43.4	88.6	286.9	17.7	10.3	14.4	11.9	15.4
41-44	63.2	13.5	10.3	23.8	87.0	5.7	3.1	3.4	3.2	4.7
45-48	82.3	11.4	10.7	22.1	104.5	7.4	2.6	3.5	3.0	5.6
49-59	106.3	11.5	13.4	24.8	131.1	9.5	2.6	4.4	3.3	7.0
60 and over	118.7	17.7	*	23.1	141.8	10.6	4.0	*	3.1	7.6
Total	1,118.8	440.4	301.6	742.0	1,860.8	100.0	100.0	100.0	100.0	100.0

AVERAGE WEEKLY HOURS WORKED (b)

Full-time workers	40.6	37.6	35.7	36.7	39.4	**	**	**	**	**
Part-time workers	15.3	14.8	12.9	14.3	14.5	**	**	**	**	**
All employed persons	38.9	27.2	30.3	28.5	34.7	**	**	**	**	**

(a) Persons who had a job from which they were absent for the whole of the survey week. Excludes persons laid off without pay for the whole of the survey week, who are classified as unemployed.

(b) For information regarding the calculation of standard errors, refer to Information Paper: Victorian Labour Force Statistics (6262.2), Section 4.5.

TABLE 7. UNEMPLOYED PERSONS BY AGE AND WHETHER LOOKING FOR FULL-TIME OR PART-TIME WORK, VICTORIA, MARCH 1986

Particulars	Number ('000)			Unemployment rate (per cent)		
	Males	Females	Persons	Males	Females	Persons
15-19 = 15-17	12.6	11.1	23.7	23.6	21.8	22.7
18-19	9.4	10.1	19.5	17.4	18.5	17.9
Looking for first job	14.6	11.2	25.8	**	**	**
Not looking for first job	7.4	10.0	17.4	**	**	**
Attending school	7.2	5.8	13.0	31.5	25.1	28.3
Not attending school -						
Left before 1984	5.1	*	9.0	17.6	*	17.3
Left from 1984 to survey date	9.8	11.4	21.2	17.4	19.4	18.4
Total aged 15-19 years	22.0	21.2	43.2	20.5	20.1	20.3
20-24	14.1	10.3	24.4	8.8	7.4	8.2
25-34	14.0	16.9	31.0	4.4	8.0	5.9
35-44	8.2	14.7	22.9	3.0	7.6	4.9
45-54	7.0	4.5	11.5	3.7	4.1	3.9
55 and over	5.8	*	7.4	4.2	*	3.8
Looking for - Full-time work	58.4	39.0	97.4	5.3	7.7	6.0
- Part-time work	12.9	30.1	43.0	14.7	10.0	11.0
Total unemployed	71.3	69.1	140.4	6.0	8.5	7.0

TABLE 8. UNEMPLOYED PERSONS BY DURATION OF UNEMPLOYMENT (a), VICTORIA, MARCH 1986

Particulars	Number ('000)			Percentage distribution		
	Males	Females	Persons	Males	Females	Persons
Duration of unemployment (weeks) -						
Under 2	5.3	8.7	14.0	7.5	12.5	10.0
2 and under 4	5.6	8.9	14.5	7.9	12.9	10.4
4 and under 8	9.7	12.0	21.8	13.6	17.4	15.5
8 and under 13	10.1	10.5	20.6	14.2	15.2	14.7
13 and under 26	9.7	10.0	19.8	13.7	14.5	14.1
26 and under 52	9.8	7.6	17.4	13.7	11.0	12.4
52 and under 104	7.9	6.1	14.0	11.0	8.8	9.9
104 and over	13.1	5.3	18.4	18.3	7.7	13.1
Age (years) -						
15-19 -						
Under 13 weeks	12.4	11.8	24.2	17.4	17.1	17.3
13 weeks and under 52	5.9	7.4	13.3	8.3	10.7	9.5
52 weeks and over	*	*	5.6	*	*	4.0
Total	22.0	21.2	43.2	30.9	30.6	30.8
20-24 -						
Under 13 weeks	7.4	5.7	13.1	10.4	8.2	9.3
13 weeks and under 52	*	*	5.8	*	*	4.1
52 weeks and over	*	*	5.5	*	*	3.9
Total	14.1	10.3	24.4	19.8	14.9	17.4
25 and over -						
Under 13 weeks	11.0	22.6	33.6	15.4	32.7	23.9
13 weeks and under 52	9.7	8.4	18.0	13.6	12.1	12.8
52 weeks and over	14.5	6.7	21.2	20.3	9.7	15.1
Total	35.1	37.7	72.8	49.3	54.5	51.8
Total	71.3	69.1	140.4	100.0	100.0	109.0
DURATION OF UNEMPLOYMENT (WEEKS)						
Average (mean) duration -						
Aged 15-19 years	26.8	18.2	22.6	**	**	**
Aged 20-24 years	33.1	31.9	32.6	**	**	**
Aged 25 years and over	66.9	26.4	45.9	**	**	**
All ages	47.8	24.7	36.4	**	**	**
Median duration (b) -						
Aged 15-19 years	11.0	9.0	10.0	**	**	**
Aged 20-24 years	10.0	*	10.0	**	**	**
Aged 25 years and over	32.0	8.0	13.0	**	**	**
All ages	16.0	9.0	12.0	**	**	**

(a) Period from the time a person began looking for work, or was laid off to the end of the survey week. Periods of unemployment are recorded in complete weeks resulting in a slight understatement of duration of unemployment. (b) For information regarding the calculation of standard errors, refer to Information Paper: Victorian Labour Force Statistics (6262.2), Section 4.5

TABLE A. STANDARD ERRORS OF ESTIMATES, VICTORIA
('000)

Size of estimate	4.0	4.5	5.0	6.0	10.0	20.0	50.0	100.0	200.0	300.0	500.0	1,000.0	2,000.0
Standard error	1.0	1.0	1.1	1.2	1.5	2.0	2.9	3.7	4.8	5.5	6.5	8.1	9.9

TABLE B. STANDARD ERRORS OF ESTIMATES OF MONTH TO MONTH MOVEMENTS, VICTORIA
('000)

Size of larger estimate	4.0	4.5	5.0	6.0	10.0	20.0	50.0	100.0	200.0	300.0	500.0	1,000.0	2,000.0
Standard error	0.9	1.0	1.0	1.1	1.3	1.6	2.3	2.9	3.7	4.2	5.1	6.5	8.3