

# GEOLOGY OF THE PEELWOOD AREA

MAP SHEET 1



ERA PERIOD	Subsidiary zone	GROUP or FORMATION
Quaternary	Tb	Olivine basalts
LOWER DEVONIAN	Sks	Sks: <u>CAPEBELLS and CLONMELLY GROUP</u> flysch-like sediments, greywackes, buffaceous shale, marls, minor tuff & limestone
	Skp	Sks: Blue-grey chloritic shales
UPPER SILURIAN	Skl	Skl: Grey and white banded marble
	Skg	Skg: Tuffaceous shales and greywackes
MIDDLE SILURIAN	Sks	Sks: Thin, black carbonaceous shale
	Skr	Skr: Pink-white, cherty "exhalite"
	Sks	quartz veins and dykes
LOWER SILURIAN	Skw	Skw: Reworked tuffs, shaly tuff
	Skt	Skt: quartz-feldspar porphyritic tuff
LOWER SILURIAN	Sks	Sks: <u>KAWIAPOOIA VOLCANICS</u> Schistose quartz-porphyr, rhyolitic and dacitic tuff Skm: Minor shale & greywacke

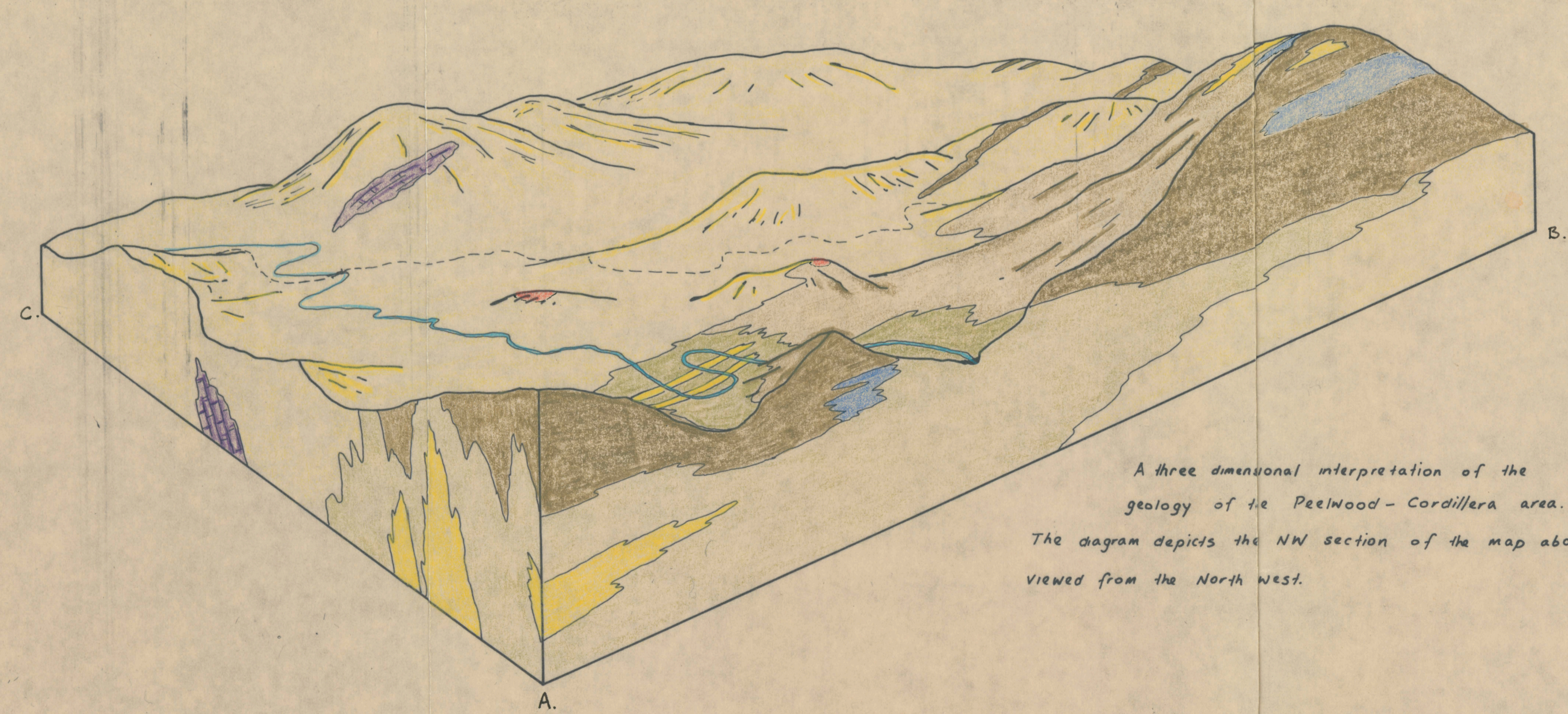
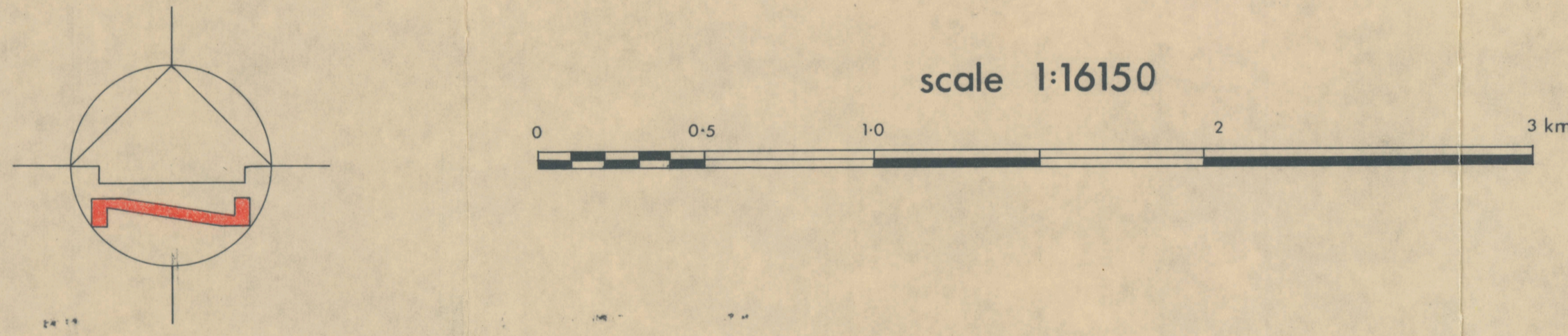
Note: This column is not intended to depict intimate stratigraphic relations, but simply to show the spatial relations between sub-units.

**GEOLOGICAL SYMBOLS USED**

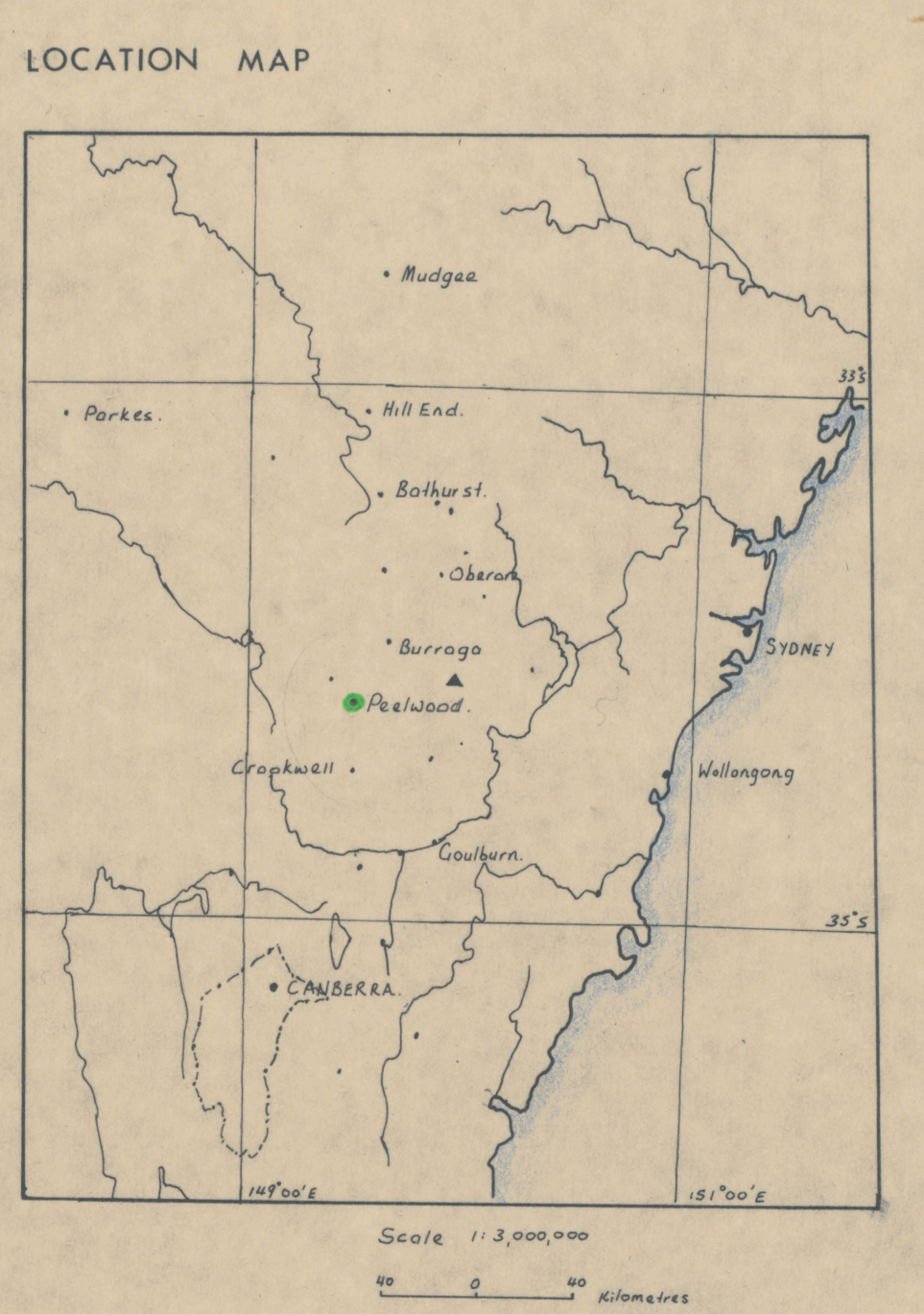
- Geological boundary, position accurate
- Geological boundary, position approximate
- Geological boundary, position inferred
- Shear zone
- Sedimentary facies change symbol
- Outcrop, in an area of discontinuous, scattered outcrop
- Other outcrops not closely examined, too small to be shown.
- Strike and dip of foliation
- Vertical foliation
- Structural facing or "younging" direction
- Fault, position accurate
- Fault, probable or inferred
- Fossil locality

**TOPOGRAPHICAL AND CULTURAL FEATURES**

- Principal road, all weather loose surface
- Secondary road; vehicular track
- Building or homestead
- Spot height, elevation in metres a.s.l.
- Mine
- River or stream
- Intermittent stream



A three dimensional interpretation of the geology of the Peelwood-Cordillera area. The diagram depicts the NW section of the map above, viewed from the North West.



Ray Nelson  
1979