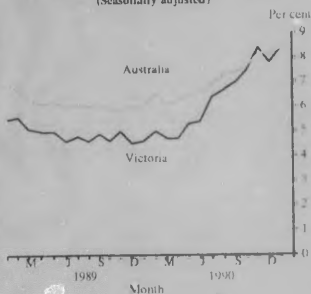


**ECONOMIC INDICATORS, VICTORIA
FEBRUARY 1991**

INQUIRIES Inquiries concerning these statistics may be made by telephoning Information Services on Melbourne (03) 615 7000; for advice on the interpretation of these statistics, ask for Mr Jim Drummond.

MAIN FEATURES

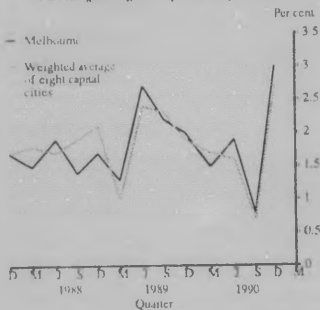
**UNEMPLOYMENT RATE OF THE CIVILIAN
POPULATION AGED 15 YEARS AND OVER**
(Seasonally adjusted)



Unemployment rate

Victoria's unemployment rate (seasonally adjusted) was 8.4 per cent in January 1991. This figure represented an increase of 0.6 percentage points over the December 1990 rate of 7.8 per cent, and an increase of 3.8 percentage points since January 1990. At the national level, the unemployment rate was 8.4 per cent in January 1991, an increase of 0.3 percentage points over December 1990 and 2.3 percentage points over January 1990.

CONSUMER PRICE INDEX: ALL GROUPS
Percentage change from previous quarter



Consumer Price Index

The consumer price index for Melbourne increased by 3.0 per cent between the September and December quarters 1990, and by 7.4 per cent since the December quarter 1989. At the national level, the corresponding increases were 2.7 per cent and 6.9 per cent respectively. The quarterly and annual rates of increase for December quarter 1990 rose significantly over the September quarter rates for both Melbourne and Australia.

TABLE 1. VICTORIA IN RELATION TO OTHER STATES AND AUSTRALIA (a)

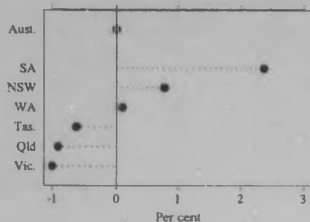
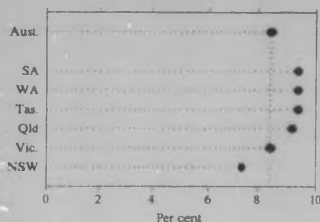
Indicator	Reference period	N.S.W.	Vic.	Qld	S.A.	W.A.	Tas.	Aust.(b)	Victoria	
									as a percentage of Australia	
Employed persons	'000	Dec 90	2,674.6	2,075.2	1,325.8	674.2	770.5	201.2	7,941.2	26.1
*Unemployment rate										
- seasonally adjusted	per cent	Jan 91	7.4	8.4	9.1	9.3	9.3	9.9	8.4	
Average weekly total earnings										
- all employees (c)	\$	Aug qr 90	492.00	478.10	440.60	455.20	465.10	448.80	474.80	
Consumer price index, all groups (c)	1980 81=100	Dec qr 90	214.2	217.0	210.1	215.1	214.3	209.2	214.5	
*New dwelling units approved	no.	Dec 90	2,578	1,505	2,027	899	947	257	8,438	28
Value of all buildings approved	\$m	Dec 90	522.7	269.7	271.6	136.3	100.1	28.2	1,370.5	38.3
Engineering construction										
- commenced, total	\$m	Sep qr 90	1,218.4	586.8	747.1	199.1	370.5	46.2	3,269.3	37.9
- yet to be done, total	\$m	Sep qr 90	1,775.7	820.2	1,473.1	308.5	466.3	246.5	5,197.6	35.8
Housing finance for owner occupation	\$m	Dec 90	579.2	329.2	242.4	128.3	117.4	23.2	1,462.4	39.5
*Retail turnover - trend estimates	\$m	Dec 90	2,553.3	1,727.7	1,225.9	591.5	627.7	180.1	7,106.9	24.3
New motor vehicle registrations										
- seasonally adjusted	no.	Nov 90	18,350	10,337	8,259	3,397	4,092		46,919	22.0
Takings, licensed hotels, motels and guest houses with facilities	\$'000	Jun qr 90	205,934	92,183	116,417	30,667	40,595	12,675	530,481	17.4
Exports (excluding re-exports)	\$m	Oct 90	1,245.5	685.2	1,086.6	202.8	907.0	122.0	4,297.6	15.9
Imports	\$m	Dec 90	1,729.5	1,096.2	802.7	166.3	520.9	22.1	3,791.3	28.9
*Industrial disputes										
- working days lost per '000 employees	no.	Oct 90	247	205	101	218	183	64	154	
Electricity production	million kWh	Dec 90	4,383	3,326	2,368		1,192	715	12,684	26.2
*Actual private new capital expenditure										
- seasonally adjusted	\$m	Sep qr 90	2,664	1,790	1,033	447	1,064	177	7,397	24.2

CHANGE OVER SAME PERIOD PREVIOUS YEAR (PER CENT)

*Employed persons	'000	Dec 90	0.8	-1.0	-0.9	2.4	0.1	-0.6	0.0
Unemployment rate									
- seasonally adjusted	per cent	n.a.							
Average weekly total earnings									
- all employees (c)	\$	Aug qr 90	5.8	5.6	8.4	7.9	6.6	5.7	6.3
Consumer price index, all groups (c)	1980 81=100	Dec qr 90	6.4	7.4	6.2	7.8	7.1	6.1	6.9
New dwelling units approved	no.	Dec 90	4.0	-32.7	-12.0	-2.4	-27.5	32.5	-12.1
Value of all buildings approved	\$m	Dec 90	-7.2	-39.0	-6.1	28.8	-29.4	33.0	-15.5
Engineering construction									
- commenced, total	\$m	Sep qr 90	12.8	14.6	5.3	30.3	-6.2	-4.1	9.7
- yet to be done, total	\$m	Sep qr 90	18.0	6.2	48.1	12.6	14.5	7.4	20.5
Housing finance for owner occupation	\$m	Dec 90	36.2	1.1	9.8	33.5	-3.6	5.9	17.3
Retail turnover - trend estimates	\$m	Dec 90	3.6	-3.2	4.4	8.8	2.1	4.8	2.4
New motor vehicle registrations									
- seasonally adjusted	no.	Nov 90	-5.2	-30.5	-2.3	0.8	-13.0		-9.1
Takings, licensed hotels, motels and guest houses with facilities	\$'000	Jun qr 90	9.1	6.2	10.1	16.6	2.5	1.6	9.0
Exports (excluding re-exports)	\$m	Oct 90	20.3	6.6	0.8	22.3	11.4	21.5	9.2
Imports	\$m	Dec 90	11.8	-1.0	20.5	38.2	4.3	-12.6	8.2
Industrial disputes									
- working days lost per '000 employees	no.	Oct 90	-15.7	6.8	-15.8	251.6	-24.7	1.6	-4.9
Electricity production	million kWh	Dec 90	14.3	2.3	7.1		6.3	0.6	5.9
Actual private new capital expenditure									
- seasonally adjusted	\$m	Sep qr 90	-0.5	-7.4	7.9	18.3	-15.9	78.8	-0.2

(a) All figures are original unless otherwise stated. (b) The Australian total includes figures for N.T. and the A.C.T. (c) Available only for the middle month of the quarter. * An asterisk before a statistical series denotes that a corresponding figure is included in the relevant section.

VICTORIA IN RELATION TO OTHER STATES AND AUSTRALIA

EMPLOYED PERSONSChange over the same period previous year
December 1990**UNEMPLOYMENT RATE**Seasonally adjusted
January 1991**NEW DWELLING UNITS APPROVED**

December 1990

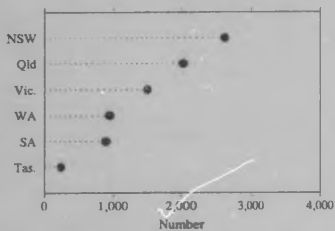
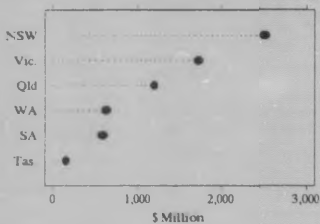
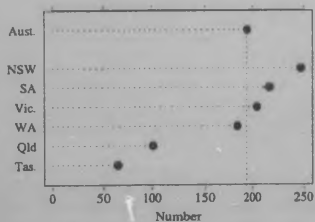
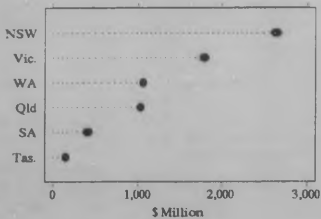
**RETAIL TURNOVER**Trend estimates
December 1990**INDUSTRIAL DISPUTES**Working days lost per '000 employees
October 1990**PRIVATE NEW CAPITAL EXPENDITURE**Seasonally adjusted
September quarter 1990

TABLE 2. ECONOMIC INDICATORS, VICTORIA AND AUSTRALIA

Indicator	Victoria					Australia			Victoria as a % of Australia	Source index (a)
	Reference period	Figures		% Change	Over same period previous year	Figures	% Change	Over preceding period		
		Latest period	Preceding period							
Population										
Estimated resident population '000	Jun qr 90	4,380.0	4,366.0	0.3	1.4	17,086.2	0.3	25.6	1	
Civilian population aged 15 years and over '000	Jan 91	3,457.0	3,453.3	0.1	1.6	13,395.1	0.1	25.8	2	
Labour force										
Labour force										
- original series '000	Jan 91	2,202.3	2,257.4	-2.4	2.0	8,436.4	-2.4	26.1	2	
- seasonally adjusted '000	Jan 91	2,241.7	2,218.5	0.6	1.6	8,541.6	0.0	26.1	2	
- trend estimate '000	Jan 91	2,229.6	2,231.5	0.1	1.9	8,538.0	0.0	26.1	2	
Participation rate: seasonally adjusted	per cent	Jan 91	64.6	64.2	-	63.8	-	-	2	
*Unemployment rate										
- original series	per cent	Jan 91	9.0	8.1	-	9.1	-	-	2	
- seasonally adjusted	per cent	Jan 91	8.4	7.8	-	8.4	-	-	2	
- trend estimate	per cent	Jan 91	8.3	8.1	-	8.3	-	-	2	
Employed persons by industry (e)										
Agriculture, forestry, fishing, etc./b/ '000	Nov qr 90	119.2	96.9	23.0	2.3	520.8	22.6	22.9	13, 14	
Manufacturing '000	Nov qr 90	377.0	392.8	-4.0	-5.6	1188.1	-1.0	31.7	13, 14	
Construction '000	Nov qr 90	142.9	149.9	-4.7	-11.2	585.2	(0)	24.4	13, 14	
Wholesale and retail '000	Nov qr 90	437.9	429.4	2.2	4.0	1633.2	1.5	26.8	13, 14	
Transport and storage '000	Nov qr 90	92.4	87.8	5.2	-7.8	393.4	-2.2	23.8	13, 14	
Finance, property and business services '000	Nov qr 90	239.7	239.5	0.1	0.0	893.6	1.2	26.8	13, 14	
Community services (c) '000	Nov qr 90	363.1	376.1	-3.5	3.4	1411.4	-0.8	23.7	13, 14	
Recreational, personal and other services '000	Nov qr 90	120.6	130.2	-7.4	8.1	578.2	3.0	20.9	13, 14	
Other industries (d) '000	Nov qr 90	163.7	171.5	-4.5	4.2	616.1	-13.5	26.6	13, 14	
Total all industries '000	Nov qr 90	2,056.4	2,073.1	0.8	-1.0	7,849.9	0.3	26.2	13, 14	
Job vacancies (e) - original series										
'000	Nov qr 90	4.4	10.5	-58.1	-74.4	34.1	-29.1	12.9	3	
Overtime (e)										
Average weekly hours per employee	hours	Nov qr 90	1.41	1.24	13.7	-25.4	1.34	9.8	3	
Employees working overtime	per cent	Nov qr 90	19.13	17.26	10.8	-10.5	17.98	3.8	3	
Average weekly employee earnings (e)										
Full-time adult - total \$	Aug qr 90	544.10	536.20	1.5	7.0	541.00	1.3	-	4	
All employees - total \$	Aug qr 90	478.10	476.20	0.4	5.6	474.80	1.0	-	4	
Award rates of pay										
Full-time adult employees	June 85=100	Dec 90	133.5	133.3	0.2	4.8	131.7	0.1	5	
Industrial disputes										
Working days lost per '000 employees	no.	Oct 90	205	189	8.5	6.8	194	18.3	6	
*Consumer price index (e)										
All groups	1980-81=100	Dec qr 90	217.0	210.7	3.0	7.4	214.5	2.7	7	
*Retail trade establishments										
Value of turnover										
- original series \$m	Dec 90	2,346.6	1,806.7	29.9	-5.9	9,395.1	25.7	25.0	8	
- trend estimate \$m	Dec 90	1,727.7	1,728.9	-0.1	-3.2	7,109.9	-0.2	24.3	8	
- seasonally adjusted (1984-85 prices) \$m	Dec qr 90	3,497.9	3,568.6	-2.0	-6.8	14,619.5	-1.6	23.9	8	
*Overseas trade										
Imports \$m	Dec 90	1,096.2	1,291.5	-15.1	-1.0	3,791.3	15.2	28.9	9	
Exports (exclude re-exports) \$m	Oct 90	685.2	653.2	4.9	6.6	4,297.6	8.6	15.9	10	
Tourism										
Caravan parks - takings										
Licensed hotels, motels and guest houses with facilities	\$'000	Jun qr 90	13,341	19,915	-33.0	27.7	82,570	-13.1	16.2	23
- Takings										
- Room occupancy rate	\$'000	Jun qr 90	92,183	99,166	-7.0	6.2	530,481	-4.8	17.4	23
	per cent	Jun qr 90	49.8	56.6	-	-	50.1	-	23	

See footnotes at end of table.

TABLE 2. ECONOMIC INDICATORS, VICTORIA AND AUSTRALIA - (continued)

Indicator		Reference period	Victoria				Australia		Victoria as a % of Australia	Source index (a)
			Figures		% Change		Figures	% Change		
			Latest period	Preceding period	Over same preceding period	Over same previous year	Latest period	Over preceding period		
*New motor vehicle registrations -										
New motor vehicle registrations										
- original series	no.	Nov 90	10,543	13,310	20.8	20.8	47,484	-11.3	22.2	11
- seasonally adjusted	no.	Nov 90	10,337	12,610	-18.0	-20.5	46,919	-7.7	22.0	11
- trend estimate	no.	Nov 90	10,780	11,432	-5.7	-18.7	48,629	-1.3	22.2	11
Cars and station wagons										
- original series	no.	Nov 90	9,060	10,945	-17.2	-19.8	37,246	-11.1	24.3	11, 12
- seasonally adjusted	no.	Nov 90	8,705	10,629	-18.1	-19.4	36,698	-8.1	23.7	11, 12
Other motor vehicles (excludes motor cycles)										
- original series	no.	Nov 90	1,483	2,365	-37.3	-26.3	10,238	-12.1	14.5	11, 12
- seasonally adjusted	no.	Nov 90	1,631	1,981	-17.7	-25.7	10,221	-6.5	16.0	11, 12
Manufacturing -										
Actual private new capital expenditure										
- original series	\$m	Sep qr 90	557	695	19.9	14.0	1,808	23.5	30.8	15, 16
Production -										
Whole milk	million litres	Oct 90	552	432	27.8	1.8	804	22.2	68.7	17, 18
Butter	tonnes	Nov 90	13,894	14,843	-6.4	-2.5	15,423	-6.3	90.1	19
Cheese (incl. cheddar and non-cheddar)	tonnes	Nov 90	11,424	11,724	-2.8	-8.4	20,090	-7.0	56.9	19
Yarns										
- Cotton	tonnes	Nov 90	788	1,065	-26.0	24.7	1,984	-21.0	39.7	17, 18
- Woollen	tonnes	Nov 90	1,327	1,401	-5.3	-16.1	1,808	-2.5	73.5	17, 18
Woven fabric										
- Cotton	'000 sq m	Nov 90	1,104	1,500	-26.4	41.1	2,971	-14.4	37.2	17, 18
- Woollen (includes worsted wool)	'000 sq m	Nov 90	180	159	13.2	21.4	756	0.3	23.8	17, 18
- Man-made fibres	'000 sq m	Nov 90	6,424	6,249	2.8	1.4	16,941	-6.4	37.9	17, 18
Textile floor coverings	'000 sq m	Nov 90	3,053	3,444	-12.6	14.5	3,813	-12.9	80.1	17, 18
Clay bricks	million	Nov 90	34	36	-8.6	12.8	157	-8.7	21.7	17, 18
Ready mixed concrete	'000 cu m	Dec 90	216	278	-22.3	36.3	1,035	-26.9	20.9	20
Paints and other surface coatings										
- Architectural and decorative paints	'000 litres	Dec 90	1,188	1,395	-14.8	41.1	7,675	-27.7	15.5	21
Electricity - production	million kWh	Dec 90	3,326	3,118	6.7	2.3	12,684	1.9	26.2	22
Gas - available for issue through mains	million Mj	Dec 90	10,917	14,231	-23.3	22.9	36,147	-13.9	30.2	22
*Actual private new capital expenditure -										
Building and structures - original series										
Equipment, plant and machinery	\$m	Sep qr 90	657	719	-8.6	10.4	2,809	7.5	23.4	15
- original series	\$m	Sep qr 90	1,066	1,167	-8.7	11.3	4,269	-8.3	25.0	15
Total new capital expenditure										
- original series	\$m	Sep qr 90	1,723	1,886	8.6	-11.0	7,078	-2.6	24.3	15
- seasonally adjusted	\$m	Sep qr 90	1,790	1,802	-0.7	-10.9	7,397	6.7	24.2	15
*Housing finance for owner occupation -										
Secured loans to individuals by type of lender										
All Banks										
- number of dwelling units financed	no.	Dec 90	3,863	4,793	-19.4	0.2	14,241	-20.3	27.1	24
- value of loans secured	\$m	Dec 90	278.1	351.9	-21.0	-0.7	1,039.1	-19.5	26.8	24
Total number of dwelling units financed	no.	Dec 90	4,667	5,519	-15.4	5.1	19,943	-18.9	23.4	24
Total value of loans secured (f)	\$m	Dec 90	329.2	398.1	-17.3	1.1	1,462.4	-17.7	22.5	24
Loan purpose (g)										
- Established dwellings	\$m	Dec 90	243.9	285.8	-14.7	3.1	1,065.3	-15.5	22.9	24
- Construction of dwellings	\$m	Dec 90	61.2	76.4	-19.9	-4.4	240.4	-25.2	25.5	24
- Newly erected dwellings	\$m	Dec 90	11.3	20.9	-45.9	-2.6	94.2	-22.1	12.0	24
Finance -										
Personal finance commitments - total	\$m	Nov 90	398.4	440.5	-9.6	-11.1	1,709.1	-4.0	23.3	30
Commercial finance commitments - total	\$m	Nov 90	1,932.9	2,366.5	-18.3	-2.8	6,481.3	-11.9	29.8	31
Lease finance commitments - total	\$m	Dec 90	298.4	103.1	189.4	34.5	696.5	53.1	42.8	32

See footnotes at end of table.

TABLE 2. ECONOMIC INDICATORS, VICTORIA AND AUSTRALIA - (continued)

Indicator	Victoria				Australia				Victoria as a % of Australia	Source index (a)	
	Reference period	Figures		% Change		Figures		% Change			
		Latest period	Preceding period	Over same period		Latest period	Preceding period	Over			
				preceding period	previous year			period			period
Building Approvals -											
*New residential dwelling units											
- original series	no.	Dec 90	1,505	2,357	-36.1	32.7	8,438	-29.1	17.8	25.26	
- seasonally adjusted	no.	Dec 90	1,661	2,252	-26.2	-33.4	9,798	-10.9	17.0	25.26	
- trend estimate	no.	Dec 90	1,918	1,958	-2.0	-22.2	10,332	-0.9	18.6	25.26	
Value of non-residential buildings											
- original series	\$m	Dec 90	103.5	272.5	-17.2	51.0	530.6	42.6	19.5	26	
Value of all buildings (f)											
- original series	\$m	Dec 90	269.7	501.4	-46.2	-39.0	1,370.5	32.9	19.7	26	
Building commencements -											
New residential dwelling units, monthly	no.	Nov 90	2,667	1,712	55.8	6.0	n.a.	n.a.		27	
New residential dwelling units, quarterly	no.	Sep qr 90	6,730	7,090	5.1	-20.1	31,810	3.6	21.2	28	
Building Activity -											
Value of total building activity											
- Commenced	\$m	Sep qr 90	1,183.0	1,763.0	52.9	-18.6	5,653.0	13.9	20.9	28	
- Done	\$m	Sep qr 90	1,904.9	2,038.2	6.5	-7.7	7,213.5	0.1	26.4	28	
- Yet to be done	\$m	Sep qr 90	3,187.3	3,623.3	-12.0	-17.6	12,633.1	6.9	25.2	28	
Engineering construction -											
Value of work by private sector											
- Commenced	\$m	Sep qr 90	167.1	217.9	23.2	39.2	1,244.3	3.3	13.4	29	
- Done	\$m	Sep qr 90	236.1	220.0	7.3	11.7	1,369.0	11.6	17.2	29	
- Yet to be done	\$m	Sep qr 90	473.8	536.8	11.7	-9.7	2,754.3	2.3	17.2	29	
Value of work by public sector											
- Commenced	\$m	Sep qr 90	419.7	468.4	10.4	17.8	2,025.0	44.1	20.7	29	
- Done	\$m	Sep qr 90	379.7	459.5	-17.4	9.8	1,485.0	-16.1	25.6	29	
- Yet to be done	\$m	Sep qr 90	346.4	225.1	53.9	76.0	2,443.3	43.9	14.2	29	

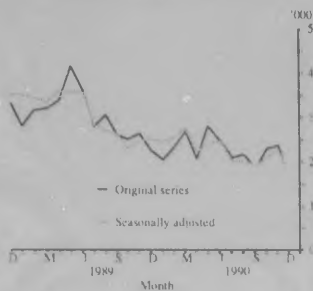
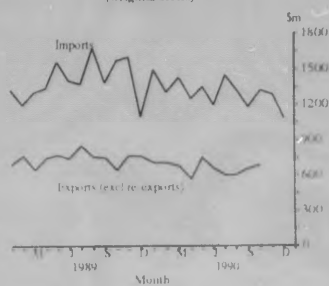
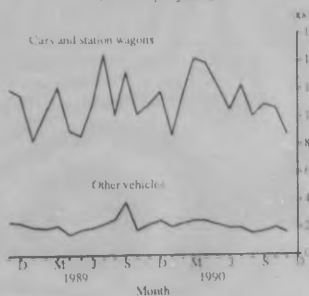
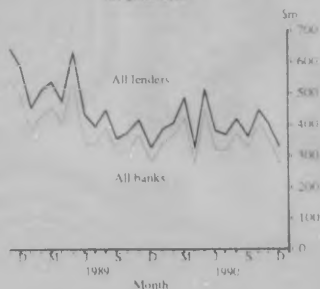
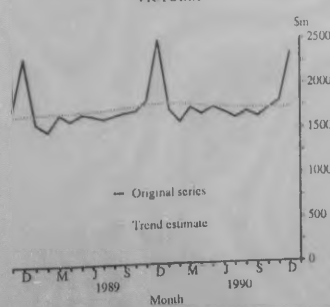
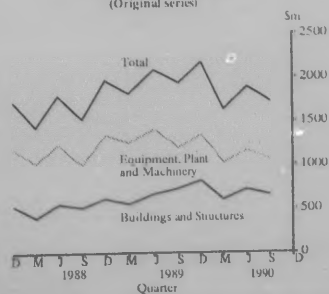
(a) For more information on these series, refer to the publications listed in the source index on page 6. (b) Includes hunting and mining. (c) Comprises health, education, libraries, etc., welfare and religious institutions, and other community groups. (d) Comprises electricity, gas and water, communications, public administration and defence. (e) Available only for the middle month of the quarter. (f) Includes, alterations and additions to residential buildings. (g) Excludes, alterations and additions to residential buildings.

* An asterisk before a statistical series denotes that a corresponding graph is included in the relevant section.

SOURCE INDEX

1. *Australian Demographic Statistics*, (3101.0) \$7.50
2. *The Labour Force, Australia, Preliminary*, (6202.0) \$8.00
3. *Job Vacancies and Overtures, Australia*, (6354.0) \$10.00
4. *Average Weekly Earnings, States & Australia*, (6302.0) \$8.00
5. *Award Rates of Pay Indexes, Australia*, (6312.0) \$8.00
6. *Industrial Disputes, Australia*, (6321.0) \$5.00
7. *Consumer Price Index*, (6401.0) \$8.00
8. *Retail Trade, Australia*, (8501.0) \$8.00
9. *Imports, Australia, Monthly Summary Tables*, (5433.0) \$7.50
10. *Exports, Australia, Monthly Summary Tables*, (5432.0) \$7.50
11. *Motor Vehicle Registrations, Australia*, (9303.0) \$8.00
12. *Motor Vehicle Registrations, Victoria*, (9303.2) \$5.00
13. *The Labour Force, Victoria*, (6202.2) \$12.00
14. *The Labour Force, Australia*, (6203.0) \$12.00
15. *State Estimates of Private New Capital Expenditure*, (5646.0) \$7.50
16. *Private New Capital Expenditure, Australia*, (5626.0) \$8.00
17. *Monthly Summary of Statistics, Victoria*, (1303.2) \$7.50
18. *Monthly Summary of Statistics, Australia*, (1304.0) \$16.00
19. *Prod. of Food, Drink and Tobacco, Australia*, (8359.0) \$8.00
20. *Prod. of Building Materials & Fittings, Australia*, (8361.0) \$5.00
21. *Prod. of Chemicals & By products, Australia*, (8362.0) \$5.00
22. *Prod. of Energy Products, Australia*, (8368.0) \$5.00
23. *Tourist Accommodation, Australia*, (8635.0) \$8.00
24. *Housing Finance for Owner Occupation, Australia*, (5609.0) \$7.50
25. *Building Approvals, Victoria*, (8731.2) \$8.00
26. *Building Approvals, Australia*, (8731.0) \$8.00
27. *Dwelling Unit Commencements Reported by Approving Authorities, Victoria*, (8741.2) \$7.50
28. *Building Activity, Australia*, (8752.0) \$11.50
29. *Engineering Construction, Australia*, (8762.0) \$7.50
30. *Personal Finance, Australia*, (5642.0) \$4.50
31. *Commercial Finance, Australia*, (5643.0) \$4.50
32. *Lease Finance, Australia*, (5644.0) \$4.50

ECONOMIC INDICATORS, VICTORIA

NUMBER OF NEW RESIDENTIAL DWELLING
UNITS APPROVED, VICTORIAVALUE OF IMPORTS INTO, AND EXPORTS FROM,
VICTORIAN PORTS
(Original series)NEW MOTOR VEHICLES REGISTERED,
VICTORIA
(Seasonally adjusted)SECURED HOUSING FINANCE COMMITMENTS
TO INDIVIDUALS, VICTORIA
(Original series)TURNOVER OF RETAIL ESTABLISHMENTS,
VICTORIAACTUAL PRIVATE NEW CAPITAL
EXPENDITURE, VICTORIA
(Original series)

Information and Statistical Consultancy

The Australian Bureau of Statistics is Australia's national statistical authority. It collects, compiles and disseminates information on a wide range of economic, social, and demographic topics for Australia, its States and Territories.

In addition to Dissemination of Statistical information through print and electronic media, the Bureau offers *Information and Statistical Consultancy Services* as a means of handling complex questions and projects involving the collection, use, or interpretation of statistics.

ABS consultants provide expert advice and accurate information to meet a wide variety of statistical needs - personally, quickly and professionally. Our consultants can help you in:

- Meeting your specialised information needs
- In-depth data investigations
- Collecting information
- Designing a survey
- Designing a sample
- Designing a survey questionnaire
- Processing data
- Analysing data
- Assessing tenders

Call our *Information and Statistical Consultancy staff* to see about the many ways we can help you. Our inquiry staff will be happy to answer any questions you may have about the service we provide.

Melbourne (03) 615 7000

Canberra (06) 252 6627

Electronic services

DISCOVERY Key *656# for selected current economic, social, and demographic statistics.

AUSSTATS Thousands of up-to-date time series are available on this ABS on-line service through CSIRONET.

TELESTATS This service provides foreign trade statistics tailored to the user's requirements.

Further information is available on (06) 252 5404

Floppy disk service

Selected ABS services are available on floppy disk. Further information is available on (06) 252 6884.

Recorded message services

DIAL-A-STATISTIC

This service has the latest Victorian and Australian figures on *Unemployment and Average Weekly Earnings*. Telephone (03) 615 7788.

CPI HOTLINE This service has the latest Consumer Price Index and movement data for Melbourne and Australia. Telephone (03) 615 7777.

Symbols and other usages

- n.a. not available
- n.y.a. not yet available
- p preliminary - figure or series subject to revision
- r figure or series revised since previous issue
- not applicable
- ~ nil or rounded to zero
- break in continuity of series (where a line is drawn between two consecutive figures in the same column, or alongside two or more figures in consecutive columns).

Where figures have been rounded, discrepancies may occur between sums of the component items and totals.

R.A. CROCKETT
Deputy Commonwealth Statistician

