



CENSUS OF MANUFACTURING ESTABLISHMENTS SUMMARY OF OPERATIONS (PRELIMINARY ESTIMATES) BY INDUSTRY SUBDIVISION, AUSTRALIA, 1982-83

- PHONE INQUIRIES** *for more information about these statistics*—contact Mr John van Dartel on Canberra (062) 52 5650 or any of our State offices.
other inquiries including copies of publications—contact Information Services on Canberra (062) 52 6627 or in any of our State offices.
- MAIL INQUIRIES** *write to* Information Services, ABS, P.O. Box 10, Belconnen, A.C.T. 2616 or any of our State offices.

MAIN FEATURES

Item	Changes between 1981-82 and 1982-83	
	No.	%
Persons employed(a)	-98,256	-8.5
	\$m	
Wages and salaries	+404	+2.4
Turnover	+562	+0.7
Closing stocks	-132	-1.0
Purchases, etc.	-87	-0.2
Value added	-194	-0.6
Fixed capital expenditure	-367	-9.0

(a) Average employment over whole year.

EXPLANATORY NOTES

Introduction

This publication presents statistics compiled from the census of manufacturing establishments, 1982-83. Data are shown for Australia and for each State and Territory.

2. The annual manufacturing census is conducted as a component of the ABS's integrated economic statistics system. This system has been developed so that data from each industry sector conform to the same basic conceptual standards thereby allowing comparative analysis between and across different industry sectors. The results of this census are therefore comparable with economic data collections undertaken annually for the mining, electricity and gas industries and periodically for the wholesale trade, retail trade and construction industries.

3. Manufacturing, as specified in Division C of the Australian Standard Industrial Classification (ASIC), broadly relates to the physical or chemical transformation of materials or components into new products, whether the work is performed by power-driven machines or by hand.

4. The period covered by the annual census is in general the twelve months ended 30 June. Where businesses find it impossible to supply information on this basis a substitute accounting period is used.

Scope

5. Data contained in this publication relate to all manufacturing establishments owned by multi-establishment enterprises and to single establishment manufacturing enterprises with four or more persons employed. Single establishment enterprises with fewer than four persons employed are excluded. As these small enterprises contribute only marginally to statistical aggregates other than number of establishments, this publication provides reliable information for the evaluation of trends in the manufacturing sector of the economy. However, year to year changes in number of establishments should be interpreted with care as they may reflect merely the movement of marginal small single establishment enterprises into or out of the scope of the statistics contained in this publication. The effects of such movements on any of the other statistical aggregates are insignificant.

6. In accordance with the Australian Standard Industrial Classification (ASIC) the basic census unit (referred to as the establishment) in respect of which statistics are collected in integrated economic censuses is in general a unit covering all the operations, carried on under the ownership of the enterprise at a single physical location. For manufacturing censuses, a *manufacturing establishment* is thus one predominantly engaged in manufacturing activities, but the data collected for it cover (subject to certain exceptions) all activities at the location including non-manufacturing activities.

7. The classification of census units to industry is based on the 1978 edition of the ASIC.

Related publications

8. For a more detailed account of census units, the classification used and definition of data items, see the Explanatory notes of *Manufacturing Establishments: Details of Operations, Australia, 1981-82* (8203.0). Detailed statistics of Australian manufacturing establishments will be contained in *Manufacturing Establishments: Summary of Operations, Australia, 1982-83* (8202.0) and *Manufacturing Establishments: Details of Operations, Australia 1982-83* (8203.0) to be issued shortly.

9. Current publications produced by the ABS are listed in the *Catalogue of Publications, Australia* (1101.0). The ABS also issues, on Tuesdays and Fridays, a *Publications Advice* (1105.0) which lists publications to be released in the next few days. The Catalogue and Publications Advice are available from any ABS office.

Symbols and other usages

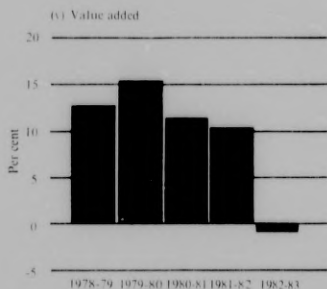
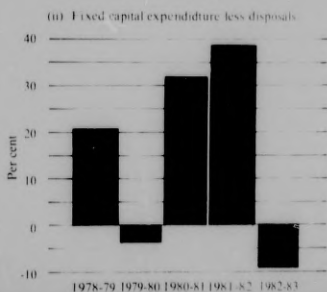
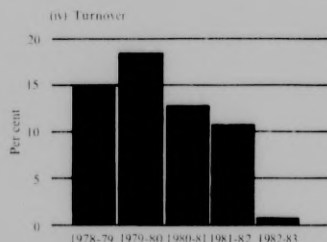
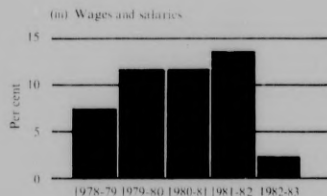
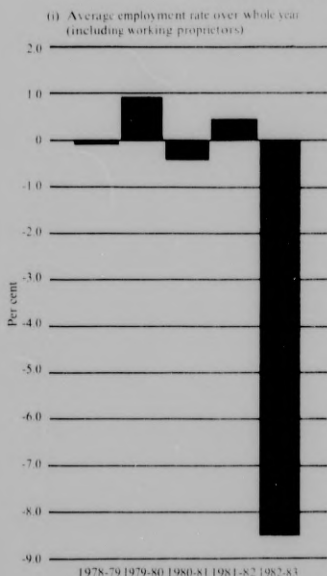
— nil or rounded to zero
 n.p. not available for publication but included in totals where applicable
 ASIC Australian Standard Industrial Classification

10. Where figures have been rounded discrepancies may occur between sums of the component items and totals.

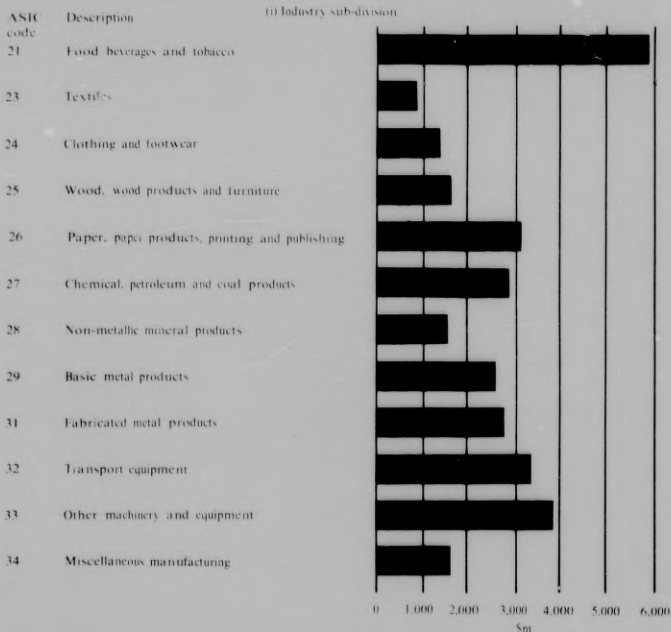
11. The figures shown in this publication for years prior to 1982-83 have been revised where necessary and as a consequence may not agree with similar data shown in previous publications.

R.J. CAMERON
 Australian Statistician

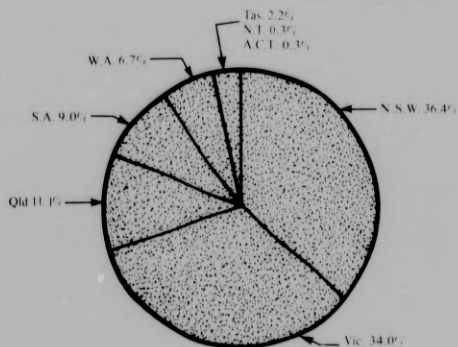
MANUFACTURING ESTABLISHMENTS: SELECTED ITEMS, PERCENTAGE INCREASE (+) OR DECREASE (-) OVER PREVIOUS YEAR, AUSTRALIA, 1978-79 TO 1982-83



MANUFACTURING ESTABLISHMENTS: VALUE ADDED, AUSTRALIA, 1982-83



(ii) States and territories



State	Value \$m
N.S.W.	11,347
Vic.	10,608
Qld.	3,473
S.A.	2,795
W.A.	2,076
Tas.	690
N.T.	98
A.C.T.	97
Australia	31,184

MANUFACTURING ESTABLISHMENTS(a): SUMMARY OF OPERATIONS, BY INDUSTRY SUBDIVISION, 1982-83

ASIC code	Industry subdivision Description	Establishments at 30 June(b) (no.)	Average employment over whole year(c)			Wages and salaries(d) (\$ m)	Turnover (\$ m)	Stocks		Purchases, transfers in and selected expenses (\$ m)	Value added (\$ m)	Fixed capital expend- iture less disposals (\$ m)
			Males (no.)	Females (no.)	Persons (no.)			Op-ning (\$ m)	Closing (\$ m)			
AUSTRALIA												
21	Food, beverages and tobacco	3,431	124,866	48,802	173,668	2,835	18,325	1,895	2,069	12,638	5,861	580
23	Textiles	632	18,946	13,271	32,217	505	2,146	393	373	1,323	803	57
24	Clothing and footwear	1,974	16,869	53,386	70,255	854	2,940	481	470	1,565	1,364	29
25	Wood, wood products and furniture	4,024	60,385	10,866	71,251	942	3,949	572	567	2,292	1,652	94
26	Paper, paper products, printing and publishing	2,919	70,893	29,326	100,219	1,700	6,465	772	757	3,389	3,060	196
27	Chemical, petroleum and coal products	936	43,737	14,736	58,473	1,146	8,106	1,325	1,465	5,409	2,836	347
28	Non-metallic mineral products	1,724	36,473	4,445	40,918	756	3,701	516	573	2,202	1,557	149
29	Basic metal products	552	77,635	6,495	84,130	1,699	9,526	2,070	1,955	6,864	2,547	1,458
31	Fabricated metal products	4,279	84,565	18,059	102,624	1,597	6,471	1,062	992	3,705	2,697	148
32	Transport equipment	1,305	106,910	13,906	120,816	2,132	8,055	1,356	1,428	4,801	3,326	300
33	Other machinery and equipment	3,794	108,826	33,720	142,546	2,334	8,761	2,029	1,926	4,773	3,886	226
34	Miscellaneous manufacturing	2,229	40,508	18,778	59,286	905	3,977	618	609	2,373	1,596	135
21-34	Total manufacturing—1982-83	27,799	790,613	265,790	1,056,403	17,405	82,423	13,087	13,183	51,334	31,184	3,717
	—1981-82	28,706	862,395	292,264	1,154,659	17,001	81,861	12,377	13,315	51,421	31,378	4,084
	—1980-81	27,681	859,092	290,746	1,149,838	14,911	73,712	11,047	12,367	46,526	28,506	2,883
	—1979-80	27,430	862,368	291,816	1,154,184	13,358	65,355	9,288	11,126	41,580	25,614	2,187
	—1978-79	26,312	852,982	290,909	1,143,891	11,966	55,211	8,515	9,300	33,765	22,230	2,263

(a) Excludes single establishment manufacturing enterprises with fewer than four persons employed (see paragraph 5 of the Explanatory notes). (b) See paragraph 5 of the Explanatory notes. (c) Includes working proprietors.
 (d) Excludes the drawings of working proprietors.

MANUFACTURING ESTABLISHMENTS(a): SUMMARY OF OPERATIONS, BY INDUSTRY SUBDIVISION, 1982-83—continued

ASIC code	Industry subdivision Description	Establishments at 30 June(b) (no.)	Average employment over whole year(c)			Wages and salaries(d) (\$ m)	Turnover (\$ m)	Stocks		Purchases, transfers in and selected expenses (\$ m)	Value added (\$ m)	Fixed capital expenditure less disposals (\$ m)
			Males (no.)	Females (no.)	Persons (no.)			Opening (\$ m)	Closing (\$ m)			
NEW SOUTH WALES												
21	Food, beverages and tobacco	1,017	38,488	16,128	54,616	952	5,504	600	633	3,659	1,878	243
23	Textiles	199	5,157	3,831	8,988	149	692	128	120	417	267	22
24	Clothing and footwear	775	4,546	15,602	20,148	243	920	142	131	530	379	6
25	Wood, wood products and furniture	1,429	20,146	3,976	24,122	326	1,379	194	193	800	578	54
26	Paper, paper products, printing and publishing	1,248	24,554	11,537	36,091	632	2,447	289	273	1,262	1,168	53
27	Chemical, petroleum and coal products	428	19,771	8,808	28,579	555	3,393	631	665	2,011	1,415	137
28	Non-metallic mineral products	573	13,122	1,790	14,912	290	1,373	206	218	845	539	71
29	Basic metal products	206	41,895	3,314	45,209	916	3,976	977	873	2,938	934	481
31	Fabricated metal products	1,728	31,319	7,320	38,639	618	2,462	400	373	1,405	1,031	69
32	Transport equipment	422	28,776	2,768	31,544	575	1,684	330	329	820	863	30
33	Other machinery and equipment	1,618	45,067	16,407	61,474	1,027	3,738	852	789	1,985	1,689	95
34	Miscellaneous manufacturing	865	14,383	7,629	22,012	349	1,448	234	241	850	605	49
21-34	Total manufacturing—1982-83	10,508	287,224	99,110	386,334	6,632	29,014	4,984	4,838	17,520	11,347	1,309
	— 1981-82	10,625	319,327	112,456	431,783	6,623	29,538	4,854	5,051	17,910	11,825	1,314
	— 1980-81	10,334	323,117	112,997	436,114	5,884	26,898	4,235	4,856	16,653	10,865	991
VICTORIA												
21	Food, beverages and tobacco	963	36,907	14,497	51,404	857	5,898	648	711	4,104	1,857	142
23	Textiles	308	10,377	6,650	17,027	273	1,074	201	193	652	414	27
24	Clothing and footwear	945	10,310	30,913	41,223	511	1,716	289	286	895	818	21
25	Wood, wood products and furniture	1,080	15,466	2,903	18,369	244	1,030	139	141	590	442	16
26	Paper, paper products, printing and publishing	885	24,092	9,562	33,654	570	2,259	292	295	1,216	1,047	77
27	Chemical, petroleum and coal products	289	15,571	4,689	20,260	398	2,466	412	436	1,545	945	113
28	Non-metallic mineral products	396	9,502	1,449	10,951	204	867	119	130	468	409	25
29	Basic metal products	193	12,458	1,534	13,992	280	1,748	294	277	1,274	458	206
31	Fabricated metal products	1,087	28,772	5,977	32,249	507	1,944	358	321	1,068	838	41
32	Transport equipment	376	45,828	8,644	54,472	966	4,014	673	670	2,599	1,412	212
33	Other machinery and equipment	1,160	35,082	11,017	46,099	769	2,986	779	742	1,630	1,318	77
34	Miscellaneous manufacturing	735	16,665	7,358	24,023	371	1,706	276	257	1,037	650	63
21-34	Total manufacturing—1982-83	8,417	258,530	105,193	363,723	5,952	27,707	4,481	4,460	17,079	10,608	1,019
	— 1981-82	8,916	278,908	113,829	392,737	5,757	27,208	4,200	4,601	17,031	10,578	1,046
	— 1980-81	8,726	277,744	113,745	391,489	5,032	23,856	3,809	4,207	14,814	9,440	712

(a) Excludes single establishment manufacturing enterprises with fewer than four persons employed (see paragraph 5 of the Explanatory notes).

(d) Excludes the drawings of working proprietors.

(b) See paragraph 5 of the Explanatory notes.

(c) Includes working proprietors.

MANUFACTURING ESTABLISHMENTS(a): SUMMARY OF OPERATIONS, BY INDUSTRY SUBDIVISION, 1982-83 *continued*

ASIC code	Industry subdivision Description	Establishments at 30 June(b) (no.)	Average employment over whole year(c)			Wages and salaries(d) (\$ m)	Turnover (\$ m)	Stocks		Purchases, transfers in and selected expenses (\$ m)	Value added (\$ m)	Fixed capital expenditure less disposals (\$ m)
			Males (no.)	Females (no.)	Persons (no.)			Opening (\$ m)	Closing (\$ m)			
QUEENSLAND												
21	Food, beverages and tobacco	565	24,484	7,382	31,866	507	3,374	218	238	2,398	996	114
23	Textiles	44	652	492	1,144	15	88	14	11	70	16	1
24	Clothing and footwear	94	558	2,657	3,215	37	98	14	13	40	57	—
25	Wood, wood products and furniture	622	9,559	1,673	11,232	143	545	72	73	312	233	9
26	Paper, paper products, printing and publishing	270	7,317	3,009	10,326	162	584	59	62	296	290	25
27	Chemical, petroleum and coal products	70	2,594	437	3,031	58	1,414	153	211	1,308	163	30
28	Non-metallic mineral products	335	5,942	446	6,388	113	676	81	102	429	268	38
29	Basic metal products	60	6,078	450	6,528	129	1,181	249	282	864	350	280
31	Fabricated metal products	589	11,352	2,074	13,426	200	903	127	113	548	342	15
32	Transport equipment	207	11,473	593	12,066	189	956	145	159	608	362	10
33	Other machinery and equipment	339	9,438	1,582	11,020	170	643	122	118	360	279	14
34	Miscellaneous manufacturing	237	3,329	1,333	4,662	60	294	35	38	182	115	5
21-34	Total manufacturing—1982-83	3,432	92,776	22,128	114,904	1,784	10,756	1,289	1,420	7,415	3,473	541
	—1981-82	3,556	99,429	23,288	122,717	1,700	10,590	1,154	1,328	7,316	3,448	622
	—1980-81	3,291	94,319	21,796	116,115	1,410	9,667	1,007	1,111	6,722	3,049	414
SOUTH AUSTRALIA												
21	Food, beverages and tobacco	363	11,964	4,807	16,771	239	1,527	265	304	1,014	552	40
23	Textiles	39	1,512	1,169	2,681	38	166	28	28	109	56	4
24	Clothing and footwear	83	1,090	908	3,998	46	158	31	34	77	85	1
25	Wood, wood products and furniture	289	5,907	2,979	6,886	90	379	53	52	233	145	7
26	Paper, paper products, printing and publishing	197	4,959	1,953	6,912	109	398	48	46	205	191	27
27	Chemical, petroleum and coal products	51	2,204	382	2,586	51	292	46	54	183	116	39
28	Non-metallic mineral products	130	2,886	288	3,174	54	299	35	41	171	134	13
29	Basic metal products	37	7,984	634	8,618	165	754	183	186	497	259	35
31	Fabricated metal products	327	6,007	1,287	7,294	104	449	55	47	267	174	6
32	Transport equipment	114	15,626	1,527	17,153	314	1,169	162	220	663	564	42
33	Other machinery and equipment	299	11,609	3,423	15,032	225	887	168	159	508	370	24
34	Miscellaneous manufacturing	178	3,843	1,759	5,602	83	335	47	47	186	149	13
21-34	Total manufacturing—1982-83	2,107	75,591	21,116	96,707	1,517	6,813	1,122	1,218	4,113	2,795	252
	—1981-82	2,219	81,402	23,472	104,874	1,446	6,651	1,101	1,154	4,084	2,620	283
	—1980-81	2,131	81,449	23,306	104,755	1,283	6,067	1,091	1,104	3,693	2,387	258

(a) Excludes single establishment manufacturing enterprises with fewer than four persons employed (see paragraph 5 of the Explanatory notes). (b) See paragraph 5 of the Explanatory notes. (c) Includes working proprietors. (d) Excludes the drawings of working proprietors.

MANUFACTURING ESTABLISHMENTS(a): SUMMARY OF OPERATIONS, BY INDUSTRY SUBDIVISION, 1982-83 - continued

ASIC code	Industry subdivision Description	Establishments at 30 June(b) (no.)	Average employment over whole year(c)			Wages and salaries(d) (\$ m)	Turnover (\$ m)	Stocks		Purchases, transfers in and selected expenses (\$ m)	Fixed capital expenditure less disposals (\$ m)	
			Males (no.)	Females (no.)	Persons (no.)			Opening (\$ m)	Closing (\$ m)			
WESTERN AUSTRALIA												
21	Food, beverages and tobacco	370	8,195	3,751	11,946	179	1,315	94	103	940	385	28
23	Textiles	30	433	281	714	8	38	6	5	24	12	1
24	Clothing and footwear	66	262	1,152	1,414	15	39	4	4	19	21	
25	Wood, wood products and furniture	431	5,771	1,062	6,833	86	352	62	60	196	153	4
26	Paper, paper products, printing and publishing	214	4,478	2,074	6,552	101	317	30	31	161	157	3
27	Chemical, petroleum and coal products	81	2,748	368	3,116	66	442	63	77	302	155	24
28	Non-metallic mineral products	215	3,992	386	4,378	75	356	58	64	205	156	12
29	Basic metal products	39	5,190	350	5,540	128	1,338	199	191	922	408	442
31	Fabricated metal products	438	7,702	1,086	8,788	136	577	73	86	335	255	12
32	Transport equipment	158	4,600	246	4,846	75	197	28	32	97	104	4
33	Other machinery and equipment	321	6,862	1,150	8,012	128	463	101	113	268	207	16
34	Miscellaneous manufacturing	172	1,887	618	2,505	35	167	22	23	105	63	4
21-34	Total manufacturing—1982-83	2,535	52,120	12,524	64,644	1,032	5,602	741	788	3,573	2,076	537
	—1981-82	2,603	57,395	13,404	70,799	1,013	5,491	673	736	3,501	2,053	719
	—1980-81	2,426	55,874	12,996	68,870	869	4,902	563	686	3,149	1,877	424
TASMANIA												
21	Food, beverages and tobacco	119	3,926	1,956	5,882	81	596	63	72	443	163	12
23	Textiles	11	n.p.	n.p.	n.p.	n.p.	n.p.	n.p.	n.p.	n.p.	n.p.	n.p.
24	Clothing and footwear	5	82	117	199	2	8	1	1	4	3	
25	Wood, wood products and furniture	124	3,021	197	3,218	46	228	47	44	141	84	2
26	Paper, paper products, printing and publishing	47	4,369	690	5,059	95	379	45	41	211	164	8
27	Chemical, petroleum and coal products	16	n.p.	n.p.	n.p.	n.p.	n.p.	n.p.	n.p.	n.p.	n.p.	n.p.
28	Non-metallic mineral products	44	717	54	771	14	78	12	14	48	33	2
29	Basic metal products	11	n.p.	n.p.	n.p.	n.p.	n.p.	n.p.	n.p.	n.p.	n.p.	n.p.
31	Fabricated metal products	76	1,312	193	1,505	20	75	12	12	44	31	3
32	Transport equipment	20	538	116	654	11	31	16	17	13	19	2
33	Other machinery and equipment	35	615	91	706	12	30	5	4	15	16	1
34	Miscellaneous manufacturing	27	346	63	409	6	24	3	3	12	11	
21-34	Total manufacturing—1982-83	535	19,923	4,482	24,405	389	1,963	341	326	1,258	690	45
	—1981-82	555	21,345	4,464	25,809	370	1,898	298	350	1,237	713	84
	—1980-81	558	21,942	4,586	26,528	347	1,867	280	302	1,176	713	60

(a) Excludes single establishment manufacturing enterprises with fewer than four persons employed (see paragraph 5 of the Explanatory notes). (b) See paragraph 5 of the Explanatory notes. (c) Includes working proprietors. (d) Excludes the drawings of working proprietors.

MANUFACTURING ESTABLISHMENTS(a): SUMMARY OF OPERATIONS, BY INDUSTRY SUBDIVISION, 1982-83 - continued

ASIC code	Industry subdivision Description	Establishments at 30 June(b) (no.)	Average employment over whole year(c)			Wages and salaries(d) (\$ m)	Turnover (\$ m)	Stocks		Purchases, transfers in and selected expenses (\$ m)	Value added (\$ m)	Fixed capital expenditure less disposals (\$ m)
			Males (no.)	Females (no.)	Persons (no.)			Opening (\$ m)	Closing (\$ m)			
NORTHERN TERRITORY												
21	Food, beverages and tobacco	24	591	150	741	13	74	6	6	54	21	1
23	Textiles	—	—	—	—	—	—	—	—	—	—	—
24	Clothing and footwear	2	n.p.	n.p.	n.p.	n.p.	n.p.	n.p.	n.p.	n.p.	n.p.	n.p.
25	Wood, wood products and furniture	14	88	18	106	1	6	1	1	4	2	—
26	Paper, paper products, printing and publishing	16	202	123	325	5	17	2	2	6	10	1
27	Chemical, petroleum and coal products	17	n.p.	n.p.	n.p.	n.p.	n.p.	n.p.	n.p.	n.p.	n.p.	n.p.
28	Non-metallic mineral products	1	n.p.	n.p.	n.p.	n.p.	n.p.	n.p.	n.p.	n.p.	n.p.	n.p.
29	Basic metal products	4	n.p.	n.p.	n.p.	n.p.	n.p.	n.p.	n.p.	n.p.	n.p.	n.p.
31	Fabricated metal products	19	182	31	213	3	21	4	4	16	4	—
32	Transport equipment	3	27	6	33	—	2	—	—	1	—	—
33	Other machinery and equipment	7	22	7	29	—	3	—	—	2	1	—
34	Miscellaneous manufacturing	7	27	5	32	—	2	—	—	1	1	—
21-34	Total manufacturing—1982-83	114	1,981	480	2,461	46	351	81	81	252	98	6
	—1981-82	106	1,962	527	2,489	42	297	83	78	231	61	11
	—1980-81	98	2,117	534	2,651	42	292	49	83	231	96	20
AUSTRALIAN CAPITAL TERRITORY												
21	Food, beverages and tobacco	10	311	131	442	7	36	1	1	26	10	1
23	Textiles	1	n.p.	n.p.	n.p.	n.p.	n.p.	n.p.	n.p.	n.p.	n.p.	n.p.
24	Clothing and footwear	4	n.p.	n.p.	n.p.	n.p.	n.p.	n.p.	n.p.	n.p.	n.p.	n.p.
25	Wood, wood products and furniture	35	427	58	485	7	31	3	4	16	15	2
26	Paper, paper products, printing and publishing	42	922	378	1,300	25	65	6	6	32	33	2
27	Chemical, petroleum and coal products	—	—	—	—	—	—	—	—	—	—	—
28	Non-metallic mineral products	14	n.p.	n.p.	n.p.	n.p.	n.p.	n.p.	n.p.	n.p.	n.p.	n.p.
29	Basic metal products	2	n.p.	n.p.	n.p.	n.p.	n.p.	n.p.	n.p.	n.p.	n.p.	n.p.
31	Fabricated metal products	15	419	91	510	8	40	33	37	22	23	1
32	Transport equipment	5	42	6	48	1	2	—	—	2	1	—
33	Other machinery and equipment	15	131	43	174	3	11	1	1	6	5	—
34	Miscellaneous manufacturing	8	28	13	41	—	2	—	—	1	1	—
21-34	Total manufacturing—1982-83	151	2,468	757	3,225	54	217	48	52	124	97	6
	—1981-82	126	2,627	824	3,451	49	188	14	17	112	78	6
	—1980-81	117	2,530	786	3,316	45	163	13	17	89	77	3

(a) Excludes single establishment manufacturing enterprises with fewer than four persons employed (see paragraph 5 of the Explanatory notes). (b) See paragraph 5 of the Explanatory notes. (c) Includes working proprietors. (d) Excludes the drawings of working proprietors.