

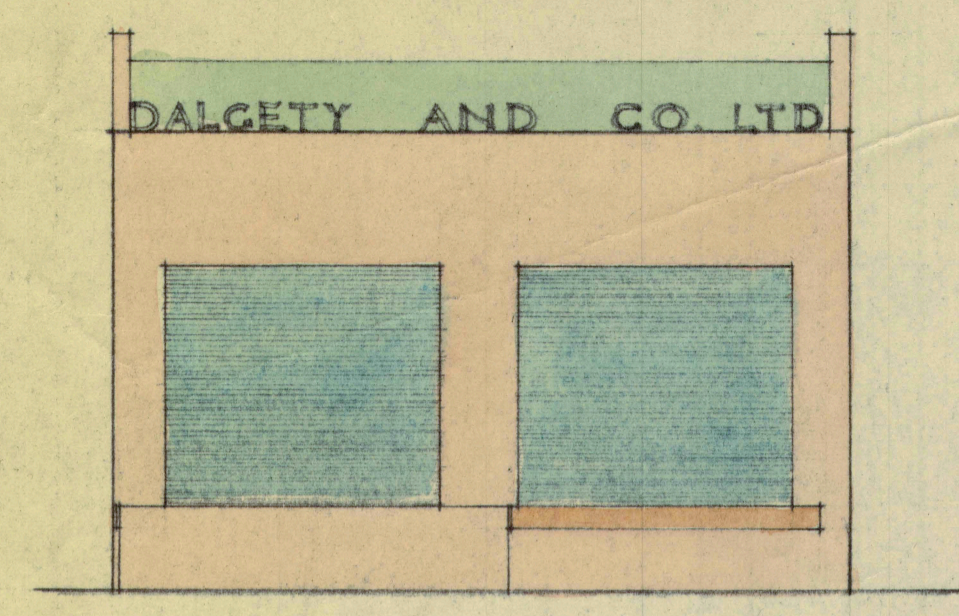
10th May. — measured 7th 1931/2.

Queen's

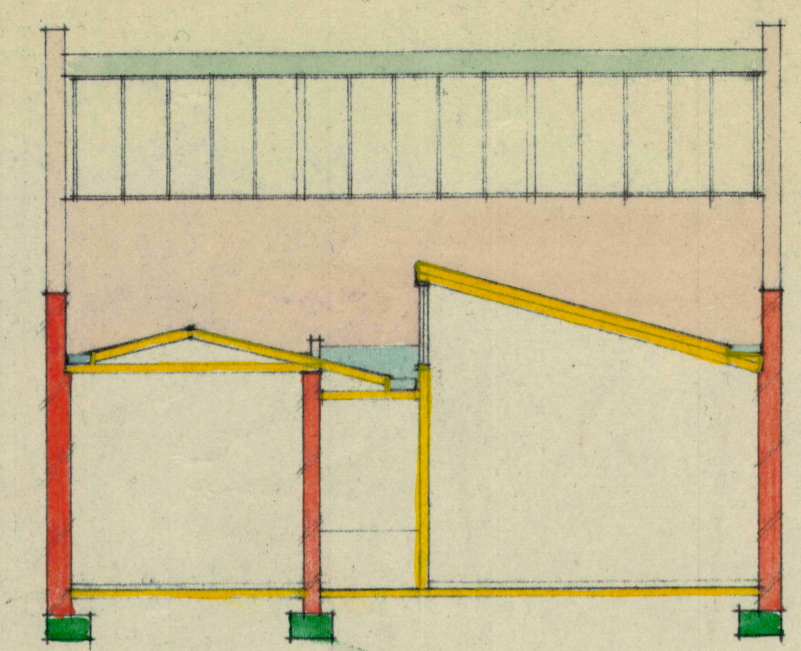
- (a) Height of floor — 3'-6"
- (b) Position of ramp — central as to allow for future works
- (c) Platform — concrete for weather.

Keyett

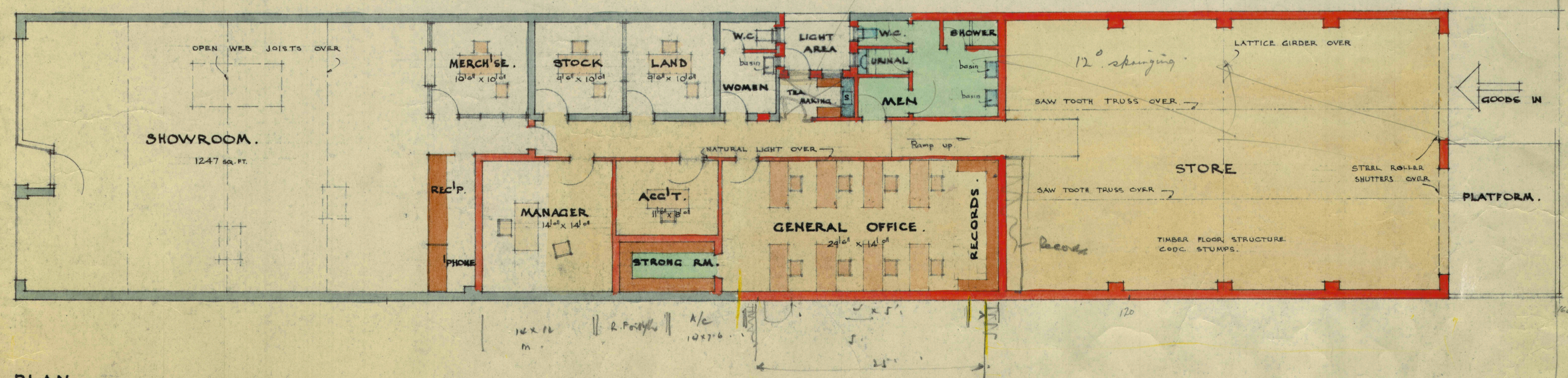
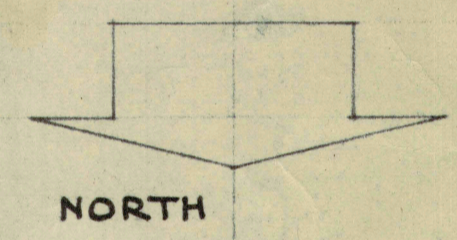
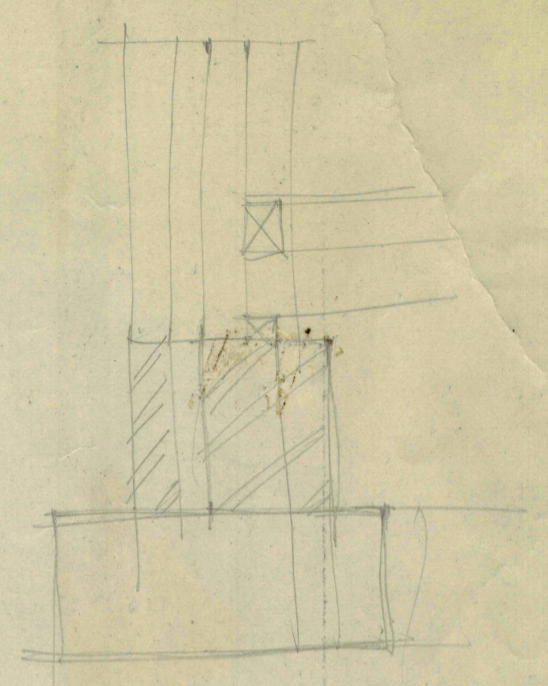
McClellan
Madden



• REAR ELEVATION



• SECTION



• PLAN

6/11/222/11/9

| | | |
|--|---|-----------------------|
| DALGETY AND COMPANY LIMITED. WYNDHAM STREET, SHEPPARTON. VIC. | | |
| DRAWN BY WALKER | SKETCH PLAN | DRAWING No. 5438/D |
| CHECKED BY | | SCALE 1/8" = 1' 0" |
| DATE 13 th OCT '54 | HOWDEN AND McLEAN ARCHITECTS 417 COLLINS ST. MELBOURNE. O.T. | |