

MONTHLY BULLETIN

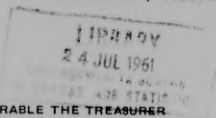
of

PRODUCTION STATISTICS



No. 152 May, 1961

COMMONWEALTH BUREAU
of
CENSUS AND STATISTICS
CANBERRA, AUSTRALIA



PREPARED UNDER INSTRUCTIONS FROM THE RIGHT HONORABLE THE TREASURER

BY

S. R. CARVER

COMMONWEALTH STATISTICIAN

MONTHLY PRODUCTION : AUSTRALIA

1938-39, 1959-60, 1960-61



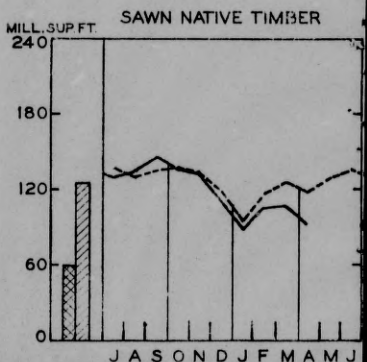
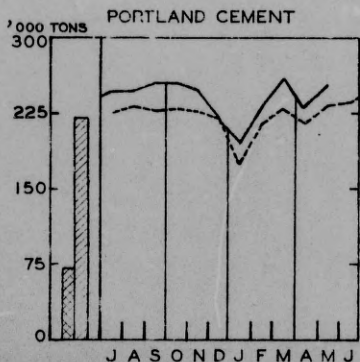
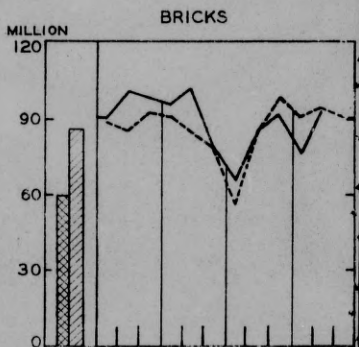
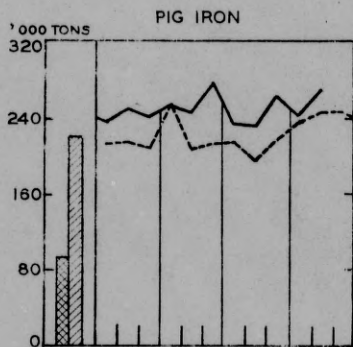
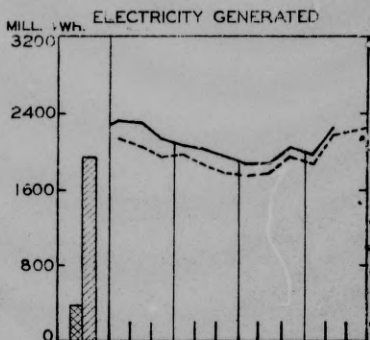
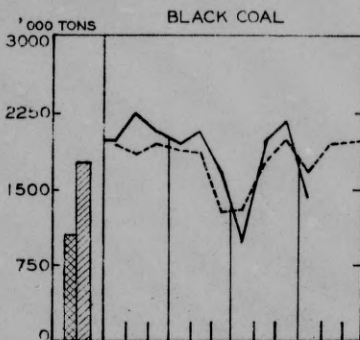
MONTHLY AVERAGE 1938-39



MONTHLY AVERAGE 1959-60

— 1960-61

- - - 1959-60



MONTHLY BULLETIN OF AUSTRALIAN PRODUCTION STATISTICS

NO. 152 MAY, 1961

For the purpose of the accompanying statistics, a "factory" is taken to be a manufacturing establishment in which four or more persons are employed, or in which power other than manual is used, and the production of small establishments not classified for statistical purposes as factories is not included in the figures shown herein. Annual totals for 1948-49 and the last three complete financial years are shown in conjunction with (a) totals for the most recent six month and three month periods, together with comparative figures for the same periods, twelve months earlier, and (b) monthly totals for each of the latest thirteen months (in most cases).

Figures from July, 1959 onwards are preliminary and subject to revision, but the annual totals shown for 1958-59 are final.

An index of the contents is given on page 2.

Many of the items included are shown in greater detail in the Secondary Industries Bulletin, the series of Manufacturing Industries Bulletins and Monthly Production Summaries.

The production of each of the commodities listed is given up to the latest available month. For each commodity other than those collected by, or in conjunction with Government Statisticians, the authority responsible for providing the figures is indicated by a footnote to the item title. Figures up to 1958-59 inclusive represent totals derived, wherever possible, from annual factory returns collected by Deputy Commonwealth Statisticians in each State. It should be noted that in some cases annual returns are accepted from factories for a year other than the normal financial year ended 30th June.

PERSONS USING THIS BULLETIN ARE ASKED TO NOTE PARTICULARLY THE FOLLOWING:-

1. The Monthly Bulletin of Production Statistics contains data of monthly output of over 150 individual factory products. As monthly particulars of additional items are collected and become available for publication, they will be included in the Bulletin. The items for which quantity of output is published herein are not, however, selected as representative of all factory output. In practice, it is not possible to make such a selection at present.
2. The tables should be read only as showing monthly trends in output of the individual items or groups of items listed. They have not been summarised into a monthly index of Volume of Factory Output, nor a monthly index of Industrial Production, because they cannot be assumed to be representative of total trends in volume of factory output nor volume of industrial production. It is, in fact, improbable that they are continually representative in this sense.
3. Although the list of items in these monthly tables includes only a small proportion of all the items produced in factories, it nevertheless relates directly to items accounting for possibly up to 35 per cent. of total value of factory output.
4. Comparable annual data of quantity of output are collected at present for a longer list of items covering about one-half of factory production, measured in gross value of output, or slightly less (about 45 per cent.) measured in terms of net value of output or "value added" by process of manufacture. Among the factors limiting useful extension in the annual collection of factory output (in quantitative terms) into the field as yet unrecorded in that way are: (i) the fact that a large part of factory production cannot be expressed in quantity terms but only as a gross or net value of output; (ii) the great and growing diversity of factory products; and (iii) the absence of homogeneity in many types of factory products.

S.R. CARVER
COMMONWEALTH STATISTICIAN

INDEX OF CONTENTS

ITEM	Page	ITEM	Page	ITEM	Page
Aerated Waters	20	Foundation Garments	17	Racquet Frames	21
Aluminium	3	Fruit, Preserved	20	Radiators, Electric	9
Bacon and Ham	19			Radios and Radiograms	10
Basins, Wash	5	Gas	4	Rayon Cloth	15
Bath Heaters	5	Gloves	18	Record Changers	10
Bathing Suits	18	Glycerine, Refined	7	Record Players	10
Baths	5	Gold	3	Refrigerators	9
Batteries	21	Golf Balls	21	Room Air Conditioners	9
Beef and Veal	19	Golf Clubs	21	Rugs	14
Beer	21			Shirts	18
Biscuits	20	Hats (Felt)	15	Shoes	15
Blankets	14	Hides and Skins	18	Shorts	18
Blooms and Billets (Steel)	3	Hosiery	15	Silver	3
Boots, Shoes and Sandals	15	Hot Water Systems	5	Sink Heaters	5
Bran (Wheaten)	19	Hydrochloric Acid	7	Sinks	5
Brassieres	17	Ice Cream	21	Slippers	15
Bricks, Clay	4	Iron and Steel	3	Soap	8
Briquettes (Coal)	4	Irons (Hand)	9	Socks and Stockings	15
Butter	21			Spaghetti (Canned)	20
		Jam	20	Sports Coats	16
Cardigans and Pullovers	17	Jodhpurs	16	Starch, Edible	19
Cement Building Sheets	4	Jugs, Electric	9	Steel Ingots	3
Cement, Portland	4	Lacquers	7	Stoves, Cooking	6
Chassis, Motor Vehicle	12	Lawnmowers, Petrol	11	Sugar, Refined	19
Cheese	21	Lead	3	Suits, Men's and Boys'	16
Chemicals	7			Sulphate of Ammonia	7
Chlorine	7	Malt	19	Sulphuric Acid	7
Cigars, Cigarettes	21	Margarine	20	Superphosphate	7
Cleansers and Scourers	8	Mattresses	18	Swim Wear	18
Cloth - Cotton	13	Meat, Canned	19	Synthetic Fibre Cloth	15
" - Woollen	14	Meat, Fresh	19		
" - Rayon	15	Metals, Refined	3	Tape Recorders	10
" - Synthetic	15	Meters	6	Television Sets	10
Clothing	15-18	Milk Products	21	Tennis Balls	21
Coal, Black	3	Milk, Whole	21	Textiles	13-15
" Brown	3	Mixers, Food	9	Thinners	7
Coats	16	Motor Bodies	12	Tiles, Roofing	4
Cocunut Oil	20	Motor Vehicle Chassis	12	Timber, Sawn	4
Coke, Metallurgical	4	Motors, Electric	11	Tin	3
Confectionery	20	Mutton and Lamb	19	Tin Plate	3
Copper	3			Toasters, Electric	9
Corsets	17	Newsprint	21	Tobacco	21
Cotton Textiles	13	Nightdresses	17	Tomato Sauce	20
Cotton Yarns and Threads	13	Nitric Acid	7	Tomato Soup	20
Cricknet Balls	21			Towels	14
Cycles	11	Oatmeal and Rolled Oats	19	Trousers	16
		Overalls	16	Tubes, Inner	12
Detergents	8	Overcoats	16	Tyres, Pneumatic	12
Dry Shavers, Electric	9			Underwear	17
		Paints and Enamels	7	Vacuum Cleaners	9
Electric Motors	11	Pans (Closets)	5	Vegetables, Preserved	20
Electrical Appliances	9	Perambulators	11	Wallboard (Hardboard)	6
Electricity	4	Phonograms	10	Wash Basins	5
Engines	11	Phonograph Records	10	Wash Boilers	6
		Pig Iron	3	Washing Machines	9
Fans, Electric	9	Pollard (Wheaten)	19	Water Heaters	5
Fibrous Plaster Sheets	4	Pork	19	Wireless Sets	10
Fish, Canned	19	Pyjamas	17	Wool Products	14
Floor Coverings	6				
Floor Polishers	9				
Flour (Wheaten)	19				
Footwear	15				

The following symbols are used in this Bulletin:-
 n.a. Not available or not available for publication.
 r Figures or series revised.
 .. Nil or less than half the final digit shown.
 — Break in continuity or series (where drawn across a column). A blank space in a column of figures means that the figure concerned is not yet available.

Yarns 13-14
 Zinc 3

AUSTRALIAN PRODUCTION STATISTICS

Item Period	BLACK COAL		Brown Coal	IRON AND STEEL (a)			
	Under- ground	Total		Pig Iron	Ingot Steel (b)	Blooms and Slabs	Tinplate
							tons
Year : 1948-49	12,677	14,843	7,027	1,045	1,178	1,101	..
1957-58	18,223	20,362	10,866	2,284	3,038	2,492	40,781
1958-59	18,658	20,459	12,243	2,294	3,204	2,814	77,190
1959-60	19,347	21,209	14,101	2,655	3,520	3,022	87,774
Latest 6 months, 1960-61	9,217	10,250	7,592	1,523	1,853	1,587	55,678
Same 6 months, 1959-60	8,920	9,761	6,813	1,328	1,764	1,529	48,963
Latest 3 months, 1960-61	4,979	5,518	4,018	776	978	831	29,238
Same 3 months, 1959-60	4,909	5,354	3,592	706	907	781	24,980
Month, 1960 : April	1,515	1,663	1,130	239	294	248	8,286
May	1,781	1,969	1,293	248	315	272	8,275
June	1,763	1,973	1,337	249	305	258	8,636
July	1,756	1,974	1,397	239	309	271	9,160
August	1,988	2,212	1,417	252	332	295	9,000
September	1,854	2,059	1,333	243	310	268	7,740
October	1,772	1,971	1,299	256	315	270	8,600
November	1,874	2,080	1,239	249	313	265	9,020
December	1,515	1,675	1,167	279	336	284	8,498
1961 : January	849	977	1,203	235	257	225	9,163
February	1,774	1,947	1,204	233	282	247	8,779
March	1,960	2,159	1,259	263	325	276	10,341
April	1,245	1,412	1,269	241	321	270	9,192
May			1,490	272	332	285	9,705

Item Period	REFINED METAL						
	Gold (c)	Silver (d)	Alum- inium (d)	Copper (d)	Lead (d) (e)	Tin (d)	Zinc (d) (f)
	'000 fine oz.				- tons -		
Year : 1948-49	881	6,814	..	11,263	204,208	1,956	75,570
1957-58	1,106	8,459	10,712	35,842	256,225	1,991	112,994
1958-59	1,065	8,439	11,356	45,269	238,945	2,228	114,705
1959-60	1,073	7,402	11,367	64,846	237,311	2,276	117,792
Latest 6 months, 1960-61	533	3,632	6,048	34,741	110,941	1,228	64,455
Same 6 months, 1959-60	540	3,590	5,600	31,975	120,248	1,041	58,880
Latest 3 months, 1960-61	286	1,717	3,182	16,762	52,275	666	33,284
Same 3 months, 1959-60	294	1,848	2,873	18,065	58,043	546	29,703
Month, 1960 : April	86	644	964	6,241	18,881	138	9,707
May	131	623	965	6,428	19,465	206	10,054
June	84	719	1,004	6,327	20,360	229	9,184
July	77	465	946	4,569	21,661	171	10,500
August	81	772	1,028	6,534	20,321	140	10,366
September	87	840	983	5,507	20,255	186	9,974
October	81	840	1,010	6,240	19,911	192	10,460
November	99	644	958	7,225	18,649	177	10,287
December	80	725	1,031	5,594	20,918	273	10,680
1961 : January	83	546	914	5,160	19,572	112	10,632
February	84	500	921	5,179	18,176	287	9,859
March	82	613	1,035	5,937	17,480	206	11,057
April	122	604	1,037	5,646	17,284	173	10,875
May	82		1,110		17,511		11,352

(a) Year ended 31st May. (b) Includes recovery from scrap. (c) Source : Commonwealth Bank. (d) Source : Bureau of Mineral Resources. (e) Includes Lead Content of Antimonial Lead and Lead Content of Lead-Silver Bullion produced for export. (f) Includes small quantities of metal recovered from Zinc Dust used in works.

AUSTRALIAN PRODUCTION STATISTICS

Period	Item	Coke- Metall- urgical	Brown Coal Frie- quettes	GAS (a)		ELECTRICITY		
				Volume	Thermal Equiv. (a)	Hydro	Thermal	Total
				Mill. cu. ft.	Mill. Therma.			
		- '000 tons -						
Year : 1948-49		1,150	559	46,733	188	1,378	7,675	9,053
1957-58		2,296	626	47,655	240	3,428	16,368	19,796
1958-59		2,211	643	46,567	245	3,819	17,380	21,199
1959-60		2,393	975	50,618	257	4,067	19,257	23,344
Latest 6 months, 1960-61		1,396	893	22,301	116.9	2,108	9,826	11,934
Same 6 months, 1959-60		1,209	563	22,827	116.3	1,985	9,283	11,268
Latest 3 months, 1960-61		700	473	12,198	63.8	1,079	5,177	6,256
Same 3 months, 1959-60		645	317	12,551	64.3	1,024	4,962	5,986
Month, 1960 :	April	212	102	3,891	20.0	323	1,549	1,872
	May	223	105	4,930	25.2	366	1,811	2,177
	June	219	112	5,212	26.8	365	1,847	2,212
	July	225	136	5,352	28.1	416	1,896	2,312
	August	226	140	5,215	27.4	471	1,832	2,303
	September	225	162	4,583	24.0	442	1,679	2,121
	October	232	161	4,266	22.4	475	1,606	2,081
	November	237	152	3,993	21.0	444	1,586	2,030
	December	252	135	3,639	19.2	376	1,570	1,946
1961 :	January	224	135	3,254	17.1	335	1,538	1,873
	February	220	150	3,210	16.8	318	1,541	1,859
	March	241	154	3,651	19.1	358	1,690	2,048
	April	223	152	3,792	19.8	347	1,610	1,957
	May	236	167	4,755	24.9	374	1,877	2,251

Period	Item	BUILDING MATERIALS						
		Clay Bricks	Cement Building Sheets (c)	Cement	Fibrous Plaster Sheets	Roofing Tiles		Sawn Native Timber (d)
						Terra Cotta	Cement	
		Mill.	Mill. sq.yds.	'000 tons	'000 sq.yds.	- million -		Mill. sq. ft.
Year : 1948-49		617	18.6	1,031	13,234	44.2	28.3	1,218
1957-58		878	26.0	2,291	18,066	58.9	49.5	1,469
1958-59		940	26.8	2,481	18,341	59.2	52.3	1,546
1959-60		1,029	30.1	2,635	18,397	57.2	57.6	1,507
Latest 6 months, 1960-61		489	12.3	1,378	7,643	26.1	23.3	632
Same 6 months, 1959-60		495	14.0	1,272	8,803	26.7	27.4	709
Latest 3 months, 1960-61		260	6.5	738	3,895	14.5	11.6	302
Same 3 months, 1959-60		275	7.6	671	4,796	14.6	15.4	362
Month, 1960 :	April	80.5	2.39	213	1,454	4.56	4.59	114.2
	May	94.7	2.63	230	1,606	4.87	5.47	128.5
	June	91.2	2.58	233	1,613	5.16	5.26	137.0
	July	91.2	2.66	243	1,577	4.56	5.20	127.5
	August	101.1	2.82	245	1,695	5.43	5.55	133.2
	September	97.9	2.79	253	1,640	4.84	5.37	144.5
	October	96.0	2.89	253	1,598	4.72	5.41	135.4
	November	102.1	2.82	247	1,542	5.60	5.51	133.3
	December	78.9	1.91	218	1,310	3.86	4.20	111.2
1961 :	January	65.1	1.53	193	1,087	2.92	3.45	85.0
	February	85.0	2.42	229	1,351	4.81	4.12	101.6
	March	91.6	2.13	256	1,365	4.84	3.96	107.6
	April	75.5	1.95	231	1,198	4.24	3.35	92.9
	May	93.1	2.37	251	1,332	5.42	4.25	

(a) Produced in Gasworks. (b) 1 Therma = 100,000 British Thermal Units. (c) Selling square yards. (d) i.e. Australian Grown. Source : Forestry and Timber Bureau and State Forests Commission of Victoria for 1959-60 and later periods.

AUSTRALIAN PRODUCTION STATISTICS

Item	BUILDING FITTINGS						
	Bath Heaters			Hot Water Systems			
	Electric	Gas	Solid Fuel	Storage (a)			Non-Storage (b)
				Electric	Gas	Solid Fuel	Electric
Period	Number						
Year : 1948-49	12,803	32,954	56,084	32,413	7,450	6,352	n.a.
1957-58	12,415	26,234	31,581	56,826	12,931	12,769	11,288
1958-59	12,533	23,190	30,185	63,384	15,279	12,012	14,324
1959-60	12,235	21,349	28,158	70,326	17,360	13,962	20,279
Latest 6 months, 1960-61	6,236	7,010	10,197	30,568	7,465	4,707	7,321
Same 6 months, 1959-60	5,366	9,470	12,543	33,990	8,158	6,268	9,558
Latest 3 months, 1960-61	3,403	3,795	5,925	16,293	3,764	2,277	3,750
Same 3 months, 1959-60	3,051	5,068	7,433	18,492	4,920	3,520	5,507
Month, 1960 :							
April	1,085	1,644	2,233	5,492	1,518	964	1,763
May	773	1,607	3,274	6,200	1,459	1,347	1,835
June	1,130	1,663	2,843	6,051	1,217	1,371	1,812
July	1,194	1,822	2,847	6,295	1,852	1,203	1,824
August	1,381	1,986	2,722	7,164	2,038	1,416	1,939
September	1,425	1,759	2,464	6,695	2,029	1,400	1,811
October	1,275	1,605	1,845	6,470	2,103	1,365	1,704
November	1,341	1,672	1,486	6,766	2,061	1,360	1,787
December	1,016	1,047	2,059	5,242	1,575	989	1,415
1961 :							
January	745	923	882	3,925	992	556	861
February	1,072	1,245	1,331	5,108	1,134	885	1,295
March	1,031	1,175	1,768	5,226	1,208	630	1,421
April	1,070	1,095	1,852	4,497	1,095	791	1,064
May	1,302	1,525	2,305	6,570	1,461	856	1,265

Item	BUILDING FITTINGS						
	Sink Heaters		Wash Basins		Baths, C.I.P.E.	Pans (Closets)	Sinks, Stainless Steel
	Electric	Gas	C.I.P.E.	Earthenware			
					Period	Number	
Year : 1948-49	11,459	7,097	n.a.	n.a.	63,829	n.a.	69,594
1957-58	15,054	4,302	116,529	35,249	88,206	179,744	176,875
1958-59	16,258	3,563	121,498	37,106	87,954	216,707	184,608
1959-60	13,710	3,148	121,374	47,910	91,591	234,721	194,738
Latest 6 months, 1960-61	5,438	959	42,874	31,889	37,078	123,155	75,369
Same 6 months, 1959-60	6,249	1,596	57,547	25,902	46,168	117,649	92,933
Latest 3 months, 1960-61	2,848	564	21,259	18,163	18,448	67,187	40,188
Same 3 months, 1959-60	3,378	801	31,102	17,480	26,832	67,167	48,078
Month, 1960 :							
April	903	267	9,231	5,802	7,592	21,927	14,836
May	1,079	291	10,172	5,833	9,010	21,251	16,695
June	991	309	9,013	5,586	7,945	21,701	14,364
July	1,242	341	7,518	6,058	7,468	20,314	15,106
August	1,395	432	9,045	6,194	8,318	22,139	17,256
September	1,569	384	8,724	6,041	8,181	22,704	15,855
October	1,220	127	9,630	4,741	7,625	23,518	16,086
November	1,074	266	10,567	6,908	8,319	22,650	16,286
December	1,192	74	7,377	5,194	6,498	20,055	12,834
1961 :							
January	609	48	6,782	3,965	5,406	15,269	9,931
February	789	273	7,456	4,567	6,726	20,644	12,416
March	1,106	167	7,914	6,281	5,432	24,150	13,464
April	702	150	6,695	5,042	5,929	20,019	11,771
May	1,040	247	6,650	6,840	7,087	23,018	14,953

(a) Includes Heat Exchange (Coil) Type, Displacement or Falling Level Type and Circulating System.

(b) Instantaneous Type.

AUSTRALIAN PRODUCTION STATISTICS

Period	Item	BUILDING FITTINGS						
		Stoves, Ovens and Ranges - Domestic Cooking						
		Solid Fuel			Electric			
		Slow Combustion (a)	Other	Gas Ranges	Fixed Ranges	Other Ranges	Grill Boilers	Oil
Year : 1948-49	61,434		49,556	41,931		59,299	n.a.	
1957-58	16,624	26,615	55,960	55,055	23,043	14,315	51,020	
1958-59	15,723	23,730	66,370	63,774	17,548	18,902	43,291	
1959-60	15,993	20,918	79,587	73,374	20,659	21,444	38,411	
Latest 6 months, 1960-61	5,492	6,580	31,694	30,570	5,406	3,408	10,139	
Same 6 months, 1959-60	7,279	9,374	36,505	36,640	9,885	7,351	17,142	
Latest 3 months, 1960-61	3,030	3,832	15,160	14,329	2,202	696	5,419	
Same 3 months, 1959-60	3,909	4,939	18,641	20,018	3,782	2,263	8,320	
Month, 1960 :								
April	1,272	1,390	5,492	5,805	1,142	349	2,222	
May	1,339	1,748	6,224	6,603	1,005	443	3,301	
June	1,181	2,026	5,853	5,416	1,166	354	2,053	
July	2,026	1,673	16,457	5,412	1,040	1,023	1,535	
August	2,153	1,816	8,730	7,681	3,177	2,869	1,815	
September	1,638	1,819	7,749	7,198	3,479	3,254	2,480	
October	1,377	1,441	7,291	6,998	3,315	2,521	2,882	
November	1,505	1,559	7,569	8,342	3,105	1,360	3,256	
December	1,080	1,086	6,154	6,009	1,861	1,204	2,339	
1961 :								
January	576	762	4,130	4,494	839	809	1,038	
February	806	900	6,250	5,738	504	699	1,343	
March	1,010	1,282	5,653	5,119	452	198	1,307	
April	858	1,150	4,633	4,428	883	224	3,666	
May	1,162	1,400	4,874	4,782	867	274	446	

Period	Item	BUILDING FITTINGS					Wall and Ceiling Board: Hardboard	Floor Coverings (c) '000 sq. yds.
		Wash Boilers		Meters				
		Electric	Gas	Electric (b)	Gas	Water		
		Number						
Year : 1948-49	24,517	29,980	204,134	45,386	40,327	n.a.	n.a.	
1957-58	20,943	22,072	215,582	51,712	92,046	24,426	11,810	
1958-59	20,717	21,834	256,598	58,310	101,497	29,020	12,796	
1959-60	19,476	20,110	262,340	63,377	98,694	32,448	15,607	
Latest 6 months, 1960-61	6,578	7,221	133,332	29,525	63,915	13,588	5,680	
Same 6 months, 1959-60	8,617	8,905	130,326	31,780	48,433	15,561	7,345	
Latest 3 months, 1960-61	3,547	4,077	63,499	15,252	39,499	7,114	2,765	
Same 3 months, 1959-60	4,630	5,047	70,839	16,909	25,473	9,009	4,134	
Month, 1960 :								
April	1,387	1,443	17,565	5,282	8,288	2,579	1,198	
May	1,664	1,682	27,738	4,570	9,324	3,233	1,517	
June	1,539	1,692	26,243	5,117	8,740	3,132	1,494	
July	1,695	1,381	26,266	5,845	7,853	2,846	1,516	
August	1,636	1,643	27,653	7,384	9,746	3,021	1,630	
September	1,479	1,512	28,712	6,986	8,508	2,970	1,646	
October	1,327	1,315	27,990	6,067	7,546	2,818	1,554	
November	1,406	1,391	29,303	6,786	10,796	3,038	1,380	
December	1,187	931	24,167	4,484	8,044	2,090	1,166	
1961 :								
January	666	700	20,973	4,206	5,741	1,806	611	
February	1,178	1,513	24,693	5,583	10,631	2,578	1,138	
March	1,029	1,476	23,004	5,503	11,068	2,718	1,106	
April	1,172	1,074	18,514	4,740	10,761	2,089	840	
May	1,346	1,527	21,961	5,009	17,670	2,307	819	

(a) Includes Heat Storage Type. (b) Domestic Type. (c) Pile and Non-Pile Soft Floor Coverings, Linoleum (incl. Felt Base Type), Rubber Floor Coverings and Asphaltic and Thermoplastic Floor Tiles.

AUSTRALIAN PRODUCTION STATISTICS

Item	CHEMICALS						
	Acids			Chlorine	Super-phosphate (a)	Sulphate of Ammonia (b)	Refined Glycerine
	Sulphuric	Nitric	Hydrochloric				
Period	'000 tons	tons	tons	tons	- '000 tons -	'000 cwt.	
Year : 1948-49	585	3,292	3,110	n.a.	1,423	53.2	64.9
1957-58	992	14,837	3,275	20,802	2,220	118.7	95.5
1958-59	986	15,331	3,688	23,671	2,124	117.5	93.3
1959-60	1,069	16,642	3,837	26,837	2,380	103.3	98.2
Latest 6 months, 1960-61	605	7,884	1,727	12,923	1,396	49.2	42.4
Same 6 months, 1959-60	575	7,692	1,861	13,397	1,303	50.0	48.6
Latest 3 months, 1960-61	327	4,621	867	6,279	799	25.0	21.0
Same 3 months, 1959-60	313	4,320	885	6,795	740	25.5	28.6
Month, 1960 :							
April	106.9	1,491	307	2,085	253	8.70	9.38
May	104.3	1,127	265	2,437	238	8.66	9.79
June	97.5	1,578	305	2,130	231	8.33	7.61
July	80.8	1,392	336	2,421	169	8.22	10.00
August	89.0	1,650	295	2,506	204	7.35	7.37
September	95.0	1,259	336	2,582	195	8.85	7.14
October	85.8	1,138	349	2,440	185	8.59	8.62
November	73.5	1,081	341	2,429	160	10.00	6.17
December	90.9	1,130	363	2,304	190	8.56	8.44
1961 :							
January	91.2	627	286	2,249	193	8.13	6.77
February	95.0	1,506	211	2,091	214	7.49	6.24
March	106.2	1,792	339	2,199	269	7.96	5.89
April	111.0	1,354	249	1,987	261	8.55	7.13
May	110.2	1,475	279	2,093	269	8.46	7.94

Item	Ready Mixed Paints and Enamels		Water Paint (incl. Kalsomine)		Laqueres Nitro-cellulose	Thinners	
	Architectural and Decorative	Industrial	Emulsion Types	Powder (incl. Kalsomine)		For Laqueres	For Enamels
	Period	- thousand gallons -			'000 lb.	- thousand gallons -	
Year : 1948-49	3,413			n.a.	830	1,250	
1957-58	8,265	2,824	1,801	3,916	1,559	2,160	545
1958-59	8,432	3,003	2,032	3,295	1,598	2,293	536
1959-60	8,356	3,560	2,547	2,793	1,796	2,539	631
Latest 6 months, 1960-61	3,645	1,757	1,071	1,236	602	1,230	289
Same 6 months, 1959-60	3,999	1,805	1,191	1,337	893	1,261	314
Latest 3 months, 1960-61	1,814	883	522	626	309	633	139
Same 3 months, 1959-60	2,065	1,005	629	717	490	687	176
Month, 1960 :							
April	633	292	178	250	153	203	53.0
May	662	343	234	222	153	228	60.9
June	615	330	199	225	118	218	49.0
July	598	332	210	163	116	215	55.0
August	704	356	230	249	134	238	60.4
September	719	372	246	280	134	233	56.7
October	777	385	255	282	123	239	57.9
November	802	434	286	325	134	255	68.8
December	661	327	223	260	113	220	46.3
1961 :							
January	500	222	150	170	64	148	47.7
February	670	325	176	180	116	229	55.3
March	637	314	191	204	119	224	46.5
April	523	254	149	179	84	187	44.2
May	654	315	182	243	106	222	48.5

(a) Source : Department of Primary Industry.

(b) Source : Nitrogen Fertilizers Pty. Ltd., for 1959-60 and later periods.

AUSTRALIAN PRODUCTION STATISTICS

Period	Item	SOAP (a)					Total	
		Household			Toilet and Hand (b)	Industrial		
		Solid Bar	Flakes and Chips	Soft and Liquid		Flakes and Chips		All Other
- Thousand cwt.								
Year : 1948-49		651	59	n.a.	283	n.a.	n.a.	1,251
1957-58		526	61	183	372	28	142	1,312
1958-59		463	59	173	397	28	129	1,249
1959-60		481	57	191	376	33	120	1,258
Latest 6 months, 1960-61		230	24.6	99.8	186	13.3	45.6	599
Same 6 months, 1959-60		225	27.1	97.1	192	15.4	57.6	614
Latest 3 months, 1960-61		134	13.4	50.2	111	7.3	22.4	339
Same 3 months, 1959-60		122	14.0	50.3	112	8.3	29.6	336
Month, 1960 :	April	42.1	3.70	16.9	32.3	2.09	8.9	106
	May	43.2	5.27	15.8	38.5	2.95	10.1	116
	June	39.7	5.87	15.6	36.0	1.71	9.8	109
	July	46.4	5.91	15.3	33.5	2.62	9.8	113
	August	29.9	5.13	17.3	34.6	1.98	9.3	98
	September	35.5	5.16	17.7	43.0	2.90	8.3	113
	October	40.1	4.53	17.8	35.0	2.71	8.1	108
	November	41.6	5.23	16.6	37.3	2.74	8.8	112
	December	39.2	3.26	16.6	29.5	2.03	8.3	99
1961 :	January	22.3	3.14	14.4	17.6	1.40	6.8	66
	February	34.1	4.74	18.6	27.2	2.65	8.1	95
	March	45.8	4.42	18.5	37.8	2.68	7.9	117
	April	r41.4	r4.41	r14.8	33.3	2.38	r6.5	r103
	May	47.2	4.61	16.9	40.3	2.19	8.0	119

Period	Item	Soap Extracts and Powders (a)		Abrasive Cleaners and Scourers (a)		Detergents (c) for :-		
		Household	Industrial	Household (d)	Industrial	Personal use (e)	Household use	Industrial use
		- Thousand cwt. -						
Year : 1948-49		610		124		n.a.	n.a.	n.a.
1957-58		788	88	68.5	4.1	9.05	428	114
1958-59		710	91	57.7	6.8	10.74	541	132
1959-60		732	95	58.8	6.6	12.22	657	134
Latest 6 months, 1960-61		265	42.5	28.1	2.65	5.50	372	62.2
Same 6 months, 1959-60		376	47.4	29.6	3.54	6.90	364	67.4
Latest 3 months, 1960-61		141	20.7	15.7	1.33	2.11	215	31.6
Same 3 months, 1959-60		182	25.9	15.6	1.90	3.02	192	33.5
Month, 1960 :	April	66	6.36	4.54	0.69	0.85	62.1	9.8
	May	59	8.56	5.32	0.60	0.96	66.3	9.3
	June	66	8.91	3.96	0.60	0.84	57.8	10.5
	July	66	8.21	4.36	0.74	0.79	72.5	12.3
	August	53	6.39	4.75	0.60	1.65	77.6	14.7
	September	61	8.28	4.40	0.61	1.37	65.3	14.7
	October	68	9.36	4.32	0.58	1.02	67.7	12.1
	November	39	10.61	5.01	0.48	1.67	78.1	13.5
	December	37	8.49	3.84	0.35	1.02	54.9	10.4
1961 :	January	43	6.49	3.64	0.39	1.02	45.7	8.5
	February	44	6.82	4.88	0.58	1.35	56.4	11.7
	March	51	5.91	5.48	0.54	0.81	64.5	13.3
	April	r55	7.16	r4.37	0.40	r0.73	r73.5	9.9
	May	35	7.59	5.86	0.39	0.57	76.7	8.4

- (a) i.e. items with active constituents of Soap or mixtures of Soap and Alkali.
 (b) Includes Shaving Soap and Shampoo. (c) Includes all Synthetic Detergents, Wetting agents and mixtures of Soap and Synthetic Detergents. (d) Includes Sand Soap.
 (e) Mainly Shampoo.

AUSTRALIAN PRODUCTION STATISTICS

Item Period	Domestic Refrigerators (a)	DOMESTIC ELECTRICAL APPLIANCES						Food Mixers (c)
		Clothes Washing Machines		Vacuum Cleaners	Irons (Hand)		Food Mixers (c)	
		Automatic (b)	Other		Steam Type	Dry Type		
- thousand -								
Year : 1948-49	145.6	6.5		65.7	209.0		n.a.	
1957-58	195.9	164.1		81.3	181.3	138.7	154.4	
1958-59	219.8	21.4	158.8	86.3	180.9	150.0	152.3	
1959-60	241.2	25.2	r175.4	95.7	181.2	154.1	129.0	
Latest 6 months, 1960-61	68.7	15.1	66.3	43.2	72.7	51.2	52.2	
Same 6 months, 1959-60	101.1	13.0	88.0	44.7	87.8	71.0	51.8	
Latest 3 months, 1960-61	25.5	8.2	36.4	20.9	38.3	28.0	26.3	
Same 3 months, 1959-60	40.9	7.9	50.8	27.0	49.4	39.9	27.4	
Month, 1960 :								
April	10.3	2.4	14.5	7.83	15.1	10.0	8.9	
May	13.1	2.5	17.3	9.68	16.1	13.9	10.5	
June	16.6	2.8	17.7	10.83	17.3	11.6	11.4	
July	17.0	2.7	16.3	10.41	15.6	12.8	9.9	
August	24.4	2.7	15.6	12.01	16.2	12.4	11.5	
September	30.3	2.8	16.5	12.77	17.0	10.1	13.2	
October	28.8	2.5	15.5	9.61	11.9	12.2	14.7	
November	33.7	3.6	14.7	12.39	16.6	16.2	16.8	
December	21.2	2.3	11.2	9.46	13.6	8.9	11.8	
1961 :								
January	11.8	1.8	7.9	5.25	9.1	5.2	5.9	
February	10.2	2.8	10.8	7.54	11.7	9.1	8.2	
March	9.7	3.1	12.3	8.78	14.2	9.6	13.8	
April	7.0	1.7	11.4	5.73	10.1	5.7	6.1	
May	8.8	3.4	12.7	6.39	14.0	12.7	6.4	

Item Period	DOMESTIC ELECTRICAL APPLIANCES							Room Air Conditioners (g)
	Fans (d)	Toasters	Hot Water Jugs	Dry Shavers (e)	Floor Polishers	Radiators and Electric Fires (f)	Number	
- thousand -								
Year : 1948-49	n.a.	148.3	81.2	n.a.	n.a.	94.8	n.a.	
1957-58	n.a.	168.0	159.2	233.5	77.4	198.2	4,678	
1958-59	n.a.	188.0	157.0	178.6	70.5	266.3	12,734	
1959-60	n.a.	208.9	168.3	231.5	96.8	290.4	38,597	
Latest 6 months, 1960-61	100.2	94.3	76.3	98.8	28.6	257.6	22,199	
Same 6 months, 1959-60	n.a.	88.1	80.9	92.9	51.6	165.2	18,083	
Latest 3 months, 1960-61	21.3	40.2	35.5	59.7	14.7	193.2	2,807	
Same 3 months, 1959-60	n.a.	45.3	39.4	54.7	30.6	123.8	3,683	
Month, 1960 :								
April	r.a.	11.7	11.4	14.7	8.85	32.3	611	
May	n.a.	15.5	14.3	21.1	11.89	56.6	1,199	
June	n.a.	16.1	13.8	32.4	12.77	48.9	1,829	
July	10.02	20.0	13.2	28.4	8.53	36.5	2,429	
August	21.68	22.2	15.3	28.4	8.47	15.9	7,449	
September	33.33	23.9	14.7	19.5	6.83	17.7	9,014	
October	29.31	24.5	18.2	16.6	6.32	18.8	11,710	
November	39.49	26.9	21.1	22.8	8.01	22.1	r 12,645	
December	31.68	20.4	16.0	16.2	5.89	17.1	r 9,901	
1961 :								
January	25.48	13.9	10.0	9.3	3.00	17.1	r 6,011	
February	21.71	19.8	14.8	13.6	5.02	30.2	r 2,480	
March	9.91	20.5	14.4	24.8	4.54	50.9	r 1,628	
April	3.75	10.0	10.2	17.9	4.77	57.8	r 800	
May	7.68	9.7	10.9	17.0	5.35	84.5	1,379	

(a) All types excl. Freezers for Quick Frozen Foodstuffs. (b) Complete washing cycle with one switch. (c) Includes "Liquidizers". (d) Complete with blades, motor and stand. (e) Excludes miniature types specifically designed for use by women. (f) Includes those with exposed heating coils and other electric room heaters with or without fan. (g) Including "Packaged" Units.

AUSTRALIAN PRODUCTION STATISTICS

Period	Item	WIRELESS AND TELEVISION					
		Radio Sets				Television Sets	
		Ca.	Portable	Other (a)	Radio-grams	Total	Television only
- thousand -							
Year : 1948-49	n.a.	n.a.	n.a.	n.a.	294.1
1957-58	85.4	77.4	166.1	101.9	380.8	273.8	8.7
1958-59	92.4	113.4	100.7	71.8	378.3	305.1	11.3
1959-60	105.9	167.6	75.7	56.7	405.9	435.2	6.6
Latest 6 months, 1960-61	28.7	94.1	27.2	27.7	177.7	95.4	2.02
Same 6 months, 1959-60	61.1	102.0	32.2	28.7	224.0	163.4	2.71
Latest 3 months, 1960-61	8.6	28.8	10.6	14.2	62.2	60.2	0.81
Same 3 months, 1959-60	31.8	42.9	14.1	16.5	105.3	111.1	1.37
Month, 1960 :							
April	9.73	14.76	5.10	4.51	34.1	31.9	0.43
May	8.04	13.35	3.98	5.73	31.1	45.4	0.55
June	6.49	8.46	6.56	4.52	26.0	49.2	0.53
July	7.50	7.93	7.42	2.61	25.5	47.9	0.37
August	9.04	25.70	4.25	2.63	41.6	50.1	0.32
September	11.22	28.42	4.88	3.50	48.0	42.2	0.32
October	11.38	41.24	6.97	3.93	63.5	26.8	0.38
November	15.39	39.97	12.03	5.03	72.4	20.0	0.43
December	r8.18	r28.85	8.04	5.09	50.2	14.8	0.64
1961 :							
January	r6.39	r15.16	4.28	3.45	29.3	8.7	0.29
February	r5.55	r21.18	4.26	5.03	36.0	11.7	0.28
March	r2.30	r13.86	3.77	5.95	25.9	16.1	0.16
April	r2.35	r7.51	2.05	3.48	15.4	16.4	0.24
May	3.91	7.48	4.82	4.73	20.9	27.7	0.41

Period	Item	Record Changers	Record Players	Phono-grams	Phonograph Records			Tape and Wire Records number
					Single Play (b)	Extended Play (c)	33 $\frac{1}{3}$ r.p.m. (d)	
					- thousand -			
Year : 1948-49	n.a.	n.a.	n.a.	n.a.	n.a.	n.a.	n.a.	
1957-58	123.4	57.6	n.a.	4,861	1,325	2,253	3,120	
1958-59	57.3	58.0	29.1	3,736	1,282	2,113	3,198	
1959-60	49.5	48.3	24.9	3,505	1,240	2,531	4,865	
Latest 6 months, 1960-61	14.4	n.a.	9.6	1,565	328	1,289	2,415	
Same 6 months, 1959-60	22.0	26.6	13.8	1,799	566	1,320	2,217	
Latest 3 months, 1960-61	3.9	n.a.	5.0	743	160	591	1,057	
Same 3 months, 1959-60	12.1	14.2	7.0	920	274	695	1,271	
Month, 1960 :								
April	3.34	4.58	1.68	268	73	209	314	
May	3.59	3.77	2.29	308	70	214	270	
June	2.45	5.17	1.79	228	59	165	396	
July	1.96	3.79	2.39	287	65	169	285	
August	2.64	3.57	2.31	279	95	218	147	
September	3.12	4.89	2.82	277	106	219	492	
October	3.31	2.72	2.60	269	99	225	380	
November	4.59	2.22	2.79	315	105	297	300	
December	5.74	n.a.	1.73	320	62	222	700	
1961 :								
January	2.52	n.a.	1.34	216	50	190	235	
February	2.23	n.a.	1.48	286	56	286	423	
March	2.97	n.a.	1.59	305	64	203	547	
April	0.65	n.a.	1.25	r209	50	173	120	
May	0.29	n.a.	2.19	229	46	215	390	

(a) Mantel, Table and Console. (b) 78 r.p.m. and 45 r.p.m. Single Play.

(c) 45 r.p.m. Extended Play, 33 $\frac{1}{3}$ r.p.m. 7" and 16 $\frac{2}{3}$ r.p.m. 7", 10" and 12".

(d) 10" and 12".

AUSTRALIAN PRODUCTION STATISTICS

Item Period	ELECTRIC MOTORS (a) - HORSEPOWER GROUP						Total
	Under 1	1 and Under 2½	2½ and Under 5	5 and Under 10	10 and over		
	- Number -						
Year : 1948-49	245,249	26,813	14,421	7,853	4,518	298,854	
1957-58	1,065,866	33,930	10,623	8,826	8,237	1,217,482	
1958-59	1,248,166	36,216	11,207	9,197	9,303	1,314,089	
1959-60	1,528,660	60,964	16,400	10,750	10,134	1,626,908	
Latest 6 months, 1960-61	675,755	29,847	7,627	6,003	5,372	724,604	
Same 6 months, 1959-60	758,271	32,904	8,102	4,872	4,447	808,596	
Latest 3 months, 1960-61	317,137	14,254	4,168	3,461	3,068	342,088	
Same 3 months, 1959-60	393,698	17,799	4,329	2,787	2,548	421,161	
Month, 1960 :							
April	113,204	4,457	930	662	659	119,912	
May	135,962	5,653	1,857	923	838	145,233	
June	146,212	7,289	1,744	892	1,075	157,212	
July	134,053	6,183	1,597	1,038	942	143,813	
August	160,973	6,211	1,550	1,171	992	170,897	
September	175,638	8,889	1,230	819	957	187,533	
October	165,053	7,135	1,228	921	1,118	175,455	
November	196,762	7,128	1,458	1,014	1,051	207,413	
December	144,244	4,742	1,392	968	975	152,321	
1961 :							
January	98,568	5,110	913	543	479	105,613	
February	115,806	5,741	1,154	1,031	850	124,582	
March	123,786	5,558	1,487	980	996	132,807	
April	86,108	3,946	1,119	1,162	963	93,298	
May	107,243	4,750	1,562	1,319	1,109	115,983	

Item Period	INTERNAL COMBUSTION ENGINES (a) (b)				Lawn Mowers, Petrol	Cycles, made or assembled	Perambulators (c)
	Petrol and Light Oils		Diesel, Excl. Marine				
	Marine	Other than Marine					
	Two Stroke	Four Stroke					
	- Number -						
Year : 1948-49	3,081	26,194		594	91,514	106,711	
1957-58	3,130	186,325		2,556	147,253	156,657	
1958-59	4,388	290,229		1,670	249,573	149,923	
1959-60	5,121	262,912	28,476	3,212	243,649	152,672	
Latest 6 months, 1960-61	4,817	47,234	20,687	1,531	80,317	68,347	
Same 6 months, 1959-60	2,871	103,649	15,580	1,639	100,413	80,538	
Latest 3 months, 1960-61	1,863	4,187	6,044	696	9,960	34,649	
Same 3 months, 1959-60	1,210	16,691	6,940	988	17,975	41,935	
Month, 1960 :							
April	351	3,701	2,042	279	4,733	5,700	
May	292	2,392	1,814	348	1,901	5,368	
June	284	4,740	2,021	303	3,649	5,436	
July	146	10,064	2,228	299	9,604	5,208	
August	189	10,512	3,479	329	12,633	6,085	
September	656	17,487	4,217	206	19,978	6,548	
October	895	25,031	4,499	206	32,684	6,771	
November	1,436	27,649	5,853	316	42,185	8,523	
December	1,098	25,251	5,748	417	34,674	9,037	
1961 :							
January	1,032	11,179	4,635	177	23,073	2,688	
February	824	6,617	4,260	241	12,610	4,020	
March	347	1,929	2,267	143	4,138	4,344	
April	439	1,343	2,435	232	2,885	3,390	
May	1,077	915	1,342	321	2,937	3,765	

(a) Includes those made and incorporated by manufacturers in their own products.

(b) Excludes Motor Car, Motor Cycle, Truck, Tractor, Aero, etc.

(c) Includes Pushers and Strollers.

AUSTRALIAN PRODUCTION BY VEHICLE

Period	Item	MOTOR VEHICLE CHASSIS					
		CAR (a)			COMMERCIAL		
		Chassis Assembled	Cost of Components (b)		Chassis Assembled	Cost of Components (b)	
			Imported	Aust.		Imported	Aust.
Number		- £'000 -		Number		- £'000 -	
Year : 1948-49	n.a.	n.a.	n.a.	n.a.	n.a.	n.a.	n.a.
1957-58	224,074	42,467	45,723	15,470	11,480	5,515	
1958-59	224,706	38,227	52,080	15,085	12,233	6,233	
1959-60	273,364	46,287	64,165	19,519	15,959	7,174	
Latest 6 months,	115,148	13,638	32,718	8,569	6,956	3,144	
Same 6 months,	134,235	22,564	31,735	9,893	8,304	3,605	
Latest 3 months,	55,889	6,626	15,846	4,203	3,372	1,585	
Same 3 months,	75,931	12,874	17,671	5,736	4,786	2,076	
Month, 1960 :							
April	21,729	3,753	5,086	1,721	1,421	614	
May	26,814	4,608	6,184	1,948	1,713	726	
June	26,158	4,570	6,083	2,027	1,675	720	
July	26,127	4,475	6,087	1,922	1,666	669	
August	29,066	4,700	7,048	1,885	1,731	705	
September	28,475	4,013	7,395	1,784	1,455	681	
October	28,781	3,809	7,577	1,544	1,415	607	
November	30,143	3,846	8,056	1,739	1,455	690	
December	21,391	2,652	5,903	1,587	1,378	583	
1961 :							
January	16,932	2,021	4,847	1,285	996	448	
February	20,936	2,339	6,122	1,494	1,210	528	
March	19,937	2,210	5,631	1,326	1,066	470	
April	r15,869	r 1,896	r 4,426	r1,491	r1,177	r 540	
May	20,083	2,520	5,789	1,386	1,129	575	
Period	Item	MOTOR BODIES				Tyres, (Pneumatic) Motor (c)	Tubes Motor (c)
		Made, built or assembled wholly or mainly from Aust. made panels etc.		Built or assembled wholly or mainly from imported panels			
		Cars (d)	Utilities	Cars (d)	Utilities		
		- Number -					
Year : 1948-49	31,416	9,413	n.a.	n.a.	2,721	1,535	
1957-58	97,548	28,439	59,993	6,274	3,802	2,380	
1958-59	118,150	27,388	59,695	5,812	3,940	2,659	
1959-60	150,459	28,481	78,824	3,010	4,199	2,833	
Latest 6 months, 1960-61	69,052	12,377	24,946	1,274	1,995	1,329	
Same 6 months, 1959-60	72,145	13,298	39,953	1,374	1,975	1,372	
Latest 3 months, 1960-61	32,801	6,709	11,321	715	1,053	743	
Same 3 months, 1959-60	40,207	7,629	23,325	704	1,114	795	
Month, 1960 :							
April	11,319	2,312	6,543	257	323	223	
May	14,381	2,583	8,340	172	393	286	
June	14,377	2,280	7,694	275	389	272	
July	14,563	2,491	7,637	256	358	248	
August	16,348	2,737	8,702	315	439	278	
September	16,779	2,429	7,451	133	410	254	
October	15,787	2,403	7,869	68	372	246	
November	17,587	2,519	8,297	123	414	267	
December	12,562	1,721	5,471	109	314	196	
1961 :							
January	10,694	1,804	3,884	143	259	162	
February	12,995	2,143	4,270	307	369	228	
March	11,625	2,926	4,225	244	372	258	
April	8,936	1,788	3,109	175	306	220	
May	12,240	1,995	3,987	296	375	265	

(a) Includes Station Wagons, Estate Cars, Utilities, Panel Vans and similar commercial vehicles with a payload of under 1 ton. (b) Excludes costs of assembly (such as labour power, etc.). (c) Source : Department of Supply. (d) Includes Station Wagons, Estate Cars and similar vehicles from July, 1958.

AUSTRALIAN PRODUCTION STATISTICS

Period	Item	YARN OF, OR PREDOMINANTLY OF COTTON				COTTON SEWING THREAD		
		Weaving (incl. Condenser and Carpet)	Knitting (Machine and Hand)	All Other	Total	For House- hold use	For Industrial Use	
							8½-18's	Over 18's
- thousand lb. -								
Year : 1948-49	n.a.	n.a.	n.a.	26,146	n.a.	n.a.	n.a.	
1957-58	34,557	7,204	2,884	44,645	38.4	539	1,127	
1958-59	33,166	7,496	2,627	43,289	38.8	539	1,226	
1959-60	35,263	8,898	2,035	46,196	66.5	603	1,547	
Latest 6 months, 1960-61	14,684	3,405	708	18,797	25.1	254	687	
Same 6 months, 1959-60	16,994	4,245	855	22,094	29.1	293	729	
Latest 3 months, 1960-61	7,264	1,743	358	9,365	12.0	135	356	
Same 3 months, 1959-60	9,149	2,682	499	12,330	15.4	161	419	
Month, 1960 :								
April	2,859	804	165	3,828	5.17	49.0	119.3	
May	3,172	967	130	4,269	4.73	56.6	157.0	
June	3,610	997	173	4,780	4.59	54.5	164.1	
July	3,264	923	129	4,316	5.49	49.3	139.2	
August	3,569	1,013	136	4,718	6.55	60.3	148.9	
September	3,361	763	162	4,286	6.37	54.4	158.6	
October	3,141	794	171	4,106	6.46	59.2	139.2	
November	3,368	862	225	4,455	6.68	63.8	149.0	
December	2,322	518	154	2,994	4.93	43.1	111.0	
1961 :								
January	2,416	444	93	2,953	3.25	32.9	81.4	
February	2,682	700	103	3,485	4.86	43.7	139.1	
March	2,773	778	159	3,710	5.13	52.8	131.2	
April	2,197	428	98	2,723	2.97	42.4	109.9	
May	2,294	537	101	2,932	3.92	39.4	114.4	

Period	Item	WOVEN CLOTH (over 12" wide) OF, OR PREDOMINANTLY OF COTTON						
		Towel- ing (a)	Duok, Canvas, etc. (b)	Drills, Jeans, etc.	Cotton Tweeds	Denims	Other (c)	Total (a) (b)
- thousand square yards -								
Year : 1948-49	465	7,419	5,172	1,756	90	10,503	25,405	
1957-58	1,547	9,649	16,339	2,051	2,213	14,088	45,797	
1958-59	2,043	10,140	14,471	2,036	1,736	13,882	44,308	
1959-60	1,850	10,530	16,176	2,152	830	13,238	44,776	
Latest 6 months, 1960-61	3,867	5,140	6,991	618	427	7,127	24,170	
Same 6 months, 1959-60	(d)	5,167	6,451	1,084	414	6,468	(d)	
Latest 3 months, 1960-61	2,024	2,746	3,481	193	210	3,460	12,114	
Same 3 months, 1959-60	(d)	2,885	3,819	660	212	3,829	(d)	
Month, 1960 :								
April	152	915	1,247	226	65	1,148	3,753	
May	197	910	1,314	255	83	1,357	4,116	
June	201	1,225	1,649	288	62	1,225	4,650	
July	840	938	1,647	228	58	1,322	5,033	
August	966	1,121	1,547	160	64	1,557	5,415	
September	891	1,062	1,371	114	67	1,551	5,056	
October	828	951	1,252	123	75	1,612	4,841	
November	967	1,079	1,345	140	99	1,644	5,274	
December	658	763	987	126	66	1,178	3,778	
1961 :								
January	459	708	1,216	176	82	1,116	3,757	
February	726	923	1,307	123	69	1,373	4,521	
March	777	1,106	1,206	65	66	1,299	4,519	
April	595	753	1,163	60	68	1,031	3,670	
May	652	887	1,112	68	76	1,130	3,925	

(a) From July, 1960 includes towelling for towels, baby napkins and other purposes. Previous figures exclude towels. (b) Includes Flax Canvas up to June, 1959.

(c) Includes Sheeting, Calico, Shirting, Dress Fabrics, Upholstery and Furnishing Fabrics and Other Close Weave Piece Goods but excludes Open Weave Fabrics, e.g. Tyre Cord Fabric. (d) Not available on a comparative basis.

AUSTRALIAN PRODUCTION STATISTICS

Period	Item	TOWELS		Scoured and Carbonized Wool (a)	Wool Tops (a)	Yarn (a), Wholly or predominantly		Rugs
		Up to and incl. 22" wide	Over 22" wide			Wool-Worsted	Woollen	
		- '000 dozen -			- million lb. -		'000	
Year : 1948-49		389		162	36.0	28.3	22.4	121
1957-58		288	519	154	39.3	21.5	24.2	177
1958-59		261	498	158	41.0	18.9	21.7	133
1959-60		320	544	174	47.7	24.0	26.6	174
Latest 6 months, 1960-61		92	211	75.3	19.4	10.7	10.9	77.8
Same 6 months, 1959-60		150	251	84.1	22.1	11.7	12.7	80.8
Latest 3 months, 1960-61		47	110	38.3	10.1	5.5	5.6	47.5
Same 3 months, 1959-60		84	141	44.1	12.0	6.4	7.1	49.3
Month, 1960 :	April	27.9	42.4	12.8	3.50	1.86	2.16	17.1
	May	25.6	48.0	15.4	4.23	2.21	2.43	20.1
	June	22.8	50.6	16.1	4.54	2.25	2.57	25.5
	July	17.6	48.1	14.0	3.68	1.91	2.33	18.7
	August	19.0	56.8	13.5	3.93	2.20	2.76	24.4
	September	18.6	48.5	12.1	3.75	2.09	2.54	13.4
	October	18.8	41.5	13.4	3.58	2.11	2.39	13.3
	November	24.5	51.2	14.5	4.07	2.47	2.70	18.6
	December	15.8	37.6	12.8	2.98	1.72	1.73	11.3
1961 :	January	10.8	24.2	10.6	2.82	1.45	1.51	6.1
	February	17.9	38.3	13.6	3.51	1.99	2.06	12.9
	March	17.2	41.9	13.4	3.39	2.13	2.00	13.9
	April	13.5	33.4	11.3	2.83	1.59	1.59	15.0
	May	16.7	35.1	13.6	3.91	1.82	1.97	18.6

Period	Item	Woven Cloth (over 12" wide) of Wool					Total	
		Blankets (incl. Cot)		Wool-Worsted		Woollen		
		'000	'000 sq.yds.	Pure	Mixtures (b)	Pure		Mixtures (c)
		- thousand square yards -						
Year : 1948-49		1,378	n.a.	n.a.	n.a.	n.a.	n.a.	41,976 (d)
1957-58		1,855	8,624	11,871	2,125	11,777	5,946	31,719
1958-59		1,705	8,092	10,877	1,720	9,988	4,681	27,266
1959-60		1,939	9,144	11,968	2,350	10,517	5,335	30,170
Latest 6 months, 1960-61		890	4,265	4,525	794	4,329	2,259	11,907
Same 6 months, 1959-60		959	4,482	5,680	1,070	5,413	2,590	14,753
Latest 3 months, 1960-61		520	2,474	2,367	463	2,106	1,050	5,986
Same 3 months, 1959-60		588	2,732	3,074	596	2,844	1,347	7,861
Month, 1960 :	April	174	795	897	152	832	393	2,274
	May	213	998	1,000	220	851	433	2,504
	June	221	1,028	1,079	218	829	442	2,568
	July	176	825	981	169	788	353	2,291
	August	187	858	1,128	208	873	488	2,697
	September	146	713	1,022	161	925	439	2,547
	October	159	739	908	165	947	486	2,506
	November	177	827	1,056	180	1,063	639	2,938
	December	117	565	689	116	686	432	1,923
1961 :	January	90	435	637	85	614	309	1,645
	February	163	791	r832	r130	r923	468	r2,353
	March	188	898	r871	r173	889	445	r2,378
	April	r145	672	r675	r131	r636	314	r1,756
	May	187	904	821	159	581	291	1,852

(a) Includes that further processed in the producing mills.

(b) Predominantly wool-worsted.

(c) Predominantly woollen.

(d) Excludes wool and rayon mixtures.

AUSTRALIAN PRODUCTION STATISTICS

Item	Rayon Woven Fabric (a)		Synthetic Fibre Woven Fabric (a)		Hats, Fur and	Footwear (e)	
	Pure	Mixtures (b)	Pure	Mixtures (c)	Wool Felt (d)	Boots, Shoes and Sandals	Slippers (f)
Period	- thousand square yards -				'000 doz.	- '000 pairs -	
Year : 1948-49	5,706	961	n.a.	n.a.	335	17,220	8,832
1957-58	21,211	1,878	2,162	1,591	93	21,395	9,153
1958-59	16,507	1,205	3,075	3,116	90	24,062	8,535
1959-60	16,574	1,394	4,467	2,950	91	25,414	9,717
Latest 6 months, 1960-61	9,456	378	2,802	1,791	36.6	10,387	5,104
Same 6 months, 1959-60	7,437	741	2,246	1,264	46.7	11,052	4,835
Latest 3 months, 1960-61	4,839	172	1,524	1,053	19.8	5,705	3,005
Same 3 months, 1959-60	3,928	431	1,355	698	26.5	5,975	2,998
Month, 1960 : April	1,243	151	470	195	8.4	1,762	946
May	1,455	160	482	261	9.0	2,060	1,088
June	1,900	236	606	304	7.6	2,184	996
July	1,626	193	480	313	6.0	2,070	851
August	1,652	143	521	362	6.9	2,493	951
September	1,569	153	540	386	6.8	2,446	836
October	1,733	110	510	369	6.8	2,336	820
November	1,850	105	542	352	8.4	2,462	918
December	1,519	84	395	235	4.5	1,673	651
1961 : January	1,426	53	387	190	6.6	1,219	552
February	1,672	169	496	313	5.7	1,790	896
March	1,628	57	519	290	6.8	2,068	1,033
April	1,599	63	455	333	6.1	1,658	907
May	1,612	52	550	430	6.9	1,979	1,065

Item	HOSIERY						
	Women's			Men's	Children's (Sizes 3-10)	Infant's (Sizes 0-3)	Total
	Full Length		Other than Full Length				
	Full Fashioned and Circular						
Period	Synthetic Fibre	Other					
	- thousand dozen pairs -						
Year : 1948-49	219	1,318		1,275	705		3,517
1957-58	2,136	82	299	1,472	724	101	4,814
1958-59	2,406	52	227	1,311	746	95	4,837
1959-60	2,499	50	262	1,562	780	137	5,290
Latest 6 months, 1960-61	1,119	21.6	90	534	315	37.8	2,118
Same 6 months, 1959-60	1,145	24.2	127	670	368	59.6	2,394
Latest 3 months, 1960-61	576	12.1	46	278	152	16.5	1,081
Same 3 months, 1959-60	639	14.4	73	368	201	31.1	1,327
Month, 1960 : April	191	4.5	22.6	109	59.4	8.8	395
May	220	5.4	24.6	131	71.2	12.5	465
June	239	6.4	25.8	142	69.6	12.3	495
July	233	5.4	25.9	135	72.7	12.6	485
August	254	5.5	27.7	159	85.2	14.2	546
September	262	4.5	22.9	151	76.3	13.1	530
October	235	4.7	21.3	156	62.3	13.1	492
November	255	4.9	20.8	149	73.8	11.4	515
December	192	4.0	14.9	87	55.5	8.2	362
1961 : January	144	2.2	10.6	64	44.6	6.7	272
February	207	3.3	18.0	105	63.3	6.4	403
March	216	4.1	17.9	110	60.0	5.2	413
April	151	3.9	12.8	74	40.2	15.6	288
May	209	4.1	15.6	94	51.6	5.7	380

(a) Over 12" wide. (b) Rayon mixed with any other fibre up to 1955-56 - thereafter mixtures predominantly Rayon. (c) Predominantly synthetic fibre. (d) Includes Hoods and Capelins. (e) Other than Sandshoes, Goggles, Gum and Wading etc., Boots of Rubber. (f) Includes all Infants' Soft Soled Nursery Footwear.

AUSTRALIAN PRODUCTION STATISTICS

MEN'S, YOUTHS' AND BOYS' CLOTHING (CIVILIAN DAY WEAR)

Period	Item	Short Length Coats (a)				Full and Three-quarter Length Coats		Dust Coats
		Men's and Youths'			Boys'	Men's, Youths', and Boys'		Men's and Youths'
		Suit Coats (b) (c)	Sports Coats (a) (d)	Other (e)	Blazers	Overcoats and Raincoats (f)	Plastic Raincoats	
- Thousand -								
Year : 1949-50	1,028	n.a.		n.a.	n.a.	n.a.	126	
1957-58	727	760		76	284	n.a.	277	
1958-59	728	747		60	242	659	319	
1959-60	776	909		72	265	739	319	
Latest 6 months, 1960-61	360.9	398.0		39.3	194.2	404.7	159.6	
Same 6 months, 1959-60	358.9	431.6		40.0	168.3	416.0	147.5	
Latest 3 months, 1960-61	195.2	232.9		19.8	130.2	251.1	91.4	
Same 3 months, 1959-60	194.3	248.4		19.0	112.0	253.5	88.6	
Month, 1960 :								
April	61.6	75.8		6.1	32.8	75.4	27.1	
May	65.6	90.2		6.6	38.2	109.7	27.8	
June	65.4	84.8		7.1	35.3	87.2	31.4	
July	63.0	31.7	34.0	5.8	28.0	r51.6	r31.4	
August	78.7	42.1	38.7	4.6	23.7	r40.2	r35.6	
September	79.0	45.4	39.1	3.6	20.1	r39.5	r34.7	
October	74.6	43.3	37.8	4.1	15.5	r36.2	r34.7	
November	83.6	44.7	35.8	4.4	17.9	r57.3	r33.7	
December	66.5	26.9	30.9	7.6	14.4	r48.9	r25.7	
1961 :								
January	34.5	16.9	19.2	4.5	14.1	r40.7	r11.2	
February	64.7	28.4	42.8	7.4	35.5	r64.0	r31.3	
March	66.2	32.1	54.3	6.5	r44.7	r74.8	r37.2	
April	63.0	24.1	46.0	6.3	40.3	r85.7	r25.3	
May	66.0	31.7	44.7	7.0	45.2	90.6	28.9	
Period	Item	Trousers				Overalls		Jodhpurs and Riding Breeches
		Men's and Youths'			Boys'	Men's and Youths'		
		Sports (e)	Work	Jeans	Jeans	Men's and Youths'	Boys'	
- Thousand -								
Year : 1949-50	2,836	1,495		n.a.	n.a.	n.a.	n.a.	
1957-58	2,592	2,071		670	1,440	280	207	
1958-59	2,714	2,132		703	1,309	279	167	
1959-60	3,261	2,424		855	1,534	324	209	
Latest 6 months, 1960-61	1,622	931		462	721	86.9	147.4	
Same 6 months, 1959-60	1,497	1,170		430	696	206.9	148.9	
Latest 3 months, 1960-61	846	492		283	388	53.4	89.9	
Same 3 months, 1959-60	801	657		271	385	113.7	101.2	
Month, 1960 :								
April	237	190		82.3	123	35.0	31.8	
May	270	225		97.7	123	33.5	34.3	
June	274	203		102.5	148	17.0	26.0	
July	284	172	40	68.8	139	5.7	5.3	
August	345	163	48	71.5	155	7.9	6.4	
September	366	156	46	69.8	172	6.9	3.2	
October	362	160	37	66.5	154	6.3	3.3	
November	417	171	51	65.1	166	11.0	3.4	
December	307	117	27	67.7	140	13.4	13.3	
1961 :								
January	181	94	16	30.6	62	7.8	13.6	
February	288	152	33	81.5	131	12.3	30.6	
March	315	151	28	98.1	139	20.5	34.9	
April	242	113	r25	81.1	113	23.7	31.5	
May	289	144	31	103.4	136	9.2	23.5	

(a) Excludes dust-coats. (b) Prior to July, 1960 figures represent production of suits (2 and 3 piece). (c) For periods since July, 1957 the production of smaller establishments has been estimated from the returns of a representative sample. (d) Includes Blazers. (e) Includes Reefers, Bermuda, Safari, Lumber and Golf Jackets. (f) Excludes Leather and Plastic.

AUSTRALIAN PRODUCTION STATISTICS

Period	Item	FOUNDATION GARMENTS				UNDERWEAR (b)		
		Corsets		Corselets	Brassieres	Men's and Boys'	Women's and Girls'	Infants' and Baby Wear
		Roll-on Girdles	Other (a)					
		- thousand dozen -						
Year : 1948-49		125.7		8.3	264.8	3,168		
1957-58		57.0	112.3	8.3	477.6	1,818	2,895	66
1958-59		47.4	118.8	8.4	494.5	1,854	2,971	89
1959-60		61.4	130.0	7.8	517.6	1,877	3,145	96
Latest 6 months, 1960-61		20.0	65.7	4.57	254.8	838	1,494	51.6
Same 6 months, 1959-60		24.3	60.1	3.83	263.4	861	1,456	41.2
Latest 3 months, 1960-61		11.0	34.1	2.74	145.8	418	776	28.4
Same 3 months, 1959-60		13.9	32.5	2.44	148.4	469	770	23.1
Month, 1960 :	April	3.58	8.93	0.62	44.1	133	218	6.22
	May	5.69	11.21	0.94	49.2	158	267	8.44
	June	5.62	13.03	1.10	46.1	181	290	10.47
	July	5.07	13.68	0.55	43.3	164	301	9.67
	August	5.48	17.14	0.67	44.4	202	328	12.07
	September	5.01	16.52	0.66	38.6	178	299	11.48
	October	4.44	15.53	0.85	39.9	183	308	9.97
	November	4.36	18.25	0.85	47.9	217	361	13.80
	December	3.14	13.46	0.59	35.6	145	268	9.17
1961 :	January	2.35	7.27	0.49	27.4	104	166	5.58
	February	3.53	10.87	0.75	46.0	171	204	8.46
	March	3.94	12.71	0.69	51.7	167	278	11.01
	April	3.47	10.20	0.62	42.7	113	221	7.89
	May	3.57	11.16	1.43	51.4	138	277	9.46

Period	Item	NIGHTWEAR (b)			CARDIGANS, PULLOVERS AND SIMILAR GARMENTS (c)			
		Men's and Boys' Pyjama Suits	Women's and Girls'		Infants' and Baby Wear	Men's and Boys'	Women's and Girls'	Infants' and Baby Wear
			Pyjamas	Night-dresses				
		- thousand dozen -						
Year : 1948-49		219	270		n.a.	569		
1957-58		328	243	218	31	350	817	91
1958-59		365	269	223	31	328	765	83
1959-60		342	280	246	40	394	835	121
Latest 6 months, 1960-61		176	161	122	31.1	197	372	51.5
Same 6 months, 1959-60		167	165	126	20.7	228	423	59.9
Latest 3 months, 1960-61		102	85	66	16.2	113	197	29.5
Same 3 months, 1959-60		103	88	74	12.4	139	245	33.5
Month, 1960 :	April	28.2	26.8	21.1	3.70	41.9	74.5	11.24
	May	37.1	24.7	25.1	3.76	48.0	86.7	10.91
	June	33.5	18.6	20.5	4.25	40.1	73.2	13.19
	July	28.2	17.2	19.5	3.76	25.5	67.4	10.98
	August	30.0	22.5	20.2	4.17	26.0	74.7	11.39
	September	26.8	23.2	22.8	3.74	24.8	72.5	8.57
	October	25.4	18.1	22.4	3.03	25.4	70.8	7.50
	November	26.1	27.5	25.3	4.20	28.1	72.9	8.71
	December	24.9	22.4	18.1	3.48	25.4	55.9	6.71
1961 :	January	16.0	18.0	13.9	6.26	21.6	49.3	6.32
	February	33.0	35.9	23.8	5.13	37.9	69.1	8.95
	March	38.9	37.6	24.9	5.83	40.4	70.9	10.79
	April	29.9	21.7	21.1	4.30	35.7	58.8	8.89
	May	33.4	25.3	20.0	6.05	36.4	67.5	9.85

(a) Includes Surgical Corsets and Belts.

(b) Knitted or made from knitted or woven fabric.

(c) Knitted only.

AUSTRALIAN PRODUCTION STATISTICS

Period	Item	BATHING SUITS AND TRUNKS (a)			SHORTS (b)		GLOVES (c)	
		Men's and Boys'	Women's and Girls'	Men's and Boys' (d)	Men's and Youths'	Boys' (e)	Dress	Work
		- thousand dozen -					- dozen pairs -	
Year : 1948-49		(f)856	n.a.	n.a.	n.a.	n.a.	65,845	157,230
1957-58		1,530	76	95	154	272	80,124	290,384
1958-59		1,614	66	85	185	290	54,508	310,007
1959-60		1,836	98	97	195	338	58,917	357,430
Latest 6 months, 1960-61		703	24.4	25.7	76.2	118.3	16,693	173,479
Same 6 months, 1959-60		751	29.3	24.7	88.0	127.2	27,409	162,206
Latest 3 months, 1960-61		380	13.1	12.1	38.2	50.5	9,434	87,950
Same 3 months, 1959-60		407	15.1	11.1	43.6	53.5	15,867	88,574
Month, 1960 :	April	119	4.1	3.9	12.4	17.8	4,865	25,272
	May	147	6.7	4.8	14.3	18.8	5,610	30,158
	June	165	9.5	9.3	13.5	23.5	4,743	33,440
	July	173	10.1	14.9	18.0	30.2	4,781	32,823
	August	210	12.4	18.0	20.5	38.2	5,253	37,512
	September	208	12.8	20.5	23.2	36.2	5,449	36,036
	October	192	12.8	19.0	20.3	37.7	4,523	35,360
	November	203	13.4	16.4	24.2	42.7	4,108	39,890
	December	128	6.6	8.2	15.0	34.2	2,641	28,738
1961 :	January	73	1.7	2.4	8.3	13.9	1,467	23,321
	February	122	3.0	3.0	14.7	19.7	3,151	33,470
	March	134	3.3	3.2	15.4	17.4	3,804	33,587
	April	107	3.2	3.5	10.1	13.7	2,410	23,544
	May	139	6.6	5.4	12.7	19.4	3,220	30,819

Period	Item	HIDES AND SKINS USED FOR TANNING			MATTRESSES			
		Cattle Hides	Calf Skins	Sheep Skins (g)	Woven Wire, Link Mesh and Spring (h)	Inner Spring	Rubber	Soft Filled and Other
		- thousand -						
Year : 1948-49		2,485	1,306	4,060	202	155	456	
1957-58		2,673	1,187	2,610	349	569	57	244
1958-59		2,519	917	2,596	366	581	69	222
1959-60		2,441	813	2,855	400	618	83	207
Latest 6 months, 1960-61		1,029	394	1,381	193	283	37.4	97
Same 6 months, 1959-60		1,102	367	1,321	200	317	39.5	104
Latest 3 months, 1960-61		566	223	748	104	144	20.0	48
Same 3 months, 1959-60		606	224	736	105	167	21.0	50
Month, 1960 :	April	167	73	208	32.6	49.4	5.9	15.4
	May	208	80	274	34.0	55.0	7.4	17.3
	June	217	72	268	32.8	45.8	7.0	15.6
	July	212	86	237	34.5	49.2	7.4	15.5
	August	219	69	307	32.5	57.7	7.0	18.7
	September	203	80	260	38.0	51.7	6.9	20.6
	October	202	83	244	38.8	49.5	7.7	18.3
	November	191	92	283	40.2	55.2	7.5	18.7
	December	115	55	190	32.9	52.8	5.6	18.7
1961 :	January	155	58	177	22.0	36.5	5.2	15.5
	February	193	58	266	34.4	49.7	6.6	14.5
	March	198	87	280	33.8	52.3	6.3	18.5
	April	170	80	208	33.1	41.1	5.9	14.6
	May	198	56	260	36.6	50.9	7.8	14.9

(a) Knitted or made from Knitted or Woven Fabric. (b) Leisure, Walk and Work Shorts only. (c) Other than Rubber. (d) Includes swim shorts. (e) Includes Knickers. (f) Excludes Knitted. (g) Includes Pelts. (h) Includes Mattresses made and incorporated in Folding Beds and Stretchers.

AUSTRALIAN PRODUCTION STATISTICS

Period	Item	MEAT (Bone-in weight)				Bacon and Ham (a)	Canned Meat (b)	Canned Fish (c)
		Beef and Veal	Mutton and Lamb	Pigmeat	Total Meat			
		- thousand tons -				tons	tons	'000 lb.
Year : 1948-49		577	320	94	991	41,584	44,976	10,886
1957-58		791	422	102	1,315	36,667	79,764	7,848
1958-59		906	492	102	1,500	38,671	73,950	7,782
1959-60		752	573	101	1,426	r36,533	65,740	8,133
Latest 6 months, 1960-61		304	282	55	641	18,256	25,738	5,776
Same 6 months, 1959-60		342	291	51	684	18,353	29,849	5,764
Latest 3 months, 1960-61		173	135	28	336	8,812	13,469	3,137
Same 3 months, 1959-60		195	134	27	356	8,681	15,439	3,711
Month, 1960 :	April	61.5	43.7	8.4	114	2,782	6,247	1,166
	May	70.9	40.7	8.5	120	r2,851	4,713	646
	June	70.6	40.9	8.4	120	r2,902	5,817	578
	July	64.3	38.1	8.1	111	2,665	4,357	274
	August	53.8	39.3	8.3	101	2,855	3,320	314
	September	50.8	48.2	9.1	108	3,181	3,329	209
	October	43.2	59.1	9.2	108	3,111	2,966	249
	November	43.2	58.4	9.1	111	3,967	3,997	781
	December	41.1	53.0	9.7	104	4,637	4,656	795
1961 :	January	44.0	47.1	8.2	99	2,272	3,811	779
	February	46.3	46.9	8.5	102	2,535	3,802	1,065
	March	53.1	49.3	9.6	112	2,725	4,040	1,251
	April	r50.5	41.4	8.7	r 101	2,866	3,483	1,227
	May	68.9	44.2	9.6	123	3,221	5,946	659

Period	Item	CEREAL PRODUCTS						
		Wheat Products			Oatmeal Rolloled Oats (e)	Starch Edible (f)	Malt (all types)	Refined Sugar (g)
		Flour (d)	Bran	Pollard				
		- thousand short tons -			'000 tons	'000 cwt.	'000 bush.	'000 tons
Year : 1948-49		1,679	319	355	23.1	280	5,150	(h) 428
1957-58		1,373	230	291	13.8	444	8,373	(h) 493
1958-59		1,364	229	292	14.5	407	8,241	(h) 519
1959-60		1,460	233	301	15.2	500	8,679	(h) 540
Latest 6 months, 1960-61		750	124	160	8.6	227	4,618	252
Same 6 months, 1959-60		676	106	139	8.1	227	4,221	276
Latest 3 months, 1960-61		387	64	84	6.9	123	2,580	127
Same 3 months, 1959-60		349	54	72	6.7	120	2,322	146
Month, 1960 :	April	104	16.2	21.4	1.99	35.1	764	44.4
	May	128	19.4	26.4	2.99	42.0	764	48.0
	June	126	19.2	25.3	2.13	45.1	711	38.9
	July	130	r21.3	r27.0	1.70	42.5	714	39.4
	August	140	r22.7	r29.1	1.18	42.7	724	43.8
	September	142	r23.1	r29.2	0.78	49.1	769	47.0
	October	134	r22.5	r27.9	0.65	39.2	792	48.0
	November	143	r23.5	r29.7	0.53	45.4	785	47.5
	December	113	r19.0	r23.7	0.43	35.2	697	42.6
1961 :	January	122	r20.2	r25.5	0.54	26.7	666	42.3
	February	128	r21.2	r27.3	0.70	42.5	675	40.6
	March	129	r22.0	r27.7	1.74	45.9	843	43.9
	April	114	r19.0	r24.5	2.44	31.4	848	40.0
	May	144	23.0	31.4	2.72	45.7	889	43.0

(a) Cured weight. (b) Excludes Canned Baby Foods, Rabbit and Poultry. (c) Includes Fish Leaf, Fish Cakes, etc., but excludes Fish Paste, Canned Oysters and Shellfish. (d) Includes Wheatmeal for Baking and Sharps. (e) Excludes that for Stock Food. (f) Cornflour and Edible Starch from Wheat. (g) Source : Department of Customs and Excise from April, 1960. (h) Year ended March.

AUSTRALIAN PRODUCTION STATISTICS

Period	Item	Aerated Waters	Biscuits (a)	CONFECTIONERY		MARGARINE		Coconut Oil (Unref.)
				Chocolate Base	Other	Table	Other	
		'000 gal.	- million lb. -				- tons -	
Year : 1948-49		44,339	107.1	67.6	69.9	8,529	20,789	17,081
1957-58		69,165	165.6	63.8	88.9	16,086	20,990	22,354
1958-59		69,285	172.3	66.3	92.5	16,072	23,676	22,306
1959-60		75,039	176.7	73.6	95.0	15,988	25,895	18,182
Latest 6 months, 1960-61		47,155	86.6	36.3	42.6	7,440	12,972	9,136
Same 6 months, 1959-60		45,449	84.0	33.6	42.6	7,606	11,606	8,160
Latest 3 months, 1960-61		16,767	46.1	23.5	23.2	4,122	7,731	5,136
Same 3 months, 1959-60		15,663	44.8	21.9	22.8	4,402	6,736	4,674
Month, 1960 :	April	5,426	13.4	6.71	6.41	1,342	2,374	1,179
	May	3,728	15.8	8.38	8.11	1,676	2,228	1,643
	June	3,154	14.9	8.90	8.29	1,433	2,693	1,791
	July	3,092	16.3	7.91	8.05	1,714	2,816	1,892
	August	4,622	15.7	7.58	9.18	1,696	2,722	1,785
	September	5,457	16.4	6.52	9.08	1,285	2,393	1,574
	October	6,679	14.6	6.36	8.57	1,323	2,019	1,431
	November	7,842	15.3	6.05	9.36	1,445	2,366	1,732
	December	10,529	14.8	4.06	7.43	1,237	2,326	1,639
1961 :	January	10,983	11.6	3.19	4.65	741	940	1,132
	February	8,876	14.1	5.52	7.30	1,340	1,975	1,229
	March	7,437	15.9	7.17	7.81	1,366	2,640	1,903
	April	5,165	14.0	6.83	6.72	1,264	2,455	1,348
	May	4,165	16.2	9.53	8.68	1,492	2,636	1,885

Period	Item	Jam	Preserved Fruit	Preserved Vegetables	Quick Frozen Vegetables	Canned Spag-hetti	Tomato Sauce	Tomato Soup
Year : 1948-49		132,951	165,918	51,279	n.a.	n.a.	25,817	34,367
1957-58		107,773	349,411	87,044	(b)13,846	13,674	21,681	18,571
1958-59		78,234	312,563	66,883	(a)13,386	18,660	22,876	21,892
1959-60		84,545	341,187	81,596	(a)23,455	22,268	27,769	20,616
Latest 6 months, 1960-61		45,604	264,901	47,932	15,481	9,050	20,472	22,672
Same 6 months, 1959-60		51,414	306,690	45,167	19,112	10,106	17,732	15,796
Latest 3 months, 1960-61		21,774	169,020	25,648	4,512	4,867	14,379	16,779
Same 3 months, 1959-60		21,066	173,663	18,559	3,776	6,621	8,756	7,386
Month, 1960 :	April	5,054	34,618	5,452	770	2,391	2,328	1,026
	May	6,568	10,620	6,892	340	2,795	1,231	1,357
	June	5,672	8,106	6,319	355	2,115	1,023	1,385
	July	6,498	7,261	4,983	384	2,602	1,203	860
	August	8,120	12,543	5,344	384	2,082	1,464	624
	September	5,653	11,360	5,235	145	1,938	1,274	512
	October	4,785	4,865	7,692	624	1,831	1,469	102
	November	4,546	2,083	11,979	2,672	2,133	1,623	296
	December	4,456	5,427	10,786	5,512	1,700	1,028	94
1961 :	January	11,960	20,053	4,262	3,041	1,603	1,203	210
	February	7,414	70,401	7,236	2,416	880	3,862	5,589
	March	7,758	115,864	9,118	2,096	1,297	7,867	13,013
	April	5,303	45,230	8,141	1,527	1,170	4,716	13,109
	May	8,713	7,926	8,389	889	2,400	1,796	657

(a) Excludes Ice Cream Cones and Wafers and Dog Biscuits.

(b) Peas, 10,131,193 lb.; Beans, 2,539,758 lb.; Other Vegetables, 1,174,590 lb.

(c) Peas, 10,188,477 lb.; Beans, 1,880,517 lb.; Other Vegetables, 1,317,367 lb.

(d) Peas, 17,489,321 lb.; Beans, 4,184,568 lb.; Other Vegetables, 1,781,562 lb.

AUSTRALIAN PRODUCTION STATISTICS

Period	Item	Whole Milk	Butter	Cheese	Processed Whole Milk Products	Ice Cream	Beer	Tobacco, Cigars and Cigarettes
		(a)	(b)	(b)	(b)	(c)	(d)	(e)
		mill. gal.	- '000 tons -			'000 gal.	mill. gal.	mill. lb.
Year : 1948-49		1,209	161	43.2	91.0	14,524	144	29.1
1957-58		1,264	173	35.9	97.4	16,519	226	51.1
1958-59		1,370	191	43.4	94.8	16,003	224	52.5
1959-60		1,402	195	44.5	102.8	16,398	237	54.4
Latest 6 months, 1960-61		653	88	20.6	48.6	10,447	124	27.7
Same 6 months, 1959-60		696	97	20.5	50.4	9,458	123	27.5
Latest 3 months, 1960-61		259	31	7.4	18.7	3,908	57	13.7
Same 3 months, 1959-60		248	30	6.6	16.4	3,430	56	13.6
Month, 1960 :	April	76.8	9.1	1.95	5.00	1,221	17.7	4.28
	May	65.2	6.8	1.67	3.90	738	16.7	4.77
	June	60.5	6.0	1.76	3.83	670	15.4	4.52
	July	69.3	7.2	2.32	4.36	769	16.2	4.44
	August	100.2	12.7	3.81	7.31	1,122	20.4	5.95
	September	128.6	17.9	5.00	9.41	1,411	20.7	3.68
	October	155.5	22.6	6.18	12.04	1,587	20.6	4.39
	November	162.1	24.1	6.17	12.08	1,686	23.9	5.02
	December	157.7	23.6	5.58	11.60	2,188	24.0	5.40
1961 :	January	133.9	19.3	4.42	10.38	2,465	23.1	4.18
	February	102.4	13.5	3.21	7.95	1,886	20.4	4.43
	March	102.3	13.4	2.94	7.88	1,741	21.4	4.67
	April	80.6	9.4	2.16	5.44	1,185	17.9	4.28
	May	76.0	8.4	2.31	5.37	982	17.4	4.74

Period	Item	SQUARED					News-print	Batteries - (Starting, Lighting, Ignition)
		Racquet Frames	Golf Clubs	Balls				
				Cricket (Leather)	Golf	Tennis		
		- dozen -					'000 tons	'000
Year : 1948-49		23,677	16,509	14,094	187,990	285,241	30.3	n.a.
1957-58		17,616	13,365	18,138	199,599	225,080	81.1	1,253
1958-59		16,063	14,832	16,511	196,761	210,782	83.1	1,312
1959-60		17,204	16,150	16,105	243,592	226,088	88.5	1,512
Latest 6 months, 1960-61		4,369	13,979	6,953	118,058	72,692	41.3	660
Same 6 months, 1959-60		7,684	8,630	5,874	111,246	97,578	42.9	757
Latest 3 months, 1960-61		2,237	8,271	3,685	68,859	33,725	20.6	368
Same 3 months, 1959-60		4,374	5,317	2,975	61,743	49,383	22.0	452
Month, 1960 :	April	1,197	1,447	640	18,053	14,552	6.79	133
	May	1,582	2,173	1,108	24,017	16,959	7.57	166
	June	1,608	1,599	1,200	21,933	14,561	7.47	156
	July	1,477	1,790	1,575	19,274	12,508	7.81	150
	August	1,740	2,080	2,030	21,546	11,878	7.99	148
	September	1,540	1,737	2,245	17,912	15,186	7.43	134
	October	1,442	1,931	1,842	19,075	20,245	7.94	119
	November	1,350	2,240	1,882	20,468	22,670	7.98	128
	December	892	1,741	1,357	14,445	17,510	5.94	100
1961 :	January	491	1,343	772	15,154	10,568	7.69	79
	February	749	2,624	1,139	19,600	10,889	7.11	113
	March	724	2,733	1,043	23,069	11,458	6.31	123
	April	718	2,324	874	19,673	9,656	7.22	104
	May	795	3,214	1,768	26,117	12,611	7.02	141

(a) For all purposes - estimated. (b) Factory only - Source: Dairy Produce Equalisation Committee. (c) Excludes Substitutes and Water Ices. (d) From 1959-60 onwards represents the quantity produced (incl. Waste) as recorded by Department of Customs and Excise. (e) From 1959-60 onwards represents the quantity on which Excise Duty was paid: Source - Department of Customs and Excise.

MONTHLY PRODUCTION : AUSTRALIA

1938-39, 1959-60, 1960-61



MONTHLY AVERAGE 1938-39



MONTHLY AVERAGE 1959-60

— 1960-61

- - - 1959-60

