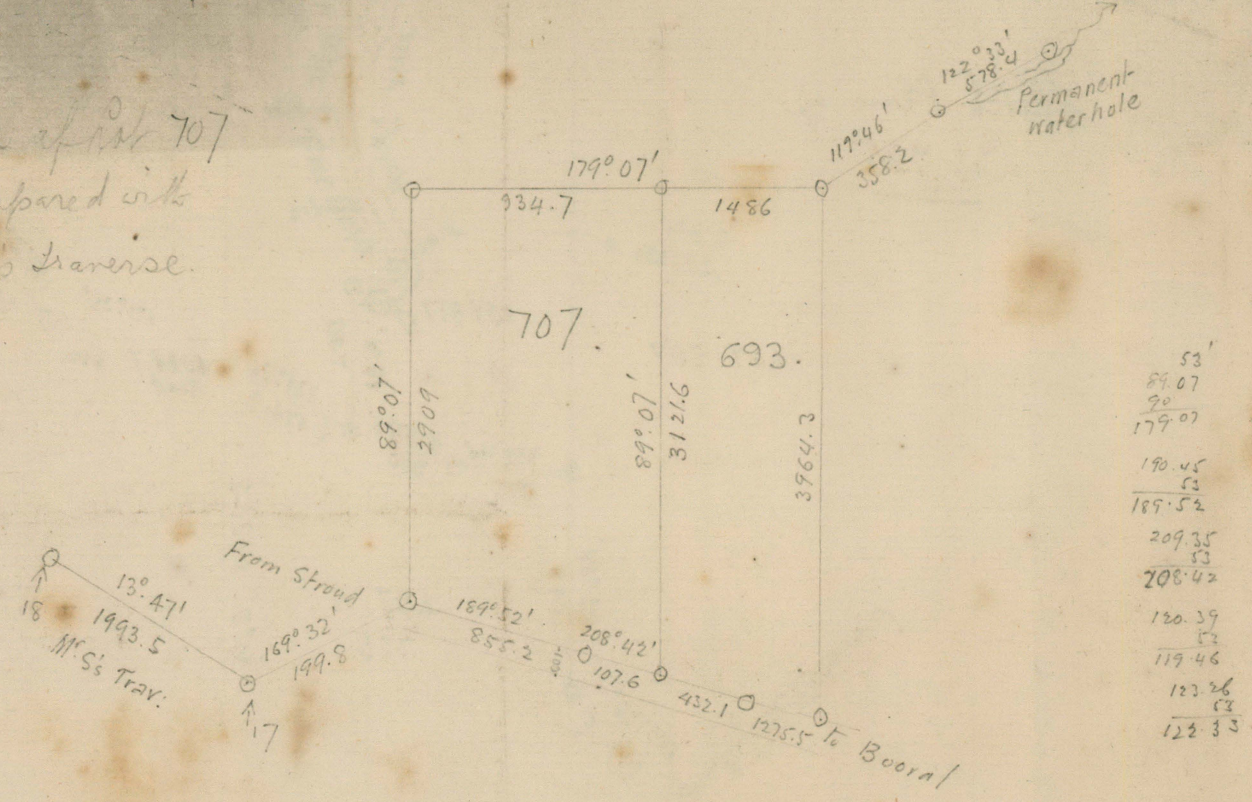


over

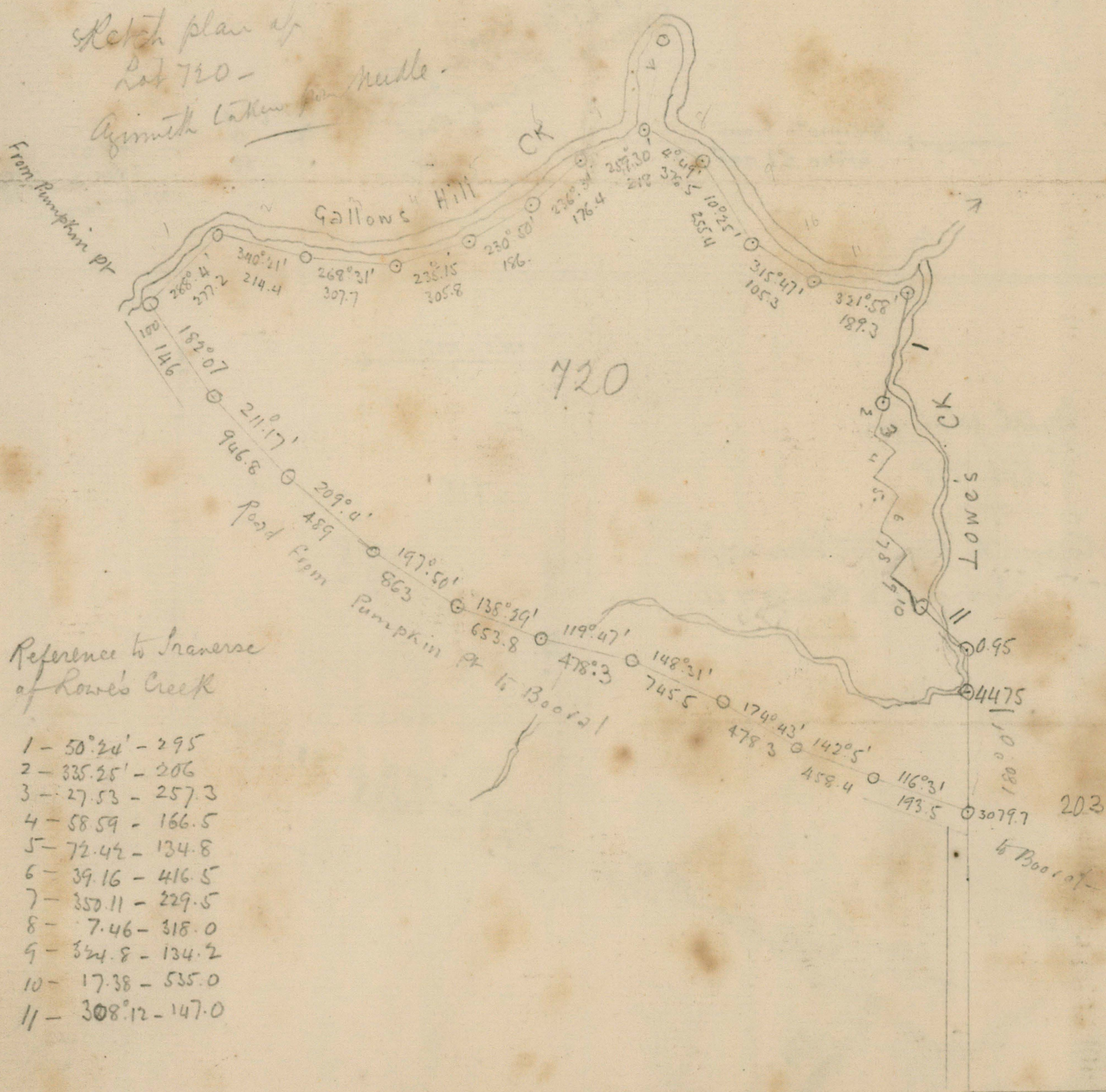
azimuth from Stone 418-1/17

Sketch plan of lot 707
Azimuth compared with
Mr. Semmes's traverse.



53
89.07
90
179.07
190.45
53
189.52
209.35
53
208.42
120.39
52
119.46
123.26
52
122.33

Sketch plan of
Lot 720 -
Azimuth taken from
needle.



Reference to traverse
of Lowes Creek

- 1 - 50°24' - 295
- 2 - 335°25' - 206
- 3 - 27°53' - 257.3
- 4 - 58°59' - 166.5
- 5 - 72°42' - 134.8
- 6 - 39°16' - 416.5
- 7 - 350°11' - 229.5
- 8 - 7°46' - 318.0
- 9 - 324°8' - 134.2
- 10 - 17°38' - 535.0
- 11 - 308°12' - 147.0

(over)

