

BANKING

DECEMBER 1978

Catalogue No. 5605.0

AUSTRALIAN BUREAU OF STATISTICS Canberra

INQUIRIES

*If you want to know more about these statistics ring Mr Colin Squair on Canberra 527126 or our State office, or write to Information Services, ABS, P.O. Box 10, Belconnen, A.C.T. 2616
For copies of this publication contact Information Services, Canberra 526627 or State offices.*

CATALOGUE NO. 5606.0

NOON 6 MARCH 1979

BANKING, AUSTRALIA
DECEMBER 1978

CONTENTS

<i>Table</i>		<i>Page</i>
	Explanatory Notes	3
	Section 1	
	TRADING BANKS –	
	All trading banks and major trading banks component –	
1	Liabilities within Australia	5
2	Assets within Australia	6
3	Selected assets and liabilities within Australia and ratios to total deposits	7
	All trading banks –	
4	Deposits and advances in each State and Territory	8
5	Debits to customers' accounts	9
6	Certificates of deposit issued	10
7	Certificates of deposit outstanding	10
	Major trading banks –	
8	Selected assets and liabilities within Australia – original and seasonally adjusted	11
9	New and increased lending commitments and overdraft limits	11
	Section 2	
	SAVINGS BANKS –	
10	Assets and liabilities within Australia	12
11	Accounts, deposits, withdrawals, interest added to accounts and depositors' balances, original and seasonally adjusted and depositors' balances per head of population	13
	Section 3	
	RESERVE BANK OF AUSTRALIA –	
12	Central Banking Business (including Note Issue Department), liabilities and assets within Australia and Overseas; and Rural Credits Department, loans, advances and bills discounted	14
13	Australian note issue, value of Australian notes outstanding	15

CONTENTS - *continued*

Table

Page

Section 4

	MISCELLANEOUS -	
14	Commonwealth Development Bank of Australia, loans, advances and bills discounted	15
15	Australian Resources Development Bank, selected liabilities and assets within Australia	16
16	Interest rates	17
17	Security yields and short-term money market interest rates	18
18	Volume of money	18
19	Overseas exchange rates, telegraphic transfer rates for Australia on overseas countries	19

Section 5

FOR MAJOR TRADING BANKS : CLASSIFICATION OF BANK ADVANCES,
NEW AND INCREASED LENDING COMMITMENTS, OVERDRAFT LIMITS AND DEPOSITS -

See the September 1978 issue of this bulletin.

Section 6

For BRANCHES AND AGENCIES at 30 June 1978 see the June 1978 issue of this bulletin

Section 7

REVISED SEASONALLY ADJUSTED BANKING SERIES -
Major trading banks -

20	Total Deposits	22
21	Liquid assets and Australian Government Securities	23
22	Loans, advances and bills discounted - total	24
23	Loans, advances and bills discounted - other	25
24	New and Increased Lending Commitments	26
25	Overdraft Limits	27
	Savings banks -	
26	Depositors' balances	28

Appendix A

	Details of seasonal adjustment methods used and measures of variability	29
--	---	----

EXPLANATORY NOTES

This bulletin covers banking and related statistics compiled from returns submitted under the *Banking Act 1959* and from other information provided voluntarily by the banks including State banks.

2. The seasonally adjusted figures for major trading banks deposits, liquid assets and Australian Government securities, loans, advances and bills discounted (see Table 8) and depositors' balances with savings banks (see Table 11) in this bulletin, have been revised following the annual re-analysis. Details of methods used in seasonally adjusting these series are provided in *Seasonally Adjusted Indicators* (1308.0) and in Appendix A of this bulletin.

Trading banks

3. Trading banks comprise the major trading banks and several additional trading banks.

The major trading banks are :

Commonwealth Trading Bank of
Australia
Australia and New Zealand Banking
Group Limited
The Bank of Adelaide
Bank of New South Wales
The Commercial Bank of Australia
Limited
The Commercial Banking Company of
Sydney Limited
The National Bank of Australasia
Limited

The additional banks are :

Bank of New Zealand
Bank of Queensland Limited
Banque Nationale de Paris
The Rural Bank of New South Wales
State Bank of South Australia
The Rural and Industries Bank of Western
Australia (Rural Department)

4. Unless otherwise stated, the statistics presented are *averages of weekly returns*. The figures shown for liabilities and assets are the averages of liabilities and assets within Australia of the banks at the close of business on the weekly balance days during the period concerned. The weekly balance day is usually Wednesday. The figures shown for debits to customers' accounts are the average of debits for the weeks ending at the close of business on the weekly balance days during the period concerned. The figures shown for new and increased lending commitments are the averages of weekly commitments for the month ending on the second Wednesday of the month under review. Banks are exempted from furnishing a return in regard to selected liabilities and assets for the fourth Wednesday in December of each year.

5. A classification of advances and deposits, overdraft limits and new and increased lending commitments of the major trading banks is made half-yearly at the second Wednesday in January and July.

Savings banks

6. The savings banks are :

Commonwealth Savings Bank of
Australia*
Australia and New Zealand Savings
Bank Limited*
The Bank of Adelaide Savings Bank
Limited*
Bank of New South Wales Savings Bank
Limited*
The Commercial Savings Bank of Australia
Limited*
C.B.C. Savings Bank Limited*
The National Bank Savings Bank Limited*
The Bank of New Zealand Savings Bank
Limited*
The Hobart Savings Bank (trading as The
Savings Bank of Tasmania)
Launceston Bank for Savings
The State Savings Bank of Victoria
The Savings Bank of South Australia
The Rural and Industries Bank of Western
Australia (Savings Bank Division)

* These banks conduct banking business in more than one State.

7. Particulars for the Commonwealth Savings Bank, the three State banks and the Hobart Savings Bank relate to the end of the month, those for the Launceston Bank for Savings to the last Monday of the month and those for the private savings banks to the last Wednesday of the month.

8. The number of operative accounts *excludes* school bank accounts and small inoperative accounts. The other sections of the tables relating to depositors' balances etc., relate to all accounts *including* school accounts and small inoperative accounts.

9. Depositors' balances in Australia *exclude* balances in External Territories.

10. Deposits and withdrawals during each month *include* inter-branch transfers for those savings banks which operate in more than one State.

11. Details of liabilities and assets for individual trading banks, savings banks, the Commonwealth Development Bank, the Rural Credits Department of the Reserve Bank of Australia and the Australian Resources Development Bank Limited, are published each month in the "Commonwealth of Australia Gazette".

Revisions

12. This bulletin incorporates revisions made to previous statistics in this series.

Related publications

Users may also wish to refer to the following publications which are available on request :

Major Trading Banks, Australia (5603.0) (monthly)

Savings Banks, Australia (5602.0) (monthly)

All publications produced by the ABS are

listed in the *Catalogue of Publications* (1101.0) which is available free of charge from any ABS office.

Symbols and other usages

- nil, or less than half the final digit shown.
- break in continuity of series (where drawn across a column between two consecutive figures).

Where figures have been rounded, discrepancies may occur between sums of the component items and totals.

R. J. CAMERON
Australian Statistician

SECTION I : TRADING BANKS

TABLE 1. ALL TRADING BANKS AND MAJOR TRADING BANKS : LIABILITIES WITHIN AUSTRALIA (a)
(\$ million)

Average of weekly figures for month of -	Deposits														Balances due to other banks (c)	Bills payable and all other liabilities	Total liabilities
	Fixed (b)			Current						Not bearing interest							
	Australian and State Governments	Other banks	Other	Bearing interest			Total bearing interest	Not bearing interest			Total current	Total deposits					
				Australian and State Governments	Other banks	Other		Australian and State Governments	Other banks	Other							
ALL TRADING BANKS																	
1977 -																	
November	1,492.6	145.8	10,199.5	11,838.0	103.1	31.0	790.4	924.5	85.6	128.8	6,777.1	6,991.5	7,916.0	19,754.0	585.0	2,432.2	22,771.2
December (d)	1,450.5	123.4	10,187.9	11,761.8	86.6	21.1	789.4	897.1	88.5	102.8	7,036.6	7,227.9	8,125.0	19,886.8	589.2	2,561.3	23,037.3
1978 -																	
January	1,567.8	136.1	10,239.2	11,943.0	113.8	35.9	783.8	933.4	89.3	136.4	7,081.2	7,306.9	8,240.3	20,183.4	580.0	2,640.3	23,403.6
February	1,632.4	137.7	10,434.6	12,204.7	125.4	31.3	813.8	970.5	87.5	138.6	7,108.6	7,334.6	8,305.1	20,509.8	588.5	2,615.2	23,713.6
March	1,694.2	139.8	10,791.6	12,625.6	122.0	20.5	837.3	979.9	85.1	114.4	7,176.2	7,375.7	8,355.6	20,981.2	585.1	2,673.1	24,239.4
April	1,611.8	158.7	10,644.8	12,415.4	150.4	22.7	850.8	1,023.8	99.4	125.9	7,121.0	7,346.2	8,370.0	20,785.4	599.9	2,757.6	24,142.9
May	1,563.4	128.3	10,284.9	11,976.7	127.4	26.1	823.8	977.3	87.9	136.1	6,857.0	7,081.0	8,058.3	20,035.0	654.8	2,886.3	23,576.0
June	1,361.5	110.7	10,123.8	11,596.0	175.5	31.1	838.5	1,045.0	81.7	148.3	6,875.2	7,105.3	8,150.3	19,746.2	682.8	2,907.5	23,366.6
July	1,342.1	109.1	10,216.1	11,667.3	158.7	31.5	865.1	1,055.2	77.8	145.7	6,878.4	7,101.9	8,157.1	19,824.4	604.3	2,913.3	23,342.0
August	1,426.4	121.8	10,767.0	12,315.2	111.0	33.0	860.2	1,004.2	81.0	156.6	6,909.7	7,147.3	8,151.5	20,466.6	563.6	2,899.8	23,930.0
September	1,460.4	122.9	11,069.2	12,652.5	96.2	32.9	854.2	983.3	70.5	158.4	6,990.7	7,219.6	8,202.9	20,855.5	593.8	2,965.7	24,415.0
October	1,507.8	123.5	11,287.8	12,919.1	83.1	33.5	870.5	987.2	76.5	151.5	7,156.8	7,384.8	8,371.9	21,291.0	565.5	3,057.2	24,913.7
November	1,507.4	130.8	11,380.3	13,018.5	93.5	26.2	877.0	996.8	76.9	132.4	7,404.6	7,613.9	8,610.6	21,629.2	560.6	3,176.7	25,366.5
December (d)	1,429.9	114.9	11,350.5	12,895.3	108.9	27.4	905.2	1,041.5	85.6	133.8	7,834.9	8,054.2	9,095.7	21,991.1	551.8	3,288.4	25,831.2
MAJOR TRADING BANKS																	
1977 -																	
November	1,207.7	130.5	9,013.0	10,351.2	64.6	30.8	678.9	774.4	66.5	127.8	6,408.3	6,602.6	7,377.0	17,728.2	544.1	1,962.8	20,235.1
December (d)	1,161.0	115.2	9,011.9	10,288.2	59.3	20.8	666.2	746.3	70.5	101.9	6,653.3	6,825.8	7,572.1	17,860.3	552.0	2,076.6	20,488.8
1978 -																	
January	1,257.4	128.8	9,030.7	10,417.0	68.0	35.6	652.3	756.0	72.6	135.2	6,675.1	6,882.9	7,638.9	18,055.8	538.5	2,144.3	20,738.6
February	1,315.2	133.7	9,199.1	10,648.0	70.1	31.1	678.9	780.2	70.9	137.9	6,705.0	6,913.8	7,693.9	18,341.9	543.1	2,117.8	21,002.8
March	1,375.5	138.3	9,491.3	11,005.1	70.8	20.3	701.8	792.9	66.4	113.3	6,767.5	6,947.2	7,740.1	18,745.2	543.5	2,151.7	21,440.4
April	1,313.5	157.4	9,397.2	10,868.0	99.7	22.5	709.3	831.5	81.4	124.5	6,714.3	6,920.2	7,751.7	18,619.7	554.9	2,231.5	21,406.1
May	1,275.2	127.1	9,015.1	10,417.3	81.8	26.0	697.8	805.5	71.4	135.0	6,461.0	6,667.4	7,472.9	17,890.2	610.5	2,326.8	20,827.5
June	1,095.2	109.4	8,829.1	10,033.8	123.0	30.8	712.5	866.3	61.8	147.7	6,483.7	6,693.3	7,559.6	17,593.4	628.7	2,338.1	20,560.2
July	1,073.6	107.9	8,889.5	10,071.0	99.3	31.3	732.2	862.8	59.5	144.8	6,499.5	6,703.7	7,566.5	17,637.4	559.4	2,312.0	20,510.0
August	1,154.7	120.5	9,407.5	10,682.7	62.9	32.7	726.2	821.9	60.6	155.5	6,533.9	6,750.0	7,571.8	18,254.6	524.3	2,298.8	21,077.7
September	1,170.2	121.7	9,671.6	10,963.5	59.6	32.7	723.6	815.9	51.8	157.5	6,610.9	6,820.1	7,636.0	18,599.5	556.3	2,354.2	21,510.0
October	1,218.3	121.8	9,815.3	11,155.4	54.2	33.3	736.1	823.5	55.2	150.6	6,766.8	6,972.6	7,796.1	18,951.5	526.9	2,446.8	21,925.2
November	1,208.7	128.6	9,880.3	11,217.6	59.8	26.0	738.7	824.6	57.3	131.4	7,001.2	7,189.9	8,014.5	19,232.1	519.2	2,567.7	22,319.0
December (d)	1,149.9	112.7	9,875.4	11,137.9	71.2	27.2	755.2	853.6	66.0	132.6	7,411.2	7,609.7	8,463.3	19,601.2	505.1	2,675.0	22,781.4

(a) Excludes shareholders' funds, inter-branch accounts and contingencies. (b) Includes certificates of deposit outstanding. See Table 7, page 10. (c) Includes short-term loans from the Reserve Bank and amounts owing in respect of loans refinanced by Australian Resources Development Bank. (d) Excludes one Wednesday.

TABLE 2. ALL TRADING BANKS AND MAJOR TRADING BANKS: ASSETS WITHIN AUSTRALIA (a)
(\$ million)

Average of weekly figures for month of -	Australian public securities										Loans, advances and bills discounted						
	Coin, bullion and notes	Cash with Reserve Bank	Australian and State Governments		Local and semi-government authorities	Other securities	Loans to authorised dealers in the short-term money market	Statutory reserve deposit accounts with Reserve Bank	Cheques and bills of other banks and balances with and due from other banks (b)	Temporary advances to wool-buyers (c)	Term loans (d)	Farm development loans (d)	Other loans	Total loans, advances and bills discounted	Bank premises, furniture and sites	Bills receivable and all other assets	Total assets
			Treasury bills and Treasury notes	Other													
ALL TRADING BANKS																	
1977 -																	
November	380.3	5.5	125.3	3,636.6	41.8	682.7	250.6	1,144.5	485.4	179.4	1,294.1	404.0	13,080.9	14,958.4	404.8	1,870.7	23,986.6
December (e)	475.0	4.0	117.4	3,707.7	43.2	711.6	182.4	1,163.5	427.4	193.0	1,315.2	412.1	13,050.5	14,970.8	410.2	2,002.0	24,215.2
1978 -																	
January	407.0	14.5	262.3	4,032.8	40.8	721.8	236.7	1,176.0	449.3	167.7	1,335.3	416.9	13,019.4	14,939.3	419.0	2,047.2	24,736.7
February	404.8	5.5	452.7	4,008.8	39.1	725.3	219.6	1,187.2	473.5	147.6	1,343.8	419.1	13,087.1	14,997.6	422.6	2,021.2	24,957.9
March	409.1	5.5	543.9	4,017.6	38.1	724.1	212.1	1,204.8	467.1	150.1	1,357.8	425.6	13,399.3	15,332.8	426.4	2,074.7	25,456.2
April	484.0	22.5	570.9	3,828.4	42.3	731.4	237.9	1,040.5	430.7	127.3	1,351.9	432.6	13,685.3	15,597.1	430.9	2,268.1	25,684.9
May	402.1	4.9	210.0	3,653.1	39.5	734.5	260.4	757.0	384.7	145.9	1,380.5	441.7	13,926.7	15,894.8	434.7	2,363.8	25,139.4
June	404.1	5.3	97.9	3,609.1	48.6	754.6	215.2	718.4	373.5	119.6	1,416.2	461.7	13,877.1	15,874.6	431.9	2,376.9	24,915.3
July	401.0	4.9	92.5	3,623.2	45.1	728.4	190.9	734.0	414.4	131.4	1,410.9	451.7	13,783.2	15,777.2	440.7	2,385.4	24,832.3
August	401.8	7.6	215.9	3,694.6	50.1	773.2	259.5	717.1	355.7	97.8	1,424.7	469.3	14,192.6	16,184.4	436.7	2,331.6	25,428.2
September	390.7	5.5	245.7	3,921.1	50.1	765.8	358.9	667.0	352.0	116.4	1,436.4	478.6	14,325.5	16,356.9	442.5	2,368.5	25,924.9
October	408.3	5.0	213.0	4,169.9	60.4	763.1	280.1	658.7	370.8	146.0	1,424.4	485.4	14,770.2	16,826.1	451.7	2,424.3	26,531.4
November	408.0	8.9	430.1	4,159.3	70.6	744.6	192.6	672.9	469.5	155.1	1,439.5	495.0	14,734.1	16,823.7	457.0	2,483.8	26,920.9
December (e)	501.7	5.2	479.7	4,134.9	74.7	759.9	188.5	682.2	447.3	158.1	1,456.1	507.1	14,866.8	16,988.2	462.5	2,538.3	27,263.3
MAJOR TRADING BANKS																	
1977 -																	
November	357.7	4.9	88.3	3,352.6	10.3	601.0	211.3	1,127.5	385.9	179.4	1,294.1	404.0	11,086.3	12,963.8	317.5	1,735.4	21,156.3
December (e)	450.6	3.4	83.0	3,423.0	8.9	624.3	151.3	1,145.9	327.4	193.0	1,315.2	412.1	11,049.9	12,970.1	321.7	1,853.6	21,363.2
1978 -																	
January	380.6	13.8	218.4	3,741.2	8.8	628.0	176.3	1,158.8	359.4	167.7	1,335.3	416.9	10,936.6	12,856.5	329.4	1,891.0	21,762.2
February	380.2	4.8	399.5	3,725.9	8.8	628.7	178.0	1,170.4	374.9	147.6	1,343.8	419.1	10,958.3	12,868.7	331.6	1,869.4	21,941.1
March	385.1	4.9	478.8	3,741.9	8.7	630.3	168.5	1,188.5	362.6	150.1	1,357.8	425.6	11,223.3	13,156.7	334.2	1,901.1	22,361.3
April	456.5	21.9	498.6	3,553.8	13.6	646.6	188.7	1,025.4	337.4	127.3	1,351.9	432.6	11,551.2	13,463.1	339.0	2,095.5	22,624.1
May	377.2	4.3	150.3	3,377.6	9.5	634.8	219.5	745.8	298.6	145.9	1,380.5	441.7	11,788.9	13,756.9	342.0	2,162.2	22,098.6
June	378.9	4.6	53.6	3,326.2	16.8	652.1	137.5	722.6	322.6	131.4	1,410.9	451.7	11,632.2	13,626.2	347.1	2,175.9	21,764.1
July	376.6	4.1	49.5	3,334.8	19.8	675.8	151.6	706.6	276.3	119.6	1,416.2	461.7	11,687.6	13,685.1	337.8	2,140.9	21,759.0
August	377.4	6.9	170.1	3,401.6	21.0	693.0	216.1	705.1	258.1	97.8	1,424.7	469.3	11,969.8	13,961.6	341.9	2,089.0	22,244.9
September	365.8	4.6	202.6	3,616.0	20.2	681.8	302.5	655.5	255.1	116.4	1,436.4	478.6	12,085.1	14,116.4	347.2	2,111.7	22,679.4
October	382.4	4.3	166.6	3,848.8	25.1	679.2	236.5	647.2	271.6	146.0	1,424.4	485.4	12,460.4	14,516.2	356.1	2,173.8	23,307.9
November	382.7	8.2	365.6	3,832.4	30.6	654.3	142.0	660.6	378.8	155.1	1,439.5	495.0	12,398.2	14,487.8	360.4	2,234.7	23,538.2
December (e)	474.8	4.4	417.5	3,810.0	34.4	660.7	139.8	669.8	352.2	158.1	1,456.1	507.1	12,561.4	14,682.7	365.2	2,286.2	23,900.3

(a) Excludes inter-branch accounts. (b) Includes term loan fund and farm development loan fund accounts of the major trading banks with the Reserve Bank. (c) Temporary finance for the purchase of wool in Australia pending transfer to overseas or local principals. (d) Loans made from accounts with the Reserve Bank. (e) Excludes one Wednesday.

TABLE 3. ALL TRADING BANKS AND MAJOR TRADING BANKS
SELECTED ASSETS AND LIABILITIES WITHIN AUSTRALIA AND RATIOS TO TOTAL DEPOSITS

Average of weekly figures for month of -	Liquid assets and Government securities				Statutory reserve deposit accounts with Reserve Bank	Loans, advances and bills dis-counted (a)	Deposits not bearing interest	Liquid assets and Government securities				Statutory reserve deposit accounts with Reserve Bank	Loans, advances and bills dis-counted (a)	Deposits not bearing interest
	Cash and cash with Reserve Bank	Treasury bills and Treasury notes	Other Australian and State Government securities	Total				Cash and cash with Reserve Bank	Treasury bills and Treasury notes	Other Australian and State Government securities	Total			
	AMOUNT (\$ million)							RATIO TO TOTAL DEPOSITS (per cent)						
ALL TRADING BANKS														
1977 -														
November	385.8	125.3	3,636.6	4,147.7	1,144.5	14,958.4	6,991.5	2.0	0.6	18.4	21.0	5.8	75.7	35.4
December (b)	479.0	117.4	3,707.7	4,304.1	1,163.5	14,970.8	7,227.9	2.4	0.6	18.6	21.6	5.9	75.3	36.4
1978 -														
January	421.5	262.3	4,032.8	4,716.6	1,176.0	14,939.3	7,306.9	2.1	1.3	20.0	23.4	5.8	74.0	36.2
February	410.3	452.7	4,008.8	4,871.9	1,187.2	14,997.6	7,334.6	2.0	2.2	19.6	23.8	5.8	73.1	35.8
March	414.7	543.9	4,017.6	4,976.1	1,204.8	15,332.8	7,375.7	2.0	2.6	19.2	23.7	5.7	73.1	35.2
April	506.6	570.9	3,828.4	4,905.8	1,040.5	15,597.1	7,346.2	2.4	2.7	18.4	23.6	5.0	75.0	35.3
May	407.1	210.0	3,653.1	4,270.1	757.0	15,894.8	7,081.0	2.0	1.1	18.2	21.3	3.8	79.3	35.3
June	409.4	97.9	3,609.1	4,116.4	734.0	15,777.2	7,105.3	2.1	0.5	18.3	20.8	3.7	79.9	36.0
July	405.9	92.5	3,623.2	4,121.6	718.4	15,874.6	7,101.9	2.1	0.5	18.3	20.8	3.6	80.1	35.8
August	409.4	215.9	3,694.6	4,319.9	717.1	16,184.4	7,147.3	2.0	1.1	18.1	21.1	3.5	79.1	34.9
September	396.2	245.7	3,921.1	4,563.0	667.0	16,356.9	7,219.6	1.9	1.2	18.8	21.9	3.2	78.4	34.6
October	413.3	213.0	4,169.9	4,796.2	658.7	16,826.1	7,384.8	1.9	1.0	19.6	22.5	3.1	79.0	34.7
November	416.9	430.1	4,159.3	5,006.3	672.9	16,823.7	7,613.9	1.9	2.0	19.2	23.2	3.1	77.8	35.2
December (b)	506.9	479.7	4,134.9	5,121.5	682.2	16,988.2	8,054.2	2.3	2.2	18.8	23.3	3.1	77.3	36.6
MAJOR TRADING BANKS														
1977 -														
November	362.6	88.3	3,352.6	3,803.5	1,127.5	12,963.8	6,602.6	2.1	0.5	18.9	21.5	6.4	73.1	37.2
December (b)	454.0	83.0	3,423.0	3,960.0	1,145.9	12,970.1	6,825.8	2.5	0.5	19.2	22.2	6.4	72.6	38.2
1978 -														
January	394.4	218.4	3,741.2	4,354.0	1,158.8	12,855.5	6,882.9	2.2	1.2	20.7	24.1	6.4	71.2	38.1
February	385.0	399.5	3,725.9	4,510.5	1,170.4	12,868.7	6,913.8	2.1	2.2	20.3	24.6	6.4	70.2	37.7
March	390.0	478.8	3,741.9	4,610.7	1,188.5	13,156.7	6,947.2	2.1	2.6	20.0	24.6	6.3	70.2	37.1
April	478.4	498.6	3,553.8	4,530.9	1,025.4	13,463.1	6,920.2	2.6	2.7	19.1	24.3	5.5	72.3	37.2
May	381.5	150.3	3,377.6	3,909.4	745.8	13,756.9	6,667.4	2.1	0.8	18.9	21.9	4.2	76.9	37.3
June	383.5	53.6	3,326.2	3,763.4	722.6	13,626.2	6,693.3	2.2	0.3	18.9	21.4	4.1	77.5	38.0
July	380.8	49.5	3,334.8	3,765.0	706.6	13,685.1	6,703.7	2.2	0.3	18.9	21.3	4.0	77.6	38.0
August	384.3	170.1	3,404.6	3,959.1	705.1	13,961.6	6,750.0	2.1	0.9	18.7	21.7	3.9	76.5	37.0
September	370.4	202.6	3,616.0	4,189.0	655.5	14,116.4	6,820.1	2.0	1.1	19.4	22.5	3.5	75.9	36.7
October	386.7	166.6	3,848.8	4,402.1	647.2	14,516.2	6,972.6	2.0	0.9	20.3	23.2	3.4	76.6	36.8
November	390.9	365.6	3,832.4	4,589.0	660.6	14,487.8	7,189.9	2.0	1.9	19.9	23.9	3.4	75.3	37.4
December (b)	479.3	417.5	3,810.0	4,706.8	669.8	14,682.7	7,609.7	2.5	2.1	19.4	24.0	3.4	74.9	38.8

(a) Excludes loans to authorised dealers in the short-term money market. (b) Excludes one Wednesday.

TABLE 4. ALL TRADING BANKS: DEPOSITS AND ADVANCES IN EACH STATE AND TERRITORY
(\$ million)

<i>Average of weekly figures for month of -</i>	N.S.W.	Vic.	Qld	S.A.	W.A.	Tas.	N.T.	A.C.T.	Total
DEPOSITS									
1977 -									
November	8,489.9	4,966.6	2,885.8	1,344.6	1,400.6	377.3	81.2	198.8	19,744.9
December (a)	8,529.6	4,958.0	2,940.6	1,343.1	1,435.1	376.2	82.2	213.1	19,877.9
1978 -									
January	8,679.2	4,951.0	2,973.5	1,358.6	1,546.3	379.5	80.9	205.5	20,174.3
February	8,819.3	4,984.5	3,012.9	1,404.8	1,585.2	394.6	80.6	218.3	20,500.2
March	8,993.7	5,111.7	3,067.6	1,435.8	1,616.6	414.9	80.5	251.0	20,971.7
April	8,939.8	5,099.8	3,043.7	1,400.0	1,542.4	411.4	81.8	256.6	20,775.6
May	8,714.4	4,818.6	2,975.5	1,342.1	1,468.3	392.8	82.0	231.1	20,024.8
June	8,690.3	4,664.2	2,969.1	1,301.5	1,420.2	371.7	85.6	232.5	19,735.3
July	8,780.6	4,579.4	3,004.2	1,292.6	1,436.4	360.6	119.5	240.7	19,813.9
August	8,988.7	4,744.8	3,104.5	1,326.2	1,516.6	378.9	137.7	258.8	20,456.2
September	9,143.9	4,806.9	3,195.5	1,336.4	1,578.1	386.1	133.1	265.4	20,845.3
October	9,430.9	4,820.4	3,264.7	1,382.7	1,608.7	395.1	118.8	259.2	21,280.5
November	9,577.1	4,869.4	3,329.8	1,424.1	1,635.1	425.8	105.6	251.9	21,618.8
December (a)	9,694.4	5,008.4	3,409.5	1,436.6	1,639.4	420.8	109.1	262.1	21,980.2
LOANS, ADVANCES AND BILLS DISCOUNTED									
1977 -									
November	6,503.0	3,719.1	1,783.0	1,220.7	1,139.6	244.7	52.0	293.5	14,955.8
December (a)	6,483.4	3,698.9	1,793.9	1,235.8	1,147.6	249.4	52.5	306.6	14,968.1
1978 -									
January	6,438.3	3,713.6	1,782.9	1,232.4	1,167.8	248.2	53.8	299.7	14,936.7
February	6,455.1	3,705.1	1,797.9	1,240.8	1,190.0	250.3	54.4	301.4	14,994.9
March	6,662.4	3,763.4	1,828.9	1,268.2	1,198.3	248.9	54.9	305.0	15,330.1
April	6,697.3	3,824.0	1,903.9	1,322.8	1,226.3	251.6	57.4	305.0	15,594.3
May	6,874.4	3,836.0	1,938.4	1,349.4	1,252.0	272.0	57.8	312.0	15,892.0
June	6,786.6	3,745.3	1,940.4	1,370.7	1,275.3	276.5	58.6	321.2	15,774.4
July	6,794.9	3,795.3	1,941.5	1,392.1	1,274.0	282.5	59.4	331.9	15,871.6
August	6,946.1	3,891.5	1,946.1	1,414.5	1,294.1	285.2	59.7	344.3	16,181.4
September	7,054.8	3,899.5	1,953.9	1,438.7	1,308.6	289.8	59.3	349.2	16,353.8
October	7,206.8	4,020.7	1,966.0	1,475.8	1,349.2	297.2	60.6	346.4	16,822.7
November	7,358.1	3,935.2	1,972.6	1,486.8	1,356.0	300.5	61.2	350.0	16,820.5
December (a)	7,413.1	4,004.7	1,999.9	1,502.5	1,353.0	301.1	61.3	349.4	16,984.9

(a) Excludes one Wednesday.

TABLE 5. ALL TRADING BANKS: DEBITS TO CUSTOMERS' ACCOUNTS (a)
(£ million)

Average of weekly figures for month of -	N.S.W.	Vic.	Qld	S.A.	W.A.	Tas.	N.T.	A.C.T.	Total
AUSTRALIAN AND STATE GOVERNMENTS (b)									
1977 -									
November	441.3	139.1	0.3	0.6	0.6	0.2	-	-	582.0
December	482.5	148.3	0.3	0.3	0.4	0.1	-	-	632.0
1978 -									
January	445.9	181.8	0.3	0.6	0.5	0.2	-	-	629.3
February	447.1	151.7	5.5	0.9	0.5	0.2	-	-	605.8
March	440.4	139.4	0.3	1.5	0.6	0.1	-	-	582.4
April	477.0	176.4	0.3	1.9	0.5	0.2	-	-	656.4
May	504.2	157.6	0.3	2.0	0.6	0.2	-	-	665.0
June	685.2	139.6	0.3	1.8	0.8	0.1	-	-	827.7
July	542.3	232.5	0.3	1.9	0.8	0.2	-	-	778.0
August	490.3	169.2	0.3	1.9	0.6	0.3	-	-	662.5
September	554.5	150.9	0.3	1.8	0.5	0.4	-	-	708.4
October	497.1	150.1	0.3	1.8	0.5	0.3	-	-	650.1
November	492.5	127.7	0.3	1.5	0.6	0.4	-	-	622.4
December	593.7	155.1	0.3	0.3	0.8	0.2	-	-	750.4
OTHER									
1977 -									
November	6,238.5	5,267.4	1,379.9	773.0	993.7	199.3	32.2	134.0	15,017.9
December	6,650.8	5,454.6	1,477.7	811.9	1,014.9	206.7	31.4	224.7	15,872.7
1978 -									
January	6,761.7	5,105.6	1,271.7	726.1	956.9	169.5	28.7	155.0	15,175.3
February	6,458.9	5,485.1	1,640.7	790.6	1,062.1	180.8	28.3	146.1	15,792.5
March	5,626.4	4,774.6	1,258.0	747.6	963.2	179.3	29.6	146.6	13,725.3
April	6,854.9	6,052.2	1,385.5	808.8	1,027.9	216.1	33.6	200.1	16,579.3
May	6,503.3	5,785.7	1,380.2	863.8	1,023.9	208.3	31.4	160.6	15,957.3
June	7,316.5	5,552.6	1,528.1	846.8	1,079.7	190.9	35.7	246.0	16,796.3
July	7,767.8	6,269.3	1,587.6	871.9	1,357.7	218.6	37.2	276.7	18,386.9
August	6,806.9	6,048.0	1,307.5	781.8	1,072.2	194.0	34.7	340.2	16,585.2
September	7,324.5	5,802.6	1,508.7	830.3	1,056.5	210.2	39.2	159.3	16,931.5
October	6,814.6	5,425.5	1,416.8	785.0	1,070.0	208.6	34.8	150.5	15,905.8
November	7,099.8	5,742.1	1,489.0	825.4	1,114.0	217.8	186.4	159.7	16,834.0
December	7,692.0	6,466.1	1,532.8	994.2	1,140.7	245.0	36.9	185.6	18,293.4
TOTAL									
1977 -									
November	6,679.8	5,406.5	1,380.2	773.5	994.3	199.4	32.2	134.0	15,599.9
December	7,133.3	5,602.9	1,478.0	812.2	1,015.3	206.9	31.5	224.7	16,504.8
1978 -									
January	7,207.6	5,287.4	1,272.0	726.8	957.5	169.7	28.7	155.0	15,804.6
February	6,905.9	5,636.8	1,646.2	791.5	1,062.6	180.9	28.3	146.1	16,398.3
March	6,066.8	4,914.1	1,258.3	749.1	963.7	179.4	29.7	146.6	14,307.7
April	7,332.0	6,228.6	1,385.8	810.8	1,028.5	216.3	33.7	200.1	17,235.6
May	7,007.6	5,943.3	1,380.4	865.9	1,024.5	208.5	31.5	160.6	16,622.2
June	8,001.7	5,692.2	1,528.4	848.6	1,080.5	191.0	35.7	246.0	17,624.0
July	8,310.1	6,501.8	1,587.9	873.8	1,358.6	218.8	37.2	276.7	19,165.0
August	7,297.3	6,217.1	1,307.8	783.7	1,072.8	194.2	34.7	340.2	17,247.8
September	7,879.0	5,953.5	1,509.1	832.1	1,057.0	210.6	39.2	159.3	17,639.9
October	7,311.7	5,575.6	1,417.1	786.8	1,070.6	208.8	34.9	150.5	16,555.9
November	7,592.4	5,869.2	1,489.3	826.8	1,114.5	218.2	186.4	159.7	17,456.4
December	8,285.7	6,621.3	1,533.1	994.5	1,141.5	245.2	37.0	185.6	19,043.8
TOTAL									
Week ended -	Australian and State Governments (b)	Other	Total	Week ended -	Australian and State Governments (b)	Other	Total		
4 October	493.0	15,701.0	16,194.0	22 November	775.7	16,829.7	17,605.4		
11 October	651.3	15,944.6	16,596.0	29 November	567.1	16,832.8	17,399.9		
18 October	679.2	16,711.9	17,391.2	6 December	865.2	20,547.8	21,412.9		
25 October	776.7	15,265.7	16,042.4	13 December	612.8	17,241.9	17,854.7		
1 November	590.8	18,785.6	19,376.4	20 December	895.3	21,192.2	22,087.6		
8 November	589.9	15,738.9	16,328.8	27 December	628.4	14,191.6	14,820.1		
15 November	588.7	15,983.0	16,571.7						

(a) Covers all trading banks and, in addition, the Rural Credits Department of the Reserve Bank and the Commonwealth Development Bank.
(b) At city branches in State capitals.

TABLE 6. ALL TRADING BANKS : CERTIFICATES OF DEPOSIT ISSUED (a)

Source : Reserve Bank of Australia

	Average weekly issues during period (\$ million) (b)				Weighted average issue yield (per cent per annum)			
	3 months to less than 6 months	6 months to less than 12 months	12 months to less than 24 months	24 months to 48 months	3 months to less than 6 months	6 months to less than 12 months	12 months to less than 24 months	24 months to 48 months
1977 -								
November	19.8	6.4	0.1	-	10.12	9.86	9.60	-
December	11.3	3.9	1.4	-	9.70	9.64	9.73	-
1978 -								
January	12.0	3.6	4.0	-	9.53	9.66	9.79	-
February	16.8	8.1	1.3	-	9.82	9.94	9.72	-
March	29.0	6.5	1.1	-	10.02	10.05	9.91	-
April	20.1	3.0	0.6	-	10.37	10.20	10.00	-
May	34.1	10.2	-	0.6	10.37	10.32	9.50	10.40
June	18.5	6.4	0.8	1.3	10.20	10.17	9.95	9.75
July	23.9	13.0	1.5	0.8	9.94	9.66	9.73	9.85
August	24.6	9.3	0.3	0.2	9.65	9.59	9.77	9.00
September	22.0	7.3	1.6	1.5	9.66	9.60	9.72	9.67
October	14.4	6.5	1.1	0.5	9.58	9.48	9.77	9.47
November	14.3	8.2	1.0	0.2	9.13	9.16	9.18	9.60
December	11.5	5.3	0.1	-	8.78	8.87	8.75	-

(a) Issued for amounts of \$50,000 and over. (b) Most banks are reporting on basis of actual amount of cash deposited.

TABLE 7. ALL TRADING BANKS : CERTIFICATES OF DEPOSIT OUTSTANDING (a)
(\$ million)

Average of weekly figures for month of -	N.S.W. (b)	Vic.	Qld	S.A. (c)	W.A.	Tas.	Total
1977 -							
November	519.2	558.4	35.5	72.7	127.0	0.4	1,313.2
December (d)	438.5	481.6	27.5	67.7	113.3	0.3	1,129.0
1978 -							
January	369.5	354.2	22.7	48.9	115.7	0.3	911.2
February	342.4	295.3	21.2	38.1	118.4	0.3	815.6
March	325.9	266.6	30.2	27.9	113.9	1.3	765.9
April	299.2	233.2	29.0	24.2	106.7	2.2	694.5
May	357.9	215.7	36.7	36.8	108.7	3.1	759.0
June	412.5	189.3	53.1	45.9	108.2	3.4	812.3
July	438.1	139.5	59.7	47.7	116.9	6.3	808.3
August	429.6	129.0	57.2	46.5	125.2	7.9	795.4
September	449.8	119.3	48.7	44.8	138.7	7.7	808.9
October	439.8	120.0	47.8	44.9	143.4	6.0	801.8
November	404.1	120.5	35.4	41.1	144.6	5.2	750.8
December (d)	365.4	134.4	36.5	41.0	138.0	4.7	719.9

(a) Most banks are reporting on basis of actual amount of cash deposited. (b) Includes Australian Capital Territory. (c) Includes Northern Territory. (d) Excludes one Wednesday.

**TABLE 8. MAJOR TRADING BANKS : SELECTED ASSETS AND LIABILITIES WITHIN AUSTRALIA
ORIGINAL AND SEASONALLY ADJUSTED (\$ million)**

Average of weekly figures for month of -	Deposits		Liquid assets and Government securities		Loans, advances and bills discounted (a) -			
	Original	Seasonally adjusted	Original	Seasonally adjusted	Total		Other (b)	
					Original	Seasonally adjusted	Original	Seasonally adjusted
1977 -								
November	17,728.2	17,691.1	3,803.5	3,886.3	12,963.8	12,914.6	11,086.3	11,096.4
December (c)	17,860.3	17,614.0	3,960.0	3,849.7	12,970.1	12,974.4	11,049.9	11,096.3
1978 -								
January	18,055.8	17,501.7	4,354.0	3,917.4	12,856.5	12,935.3	10,936.6	11,019.9
February	18,341.9	17,603.9	4,510.5	3,951.8	12,868.7	13,227.6	10,958.3	11,327.2
March	18,745.2	17,890.5	4,610.7	4,007.1	13,156.7	13,434.1	11,233.3	11,511.1
April	18,619.7	18,119.9	4,530.9	4,192.4	13,463.1	13,380.5	11,551.2	11,467.8
May	17,890.2	18,090.7	3,909.4	4,185.6	13,756.9	13,579.6	11,788.9	11,622.5
June	17,593.4	18,292.2	3,763.4	4,240.9	13,626.2	13,534.4	11,632.2	11,547.0
July	17,637.4	18,443.6	3,765.0	4,208.3	13,685.1	13,567.2	11,687.6	11,559.9
August	18,254.6	18,855.9	3,959.1	4,371.5	13,961.6	13,952.7	11,969.8	11,909.8
September	18,599.5	19,108.2	4,189.0	4,506.0	14,116.4	14,132.7	12,085.1	12,049.2
October	18,951.5	19,175.5	4,402.1	4,598.5	14,516.2	14,278.0	12,460.4	12,183.5
November	19,232.1	19,188.9	4,589.0	4,697.1	14,487.8	14,425.8	12,398.2	12,402.9
December (c)	19,601.2	19,334.6	4,706.8	4,579.0	14,682.7	14,680.2	12,561.4	12,605.9

VARIATION OVER PREVIOUS MONTH

1977 -								
November	+299.0	+55.0	+ 23.8	- 53.2	+ 37.6	+188.1	- 36.1	+206.8
December (c)	+132.1	- 77.1	+156.5	- 36.6	+ 6.3	+59.8	- 36.4	- 0.1
1978 -								
January	+195.5	-112.3	+394.0	+ 67.7	-113.6	- 39.1	-113.3	- 76.4
February	+286.1	+102.2	+156.5	+ 34.1	+ 12.2	+292.3	+ 21.7	+307.3
March	+403.3	+286.6	+100.2	+ 55.6	+288.0	+206.5	+265.0	+183.9
April	-125.5	+229.4	- 79.8	+185.3	+306.4	- 53.6	+327.9	- 43.3
May	-729.5	- 29.2	-621.5	- 6.8	+293.8	+199.1	+237.7	+154.8
June	-296.8	+201.5	-146.0	+ 55.3	-130.7	- 45.2	-156.7	- 75.6
July	+ 44.0	+151.4	+ 1.6	- 32.6	+ 58.9	+32.8	+ 55.4	+ 12.9
August	+617.2	+412.3	+194.1	+163.2	+276.5	+385.5	+282.2	+349.9
September	+344.9	+252.3	+229.9	+134.5	+154.8	+180.0	+115.3	+139.4
October	+352.0	+ 67.3	+213.1	+ 92.5	+399.8	+145.3	+375.3	+134.3
November	+280.6	+ 13.4	+186.9	+ 98.6	- 28.4	+147.8	- 62.2	+219.4
December (c)	+369.1	+145.7	+117.8	-118.1	+194.9	+254.4	+163.2	+203.0

(a) Excludes loans to authorised dealers in the short-term money market. (b) Excludes temporary advances to woolbuyers, term loans and farm development loans. (c) Excludes one Wednesday.

NOTE. The difference between the seasonally adjusted figures for "Loans, advances and bills discounted - total" and "Loans, advances and bills discounted - other" should not be regarded as being satisfactorily seasonally adjusted.

TABLE 9. MAJOR TRADING BANKS : NEW AND INCREASED LENDING COMMITMENTS AND OVERDRAFT LIMITS (a)(b)

Source : Reserve Bank of Australia
(\$ million)

Weekly average for period ending second Wednesday of -	New and increased lending commitments				Overdraft limits (c)		
	Term loan approvals	Farm development loan approvals	Overdraft approvals	Total approvals	Cancellations and reductions(d)	Net movement in limits	Overdraft limits outstanding (end of period)
1977 -							
November	14.8	3.3	116.7	134.8	78.1	38.5	15,254.3
December	10.6	3.6	102.5	116.7	81.4	21.1	15,359.8
1978 -					(e)	(e)	(e)15,680.0
January	6.9	3.1	99.6	109.6			15,806.7
February	7.7	2.8	102.4	112.8			15,906.2
March	8.0	4.2	113.1	125.4	88.3	24.9	16,197.0
April	6.9	3.8	116.5	127.1	58.3	58.2	16,385.1
May	7.9	3.3	132.0	143.2	85.0	47.0	16,594.7
June	10.2	3.4	136.3	149.8	94.4	41.9	16,793.2
July	8.1	4.1	144.0	156.1	94.4	49.6	16,936.7
August	7.7	4.8	131.6	144.0	95.7	25.9	17,082.2
September	10.9	4.4	120.0	135.3	90.9	29.1	17,214.9
October	8.2	4.6	114.3	127.1	81.1	33.2	17,313.5
November	8.3	4.4	120.0	132.7	95.4	24.6	17,462.8
December	12.2	5.4	118.8	136.4	89.0	29.9	

(a) Includes External Territories. (b) Excludes commitments in respect of commercial bills, charge cards, temporary advances to woolbuyers. Includes bridging finance, personal instalment lending and lease financing. (c) Excludes commitments in respect of term loans and farm development loans. (d) Derived by subtracting weekly average of change in overdraft limits outstanding from overdraft approvals. Figures are approximations only due to unavoidable differences in the basis of compilation of the two series. (e) Break in series due to a change in accounting procedures.

SECTION 2. - SAVINGS BANKS

TABLE 10. SAVINGS BANKS: ASSETS AND LIABILITIES WITHIN AUSTRALIA (a)

	Assets														Liabilities			
	Coin, bullion and notes	Deposits with Reserve Bank	Deposits with trading banks	Australian and State Government securities		Local and semi-government securities	Loans to authorised dealers in the short-term money market	Cheques and bills of other banks and balances with and due from other banks		Loans, advances and bills discounted		Bank premises furniture and sites	Bills receivable and all other assets	Total assets within Australia	Liabilities due to other banks, bills payable and all other liabilities (b)		Total liabilities within Australia	
				Treasury bills and Treasury notes	Other			Housing	Other	Depositors' balances								
AMOUNT (\$ million)																		
1977 -																		
November	55.8	1,177.3	181.0	94.7	2,779.2	4,649.1	38.9	55.0	303.4	7,711.9	885.3	258.4	92.3	18,282.4	17,109.2	809.6	17,918.7	
December	55.2	1,096.8	203.9	122.0	2,770.6	4,720.5	31.5	96.9	315.0	7,821.1	827.8	263.2	109.7	18,434.2	17,253.8	821.1	18,074.9	
1978 -																		
January	51.1	1,093.6	214.4	180.5	2,774.4	4,763.3	35.0	87.4	290.5	7,875.2	835.5	274.4	86.5	18,561.8	17,385.6	815.8	18,201.3	
February	54.1	1,034.2	239.5	310.7	2,775.7	4,791.5	34.2	102.9	282.3	7,940.3	839.7	277.4	90.0	18,772.6	17,548.9	864.4	18,413.3	
March	46.0	1,158.6	183.3	182.0	2,785.3	4,840.2	30.5	49.8	331.9	8,098.9	863.9	281.6	123.4	18,975.3	17,458.6	1,156.6	18,615.2	
April	42.6	1,167.8	211.2	68.1	2,757.1	4,854.6	25.0	100.9	337.2	8,208.2	816.9	287.2	125.5	19,003.1	17,414.5	1,228.7	18,643.1	
May	51.0	1,109.2	195.9	79.8	2,672.5	4,854.9	26.9	73.1	292.3	8,306.6	868.1	291.7	86.8	18,908.8	17,655.6	893.3	18,548.9	
June	45.0	1,122.6	199.9	72.2	2,600.4	4,880.2	27.4	139.1	339.2	8,393.8	813.9	284.8	107.2	19,025.5	18,052.3	596.2	18,648.4	
July	49.7	1,158.0	197.6	100.0	2,606.2	4,911.6	38.1	55.2	324.4	8,458.9	867.2	284.8	164.3	19,215.9	18,227.6	588.6	18,816.2	
August	36.3	1,138.3	223.1	105.2	2,599.0	4,964.6	38.3	109.2	328.1	8,533.9	942.7	283.4	132.0	19,434.0	18,387.3	646.8	19,034.1	
September	39.7	1,120.3	247.2	130.8	2,600.7	5,012.8	38.3	79.7	328.1	8,685.7	1,003.5	286.5	227.1	19,860.5	18,542.8	921.8	19,464.6	
October	50.5	1,131.8	190.1	152.6	2,676.3	5,079.6	38.3	76.1	306.5	8,782.9	991.4	290.6	127.6	19,894.0	18,641.4	850.7	19,492.0	
November	58.9	1,184.0	186.9	177.2	2,636.3	5,135.7	38.3	66.5	311.1	8,878.5	958.1	295.4	129.0	20,055.7	18,683.1	967.7	19,650.8	
December	60.9	1,067.2	201.7	265.8	2,544.2	5,180.3	38.3	95.8	297.5	8,991.6	967.0	301.5	152.2	20,164.0	18,875.5	883.8	19,759.2	
PROPORTION OF ASSET ITEMS TO DEPOSITORS' BALANCES WITHIN AUSTRALIA (per cent)																		
1977 -																		
November	0.3	6.9	1.1	0.6	16.2	27.2	0.2	0.3	1.8	45.1	5.2	1.5	0.5	106.9				
December	0.3	6.4	1.2	0.7	16.1	27.4	0.2	0.6	1.8	45.3	4.8	1.5	0.6	106.8				
1978 -																		
January	0.3	6.3	1.2	1.0	16.0	27.4	0.2	0.5	1.7	45.3	4.8	1.6	0.5	106.8				
February	0.3	5.9	1.4	1.8	15.8	27.3	0.2	0.6	1.6	45.2	4.8	1.6	0.5	107.0				
March	0.3	6.6	1.0	1.0	16.0	27.7	0.2	0.3	1.9	46.4	4.9	1.6	0.7	108.7				
April	0.2	6.7	1.2	0.4	15.8	27.9	0.1	0.6	1.9	47.1	4.7	1.6	0.7	109.1				
May	0.3	6.3	1.1	0.5	15.1	27.5	0.2	0.4	1.7	47.0	4.9	1.7	0.5	107.1				
June	0.2	6.2	1.1	0.4	14.4	27.0	0.2	0.8	1.9	46.5	4.5	1.6	0.6	105.4				
July	0.3	6.4	1.1	0.5	14.3	26.9	0.2	0.3	1.8	46.4	4.8	1.6	0.9	105.4				
August	0.2	6.2	1.2	0.6	14.1	27.0	0.2	0.6	1.8	46.4	5.1	1.5	0.7	105.7				
September	0.2	6.0	1.3	0.7	14.0	27.0	0.2	0.4	2.1	46.8	5.4	1.5	1.2	107.1				
October	0.3	6.1	1.0	0.8	14.4	27.2	0.2	0.4	1.6	47.1	5.3	1.6	0.7	106.7				
November	0.3	6.3	1.0	0.9	14.1	27.5	0.2	0.4	1.7	47.5	5.1	1.6	0.7	107.3				
December	0.3	5.7	1.1	1.4	13.5	27.4	0.2	0.5	1.6	47.6	5.1	1.6	0.5	106.8				

(a) Includes External Territories. (b) Includes provisions for contingencies but does not include capital or reserve funds.

TABLE 11. SAVINGS BANKS ACCOUNTS, DEPOSITS, WITHDRAWALS, INTEREST ADDED TO ACCOUNTS
DEPOSITORS' BALANCES (ORIGINAL AND SEASONALLY ADJUSTED) AND DEPOSITORS' BALANCES PER HEAD OF POPULATION (a)

	No. of opening accounts ('000)			Depositors' balances at end of month (\$ million)				Variation in depositors' balances over previous month (\$ million)		Depositors' balances per head of population (b) (\$)			
	Investment accounts/ deposit stock	Other	Total	Deposits (\$ million)	Withdrawals (\$ million)	Interest added to accounts (\$ million)	Investment accounts/ deposit stock	Other	Total Original		Seasonally adjusted	Original	Seasonally adjusted
												Original	Seasonally adjusted
AUSTRALIA													
1977 -													
November	1,475	19,145	20,620	3,713.3	3,698.6	5.9	6,480.7	10,622.5	17,103.2	16,983.5	+ 21.2	+101.4	1,212
December	1,485	19,153	20,638	3,758.2	3,630.6	17.0	6,557.5	10,690.4	17,247.9	17,140.3	+144.7	+156.8	1,218
1978 -													
January	1,499	19,249	20,747	3,300.0	3,173.0	4.8	6,484.1	10,695.5	17,379.6	17,324.7	+131.7	+184.4	1,227
February	1,508	19,422	20,930	3,418.1	3,267.0	12.3	6,755.5	10,787.6	17,543.1	17,451.0	+163.5	+126.3	1,239
March	1,506	19,379	20,885	3,777.0	3,875.0	7.7	6,660.9	10,791.8	17,452.7	17,550.5	- 90.4	+ 99.5	1,228
April	1,504	19,443	20,947	3,656.7	3,709.7	8.9	6,572.1	10,836.5	17,408.7	17,700.8	- 48.0	+150.3	1,225
May	1,506	19,486	20,992	3,984.7	4,038.4	294.8	6,707.9	10,941.9	17,649.7	17,931.0	+241.0	+230.2	1,242
June	1,510	19,514	21,024	3,875.2	3,889.2	410.5	6,832.0	11,214.3	18,046.3	18,081.0	+396.6	+150.0	1,267
July	1,513	19,544	21,057	3,994.6	3,820.9	1.8	6,861.3	11,360.5	18,221.8	18,262.0	+175.5	+181.0	1,279
August	1,523	19,499	21,021	4,369.4	4,219.9	10.2	6,909.7	11,471.8	18,381.4	18,360.5	+159.6	+ 98.5	1,290
September	1,527	19,510	21,038	3,819.7	3,679.6	15.5	6,947.1	11,589.8	18,537.0	18,395.2	+155.6	+ 34.7	1,301
October	1,526	19,550	21,076	4,154.9	4,060.5	4.1	6,948.0	11,667.5	18,635.5	18,417.3	+ 98.5	+ 22.1	1,308
November	1,529	19,446	20,975	4,322.1	4,287.2	6.9	7,030.0	11,647.2	18,677.2	18,543.1	+ 41.7	+125.8	1,311
December	1,533	19,433	20,966	4,149.4	4,043.4	86.3	7,165.4	11,704.2	18,869.5	18,746.5	+192.3	+203.4	1,324
STATES - OCTOBER 1978													
New South Wales	333	6,377	6,710	885.6	848.5	1.0	1,672.3	3,759.9	5,432.2		+ 38.2		1,084
Victoria	643	6,187	6,831	1,982.7	1,945.2	1.1	2,830.7	3,988.3	6,819.0		+ 38.6		1,786
Queensland	199	2,885	2,884	469.3	464.3	0.5	949.2	1,575.3	2,524.5		+ 5.4		1,165
South Australia	208	1,924	2,131	460.0	452.1	1.1	875.1	1,105.5	1,980.6	(c)	+ 8.9	(c)	1,538
Western Australia	79	1,638	1,516	188.3	184.1	0.3	389.7	709.8	1,079.5		+ 4.5		883
Tasmania	46	589	635	104.2	99.3	0.2	181.5	373.6	555.1		+ 5.1		1,342
Northern Territory	5	126	131	22.3	22.1	-	25.6	55.5	81.1		+ 1.1		722
Aust. Cap. Terr.	14	225	238	42.5	44.9	-	63.8	99.7	163.5		- 2.4		757
STATES - NOVEMBER 1978													
New South Wales	335	6,389	6,724	996.1	994.3	1.8	1,691.1	3,744.7	5,435.8		+ 3.6		1,085
Victoria	643	6,068	6,711	1,901.8	1,887.1	2.0	2,842.8	3,992.9	6,835.6		+ 16.6		1,790
Queensland	199	2,898	2,897	538.1	529.6	0.8	957.8	1,576.2	2,533.9		+ 9.4		1,169
South Australia	208	1,907	2,116	499.9	493.6	1.0	888.7	1,099.3	1,988.0	(c)	+ 7.4	(c)	1,544
Western Australia	75	1,440	1,519	215.3	211.9	0.3	376.6	706.5	1,083.2		+ 3.7		886
Tasmania	46	592	638	95.2	95.6	0.3	182.5	372.4	554.9		- 0.2		1,341
Northern Territory	5	127	132	27.3	27.0	0.6	25.7	56.3	81.9		+ 0.8		729
Aust. Cap. Terr.	14	225	239	48.4	48.0	-	64.9	99.1	163.9		+ 0.4		759
STATES - DECEMBER 1978													
New South Wales	338	6,358	6,696	902.8	888.1	26.5	1,730.4	3,746.6	5,477.0		+ 41.2		1,093
Victoria	643	6,109	6,752	1,924.7	1,868.7	20.3	2,882.2	4,033.8	6,916.0		+ 80.4		1,811
Queensland	199	2,893	2,892	476.0	460.3	12.6	977.4	1,584.8	2,562.2		+ 28.3		1,183
South Australia	209	1,911	2,119	480.1	466.8	19.9	912.7	1,108.4	2,021.1	(c)	+ 33.1	(c)	1,570
Western Australia	79	1,418	1,497	188.8	190.7	4.4	385.4	700.2	1,085.6		+ 2.4		888
Tasmania	46	591	637	101.3	100.8	1.4	184.4	372.4	556.8		+ 1.9		1,346
Northern Territory	5	128	133	21.1	24.0	0.3	25.8	54.6	80.4		- 1.5		716
Aust. Cap. Terr.	14	226	240	43.6	44.1	1.0	67.1	103.3	170.4		+ 6.5		789

(a) Excludes External Territories. (b) Based on population estimates published in *Population and Vital Statistics: June Quarter 1978* (3111.0). (c) State seasonally adjusted data are not available.

SECTION 3. RESERVE BANK OF AUSTRALIA

TABLE 12. CENTRAL BANKING BUSINESS (INCLUDING NOTE ISSUE DEPARTMENT): LIABILITIES AND ASSETS WITHIN AUSTRALIA AND OVERSEAS AND RURAL CREDITS DEPARTMENT - LOANS, ADVANCES AND BILLS DISCOUNTED

LIABILITIES (\$ million)											
Central banking business (including Note Issue Department)											
Average of weekly figures for month of -	Capital and reserve funds	Special reserve - I.M.F. special drawing rights	Notes on issue	Deposits of trading banks					Deposits of savings banks	Other liabilities	Total liabilities
				Statutory reserve deposit accounts	Term loan fund account	Farm development loan fund account	Other	Total			
1977 -											
November	45.6	219.0	3,458.7	1,144.5	46.7	20.1	5.0	1,216.3	1,193.8	2,272.8	8,406.2
December (a)	45.6	221.7	3,786.0	1,163.5	39.6	14.3	4.6	1,222.1	1,121.8	2,384.0	8,781.1
1978 -											
January	45.6	222.6	3,595.4	1,176.0	32.0	9.7	15.9	1,233.4	1,100.1	2,352.5	8,549.6
February	45.6	223.8	3,558.4	1,187.2	31.8	8.3	6.4	1,233.6	1,056.8	2,477.1	8,595.2
March	45.6	225.5	3,649.2	1,204.8	29.7	7.9	5.8	1,248.3	1,111.3	2,689.5	8,969.3
April	45.6	226.1	3,723.1	1,040.5	25.5	4.3	23.7	1,094.1	1,168.0	2,521.2	8,778.0
May	45.6	218.4	3,687.5	757.0	7.0	1.8	5.3	784.9	1,141.0	2,439.3	8,290.9
June	45.6	218.4	3,687.5	757.0	7.0	0.2	5.8	747.9	1,109.4	2,536.5	8,345.2
July	45.6	219.8	3,716.3	718.4	4.3	-	5.3	728.1	1,147.3	2,478.0	8,335.1
August	45.6	222.6	3,768.2	717.1	2.2	-	8.7	728.0	1,153.5	2,559.9	8,477.7
September	45.6	223.7	3,798.6	667.0	14.5	7.6	5.8	694.9	1,133.7	2,760.0	8,656.4
October	45.6	225.4	3,826.7	658.7	18.6	5.0	5.5	687.9	1,123.6	2,619.6	8,528.9
November	45.6	227.5	3,859.6	672.9	11.3	8.2	9.3	721.7	1,161.5	2,754.9	8,770.9
December (a)	45.6	227.5	4,198.2	682.2	28.0	5.8	5.1	721.2	1,115.8	2,495.9	8,804.2
ASSETS (\$ million)											
Central banking business (including Note Issue Department)											
Average of weekly figures for month of -	Gold and foreign exchange	Australian notes and coin	Cheques and bills of other banks	Australian government securities			Bills receivable and remittances in transit	Loans, advances and other assets	Total assets	Rural Credits Department - Loans, advances and bills discounted	
				Treasury bills and Treasury notes	Other	Total					
1977 -											
November	2,790.2	32.5	6.2	2,449.9	2,403.2	4,853.2	62.2	661.9	8,406.2	429.0	
December (a)	2,875.7	39.0	3.8	2,671.5	2,323.7	4,995.2	101.6	765.9	8,781.1	482.9	
1978 -											
January	2,671.7	34.2	3.6	2,978.1	1,935.0	4,913.1	67.8	859.2	8,549.6	715.6	
February	2,627.9	36.5	3.6	2,971.3	1,955.3	4,926.7	73.0	927.5	8,595.2	811.1	
March	2,682.3	38.5	5.4	3,211.5	2,080.9	5,292.5	68.9	881.8	8,969.3	779.0	
April	3,102.6	35.6	8.8	2,455.9	2,405.0	4,861.0	87.5	682.5	8,778.0	569.0	
May	2,973.5	33.4	6.3	1,779.2	2,638.3	4,417.5	142.0	718.1	8,290.9	524.5	
June	3,087.4	35.1	4.0	1,787.0	2,660.2	4,447.2	82.5	689.1	8,345.2	480.9	
July	2,972.0	36.3	3.3	1,937.9	2,642.1	4,600.0	69.5	654.1	8,335.1	453.0	
August	3,016.6	38.2	3.1	2,026.4	2,756.1	4,782.5	45.5	591.8	8,477.7	398.5	
September	3,116.3	34.0	3.1	2,213.7	2,657.2	4,870.8	76.4	555.8	8,656.4	341.5	
October	2,976.4	37.5	2.8	2,630.5	2,175.8	4,906.3	71.5	534.3	8,528.9	291.2	
November	3,192.2	36.7	3.1	2,709.9	2,335.9	5,045.8	37.9	455.1	8,770.9	250.0	
December (a)	3,151.9	44.3	4.4	2,414.2	2,581.5	4,995.7	57.2	550.6	8,804.2	244.6	

(a) Excludes one Wednesday.

TABLE 13. AUSTRALIAN NOTE ISSUE - VALUE OF AUSTRALIAN NOTES OUTSTANDING
(\$ million)

On Last Wednesday of -	Denomination						Total	Total held by banks	Total held by public
	\$1	\$2	\$5	\$10	\$20	\$50			
1977 -									
November	60.3	138.2	127.4	627.8	1,580.0	955.2	3,488.9	418.5	3,070.4
December	65.8	149.3	138.8	684.2	1,786.5	1,230.3	4,055.0	625.0	3,430.0
1978 -									
January	59.6	133.4	124.0	604.9	1,541.9	1,044.6	3,508.3	416.3	3,092.0
February	59.2	134.3	124.3	610.2	1,570.6	1,038.3	3,526.9	421.6	3,115.3
March	61.9	141.1	131.0	644.5	1,715.0	1,104.2	3,797.6	552.1	3,245.6
April	61.7	140.3	130.5	626.2	1,664.6	1,101.8	3,725.1	517.1	3,208.0
May	60.8	135.9	126.6	605.5	1,605.8	1,101.0	3,635.6	430.9	3,204.7
June	60.8	136.0	126.7	604.5	1,620.5	1,121.7	3,670.2	413.1	3,257.1
July	60.8	136.0	127.0	601.6	1,629.1	1,150.5	3,705.1	423.6	3,281.5
August	61.7	137.5	129.0	607.1	1,677.5	1,201.7	3,814.6	452.8	3,361.8
September	61.8	137.1	128.8	602.6	1,679.8	1,220.3	3,830.5	409.0	3,421.6
October	62.2	137.7	129.4	598.4	1,680.9	1,236.1	3,844.7	467.2	3,377.5
November	63.8	140.8	133.2	604.5	1,688.9	1,254.0	3,885.2	449.5	3,435.7
December	69.4	152.5	145.7	663.5	1,913.9	1,558.7	4,503.7	673.4	3,830.3

Week ended -	Held by banks	Held by public	Total	Week ended -	Held by banks	Held by public	Total
4 October	440.2	3,374.1	3,814.2	22 November	474.6	3,411.0	3,885.5
11 October	474.3	3,369.4	3,843.7	29 November	449.5	3,435.7	3,885.2
18 October	429.6	3,374.7	3,804.4	6 December	503.6	3,473.7	3,977.3
25 October	467.2	3,377.5	3,844.7	13 December	532.8	3,549.9	4,082.7
1 November	430.5	3,380.5	3,811.0	20 December	638.0	3,896.7	4,534.6
8 November	481.0	3,397.2	3,878.1	27 December	673.4	3,830.3	4,503.7
15 November	436.8	3,401.5	3,838.3				

SECTION 4. MISCELLANEOUS

TABLE 14. COMMONWEALTH DEVELOPMENT BANK OF AUSTRALIA
LOANS, ADVANCES AND BILLS DISCOUNTED
(\$ million)

Average of weekly figures for month of -	Hire purchase	Other	Total
1977 -			
November	96.1	314.8	410.9
December (a)	97.9	330.1	428.0
1978 -			
January	96.9	327.7	424.6
February	93.1	325.8	418.9
March	89.5	330.9	420.4
April	90.7	349.5	440.2
May	93.4	350.2	443.6
June	95.3	362.8	458.1
July	99.6	344.4	444.0
August	100.4	342.9	443.3
September	100.1	341.6	441.8
October	100.4	339.2	439.6
November	103.1	337.2	440.3
December (a)	105.6	353.0	458.6

	October 1978			November 1978			December 1978		
	Hire purchase	Other	Total	Hire purchase	Other	Total	Hire purchase	Other	Total
New South Wales (b)	40.8	104.0	144.7	41.9	102.3	144.3	43.3	107.8	151.1
Victoria	18.3	44.5	62.7	18.8	43.6	62.4	19.4	45.4	64.8
Queensland	16.1	75.0	91.1	16.7	75.0	91.6	16.7	78.0	94.7
South Australia	7.0	43.6	50.6	7.4	43.5	50.8	7.8	45.5	53.2
Western Australia	15.0	62.1	77.1	15.3	62.6	77.9	15.6	65.7	81.3
Tasmania	3.2	10.2	13.4	3.0	10.2	13.2	3.0	10.6	13.5

(a) Excludes one Wednesday. (b) Includes advances in Australian Capital Territory and Northern Territory for which Territory dissections are not available; October \$5.9 million; November \$5.9; December \$6.3 million.

TABLE 15. AUSTRALIAN RESOURCES DEVELOPMENT BANK
SELECTED LIABILITIES AND ASSETS WITHIN AUSTRALIA
(£ million)

LIABILITIES						
Average of weekly figures for month of -	Deposits			Balances due to other banks		Other liabilities (excluding shareholders' funds)
	Transferable deposits	Negotiable certificates of deposit	Term deposits	Loan capital	Other	
1977 -						
November	453.8	1.1	4.3	2.3	53.5	0.4
December (a)	468.2	0.5	4.2	2.3	47.4	0.2
1978 -						
January	469.4	-	4.6	2.3	47.6	0.3
February	471.3	-	4.6	2.3	47.6	0.3
March	471.8	-	4.3	2.3	47.5	0.4
April	467.9	-	4.3	2.3	47.9	1.9
May	468.4	-	4.3	2.3	53.1	0.3
June	473.1	-	4.3	2.3	63.5	0.2
July	477.2	4.9	4.3	2.3	55.1	0.1
August	482.6	9.8	4.3	2.3	49.8	5.2
September	458.6	9.8	4.3	2.3	49.8	0.1
October	463.1	4.9	4.3	2.3	57.9	7.2
November	463.9	2.0	4.3	2.3	63.6	0.2
December (a)	463.9	9.8	4.4	2.3	62.0	0.2
ASSETS						
Average of weekly figures for month of -	Government securities	Loans to authorised dealers in the short-term money market	Refinanced loans and direct loans	Other assets		
1977 -						
November	0.1	1.4	623.8		2.8	
December (a)	0.1	0.4	633.8		10.4	
1978 -						
January	3.8	1.2	612.2		10.5	
February	5.7	0.5	633.7		7.7	
March	1.6	0.8	639.8		1.2	
April	2.8	1.0	626.4		13.9	
May	0.9	0.5	645.5		0.6	
June	0.1	0.9	660.1		1.0	
July	0.1	0.4	662.6		0.9	
August	0.1	0.5	664.5		6.0	
September	0.1	0.1	671.4		0.5	
October	0.1	3.0	651.1		4.1	
November	0.1	1.6	652.1		0.6	
December (a)	0.1	0.4	656.9		0.6	

(a) Excludes one Wednesday.

TABLE 16. INTEREST RATES AT 31 DECEMBER 1978
Source: Reserve Bank of Australia

	Rate per annum %	Date from which operative	Previous rate per annum %
LENDING RATES			
Reserve Bank of Australia - Rural Credits Department	9.00-9.50	Dec. 1978	9.50-10.00
Commonwealth Development Bank of Australia -			
Rural	(basic) 9.50	Dec. 1978	10.50
Industrial	(basic) 10.00	Dec. 1978	10.50
Trading Banks -			
Overdraft (under \$100,000) (a)	10.50	Feb 1976	11.50
Overdraft (\$100,000 and over)	(b)	Feb 1972	8.25
Unsecured personal loans (a) (c)	7.75	Feb 1976	7.25
Savings Banks -			
Housing loans to individuals	(d) 8.75-9.50	Dec. 1978	8.75-10.00
Other loans (under \$100,000) (a)	10.50	Feb 1976	11.50
Other loans (\$100,000 and over)	(b)	Mar. 1972	7.75
DEPOSIT RATES			
Trading Banks -			
Fixed deposits (less than \$50,000)			
3 months and less than 6 months	7.25-7.50	Dec. 1978	7.50-7.75
6 months and less than 24 months	7.75-8.50	Dec. 1978	8.00-9.00
24 months to 48 months	8.00-9.00	Dec. 1978	8.00-9.50
Fixed deposits (\$50,000 and over) (a) (b)			
30 days to 48 months	10.00	July 1974	8.00
Certificates of deposit (\$50,000 and over) (b)			
3 months to 48 months	(e)	Sept. 1974	6.50
Savings Banks (f) -			
Ordinary accounts			
0% to and including \$4,000	(g) 3.75-5.00	Dec. 1978	(g) 3.75-5.25
Over \$4,000	(g) 5.00-6.25	Apr. 1978	(g) 6.00-6.50
Investment accounts (h)	7.25-8.25	Dec. 1978	7.50-8.50
Australian Resources Development Bank Ltd -			
Term deposits (i)			
- 4 years	9.25	Jan. 1978	10.00
- 5 years	9.50	Jan. 1978	10.00
Transferable deposits (j)			
- 5 years	9.60	June 1978	10.50
- 7 years	9.70	June 1978	10.60
- 10 years	9.70	June 1978	10.60

(a) Maximum rate. (b) Actual rates are a matter for negotiation between banks and their customers. (c) Flat rate. (d) Standard range of rates on new loans. (e) Not subject to maximum rate. (f) For other than society accounts the maximum interest bearing amount of \$20,000 in any one account was removed on 19.3.74 for Ordinary accounts, and investment accounts. There is no limit on the maximum interest bearing amount for society accounts. (g) For the majority of banks, the lower rate quoted has predominated; however, for amounts over \$4,000, the rate offered by most banks since March 1978 has continued to be 6.00%. (h) Subject to special notice and minimum balance requirements. (i) Minimum deposit \$10,000 and thereafter in multiples of \$1,000. (j) Public Issue Rates. Minimum deposit \$100 and thereafter in multiples of \$100.

TABLE 17. SECURITY YIELDS AND SHORT-TERM MONEY MARKET INTEREST RATES

Source : Reserve Bank of Australia
(Per cent per annum)

Month (a)	Australian Government securities					Short-term money market weighted average rate on loans outstanding (e)
	Treasury Notes (b)		Non-rebateable bonds (c) (d)			
	13 week notes	26 week notes	2 year	10 year	20 year	
1977 -						
November	8.35	8.75	9.27	9.79	9.80	9.46
December	6.35	8.75	9.26	9.50	9.50	8.99
1978 -						
January	8.35	8.75	8.99	9.36	9.36	8.65
February	8.35	8.75	8.83	9.20	9.20	8.32
March	8.35	8.75	8.83	9.20	9.20	8.15
April	8.35	8.75	8.83	9.17	9.16	7.84
May	8.35	8.75	8.82	9.10	9.10	9.10
June	8.35	8.75	8.83	9.10	9.10	9.05
July	8.35	8.75	8.83	9.10	9.10	8.91
August	8.35	8.71	8.79	9.00	9.00	9.09
September	8.35	8.71	8.79	9.00	9.00	9.27
October	8.35	8.71	8.69	8.89	8.89	9.74
November	8.35	8.62	8.66	8.80	8.80	8.11
December	8.35	8.62	8.67	8.80	8.80	8.39

(a) Data are compiled at or near the end of the month, except for the short-term money market (see footnote (e)). (b) Issue yield. (c) Bonds issued from 1 November 1968 are referred to as "Non-rebateable" bonds. Bonds issued prior to that date are referred to as "Rebateable" bonds because income from them is subject to income tax at current rates, less a rebate of 10 cents in each dollar of Australian Government loan interest included in taxable income. (d) Average for week centred on last Wednesday of month; security yields shown are those applying if no brokerage is charged. Theoretical yields are shown. (e) Weighted average of rates paid on all days of the four or five weeks ending on the last Wednesday of the month.

TABLE 18. VOLUME OF MONEY
Source : Reserve Bank of Australia
(\$ million)

Average of weekly figures for month of -	Notes and coin in hands of public	Deposits of public with all trading banks (a)			Deposits with all savings banks (b)	Total Original	Seasonally adjusted
		Current	Fixed	Certificates of deposit			
1977 -							
November	3,280	7,580	8,889	1,313	17,099	38,161	
December (c)	3,503	7,840	9,061	1,129	17,181	38,715	
1978 -							
January	3,390	7,876	9,330	911	17,320	38,827	
February	3,355	7,935	9,621	816	17,467	39,193	
March	3,442	8,023	10,028	766	17,504	39,763	
April	3,451	7,982	9,952	695	17,437	39,517	
May	3,466	7,691	9,528	759	17,535	39,879	
June	3,495	7,724	9,314	812	17,854	39,199	
July	3,528	7,753	9,410	808	18,140	39,639	
August	3,584	7,781	9,972	795	18,307	40,440	
September	3,639	7,854	10,260	809	18,465	41,027	
October	3,643	8,036	10,486	802	18,592	41,559	
November	3,672	8,293	10,630	751	18,662	42,007	
December (c)	3,908	8,754	10,630	720	18,779	42,792	

(a) Excludes Government and inter-bank deposits, but includes deposits of the public with the Reserve Bank; certificates of deposit include say holdings by Australian and State Governments and banks. (b) Interpolated "weekly average" based on end of month figures. (c) Excludes one Wednesday.

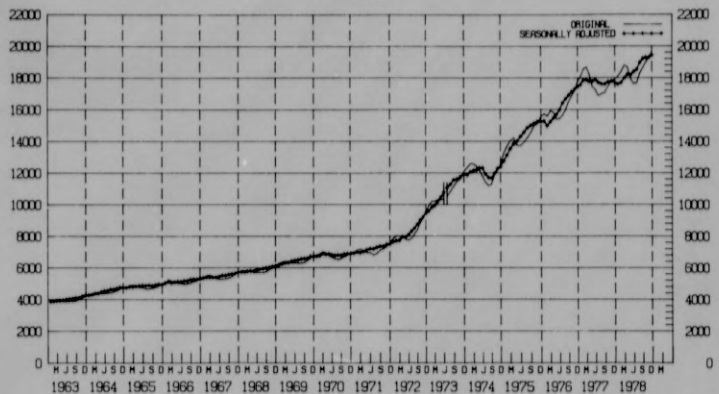
TABLE 19. OVERSEAS EXCHANGE RATES (a)
TELEGRAPHIC TRANSFER RATES FOR AUSTRALIA ON OVERSEAS COUNTRIES - continued
(UNITS OF FOREIGN CURRENCY TO \$A.1)

	Sweden Kroner to \$A.1		Switzerland Francs to \$A.1		Thailand Bahts to \$A.1		United Kingdom Pounds to \$A.1	
	Buying	Selling	Buying	Selling	Buying	Selling	Buying	Selling
Year ended -								
June 1978	5.278	5.201	2.396	2.361	23.22	22.61	0.621	0.615
December 1978	5.206	5.130	2.059	2.027	23.49	22.86	0.600	0.593
1977 -								
November	5.443	5.365	2.501	2.465	23.16	22.56	0.623	0.616
December	5.427	5.350	2.378	2.343	23.29	22.60	0.616	0.609
1978 -								
January	5.356	5.274	2.284	2.247	23.57	22.81	0.593	0.586
February	5.310	5.234	2.189	2.155	23.41	22.79	0.588	0.582
March	5.283	5.203	2.170	2.135	23.55	22.90	0.599	0.592
April	5.281	5.201	2.176	2.141	23.53	22.91	0.619	0.612
May	5.287	5.208	2.232	2.199	23.25	22.67	0.624	0.617
June	5.288	5.210	2.160	2.129	23.38	22.75	0.623	0.616
July	5.256	5.179	2.089	2.059	23.59	22.98	0.611	0.604
August	5.154	5.075	1.933	1.903	23.58	22.95	0.597	0.591
September	5.141	5.067	1.827	1.799	23.49	22.87	0.592	0.585
October	5.051	4.979	1.810	1.782	23.66	23.04	0.584	0.580
November	5.034	4.962	1.921	1.892	23.48	22.87	0.586	0.580
December	5.041	4.970	1.931	1.902	23.36	22.75	0.579	0.573

(a) Average for the period based on daily quotations by the Commonwealth Trading Bank of Australia. (b) "Convertible" rate for trade transactions accompanied by documentation, and "Financial" rate for other transactions. (c) Daily quotations available on application to the Commonwealth Trading Bank of Australia.

NOTE. On 29 November 1976 the Australian dollar was devalued by 17½ per cent and a changed pattern of management was adopted. The level of the exchange rate, based on a variable link to a trade-weighted 'basket' of currencies, is kept under review and adjusted along the lines of a managed float.

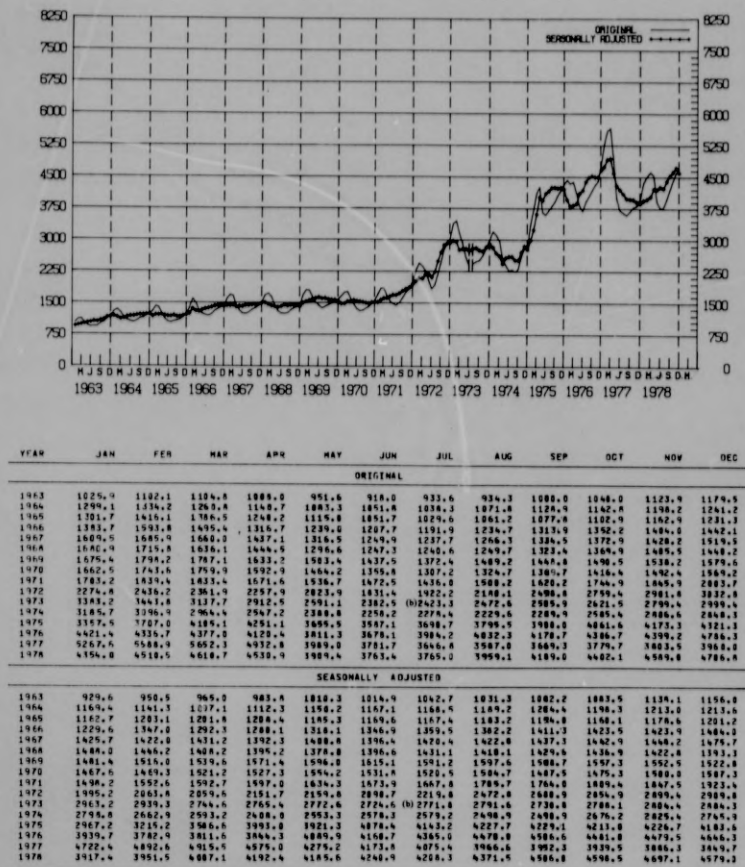
SECTION 7 - REVISED SEASONALLY ADJUSTED BANKING SERIES

TABLE 20. MAJOR TRADING BANKS - TOTAL DEPOSITS (a)
\$ million

YEAR	JAN	FEB	MAR	APR	MAY	JUN	JUL	AUG	SEP	OCT	NOV	DEC
ORIGINAL												
1963	3422.3	3942.8	3970.5	3935.0	3863.8	3846.9	3874.9	3863.4	3913.8	4015.9	4121.0	4225.3
1964	4302.1	4369.0	4478.1	4418.9	4358.7	4378.2	4349.3	4411.5	4487.5	4551.3	4674.9	4779.3
1965	4749.7	4874.9	4899.6	4826.4	4736.2	4746.4	4651.6	4678.1	4705.2	4778.1	4865.8	4978.8
1966	5044.4	5222.8	5155.1	5095.9	5010.4	4992.5	4938.5	4983.7	5029.4	5125.3	5217.9	5374.9
1967	5182.4	5449.2	5515.9	5372.9	5310.2	5266.8	5258.4	5298.4	5342.2	5466.5	5592.5	5717.1
1968	5814.4	5815.2	6311.5	6759.4	6688.7	6697.9	6682.5	6668.1	6744.8	6887.1	6979.2	6110.3
1969	6245.7	6349.0	6378.5	6356.2	6265.8	6277.1	6245.4	6258.6	6310.8	6452.7	6603.9	6758.5
1970	6759.8	6870.1	6905.8	6891.4	6726.2	6823.3	6829.9	6840.7	6867.1	6885.7	6945.4	6945.4
1971	6946.2	7091.4	7149.0	7044.7	6915.2	6912.0	6772.8	6899.3	7091.2	7181.5	7342.0	7605.8
1972	7833.0	7988.5	7952.4	7997.6	7770.4	7719.3	7865.2	8130.8	8397.9	8826.3	9139.0	9449.3
1973	9932.3	10186.7	10184.4	10292.1	10266.8	10320.9	10493.0	10812.6	11133.2	11451.3	11608.9	12066.3
1974	12296.8	12544.7	12516.3	12374.6	12295.3	11754.8	11350.4	11162.5	11249.5	11808.4	12119.4	12582.3
1975	13174.2	13628.3	13962.7	14159.5	13708.0	13655.3	13949.7	14179.6	14497.0	14943.1	15066.5	15580.1
1976	15674.6	15531.1	15872.0	15774.6	15347.9	15385.2	15613.8	15957.9	16456.3	16830.9	17126.5	17704.0
1977	18021.5	18513.8	18628.6	18181.1	17801.0	17197.8	16831.8	16994.2	17034.7	17429.2	17728.2	17860.3
1978	18055.8	18341.9	18745.2	18619.7	17840.2	17593.4	17637.4	18254.6	18599.5	18951.5	19232.1	19401.2
SEASONALLY ADJUSTED												
1963	3813.1	3830.6	3864.7	3867.5	3878.6	3918.5	3955.4	3994.8	4025.9	4036.3	4130.4	4174.5
1964	4195.3	4229.0	4297.9	4307.6	4411.8	4467.3	4488.7	4557.7	4573.3	4619.9	4685.9	4677.4
1965	4670.1	4720.2	4715.5	4759.5	4740.4	4795.0	4795.1	4829.1	4793.9	4848.0	4877.1	4874.4
1966	4957.3	5058.2	4968.0	5033.8	5063.8	5043.5	5092.5	5103.2	5169.1	5203.0	5187.1	5229.9
1967	5277.3	5315.7	5316.8	5311.9	5318.2	5361.0	5426.1	5429.5	5489.9	5528.6	5568.6	5642.1
1968	6054.6	6034.4	6075.8	5996.9	5992.3	5978.4	5815.4	5858.1	5988.7	5927.2	5994.7	6127.9
1969	6094.0	6158.3	6219.3	6238.1	6315.1	6378.5	6397.8	6444.5	6488.7	6497.6	6515.8	6518.8
1970	6628.0	6671.3	6682.2	6748.4	6769.6	6707.8	6678.1	6695.1	6694.4	6771.0	6787.2	6798.1
1971	6816.1	6894.2	6855.4	6943.4	7042.5	7108.2	7101.4	7191.5	7298.7	7254.1	7378.3	7411.6
1972	7951.9	7805.2	7831.9	7880.8	7847.9	7944.3	8217.8	8413.2	8695.0	8936.7	9117.3	9374.3
1973	9514.5	9718.0	9840.4	10088.5	10373.4	10594.2	10898.7	11190.6	11468.4	11616.2	11876.5	12151.3
1974	11792.1	11979.2	12059.9	12104.8	12213.5	12213.5	12213.5	12481.0	11622.3	11576.6	11775.3	12298.8
1975	12682.8	13029.7	13461.0	13741.4	13923.7	14211.2	14471.2	14794.7	14987.3	15036.5	15141.4	15154.1
1976	15174.1	14949.0	15151.8	15182.3	15060.5	15097.5	16333.8	15927.7	16055.4	17027.9	17192.2	17344.6
1977	17465.1	17756.4	17778.3	17682.3	17691.9	17786.3	17865.4	17918.8	17984.1	17836.1	17931.1	17814.2
1978	17581.7	17603.9	17868.5	18119.9	18092.7	18292.2	18443.6	18655.9	19108.2	19175.5	19188.9	19334.8

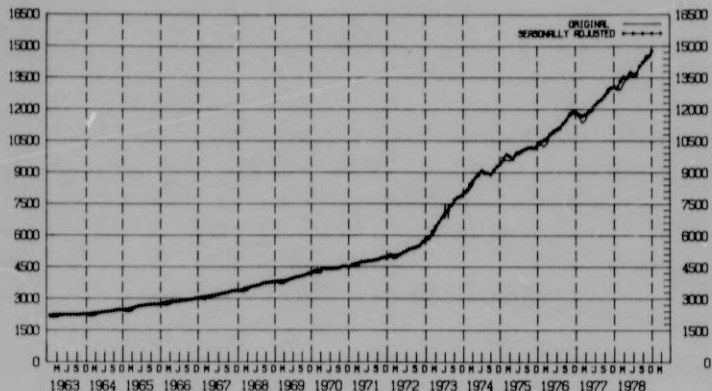
(a) Average of the figures relating to weekly balance days (Wednesdays) during the month. (b) Details prior to July 1973 include Papua New Guinea.

TABLE 21. MAJOR TRADING BANKS - LIQUID ASSETS AND AUSTRALIAN GOVERNMENT SECURITIES (a)
\$ million



(a) Average of the figures relating to weekly balance days (Wednesdays) during the month. (b) Details prior to July 1973 include Papua New Guinea.

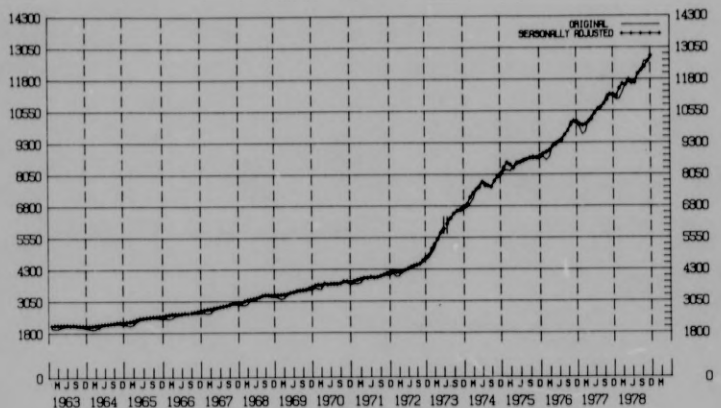
TABLE 22. MAJOR TRADING BANKS - LOANS, ADVANCES AND BILLS
DISCOUNTED - TOTAL (a)
\$ million



YEAR	JAN	FEB	MAR	APR	MAY	JUN	JUL	AUG	SEP	OCT	NOV	DEC
ORIGINAL												
1963	2049.2	2081.5	2096.2	2164.0	2182.5	2202.3	2216.6	2287.2	2175.7	2199.7	2288.8	2196.7
1964	2142.5	2137.4	2177.7	2276.1	2384.7	2332.2	2367.5	2394.9	2368.5	2412.2	2417.4	2385.9
1965	2361.2	2342.8	2374.9	2524.3	2594.1	2631.1	2674.8	2666.3	2681.8	2678.2	2678.8	2668.3
1966	2665.9	2642.7	2697.8	2792.1	2814.5	2844.6	2900.8	2866.2	2886.2	2915.2	2936.0	2923.3
1967	2934.0	2911.6	2961.9	3045.4	3136.7	3140.9	3246.3	3224.9	3224.5	3318.7	3312.3	3304.8
1968	3247.9	3287.4	3354.2	3524.2	3559.1	3597.7	3662.4	3675.6	3666.7	3716.8	3788.8	3717.6
1969	3687.1	3632.4	3676.9	3828.0	3981.1	3952.2	4026.8	3979.6	3965.6	4068.1	4095.5	4139.5
1970	4174.8	4153.9	4161.6	4388.2	4375.4	4400.9	4422.2	4368.2	4371.2	4472.1	4436.8	4382.5
1971	4465.8	4448.1	4503.2	4784.9	4728.3	4770.0	4745.7	4740.4	4735.7	4845.5	4844.4	4856.5
1972	4927.1	4831.9	4868.0	5057.5	5173.2	5257.0	5361.6	5313.4	5329.6	5462.3	5564.6	5785.6
1973	5767.1	5960.2	6208.7	6596.2	6893.9	7087.6	(b) 7211.6	7355.4	7596.7	7767.8	7756.2	7986.2
1974	7086.6	8144.3	8353.7	8763.7	9116.7	9495.2	8993.5	8878.9	8775.3	9103.3	9178.4	9271.7
1975	9504.2	9626.0	9488.4	9662.4	9913.0	9937.3	10045.9	10013.9	10266.7	10199.4	10072.1	10174.8
1976	10290.1	10168.7	10308.8	10794.7	10998.6	11016.5	11123.3	11231.1	11369.1	11791.1	11787.1	11740.5
1977	11576.8	11288.0	11625.3	11835.6	12015.1	12177.8	12364.1	11737.9	12524.8	12926.2	12963.8	12970.1
1978	12486.5	12868.7	13156.7	13663.1	13756.4	13626.2	13684.1	13961.6	14118.4	14516.2	14487.8	14482.7
SEASONALLY ADJUSTED												
1963	2130.4	2159.6	2161.2	2166.6	2186.4	2165.9	2159.3	2175.5	2189.1	2174.7	2190.0	2206.4
1964	2147.2	2216.8	2262.3	2293.4	2281.9	2294.8	2387.2	2326.3	2392.2	2386.9	2403.7	2398.6
1965	2411.0	2438.7	2465.1	2515.8	2587.9	2546.2	2608.1	2632.1	2645.8	2652.2	2665.3	2676.1
1966	2728.0	2741.8	2770.8	2778.2	2781.2	2786.3	2838.2	2833.3	2843.7	2889.7	2922.4	2906.1
1967	2988.2	3016.0	3038.4	3066.3	3093.7	3124.1	3167.6	3197.2	3224.9	3245.2	3304.4	3325.0
1968	3320.4	3394.1	3417.5	3477.4	3509.4	3538.0	3578.9	3646.6	3672.5	3692.0	3705.1	3739.7
1969	3739.1	3746.2	3763.4	3786.5	3845.8	3845.4	3938.8	3955.8	4001.6	4036.1	4100.8	4146.2
1970	4230.5	4269.5	4293.6	4355.1	4318.8	4324.2	4333.4	4350.5	4380.9	4448.0	4446.4	4425.3
1971	4616.0	4557.0	4597.3	4858.5	4846.9	4846.5	4892.0	4728.8	4765.1	4815.8	4865.8	4936.3
1972	4977.8	4951.2	4963.8	5088.7	5092.8	5166.3	(b) 5226.5	5307.8	5302.0	5438.0	5465.0	5475.4
1973	5820.5	6100.6	6326.3	6521.9	6743.5	6975.6	7097.9	7351.1	7594.5	7711.2	7770.5	7951.2
1974	8054.4	8339.4	8515.3	8679.7	8777.6	8974.0	8673.2	8809.9	8813.8	9018.1	9190.1	9328.1
1975	9476.6	9759.9	9671.8	9952.3	9766.9	9828.4	9975.9	10014.0	10190.1	10075.6	10061.5	10287.8
1976	10356.1	10432.1	10494.7	10708.5	10888.6	10888.6	10917.3	11012.4	11224.9	11392.8	11627.8	11793.7
1977	11650.4	11593.1	11662.4	11756.4	11854.4	12087.7	12251.9	12367.7	12548.6	12726.5	12914.6	12974.6
1978	12935.3	13227.6	13434.1	13380.0	13579.6	13534.4	13567.2	13952.7	14132.7	14278.6	14425.8	14480.2

(a) Average of the figures relating to weekly balance days (Wednesday) during the month. (b) Details prior to July 1973 include Papua New Guinea

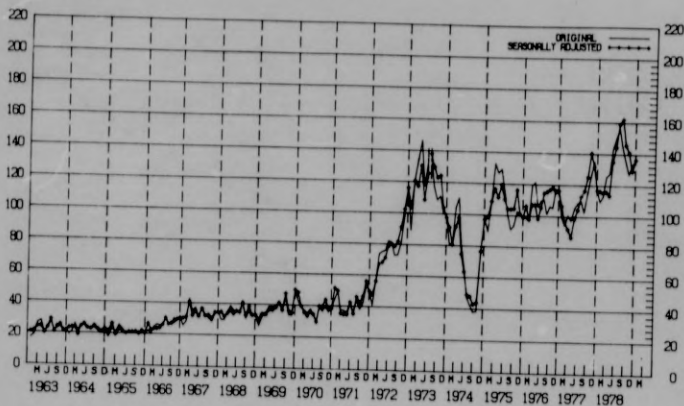
TABLE 23. MAJOR TRADING BANKS - LOANS, ADVANCES AND BILLS
DISCOUNTED - OTHER (a)
\$ million



YEAR	ORIGINAL											
	JAN	FEB	MAR	APR	MAY	JUN	JUL	AUG	SEP	OCT	NOV	DEC
1963	1974.7	1949.4	1951.5	2014.4	2047.2	2068.6	2095.3	2096.5	2094.2	2088.9	2007.4	1971.8
1964	1946.6	1916.7	1937.3	2020.2	2068.8	2047.9	2142.2	2157.4	2132.1	2153.3	2140.3	2108.9
1965	2099.8	2085.5	2111.1	2238.8	2316.4	2383.5	2393.5	2484.6	2377.4	2384.6	2370.8	2345.3
1966	2346.1	2324.9	2372.2	2462.9	2491.9	2513.5	257.7	2568.5	2541.1	2563.5	2557.9	2546.5
1967	2567.9	2535.0	2565.6	2783.0	2751.5	2792.2	2855.3	2864.9	2849.6	2913.1	2896.5	2888.7
1968	2855.0	2853.1	2904.0	3047.9	3108.2	3142.4	3214.6	3256.0	3226.7	3237.5	3187.4	3175.4
1969	3152.3	3088.6	3118.7	3262.1	3342.2	3372.8	3462.7	3444.9	3434.8	3445.6	3446.6	3465.4
1970	3526.8	3479.1	3473.9	3641.1	3674.7	3702.9	3737.4	3698.8	3674.0	3764.3	3716.6	3694.3
1971	3702.7	3676.0	3723.5	3927.2	3932.8	3974.5	3982.7	3956.1	3947.8	4027.6	4023.3	4028.5
1972	4080.4	3975.3	3987.3	4184.9	4244.5	4306.1	4487.7	4394.6	4303.4	4455.3	4512.6	4405.2
1973	4657.5	4860.3	5058.6	5466.5	5734.7	5686.4	(b) 6120.3	6278.8	6487.8	6576.9	6512.6	6508.0
1974	6694.2	6887.1	7082.4	7444.5	7574.3	7747.3	7855.8	7564.3	7470.6	7745.1	7841.9	7924.4
1975	8134.7	8165.7	8127.0	8285.8	8514.6	8588.9	8614.4	8597.6	8619.2	8737.8	8579.0	8616.2
1976	8690.4	8554.0	8664.4	9148.5	9268.8	9314.0	9429.1	9558.0	9695.7	10064.9	10021.3	9971.8
1977	9851.2	9562.1	9673.0	10185.4	10272.7	10426.6	10616.1	10633.1	10794.7	11122.4	11086.3	11044.9
1978	10936.6	10958.3	11223.3	11551.2	11784.9	11632.2	11687.6	11964.9	12085.1	12468.4	12398.7	12561.4
YEAR	SEASONALLY ADJUSTED											
	JAN	FEB	MAR	APR	MAY	JUN	JUL	AUG	SEP	OCT	NOV	DEC
1963	2021.9	2034.0	2033.5	2079.8	2079.4	2036.9	2015.4	2029.1	2011.1	2026.4	2005.4	1988.5
1964	1949.9	2023.0	2016.4	2024.8	2044.1	2061.2	2071.2	2098.2	2101.3	2126.5	2140.6	2137.9
1965	2148.7	2160.4	2194.1	2241.3	2248.6	2300.6	2316.1	2333.7	2347.5	2355.9	2373.0	2380.3
1966	2419.9	2431.1	2462.2	2459.6	2459.8	2467.4	2498.7	2498.0	2514.1	2534.3	2559.1	2598.0
1967	2622.0	2647.5	2658.1	2694.1	2713.4	2742.7	2767.8	2793.0	2824.7	2879.1	2906.7	2921.5
1968	2910.1	2972.9	3010.7	3031.9	3064.8	3086.8	3123.6	3183.9	3208.8	3205.4	3208.4	3224.6
1969	3207.8	3209.9	3223.1	3233.4	3292.5	3312.3	3344.7	3364.7	3400.8	3415.1	3466.9	3514.7
1970	3580.1	3605.5	3584.4	3659.0	3614.9	3616.1	3635.8	3637.7	3665.3	3738.2	3739.4	3718.0
1971	3786.4	3799.9	3835.0	3882.4	3865.7	3903.6	3879.1	3903.3	3906.6	3956.6	4052.4	4083.4
1972	4145.2	4100.3	4099.0	4115.2	4172.6	4233.5	4301.2	4345.3	4378.9	4418.8	4448.0	4475.9
1973	4753.3	5006.6	5192.9	5302.8	5325.8	5387.4	(b) 5488.7	5612.3	5462.4	5511.5	5564.3	5606.6
1974	6749.7	7051.5	7223.2	7368.2	7445.4	7657.4	7517.7	7507.4	7499.1	7684.4	7889.2	7988.4
1975	8210.1	8415.3	8332.4	8208.5	8372.8	8416.0	8474.7	8545.8	8602.6	8599.1	8611.1	8682.9
1976	8763.5	8827.0	8905.3	9058.2	9126.4	9235.1	9324.4	9388.4	9671.2	9878.4	10041.1	10026.4
1977	9428.8	9877.3	9518.2	10026.6	10124.1	10344.8	10452.8	10580.0	10725.5	10889.6	11036.4	11046.3
1978	10814.9	11327.2	11811.3	11647.8	11622.6	11947.0	11559.9	11929.9	12049.2	12183.5	12402.9	12605.9

(a) Average of the figures relating to weekly balance days (Wednesdays) during the month. (b) Details prior to July 1973 include Papua New Guinea.

TABLE 24. MAJOR TRADING BANKS - NEW AND INCREASED LENDING COMMITMENTS (a)
(SOURCE OF ORIGINAL DATA - RESERVE BANK OF AUSTRALIA)
\$ million

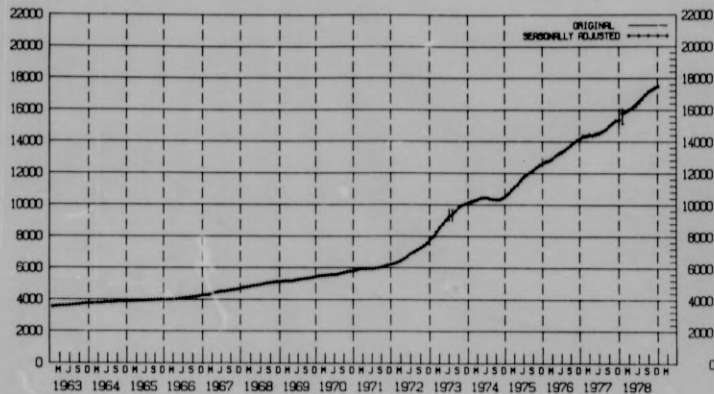


YEAR	JAN	FEB	MAR	APR	MAY	JUN	JUL	AUG	SEP	OCT	NOV	DEC
ORIGINAL												
1963	16.4	15.6	24.3	27.4	28.0	22.6	27.3	21.6	22.6	24.0	20.9	21.7
1964	18.9	20.8	25.8	21.5	24.8	24.9	22.3	23.3	23.3	21.3	24.8	22.8
1965	17.6	23.2	28.4	25.4	22.7	19.5	28.4	21.5	26.2	19.1	21.1	20.4
1966	22.1	20.3	24.6	26.1	29.5	25.3	18.1	26.8	25.8	27.4	29.0	30.5
1967	25.7	24.4	42.6	35.2	37.1	31.1	34.9	32.6	38.7	28.4	33.5	34.5
1968	29.7	29.7	34.8	34.5	35.4	34.9	35.5	41.8	30.7	34.6	31.9	33.1
1969	26.2	32.3	34.7	38.8	38.5	38.1	42.0	36.4	44.6	35.5	33.4	40.0
1970	42.5	34.6	36.8	35.1	37.6	34.6	35.3	38.8	36.5	39.9	36.1	38.4
1971	44.2	44.2	37.4	37.0	36.0	42.0	39.6	43.8	38.1	41.8	37.7	50.2
1972	40.8	56.4	73.5	75.0	75.8	82.0	80.4	72.9	71.1	85.6	97.3	117.8
1973	89.1	121.6	134.2	146.1	117.1	132.2	(b)137.1	116.5	104.7	111.1	105.2	98.7
1974	80.8	80.6	103.0	118.0	82.3	66.4	47.3	42.3	37.8	38.4	35.8	47.3
1975	89.2	108.0	132.4	126.7	124.0	115.2	108.4	92.8	93.3	102.3	101.1	99.8
1976	96.5	96.5	119.4	121.0	105.7	109.8	110.7	131.2	106.0	105.2	117.2	116.0
1977	105.0	94.1	100.5	97.3	104.8	108.3	109.5	102.7	115.0	125.4	134.8	116.7
1978	105.6	112.8	125.4	127.1	143.2	149.8	156.1	144.8	135.3	127.1	132.7	135.4
SEASONALLY ADJUSTED												
1963	25.4	20.8	23.5	23.7	19.9	22.9	24.1	28.3	23.6	24.9	21.2	21.7
1964	22.0	24.3	23.1	18.5	23.8	25.3	22.8	22.2	24.1	22.1	20.5	22.4
1965	21.0	25.7	18.0	22.2	21.3	19.4	26.6	20.6	20.8	19.4	21.5	20.1
1966	24.0	22.3	22.9	23.8	23.6	25.6	26.6	26.8	26.8	26.8	29.3	28.1
1967	29.9	30.7	40.4	31.6	34.4	31.2	36.1	31.7	32.0	31.7	33.9	34.0
1968	34.2	31.3	33.4	35.2	33.2	34.9	34.3	40.3	32.2	37.8	32.6	32.4
1969	29.9	33.3	32.8	36.2	36.0	37.7	40.6	36.8	44.6	35.6	34.4	40.1
1970	47.4	38.8	34.9	32.6	35.4	33.4	34.5	40.1	41.8	45.9	37.5	37.6
1971	50.5	48.9	34.6	34.8	33.0	41.5	34.5	40.1	41.8	45.9	36.1	44.0
1972	47.0	55.4	68.3	67.6	78.5	78.0	75.6	74.8	81.0	98.1	101.4	115.3
1973	102.9	119.9	116.5	129.4	107.8	124.7	(b)137.1	128.1	122.2	123.4	103.0	98.8
1974	96.4	79.7	98.9	98.8	73.9	62.8	44.2	47.1	42.2	43.3	35.9	46.4
1975	97.9	107.0	115.8	110.6	110.7	110.7	109.4	131.3	103.2	103.6	115.4	100.5
1976	105.4	97.0	106.4	106.4	97.5	104.6	11.8	114.8	110.1	117.6	114.8	115.6
1977	104.8	94.8	91.2	85.9	97.8	103.4	111.0	115.7	124.4	134.7	131.3	116.2
1978	115.6	114.7	115.2	112.9	134.3	143.6	158.3	161.4	149.0	140.3	128.6	135.8

(a) Weekly average for the period ended second Wednesday in the month. (b) Details prior to July 1973 include Papua New Guinea.

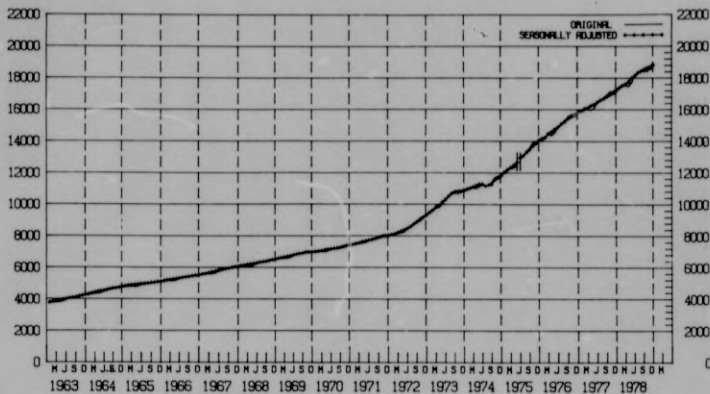
NOTE: This series is subject to large irregular fluctuations and particular care should be exercised in interpreting individual month-to-month movements.

TABLE 25. MAJOR TRADING BANKS - OVERDRAFT LIMITS (a)
(SOURCE OF ORIGINAL DATA - RESERVE BANK OF AUSTRALIA)
\$ million



YEAR	JAN	FEB	MAR	APR	MAY	JUN	JUL	AUG	SEP	OCT	NOV	DEC
ORIGINAL												
1963	3529.4	3538.5	3566.5	3587.1	3595.9	3624.4	3662.7	3667.4	3690.5	3722.4	3747.3	3762.0
1964	3727.0	3737.8	3756.5	3764.5	3793.3	3814.7	3821.0	3824.8	3846.2	3872.8	3874.2	3887.0
1965	3951.3	3967.8	3980.0	3981.4	3915.8	3977.3	3932.2	3941.0	3956.6	3978.2	3987.7	3995.3
1966	3960.8	3959.0	3963.4	3996.4	4028.2	4026.0	4098.4	4122.0	4155.4	4181.7	4223.0	4264.6
1967	4256.0	4262.7	4335.8	4483.8	4458.0	4501.0	4512.9	4550.5	4584.1	4626.8	4638.2	4693.5
1968	4725.9	4741.9	4789.0	4854.8	4892.4	4939.8	4983.0	5033.2	5089.1	5072.1	5105.2	5111.7
1969	5112.4	5124.3	5125.2	5161.7	5218.6	5257.4	5295.2	5317.5	5328.4	5351.2	5371.5	5435.6
1970	5456.4	5468.8	5485.4	5527.3	5573.1	5575.7	5595.8	5657.4	5678.9	5725.5	5791.8	5772.7
1971	5823.1	5887.3	5905.4	5960.7	5955.2	5963.4	5986.1	6020.1	6026.7	6063.4	6132.6	6191.4
1972	6221.8	6288.1	6379.4	6584.0	6716.0	6910.6	7023.9	7128.7	7288.8	7333.8	7492.3	7760.3
1973	7896.8	8180.6	8258.7	8787.1	9065.1	9330.3	(b)9427.3	9618.5	9788.5	9914.5	9982.0	10284.7
1974	10125.0	10195.1	10258.7	10463.5	10525.6	10527.2	10439.4	10345.0	10289.1	10276.0	10339.1	10498.4
1975	10523.1	10856.4	11968.6	11317.3	11628.4	11834.0	11964.4	12043.6	12120.5	12297.5	12417.7	12581.4
1976	12646.2	12712.8	12782.4	13181.9	13312.1	13412.3	13523.3	13596.2	13686.3	13871.4	14009.7	14193.3
1977	14252.3	14262.9	14331.3	14431.2	14545.5	14604.0	14703.3	14781.5	14912.9	15100.2	15259.4	15399.9
1978	(c)15680.0	15806.7	15908.2	16197.0	16285.1	16594.7	16793.2	16936.7	17082.2	17214.4	17313.6	17462.8
SEASONALLY ADJUSTED												
1963	3546.4	3558.7	3582.1	3592.7	3596.2	3618.5	3660.7	3663.3	3681.2	3709.5	3729.0	3745.1
1964	3749.3	3762.7	3778.3	3771.1	3793.1	3807.1	3797.4	3826.2	3836.3	3860.1	3858.8	3854.9
1965	3875.5	3894.4	3908.2	3908.4	3914.9	3917.7	3926.6	3935.1	3946.5	3967.1	3972.2	3979.8
1966	3981.7	3986.1	3991.6	4003.7	4025.8	4055.3	4090.2	4111.9	4145.5	4172.8	4211.5	4255.0
1967	4274.8	4291.4	4381.1	4488.9	4453.7	4492.2	4521.4	4538.7	4574.7	4602.0	4631.4	4683.2
1968	4743.5	4773.4	4816.1	4858.4	4882.4	4923.6	4968.3	5017.4	5082.8	5070.2	5106.3	5105.5
1969	5130.3	5158.3	5153.4	5159.8	5203.0	5237.3	5274.2	5297.8	5324.1	5354.9	5378.4	5434.7
1970	5478.2	5501.1	5514.6	5528.2	5549.6	5547.8	5567.5	5635.4	5627.9	5735.8	5768.2	5778.0
1971	5851.9	5928.9	5938.1	5921.7	5925.0	5923.6	5947.0	5978.6	6029.6	6081.2	6159.0	6208.0
1972	6268.8	6323.6	6415.6	6554.2	6686.8	6851.1	6974.1	7158.3	7237.0	7361.4	7533.4	7702.1
1973	7952.1	8246.8	8527.2	8736.2	8966.5	9244.8	(b)9355.8	9583.0	9867.9	9957.2	10042.7	10119.1
1974	10288.4	10268.4	10321.9	10398.5	10425.6	10415.1	10360.1	10326.2	10316.7	10317.9	10348.6	10592.3
1975	10890.7	10938.8	11117.2	11267.7	11513.7	11716.4	11883.8	12031.9	12158.1	12346.2	12486.0	12610.2
1976	12738.2	12793.2	12899.7	13069.2	13183.2	13283.6	13433.8	13593.3	13761.2	13912.9	14072.8	14174.4
1977	14339.6	14346.7	14419.9	14537.7	14610.5	14678.8	14611.2	14749.1	14968.2	15111.1	15326.0	15376.9
1978	(c)15776.9	15986.8	15998.8	16118.7	16237.3	16466.1	16690.6	16939.7	17136.0	17259.3	17363.7	17474.2

(a) As at the second Wednesday in the month. (b) Details prior to July 1973 include Papua New Guinea. (c) Break in continuity due to change in accounting procedures.

TABLE 26. SAVINGS BANKS - DEPOSITORS' BALANCES (a)
\$ million

YEAR	ORIGINAL											
	JAN	FEB	MAR	APR	MAY	JUN	JUL	AUG	SEP	OCT	NOV	DEC
1963	3727.4	3764.6	3775.4	3791.1	3846.4	3919.7	4009.6	4048.6	4085.5	4159.4	4192.3	4225.8
1964	4260.0	4302.5	4320.0	4346.8	4374.3	4476.2	4515.4	4597.3	4644.7	4683.3	4744.5	4734.2
1965	4749.1	4782.6	4781.7	4757.8	4785.8	4886.6	4922.4	4967.9	4994.2	5034.4	5065.0	5086.1
1966	5044.9	5141.8	5117.6	5102.1	5160.5	5253.7	5307.7	5356.4	5391.4	5448.5	5474.4	5471.4
1967	5411.7	5544.4	5561.3	5558.2	5622.7	5704.7	5820.7	5840.2	5902.2	6001.2	6038.5	6021.4
1968	6046.1	6071.1	6067.6	6043.4	6111.9	6221.9	6280.0	6349.1	6385.1	6442.4	6484.0	6456.3
1969	6497.0	6584.5	6524.5	6537.8	6582.6	6707.1	6790.9	6849.6	6908.3	6977.6	6976.4	6943.1
1970	6934.7	6948.4	6955.2	6944.2	6991.8	7184.7	7148.4	7204.5	7246.2	7333.0	7377.5	7342.8
1971	7358.4	7418.9	7427.3	7444.3	7504.5	7634.5	7738.0	7814.0	7899.8	7986.1	8058.8	7921.2
1972	7987.8	8055.7	8092.3	8126.6	8192.4	8391.4	8548.5	8718.7	8882.4	9042.9	9192.8	9261.8
1973	9417.3	9569.0	9700.3	9756.7	9935.3	10237.9	10435.1	10656.7	10803.9	10917.8	10951.6	10941.3
1974	10944.3	10995.2	10991.7	10963.8	11074.2	11195.6	11074.7	11193.7	11304.3	11445.9	11739.7	11415.9
1975	12012.2	12183.6	12218.1	12258.6	12486.8	12668.5	13024.4	13276.3	13519.9	13822.0	13882.5	14083.9
1976	14121.8	14228.3	14354.9	14294.0	14467.4	14822.5	14995.8	15201.1	15501.0	15629.1	15738.8	15833.8
1977	15845.1	16093.3	15964.5	15913.5	16016.9	16385.3	16584.6	16666.6	16776.0	17082.0	17103.2	17247.9
1978	17379.6	17543.1	17452.7	17408.7	17649.7	18046.3	18221.8	18381.4	18537.0	18635.5	18677.2	18664.5
YEAR	SEASONALLY ADJUSTED											
	JAN	FEB	MAR	APR	MAY	JUN	JUL	AUG	SEP	OCT	NOV	DEC
1963	3731.1	3768.3	3809.4	3854.7	3901.8	3946.7	3998.0	4021.1	4094.8	4188.7	4196.1	4212.4
1964	4272.9	4310.8	4357.5	4413.9	4467.1	4478.1	4521.0	4567.4	4605.1	4634.8	4664.8	4715.5
1965	4752.6	4789.5	4815.6	4839.8	4861.8	4885.9	4908.1	4929.6	4997.8	4983.8	5015.8	5054.7
1966	5088.8	5142.1	5168.4	5198.1	5215.7	5244.2	5286.2	5322.1	5391.3	5386.1	5427.1	5460.6
1967	5518.0	5552.7	5608.2	5647.0	5703.9	5759.8	5805.3	5852.3	5898.8	5937.1	5976.4	6003.8
1968	6054.8	6082.0	6116.5	6147.2	6198.9	6277.4	6254.2	6300.0	6335.9	6369.7	6418.4	6445.4
1969	6511.9	6553.5	6587.6	6631.2	6674.8	6717.2	6768.6	6816.5	6864.9	6895.2	6918.7	6932.0
1970	6443.8	6487.8	6484.8	6458.3	6558.3	6688.8	6718.0	6748.5	6793.7	6844.8	6894.0	6824.8
1971	7378.5	7439.0	7484.9	7558.0	7684.4	7852.6	7782.8	7765.5	7834.4	7887.9	7925.3	7972.0
1972	8077.0	8063.0	8149.8	8231.2	8308.1	8412.2	8532.6	8675.7	8806.8	8943.3	9113.4	9250.1
1973	9421.3	9569.9	9746.8	9802.7	10078.5	10294.1	10452.5	10625.3	10782.4	10891.7	10784.3	10588.0
1974	10899.5	10966.8	11094.5	11131.5	11224.6	11221.4	11117.4	11147.8	11221.3	11511.8	11639.3	11784.4
1975	11979.9	12149.2	12287.5	12405.7	12545.7	12594.9	12600.2	13043.2	13251.7	13482.0	13649.3	13789.0
1976	14081.2	14149.6	14422.1	14525.1	14695.2	14841.8	15033.9	15184.2	15301.6	15465.9	15564.9	15735.0
1977	15885.9	15965.6	16054.4	16188.0	16263.5	16418.9	16539.4	16639.6	16703.5	16882.1	16983.5	17140.3
1978	17324.7	17451.8	17358.5	17388.8	17621.0	18021.0	18262.0	18368.5	18395.2	18417.3	18543.1	18746.5

(a) All savings deposits at (or near) end of month - see explanatory notes. Excludes External Territories. (b) An abrupt change in the level of the series from June 1975 was caused by a change in accounting procedures by one bank.

APPENDIX A

DETAILS OF SEASONAL ADJUSTMENT METHODS USED AND MEASURES OF VARIABILITY

The seasonally adjusted statistics shown in this bulletin have been calculated by means of the X-11 variant of the U.S. Census Bureau Method II Seasonal Adjustment Program, a general description of which is provided in *Seasonally Adjusted Indicators* (1308.0).

As the results of seasonal adjustment and their interpretation depend on the particular method of adjustment employed, the more important program options employed in calculating the seasonally adjusted figures included in this bulletin are given in Table A below.

To assist in interpreting movements shown by particular series included in this bulletin, selected measures of variability of the original, seasonally adjusted and various component series computed in the course of seasonal adjustment are shown in Table B below.

Comparative details for other seasonally adjusted series are shown in Appendices C and D of *Seasonally Adjusted Indicators* (1308.0).

TABLE A - PROGRAM OPTIONS USED

Series	Moving average used		Limits for graduated treatment of extremes	Trading day variation	Adjustment made for:		
	Trend	Seasonal factors			Easter	Australia Day	Other influences
Major Trading Banks :							
Total Deposits (a)	9-term	3x5-term*	1.5 & 2.5*	no	no	no	yes (a) (b) (c)
Liquid Assets and Australian Government securities	9-term	3x5-term*	1.5 & 2.5*	no	no	no	yes (b)
Loans, advances and bills discounted - total	9-term	3x5-term*	1.5 & 2.5*	no	no	no	yes (b)
Loans, advances and bills discounted - other	9-term	3x5-term*	1.5 & 2.5*	no	no	no	yes (b)
New and increased lending commitments (d)	13-term	3x5-term*	1.5 & 2.5*	no	no	no	yes (b)(d)
Overdraft limits outstanding	7-term	3x5-term*	1.5 & 2.5*	no	no	no	yes (b)(f)
Savings Banks :							
Depositors' balances	9-term	3x5-term*	1.5 & 2.5*	no	no	no	yes (e)(g)

(a) Series adjusted as the sum of the components: *Current deposits* and *Fixed deposits*, including *certificates of deposits* (options described refer to both series). (b) Abrupt changes in level of the series from July 1973 due to the exclusion of Papua New Guinea. (c) An abrupt change occurred in the seasonal pattern of *fixed deposits* from March 1971. Variations in *current deposits* due to the general business practice of monthly settlement of accounts at or near the end of the month, the perceptible effects of which vary according to the proximity of the banks' weekly balancing days (Wednesdays) to the end of the month. (d) Series adjusted as the sum of the components: *Term loan approval* (not adjusted, original series used) and *Aggregate approvals less term-loan approvals* (options described refer to the latter series). (e) Effects of payments of family allowances and war pension paid directly into savings bank accounts. (f) An abrupt change in the series from January 1978 was caused by a change in accounting procedures. (g) An abrupt change in the level of the series from June 1975 was caused by a change in accounting procedures by one bank. * Standard program procedures.

NOTE. Multiplicative adjustment used for all these series.

TABLE B - MEASURES OF VARIABILITY

Series	Average percentage change without regard for sign:						
	From month to month in					From year to year in the seasonal factors	Months for Cyclical Dominance
	Original series	Seasonally adjusted series	Trend series	Irregular series	Seasonal factors		
Major Trading Banks :							
Total Deposits	1.59	0.99	0.85	0.48	1.55	0.08	1
Liquid assets and Australian Government securities	5.42	2.41	1.78	1.49	4.66	0.31	1
Loans, advances and bills discounted - total	1.46	1.09	0.99	0.42	1.03	0.10	1
Loans, advances and bills discounted - other	1.62	1.11	0.97	0.46	1.21	0.12	1
New and increased lending commitments	10.86	8.23	2.85	7.02	6.97	0.98	3
Overdraft limits outstanding	0.89	0.85	0.84	0.19	0.26	0.05	1
Savings Banks :							
Depositors' balances	0.91	0.82	0.82	0.14	0.48	0.03	1