

N46/653



The  
**Adelaide Steamship Co.**  
Limited.

Pleasant  
Sea Trips

In - -  
South Australian  
Waters.

# PROBABLY YOU WANT A CHANGE OF AIR AND SCENE

and cannot spare the time for a lengthy holiday—if so, why not take a sea trip either “The Gulf Trips,” “West Coast Trip,” to Port Lincoln only, to Kangaroo Island or Edithburgh?

As regards The Gulf Trips and Port Lincoln the following will interest you:—

The S.S. “PARINGA” leaves every Tuesday at 4 p.m., arriving again at Port Adelaide on Sunday morning or

S.S. “MORIALTA” leaves every Saturday about 2 p.m. arriving again at Port Adelaide on Thursdays.

By either steamer you can arrange your holiday according to the time at your disposal.

1. By taking the Round Trip.

2. By booking for Port Lincoln only, with a stay there until “Paringa” calls again en route for Adelaide on Saturday. Or if time presses and a sea trip only is required it is possible to leave Adelaide per “Paringa” on Tuesday, arrive at Lincoln Wednesday a.m., and leave again (circumstances permitting) for Adelaide per “Morialta” the same night.

This means you are only away from business one day (Wednesday) which you spend at Port Lincoln, and have a splendid Sea Trip.

Or Several Other Trips are Open to choice. (See next pages)

**FARES INCLUDE EVERYTHING EXCEPT WINES  
AND SPIRITS, &c.**

The service is maintained by the New Steamers “Morialta” (1,348 tons) and “Paringa” (1,310 tons) vessels of the most modern type, and fitted with all the latest improvements, luxuriously appointed Hot and Cold Sea Water Baths, Electric Light and Cooling Fans Dining Saloon on Deck, Smoking-room, &c., &c.

All information, dates, and fares subject to alteration and revision without notice.

**ALL RETURN TICKETS, EXCEPTING TO KANGAROO  
ISLAND AND EDITHBURGH, AVAILABLE FOR SIX  
MONTHS FROM DATE OF EMBARKATION.**



# THE GULF TRIP.

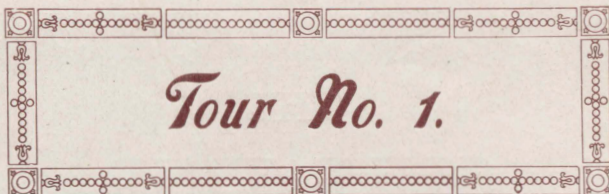
---

It is curious how comparatively few persons appreciate the beauties of the country in which they reside, and in the matter of holiday attractions always deem it necessary to go far afield.

In South Australia, for instance, one often hears the beauty of Tasmania, or New South Wales rivers extolled, yet how few of those who talk in this strain know anything of the attractions of that fine waterway, Spencer's Gulf. What better holiday, it may well be asked, can be wanted than what is known as "The Gulf Trip," which the Adelaide Steamship Company is doing so much to popularise. In the splendid up-to-date steamers now available, such as the "Morialta" and "Paringa," passengers may make the trip in luxurious fashion. The menu provided is equal to that of the mail steamers or best hotels, the accommodation excellent, and the stoppage at the various ports en route precludes any possibility of the trip becoming monotonous. The fact of comparatively smooth water strongly appeals to those who suffer from mal-de-mer and do not care for a voyage on the open seas.

Many hundreds have taken the trip with pleasure and profit; not only city residents, but also northern folk, who from Port Augusta, Port Pirie, &c., are able to journey south with a degree of comfort and pleasure quite impossible on a long railway journey.

Briefly, "The Gulf Trip" may be summed up as health-giving, pleasurable, and educational, and a unique opportunity for the man of business or country pursuits who is feeling run down from over-attention to his business, to recuperate in a pleasurable manner.



# Tour No. 1.

5 Days Excursion. (Round Sea Trip.)

Leave Port Adelaide on Saturday, return on following Thursday.

## 4 p.m. PROGRAMME.

- noon*
- 4 p.m.* **Saturday** Leave Port Adelaide per s.s. "~~Mori~~ *Aillinea* ~~atta~~" for Kingscote, Lincoln, Augusta, and Port Pirie.  
*Janninika* Arrive Kingscote p.m.  
Leave Kingscote
- Sunday** Arrive Port Lincoln.  
Leave Port Lincoln.
- Monday** Arrive Port Augusta a.m.  
Leave Port Augusta p.m.
- Tuesday** Arrive Port Pirie a.m.  
Leave Port Pirie p.m.
- Wednesday** Arrive Port Lincoln a.m.  
Leave Port Lincoln p.m.
- Thursday** Leave Kingscote 7 a.m. (about).  
Arrive Port Adelaide about 2 p.m.



This trip enables passengers to see Port Lincoln, the smelters and shipping at Port Pirie, the overland railway works at Port Augusta, with time for drives into the country, or to the Ostrich Farm.



# Tour No. 2.

5 Days Excursion.

(Round Sea Trip.)

Leave Port Adelaide Tuesday, return on following Sunday a.m.

## PROGRAMME.

- Tuesday** 4 p.m. Leave Port Adelaide per s.s. "Paringa" for Cowell via Port Lincoln, Tumby, Arno, and Wallaroo.
- Wednesday** Arrive Port Lincoln a.m.  
Leave about noon.  
Arrive Tumby Bay about 3 p.m.  
Leave Tumby Bay 6 p.m.  
Arrive and leave Arno Bay p.m.
- Thursday** Arrive Wallaroo about 7 a.m.  
Leave Wallaroo noon.  
Arrive Cowell before dark.
- Friday** Leave Cowell daylight  
Arrive Wallaroo a.m.  
Leave Wallaroo about 5 p.m.  
Arrive Arno Bay p.m.
- Saturday** Arrive Tumby Bay a.m.  
Arrive Port Lincoln about 1 p.m.  
Leave Port Lincoln about 6 p.m.  
Arrive Port Adelaide about 9 a.m.
- Sunday**

*Also s/s Monialta every Thursday  
to same pts. returning Arr. Wed.*

On this trip tourists are enabled to see a number of prominent gulf ports, and inspect the large smelters of the Wallaroo and Moonta Company at Wallaroo.



## Tour No. 3.

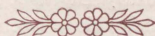
PORT LINCOLN

2 days at sea and one day at Port Lincoln.

Leave Port Adelaide Tuesday p.m.; return Thursday a.m.

### PROGRAMME.

- Tuesday** 4 p.m. Leave Port Adelaide per s.s. "Paringa."
- Wednesday** Arrive Port Lincoln a.m., spend day ashore, and leave again the same evening about 6 p.m. per s.s. "~~Morialta~~ *Allinga*" for Port Adelaide, via Kingscote.
- Thursday** Arrive Port Adelaide about 2 p.m.



## Tour No. 4.

PORT LINCOLN

2 days at sea, 4 days at Port Lincoln.

Leave Port Adelaide Tuesday p.m. return Sunday a.m.

### PROGRAMME.

- Tuesday** 4 p.m. Leave Port Adelaide per s.s. "Paringa."
- Wednesday** Arrive Port Lincoln a.m.
- Thursday and Friday** Spend time ashore, motor drives, fishing, sea bathing, etc., etc.
- Saturday** Leave Port Lincoln 6 p.m. for Adelaide.
- Sunday** Arrive Port Adelaide about 9 a.m.

**Tour No. 5.**  
PORT LINCOLN.

2 days at sea and 4 days at Port Lincoln.

Leave Port Adelaide Saturday, return Thursday morning.

- Saturday** <sup>noon</sup> 2 p.m. Leave Port Adelaide per s.s. "*Mori-Allinga*" calling at Kingscote.
- Sunday** Arrive Port Lincoln about 10 a.m.
- Monday** Spend ashore at Port Lincoln motoring,
- Tuesday &** fishing, sea bathing, etc., etc. Leave
- Wednesday** about 6 p.m. per "*Morialta*," via Kingscote
- Thursday** Arrive Port Adelaide about 2 p.m.

**KANGAROO ISLAND SERVICE.**

Steamers leave Port Adelaide every Wednesday and Saturday.

Steamers leave Kingscote every Monday and Thursday mornings.

**Tour No. 6.**

**KANGAROO ISLAND.**

Leave Port Adelaide Saturday p.m., return Thursday p.m.

- Saturday** <sup>noon</sup> 2 p.m. Leave Port Adelaide per s.s. "*Mori-Allinga*" arrive Kingscote about 9 p.m.
- Sunday**
- Monday** } Spend ashore sight-seeing, driving, motor-
- Tuesday &** } ing, sea bathing, etc.
- Wednesday**
- Thursday** Leave Kingscote about 7 a.m.  
Arrive Port Adelaide about 2 p.m.

Or arrive as above on Saturday night, and leave on Monday morning per "*Rupara*," arriving at Port Adelaide on Monday afternoon.



# Tour No. 7.

WEEK-END TRIP TO KANGAROO ISLAND

(Special fares.)

Leave Port Adelaide Saturday return Monday.

**Saturday** <sup>noon</sup> Leave Port Adelaide per s.s. "~~Mori-~~  
*Alinga*" arrive Kingscote 9 p.m.

**Sunday** Spend ashore sight-seeing, drives, etc.

**Monday** Leave per "Rupara" 7 a.m., and arrive Port Adelaide about 5 p.m.

Or leave Port Adelaide on Wednesday morning per "Rupara" and return per same steamer on Monday.

# Tour No. 8.

WEST COAST TRIP.

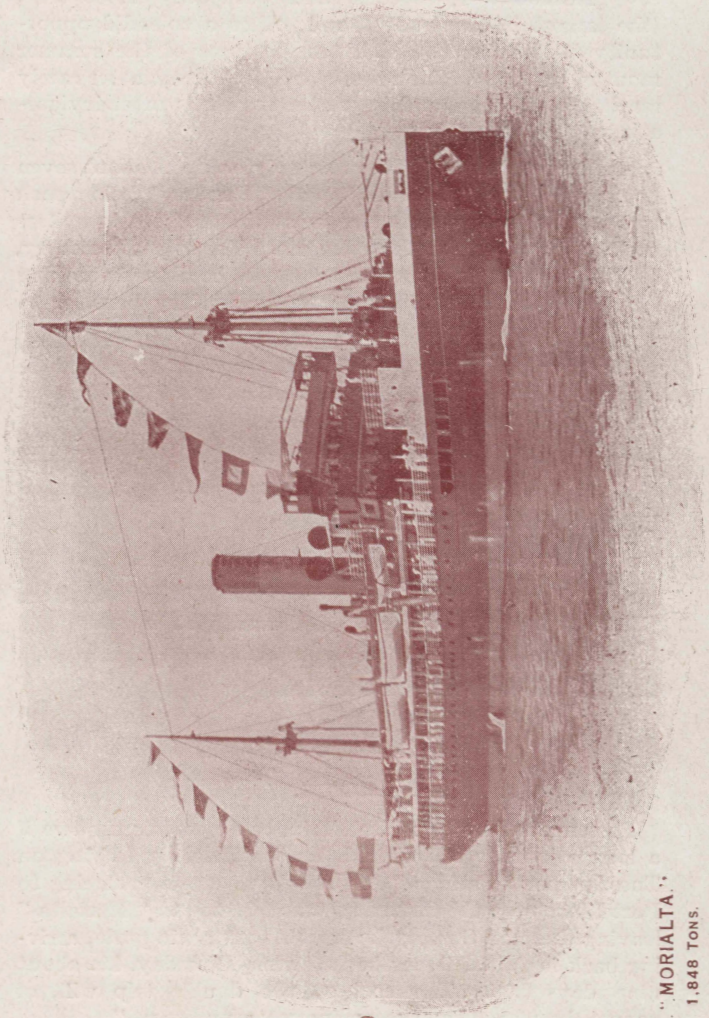
per s.s. "Rupara."

L. Adelaide	9 a.m.	Wednesday
L. Edithburgh	p.m.	Wednesday
A. Kingscote	p.m.	Wednesday
A. Streaky Bay	midnight	Thursday
Murat and Denial Bays	a.m.	Friday
Fowlers Bay	p.m.	Friday
Denial Bay	a.m.	Saturday
Streaky	p.m.	Saturday
L. Kingscote	a.m.	Monday
A. Edithburgh	a.m.	Monday
L. Edithburgh	noon	Monday
A. Adelaide	p.m.	Monday

Point Sinclair and other ports as required (weather permitting).

SPECIAL NOTICE REFERRING TO ALL TRIPS.

The dates throughout the various services will be adhered to as closely as possible, but should circumstances necessitate any alteration, the Company may despatch steamers in advance of or later than the dates given, or withdraw any steamer altogether, and is not responsible for any loss or inconvenience occasioned thereby.



SS. "MORIALTA."  
1,848 TONS.

## KANGAROO ISLAND.

This service is maintained by the splendid modern steamers "~~Morialta~~ <sup>Adelina 2742</sup>" 1,548 tons, and "Rupara" 1,368 tons, (the largest in the trade), and offers a splendid opportunity of escaping the high temperatures of the summer months, during which on the Island the thermometer rarely reaches 90 degrees, and in winter the air is most invigorating.

As the run down to Kingscote only occupies about seven hours, and the "~~Morialta~~ <sup>Adelina</sup>" and "Rupara" being such large and steady vessels, the most timid of sea travellers need have no fear of making the trip. The splendid scenery, fishing, bathing facilities, shooting, etc., combine in making it a most desirable trip for those on holiday bent, or to those desirous of recuperating their health.

The previous pages show in detail the way the trip can be made. Return tickets available for 3 months. Special week-end fares.

## EDITHBURGH.

Regular service twice a week between Port Adelaide and Edithburgh and vice versa.

s.s. "Rupara" every Wednesday about 9 a.m.

s.s. "Ferret" every Saturday about 9 a.m. and from Edithburgh every Monday, and Thursday about noon.

This service affords a splendid short sea trip. Return tickets available for three months.



## NOTE.

Passengers taking one Gulf Trip, can complete the two if a longer journey is required, for instance, by leaving on Tuesday per "Paringa" for Cowell via ports returning to Port Lincoln on the Saturday, transhipping to "Morialta" leaving there on Sunday for Port Augusta via ports, arriving back in Adelaide on the following Thursday, i.e. about nine days trip. The cost of the double trip will, of course, be more than the ordinary "round trips."

# GENERAL INFORMATION.

---

## CONDITIONS AND REGULATIONS.

Passengers should make themselves acquainted with conditions and regulations on the Company's Passage Ticket.

Deck chairs received on board at passengers' risk.

## BREAKING JOURNEY.

Saloon passengers can break journey at any port en route, but must complete the voyage covered by the ticket within six months of embarkation.

Passengers are respectfully requested to notify when booking should they desire to break journey at any port.

## HOW TO BOOK.

If unable to call, write and enclose the full fare or half of it as a deposit. This secures Berths, and you can pay the balance at any time before embarkation.

Passengers desirous of securing accommodation should, when writing, state clearly the date on which they propose sailing, the class of accommodation required—in the case of a party, the sex and relationship of each person (and also the ages in the case of children)—and whether upper or lower berths are preferred.

## ENGAGEMENT OF BERTH.

A berth will not be considered definitely reserved until half of the passage-money has been paid, the balance to be paid before embarkation.

## LUGGAGE.

Saloon Passengers will be allowed 20 cubic feet each adult, Second Class 10 feet. Children paying half-fare half these measurements. Every package must have passenger's name and destination distinctly marked on it. Only the personal baggage of the passenger will be carried as luggage. Merchandise cannot be shipped as luggage.

Special Labels are issued gratis by the Company to ensure passengers' luggage reaching proper destination, and same can be obtained on application at the Company's Offices.

Boxes for the cabin should not exceed 2 ft. 8 in. x 1 ft. 6 in. x 1 ft. 2 in. One package of this size can be taken by each adult passenger, but will be reckoned in the allowance.

The ship is not responsible for loss, damage, or detention of luggage under any circumstances.

Baggage not claimed is deposited with the Branches, Agencies, or Custom Houses at the owner's risk and expense.

## CAUTION—GOODS OF DANGEROUS NATURE.

Passengers must not take on board any goods of a dangerous nature. Any person so doing will not only be liable to the penalties imposed by the Statute, but also for all damage sustained in consequence of such shipment.

Dogs, cats, pet birds, and other small domestic animals will be carried on deck at owner's risk. They must be kept in cages or dog kennels; the cages, kennels, and food to be provided by owners themselves, unless specially arranged otherwise. The rate of charges for them varies according to size.

Passengers taking Return Ticket to Adelaide must Re-book Berths at Adelaide or Port Adelaide for Return Journey.

Children under 12 years must be accompanied by a Guardian.

