



AUSTRALIAN BUREAU OF STATISTICS

CANBERRA

**EMPLOYED WAGE
AND SALARY
EARNERS
AUSTRALIA**

MARCH QUARTER 1987

CATALOGUE NO. 6248.0

EMBARGOED UNTIL 11.30 A.M. 29 JUNE 1987

EMPLOYED WAGE AND SALARY EARNERS
AUSTRALIA
MARCH QUARTER 1987

IAN CASTLES
Australian Statistician

AUSTRALIAN BUREAU OF STATISTICS
(P)

CATALOGUE NO. 6248.0

PHONE INQUIRIES

• *about these statistics* — contact Dr. Michael J. Cook on Canberra (062) 52 6655 or any ABS State office.

• *about other statistics and ABS services* — contact Information Services on Canberra (062) 52 6627, 52 5402, 52 6007 or any ABS State office.

MAIL INQUIRIES

• write to Information Services, ABS, PO Box 10, Belconnen, ACT 2616 or any ABS State office.

ELECTRONIC SERVICES

• on VIATEL — key *656#.

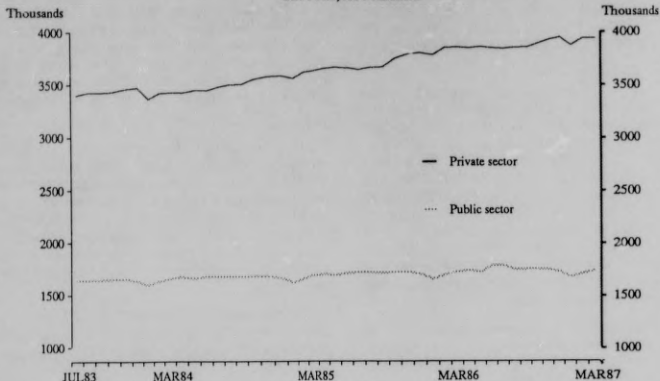
• on AUSSTATS — phone (062) 52 6017.

• on TELESTATS — phone (062) 52 5404.

CONTENTS

<i>Table</i>		<i>Page</i>
..	Summary of Findings	1
..	Explanatory Notes	3
1	Employees, States and Territories, sectors	6
2	Gross Earnings, States and Territories, sectors	7
	Employed wage and salary earners—	
3	States and Territories — sectors	8
4	Australia — sector and industry	9
5	New South Wales — sector and industry	13
6	Victoria — sector and industry	15
7	Queensland — sector and industry	17
8	South Australia — sector and industry	19
9	Western Australia — sector and industry	21
10	Tasmania — sector and industry	23
11	Northern Territory — industry	25
12	Australian Capital Territory — industry	26
13	Private sector — Employer size and industry	27
..	Technical Note	28

SUMMARY OF FINDINGS

EMPLOYED WAGE AND SALARY EARNERS,
SECTORS, AUSTRALIA

In March 1987 the total number of employed wage and salary earners in Australia has been estimated as 5,683,600 of whom 69.4 per cent were employed in the private sector.

Since the commencement of the Survey of Employment and Earnings in September quarter 1983 the total number of wage and salary earners has increased by 12.1 per cent. Over this period the largest growth has occurred in the private sector, 15.1 per cent, compared with the public sector growth of 5.9 per cent. This trend continued in the year to March quarter 1987 with the private sector increasing by 2.3 per cent and the public sector increasing by 0.7 per cent. The longer term growth in the number of employees is shown in the graph above. In the year to March 1987 the number of employees increased by 98,400 or 1.8 per cent.

The sharp drop in the number of employees in the public sector for December-January each year is due mainly to temporary staff in the education industry not being employed over the Christmas holidays. It should also be noted that, in June and July of 1986, the public sector included some 40,700 temporary employees engaged for work on the Census of Population and Housing.

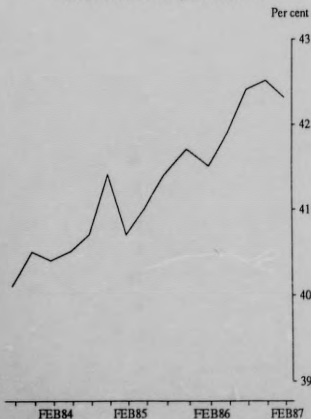
Employed male and female wage and salary earners

In February 1987 there were 3,262,400 male employees and 2,391,300 female employees. In the year to February 1987 the number of male employees increased by 8,000 (0.2 per cent) and the number of female employees increased by 86,500 (3.8 per cent).

The increase in male employees in the year to February 1987 occurred entirely in the private sector. There was a decrease of 10,600 male employees in the

public sector. For females, employment growth continued in both the public and private sectors but with the majority of growth, 80.0 per cent, occurring in the private sector.

The growth in the total number of female employees relative to male employees continues recent trends. In February 1985 females comprised 40.7 per cent of employed wage and salary earners. By February 1986 this had risen to 41.5 per cent and in February 1987 it was 42.3 per cent.

FEMALE EMPLOYEES AS A PERCENTAGE OF
TOTAL EMPLOYEES, AUSTRALIA

Industries

The graph below presents a comparison of the growth in the numbers of employed wage and salary earners which has taken place since the inception of the Survey of Employment and Earnings in 1983 and the growth since March 1986. This graph highlights the longer term trends and more recent patterns of employment growth.

The Mining and Manufacturing industries have had lower growth in employment than the overall average between 1983 and March 1987 (1.1 per cent and 3.8 per cent respectively compared with 12.1 per cent for 'All industries'). In the 12 months to March 1987, the number of employed wage and salary earners fell by 7.7 per cent in the Mining industry, with a marginal decline in Manufacturing (-0.8 per cent) occurring over the same period. The number of wage and salary earners employed in the Electricity, gas and water industry decreased between 1983 and March 1987 (-3.5 per cent) with the bulk of the fall being recorded in the last 12 months, when employment declined by 2.2 per cent.

The Construction (10.9 per cent), Communication (7.5 per cent), and Transport and storage (6.8 per cent) industries experienced lower than average gains in numbers of employed wage and salary earners since 1983. In the year to March 1987 these same industries also had very small gains in employment.

The major growth industries in terms of employment since 1983 have been Finance, property and business services (26.5 per cent), Recreation, personal and other services (19.2 per cent), Wholesale trade (14.1 per cent), Retail trade (14.0 per cent), Community services (14.1 per cent), and Public administration (12.6 per cent).

These same industries continued to grow in the year to March 1987, although the growth in Recreation, per-

sonal and other services (1.1 per cent) failed to keep up with the overall growth in employed wage and salary earners (1.8 per cent). The leading industry in terms of employment growth in the year to March 1987 continued to be Finance, property and business services (4.7 per cent). Wholesale trade (4.3 per cent) and Community services (3.6 per cent) also displayed relatively strong growth in employment, while Public administration (2.4 per cent) and Retail trade (2.2 per cent) grew at levels above average although closer to that of 'All industries'.

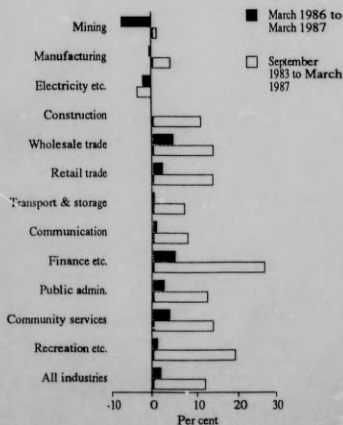
Earnings

Total earnings for employed wage and salary earners in the March quarter 1987 were estimated as \$26,853m. This represents an increase of 6.3 per cent over March quarter 1986 and a decrease of 8.4 per cent since the previous quarter. Such declines in total earnings in the March quarter are to be expected as the December quarter traditionally shows a large increase in total earnings due to the prepayment of holiday pay and leave loadings.

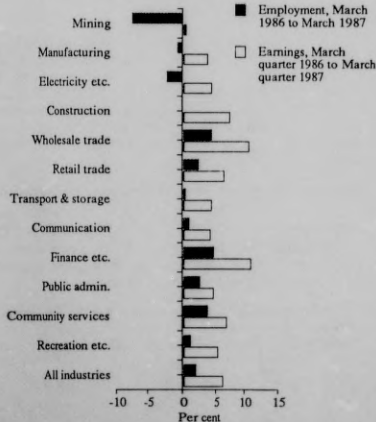
In the year to March 1987, gross earnings grew in all industries. The largest increases occurred in Finance, property and business services (11.1 per cent) and Wholesale trade (10.8 per cent).

A comparison of the percentage growth in employment and the percentage growth in gross earnings by industry is displayed in the graph below for the year to March 1987. In each industry category the percentage increase in total earnings was greater than the increase in employment. Over 'All industries' the difference was 4.5 percentage points, or a 6.3 per cent growth in earnings as compared to a 1.8 per cent growth in employment. The largest discrepancies occur in the Mining (8.2 percentage points) and Construction (7.6 percentage points) industries.

EMPLOYMENT GROWTH,
AUSTRALIA



EMPLOYMENT AND EARNINGS GROWTH,
AUSTRALIA



EXPLANATORY NOTES

Introduction

This publication contains results of the quarterly Survey of Employment and Earnings which was introduced in the September quarter 1983. The survey is designed to obtain, from employers, information on numbers of wage and salary earners employed each month and their quarterly earnings. It replaces the civilian employees series, based principally on information obtained from payroll tax returns, which was discontinued after April 1980.

2. Background information on the reasons for the introduction of the new survey is provided in *Information Paper: Review of ABS Employment Statistics (6239.0)* published on 8 July 1981. Further information on the differences in concepts, methodology and coverage of the old and new employment series is provided in *Information Paper: New Statistical Series: Employment, Average Weekly Earnings, Job Vacancies and Overtime (6256.0)* issued on 21 June 1984.

Scope of the survey

3. All wage and salary earners who received pay in any pay period ending within the calendar quarter were represented in the survey, except members of the Australian permanent defence forces; employees of enterprises in the private sector primarily engaged in agriculture, forestry, fishing and hunting; employees in private households employing staff; employees of overseas embassies, consulates, etc; employees based outside Australia; self-employed persons such as subcontractors, owner drivers, and consultants.

4. As an indicator of the number of employed wage and salary earners out of scope of the survey, and included in the first three groups above, the following estimates derived from other sources show the average quarterly number of employees for the year ended June 1986 as: New South Wales 69,800; Victoria 43,600; Queensland 42,700; South Australia 18,400; Western Australia 20,100; Tasmania 7,200; Northern Territory 3,500; Australian Capital Territory 6,500; and Australia 211,800.

Survey design

5. The survey is conducted by mail each quarter with data collected on monthly employment and quarterly earnings. For the first and last month of each quarter the number of persons is collected; for the mid month of each quarter, details of males and females, full-time and part-time are collected. (Separate estimates of full-time and part-time employees have not been included in this issue, but are available on request.)

6. For the *Private sector*, a sample of approximately 20,000 private employers was selected from the ABS register of businesses to ensure adequate State and industry representation. The statistical unit for the survey comprises all activities of an enterprise in a particular State. Each statistical unit was classified to an industry which reflected the predominant activity of the enterprise

in the State. In a small number of cases where an enterprise had significant employment in more than one industry, a separate statistical unit was created for each industry. Periodically, a review is undertaken to determine whether existing enterprises which are split into separate statistical units should continue to report on that basis. In addition, larger enterprises which are not currently split into separate statistical units are examined to decide whether they should be split for the purpose of reporting employment. Any changes in reporting arrangements as a result of such reviews can have an impact on the industry estimates at the time of their implementation. The statistical units are stratified by State, industry, and size of employment. A simple random sample is selected from each stratum.

7. For the *Public sector*, statistical units are derived in the same way as for the private sector; data are collected in the survey from all public sector units.

Definitions

8. *Reference period* for the number of employees is the last pay period ending on or before the third Friday in each month.

9. *Number of employees* refers to all employees who received pay for any part of the relevant pay period. All permanent, temporary, casual, managerial and executive employees are included. Part-time and casual employees who may have worked only a few hours during the reference period are included. Employees on paid leave and those employees on workers' compensation who continue to be paid through the employer's payroll are also included. Casual employees who work on an irregular basis and who were not paid during the relevant pay period, employees on leave without pay, on strike or stood down without pay for the whole of the pay period are excluded.

10. *Full-time employees* are permanent, temporary and casual employees who normally work the agreed or award hours for a full-time employee in their occupation and received pay for any part of the reference period; if agreed or award hours do not apply, employees are regarded as full-time if they ordinarily work 35 hours or more per week.

11. *Part-time employees* are permanent, temporary and casual employees who are not classified as full-time employees as defined.

12. *Public employees* comprise not only administrative employees but also all other employees of Commonwealth, State and Local government businesses and financial undertakings engaged in services such as railways, road transport, banks, postal and telecommunications, air transport, education, radio, television, police, public works, factories, marketing authorities, hospitals and welfare institutions.

13. *Commonwealth employees* are those employed by all departments, agencies and authorities created by or

reporting to the Commonwealth Parliament. Those bodies run jointly by Commonwealth and State governments are classified to Commonwealth.

14. *State employees* are those employed by all State government departments and authorities created by, or reporting to, State Parliaments, including organisations for which the Commonwealth has assumed financial responsibility, e.g. universities. Following self-government, the Northern Territory administration has been classified as a 'State' government.

15. *Local government employees* are those employed by municipalities and shires and other local authorities created by or subject to the provisions of local government legislation, such as county councils in New South Wales.

16. *Reference period for earnings* constitutes all pay periods for which the end of the pay period falls within the quarter.

17. *Gross earnings* are payments to employees before taxation and other deductions and comprise ordinary time and overtime earnings; overaward payments; penalty payments, shift and other remunerative allowances; commissions and retainers; bonuses and similar payments; payments under incentive or piecework; payments under profit-sharing schemes; leave loadings; annual and long service leave payments; sick leave payments; advance and retrospective payments; salaries and fees paid to company directors, members of boards, committees, commissions, councils, etc.; amounts paid to employees on workers' compensation which are not covered by insurance, i.e. 'make-up' pay; and severance, termination and redundancy payments.

Reliability of estimates

18. Estimates are subject to sampling and non-sampling errors. For more information refer to the Technical note.

Interpretation of estimates of movements

19. While estimates of employed wage and salary earners are presented in this publication for each month of the calendar quarter, the survey is conducted quarterly and the sample of employers is updated each quarter to reflect changes in the ABS register of business units, from which the sample is selected. These changes arise from the emergence of new businesses, takeovers and mergers, changes to industry classification, size of employment, and businesses which have ceased operations. Periodically, the ABS takes special steps to improve the coverage of the register in specific industry sectors. Recently, a check was undertaken of all small businesses listed on the register. Such updating of the register can contribute to sudden changes in the estimates of employed wage and salary earners, and earnings for various industries.

20. Estimates of monthly movements within each calendar quarter arise solely from changes in reported employment by employers but movements between quarters also reflect changes resulting from updating the survey sample.

Comparability of results

21. The new series differs in several important ways from the former payroll tax-based civilian employees series and estimates of employed wage and salary earners provided by the Labour Force Survey. It provides an estimate of the number of jobs occupied by people, whereas the other two series provide estimates of people in jobs. For the new series, data are obtained directly from a sample survey of employers drawn from the ABS register of business units which is more complete than the coverage provided by employers subject to payroll tax. Comparability with Labour Force Survey estimates is affected by the use of a different survey methodology and definitions. In addition, because of unavoidable time delays, which can vary across States, lags occur between the birth of new businesses and their appearance on the ABS register. They will not be represented in the sample selected from the register for one or two calendar quarters after such businesses have commenced operation. As a consequence, estimates of movements in this series will lag those produced from the Labour Force Survey, particularly at a time of upward movement in the business cycle. A detailed description of the comparability between the new Survey of Employers series, the former payroll tax-based Civilian Employees series and the series provided by the Labour Force Survey is presented in the *Information Paper: New Statistical Series: Employment, Average Weekly Earnings, Job Vacancies and Overtime* (6256.0). Additional detail on the differences between the Survey of Employers and the Labour Force Survey series appears in the *Information Paper: Comparison of Employment Estimates from the Labour Force Survey and the Survey of Employment and Earnings* (6263.0).

22. The Survey of Employment and Earnings (SEE) collects total quarterly employee earnings primarily for use in estimating the gross domestic product component of the Australian National Accounts. Whilst average employee earnings can be derived from these data, the results will not be comparable with those from the Survey of Average Weekly Earnings (AWE) published in *Average Weekly Earnings, States and Australia* (6302.0). The SEE collects the sum of employee earnings paid in all pay periods ending in a calendar quarter and the results will be affected by the varying number of pay periods from quarter to quarter, whereas the AWE relates to a specified pay period within a quarter and is not subject to such influences. In addition, certain types of payments within the scope of SEE, such as retrospective pay, pay in advance, leave loadings and severance, termination and redundancy payments are specifically excluded from the AWE. The SEE earnings data are also subject to seasonal variations particularly in December and March quarters due to the incidence of holidays taken in January being paid in advance and the earnings being reported in December quarter figures.

23. Prior to July 1983 the number of public sector employees was derived from a variety of administrative sources and published in *The Labour Force, Australia* (6203.0). Commonwealth government departments and authorities generally reported the number of employees on the payroll on the last working day of the month, but

for State and Local government employees data were usually provided for the last day of the last pay period ending in the month. In an attempt to provide unduplicated estimates of the number of persons who were wage and salary earners, certain public sector returns were adjusted to exclude some part-time employees considered to have full-time jobs elsewhere.

24. Public employment figures for July 1983 and subsequent months are based on data obtained from government departments and authorities using the same questionnaire, definitions, reference period, collection and processing procedures as for the sample of private employers.

25. Differences occur between the new and old public sector series because of the changes to collection arrangements, reference period, the treatment of part-time employees and inclusion of public employees in forestry and services to agriculture (11,200 in May 1983). To provide a statistical link between the new and old public sector series, information on the new and old basis for April, May and June 1983 was released in the September quarter 1983 issue of this publication.

Industry classification

26. Industry is classified according to the *Australian Standard Industrial Classification (ASIC) 1983 Edition*, (1201.0)

Size classification

27. To derive estimates for Table 13, each of the approximately 20,000 statistical units (see paragraph 6) in the private sector is allocated a size classification based on the number of employees actually reported for the middle month of the quarter. This size classification reflects the employment size of an enterprise in a particular State or Territory and not the employment size of an enterprise Australia wide.

28. Data presented in Table 13 shows the contribution to total employment of enterprises falling into three size groups. Over a period, the composition of these categories will vary as changes in individual employment levels cause some enterprises to migrate from one size group to another. This will have some effect on changes over time in the distribution of employment by size of enterprise.

Related publications

29. Users may also wish to refer to the following publications which are available on request:

The Labour Force, Australia (6203.0)—issued monthly

Information Paper: Comparison of Employment Estimates from the Labour Force Survey and the Survey of Employment and Earnings (6263.0)—issued 11 July 1985

Average Weekly Earnings, Australia (Preliminary) (6301.0) and *Average Weekly Earnings, States and Australia* (6302.0)—issued quarterly

Pay Periodicity of Gross Wages and Salaries, Australia, September quarter 1984 (6347.0)—issued 5 September 1985

Occasional Paper No. 1986/1: Statistics on Wages, Earnings, Income and Labour Costs — A Guide to Their Concepts, Measurement and Usage—issued June 1986

A Guide to Labour Statistics (6102.0)—issued 10 February 1986

30. Current publications produced by the ABS are listed in the *Catalogue of Publications, Australia* (1101.0). The ABS also issues, on Tuesdays and Fridays, a *Publications Advice* (1105.0) which lists publications to be released within the next few days. The Catalogue and Publications Advice are available from any ABS office.

Unpublished statistics

31. In some cases, the ABS can also make available other information which is not published. This information may be made available in one or more of the following forms: microfiche, photocopy, data tape, computer printout, clerically-extracted tabulation. Generally, a charge is made for providing unpublished information. Inquiries should be made to the officer whose name appears in the *Phone Inquiries* section of the Inquiries box at the front of this publication, or to Information Services in the nearest ABS office.

Electronic services

32. VIATEL. Key *656# for selected current economic, social, and demographic statistics.

AUSSTATS. Thousands of up-to-date time series are available on this ABS on-line service through CSIRONET. For further information phone the AUSSTATS Help Desk on (062) 52 6017.

TELESTATS. This service provides foreign trade statistics tailored to users' requirements. Further information is available on (062) 52 5404.

Symbols and other usages

— nil or rounded to zero

33. Where figures have been rounded, discrepancies may occur between sums of the component items and totals.

TABLE 1. EMPLOYED WAGE AND SALARY EARNERS, AUSTRALIA, PERSONS ('000)

Month	N.S.W.	Vic.	Qld	S.A.	W.A.	Tas.	N.T.	A.C.T.	Aust.
PRIVATE									
1984- June	1,247.3	949.8	500.2	297.6	299.1	85.5	25.9	42.1	3,447.6
1985- June	1,300.5	1,026.2	537.5	310.6	322.8	90.4	31.4	43.8	3,663.1
1986- January	1,334.8	1,087.3	540.9	313.2	340.1	91.1	31.1	43.3	3,781.9
February	1,359.0	1,106.2	550.7	318.4	346.9	93.2	33.5	44.9	3,852.9
March	1,359.4	1,109.9	548.1	317.5	346.5	93.7	33.7	45.9	3,854.7
April	1,345.9	1,117.4	552.3	316.0	343.0	93.8	35.2	45.0	3,843.7
May	1,349.4	1,122.1	555.5	314.4	343.8	93.6	36.4	44.8	3,860.0
June	1,347.1	1,115.8	551.0	313.7	344.9	93.8	36.7	45.2	3,848.1
July	1,354.0	1,109.7	541.0	311.6	349.7	94.0	33.9	46.6	3,840.6
August	1,357.2	1,113.5	542.6	310.3	352.2	94.1	34.9	46.3	3,850.9
September	1,357.2	1,113.4	543.8	310.6	353.9	93.2	35.0	46.4	3,853.5
October	1,372.4	1,109.9	544.0	327.4	356.7	95.5	34.6	48.8	3,889.4
November	1,388.1	1,120.8	546.7	329.1	360.6	98.0	33.5	48.3	3,925.1
December	1,397.2	1,130.5	546.8	329.2	365.2	98.0	32.8	48.5	3,948.2
1987- January	1,369.3	1,099.4	543.1	318.5	363.5	97.6	32.6	47.3	3,871.3
February	1,391.9	1,121.6	552.5	321.8	371.5	98.9	33.2	49.2	3,940.5
March	1,390.2	1,129.6	550.9	322.8	366.1	99.9	32.9	49.3	3,941.7
PUBLIC									
1984- June	558.9	428.3	256.5	150.9	152.1	51.0	20.9	66.5	1,685.2
1985- June	564.9	444.0	258.9	152.1	156.3	51.6	21.2	69.7	1,718.6
1986- January	540.0	433.7	251.5	144.8	150.4	49.6	21.7	68.9	1,660.7
February	558.8	441.9	256.6	150.2	156.8	50.2	21.9	69.9	1,706.3
March	567.3	446.3	259.6	153.3	159.4	52.1	21.9	70.7	1,730.6
April	566.6	450.6	261.0	154.6	159.7	53.4	22.3	72.2	1,740.4
May	556.9	447.9	259.6	153.9	160.8	53.5	22.5	72.4	1,727.4
June(a)	582.8	465.7	268.6	156.8	165.0	55.0	23.3	75.3	1,790.5
July(a)	586.4	464.0	267.1	158.2	163.2	54.6	23.0	75.1	1,789.4
August	571.1	456.2	260.1	155.4	159.5	53.5	22.0	72.7	1,751.1
September	573.2	454.1	261.6	154.1	159.7	53.8	22.0	72.0	1,750.0
October	574.0	457.0	260.0	155.6	158.7	53.5	22.3	72.5	1,753.6
November	574.2	452.5	258.5	156.0	159.4	53.2	22.0	72.5	1,748.2
December	562.2	448.6	256.2	154.9	156.4	53.5	22.1	71.8	1,725.6
1987- January	548.2	438.2	249.5	146.7	151.5	49.9	21.8	70.3	1,676.2
February	561.6	446.0	254.5	152.3	155.3	49.9	21.9	71.6	1,713.2
March	574.5	450.1	258.0	154.4	158.2	52.5	21.9	72.3	1,741.9
PRIVATE AND PUBLIC									
1984- June	1,806.3	1,378.1	756.7	448.5	451.2	136.5	46.8	108.6	5,132.8
1985- June	1,865.4	1,470.2	796.4	462.7	479.0	141.9	52.6	113.5	5,381.8
1986- January	1,874.9	1,521.0	792.4	458.0	490.4	140.7	52.8	112.2	5,442.5
February	1,917.8	1,548.1	807.3	468.6	503.7	143.4	55.4	114.9	5,559.2
March	1,926.6	1,556.2	807.6	470.9	505.9	145.8	55.6	116.6	5,585.2
April	1,912.5	1,568.0	813.3	470.6	502.7	147.2	57.5	117.3	5,589.1
May	1,906.3	1,569.9	815.1	468.3	504.6	147.1	58.9	117.1	5,587.4
June(a)	1,929.9	1,581.4	819.5	470.5	509.9	148.8	60.0	118.5	5,638.6
July(a)	1,940.4	1,573.7	808.0	469.8	512.9	148.6	56.8	119.7	5,630.1
August	1,928.3	1,569.7	802.7	465.7	511.7	147.5	56.9	118.3	5,600.9
September	1,930.3	1,567.5	805.5	464.7	513.5	147.0	57.0	119.1	5,604.7
October	1,946.5	1,566.9	804.0	483.0	515.4	149.0	56.8	121.3	5,643.0
November	1,962.3	1,573.3	805.2	485.1	520.0	151.1	55.5	120.8	5,673.3
December	1,959.4	1,579.1	803.0	484.1	521.5	151.5	55.0	120.3	5,673.8
1987- January	1,917.5	1,537.6	792.7	465.2	515.1	147.5	54.4	117.6	5,547.4
February	1,953.5	1,567.7	807.0	474.0	526.9	148.8	55.1	120.8	5,653.8
March	1,964.7	1,579.7	808.9	477.2	524.3	152.4	54.7	121.6	5,683.6

(a) Includes temporary Population Census employees.

TABLE 2. GROSS EARNINGS, STATES AND TERRITORIES, SECTORS
 (\$m)

Quarter	N.S.W.	Vic.	Qld	S.A.	W.A.	Tax.	N.T.	A.C.T.	Aust.
PRIVATE									
1983-84	19,652.6	14,668.9	7,315.1	4,138.0	4,572.7	1,215.4	383.0	538.2	52,484.0
1984-85	21,719.3	16,427.6	8,034.9	4,729.9	5,150.5	1,381.4	494.7	640.4	58,578.8
1985-86	24,030.5	18,788.3	8,830.5	5,171.7	5,869.0	1,513.7	601.1	708.2	65,513.5
1984-									
March	4,759.5	3,522.9	1,740.7	1,000.4	1,111.0	299.6	92.2	136.6	12,662.9
June	5,111.6	3,781.9	1,900.4	1,108.6	1,167.3	319.2	105.6	150.3	13,654.8
September	5,250.7	3,878.5	1,959.4	1,134.2	1,232.7	324.8	114.7	156.5	14,051.6
December	5,551.3	4,287.3	2,045.6	1,217.4	1,302.1	359.3	120.3	157.6	15,041.0
1985-									
March	5,246.8	3,933.5	1,913.8	1,114.3	1,258.9	336.4	120.0	154.4	14,078.1
June	5,670.5	4,328.3	2,116.0	1,264.0	1,356.8	360.9	139.6	172.0	15,408.1
September	5,631.1	4,382.7	2,115.4	1,261.4	1,375.2	348.6	142.2	164.2	15,420.9
December	6,287.6	4,827.5	2,278.2	1,344.9	1,496.7	395.7	150.4	181.4	16,962.5
1986-									
March	5,872.1	4,601.2	2,168.6	1,248.0	1,473.4	374.4	142.8	176.8	16,057.4
June	6,239.7	4,977.4	2,268.3	1,317.3	1,523.6	395.0	165.7	185.7	17,072.8
September	6,498.2	5,167.5	2,338.2	1,318.7	1,606.6	397.0	167.7	193.8	17,687.8
December	6,960.5	5,510.1	2,429.5	1,440.3	1,701.1	440.3	157.1	205.9	18,844.8
1987-									
March	6,408.2	4,915.6	2,267.5	1,320.7	1,627.7	404.4	146.1	203.1	17,293.2
PUBLIC									
1983-84	10,856.6	8,412.5	4,630.3	2,844.4	2,752.9	954.0	461.8	1,445.7	32,358.2
1984-85	11,678.5	9,088.7	5,002.5	3,094.6	3,069.9	1,038.2	497.3	1,607.0	35,076.7
1985-86	12,562.3	9,757.9	5,363.1	3,267.9	3,299.5	1,123.2	556.4	1,777.8	37,708.0
1984-									
March	2,597.9	2,107.2	1,117.9	680.9	671.0	221.1	110.2	341.2	7,847.5
June	2,902.3	2,172.6	1,209.8	757.1	733.1	257.8	128.7	407.1	8,568.4
September	2,771.2	2,323.5	1,241.6	743.7	743.4	246.0	116.6	371.5	8,557.4
December	3,057.5	2,259.1	1,240.5	793.3	790.5	281.4	130.7	423.9	8,976.9
1985-									
March	2,775.7	2,220.0	1,232.2	714.5	728.8	236.3	115.1	380.3	8,402.9
June	3,074.1	2,286.1	1,288.2	843.2	807.2	274.5	134.9	431.3	9,139.5
September	2,961.2	2,440.7	1,297.8	782.0	777.5	265.0	124.8	410.9	9,060.0
December	3,295.7	2,486.0	1,351.3	851.3	851.2	307.4	150.8	454.7	9,748.4
1986-									
March	3,047.7	2,399.5	1,346.3	795.8	802.1	259.2	130.5	426.9	9,207.9
June	3,257.7	2,431.7	1,367.7	838.7	868.8	291.5	150.3	485.3	9,691.7
September	3,186.5	2,668.7	1,412.0	846.6	839.5	277.9	139.3	457.0	9,827.4
December	3,526.0	2,707.0	1,423.7	904.3	916.4	317.4	157.5	503.0	10,455.3
1987-									
March	3,161.7	2,544.2	1,377.1	790.1	830.2	268.7	134.5	452.9	9,559.4
PRIVATE AND PUBLIC									
1983-84	30,569.2	23,081.4	11,945.4	6,982.5	7,325.5	2,169.4	844.9	1,983.9	84,842.2
1984-85	33,398.0	25,516.3	13,037.4	7,824.6	8,220.4	2,419.6	992.0	2,247.4	93,655.6
1985-86	36,592.8	28,546.7	14,193.6	8,439.6	9,168.6	2,636.9	1,157.5	2,486.0	103,221.6
1984-									
March	7,357.4	5,630.1	2,858.6	1,681.3	1,782.1	520.7	202.4	477.7	20,510.4
June	8,013.9	5,954.5	3,110.2	1,875.6	1,900.5	576.9	234.3	557.4	22,223.2
September	8,021.9	6,202.0	3,201.0	1,877.9	1,976.1	570.8	231.3	527.9	22,609.0
December	8,608.8	6,546.4	3,286.2	2,010.7	2,092.6	640.7	251.0	581.5	24,017.9
1985-									
March	8,022.5	6,153.5	3,146.0	1,828.8	1,987.7	572.7	235.1	534.6	22,481.0
June	8,744.8	6,614.4	3,404.2	2,107.2	2,164.0	635.4	274.5	603.3	24,547.8
September	8,592.3	6,823.4	3,413.2	2,043.4	2,152.8	613.7	267.0	575.1	24,480.9
December	9,383.3	7,313.4	3,629.6	2,196.2	2,347.9	703.2	301.2	636.1	26,710.9
1986-									
March	8,919.8	7,007.7	3,514.9	2,043.9	2,275.5	633.5	273.3	603.7	25,265.3
June	9,497.4	7,409.1	3,635.9	2,156.1	2,392.4	686.5	316.0	671.0	26,764.5
September	9,684.7	7,836.2	3,750.2	2,165.3	2,446.1	674.8	307.0	650.8	27,515.2
December	10,486.4	8,217.1	3,853.3	2,344.5	2,617.5	757.8	314.6	708.9	29,300.1
1987-									
March	9,569.9	7,459.7	3,644.6	2,110.8	2,457.9	673.1	280.6	656.0	26,852.7

TABLE 3. EMPLOYED WAGE AND SALARY EARNERS, STATES AND TERRITORIES

State, Territory/Sector	Number of employees ('000)						Gross earnings	
	March 1986	December 1986	January 1987	February 1987		March 1987	March Quarter 1987	
	Persons	Persons	Persons	Males	Females	Persons	\$m	
New South Wales	1,926.6	1,959.4	1,917.5	1,133.3	820.1	1,953.5	1,964.7	9,569.9
Private	1,359.4	1,397.2	1,369.3	790.4	601.4	1,391.9	1,390.2	6,408.2
Public	567.3	562.2	548.2	342.9	218.7	561.6	574.5	3,161.7
Commonwealth	133.9	137.9	140.1	90.9	48.4	139.3	140.4	796.7
State	371.4	361.6	345.6	201.7	157.8	359.5	371.4	2,035.5
Local	61.9	62.6	62.5	50.3	12.5	62.8	62.7	329.5
Victoria	1,556.2	1,579.1	1,537.6	893.7	674.0	1,567.7	1,579.7	7,459.7
Private	1,105.9	1,130.5	1,099.4	636.3	485.3	1,121.6	1,129.6	4,915.6
Public	446.3	448.6	438.2	257.4	188.7	446.0	450.1	2,544.2
Commonwealth	101.8	100.6	100.8	68.6	32.6	101.1	101.1	594.8
State	302.4	305.2	296.7	165.0	137.2	302.2	306.1	1,775.1
Local	42.1	42.8	40.7	23.8	18.9	42.7	42.9	174.3
Queensland	807.6	803.0	792.7	478.5	328.5	807.0	808.9	3,644.6
Private	548.1	546.8	543.1	318.7	233.7	552.5	550.9	2,267.5
Public	259.6	256.2	249.5	159.7	94.8	254.5	258.0	1,377.1
Commonwealth	50.9	51.1	50.6	32.9	17.7	50.6	50.6	282.3
State	180.6	178.1	172.6	104.2	73.2	177.3	180.8	975.1
Local	28.0	27.0	26.4	22.7	3.9	26.6	26.6	119.7
South Australia	470.9	484.1	465.2	271.4	202.6	474.0	477.2	2,110.8
Private	317.5	329.2	318.5	183.1	138.7	321.8	322.8	1,320.7
Public	153.3	154.9	146.7	88.3	63.9	152.3	154.4	790.1
Commonwealth	36.5	36.6	36.6	26.8	9.6	36.4	36.3	204.1
State	108.3	110.0	102.0	55.6	52.1	107.7	110.0	547.5
Local	8.5	8.2	8.1	5.9	2.3	8.2	8.1	38.5
Western Australia	505.9	521.5	515.1	300.7	226.2	526.9	524.3	2,457.9
Private	346.5	365.2	363.5	212.3	159.2	371.5	366.1	1,627.7
Public	159.4	156.4	151.5	88.4	67.0	155.3	158.2	830.2
Commonwealth	26.8	27.3	27.0	17.2	9.9	27.1	27.0	150.0
State	121.8	118.8	114.5	63.7	54.2	117.9	120.7	636.1
Local	10.8	10.3	10.1	7.5	2.8	10.3	10.5	44.1
Tasmania	145.8	151.5	147.5	87.9	61.0	148.8	152.4	673.1
Private	93.7	98.0	97.6	57.3	41.6	98.9	99.9	404.4
Public	52.1	53.5	49.9	30.6	19.3	49.9	52.5	268.7
Commonwealth	10.2	10.1	10.2	7.1	3.0	10.2	10.2	57.6
State	38.4	39.8	36.3	20.7	15.6	36.3	38.8	193.9
Local	3.6	3.5	3.4	2.8	.7	3.5	3.5	17.1
Northern Territory	55.6	55.0	54.4	32.3	22.8	55.1	54.7	280.6
Private	33.7	32.8	32.6	20.5	12.7	33.2	32.9	146.1
Public	21.9	22.1	21.8	11.8	10.1	21.9	21.9	134.5
Commonwealth	5.0	5.2	5.2	3.3	1.8	5.1	5.1	30.3
State	16.1	16.2	15.9	8.0	8.0	16.0	16.0	100.5
Local	.9	.8	.8	.6	.2	.8	.8	3.7
Aust. Capital Territory	116.6	120.3	117.6	64.7	56.2	120.8	121.6	656.0
Private	45.9	48.5	47.3	24.5	24.7	49.2	49.3	203.1
Public	70.7	71.8	70.3	40.2	31.5	71.6	72.3	452.9
Australia	5,585.2	5,673.8	5,547.4	3,262.4	2,391.3	5,653.8	5,683.6	26,852.7
Private	3,854.7	3,948.2	3,871.3	2,243.1	1,697.4	3,940.5	3,941.7	17,293.2
Public	1,730.6	1,725.6	1,676.2	1,019.3	693.9	1,713.2	1,741.9	9,559.4
Commonwealth	435.2	440.1	440.2	286.7	154.3	441.0	442.4	2,565.8
State(a)	1,139.5	1,130.1	1,084.0	619.2	498.3	1,117.4	1,144.4	6,266.8
Local	155.9	155.3	152.0	113.5	41.3	154.8	155.1	726.8

(a) Includes the Northern Territory Government, and employees of State governments employed in the ACT.

TABLE 4. EMPLOYED WAGE AND SALARY EARNERS, AUSTRALIA - SECTOR AND INDUSTRY

Industry	Number of employees ('000)							Gross earnings
	March 1986	December 1986	January 1987	February 1987		March 1987	March Quarter 1987	
	Persons	Persons	Persons	Males	Females	Persons	Persons	\$m
PRIVATE								
Mining	83.8	76.7	76.3	70.1	6.8	77.0	76.0	657.8
Manufacturing	1,007.2	1,004.4	987.0	724.5	276.5	1,001.0	1,002.3	5,007.8
Electricity, gas and water	6.3	6.0	6.1	5.1	1.0	6.1	6.2	39.7
Construction	211.2	207.6	207.1	184.3	31.8	216.1	215.4	1,099.7
Wholesale and retail trade	1,095.5	1,156.0	1,120.9	607.4	522.2	1,129.6	1,127.6	4,245.8
Transport and storage	138.2	143.8	141.1	106.4	36.5	142.9	142.7	772.7
Road transport	77.2	80.2	78.2	64.0	16.6	80.6	80.7	386.2
Other transport and storage	61.0	63.6	62.9	42.3	20.0	62.3	61.9	386.5
Finance, property and business services	534.1	563.9	552.4	269.0	291.1	560.1	562.2	2,735.5
Banking	80.7	82.2	82.7	37.8	45.3	83.1	83.5	388.6
Non-bank finance and investment	68.7	75.7	76.9	32.6	45.5	78.1	78.2	435.4
Insurance and services to insurance	54.6	55.7	54.3	26.5	28.7	55.1	55.5	301.8
Property and business services	330.1	350.4	338.5	172.1	171.7	343.8	345.0	1,609.6
Community services	401.7	415.3	408.3	108.4	316.0	424.3	429.5	1,631.5
Health	202.2	206.9	207.1	33.9	175.7	209.6	210.2	805.0
Education, museum and library services	87.4	84.5	77.6	24.6	62.1	86.7	89.9	369.9
Welfare and religious institutions	61.6	68.0	67.2	20.4	49.9	70.3	71.4	193.7
Other community services	50.5	55.8	56.4	29.5	28.3	57.7	58.0	262.9
Recreation, personal and other services(a)	376.2	374.1	371.4	167.8	215.1	383.0	379.2	1,100.5
Entertainment and recreational services	73.1	70.4	69.7	43.1	32.3	75.4	74.2	233.6
Restaurants, hotels, personal services	303.1	303.7	301.8	124.7	182.9	307.6	305.0	866.9
Total all industries(b)	3,854.7	3,948.2	3,871.3	2,243.1	1,697.4	3,940.5	3,941.7	17,293.2
COMMONWEALTH GOVERNMENT								
Manufacturing	25.3	23.5	23.3	19.8	3.7	23.6	23.4	127.7
Electricity, gas and water	1.8	1.8	1.8	1.5	.3	1.8	1.8	10.3
Construction	8.3	6.2	6.2	5.6	.7	6.3	6.3	36.4
Wholesale and retail trade	1.6	1.6	1.5	.8	.8	1.5	1.5	8.6
Transport and storage	39.8	40.2	40.9	33.0	7.9	40.8	40.8	280.6
Communication	135.1	136.1	136.6	103.2	32.1	135.3	136.2	739.9
Finance, property and business services	49.0	49.0	48.9	22.1	27.1	49.2	49.1	260.9
Public administration and defence(c)	107.3	112.1	114.3	63.4	51.7	115.1	115.2	669.8
Community services	56.6	58.4	55.0	30.0	25.8	55.8	56.4	344.0
Recreation, personal and other services(a)	10.3	11.1	11.5	7.2	4.4	11.6	11.6	86.9
Total all industries	435.2	440.1	440.2	286.7	154.3	441.0	442.4	2,565.8

For footnotes see end of table.

TABLE 4. EMPLOYED WAGE AND SALARY EARNERS, AUSTRALIA - SECTOR AND INDUSTRY-Continued

Industry	Number of employees ('000)							Gross earnings
	March 1986	December 1986	January 1987	February 1987		March 1987	March Quarter 1987	
	Persons	Persons	Persons	Males	Females	Persons	Persons	\$m
STATE GOVERNMENT								
Agriculture, forestry, fishing and hunting	8.4	8.1	8.0	6.7	1.3	8.0	8.1	46.8
Mining	6.9	7.1	7.1	6.9	.3	7.1	7.1	59.7
Manufacturing	27.5	25.6	25.4	23.6	2.5	26.1	25.9	136.1
Electricity, gas and water	105.4	103.5	103.5	92.7	10.5	103.3	102.8	678.4
Construction	41.5	39.7	39.4	34.9	4.7	39.6	39.4	222.1
Wholesale and retail trade	3.9	3.8	3.7	2.5	1.1	3.6	3.7	17.6
Transport and storage	109.5	108.1	106.9	97.4	8.4	105.8	105.2	653.5
Finance, property and business services	53.8	54.7	54.5	25.8	29.7	55.5	55.6	251.6
Public administration and defence(c)	72.4	73.8	71.0	44.1	28.1	72.2	72.4	442.2
Community services	697.1	692.7	651.5	278.9	404.0	683.0	711.1	3,702.3
Recreation, personal and other services	13.1	13.1	12.9	5.5	7.6	13.1	13.1	56.4
Total all industries	1,139.5	1,130.1	1,084.0	619.2	498.3	1,117.4	1,144.4	6,266.8
LOCAL GOVERNMENT								
Electricity, gas and water	25.1	24.8	24.8	22.7	2.1	24.8	24.8	143.0
Public administration and defence(c)	126.5	125.8	122.8	87.5	38.0	125.5	125.8	563.7
Other industries	4.3	4.7	4.4	3.3	1.2	4.5	4.5	20.1
Total all industries	155.9	155.3	152.0	113.5	41.3	154.8	155.1	726.8

For footnotes see end of table.

TABLE 4. EMPLOYED WAGE AND SALARY EARNERS, AUSTRALIA - SECTOR AND INDUSTRY-Continued

Industry	Number of employees ('000)						Gross earnings
	March 1986	December 1986	January 1987	February 1987		March 1987	March Quarter 1987
	Persons	Persons	Persons	Males	Females	Persons	\$m
TOTAL PUBLIC							
Agriculture, forestry, fishing and hunting	8.6	8.2	8.2	6.9	1.3	8.2	47.6
Mining	7.0	7.8	7.7	7.4	4.4	7.8	62.5
Manufacturing	53.9	50.2	49.8	44.4	6.3	50.8	269.0
Electricity, gas and water	132.2	130.0	130.0	116.9	13.0	129.9	831.7
Construction	49.8	46.0	45.7	40.5	5.4	45.9	258.6
Wholesale and retail trade	5.6	5.4	5.3	3.3	1.9	5.2	26.5
Transport and storage	150.9	149.9	149.4	131.8	16.4	148.2	941.8
Road transport	20.0	20.2	20.5	18.6	1.9	20.4	122.0
Other transport and storage	130.8	129.7	128.9	113.2	14.5	127.7	819.8
Communication	135.1	136.1	136.6	103.2	32.1	135.3	739.9
Finance, property and business services	102.8	103.7	103.4	47.8	56.9	104.7	512.6
Banking	60.5	60.6	61.1	28.2	34.1	62.2	308.3
Non-bank finance and investment	2.4	2.5	2.5	1.4	1.0	2.5	15.9
Insurance and services to insurance	12.9	13.1	13.2	5.1	8.0	13.1	64.2
Property and business services	27.0	27.4	26.6	13.2	13.7	26.9	124.1
Public administration and defence(c)	306.3	311.6	308.1	195.0	117.8	312.8	1,675.7
Community services	755.0	752.2	707.4	309.1	430.6	739.7	4,049.5
Health	275.5	277.3	275.5	275.5	200.0	276.7	1,457.1
Education, museum and library services	367.0	356.7	313.6	146.6	197.7	344.3	1,873.3
Welfare and religious institutions	14.7	16.8	17.0	5.0	12.2	17.2	70.3
Other community services	97.8	101.4	101.2	80.8	20.7	101.5	648.7
Recreation, personal and other services	23.5	24.4	24.6	12.9	12.0	24.9	144.1
Total all industries	1,730.6	1,725.6	1,676.2	1,019.3	693.9	1,713.2	9,559.4
PRIVATE AND PUBLIC							
Mining	90.8	84.4	84.1	77.5	7.2	84.7	720.3
Coal	33.9	33.8	33.8	33.2	1.0	34.2	326.5
Other mining	57.0	50.6	50.3	44.3	6.2	50.5	393.8
Manufacturing	1,061.1	1,054.5	1,036.8	768.9	282.8	1,051.8	5,276.8
Food, beverages and tobacco	177.7	178.9	176.4	124.8	55.4	180.2	887.5
Textiles	31.0	32.4	30.5	18.3	12.5	30.9	140.5
Clothing	64.3	63.3	61.5	14.0	48.2	62.1	206.3
Footwear	12.7	13.2	13.0	5.5	7.7	13.2	47.1
Wood and wood products	46.6	44.8	43.8	38.1	6.0	44.0	186.0
Furniture and mattresses	29.3	31.9	31.1	26.0	6.0	32.0	123.2
Paper and paper products	23.7	24.4	24.2	19.6	4.8	24.4	145.5
Printing and allied industries	83.5	83.7	80.2	52.7	29.0	81.7	408.0
Chemicals	56.3	53.6	53.5	38.0	15.7	53.7	335.3
Petroleum and coal products	5.4	5.3	5.4	4.9	5.5	5.4	42.5
Non-metallic mineral products	42.2	42.6	42.6	37.5	5.3	42.8	250.3
Basic iron and steel	45.8	45.1	45.1	42.1	3.6	45.7	304.4
Other basic metal products	27.4	28.4	28.7	26.2	2.6	28.9	191.5
Fabricated metal products	100.0	95.5	96.5	81.9	16.7	98.6	465.9
Motor vehicles and parts	70.9	66.8	65.2	54.1	11.9	65.9	312.7
Other transport equipment	49.4	45.9	44.3	41.9	2.7	44.6	245.1
Other machinery and equipment	135.9	134.7	132.7	100.4	33.3	133.7	683.9
Miscellaneous manufacturing	59.1	64.0	62.2	43.1	20.9	64.0	301.2

For footnotes see end of table.

TABLE 4. EMPLOYED WAGE AND SALARY EARNERS, AUSTRALIA - SECTOR AND INDUSTRY-Continued

Industry	Number of employees ('000)						Gross earnings	
	March 1986	December 1986	January 1987	February 1987		March 1987	March Quarter 1987	
	Persons	Persons	Persons	Males	Females	Persons	\$m	
PRIVATE AND PUBLIC-continued								
Electricity, gas and water	138.6	136.1	136.2	122.0	14.0	136.0	135.6	871.4
Electricity and gas	92.8	91.3	91.6	81.8	9.7	91.6	91.4	610.9
Water, sewerage and drainage	45.7	44.7	44.6	40.2	4.2	44.4	44.2	260.5
Construction	261.0	253.7	252.7	224.8	37.2	262.0	261.1	1,358.3
Wholesale and retail trade	1,101.0	1,161.4	1,126.2	610.7	524.1	1,134.8	1,132.8	4,272.3
Wholesale trade	362.7	381.7	374.8	263.5	116.2	379.7	378.2	1,986.9
Retail trade	738.4	779.7	751.4	347.3	407.9	755.1	754.6	2,285.4
Motor vehicles, petrol, tyres	173.3	167.7	168.3	133.8	35.1	168.9	169.2	659.0
Other retail trade	565.1	612.0	583.2	213.5	372.8	586.2	585.4	1,626.5
Transport and storage	289.1	293.6	290.4	238.2	52.9	291.1	290.3	1,714.5
Road transport	97.2	100.4	98.7	82.6	18.4	101.0	101.1	508.2
Rail transport	88.0	85.2	84.9	79.0	5.6	84.6	84.2	517.8
Water transport	10.2	9.0	8.5	7.0	1.7	8.6	8.5	63.3
Air transport	28.3	29.6	30.0	20.3	9.6	29.9	30.0	216.0
Other transport and storage	65.3	69.4	68.4	49.3	17.6	66.9	66.4	409.2
Communication	135.5	136.6	137.2	103.4	32.3	135.8	136.7	742.3
Finance, property and business services	636.9	667.6	655.8	316.8	348.0	664.8	666.9	3,248.0
Banking	141.2	142.8	143.8	66.0	79.4	145.3	145.7	696.9
Non-bank finance	38.9	40.9	40.5	16.0	25.1	41.2	41.3	235.3
Investment; services to finance and investment	32.2	37.3	38.9	18.0	21.4	39.4	39.4	216.0
Insurance and services to insurance	67.5	68.7	67.5	31.5	36.7	68.3	68.6	366.1
Property and business services	357.1	377.8	365.2	185.3	185.4	370.7	371.9	1,733.7
Public admin. and defence(c)	306.3	311.6	308.1	195.0	117.8	312.8	313.5	1,675.7
Commonwealth government admin.	82.5	89.1	91.5	48.4	43.8	92.2	92.3	550.3
State government admin.	63.6	64.2	61.9	38.9	24.2	63.1	63.2	386.6
Local government admin.	126.5	125.7	122.7	87.4	38.0	125.4	125.8	563.4
Other public admin. and defence(c)	33.6	32.6	32.0	20.3	11.8	32.1	32.2	175.4
Community services	1,156.7	1,167.5	1,115.7	417.4	746.6	1,164.0	1,198.0	5,680.9
Health	477.7	484.2	482.6	110.6	375.7	486.3	489.5	2,262.1
Education, museum and library services	454.4	441.3	391.2	171.1	259.9	431.0	459.7	2,243.2
Welfare and religious institutions	76.3	84.9	84.2	25.4	62.1	87.5	88.9	264.0
Other community services	148.3	157.2	157.6	110.3	48.9	159.2	159.9	911.6
Recreation, personal and other services(a)	399.7	398.5	396.1	180.8	227.1	407.8	404.1	1,244.5
Entertainment and recreational services	92.8	91.1	90.7	54.8	11.8	96.7	95.4	363.2
Restaurants, hotels; personal services	307.0	307.4	305.4	126.0	185.2	311.2	308.7	881.3
Total all industries(d)	5,585.2	5,673.8	5,547.4	3,262.4	2,391.3	5,653.8	5,683.6	26,852.7

(a) Excludes private households employing staff. (b) Includes employees of private enterprises classified to communication.
(c) Excludes members of permanent defence forces and employees of overseas embassies, consulates etc. (d) Includes employees of government agencies classified to agriculture, forestry, fishing and hunting.

TABLE 5. EMPLOYED WAGE AND SALARY EARNERS, NEW SOUTH WALES - SECTOR AND INDUSTRY

Industry	Number of employees ('000)							Gross earnings
	March 1986	December 1986	January 1987	February 1987		March 1987	March Quarter 1987	
	Persons	Persons	Persons	Males	Females	Persons	\$m	
	PRIVATE							
Mining	24.3	23.1	22.7	21.8	1.0	22.8	22.7	206.9
Manufacturing	354.0	358.3	349.4	254.0	100.6	354.7	353.1	1,849.7
Electricity, gas and water; construction	76.0	75.1	75.7	65.3	12.8	78.1	78.3	422.4
Wholesale and retail trade	381.1	403.3	389.6	211.6	181.3	392.9	391.0	1,557.5
Transport and storage	50.0	47.7	48.4	35.8	13.3	49.0	49.0	278.8
Finance, property and business services	205.9	209.5	211.2	102.5	111.4	214.0	214.8	1,071.1
Banking	29.4	30.3	30.4	13.3	17.1	30.4	30.5	145.2
Non-bank finance, investment and insurance	50.3	49.9	51.9	23.4	29.0	52.4	52.4	306.9
Property and business services	126.3	129.3	128.9	65.8	65.3	131.1	132.0	619.1
Community services	134.5	141.8	137.9	33.8	108.0	141.8	144.6	598.9
Health	71.4	75.6	75.4	13.2	63.2	76.4	77.0	330.0
Education, museum and library services	28.7	29.4	26.7	7.0	21.7	28.7	30.6	126.7
Welfare and other community services	34.4	36.8	35.7	13.6	23.1	36.7	37.0	142.2
Recreation, personal and other services(a)	133.4	138.1	134.1	65.5	72.8	138.3	136.4	421.4
Total all industries(b)	1,359.4	1,397.2	1,369.3	790.4	601.4	1,391.9	1,390.2	6,408.2
	PUBLIC							
Agriculture, forestry, fishing and hunting	2.8	2.7	2.8	2.3	0.5	2.8	2.8	16.1
Mining	3.8	3.8	3.8	3.8	.1	3.8	3.8	36.3
Manufacturing	21.1	20.4	20.4	18.8	1.6	20.4	20.0	114.8
Electricity, gas and water; construction	63.1	62.3	61.8	55.3	6.7	62.1	61.7	385.3
Wholesale and retail trade	1.0	1.0	1.0	.6	.4	1.0	1.0	5.3
Transport and storage	58.1	58.1	57.5	49.8	7.6	57.4	57.1	367.0
Communication	48.9	49.1	50.2	37.4	11.3	48.8	50.0	258.3
Finance, property and business services	43.5	43.8	43.9	17.6	27.0	44.6	44.7	207.0
Banking	25.4	25.3	25.6	11.5	14.5	26.0	26.0	137.6
Non-bank finance, investment and insurance	5.0	5.0	5.1	1.9	3.1	5.1	5.1	25.9
Property and business services	13.1	13.4	13.3	4.2	9.4	13.5	13.6	43.5
Public administration and defence(c)	88.8	91.6	91.0	59.3	32.3	91.6	91.7	482.3
Community services	228.4	220.8	206.9	93.1	127.1	220.2	232.6	1,229.9
Health	80.9	80.0	79.8	22.6	57.3	79.8	80.8	454.9
Education, museum and library services	109.6	99.6	85.9	43.3	55.6	99.0	110.2	554.9
Welfare and other community services	37.8	41.2	41.3	27.2	14.2	41.4	41.6	220.1
Recreation, personal and other services	7.9	8.5	8.9	4.9	4.2	9.1	9.1	59.4
Total all industries	567.3	562.2	548.2	342.9	218.7	561.6	574.5	3,161.7

For footnotes see end of table.

TABLE 5. EMPLOYED WAGE AND SALARY EARNERS, NEW SOUTH WALES - SECTOR AND INDUSTRY-
Continued

Industry	Number of employees ('000)						Gross earnings	
	March 1986	December 1986	January 1987	February 1987		March 1987	March Quarter 1987	
	Persons	Persons	Persons	Males	Females	Persons	\$m	
PRIVATE AND PUBLIC								
Mining	28.1	26.9	26.5	25.5	1.1	26.7	26.5	243.2
Manufacturing	375.1	378.6	369.7	272.8	102.3	375.1	373.1	1,964.5
Food, beverages and tobacco	53.0	56.0	54.4	37.8	17.7	55.5	55.0	289.3
Textiles; clothing and footwear	31.2	33.9	31.7	11.3	21.0	32.3	32.4	118.0
Wood and wood products	14.0	14.0	13.7	11.8	1.9	13.8	13.6	59.1
Furniture and mattresses	8.8	10.9	11.1	9.1	2.3	11.4	11.5	45.4
Paper, paper products, printing and publishing	37.6	36.5	34.9	22.8	12.4	35.2	35.1	190.4
Chemical, petroleum and coal products	26.6	25.8	25.7	17.4	8.4	25.8	25.7	171.1
Non-metallic mineral products	13.3	14.3	14.2	12.2	2.0	14.2	14.3	83.8
Basic metal products	37.2	37.4	37.5	35.0	2.9	37.9	37.5	257.4
Fabricated metal products	36.2	35.8	35.7	29.8	7.0	36.8	36.6	172.0
Motor vehicles and parts	11.6	9.8	9.4	8.1	1.4	9.5	9.6	44.8
Other transport equipment	20.0	18.5	18.5	17.5	1.1	18.6	18.3	102.1
Other machinery and equipment	63.4	61.8	59.7	44.4	15.5	59.9	59.8	314.6
Miscellaneous manufacturing	22.3	23.9	23.2	15.5	8.7	24.2	23.6	116.5
Electricity, gas and water	50.0	49.4	49.2	43.9	5.2	49.1	49.0	317.4
Construction	89.1	88.0	88.3	76.8	14.3	91.0	91.1	490.3
Wholesale and retail trade	382.1	404.3	390.6	212.1	181.7	393.8	392.0	1,562.7
Wholesale trade	134.9	144.4	143.7	96.5	48.7	145.3	144.0	781.6
Retail trade	247.2	259.9	246.9	115.6	133.0	248.5	248.0	781.2
Motor vehicles, petrol, tyres	60.3	59.1	60.7	48.5	12.3	60.7	60.8	237.6
Other retail trade	186.9	200.8	186.2	67.1	120.7	187.8	187.1	543.6
Transport and storage	108.0	105.9	105.9	85.6	20.8	106.4	106.2	645.8
Road transport	34.7	31.9	32.4	26.9	5.9	32.8	32.9	180.2
Other transport and storage	73.3	73.9	73.5	58.6	14.9	73.6	73.2	465.6
Communication	49.0	49.4	50.4	37.6	11.5	49.1	50.3	259.9
Finance, property and business services	249.4	253.3	255.1	120.2	138.5	258.6	259.6	1,278.1
Banking	54.8	55.6	56.0	24.8	31.6	56.5	56.5	282.8
Non-bank finance and investment	28.9	30.9	32.8	14.5	18.7	33.1	32.8	193.3
Insurance and services to insurance	26.4	24.0	24.2	10.8	13.5	24.4	24.6	139.5
Property and business services	139.4	142.7	142.1	70.0	74.7	144.6	145.6	662.6
Public admin. and defence(c)	88.8	91.6	91.0	59.3	32.3	91.6	91.7	482.3
Commonwealth government admin.	16.2	18.4	18.6	8.7	10.1	18.8	18.8	101.4
State government admin.	21.7	19.5	19.2	11.4	7.9	19.3	19.4	113.9
Local government admin.	41.3	42.2	42.1	31.9	10.4	42.3	42.2	209.8
Other public admin. and defence(c)	9.7	11.5	11.2	7.3	3.9	11.2	11.3	57.2
Community services	362.8	362.6	344.8	126.9	235.0	361.9	377.2	1,828.8
Health	152.2	155.6	155.2	35.8	120.4	156.2	157.8	784.9
Education, museum and library services	138.3	129.0	112.6	50.3	77.3	127.6	140.8	681.6
Welfare and other community services	72.3	78.0	77.0	40.8	37.3	78.1	78.6	362.3
Recreation, personal and other services(a)	141.4	146.6	143.0	70.4	77.0	147.4	145.5	430.8
Entertainment and recreational services	35.1	35.3	34.5	22.0	16.2	38.2	35.7	155.9
Restaurants, hotels, personal services	106.2	111.3	108.5	48.4	60.8	109.2	109.8	324.9
Total all industries(d)	1,926.6	1,959.4	1,917.5	1,133.3	820.1	1,953.5	1,964.7	9,569.9

(a)Excludes private households employing staff. (b)Includes employees of private enterprises classified to communication.
(c)Excludes members of permanent defence forces and employees of overseas embassies, consulates etc. (d)Includes employees of government agencies classified to agriculture, forestry, fishing and hunting.

TABLE 6. EMPLOYED WAGE AND SALARY EARNERS, VICTORIA - SECTOR AND INDUSTRY

Industry	Number of employees ('000)						Gross earnings
	March 1986	December 1986	January 1987	February 1987		March 1987	March Quarter 1987
	Persons	Persons	Persons	Males	Females	Persons	\$m
PRIVATE							
Mining	4.8	4.6	4.6	4.1	0.5	4.6	37.6
Manufacturing	350.8	344.5	336.9	234.2	107.1	343.3	1,695.4
Electricity, gas and water; construction	57.5	56.9	56.7	50.3	8.7	59.0	278.4
Wholesale and retail trade	296.7	321.0	313.5	169.9	145.4	315.3	1,218.5
Transport and storage	35.2	36.8	35.5	26.5	9.4	35.9	194.3
Finance, property and business services	153.5	167.1	161.2	82.7	82.5	165.2	826.8
Banking	23.9	23.9	24.0	12.0	12.3	24.2	114.2
Non-bank finance, investment and insurance	35.1	40.7	40.5	19.2	22.2	41.4	228.4
Property and business services	94.6	102.6	96.7	51.5	48.1	99.6	484.3
Community services	110.3	115.9	111.3	29.4	86.9	116.3	427.4
Health	49.1	46.7	46.0	7.3	39.2	46.5	166.9
Education, museum and library services	28.4	29.1	26.9	9.4	20.3	29.7	126.5
Welfare and other community services	32.8	40.1	38.3	12.7	27.4	40.1	134.0
Recreation, personal and other services(a)	101.0	83.8	79.7	39.2	44.8	84.0	236.8
Total all industries(b)	1,109.9	1,130.5	1,099.4	636.3	485.3	1,121.6	4,915.6
PUBLIC							
Agriculture, forestry, fishing and hunting	-	-	-	-	-	-	0.1
Mining	2.0	2.1	2.1	2.1	-	2.1	15.5
Manufacturing	16.3	14.8	14.8	12.5	2.5	15.0	80.7
Electricity, gas and water; construction	48.5	46.7	46.9	42.0	5.0	46.9	310.5
Wholesale and retail trade	1.5	1.5	1.4	.8	.6	1.4	8.6
Transport and storage	34.6	34.3	34.2	29.4	4.0	33.4	236.5
Communication	35.8	35.9	35.8	27.0	8.8	35.8	211.0
Finance, property and business services	21.9	22.2	22.3	10.8	12.0	22.7	111.8
Banking	15.7	16.1	16.2	7.7	9.0	16.7	77.0
Non-bank finance, investment and insurance	2.9	3.0	3.0	1.1	1.8	3.0	14.8
Property and business services	3.3	3.0	3.1	1.9	1.2	3.1	20.0
Public administration and defence(c)	78.2	81.8	80.4	47.5	35.0	82.5	419.3
Community services	203.1	204.4	195.5	83.3	117.9	201.2	1,124.5
Health	80.0	81.9	82.0	22.6	59.8	82.3	418.7
Education, museum and library services	95.8	96.0	87.0	40.8	51.5	92.3	511.5
Welfare and other community services	27.3	26.6	26.5	19.9	6.6	26.5	194.3
Recreation, personal and other services	4.3	4.8	4.8	2.2	2.7	4.9	25.7
Total all industries	446.3	448.6	438.2	257.4	188.7	446.0	2,544.2

For footnotes see end of table.

TABLE 6. EMPLOYED WAGE AND SALARY EARNERS, VICTORIA - SECTOR AND INDUSTRY-Continued

Industry	Number of employees ('000)						Gross earnings	
	March 1986	December 1986	January 1987	February 1987		March 1987	March Quarter 1987	
	Persons	Persons	Persons	Males	Females	Persons	\$m	
PRIVATE AND PUBLIC								
Mining	6.8	6.7	6.7	6.2	0.6	6.7	6.8	53.2
Manufacturing	367.1	359.3	351.7	246.7	109.6	356.3	358.5	1,776.1
Food, beverages and tobacco	52.8	50.0	50.6	35.2	16.5	51.6	52.5	267.0
Textiles; clothing and footwear	59.8	58.3	57.5	20.2	37.7	57.9	58.3	220.2
Wood and wood products	11.3	10.6	10.1	8.6	1.6	10.2	10.4	43.0
Furniture and mattresses	8.2	8.6	8.7	7.1	1.9	9.0	9.0	34.8
Paper, paper products, printing and publishing	35.2	36.7	34.8	24.5	11.0	35.5	35.7	188.0
Chemical, petroleum and coal products	24.1	21.4	20.9	15.7	5.3	21.0	21.1	133.9
Non-metallic mineral products	11.8	12.3	12.5	10.9	1.6	12.4	12.5	74.5
Basic metal products	12.0	12.2	12.2	10.8	1.6	12.4	12.2	79.0
Fabricated metal products	31.3	29.9	29.1	24.4	5.0	29.5	29.6	141.6
Motor vehicles and parts	40.9	39.6	38.8	30.6	8.6	39.2	39.6	187.5
Other transport equipment	14.9	13.3	12.0	11.3	1.0	12.3	12.3	71.5
Other machinery and equipment	43.2	42.4	41.2	30.8	10.7	41.6	41.8	218.9
Miscellaneous manufacturing	21.6	23.9	23.5	16.7	7.1	23.8	23.6	116.3
Electricity, gas and water	39.8	39.1	39.4	35.3	4.2	39.5	39.4	266.3
Construction	66.2	64.4	64.2	57.0	9.5	66.5	65.6	322.6
Wholesale and retail trade	298.2	322.5	314.9	170.7	146.0	316.7	318.9	1,227.1
Wholesale trade	106.6	112.9	109.0	76.5	34.2	110.7	110.9	605.6
Retail trade	191.7	209.6	205.9	94.3	111.8	206.0	208.0	621.5
Motor vehicles, petrol, tyres	35.3	36.4	36.9	29.8	7.0	36.8	37.1	145.9
Other retail trade	156.4	173.2	169.0	64.4	104.8	169.2	170.9	475.7
Transport and storage	69.8	71.0	69.7	55.9	13.4	69.3	69.3	430.8
Road transport	24.6	25.7	24.8	21.1	4.2	25.4	25.5	127.3
Other transport and storage	45.2	45.3	44.9	34.7	9.2	43.9	43.8	303.5
Communication	35.8	36.0	35.9	27.1	8.9	35.9	36.0	211.3
Finance, property and business services	175.5	189.3	183.5	93.4	94.5	188.0	188.6	938.6
Banking	39.6	40.0	40.1	19.7	21.3	41.0	41.2	191.2
Non-bank finance and investment	17.7	20.9	20.6	8.8	12.2	21.0	21.1	122.2
Insurance and services to insurance	20.4	22.8	23.0	11.5	11.8	23.3	23.2	121.0
Property and business services	97.8	105.6	99.8	53.5	49.2	102.7	103.1	504.3
Public admin. and defence(c)	78.2	81.8	80.4	47.5	35.0	82.5	82.7	419.3
Commonwealth government admin.	13.5	14.2	15.2	7.9	7.4	15.3	15.2	88.1
State government admin.	16.1	18.5	18.3	11.9	6.5	18.4	18.4	122.2
Local government admin.	39.6	40.4	38.3	22.3	18.0	40.2	40.5	161.9
Other public admin. and defence(c)	8.9	8.7	8.5	5.3	3.2	8.5	8.5	47.0
Community services	313.3	320.3	306.7	112.7	204.8	317.5	324.0	1,551.9
Health	129.1	128.6	128.0	29.9	98.9	128.8	129.7	585.6
Education, museum and library services	124.1	125.1	113.9	50.3	71.8	122.1	126.4	638.0
Welfare and other community services	60.1	66.6	64.9	32.6	34.1	66.6	67.9	328.3
Recreation, personal and other services(a)	105.3	88.6	84.5	41.4	47.5	88.9	90.0	262.5
Entertainment and recreational services	26.3	22.5	22.5	14.7	9.6	24.4	25.3	74.5
Restaurants, hotels; personal services	79.0	66.1	62.0	26.6	37.8	64.5	64.7	187.9
Total all industries(d)	1,556.2	1,579.1	1,537.6	893.7	674.0	1,567.7	1,579.7	7,459.7

(a) Excludes private households employing staff. (b) Includes employees of private enterprises classified to communication.

(c) Excludes members of permanent defence force and employees of overseas embassies, consulates etc. (d) Includes employees of government agencies classified to agriculture, forestry, fishing and hunting.

TABLE 7. EMPLOYED WAGE AND SALARY EARNERS, QUEENSLAND - SECTOR AND INDUSTRY

Industry	Number of employees ('000)							Grass
	March 1986	December 1986	January 1987	February 1987		March 1987	March Quarter 1987	
	Persons	Persons	Persons	Males	Females	Persons	Persons	\$m
PRIVATE								
Mining	20.2	18.2	17.6	16.7	1.3	18.0	17.8	166.8
Manufacturing	113.1	112.3	113.7	90.3	25.8	116.1	116.1	542.0
Electricity, gas and water; construction	38.7	35.9	35.8	33.6	4.7	38.4	38.6	189.8
Wholesale and retail trade	174.5	174.8	170.7	90.8	80.5	171.3	169.7	586.6
Transport and storage	21.0	22.5	22.0	16.9	5.8	22.7	22.6	109.5
Finance, property and business services	63.3	66.6	64.0	29.9	33.4	63.3	62.8	283.7
Banking	12.3	12.5	12.5	5.5	7.0	12.6	12.6	55.5
Non-bank finance, investment and insurance	14.1	13.2	12.7	5.5	7.2	12.8	12.8	66.3
Property and business services	36.9	40.9	38.8	18.8	19.1	38.0	37.4	161.9
Community services	60.7	58.5	59.6	15.9	47.0	62.9	63.4	225.2
Health	29.2	30.7	32.0	5.1	27.2	32.3	32.3	112.4
Education, museum and library services	14.2	11.2	10.7	3.9	9.5	13.4	13.7	53.0
Welfare and other community services	17.3	16.7	16.9	6.9	10.3	17.1	17.4	59.8
Recreation, personal and other services(a)	56.5	57.9	59.7	24.6	35.2	59.8	59.8	163.8
Total all industries(b)	548.1	546.8	543.1	318.7	233.7	552.5	550.9	2,267.5
PUBLIC								
Agriculture, forestry, fishing and hunting	2.6	2.5	2.4	2.1	0.4	2.4	2.4	13.3
Mining	-	.6	.6	.4	.1	.5	.6	2.4
Manufacturing	7.6	6.2	5.8	5.7	.9	6.6	6.7	33.4
Electricity, gas and water; construction	25.9	25.0	25.0	22.0	2.8	24.8	24.7	149.6
Wholesale and retail trade	2.0	2.0	2.0	1.5	.6	2.0	2.0	8.8
Transport and storage	29.8	29.4	29.8	27.5	2.2	29.6	29.6	173.4
Communication	22.1	22.5	22.5	17.4	5.0	22.4	22.4	118.1
Finance, property and business services	13.4	13.2	12.6	6.4	6.2	12.6	12.6	65.5
Banking	6.5	6.3	6.4	2.9	3.6	6.4	6.4	32.6
Non-bank finance, investment and insurance	3.3	3.3	3.2	1.4	1.8	3.2	3.2	15.7
Property and business services	3.7	3.6	3.0	2.1	.9	3.0	3.0	17.2
Public administration and defence(c)	43.3	41.4	41.4	29.2	13.4	42.6	42.7	209.2
Community services	110.6	111.0	105.3	46.5	62.1	108.6	112.1	591.5
Health	38.1	37.7	36.4	11.0	25.5	36.5	36.8	183.2
Education, museum and library services	55.5	56.3	51.2	21.3	33.0	54.4	57.5	310.6
Welfare and other community services	17.0	17.0	17.6	14.1	3.6	17.7	17.8	97.6
Recreation, personal and other services	2.3	2.3	2.2	1.0	1.2	2.2	2.2	12.0
Total all industries	259.6	256.2	249.5	159.7	94.8	254.5	258.0	1,377.1

For footnotes see end of table.

TABLE 7. EMPLOYED WAGE AND SALARY EARNERS, QUEENSLAND - SECTOR AND INDUSTRY - Continued

Industry	Number of employees ('000)							Gross earnings
	March 1986	December 1986	January 1987	February 1987			March 1987	March Quarter 1987
	Persons	Persons	Persons	Males	Females	Persons	Persons	\$m
PRIVATE AND PUBLIC								
Mining	20.2	18.8	18.1	17.2	1.4	18.5	18.4	169.1
Coal	10.4	10.1	10.0	9.9	.5	10.4	10.4	104.3
Other mining	9.8	8.7	8.1	7.3	.9	8.1	8.0	64.9
Manufacturing	120.7	118.5	119.4	96.0	26.7	122.8	122.9	575.4
Food, beverages and tobacco	34.2	32.4	32.6	24.8	9.3	34.1	34.5	151.6
Textiles; clothing and footwear	5.2	5.0	4.4	1.5	3.0	4.4	4.6	15.5
Wood and wood products	7.4	6.6	6.6	5.7	.9	6.6	6.6	26.0
Furniture and mattresses	4.9	5.6	5.0	4.7	.6	5.3	5.2	19.8
Paper, paper products, printing and publishing	11.7	11.6	11.5	8.4	3.7	12.1	12.3	57.3
Chemical, petroleum and coal products	3.9	4.4	5.2	3.8	1.3	5.1	5.3	27.9
Non-metallic mineral products	7.1	6.8	6.7	6.2	.8	6.9	6.9	39.1
Basic metal products	6.7	6.5	6.7	6.5	.5	6.9	7.0	45.1
Fabricated metal products	13.4	12.7	14.0	12.1	2.1	14.3	14.0	66.6
Motor vehicles and parts	4.4	3.8	3.4	3.2	.4	3.6	3.6	14.9
Other transport equipment	8.3	8.3	8.2	7.9	.4	8.3	8.3	44.1
Other machinery and equipment	8.7	9.1	9.9	7.5	2.0	9.5	9.5	45.1
Miscellaneous manufacturing	5.0	5.7	5.3	3.8	1.8	5.6	5.1	22.3
Electricity, gas and water	18.1	17.7	17.6	15.5	1.9	17.4	17.2	108.3
Construction	46.5	43.2	43.2	40.2	5.7	45.8	46.1	231.0
Wholesale and retail trade	176.5	176.9	172.7	92.3	81.0	173.3	171.7	595.4
Wholesale trade	51.9	53.3	52.0	38.7	14.4	53.1	53.0	244.3
Retail trade	124.6	123.6	120.7	53.6	66.6	120.2	118.7	351.1
Motor vehicles, petrol, tyres	30.2	29.0	28.3	22.0	6.5	28.5	28.3	108.6
Other retail trade	94.4	94.6	92.4	31.6	60.1	91.8	90.4	242.5
Transport and storage	50.8	51.9	51.8	44.4	8.0	52.4	52.2	283.0
Road transport	14.5	15.6	15.6	12.9	3.4	16.3	16.1	69.3
Other transport and storage	36.3	36.3	36.2	31.5	4.6	36.1	36.0	213.6
Communication	22.1	22.5	22.5	17.4	5.1	22.5	22.4	118.2
Finance, property and business services	76.8	79.9	76.6	36.3	39.6	75.9	75.4	349.2
Banking	18.8	18.8	18.9	8.4	10.6	19.0	19.0	88.1
Non-bank finance and investment	9.6	9.3	8.4	3.8	4.7	3.4	8.5	44.4
Insurance and services to insurance	7.8	7.2	7.5	3.2	4.3	7.5	7.6	37.6
Property and business services	40.6	44.6	41.8	20.9	20.0	40.9	40.3	179.1
Public admin. and defence(c)	43.3	41.4	41.4	29.2	13.4	42.6	42.7	209.2
Commonwealth government admin.	8.4	8.6	9.4	4.6	4.9	9.4	9.5	51.0
State government admin.	9.4	8.9	8.4	5.6	3.7	9.4	9.4	50.5
Local government admin.	22.4	20.8	20.5	17.1	3.6	20.7	20.7	91.2
Other public admin. and defence(c)	3.1	3.1	3.1	1.9	1.2	3.1	3.1	16.6
Community services	171.2	169.5	164.9	62.4	109.1	171.4	175.5	816.6
Health	67.3	68.4	68.5	16.1	52.6	68.8	69.1	295.7
Education, museum and library services	69.7	67.5	61.9	25.2	42.5	67.8	71.2	363.6
Welfare and other community services	34.2	33.7	34.5	21.0	13.9	34.8	35.2	157.3
Recreation, personal and other services(a)	58.7	60.1	61.9	25.6	36.4	62.0	62.0	175.8
Entertainment and recreational services	9.0	10.4	9.6	5.5	4.0	9.5	10.0	32.9
Restaurants, hotels; personal services	49.7	49.7	52.2	20.1	32.4	52.5	52.0	142.9
Total all industries(d)	807.6	803.0	792.7	478.5	328.5	807.0	808.9	3,644.6

(a) Excludes private households employing staff. (b) Includes employees of private enterprises classified to communication. (c) Excludes members of permanent defence forces and employees of overseas embassies, consulates etc. (d) Includes employees of government agencies classified to agriculture, forestry, fishing and hunting.

TABLE 8. EMPLOYED WAGE AND SALARY EARNERS, SOUTH AUSTRALIA - SECTOR AND INDUSTRY

Industry	Number of employees ('000)						Gross earnings	
	March 1986	December 1986	January 1987	February 1987		March 1987	March Quarter 1987	
	Persons	Persons	Persons	Males	Females	Persons	\$m	
PRIVATE								
Mining	4.7	3.9	3.9	3.3	0.6	3.9	29.4	
Manufacturing	94.2	91.3	90.4	68.6	22.8	91.4	430.5	
Electricity, gas and water; construction	16.1	14.8	14.8	13.1	2.0	15.2	76.2	
Wholesale and retail trade	88.0	97.8	89.9	49.2	41.3	90.5	317.1	
Transport and storage	9.2	11.6	11.1	8.5	2.4	10.9	54.3	
Finance, property and business services	39.4	43.6	40.8	17.6	23.2	40.8	179.1	
Banking	5.4	5.6	5.6	2.6	3.1	5.6	24.3	
Non-bank finance, investment and insurance	9.2	11.3	9.3	4.0	5.5	9.5	9.8	
Property and business services	24.8	26.7	25.9	10.9	14.6	25.6	109.1	
Community services	37.4	36.7	37.5	10.7	27.9	38.7	144.9	
Health	21.3	22.0	22.9	3.4	19.8	23.2	22.8	
Education, museum and library services	5.8	5.4	5.0	1.7	3.8	5.5	24.8	
Welfare and other community services	10.3	9.4	9.7	5.5	4.4	9.9	37.2	
Recreation, personal and other services(a)	28.6	29.4	30.0	12.1	18.4	30.5	89.2	
Total all industries(b)	317.5	329.2	318.5	183.1	138.7	321.8	322.8	1,320.7
PUBLIC								
Agriculture, forestry, fishing and hunting	0.6	0.7	0.7	0.6	0.1	0.7	3.7	
Mining	1.1	1.2	1.2	1.0	.2	1.2	8.0	
Manufacturing	4.3	4.1	4.1	3.6	.4	4.1	17.8	
Electricity, gas and water; construction	14.9	14.7	14.7	13.5	1.3	14.8	83.3	
Wholesale and retail trade	.2	.3	.3	.1	.1	.2	1.2	
Transport and storage	11.1	11.5	11.5	10.6	.9	11.5	65.8	
Communication	11.0	11.0	11.0	8.4	2.4	10.8	58.8	
Finance, property and business services	9.0	9.1	9.2	4.9	4.3	9.2	48.1	
Banking	5.6	5.5	5.6	2.8	2.8	5.7	27.0	
Non-bank finance, investment and insurance	1.1	1.2	1.2	.6	.6	1.2	6.4	
Property and business services	2.3	2.3	2.3	1.5	.8	2.3	14.7	
Public administration and defence(c)	23.3	20.0	20.1	12.8	7.4	20.2	108.6	
Community services	74.1	78.9	70.6	31.2	45.1	76.3	377.6	
Health	28.7	29.0	29.0	7.4	21.9	29.3	146.4	
Education, museum and library services	35.8	37.1	28.9	14.1	20.1	34.1	155.9	
Welfare and other community services	9.6	12.8	12.8	9.7	3.1	12.8	75.3	
Recreation, personal and other services	3.6	3.4	3.3	1.6	1.8	3.4	17.4	
Total all industries	153.3	154.9	146.7	88.3	63.9	152.3	154.4	790.1

For footnotes see end of table.

TABLE 8. EMPLOYED WAGE AND SALARY EARNERS, SOUTH AUSTRALIA - SECTOR AND INDUSTRY - Continued

Industry	Number of employees ('000)							Gross earnings
	March 1986	December 1986	January 1987	February 1987			March 1987	March Quarter 1987
	Persons	Persons	Persons	Males	Females	Persons	Persons	\$m
PRIVATE AND PUBLIC								
Mining	5.8	5.1	5.1	4.4	0.7	5.1	5.0	37.3
Manufacturing	98.5	95.3	94.5	72.2	23.3	95.5	95.5	448.3
Food, beverages and tobacco	19.3	18.8	18.8	13.3	5.4	18.7	19.0	86.7
Textiles: clothing and footwear	7.0	7.0	6.9	2.7	4.2	6.9	7.0	24.6
Wood and wood products	5.0	4.8	4.7	4.1	.7	4.7	4.7	19.8
Furniture and mattresses	2.9	2.0	1.8	1.5	.3	1.8	1.9	6.0
Paper, paper products, printing and publishing	8.2	7.7	7.7	5.4	2.4	7.8	7.8	37.9
Chemical, petroleum and coal products	3.0	3.1	3.0	2.3	.6	3.0	2.9	17.7
Non-metallic mineral products	3.7	3.3	3.2	2.9	.3	3.2	3.2	19.4
Basic metal products	7.7	7.5	7.6	7.0	.6	7.6	7.6	47.5
Fabricated metal products	7.4	7.8	7.9	6.5	1.5	8.0	8.1	32.7
Motor vehicles and parts	12.0	11.6	11.6	10.5	1.2	11.7	11.7	57.4
Other transport equipment	2.3	2.1	1.9	1.9	.1	2.0	1.8	8.4
Other machinery and equipment	13.0	13.2	12.6	9.5	3.5	13.0	12.9	58.5
Miscellaneous manufacturing	7.0	6.4	7.0	4.5	2.4	7.0	7.0	31.8
Electricity, gas and water	11.2	11.1	11.1	10.2	.9	11.1	11.2	62.6
Construction	19.8	18.4	18.4	16.4	2.3	18.8	19.1	97.0
Wholesale and retail trade	88.2	98.1	90.1	49.4	41.3	90.7	90.7	318.2
Wholesale trade	28.5	29.6	27.2	20.1	7.2	27.3	26.9	131.6
Retail trade	59.7	68.5	62.9	29.3	34.2	63.4	63.8	186.6
Motor vehicles, petrol, tyres	15.9	13.7	13.0	10.2	3.0	13.2	13.3	47.1
Other retail trade	43.9	54.8	50.0	19.0	31.2	50.2	50.5	139.4
Transport and storage	20.2	23.1	22.6	19.0	3.3	22.4	22.2	120.0
Road transport	8.6	9.7	9.5	8.0	1.6	9.5	9.5	46.2
Other transport and storage	11.6	13.4	13.2	11.1	1.8	12.9	12.7	73.8
Communication	11.1	11.1	11.1	8.4	2.4	10.9	10.8	59.0
Finance, property and business services	48.4	52.7	50.0	22.5	27.5	50.0	50.5	227.1
Banking	11.0	11.1	11.3	5.4	5.9	11.3	11.3	51.2
Non-bank finance and investment	5.5	6.0	5.9	2.3	3.8	6.1	6.2	28.2
Insurance and services to insurance	4.8	6.5	4.6	2.3	2.4	4.7	4.8	23.9
Property and business services	27.1	29.1	28.2	12.5	15.4	27.9	28.2	123.8
Public admin. and defence(c)	23.3	20.0	20.1	12.8	7.4	20.2	20.1	108.6
Commonwealth government admin.	5.5	5.8	5.8	3.3	2.5	5.8	5.9	32.7
State government admin.	4.6	4.4	4.5	2.7	1.8	4.6	4.5	28.4
Local government admin.	8.5	8.2	8.0	5.8	2.3	8.1	8.1	38.2
Other public admin. and defence(c)	4.8	1.6	1.7	.9	.8	1.7	1.7	9.3
Community services	111.6	115.6	108.2	41.9	73.0	114.9	117.2	522.5
Health	50.0	51.0	51.8	10.8	41.7	52.6	52.2	229.3
Education, museum and library services	41.7	42.5	33.9	15.8	23.8	39.7	41.9	180.7
Welfare and other community services	19.8	22.1	22.4	15.3	7.5	22.7	23.0	112.5
Recreation, personal and other services(a)	32.2	32.9	33.3	13.6	20.2	33.8	34.0	106.6
Entertainment and recreational services	8.1	7.7	8.0	4.1	3.8	7.9	7.8	36.0
Restaurants, hotels; personal services	24.1	25.2	25.3	9.5	16.4	25.9	26.2	70.6
Total all industries(d)	470.9	484.1	465.2	271.4	202.6	474.0	477.2	2,110.8

(a) Excludes private households employing staff. (b) Includes employees of private enterprises classified to communication.
 (c) Excludes members of permanent defence force and employees of overseas embassies, consulates etc. (d) Includes employees of government agencies classified to agriculture, forestry, fishing and hunting.

TABLE 9. EMPLOYED WAGE AND SALARY EARNERS, WESTERN AUSTRALIA - SECTOR AND INDUSTRY

Industry	Number of employees ('000)							Gross earnings
	March 1986	December 1986	January 1987	February 1987		March 1987	March Quarter 1987	
	Persons	Persons	Persons	Males	Females	Persons	Persons	
PRIVATE								
Mining	24.7	22.0	22.5	19.5	3.0	22.5	22.2	179.8
Manufacturing	66.0	68.3	67.6	54.0	14.1	68.1	68.5	339.9
Electricity, gas and water; construction	17.5	20.1	19.8	18.1	2.9	21.0	20.4	119.6
Wholesale and retail trade	103.1	105.7	105.3	56.7	50.1	106.8	105.2	369.7
Transport and storage	16.3	18.6	18.1	13.7	4.4	18.0	18.0	104.9
Finance, property and business services	46.4	49.0	47.9	23.8	25.6	49.4	49.8	256.4
Banking	5.9	5.9	6.0	2.6	3.4	6.0	6.0	31.8
Non-bank finance, investment and insurance	10.5	11.2	11.6	4.9	7.0	11.8	12.0	66.2
Property and business services	30.0	32.0	30.3	16.3	15.2	31.5	31.7	158.4
Community services	35.9	35.3	33.1	7.9	27.0	34.9	34.2	124.8
Health	22.3	21.7	20.6	3.4	17.6	21.0	21.1	73.3
Education, museum and library services	6.2	5.6	4.6	1.3	3.9	5.2	5.0	20.4
Welfare and other community services	7.4	7.9	7.9	3.2	5.5	8.7	8.0	31.2
Recreation, personal and other services(a)	36.6	46.2	49.2	18.6	32.1	50.7	47.9	132.5
Total all industries(b)	346.5	365.2	363.5	212.3	159.2	371.5	366.1	1,627.7
PUBLIC								
Agriculture, forestry, fishing and hunting	1.7	1.5	1.4	1.1	0.2	1.4	1.4	9.3
Mining	.1	.1	.1	.1	-	.1	.1	.3
Manufacturing	3.2	3.3	3.3	2.8	.4	3.3	3.2	15.1
Electricity, gas and water; construction	16.3	16.0	15.9	14.4	1.5	15.9	15.8	94.3
Wholesale and retail trade	.6	.3	.3	.2	.1	.3	.3	1.7
Transport and storage	10.6	10.5	10.4	9.4	1.0	10.3	10.2	61.2
Communication	10.4	10.5	10.2	7.8	2.5	10.3	10.3	56.2
Finance, property and business services	9.1	9.0	9.0	4.4	4.7	9.0	9.1	44.1
Banking	5.4	5.5	5.5	2.3	3.2	5.5	5.6	25.0
Non-bank finance, investment and insurance	1.2	1.3	1.3	.5	.8	1.3	1.3	6.2
Property and business services	2.5	2.3	2.2	1.5	.7	2.2	2.2	12.9
Public administration and defence(c)	24.5	25.0	23.3	15.1	8.4	23.5	23.7	120.2
Community services	80.7	78.0	75.4	32.0	47.1	79.0	82.0	416.5
Health	29.5	29.9	29.8	8.5	21.5	30.0	30.3	156.5
Education, museum and library services	39.8	36.2	34.3	15.1	22.4	37.5	40.0	191.2
Welfare and other community services	11.4	11.9	11.4	8.4	3.1	11.5	11.7	68.8
Recreation, personal and other services	2.1	2.1	2.1	1.1	1.0	2.1	2.0	11.2
Total all industries	159.4	156.4	151.5	88.4	67.0	155.3	158.2	830.2

For footnotes see end of table.

TABLE 9. EMPLOYED WAGE AND SALARY EARNERS, WESTERN AUSTRALIA - SECTOR AND INDUSTRY-Continued

Industry	Number of employees ('000)						Gross earnings	
	March 1986	December 1986	January 1987	February 1987		March 1987	March Quarter 1987	
	Persons	Persons	Persons	Males	Females	Persons	\$m	
PRIVATE AND PUBLIC								
Mining	24.8	22.1	22.6	19.6	3.0	22.6	22.3	180.1
Manufacturing	69.1	71.6	70.9	56.9	14.5	71.4	71.7	355.1
Food, beverages and tobacco	11.8	15.2	14.1	9.8	4.6	14.3	14.6	66.3
Textiles; clothing and footwear	2.8	2.6	2.4	1.1	1.4	2.5	2.4	8.8
Wood and wood products	5.2	4.9	5.1	4.5	.5	5.1	5.0	20.7
Furniture and mattresses	3.7	4.0	3.8	3.0	.8	3.7	3.8	14.4
Paper, paper products, printing and publishing	7.6	8.3	8.3	5.2	2.9	8.0	8.2	38.2
Chemical, petroleum and coal products	3.2	3.3	3.3	2.9	.5	3.4	3.5	21.6
Non-metallic mineral products	5.0	4.6	4.5	4.0	.6	4.6	4.5	25.0
Basic metal products	5.4	5.9	5.9	5.6	.4	5.9	5.9	39.6
Fabricated metal products	9.5	7.0	7.7	7.1	.7	7.9	7.7	43.2
Transport equipment	5.1	4.7	4.7	4.2	.3	4.6	4.5	23.2
Other machinery and equipment	7.1	7.4	8.1	7.3	1.2	8.5	8.3	41.0
Miscellaneous manufacturing	2.7	3.8	2.9	2.3	.7	3.0	3.1	13.0
Electricity, gas and water	11.7	11.3	11.3	10.3	1.0	11.3	11.2	69.7
Construction	22.1	24.9	24.4	22.2	3.4	25.6	25.0	144.3
Wholesale and retail trade	103.7	106.0	105.6	56.9	50.2	107.1	105.5	371.4
Wholesale trade	28.6	28.7	29.1	21.3	8.1	29.4	29.4	147.5
Retail trade	75.2	77.3	76.5	35.6	42.1	77.7	76.1	223.9
Motor vehicles, petrol, tyres	19.5	19.4	19.1	14.3	4.9	19.2	18.9	76.8
Other retail trade	55.6	57.9	57.4	21.3	37.2	58.6	57.2	147.1
Transport and storage	26.9	29.0	28.6	23.1	5.3	28.4	28.2	166.0
Road transport	9.0	11.6	11.2	8.9	2.6	11.5	11.6	58.5
Other transport and storage	17.9	17.4	17.3	14.1	2.7	16.9	16.6	107.6
Communication	10.5	10.5	10.3	7.8	2.6	10.4	10.3	56.3
Finance, property and business services	55.5	58.1	56.9	28.2	30.3	58.4	58.9	300.5
Banking	11.3	11.4	11.4	4.9	6.6	11.6	11.6	56.8
Non-bank finance and investment	6.4	7.1	7.5	3.0	4.6	7.6	7.8	44.0
Insurance and ass. cos. / insurance	5.4	5.4	5.4	2.4	3.1	5.5	5.5	28.3
Property and business services	32.4	34.2	32.5	17.8	15.9	33.7	33.9	171.4
Public admin. and defence(c)	24.5	25.0	23.3	15.1	8.4	23.5	23.7	120.2
Commonwealth government admin.	6.2	6.4	6.5	3.4	3.1	6.5	6.4	33.9
State government admin.	6.2	6.9	5.4	3.4	2.0	5.4	5.5	34.5
Local government admin.	10.7	10.2	10.0	7.4	2.8	10.2	10.4	43.6
Other public admin. and defence(c)	1.4	1.5	1.4	.9	.6	1.5	1.4	8.2
Community services	116.6	113.3	108.5	39.9	74.1	114.0	116.2	541.3
Health	51.8	51.7	50.4	11.8	39.2	51.0	51.4	229.8
Education, museum and library services	46.0	41.8	38.9	16.4	26.3	42.7	45.1	211.5
Welfare and other community services	18.8	19.8	19.3	11.6	8.6	20.2	19.7	100.0
Recreation, personal and other services(a)	38.7	48.3	51.3	19.8	33.1	52.8	49.9	143.7
Entertainment and recreational services	7.6	8.9	9.9	4.6	5.7	10.3	10.2	32.8
Restaurants, hotels; personal services	31.1	39.4	41.4	15.2	27.4	42.6	39.7	110.9
Total all industries(d)	505.9	521.5	515.1	300.7	226.2	526.9	524.3	2,457.9

(a)Excludes private households employing staff. (b)Includes employees of private enterprises classified to communication.
(c)Excludes members of permanent defence forces and employees of overseas embassies, consulates etc. (d)Includes employees of government agencies classified to agriculture, forestry, fishing and hunting.

TABLE 10. EMPLOYED WAGE AND SALARY EARNERS, TASMANIA - SECTOR AND INDUSTRY

Industry	Number of employees ('000)						March 1987	March Quarter 1987	Gross earnings \$m
	March 1986	December 1986	January 1987	February 1987		Persons			
	Persons	Persons	Persons	Males	Females	Persons	Persons	\$m	
PRIVATE									
Mining	3.1	3.1	3.2	3.0	0.2	3.2	3.1	23.6	
Manufacturing	24.1	24.5	23.7	19.3	4.8	24.1	24.0	119.7	
Electricity, gas and water; construction	4.6	4.3	4.5	4.1	.6	4.7	4.8	19.9	
Wholesale and retail trade	25.4	26.9	26.0	14.6	11.7	26.2	26.7	91.4	
Transport and storage	3.7	3.8	3.7	3.2	.7	3.9	4.0	19.1	
Finance, property and business services	11.8	14.0	14.4	6.3	7.9	14.2	14.4	59.8	
Banking	2.2	2.3	2.3	1.0	1.3	2.3	2.3	10.1	
Non-bank finance, investment and insurance	2.0	2.3	2.2	.9	1.3	2.2	2.2	10.4	
Property and business services	7.6	9.5	9.9	4.3	5.4	9.7	9.9	39.3	
Community services	10.9	12.0	11.9	3.1	8.9	12.1	12.5	42.6	
Health	5.6	6.3	6.4	.7	5.6	6.4	6.4	24.2	
Education, museum and library services	2.5	2.4	2.2	.8	1.7	2.5	2.7	10.2	
Welfare and other community services	2.8	3.3	3.2	1.6	1.6	3.2	3.4	8.2	
Recreation, personal and other services(a)	10.1	9.4	10.2	3.7	6.9	10.5	10.5	28.2	
Total all industries(b)	93.7	98.0	97.6	57.3	41.6	98.9	99.9	404.4	
PUBLIC									
Agriculture, forestry, fishing and hunting	0.8	0.8	0.8	0.7	0.1	0.8	0.8	4.6	
Manufacturing	.1	.1	.1	.1	-	.1	.1	.6	
Electricity, gas and water; construction	7.8	7.6	7.6	6.9	.6	7.5	7.5	44.1	
Wholesale and retail trade	.2	.2	.2	.1	.1	.2	.2	.8	
Transport and storage	3.0	2.9	2.8	2.6	.2	2.8	2.8	16.8	
Communication	3.4	3.4	3.4	2.6	.8	3.4	3.4	18.3	
Finance, property and business services	2.4	2.3	2.4	1.5	.8	2.4	2.4	11.8	
Banking	.8	.8	.8	.4	.4	.8	.8	3.8	
Non-bank finance, investment and insurance	.5	.5	.5	.3	.3	.5	.5	2.8	
Property and business services	1.2	1.1	1.1	.9	.2	1.1	1.1	5.2	
Public administration and defence(c)	7.8	8.2	8.3	5.7	2.7	8.4	8.4	43.4	
Community services	25.7	27.1	23.5	9.7	13.6	23.4	26.0	121.9	
Health	10.0	10.3	10.2	2.6	7.5	10.1	10.5	50.0	
Education, museum and library services	12.0	13.6	10.3	4.8	5.3	10.1	12.5	52.6	
Welfare and other community services	3.6	3.1	3.1	2.3	.8	3.1	3.1	19.3	
Recreation, personal and other services	.9	.9	.9	.6	.3	.9	.9	6.5	
Total all industries	52.1	53.5	49.9	30.6	19.3	49.9	52.5	268.7	

For footnotes see end of table.

TABLE 10. EMPLOYED WAGE AND SALARY EARNERS, TASMANIA - SECTOR AND INDUSTRY-Continued

Industry	Number of employees ('000)							Gross earnings
	March 1986	December 1986	January 1987	February 1987		March 1987	March Quarter 1987	
	Persons	Persons	Persons	Males	Females	Persons	Persons	\$m
PRIVATE AND PUBLIC								
Mining	3.1	3.1	3.2	3.0	0.2	3.2	3.1	23.6
Manufacturing	24.2	24.7	23.8	19.4	4.9	24.2	24.2	120.3
Food, beverages and tobacco	5.9	5.7	5.1	3.4	1.7	5.1	5.1	22.5
Textiles; clothing and footwear	1.9	2.0	1.9	.9	1.1	2.0	2.0	6.4
Wood; wood products and furniture	3.7	3.8	3.7	3.4	.3	3.7	3.7	17.0
Paper, paper products, printing and publishing	5.1	5.2	5.3	4.5	.8	5.3	5.3	30.6
Chemical, petroleum and coal products	.9	.8	.8	.8	.1	.9	.8	5.6
Non-metallic mineral products	.9	.9	.9	.8	.1	.9	.9	4.8
Basic metal products	3.3	3.1	2.9	2.8	.1	3.0	3.0	19.7
Fabricated metal products	1.2	1.4	1.4	1.3	.2	1.4	1.5	5.9
Transport equipment	.7	.7	.8	.6	.1	.8	.8	3.3
Other manufacturing	.6	.9	1.1	.7	.4	1.1	1.2	4.6
Electricity, gas and water	5.8	5.5	5.5	5.1	.4	5.5	5.4	33.3
Construction	6.6	6.4	6.5	5.9	.8	6.7	6.8	30.7
Wholesale and retail trade	25.6	27.1	26.2	14.7	11.7	26.4	26.9	92.2
Wholesale trade	7.6	7.7	7.9	6.1	1.9	8.0	8.0	36.6
Retail trade	17.9	19.4	18.4	8.6	9.8	18.4	18.9	55.6
Motor vehicles, petrol, tyres	4.1	3.7	3.9	3.3	.6	3.9	4.1	15.9
Other retail trade	13.9	15.7	14.4	5.3	9.2	14.5	14.8	39.7
Transport and storage	6.7	6.8	6.5	5.8	.9	6.7	6.8	35.8
Road transport	2.6	2.7	2.5	2.4	.3	2.7	2.8	12.1
Other transport and storage	4.2	4.1	3.9	3.4	.6	4.0	4.0	23.7
Communication	3.4	3.4	3.4	2.6	.8	3.4	3.4	18.3
Finance, property and business services	14.2	16.3	16.8	7.8	8.8	16.6	16.8	71.6
Banking	3.0	3.0	3.1	1.4	1.6	3.1	3.1	13.9
Non-bank finance and investment	1.1	1.3	1.2	.5	.7	1.2	1.2	5.9
Insurance and services to insurance	1.4	1.5	1.5	.7	.8	1.4	1.5	7.2
Property and business services	8.7	10.5	11.0	5.2	5.6	10.8	11.0	44.5
Public admin. and defence(c)	7.8	8.2	8.3	5.7	2.7	8.4	8.4	43.4
Commonwealth government admin.	1.9	1.9	1.9	1.1	.9	2.0	1.9	10.3
State government admin.	2.1	2.4	2.4	1.6	.9	2.5	2.5	13.7
Local government admin.	3.3	3.1	3.1	2.4	.7	3.1	3.2	15.2
Other public admin. and defence(c)	.5	.8	.9	.6	.3	.8	.9	4.3
Community services	36.5	39.0	35.4	12.9	22.6	35.5	38.5	164.5
Health	15.6	16.6	16.6	3.4	13.2	16.5	16.9	74.2
Education, museum and library services	14.5	16.0	12.5	5.6	7.0	12.6	15.1	62.7
Welfare and other community services	6.4	6.4	6.3	3.9	2.4	6.3	6.5	27.6
Recreation, personal and other services(a)	11.0	10.3	11.1	4.3	7.2	11.4	11.4	34.7
Entertainment and recreational services	2.8	2.8	3.1	1.8	1.4	3.2	3.2	15.2
Restaurants, hotels; personal services	8.3	7.5	8.0	2.4	5.8	8.2	8.1	19.5
Total all industries(d)	145.8	151.5	147.5	87.9	61.0	148.8	152.4	673.1

(a) Excludes private households employing staff. (b) Includes employees of private enterprises classified to communication. (c) Excludes members of permanent defence forces and employees of overseas embassies, consulates etc. (d) Includes employees of government agencies classified to agriculture, forestry, fishing and hunting.

TABLE 11. EMPLOYED WAGE AND SALARY EARNERS, NORTHERN TERRITORY - INDUSTRY

Industry	Number of employees ('000)						Gross earnings	
	March 1986	December 1986	January 1987	February 1987		March 1987	March Quarter 1987	
	Persons	Persons	Persons	Males	Females	Persons	\$m	
Mining	1.8	1.7	1.8	1.5	0.2	1.8	1.6	13.0
Manufacturing	2.3	2.3	2.2	1.8	.4	2.1	2.1	14.4
Electricity, gas and water	1.0	1.0	1.2	1.0	.2	1.2	1.1	8.4
Construction	4.1	3.9	3.3	2.6	.6	3.2	3.3	18.4
Wholesale and retail trade	11.3	9.2	9.0	5.8	3.7	9.5	9.5	37.7
Transport and storage	2.2	2.0	1.8	1.4	.5	1.9	1.8	11.4
Communication	1.4	1.5	1.5	1.1	.4	1.5	1.5	8.4
Finance, property and business services	5.8	7.1	5.2	2.5	2.7	5.2	5.1	26.7
Public administration and defence(a)	6.6	6.2	6.2	3.6	2.5	6.1	6.1	37.3
Community services	15.4	16.7	18.8	9.5	9.8	19.3	19.2	91.6
Health	3.5	3.6	3.7	1.0	2.8	3.7	3.8	22.7
Education, museum and library services	5.1	5.2	4.9	1.8	3.2	5.0	5.0	26.5
Welfare and other community services	6.8	7.9	10.2	6.8	3.8	10.5	10.5	42.3
Recreation, personal and other services(b)	3.5	3.3	3.4	1.5	1.7	3.2	3.3	13.4
Total all industries(c)	55.6	55.0	54.4	32.3	22.8	55.1	54.7	280.6

(a) Excludes members of permanent defence forces and employees of overseas embassies, consulates etc. (b) Excludes private households employing staff. (c) Includes employees of government agencies classified to agriculture, forestry and hunting.

TABLE 12. EMPLOYED WAGE AND SALARY EARNERS, AUSTRALIAN CAPITAL TERRITORY - INDUSTRY

Industry	Number of employees ('000)							Gross earnings
	March 1986	December 1986	January 1987	February 1987		March 1987	March Quarter 1987	
	Persons	Persons	Persons	Males	Females	Persons	Persons	
Manufacturing	3.9	4.1	4.3	3.2	1.2	4.4	4.6	22.8
Electricity, gas and water	1.0	1.0	1.0	.8	.1	1.0	1.0	5.5
Construction	6.6	4.5	4.3	3.8	.6	4.4	4.2	24.0
Wholesale and retail trade	15.4	17.3	16.9	8.9	8.4	17.2	17.7	67.5
Transport and storage	4.3	3.9	3.6	3.0	.7	3.7	3.6	21.7
Communication	2.1	2.2	2.0	1.5	.8	2.2	2.0	11.0
Finance, property and business services	11.3	11.0	11.8	6.0	6.2	12.1	12.1	56.1
Public administration and defence(a)	33.6	37.2	37.5	21.8	16.0	37.9	38.0	255.4
Community services	29.2	30.4	28.3	11.3	18.2	29.5	30.2	163.7
Health	8.0	8.7	8.5	1.8	6.9	8.7	8.6	40.0
Education, museum and library services	15.0	14.1	12.6	5.6	7.8	13.4	14.2	78.5
Welfare and other community services	6.1	7.6	7.2	3.8	3.5	7.3	7.3	45.3
Recreation, personal and other services(b)	8.9	8.4	7.6	4.3	4.0	8.3	8.0	27.1
Total all industries(c)	116.6	120.3	117.6	64.7	56.2	120.8	121.6	656.0

(a)Excludes members of permanent defence forces and employees of overseas embassies,consulates etc. (b)Excludes private households employing staff. (c)Includes mining and employees of government agencies classified to agriculture, forestry, fishing and hunting.

TABLE 13. EMPLOYED WAGE AND SALARY EARNERS, PRIVATE SECTOR - EMPLOYER SIZE

Industry	Employer size group, persons(a)							
	Less than 20		20-99		100 or more		Total	
	Feb. 1987	March Quarter 1987	Feb. 1987	March Quarter 1987	Feb. 1987	March Quarter 1987	Feb. 1987	March Quarter 1987
	Persons ('000)	Gross Earnings (\$m)	Persons ('000)	Gross Earnings (\$m)	Persons ('000)	Gross Earnings (\$m)	Persons ('000)	Gross Earnings (\$m)
AUSTRALIA BY INDUSTRY								
Mining	5.1	30.9	6.8	51.0	65.0	575.9	77.0	657.8
Manufacturing	178.0	691.2	210.0	940.6	613.0	3,376.0	1,001.0	5,007.8
Electricity, gas and water	.2	.9	.3	1.7	5.6	37.1	6.1	39.7
Construction	111.9	444.1	55.2	314.2	49.0	341.4	216.1	1,099.7
Wholesale and retail trade	464.1	1,589.6	221.3	992.1	444.2	1,664.1	1,129.6	4,245.8
Transport and storage	49.8	193.1	34.1	183.6	59.0	396.0	142.9	772.7
Finance, property and business services	198.2	857.6	140.3	753.3	221.6	1,124.6	560.1	2,735.5
Community services	124.7	450.1	107.8	416.9	191.7	764.5	424.3	1,631.5
Recreation, personal and other services(b)	161.5	379.4	132.5	382.5	89.0	338.6	383.0	1,100.5
Total all Industries(c)	1,293.8	4,638.1	908.6	4,037.0	1,738.2	8,618.2	3,940.5	17,293.2
STATES AND TERRITORIES								
New South Wales	453.1	1,662.5	310.4	1,419.5	628.3	3,326.2	1,391.9	6,408.2
Victoria	335.2	1,198.2	278.8	1,232.2	507.6	2,485.1	1,121.6	4,915.6
Queensland	196.4	662.9	119.0	512.5	237.1	1,092.1	552.5	2,267.5
South Australia	106.7	385.5	71.0	293.2	144.0	642.0	321.8	1,320.7
Western Australia	132.9	468.4	80.2	373.4	158.3	786.0	371.5	1,627.7
Tasmania	35.1	118.6	27.3	109.1	36.5	176.7	98.9	404.4
Northern Territory	12.3	52.5	9.8	46.1	11.1	47.5	33.2	146.1
Australian Capital Territory	22.0	89.5	12.0	51.0	15.3	62.6	49.2	203.1

(a) See Explanatory notes, paragraph 27-28. (b) Excludes private households employing staff. (c) Includes employees of private enterprises classified to communication.

TECHNICAL NOTE

Reliability of estimates

Estimates for the private sector in this publication are subject to sampling variability because they are based on information relating to a sample of employers rather than a full enumeration, (i.e. they may differ from the figures that would have been produced if the information had been obtained from all private employers). This difference, called sampling error, should not be confused with inaccuracy that may occur because of imperfections in reporting by respondents or in processing by the ABS; such inaccuracy is referred to as non-sampling error and may occur in any enumeration, whether it be a full count or sample. Efforts have been made to reduce the non-sampling error by careful design of questionnaires, detailed checking of returns and quality control of processing. Data for the government sector are obtained from a full enumeration of all agencies and are thus not subject to sampling errors.

2. The sampling error associated with any estimate can be estimated from the sample results. One measure of sampling error is given by the standard error which indicates the degree to which an estimate may vary from the value that would have been obtained from a full enumeration (the 'true' figure). There are about two chances in three that a sample estimate differs from the true value by less than one standard error, and about nineteen chances in twenty that the difference will be less than two standard errors.

3. If the standard error of an estimate is large relative to the size of the estimate, the usefulness of that estimate is seriously impaired.

4. Standard errors on *levels* for industries are shown only for the third month of the quarter. As the survey is conducted quarterly from a common sample of employers, who report employment details for each month of the quarter, standard errors on all estimates for total persons employed in each month are of a similar magnitude.

5. Standard errors on *movements* provide a measure of the reliability of changes in the level of an estimate. Table A shows standard errors for movements in level of estimates for persons between the third month of each quarter. Standard errors for annual movements are updated each December quarter as the magnitude of standard errors for annual movements does not change significantly over this time.

6. An example of the use of standard error on *levels* for the June 1986 estimates is as follows. If the estimated number of wage and salary earners was 5,500,000 with a standard error of 25,000, then there would be about two chances in three that a full enumeration would have given a figure in the range 5,475,000 to 5,525,000 and about nineteen chances in twenty that it would be in the range 5,450,000 to 5,550,000.

7. Standard errors for earnings are approximately the same relative size as standard errors for employment. Detailed standard errors for both employment and earnings are available on request.

TABLE A. EMPLOYED WAGE AND SALARY EARNERS, AUSTRALIA - PRIVATE SECTOR:
STANDARD ERRORS, MARCH 1987, PERSONS ('000)

Industry	N.S.W.	Vic	Qld	S.A.	W.A.	Tas.	N.T.	A.C.T.	Aus.
LEVEL									
Mining	0.6	0.1	0.3	0.1	1.0	0.1	0.1	-	1.2
Manufacturing	3.0	3.8	2.9	1.8	2.5	3.2	2	0.3	7.4
Construction	2.5	2.4	2.7	8	1.8	3	3	5	4.9
Wholesale and retail trade	10.0	9.5	4.6	3.4	3.2	8	1.1	2.0	15.5
Transport and storage	1.8	1.5	1.3	5	1.2	1	2	3	3.0
Finance, property and business services	6.2	8.8	2.7	5.0	3.0	3.2	8	1.3	13.0
Community services	4.3	5.2	2.8	2.6	1.8	1.3	4.3	2.0	8.3
Recreation, personal and other services(a)	4.8	7.3	7.0	1.8	6.0	4	5	-	12.9
Total all industries	14.7	16.4	10.1	7.1	8.4	3.6	4.5	3.3	27.4
QUARTERLY MOVEMENT									
Mining	0.1	0.1	0.3	-	0.3	-	-	-	0.4
Manufacturing	2.1	1.9	1.5	0.9	1.8	0.3	0.1	0.1	3.7
Construction	1.4	1.2	1.8	7	8	2	2	4	3.8
Wholesale and retail trade	6.2	6.4	2.5	3.0	1.8	5	1	1.4	10.0
Transport and storage	1.0	1.0	5	3	8	1	1	2	1.7
Finance, property and business services	3.1	4.0	1.8	2.5	1.1	1.5	1.8	6	6.5
Community services	1.8	3.4	1.2	1.3	1.1	6	2.4	5	5.1
Recreation, personal and other services(a)	2.5	4.5	5.3	1.1	3.1	3	2	5	8.1
Total all industries	5.0	9.8	6.7	4.4	4.4	1.8	3.1	1.7	16.1
ANNUAL MOVEMENT(b)									
Mining	0.7	0.2	0.8	0.4	1.1	0.1	0.1	-	1.6
Manufacturing	5.4	4.5	2.9	2.0	2.8	3	3	0.3	8.4
Construction	2.8	2.3	2.7	7	1.9	3	4	4	4.9
Wholesale and retail trade	6.7	8.2	4.3	3.5	3.2	9	1.3	2.1	12.5
Transport and storage	2.1	1.5	1.5	4	1.6	1	1	2	3.5
Finance, property and business services	4.8	7.2	3.6	3.7	2.5	1.5	1.5	1.1	10.5
Community services	3.1	4.5	1.9	1.5	2.7	1.0	2.9	1.9	7.5
Recreation, personal and other services(a)	4.2	6.0	5.0	1.3	5.3	7	5	8	10.5
Total all industries	11.8	14.3	8.9	6.1	8.2	2.1	3.6	3.2	23.4

(a) Excludes private households employing staff. (b) See paragraph 5 above.