



THE UNIVERSITY OF

MELBOURNE

As Curious An Entity: Building digital resources from context, records and data

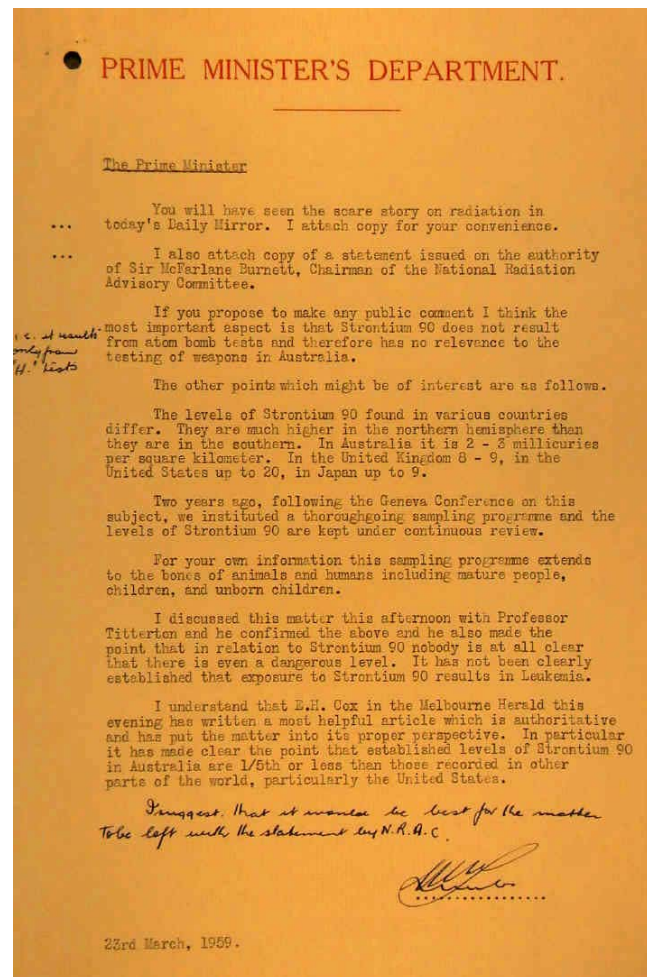
Presenters:

Antonina Lewis and Mike Jones



Strontium 90, 1959. Noel Counihan

Private collection, Melbourne. © The artist's estate



Letter to the Prime Minister, 1959. NAA: A4940, C2067

© Commonwealth of Australia (National Archives of Australia) 2012



THE UNIVERSITY OF
MELBOURNE

eScholarship Research Centre



Concentration in the US Beer Industry





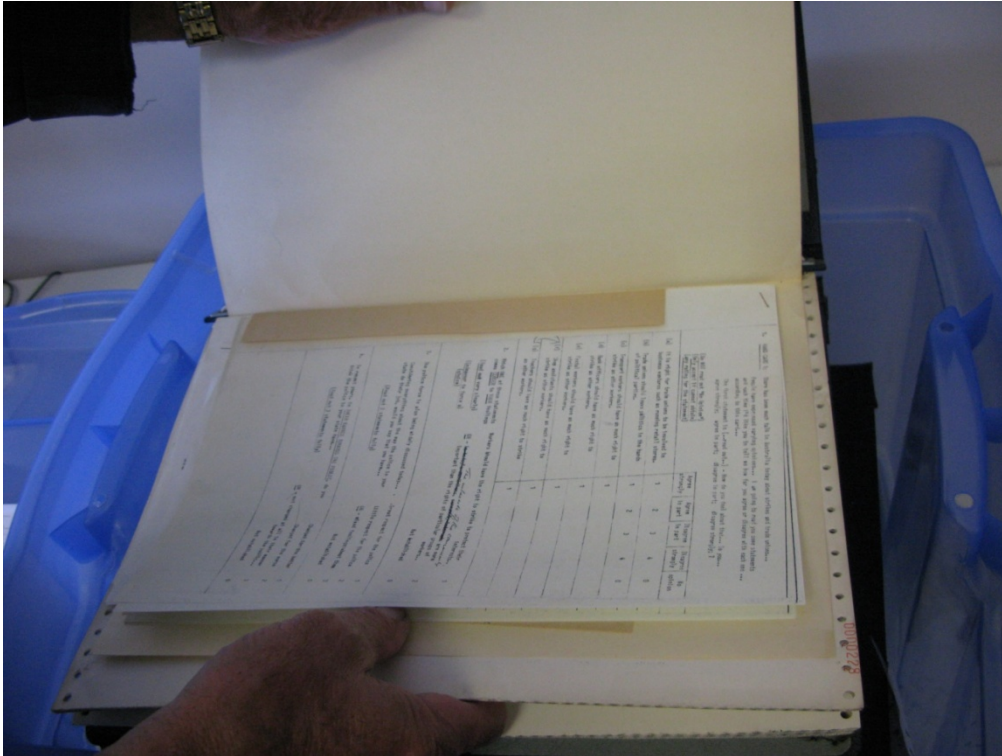
THE UNIVERSITY OF
MELBOURNE

eScholarship Research Centre

THE MEN WHO MADE THE ELECTION COME ALIVE

Who are the numbers men Fraser and Hayden fear the most? They are a formidable quartet of pollsters; Gary Morgan, Irving Saulwick, Ian McNair and Rod Cameron have managed to make a lacklustre election look better than it is. How do the pollsters operate, what are their finances, what sort of lifestyles do they lead?

THE WEEKEND REVIEW
every Friday inside
THE AUSTRALIAN
FINANCIAL REVIEW
The best weekends start on Friday



Examples of collection material:

Poll questionnaire and tabulated data (1970s)
Floppy discs containing poll data files (1990s)



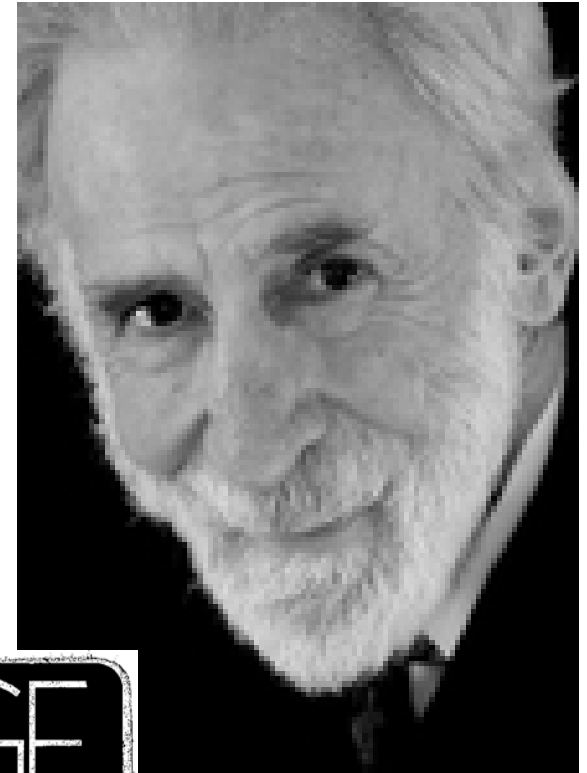
Australian
National
University

MACQUARIE
UNIVERSITY



Denis Muller & Associates

Policy and Social Research Consultants

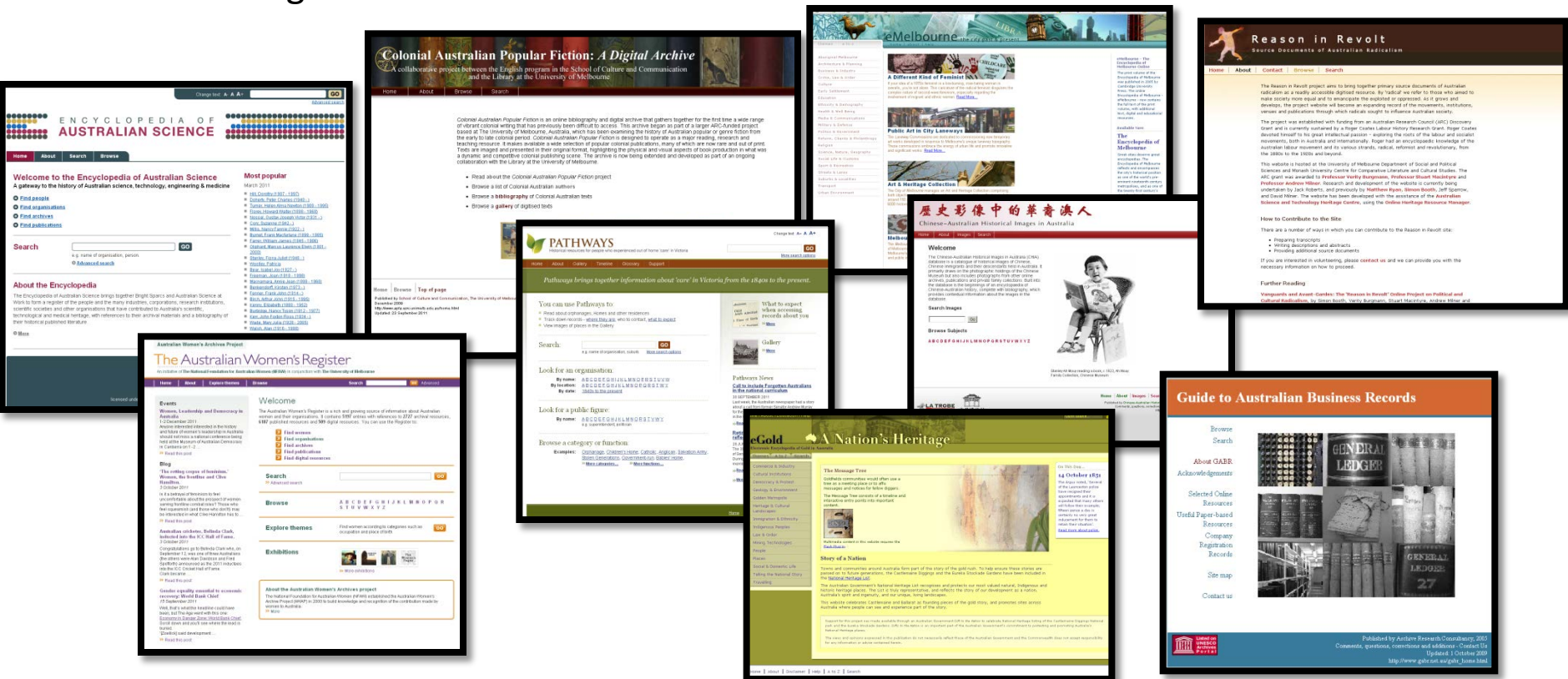




eScholarship Research Centre

University Library, The University of Melbourne eScholarship Research Centre

“Contributing to the development of an open and equitable world of useful knowledge.”



The University of Melbourne eScholarship Research Centre and the Pitt Rivers Museum, Oxford

A Journey of 13,033 Stones: The Westlake Collection and Papers

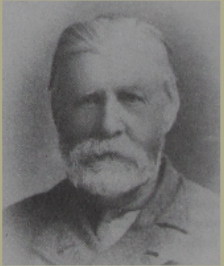
An annotated history and guide to the collection and papers of Ernest Westlake (1856-1922) held at the Pitt Rivers Museum, Oxford, and the Oxford University Museum of Natural History

Listed by Rebe Taylor, with Michael Jones and Gavan McCarthy

This is a guide to the Westlake Papers, held in the Manuscript Collections of the Pitt Rivers Museum, University of Oxford. The guide includes materials from the Henry Balfour Papers and E. B. Tylor Papers, Pitt Rivers Museum, and some of the museum's related accession documentation.

Cultural Advice Statement

Users of the guide are advised that the Westlake Papers and the associated guide includes images and names of deceased persons. These may cause sadness or distress in some Indigenous communities. [Details]



Home
Provenance
Series List
Gallery
Index
Search

Introductory Material

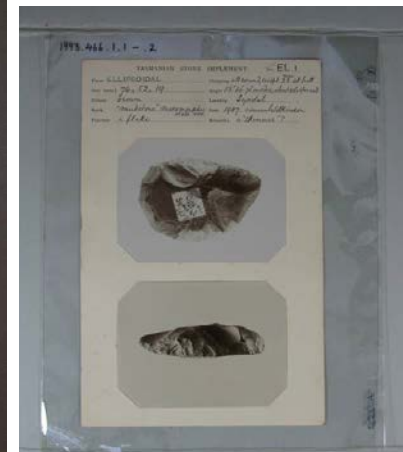
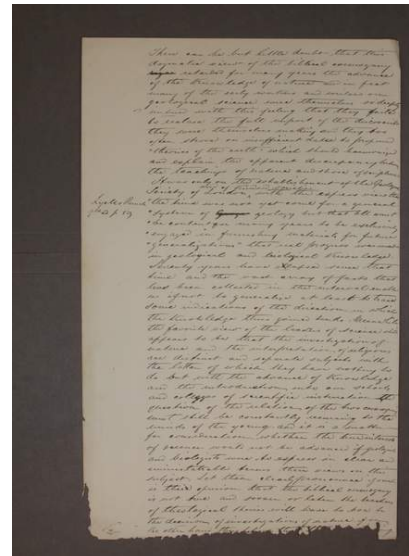
- Series 1 - Information about Ernest Westlake, his Archival Records and Stone Implement Collection

Part I - Pitt Rivers Museum, University of Oxford

- Series 2 - Correspondence: 1893-1916 and 1923-1976
- Series 3 - Notebooks: 1908-1910
- Series 4 - Exercise Books: 1909 - 1910
- Series 5 - Publications - Tasmanian Stone Implements and Aborigines
- Series 6 - Publications - Tasmanian Travel and Tourism
- Series 7 - Photographs - Tasmanian Aborigines and Collecting Sites
- Series 8 - Photographs - Classified Tasmanian Stone Implements (mounted)
- Series 9 - Photographs - Classified Tasmanian Stone Implements (unmounted)
- Series 10 - Photographs - Unclassified Tasmanian Stone Implements (unmounted)
- Series 11 - Maps - Tasmanian
- Series 12 - Eoliths and other Topics
- Series 13 - Westlake Stone Implement Collection Accession Documentation
- Series 14 - 'Stone Implements of the Natives of Tasmania'; unpublished manuscript and plates by Henry Balfour.

Part II - Oxford University Museum of Natural History

- Series 15 - Correspondence and Biographical Papers
- Series 16 - Geological Notes and Notebooks
- Series 17 - Paranormal and Psychological Research



“The searchable-on-line Australian Women's Register is a valuable and growing source of biographical data about Australian women and their organisations, with hyper-links to the archival repositories and libraries where their records are held and to other sources of information.”

Australian Women's Archives Project

The Australian Women's Register

An initiative of **The National Foundation for Australian Women (NFAW)** in conjunction with **The University of Melbourne**

Home
About
Explore themes
Browse

GO
Advanced

Events

Women, Leadership and Democracy in Australia
1-2 December 2011
Anyone interested interested in the history and future of women's leadership in Australia should not miss a national conference being held at the Museum of Australian Democracy in Canberra on 1-2 ...
[» Read this post](#)

Blog

'The rotting corpse of feminism,' Women, the frontline and Clive Hamilton.
3 October 2011
Is it a betrayal of feminism to feel uncomfortable about the prospect of women serving frontline combat roles? Those who feel squeamish (and those who don't!) may be interested in what Clive Hamilton has to ...
[» Read this post](#)

Australian cricketer, Belinda Clark, inducted into the ICC Hall of Fame.
3 October 2011
Congratulations go to Belinda Clark who, on September 12, was one of three Australians (the others were Alan Davidson and Fred Spofforth) announced as the 2011 inductees into the ICC Cricket Hall of Fame. Clark became ...
[» Read this post](#)

Gender equality essential to economic recovery: World Bank Chief
15 September 2011
Well, that's what the headline could have been, but The Age went with this one: [Economy in Danger Zone: World Bank Chief](#). Scroll down and you'll see where the lead is buried.

Welcome

The Australian Women's Register is a rich and growing source of information about Australian women and their organisations. It contains **5197** entries with references to **2727** archival resources, **6187** published resources and **509** digital resources. You can use the Register to:

- ▶ [Find women](#)
- ▶ [Find organisations](#)
- ▶ [Find archives](#)
- ▶ [Find publications](#)
- ▶ [Find digital resources](#)

Search

[» Advanced search](#)

GO

Browse

ABCDEFGHIJKLMNOPQR

STUVWXYZ

Explore themes

Find women according to categories such as occupation and place of birth. GO

Exhibitions






[» More exhibitions](#)

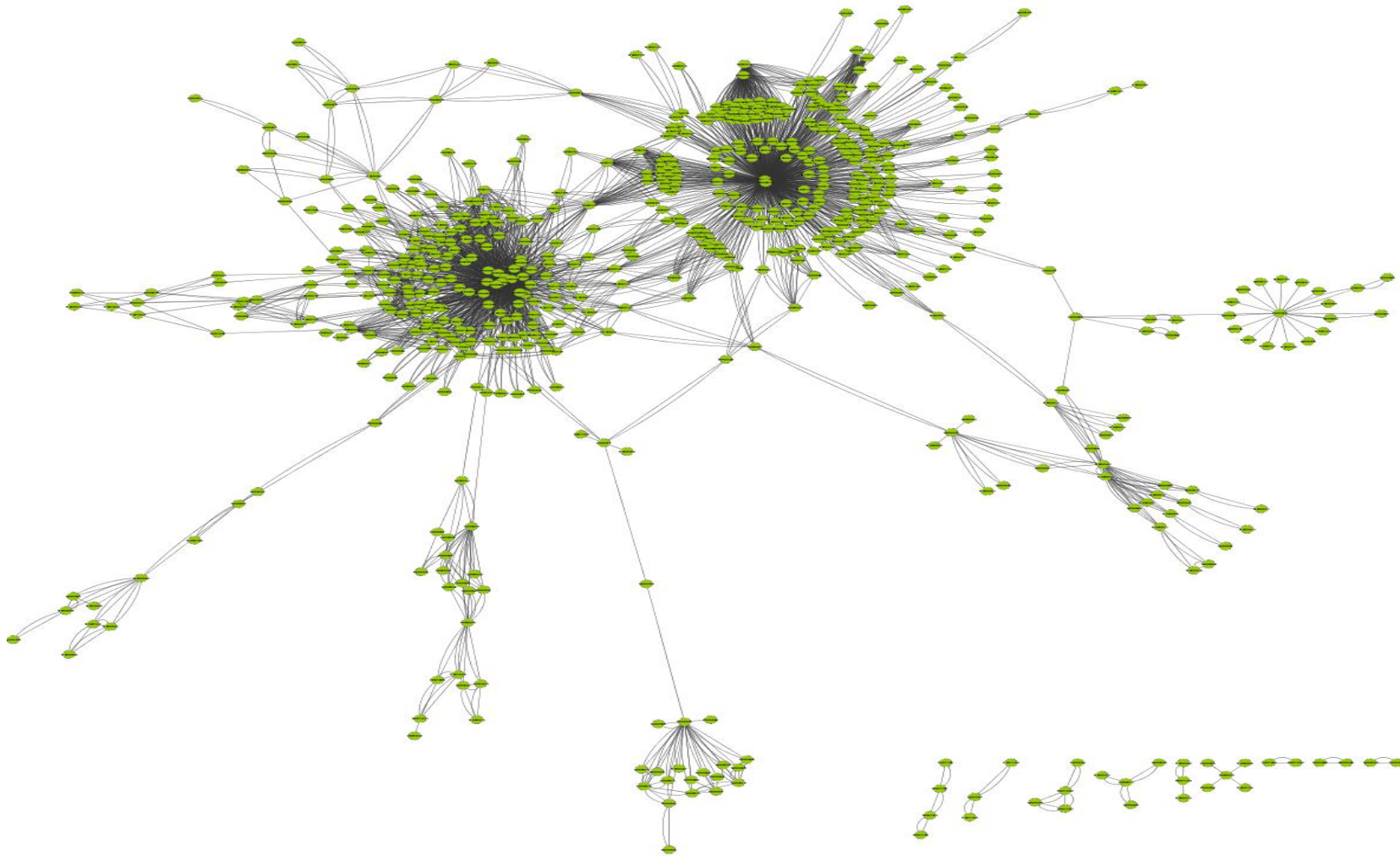
About the Australian Women's Archives project

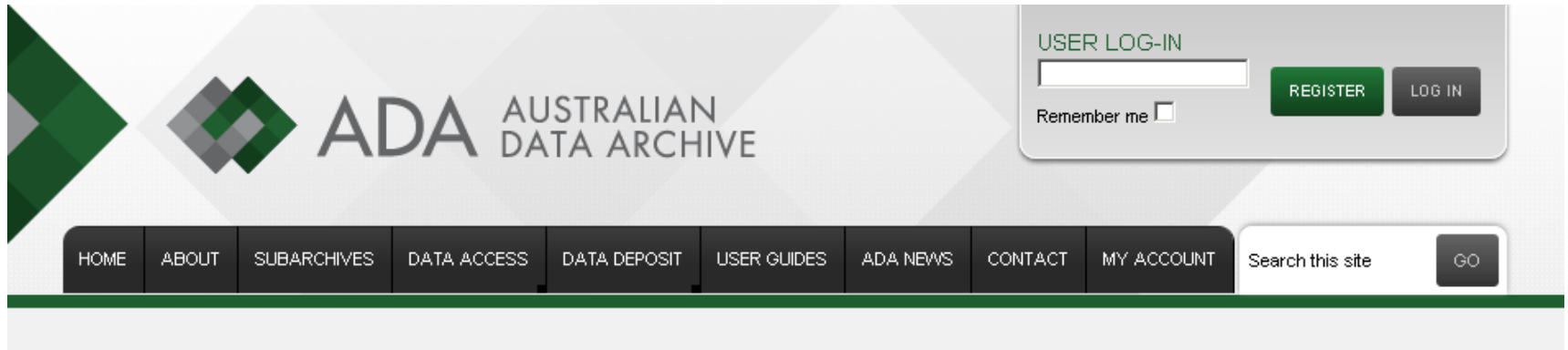
The National Foundation for Australian Women (NFAW) established the Australian Women's Archive Project (AWAP) in 2000 to build knowledge and recognition of the contribution made by women to Australia.
[» More](#)



THE UNIVERSITY OF
MELBOURNE

eScholarship Research Centre





ADA AUSTRALIAN DATA ARCHIVE

USER LOG-IN

Remember me

REGISTER LOG IN

HOME ABOUT SUBARCHIVES DATA ACCESS DATA DEPOSIT USER GUIDES ADA NEWS CONTACT MY ACCOUNT

Search this site GO

YOU ARE HERE: /ADA/HOME

 SOCIAL SCIENCE

 HISTORICAL

 INDIGENOUS

 LONGITUDINAL

 QUALITATIVE

 INTERNATIONAL

Welcome to the Australian Data Archive

The Australian Data Archive (ADA) provides a national service for the collection and preservation of digital research data and to make these data available for secondary analysis by academic researchers and other users.

The ADA is comprised of six sub-archives:

- ADA Social Science
- ADA Historical
- ADA Indigenous
- ADA Longitudinal

News from the Australian Data Archive

New datasets in the ADA holdings, including the Australian Survey of Social Attitudes, the Australian Election Study and the Australian Demographic Data Bank datasets, now include a mapping variable. If the mapping variable is added to a cross-tabulation, the map icon can be used to display state-level information on a map of Australia.

Funding Partners



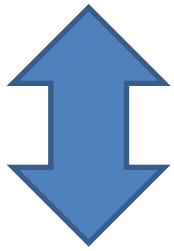
Collaboration Partners

Each has strengths

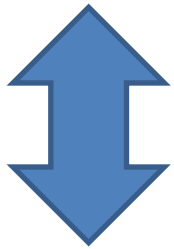
Each has weaknesses

No single group can do everything

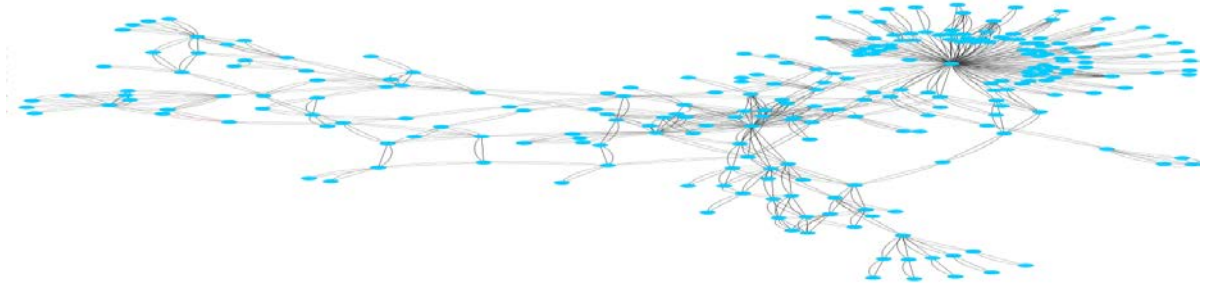
CONTEXT



RECORDS



DATA



```

<div type="text">
<head>
<h1>
<img alt="A snippet of HTML code with various annotations like <note>, <desc>, and <img alt=..." data-bbox="770 750 980 995"/>

```



THE UNIVERSITY OF
MELBOURNE

Thank you
Questions?

Presenters:

Antonina Lewis and Mike Jones
eScholarship Research Centre