

ANGULAR MOMENTA, DYNAMICAL MASSES, AND MERGERS OF BRIGHTEST CLUSTER GALAXIES*

JIMMY¹, KIM-VY TRAN¹, SARAH BROUGH², KARL GEBHARDT³, ANJA VON DER LINDEN^{4,5,6}, WARRICK J. COUCH⁷, AND ROB SHARP⁸

¹ George P. and Cynthia W. Mitchell Institute for Fundamental Physics and Astronomy, Department of Physics and Astronomy, Texas A&M University, College Station, TX 77843, USA

² Australian Astronomical Observatory, P.O. Box 915, North Ryde, NSW 1670, Australia

³ Department of Astronomy, University of Texas at Austin, 1 University Station C1400, Austin, TX 78712, USA

⁴ Kavli Institute for Particle Astrophysics and Cosmology, Stanford University, 452 Lomita Mall, Stanford, CA 94305-4085, USA

⁵ Department of Physics, Stanford University, 382 Via Pueblo Mall, Stanford, CA 94305-4060, USA

⁶ Dark Cosmology Centre, Niels Bohr Institute, University of Copenhagen, Juliane Maries Vej 30, DK-2100 Copenhagen Ø, Denmark

⁷ Centre for Astrophysics and Supercomputing, Swinburne University, P.O. Box 218, Hawthorn, VIC 3122, Australia

⁸ Research School of Astronomy & Astrophysics, Australian National University, Cotter Road, Weston Creek, ACT 2611, Australia

Received 2013 April 15; accepted 2013 October 23; published 2013 November 13

ABSTRACT

Using the VIMOS integral field unit (IFU) spectrograph on the Very Large Telescope, we have spatially mapped the kinematic properties of 10 nearby brightest cluster galaxies (BCGs) and 4 BCG companion galaxies located within a redshift of $z = 0.1$. In the hierarchical formation model, these massive galaxies ($10^{10.5} M_{\odot} < M_{\text{dyn}} < 10^{11.9} M_{\odot}$) are expected to undergo more mergers than lower mass galaxies, and simulations show that dry minor mergers can remove angular momentum. We test whether BCGs have low angular momenta by using the λ_{Re} parameter developed by the SAURON and ATLAS^{3D} teams and combine our kinematics with Sloan Digital Sky Survey photometry to analyze the BCGs' merger status. We find that 30% (3/10) of the BCGs and 100% of the companion galaxies (4/4) are fast rotators as defined by the ATLAS^{3D} criteria. Our fastest rotating BCG has a $\lambda_{Re} = 0.35 \pm 0.05$. We increase the number of BCGs analyzed from 1 in the combined SAURON and ATLAS^{3D} surveys to 11 BCGs total and find that above $M_{\text{dyn}} \sim 11.5 M_{\odot}$, virtually all galaxies, regardless of environment, are slow rotators. To search for signs of recent merging, we analyze the photometry of each system and use the $G - M_{20}$ selection criteria to identify mergers. We find that $40\% \pm 20\%$ of our BCGs are currently undergoing or have recently undergone a merger (within 0.2 Gyr). Surprisingly, we find no correlation between galaxies with high angular momentum and morphological signatures of merging.

Key words: galaxies: clusters: general – galaxies: elliptical and lenticular, cD – galaxies: evolution – galaxies: kinematics and dynamics – galaxies: photometry – galaxies: structure

Online-only material: color figures

1. INTRODUCTION

Galaxies are expected to grow hierarchically in a Λ CDM universe. In this framework, clouds of dark matter cool down and begin to collapse, forming the structure upon which galaxies and clusters are formed (Peebles 1969; Doroshkevich 1970; White 1984). Simulations of mergers of dark-matter halos have shown that major mergers (progenitor mass ratios of 1:1 or 2:1) increase the angular momentum of the combined dark-matter halo (Vitvitska et al. 2002). Other studies have shown that minor mergers either slightly increase or simply preserve the angular momentum of a dark-matter halo (D'Onghia & Burkert 2004). Without taking into account the interactions of baryons, merger events (whether major or minor) appear to increase a dark-matter halo's specific angular momentum.

When accounting for baryons, the connection between mergers and angular momentum changes slightly. Although the effects of baryons within one effective radius (R_e) are uncertain (van den Bosch et al. 2002; de Jong et al. 2004), we can examine merger simulations that include baryons to see how merging galaxies behave on a large scale. Spiral galaxies, which have a high initial angular momentum, have cold stellar disks that are fragile and easily destroyed in mergers (Naab et al. 2006). When these initially disky high angular momentum galaxies merge together, they form early-type galaxies that were expected to

be dispersion-supported and not rotation-supported. However Emsellem et al. (2007) showed that early-type galaxies can still exhibit a high angular momentum, and in fact the majority of them do (86% in Emsellem et al. 2011). The mechanism by which these early-type galaxies have retained or regained their angular momentum is still uncertain.

One possible explanation for the high angular momentum observed in early-type galaxies comes from simulations of gas-rich mergers. In the early universe ($z > 2$), before feedback mechanisms have had a significant impact on galaxy composition, galaxy mergers are expected to be gas-rich (Tacconi et al. 2010). Simulations of mergers of equal-mass, gas-rich galaxies (wet major mergers) have been shown to produce high angular momentum galaxies (Naab et al. 2006). The dissipational effect of gas appears to be an important factor in forming a high angular momentum merger remnant (Bender et al. 1992; Kormendy & Bender 1996; Faber et al. 1997; Naab et al. 2006).

However, gas-rich mergers are only expected at intermediate/high redshifts. From $z = 2$ until the present, as feedback mechanisms remove gas from the galaxies, mergers are expected to be increasingly gas-poor and dissipationless. In the case of major gas-poor (dry) mergers, Bois et al. (2011) have shown that major dry mergers are capable of forming galaxies with a variety of angular momenta, depending upon the initial orbital parameters. They find little dependence of a merger remnant's angular momentum on the progenitor galaxy's gas fraction. For a galaxy to transform from an initially fast rotating galaxy into a slowly rotating galaxy, the galaxy has to accrete at least half of its mass via dry minor mergers (Bournaud et al. 2007; Jesseit

* Based on Very Large Telescope (VLT) service mode observations (Programs 381.B-0728 and 087.B-0366) gathered at the European Southern Observatory, Chile.

et al. 2009; Bois et al. 2010, 2011). The environment in which a galaxy exists will determine the frequency of major and minor galaxy mergers.

1.1. Merger History of Brightest Cluster Galaxies

Brightest cluster galaxies (BCGs) exist in an extreme environment. They are typically located in the center of their cluster, near the bottom of the cluster’s potential well. As a result of their location, BCGs are expected to undergo more mergers than a typical galaxy. The increased frequency of merging events in BCGs should make them sensitive to the relation between galaxy mergers and angular momentum.

The large number of merging events is also likely the cause of the high mass and early-type classification observed in a typical BCG. Observations by Lidman et al. (2012) have shown that BCGs have grown in mass since $z = 1.6$ and on average have grown by a factor of 1.8 ± 0.3 from $z = 0.9$ to $z = 0.2$. Similarly, simulations of galaxy growth via mergers by De Lucia & Blaizot (2007) have shown that only half the mass of a BCG is in place by $z = 0.5$. The same simulations found that the majority of stars within a BCG formed very early, with 50% of the stars being formed before $z = 5$ (De Lucia & Blaizot 2007). In this scenario, BCGs would have accumulated half of their mass in the time frame from $z = 0.5$ to $z = 0$ via gas-poor mergers.

The fact that multiple minor dry mergers have been shown to remove angular momentum from a galaxy when the mergers are isotropically distributed, combined with the fact that BCGs in simulations undergo a higher than average number of dry merger events, leads us to hypothesize that BCGs are likely to have a lower average angular momentum when compared to standard elliptical galaxies. In other studies BCGs have been shown to be remarkably uniform and exhibit special characteristics when compared to elliptical galaxies not at the center of their cluster. von der Linden et al. (2007) showed that a typical BCG is more likely to host a radio-loud active galactic nucleus (AGN), is larger in size, and has higher velocity dispersion on average than a typical elliptical galaxy in the same mass range. These currently observed differences are likely the result of the combination of two effects: BCGs’ large stellar masses and BCGs’ location at the bottom of their host clusters’ potential well, although it is uncertain which effect dominates.

Specific features of BCGs, such as their large radii and low surface brightnesses compared to normal elliptical galaxies are consistent with the products of major dissipationless mergers (e.g., Oegerle & Hoessel 1991; Brough et al. 2005; von der Linden et al. 2007; Lauer et al. 2007; Tran et al. 2008). Their sizes and velocity dispersions may have also evolved faster than less-massive early-type galaxies since $z \sim 0.3$ (Bernardi 2009; although, see also Stott et al. 2011). These two factors cause the Faber–Jackson relation between luminosity and velocity dispersion to be flatter for BCGs. Similar studies of the fundamental plane (FP) have found differing slopes between populations of BCGs and elliptical galaxies (Desroches et al. 2007). The differing slope of the Faber–Jackson relationship and the FP for BCGs compared to ellipticals supports the scenario where BCGs form mainly via dissipationless mergers (Boylan-Kolchin et al. 2006).

1.2. Signatures of Recent Merging in BCGs at $z < 0.1$

By combining spectroscopic information with photometric information, we examine the recent merger history of a sample of 10 BCGs. Integral field unit (IFU) spectroscopy allows us

to observe the kinematic properties of galaxies in two dimensions, showing whether they are largely rotation-supported or dispersion-supported. The SAURON team have developed the λ_R parameter, which utilizes the increased spatial information from IFU spectroscopy to quantify the observed stellar angular momentum in galaxies (Emsellem et al. 2007). They used this parameter to quantify the angular momentum of 48 early-type galaxies. This work was followed by the ATLAS^{3D} team, which performed a similar analysis on 260 galaxies (Emsellem et al. 2011). In both studies they classified galaxies as either fast rotators (FRs) or slow rotators (SRs) based on their λ_R value within $1R_e$.

The λ_R parameter provides a quantitative method to compare the stellar kinematics of BCGs to those of other early-type galaxies, however the SAURON sample has only four galaxies with $M_{\text{dyn}} > 10^{11.5} M_{\odot}$ and only includes one BCG (M87). The ATLAS^{3D} survey studies an additional 10 galaxies with $M_{\text{dyn}} > 10^{11.5} M_{\odot}$. Above $10^{11.5} M_{\odot}$ only 23% of galaxies from the ATLAS^{3D} survey are classified as FRs (Emsellem et al. 2011). The mass limit of $10^{11.5} M_{\odot}$ may be important as Peng et al. (2010) have shown that above $M_{*} = 10^{11.5} M_{\odot}$ the majority of galaxies have undergone a major merger after their star formation was quenched. If dry mergers preferentially remove angular momentum, then we would expect to see fewer BCGs above $10^{11.5} M_{\odot}$ with a high λ_R value.

In order to determine the recent merger history of our galaxies, we use a combination of Source Extractor (SExtractor; Bertin & Arnouts 1996), GALFIT (Peng et al. 2002), and PyMorph (Vikram et al. 2010) to produce photometric models of these galaxies. We then subtract our models from the original image to identify tidal tails, multiple cores, and excess intra-cluster light, which would all be signs of merging that can be identified visually. A more quantitative detection of merging comes from the $G - M_{20}$ (Gini coefficient minus the second order moment of the brightest 20% of pixels) value for each galaxy. According to simulations, these parameters would tell us if there was a dry merger within the last 0.2 Gyr (Lotz et al. 2011). After 0.2 Gyr merger information will have been erased by dynamical friction, meaning this selection criterion is only able to inform us of very recent or currently ongoing mergers.

It is our goal to measure λ_R , dynamical mass, and recent merger history for our sample of BCGs and compare our kinematic results to the SAURON and ATLAS^{3D} results for early-type galaxies. We present targeted observations of BCG stellar kinematics and photometrics for seven BCGs with close companions and three BCGs with no close companion. In our initial selection, we specifically chose BCGs with close companions to determine if they were bound to each other. We also determine if morphological signatures of merging are correlated with λ_{R_e} measurements.

We assume a Hubble constant of $H_0 = 70 \text{ km s}^{-1} \text{ Mpc}^{-1}$ and $\Omega_M = 0.3, \Omega_{\Lambda} = 0.7$.

2. OBSERVATIONS

2.1. Spectroscopic Measurements

In von der Linden et al. (2007), a sample of 625 BCGs ($z < 0.1$) were selected from the C4 cluster catalog (Miller et al. 2005) of the Third Data Release of the Sloan Digital Sky Survey (SDSS; York et al. 2000). In Brough et al. (2011) BCGs with companions within $\sim 10''$ (18 kpc at $z \sim 0.1$) were chosen from the von der Linden sample. We are using the same four galaxies from Brough et al. (2011) as well as seven new galaxies

Table 1
IFU Observational Properties of BCGs and Companions

Galaxy (SDSS-C4-DR3)	R.A. (J2000)	Decl. (J2000)	Seeing (") ± 0.01	Integration Time (s)	Number of Exposures	Observation Date	Cluster Velocity Dispersion σ (km s ⁻¹)
1027	12:47:43.4	-00:09:07	1.0	6900	6	2008 Apr 5 and 2008 Jun 3	1020
1042	15:15:18.0	+04:22:54	0.8	6000	6	2011 May 4 and 2011 May 30	857
1048	13:42:09.6	+02:13:38	1.0	6000	6	2011 Apr 8 and 2011 Jul 30	828
1050	13:44:25.8	+02:06:36	0.8	3450	3	2008 Apr 27	514
1066	13:31:10.8	-01:43:49	0.8	3450	3	2008 May 12	814
1153	16:04:13.7	+00:03:13	0.8	6800	6	2008 Apr 5 and 2008 Jun 4	295
1261	12:25:33.4	+09:23:29	0.8	6000	6	2011 Apr 30	520
2001	23:24:18.0	+14:38:00	0.9	3450	3	2008 Aug 9	695
2039	22:31:43.2	-08:24:32	1.2	10000	10	2011 Jun 4 and 2011 Jun 5 2011 Jun 29 and 2011 Jun 30	505
2086	23:22:56.4	-10:02:44	1.2	3450	3	2008 Aug 2	599

Notes. Seeing is the average over all exposures for each galaxy. BCGs 1027, 1050, 1066, and 2086 were also analyzed in Brough et al. (2011). Cluster velocity dispersion is from von der Linden et al. (2007).

chosen by the same criteria as Brough et al. (2011). The redshifts of these objects are in the range $0.04 < z < 0.1$. For simplicity, we will drop the SDSS-C4-DR3 prefix from all target BCG names, and simply use the last four digits that are unique to each cluster. In total, our initial sample size is seven BCGs with companions and four BCGs without companions within $\sim 10''$. One target, BCG 1067, will be omitted from analysis because it had excessively noisy observations and we were unable to obtain results on that BCG above our signal-to-noise cut of 10.

The first set of BCGs were observed with VIMOS (Le Fèvre et al. 2003) on the Very Large Telescope (VLT) from April to August of 2008 (Prog. ID 381.B-0728) and the second set were observed, also with VIMOS, from April to July of 2011 (Prog. ID 087.B-0366). VIMOS was used in IFU mode with the high-resolution blue grism and a spatial sampling of $0''.67 \text{ pixel}^{-1}$ (BCGs 1153 and 1067 were observed with a spatial sampling of $0''.33 \text{ pixel}^{-1}$). This gives a field-of-view (FOV) of $27'' \times 27''$ ($13'' \times 13''$ for 1153 and 1067). The VIMOS HR blue grism (pre 2012 March 15 version) has a spectral range of 4150–6200 Å and a spectral resolution of $0.51 \text{ Å pixel}^{-1}$. Observations were made during dark time, with an average seeing of $0''.9$. Average seeing for individual galaxies can be seen in Table 1.

2.1.1. IFU Data Reduction

Initial IFU data reduction is achieved using the VIMOS Pipeline (Izzo et al. 2004). A VIMOS FOV is split into four quadrants, and initially each quadrant is reduced separately by the VIMOS Pipeline. The VIMOS Pipeline makes the necessary calibration files (master bias, arc spectrum, flat field, fiber identification, etc.). The VIMOS Pipeline also extracts the science spectrum in each fiber from the raw science frames.

The science spectra are then fed into IDL routines, where we first mask the bad fibers so that they do not interfere with the data reduction process. For each quadrant, a sky background spectrum is calculated by taking the median over the spaxels (spatial pixels) that do not contain a significant contribution of light from the target galaxy. Sky spaxels are selected by plotting the intensity in every spaxel, and looking for a sustained minimum in the intensities across several adjacent fibers. We perform a Gaussian fit to the 5577 Å [O I] skyline. This fit is used to normalize the transmission in each spaxel across the whole quadrant. Since the strength of the skyline should be the same in all spaxels, each individual spectra is scaled so that its skyline flux matches the median skyline flux across all

spaxels. We then subtract the Gaussian fit from the spectra to remove the skylines. Once this has been completed for each quadrant, we combine the four quadrants into one data cube, and then renormalize transmission across the whole cube using the strength of the skylines once again (skyline information was preserved from the earlier step). This provides us with a data cube containing two-dimensional (2D) spatial information, with the spectrum being the third dimension.

Each BCG observation consists of multiple dithered exposures, so we stack the multiple exposures with a 5σ clipped mean. With our stacked data cube, we then perform a signal-to-noise cut, where we discard any spaxel with an overall signal-to-noise ratio (S/N) less than 5. We use the 2D adaptive spatial binning code of Cappellari & Copin (2003) to re-bin pixels to a minimum S/N of 10 pixel^{-1} . This takes the fibers that are below the final S/N cutoff and finds fibers near them to bin together so they reach our required S/N.

2.1.2. Stellar Kinematics

The stellar kinematics (velocity, V , and line-of-sight velocity dispersion, σ) of the galaxy are computed from the binned spectra using a penalized pixel fitting scheme (pPXF; Cappellari & Emsellem 2004) and the Medium-resolution Isaac Newton Telescope Library of Empirical Spectra (MILES; Sánchez-Blázquez et al. 2006) evolutionary stellar population templates. This method determines the stellar kinematics by fitting templates to the absorption line features in the spectra (Figure 1). We choose 10 templates of stars in the range of G6 to M1 (luminosity classes III, IV, and V) from the MILES library and convolve them using the quadratic difference between the resolution of the library and the observations. The pPXF fits are performed in the region around the observed G -band and calcium H and K absorption features ($4200\text{--}4900 \text{ Å}$). The MILES templates cover a similar wavelength range to VIMOS and have a similar spectral sampling ($\text{FWHM} = 1.8 \text{ Å}$).

Velocity dispersion for a galaxy as a whole is found by co-adding all fibers within the effective radius of a galaxy into one bin, and performing a pPXF fit on the binned spectrum as in Cappellari et al. (2006). As an alternative method for calculating the velocity dispersion of the whole galaxy, we also tried calculating the luminosity weighted mean of each individual bin's velocity dispersion. These results were often not in agreement with the effective spectrum method. However, by integrating (preliminary) inclination information as described in

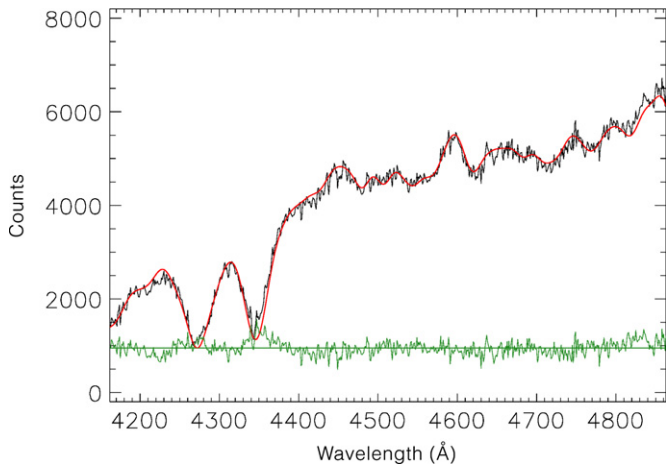


Figure 1. Example of a fit produced by pPXF. The spectrum pictured here is the result of co-adding every spaxel within the effective radius of the BCG 1050. The black line is the science spectrum, and the red line is the best fit produced by pPXF. The green line is the residual from the best fit.

(A color version of this figure is available in the online journal.)

Equation (29) of Cappellari et al. (2013), the two velocity dispersion measuring methods appear to be in agreement. We choose to use the effective spectrum method instead of the weighted mean method because of the higher S/N afforded by binning many spaxels together. The effective spectrum method also simulates an observation with a single aperture of radius R_e .

We perform 100 Monte Carlo realizations on each observation to estimate the uncertainty in our results. This process involves adding random noise on the order of the background noise to each binned spectrum, and performing the pPXF fit again on the noisy data. We repeat this process 100 times, then take a weighted mean of all the fits with the random noise added. The standard deviation of all the fits is our uncertainty for our velocity and velocity dispersion results. Typical uncertainties of both values are on the order of 20 km s^{-1} . Errors on M_{dyn} and λ_R are propagated from these errors using standard Taylor series error propagation techniques.

The IDL code described above to reduce our data is publicly available.⁹

2.2. Photometric Measurements

Photometric observations are taken from SDSS Data Release 3. For our analysis we use only the r -band images of each galaxy. Each galaxy is modeled twice, once using a combination of SExtractor (Bertin & Arnouts 1996) and GALFIT (Peng et al. 2002) with a single component de Vaucouleurs profile, and a second time using PyMorph (Vikram et al. 2010) to obtain the Gini and M_{20} coefficients. The de Vaucouleurs profile is used to find the effective radius of each galaxy.

Effective radius measurements are found by first feeding the SDSS r -band image into SExtractor to obtain a catalog of all sources identified in the image. We use the objects catalog to determine the centers of the galaxies we wish to model in GALFIT. We also invert the segmentation map produced by SExtractor (non-zero pixels are set to zero, and pixels that were originally zero are set to one) to generate the bad pixel mask that will be used with GALFIT. The default values and keyword searches were used as inputs to SExtractor except the following: MAG_ZEROPOINT = 25.61, BACK_SIZE =

256, and PIXEL_SCALE = 0.396. The original SDSS r -band images are then fed into GALFIT using the position, magnitude, effective radius, axis ratio, and position angle found by SExtractor as initial assumptions. We model each galaxy using a single component de Vaucouleurs profile in GALFIT. We generate our point-spread function by using a 2–4 Gaussian fit in GALFIT to model a point source near each galaxy. Residual maps are inspected by eye to determine if the fit appears to be reasonable, and if not, initial parameters are adjusted until a reasonable fit is found.

PyMorph combines SExtractor, GALFIT, and other added analysis routines in a python wrapper in order to automate the photometric analysis process. It is used to determine the merger properties of our sample of galaxies. We use it to make two component models for each galaxy. We then perform a visual inspection of the residual image to check for the goodness of the fit.

PyMorph also reports the concentration, asymmetry, clumpiness, Gini coefficient, and M_{20} for each galaxy that is modeled. We use the relation between the Gini coefficient and M_{20} to search for recent mergers. The Gini coefficient measures uniformity of the distribution of a galaxy's light (Abraham et al. 2003) and M_{20} measures the distribution of the brightest 20% of pixels. The relation between these two properties tells us if there are irregularities in the galaxy's light distribution, signaling some type of violent interaction. We can rule out the possibility that anomalies in these parameters are due to projection effects because we can measure the redshift of each galaxy to confirm that they are indeed located near each other in physical space.

3. RESULTS

3.1. Kinematic Maps

We begin our spectroscopic analysis with the velocity maps seen in Figures 2 and 3. Our first goal is to search for visual signs of galaxy rotation. Figure 2 shows the velocity maps of the galaxies without companion measurements. This sample contains three of our control galaxies, BCGs 1042, 1050, and 1153, which were selected to not have any companions within $10''$. The S/N on the companion galaxies of BCGs 2001, 2039, and 2086 was below 10 after binning, meaning we were unable to achieve accurate measurements of the companion's kinematic properties.

By visual inspection of Figure 2, we see that five of the BCGs (1042, 1050, 2001, 2039, and 2086) appear to have little to no rotation. They have a uniform velocity across the entire BCG and the velocities measured in each spaxel of the BCG are very near 0 km s^{-1} . These observations are consistent with a dispersion-supported early-type galaxy. Two of the BCGs (1153 and 1261) in Figure 2 appear to have velocity gradients across their surface, with BCG 1261 being the most obvious example.

Figure 3 shows velocity maps of the BCGs that have bright enough companions to measure the companion's kinematic properties. In each collapsed IFU FOV, the BCG is labeled with the letter A, and then brightest companion is labeled B, and so on. BCG 1048 appears to have one side very red-shifted and the opposite side very blue-shifted, suggesting rotation. Note also that all the companions in Figure 3 appear to exhibit rotation.

The velocity dispersion map (Figure 4) shows very high dispersions in BCG 1048, suggesting a possible ongoing interaction. We also see in Figure 4 a peak in the dispersion near the center of BCG 1261. This peak could be the result of seeing both

⁹ <http://galaxies.physics.tamu.edu/index.php/Jimmy#Code>

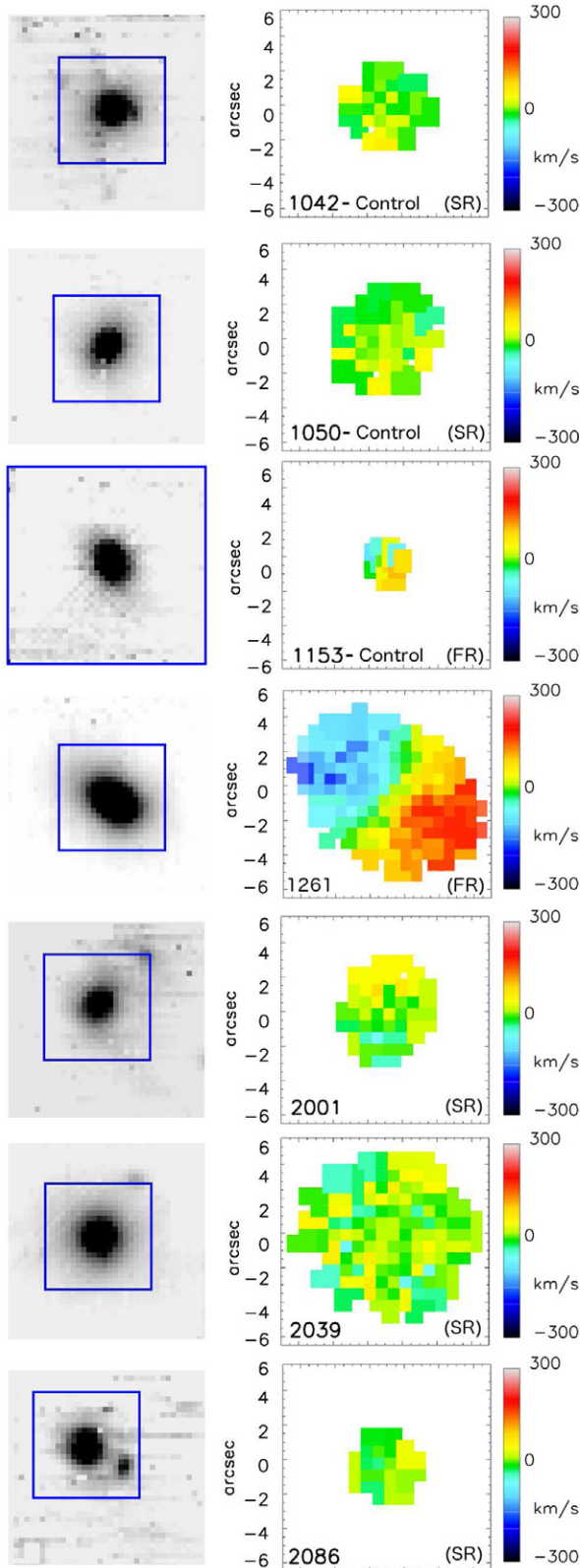


Figure 2. Left: collapsed IFU images showing the full VIMOS FOV with the $12'' \times 12''$ boundary of the velocity maps highlighted in blue. Right: velocity maps of BCGs scaled to $12'' \times 12''$. Only spaxels with a S/N > 10 are shown. BCGs 1050 (SR), 1042 (SR), and 1153 (FR) were chosen as control galaxies with no companions within $10''$. Slow rotating galaxies (1042, 1050, 2001, 2039, 2086) exhibit very little change in velocity across the galaxy, suggesting that these are either completely face-on or dispersion-supported galaxies. In the fast rotating galaxies (1261, 1153) there is a velocity gradient across the major axis, showing evidence of rotation.

(A color version of this figure is available in the online journal.)

the positive and negative velocities on either side of the axis of rotation in the same fiber, enhancing the observed dispersion.

3.2. Angular Momenta (λ_R)

In order to quantify the rotation seen in some of the BCGs mentioned above, we use the λ_R parameter developed by the SAURON team (Emsellem et al. 2007). This parameter acts as a proxy for angular momentum, and is defined as

$$\lambda_R \equiv \frac{\langle R|V| \rangle}{\langle R\sqrt{V^2 + \sigma^2} \rangle}, \quad (1)$$

where R is the distance of the spaxel to the galaxy center, V is the velocity of the spaxel, and σ is the velocity dispersion. The numerator acts as a surrogate for the angular momentum L , and the denominator acts as a mass normalization. The brackets in the numerator and the denominator denote a luminosity weighted average.

The λ_R profile for each BCG and companion galaxy, plotted along with the SAURON results, can be seen in Figure 5. A higher λ_R value indicates higher angular momentum. As expected, angular momentum tends to increase with radius, especially in galaxies classified as FRs. Galaxies that fit into the FR category appear to have a convex profile as λ_R increases with radius, whereas most SR galaxies have a concave profile. Most of our BCGs appear to have profiles consistent with the SR category.

λ_{Re} is the measured angular momentum at the effective radius. In cases where S/N of our measurements drops below 10 before we reach $1R_e$, we assume that value of λ_{Re} is the furthest measured λ_R in that galaxy. This likely gives a minimum value for λ_{Re} because λ_{Re} tends to increase with radius within $1R_e$ as observed in the SAURON results in Figure 5.

The SAURON survey was followed by the ATLAS^{3D} survey, which refined the definition of a fast rotating galaxy to take into account the ellipticity of the galaxy, which the original SAURON definition does not. According to the ATLAS^{3D} definition, the threshold for a FR is

$$\lambda_{Re} > (0.31 \pm 0.01) \times \sqrt{\epsilon_e} \quad (2)$$

(Emsellem et al. 2011), where ϵ_e is the ellipticity at the effective radius (R_e). ϵ is measured by the IDL routine `find_galaxy.pro` written by Michele Cappellari and available as part of the `mge_fit_sectors` package.¹⁰

The λ_{Re} versus ϵ_e plot in Figure 6 shows our quantitative determination of galaxy rotation. Using the ATLAS^{3D} definition, all galaxies above the blue line are classified as FRs. We find that three BCGs and all four companions are FRs. Seven of our BCGs are within one standard deviation of the dividing line, causing us to doubt their classification. For them we consider their λ_R profiles to see if they are concave or convex in order to make our determinations. By the curve criteria, we consider six of these ambiguous galaxies to be SRs. Giving us a final total of three fast rotating BCGs (30%) and four fast rotating companion galaxies (100%).

3.3. Dynamical Mass

Next we examine the relation between a galaxy's dynamical mass and its λ_{Re} measurement. We determine the dynamical

¹⁰ <http://www-astro.physics.ox.ac.uk/~mxc/idl/>

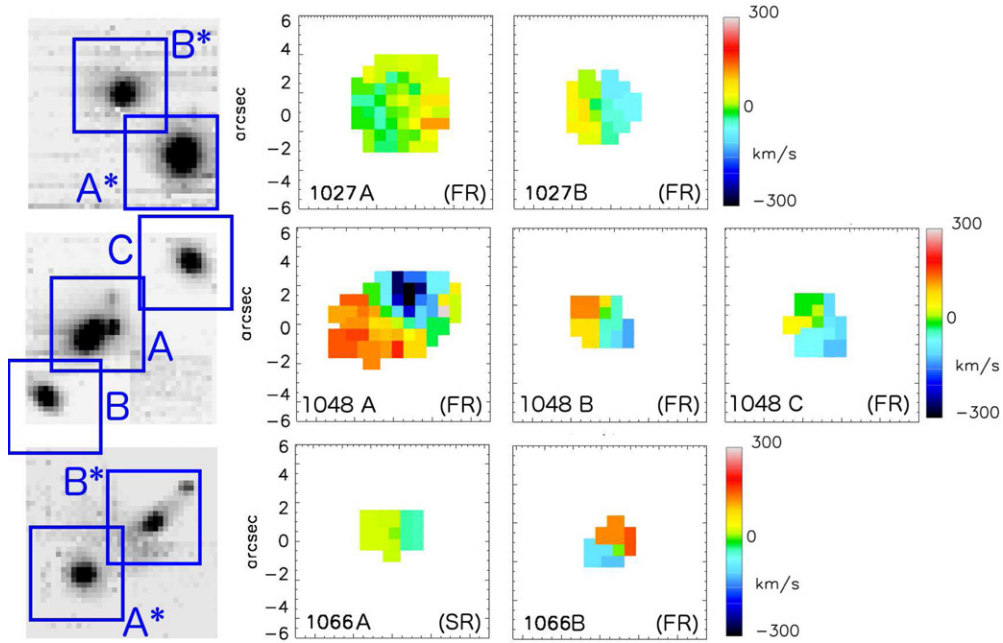


Figure 3. Left: collapsed IFU images showing the full VIMOS FOV with the $12'' \times 12''$ boundary of the velocity maps highlighted in blue. Right: velocity maps of BCGs scaled to $12'' \times 12''$. BCGs are labeled with the letter A, the brightest companion is labeled B, and so on. BCG 1048, as well as the companions of the BCGs in clusters 1027, 1048, and 1066 all show signs of rotation. Both companions of 1066 and 1027 were shown to be bound to their BCG neighbor in Brough et al. (2011). However, neither outer companions are gravitationally bound to BCG 1048. Bound systems are indicated with a star in collapsed IFU images. Velocities shown for each galaxy are relative to the individual galaxy’s redshift, and not absolute across the whole system.

(A color version of this figure is available in the online journal.)

mass of the galaxy by using the equation provided by Cappellari et al. (2006):

$$M_{\text{dyn}} = \frac{5R_e\sigma_e^2}{G}. \quad (3)$$

R_e is the effective radius, σ_e is the aperture corrected velocity dispersion at the effective radius, and G is the gravitational constant. The factor of five is a parameter that scales between the virial and Schwarzschild M/L estimates. According to theory it should be 5.953, however, those calculations assume perfect one-component isotropic spherical systems, whereas 5 is found to be a good fit for observed galaxies (Cappellari et al. 2006). In order to compensate for the fact that most of our velocity dispersions reported are measured at $R < R_e$, we have applied the aperture correction from Equation (1) of Cappellari et al. (2006) to our velocity dispersion results.

Dynamical mass results for each galaxy are listed in Table 2. In Figure 7 we have plotted λ_{R_e} as a function of dynamical mass. We also plot dynamical masses from the SAURON survey (Emsellem et al. 2007) and derived dynamical masses from the reported ATLAS^{3D} velocity dispersions (Cappellari et al. 2013). Figure 7 shows that the majority of the galaxies reported in this study fall on the high mass end of the ATLAS^{3D} survey sample. Eight galaxies in our sample have dynamical masses above $10^{11.5} M_{\odot}$. In the SAURON and ATLAS^{3D} results there appears to be a ceiling at approximately $M_{\text{dyn}} = 10^{11.5} M_{\odot}$ at which point galaxies were much less likely to be classified as FRs (3/13 (23%) in Emsellem et al. 2011). In agreement with the findings of the ATLAS^{3D} survey, we find that only 25% of galaxies in our sample above $10^{11.5} M_{\odot}$ are classified as fast rotating.

3.4. Photometry

To perform our analysis of the spectroscopic data, we have to also examine the photometric data in order to determine

the effective radius of each galaxy. The single component de Vaucouleurs models produced by GALFITs and residual images can be seen in Figure 8. In Figure 8 one can also see the tidal tails (BCG 1027) and multiple cores (BCG 1048) which motivated us to search for a quantifiable way to measure recent and ongoing mergers. We find that a single de Vaucouleurs profile is unable to properly model BCG 1048, and the residual image shows multiple hidden cores. To properly model BCG 1048, we instead use four spatially separated de Vaucouleurs profiles. We report both the single de Vaucouleurs results as well as the results for component A4, brightest of the four profiles, in parenthesis in Tables 2 and 3.

3.4.1. $G - M_{20}$ Analysis

The $G - M_{20}$ analysis searches for irregularities in the distribution of light which correlate to morphological signatures of merging. Our $G - M_{20}$ analysis is performed using PyMorph. For a galaxy to be classified as a merger candidate it must have

$$G > -0.14M_{20} + 0.33 \quad (4)$$

(Lotz et al. 2008). As can be seen in Table 3, BCG 1048 (FR) is confirmed to be a merger case by the $G - M_{20}$ selection criteria, as is BCG 2086 (SR). The other merging candidates are companions to BCGs 1027 (SR), 1066 (SR), and 2086 (SR).

BCG 1261, our fastest rotating galaxy, shows no signs of merging in the $G - M_{20}$ classification. According to Lotz et al. (2011), for our gas-poor galaxies, this suggests no recent mergers within the last 0.2 Gyr by the $G - M_{20}$ classification. That would suggest that any mergers with this $z = 0.04$ galaxy would have had to happen before $z = 0.06$.

Therefore, 40% (4/10) of the systems in our sample show morphological signs of current or very recent mergers. Based on the original unbiased sample of 625 BCGs from von der Linden et al. (2007), we find a lower limit of $0.64\% \pm 0.32\%$ of BCGs

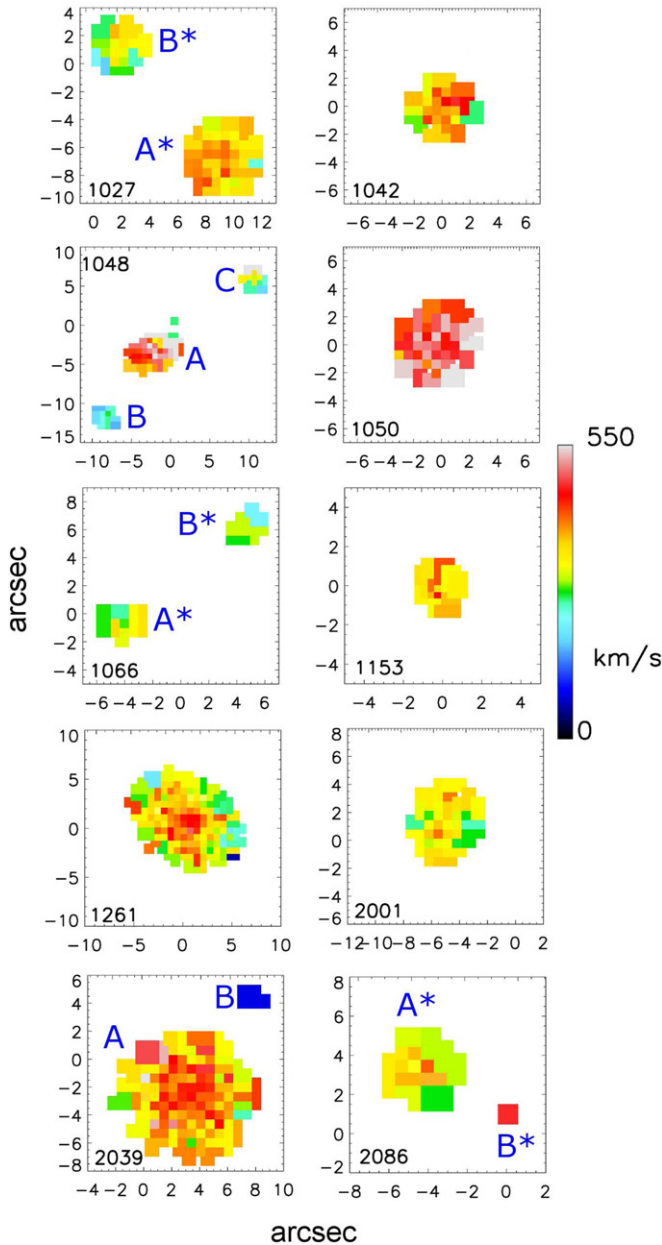


Figure 4. Velocity dispersion maps of each galaxy. BCGs are labeled A, the brightest companion is labeled B, and so on. Bound systems are indicated with a star. In BCG 1261 there is a rise in the dispersion in the center of the BCG, suggesting that the velocity gradient seen in the velocity maps is due to rotation. (A color version of this figure is available in the online journal.)

are currently undergoing or have undergone a merger within the last 0.2 Gyr. Although this subsample is biased toward merging galaxies and not representative of the entire BCG sample, we consider it significant that it is consistent with simulations of BCGs from De Lucia & Blaizot (2007) that showed a 1.47% merger rate within the same 0.2 Gyr time period (assuming a constant merger rate from $z = 0.5$ to $z = 0$) as well as observational results from Liu et al. (2009) that showed a 0.63% BCG major merger rate within 0.2 Gyr (assuming a constant merger rate from $z = 0.12$ to $z = 0.03$).

3.5. Boundedness

By utilizing the information from both the photometric and the kinematic results, we are able to determine whether the companion galaxies are likely to be bound to the BCG. The

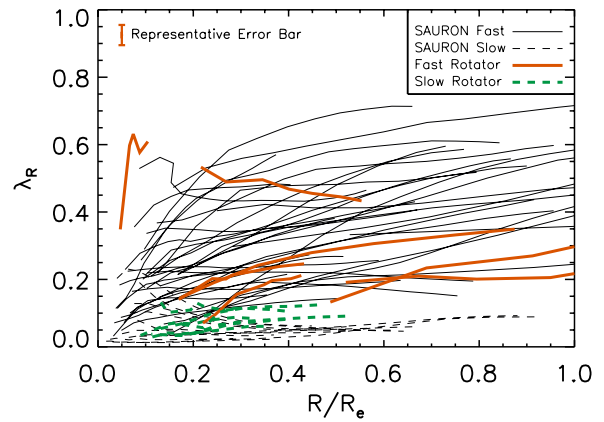


Figure 5. Angular momentum profile. Our sample of galaxies are plotted with thick orange and green lines. The SAURON sample is plotted in gray. We choose not to plot the full ATLAS^{3D} sample of 260 galaxies in order to keep the plot legible. Fast rotators are plotted as solid lines and slow rotators are plotted as dashed lines. Fast rotators have a convex profile, and slow rotators have a concave profile. (A color version of this figure is available in the online journal.)

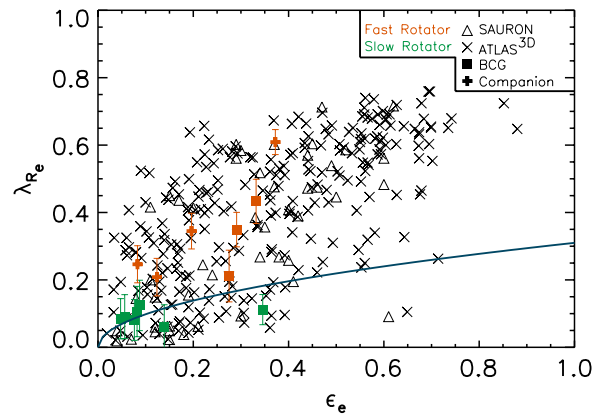


Figure 6. λ at the effective radius as a function of ellipticity, also measured at the effective radius. SAURON galaxies are plotted as triangles, ATLAS^{3D} galaxies are plotted as crosses, BCGs from this study are plotted as squares, and companion galaxies from this study are plotted as plus symbols. The blue line indicates the division between fast rotating and slow rotating galaxies. We find that three BCGs (1048, 1153, 1261) and four companions (1027, 1066, 1048) are classified as fast rotators. (A color version of this figure is available in the online journal.)

criteria for being gravitationally bound is

$$V_r R_p \leq 2GM \sin^2 \alpha \cos \alpha \quad (5)$$

(Beers et al. 1982). V_r is the radial velocity offset between the two galaxies, R_p is the projected radial separation between the two galaxies, M is the dynamical mass, G is the gravitational constant, and α is the angular separation between the two galaxies. By integrating over all possible values of α , we can find the probability that a companion galaxy will be gravitationally bound to the BCG.

The same analysis was performed by Brough et al. (2011) for BCGs 1027, 1066, and 2086, in which they found that systems 1027 and 1066 were likely to be bound, but 2086 was not. In performing our analysis, we find that indeed the companion to BCG 1027 has a 65% chance of being bound, the companion to BCG 1066 has a 94% chance of being bound, and the companion to BCG 2086 has a 56% chance of being bound. We also find in addition that the two outer companions to BCG 1048 (1048 B and 1048 C) never cross the threshold outlined in Equation (5)

Table 2
Kinematic Properties of BCGs and Companions

Galaxy	R_e (") ± 0.01	Redshift ± 0.0001	σ_e (km s $^{-1}$)	$\log(M)$ ($\log(M_\odot)$) ± 0.01	ϵ ± 0.01	λ_{Re}	FR/SR
1027 BCG*	6.98	0.0900	227 ± 7	11.79	0.08	0.12 ± 0.08	SR
1027 Comp*	4.39	0.0909	190 ± 6	11.17	0.08	0.24 ± 0.06	FR
1042 BCG	7.22	0.0947	227 ± 7	11.83	0.05	0.08 ± 0.06	SR
1048 (A4) ^a BCG*	5.17 (3.40) ^a	0.0774	319 ± 7	11.59	0.33	0.46 ± 0.06	FR
1048 Comp	1.08	0.0801	167 ± 3	10.51	0.20	0.34 ± 0.05	FR
1048 Comp	1.24	0.0746	124 ± 3	10.54	0.12	0.21 ± 0.06	FR
1050 BCG	8.43	0.0722	291 ± 11	11.78	0.14	0.07 ± 0.07	SR
1066 BCG*	5.07	0.0838	186 ± 9	11.62	0.35	0.12 ± 0.05	SR
1066 Comp*	11.25	0.0836	176 ± 13	11.55	0.37	0.60 ± 0.04	FR
1153 BCG	2.39	0.0591	226 ± 7	11.14	0.28	0.21 ± 0.08	FR
1261 BCG	5.76	0.0371	271 ± 1	11.32	0.29	0.35 ± 0.05	FR
2001 BCG	5.84	0.0415	200 ± 4	11.38	0.09	0.13 ± 0.07	SR
2039 BCG	8.82	0.0829	248 ± 6	11.86	0.06	0.10 ± 0.07	SR
2086 BCG*	4.83	0.0839	203 ± 7	11.60	0.08	0.09 ± 0.06	SR

Notes. Kinematic results from a combination of IDL routines. R_e is derived from photometric results, but listed here as it is relevant to many values calculated in this table. (*) Galaxies with an asterisk next to their name are gravitationally bound to their neighboring galaxy.

^a The effective radius reported in parenthesis for BCG 1048 is for component A4 only, and not the entire BCG.

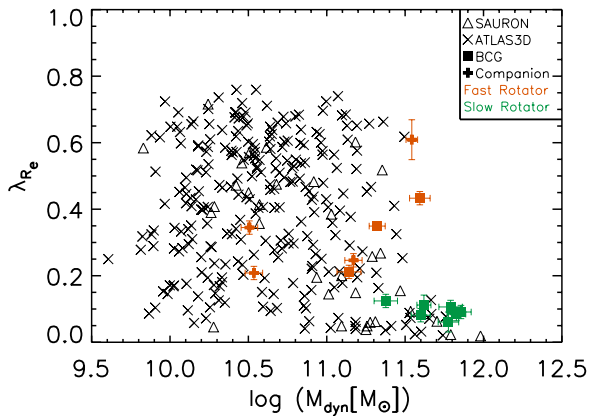


Figure 7. Angular momentum parameter, λ_{Re} vs. dynamical mass, M_{dyn} . SAURON galaxies are plotted as triangles, ATLAS^{3D} galaxies are plotted as crosses, BCGs from this study are plotted as squares, and companion galaxies from this study are plotted as plus symbols. The galaxies presented here are amongst the most massive studied. An upper mass limit to fast rotating galaxies can be seen in all samples around approximately $M_{\text{dyn}} = 10^{11.5} M_\odot$.

(A color version of this figure is available in the online journal.)

and are therefore unlikely to be bound to BCG 1048 A. As seen in Figure 8, BCG 1048 A is comprised of four components, the most massive being 1048 A2, A3, and A4 which together make up the galaxy which we call BCG 1048. We find that component 1048 A3 has an 80% chance of being bound to 1048 A4.

4. DISCUSSION

Since the formation history of BCGs is not completely understood, and is in some places contradictory, this research provides vital clues to solving this mystery. If BCGs form via mostly dry minor mergers where up to half of their mass is accreted isotropically, then most of the initial angular momentum will be removed and we would not expect to see very massive BCGs with high values of λ_{Re} . If, however, there are many major merger events with similar orbital parameters to cause a higher angular momentum in the newly formed galaxy despite the lack of gas, then large scale rotation could still be

present today. A third possibility is that there is no connection between merger history and a galaxy’s classification as a FR or SR, in which case we would have to look for an outside cause to remove angular momentum.

4.1. Mergers and Rotation

From the combination of kinematic and photometric results, it appears that BCGs have diverse recent merging histories. This is unexpected considering their similarities in luminosities and stellar population. BCGs 1261, 1048, and 1153 are our highest λ_{Re} BCGs and it appears that their high λ_{Re} values come from different sources. Simulations show that very gas-rich major mergers (Cox et al. 2006; Robertson et al. 2006) and certain gas-poor major mergers (Bois et al. 2011) produce fast rotating galaxies. Since we do not see any evidence for gas emission lines in any of the galaxies in our sample, we assume that they are still gas-poor. Below we will discuss specific examples of the various combinations of merging and angular momentum, demonstrating that there is little correlation between the two observables (Figure 9).

4.1.1. Fast Rotators with No Mergers

BCGs 1261 and 1153 are both FRs with no evidence of recent mergers. The photometry for these fast rotating galaxies as measured by $G - M_{20}$ indicates a quiet recent merger history, i.e., no major dry merger events within the last ~ 0.2 Gyr (Lotz et al. 2011), and no currently occurring mergers. With our limited timescale we do not have enough information to determine how these fast rotating but very massive BCGs formed. An analysis of these merger quiet fast rotating BCGs’ stellar population would determine whether or not these BCGs are indeed dominated by old stellar populations.

4.1.2. Fast Rotators with Mergers

The counterpoint to our fast rotating, quiet history BCGs is BCG 1048 (FR), which is currently undergoing a minor merger. The multiple cores (A1–A4) present in BCG 1048 (Figure 8) suggest an ongoing dry minor merger event, which is coincident with the high λ_{Re} value we measure. This is further supported by the $G - M_{20}$ selection of BCG 1048 A1–A4 as a merging

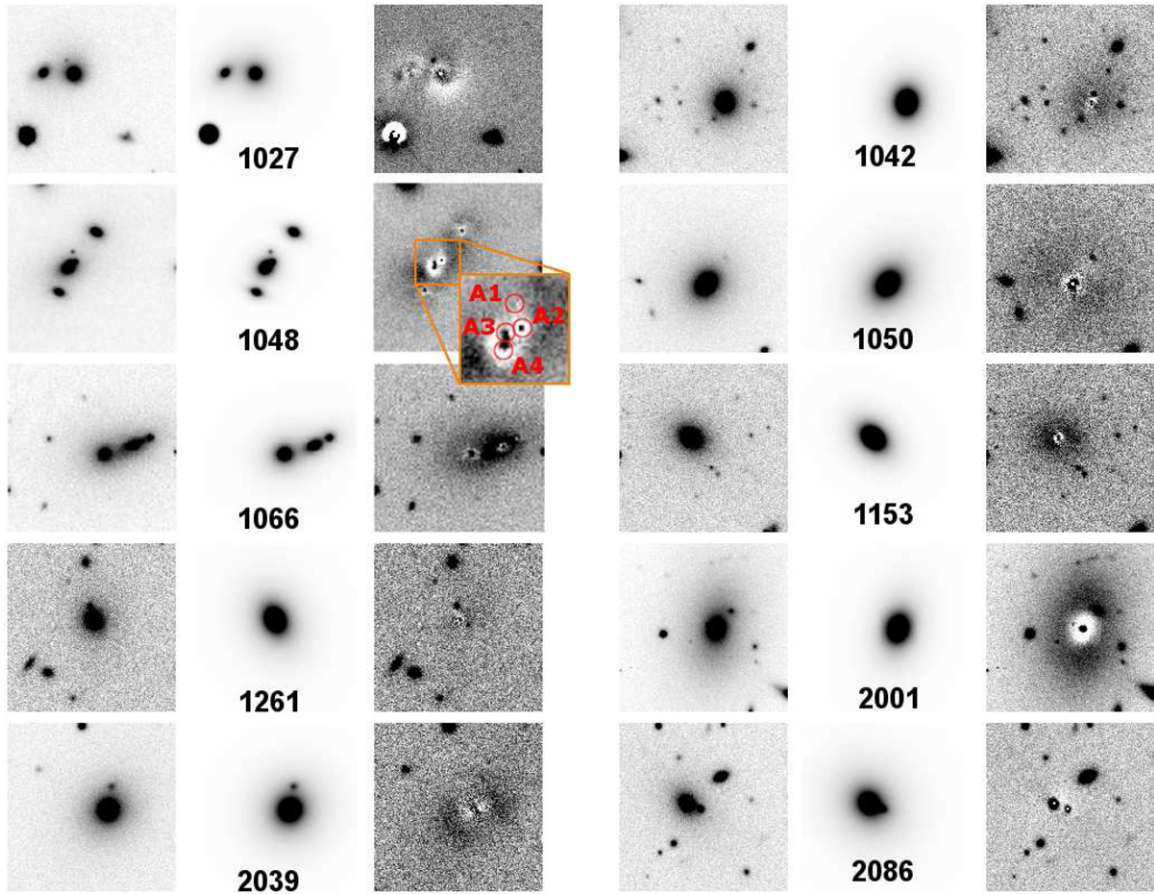


Figure 8. Single component de Vaucouleurs fits. Photometric SDSS r -band images of each galaxy is shown on the left-hand side for each set. The middle image is the best fitting de Vaucouleurs model produced by GALFIT, and the right-hand side of each set shows the residuals after the GALFIT model has been subtracted from each galaxy. Each image is $60'' \times 60''$. BCG 1048 (FR) is shown modeled by four de Vaucouleurs profiles labeled A1–A4 with the center of each profile indicated by the red circles. Excess light can be seen between components A3 and A4. Excess light can also be seen in the outskirts of BCGs 1027 (SR), 1048 (FR), 1066 (SR), and 2001 (SR), suggesting ongoing or very recent merger event.

(A color version of this figure is available in the online journal.)

Table 3
Photometric Properties of BCGs and Companions

Galaxy	R_e ($''$) ± 0.01	Integrated Magnitude ± 0.01	G ± 0.01	M_{20} ± 0.01	Merging?
1027 BCG*	6.98	16.11	0.568	-1.80	n
1027 Comp*	4.39	17.38	0.574	-1.69	y
1042 BCG	7.22	16.47	0.602	-2.26	n
1048 (A4) ^a BCG*	5.17 (3.40) ^a	16.47 (17.07) ^a	0.609	-1.85	y
1048 Comp	1.08	18.10	0.593	-2.11	n
1048 Comp	1.24	17.60	0.604	-2.03	n
1050 BCG	8.43	15.31	0.616	-2.40	n
1066 BCG*	4.95	16.95	0.617	-2.21	n
1066 Comp*	11.95	17.05	0.613	-1.83	y
1153 BCG	2.39	17.22	0.626	-2.35	n
1261 BCG	5.76	17.36	0.576	-2.38	n
2001 BCG	5.84	15.75	0.527	-2.20	n
2039 BCG	8.82	15.63	0.559	-2.17	n
2086 BCG*	4.83	16.95	0.652	-1.37	y

Notes. Photometric results from SExtractor, GALFIT, and PyMorph. The effective radius and integrated magnitude come from the de Vaucouleurs fits, where as the Gini and M_{20} values come from PyMorph. (*) Galaxies with an asterisk next to their name are gravitationally bound to their neighboring galaxy.

^a The effective radius reported in parenthesis for BCG 1048 is for component A4 only, and not the entire BCG.

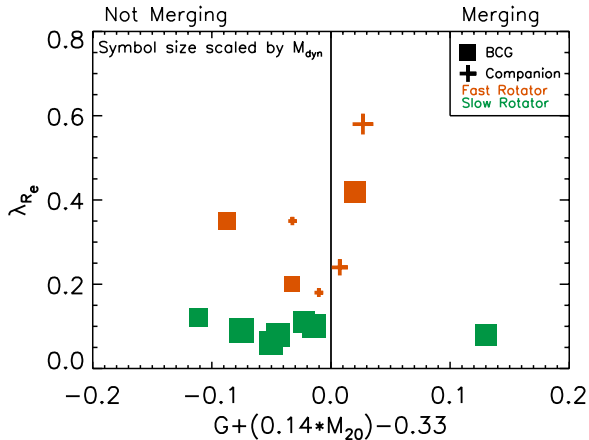


Figure 9. Merger status and angular momentum at the effective radius. BCGs are plotted as squares, and companions are plotted as crosses. Plot symbols are scaled according to galaxy mass, with a larger symbol indicating a higher dynamical mass. Plot symbols are also color coded, with orange indicating a fast rotating galaxy, and green indicating a slow rotating galaxy. Galaxies plotted on the negative side of the x -axis are classified as not merging by the $G - M_{20}$ criteria, galaxies on the positive side of the x -axis are classified as merging. There appears to be no correlation between merging and λ_{Re} .

(A color version of this figure is available in the online journal.)

system and the high likelihood that the system is bound. It is uncertain whether or not the high λ_{Re} value observed in BCG 1048 is the result of actual stellar rotation, or merely the result of having a slightly blue-shifted core located near a slightly redshifted core as we do not see the same clear velocity gradient as observed in BCG 1261 (FR).

In order to properly model BCG 1048 (FR) in GALFIT, we require four spatially separated components. By summing the light coming from each model component and assuming that the M/L ratio is the same across the entire BCG, we find evidence for a minor 1:8 merger taking place between A3 and A4. The other two inner companions, A1 and A2, have mass ratios of approximately 1:8 (A2) and 1:30 (A1) as compared to the central brightest core (A4). We also find that neither of the outer companion galaxies cross the threshold to be bound to the central merging BCG system for any value of α , and they are unlikely to merge in the future. Despite the fact that the two outermost companions will not merge, the excess light between components A2, A3, and A4 in the central core still shows that this system is actively merging and accreting matter.

For close merging galaxies such as BCG 1048, it is reasonable to question whether the observed kinematic properties, such as velocity dispersion, are artificially inflated by the ongoing merger. Considering this complication, it is likely that determinations of λ_{Re} for merging systems would not be a robust quantity, and that it may change throughout the merging process. The measured ellipticity is also likely to be affected during the merging process, causing the BCG to appear to be more elliptical because we are observing two galaxies superimposed upon each other. However, artificially inflating the ellipticity would only serve to increase the threshold for it to be considered a fast rotating galaxy, and would not accidentally classify a slow rotating galaxy as a fast rotating galaxy.

4.1.3. Slow Rotators without Mergers

Our slow rotating galaxies have a similarly mixed merging history. We see that BCGs 1042, 1050, 2001, and 2039 are SRs with no evidence of a recent merging event in the $G - M_{20}$

classification, although BCGs 2001 (SR) and 2039 (SR) show a significant amount of enhanced intra-cluster light. As our results are limited to within $1R_e$, we are uncertain if it is just the core that is slowly rotating, or if the outer halo is similarly slowly rotating. IFU measurements of the extended disks seen in BCGs 2001 (SR) and 2039 (SR) could help confirm the results of Bournaud et al. (2004) in which they found that mergers tend to redistribute angular momentum to the outer regions of a galaxy.

4.1.4. Slow Rotators with Mergers

BCGs 1027, 1066, and 2086 are slow rotating galaxies currently undergoing a minor merging event according to the $G - M_{20}$ criteria. All three companions were found to have a more than 50% chance of being bound to the BCG, adding evidence to the possibility of a minor merger in the future. Although we do not have enough spaxels with S/N over 10 to determine the rotation of the companion galaxy to BCG 2086, both BCGs 1027 and 1066 are slow rotating BCGs with a fast rotating companions. BCG 1027 (FR) exhibits tidal tails in the residual photometry, a slight velocity gradient seen in the BCG, and more extreme rotation seen in the companion. The companion to BCG 1066 (SR) is also a fast rotating galaxy, and appears under visual inspection of the residuals to have two cores, much like the case of BCG 1048 (FR).

4.2. Companion Rotation

Companions of BCGs 1066, 1027, and 1048 show clear signs of rotation, both visually and in their λ_R results. Every BCG companion that we have sufficient data to measure λ_R is a fast rotating galaxy. Although we have a limited number of spaxels to measure the rotation in BCG 1066, the analysis presented in Brough et al. (2011) provides more spaxels, showing that both companions of 1066 and 1027 are FRs. Our data indicates that all elliptical galaxies near BCGs are FRs, however we have an admittedly small sample size of only four companion galaxies to make that determination.

4.3. Angular Momentum and Dynamical Mass

The presence of fast rotating BCGs in our sample was quite unexpected considering our initial assumption that BCGs should be mostly dispersion supported. Although, when comparing our measurements of λ_{Re} and M_{dyn} in BCGs to the SAURON and ATLAS^{3D} samples of early-type galaxies (Figure 7), we find that our sample is generally consistent with their results. There appears to be a limit around $M_{dyn} = 10^{11.5} M_{\odot}$ above which there are virtually no galaxies with a high angular momentum, independent of whether or not they are BCGs. The two galaxies that we do find slightly above this limit are both within 1σ , and both currently in the process of merging, causing some doubt that they are actually as massive as measured.

In observing these very massive galaxies, in extreme environments, at distances further than what had been measured before, our results suggest that λ_{Re} would be influenced more by a galaxy's dynamical mass than its location within a cluster, and that this is consistent across samples of galaxies that were selected using differing criteria. The SAURON and ATLAS^{3D} surveys focused on early-type galaxies in general and measured only one BCG, whereas we examined a sample of 10 BCGs at higher redshift. Larger galaxies likely formed as a result of more mergers than smaller galaxies, therefore they have a higher likelihood of losing their initial angular momentum. Peng et al. (2010) have also shown that above $M_* = 10^{11} M_{\odot}$ there is a

change in the ratio of galaxy mass assembled via post-quenched galaxy mergers, also suggesting that these dry merging events could be responsible for removing the angular momentum.

Conversely, Martizzi et al. (2012) have used simulations to show that AGN are a possible mechanism for removing angular momentum from large galaxies. Having shown in our sample examples of dry mergers that exhibit a high λ_{Re} measurement, it is possible that a different process, such as AGN, are responsible for turning fast rotating galaxies into SRs. It would be interesting and relatively straightforward to test for the presence of the $M_{\text{dyn}} = 10^{11.5} M_{\odot}$ limit for FRs observed within these samples using such simulations, and to see if the presence of AGN in simulations has any effect on the reproducibility of this limit.

In a further study using higher resolution photometry, we would like to measure which galaxies are cuspy and which are cored as in Lauer (2012). It is possible that AGN are responsible for both building the core, as well as removing angular momentum at the same time. Initial results suggest that our sample of galaxies follow the same relationship seen in the ATLAS^{3D} sample, in that all cored galaxies are SRs, but not all SRs are cored. However higher resolution photometry than the SDSS imaging is needed in order to properly make the cuspy/cored determination.

Also in Lauer (2012) they discuss the possibility that the division between FRs and SRs should be set at a constant $\lambda_{Re/2} = 0.25$. Using this alternative selection criteria, we would find two fast rotating BCGs (20%), and two fast rotating companion galaxies (50%). Under this higher threshold, the main message of our results would change little. The majority of the BCGs that we studied would be slow rotating, however we would still find fast rotating BCGs. Similarly, 25% of the galaxies we studied above $M_{\text{dyn}} = 10^{11.5} M_{\odot}$ would continue to be FRs.

Another possible issue to consider is that in some cases, such as BCG 1048 and the companion to BCG 1066, the galaxies contain multiple cores from ongoing mergers, which could cause the λ_{Re} measurements to be artificially inflated. This would also artificially increase our measurements of M_{dyn} . It is also possible that our measurements for λ_{Re} for these galaxies will shift as they become dynamically relaxed post-merger. An examination of λ_{Re} values pre-merger, peri-merger, and post-merger in simulations may shed light on how much of an effect dry mergers would have on λ_{Re} results. In our analysis, we consider these merging systems, such as BCG 1048 and companion 1066 to be one galaxy because they are currently in the process of merging.

4.4. Cluster Rotation

Another factor to consider would be the angular momentum of the cluster as a whole. If the angular momentum of a BCG at the kinematic center of a cluster coincides with the average angular momentum of the entire cluster, then infalling galaxies merging with the BCG would likely contribute to the angular momentum of the BCG instead of subtracting from it. It would be interesting to study the angular momentum of the whole cluster of our best example of a fast rotating BCGs, such as 1261, to see if the angular momentum of the cluster aligns with the angular momentum of the BCG. Such measurements would require new observations with a much wider FOV. An instrument such as SAMI (Croom et al. 2012) with deployable fiber bundles would allow us to collect IFU observations of spatially separated objects across a much wider FOV, e.g., to observations beyond $1R_e$ for many of the galaxies in our sample.

We have observed that BCGs are surprisingly diverse in their photometric and kinematic properties. We intend to continue our study of these BCGs by conducting an analysis of their stellar populations in order to further understand their merger history.

5. CONCLUSION

In this study we present 2D kinematic and photometric maps of BCGs, ranging in redshift from $z = 0.04$ to $z = 0.09$ (Figures 2, 3, and 8). BCGs are expected to undergo more dry minor mergers than a typical elliptical galaxy, and dry minor mergers have been shown in simulations to decrease a galaxy's angular momentum (Bournaud et al. 2007; Jesseit et al. 2009; Bois et al. 2010, 2011). As the result of many dry minor mergers, we do not expect BCGs to be fast rotating galaxies (as defined by ATLAS^{3D}; Emsellem et al. 2011). We use our sample of 10 BCGs (selected from the SDSS-C4-DR3 catalog (Miller et al. 2005) of BCGs with companions within $10''$) and their companions to search for a connection between angular momentum, dynamical mass, and very recent merger history.

Using observations from the VIMOS IFU spectrograph (Le Fèvre et al. 2003) on the VLT we calculate the λ_R values that act as a proxy for angular momentum (Emsellem et al. 2007) (Figure 5). We measure λ_{Re} , λ_R at $1R_e$, and find λ_{Re} values ranging from 0.07 ± 0.07 to 0.60 ± 0.04 out of a possible range 0.0–1.0 (Figure 6). We have shown that 30% (3/10) of BCGs show signs of galaxy scale rotation and fit the ATLAS^{3D} definition of a fast rotating galaxy and the other 70% of our BCGs are slow rotating galaxies. We find the rather surprising result that 100% (4/4) of our companion galaxies are fast rotating.

Using velocity dispersion (Figure 4), we calculate M_{dyn} for our sample of galaxies by use of Equation (3), finding dynamical masses up to $M_{\text{dyn}} = 10^{11.9} M_{\odot}$. BCGs are some of the most massive galaxies in the universe, and the BCGs in our sample are among the most massive galaxies to have their angular momentum calculated using λ_R (Figure 7).

While we do find a small number of fast rotating BCGs (Figure 7), we find fewer fast rotating galaxies above $M_{\text{dyn}} = 10^{11.5} M_{\odot}$, consistent with the previous limit for fast rotating galaxies in the SAURON and ATLAS^{3D} sample (Emsellem et al. 2007; Cappellari et al. 2013). There appears to be an upper limit to how massive a galaxy can be while still maintaining a high angular momentum. The consistency between our results and that of the ATLAS^{3D} survey suggests that a galaxy's mass may be more significant than its position inside a cluster halo in determining angular momentum.

Next we examine the ongoing and recent merging history of the galaxies in our sample using the $G - M_{20}$ merger selection criteria (Lotz et al. 2008). We see that 40% (4/10) of systems in our sample are currently undergoing or have undergone a merger within the last 0.2 Gyr (Figure 9). Although our sample selection is biased toward BCGs that have companions, based on the original unbiased sample of 625 BCGs (von der Linden et al. 2007), we find that at least $0.64\% \pm 0.32\%$ of BCGs are undergoing a merger, consistent with observations of BCGs by Liu et al. (2009). We use these merging results to examine the connection between λ_{Re} and $G - M_{20}$.

We find no correlation between λ_{Re} and $G - M_{20}$. We find in one BCG that the minor merger event is likely responsible for the high λ_{Re} value observed in the BCG and its companions. Conversely we find two BCGs that are fast rotating without any recent or ongoing merger events. In the slow rotating BCG

category we find three mergers connected to a slow rotating BCG, and four examples of slow rotating BCGs without any mergers.

These diverse characteristics suggest that there is no strong connection between recent dry mergers and the λ_{Re} classification as a FR or SR. It is possible that complications from an unrelaxed dynamical system have skewed λ_{Re} measurements in merging systems, or that the removal of angular momentum is due to some other physical process (such as AGN; Martizzi et al. 2012) and not predominately due to mergers. Increased resolution photometry would allow us to measure the cores of these galaxies to see if they are either cusp or cored in order to test the hypothesis of Lauer (2012).

These surprising results provide clues as to the formation history of BCGs. It would be beneficial to have an increased sample of BCGs to add to our results, especially BCGs with companions, and more measurements of the companions to determine the probability of a bound BCG companion being a FR. A larger sample size would also allow us to investigate the possible limit above which fast rotating galaxies do not exist. Further studies of the ages of the stellar population of seemingly merger quiet galaxies would assist us in understanding their merger histories beyond 0.2 Gyr. Our observations lead us to conclude that there is much diversity in the measurements of a BCG's angular momentum, dynamical mass, and merger history (Figure 9).

We thank the VIMOS team for their pipeline, and GitHub for hosting the code used to reduce the data. We also thank Brett Salmon and Adam Tomczack for their assistance throughout the process of writing this paper. We also thank Louis Abramson for assistance with GALFIT and Source Extractor. We thank Todd Lauer for his feedback concerning earlier drafts of this work. We thank our referee, Eric Emsellem, for his excellent feedback, which helped to clarify our narrative as well as our results.

The data reduction performed to obtain our results was done on the Brazos supercomputing cluster at Texas A&M university. We would especially like to thank the Mitchell family for their continuing support and in particular the late George P. Mitchell whose vision and commitment to science and astronomy leaves a lasting legacy.

REFERENCES

- Abraham, R. G., van den Bergh, S., & Nair, P. 2003, *ApJ*, 588, 218
 Beers, T. C., Geller, M. J., & Huchra, J. P. 1982, *ApJ*, 257, 23
 Bender, R., Burstein, D., & Faber, S. M. 1992, *ApJ*, 399, 462
 Bernardi, M. 2009, *MNRAS*, 395, 1491
 Bertin, E., & Arnouts, S. 1996, *A&AS*, 117, 393
 Bois, M., Bournaud, F., Emsellem, E., et al. 2010, *MNRAS*, 406, 2405
 Bois, M., Emsellem, E., Bournaud, F., et al. 2011, *MNRAS*, 416, 1654
 Bournaud, F., Combes, F., & Jog, C. J. 2004, *A&A*, 418, L27
 Bournaud, F., Jog, C. J., & Combes, F. 2007, *A&A*, 476, 1179
 Boylan-Kolchin, M., Ma, C.-P., & Quataert, E. 2006, *MNRAS*, 369, 1081
 Brough, S., Collins, C. A., Burke, D. J., Lynam, P. D., & Mann, R. G. 2005, *MNRAS*, 364, 1354
 Brough, S., Tran, K.-V., Sharp, R. G., von der Linden, A., & Couch, W. J. 2011, *MNRAS*, 414, L80
 Cappellari, M., Bacon, R., Bureau, M., et al. 2006, *MNRAS*, 366, 1126
 Cappellari, M., & Copin, Y. 2003, *MNRAS*, 342, 345
 Cappellari, M., & Emsellem, E. 2004, *PASP*, 116, 138
 Cappellari, M., Scott, N., Alatalo, K., et al. 2013, *MNRAS*, 432, 1709
 Cox, T. J., Dutta, S. N., Di Matteo, T., et al. 2006, *ApJ*, 650, 791
 Croom, S. M., Lawrence, J. S., Bland-Hawthorn, J., et al. 2012, *MNRAS*, 421, 872
 de Jong, R. S., Kassim, S., Bell, E. F., & Courteau, S. 2004, in IAU Symp. 220, Dark Matter in Galaxies, ed. S. Ryder, D. Pisano, M. Walker, & K. Freeman (San Francisco, CA: ASP), 281
 De Lucia, G., & Blaizot, J. 2007, *MNRAS*, 375, 2
 Desroches, L.-B., Quataert, E., Ma, C.-P., & West, A. A. 2007, *MNRAS*, 377, 402
 D'Onghia, E., & Burkert, A. 2004, *ApJL*, 612, L13
 Doroshkevich, A. G. 1970, *Ap*, 6, 320
 Emsellem, E., Cappellari, M., Krajnović, D., et al. 2007, *MNRAS*, 379, 401
 Emsellem, E., Cappellari, M., Krajnović, D., et al. 2011, *MNRAS*, 414, 888
 Faber, S. M., Tremaine, S., Ajhar, E. A., et al. 1997, *AJ*, 114, 1771
 Izzo, C., Kornweibel, N., McKay, D., et al. 2004, *Msngr*, 117, 33
 Jesseit, R., Cappellari, M., Naab, T., Emsellem, E., & Burkert, A. 2009, *MNRAS*, 397, 1202
 Kormendy, J., & Bender, R. 1996, *ApJL*, 464, L119
 Lauer, T. R. 2012, *ApJ*, 759, 64
 Lauer, T. R., Faber, S. M., Richstone, D., et al. 2007, *ApJ*, 662, 808
 Le Fèvre, O., Saisse, M., Mancini, D., et al. 2003, *Proc. SPIE*, 4841, 1670
 Lidman, C., Suherli, J., Muzzin, A., et al. 2012, *MNRAS*, 427, 550
 Liu, F. S., Mao, S., Deng, Z. G., Xia, X. Y., & Wen, Z. L. 2009, *MNRAS*, 396, 2003
 Lotz, J. M., Jonsson, P., Cox, T. J., & Primack, J. R. 2008, *MNRAS*, 391, 1137
 Lotz, J. M., Jonsson, P., Cox, T. J., et al. 2011, *ApJ*, 742, 103
 Martizzi, D., Teyssier, R., & Moore, B. 2012, *MNRAS*, 420, 2859
 Miller, C. J., Nichol, R. C., Reichart, D., et al. 2005, *AJ*, 130, 968
 Naab, T., Jesseit, R., & Burkert, A. 2006, *MNRAS*, 372, 839
 Oegerle, W. R., & Hoessel, J. G. 1991, *ApJ*, 375, 15
 Peebles, P. J. E. 1969, *ApJ*, 155, 393
 Peng, C. Y., Ho, L. C., Impey, C. D., & Rix, H.-W. 2002, *AJ*, 124, 266
 Peng, Y.-j., Lilly, S. J., Kovač, K., et al. 2010, *ApJ*, 721, 193
 Robertson, B., Cox, T. J., Hernquist, L., et al. 2006, *ApJ*, 641, 21
 Sánchez-Blázquez, P., Peletier, R. F., Jiménez-Vicente, J., et al. 2006, *MNRAS*, 371, 703
 Stott, J. P., Collins, C. A., Burke, C., Hamilton-Morris, V., & Smith, G. P. 2011, *MNRAS*, 414, 445
 Tacconi, L. J., Genzel, R., Neri, R., et al. 2010, *Natur*, 463, 781
 Tran, K.-V. H., Moustakas, J., Gonzalez, A. H., et al. 2008, *ApJL*, 683, L17
 van den Bosch, F. C., Abel, T., Croft, R. A. C., Hernquist, L., & White, S. D. M. 2002, *ApJ*, 576, 21
 Vikram, V., Wadadekar, Y., Kembhavi, A. K., & Vijayagovindan, G. V. 2010, *MNRAS*, 409, 1379
 Vitvitska, M., Klypin, A. A., Kravtsov, A. V., et al. 2002, *ApJ*, 581, 799
 von der Linden, A., Best, P. N., Kauffmann, G., & White, S. D. M. 2007, *MNRAS*, 379, 867
 White, S. D. M. 1984, *ApJ*, 286, 38
 York, D. G., Adelman, J., Anderson, J. E., Jr., et al. 2000, *AJ*, 120, 1579