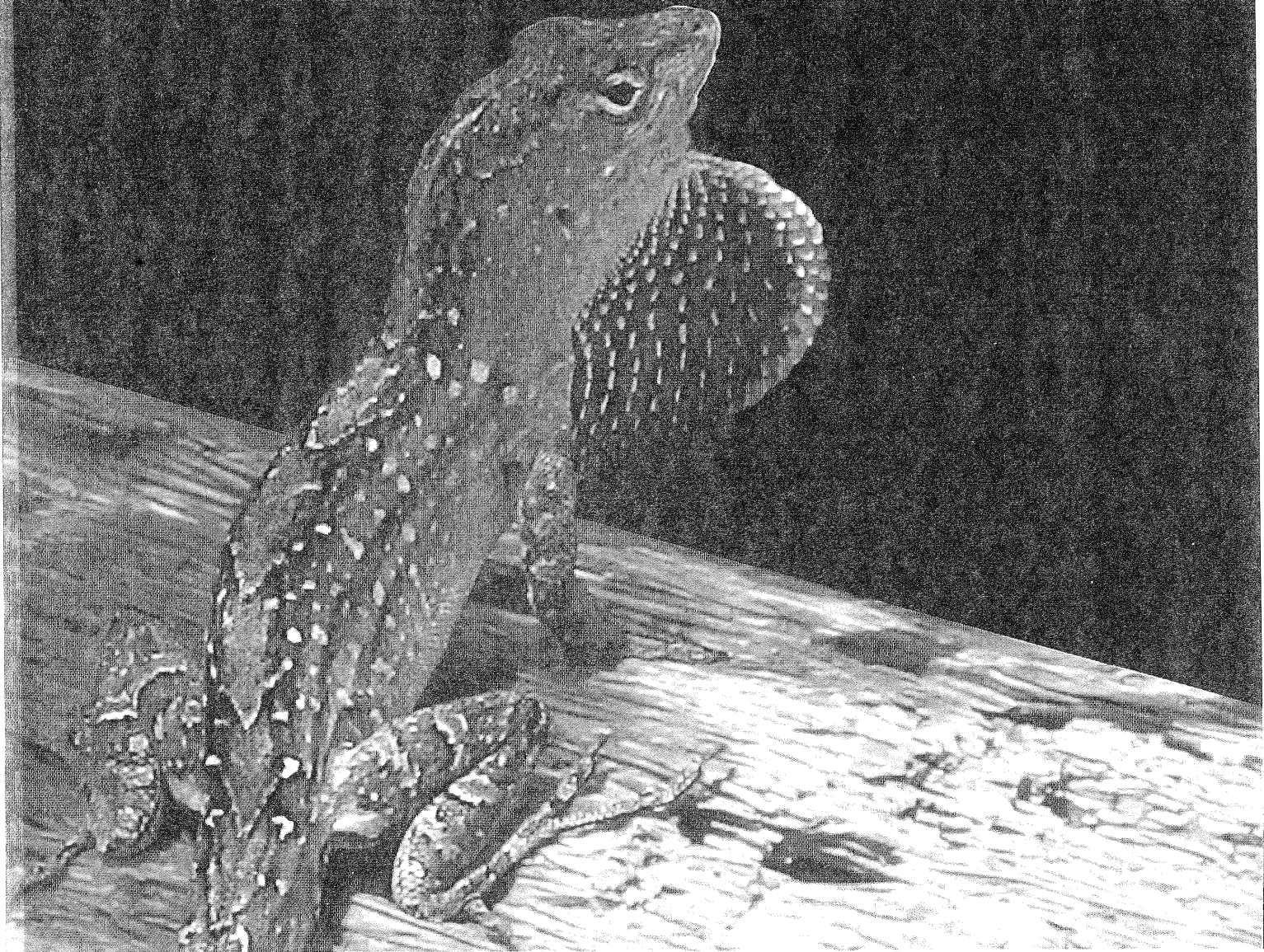


# EVOLUTIONARY BEHAVIORAL ECOLOGY

EDITED BY

David F. Westneat

Charles W. Fox



# EVOLUTIONARY BEHAVIORAL ECOLOGY

---

*Edited by*

David F. Westneat

Charles W. Fox

**OXFORD**  
UNIVERSITY PRESS

2010

**OXFORD**  
UNIVERSITY PRESS

Oxford University Press, Inc., publishes works that further  
Oxford University's objective of excellence  
in research, scholarship, and education.

Oxford New York  
Auckland Cape Town Dar es Salaam Hong Kong Karachi  
Kuala Lumpur Madrid Melbourne Mexico City Nairobi  
New Delhi Shanghai Taipei Toronto

With offices in  
Argentina Austria Brazil Chile Czech Republic France Greece  
Guatemala Hungary Italy Japan Poland Portugal Singapore  
South Korea Switzerland Thailand Turkey Ukraine Vietnam

Copyright © 2010 by Oxford University Press, Inc.

Published by Oxford University Press, Inc.  
198 Madison Avenue, New York, New York 10016

www.oup.com

Oxford is a registered trademark of Oxford University Press.

All rights reserved. No part of this publication may be reproduced,  
stored in a retrieval system, or transmitted, in any form or by any means,  
electronic, mechanical, photocopying, recording, or otherwise,  
without the prior permission of Oxford University Press.

Library of Congress Cataloging-in-Publication Data  
Evolutionary behavioral ecology / edited by David F. Westneat, Charles W. Fox.

p. cm.

Includes bibliographical references and index.

ISBN 978-0-19-533193-6; 978-0-19-533192-9 (pbk)

1. Animal behavior—Evolution. 2. Animal ecology.

I. Westneat, David F. II. Fox, Charles W.

QL751.E87 2010

591.5—dc22 2009031325

9 8 7 6 5 4 3 2 1

Printed in the United States of America  
on acid-free paper

WITH CONTRIBUTIONS FROM THE WORLD'S LEADING EXPERTS, *Evolutionary Behavioral Ecology* provides a core foundation of the field, a history of conceptual developments, and fresh insight into the controversies and themes shaping the continuing development of this multidisciplinary area of study. The book not only offers a comprehensive treatment of the evolutionary and ecological processes that mold behavior, it also examines foundational concepts such as adaptation, selection, fitness, and phenotypic plasticity and their application to the study of behavior. This evolutionary framework, combined with modern approaches to the genetic basis of behavior, highlight the increasingly interdisciplinary nature of the field and the insights that arise from this broader perspective. The text provides sophisticated perspectives on the diverse ideas that constitute modern behavioral ecology, and simultaneously serves as a gateway for future learning.

Hierarchically structured, the book is sequenced to offer a broad, overarching introduction that builds from foundational to more complex concepts, producing a comprehensive picture of modern behavior ecology. The text is intended as an introduction for graduate students pursuing careers in this discipline, but professional scientists in behavioral ecology and related fields, such as psychology, will find it to be a comprehensive sourcebook.

#### ABOUT THE EDITORS

**David F. Westneat** is Professor of Biology at the University of Kentucky.

**Charles W. Fox** is Professor of Entomology at the University of Kentucky.

#### COVER PHOTO

A male brown anole (*Anolis sagrei*) flaring his dewlap, a behavior used primarily during territorial and courtship displays. *Anolis* lizards have been used in the development and testing of fundamental theories in ecology and evolution, and they have served as important models in behavioral ecology.

Cover Credit: Daniel A. Warner  
Cover design: Geronna Lewis-Lyte

**OXFORD**  
UNIVERSITY PRESS

[www.oup.com](http://www.oup.com)

ISBN 978-0-19-533192-9



9 780195 331929

- 108
16. Signaling 266  
*Magnus Enquist, Peter L. Hurd, and Stefano Ghirlanda*  
Box 16.1. Game Trees 269
17. Behavior in Groups 285  
*Ryan L. Earley and Lee Alan Dugatkin*  
Box 17.1. Mechanisms of Dominance Hierarchy Formation 295  
Box 17.2. Reproductive Skew 300  
*Peter Nonacs*
18. Altruism and Cooperation 308  
*Andy Gardner, Ashleigh S. Griffin, and Stuart A. West*  
Box 18.1. Use and Abuse of Altruism 310  
Box 18.2. Hamilton's Rule 312  
Box 18.3. How to Analyze a Kin Selection Model 314
- 162
19. Evolution of Complex Societies 327  
*David C. Queller and Joan E. Strassmann*  
Box 19.1. Haplodiploid Pedigree and Relatedness 330

#### Section V. Reproductive Behavior

20. Sexual Selection 343  
*Michael D. Jennions and Hanna Kokko*  
Box 20.1. Anisogamy and the Parasitic Nature of the Origins of Sperm 346  
Box 20.2. Sex Allocation Theory and the Fisher Condition 351
21. Sexual Selection in External Fertilizers 365  
*Don R. Levitan*
22. Postcopulatory Sexual Selection 379  
*Scott Pitnick and David J. Hosken*  
Box 22.1. Multiple Mating by Females 380  
Box 22.2. Ejaculate Expenditure and Allocation Models 383
23. Sexual Conflict 400  
*Claudia Fricke, Amanda Bretman, and Tracey Chapman*  
Box 23.1. Key Lessons from Sexual Conflict Theory 401  
Box 23.2. Sexual Conflict as Social Selection: Insights from Selection Theory 403  
Box 23.3. Sexual Conflict Can Fuel Evolutionary Change Leading to Reproductive Isolation 405
24. Mate Choice 416  
*Robert C. Brooks and Simon C. Griffith*  
Box 24.1. Sensory Bias 424  
*Rebecca C. Fuller*
25. Alternative Mating Strategies 434  
*Stephen M. Shuster*

- Enquist, Magnus.** Department of Zoology and the Centre for the Study of Cultural Evolution, Stockholm University, Stockholm, Sweden
- Fox, Charles W.** Department of Entomology, University of Kentucky, Lexington, Kentucky, USA
- Fricke, Claudia.** School of Biological Sciences, University of East Anglia, Norwich, UK
- Fuller, Becky.** Department of Animal Biology, University of Illinois, Champaign-Urbana, Illinois, USA
- Gangestad, Steven.** Department of Psychology, University of New Mexico, Albuquerque, New Mexico, USA
- Gardner, Andy.** Department of Zoology, University of Oxford, Oxford, UK
- Ghalambor, Cameron.** Department of Biology, Colorado State University, Fort Collins, Colorado, USA
- Ghirlanda, Stefano.** Department of Psychology, University of Bologna, Bologna, Italy and the Centre for the Study of Cultural Evolution, Stockholm, Sweden
- Griffin, Ashleigh.** Department of Zoology, University of Oxford, Oxford, UK
- Griffith, Simon.** Department of Brain, Behaviour and Evolution, Macquarie University, Sydney, Australia
- Grozinger, Christina.** Department of Entomology, Pennsylvania State University, University Park, Pennsylvania, USA
- Hamilton, Ian.** Department of Evolution, Ecology, and Organismal Biology, and Department of Mathematics, Ohio State University, Columbus, Ohio, USA
- Healy, Susan.** Schools of Biology and Psychology, University of St. Andrews, St. Andrews, UK
- Hodgson, David.** Centre for Ecology and Conservation, School of Biosciences, University of Exeter, Cornwall Campus, Penryn, Cornwall, UK
- Hosken, David.** Centre for Ecology and Conservation, School of Biosciences, University of Exeter, Cornwall Campus, Penryn, Cornwall, UK
- Hunt, John.** Centre for Ecology and Conservation, School of Biosciences, University of Exeter, Cornwall Campus, Penryn, Cornwall, UK
- Hurd, Peter.** Department of Psychology, University of Alberta, Edmonton, Alberta, Canada
- Janzen, Fred.** Department of Ecology, Evolution, and Organismal Biology, Iowa State University, Ames, Iowa, USA
- Jennions, Michael.** Evolution, Ecology, and Genetics, Research School of Biology, The Australian National University, Canberra, Australia
- Johnson, J. Chadwick.** Integrated Natural Science, Arizona State University West, Phoenix, Arizona, USA
- Kokko, Hanna.** Department of Biological and Environmental Science, University of Helsinki, Helsinki, Finland
- Kvarnemo, Charlotta.** Department of Zoology, University of Gothenburg, Göteborg, Sweden
- Levitan, Don.** Department of Biological Science, Florida State University, Tallahassee, Florida, USA
- Lieberman, Debra.** Department of Psychology, University of Miami, Coral Gables, Florida, USA
- Mappes, Johanna.** Centre of Excellence in Evolutionary Biology, and Department of Biological and Environmental Science, University of Jyväskylä, Finland