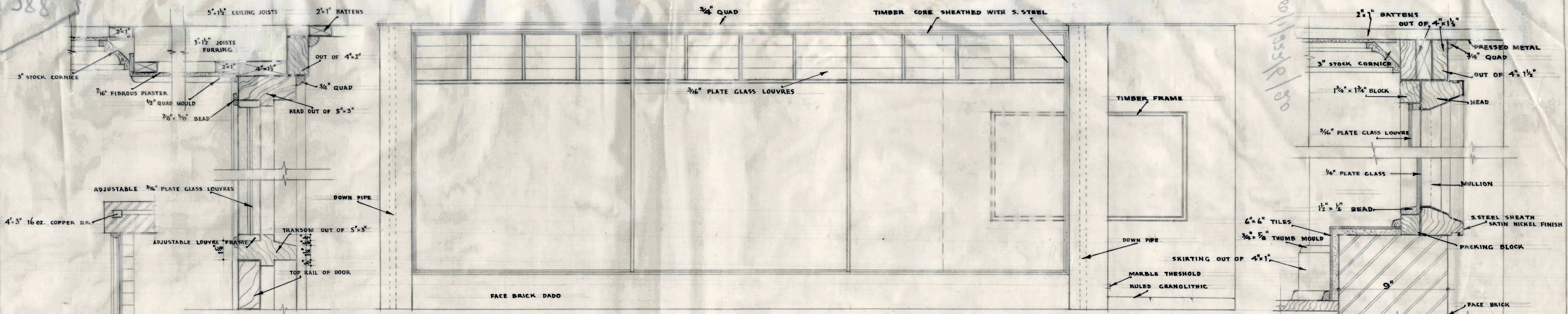
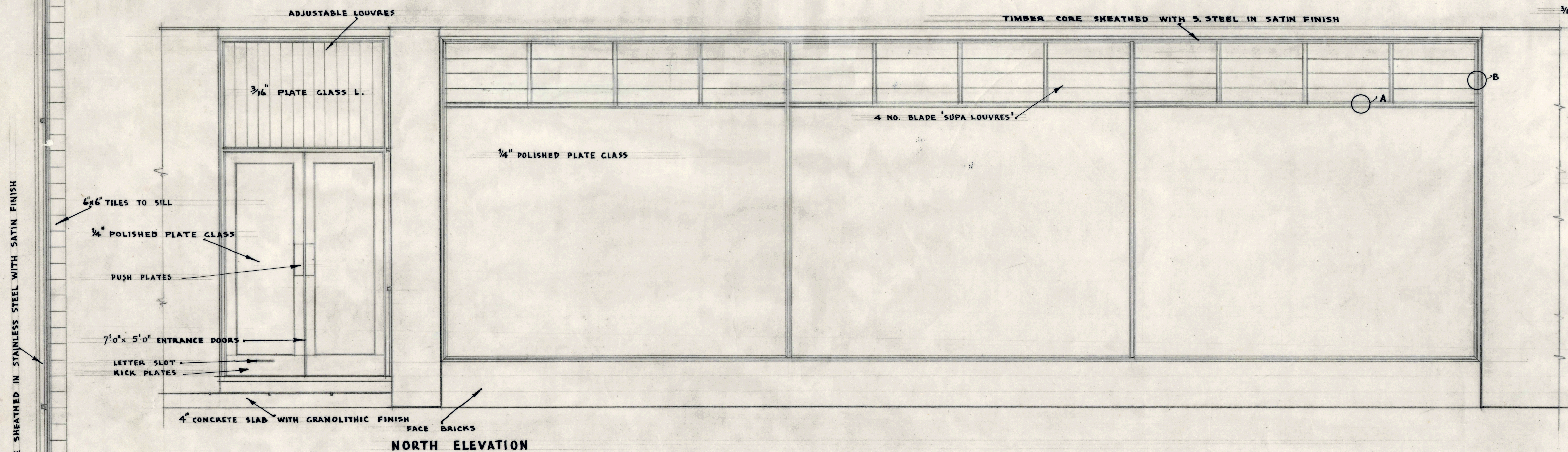


588

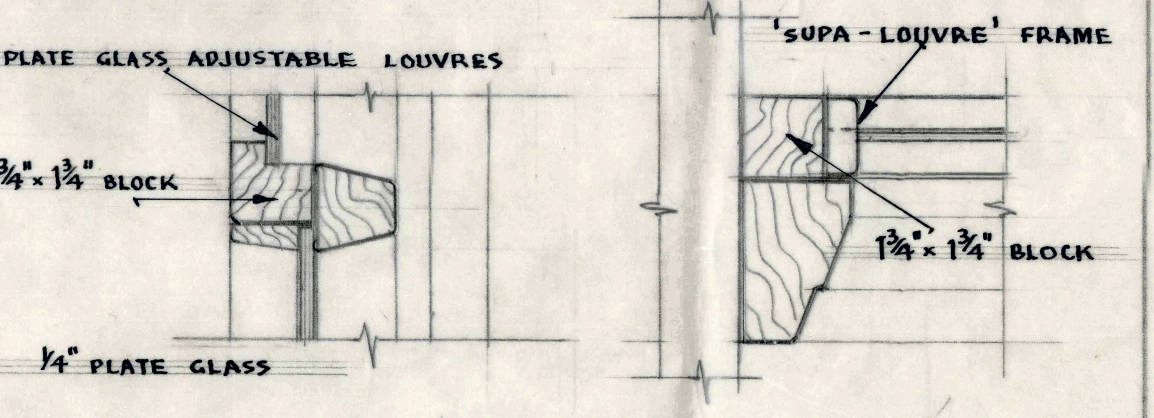


SECTION THRU' TRANSON & LOUVRE EAST ELEVATION

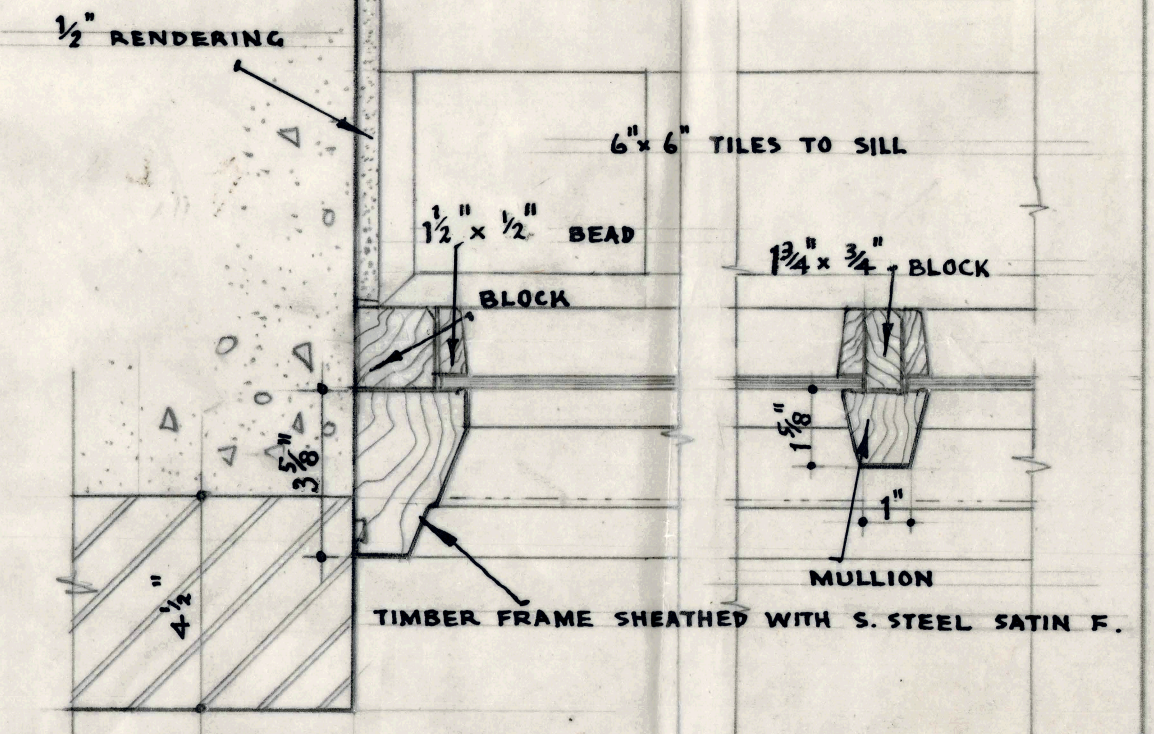
SECTION THRU' HEAD & SILL



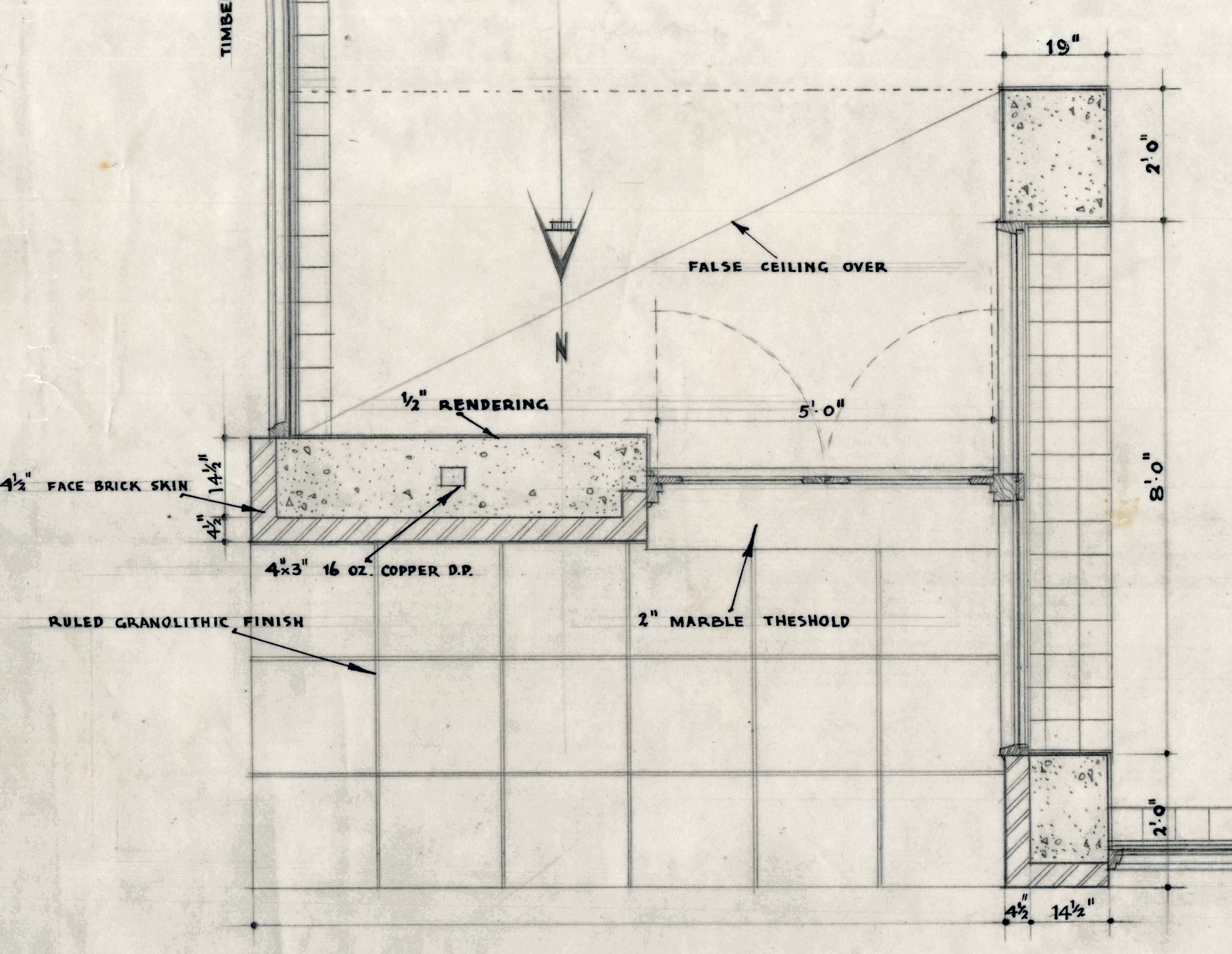
NORTH ELEVATION



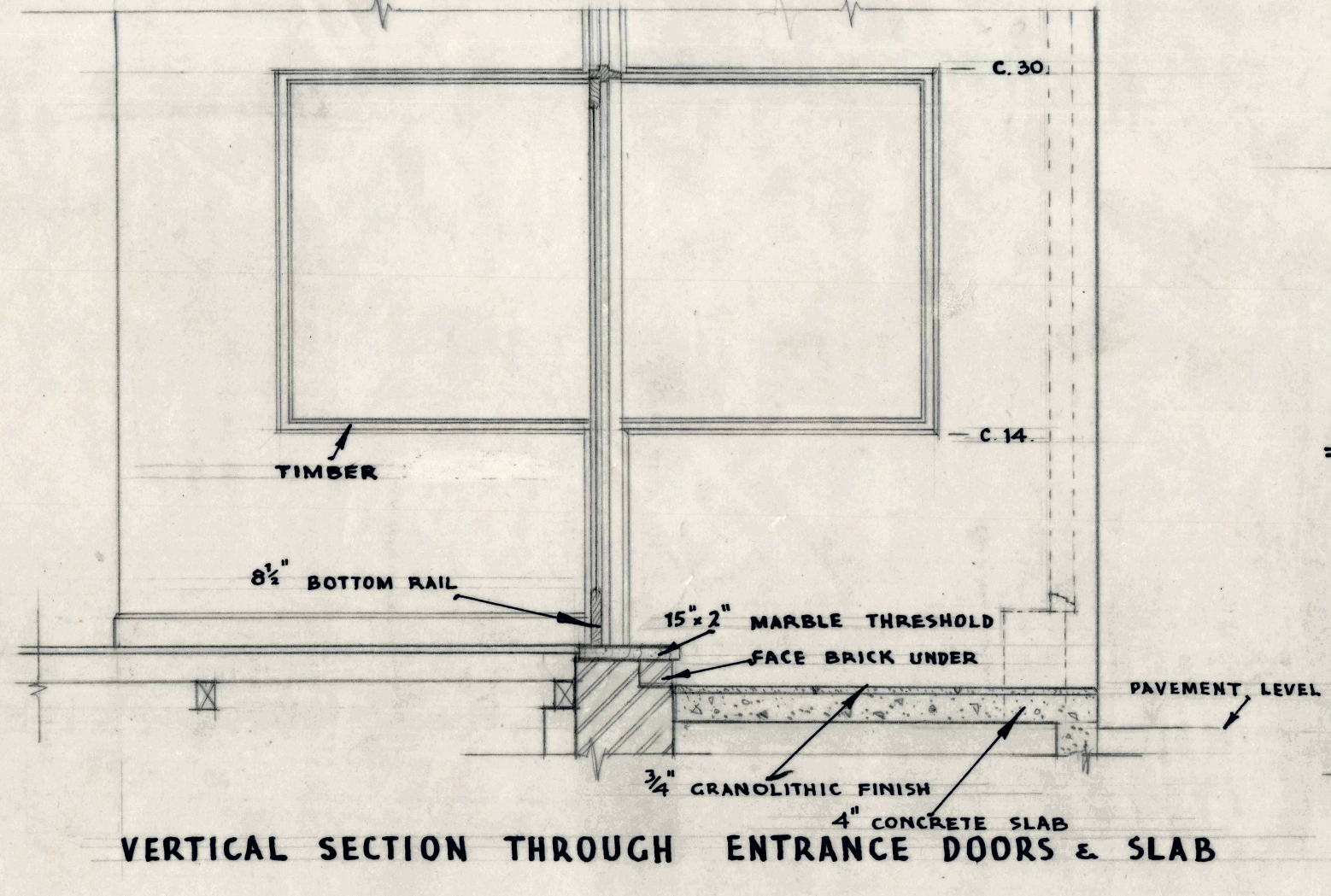
SECTIONS THRU' TRANSON & JAMB of A & B



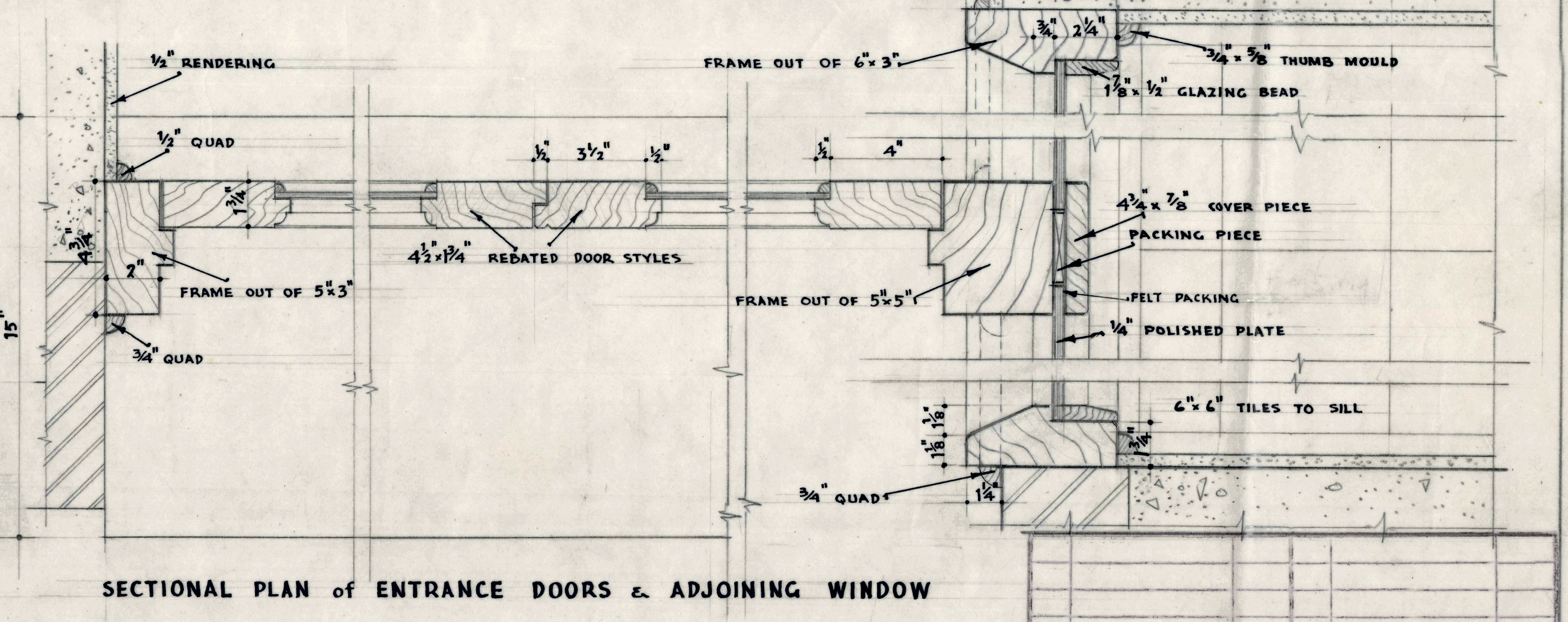
SECTIONAL PLAN of WINDOW JAMB & MULLION



PLAN of SHOP FRONT



VERTICAL SECTION THROUGH ENTRANCE DOORS & SLAB



SECTIONAL PLAN of ENTRANCE DOORS & ADJOINING WINDOW

ALLOW P.C. SUM OF £20.0.0 (TWENTY POUNDS) FOR 2 NO. DOOR CLOSERS, LOCKSET & FURNITURE

All exposed Timbers to be polished Queensland Maple.

NOTE - Builder is to set out and take all dimensions from the actual work.

No.	DESCRIPTION	DATE	No.	PRINTS OFF	DATE
	AMENDMENT				
NEW PREMISES at RAYMOND STREET SALE VICTORIA, for DALGETY & CO. LTD					
DRAWN BY	7/15	DRAWING No.		5465/9	
CHECKED BY	26/4	SCALE		1/2" = 1'-0"	4 FS.
DATE	26-4-55	HOWDEN AND MCLEAN ARCHITECTS		411 COLLEGE ST. MELBOURNE, C.I.	