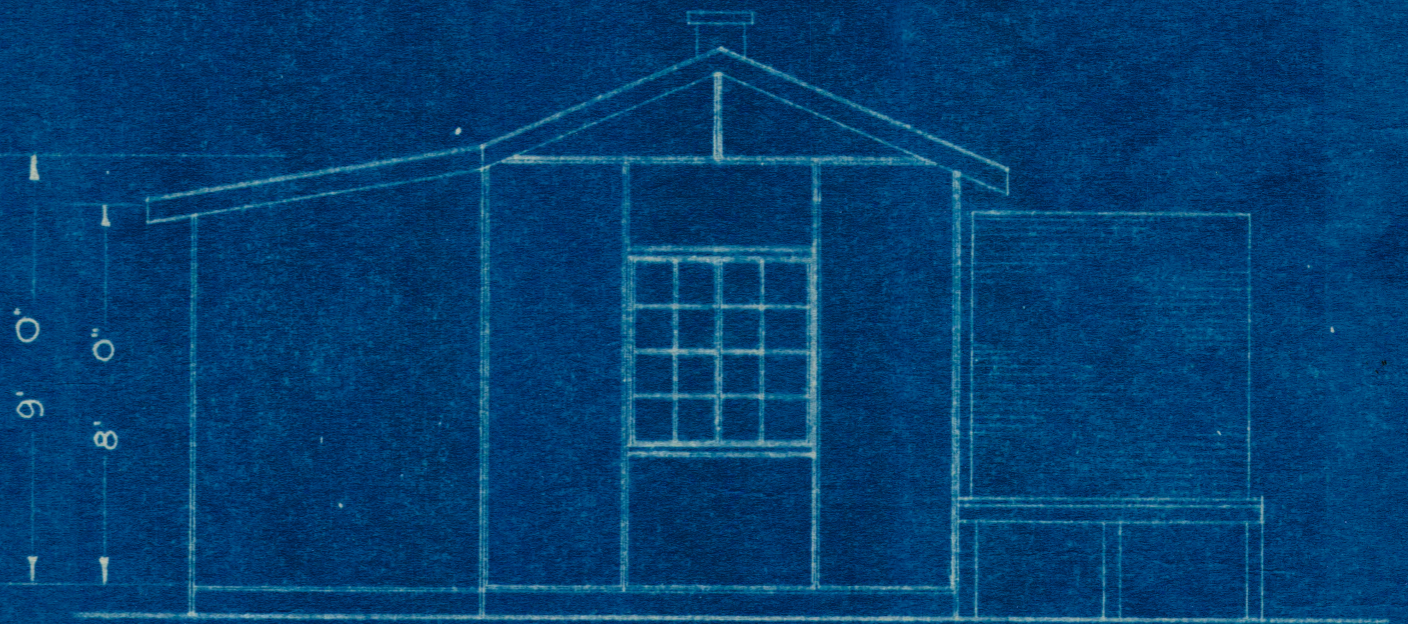
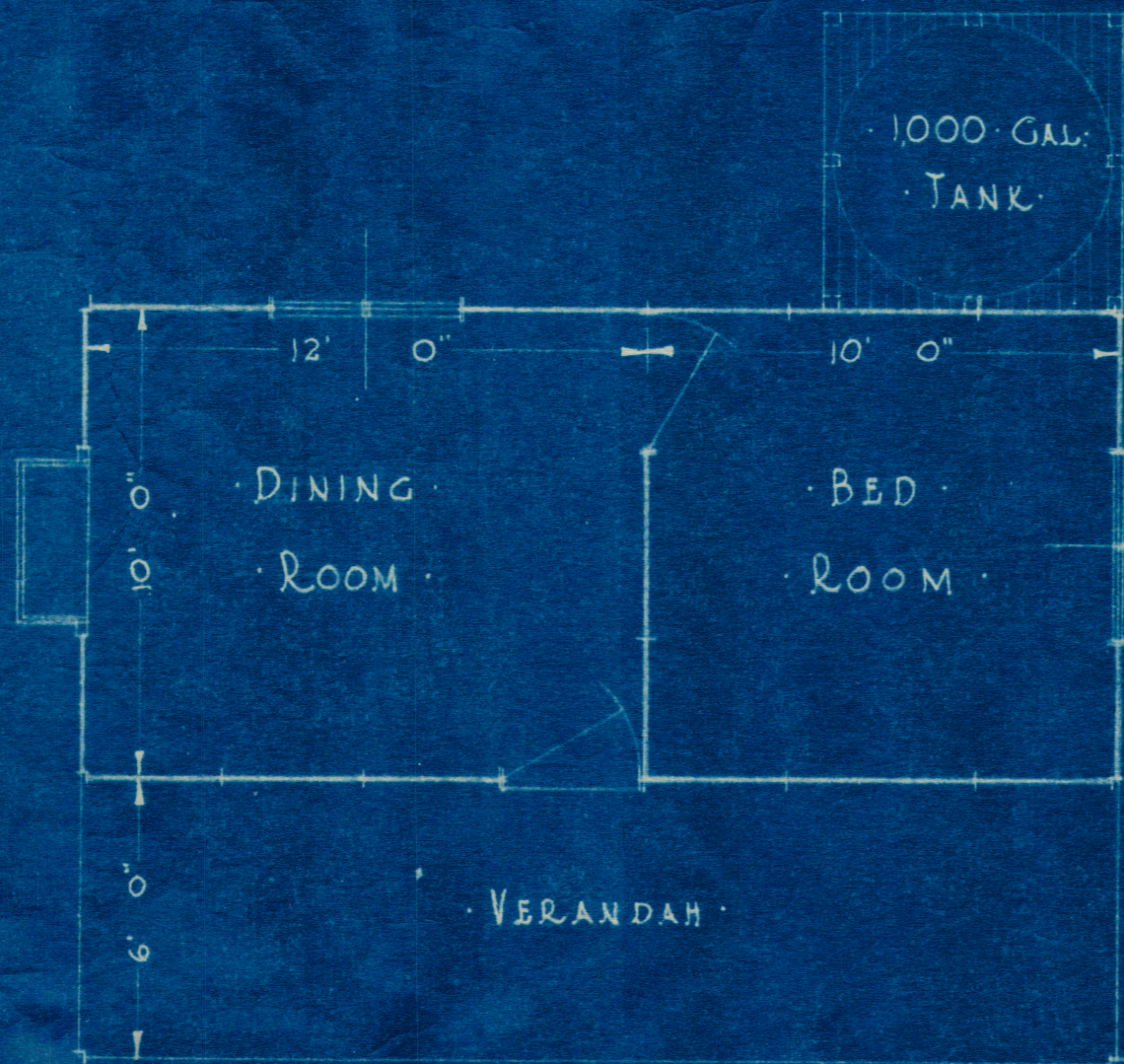


FRONT



SIDE



PLAN

PROPOSED OVERSEERS COTTAGE

AT

BULLAWAH STATION N.S.W.

FOR

GOLDSBROUGH MORT & CO LTD

SCALE $\frac{1}{4}'' = 1'0''$

GARDNER CONSTRUCTIONS PTY LTD
 WILLIAMSTOWN RD PORT MELB
 DRAWING NO 164 E 19.3.37 WM