

B. H. McDONALD
LICENSED SURVEYOR
SHEPPARTON

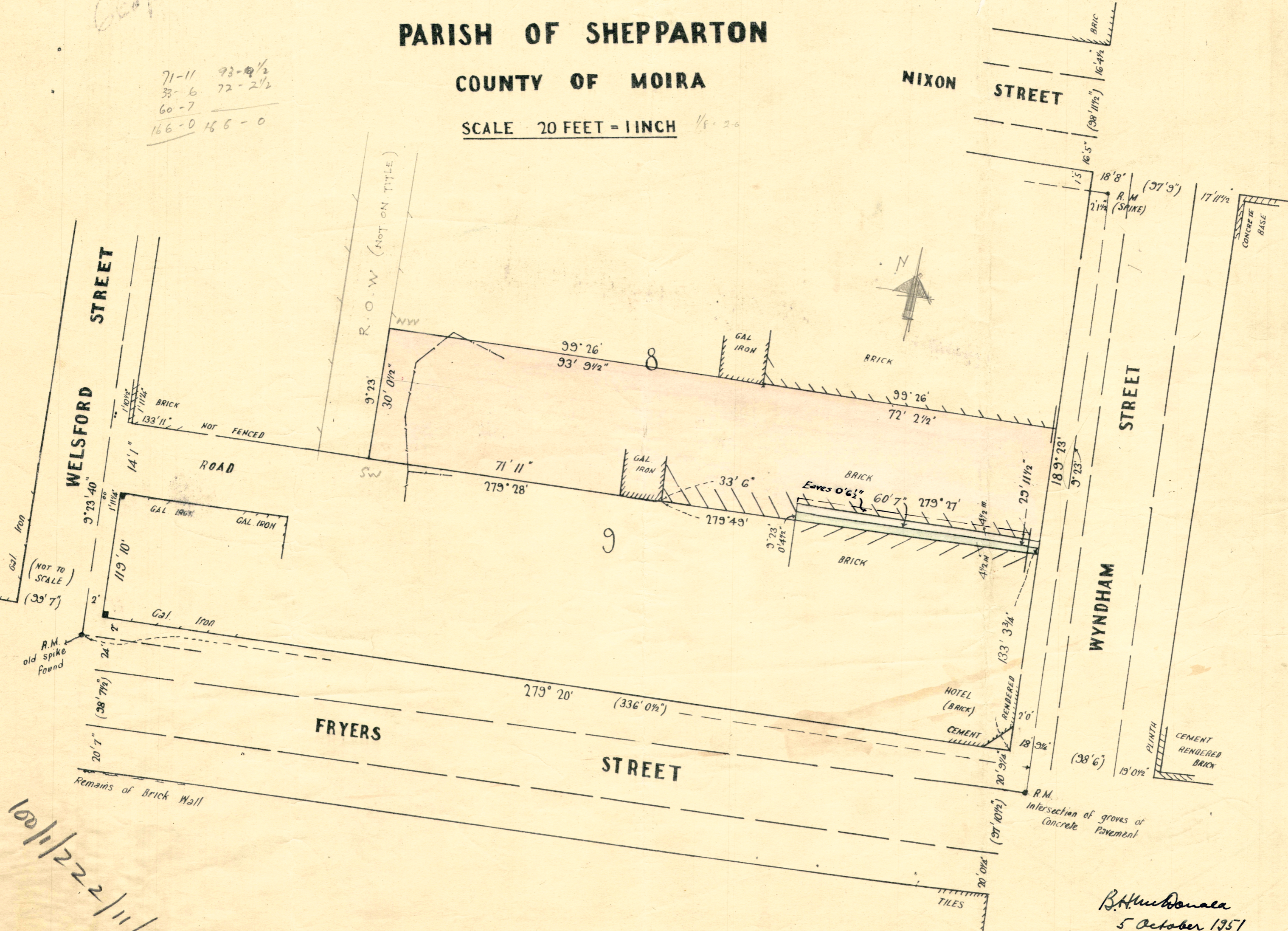
PLAN OF SUBDIVISION
PART OF CROWN ALLOTMENT 8 SEC M

PARISH OF SHEPPARTON

COUNTY OF MOIRA

SCALE 20 FEET = 1 INCH 1/8" = 20'

71-11 93-0 1/2
33-6 72-2 1/2
60-7
166-0 166-0



100/1/222/11/6

B.H. McDonald
5 October 1951