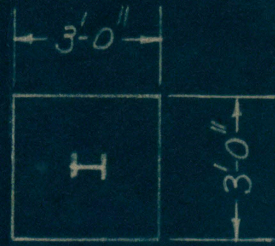


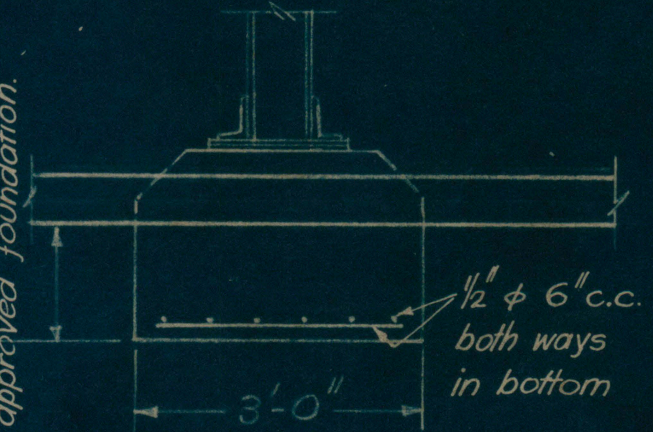
3'-0" x 3'-0" Base A

$\frac{1}{2}$ "  $\phi$  6" c.c. both ways.



3'-0" x 3'-0" Base A

Bottom of base taken down to approved foundation.

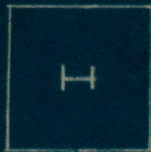


ELEVATION BASE A

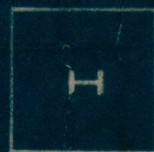
Rods to have 2" clear cover.

Unless shown otherwise, concrete to be composed of:

- 4 cubic ft.  $\frac{3}{4}$ " plus metal
- 2 cubic ft. clean sharp sand
- 1 cubic ft. Portland Cement (94 lbs)



3'-0" x 3'-0" Base A



3'-0" x 3'-0" Base A.

PLAN OF BASES TO CONDENSER TOWER.

This Drawing remains the property of and must not be copied or used without the permission of The Trussed Concrete Steel Coy. (Aust.) Pty. Ltd.

SYDNEY MEAT PRESERVING CO. LTD.  
AUBURN - N. S. W.  
REINFORCED CONCRETE CONSTRUCTION

Scale :-

$\frac{1}{4}$ " &  $\frac{1}{2}$ " = 1'-0"

William Mc. Donald

Consulting Engineer.

E.C. Everingham,

Structural Engineer.

Drwg No W. 16559

Date: - 20-12-43.

The Trussed Concrete Steel Co. (Aust.) Pty. Ltd.  
18-19 O'Connell St., Sydney.  
Tel. SW. 4100.