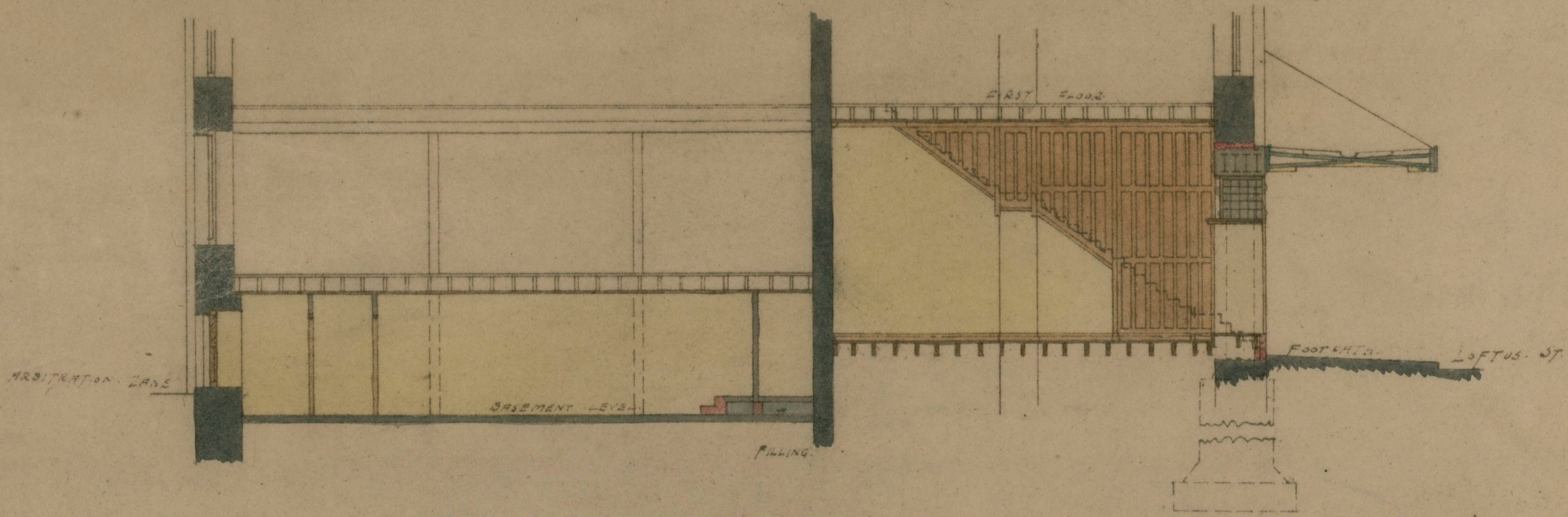
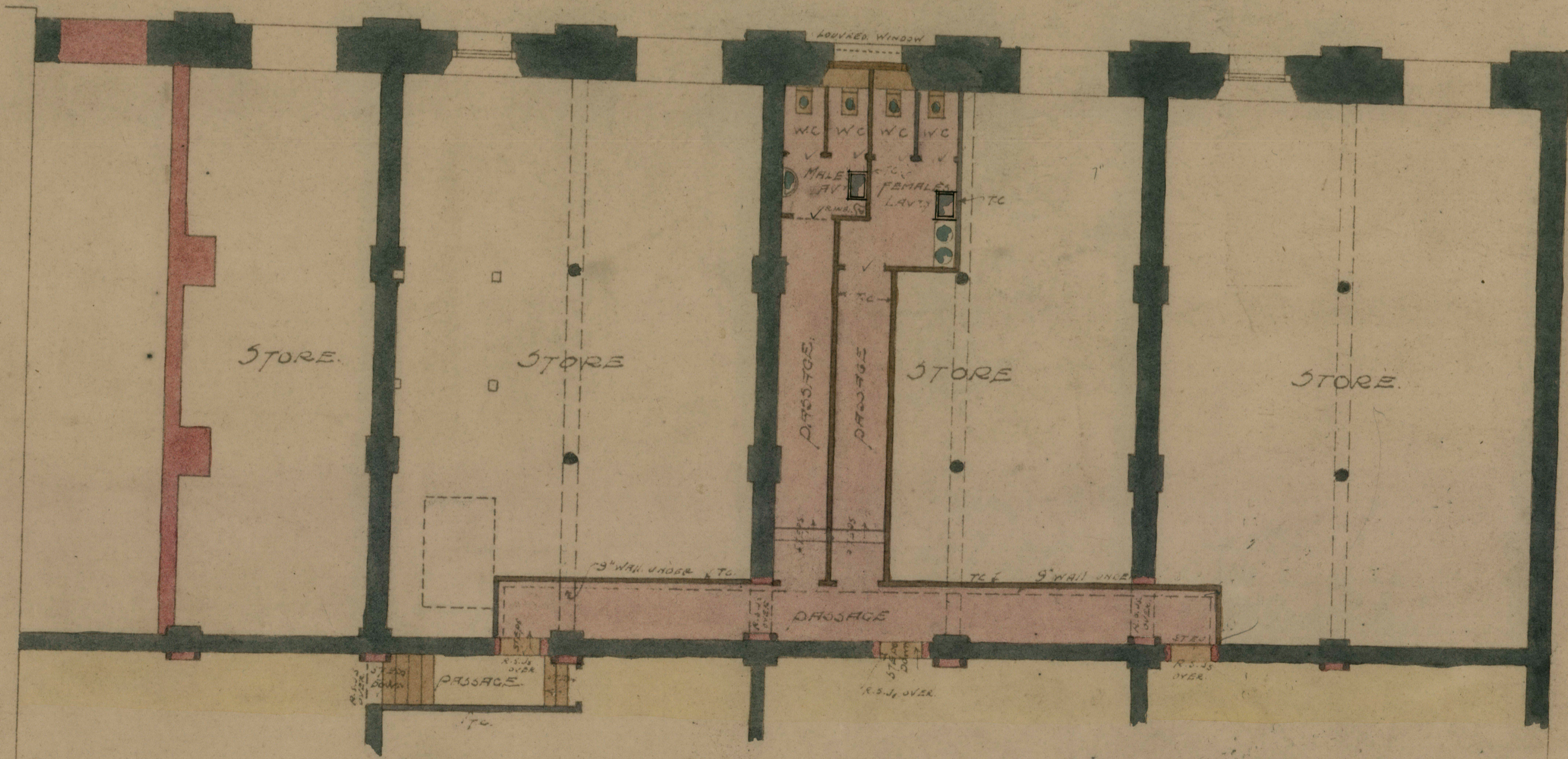


PLAN OF ALTERATIONS & ADDITIONS TO PREMISES
 MACQUARIE PLACE & LOFTUS STREET SYDNEY
 FOR MESSRS GOLDBROUGH MORT & CO L^{TD}



SECTION "CC"

ARBITRATION STREET



CHOPS AS SHOWN ON GROUND PLAN



MORROW & DEPOTRON
 ARCHITECTS
 GIBBS CHAMBERS
 17 MARTIN PLACE SYDNEY

SCALE 1/8" INCH = 1 FOOT

BASEMENT PLAN

22-8-32