

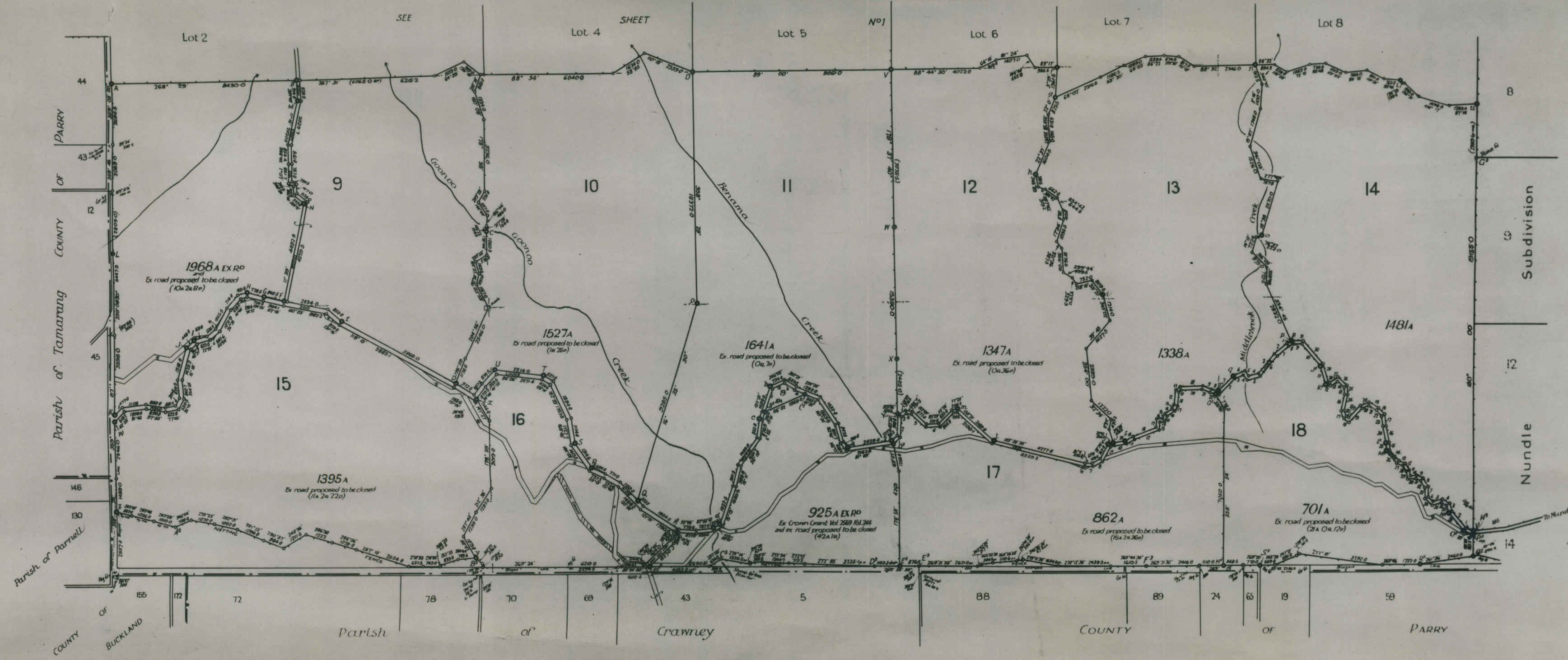
Shire of Nundle

REFERENCE TO BOUNDARY LINES OF PARTS OF LOTS 13 14 17 18 AND 19

Line	Reference	Line	Reference	Line	Reference	Line	Reference	Line	Reference	Line	Reference	Line	Reference	Line	Reference
1	Lot 13	2	Lot 13	3	Lot 13	4	Lot 13	5	Lot 13	6	Lot 13	7	Lot 13	8	Lot 13
9	Lot 13	10	Lot 13	11	Lot 13	12	Lot 13	13	Lot 13	14	Lot 13	15	Lot 13	16	Lot 13
17	Lot 13	18	Lot 13	19	Lot 13	20	Lot 13	21	Lot 13	22	Lot 13	23	Lot 13	24	Lot 13

Notes  
 Restrictions if any will be embodied in the conditions of each lot shown in this subdivision. It is intended that the roads shown hereon shall be dedicated for the Public use. \* indicates parts of roads proposed to be closed.

Sheet No 2  
 Scale 20 Chains to an Inch



SCHEDULE OF REFERENCE AND PERMANENT MARKS SHOWN ON SHEET No 2

Station	Reference	Station	Reference	Station	Reference	Station	Reference	Station	Reference
A	1395A	B	1395A	C	1395A	D	1395A	E	1395A
F	1395A	G	1395A	H	1395A	I	1395A	J	1395A
K	1395A	L	1395A	M	1395A	N	1395A	O	1395A

Plan approved by Council of the Shire of Nundle  
 Covered by Council Clerk's certificate No 1/35 of 11/2/35  
 Shire Clerk  
 President

The Seal of the Nundle Shire Council was hereto affixed this 11th day of February 1935 in pursuance of a resolution passed by the Council on 5th day of February 1935 M. 21.  
 Shire Clerk  
 President

It is proposed to dedicate to the Public all new roads shown on this plan  
 The Peel River Land and Mineral Company Limited

By its Attorney  
 [Signature]  
 Datum Line of Azimuth Z-Z' Sheet 1

Dimensions of boundary lines between points marked A-B-C-D-E-F-G-H on plan are taken from plans of surveys by M<sup>r</sup> Linton Palmer and are not embraced by this declaration. I, Marcus Michael Hyndes of Muswellbrook, a surveyor registered under the Surveyors Act, 1920, do hereby solemnly and sincerely declare (a) that all boundaries and measurements shown on this plan are correct (b) that all survey marks found and relevant physical objects on or adjacent to the boundaries are correctly represented (c) that all physical objects indicated actually exist in the positions shown (d) that the whole of the material facts in relation to the land are correctly represented (e) that the survey represented in this plan has been made in accordance with the Survey Practice Regulations, 1933, by me, was completed on 7th December 1934, and reference and permanent marks as shown hereon are of the required kind and number and have been placed as prescribed. And I make this solemn declaration conscientiously believing the same to be true and by virtue of the provisions of the Oaths Act 1900.

Subscribed and declared before me at Tamworth this first day of February AD 1935  
 [Signature]