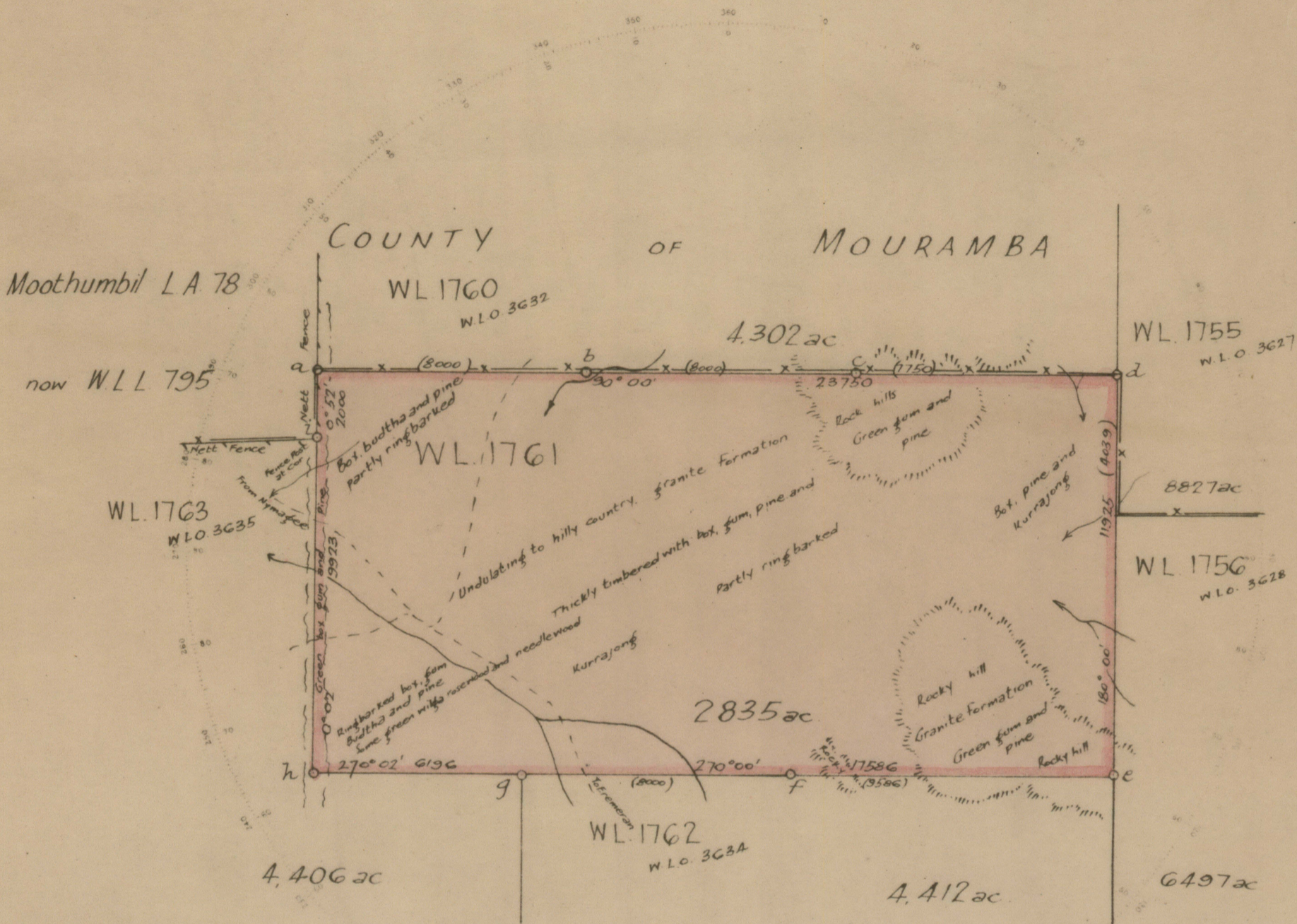


PLAN OF PORTION WL 1761 County of Blaxland Western Division

Applied for under Section 25 of the Western Lands Act of 1901 by Maurice Ford

Western Lands Lease No 3886 vide Gazette



Azimuth taken from Por. W.L. 1756
Field Book Vol. 242 Folio 11 to 54

Reference to Corners

Corner	Bearing	From	Links	Tree
a	314° 21'	Gum	105.5	WL 1760, 1761
b	304° 06'	Pine	39.1	A
c	153° 19'	do	47.2	B
d	18° 40'	do	88.9	WL 1760, 1761
e	281° 01'	do	217.5	WL 1761, 1762
f	3° 45'	do	76.8	A
g	95° 55'	do	136.4	WL 1762, 1763
h	301° 40'	do	15.5	WL 1761
z	262° 58'	Box	64.2	WL 1763

Nature and Value of Improvements

I Henry Scott-Kemmis
of Dubbo

a Surveyor registered under the Surveyors Act, 1929 do hereby solemnly and sincerely declare that the survey, ~~on the part thereof shown by lines~~ represented in this plan has been made by me in accordance with the Survey Practice Regulations 1933 and the special requirements of the Western Land Office and was completed on the 21st August 1935

And I make this solemn declaration conscientiously believing the same to be true and by virtue of the provisions of the Oaths Act, 1900

H. Scott-Kemmis

Surveyor registered under the Surveyors Act 1929

Subscribed and declared before me at Cobar
this 14th day of Sept 1935

D. H. Dunlop, J.P.

Justice of the Peace

I hereby certify that I in person made and completed the survey represented on this plan on which are written the bearings and lengths of the lines measured by me and I declare that the survey has been executed in accordance with the regulations of the Western Land Board

Transmitted to the Secretary Western Lands A with my letter of 14th Sept 1935

Voucher No. Passed
Calculation Book No. G11 Folio 56
Checked and Charted G. R. Woods 24.9.1935
Examined
Plan approved } S. H. Pasley 21.10.1935

Scale 40 Chains to an Inch

Lithographed and Printed at the Department of Lands, Sydney, N.S.W.

Cat. No. W.L.O. 3633

Draftsman

22d
Exp.
GAW