

# PLAN

of Areas offered for Lease under Part VII of the Western Lands Acts

## COUNTY OF MANARA

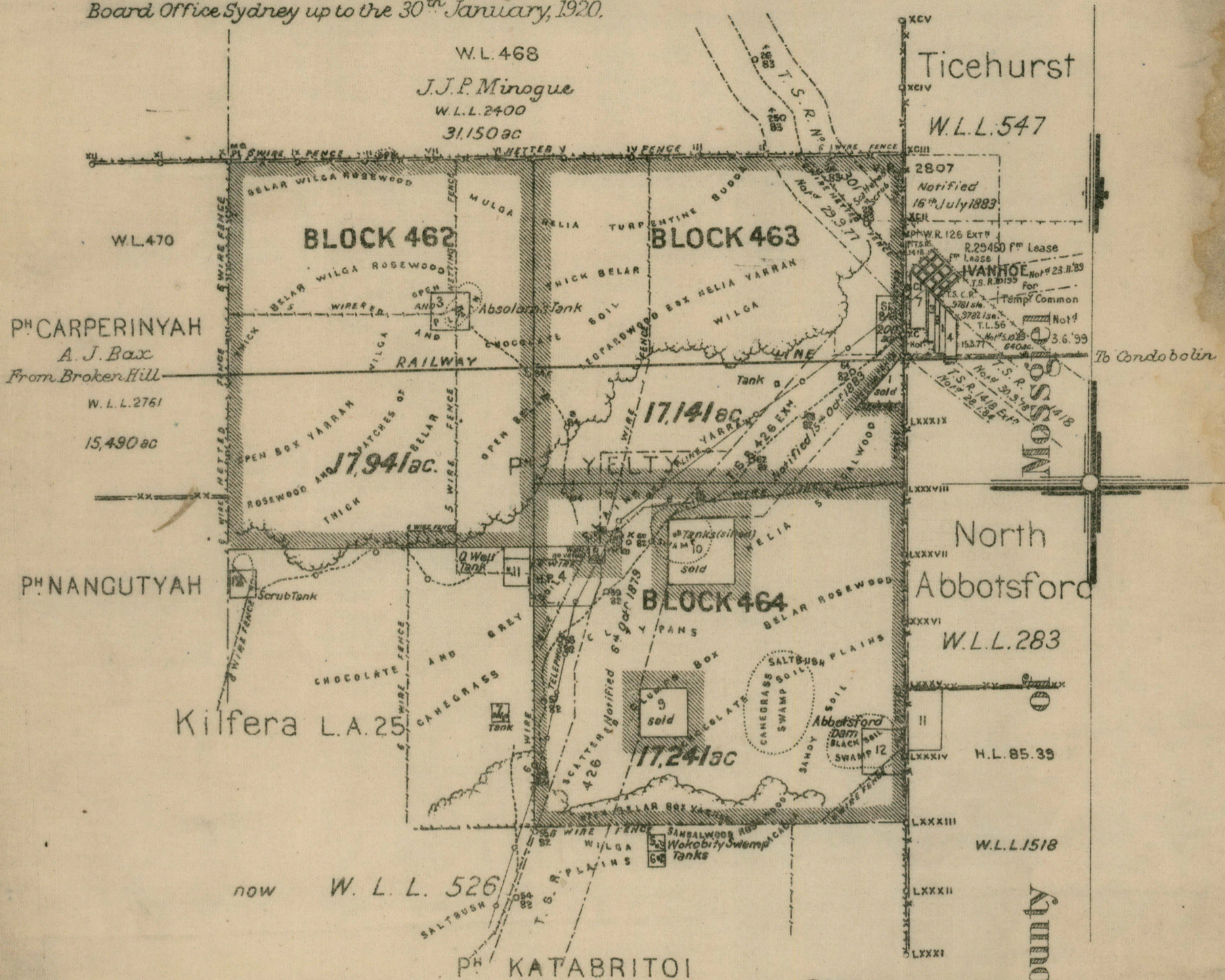
WESTERN DIVISION

being the Area withdrawn from Kilfera W.L.L.526 & Vacant Crown Land

SCALE - 2 MILES TO AN INCH

Compiled, Drawn and Printed at the Department of Lands, Sydney, N.S.W., Dec., 1919  
No. of Lith. 13, 1282, M.

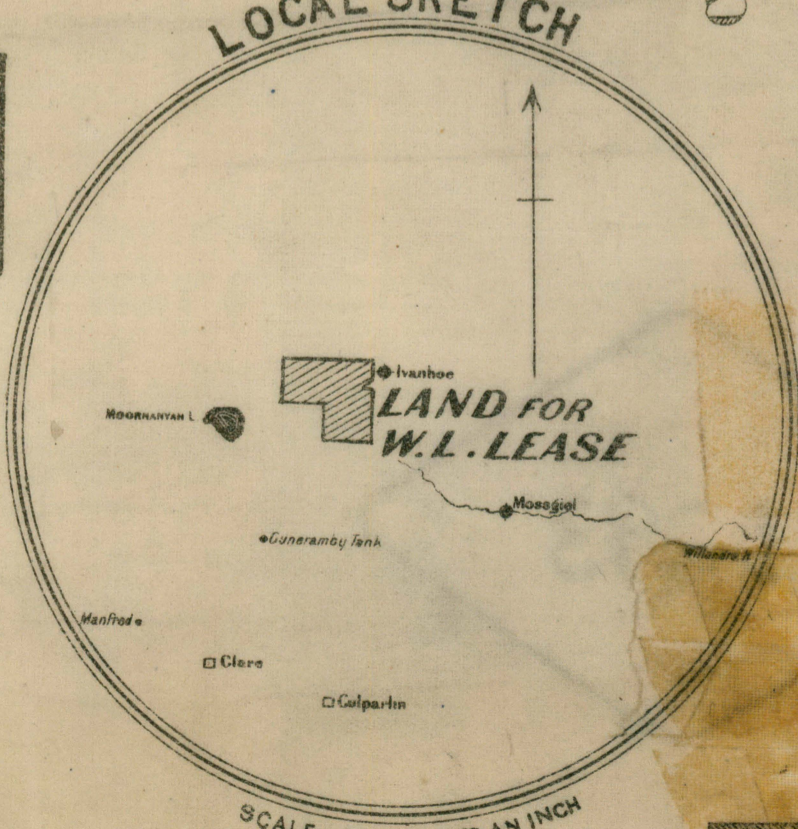
Applications will be received at the Western Land Board Office Sydney up to the 30<sup>th</sup> January, 1920.



### SCHEDULE

BLOCK NUMBER	AREA	ANNUAL RENTAL
BLOCK 462	17,941 ac	£13. 9. 1
BLOCK 463	17,141 ac	£15. 14. 3
BLOCK 464	17,241 ac	£15. 14. 3

### LOCAL SKETCH



NOTE:-Lands available for W. L. Lease, shewn thus

