

# RICH DAIRYING LAND.

NEAR THE RIVER MURRAY.

About 1,103 ACRES. Part of the famed

## MATHOURA Estate

Divided into 12 Blocks, containing from about 78 to 118 Acres each.

TO BE OFFERED FOR SALE BY AUCTION

BY

**GOLDSBROUGH, MORT & Co. Ltd. & McKENZIE & Co.**

(MELBOURNE & SYDNEY)

at

(in conjunction)

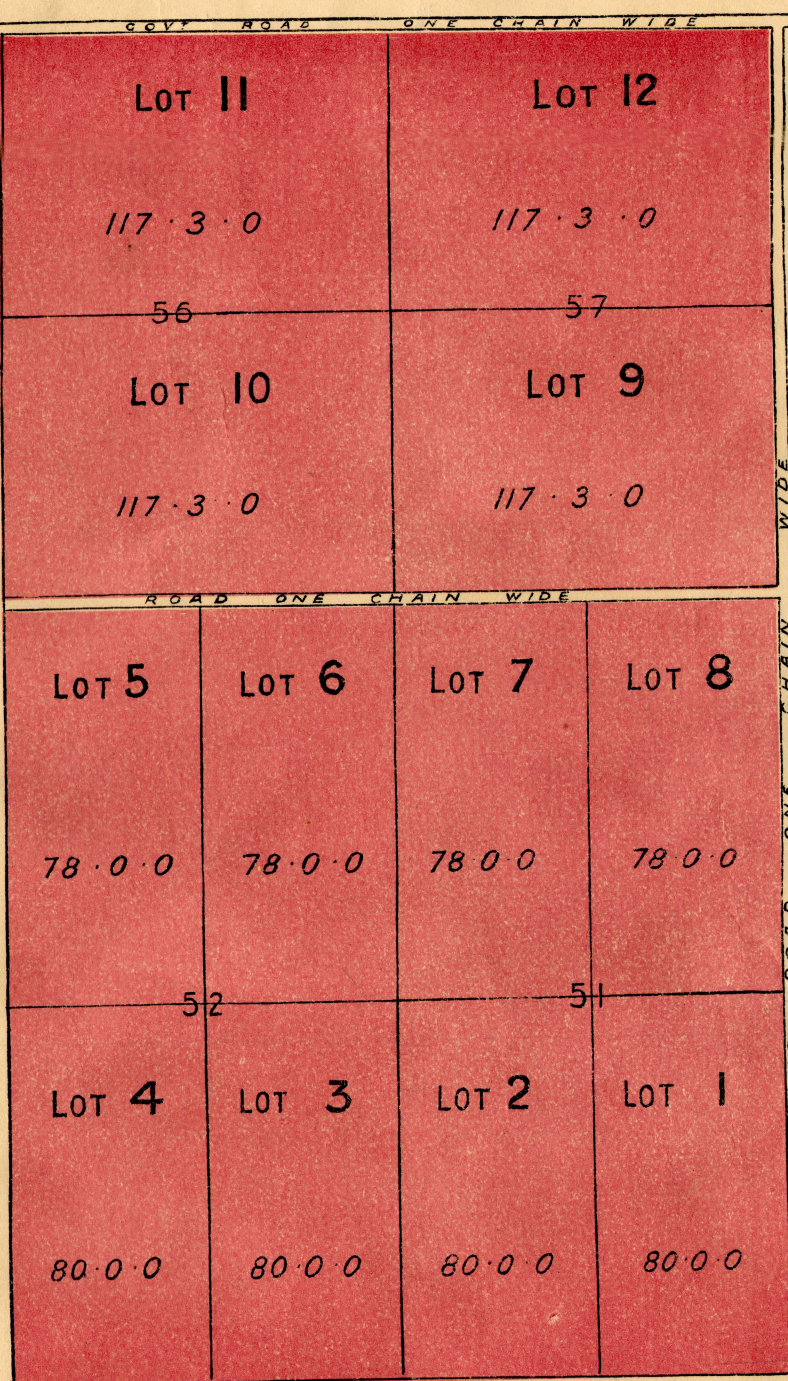
**ALFRED HALL,  
MATHOURA, N.S.W.,**

on

**WEDNESDAY, MARCH 10,**

1909,

**AT 10.30 A.M.**



SCALE: 20 CHAINS TO 1 INCH.

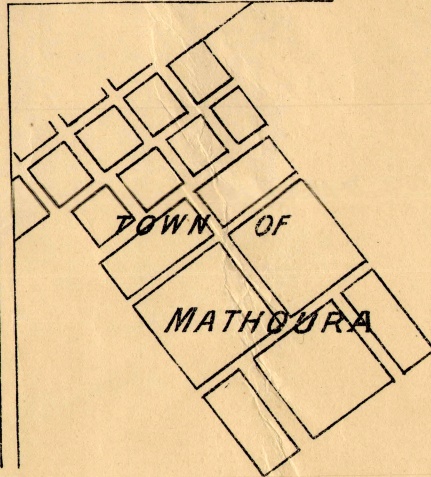
### RICH, HEAVY CARRYING ... SOIL ...

Eminently suitable for Cereal growing or Dairying purposes, and being situated within three miles of Mathoura Railway Station (23 miles from Echuca), is within quick and cheap access of Melbourne.

There is at Mathoura a Public School, and at Deniliquin (22 miles distant) and Echuca a Creamery.

### ..TERMS..

Liberal and exceptionally easy terms will be given.



TRAINS leave Melbourne	-	-	6.45 a.m.
" " Bendigo	-	-	12.2 p.m.
" " Mangalore	-	-	9.35 p.m.
" " Echuca	-	-	3.15 p.m.
Reaching Mathoura	-	-	4.35 p.m.

and the Sale has been fixed at 10.30 a.m. in order that Purchasers may, if desired, return south by the train leaving Mathoura at 1.25 p.m.

INSPECTION.—Arrangements have been made to drive intending Purchasers over the property, upon application to McKENZIE & Co., or the Manager of the Station.

*This Plan shall not be deemed a muniment of Title*  
FOR FURTHER PARTICULARS APPLY TO

**Goldsbrough, Mort & Co. Ltd.**  
Melbourne and Sydney,

**McKENZIE & Co., Echuca, or**

**The Manager, Mathoura Estate, Mathoura.**