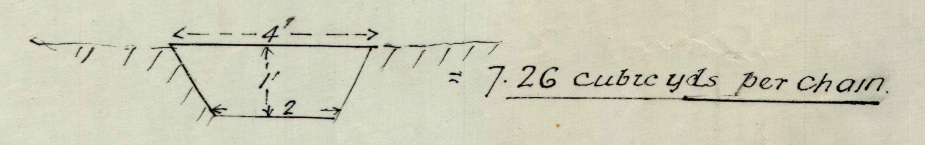


Sketch plan of proposed drain
From
Elsinora N^o 2 Bore to Thurloo Downs

Particulars of Drains

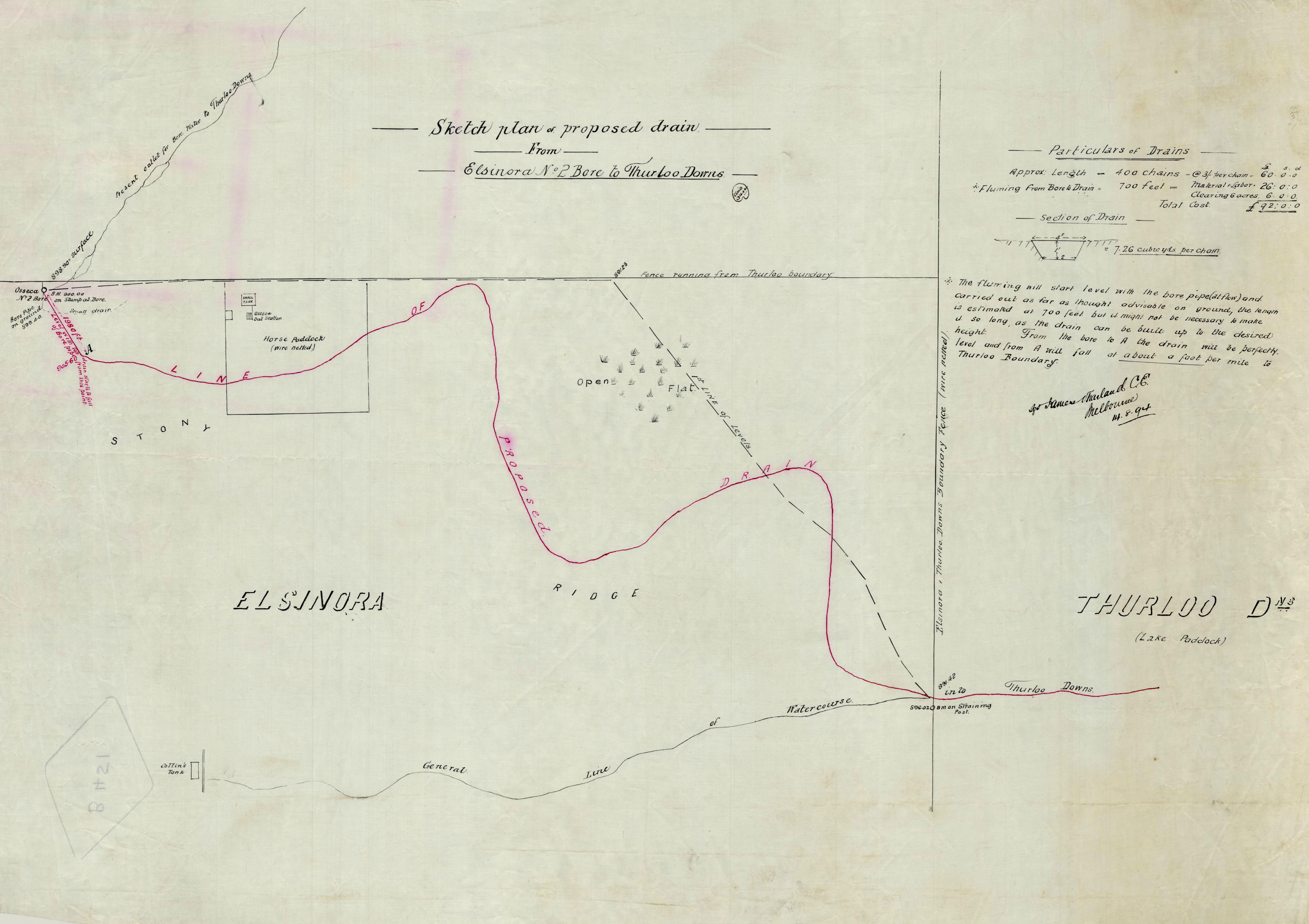
Approx. Length	= 400 chains	@ 3/- per chain	= 60.0.0
*Fluming from Bore to Drain	= 700 feet	= Material & Labor	26.0.0
		Clearing 6 acres	6.0.0
		Total Cost	£ 92.0.0

Section of Drain



* The fluming will start level with the bore pipe (at flow) and carried out as far as thought advisable on ground, the length is estimated at 700 feet but it might not be necessary to make it so long, as the drain can be built up to the desired height. From the bore to A the drain will be perfectly level and from A will fall at about a foot per mile to Thurloo Boundary.

*Geo James Shalland C.E.
Melbourne
11.8.94*



ELSINORA

THURLOO D^N₃
(Lake Paddock)

B#21