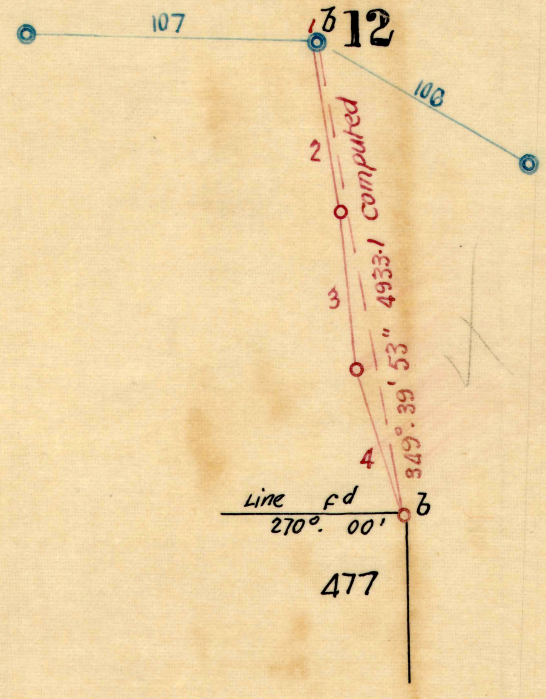


a to a

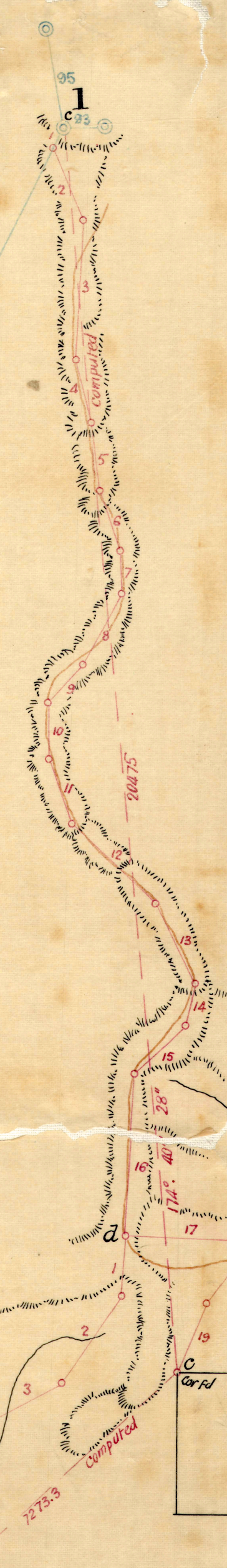
1	167° 25'	2864
2	172° 04'	1725
3	211° 55'	2290
4	230° 15'	2418
5	206° 46'	1988
6	270° 00'	112



b to b

1	272° 04'	53.2
2	170° 31'	1771.0
3	174° 26'	1633.0
4	161° 47'	1561.0

Gundaine



2	156° 53'	1220
3	183° 40'	2307
4	166° 49'	1058
5	172° 22'	1135
6	160° 51'	1045
7	171° 40'	701
8	208° 52'	1320
9	223° 07'	887
10	179° 06'	922
11	160° 02'	1134
12	133° 06'	1915
13	153° 07'	1490
14	193° 57'	709
15	227° 35'	1174
16	183° 22'	2573
17	92° 21'	2124
18	216° 53'	1285
19	203° 10'	1231

d to d

1	183° 50'	994
2	214° 50'	1731
3	242° 40'	1394
4	211° 27'	1395
5	151° 36'	757
6	215° 04'	840
7	218° 08'	1102
8	255° 58'	480.3
9	206° 43'	581.6

d to e

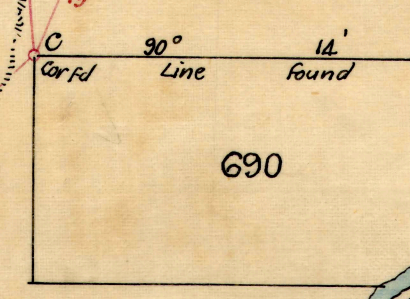
1	277° 37'	1842
2	263° 36'	1860
3	258° 37'	1224
4	257° 36'	1281
5	259° 01'	1546
6	255° 33'	552
7	258° 31'	818
8	246° 46'	1783
9	200° 05'	1001
10	235° 52'	2013



645

1	269° 17'	13200.3
2	253° 37'	12
3	12"	3'

Line	499
Line	498



690