

A Home Site
of
Surpassing Beauty

HARBOURSIDE ESTATE, PORTLAND

A
Rare Opportunity
for Investment.

This Fine Property, formerly known as Greenmount, is now subdivided and Available for Selection

HARBOURSIDE ESTATE

IS within 8 minutes comfortable walk of the Post Office, Railway Station, all Public Buildings including Reading Room and Public Hall (upon which £5,000 is being spent).

Convenient Situation

Golf Links, Beach and Bath Houses are in close proximity to the Estate, while Botanic Gardens and Show Grounds are only divided from HARBOURSIDE ESTATE by Salt Water Creek which it is proposed to span by a foot-bridge (See Plan).

At the recent sittings of the Outer Ports Commission at Portland it was evident from the Chairman's summing up that it has been decided that a Harbour be constructed at Portland without delay; also that rearrangement of Railway Charge and regrading of the Horsham-Portland Railway Line be made matters of immediate attention.

Population Increasing

Portland within a few years will have a large population when fine properties like HARBOURSIDE must certainly increase in value very considerably.

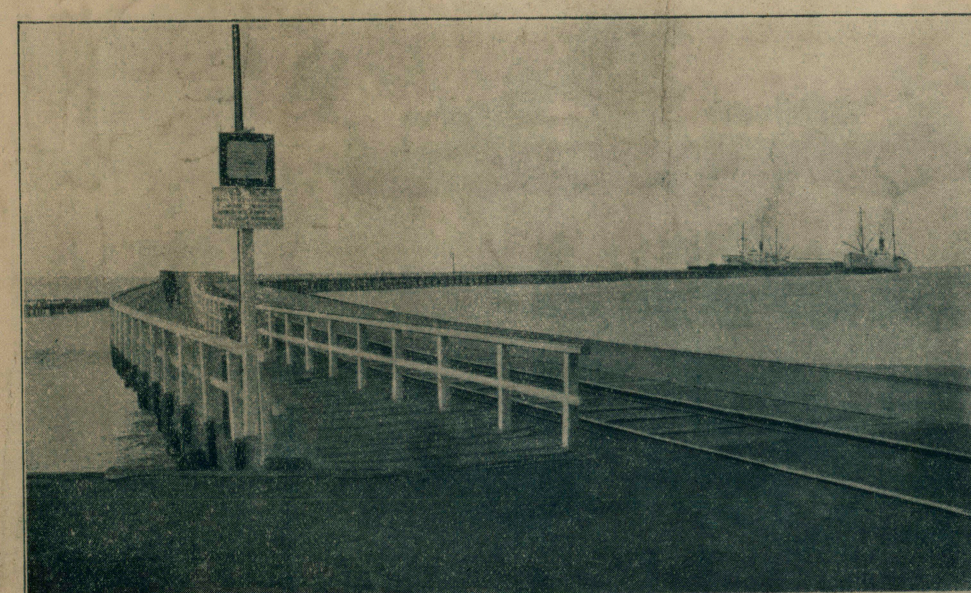
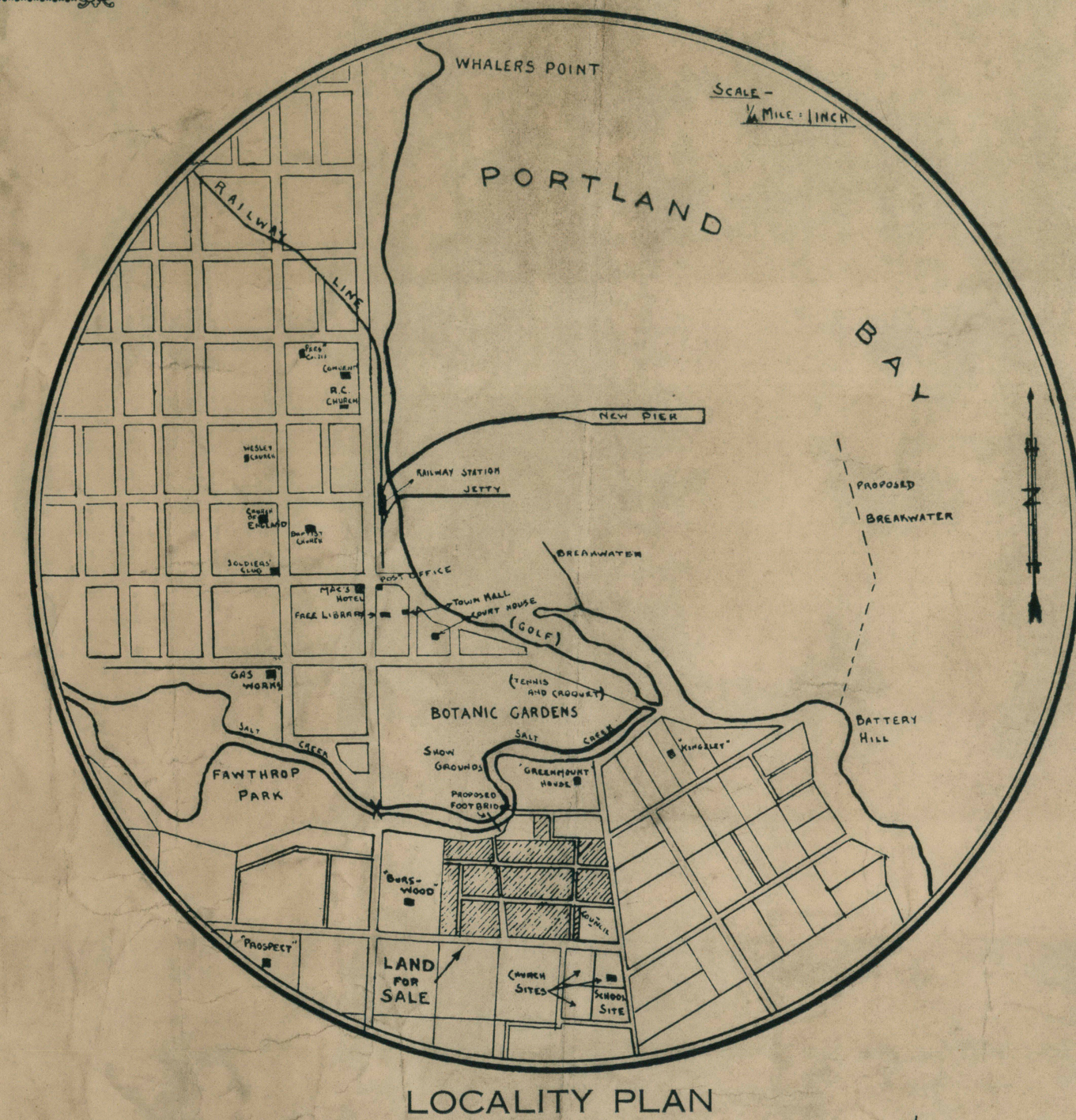
Harbour Schemes

Directly such announcement is officially made property in good positions like HARBOURSIDE ESTATE will be unobtainable.

Whichever Harbour Scheme is decided upon, either the Breakwater Scheme or the Dock Scheme, HARBOURSIDE ESTATE must benefit, being exactly midway between the two sites and a few minutes walk from either and right in the township of Portland.

Water Supply

PORTLAND'S Town Water Supply may now be considered an accomplished fact and is to be put in hand almost immediately.



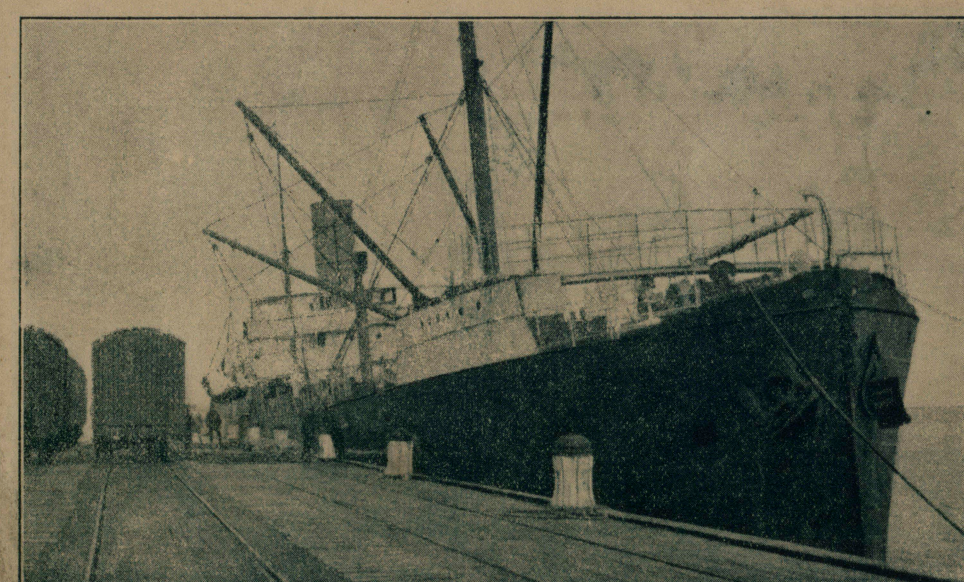
New Pier, Portland.

Price List

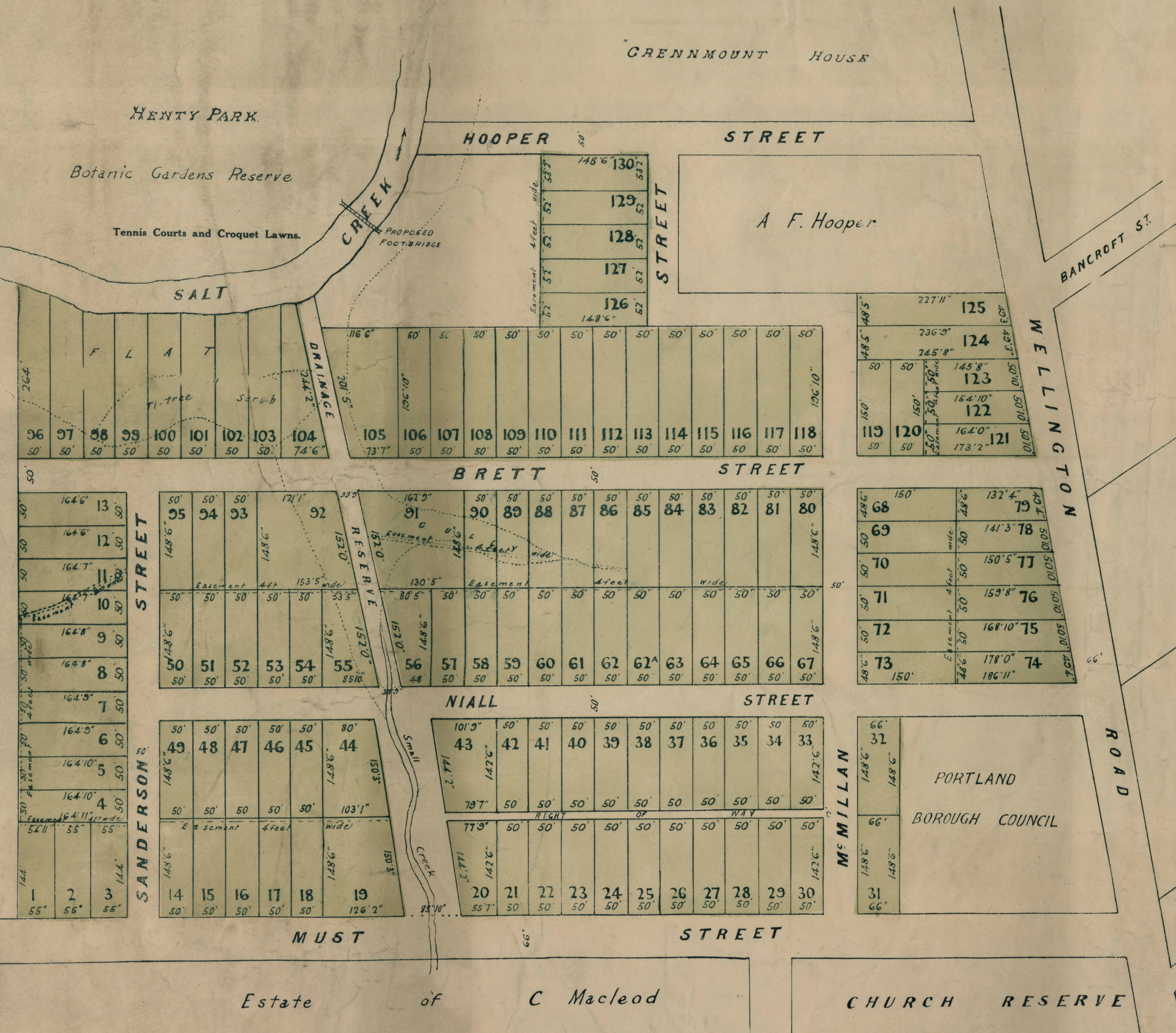
Lot No.	Price.	Lot No.	Price.	Lot No.	Price.
1 and 2	120	32	135	79	155
3	130	33	125	80	140
4 to 12	100	34 to 42	125	81 to 88	125
13	110	43 to 44	150	89 to 92	Read.
14	130	45 to 48	100	93	100
15 to 18	120	49 and 50	110	96 to 105	Read
19	200	51 to 54	100	106 to 117	120
20	125	55	135	118	150
21 to 29	120	56	135	119	140
30	135	57 to 66	125	120	120
31	150	67 and 68	140	121	160
		69 to 72	135	122 and 123	155
		73	140	124	170
		74	155	126 to 129	125
		75 to 78	140	130	145

For Particulars of TITLE application may be made to—

W. J. WILLIAMSON, LL.B.,
Solicitor and Notary Public,
PORTLAND.



S.S. "Whakatane" loading frozen meat at Portland.
H. E. Pett & Co., 19-21 Bourke St., Melbourne.



Portland's Progress

(Extract from "The Age," 11/3/24.)
"Perhaps it is somewhat trite to call Portland the 'Cinderella of Australia,' but it is none the less true. It was the first settlement in Victoria, it possesses a magnificent harbour, it is centrally situated at what should be the gateway of the western half of Victoria, and it is backed by land of amazing productivity. Yet through political influence it has remained a neglected township, living on dreams of what might have been.

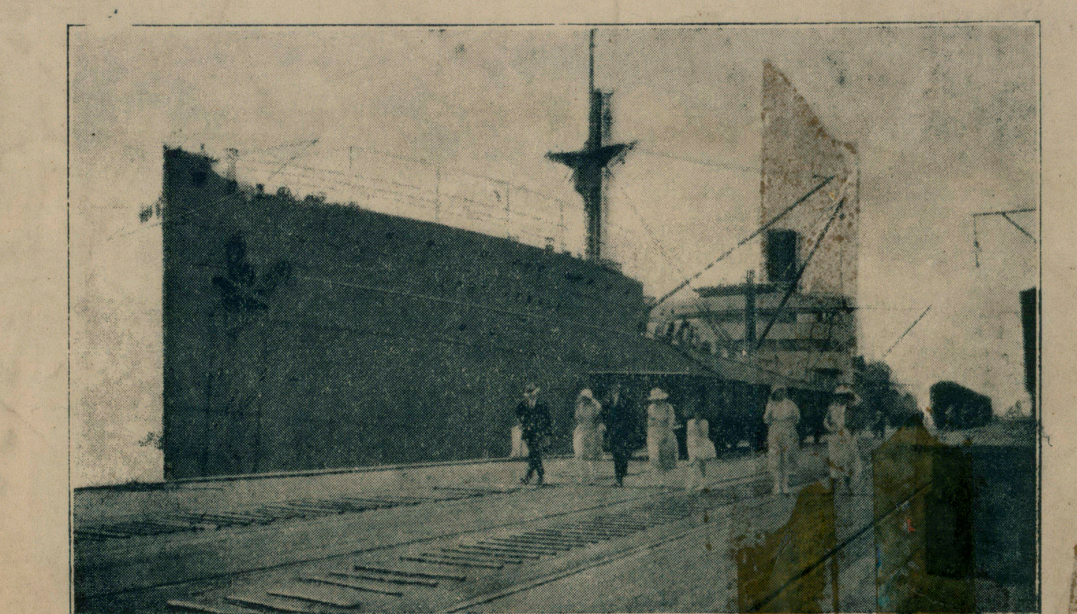
In the circumstances it is astonishing that Portland should have continued to exist, but it has done so, and it has at least illustrated the possibilities presented for development. The neighbouring districts produce apples and pears, vegetables, onions and potatoes and grain and hay crops. Samples of these are to be seen in the window of C. Werner and Co. in Collins Street. But it is not as a centre of primary production that Portland should have attained eminence. It should be a great port, handling a large proportion of Victoria's export and import trade; and it should also be a fine industrial city with great mills, factories and workshops. At present the secondary industries are confined to freezing works a few miles out of town, glass works, knitting mills for the manufacture of underwear, and a mill for the treatment of wattle bark.

Portland will come into its own. The magnificent harbour backed by the rising cliffs and the glorious white beaches will be crowded with great liners from all parts of the world, while the town itself, grown to be an influential city, will be a busy hive of industry, which will demand, and not beg for, recognition.

BUY NOW!

TERMS-

ONE-FOURTH CASH
and the Remainder in Four
Equal Payments
at 6, 12, 18, and 24 months
With 6 per cent. Interest



Loading Wheat at Portland.

HARBOURSIDE Estate is Delightfully Situated on a gradual Slope having a Full View of the Waterfront and with Perfect Natural Drainage

AGENTS FOR VENDOR J. G. STEWART & CO., Gray St., HAMILTON