

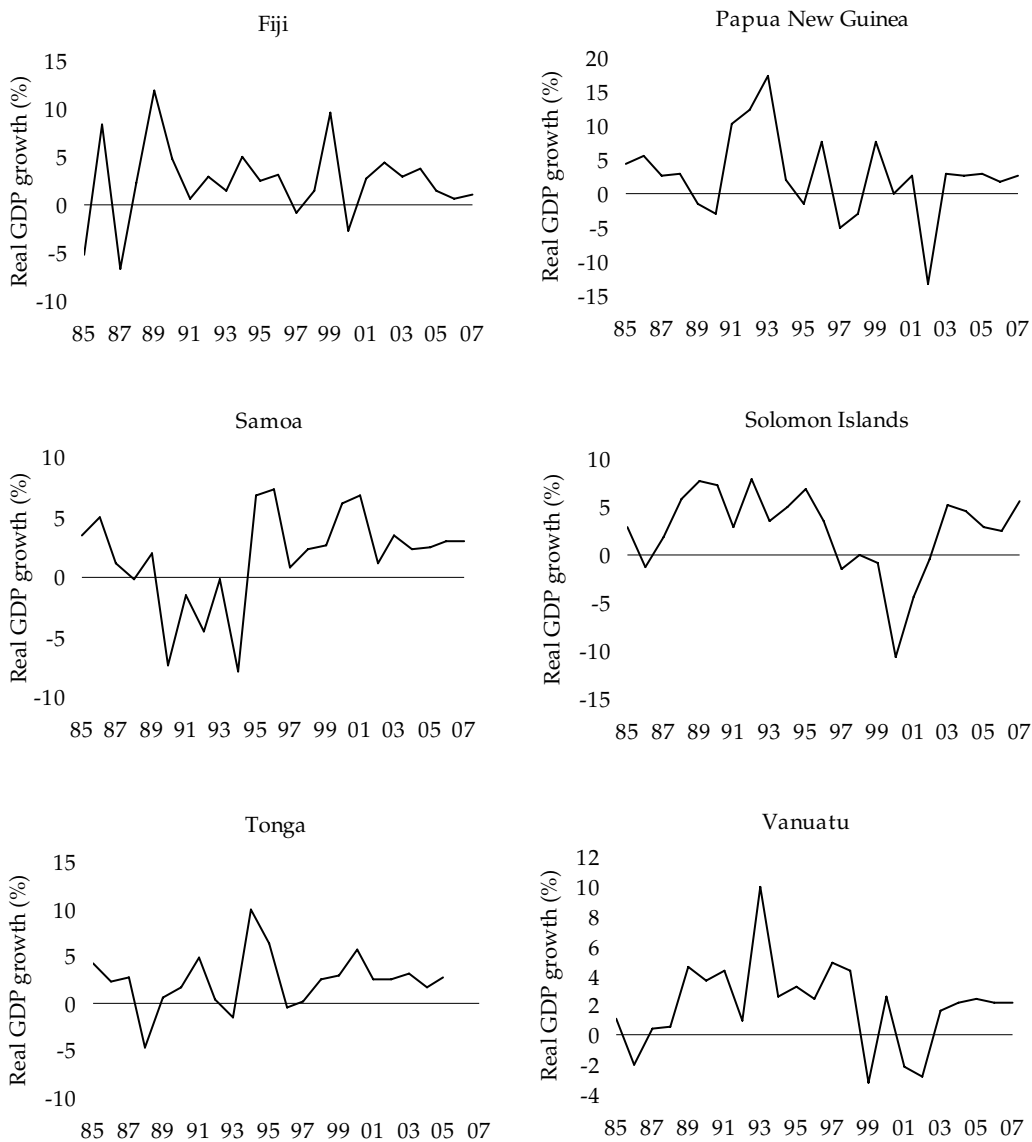
South Pacific statistics at a glance

Figure

1	Real GDP growth rates, 1985–2007	254
2	Consumer price quarterly indexes, 1993–2005	255
3	Growth in merchandise trade, 1994–2007	256
4	Current account balance, 1994–2007	257
5	Real GDP growth per capita, 1994–2007	258
6	Quarterly interest rates, 1993–2005	259
7	Exchange rates, 1986–2004	260



Figure 1 Real GDP growth rates, 1985–2007^E

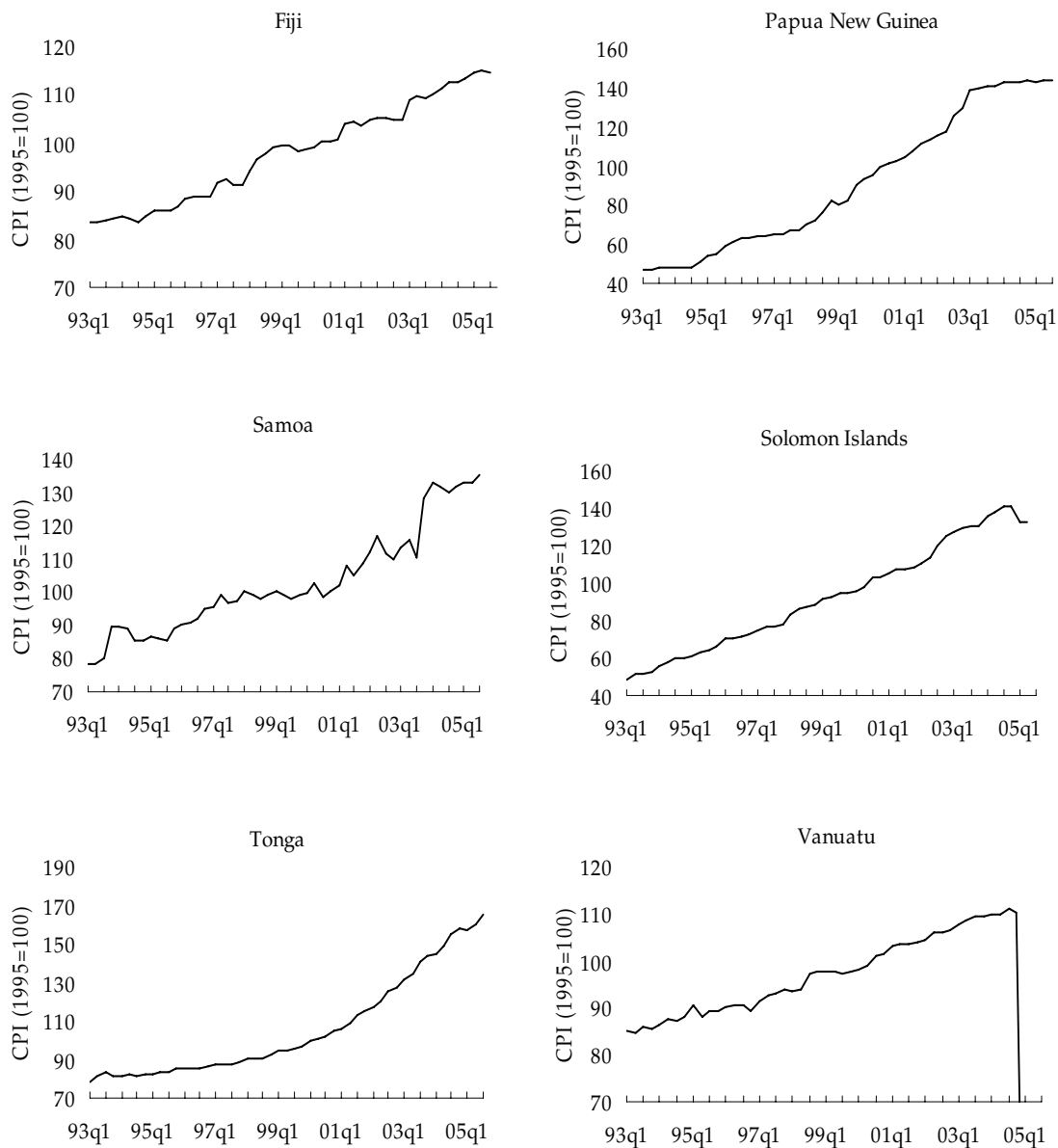


Notes: Data for 2006 and 2007 are forecasted. Fiji and Solomon Islands data calculated at constant factor cost, PNG, Tonga, Vanuatu and Samoa at constant market prices.

Source: Data prior to 1994 from the South Pacific Economic and Social Database, The Australian National University, Canberra; data from 1994 from Asian Development Bank, *Asian Development Outlook*, Manila.



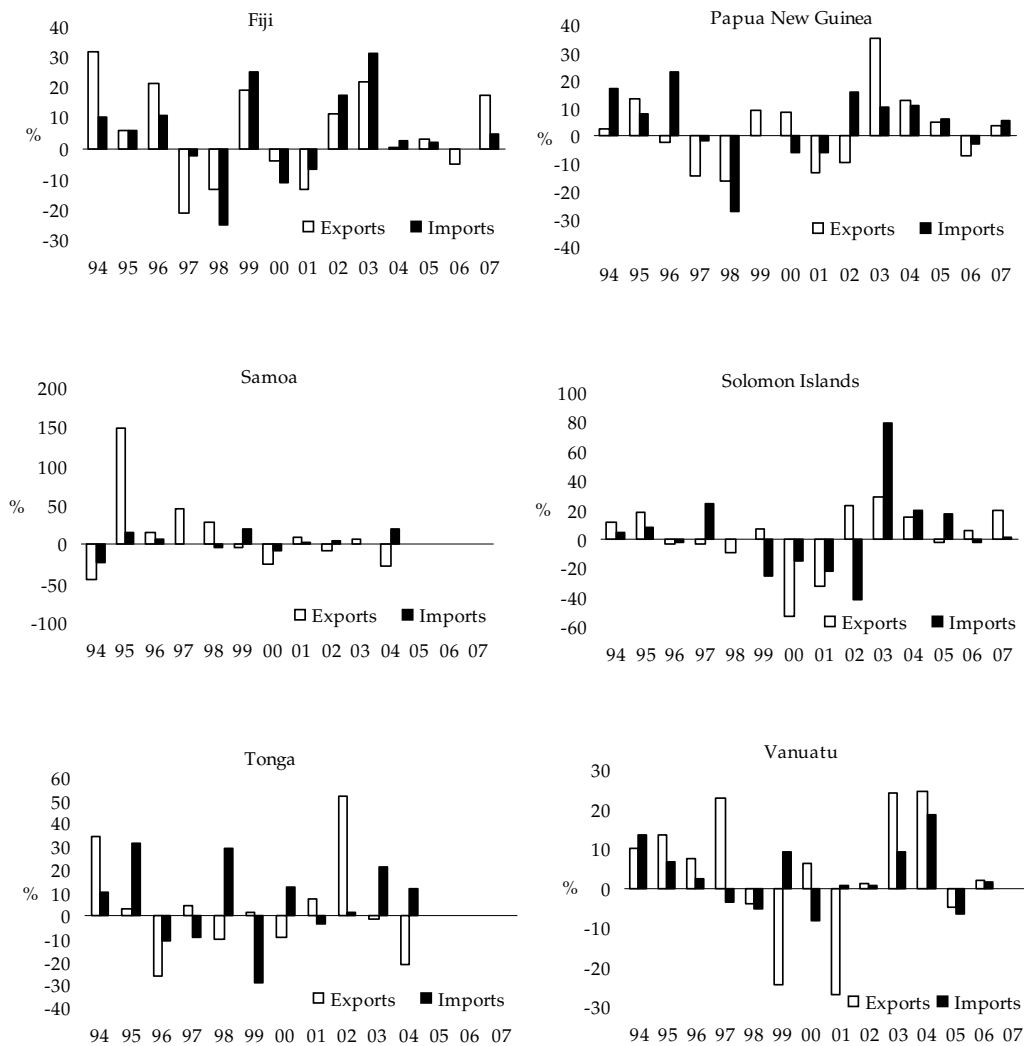
Figure 2 Consumer price quarterly indexes, 1993–2005 (CPI 1995 = 100)



Source: International Monetary Fund, *International Financial Statistics*, International Monetary Fund, Washington, DC.

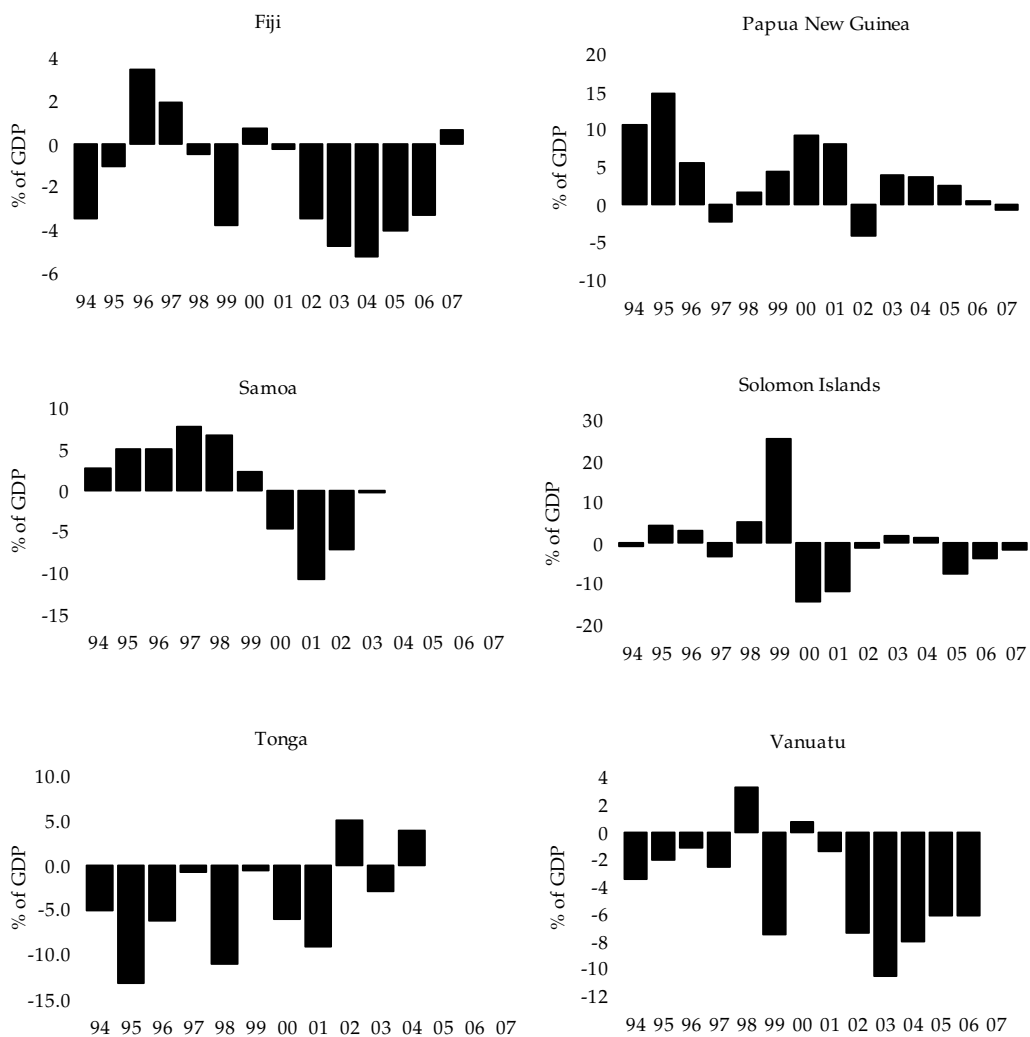


Figure 3 Growth in merchandise trade, 1994–2007^E



Note:^E Data for 2006 and 2007 are forecasted.

Source: Asian Development Bank, *Asian Development Outlook*, Asian Development Bank, Manila.

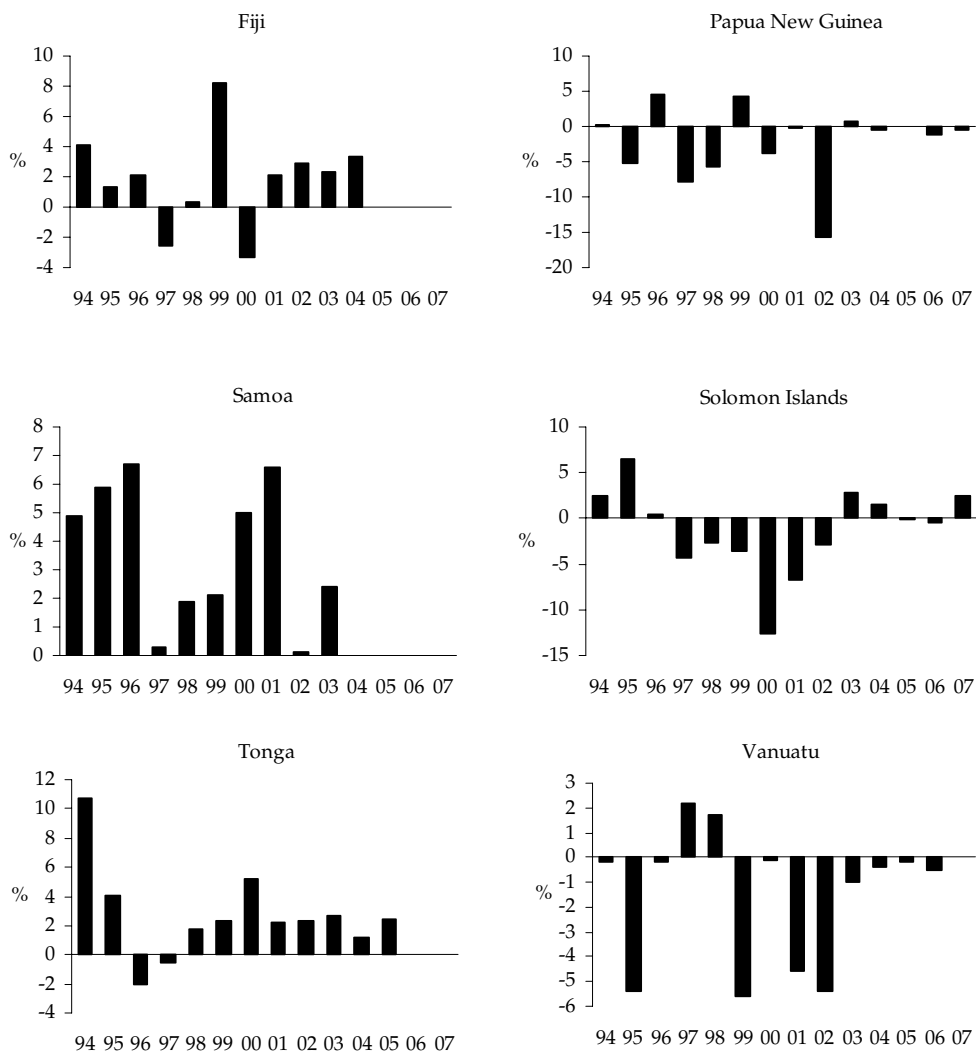
Figure 4 Current account balance, 1994–2007^E

Note: ^E Data for 2006 and 2007 are forecasted.

Source: Asian Development Bank, *Asian Development Outlook*, Asian Development Bank, Manila.



Figure 5 Real GDP growth per capita, 1994–2007^E

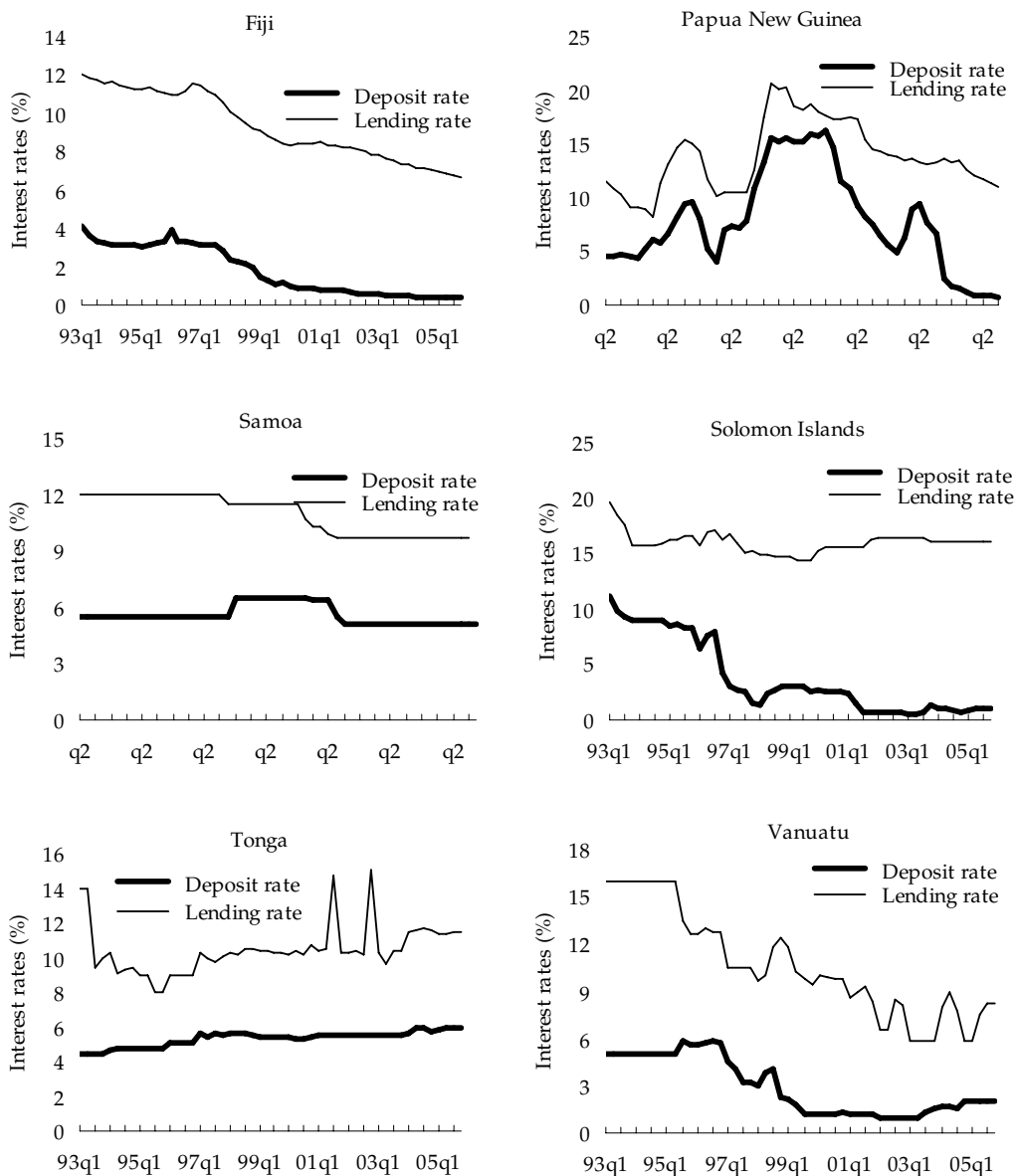


^E Data for 2006 and 2007 are forecasted.

Source: Asian Development Bank, *Asian Development Outlook*, Asian Development Bank, Manila.



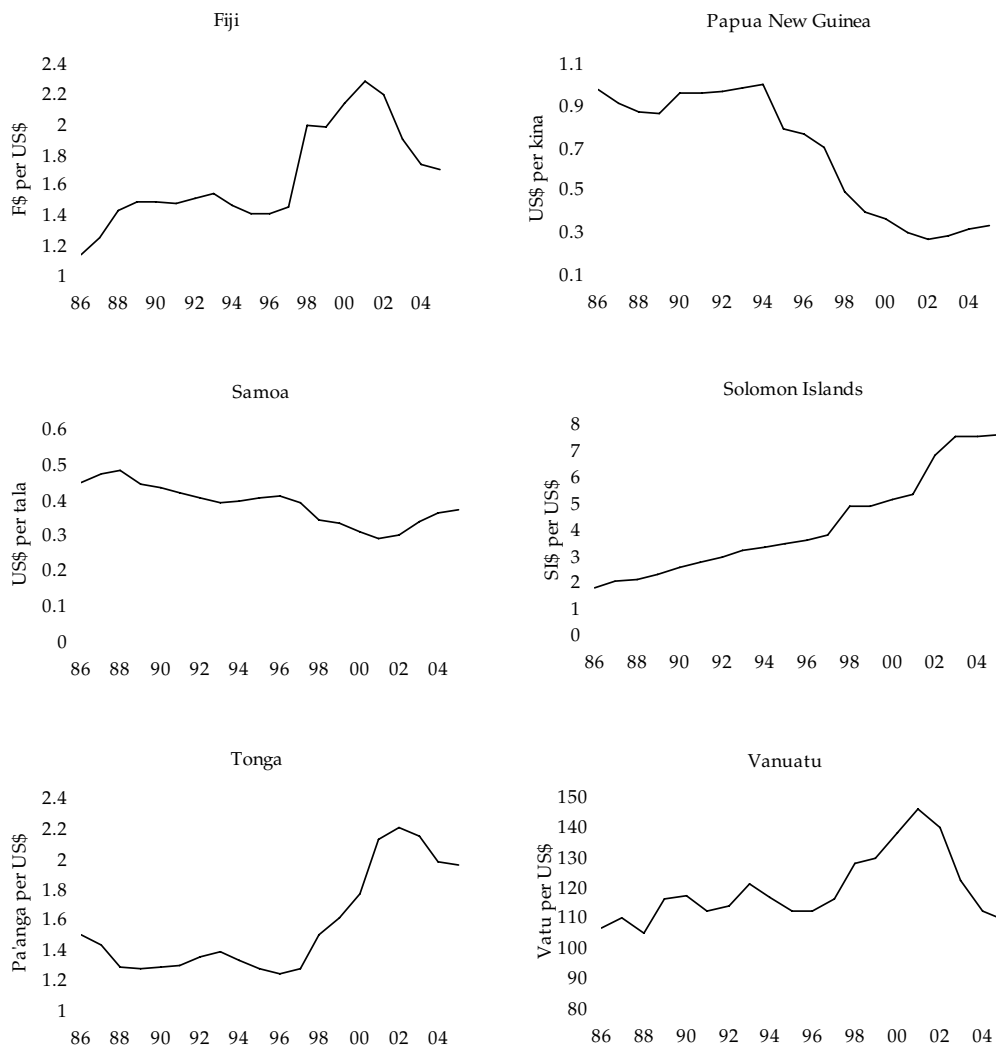
Figure 6 Quarterly interest rates, 1993–2005



Source: International Monetary Fund, *International Financial Statistics*, International Monetary Fund, Washington, DC.



Figure 7 Exchange rates, 1986–2004



Source: International Monetary Fund, *International Financial Statistics*, International Monetary Fund, Washington, DC.