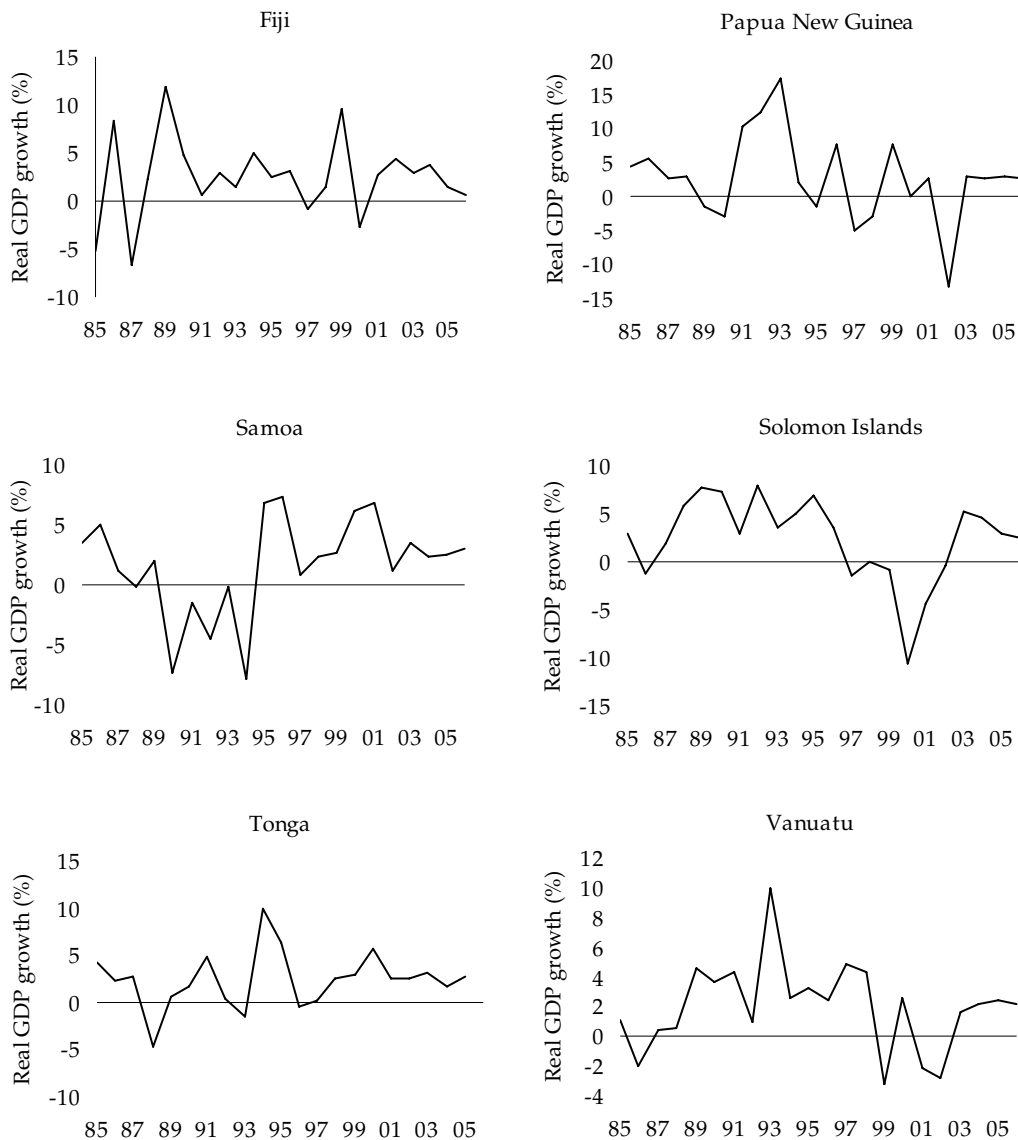


South Pacific statistics at a glance

Figure

1	Real GDP growth rates, 1985–2005	220
2	Consumer price quarterly indexes, 1993–2005	221
3	Growth in merchandise trade, 1994–2006 ^E	222
4	Current account balance, 1994–2006 ^E	223
5	Real GDP growth per capita, 1994–2006 ^E	224
6	Quarterly interest rates, 1993–2005	225
7	Exchange rates, 1986–2004	226

Figure 1 Real GDP growth rates, 1985–2005^E

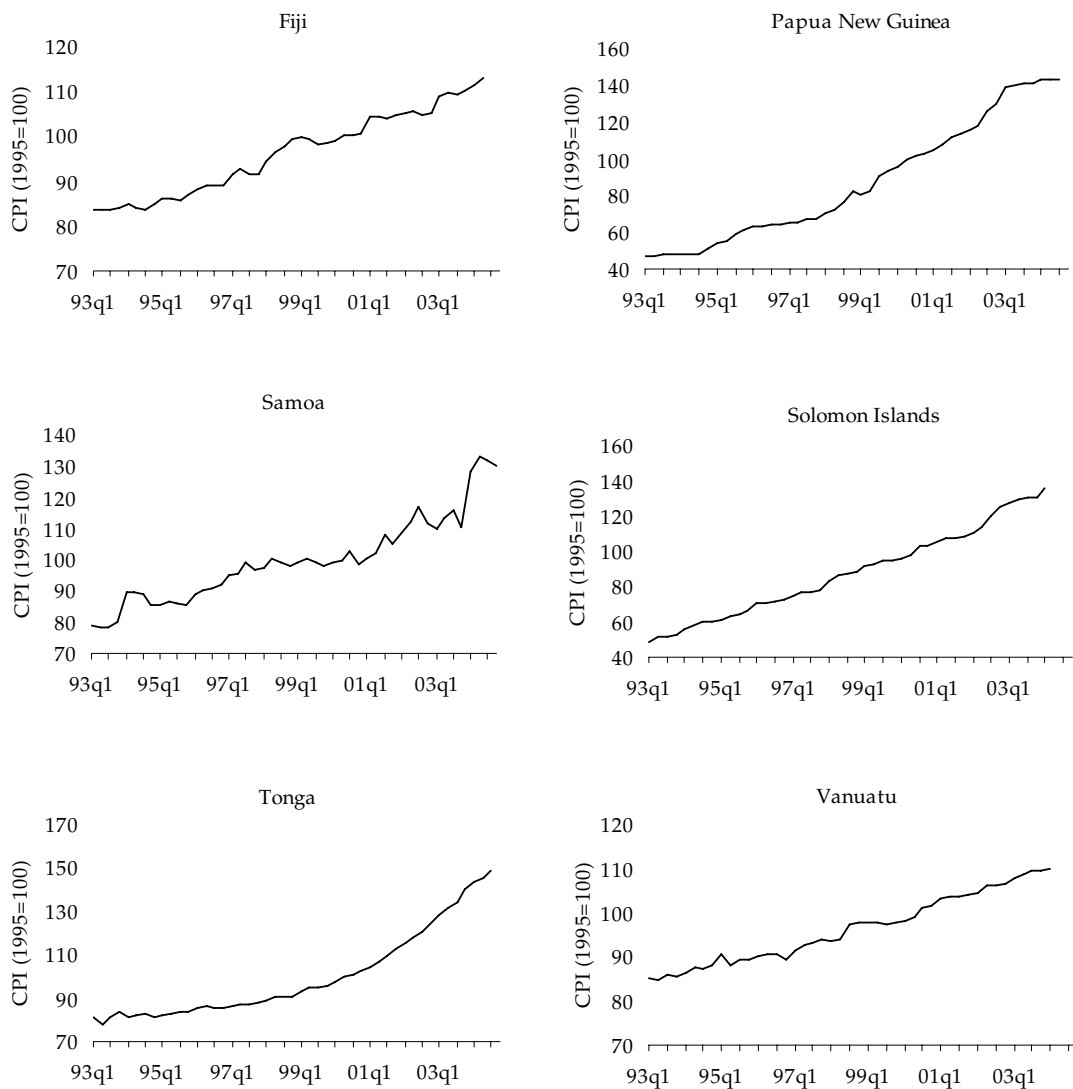
Notes: ^E Data for 2005 and 2006 are forecasted.

Fiji and Solomon Islands data calculated at constant factor cost, Papua New Guinea, Tonga, Vanuatu and Samoa at constant market prices.

Source: Data prior to 1994 from the South Pacific Economic and Social Database, The Australian National University, Canberra; data from 1994 from Asian Development Bank, Asian Development Outlook, Manila.



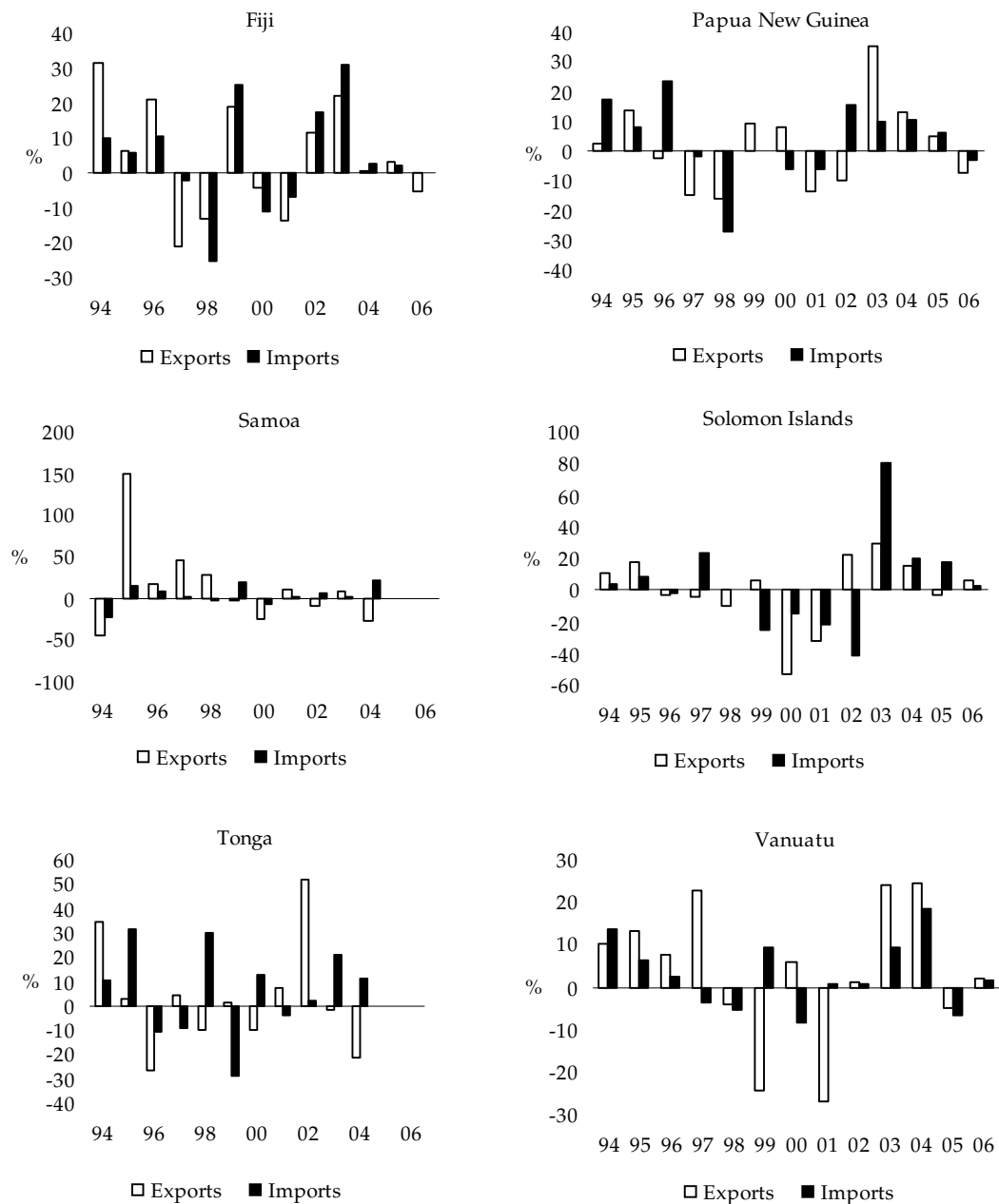
Figure 2 Consumer price quarterly indexes, 1993–2005



Source: International Monetary Fund, *International Financial Statistics*, International Monetary Fund, Washington, DC.



Figure 3 Growth in merchandise trade, 1994–2006^E

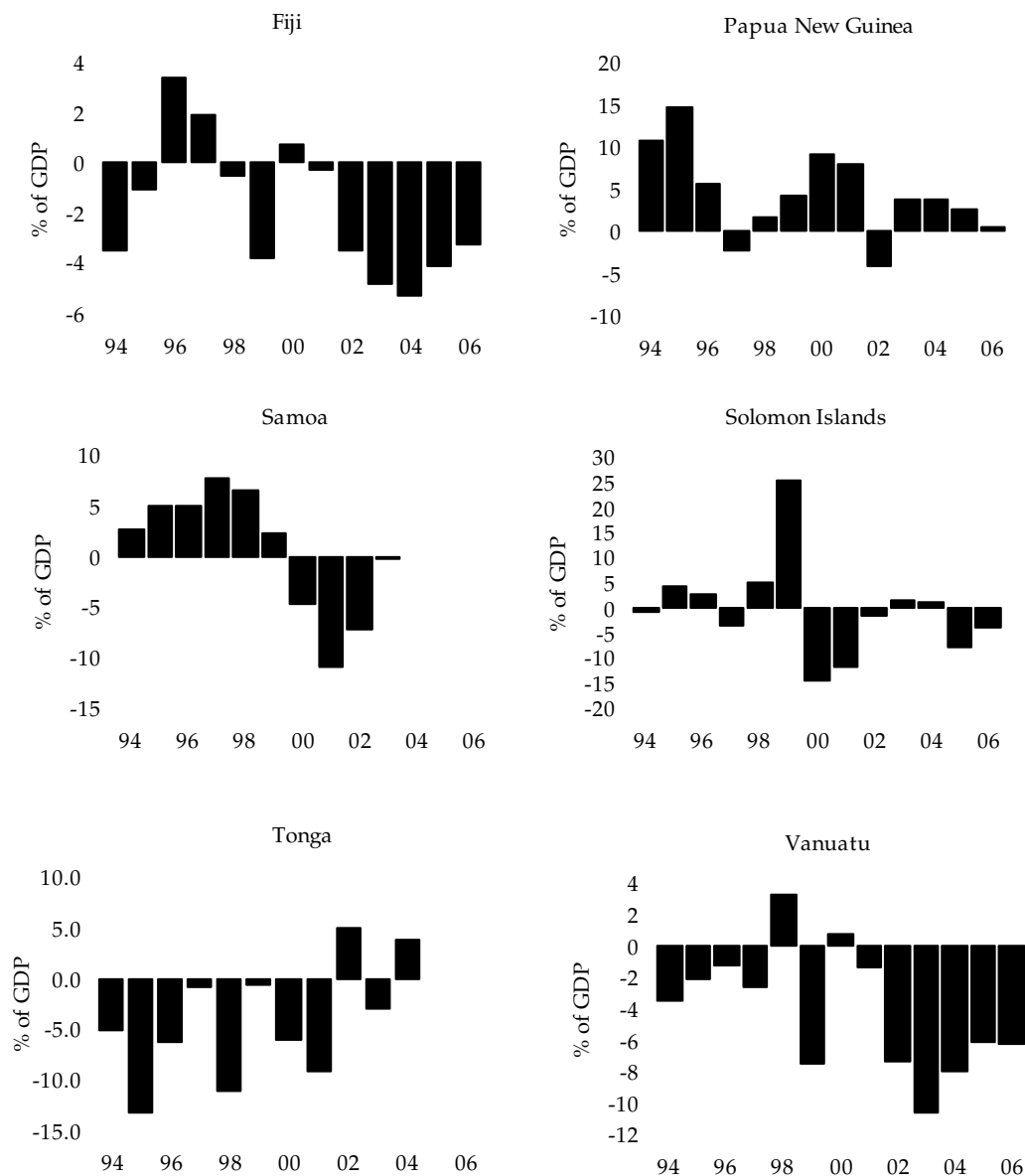


^E Data for 2005 and 2006 are forecasted.

Source: Asian Development Bank, *Asian Development Outlook*, Asian Development Bank, Manila.



Figure 4 Current account balance, 1994–2006^E

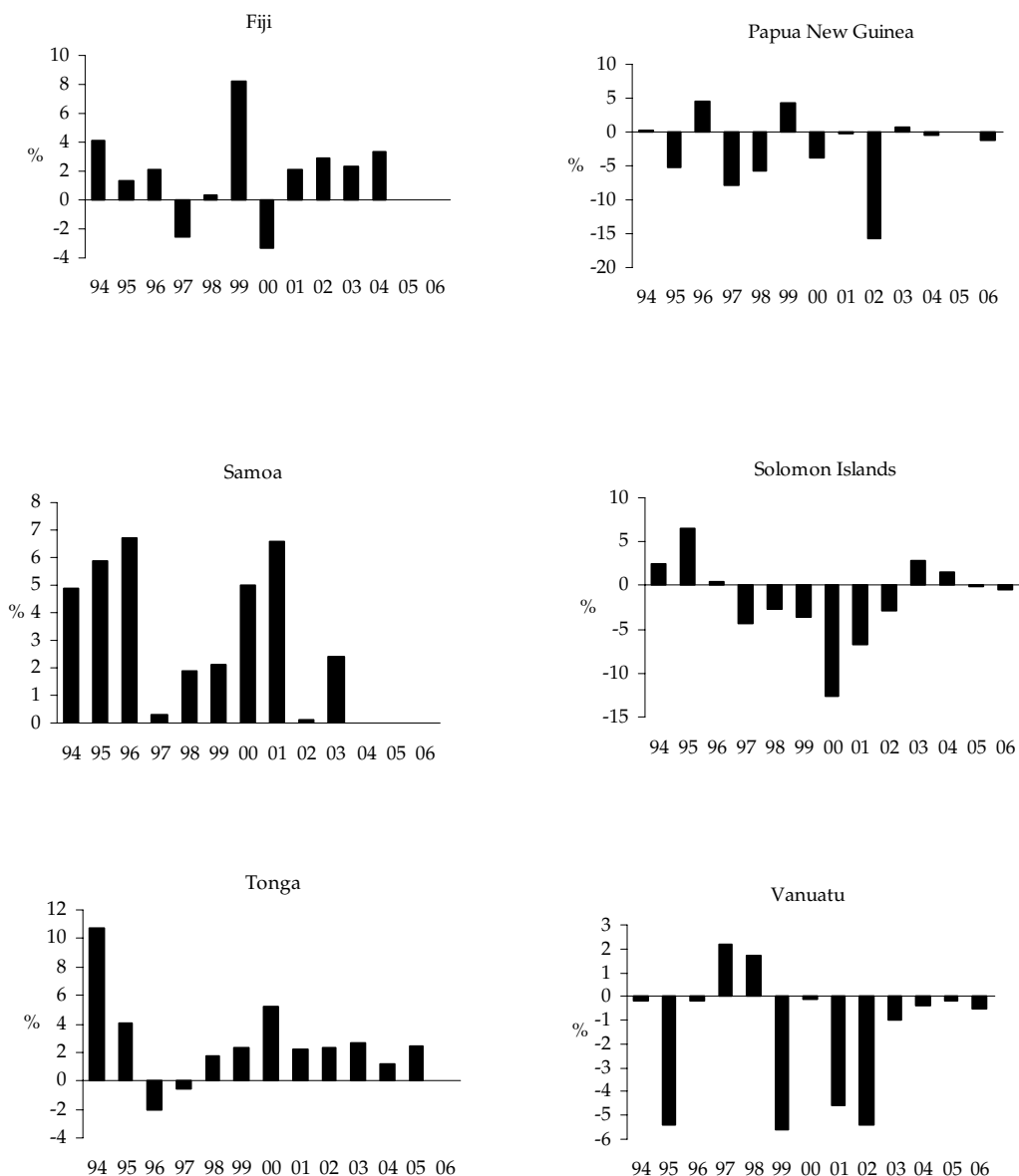


^E Data for 2005 and 2006 are forecasted.

Source: Asian Development Bank, *Asian Development Outlook*, Asian Development Bank, Manila.



Figure 5 Real GDP growth per capita, 1994–2006^E

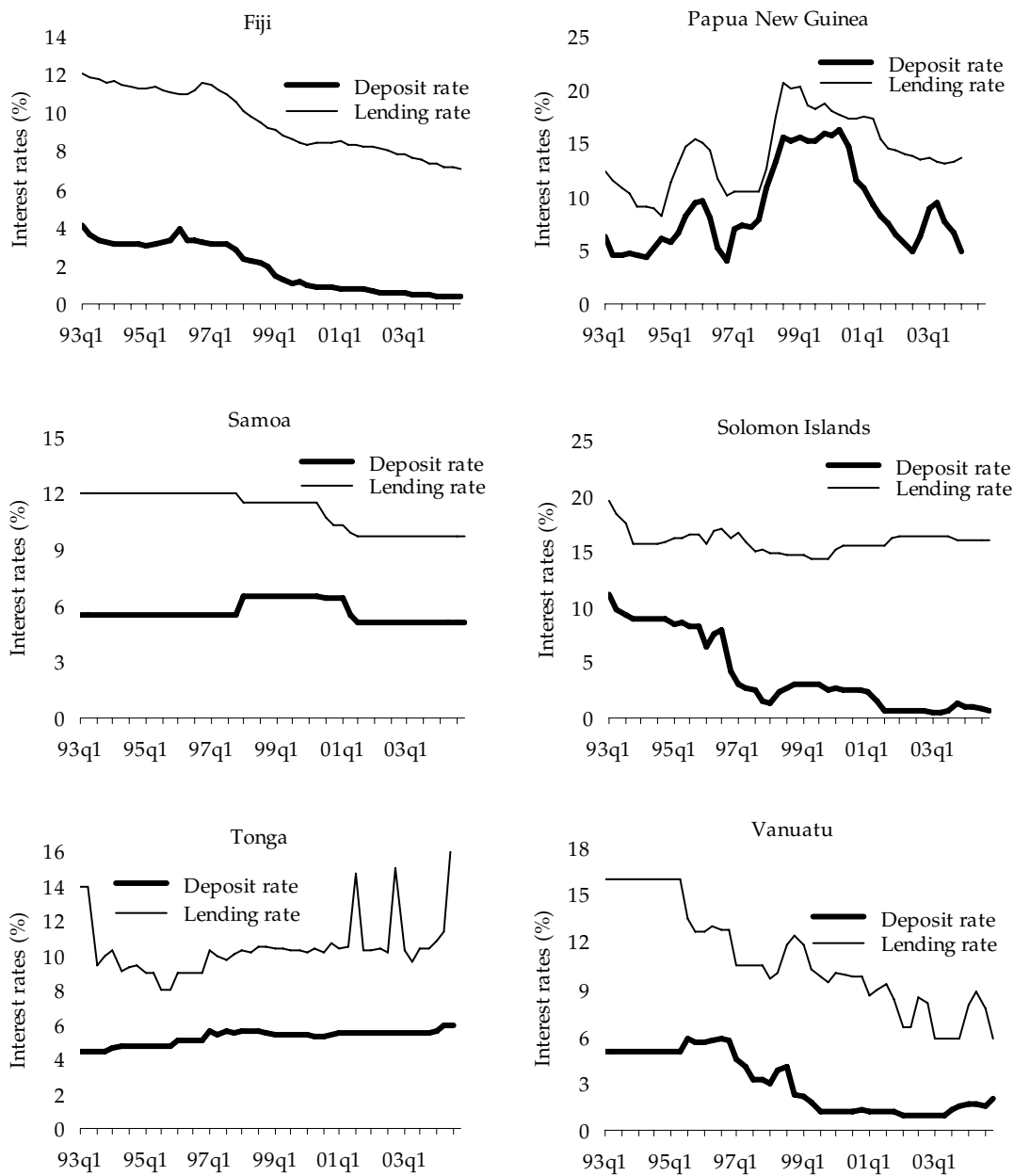


^E Data for 2005 and 2006 are forecasted.

Source: Asian Development Bank, *Asian Development Outlook*, Asian Development Bank, Manila.



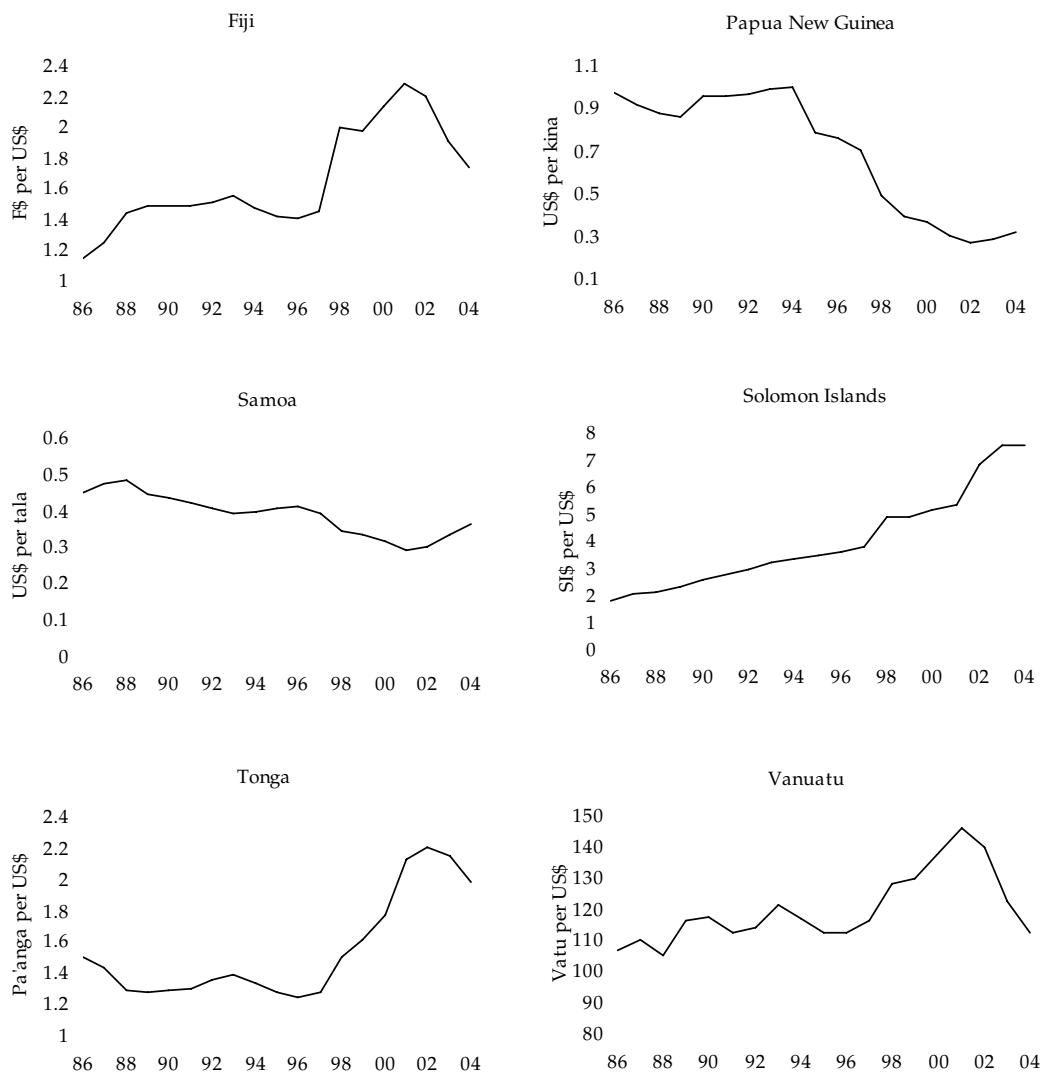
Figure 6 Quarterly interest rates, 1993–2005



Source: International Monetary Fund, *International Financial Statistics*, International Monetary Fund, Washington, DC.



Figure 7 Exchange rates, 1986–2004



Source: International Monetary Fund, *International Financial Statistics*, International Monetary Fund, Washington, DC.